

# ROCK TALK



White Mountain Gem & Mineral Club  
P.O. Box 3504  
Show Low, Arizona 85902  
[www.whitemountain-azrockclub.org](http://www.whitemountain-azrockclub.org)  
[whitemtngmc@gmail.com](mailto:whitemtngmc@gmail.com)

Vol. 28, Issue 12  
December 2024

## PRESIDENT'S LETTER

**A** good time was had by all! There were lots of smiles, laughter, and "mm-mm" sounds going around. It was apparent everyone was having a good time. As I have said before, we have some really super cooks in our club (and some very creative shoppers). What always wows me is how much we enjoy and appreciate one another.

It's been a year of new members, new roles, and some losses. Mary Johnson lost her daughter on Saturday. Please send her loving thoughts. [www.owenslivingstonmortuary.com/obituaries/elizabeth-hartzell](http://www.owenslivingstonmortuary.com/obituaries/elizabeth-hartzell)

We all have fond and fun memories of club members who have left the club for whatever reason. So, a major goal this coming year is to expand our membership to include younger and much younger members. We have lots of room for new friends!

Trivia: Sometimes referred to as a Christmas rock because of bright green, red and white minerals. Eclogite is a very beautiful rock. Green is pyroxene omphacite, red is garnet, white is quartz. It is a metamorphic rock, a rare but geologically significant rock type. It is common in the upper mantle, especially in regions occupied by subducted oceanic plates.

Thank you all for a very successful year for our club. I am sure next year will be even better.

Merry Christmas, Happy Chanukah, Happy Holidays!

Sandra

## TREASURER'S REPORT

### November Expense

Club Promotion Items  
Property Taxes  
Members' Badges

### Upcoming Expense

Newsletter printing & postage  
RMFMS Dues  
Insurance

### Income This Month

Memberships  
Donations

# BULLETIN BOARD

## Happy December Birthday

To:

Michael Adams    Maria Sierra  
Lois Atkin        David Sorrels  
Joan Devito       Roland Webster  
Dustin Hults      Loren Wright  
Mikki Kas  
Patricia Parks  
Donna Pollard



"Let's Do Lunch" Bunch  
will not be doing lunch  
this month. They will  
catch up next year!

*Merry Christmas, ya' all!*

## IN THIS ISSUE

ITEM	PAGE
President's Letter/ Treasurer's Report	1
Notes of Interest/ Important Reminders	2
Club Information	3
Minutes of December Meeting	4
Rockhounding at St. Johns	5
Rock of the Month—Fluorescents	6
Building a Love for Geology/ Board Meeting Minutes	7
Club Schedule for 2025	8
Membership Application for 2025	9
<b>ADDITIONAL PAGES</b>	
Around and About at the Meeting	10

## MINI GEM, MINERAL & FOSSIL SHOW

**Save the Date:**

**Saturday March 29  
10:00AM -- 3:00PM**

**WHERE:**

**Mellon Center  
Concho, AZ**

**Free Admission**

**Games, Learning Activities, Prizes, Raffles**

**Rock Specimens, Jewelry, etc. For Sale**

**KIDS OF ALL AGES WELCOME!**



Presented by the White Mountain  
Gem & Mineral Club  
Non-Profit 501(c)3 #31450

**Members with last names  
A—N will supply the  
Potluck table at our  
January meeting.**

## Rock Talk Newsletter

Our newsletter is published monthly by the White Mountain Gem & Mineral Club, Inc. Any information or comments members wish to include in the monthly newsletter must be given to the editor at the general membership meeting or call the editor no later than Tuesday following the meeting.

## Membership Dues

Membership dues are \$20 for a single membership and \$25 for a couple/family. (\$5 less if you receive newsletter by email.) Dues are paid in January each year along with a completed application form. Memberships initiated in November or later in a given year are also good for the following year.

## Meetings

We meet the first Sunday of the month (unless it falls on a holiday) at the VFW Post 9907, 381 North Central Avenue in Show Low. Turn north off the Deuce of Clubs at Burger King. Social half hour at 1:00 PM, meeting starts at 1:30 PM.

## ELECTED OFFICERS

Office	Name	Phone	E-Mail
PRESIDENT	Sandra Angelo	(928)537-3726	sandra_angelo@hotmail.com
VICE PRESIDENT	Debbie Christmas	(602)475-4714	Deb_xmas@yahoo.com
2ND VICE PRESIDENT	Carol Glick	(928)228-6202	malcarglick@yahoo.com
SECRETARY	Shelly Applegate	(928)245-4300	shellylynn@gmail.com
TREASURER	Kim Whitley	(928)853-4455	kimwhitley@gmail.com
EDITOR	B.G. Hogarth	(928)532-3043 Cell-(775)397-2312	hogarths@citlink.net
FIELD TRIPS	Dick Turpin	(480)240-0995	
	Rick Palmer	(928)333-5019	palmer57@frontiernet.net

## Members at Large

Dick Turpin	(480)240-0995
Terry Pollard	(480)431-0686
Ursula Wilson	(928)532-5703

## Volunteer Positions

Webmaster/Coalition Chair	Aimee Webster	(602)503-8417	afwebster61@gmail.com
Show Chairman	Cathy Cargile	(714)348-9162	skyranch5734@yahoo.com
Assistant Show Chairman	Ursula Wilson	(928)532-5703	
Sunshine	Donna Pollard	480-600-2714	tdpollard@msn.com
Education, Schools	Open		
Greeter/Door Prizes/Raffle	Thelma Gray/Diane Moten		
Auctioneer	Donna and Terry Pollard		
Highway Cleanup	Brookie/ Larry Embry	(928)537-0760	
Bonus Prizes	Sandra Angelo	(928)537-3726	
Historian	Donna Pollard	(480)600-2714	tdpollard@msn.com
Librarian	Rick Palmer	(928)333-5019	palmer57@frontiernet.net
Meeting Room Setup/cleanup	Shelly Applegate	(928)245-4300	shellylynn@gmail.com

## Chamber of Commerce Liaisons

Show Low: B.G. Hogarth

Snowflake/Taylor: Open

Springerville/Eager: Rick Palmer

Heber/Overgaard: Aimee Webster



# WHITE MOUNTAIN GEM & MINERAL CLUB

## MEETING MINUTES DECEMBER 8, 2024

**T**he meeting did not follow our usual format since the main purpose of the meeting was a holiday celebration. At about 1:00 PM everyone helped themselves to the buffet. Thirty-four members joined the celebration. The meeting officially did not start until almost 2:00 PM.

The Pledge of Allegiance was the first order of business. Then members and guests were welcomed. Wendi Knowles, BG's daughter, was a guest and it also happened to be her birthday. Garrett was also celebrating his twelfth birthday. So the next order of business was to sing Happy Birthday to them. Minutes were approved and the treasurer's report was presented.

The Board met November 16 to establish the 2025 budget. The calendar of events was also determined. Goals for the year were identified. Remember to renew your membership.

Beginning in January there will be a new format for the meetings. It will be shorter with most, with the business part scheduled for the end rather than the beginning of the meeting.

The program will be scheduled for the first half. Our hope is to make the meetings more kid friendly so more families will consider attending. We will still have Show and Tell, door prizes, 50/50 raffle, and silent auction.

The January field trip will be to the Gila County Gem and Mineral show on January 11 . Meet at the Show Low Chamber at 9:00 AM.

Save the Date! We will have a mini-rock show at Mellon Center in Concho on March 29.

Show Chair Cathy Cargile gave a show report- 38 tables have been reserved by 12 vendors. We will have a contract for Elks Lodge in January. Vendor agreements will happen then.

From there we moved on to the White Elephant Gift Exchange. Lots of laughter and people trying to hide their gifts so as not to have to exchange them.

End of year prizes were awarded. Whenever a member does something above and beyond coming to a meeting, an entry into the drawing is given. The more activity, the more entries are given. Those who worked all four days of the show had a lot of tickets. As each winner was drawn, Sandra gave a brief report about some of their contributions.

The meeting concluded just prior to 4:00 PM.

Merry Christmas and Happy Holidays to all!

Next meeting is January 6.

Respectfully submitted

Shelly Applegate, Secretary

# ROCKHOUNDING AT ST. JOHNS

## (OR: "WHY ARE YOU PICNICKING AT THE DUMP?")

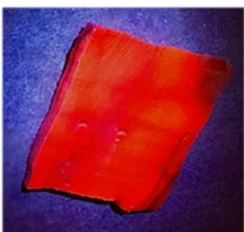
By  
Dick  
Turpin

The morning of November 21 started out cold, near freezing in fact. However, the forecast promised a rapid improvement to the fifties by our meeting time of 9:00 AM. The energetic group of rockhounds managed to get on the road by 9:15 minus our leader, Sandra, who was suffering from a bad cold. She welcomed the opportunity to opt out and climb back in bed. We all wished her a quick recovery.

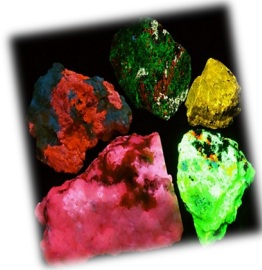
Once in St. Johns, we added a few additional members at the Ace Hardware including Terry and Donna, who led the way to the landfill road just a couple miles out of town. After weighing in on the landfill scale, apparently to prevent anyone from collecting too many rocks, we parked next to the club collecting plot. Donna gathered the group and explained where we could hunt and what areas and other collectors to avoid.

The group then scattered widely over the permitted area and the loud thuds of rocks hitting Home Depot buckets echoed across the rolling hills. Over the next three hours a wide variety of rocks and minerals were found including colorful jasper cobbles, fossil vertebrae, and satin spar plates. During the lunch hour the group made their way back to the vehicles and enjoyed a cold drink and a variety of sandwiches and treats. The landfill visitors provided the entertainment as they zoomed pass us at speeds approaching 60 mph. Most never slowed, but a few courteous ones slowed down a bit or veered to the left. We were sure they were thinking "What kind of crazy people come out to the dump road for a Saturday picnic?" A couple stopped to ask what we were doing. When we told them we are rockhounds, they nodded and said "Oh, that explains a lot."

During the break Donna did her best to educate the members about the dinosaur fossils that she found. She also corrected a misidentification of the satin spar as selenite. She pointed out the collected material is harder than a finger nail which means it isn't selenite with a Moh's hardness of 2. Further research after the field trip by a certain field trip leader uncovered the fact that two different minerals are identified as satin spar. One is selenite (calcium sulfate) the other is calcite (calcium carbonate). The later has a hardness of 3 which is harder than a fingernail. When a few of the specimens were treated with acid they fizzed violently. Also, under long wave UV light they fluoresce in a strong red color (see photo). The evidence is clear that the satin spar is the calcite variety. That reinforced a couple points about our field trips (1) they are not only about gathering tons of rocks, but they also provide an opportunity to learn about minerals and earth science, and (2) one is never too old or knowledgeable to learn something new about rocks.

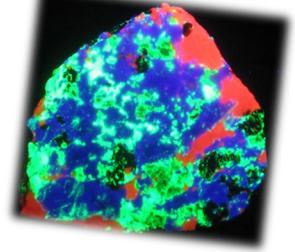


Satin Spar - Calcite var. under UV light



# ROCK OF THE MONTH

## FLUORESCENTS



**T**he glowing of minerals is known as "fluorescence," and with the rich ore bodies in Franklin and Ogdensburg, New Jersey, the area is known as the fluorescent mineral capital of the world. The Franklin and Sterling Hill ore bodies are the source of at least 350 mineral species. At present, over 80 fluorescent mineral species are known in the area.

Willemite and calcite are the most common fluorescent minerals in the ore bodies and are known as "Christmas Ore" when they occur together in the same mineral specimen.

What causes the fluorescence? Fluorescence usually occurs when specific impurities known as "activators" are present within the mineral. These "activators" are typically cations (positively charged particles; ions) of metals such as tungsten, molybdenum, lead, boron titanium, manganese, uranium, and chromium. Rare earth elements such europium, terbium, dysprosium, and yttrium are also known to contribute to fluorescence. Crystal structure defects or organic impurities can also cause fluorescence.

Calcite ( $\text{CaCO}_3$ ) and willemite ( $\text{Zn}_2\text{SiO}_4$ ) are examples of minerals in a pure state that do not fluoresce, but add some divalent manganese ( $\text{Mn}^{2+}$ ) and fluoresce red and green respectively.

Minerals are used in many ways to celebrate Christmas; in decorations, in creating "mineral" Christmas trees, and in the discovery of new minerals

Other interesting ways in which minerals are connected with the holiday season:

**Christmas Ore:** The beautiful combination of willemite and calcite (see above), when manganese is an impurity in the ore body.

**Silica Sand:** This mineral (quartz) is used to make glass baubles for Christmas trees, giving them their vibrant colors.

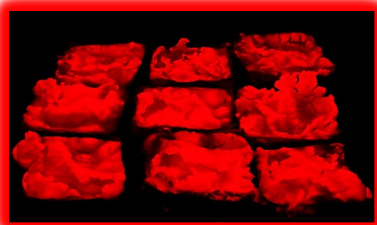
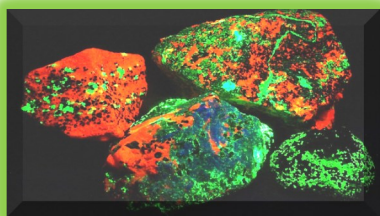
**Christmas Mine, Arizona:** This mine, now closed down, is in Gila County and where the minerals apachite, junitoite, and ruizite were first discovered. The mine was staked on Christmas Day, 1902, which is how the mine got its name. (*Editor: My husband once worked at this mine!*)

**Feldspar, silica, clay, nepheline syenite, trona, and tungsten** are used in the manufacture of Christmas tree lights.

**Borate, iron, copper, and lead** are used in the manufacture of Christmas tree ornaments.

**Chalcopyrite** is a copper-rich metal that can form a Christmas tree-like structure.

**Polished gem stones** are used in the Christmas Advent Calendar, an educational activity that includes a stone for each day leading up to Christmas.





# BUILDING A LOVE FOR GEOLOGY

By Cathy Cargile, Show Chair



**T**he more we as club members get out and interact with the community the more we can help people of all ages learn to appreciate rocks, gems, minerals fossils and our amazing planet!

The Mellon Center in Concho is thrilled that we will put on a "mini" gem show for the children and adults in the Concho area. The plan is to have about eight tables which they provide, each with an educational activity or display for visitors to enjoy plus items for sale by our club members. Jewelry, tumbled rocks, slabs, specimens, and crystals are great examples of things you may have and wish to sell. It would be perfect if each table had two club members interacting with the public. One table may have our spinning wheel game, another may wish to show rocks that could be

found in the Concho area, another could feature fossils, another may wish to display and sell fluorescents, etc. etc. We already have someone who will set up rock painting! Your ideas are welcomed and encouraged. If you are fresh out of ideas let me know as I am willing to help create educational activities that I have seen and "borrowed" from other clubs. The "Save the Date" flyer was handed out at the Concho School Bazaar on Saturday December 7 and "Save the Date" flyers are now at the Mellon Center. More details about the "mini" show are in this newsletter on the "Save the Date" piece. Our "mini" show will be an opportunity to invite new club members and to promote our July Show! Let's make 2025 a year to remember!

## BOARD MEETING MINUTES

By Sandra Angelo

Board members met to discuss 2025. First order of business was to establish a calendar of events for the year. This is published on Page 8. The calendar follows a similar format each year with a few variations. For example, the first 2025 field trip will be January 11 so we can attend the Gila County Gem and Mineral Show. We have added a mini rock and mineral show at the Mellon Center in Concho on March 29. Our show is scheduled for July 17 through 20.

The budget was reviewed, and adjustments were made including putting back funds eliminated during our austere years. Please contact Kim to review a copy if you wish.

The roles of first and second vice president were discussed. With Carol unable to fulfill her role as first vice president, we needed a creative solution. Debbie was elected as second vice president. Rather than task her with a dual role, Mike Soboleske will join her as co-vice president, allowing both of them to bring their expertise to the position.

Goals identified for 2025 included:

- A shorter more kid-friendly meeting
- Increase active membership
- Greater outreach/advertising
- Update by-laws

Thanks to everyone who participated in this very productive planning meeting.

# WHITE MOUNTAIN GEM & MINERAL CLUB CALENDAR OF EVENTS 2025

**TIPS FOR FIELD TRIPS WANTED!**  
**PLEASE LET US KNOW OF ANY PLACES THAT**  
**WOULD BE GREAT FOR OUR OUTINGS.**

<b>MONTH</b>	<b>MEETING DATE</b>	<b>FIELD TRIP DATE</b>	<b>ACTIVITIES</b>
<b>JANUARY</b>	<b>5</b>	<b>11</b>	Globe, Gila County Show
<b>FEBRUARY</b>	<b>2</b>	<b>22</b>	Bullion Center, Miami
<b>MARCH</b>	<b>2</b>	<b>22</b>	3/29—Mini Show, Concho
<b>APRIL</b>	<b>6</b>	<b>26</b>	4/06—Geologist Day
<b>MAY</b>	<b>4</b>	<b>24</b>	BLM 5/17—Highway Cleanup
<b>JUNE</b>	<b>1</b>	<b>21</b>	
<b>JULY</b>	<b>6</b>		7/11—DaVinci Day Medieval Mayhem
<b>ANNUAL SHOW: July 17—20 Show Low Elks Lodge</b>			
<b>August</b>	<b>3</b>	<b>23</b>	
<b>September</b>	<b>7</b>	<b>27</b>	9/16—Collect Rocks Day 9/20—Highway Cleanup
<b>October</b>	<b>5</b>	<b>25</b>	10/12—Harvest Fest
<b>November</b>	<b>2</b>	<b>22</b>	
<b>December</b>	<b>7</b>		Holiday Party





# MEMBERSHIP APPLICATION

PO BOX 3504  
SHOW LOW, AZ 85902

DATE: \_\_\_\_\_ NEW \_\_\_\_\_ RENEWAL \_\_\_\_\_

Printed Name(s): \_\_\_\_\_

Phone(s): \_\_\_\_\_ Brass Name Badges (\$5 each) \_\_\_\_\_

Mailing Address: \_\_\_\_\_ City: \_\_\_\_\_ Zip: \_\_\_\_\_

E-mail Address(s): \_\_\_\_\_

Type of Membership: Single (\$20) \_\_\_\_\_ Couple/Family (\$25) \_\_\_\_\_

*(\$5 deduction if getting newsletter by E-mail)*

Please send club newsletter by: E-mail \_\_\_\_\_ US Mail \_\_\_\_\_

May we have birthdays? (Month Only) \_\_\_\_\_

List any junior members you would like to sponsor (No added fee):

1. \_\_\_\_\_ Age: \_\_\_\_\_ 2. \_\_\_\_\_ Age: \_\_\_\_\_

3. \_\_\_\_\_ Age: \_\_\_\_\_ 4. \_\_\_\_\_ Age: \_\_\_\_\_

Signatures: \_\_\_\_\_ Date: \_\_\_\_\_

Seasonal members, please list alternate address and months of residency:

Address: \_\_\_\_\_ City: \_\_\_\_\_ Zip: \_\_\_\_\_

Months: \_\_\_\_\_ Phone: \_\_\_\_\_

White Mountain  
Gem & Mineral Club  
PO Box 3504  
Show Low, AZ **85902**

