



*The Cottages*

*Newsletter*  
*Spring 2024*



Kiki Scovel

## President's Message

*The time for snowbirds to fly up north is fast approaching. We have enjoyed a particularly beautiful season this year, with plentiful rain and little humidity, just perfect for our flower gardens—I think I like El Niño.*

*For those who could not attend our annual meeting in February, please view the presentation that was emailed. At 27 years old Cottages is aging and more maintenance and attention is required to keep it beautiful. I recently met with a board member from another neighborhood in Pelican Landing who had been impressed with our landscape appearance and he wanted to know how to accomplish the same. This is a sincere compliment to all Cottagers and I wanted to pass it on because your individual efforts make our street look good!*

*I have been working with Bay Creek CDD to define the line for the landscape easements along Pelican Nest Drive where the even numbered homes are affected. I appreciated the CDD's cooperation in this matter. Using the legal Plat map easement designations the CDD placed stakes and also assigned a specific crew to do the trimming along Nest Drive going forward. The stakes are white PVC and must be left in place to guide the CDD trimming crews. As a reminder to all homeowners, the HOA sets the streetscape landscape plan and replaces plantings on the common areas, and homeowners replace plantings on their private property. The HOA provides the general landscape maintenance through the contract with Green Acres.*

*Wishing everyone a fun-filled and pleasant summer wherever you may be!*

*Kiki*

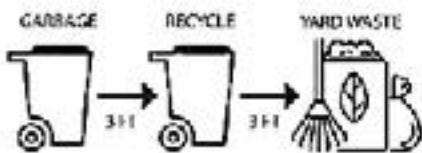
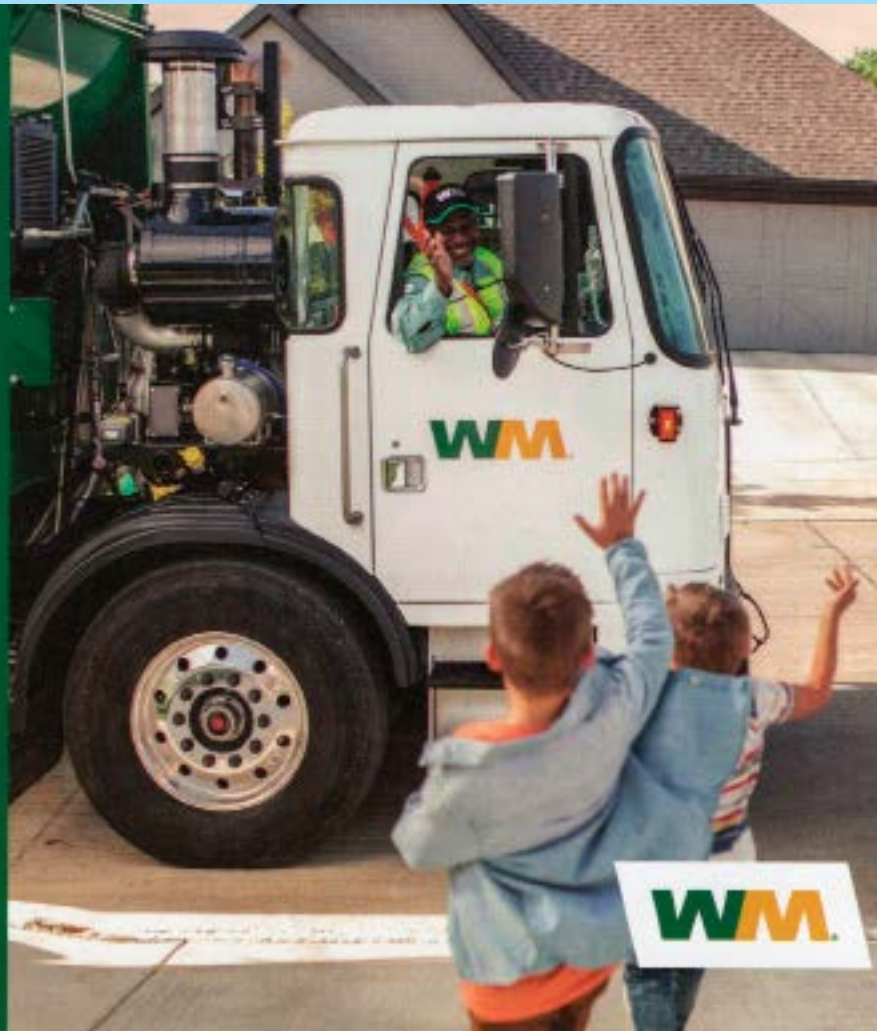
# Recycle & Garbage pickup days change Starts Tuesday April 30th

## Single Day Collection is Coming

Starting the week of April 29, your collection day for Garbage, Recycling and Yard Waste will be all on one day: **TUESDAY**.

WM is making this change to make your curbside collection services more efficient, keeping safety as a top priority.

See back side for more details.



• Please allow three feet between your Garbage containers, Recycling Cart, and Yard Waste.

- Yard Waste (grass clippings, leaves, pine needles) should be bagged or placed in a container.
- Containers must not exceed 50 pounds in weight.
- Tree branches must not exceed six feet in length, six inches in diameter or 50 pounds.



- Have your materials for collection at the curb the night before or no later than 6:30 a.m. on your collection day.

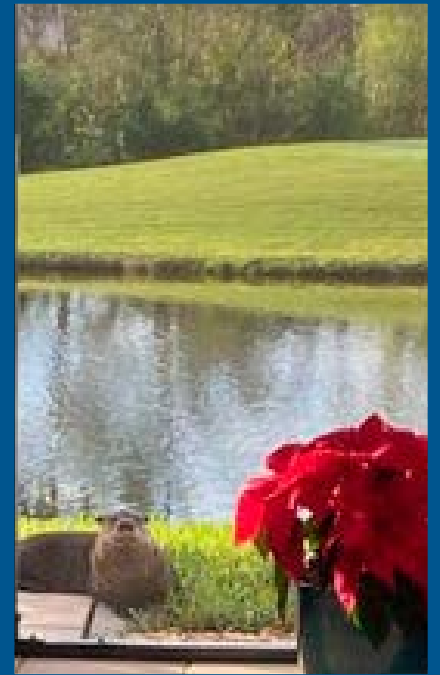
*For more  
information contact  
WM at:*

**(239) 334-1999**

## Around the Neighborhood

### Surprise visitor

Never expected to see this...a river otter in our side yard this morning! He came up to our lanai to check us out and then swam away in the lake. I assume there are a lot of fish for it to eat in there. **Kiki**



### New Pool & Lanai

Susan Theiss (Baldwin - 3683) sent this photo of a complete renovation of their pool and lanai floor.



# Around the Neighborhood

## *Eagle visits Cottages*

Kiki scovel captured an eagle perched in a pine tree along the Cottages lake. Hopefully he is scouting out a good location for a new nest.

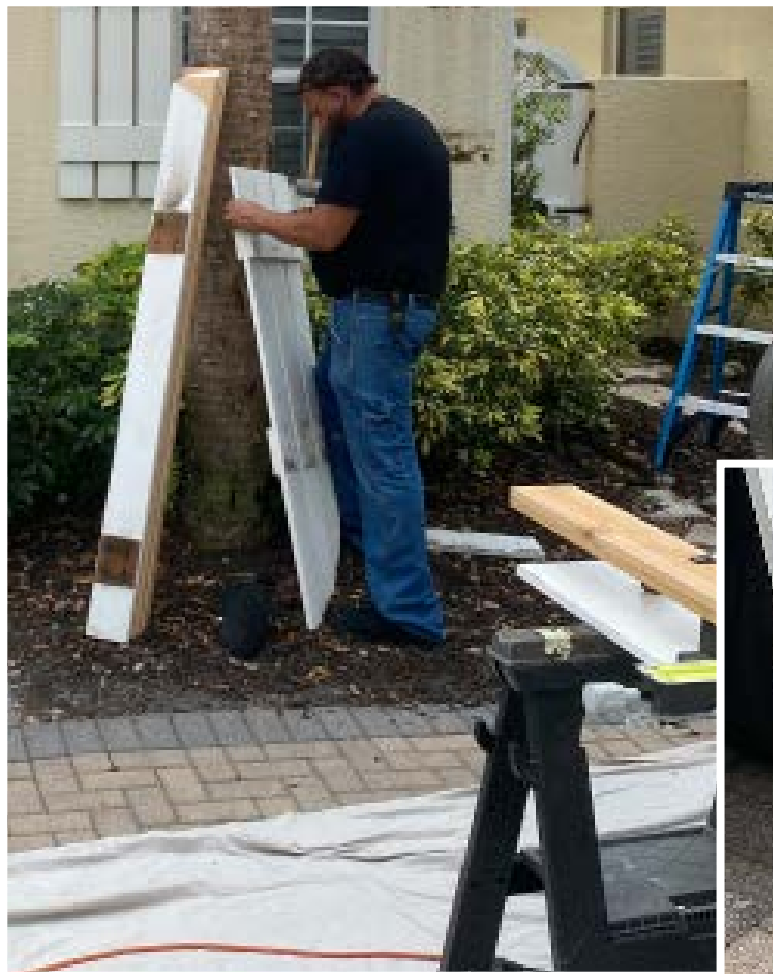


**Baby Gator suns on bank**

# Around the Neighborhood

## *New Shutters*

Tim Franson and daughter Rebecca at 3675 recently had new shutters installed on the front of their house. Mark Beatty, MR Properties, and his partner fabricated and installed the shutters. The old shutters were rotting.



## ***THE BRIDGE FUND - Pelican Landing's Local Charity***

***Did you know that there is an all-volunteer, 501(c)(3) charity located right here within Pelican Landing? It's The Bridge Fund. Since its founding in 2012, TBF has helped 1000's of individuals and families in the greater Bonita Springs/Estero and Lee Country area, approving over 3500 "awards" totaling over \$3,500,000. More than 98% of the support for TBF comes directly from residents of Pelican Landing. Dedicated to fulfilling its mission of "neighbors helping neighbors in need," The Bridge Fund provides financial support to our needy neighbors when they have nowhere else to turn. For many it is the last resort for assistance. Whether it's providing short term shelter for victims of abuse, beds for those sleeping on the floor, utility assistance for a single mom, students needing basic hygiene items or socks and coats in the winter, help to repair a disabled veteran's broken AC unit, lice treatment for school kids or transportation cards for medical visits, TBF is there when folks are desperate for help.***

***The Bridge Fund's unique structure of partnering collaboratively with over 20 local charities and 50 Lee County public schools enables TBF to identify and reach many folks in our community who are struggling to make ends meet. The partnership ensures a rapid response to the requests, providing folks with needed short term assistance, often within hours, and enabling TBF to operate very efficiently. Over 98% of donations go directly to those in need. The Bridge Fund is there when our neighbors are in need.***

***To learn more about your LOCAL charity, visit***

***The Bridge Fund web site at [www.thebridge-fund.org](http://www.thebridge-fund.org)***



***Bob Taylor, 3636 Olde Cottage Lane, is a founding member of The Bridge Fund Board of Directors. Bob recently gave an overview of the Bridge Fund at the Cottages annual meeting.***

# Cottages homes for sale

Sam  
&  
Gina Craft



3625 Olde Cottage Lane

Tom &  
Judy Maish



3629 Olde Cottage Lane

## **BUCKLE UP**

### **Active hurricane season predicted**

*Buckle up as it looks like it's going to be an extraordinarily active hurricane season in terms of both number of storms and also in the amount of potential impacts across the Caribbean and along the US Coastline (especially the Gulf Coast).*

*The Numbers:*

*25 Named Storms,*

*11 of those storms becoming Hurricanes*

*5 of those Hurricanes becoming Major Hurricanes (Category 3 or higher).*



# Cottages voting rep

Cal Scovel was The Cottages designated voting representee for Pelican Landing votes. To vote for the recent updated By-Laws PLCA documents Cal was required to report on votes from our 41 residents. Cottages has 41 votes. It requires 2/3 of the PLCA voting interests (2218 total votes) to pass. All votes were cast at the PLCA Annual Meeting by the designated neighborhood voting rep. The Cottages had participation of 83% — among the highest of any neighborhood. Cottages voters were in favor of the proposed bylaw changes. However the bylaws updates did not pass the 2/3 threshold needed in all of PLCA and Colony.



## **Pelican Landing vote does not pass**

*PL Board worked very hard  
on updating our very old bylaws*

*Our Cottages Ken Francese is on the Pelican Landing Board and gave many presentations explaining the need for documents update. Ken said that with the members who voted three of the proposals would have passed, one was right on the cusp with 66% in favor and two didn't achieve the 2/3 required. The membership would have ratified three proposals if the voting arrangement established by WCI was not in place.*



# Finances

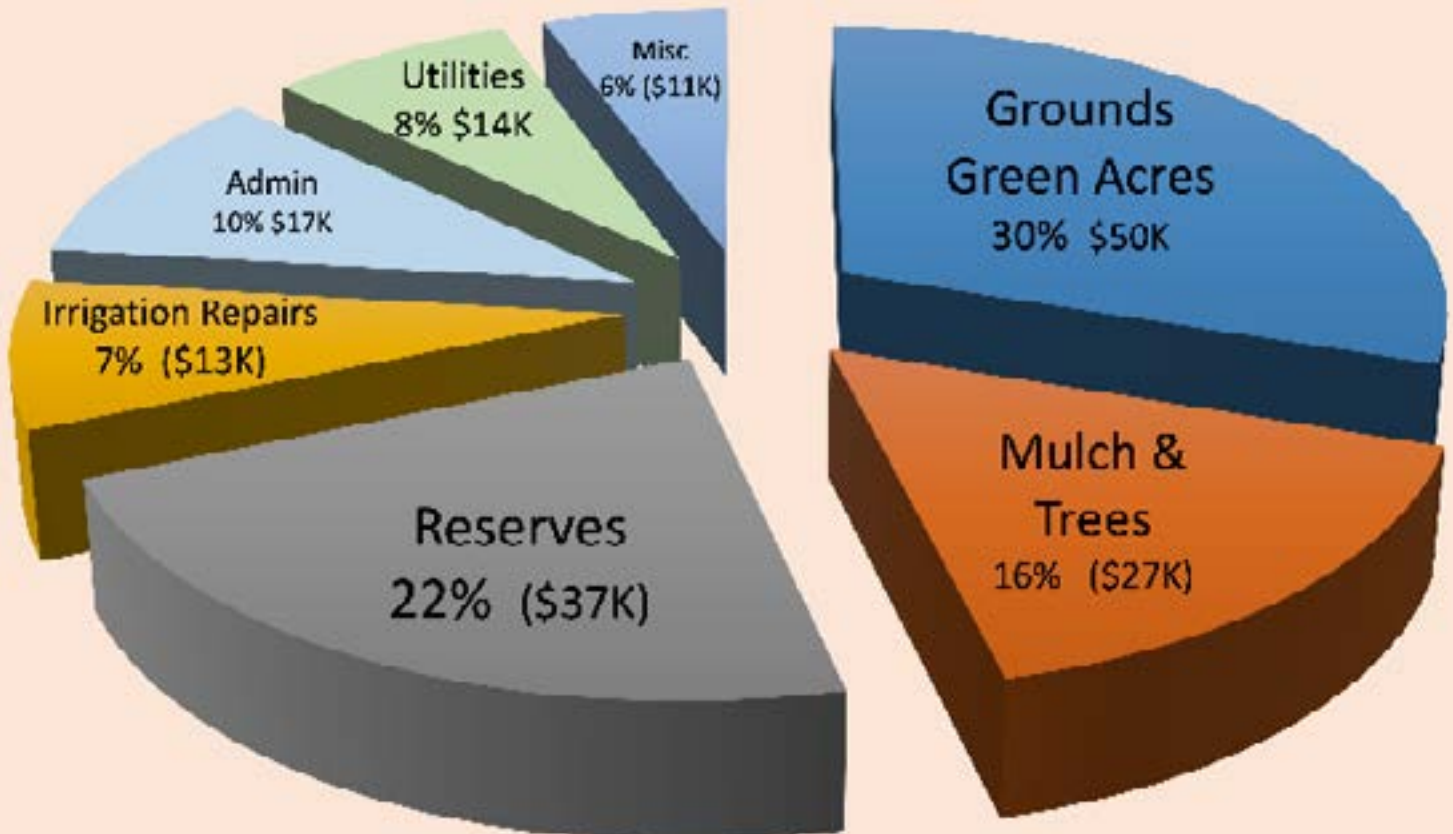


Paul Barnicke  
Treasurer

*Jan - Mar 2024*

*The Cottages is in good financial shape:  
\$58,000 Operating Account  
\$171,000 in Reserves*

2024 Budget \$167,000



# Maintenance News

## *New Bulletin Board*

*Kiki Scovel ordered and Paul Barnicke installed a new bulletin board at the Gazebo. Meeting notices will be posted in compliance with Florida law. The old box was rusted and difficult to open.*



# *PLCA Roadways*

**Walkers** must use sidewalks in the community where available. No walking on main feeder roads shall be permitted. In situations where it may be necessary to walk in the roadway, pedestrians must walk facing traffic.



**Runners** are encouraged to use sidewalks where available. Runners who run in the roads must do so facing traffic.



**Bicycles** must be ridden in the roadway in single file, going in the direction with traffic, and observing all regulatory signs (i.e. stop signs, yield, etc.). Bicycles must yield right-of-way to pedestrians and shall give audible signal before overtaking and passing such pedestrian. "PLCA encourages the use of bike helmets."

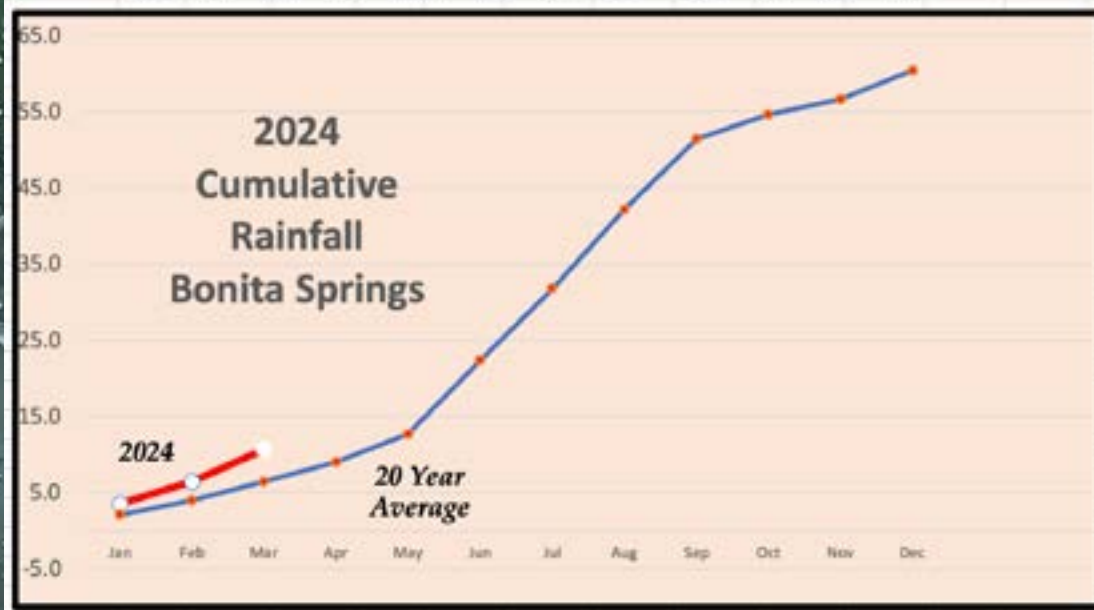
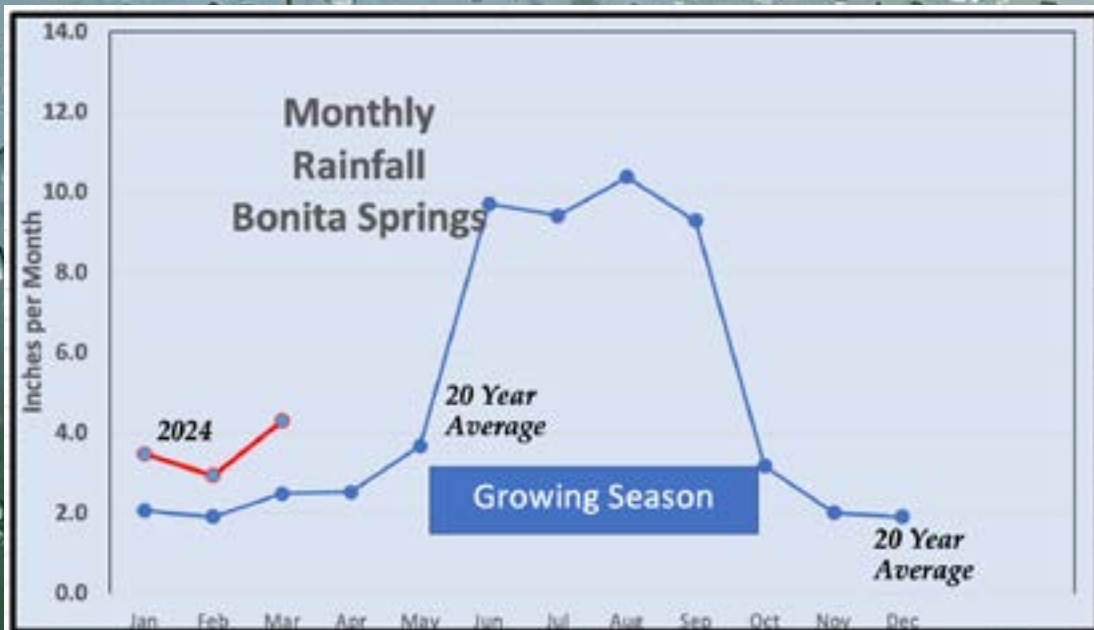


**Autos.** DID YOU KNOW...The speed limit on Olde Cottage Lane is 15 mph. Please drive with caution on our narrow lane. THANK YOU!



# RAINFALL

*The cumulative 2024 rainfall through March is 6 inches above the 20-year average.*



# 2024 Annual Meeting

The 2024 Annual Meeting was held at Pelican Landing Community Center. 32 residents attended. Topics discussed were: Landscaping, Website, Financial Results, Newsletters, Maintenance, Voting Results & Future Projects.

A copy of the presentation slides is available at our website:

Click below:

<https://cottagespl.org>

Photos by John  
Roscich



# Cottages Board



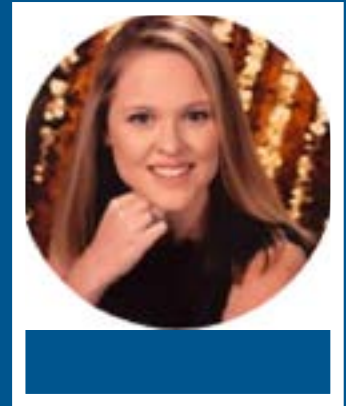
Kiki Scovel  
President /  
Landscaping /  
Website



Paul Barnicke  
Treasurer /  
Maintenance



Dennis Lowe  
Secretary /  
Maintenance /  
Newsletter



Megan Tatum  
Property Manager



Happy Spring!