



Future-Proof Your Career: Unlock the Power of AI

Explore the transformative impact of artificial intelligence on workplace dynamics, productivity, and career opportunities.

Fadi Jawdat Hindi,

Founder & Managing Partner

Instructor of AI, NC State Continuing and Lifelong Education

AI Adjunct Professor of AI, SKEMA Business School



 [linkedin.com/in/fadihindi](https://www.linkedin.com/in/fadihindi)

 [theconsultinglab.us](https://www.instagram.com/theconsultinglab.us)

 fjhindi@theconsultinglab.us

 www.theconsultinglab.us

NC STATE

Continuing and Lifelong Education

<https://lifelonglearning.ncsu.edu/>



THE CONSULTING LAB

TRANSFORMATION HUMANIZED

Welcome to Our AI Webinar

Exploring AI's Role in the Modern Workplace

■ Speaker Introduction

Your speaker is an expert in AI and digital transformation with 31+ years of professional experience in consulting, c-suite, and startups.

■ Webinar Purpose

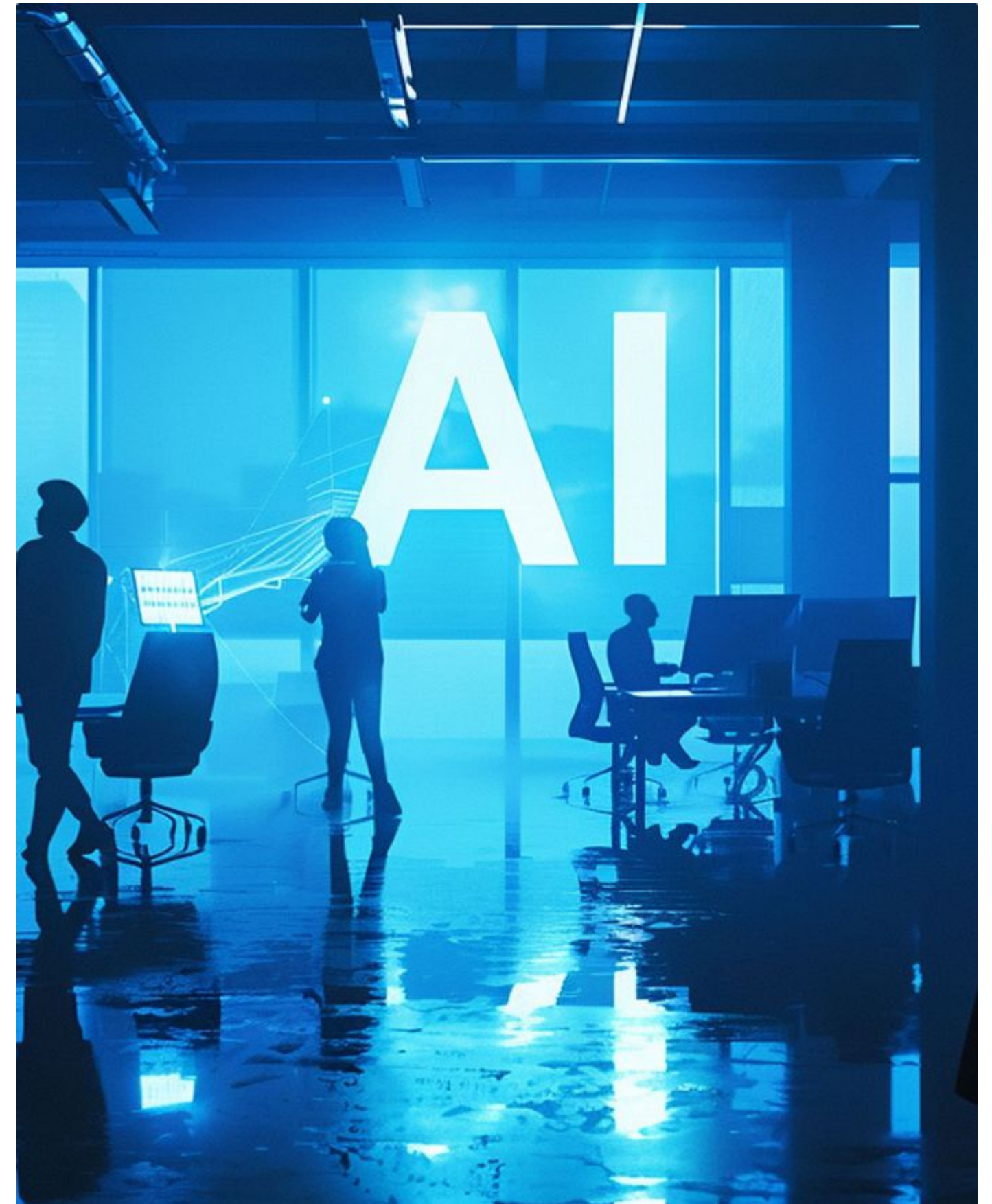
The goal of this webinar is to explore how AI is reshaping the workplace and what actions to take now.

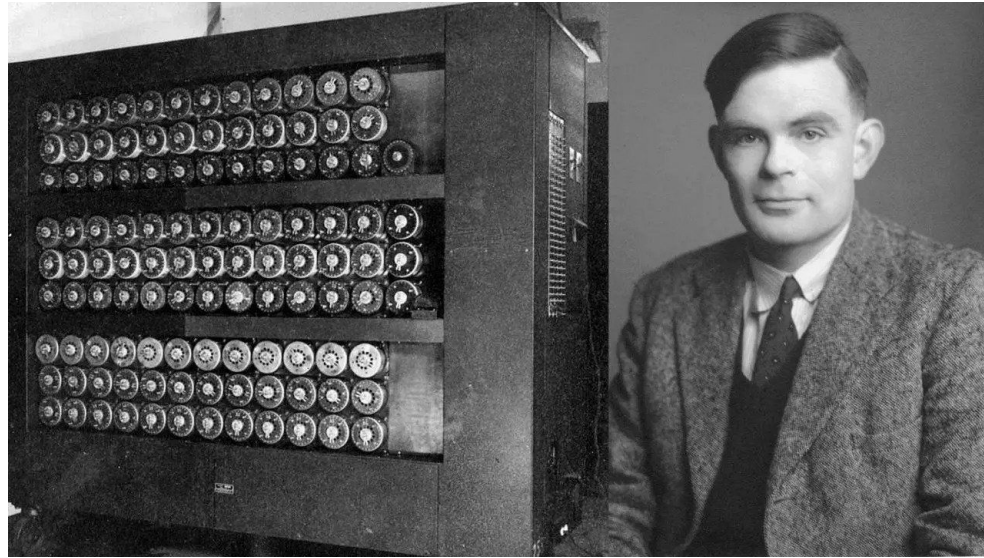
■ Importance of AI Today

AI is not just a trend; it's a transformative force that is changing how we work and interact.

■ Engagement and Interaction

Participants are encouraged to engage and share their thoughts on the impact of AI in their industries.





Source: <https://pivotal.digital/insights/1936-alan-turing-the-turing-machine>

The Evolution of AI

Tracing the Journey of Artificial Intelligence

■ Origins of AI

AI concepts trace back to Turing, who proposed early rules for machine intelligence.

■ Rule-Based Systems

Initial AI systems were rule-based, relying on predefined algorithms to solve problems.

■ Machine Learning Emergence

The evolution of AI saw the introduction of machine learning, allowing systems to learn from data.

■ Deep Learning Revolution

Deep learning techniques emerged, enabling AI to process vast amounts of unstructured data effectively.

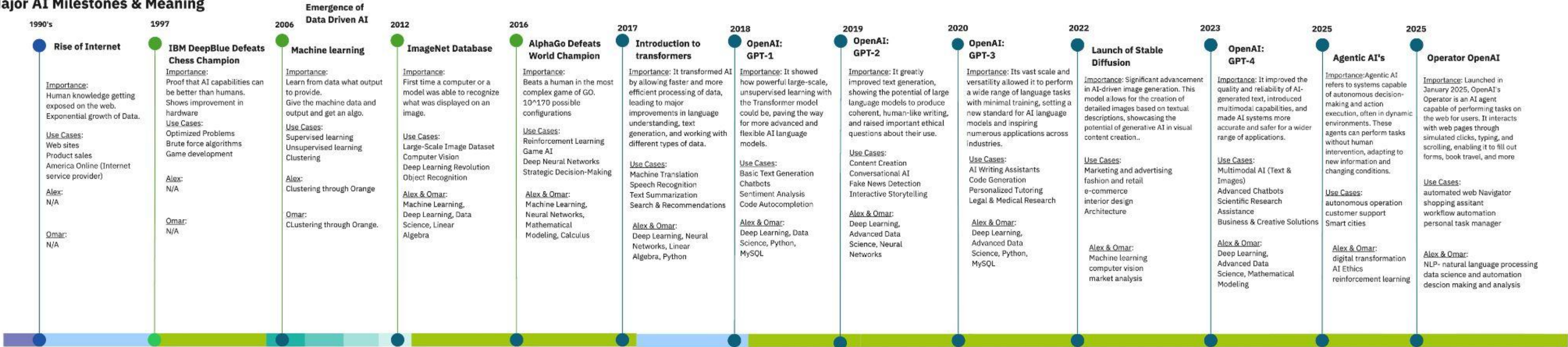
■ Generative AI Explosion

Since 2022, generative AI has gained prominence, creating content and solutions autonomously.

The Evolution of AI

Tracing the Journey of Artificial Intelligence

Major AI Milestones & Meaning



Source: Omar Abdellatif & Alexandre Gallais
<https://www.linkedin.com/in/omar-abdellatif11/>
<https://www.linkedin.com/in/alexandre-gallais-3a5528239/>

Transformative Changes in AI Landscape

Understanding the catalysts for rapid AI progress. Why all this urgency now?

■ Open-source breakthroughs

Recent advancements in large language models and vision models have revolutionized AI capabilities.

■ Enhanced computing power

The increase in computing power has enabled the training of more complex models, driving innovation.

■ Abundant data availability

The exponential growth of data has provided a rich resource for AI development and training.

■ Accessible APIs for developers

APIs have made it easier for developers to integrate advanced AI functionalities into their applications.

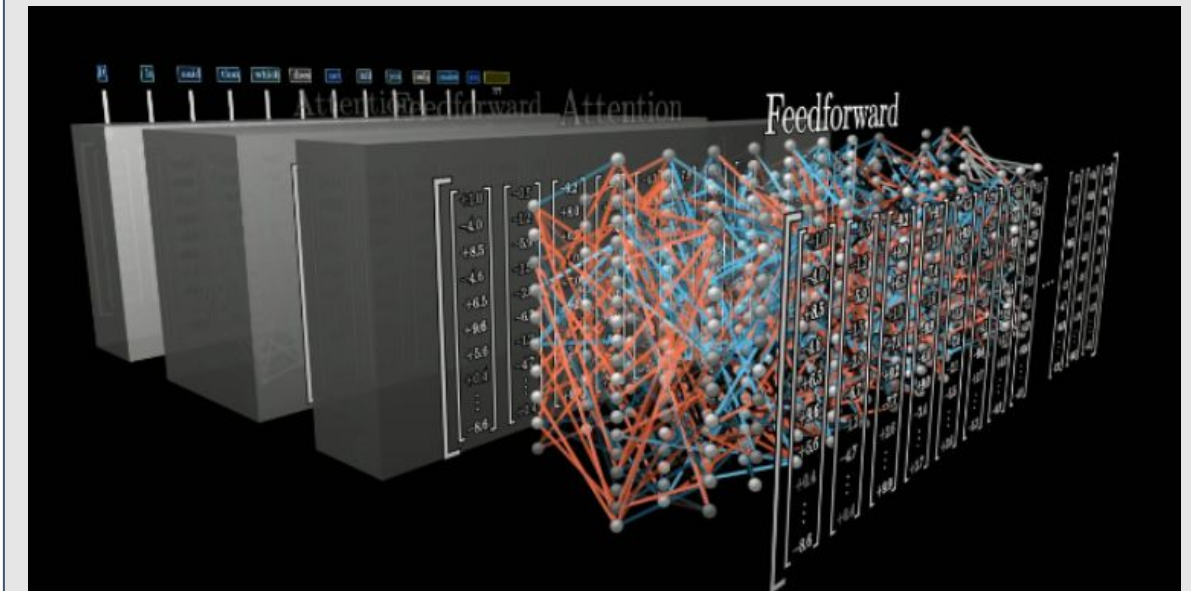
■ Increased business awareness

Businesses are now more aware of how AI can create significant value and improve operations.

■ Exponential user adoption

ChatGPT reached 100M users in just 2 months, showcasing the rapid acceptance of AI technologies.

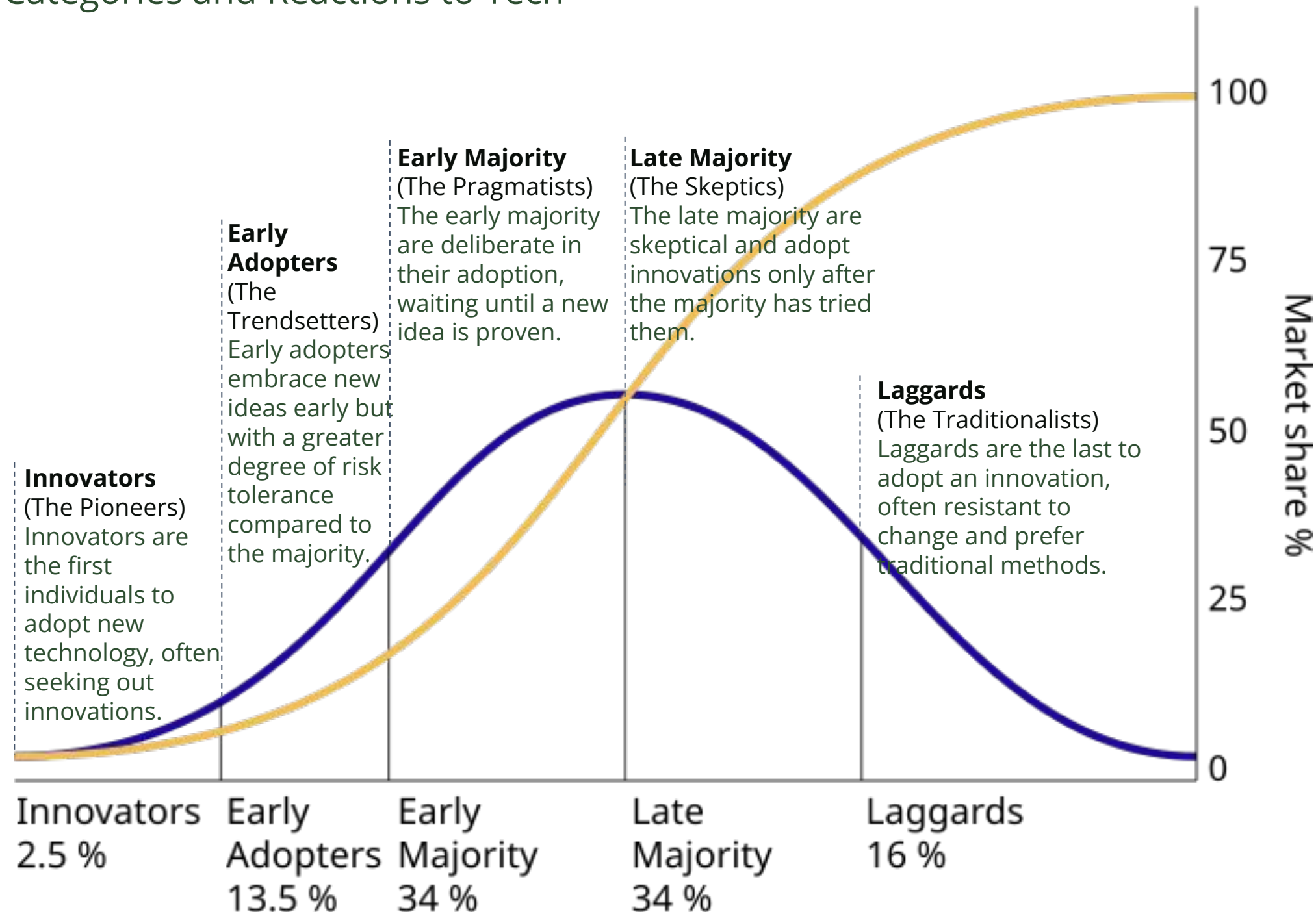
Large Language Models (LLMs) for Beginners
By 3Blue1Brown



<https://youtu.be/LPZh9BOjkOs?si=MNys201tv6Va9-2>

Understanding the Diffusion of Innovation

Exploring Adopter Categories and Reactions to Tech



Source: https://en.wikipedia.org/wiki/Diffusion_of_innovations

Human Reactions to Technology

Responses to new technology can include fear, skepticism, and excitement, influencing adoption.

Identifying Your Position

Understanding where you and your team fit on the curve can guide tech adoption strategies.

NC STATE

Continuing and Lifelong Education

The Rapid Evolution of Work Dynamics

Understanding the Impact of AI on Job Roles

■ AI is redefining roles, not just tasks

Artificial Intelligence is shifting how we approach job responsibilities, focusing on enhancing roles rather than simple task automation.

■ Impact across various sectors

Industries like Marketing, Finance, Customer Service, and Operations are witnessing significant changes due to AI integration.

■ Predicted dominance of AI-native workflows

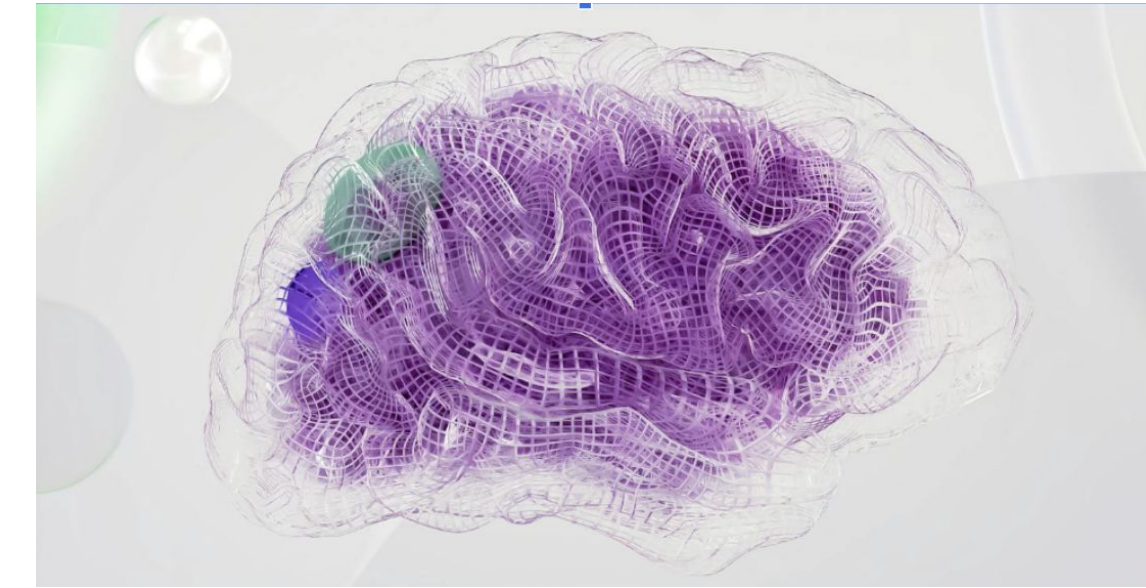
In just two years, workflows designed around AI capabilities are expected to become the standard in workplaces.

■ Quote on the importance of adaptation

“Those who ignore AI may still have a job—just not the same one.” This emphasizes the need for adaptation in an AI-driven landscape.

Prompt Engineering – The New Power Skill

Understanding the Significance of AI Instructions



■ What is Prompt Engineering?

It involves creating precise and effective instructions for AI systems to understand and execute tasks.

■ Importance in Various Roles

Every professional can benefit from mastering prompt engineering, enhancing communication with AI tools.

■ Strategic, Not Just Technical

It's about developing a strategic mindset to leverage AI capabilities rather than just technical skills.

■ Enhancing Productivity

Effective prompts can significantly increase productivity by reducing misunderstandings in AI interactions.

■ Driving Innovation

Prompt engineering fosters innovation by enabling users to explore new possibilities with AI.

■ Improving AI Outcomes

Well-crafted prompts lead to better outputs from AI, ensuring that the technology serves user needs effectively.

■ Building Collaboration Skills

It enhances teamwork as professionals learn to collaborate with AI, blending human creativity with machine efficiency.

Exploring Prompt Engineering Techniques

Insights on Marketing and Analytics Prompts

■ Understanding Marketing Prompts

Distinguishing between good and great marketing prompts requires context, role, and constraints.

■ Role of Context in Prompts

Context shapes the effectiveness of prompts, guiding them to meet specific marketing goals.

■ Constraints in Prompt Engineering

Recognizing constraints helps in crafting prompts that are realistic and actionable.

■ Analytics Prompt Importance

Analytics prompts guide models to derive actionable insights from data effectively.

■ Actionable Insights from Analytics

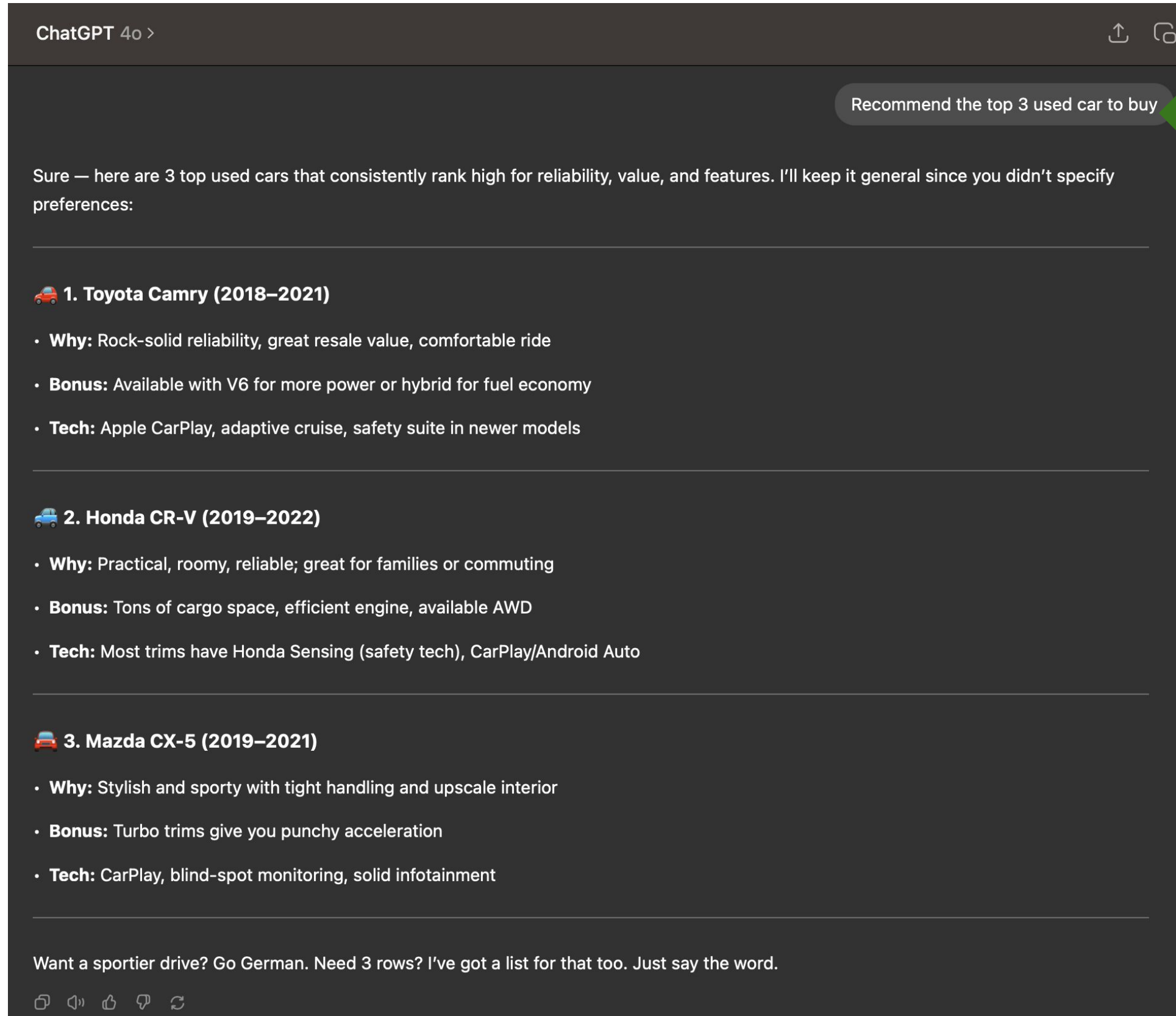
Effective prompts lead to insights that can drive strategic decisions in business.

■ Comparative Outcomes of Prompts

The quality of the outcome improves significantly with smarter prompt engineering.

Exploring Prompt Engineering Techniques

Example of a Poorly Written Prompt



Poor prompt:

Recommend the top 3 used cars to buy

Exploring Prompt Engineering Techniques

Example of a Great Prompt

ChatGPT 4o >

Act as an expert used car advisor. I want a list of the top 3 used SUV models that would be an all around great buy (price, engine performance, all wheel drive, reliability, and reasonable repair costs and 100k miles service costs). My goal is to balance the aspects of all the provided parameters to get the best choice for my family of 4. I mostly do city driving with weekend DIY projects that require hauling material home from Home Improvement stores. I also do the occasional off-road through national parks and forests. While all the parameters are important, exclude vehicles that would cost more than \$30k. Put the result in tabular format.

Here's a curated list of **top 3 used SUV models** under \$30K that offer the **best all-around balance** for a family of 4—combining **AWD, engine performance, reliability, hauling ability, and moderate long-term costs**.

SUV Model	Years to Target	Engine & Performance	AWD & Utility	Reliability & Repair Costs	Why It's a Great Fit
Toyota RAV4 Adventure/TRD	2019–2021	2.5L I4, 203 hp – Smooth, efficient, not a rocket	Standard AWD, off-road capable trims, 3,500 lb tow	Toyota reliability, low repair costs, 100k service under \$1,200 in most cases	Balanced, rugged enough for trails, roomy cargo, top-tier dependability
Subaru Outback Onyx XT	2020–2021	2.4L turbo flat-4, 260 hp – Punchy and responsive	AWD standard, 8.7" clearance, 3,500 lb tow	Excellent AWD engineering, reasonable parts/labor costs, low cost of ownership	Comfortable family cruiser with hidden adventure chops, surprisingly quick
Honda Passport EX-L	2019–2021	3.5L V6, 280 hp – Strong acceleration and torque	AWD available, 5,000 lb tow, spacious cargo	Honda reliability, typical 100k mile service ~\$1,300, affordable long-term upkeep	Powerful yet practical, great for DIY hauls and road trips, roomy for family comfort

Quick Recap:

- All three have **AWD, solid engines, under \$30K**, and are known for **lasting well past 100k miles**.
- **RAV4** = Best reliability + decent utility
- **Outback XT** = Best blend of comfort + off-road + turbo fun
- **Passport** = Best for hauling + space + strong V6

Let me know if you want to prioritize **sportiness, luxury feel, or fuel efficiency**, and I can fine-tune the list.

Great prompt:
Act as an expert used car advisor. I want a list of the top 3 used SUV models that would be an all around great buy (price, engine performance, all wheel drive, reliability, and reasonable repair costs and 100k miles service costs). My goal is to balance the aspects of all the provided parameters to get the best choice for my family of 4. I mostly do city driving with weekend DIY projects that require hauling material home from Home Improvement stores. I also do the occasional off-road through national parks and forests. While all the parameters are important, exclude vehicles that would cost more than \$30k. Put the result in tabular format.

Some Prompting Techniques That Are Next Level:

- Chain of thought
- Tabular prompting
- Ask before generating
- Shot prompting
- Critique prompting
- Comparative prompting
- Compare & contrast prompting
- Act as prompting

Prompt Engineering Course

Enhance Your Skills in AI with Hands-On Experience

■ Launch Date

The course will commence on May 21, 2025.

■ Course Overview

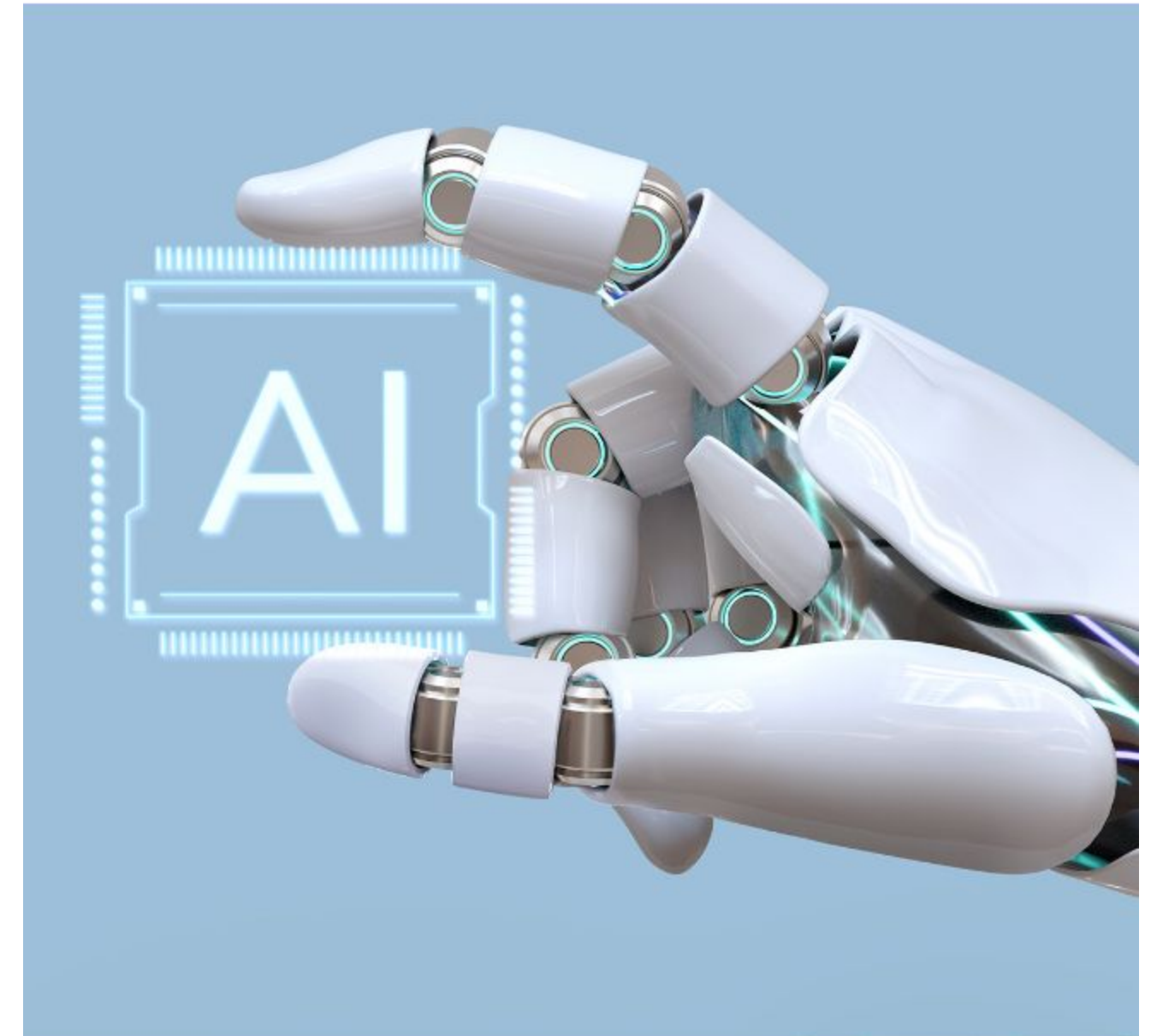
This is a 6-week certification course featuring hands-on labs and integration of AI strategies.

■ Target Audience

Designed for professionals, managers, and innovators looking to enhance their AI skills.

■ Enrollment Process

To join the course, visit the NC State website or use the provided QR code.



Take Charge with AI Today

Take The Full Course - 15 hours of Synchronous Learning - Earn a Certificate from NC State Continuing and Lifelong Education

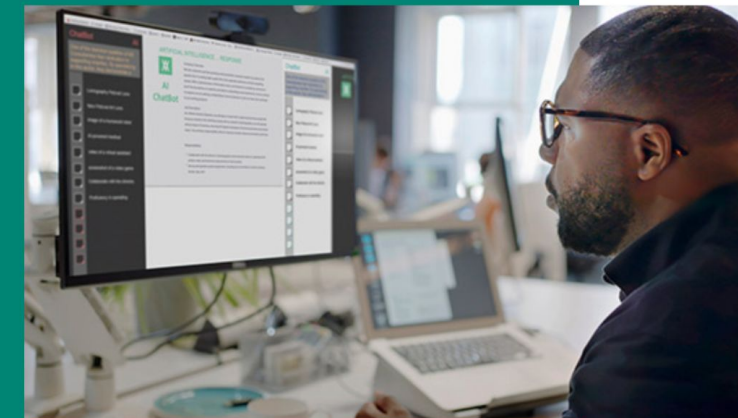
REGISTER - LIMITED TO 15 SEATS ONLY: <https://lifelonglearning.ncsu.edu/ai-prompt-engineering/>

AI Prompt Engineering

Register now for this exclusive masterclass in AI for career and business transformation.

What You'll Take Away

- > **Real-World AI**
Bridge theory with practical experience, learning from hard-won lessons.
- > **C-Suite Strategies**
Navigate workplace politics and hierarchies to drive AI adoption.
- > **Industry Deep Dives**
Explore AI's impact across healthcare, finance, government, and more.
- > **Proven ROI**
Discover how AI delivers tangible results: slashing onboarding, detecting fraud, and accelerating transactions.
- > **Insider Insights**
Gain cutting-edge knowledge from a startup advisor and mentor.
- > **Everyday AI**
Deploy AI to boost productivity, decision-making, and creativity.
- > **AI for Everyone**
Learn to leverage AI, regardless of your role or company size.



NC STATE

Continuing and Lifelong Education

Thank You Q&A

- **Open Floor for Questions**

- **Contact Us**



[linkedin.com/in/fadihindi](https://www.linkedin.com/in/fadihindi)



[theconsultinglab.us](https://www.instagram.com/theconsultinglab.us)



fjhindi@theconsultinglab.us



www.theconsultinglab.us

<https://lifelonglearning.ncsu.edu/>

- **Webinar Slides**

Download this presentation - Use freely - Please credit The Consulting Lab Inc. & NC State Continuing & Lifelong Education.



NC STATE

Continuing and Lifelong Education