



Scaling AI* Across the Enterprise Is A Strategic Imperative

Tuesday, July 15, 2025 - ReCity, Durham, NC



Fadi Jawdat Hindi

Founder & Managing Partner, The Consulting Lab Inc

Adjunct Professor of AI — NC State University

& SKEMA Business School

[linkedin.com/in/fadihindi/](https://www.linkedin.com/in/fadihindi/)

tcliadvisory.com

tcliacademy.com



*Both Generative and Non-Generative (Machine Learning & Predictive Modeling)

AI Is The Biggest Wave Of Change For Enterprises

Understanding the significance of increasing AI investments and overcoming deployment challenges

- 1 High Investment in AI** **92%** of companies are increasing their **AI budgets** for growth & efficiency.
- 2 Low Maturity Levels** **~1%** of companies achieve true **scale**
-> maturity improvement needed.
- 3 Pilot Projects vs. Deployment** **Significant gap** between pilots and **Scaled Deployments**
-> Imposes a strategic hurdle.
- 4 Need for Strategic Growth** Develop strategies to bridge the **gap** between experimentation and implementation.
- 5 Unlocking AI Potential** Focused efforts to scale AI will unlock its **potential** -> Enhanced operational efficiency and competitive advantage.

The Explosion Of Data Creates An Unprecedented Opportunity

Converging factors are creating the perfect storm for AI use cases in Business

1 Explosive growth in data
Massive increase in data generation

2 Compute capabilities expanding
Enhanced processing power for AI

3 Proven business impact
Significant results from AI

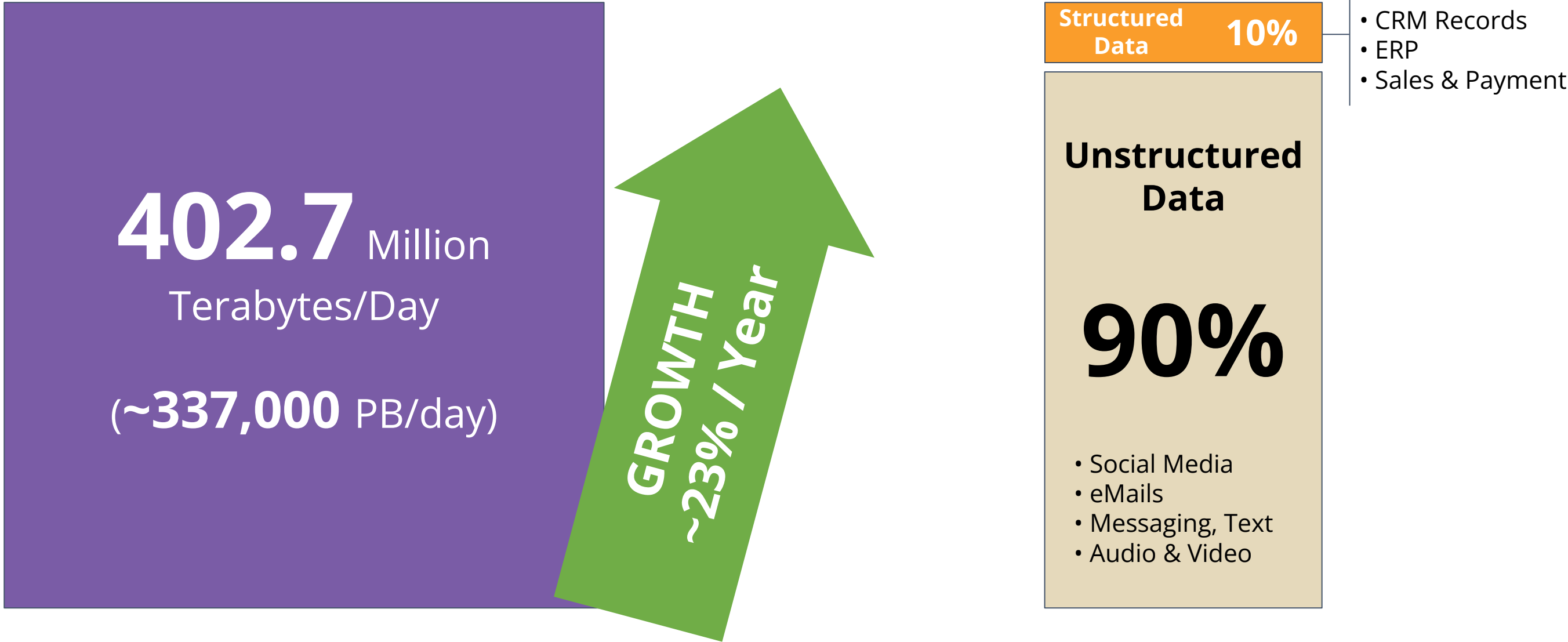
5 Higher efficiency gains
1.5× ROIC achieved with AI

4 Faster revenue growth
AI accelerates financial success



The Explosion Of Data Creates An Unprecedented Opportunity

TCLi Estimates for Global Enterprise Data Generation (2024 - 2025)

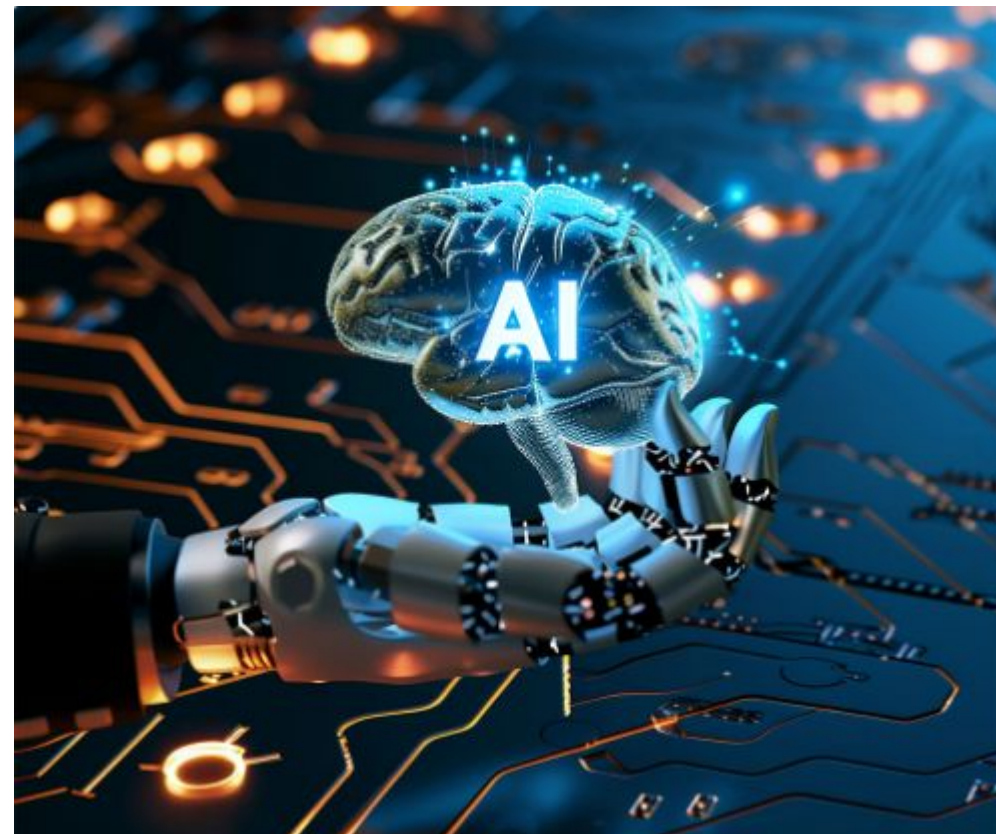


Critical Success Factors For AI Adoption & Scale

Various factors contribute to the success of implementing AI in the Enterprise. The Highest impact ones are

Executive sponsorship is critical

To ensure successful AI adoption, strong support from executive leadership is essential. Their commitment can drive alignment and resource allocation across the organization.



Focus on high-value use cases

Identifying and selecting use cases that deliver maximum business value enhances the likelihood of success. Prioritize those that improve efficiency, cut costs, and drive innovation.



Drive efficiency and innovation

Use cases should not only aim for cost savings but also foster innovation. This dual focus can lead to significant improvements in operational capabilities.



Data Readiness Is The Single Most Critical Enabler

90% of AI Projects (incl. Generative AI for Enterprises)
relies on Data and its readiness.



Data Quality

Critical for reliable AI outcomes and performance.



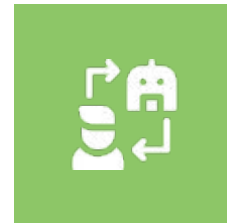
Structured Strategies

Organizing data for improved accessibility and usability.



Synthetic Solutions

Creating artificial data to support training and testing.



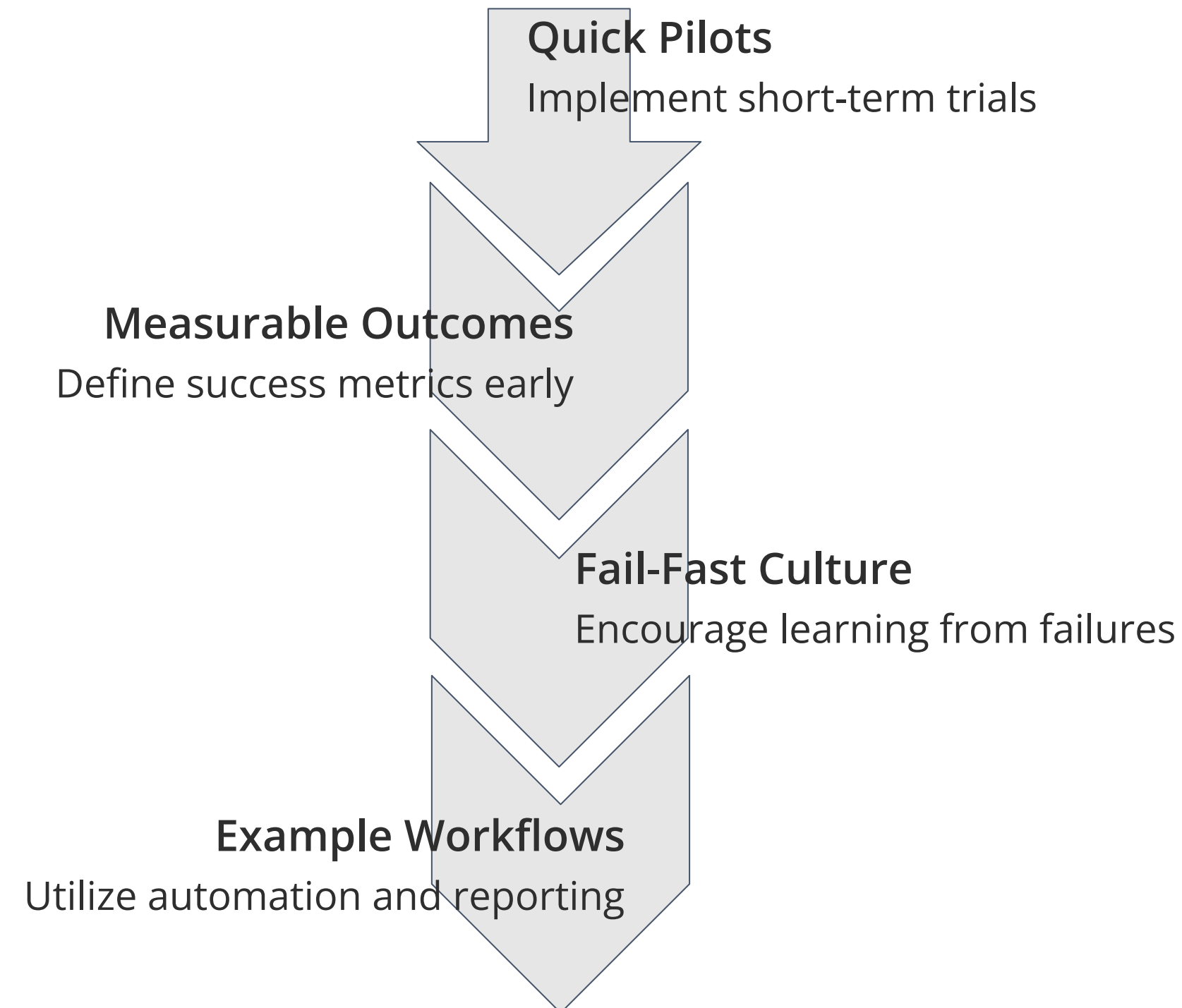
RAG & Graphs

Utilizing RAG and knowledge graphs for enhanced insights.



Demos Beat All Other Techniques In Demoing Value

'Show me' is the most effective mechanism to create conviction, especially with disillusioned execs.



Scaling AI Must Follows Successful Pilots, Esp. for \$100M+ Orgs.

The agility of the Enterprise Decreases with the size of its revenues, customers, and employees



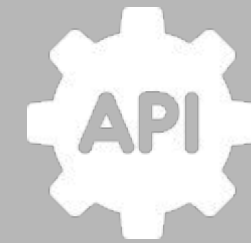
Define Strategy

Establish a robust **strategy** that aligns AI initiatives with business objectives, ensuring all stakeholders understand the goals and expected outcomes of AI adoption.



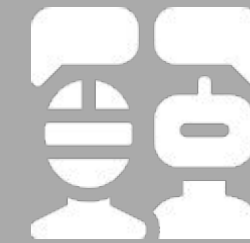
Manage Data Effectively

Focus on **data** quality and accessibility, as well as establishing protocols for data governance, to ensure that AI systems operate on reliable and relevant datasets.



Implement Pilot Programs

Conduct **pilots** to test AI applications in controlled environments, allowing organizations to refine their approaches and validate AI's effectiveness before broader deployment.



Govern & Scale

Create a solid **governance** framework that oversees AI operations, ensuring compliance, ethical usage, and accountability within AI systems in the organization.

Innovative Architecture and AI Orchestration

Exploring composable architectures and the role of AI agents in automating workflows

- **Composable, modular architectures**

Utilizing **tech sandwiches** enables flexibility and scalability in system design, allowing for easier integration of various technologies.

- **Role of AI agents**

AI agents can significantly reduce manual efforts by automating **complex workflows**, leading to enhanced efficiency and productivity.

- **Benefits of modularity**

A composable approach allows organizations to adapt swiftly to changing demands through **modular components** that can be updated independently.

- **Automation of workflows**

Integrating AI agents into processes minimizes errors and accelerates task completion, transforming the landscape of **work efficiency**.

Establishing Governance for Responsible AI

Effective governance is essential for managing AI risks and ensuring compliance with regulations.



Implementing risk management frameworks

Developing structured approaches to identify, assess, and mitigate risks associated with AI systems is crucial for organizations.



Adopting adaptive governance models

Creating flexible governance structures that can evolve with changing technologies and regulations ensures continued effectiveness and relevance.



Embedding privacy and security measures

Integrating robust privacy and security practices throughout the AI lifecycle protects sensitive data and complies with legal requirements.



Ensuring regulatory compliance

Establishing processes that align AI operations with current laws and regulations safeguards against legal repercussions and builds trust.

25%

Rapid adoption of **agentic AI** technologies

In just 3 months, **25%** of enterprises adopted **agentic AI**, demonstrating a significant shift towards AI integration.

50%

Projected **AI** adoption by 2027

By 2027, it is anticipated that **50%** of organizations will have integrated **agentic AI**, reflecting growing confidence in its benefits.

50%

Hospitality productivity improvement

A case study in hospitality showed a **50%** faster creation of data models, highlighting AI's impact on operational efficiency.

Momentum in Agentic AI Adoption

Exploring rapid growth and productivity
gains in AI across industries



Balancing People and Technology in Change Management

Strategies for successful AI adoption focusing on culture and training initiatives

Prioritize people and culture over technology deployment

Focus 70% of efforts on fostering a supportive culture.

Implement peer-led training for effective learning

Encourage team members to lead training sessions.

Conduct workshops to engage participants actively

Hands-on workshops enhance understanding and retention.

Launch AI literacy campaigns to boost understanding

Educate employees about AI's relevance and impact.

Global Trends in AI Adoption by TCLi

Understanding regional and sector variations in AI implementation strategies

Executive Priority

There is a noticeable increase in **executive** focus on the **strategic** implementation of **AI** across organizations.

Regional Maturity Variability

Maturity levels of **AI** adoption vary significantly, with **NA** and **EU** leading, while **APAC** shows rapid acceleration.

Emerging Markets Catching Up

Emerging markets are rapidly closing the gap in **AI** adoption, showcasing their growing potential in the global landscape.

From Experimentation to Integration

Companies are transitioning from **experimentation** with **AI** to embedding it within core **business processes** and strategies.

Shift in Business Strategies

Organizations are increasingly recognizing the need to align their **enterprise strategy** with **AI** capabilities for competitive advantage.

Solutions To Navigating AI Adoption In The Enterprise

The potential pitfalls that need to be addressed by an effective AI implementation and scaling.

1

ROI Gaps

Organizations often face difficulties in measuring the **return on investment** from AI initiatives, leading to uncertainty and underperformance.

2

Data Failures

Inadequate data quality and management can lead to **governance failures**, impacting the effectiveness of AI systems.

3

Governance Issues

Without proper **governance**, AI strategies may falter, resulting in misalignment with business objectives and regulatory compliance.

4

Hallucination

AI models may produce **hallucinations**, generating incorrect or misleading information, which can undermine trust and reliability.

5

Regulatory Challenges

Navigating the **regulatory landscape** is crucial, as non-compliance can lead to significant legal and financial repercussions.

6

Anticipation Strategies

Anticipating potential pitfalls allows organizations to develop proactive measures to **mitigate risks** associated with AI adoption.

7

Effective Mitigation

Implementing robust processes and continuous monitoring can significantly enhance the chances of successful **AI integration** and usage.

Supercharging AI Adoption: Actionable Strategies for Success

Unlock your organization's potential
through strategic AI initiatives and
effective governance

- 1 Think big about AI adoption.**
Envision the future impact of AI.
- 2 Start small with pilot projects.**
Implement manageable AI solutions first.
- 3 Scale fast for maximum impact.**
Rapidly expand successful initiatives.
- 4 Govern wisely through oversight.**
Ensure proper management and compliance.
- 5 Seize the opportunity now.**
Act decisively to lead in AI.



Ready?

Whether you're navigating complexity as a leader, launching something bold as a founder, or driving change as a transformation champion, **let's talk.**

 tcliadvisory.com

 tcliacademy.com

 admin@theconsultinglab.us

 [theconsultinglabinc](https://www.youtube.com/theconsultinglabinc)

 [theconsultinglab.us](https://www.instagram.com/theconsultinglab.us)





THE CONSULTING LAB