

# Reference Architecture Value Accelerators with SAP Signavio Process Explorer

powered by:  
*Value Acceleration Delivery (VAD) practice*

**Enablement & Delivery Team**

# Disclaimer

The information in this presentation is confidential and proprietary to SAP and may not be disclosed without the permission of SAP. Except for your obligation to protect confidential information, this presentation is not subject to your license agreement or any other service or subscription agreement with SAP. SAP has no obligation to pursue any course of business outlined in this presentation or any related document, or to develop or release any functionality mentioned therein.

This presentation, or any related document and SAP's strategy and possible future developments, products and or platforms directions and functionality are all subject to change and may be changed by SAP at any time for any reason without notice. The information in this presentation is not a commitment, promise or legal obligation to deliver any material, code or functionality. This presentation is provided without a warranty of any kind, either express or implied, including but not limited to, the implied warranties of merchantability, fitness for a particular purpose, or non-infringement. This presentation is for informational purposes and may not be incorporated into a contract. SAP assumes no responsibility for errors or omissions in this presentation, except if such damages were caused by SAP's intentional or gross negligence.

All forward-looking statements are subject to various risks and uncertainties that could cause actual results to differ materially from expectations. Readers are cautioned not to place undue reliance on these forward-looking statements, which speak only as of their dates, and they should not be relied upon in making purchasing decisions.



# Agenda

- **Customer Expectations & Needs**  
**Enterprise Architecture as a Service**
- **Enterprise Architecture Framework (EAF)**  
**Framework & Core Elements**
- **One Process Acceleration Layer (OPAL)**  
**SAP Signavio Process Explorer**
- **Early Adopter Care Program**  
**What is coming up? Customer Nominations & Support**
- **How to stay informed?**  
**General information, contacts & resources**
- **Q&A**



# Agenda

- **Customer Expectations & Needs**  
**Enterprise Architecture as a Service**
- Enterprise Architecture Framework (EAF)  
Framework & Core Elements
- One Process Acceleration Layer (OPAL)  
SAP Signavio Process Explorer
- Early Adopter Care Program  
What is coming up? Customer Nominations & Support
- How to stay informed?  
General information, contacts & resources
- Q&A



## Setting the Stage - The Future of ERP is process-led

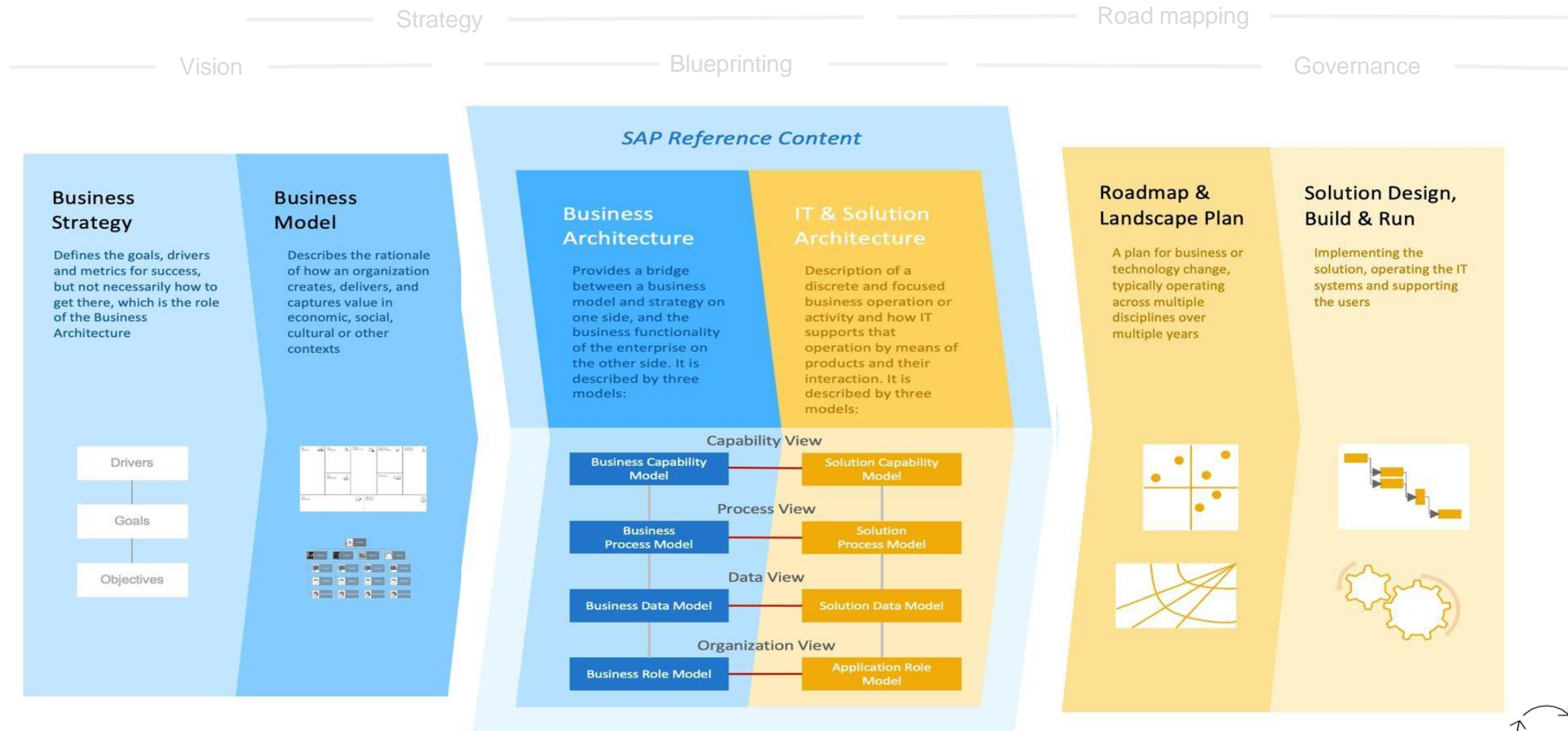






# SAP Enterprise Architecture Methodology

Linking Business and IT



# Agenda

- Customer Expectations & Needs  
Enterprise Architecture as a Service
- **Enterprise Architecture Framework (EAF)**  
**Framework & Core Elements**
- One Process Acceleration Layer (OPAL)  
SAP Signavio Process Explorer
- Early Adopter Care Program  
What is coming up? Customer Nominations & Support
- How to stay informed?  
General information, contacts & resources
- Q&A



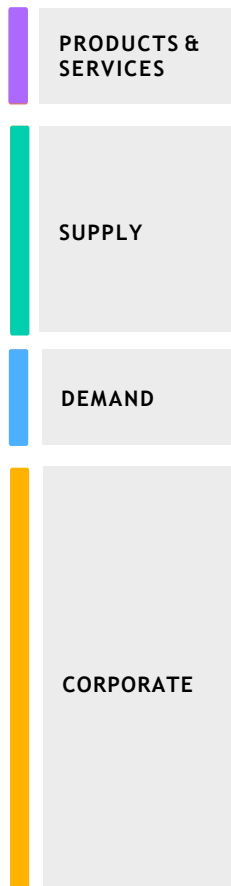


# SAP Reference Business Architecture – Core Elements

## The Value of an Integrated Capability and Process Model

### Enterprise Domains

Businesses can be structured along the 4 Enterprise Domains.



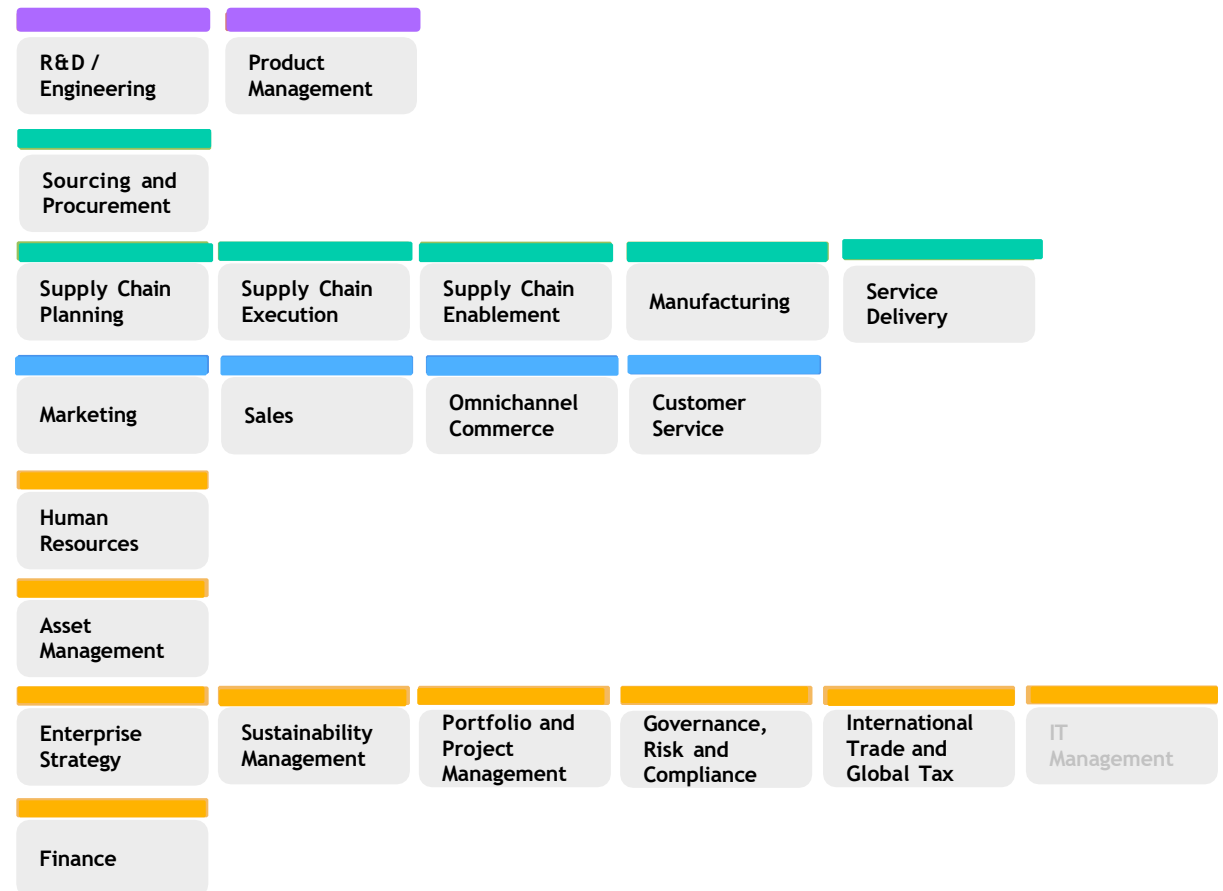
### Business Process Model

The Value Chain of an Enterprise can be described by 8 Generic Business Processes, defining the building blocks and template to model Business Processes.

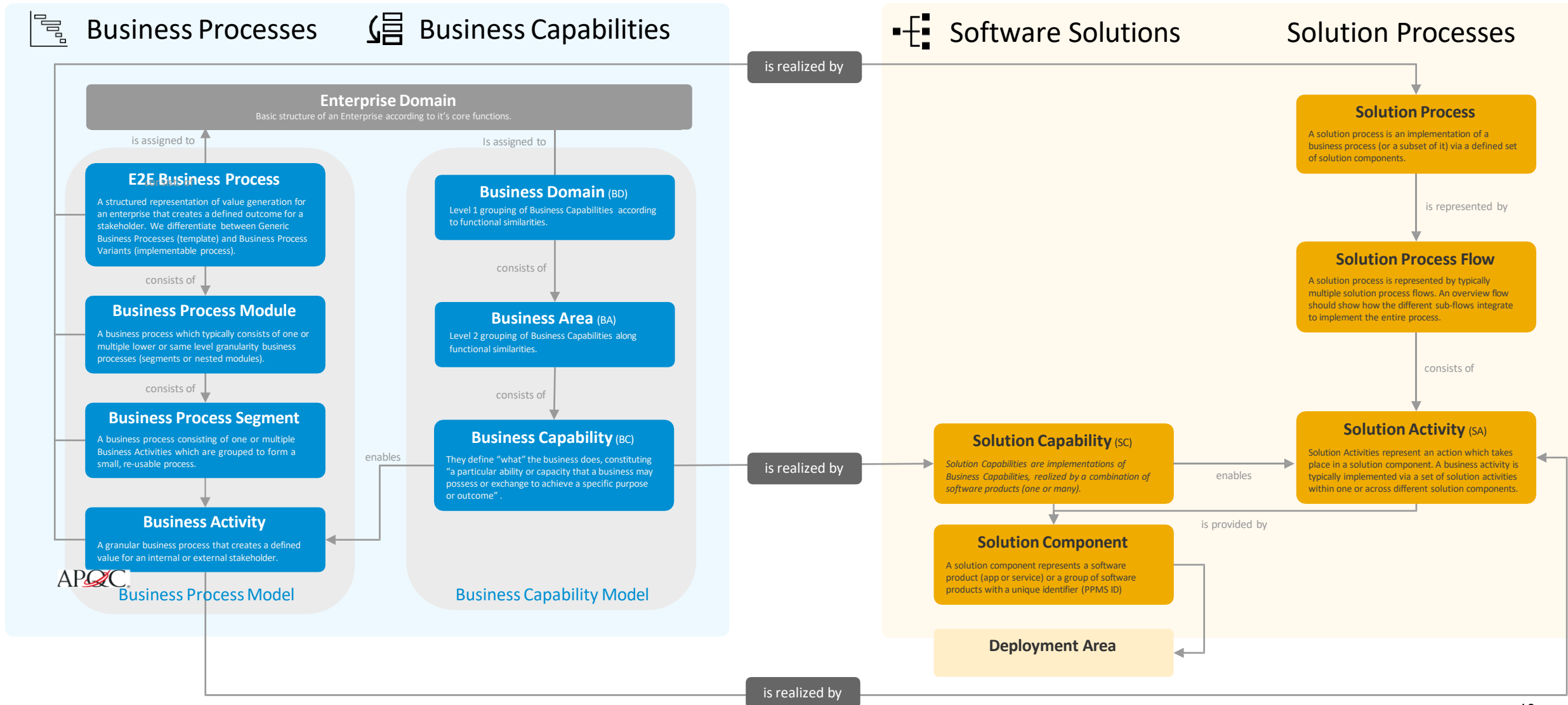


### Business Capability Model

Business Capabilities describe the ability of an Enterprise to deliver value. They are hierarchically structured by Business Domains.



# Business Architecture – Reference Architecture Metamodel

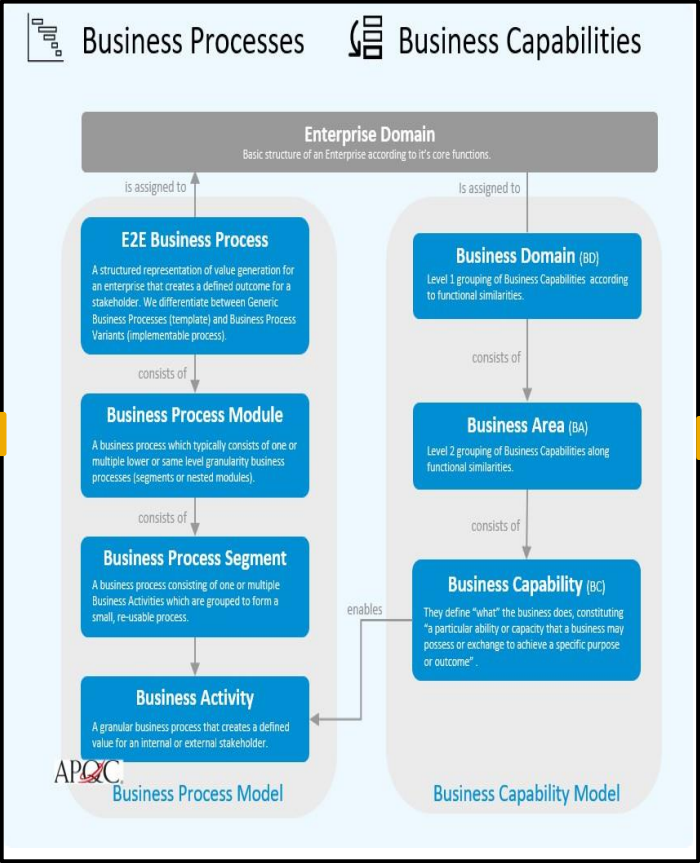




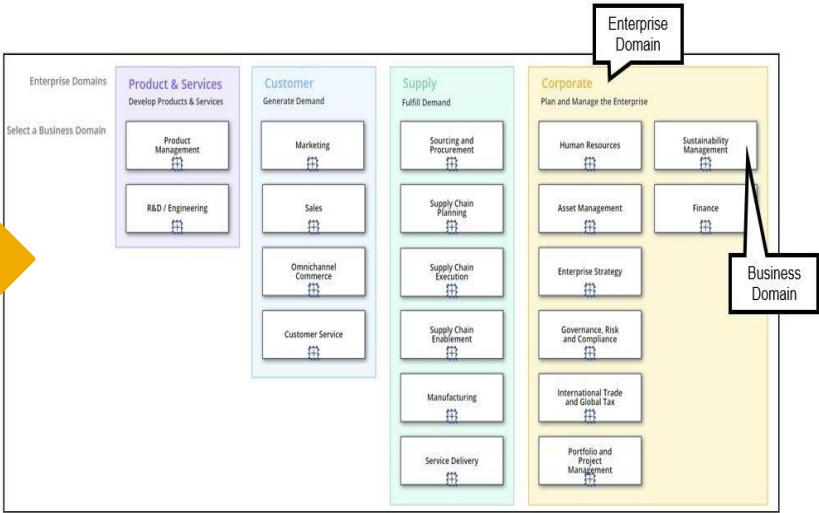
# SAP EA Content @ SAP Signavio Process Explorer



Navigation to Reference Solution Architecture



Navigation to Reference Solution Architecture



# Agenda

- Customer Expectations & Needs  
Enterprise Architecture as a Service
- Enterprise Architecture Framework (EAF)  
Framework & Core Elements
- **One Process Acceleration Layer (OPAL)**  
**SAP Signavio Process Explorer**
- Early Adopter Care Program  
What is coming up? Customer Nominations & Support
- How to stay informed?  
General information, contacts & resources
- Q&A





# SAP Signavio Process Transformation Suite – Our Product Portfolio 2023

## SAP Signavio Process Explorer

Access value accelerators and speed up your transformation projects

## SAP Signavio Process Manager

Capture, document, compare, and simulate your process portfolio.

## SAP Signavio Journey Modeler

Design customer journeys and connect with process.

## SAP Signavio Process Intelligence

Embrace a data-driven approach to discover, analyze, and mine your end-to-end processes.

## SAP Signavio Process Governance

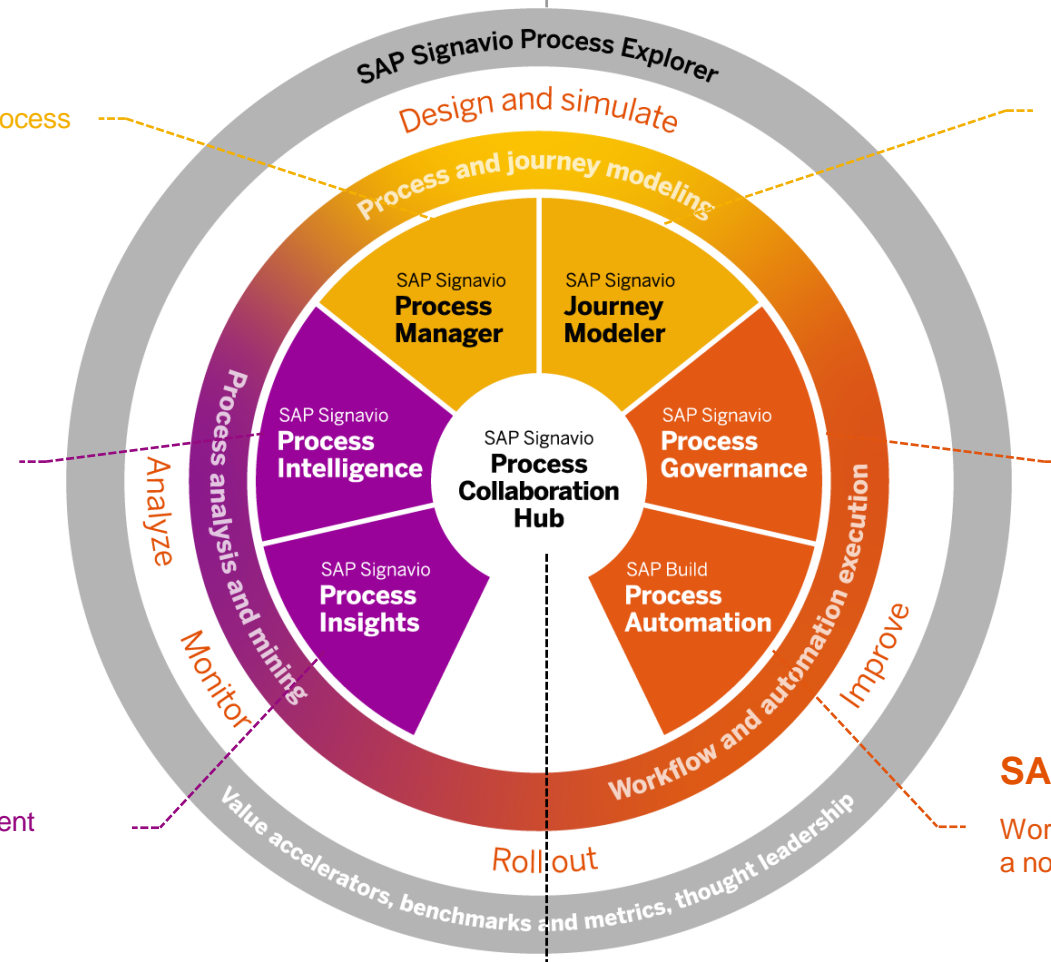
Manage and drive process management related tasks and governance in a human centric way.

## SAP Process Insights

Locate and prioritize process improvement potential for specific SAP systems.

## SAP Process Automation<sup>1</sup>

Workflow management and RPA capabilities with a no-code citizen developer experience

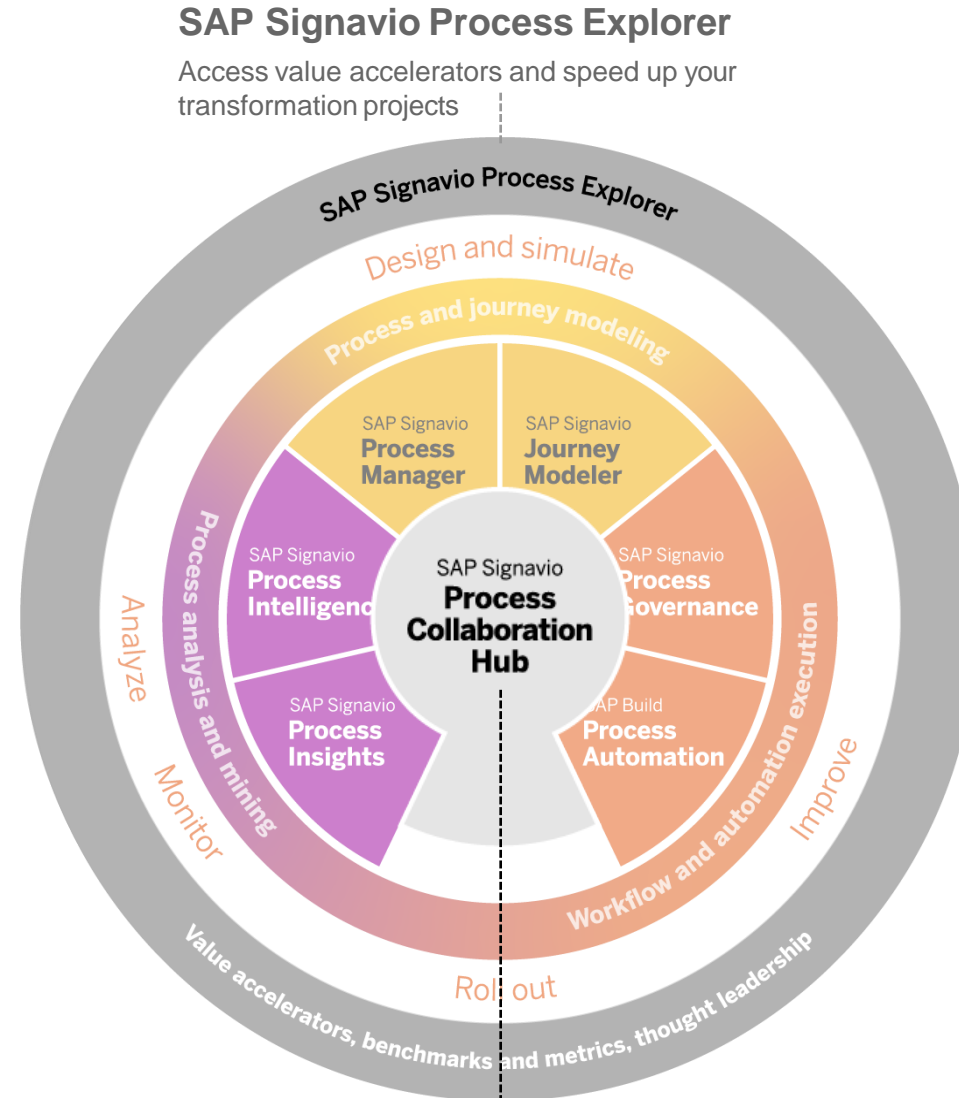


## SAP Signavio Process Collaboration Hub

Enable insights consumption and enterprise collaboration.

# Primary Components of Signavio Leveraged in the content

- ✓ **Modelling of E2E Business Processes & Business Capabilities** and reusing items from a central generic set of processes
- ✓ **Achievement of** process transparency and orchestration by supporting process standardization and documenting company-wide process models



## SAP Signavio Process Collaboration Hub

Enable insights consumption and enterprise collaboration.

- ✓ **Designed** processes based on best practices and modeling standards
- ✓ **Creation of** dictionary entries with organization-specific terminology and shared actions
- ✓ **Aligning and building Reference Architecture content for Industry** Standard Packages and SAP Standard Content (SSC) across the Industry portfolio



# Our terminology

**Note:** Name of team internally at SAP Signavio that is creating the content is called VAD – Value Accelerator Delivery

## One Process Acceleration Layer: the practice of developing and collecting value accelerators

One **central access** to  
business process  
accelerators

Process knowledge  
**and content** for business  
process management

**Accelerated**  
transformations to  
improve time to value

Content that connects  
processes, applications,  
and technology

## SAP Signavio Process Explorer: the main entry point, the product

## Value Accelerators: the content

### One Process Accelerations Layer

#### SAP Signavio Process Explorer



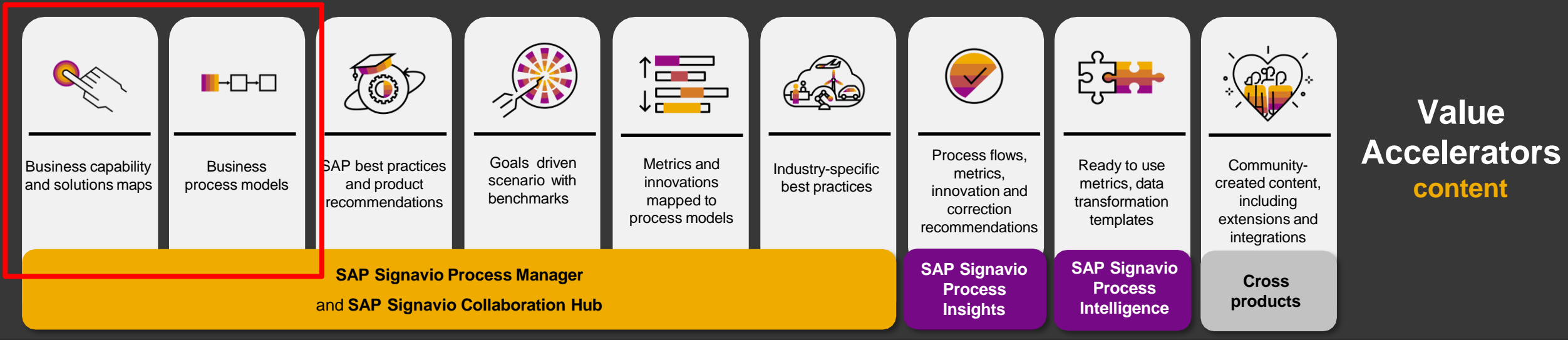
#### Value Accelerators



# SAP Signavio Value Accelerators



A value accelerator **can be specific for a theme** (such as product, industry..), serves the need of different products, and may include **one or a combination** of the following:



**Powered by the One Process Acceleration Layer practice**

50 years of process and industry experience of SAP  Ecosystem

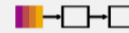
## SAP Signavio Process Manager and SAP Signavio Collaboration Hub



Business capability  
and solutions  
maps

Capabilities

- Business Capability Model (BCM) consisting of 20 business domains describing WHAT an organization needs to deliver business value and to be successful.
- Business Capabilities defined here are considered “MECE” – Mutually Exclusive and Collectively Exhaustive
- Consists of a Reference Business Architecture (RBA) and Reference Solution Architecture (RSA)

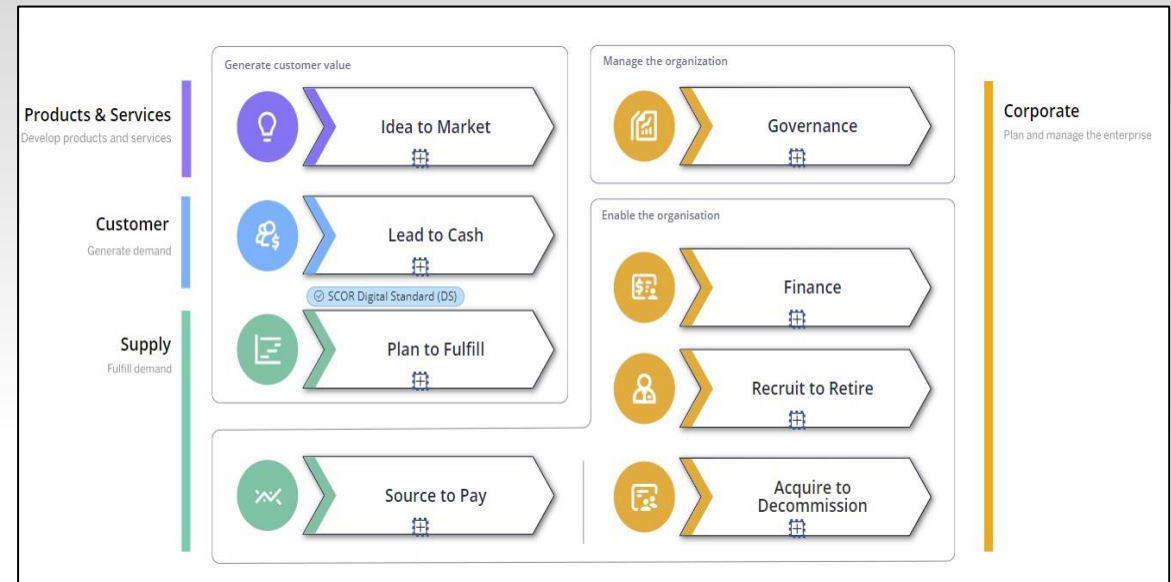
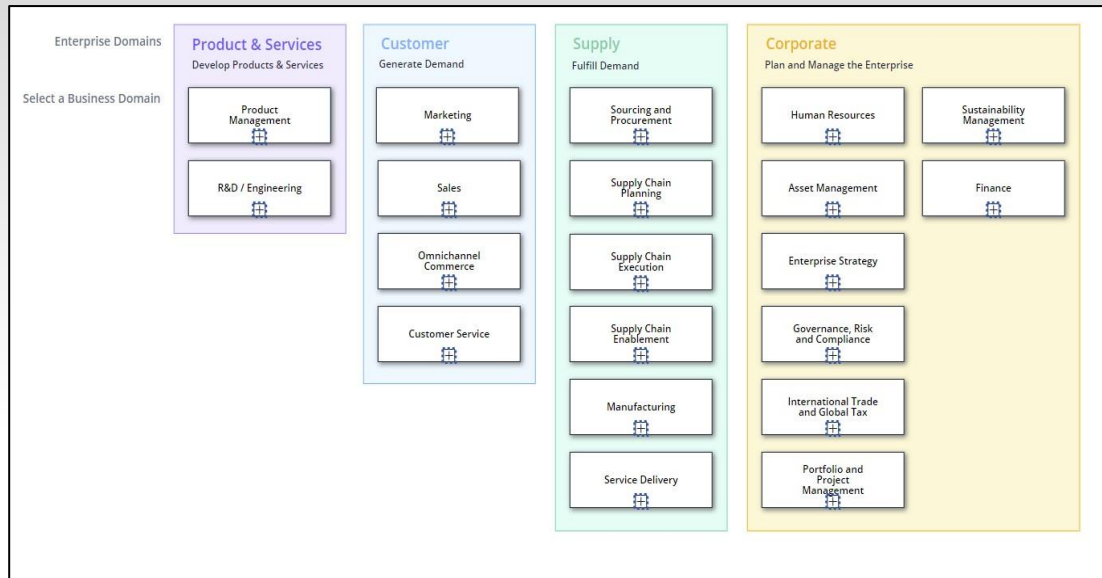


Business  
process models

Processes

- Business Process Model (BPM) consisting of 8 E2E generic business processes that describe the business processes of an enterprise.
- E2E business processes are the foundation for business process variants that a business would look upon for process improvements, best practice alignment and overall implementation recommendations.
- Consists of a Reference Business Architecture (RBA) and Reference Solution Architecture (RSA)

Value  
Accelerators  
content



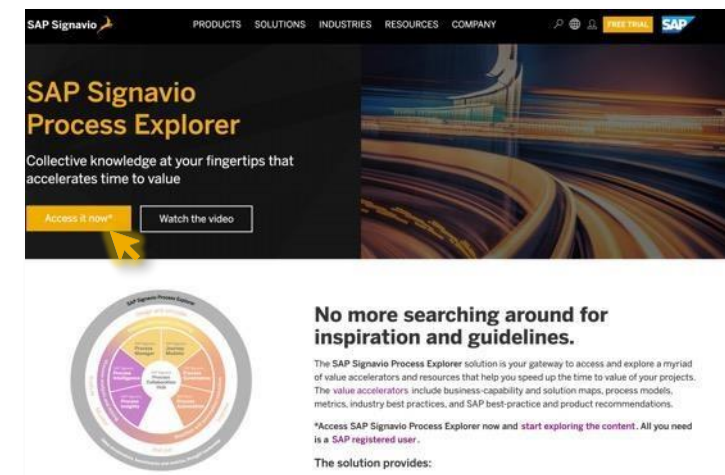




# How Do I Access?

# SAP Signavio Value Accelerators

Access a myriad of Value Accelerators via the SAP Signavio Process Explorer



Visit [www.signavio.com](https://www.signavio.com)

To access the Value Accelerators via our SAP Signavio Process Explorer click on **“Products”**

Use the dropdown under “product” and click on **“SAP Signavio Process Explorer”** to access the page

When you enter the SAP Signavio Process Explorer page, click on **“Access it now”**. Users can access via P-, S- or I/D-user ID – to request [a user ID, please direct them to this SAP account creation site](#)



## How Customers Use the Reference Architecture Content

- ❖ Business driven scoping along processes and/or capabilities
- ❖ Use capability model to define IT ownership / responsibilities
- ❖ Explore available business and solution processes
- ❖ Use as starting point for business process and capability model (if not existing)
- ❖ Use reference guidance to define customer target architecture
- ❖ Augment own process / capability model with information from RBA/RSA
- ❖ Understand SAP white space or partner coverage

Fit2Standard

Target  
State Definition



# Agenda

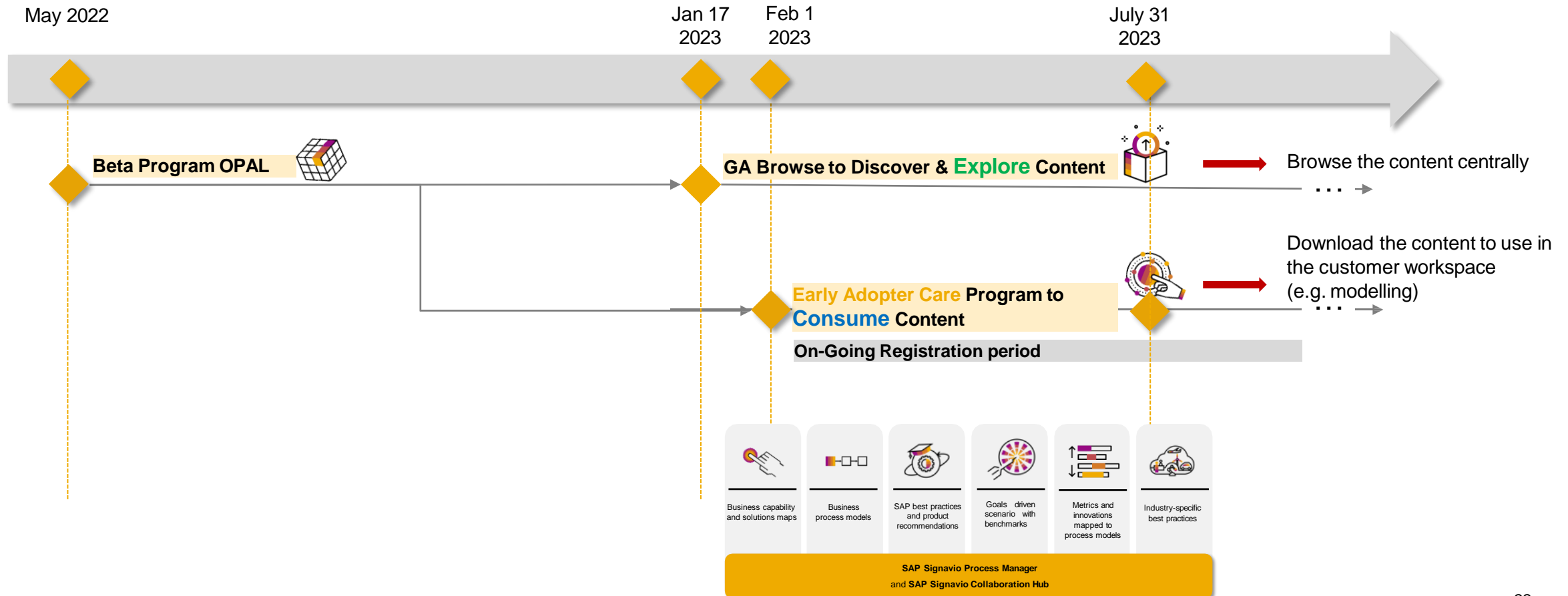
- Customer Expectations & Needs  
Enterprise Architecture as a Service
- Enterprise Architecture Framework (EAF)  
Framework & Core Elements
- One Process Acceleration Layer (OPAL)  
SAP Signavio Process Explorer
- **Early Adopter Care Program**  
**What is coming up? Customer Nominations & Support**
- How to stay informed?  
General information, contacts & resources
- Q&A



# SAP Signavio Process Explorer GA from 2023

## Early Adopter Care Program BACKGROUND

Sapphire 2022



# Adopt

## Early Adopter Care Program **SAP Signavio Process Explorer - Value Accelerator Consumption**

Early Adopter Care\* enables customers to get support with your import of the SAP Signavio Value Accelerator content into their own SAP Signavio Workspace via an Early Adoption Care program in close collaboration with SAP with a dedicated back-office support infrastructure in place to safeguard your project and minimize risks.

### How to get engaged with us?

- ❑ Visit <https://influence.sap.com/sap/ino/-/campaign/3332> and register your company for this opportunity - Please keep in mind that it might take a few days until the customers get the confirmation/feedback for their participation to the program and 1-3 weeks until we are able to kick off the content import with them (depending on our coaches availability)

### Prerequisites:

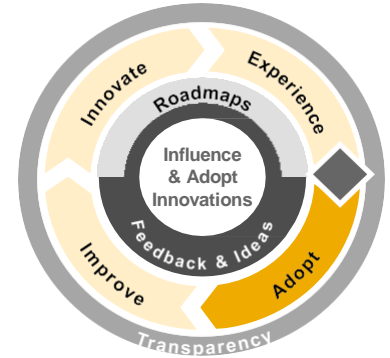
Participation in the Early Adopter Care program is voluntary, at the sole discretion of SAP, and dependent on the following prerequisites:

- ❑ SAP Signavio Valid Licenses
- ❑ The region of the customer
- ❑ Signed feedback agreement and willingness to become a reference (includes social media activities)
- ❑ If Selected - >Immediate desire to start a productive content consumption

### Key Dates

- ❑ **Our Early Adopter Care Program is open and running from February 1st 2023, to July 31st, 2023**

For more information on the program and its limitations, take a look at the 2 slides [click here](#)



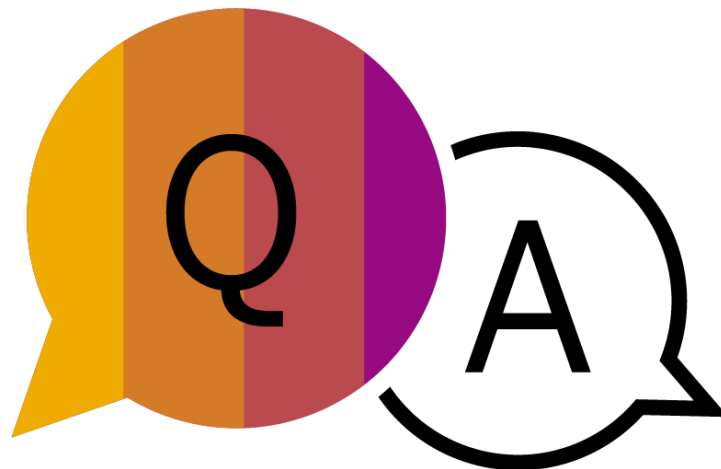
\* These services complement SAP support services, and are available to all customers with a valid SAP license and maintenance contract. Please note that not all services are available for all SAP products.



# Agenda

- Customer Expectations & Needs  
Enterprise Architecture as a Service
- Enterprise Architecture Framework (EAF)  
Framework & Core Elements
- One Process Acceleration Layer (OPAL)  
SAP Signavio Process Explorer
- Early Adopter Care Program  
What is coming up? Customer Nominations & Support
- **How to stay informed?**  
**General information, contacts & resources**
- **Q&A**





# Your questions Our answers

## Find more information

**SAP Signavio Process Explorer:**

<https://www.signavio.com/products/process-explorer/>

**Value Accelerators:**

<https://www.signavio.com/value-accelerators/>

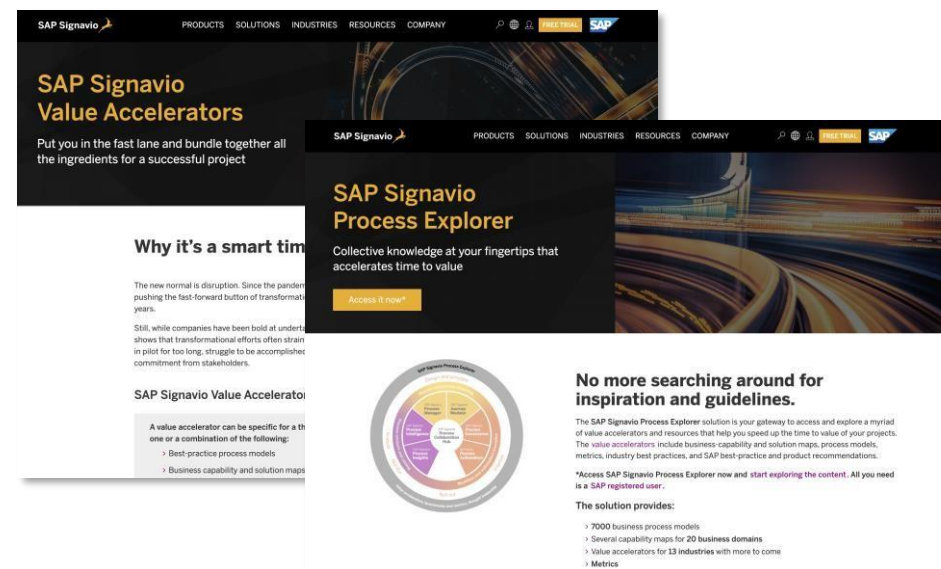
**One Process Acceleration Layer:**

<https://www.signavio.com/one-process-acceleration-layer/>

**SAP Signavio**

**Process Explorer FAQ:**

[SAP Signavio Process Explorer FAQ - External Document](#)

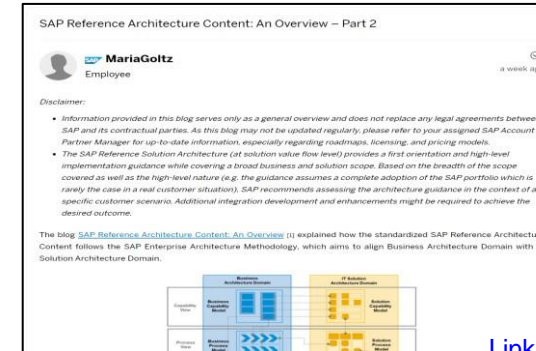
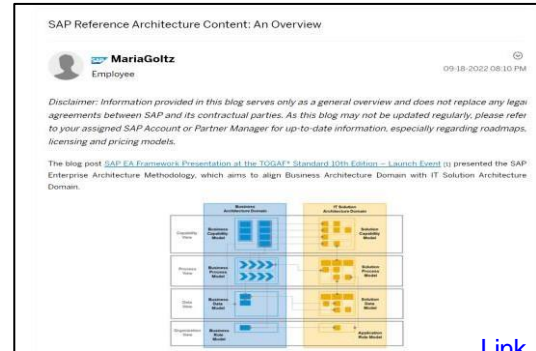


### Customer Feedback on SAP Signavio Process Explorer & Early Adopter Care Program

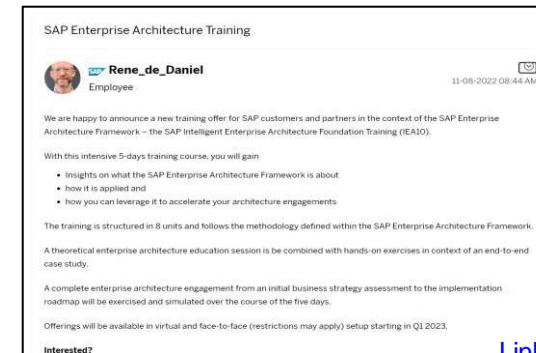
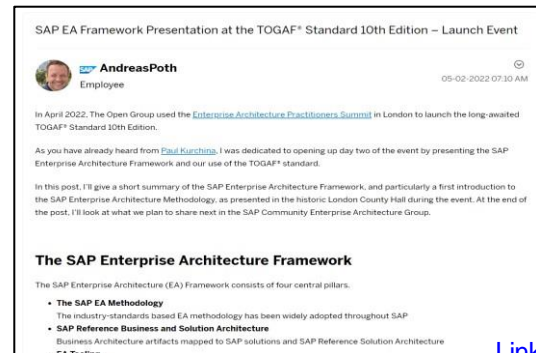
We are also interested in collecting **customer feedback** regarding the SAP Signavio Process Explorer. So, when you receive some feedback, please write to this [mailbox here](#) to share it with us so that it will be directed directly to our product team.

# Blogs & Communications

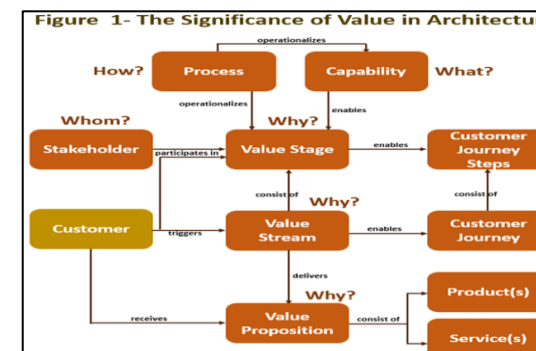
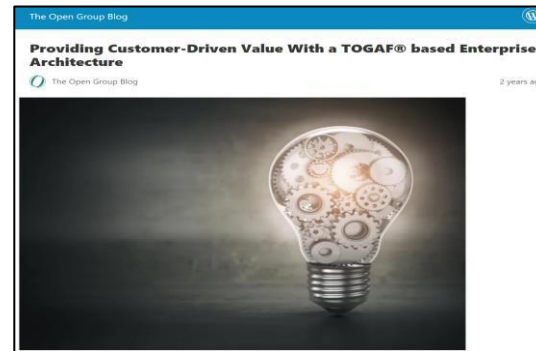
## Reference Architecture Team



## SAP Methodology & Enablement



## Globally Recognized Organization – TOGAF



[BLOG: PROVIDING CUSTOMER-DRIVEN VALUE WITH A TOGAF® BASED ENTERPRISE ARCHITECTURE](#)



# Thank **you.**