

WHILTON NEWSLETTER

APRIL & MAY 2009



ROUGHMOOR SPINNEY

Does anyone remember this picture?

It was taken in April 2003 when we had the official opening of the Spinney and we were awaiting the ribbon to be cut so that we could then start our Easter Egg Hunt.

Although we have owned the spinney since 1998, we had to wait for ???? dangerous Black Italian Poplars to be felled for it to be truly safe for everyone. We also had the Foot & Mouth to deal with which delayed the felling. A lot of tidying up had to be done after the trees were down

See inside for details of our ten year celebration at the beginning of May

HAPPY EASTER

In this issue

- * Parish News
- * Church News
- * Whilton Gardeners' Assoc.
- * Whilton Photographic Club
- * Whilton Local History Society.
- * Police Surgery Dates
- * Neighbourhood Watch
- * Whilton Village Hall
- * Future Events

Whilton Social Lunch

This year we arranged a Social Lunch to coincide with Shrove Tuesday (24th February) and the annual Fair Trade promotion.

We used as many Fair Trade ingredients as were available for the very tasty meal which of course included pancakes in the main course.



We were offered three tasty courses with a choice of pudding ending with tea/coffee and chocolates (Fair Trade of course)

As usual it was well attended and everyone enjoyed the meal (all clean plates) and the social get-together.

The next one is being planned for June - see next Newsletter.



ROUGHMOOR SPINNEY CELEBRATION



The ownership of the Spinney was legally transferred to the Residents of Whilton Parish in October 1998 and it was agreed by the Management Committee that the 10th anniversary of ownership should be marked as a special occasion.

As it was appropriate for the event to involve the actual spinney for the celebration, a suitable time was suggested for mid-spring when the wild flowers, trees and shrubs are at their best.

It has been decided that members of the parish who are interested, meet on Saturday 2nd May 2009 at 8.30 am in the spinney for a conducted tour and then back to the village hall for breakfast.

Residents of the parish who for one reason or another are unable to take part in the spinney walk are welcome to the breakfast.

As it is necessary for catering purposes to establish the number for breakfast, will you please complete the form below and return by 18th April.

.....

I/We would like to come to the Spinney and Breakfast / Breakfast only
(Delete as necessary)

NAME(S).....

ADDRESS.....

TEL NO.....

Return by 18th April to Shirley & Derek Brown, Cherry Orton, 842968 or

Anthea Hiscock, Langton House. 843319

PARISH MATTERS MARCH 2009: REPORT FROM THE CLERK

There have been two Parish Council meetings in March.

Finance

Parish Council expenses this month have included electricity, the clerk's salary and expenses, printing the Newsletter, entry fees for the Village of the Year competition and the replacement of the village clock winding unit for striking, for which a grant has covered the whole cost. The familiar sound of the clock striking has returned.

Planning

Several matters have been considered this month.

- The planning appeal for an agricultural type building at Felines was upheld at the end of last year, and the DDC is attempting to find if there are any plans for the future of Rose Cottage, which has been empty for years.
- The District Council has given permission for a conservatory to be built at Lodge Cottage, Whilton Locks (DA/2008/1218).
- An application to replace the existing telecommunications mast at Norton Fields Farm, Watling Street, Norton, (DA/2009/0133) was considered, and no comment made. The mast is to be on the site of the existing one; it will be slimline, but taller.
- Mike Lewis continues to report on the progress of the appeal concerning the proposals for the growth of Daventry, but this is now unlikely to be completed until well into the summer.
- On 16th March Jeff Paybody, the agent for John Townley Junior, attended a meeting, where he was able to introduce proposals to apply for planning permission for a farmhouse and an agricultural building on the site in Brington Lane, where his agricultural buildings already stand. He was able to answer questions from those present, and expects that the application will be registered in the next few months
- Information has been received from the DDC Enforcement Officer about the changed gateway at the end of Brington Lane. At present he does not consider it appropriate to take action in respect of the access alone, but requests that the Parish Council inform him if any unauthorised activities should take place.

Police Community Support Surgeries

On 2nd March PCSO Lorraine Humfress held a surgery before the Parish Council meeting and met the Parish Councillors. Her next surgery will be on **Saturday 25th April** from 9.30 to 10.30 a.m. in the Village Hall, and she will be here again from 12.15 to 1.15 p.m. on **Friday 15th May**. This is an opportunity for any parishioner to come and have a talk with Lorraine about any concerns.



Keeping Whilton tidy and attractive

At the time of writing various works are about to take place to erect two seats, remove the dangerous allotment steps, and provide a litter bin at the Locks. It is hoped this street furniture will enhance facilities in the parish.

The Annual Litter Pick will take place on Thursday, 2nd April. We shall meet at 2 p.m. on the Green, where tabards and equipment will be available. No previous experience is necessary!

Roads and transport

During the winter, work was carried out near the railway bridge at Whilton Locks, where there had been a water problem for some time. The cracked pipe there has now been dealt with. In common with other villages, our salt supplies ran low during the very harsh weather, but were re-ordered immediately. Other problems on the roads continue to be reported and acted on as they occur. At the time of writing this includes the leak trickling out of Wadd Close Lane. The agreed traffic survey has been held up because of vandalism and stealing of the equipment, but it is hoped this will be able to take place soon. Meanwhile the end of Manor Lane has been adopted by the County Council and some people may notice less motorway noise, as part of the local M1 is being resurfaced with low noise asphalt.

The Parish Councillors will be carrying out their spring Parish Walk on Saturday, 18th April, when they may have further details to note.

Village competitions

Whilton has entered the Village of the Year competition, and we trust that everyone will help to raise our marks.

The criteria for East Midlands in Bloom have changed this year. Jonathan Hanslip offered to discuss this with the Gardeners Association. If a decision is made to enter, the Parish Council agreed to pay the entry fee.

Liaison with the DDC and the NCC.

District Councillor Wendy Amos reported that the drop in interest rates will have a huge impact on District Council services.

County Councillor Steve Osborne reported that there will be no cuts in County Council services this year. He expects extra money to be available for potholes. He reminded the meeting that there will be a County Council election in June.

The next regular meeting of the Parish Council will be the Annual Meeting at 7.30 p.m. on Monday 11th May. All are welcome to attend this meeting.

THE ANNUAL PARISH MEETING

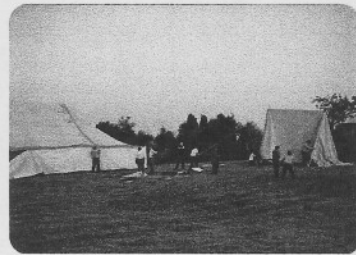
This is not a Parish Council meeting, but a meeting for all the people of Whilton. This will take place at 7.30 p.m. on Monday 27th April in the Village Hall. All the organizations and clubs of the parish are invited to come and give a report of their activities.

Whilton Local History Society

The March meeting was based on fetes and festivals in Whilton over the last century. Old photos and written memories recalled people and events, including pre-war Christmas parties for children at Whilton Lodge, hosted by Colonel Shaw with his salt and pepper plus-four suit and his cherry red countenance, the crowning of the May Queen on the Green and summer fetes in Wadd Close.



Howard Tooley with his shire horse and cart at a Whilton fete in the 1980s



A community effort to raise the marquees at the 1983 fete

We heard how Empire Day activities on 24th May 1937 suffered from bad weather: *“Part of the afternoon was to be devoted to Games in the field, where we are allowed to play through the kindness of one of the Managers, Mr Emery, but owing to the dampness of the grass they had to take place in the playground.”* At the 1953 coronation, *“the children were presented with the County Souvenir, Richard Dimpleby’s book, “Elizabeth our Queen”, and each child was given a ½ lb Coronation box of chocolates by the Head Mistress.”* There are still clear memories of this.

We heard Tony Allen’s memories of bidding for apples with Marcus Swinford at a harvest auction in the 1960s, only to find they were cookers!

We relished Stan Haynes’ account of Christmas Eve here in the 1930s: *“In the church new candles were in place, the stove was going well, and the polished copper lamps shone on the holly which decorated the lectern and pulpit... The boy in the corner pumped the organ, Parson Brown announced the hymn, Betty Pride played the opening chord, and the church rang to the sound of “O come all ye faithful.”*

Our evening finished with a photo of Whilton bell ringers ringing in the Millennium on 1st January 2000.



The font decorated for Harvest Festival sometime in the twentieth century.

The next meeting of the Local History Society will be in St Andrew’s Church. We shall meet at 7.30 p.m. on Thursday 21st May for “Monuments and memories in Whilton Church.” All will be welcome to join us there.

Anthea Hiscock

WHILTON LITTER PICK



**All are welcome to come and help
keep Whilton tidy
Litter pickers will meet on the Green
at 2 p.m. on Thursday, 2nd April**

**Tabards and equipment
will be provided.**

NEIGHBOURHOOD WATCH

police

As part of their policy to minimise the risk of burglaries being caused by Yellow Pages/ Telephone Directories being left on doorsteps, the company involved in these deliveries has asked us to advise you that:

Yellow Pages directories will be delivered to the following postcode areas over a period of 2-3 weeks, starting on April 4th. NN1 to NN7 inclusive, plus NN11 and NN12.

They will be instructing their delivery agents not to leave directories anywhere visible from the street. However this is not always possible and some books will perhaps have to be left on view outside.

If you are out at work all day, it might be worth asking a friend or neighbour to take your book in for you.

Now that 'British Summer Time' has officially begun and hopefully more time will be spent in the garden, either working or relaxing, please ensure that your house is made secure by not making it easy for potential burglars.

Also bear in mind cars on the drive are just as vulnerable therefore please ensure that maximum security is maintained at all times.

Deputy Coordinator – Derek Brown

ANY SUSPICIOUS OR ANTI-SOCIAL BEHAVIOUR CAN BE REPORTED ON THE NEIGHBOURHOOD WATCH DEDICATED PHONE NO. 01604 432436 OR THE NORTHAMPTONSHIRE POLICE CAN ALSO BE CONTACTED ON 08453 700700

WHILTON VILLAGE HALL 200 CLUB

As previously notified the renewal year has been altered to commence as from 1st April and our dedicated volunteer collectors will soon be calling on you.

It is hoped that we shall be able to maintain the existing membership and to increase upon this number will be very helpful.

All are invited to

TUESDAY CHAT



in the Village Hall from 2.30 – 4p.m.
on Tuesday 28th April 2009
and on Tuesday 19th May 2009

All are welcome for a cup of tea and a chat.
Please bring £1.50 to cover expenses.

VACANCY

WHILTON VILLAGE HALL MANAGEMENT COMMITTEE

We have now been without a secretary for about three years.

The position is not particularly onerous; we meet maximum four times a year and have a separate Booking Secretary .

If you are interested and would like to have full details of the vacancy, please contact **Mike Lewis, Chairman** on **01327 842404**

Brington Primary School

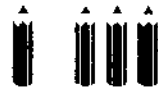
**has a new COMMUNITY website with dedicated areas
for all local groups**

Village newsletters now available online

Visit us now at

**[https://northants.lppplus.net/
primary/bringtonprimary](https://northants.lppplus.net/primary/bringtonprimary)**

Brington & Whilton Pre-school



The Pre-school presently has 15 children on the register. The children come from Whilton and the surrounding villages and enjoy socialising and learning together.

We presently are looking at 'On the Farm' and have talked about all the animals you would find on the farm, visiting Gordon and Mary Emery at the farm to see the lambs and watch some lambs being born.

Parents on the Management Committee continue to play a large part in the running of the group and have been busy arranging the Easter Egg hunt to take place in Great Brington Church over Easter. The other fundraisers planned are a Quiz Night on Saturday 9th May 2009 (for further information see Village Notice Boards) and a Sponsored Bike Ride. Please support the quiz if you are able, the monies raised will go to new equipment and it should be a good night out.

We are also collecting Sainsbury's Vouchers, these help us to gain extra

equipment and last year managed to purchase lots of new PE equipment, hoops, balls and parachute games. If you shop at Sainsbury's please collect these for us and give them to someone in the village who attends Pre-school or drop them in at the Village Hall.

If there is anyone in the village who has pre-school children aged, 2 years 6 months up to school age, we meet Monday, Wednesday and Friday mornings at Whilton Village Hall. The group is small, trained staff offer a friendly, caring environment where the children can learn through play, learn to socialise with other children of their own age and have fun learning about the world around them.

We still have places left for September and if you would like more information or would like to visit please do not hesitate to contact me, Jenny Holman on 01604 770083, we would be happy to show you around.

Jenny Holman
Early Years Manager

ST ANDREWS CHURCH

APRIL 2009

5TH	10.00 AM	BENEFICE SUNG EUCHARIST AT <u>NORTON</u>
<u>HOLY WEEK</u>		
7TH	7.30 PM	HOLY COMMUNION
10TH	7.30 PM	COMPLINE FOR GOOD FRIDAY
12TH	9.15 AM	FAMILY COMMUNION FOR EASTER DAY
19TH	9.15 AM	HOLY COMMUNION
26TH	11.00 AM	FAMILY SERVICE
3RD MAY	10.00 AM	BENEFICE SUNG EUCHARIST AT <u>HARLESTONE</u>

CHURCH NEWS

We remain in an Interregnum but the pattern of services has been unchanged. We are grateful for this as the Revd. David MacPherson and Revd. Clive Hutchings have given us their support.

During the past month we have welcomed the Archdeacon and on 19th April 2009 Bishop Frank will be officiating at the 9.15am Holy Communion Service.

The Annual Parochial Church Meeting will take place in the village hall on Wednesday 8th April at 7.30pm, do come along and support your church.

*Janet Bowers
Churchwarden,*

NORTHAMPTON COUNTY MOBILE LIBRARY SERVICE

VISITS WHILTON EVERY THIRD TUESDAY AND STOPS OUTSIDE THE OLD PLOUGH, MAIN STREET AT 9.15 AM UNTIL 9.30 AM.

THE DATE FOR APRIL IS 14TH AND MAY DATES ARE 5TH & 26TH

WHILTON VILLAGE HALL

The Annual General Meeting of the Village Hall Management Committee was held on 25th February 2009 and it was extremely disappointing to have no members of the public there. The village hall is a great asset to the village but it would seem that no members of the village are very interested in becoming involved in the running of the village hall.

All committee members were in attendance with one exception and in the absence of any new nominations; officers elected for 2009 followed the same pattern as for several previous years namely:-

**Chairman/Secretary – Mike Lewis,
Deputy Chairman – Maurice
Clements, Treasurer – Derek Brown,
other committee members – Shirley
Brown, Janet Bowers, Jenny Holman
and Jonathan Hanslip.**

Philip Waights who had served on the Management Committee for a number of years (some of them as Chairman) and had made a great contribution to the running of the hall, indicated he would like to resign. This was accepted with great regret and Phil was duly thanked for his past service.



WHILTON GARDENERS' ASSOCIATION



How good is it to see the arrival of spring flowers in our gardens and throughout the village. Perhaps it will encourage us all to try and regain the "Cup" (4th year) in the Village in Bloom Competition

On the 4th February it was good to see so many members braving the elements to attend an excellent talk by Christine Dakin on Winter Gardening. Her knowledge and manner in which she spoke and answered our questions was received with warm enthusiasm. As always a good selection of plants were on sale.

Tips for Early Summer

Lawns;

Mow once a week, spike badly drained areas

Bulbs;

Lift and heal daffodils, narcissi into spare ground or divided when the leaves start to yellow

House Plants;

Don't forget to water more freely give liquid feed to older plants

Date of next meeting; 1st April;

Visit to Mr Bert Manton at Woodford Halse, CRAFT

WORKSHOP

Meet 7.00 pm Village Green, transport available (Non Members welcome £3.00 p.p.)

Details on Village Notice Board

3 June; Talk and Slide show on ENGLISH LANDSCAPES and GARDENS by Mr Neil Phillips

(P.S) Did anyone take up the Allotment Challenge, If not why not?
New Members welcome to join us

Olive (general dogsbody)



USED STAMPS



Many thanks to all who contributed to the box of stamps sent to the RSPB. In future stamps will be given to Daventry Rotary Club whose members support local charities

If left for Trudy, please leave on the windowsill by the back door of the Old Plough

Please carry on saving

Teresa & Trudy

Whilton Photographic Club



Upcoming Meetings

Our next meeting will be on 23rd April, St George's Day. To commemorate this national day the club will be going to The Boat at Stoke Bruerne to photograph a typically English institution! If you want to join us and learn how to use your camera, please contact Neil Phillips (details below).

The dates for the meetings for the remainder of 2009 are:

12th May

9th June

14th July

11th August

8th September

13th October

10th November

8th December

All meetings will start at 8pm and be in the Village Hall.

Models Wanted

We are still looking for people (you, your family, your friends, etc.) to come and be models so that the club members can practice taking photographs. Come and experience a one hour studio session with us and we will let you have copies of some of the images we take **FREE** of charge – **yes that's high quality studio photographs for FREE**. Just call Neil Phillips for more details.

And Finally

If you received a new camera for Christmas and are wondering what all those buttons do, or if you want to know how to get better photos, why not join the Whilton Photography Club?

Neil Phillips (Tel: 01327 844182, E-mail: neiljphillips@hotmail.com)

SUMMARY OF EVENTS

Wed	1st	Apr	7.00 pm	WGA – village green – Visit to Woodford Halse - Craft
Thurs	2nd	Apr	2.00pm	Litter Pick from the Green
Sun	12th	Apr	9.15 am	Easter Day Family Communion in St Andrew's Church
Tues	14th	Apr	9.15 am	Library Van in village outside The Old Plough
Thurs	23rd	Apr		WPC Outing to Stoke Bruerne for St George's Day photographs
Sat	25th	Apr	9.30 – 10.30 am	Policy Surgery in village hall
Mon	27th	Apr	7.30 pm	Annual Parish Meeting in village hall.
Sat	2nd	May	8..30 am	Spinney Celebration
Tues	28th	Apr	2.30 pm	Tuesday Chat in village hall
Tues	5th	May	9.15 am	Library van in village outside The Old Plough
Sat	9th	May		Brington & Whilton Pre-school Quiz night
Mon	11th	May	7.30 pm	Annual Meeting of Whilton Parish Council in village hall.
Tues	12th	May	8.00 pm	Photographic Club in village hall
Fri	15th	May	12.15 – 1.15 pm	Police surgery in village hall
Thurs	21st	May	7.30 pm	Local History Society in St Andrew's Church
Fri	22nd	May		DEADLINE FOR JUNE/JULY NEWSLETTER Please hand in your contribution before this date or otherwise we cannot guarantee it will be included in the next edition.
Tues	26th	May	9.15 am	Library Van in village outside The Old Plough

**The Whilton Newsletter is published bi-monthly and
circulated free to every household within the Parish boundary.
The costs are met by the Parish Council. The Editors are:**

Derek & Shirley Brown - Cherry Orton, Main Street. - 01327 842968

Email: - d.brown253@btinternet.com

Please supply a disk or memory card with your contribution if not emailed so that we can manipulate the text to fit if necessary. If you do not have a PC or typewriter the editors will type the articles as we have always done in the past.

Articles of local interest, poems, recipes, puzzles or drawings will always be considered for inclusion in the Newsletter.