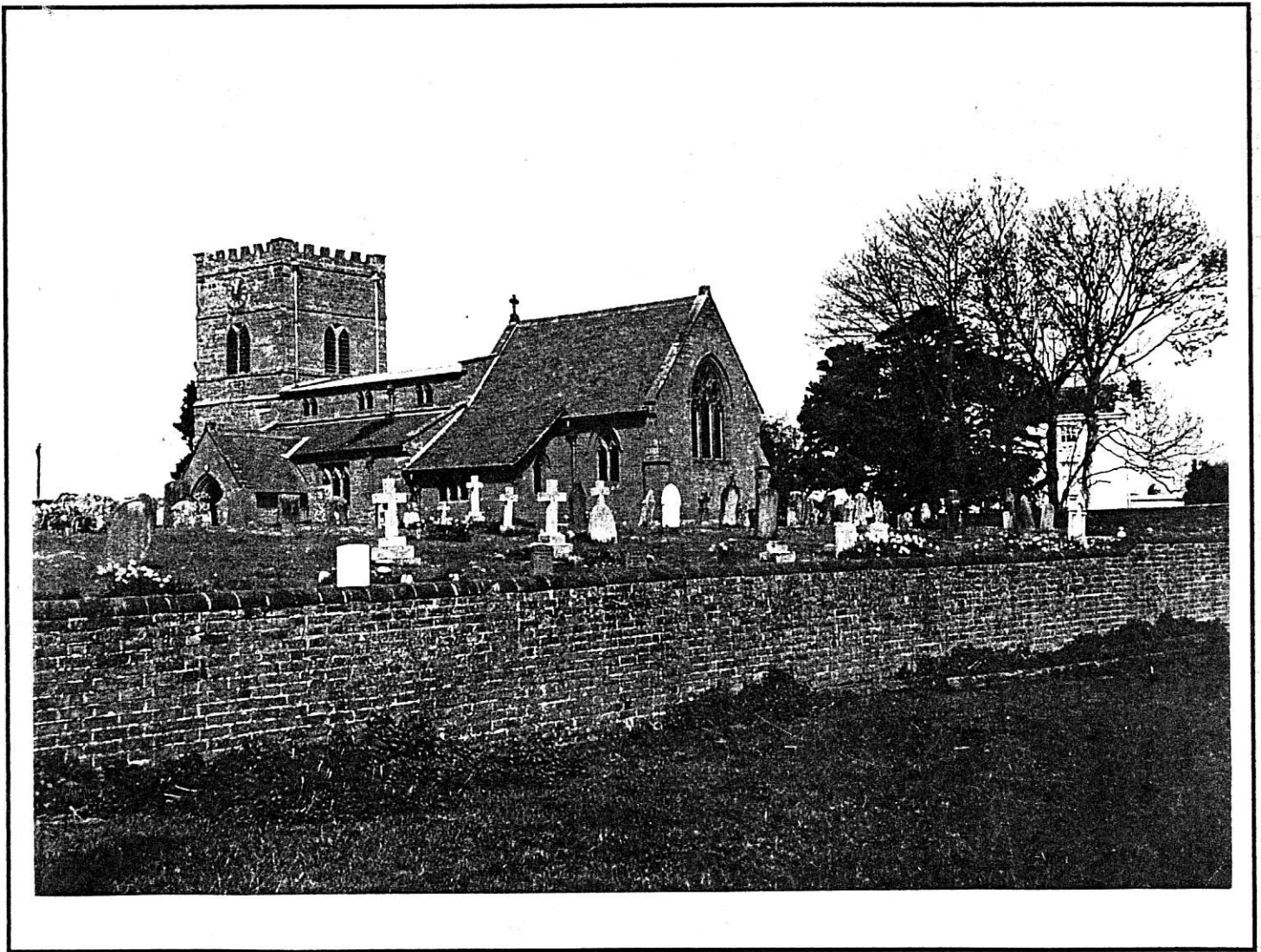


Whilton Newsletter

August 1999



VILLAGE OF THE YEAR AND BEST KEPT CHURCHYARD COMPETITION 1999

We are now halfway through the judging period and whilst no doubt we have already received at least one visit by the judge, we must continue to keep up the good work as there will be at least another unannounced visit.

Since litter, the odd piece possibly thrown from cars passing through the village, has been our downfall in past years perhaps everyone could pay particular attention to this aspect which attracts a fairly large percentage of the overall marks awarded.

Derek Brown
Parish Councillor



THE WHILTON SPINNEY PROJECT



The Management Group has been successful in obtaining a grant from Daventry District Council Millennium Fund. This grant is for our pond project and the amount to be paid by Daventry District Council will be 50% of the total cost of the work.

Recently two of our members have been carrying out a survey of the flora in the spinney in six designated areas. So far nearly 40 different species of plantlife have been identified and regular visits are made to the spinney for the purpose of observing new developments.

If you have not recently visited the spinney, you will be pleasantly surprised to find easy access from the road to the footpath via a gate and a very substantial bridge across the stream and into the wood. We are indebted to Northants County Council Rights of Way Office who have gone beyond their normal standard to meet our additional needs for easy access to the footpath and the spinney by all.

The Management Group will shortly be meeting to formulate long-term plans for the spinney and these will be published so all residents of the parish will have the opportunity of putting forward their comments.

Just a reminder that the working party days are normally the second Saturday in the month (10.00m - 12.30 pm) and the second Sunday (2.00 pm - 4.30 pm). Do please come along and help if you can.

On a recent visit to the spinney, it was noticed that the areas designated for observation of plantlife had been tampered with and we would ask those responsible to please consider the people who are giving their time voluntarily to provide such useful information.

Also on the occasion of that visit, we found a very effective dam constructed of wood and bricks in the stream to the right of the footpath that runs through the spinney. This had effectively stopped the flow of water which could cause problems further up and down stream. The flow of water must not be interfered with in any way whatsoever.

Please remember the generous gift of the spinney is for the residents of the Parish and to be enjoyed by all.

Derek Brown

PARISH MATTERS!

The Parish Council had another late meeting on your behalf on the 5th July. Business is great if not always brisk. We started with a discussion led by Adam Lech from Daventry District Council on the introduction of the **Brown Wheelie bins**.

Green Waste Collection

These bins are to be issued here on the 9th August from when we will only have our grey bins emptied fortnightly. In the other week we will fill these brown bins, if we choose to have one, with any waste that once lived. The only exceptions to this are fish and cat litter. This waste will be used to produce compost and if we co-operate fully, as the pilot areas have done, then our recycling will rise from 25% to 48%. If we find our normal rubbish overflows on two weekly collection we can ask Adam to send someone out to advise us. It does mean some families with 4 or more people may need the larger bin but we are asked to squash boxes etc to reduce this to a minimum. He also suggested that if we were concerned about dustbins getting mixed up we should mark them on the bottom as well as the side. Any problems with this new collection or the other boxes collection should be phoned through to him on 300001.

Normal Business

A lot of the normal financial and planning business went through smoothly. The Council were happy with the plans for changes at Churchgate and the orders for handling the Althorp summer traffic. They were interested in the DDC intention to organise for every voting ward, including Whilton, a WASP (Ward Action Service Plan - fancy you not guessing that!) by holding a consultation with us in the winter months. This will take the form of officials being available in an afternoon to supply information and answer questions, followed by an early evening forum to discuss what future services we, as a parish, would like to see. More later about this but start thinking.

Our local County and District Councillors who attended the meeting were asked to help us clarify the ownership of the broken fence on Southview, as both Councils disown it and the clerk has so far failed to get an agreement to mend/replace it. Action on the signpost and reflecting bollards at the turn into the top of the village is also taking time to happen, but at least the responsibility of County Highways for these has been accepted. Perseverance has at last got the phone box repainted and the grass cut at the A5 junction. It was a return to two old issues which are not easy to resolve which took the time. A need for a children's playground and dangers from cars going too fast through the village, especially below Southview, where often there is only one car lane open as residents have nowhere else to park their vehicles. **The Council wished me to raise both issues with you in this article to get your response.**

A Children's Playground.

One resident has drawn to the Council's attention that there is again a large number of young children in the village. They are meeting each other and then playing in the main street or by the green. There is no obvious off street safe play area if individual gardens are not used. He wondered whether a public playground could be created. The Council has explored this in the past when an unused allotment was being considered. At that time the fencing seemed a prohibitive cost, the liability insurance was considerable and there were some fears of vandalism.

The time might be right to explore the issue again, but this could only be done if there were people prepared to form an active steering group to raise the funds and then manage the play area in the way the Village Hall and Spinney project are. Grants could well be available and the Council would help but it only has £3,000 reserve for all its liabilities. The Council wish to know if there are people prepared to actively support such a venture. If you are interested please ring me or speak to one of your Councillors.

Speeding Traffic

This subject is connected to the above. It is good to see friendships developing in the village amongst the young people but there is concern that cars may cause injury to them or older people, especially as both groups have members with impaired hearing. The Council has explored all ways to stop traffic speeding through the village in the last two years including police speed guns, road markings, more signs and village entrance walls to note a change of environment. You can see all these in other villages. However, we are not viewed as a priority by the County Council, so any change would have to be at our expense. None of these methods deals with the problem of speeding cars whose drivers live within the village, who are going too fast for the one open lane left by parked cars but who are not going above 30m.p.h. It seems it is our own behaviour that has to change, if a serious accident is to be avoided from an unguarded moment by either a pedestrian or driver.

The Council invite you to let them or me know if there are other suggestions or support for other action to stop this potential menace. Meanwhile, for everyone's sake, WATCH YOUR SPEED.

Keith Hiscock
Clerk to the Parish Council

Bellringing Visitors at Whilton

One of the great pleasures of bellringing is the opportunity to join in the outings which are organised from time to time which enable ringers to ring on bells other than those in their own tower. These outings are partly social occasions enabling ringers to get to know one another better, and to visit churches in towns and villages, often in beautiful surroundings and in unfamiliar parts of the country. Such visits, which involve ringing a range of bells perhaps much heavier or lighter than those normally rung, also constitute a learning experience for each ringer, improving ringing skill and building confidence. Ringers generally are well-known for the warm welcome they extend to individual or parties of visiting ringers.

Already this year St Andrew's Church has been visited by a number of bands, but July looks like being the vintage month with several notable groups of ringers enjoying these fine bells. On July 3rd a band of ringers mostly from the London area which included Shirley McGill, whose father Stan Ruddlesden lives in Long Buckby and often rings at Whilton, rang a fine peal of Bristol Surprise Major, and on July 17th, the ringers from St Mary Abbots Guild (another London band) rang here. St Mary Abbots is a large church in Kensington, and the Guild based there also rings for the regular services at St Vedast, Foster Lane, St Luke, Chelsea, and St Stephen, Westminster.

The following Saturday, July 24th we were especially pleased to welcome a group of bellringers from the United States – this must surely be the longest journey any band has made to ring here. Bruce Butler of Philadelphia organised the visit and the group spent time in Leicester and Cambridge before coming to stay at Badby and spending several days ringing at towers in Northamptonshire.

We hope that all our visitors enjoyed our village, our church and our bells.

Bryan Williams

WHILTON VILLAGE HALL

BARN DANCE - SATURDAY 10TH JULY 1999

The weather was fine although as the evening progressed a cool wind developed and eventually everyone moved into the relative warmth of the barn. The event was enjoyed by all and whilst the number of adults attending was slightly up on last year, the number of children dropped from 39 to 23. The ticket price was held as for 1998 but this resulted in a lower profit and also the amount raised by the raffle was down so our net profit was £67.04 as compared with £287.34 in 1998. The bar was run by Tom Treacy as a separate entity.

Details as follows:-

Sale of tickets (60 adults and 23 children)		£357.50
Expenses - Band	£210.00	
Food etc.	<u>£127.96</u>	<u>£337.96</u>
		19.54
Raffle - all prizes donated		<u>47.50</u>
Profit		<u>£67.04</u>

We thank Mary and Andy Kane for donating the fuel for the barbeque. We also thank the people involved in the production of food and drink and the setting up and dismantling after the event.

We extend our thanks to Joan & Griff Davies for providing the excellent venue.

Congratulations to the Winners of the 200 Club

MAY 1999

1st Prize	175	P Webster	£40
2nd Prize	022	L Morris	£20
3rd Prize	081	H Haynes	£10

JUNE 1999

1st Prize	058	J Messinger	£40
2nd Prize	191	G Haynes	£20
3rd Prize	039	C Phillips	£10

JULY 1999

1st Prize	134	C Messinger	£40
2nd Prize	011	J Patching	£20
3rd Prize	025	N Swinford	£10

Village Hall Committee



WHILTON FLOWER AND GARDEN FESTIVAL



Despite the wet afternoon, the Festival made a profit of **£741-06** for the Church Fabric Fund (designated). Although damp and miserable outside, the inside of the church glowed with the colour and scents of the flower arrangements.

On behalf of Whilton Parochial Church Council, I would like to thank those who opened their gardens, organised and manned stalls and arranged flowers on a difficult theme "A walk through history" and everyone who helped or supported the event to make it so successful under somewhat difficult circumstances.

The day ended with a lovely Songs of Praise Service. We sang a variety of hymns chosen by individual members of the congregation.

Janet Bowers

COPPER MILE UPDATE

Well what a magnificent start to the copper mile. Despite a rather damp afternoon the response to the launch of the copper mile was excellent. An amount of £79-07p was donated on the afternoon of the flower festival which gets the mile off to a flying start. Sincere thanks go to the enthusiastic volunteers who laid out the coins along the church path on the day ensuring the project got a high profile start. Don't forget that this is an ongoing fund raiser so keep saving those coppers. They can be handed in at any time to;

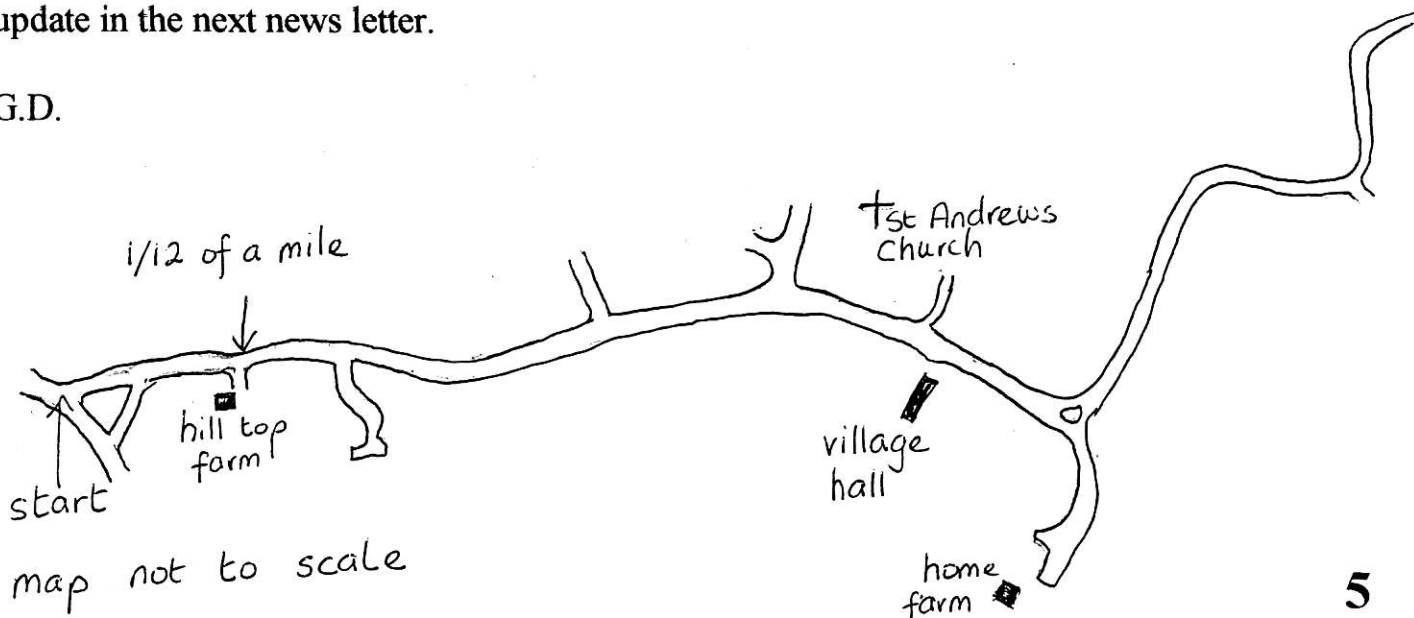
Janet Bowers The Heritage Brington Lane Whilton (842851)

Gill Denbigh Russet House Manor Lane Whilton (842686)

If you have managed to save too many to carry then let us know and they can be collected!!!

Many thanks to all who have helped and donated so far, there will be a progress update in the next news letter.

G.D.



Whilton Women's Institute

For our June meeting members of the W.I., with some of their families, met at Pitsford reservoir, where we were taken on a guided walk by the warden and his wife. We were able to see much of the nature reserve there on an idyllic summer evening which was enjoyed by all.

In September we shall be having another evening outing. This will be on Wednesday 8 September. We shall be visiting the vineyard at Hellidon. If you are interested in finding out more, please contact me (843319) or any other W.I. member.

Anthea Hiscock
Secretary

50th Anniversary Celebrations

On Saturday, 17th July, 29 members and former members gathered to celebrate the success of the W.I. during its 50 years in Whilton.

What exactly were they celebrating and what had they enjoyed and gained from the W.I.?

It was obvious from the happiness of the occasion that what they had enjoyed most and looked back on was the friendships they had made. Everyone who came could immediately greet old friends without any awkwardness or formality. This applied to members whose ages ranged from the thirties to the seventies, who found colleagues they had known and worked happily with. They came from all over the country and beyond. **One founder member thought it worthwhile to come from Spain!** Sixteen members could not attend but sent apologies or cards. Apart from the obvious pleasure they found what else was to be seen?

To begin with there was a fascinating collection of memorabilia. Old photographs, programmes, poems, drawings and paintings and extracts from early minutes, reminding people of the time when coal had to be brought to light a fire and of social events with members now dead but suddenly remembered.

Another exhibition reminded us of the importance of the W.I. as a national pressure group. There were letters to MPs over the years on subjects of education, health, the environment, rural matters, children and crime. This may be a small village but its concerns may help to influence government decisions.

Everyone knows, however, that the W.I. is peculiarly renowned for its food, its quality and standard. On Saturday it excelled itself! The variety of the dishes, their appearance and their taste were enjoyed by all, without exception.

The day began at 12 noon, when guests arrived for coffee and a welcome.

Raffle tickets were on sale and the main raffle prize was a most attractive, decorated glass vase, inscribed "Whilton W.I. 50 1949-1999". This was won by Angela Hall. A beautiful pot plant was won by Frances Drake and a lovely basket of fruit by Agnes Townley. A framed collage was won by Christine Farmer, the County Representative. The raffle raised £43 and a separate donation was given by a past member.

At one o'clock members sat down to their delicious lunch. At about three o'clock, rather replete, they went to walk around the village and refresh their memories of the church, the houses they had lived in and to be amazed at the changes!

At four o'clock a magnificent iced cake, baked by Janet Bowers, was cut by three of the original founder members: Kathleen Wright, Gladys Smith and Freda Ogston. Champagne was provided by Gladys Smith, who was the member who had come from Spain, and a toast was drunk "To the W.I. and its next 50 years".

The President, Ros Gardner, thanked present members who had helped in every way, and she herself was given a resounding vote of thanks by Diana Scott for her own personal efforts at every level, which contributed so much to the success of the event.

When members left, (which some seemed reluctant to do) they were given a key ring containing a photograph of part of the village.

So ended a day which could not have provided more pleasure to those who attended and which will be remembered for a long time.

Frances Drake



Available for rent from the Parish Council

One half allotment.

Rent :
£6 per year

If you are interested, please contact Keith Hiscock,
Clerk to the Parish Council, as soon as possible.
Telephone 843319

BRINGTON & WHILTON PRE-SCHOOL

This half term has passed very quickly for Pre-school. We welcomed a new member of staff, Sue Lye, who has recently moved to Whilton with her family and who was recruited through these very pages!!

Our summer outing this year was a visit to Farmworld. On a hot and sunny day a convoy of cars headed towards Leicester loaded with picnics, sun block and children. Everyone enjoyed a very happy day out.

Friday, 16th July dawned as another hot and sunny day for our sponsored bike ride at Brington C.P. School. We had a successful turnout with very eager participants completing many more laps of the playground than the proposed 10. Grateful thanks to all our sponsors.

The Group has thoroughly enjoyed Friday morning sessions this half term held at Brington C.P. School. The children are given the opportunity to integrate with Reception and Year 1 classes for a real taste of school life, participating in some classroom activities and playtime in the playground. As a result, our Pre-school leavers cannot wait to start school in September.!

The autumn term commences on **Monday, 6th September at 9.30 am**. We do have a few places available for all three sessions, Monday, Wednesday and Friday 9.30am - 12.00 noon.

For further information, please phone me on **01327 843543**.

Wishing everyone a happy and relaxing summer break.

Sara Mitchell

Special Thank You

**We would like to thank everyone for their
Support, Prayers and Good Wishes
after Gareth's accident.**

**We are pleased to let you know Gareth
is progressing well and feel sure you will
soon see him around the village.**

Lindon, Barbara, Philip & Gareth



WHILTON GARDENERS' ASSOCIATION



Our June Meeting saw a change of venue from the Village Hall to Tebbs Nurseries at Crick where we were made most welcome. We held the business meeting in their coffee lounge and the Chairman, Ian Woods, presided over the Meeting. The balance of the accounts is in a healthy position but Dobies seed order account and members discounts have still to be paid. The programme for 2000 is in the process of being arranged but the April Meeting on Alpines has already been confirmed.

The East Midlands in Bloom Judging Day will be **14th July**. Prizes for the best hanging basket, tub or window box will be £10 for the first prize and £5 each for two runners up.

Enquiries are being made into the possibility of a coach outing to Barnsdale, home of the late Geoff Hamilton. Date suggested being 4th September.

After the meeting, we were able to wander round the Garden Centre happily viewing and purchasing from their large range of plants.

The evening finished with refreshments and the news that, in the future (including that evening), members would be given 10% discount on purchases when producing membership cards.

On Monday, 28th June, we had a very enjoyable visit to the nurseries at Alderton where they specialise in Geraniums and Fuchsias. Again we were able to purchase plants and the evening finished with refreshments kindly provided by the owners.

Janet Bowers
Secretary

SERVICES FOR ST ANDREW'S CHURCH WHILTON

AUGUST 1999

8TH	11.00 AM	FAMILY SERVICE
15TH	11.00 AM	SUNG EUCHARIST
22ND	11.00 AM 6.00 PM	FAMILY SERVICE EVENING WORSHIP
29TH	6.00 PM	SUNG EUCHARIST AT <u>NORTON</u>

SEPTEMBER 1999

12TH	11.00 AM 6.00 PM	FAMILY SERVICE CHORAL EVENSONG
19TH	6.00 PM	SUNG EUCHARIST
26TH	9.30 AM	HARVEST FESTIVAL FAMILY SERVICE

IN BRIEF.....

CONGRATULATIONS to Isobel and John Townley on the birth of their baby daughter - Charlotte Emma, born 6th July 1999.



NORTHAMPTONSHIRE HISTORIC CHURCHES TRUST SPONSORED CYCLE RIDE / WALK

As previously announced, this event takes place on Saturday, 11th September 1999. The sponsorship forms have now arrived and are available from myself. - I hope there will be a rush for these forms this year!!!

Derek Brown - 842968
Co-ordinator



WHILTON MILLENNIUM MUGS - An extension of time has been given for ordering your Millennium Mug to 14th August. Do not miss the opportunity to purchase this mug which is being produced by our local and international potter. The deposit required is £3 per mug and the actual cost £5.50. Cheques payable to Whilton Village Hall and your remittance and order form to either Mike Lewis, Whilton Locks (842404) or Derek Brown, Cherry Orton. Whilton (842968)

LATE NEWS:

VILLAGE HALL DOOR The front door of Whilton Village Hall has now been replaced and therefore the existing keys will not fit the new lock. For information about key holders please ring 842968.



EARLY WARNING CASCADE TELEPHONE SYSTEM

Over the past few weeks, all houses in the village have been visited and names and telephone numbers on each Telephone List have been updated where necessary.

In the near future, new lists will be delivered to each home, together with the Neighbourhood Watch Membership Sticker which should be clearly displayed at the front of each house,

The Early Warning Cascade Telephone System has proved to be the most efficient and effective way of passing on police information quickly and there appears to be a 100% support for the Scheme in the village. If you move house please leave your list for the next occupant so that contacts can continue without interruption.

PLEASE RETAIN YOUR NEW TELEPHONE LIST FOR FUTURE REFERENCE

Christine Bilsborough

CONSUMER AFFAIRS

Up-to-Date News for Consumers

Summer 1999 Issue



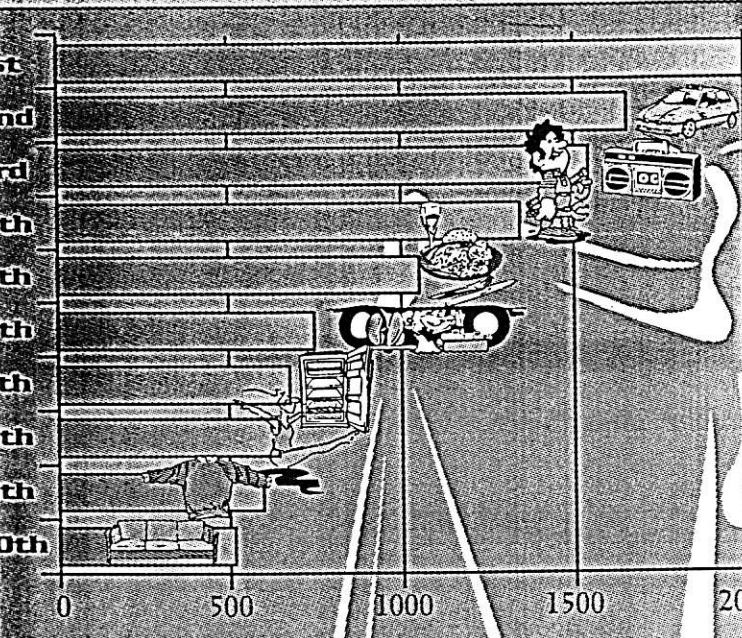
Trading Standards


Our aim is to promote a fair and safe trading environment for the people of Leicestershire, Rutland and Northamptonshire. Whether you are a consumer or a trader you are equally important to us.

TOP 10 COMPLAINTS

The number of complaints and enquiries from consumers rises steadily each year. Collectively, advice officers in Northamptonshire and Leicestershire dealt with over 20,000 enquiries from the beginning of April 1998 to the end of March this year.

By analysing consumer complaints and enquiries we are more able to identify and investigate problem trading areas and direct our resources where they are most needed. These are the top ten problem trading areas in Leicestershire, Rutland and Northamptonshire for last year.



Second-hand Cars 

Other personal Goods & Services

Radio/Television, Electrical Goods

Home Maintenance

Food & Drink

Motor Vehicle Repairs

Major Appliances - cookers & fridges

Other Recreational Goods & Services

Clothing & Clothing Fabric

Upholstered Furniture



Top of the charts is 'Second-hand Cars' which accounted for almost 2,000 complaints. 'Other Personal Goods and Services' which closely followed, includes services like driving schools, undertakers, advertising, homeworking schemes and dating agencies.

Problems with food and drink ranked 5th with over 1,000 recorded complaints. Growing concern about the number of complaints regarding food displayed for sale after its 'use by date' prompted us to carry out a joint regional survey into the problem with other Trading Standards Services - see 'Food for Thought' inside.

Remember you are the eyes and ears of the Trading Standards Service. Information provided by consumers is essential in detecting problems in the market place such as misdescribed or unsafe goods. So if you see a problem or suspect that a trader is breaking the law call your local Trading Standards Service now - contact details are on the back page.

In this issue...

- Holidaymakers must Tow the Line!
- A Fishy Tale!
- The Cutting Hedge of Garden Safety!
- Financially Embarrassed?
- New rules to Stop Junk Faxes
- Changes to Small Claims Procedures

WHAT DO WE DO?

Fair Trading: Check on price indications, descriptions of goods, textile labelling, counterfeit goods and consumer credit
Product Safety: Try to ensure the safety of all consumer goods including toys and electrical equipment
Food: Monitor labelling, compositional standards, and nutritional claims
Road Traffic: Take action against overloaded vehicles
Petroleum* & Explosives: Licensing, registration and inspection of safe storage. (*not Northamptonshire)

Animal Health & Welfare: Enforce the law dealing with movement, licensing, welfare, and the prevention of the spread of infectious diseases including rabies
Metrology & Calibration: Ensure the accuracy of weighing and measuring equipment in use for trade and provide a calibration service to industry traceable to national standards
Information & Advice: Provide help to consumers and traders about their rights and responsibilities under trading laws

Product Recalls

BOOT'S MICRO WARMER return to retailer or telephone Customer Helpline on 08450 708090.

BROTHER DOMESTIC SEWING MACHINE models: VX 1120, VX1120S, VX 1125, VX 1130, VX 1140, VX 1145, VX 1400, VX 1410, VX 1420, VX 1430 VX 1440, VX 1450 (only 240v -220v models). Contact Freephone 0800 731 3553 between 8am to 8pm daily, to arrange a free safety check.

CARBON MONOXIDE DETECTOR - KIDDE SAFETY LIFESAVER 9CO-1. Units made between 1.6.97 and 31.1.98 are defective. Telephone 0800 917 0722 or check web site address to see if your unit is affected.

LADYBIRD BOYS/GIRLS TARTAN DRESSING GOWN - style no. 43356W (£5.99). Sizes 2/3yrs, 4/5yrs, 6/7 yrs and 8/9yrs purchased since October 1996. Return to Woolworths for refund.

H & M HENNES GIRLS NIGHTDRESSES -light blue cotton with rose print detail on front with 'Sweet Roses like you' printed below, sizes 98-140cm, price £4.99, sold since 10.8.98. Return to store or telephone 0171 323 2211.

VIDAL SASSOON STEAM AND STYLE. For free safety inspection send item to Hot (UK) Ltd, Freeport NEA5553, Sheffield, S9 3TW or telephone 0114 2420405 for more information.

PHILIPS MULTIMEDIA PC LOUDSPEAKERS with product codes PCA120SA and PCA300SA sold between 1996 and 1999. Stop using immediately and contact Freephone 0800 896324.

PHILIPS JUG KETTLES type nos. HD 4388, HD 4389, HD 4390, and HD 4391 with 4 figure batch numbers starting with 92 or 93 on base of kettle, stop using immediately and call 0800 9171061.

MARKS AND SPENCER JUG KETTLES with filters made in 1992 and 1993. Style and type nos. Ashberry 1352; Harvest 1353; Autumn Leaves 1354; Ashberry with filter 1394; Harvest with filter 1395 and Orange Blossom with filter 1387. Only products with 4 figure batch numbers starting with 92 or 93 on base of kettle are affected. Return to store or telephone 0500 405 406.

HOUSE OF FRASER 'CUDDLIES' SOFT TOY/COMPANION TIGER TOSS. Product no. 553 005 355 price £20 sold since 15.8.98. Return to retailer.

How to Contact us:

Leicestershire & Rutland

If you have problems with something you've bought or are trader with a business enquiry, then the Duty Officer is available to deal with enquiries from:

8.30am - 4.30pm Mon-Thurs 8.30am - 4.00pm Friday
(after hours answering service)

The above hours are extended by half an hour for personal callers to County Hall

Telephone Leicester (0116) 2657979 (minicom available)
Fax (0116) 2657353

e mail aread@leics.gov.uk Website: www.leics.gov.uk

Personal callers or letters to:

Trading Standards Service

Regulatory Services Department

County Hall, Glenfield, Leicester, LE3 8RN

Northamptonshire

We are pleased to accept your queries at our Advice and Information Service, which is available

8.30am - 5pm Mon-Thurs 8.30am - 4.30pm Friday
(with after hours answering service)

Telephone Northampton (01604) 707909

Minicom No. (01604) 707900

Fax (01604) 707901

e mail tradestd@northamptonshire.gov.uk

Personal callers or letters to:

Trading Standards Service

Wootton Hall Park, Northampton NN4 0GB

Free car parking is available at both authorities
Signing service for the deaf is also available by appointment.

This information is available in
large print format.
For more information
telephone (0116) 2657367

Note from the Editor

Welcome to the Summer Edition of Consumer Affairs. If you have only recently had the opportunity of reading Consumer Affairs I hope that you found it useful and informative. If you have any comments or suggestions for future articles please let me know and I will do my best to take on board any new ideas. Your letters can be sent to me at Leicestershire Trading Standards Service.

Although this edition doesn't particularly focus on seasonal issues, it does contain lots of general information including how to get help with financial problems, putting a stop to unwanted junk faxes or telephone calls and new procedures in the Small Claims Court.

If you are the owner of an 'S' or 'T' registered car and planning to take your caravan or trailer away on holiday this year the article on new towbar regulations will be of particular interest to you.

Wishing you all a safe and happy Summer.

Regards Karen Nolan



Financially Embarrassed? call the HELPLINE!



We all have financial commitments but sometimes events such as a relationship breakdown, changes in family commitments, illness, changes in benefit or redundancy can affect our ability to manage. When that happens, we need to act quickly before a problem becomes a disaster. If you are having financial difficulties and struggling to make ends meet, remember help is only a phone call away.

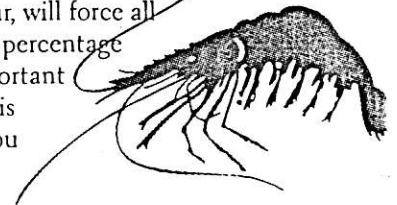
The National Debtline	0645 500 511
The Consumer Credit Counselling Service	freephone 0800 138 1111
The County Debtline for people living in Leicestershire	0870 9000939 (calls charged at the national rate)

All Citizens Advice Bureaux in Northamptonshire also provide a debt advisory service.

A Fishy Tale!

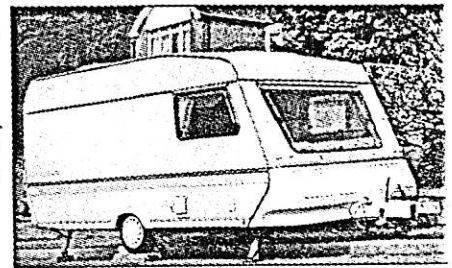
In a recent survey of scampi in breadcrumbs we were shocked to find more than half the samples tested contained less than 50% scampi and should really have been described as breadcrumbs and water with scampi. In the worst case there was only 33% scampi in the food - normally we would expect these types of food to contain at least 50%.

Currently, there is no legal requirement for manufacturers to mark the percentage of scampi content, so you only have the name to help you get the best buy. Only two samples out of the seventeen tested declared this on the packaging. The good news is that new rules, which come in next year, will force all manufacturers to declare the percentage scampi on the pack. It is important for you to start looking for this information to ensure that you get value for money and the quality you want.



Holidaymakers must Tow the Line!

With the holiday season just around the corner you may be planning to take to the road with a caravan or trailer of some kind. If so, and you drive an 'S' or 'T' registered vehicle, recently introduced legislation now means that your towbar must be European Type Approved.



If this applies to you, make sure that your towbar is of the correct type by checking the label, data plate or stamp, it should show an "E" No. e.g. E11*0001*00. If you fail to do so you risk prosecution by the police and you could invalidate your insurance in the event of an accident claim.

Drivers of 'S' or 'T' registered cars that have been declared by the manufacturer as unsuitable for towing should also remember that towing or even fitting a towbar would make them subject to prosecution. A trader who fits an unapproved towbar to a car registered after August 1998 may commit an offence under legislation enforced by the Trading Standards Service.

If you would like more information contact your local Trading Standards Service - details are on the back page.

Further Fall in Firework Injuries

The full impact of the Fireworks (Safety) Regulations 1997 coupled with last year's firework safety campaign, has led to yet another fall in the total number of reported firework injuries.

We are pleased to report that injuries caused by sparklers, the main focus of last year's safety campaign, fell by over a third while injuries caused by hooligan behaviour fell by 12%. Overall there was a 35% drop in serious injuries. Last year's firework season was the fourth in succession to show a drop in the total number of firework injuries:

And on the enforcement news front ...

In the run-up to the firework season last year we inspected firework sellers to check their safe storage and ensure that only safe and permitted fireworks were being sold. No major problems were detected in Leicestershire or Rutland, but of the 101 premises checked in Northamptonshire, 22 revealed incorrect storage problems. Traders in Northamptonshire were offered an amnesty for banned fireworks during October – retailers voluntarily surrendered 2,300 bangers and 160 mini rockets. And, in a separate undercover investigation in Leicestershire and Rutland, Officers visited local shops to check if they were willing to sell fireworks to youngsters under the age of 18. Unfortunately 2 of the 54 checked did – both have since received written warnings.

Food for Thought

In a recent survey of 33 supermarkets across the East Midlands region Trading Standards staff detected a total of 127 items of food which were on sale after their 'use by date'. 31 items were found in Northamptonshire and 11 in Leicestershire, with many more removed from sale because of obscured dates.

Food that has gone past its 'use by date' may pose a serious risk to health in particular for the young and elderly. Any retailer who sells or has on display food after its 'use by date' can face a fine of up to £5,000 for each item of food. Magistrates recently imposed a £17,500 fine on a store in Leicestershire following the discovery of food sold after its 'use by date'.

The results of the survey resulted in the launch of an East Midlands' Hot line for a two week period during May for consumers to report retailers who were selling out of date food. REMEMBER, if you see any food on sale after its 'use by date' we would like to hear from you.

Frustrated with Faxes? Troubled by Telesales?

The new Telephone Direct Marketing Regulations mean that you now have greater protection against unwanted direct marketing 'junk' faxes and phone calls. You can 'opt out' of receiving unwanted direct marketing phone calls by registering with the Telephone Preference Service. Similarly, both consumers and businesses can ban anyone from sending junk faxes to their home or trade premises by registering with the Fax Preference Service.

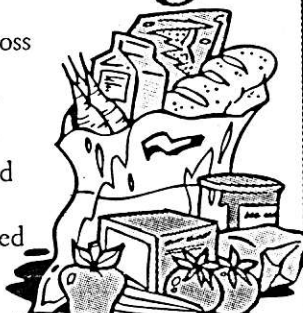
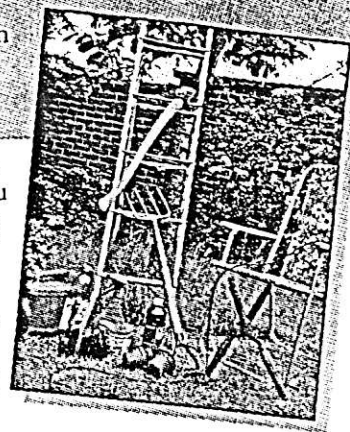
The Data Protection Registrar is now able to take action against persons acting in breach of the Regulations if he receives an adverse report from the Director General of OFTEL. He may also consider complaints from individuals.

The Cutting Hedge of Garden Safety

With warm weather on the horizon (we hope), for many of you, your garden will soon become a hive of activity or a haven of relaxation.

Whatever, we ask that you bear in mind our advice to ensure that you and your family are at the 'cutting hedge' of garden safety!

- Use tools with care - check them regularly for wear and tear and, where appropriate, use a Residual Current Device (RCD).
- If you hire garden tools make sure you know exactly how they work and check what personal protective equipment you need to use, like goggles or ear defenders – and always follow the instructions.
- Keep your garden tidy - dangers exist in trailing leads and in all kinds of clutter or rubbish left lying around, like broken glass or discarded garden tools which are all potential hazards.
- Keep children and pets away from work areas and make sure you know where they are at all times.
- Start bonfires and barbecues well away from sheds, fences and hedges.
- Keep all garden poisons and chemicals safely locked away from children.
- If you're using a ladder follow the instructions very carefully and remember the ladder rule: position the foot of the ladder one measure out for every four measures high.



Changes to Small Claims Procedures

New procedures for seeking redress in the Small Claims Court came in to effect at the end of April this year. Amongst the changes there was a rise in the limit for claims from £3,000 to £5,000; and, rather than an arbitration hearing, the procedure is now an informal trial which is open to the public.

Fees are now payable as the case progresses - they start at £20. An additional £80 flat rate fee is also payable on return of an allocation questionnaire which is sent to all parties should the case be defended. Anyone in receipt of income support etc. may be exempt from paying fees.

Expert witnesses, who may now only be used at the discretion of the court, will be expected to assist the court rather than solely support the claimant. The maximum claim allowance for an expert's fee is now £200 including any attendance fees. In most cases a written report will be considered sufficient.

For more information on seeking redress in the Small Claims Court contact your local Trading Standards Service.



Summary of Events

Sun 1 Aug 10.00am United Benefice Sung Eucharist - **Harlestone**

Mon 2 Aug 7.30pm Gardeners' Association - Portrait of Colour - Janet Cropley

Sun 5 Sept 10.00am United Benefice Sung Eucharist - **East Haddon**

Mon 6 Sept 9.30am Brington & Whilton Pre-School - Autumn Term commences

Wed 8 Sept 7.30pm Women's Institute - Visit to Hellidon Vineyard

Sat 11 Sept Sponsored Cycle Ride

Mon 20 Sept Newsletter Deadline for October Issue

Sun 26 Sept 9.30am Harvest Festival Family Service

The Whilton newsletter is published bi-monthly and circulated free to every household within the Parish boundary. The costs are met by the Parish Council. The Editors are:

Harold & Trudy Haynes - The Old Plough, Main Street
Derek & Shirley Brown - Cherry Orton, Main Street

Contributions to the newsletter to any of the above **BY THE DEADLINE DATE, PLEASE**
