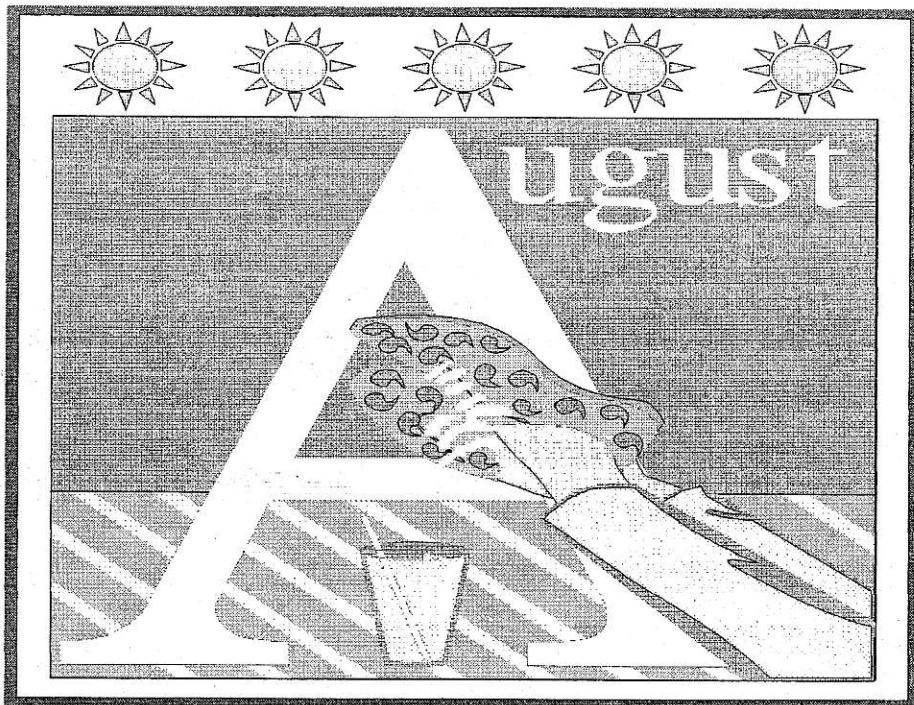
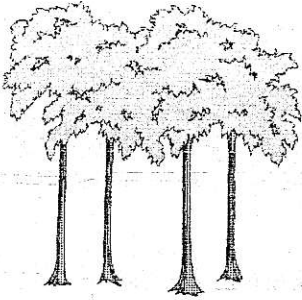


# WHILTON NEWSLETTER

Issue *AUGUST* 2002



**NEWS FROM ALL AROUND THE PARISH**

# WHILTON GARDENERS' ASSOCIATION

Seventeen members attended the July Meeting. Janet Bowers presided in Ian Wood's absence. We were notified that the forthcoming visit by the Judge for East Midlands in Bloom was scheduled for Thursday 11th July. Hanging baskets, planters and window boxes were also to be judged.

The proposed outing to Hidcote Manor was discussed and numbers taken for the September outing.

The subject that evening was Carnations and Pinks: we had a very informative talk on propagation and preparation for showing all round the country. The Speakers then showed slides of the various blooms.

The next meeting will be on Monday 5th August at 7.30 pm at the village hall and the subject "Gardening up the Wall"

## GUIDE DOG PUPPY WALKING

I wrote to you last year telling you about my puppy walking for Guide dogs and here is an update.

Major, our current dog, is now 11½ months old and nearing the end of his stay with us. He came aged six weeks, a little bundle of yellow fluff. He has been a lovely dog to walk, very loyal and a wonderful fun-loving character who loves people. We have taken him to lots of places and he takes it all in his stride.

Percy, our previous dog has qualified successfully and is working with Mr Brown in Kettering. We are hoping to meet them both at the Open Day in July.

Percy came back to stay at Christmas, it was lovely to see him again, he was just the same and he and Major became great friends.

Major is due to start his next stage of training in early July after coming to Devon with us for hopefully start all over again in July with a black Labrador bitch called Penny.



Wish us luck!

***LATE NEWS- Penny has now come to live with us and will soon be seen around Whilton.***

***From her picture you can see what an adorable bundle of mischief she is.***



**Jean Davies, Whilton**

## WHILTON GOLDEN JUBILEE CELEBRATIONS WEEKEND



Saturday 1<sup>st</sup> June saw great activity in the transportation of tables, chairs and equipment from the village hall to Roughmoor Grounds. The barn was prepared for the Barn Dance and Pig Roast and many hands made light work of this task.

The event was very successful, the attendance being in the order of 150 people and the music and dancing was thoroughly enjoyed, not to mention the excellent pig roast supplied and served by Ian Brodie Catering Ltd. This was supplemented with an excellent salad and quiches supplied by some parish ladies who also helped with the serving.

The weather was very kind to us although the prevailing wind felt cooler as the evening progressed, causing more people to retreat into the warmth of the barn. The evening closed with the last gate to the farmyard being shut at approximately 11.30 pm with everyone having had a very enjoyable time.



Sunday was a rest from the celebrations but early Monday, 3<sup>rd</sup> June, our team of workers were busy again removing the furniture and equipment from the barn including loading the trailer with straw bales and leaving the barn neat and tidy.

The furniture and equipment were moved to Gordon Emery's field in Wadd Close to prepare for the afternoon's Village Tea Party and Games.

Setting up the marquee and framed tent was not uneventful with the rather strong wind and heavy showers but determination resulted in all being prepared for the start at 2.00 pm.

By this time there was a great improvement in the weather and an excellent start to the occasion was made by our local young musicians (and associates) playing appropriate medleys, suitable for the celebration. The performance was excellent, well done!

In the tents a super spread of food was laid out, all having been contributed by people in the parish; we even had a Jubilee Cake donated and decorated by Diane Day and friends.

The games and races (organized by Paul Day) were enjoyed by all ages and the afternoon closed with the 'big boys' playing football.

This event was well attended again by at least 140 parish folk with relatives and friends. On both occasions there was a wonderful community spirit present and brought back memories of bygone years. We would like to thank all who helped (and this was in many ways) to make the weekend so memorable. Also Joan & Griff for making the barn available and to Gordon Emery for the use of his field in Wadd Close for without these facilities, it would not have been possible to stage these events.

Whilton Jubilee Committee





**WHILTON VILLAGE  
GOLDEN JUBILEE 2002**

**VILLAGE TEA PARTY AND GAMES**



"Pause"for Thought

If you can start the day without caffeine or  
pep pills,  
If you can be cheerful ignoring aches and  
pains,  
If you can resist complaining and boring  
people with your troubles,  
If you can eat the same food every day and  
be grateful for it,  
If you can understand when loved ones are  
too busy to give you time,  
If you can overlook when people take things  
out on you when through no fault of yours,  
something goes wrong,  
If you can take criticism and blame without  
resentment,  
If you can face the world without lies and  
deceit,  
If you can conquer tension without medical  
help,  
If you can relax without liquor;  
If you can sleep without the aid of drugs,  
  
Then you are probably a cat or a dog.



## WHILTON WI SUMMER DINNER

**O**N Thursday evening 11<sup>th</sup> July ten members and three husbands travelled along the A5 to Peggottys at Fosters Booth. The weather was dry and pleasant after the thunderstorms earlier in the day.

The food was excellent as usual and beautifully presented. Everyone had a very enjoyable time; there was lots of laughter and the world was sorted out and put to rights.

Shirley Brown

## **Relaunch of Whilton Parochial Charities**

From previous comments and the annual report reproduced in these pages you will know that these three charities provided for the poor and needy of the parish have been little used over the last ten years. The Charity has about £5500 in assets, although this fluctuates as much of it is in Charity Shares affected by the down swing in the financial markets. It has an income from dividends and bank interest of about £150 per year.

In the absence of a Rector trustee, Ann Gilbert, the Community Trustee, and myself, as the Parish Council Trustee, met recently to decide how the monies could be accessed more easily by those in need in the parish. We made the following decisions for the remainder of this financial year:

- i) The Trustees are prepared to give up to £750 in grants in sums not exceeding £250 and limited to one application per financial year.
- ii) These would be given on receipt of a written application in confidence, explaining the need and difficulty in financially meeting it, or if preferred an interview with one of the trustees which they would record..
- iii) The need may be a piece of equipment or experience that anyone with reasonable means could be expected to acquire. eg. A replacement mattress, TV licence, small house repair, musical instrument, evening class/skill giving course, playgroup fee, taxi fare to visit relative/friend in hospital, holiday break or significant school trip/D of E expedition that would fulfill potential.
- iv) Poverty is to be defined for an older or disabled person as living solely on a basic state pension or benefit, for a family living on an income half the national average wage, and for young people in their own right in a situation where it would not be expected a parent would fund the expense required. The payment may be requested to avoid consequences of a loan or the incurring of further debt.

Over the summer the Trustees will be reminding Health and Social Care Services and all the local organizations of the existence of this fund for anyone normally resident in the Parish Boundaries. We will review this new approach at the close of the year and if necessary make changes to the above criteria. Meanwhile we would wish any of you who fit them to consider applying and others to mention the possibility to those who should benefit from the forethought of previous wealthier generous parishioners. Any observations or further suggestions for getting help to the right people would be welcome.

**Keith Hiscock Clerk to the Parish Council.**

## PARISH MATTERS!!

The Parish Council met on 1<sup>st</sup> July in the presence of four members of the public. The business allowed some celebration of achievements, a taste of further work to be done, and some keenly argued debates. The Council excelled in its function to consider from different viewpoints the best interests of the parish community and its future environment.

**Celebrations:** All who had organized and helped with **the Jubilee Barn Dance and Afternoon Party** were to be congratulated on their success as a superb all age community participation much enjoyed by all. On top of that Mr Brown who had acted as treasurer was able to refund to the Council £211-63 of the £250 given to the Event Committee to underwrite its activities. All that fun and sense of community for under £40- must be some sort of record!

Keen observers of the village scene will be able to spot some longer term aims achieved. A phone call to the Post Office has produced a **repainted post box** in time for the summer competitions. The lobbying on the **Z bend at the bottom of the village** had by the meeting turned white paint into yellow and, as I write this, **a beautiful smooth surface** at last. Our thanks must be expressed to Cllr. Richard Amos for his assistance on this.

Contact with ABB who maintain our village lights produced an overdue **clean of all our light lenses** and an acceptable quote for the **new street light between the Village Hall and the corner of Holly House**. This will be attached to the electricity standard outside Rose Cottage and eliminate the last really dark patch of village street for next winter.

**The Village Green Project** was launched as an aim for this year. This will involve gathering evidence from those who have been in the village for over twenty years that can confirm it has been an open space used for recreation all that time. **Please contact me if you are someone prepared to say this or have photos of it being used in some recreational way.** It is a lengthy process but one the village can take pride in achieving. It was agreed the clerk should approach residents potentially affected by two possible connected changes. The Council would like to resite to the opposite side of the road the Salt bin that takes up room and adds nothing to the enjoyment of this centre of the village. It has also been suggested with the eight properties that now come off this indent from Main Street that this could be the time to give it its own street name. This was canvassed once before and some suggestions made. The District Council will adopt a name and provide the name plate if two thirds of affected residents agree on a name. This was how Wadd Close Lane got its name in the 90's.

The clerk was **unable to be as helpful** on two other areas that were raised at the Annual Parish Meeting. **The question of a 20mph limit in the village** was not viewed as likely to be agreed by the NCC official, although new Government Guidelines are awaited. There is also no money available for **putting electricity lines underground**. The only way this might be done is because some danger is identified or the area is redesignated one of historical interest or natural beauty! That said it was agreed there should be an



**application to improve footpath stiles** this year that are broken or difficult from the NCC Area Fund!

**Good Order in the Council** Although perhaps of less interest to the parish there was some sense of achievement in the clerk being able to report that the Council was one of the first to register its adoption of the Model Code of Conduct with the Standards Commission and the DDC Standards Subcommittee and to provide completed registration of Members Interests. A copy is retained by the clerk for Parish Council Meetings. The Council also decided to join with other Parish Councils in appointing an internal auditor to meet the new Audit conditions through the Panel of Northampton Association of Local Councils for this and next year. It is perhaps ironic that these new regulations celebrated nationally as some victory over red tape and unnecessary expenditure will cost our council more and involve more work. Such is progress!

### **Room for Difference**

Finally two discussions showed the value of debate and differences of approach.

**Village Confines** The first concerned planning consents. The old idea of a village envelope for planning has gone but each parish council has been invited by the DDC to draw if they wish a village confines outline around the village or Parish that would show where development was seen as possible. Planners and applicants would bear this in mind in determining planning applications within a climate in which it is expected officers rather than elected Councillors will make 90% of decisions. Appeals would continue to be possible and Councillors would still decide larger/more controversial applications. After much debate the Parish Council decided to send in a line around the village much resembling the old envelope but including gardens. It was agreed to ask the Chairman to check the implications but if advantages were confirmed for the present status of the Locks then it was to have no confines.

**Whilton Mill** The second issue concerned noise from engines at Whilton Locks. Following the sending of the eight completed forms received to date evidencing some upset with the noise to the DDC and to the Mill, a reply had been received from the Mill. (The District Council had apparently not given its copies of the forms to the Environmental Health Officer named and no reply had been received by the date of the meeting.)

The Mills Chief Executive a Mr Delano-Thompson appears in his reply to believe the concern was 'being spearheaded' by the Parish Council not as a result of residents' comments to members. He states he has made significant communications with Whilton residents and is able to confirm the majority of inhabitants remains unaffected, yet conversely are commendable of Whilton's contribution towards local employment and business rates.' He confirms to his satisfaction apparently that all the dates cited are MSA events(although some are Wednesdays and the last two weekends were bad) and the noise generated does not contravene HSE regulations.

In the discussion it became clear that some parishioners do financially benefit from work at the mill, and others consider the Parish Council was unfairly opposing all activity rather than just this specific noise. This some had not heard or did not find it disturbing.



The Chairman and clerk wished to remind everyone that the diversification at the Mill had been welcomed, and no critical comment had been made over its activities apart from the noise of revving high-pitched engines and use of helicopters. It was on record that two people had supported the Mill over the noise, one in person, the other by a form. It was clear the law on noise nuisance was about individuals, not majorities, and the Council believes in its complaints about this noise it is fulfilling its role as the voice of the Parish to an entrepreneur carrying out a new now highly concentrated activity with larger engines.

No councillor had any knowledge of this Mill consultation with the village or residents at the Locks, which was spoken of so confidently, so the Council decided it was important while seeking to continue dialogue with those involved, that it did its own survey to find out opinion. The Clerk was asked to organize this, as well as write a reply to the letter, and seek the position of the District Council. In the meanwhile the Mill offer in the letter to help illuminate the Village Church would be referred to the correct authority, the Parochial Church Council, and the offer to help other village causes reported in the magazine.

**We live in interesting times !! See you at the next meeting—8pm 2<sup>nd</sup> September.**

**Keith Hiscock Clerk to the Parish Council**

## **Brington & Whilton Pre-School**

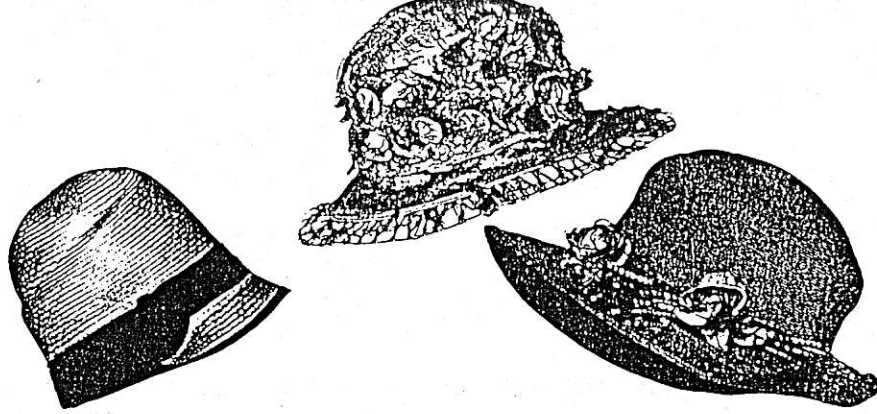
As another school year ends, we look back with fond memories of all we have achieved. We have had a good year with 15 children attending some mornings and of those children we see 7 of those moving to 'big' school this year. It has been good to see them grow in confidence and learning to mix with other children and it will be sad to see them go, but we wish them well as they enter school.

During the last term we have been busy talking about summer, painting butterflies, looking at trees and fruits and flowers around us, talking about the seaside and holidays and even eating ice creams!

On Friday mornings during this term we have had an enjoyable time at Brington School joining in with their activities and getting to know the teachers and children. This is a tremendous help to the children in the transitional period and we thank the school for inviting us to join them.

We recently have had an enjoyable outing to West Lodge Farm Park where the children were able to cuddle and feed the animals, have tractor rides and play in a play barn.

We start back after the holidays in September with 10 children at present on the register. However, we do still have some vacancies and if you have a child between 2yrs 6mths and school age and are interested in having a look around please call **Jenny Holman on 01604 770083 for more information.**



### SILVER AND HATS AT THE W. I.

Silver was the theme for our June meeting, when an amateur silversmith, Mr John Brian, came to share his enthusiasm with us.

Mr Brian brought some pieces of silver, which he has made, including an ebony handled tea service and a beautiful Britannia silver bowl. We also had the opportunity to examine and hear Mr Brian's opinion on a number of silver items, ranging from a Victorian trinket box from India to an American teaspoon and a Bible cover.

He explained the different types of silver, including Sheffield plate, which has a fine layer of silver on copper, electroplated nickel silver and soft Britannia silver. We learned about the need for standardisation which led to the introduction of silver marking from 1300, and the different markings leading up to the Millennium mark for 2000. This year, the Queen's head can be added to the hallmark for the Golden Jubilee.

There was also advice on cleaning silver. Silver oxidises to black, but should be cleaned sparingly, especially the hallmark, which can be in danger of being rubbed away. Abrasives should never be used. Mr Brian recommended Goddard's long term silver pad for the occasional special clean, but would just use an impregnated cloth to remove dust and finger marks for regular cleaning. Some "magical" silver dips should also be avoided, as they may be corrosive.

For a special experience of beautiful silver, he suggested we should make a visit to the treasury in the crypt of St Paul's Cathedral or the Gilbert Collection in the Victoria and Albert Museum.

Our July meeting was an evening of fun, as we learned about the art of millinery and then had an opportunity to try on a variety of special occasion hats. We were advised on colours and styles which suited us by Ann Dennis-Jones, who runs a business selling and hiring hats from Church Farm, Harrington, near Rothwell.

Whilton WI will not be meeting in August, but our next meeting will be on Wednesday, 17<sup>th</sup> September, when the speaker will be talking on "SKIN CARE AND MAKE UP." This will be an open meeting. If you would like to join us in the Village Hall, you will be very welcome.

Anthea Hiscock

## **CHURCH MATTERS**

### **VILLAGE OPEN GARDENS and FLOWER FESTIVAL** **SUNDAY, 30<sup>TH</sup> JUNE**

The weather started fine and after the first hour which was quiet, probably due to the World Cup Final, the village became alive with visitors. Seven gardens opened for viewing, stalls sold their wares on the green and scarecrows in many guises appeared in front gardens.

In St Andrew's Church the beautiful flower arrangements received much admiration and the wedding dresses, one for each decade of the last 50 years, caused much interest.

For the first time the younger members of the church arranged flower displays based on the theme of the Festival - wedding anniversaries 1 - 50 years. They created displays for paper (1<sup>st</sup>), leather (3<sup>rd</sup>), wood (5<sup>th</sup>), iron (6<sup>th</sup>), pottery (9<sup>th</sup>) and posies for the niches on the pillars. All were excellent!! Congratulations to Hannah and Abigail James, Jessica and Abigail Hawkins, Juliet Bunce and Amy McLeish.

The Festival was a great success due to the hard work involvement and donations of those who took part and to those who visited.

On behalf of St Andrew's PCC a big THANK YOU to EVERYONE.

The total profit from the event is £1,117.84 which is divided 50/50 between the Church General Fund and the Kitchen Fund,

Janet Bowers



**Dates for your diary**

### **CAR BOOT SALE**

Hard up after those summer holidays?

Saving up for Christmas?

Why not make money at the CAR BOOT SALE TO BE HELD IN Wadd Close on Sunday 8<sup>th</sup> September 2002 at 12 noon?

Reserve your plot now from Linda Treacy or Janet Bowers.

### **HARVEST FESTIVAL**

SUNDAY 29<sup>TH</sup> SEPTEMBER - Family Harvest Thanksgiving Service - 9.30 am

Harvest Supper and Auction of Produce in the Village Hall @ 6.00pm

# **SERVICES FOR ST ANDREW'S CHURCH WHILTON**

## **AUGUST 2002**

<b><u>4TH AUG</u></b>	<b>10.00 AM</b>	<b>UNITED BENEFICE SUNG EUCHARIST AT NORTON</b>
<b>11<sup>TH</sup></b>	<b>11.00 AM</b>	<b>FAMILY SERVICE</b>
<b>18<sup>TH</sup></b>	<b>6.00 PM</b>	<b>SUNG EUCHARIST</b>
<b>25<sup>TH</sup></b>	<b>11.00 AM</b>	<b>FAMILY SERVICE</b>
<b><u>1<sup>ST</sup> SEPT</u></b>	<b>10.00 AM</b>	<b>UNITED BENEFICE SUNG EUCHARIST AT EAST HADDON</b>

CHEERS! WHILTON

As a relative newcomer to Whilton, I feel that I can still be reasonably objective about the village and on that basis I just felt that I would like to comment briefly on the marvellous efforts made recently to celebrate the Jubilee and, again at the end of June for the Flower Festival and Open Gardens day.

I really feel that everyone involved in any way at all with these events deserves a wholehearted 'thank you'. Although I wasn't able to attend all three events, I understand they were, without exception a complete success. Of course we all know that nothing organises and runs itself; that barn dances, parties, festivals and events of all kinds, demand time and commitment, and this, in a world which seems to be ever increasingly calling on these precious commodities. It is therefore, in my view, even more commendable that people in this small village do take the time to arrange community events and, it's just as heart-warming to see them supported by other residents.

More generally, I think the people of Whilton can be very proud of themselves. There is a lot happening here - there are clubs and groups, the spinney project, a regular newsletter, occasional events and a committed parish council - all delivered through volunteers. It feels to me as though there is a real sense of community.

So thank you, to all of you involved people, at least from me, for making Whilton an even nicer place to live.

Ann Gilbert



## WHILTON VILLAGE HALL 200 CLUB

### MAY

1st Prize	038	A Tilston	£40
2nd Prize	005	B Fisher	£20
3rd Prize	148	A Hiscock	£10

### JUNE

1st Prize	108	K Wheeler	£40
2nd Prize	025	N Swinford	£20
3rd Prize	030	K & J Davies	£10

CONGRATULATIONS TO ALL THE WINNERS

### ***IN BRIEF.....***

**COUNTY LIBRARY SERVICE** - *Just a reminder that the library van calls in the village every other Tuesday (except Bank Holidays) at approximately 9.10 am to 9.30 am. The van generally parks near The Old Plough, Main Street. Good use needs to be made of this service if it is to be retained; why not make a visit to the van for your reading material? The AUGUST dates will be 13<sup>th</sup> & 27<sup>th</sup> and SEPTEMBER dates will also be 10<sup>th</sup> & 24<sup>th</sup>.*

**FRANKINSTEIN** - *by the Looking Glass Theatre will be performed in Whilton Village Hall on Sat. 9<sup>th</sup> November 2002. Further information in October Newsletter and on noticeboard.*



### THE WHILTON SPINNEY PROJECT



Since last writing, the boardwalk has now been completed and as well as a practical solution to gain access over the very wet areas, it has an aesthetic factor. Unfortunately our application for a grant was not successful, the timing was our downfall.

Work still continues, although a little restricted, with the clearing of the wood from the Italian Black Poplars as it has disappeared under the exceptional growth of plants due to the extra light. We are therefore currently working on improving the path along the south-east side. The aim is to keep the spinney natural but access must be of a reasonable standard for all our parishioners to manage.

We are shortly to have an Annual General Meeting, so do come along and let us have your views and we will be discussing and planning for a major re-plant of native trees in the autumn. Perhaps you would like to sponsor a tree! Watch the noticeboard.

We have also been giving some thought to a permanent name for the spinney incorporating the name 'Davies' – perhaps the "Davies Conservation Area / Wood"! Any ideas – please submit to the editors.

Whilton Spinney Management Group.

## Summary of Events

Sun	4th	Aug	10.00 am	Benefice Service Norton All Saints Church
Mon	5th	Aug	7.30 pm	WGA "Gardening up the Wall" 7.30 pm in Village Hall
Tues	13th	Aug	9.10 am	Library van in village
Tues	27th	Aug	9.10 am	Library van in village
Mon	2nd	Sept	8.00 pm	Parish Council Meeting in Village Hall
Mon	9 <sup>th</sup>	Sept	8.00pm	Village Hall Committee Meeting
Weds	11th	Sept	7.30 pm	WI Meeting in Village Hall "Skin Care and Make up"
Tues	10th	Sept	9.10 am	Library van in village
<u>Thur</u>	<u>19<sup>th</sup></u>	<u>Sept</u>		<b><u>Newsletter Deadline</u> Please hand in your Contributions by this date otherwise we cannot guarantee they will be included in the next edition.</b>
Tues	24th	Sept	9.10 am	Library van in village

---

The Whilton Newsletter is published bi-monthly and circulated free to every household within the Parish boundary. The costs are met by the Parish Council. The Editors are:

Derek & Shirley Brown - Cherry Orton, Main Street  
Sara Meadows - Courtyard Barns, Manor Lane

We are always pleased to receive additional contributions from people who do not normally have an input, especially children. Articles of local interest, poems, recipés, puzzles or drawings will always be considered for inclusion in the Newsletter.

*It would be most helpful to the Editors if regular contributors to the newsletter would consider submitting their article, if preparing on a PC, via a disk (saved to floppy disk A/drive) or by email ([saraspicer@lineone.net](mailto:saraspicer@lineone.net)) or ([shirdek@btopenworld.com](mailto:shirdek@btopenworld.com)) For those who do not have this facility please produce articles as they have done in the past.*

**Any contributions to the newsletter by the deadline date, please. to any of the above Editors.**