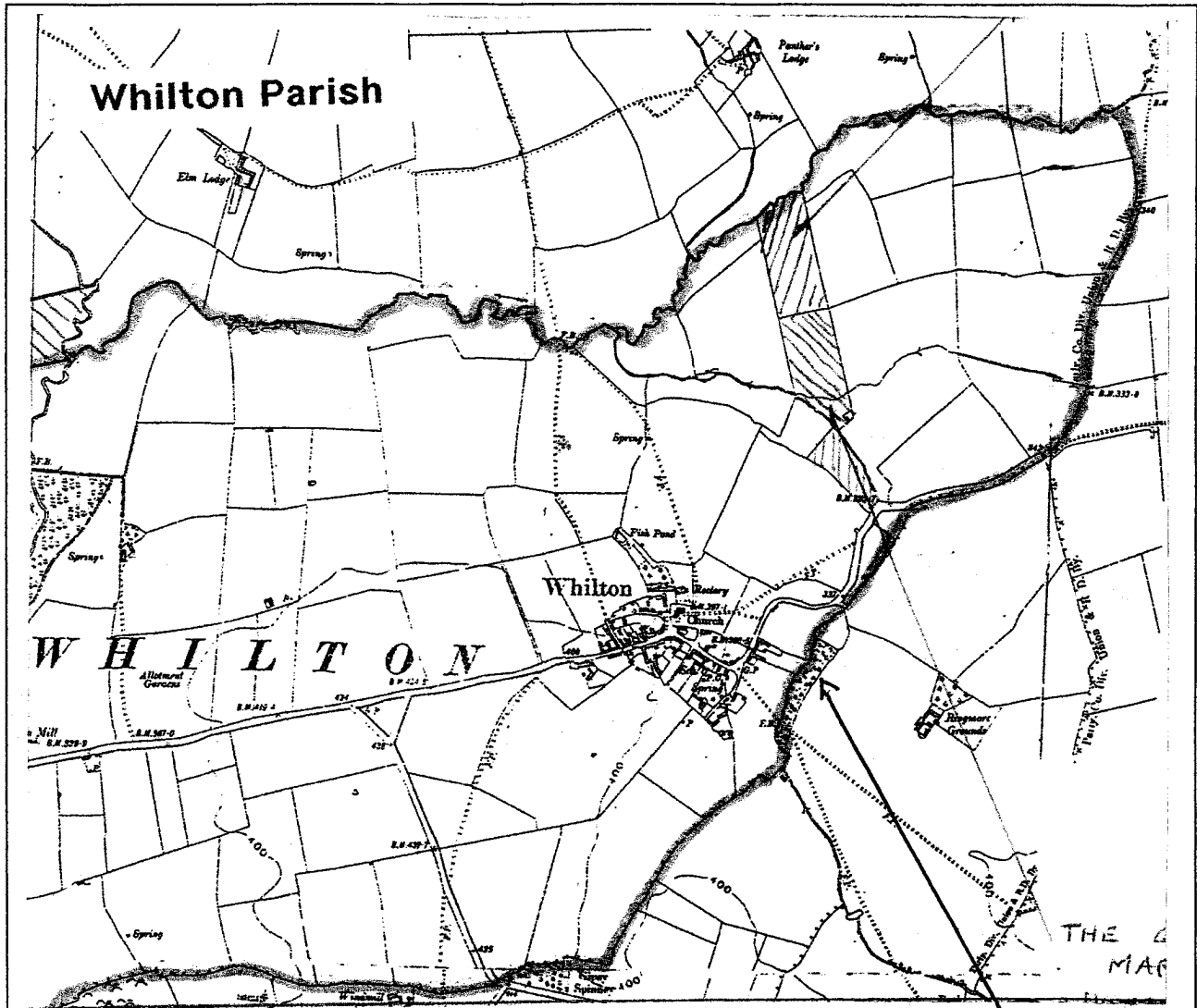


WHILTON NEWSLETTER

AUGUST & SEPTEMBER 2010



Boundary changes effective from 1st April 2010 now brings Roughmoor Spinney into Whilton Parish. Since the acquisition of the Spinney for the residents of Whilton Parish it unofficially has been considered within our boundary with the consent of Brockhall Parish.

SEE PAGE 17 FOR THE PARISH PICNIC BEING ARRANGED BY WHILTON VILLAGE HALL MANAGEMENT COMMITTEE

In this issue

- Parish News
- Church News
- Whilton Gardeners' Assoc.
- Whilton Local History Society.
- Neighbourhood Watch
- Tales from the Locks
- Spinney News
- Social Events



Roughmoor Spinney



The Working Party took place on Sunday 18th July 2010 at 2.00 pm. Eight volunteers worked hard tackling the re-erection of the noticeboard, clearing and piling wood debris in the picnic/play area.

The whole spinney was exceptionally overgrown with the current weather and clipping and pruning of encroaching brambles on the footpaths and overhanging branches was undertaken for safety measures.

The tasks that we were unable to deal with in the time were slashing of the Butter Burr on the footpaths and around the pond area and strimming in the picnic area.

We hope the noticeboard will suffer no further damage. This needs to be rubbed down and varnished before the winter, any volunteers? Contact no. 842968 – Derek Brown.

Whilton Spinney Management Committee



WHILTON GARDENERS' ASSOCIATION

REMINDER ABOUT TWO EVENTS IN AUGUST

The next meeting is on
Wednesday 4th August

when members of Woodford Halse GA will join us for visits to two Whilton Gardens and then refreshments in the garden of Phil and Jo Grant

Meet at the village green at 7pm

Please let us know whether you will be joining us by 1st August by emailing or phoning Ann



We have arranged a further Garden Visit on
Wednesday 11th August to
Julie Connall's Garden at Clipston

The Cost for this trip is £3.00 per head
Meet at the village green at 6.30pm

For this trip we need to arrange transport and book any cream teas in advance so please let us know if you wish to go by emailing Ann or phoning Olive

Ann Gilbert, Chair - 01327 843169, mob 07710225846
Olive Bardill-Tillett, Membership Sec. - mob 07921429228

DONALD WELCH – 11.4.1921 – 11.7.2010

A wonderful husband, father granddad and great granddad

He was born on 11th April 1921, second son of Florence and William Welch at Holly House, Whilton and moved to The Shop (now The Old Shop) when a small boy.

The shop served the village with general food items for many years until his mother became elderly and unable to continue.

His army life began in 1942 with Argyll & Sutherland Highlanders seeing action during World War II. Active service - D-Day (minus 2), France, Holland, Belgium and Germany until demobbed in 1945/46. He was also present during the release of prisoners from POW camps, painful memories he rarely talked about, only to say he could not believe humans could do such dreadful things.

He was employed by Stepnell Estates as a carpenter and joiner for 51 years. He loved his job and gardening, keeping two allotments and helping others with theirs, both manually and with valuable advice. He won many awards for his vegetables at the Village Fete and mowed the churchyard for a number of years.

After retiring he continued working with his son (a builder) until his health forced him to stop. Even with deteriorating health he would talk of how he loved and missed his work.

He was a wonderful and caring man, always with time to listen and an inspiration to his family and many others who were fortunate enough to know him

Alice and the family would like to express their gratitude for the kindness and messages of sympathy received during this sad time.

WHILTON MIDSUMMER SOCIAL LUNCH - Thursday 24TH June 2010

Once again this was well supported and 18 residents attended and enjoyed the three course meal followed by tea / coffee and mints.

Favourable comments were received by the small committee who arrange the meals and this was very much appreciated and makes their efforts worthwhile.

TUESDAY CHAT

This is still very successful and the next chat will be **Tuesday 21st September 2010 at 2.30 pm**

BRIGID FISHER

We were very sorry to hear of the death of Brigid in June 2010.

Although she moved away with her family to Wilby some 12 years ago, she still kept her contact with the village attending many of the social events.

During her time in the village she was involved in all the social activities with the WI, village hall and church. She was in fact one of the original collectors of the 200 Club.

Her interest was such she could be seen back in the village supporting social events even up to February this year when she attended the Whilton Social Lunch.

She was someone who was very interested in people and even 10 days prior to her death she was enquiring after the health of some of her old friends in the village.

She was a genuinely lovely person with a good sense of humour.

Our sympathy goes to Julian her husband and all her family in their sad loss.

Shirley & Derek Brown
Editors

Flore Village Fete

12th September 2010

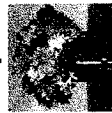
At this year's fete there will be a competition marquee. Everyone is invited to enter the various competition categories which are:



Design a miniature garden no bigger than A3/teatray size.



Build a scarecrow. Any design, any size as long as it can scare crows.



Garden flowers and greenery display using flowers from your own garden.



Vegetable & Fruit Monsters
- any size, any design

Best knitted character -any size and design

In each category there are two age groups: under 16, and 16 and over.

Prizes to the winners in each category.

Please see www.florefete.co.uk for further information or contact Richard Davies on 01327 341760.

Remember: you've got to be in it to win it!



FLORE SCOUT GROUP

Flore Scout Group have availability in all sections and so if there are any young people, boys and girls, from Flore or the surrounding villages that would like to join they would be most welcome.

Beavers age 6-8, Mondays 6pm-7pm contact Danielle Goddard on 07772 922725.

Cubs age 8-10, Tuesdays during term time- 6pm-7.30pm contact Richard Davies on (01327) 341760.

Scouts age 10-14, Wednesdays 7pm-9pm contact Jeremy Wilson on (01327) 878072.

Activities for the scouts in the next few months are Backwoods camp (cooking on an open fire and sleeping in bivouacs), dragon boat racing and Star Trek (an overnight hike with incidents). They also take part in the Brass Monkey camp in January, scout quiz, scout raft race and scout camp. Some scouts have recently taken part in a sailing course.

PART 2 of The ANNUAL PARISH MEETING report held on Monday 26th April 2010.

1. Report of the Footpaths Warden – Maurice Clements

Some time was spent with Mr Nick Wedgbrow (Rights of Way Officer) walking 3 footpaths at the end of 2009.

- Brockhall Boundary FL6
Deep step down from this fence Whilton side, a 2nd step would be placed down to this fence.
- Long Buckby Lane FL5
Loose top step, a repair is needed to secure this step.
- Churchyard/Brington Road
The path condition is good, no work is required.

• Report of Bell ringers – Janet Bowers

Practice continues on a Monday evening to which we are grateful for the support of ringers from Fawsley who attend on a regular basis. The 3 ringers who have been learning the art are progressing well, 2 are from Whilton and the other from Great Brington. During the summer holiday Miles Baker, just under 8 years old started to ring and is coming on very well. The bells have been inspected by the Daventry branch steward and 2 new ropes have been fitted by him. Anyone interested in learning to ring please come along on a Monday evening at 7.45pm.

• Report of Church Wardens- Janet Bowers

Although still in an interregnum for the whole of 2009 services continued in the same format with the help of retired priests and lay band members. We had no baptisms or weddings (the last wedding was 4 years ago). Two funerals were followed by burial in the churchyard.

We celebrated Fathers Day for the first time as it fell on a family service day.

Later in the year a pet blessing service donated the collection to the PDSA.

Organ, clock and fire extinguishers have had their annual maintenance and some repair work has taken place on the vestry roof timber.

We have to fund raise to help cover the costs of running the church ie. Paying bills and paying our share of the diocesan and benefice expenses.

Report of Neighbourhood Watch Co-ordinator – Ros Gardner

With the resignation of Peter Bennett due to ill health, Derek Brown offered to continue as Co-ordinator until a new volunteer could be found. I offered to help and actually took over and Neighbourhood Watch co-ordinator in August 2009. Derek continues as Deputy.

The Cascade system of telephone numbers for residents of the village was updated and circulated to all households in the village at the beginning of September. This system has been used on one occasion when a vehicle parked in Main Street had the rear window smashed and property stolen from the vehicle. Feedback from the Cascade system afterwards proved that it works well when we need to make residents aware of crime within our village. In February a Landrover was stolen from Main Street and was found some hours later off the M1 Motorway at Junction 23. However the owner informed me that although it was reported as soon as it was noticed missing, it took the Police two weeks to inform the owner that it had been found and they received a bill for towing the vehicle to the

Police pound and two weeks storage at £20 per day! The owners were told that it was due to a breakdown between the Highways Department who found the vehicle and the Police. A report of scrap metal being stolen from an industrial unit at Whilton Locks was also reported in February, and a garage was broken into at the Locks and a mountain bike stolen.

In February our long serving PCSO Lorraine Humfress was transferred to police the DIRFT and Kilsby area and a new PCSO Sarah Gray was appointed to our area. I met with Sarah in March and dates for the next three months surgeries have been fixed.

At our last surgery one resident expressed concern over speeding through the village and Sarah offered to look into the possibility of having a speed gun set up in the near future.

I would like to record my thanks to Derek Brown for the help and support he has given me over the last few months as I am new to this and his help and guidance has been invaluable.

Report of the Trustees of Whilton Parochial Charities – Keith Hiscock

This has proved to be a disappointing year in many respects. The value of the Charity's assets has risen mainly due to recovering share prices, but they are still some way from their 07/08 value. That said the main disappointment is the absence of applications for grants despite last years expectation that demands should properly rise as difficulties multiplied for residents. During the year therefore it has not been necessary for the two trustees to meet. Once the new Rector has settled in we will meet to again look at ways to encourage applications. Ideas on how to achieve this from residents as well as actual applications are very welcome. Our view remains that if the need is there it should be met, and if the funds are thereby extinguished then this should be accepted. So again we would remind people of our criteria and remain open to approaches from all our residents young or old.

These are to remind you:

- i) The Trustees are prepared to give up to £900 in grants in sums usually not exceeding £300 and limited to one application per financial year.
- ii) These would be given on receipt of a written application to the trustees, in confidence, given to one of the trustees explaining the need and difficulty in financially meeting it, or if preferred, an interview with one of the trustees which they would record.
- iii) The need may be for a piece of equipment or experience that anyone with reasonable means could be expected to acquire eg. A replacement mattress, TV licence, small house repair, musical instrument, evening class/skill giving course, playgroup fee, taxi fare to visit relative/friend in hospital, holiday break or significant school trip/DofE expedition that would fulfill potential. It could be help with fees for, or transport costs including insurance to further training.
- iv) Eligibility for an older or disabled person is defined as living mainly on a basic state pension or benefit, for a family living on an income half the national average wage, and for young people in their own right in a situation where it would not be expected a parent would fund the expense required. The payment may be requested to avoid consequences of a loan or the incurring of further debt.

Permanent notices remain on both the Village and Locks Notice Boards. A reminder will be published in the August issue of the Village Newsletter reminding those about to embark on university study or new work training of our existence and continuing to indicate safeguards for confidentiality of applicants. We will discuss any 'What If' situation before any name is mentioned if you or an agency approach one of us.

This fund remains for anyone normally resident in the Parish Boundaries and we would urge you to mention the possibility to those who should benefit from the forethought of previous wealthier generous parishioners.

We remind you that the three Trustees to be approached are Ann Gilbert at Langton Cottage and myself, Keith Hiscock, as the Parish Council nominee, at Langton House, and on arrival the newly appointed Rector Reverend Sue Kipling at Brington Rectory.

Accounts	2009-10	2008-9	2007-8
Income from Coif Shares	£179.37	£173.97	£168.42
Interest from Bank Account	nil	nil	nil
Payments Made	nil	£600	£300
Total Bank Balance as at 20.04.09	£409.62	£230.25	£658.28
Capital Account Share Value	£1483.61	£1188.22	£1748.92
Subsequent Share Purchases	£2643.41	£2099.28	£3116.12
Both at 12.04.10 value			
Total Value of assets	£4536.04	£3508.75	£5521.32

Report of Brington and Whilton Pre-school group – Jenny Holman

During this year our numbers have been lower at 10 children each day, although financially this is not good, we are able to get to know the children really well enabling them to develop to their full potential.

Throughout the year staff have continued to build on their professional development in Early Years which enables us to continue to offer children excellent care and education.

During July last year an OFSTED inspector visited us and the outcome of the inspection came out as a 'good'. Although we did not receive an 'outstanding' comments like "Individual needs and requirements are known and respected and excellent relationships have been formed between staff, children and their peers" and other comments of a similar nature were stated, which were pleasing.

We continue to work on different areas of the Foundation Stage and offer lots of interesting projects from Healthy Eating to Number Rhymes to name a few. We recently enjoyed a visit to the Emery's farm where we were fortunate to see some lambs being born and we make use of the village by taking walks and visiting the Spinney.

After reporting last year that we were looking into moving to Brington School, this is at the present time on hold as we consider options given to us by the school.

Notes from the Parish Council Meeting – Wednesday 14th July 2010.

- Northampton County Council was commended for having done a good job of repairing the potholes.
- Further quotes for the new village sign are being sought. It was agreed that the original design of a wheel be used.
- Enquiries had been made as to the point of an open Parish Meeting each year and what it has to do with the Parish Council. To clarify this, it is a legal requirement that a Parish Meeting is held annually between 1st April and 1st June and that it is run by the Parish Council.
- Unfortunately District Councillor Wendy Amos, County Councillor Steve Osborne and Police Community Support Officer Sarah Gray were unable to be at the meeting and no reports were available from them.
- There have been some changes to the Parish Boundary and a map showing this is now available.
- Further communication has taken place with Northampton County Council about the adoption of The Green by Whilton Parish Council. It looks as if this will now go ahead.
- Parking issues within Whilton were discussed and the advice from PCSO Sarah Gray is being sought.
- There was a discussion as to whether there was a need for a Poop Scoop bin in the village. It was felt that this was not necessary as dog owners, as they already do, clear up after their own dogs.
- It was reported that there is half an allotment available. It would be rent free this year as it needs clearing before it could be used.
- There is no further information available on Rose Cottage from Daventry District Council.

The next meeting is to be held on Wednesday 8th September 2010 at 7.30pm in the Village Hall. Items on the agenda include - information received by the council that the mercury lanterns are being phased out, a review of the assets of the Parish Council, administration costs, and an update on the drainage issues.

Alison Nicoll
Clerk to Whilton Parish Council

NORTHAMPTON COUNTY MOBILE LIBRARY SERVICE VISITS WHILTON EVERY THIRD TUESDAY AND STOPS OUTSIDE THE OLD PLOUGH, MAIN STREET AT 9.15 AM UNTIL 9.30 AM.

THE DATES FOR AUGUST ARE 10TH & 31ST AND SEPTEMBER IS 21ST

POSTAGE STAMPS

Used postage stamps are still being collected in the village by Trudy Haynes (please leave on the windowsill by the back door of the Old Plough). The charity supported is the Leprosy Mission.

Teresa Leadbetter, Wood View, also collects stamps for charity

PARKING IN WHILTON

We are all aware of the problems of parking in the village. They are not going to get any better however it might be useful to give a reminder so as to avoid any unpleasantness or legal action.

Parking should not cause an obstruction to road users and pedestrians. Also, you should not park within 10 metres from a junction and not opposite the junction

Mike Lewis, Chairman Whilton Parish Council

ST ANDREWS CHURCH SERVICES AUGUST 2010

1ST	10.00 AM	BENEFACTORY FAMILY COMMUNION AT <u>HOLDENBY</u>
8TH	11.00 AM	FAMILY SERVICE
15TH	9.15 AM	SUNG EUCHARIST
22ND	11.00 AM	HOLY COMMUNION AT <u>NORTON</u>
29TH	11.00 AM	SUNG EUCHARIST

CHURCH NEWS

Our new incumbent, the Revd Sue, is settling into the Spencer Benefice and endeavouring to get to know parishioners and connect them with their particular church. This is not an easy task especially when the same person is seen several times in different parishes. Revd Sue is very keen to get to know us all and to achieve this, intends visiting social events as often as possible as well as meeting us in church.

Here at St Andrew's on 11th July she baptised William Sidney Ryder, son of Angie and Mark from Daventry who befriended the late Sidney Chambers from Whilton.

On Sunday 25th July the Revd April Richards baptised Faye Louise Eyton-Jones daughter of Angela and Peter.

The Songs of Praise in June was well supported and the hymns were selected by parishioners. The Service was conducted by myself with Sam Dobbs, the Benefice Choir Master, playing the organ.

A CHANGE this year in the time of the HARVEST THANKSGIVING SERVICE on SUNDAY 26TH SEPTEMBER 2010. It will be at 4.30 pm followed by supper in the village hall at 6.00 pm and after this the auction of harvest gifts will take place.

The heating system in the church requires updating (it was becoming unreliable last winter) and to that end quotes have been obtained. We now have to send the proposal to the Diocese and obtain a faculty as it is a listed building. The late Frances Drake left in her will a Bequest to the church and it is proposed to have this work done in her memory if the faculty is granted.

**J Bowers
Church warden**

Neighbourhood Watch Report

Apologies for all those people hoping to have an insight into the Police CCTV van due to be in the village on Saturday 24th July. Unfortunately the van was unavailable at the last minute therefore our PSCO Sarah Gray toured the village on foot hoping to speak to as many members of our community as possible. It is hoped that we can arrange a new date for the van to visit the village.

We have had a report of theft from commercial premises within the parish on the night of 12th July.

Dates for the next Street Surgeries are:

Thursday 12th August 6 -7 p.m.

Tuesday 14th September 3.30 – 4.30 p.m.

Many residents will be going on holiday during the next few weeks. Please ensure that valuables are not left on display and that you ask someone to check your premises while you are away.

The usual numbers to contact if you see or hear anything suspicious are Northamptonshire Police Switchboard Tel: 03000 111 222 or the dedicated Neighbourhood Watch 01604 432436 or 999 in case of an emergency. Alternatively you can call Crimestoppers anonymously on 0800 555 111.

Ros Gardner NHW Co-ordinator

Northamptonshire County Council Riverside House | Riverside Way | Northampton NN1 5NX

t: 01604 364436f: 01604 654433 e: pdonaldson@northamptonshire.gov.uk

w: www.reducingroadcasualties.com | www.bikekraft.co.uk | www.2fast2soon.com

Northamptonshire Casualty Reduction Partnership has teamed up with BSM to provide 120 FREE Pass Plus courses worth £180 each to young people living in the South Northants/ Daventry area as part of a Department for Transport funded trial project aimed at reducing road casualties in rural areas.

Pass Plus consists of six modules about driving in different conditions aimed at improving the skill and knowledge of newly qualified young drivers. There is no test at the end, but if successfully completed, the student will be issued with a certificate and eligible for insurance discounts with some insurers.

Applicants must live in the NN11, NN12, NN13, OX17 or MK19 areas, be aged 17 -25 years old, have passed their driving test within the last 18 months and hold a current valid UK driving licence.

An application form or further information can be obtained by emailing: passplus@northamptonshire.gov.uk



WHILTON LOCAL HISTORY SOCIETY

GUESS OR REMEMBER

The July meeting was well attended and members had the opportunity to pour over three dozen drawings, photos and paintings of people, places and objects from Whilton. This caused some interest and discussion, as parts of the parish have changed so much. There was a watercolour of the original Whilton Lodge, before it was rebuilt in 1867, and a photo of the cottage in which Harold Haynes was born, which has been demolished. The photo of the road leading from the Locks towards Whilton Hill was also unrecognisable to most, as the Motorway has cut through the rural scene pictured in 1957.

Three women of Whilton

The formidable lady on the right cannot be identified for certain, but she is probably Ann Emery, the daughter of John Judkin of Roughmoor, born about 1810. She was the wife of James Emery. The 1861 census records that he was farming 400 acres and employing nine men and five boys.

Long dresses such as that shown cannot have been very practical for everyday life. On Sunday mornings the Emery yard was brushed down so that the ladies could walk to church without getting mud on their crinolines.



James and Ann had nine children, and the youngest daughter was Ruth, born about 1850. Ruth Emery, pictured left, married a farmer and cattle dealer, James Cross of Braunston, in 1873.

They later farmed in Whilton too. They had no children of their own, but they brought up Will Emery, Gordon's grandfather.

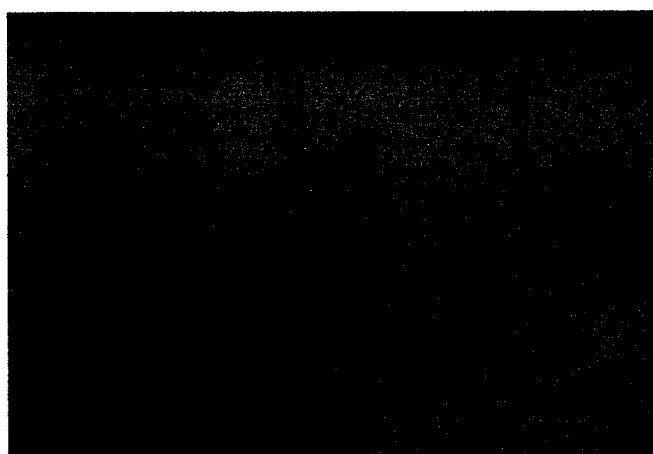
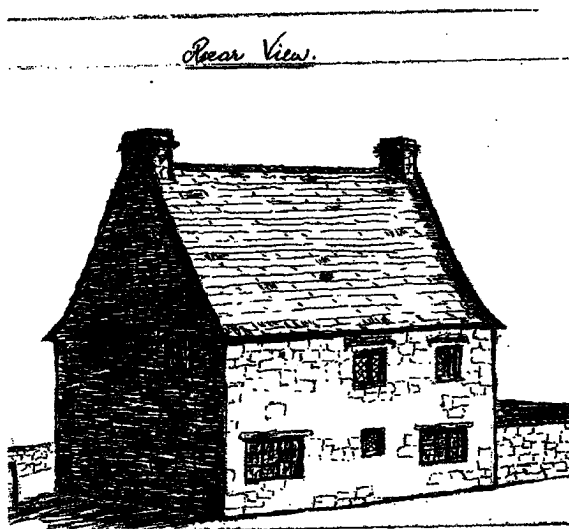


No one can now remember Miss Dorothy Dyer, pictured here in about 1920. She was born in Bethnall Green, the daughter of a West Country couple, James and Dora Dyer, who were schoolmaster and mistress of the National School here from 1869. Their daughter taught with them and later lived in Rose Cottage, which she rented from Mrs Coates, Grace Tooley's mother.

After his retirement, James Dyer ran the Post Office for a short while until his death in 1896. Miss Dyer took over and became Post Mistress. She was also the church organist and had a reputation for being able to control the behaviour of the choir boys.

Among the work of Whilton artists was an ink sketch of the Manor House, labelling the wall which faces the road as the rear, and drawn in 1975. (Right)

There was also a pencil sketch of Field View, with the washing on the line. This drawing was also completed in 1975, when Will and Freda Adams lived in the house. (Below)



The next meeting will be in the Village Hall on Thursday, 16th September, when it is hoped to launch the new history of Whilton: "Living in the Gap." There will be details on the notice board and the website.

All will be welcome.

Anthea Hiscock

A note for those who attended: the painted stone arm, with a hand holding a plucked rose, is part of the crest of the Rose family, and can be found on the west wall of the north aisle in the church below the memorial to Rev William Lucas Holden Rose.

Tales of the Locks—No 8

by Tom Price

Dropping out and falling in

When we decided to flee from townie life 35 years ago, the isolated British Waterways cottage at Whilton Locks seemed a good place for dropping out – especially as the first six months of the lease would be rent free.

We undertook to repair damage done by vandals while it was standing tenantless over the previous 18 months. For me it was a return to the days when I lived by the canal as a small child in the Black Country.

The Grand Union flows a few yards from our garden gate. On the other side, across a narrow field, is the M1 motorway. We kid ourselves that its drone is like a vast echoing ocean.

I sometimes sit for an hour marvelling at the never-ending parade of cars and the trucks with strange logos from all over Europe and beyond. The nearby canal is also busy, with boaters from many countries in holiday mood. Most summers I go in for a ritual dip.

The isolation is useful. We can play music as loud as we like on various instruments late into the night. Another asset of the cottage is the garden's fertility, built up by previous tenants, commercial boating folk who always grew their own. As part of our dropping-out experience we learned to grow vegetables and keep pigs, goats, horses, rabbits, hens, geese and ferrets.

We received expert horticultural advice from Penny's dad Richard, a former professional gardener who retired into a cottage in Norton parish not far away. Penny's chestnut gelding, Buttons, was schooled as a colt by Jack Harrison from Brockhall, a legendary horse-coper. Our nanny goat's amazingly footsure kids danced along the top of our canalside hedge. My dad rebuilt the old sty and we installed our beautiful Large White pig Myrtle, for whom a boar was provided by Phyllida and Stan Raper, whose little Dodford farmhouse is now a conference and wedding venue.

One day, on the way to the boar along the towpath that is our only access to the main road, Myrtle was deliberately startled by a mischievous farmer friend and did a mighty belly-flop into the canal. Despite her huge bulk and dainty feet she powered along like a speedboat for a good forty yards before I managed to coax her to the bank and help her out by hauling on her ears.

In due course she produced a splendid litter of eight and Phyllida kindly

taught me how to castrate the males with my penknife.

We were able to survive on a small income which was mainly provided by various journalistic jobs. One involved sub-editing a journal for the League Against Cruel Sports, and I think this connection resulted in me being contacted by a group of animal liberationists.

Late one night I received a mysterious telephone call from an anonymous person who said: "Is there some spare room in your hen-pen? If so, we would like to give you some free hens." Next morning I discovered that I had twenty new hens – if you could call them that. They were horrific, like nothing we had ever seen...white combs, stripped of feathers, their claws inches too long. Two had died in the night.

It turned out that they had been "rescued" during a raid on a battery run by a group of nuns near Daventry. I was so incensed by their condition that I told a Sunday newspaper which came and took pictures for a shock-horror story. The reporter said that when he asked the Mother Superior how hens could be treated like that, she explained: "They have no souls."

Our cockerel looked after the freed birds and taught them how to scratch and perch.

Later we gave up keeping hens for some years after our flocks were ravaged by foxes and mink. But recently we began again, obtaining new hens for £3 apiece from a sanctuary in Raunds. Having passed their laying peak, they had been acquired the previous day from a commercial battery and I was pleased to note that they were in good condition – thanks, possibly, to regulations adopted because of the efforts of those illegal campaigners years ago.

The nearby motorway has almost daily dramas, and we now hardly notice the sirens of police and rescue services. Very late one night, however, we were visited by a policeman who ordered us to evacuate immediately because of a poisonous cloud escaping from a crashed chemical tanker.

Even more exciting was an afternoon when our door was knocked by a young black man wearing a sweaty string vest who had climbed over the motorway hedge to seek our help.

He said his car had broken down, and asked to use our phone to get his friend in Manchester to fetch him. We entertained

him for several hours, and got him some fish and chips – he was famished – from Buckby. He was extremely friendly and was delighted to dandle our baby son Noah (now 18) on his knee. Eventually I drove him to the rear of the service area at Watford Gap, where he was hurriedly picked up by several men in a big black limousine.

A few days later we opened the Gusher to find a large picture of our visitor, with the news that he was a violent robber who had escaped from a police van moving him with others to a different prison. We discovered that while he was in our living-room dozens of police were scouring the area and local radio messages warned people to avoid him and his fellow convicts at all costs.

My wife rang the police and apologised for unknowingly harbouring a criminal, whom she described as “an extremely nice young man.” They were not amused.

Our stretch of the canal has been the scene of several dramas. Shortly after the Bannaventa was opened we celebrated at the pub on a November evening with boating friends from north London and finally headed homewards at a late hour, singing “Keep right on to the end of the road.”

In the darkness one London lad, Peter Pallister, walked straight into the canal at its deepest point at the bottom lock, vanishing from sight for several seconds.

Luckily he had a good head of blond hair, which became faintly visible in the pale moonlight when he at last surfaced. I grabbed him by it and we hauled him out. He was almost as heavy as Myrtle.

Since then we have always joked to potential visitors: “Do drop in some time.”

Tom Price

LOCAL SERVICES OF WHICH YOU MAY NOT BE AWARE

CLOVERLEA CATTERY

Luxury Cattery

The cattery located in Flore offers the most modern cattery facility available within a beautiful secluded rural setting.

Your cat's health, safety and comfort is the priority and the light and spacious heated chalets promote relaxation and well-being.

Call Christine or David on **01327 341475**
Or just go along and take a look around

Book early for peak periods to avoid disappointment!

Cloverlea, Brington Road, Flore, Northants, NN11 4BQ

www.cloverleacattery.co.uk

WHILTON LOCKS CHANDLERY

The Chandlery supports our Village Hall 200 Club and if you find you have run out of any items, this is our equivalent of the corner shop and could save you travelling a greater distance.

BRINGTON & WHILTON PRE-SCHOOL

This successful Pre-School meets three mornings a week in Whilton Village Hall.

If you have or know of any child aged 2yrs 6mths to rising 5yrs who would benefit from attending a caring setting, please do not hesitate to contact **Jenny Holman 01604 770083 or 07948724415.**

WHILTON CHARITIES:

ARE YOU IN NEED OF SOME FINANCIAL ASSISTANCE?

A REMINDER: The charities exist to provide basic requirements or relieve debt or stop the incursion of it in circumstances where it will assist those with insufficient resources. Some will be starting new training or university courses this autumn and may wish to consider applying. Others may be seriously affected in various ways, by the economic downturn, or by rising prices for commodities, lighting, or heating fuel while trying to manage on a fixed income. If either you or someone known to you has one of these concerns, please contact the Rector Sue Kipling, Ann Gilbert or me (Keith Hiscock) to see if the Charities can be of some help. I reprint an extract from the Annual Report as a reminder of our existence and the grounds on which we would want to help.

This increased response in discussing possible grants or making applications last year was disappointingly not experienced this last year. This has been despite the larger grant available and use of a much wider definition of eligibility now being used.

These are to remind you:

- i) The Trustees are prepared to give up to £900 in grants in sums usually not exceeding £300 and limited to one application per financial year.
- ii) These would be given on receipt of a written application to the trustees, in confidence, given to one of the trustees explaining the need and difficulty in financially meeting it, or if preferred, an interview with one of the trustees which they would record.
- iii) The need may be for a piece of equipment or experience that anyone with reasonable means could be expected to acquire e.g. a replacement mattress, TV licence, small house repair, musical instrument, evening class/skill giving course, playgroup fee, taxi fare to visit relative/friend in hospital, holiday break or significant school trip/D of E expedition that would fulfil potential. It could be to help with fees for, or transport costs including insurance to, further training.
- iv) Eligibility for an older or disabled person is defined as living mainly on a basic state pension or benefit, for a family living on an income half the national average wage, and for young people in their own right in a situation where it would not be expected a parent would fund the expense required. The payment may be requested to avoid consequences of a loan or the incurring of further debt.

Permanent notices remain on both the Village and Locks Notice Boards. This reminder is published in the August issue of the Village Newsletter to remind those about to embark on university study or new work training of our existence, and to continue to indicate there are safeguards for the confidentiality of applicants. We will also discuss any 'What If' situation before any name is mentioned, if you or an agency approach one of us either on your own or another's behalf.

This fund remains for anyone normally resident in the Parish boundaries and we would urge you to mention the possibility to those who should benefit from the forethought of previous wealthier generous parishioners.

Keith Hiscock

WHILTON VILLAGE HALL

WHILTON VILLAGE HALL 200 CLUB PRIZES

APRIL 2010

1 st Prize	053	D Day	£45
2 nd Prize	153	S Bennett	£25

MAY 2010

1 st Prize	080	T Price	£45
2 nd Prize	085	B Melling	£25

JUNE 2010

1 st Prize	029	M Wheeler	£45
2 nd Prize	057	J Bunce	£25

JULY 2010

1 st Prize	109	G Martin	£45
2 nd Prize	074	T Leadbetter	£25

Congratulations to All

PARISH PICNIC

This proposed social event will take place on **4th September 2010** at **4.00pm** in the **Spinney** provided there is sufficient interest and we are not experiencing adverse weather conditions.

As facilities are not available please bring your own food and drink. A Treasure Hunt will be held within the confines of the spinney with a prize for the most correct answers or draw from a hat if more than one correct solution.

If you are interested in joining in this event, please complete the slip below and return to myself, Mike Lewis.

✍

Contact Name.....Contact No.....

Number of people coming.....

✍

Please return slip to Mike Lewis, 3, Whilton Locks Cottages by 31st August 2010

SUMMARY OF EVENTS

Wed	3rd	Aug	7.30 pm	Meet on village green at 7.30pm if viewing the open gardens
Tues	10th	Aug	9.15 am	Library van in village outside the Old Plough
Thurs	12 th	Aug	6 -7 pm	Police surgery in village hall
Wed	11th	Aug	6.30 pm	WGA outing to Julie Connall 's Garden at Clipston
Tues	31 st	Aug	9.15 am	Library van in village outside the Old Plough
Wed	8 th	Sept	7.30 pm	Parish Council Meeting in Village Hall
Tues	14th	Sept	3.30- 4.30 pm	Police surgery in village hall
Thurs	16th	Sept	7.30 pm	Whilton Local History Society in village hall
Tues	21 st	Sept	9.15 am	Library van in village outside the Old Plough
Fri	24th	Sept	2.30 pm	Tuesday Chat DEADLINE FOR OCT/NOV NEWSLETTER Please hand in your contribution before this date or otherwise we cannot guarantee it will be included in the next edition.
Sun	26 th	Sept	4.30 pm	Harvest Thanksgiving Service in St Andrew's Church followed by supper in village hall at 6.00 pm

The Whilton Newsletter is published bi-monthly and circulated free to every household within the parish boundary. The costs are met by the Parish Council.

The Editors are Derek & Shirley Brown, Cherry Orton, Main Street.
Telephone – 01327 842968. Email: d.brown253@btinternet.com

Please supply a disk or memory card with your contribution if not email us so that we can manipulate the text to fit as necessary. If you do not have a PC or typewriter the editors will type the articles as they have always done in the past.

Articles of local interest, poems, recipes puzzles or drawings will always be considered for inclusion in the Newsletter.

LIVING IN THE GAP.
THE STORY OF WHILTON AND ITS THOUSAND ACRES
1000 – 2000 A.D.

This new history of Whilton with over 60 illustrations will be available from mid September at £12.99 per book. The nineteen chapters trace life in this parish from the end of Saxon times to the late twentieth century. The book includes the story of the village on the hill, the Locks and Whilton Lodge.

If you would like to reserve a copy in advance, please complete the form below and deliver to me at Langton House.

It is expected the history will be available at the Whilton Local History Society meeting on 16th September, when I will be happy to sign copies. Payment should be made on collection and may be in cash or by cheque made payable to Langton House Associates.

Anthea Hiscock



Order form:

“Living in the Gap.
The story of Whilton and its thousand acres.
1000 – 2000 A.D.”

To:
Anthea Hiscock
Langton House Associates
Langton House
Whilton
NN11 2NN

Name.....

Address.....

Please reserve copies of “*Living in the Gap*” at a cost of £12.99 per volume.