

# WHILTON NEWSLETTER



DECEMBER-FEBRUARY  
DECEMBER-FEBRUARY

2014-2015

# Letter from the Editors

As another year comes to a close we often find ourselves reflecting back over the previous 12 months recalling incidents and events which have shaped 2014. On a national, and indeed international level the year has seen numerous activities marking a centenary since the outbreak of WW1.

Locally, we also have remembered how The Great War impacted on our village's residents of the time, with this issue featuring an article on Captain Henry Reynolds from Whilton, who was awarded the Victoria Cross for his actions during the conflict.

Now we commence the colder, darker days of winter thoughts turn to the festive season. Whilst we may be preparing our gardens for the frost, the church will be bringing the outdoors inside with its annual Christmas Tree Festival. It is truly delightful to see the wonderful creations our villagers and local organisations design.

As a reminder of the warmer months we also have a unique contribution on the art of vine growing, a skill perfected by one of our local residents; to whom we are extremely grateful for his words of wisdom.

Alongside all of this we begin to look forward to the New Year and all that it may bring, with details of forthcoming activities and events.

Wishing all of our readers a very merry Christmas and a happy New Year.

The Editors

\*\*\*\*\*



This family was pictured in Manor Lane two years ago.

Will they be visiting again in 2015?

Winter front cover design:  
Noah Price

## WHILTON PARISH COUNCIL

From the Clerk's Pen



People were so busy enjoying the lovely warm summer that they did not seem to bother much with building alterations, so very few planning applications were dealt with in the last quarter.

Budgets are high on the agenda this quarter, not only the Parish Council's, but also those of the District and County Councils. Indications are that they will have to make savings which can only come from cuts in service provision and/or staff redundancies. The Parish Council's budget is also strained this year as we may again have to absorb some of the service cuts, upgrade the remaining 3 lamps, renew the 3-year service agreement for the clock and renegotiate the allotment lease with associated legal and registration costs, to name but a few.

We would be most grateful to hear from any resident solicitors who would be willing to assist the Parish Council in renegotiating the allotment lease, as our previous solicitor has moved away from the village. If you can help, please contact me at [clerk@whiltonpc.co.uk](mailto:clerk@whiltonpc.co.uk).

As you will know from talks and articles by Anthea Hiscock of Whilton's History Society, Whilton is the proud birthplace of Henry Reynold's who was both a Military and Victoria Cross recipient in WWI. To commemorate his achievements, Whilton will host a commemorative event in September 2017 which we hope will be attended by representatives from Daventry District Council, his former regiment as well as his descendants. The Parish Council is collaborating with the History Society to arrange a ceremony to honour his achievements and the sacrifices he made.

### Daventry District Council (DDC) Requests

Report all littering, dog mess, fly-tipping and fly posting to DDC by e-mail or online via the website <http://www.daventrydc.gov.uk/online/#> - click on the relevant subject under 'Report something' and they will act promptly to deal with it. This service is available 24-7 and provides a record of the times and locations of any hotspots, so that they can send officers to patrol to catch people in the act.

DDC has issued an appeal for donations for Daventry Food Bank's (DFB) 'Christmas Tree Hampers' initiative as well as donations of warm clothing. Professional organisations and agencies are working with DFB to identify, within their respective client bases, those individuals or families that are in real need or suffering hardship whether due to bereavement, homelessness, redundancy, health issues, debt etc. A list of food items needed is also available on both the notice board and website. All donations can be dropped off at DDC's front reception desk until Monday 15th December.

Lastly, you can now find out if a car parked on a street near you for days on end is actually taxed and has a current M.O.T. certificate. This link <https://www.vehicleenquiry.service.gov.uk/> allows anyone to check as many cars as they want. It will tell you until when the vehicle is taxed and when the M.O.T. expires. If the tax has expired by two months or more you can contact ELVIS (End of Life Vehicle Impound Scheme) by phoning 101 - when it asks for the department say Elvis and it will connect you. DDC will then arrange for it to be removed through the Council's Environmental Protection team.

Erica Fothergill

Parish Clerk: e-mail: [clerk@whiltonpc.co.uk](mailto:clerk@whiltonpc.co.uk)

\*\*\*\*\*



## CITIZENS ADVICE DAVENTRY & DISTRICT

Free, confidential, impartial and independent advice and information on a wide range of subjects including: DEBT, BENEFITS, EMPLOYMENT, HOUSING, FAMILY ISSUES, DISABILITY, CONSUMER, etc

Whoever you are; whatever the problem.....

10am-3pm, Mon, Tues, Wed, Fri. No appointment needed.

**The Abbey, Market Square, Daventry, NN11 4XG**

Adviceline: 03444 88 9629

Benefits & Disability advice: 01327 701646 (mornings)

Email advice via website: [www.daventrycab.org.uk](http://www.daventrycab.org.uk)

A full range of information is also available at: [www.adviceguide.org.uk](http://www.adviceguide.org.uk)

\*\*\*\*\*

## NORTHAMPTONSHIRE ASSOCIATION FOR THE BLIND

As Christmas approaches it is always a thought provoking time to find the right gift for that special person and more difficult if the intended recipient is blind or suffering from impaired sight. The NAB carry a full range of suitable Christmas presents that can be given to friends with sight problems and a full selection is carried on our **NEW Mobile Unit** and at our sight centres in Northampton and Kettering. If it is not in stock it can be ordered and be available well in time for Christmas.

***Gift prices vary to meet all budgets and won't be found on the High Street.*** If you would like to obtain a catalogue or place an order, get in touch with us:  
**[www.nab.org.uk](http://www.nab.org.uk) ; helpline: 01604719193**

## WHILTON VILLAGE HALL 200 CLUB 2014/15

### AUG

1 <sup>ST</sup> PRIZE	K Bowers	150	£45
2 <sup>ND</sup> PRIZE	A Wood	117	£25

### SEPT

1 <sup>ST</sup> PRIZE	S Thomas	029	£45
2 <sup>ND</sup> PRIZE	M Emery	018	£25

### OCT

1 <sup>ST</sup> PRIZE	M Clements	201	£45
2 <sup>ND</sup> PRIZE	T Treacy	082	£25

### NOV

1 <sup>ST</sup> PRIZE	J Baker	058	£45
2 <sup>ND</sup> PRIZE	J Huxley	137	£25

**Congratulations to all the prize winners**



### TUESDAY CHAT

Tuesday Chats took place on 23<sup>rd</sup> September and 21<sup>st</sup> October at 2.30pm in the village hall. They were well attended and we all enjoyed homemade cakes, tea and lots of chat.

We were joined on both occasions by our youngest visitor yet - Hugo Thomas who kindly brought his mother!

**OUR NEXT TUESDAY CHAT WILL BE ON 16<sup>TH</sup> DECEMBER AT 2.30 PM**

***PLEASE COME AND JOIN US IN THE VILLAGE HALL FOR THIS CHRISTMAS MEETING, YOU ARE VERY WELCOME.***

*There is a small charge of £1.50 to cover expenses*

**Other Tuesday Chats will be on 20<sup>th</sup> January and 24th February 2015.**

### SOCIAL LUNCH, TUESDAY, 25<sup>TH</sup> NOVEMBER 2014

This took place in the village hall at 1.00 pm and was very enjoyable.

We had three new visitors and there was a lovely social atmosphere, helped of course by the usual tasty food. The main course was a delicious venison sausage casserole with broccoli, jacket potatoes and a vegetable bake. As usual seconds were taken. Three puddings were on offer for dessert: trifle, apple and pear tart and treacle pudding. These were well accepted and again seconds were taken.

Soft drinks were served before and during the meal and coffee/tea and mints afterwards.

## The Whilton Warblers look forward to Christmas

Summer is over ☹️

Choir practice has resumed 😊

Following our first choir practice of the Autumn term we celebrated the Whilton Warblers' first birthday with a little party complete with cake.



*The choir was established in 2013 with a grant from Northamptonshire Community Foundation (NCF). Over the summer we were surprised and delighted to hear that we had been nominated for an NCF award in the "Arts, Culture and Heritage" category. Whilst we didn't win it wasn't too disappointing as the other nominees were amazing and the winners (Rockin' Roadrunners - a night club for adults with disabilities offering a safe, fun event with access to live music, DJs and performers) were in a different league altogether.*

We now have set term times, a regular members' newsletter and we've set a date for our Christmas concert. The concert will be on the evening of Friday 12th December in St. Andrew's church (see the poster in this newsletter for more details). Having the concert date now enables us to focus on the content – as before it will be a mix of traditional and contemporary songs, some we've performed before and some that are new to us, and of course there will be an opportunity for the audience to join in.

Our "Bring a Friend" evening was well supported and good fun for all. It also resulted in a new choir member, better still she's an Alto so whilst we're still outnumbered by the Sopranos we've closed the gap slightly. It's also good to have five regular male singers again – their voices add such a lovely tone to the songs. Don't forget, new members are always welcome, there is no audition or joining criteria – you don't need to be able to read music or live in Whilton. If you do decide to join the cost is £3.50 per week (payable termly) with concessions for people in full time education.

It would be lovely to see you - yes, YOU - at our Christmas concert and even lovelier to welcome you to the choir: practice is every Tuesday in the church, just turn up between 7.00 and 7.30pm or call Linda on 01327 842034 for more details.



Whilton  
Warblers  
present

An Evening of Musical  
Entertainment

Friday 12<sup>th</sup> December

7.30pm

St. Andrew's Church

Whilton

Tickets: £4.00 (children free)

Contact Linda on 01327 842034

## NEWS FROM ST ANDREWS



Looking back we have had an interesting couple of months.

We held our Harvest Festival Supper in September in the Village Hall. This year we repeated the hot buffet and again we were fortunate to have so many good cooks to help with the food. Anthea Hiscock gave us a really interesting account of bygone days in Whilton based upon personal memories which really showed how much life in the village has changed in two generations. I think I can speak for everyone who attended that we had a really good evening.



We are now turning thoughts to Christmas. We have a busy programme which will make full use of the church and we do hope that you will be able to take part. We are holding a Christmas Tree Festival on the weekend of 20th and 21<sup>st</sup> December. Village organisations will be able to decorate a tree as part of our Christmas celebrations. We plan to hold a coffee morning on the Saturday to give villagers a first glimpse of the trees.

The focal point will be our Carol Service on Sunday 21<sup>st</sup> at 6.00 which we are combining with Christingle for our young people. Everyone is invited to attend. We will be serving festive fizz and mince pies after the service. I do hope that you will be able to join us and get your Christmas week off to a great start.

Our Christmas Day service this year will be at 9.15 a.m. I know that Christmas morning can be busy but I hope that you will find time to celebrate with us on Christmas Day.

We are also arranging to light the Church in the run up to the Festive Season. I always think it brightens up the village during these dark nights. Full details are published elsewhere but if you would like to take part please let me know.

The church is a key part of our village and we are always keen to discuss new ideas for events or use of the building. I can be contacted on 843380 or by email [Jbrierley1@aol.com](mailto:Jbrierley1@aol.com).

Jon Brierley, 7 Langton Rise





## LETTER FROM THE RECTORY

Dear Everyone,

Christmas is approaching! Will we be ready? Will everything go just as we want it to? Will our loved ones be pleased with the surprises we've planned for them?

There are those, of course, who are not looking forward to Christmas; perhaps there will be family missing from the celebrations this year; perhaps there will be memories of past Christmases when things went wrong. But for all of us, whether we anticipate Christmas with joy or trepidation, there is a message of hope that a new born baby Jesus will bring peace to the world. Violence may continue, as it has done for two thousand years, but we can find peace and joy inside ourselves that comes from God, a God who retained his Godliness and yet was human. He knows about our joys and our anxieties. He walks beside us. I wish you his peace this Christmas!

Happy Christmas!

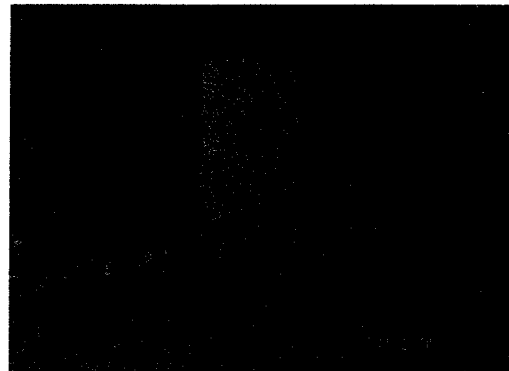
Sue

Sue Kipling [suekipling@btinternet.com]

## ST ANDREWS 2014 CHRISTMAS LIGHTS

This year we are once again giving you the opportunity to light the Church and make it a focal point of the village during the Christmas period. Cost is just £10 a night.

To reserve your special day or to select a date, please contact Jon Brierley (843380) or [Jbrierley1@aol.com](mailto:Jbrierley1@aol.com)



11 December	JON AND HELEN BRIERLEY	18 December		28 December	
12		19		29	
13		20		30	
14		21		31	
15		22		1 January	
16		23		2	
17		24		3	
18		25		4	
19		26		5	
20		27		6	

## WHILTON LOCAL HISTORY SOCIETY

### THE MAKING OF A LOCAL HERO

We met on 12<sup>th</sup> September 2014 to hear about the early life of Henry (Harry) Reynolds, the ninth child of Thomas Henry and Tryphena Reynolds, born in 1879 in the farmhouse where the carpet shop now stands. Harry was educated at Daventry Grammar School. He excelled on the sports field and captained the school football. In the late 1890s Major Cecil Bingham had become the owner of Whilton Lodge, the Reynolds' landlord. When the Major came home from the Boer War, this was the occasion for Harry to be involved along with about a thousand others in a great show of patriotism. Harry was in the mounted escort formed mainly of Pytchley riders proceeding from Long Buckby Station to East Haddon Hall, with bells ringing and flags waving.

As a young man Harry shared many of his father's interests, enjoying fishing, shooting and the Pytchley Hunt. Harry's favourite mare was "Daintree", with whom he won a number of prizes during 1904. Harry had her photograph on the wall in his home.

Harry joined the new Northamptonshire Imperial Yeomanry, attending their first camp in Althorp in 1902. Camping in bell tents, men were occupied with drill, cricket matches, parades and local manoeuvres. Like his father Harry revelled in this kind of pageantry and patriotism. At the Yeomanry's first Annual Sports Day his younger brother Ned was second, and Harry third in the Rapid Firing Race, suggesting some brotherly rivalry. Meanwhile "the Regimental Band played a delightful selection of music during the afternoon, and at the close of the sports the Countess Spencer graciously distributed the prizes."

Harry began to be promoted, gaining experiences of leading and supporting his peers in sometimes difficult tasks. In the 1905 camp there was a fatality after a young man galloped into a tree. It was Harry who was brought as a witness at the inquest, described as a farmer of Whilton Locks and Sergeant in the Northants Imperial Yeomanry.

Following the death of his mother in 1901 and his father in 1903 Harry continued to run the farm and his father's coal business in partnership with Ned. In 1905 he married Gwennie Jones, a farmer's daughter from East Haddon Grange. The wedding was in East Haddon church decorated with flowers from Mrs Guthrie of East Haddon Hall. Mrs Guthrie was sister of Colonel Bingham of Whilton Lodge. As the wedding party left the village children strewed the path with flowers.



After their honeymoon in Brighton Harry and Gwennie returned to life at the Whilton Locks farmhouse. Their son, Thomas Henry William, was born in September 1906. In November 1907 their daughter was born in the old house and named Gwendolen Tryphena Alice. Sometime after this Harry spent a while running the coal business with Ned, and then moved on to helping his father in law.

Married with two children, he had left the Yeomanry. However, he chose to rejoin at the outbreak of war, but soon after received a commission in the Royal Scots. He embarked for France in August 1916. He was then 37 and was about to become the father of a third child, Velia Rosemary, born at East Haddon on 29<sup>th</sup> September 1916. The family spent the war years at East Haddon Grange.

Harry fought in the Battle of the Somme in 1916, where he was slightly wounded. Early April 1917 was unseasonably cold and miserable in northern France. There was sleet and snow on Easter Monday 9<sup>th</sup> April, when the battle of Arras began, with men exhausted and frozen. Harry's part in the assault led to his award of the Military Cross, "for a series of actions on 12<sup>th</sup> April 1917, which meant being under artillery, machine-gun and rifle fire for a considerable time." He had shown: "conspicuous gallantry and devotion to duty in reorganising his company when all the officers became casualties, and leading it to the attack with great courage and coolness. His fine example had a most steadying effect upon the men, who had been badly shaken."

Harry and his Battalion, part of the 9<sup>th</sup> Scottish Division, were in Flanders by 20<sup>th</sup> September, the beginning of the Battle of the Menin Road, which was part of the larger and longer 3<sup>rd</sup> Battle of Ypres and/or the Battle of Passchendaele. The Germans had prepared a heavy concentration of concrete "pill-box" fortresses, part of a trench system, forming an interlocking line of defence with other pillboxes by providing covering fire to each other. Captain Harry Reynolds was now in command of A Company, whose aim was to seize the blockhouse called A1 and the strongpoint, Potsdam. Preparations began in the early hours, in pouring rain.

One of Harry's men, Corporal George Soutar described part of what happened that day: "Captain Reynolds is absolutely fearless. But for him, we would have been beaten back that day... It became necessary to silence the enemy in the pill-box nearest us, and Captain Reynolds took that job on entirely on his own. Leaving the men to keep the enemy as busy as possible he rushed along the shell-holes until he was near enough to throw a bomb into the pill-box. Under fire all the time from the machine guns, it was nothing short of a miracle that he escaped. It was really a case of dodging death all the way. The enemy peppered him all the time, but he never seemed to mind.

Just when he was near enough he threw a bomb, but it missed the entrance, and the enemy then opened up a furious fusillade on our brave officer. Captain Reynolds took cover in a shell hole for a few minutes but if the Germans thought they had done with him they were mistaken, for he started crawling along towards the pill-box. ...The enemy kept up incessant fire, but Captain Reynolds wriggled and wormed his way toward the pill-box.

Suddenly he rose to his feet. We saw his arm go up in the air. We also saw the enemy potting him and then we saw a great bright glare come from the pill-box. He had thrown in a 'devil's fire bomb', and set the place alight... a party of them came rushing out. Captain Reynolds stood waiting to receive them with a revolver in his hand...The Germans were so terrorised by this brave officer that not only did they surrender themselves, but they brought out two machine guns and handed them over as well."

Harry and his men went forward again . Harry was wounded, but Corporal Soutar was full of admiration: "... he would not go out of the fight so long as there was any need for him to be in it...He led his men in person against the next positions, and in the very hard fighting that followed his personality was as good as a strong reinforcement to the Royal Scots. ...It was marvellous how he escaped, and even more marvellous the courage he displayed – in pressing on at the head of the men, unmindful of his wound, and thinking only of the need for carrying through the operations successfully...The final charge on the enemy position was led by Captain Reynolds himself, and the men would have followed him anywhere."

On 8<sup>th</sup> November the London Gazette announced that Harry had been awarded the Victoria Cross, and he gained the newspaper title of the "Pill Box Hero", but his wounds led him to hospital first in Boulogne and then London, and later to convalescence in Scotland.

With months of recovery still ahead for him, Northamptonshire decided to celebrate his achievement. His family were at East Haddon which was also the home of General H S Horne, who was home on furlough in December 1917 and it was agreed that this was a good opportunity to make a presentation to Harry. Harry was brought from hospital to attend a special service in East Haddon Church and speeches and presentations in the Institute. The notables of the village and county were present. Lord Spencer sent a message, which concluded, "I congratulate East Haddon on having a friend and neighbour, who by his undaunted fearlessness, has added another example to the splendid courage shown by Northamptonshire men during this terrible war. We are all proud of Captain Reynolds." The villagers followed with a dance after Harry had left.



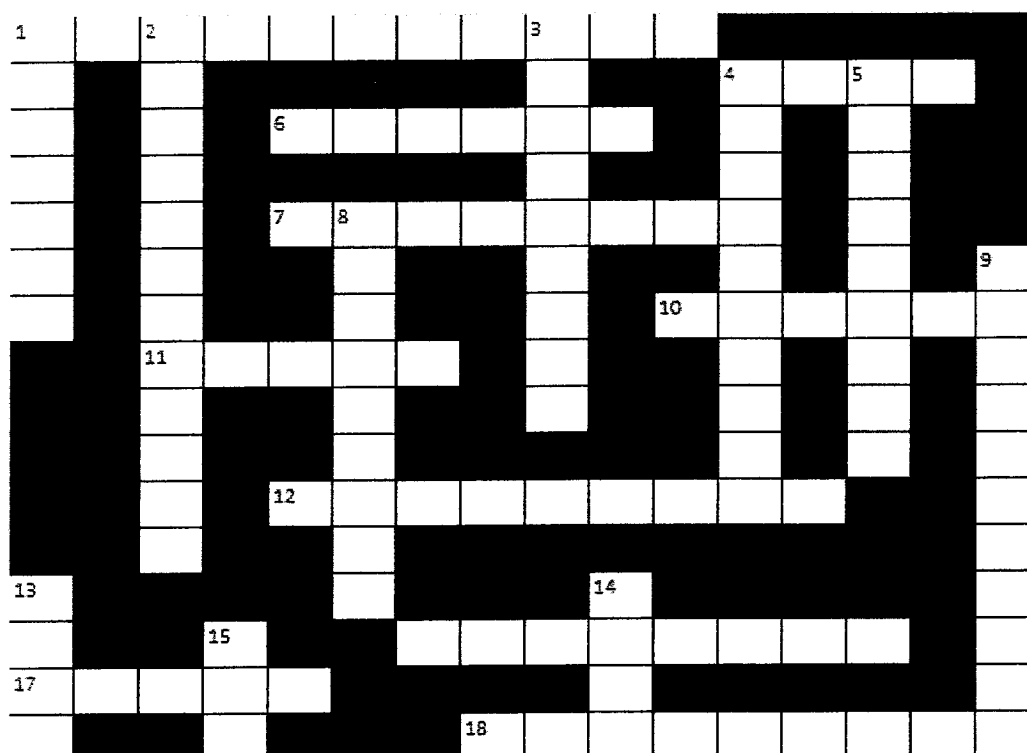
At our meeting we were able to see photos of the gold watch presented to Harry on this occasion, and treasured by his descendants, and the illuminated address which was bound in leather after the presentation.

.....  
This is not the end of Harry's story and more will be told as we commemorate his courageous act in September 2017.

\*\*\*\*\*

# Whilton Village Name Crossword

On the cold winter days, why not try your hand at our house name crossword below. All of the answers are names of houses from Whilton village.



## Across

- 1 Uncultivated land or maybe it's home for deer
- 4 An Indian town in Karnataka, or perhaps a British engineering company?
- 6 Beech (family) Boy
- 7 Top of the valley
- 10 (& 13 down) entrance to a place of worship
- 11 House or cottage take your pick
- 12 Outlook for bridge point scorer
- 16 Something inherited from the past
- 17 Henry VIII's house?
- 18 (AN) Ill Damsel

## Down

- 1 (AN) Eels fin
- 2 (AN) A lone gunshot
- 3 Conifers and Holly are examples
- 4 People in glass ones really shouldn't throw
- 5 Switched, this could be a character from a fairytale
- 8 Chimney corner
- 9 Home of fruit
- 13 See 10 Across
- 14 (& 15 down) peak of higher ground
- 15 See 14 Down

## Whilton Local History Society

The Society met on Friday 14<sup>th</sup> November, when the subject was “**The Water Gardens of Brockhall**”, and we were pleased to welcome two residents of Brockhall to the meeting.

We heard how Thomas Thornton inherited the manor of Brockhall in 1719. This was the same Thomas Thornton who was one of the guardians of the three Adams children of Whilton, who were orphaned while very young. Their story is told in “Living in the Gap”, available from Anthea Hiscock, Langton House.

Thomas Thornton was influenced by the Franco-Dutch style of gardening, and used water sourced from the stream in the valley and springs in the hillside, to create five ponds or small lakes, a curved canal and a basin. These were focal points for avenues, plantations and gravelled and grassed walks through the park. We heard details of the six years work digging, planting, sowing, turfing and building. Hundreds of young saplings were transported from London by horse and cart and men toiled to complete this creation between 1725 and 1731. This was a triumphant achievement for Thomas Thornton - a formal layout, with parterres and a mount near the house, from which the work could be viewed.

We also heard that two generations later, his grandson found this all too old-fashioned, destroying his grandfather's garden, and making a new “picturesque” park designed by John Webb. This Thomas Reeve Thornton took five years from about 1803 to 1808 to make the main ponds into a long sinuous lake, complete with island and boathouse, and to replace the straight avenues and tree plantations with more curvaceous arrangements of lime, beech, sycamore and hornbeam.

Little remains for us to see today in very private grounds below the Hall, most hidden by trees and modern transport routes.

\*\*\*\*\*

## HISTORY HOTCHPOTCH

The next meeting of the Whilton Local History Society will be held at 7.30 p.m. on Friday, 16<sup>th</sup> January 2015 in the Village Hall.

This will include a hot meal of **Old English Hotchpotch** in both a meat and vegetarian version. Fruit juice, coffee and tea will be available, or you may prefer to bring your own alcoholic drink. There will also be a **Hotchpotch** of notes and queries about Whilton's past, and the opportunity to make plans for the future of our Society.

The cost for this evening will be £5. Please book your place with Anthea Hiscock (01327 843319 or [anthea.hiscock@tiscali.co.uk](mailto:anthea.hiscock@tiscali.co.uk)) .

If you wish to attend without eating, then there is no need to book and you will be welcome to join us with the usual entry charge of £1.50.



## **Parish Constables – A new and exciting role within the Northamptonshire Police!**

In my previous contribution, I provided a brief outline on what my role as the Police and Crime Commissioner entails and alluded to some of the priorities that I have set the Force in my Police and Crime Plan.

It is clear to me that one of the things that people want to see from their police force is more visible policing. On my appointment I pledged to maintain the number of frontline officers at 1,220 - indeed we are one of only four Forces in the country not to have reduced the number of frontline officers in the face of the challenging financial climate.

Therefore, in order to increase visible policing and increase resource, one of the priorities that I have set the force is an ambitious increase of the Special Constabulary to 900 officers to support the work of the 1,220 full time officers. This will result in 900 more warranted officers on our streets and would make Northamptonshire's Special Constabulary the largest outside of London, contributing vital policing to our communities.

**Special Constables possess all the same powers as full time warranted police officers** and are provided with full training and equipment. They work with their full time colleagues, on a voluntary, part-time basis, performing duties ranging from **supporting specialist teams within the force to making arrests on the streets**. This really is one of the most exciting and dynamic voluntary roles available and is a unique and fulfilling experience. Moreover, the expansion of the Special Constabulary has brought about a range of new and exciting roles and opportunities.

One recently developed role is that of the **Parish Constable**. A Parish Constable is a Special Constable that is dedicated, through choice, to policing a specific area, for example Whilton and/or surrounding areas.

Parish Constables will undertake a wide variety of policing duties whilst linking in with both the local Safer Community Team and Parish Councils to ensure effective policing of the area and becoming a pillar of the community.

This is an ideal role for anybody who is interested in really making a difference where they live and I want **you** to be part of our journey to make Northamptonshire the Safest Place in England.

So if you or anybody you know interested in becoming a Special or Parish Constable in Whilton or any other area, or if you would like further details, please contact me at [commissioner@northantspcc.pnn.police.uk](mailto:commissioner@northantspcc.pnn.police.uk).



**WHILTON  
GARDENERS' ASSOCIATION**



**News from Olive**

Hi everyone

Our meeting on 1<sup>st</sup> October was well attended and very interesting. The speaker, Mr Steve Mackie, taught us all a great deal about "The art of Bonsai." He delighted us with his expertise, and even allowed us to handle some of his precious specimens. It was only when we had handed back the last that he told us it was worth £1500!

Our members' Christmas Social will be held on Wednesday 3rd December 2014, in the village hall starting at 7 p.m. The next meeting will be on Wednesday, 4<sup>th</sup> February 2015, and this will be the Annual General Meeting.

We wish our members and all Whilton gardeners a very Happy Christmas and New Year.

**New members are always welcome.**

**Ring: 07921429228 or 01327 209114**

.....  
**ROUGHMOOR SPINNEY**

The next Spinney work party will be on Sunday, 11<sup>th</sup> January 2015 and will be a

**FAMILY WOOD GATHERING AFTERNOON.**

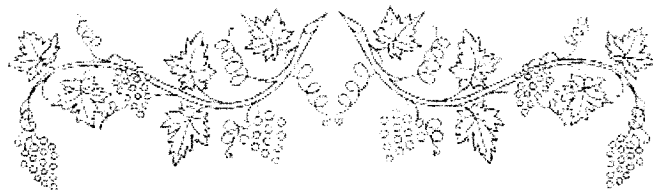


All ages are welcome to join in, children included. We shall be gathering and piling dead and fallen wood.

If the weather is uncertain, please ring Maurice ( 842006) or Anthea (843319) to check whether we shall be able to meet. Otherwise just come to the Spinney at any time between 2 and 4 p.m. equipped with wellies and gloves

There will be more work parties as the year progresses. If you would like to be informed of these by e-mail, please let Anthea know at:  
[anthea.hiscock@tiscali.co.uk](mailto:anthea.hiscock@tiscali.co.uk).





## **GROWING GRAPES IN WHILTON**

I've found growing grapes on the whole to be an enjoyable experience. There are a few basic rules to follow, and a few things to do at the right times, but it can be very rewarding when you get to bite into your own grapes.

First, decide if you have a suitable environment. Growing outside can prove to be more challenging. Dessert grapes need a south-facing, sheltered outlook, protected as much as possible from the elements. Vines will grow in most soils so long as the roots are not wet, not over-crowded and with good air circulation, especially when the grapes are growing.

I've grown my vines indoors, originally a black variety with seeds, which produced large juicy fruit. This was planted 35 years ago and produced grapes for almost 30 years until sadly I had to cut it down. I now have a white seedless variety producing smaller sweeter fruit. It was planted 4 ½ years ago in the early spring. I chose a vine that looked healthy and had good vigorous-looking growth.

When planting, choose the darkest north-facing corner in your greenhouse so as to train towards the sunny side. They say you should plant the root outside the greenhouse and train the plant inside. I have planted mine inside and had no problem; vines by nature have vigorous growth above and below ground.

When planting, plant as fruit; dig a deeper hole than necessary, put well-rotted compost in the bottom half, soil in the top, then plant the vine to the same depth as in the pot, firming and watering well. Initially check that it is moist, not wet; it will very quickly establish itself, and it is then a matter of following the rules and doing things at the right times.

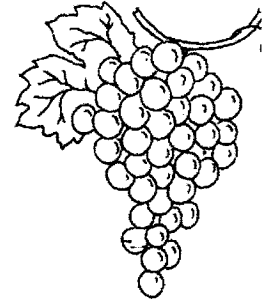
In the first year choose the strongest shoot, let run and train it to where you can best manage it, pinching out all the side shoots which will keep shooting at every leaf axis all through the growing season. When training, bear in mind that you will be growing grapes on side shoots which can be 1 inch to 2 feet from the main stem of the vine. At the end of the year, when the sap has stopped rising and the leaves have fallen, cut back the runner just above a leaf axis, (this may be up to half the first year's growth) cutting back to a constant thickness of growth.

In the second year, do the same as the first; allow to run, trimming all side shoots, and pruning back in winter. You should by now have a length of vine, maybe 10 or 15 feet long.

The third year, don't allow the main stem to get any longer. Pinch out this growth so as to encourage side shoot growth, which will shoot at every leaf axis of the main

stem every year. Don't allow any growth on the vertical stem from ground to roof level; just remove the buds as they shoot. Then allow every third leaf axis to shoot on the main stem, pinching out the other two. Allow the shoots to grow; most of these shoots will produce grapes, but some may not. Usually you will get two to three leaves, then a bunch of grapes, in the first year, increasing the number each year as the vine grows and strengthens the main stem.

The grapes will flower. You will need to thin out each bunch, cutting off two out of every three grapes. Wait till they are about 1/8 inch or 3mm in diameter; you will notice some are slightly larger than the others; try to keep these when thinning out. Prune more from the centre of the bunch as this will help prevent mildew in the centre, if we don't have a good summer or have a prolonged wet period when the grapes are ripening. This pruning is necessary to produce larger, juicier grapes; you may need to thin out more as the bunch forms to achieve best results.



It is important not to overcrowd your greenhouse and try to maintain good air circulation. You must prune all side shoot growth back to the main stem. I do this about February; then you can use the shoots for cuttings and this is before the sap rises in the main stem. It is important not to prune too early or too late or to cut the main stem when in leaf, as it will bleed sap for some time.

I hope you enjoy growing grapes as much as I do.

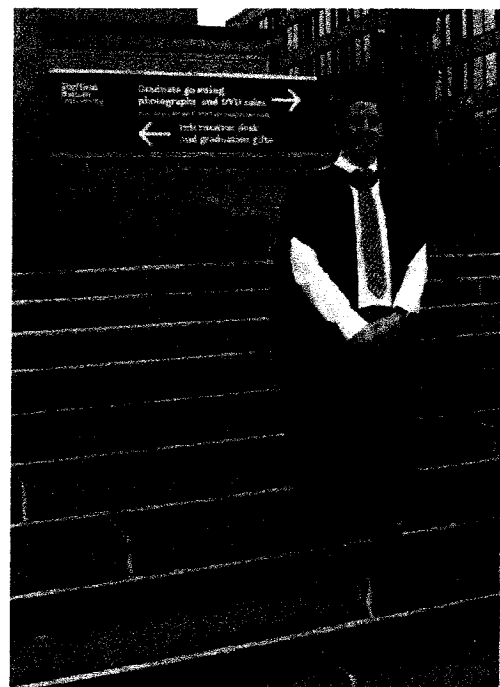
Lindon Morris

\*\*\*\*\*

**FAMILY NEWS**

Tom & Linda Treacy of South View, Whilton are very proud to announce that on Friday 21st November 2014, their son Ryan Treacy, Graduated from Sheffield Hallam University with a Degree of Bachelor of Science in Business and ICT. Ryan was watched by his proud parents, sister Daniella and partner Mikey, and Ryan's partner Ana. He is now employed by the Mace Group and works in the centre of London as a Sharepoint Product Developer. Ryan has lived in Whilton all his life, attending Brington Primary School and Bugbrooke School including sixth form.

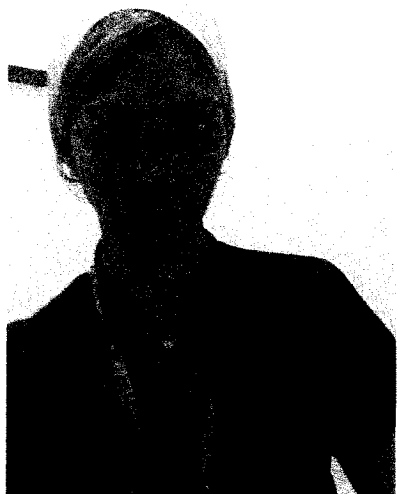
Many congratulations on your wonderful achievement Ryan and good luck for all your future plans.



[The editors are always interested to receive news of family achievements and special events, but please remember that we depend on you telling us about them!]

## News from Katie Green

Hello again! It means a lot to have been asked by the editors of the newsletter for an update on my life as a junior doctor. So here goes...



Time has gone so quickly since I qualified 18 months ago...I cannot believe I'm now towards the end of my junior doctor status; and rapidly approaching the start of my specialty training as an SHO and then registrar in paediatrics. Since I last wrote, I have most enjoyed my time in paediatrics (at Birmingham Children's Hospital and Great Ormond Street) but have also gained many skills, memories and experiences from my four

monthly general training jobs in hospital medicine, general surgery and general practice.

I have worked every hour of the day and the night, with some moments of triumph but also moments of tears. From the stress of a patient whose necrotic and infected foot quite literally dropped off, to cardiac arrests at 3am when you are the only person around, to happier moments getting that "impossible" cannula in, high-fiving children on their way home after weeks on the wards and FINALLY removing that yucky appendix at 5am when no amount of coffee or chocolate biscuits are enough to keep you awake ...I'm beginning to think there's not much I haven't seen or done!

Alongside the day-to-day rollercoaster ride on the wards, I have managed to complete and publish some research into the treatment of arthritis in children. The role of a doctor is constantly changing, and these days all doctors are expected to complete and publish research in areas of their interest. I have been very fortunate to be able to work with pioneering consultants in UK, USA and Canada, and subsequently to travel to conferences in Florida, Liverpool, London, Brighton, Manchester and next month in Boston to present this work to other children's doctors to publicise my findings and promote the best possible treatment for these unfortunate children with arthritis. After so many years of hard work at medical school and alongside long days of clinical work, it is so rewarding to see my work published in journals and online, but most importantly, to know that hopefully in some small way my work may help children to live happier and more active lives.

I am very lucky to have been offered a one year fellowship job in a famous children's hospital in Canada which would be a fascinating 12 months experience starting next July. The job would reward me with a wealth of clinical experience in a huge and world-leading hospital as well as a masters degree (hopefully with a bit of skiing and sight-seeing thrown in too!). Now I just have to decide whether to go, and if so, how many sets of thermals to take with me. It feels like an opportunity that cannot be missed.

Overall, life is busy, the work is hard, but the rewards are definitely worth it. I've managed to run the London marathon to raise money for children at Great Ormond Street, and still try to get out with my running shoes whenever I can. My friends and family remain key to my survival, and nothing beats that glass of wine with close friends after a long day 'at the office'.

Please make sure you all have your flu jabs done in good time ready for the cold winter predicted ahead, and have a very Merry Christmas and a happy and healthy 2015.

.....

## **DAVENTRY RADIO**

**By Noah Price**

This September I sent a letter to the Editor of the *Daventry Express*, calling out for people's interest and support for the idea of a community radio station in Daventry. Not long after I sent the letter, David Gazet – one of the reporters for the *Daventry Express* – phoned me up to tell me that the letter would be published in the paper and that he was very excited about the potential in the idea. The letter was published the following week on the 25<sup>th</sup> September and was featured amongst other letters in the *Daventry Express* on the 'YourViews' page. I had ended the letter with my email address hoping that some of the readers would get in contact with me to show their support for the idea. I was ecstatic when I checked my email inbox that morning to find that the letter had indeed sparked off an enthusiastic response - several people got in touch with me and said that it was a good idea. I don't think there will be any trouble in finding people who would be excited about the idea - but I hope that there will be some amongst them who would be prepared to actually commit themselves to help put the idea into action. It can seem like a daunting prospect and that is why I have written a proposal.

Here is the first page:

### **Mission Statement:**

According to the *Daventry District Area Profile*, published back in November 2013, many of the communities within the Daventry district face a number of 'challenges due to being isolated from key services'. I propose that a non-profit, community radio station would be a beneficial service to the people within the district.

One of its many duties will be to tackle issues such as social exclusion by bringing the communities closer together with a fair balance of information and entertainment. It will report on local news and events (charity, school, sport etc.) and it will give a platform to anyone who wishes to voice their opinions or concerns over pertinent social issues, news and events of both local and global importance.

It would help local businesses, groups and members of local authorities with promotion, whether it be in the form of a radio advert, an on-air/pre-recorded interview or through the means of leaflets and posters which would be put on display and obtainable at the radio station itself.

And the station will also provide work experience opportunities and a volunteering scheme for people who are interested in enriching the district or seeking to improve their career prospects in journalism, office work, technology and radio broadcasting.

**Target communities:**

Daventry district is the largest district in the county of Northamptonshire but it has the smallest population, with approximately 77,800 residents – the majority of whom live among the district's 78 villages.

*Daventry Radio* would intend to reach out to all the inhabitants within the district, including: people from ethnic minorities, the elderly, the disadvantaged and those who are socially excluded.

In a bid to make sure that *Daventry Radio* can be heard by as many people as possible, its broadcasts will be made accessible on both the internet and on digital/FM radio sets (At some point in the future the Digital Switchover will see all BBC radio stations and many national and regional commercial stations currently on FM switch to digital broadcast only.)

The station will aim to have a diverse output of content and music in order to appeal to everyone's individual tastes and interests.

**Objectives of the service will be:**

- To improve and maintain social unity.
- To advance both formal and informal education.
- To provide an outlet for creativity, shared vision and individual expression.
- To help keep listeners up-to-date with local and global news.
- To enlighten the listeners on different aspects of life within the district.
- To highlight the valuable work being done within the communities.
- To give a voice to the under-represented and misrepresented.
- To offer work experience, employment and volunteering opportunities.
- To promote local businesses, groups and members of local authorities.



*If you are interested in  
community radio station in*

*knowledge or advice that may help the development of the radio station and you would like  
to read Noah's proposal in full, contact him via email: [noahprice91@googlemail.com](mailto:noahprice91@googlemail.com).*

*supporting the idea of a  
Daventry or have any*

## LOVING HOME WANTED IN WHILTON



Dear Humans of Whilton

My name is Pip, and I am a very loving black cat. I have lived in this village for all of my 7 years, and I relish strolling around seeing what you are all up to and wondering across the fields pleasing myself.

My owner is soon going to move, and he is worried that I will not like his new home as it is near a very busy road, and well I don't really like these wheeled things you humans like to move about in.

So, I have taken it upon myself to write you all a little note, to see if anyone out there would be willing to give me a home. I am not much trouble – I'm too old to be climbing curtains now, but still young enough to not need much attention from those people who like to wear face masks and whose favourite colour seems to be green.

If anyone can help – well you best speak to the man who feeds me; Gordon – you might see him driving the school minibus. Although I'd think it very funny to watch you all chasing after that it might be worth giving him a call on 07860 843515.

Thank you, Pip

### **Ice Skating at Whilton Locks Garden Village at Christmas!**

Open air and with real ice you can experience an exhilarating skate with friends and family. Our real ice rink can be enjoyed by people of all ages and abilities. We have a team of trained ice stewards who ensure that our rink is safe and well maintained at all times. Ice skating sessions start on the hour and last for 45 minutes. Free skate hire is included in the ticket price.

#### **Ice Skating Dates:**

From Saturday 22nd November to Monday 5th January 2015

Mon - Friday: 9am - 3pm (Off Peak during school days)

Mon - Friday: 3pm - 6pm (Peak)

School Holidays - from Monday 22nd December, are classed as peak times all day

Saturday: 9am - 6pm (Peak)

Sunday: 10:30am - 4:45pm (Peak)

<http://www.wlqv.co.uk/iceskatingnorthamptonshire.htm>



# Brington and Whilton Pre-School

The Village Hall, Whilton

The children of Brington and Whilton Pre-school invite you to join with them for their

**Christmas Service**  
At  
**Whilton Parish Church**  
on  
**Friday 12<sup>th</sup> December 2014**  
starting at **10.30am**

**After the service back at Whilton Village Hall for Coffee and Mince Pies and Raffle of a Hamper.**  
**It would really be good to see you there.**

If you have a child of 2 years and over, we still have spaces for them to come along. We offer excellent education and care and are led by very well qualified and caring staff that engage with the children and get to know them well in the small, but friendly environment.

Our sessions are:

**Monday** 9.30am – 1.00pm including lunch,  
**Wednesday** 9.30am – 1.00pm including lunch  
1.00pm – 3.00pm for children over 3 years  
**Friday** 9.30am – 1.00pm including lunch

If you would like further information or would like to visit the pre-school please contact Jenny Holman 01604 770083,  
email [petejennyholman@btinternet.com](mailto:petejennyholman@btinternet.com) or visit  
[www.bringtonandwhiltonpreschool.org.uk](http://www.bringtonandwhiltonpreschool.org.uk)

**HAPPY CHRISTMAS TO YOU ALL**

**Ask your parents/grandparents /great grandparents about the 1950s when:**

- A takeaway was a mathematical problem
- A Big Mac was what we wore when it was raining
- Fish didn't have fingers
- Rice was a milk pudding and never, ever, part of our dinner
- Healthy food consisted of anything edible
- Cooking outside was called camping
- The one thing we never had on our table was...elbows!

# Christmas Fun Stuff

So it's here again, the kids amongst us (both old and young) look forward to this time of year for months and now with the start of advent we know it's truly just around the corner....so here's a fabulous festive recipe to get you even more excited!



## Gingerbread Recipe

350g (12oz) plain flour  
100g (4oz) unsalted butter  
1 tsp bicarbonate of soda  
½ tsp ground cinnamon  
4 tbsp golden syrup

175g (6oz) light soft brown sugar  
1 egg beaten  
1 tsp ground ginger  
½ tsp mixed spice  
Sweets etc. to decorate

1. Sift together the flour, bicarbonate of soda, ginger & cinnamon into a large mixing bowl. Add the chopped butter and rub into the flour, stir in the sugar.
2. Lightly beat the egg and syrup add to the bowl and mix until all clumped together. Remove the mixture from the bowl and place on cling film, wrap and place in the 'fridge for 15 mins – 1 hour.
3. Preheat the oven to 180C/350F/Gas 4. Line baking trays with greaseproof paper.
4. Roll out the dough on a lightly floured surface so it's about ½ cm thick. Using cutters, cut out gingerbread men (or whatever shapes you choose) and place on the baking tray leaving gaps between them.
5. Bake for 12-15 minutes (lightly golden brown). Leave on the tray for approx. 10 minutes to harden, then move to a cooling rack.
6. When cold ice and decorate, then enjoy!

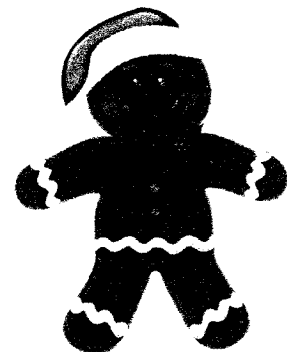
### Joke Corner

What did one snowman say to the other snowman?

*Can you smell carrot?*

What is the best Christmas present in the world?

*A broken drum – you can't beat it!*





# All About Me!

This issue we have an update (with a little bit of help) from possibly our youngest contributor – Ben Whitcombe (aged 4) who recently started school and wanted to share with you how he is getting on.

## My First Term at School

I like going to school because of the playground, I play with everything in the playground. Sometimes I play with all the children but most of all I play with my big sister; Louise.

Treasure is my best friend, we play with the trains and the bikes.

Mrs Smith is my favourite teacher because she helps me with everything.



I know how to spell some words now, like my name, Mum, Dad and cat and I can count to 100.

We learnt about fireworks, they go bang. I did a drawing of fireworks with lots of colours. We used chalk on black paper.

We learnt about war and the soldiers that died, we wore red one day.

I like everything about school, but not gymnastics because we had to keep going backwards and forwards again when people were naughty.

When we are good at school we get stickers and when we look after people we get respect stickers. I've got stickers but I've lost some of them.

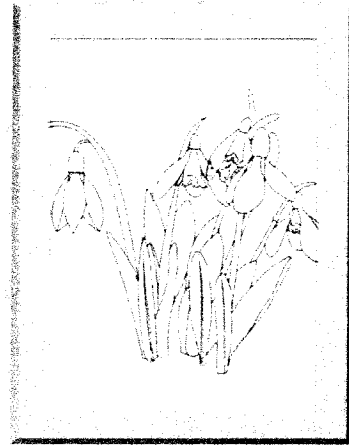
I go on the bus to school, we have to wear seatbelts in case we crash. I can do my seatbelt up by myself.

Benjamin Whitcombe (4)

## CANDLEMAS BELLS

February 2<sup>nd</sup> marks the old festival of Candlemas, which celebrated the purification of Mary the mother of Jesus and the presentation of the baby in the Temple at Jerusalem. It was the day when people brought their candles to church to be blessed and when all those in church lit a candle in the darkness, as a sign of hope and purity.

Outside the church there was usually another symbol of hope, with the first inkling of spring. The flowers we now call snowdrops were once known as Candlemas bells. We look forward to seeing some flowering in Whilton and in the Spinney this Candlemas.



## WHAT'S ON IN WHILTON

### WINTER 2014 – 2015

#### Regular weekly events include:

- **BRINGTON AND WHILTON PRE-SCHOOL in the Village Hall:**  
Term time: Mon, Wed, Fri: 9.30 a.m. – 1 p.m. and Wed 1 – 3 p.m.
- **BELL RINGING at the Church:**  
Mon: 7.15 p.m. 7.45 p.m.  
For further information please contact Justin or Theresa Baker:  
844263 or e-mail: [j.t@online.net](mailto:j.t@online.net).
- **WHILTON WARBLERS CHOIR in the Church:**  
Term time: 7.15 for 7.30 p.m.
- For other events, please see opposite page.

**WHAT'S ON IN WHILTON**

**WINTER 2014 – 2015**

<b>DAY</b>	<b>DATE</b>	<b>TIME</b>	<b>PLACE</b>	<b>EVENT</b>
Wed	3 Dec	7 p.m.	Village Hall	Gardeners Association Christmas Social
Sun	7 Dec	10 a.m.	Harlestone Church	Benefice Eucharist with Sunday School
Wed	10 Dec	7 p.m.	Village Hall	Parish Council meeting
Fri	12 Dec	10.30 a.m. 7.30 p.m.	Church Church	Pre School Christmas Service Whilton Warblers Concert
Sun	14 Dec	6 p.m.	Church	Evening Communion
Tues	16 Dec	2.30 – 4 p.m.	Village Hall	Tuesday Chat, including decorating the tree
Fri	19 Dec	4- 8 p.m.	Church	Christmas Tree Decorating
Sat	20 Dec	Morning	Church	Christmas Tree Festival coffee morning
Sun	21 Dec	6 p.m.	Church	Christmas Tree Festival and Village Carol Service with Christingles
Thurs	25 Dec	9.15 a.m.	Church	Christmas Celebration
Sun	28 Dec	11 a.m.	Church	Worship for all
<b>2015</b>				
Sun	4 Jan	10 a.m.	Church	Epiphany: Benefice Eucharist with Sunday School
Sun	11 Jan	2- 4 p.m. 6 p.m.	Spinney Church	Wood gathering work party Evening Communion
Wed	14 Jan	7 p.m.	Village Hall	Parish Council meeting
Fri	16 Jan	7.30 p.m.	Village Hall	Local History Society: History Hotchpotch
Sun	18 Jan	9.15 a.m.	Church	Worship for all
Tues	20 Jan	2.30- 4 p.m.	Village Hall	Tuesday Chat
Sun	25 Jan	11 a.m.	Church	Worship for all
Sun	1 Feb	10 a.m.	Brampton Church	Candlemas: Benefice Eucharist with Sunday School & Christingle
Wed	4 Feb	7.30 p.m.	Hall	Gardeners Association AGM
Sun	8 Feb	6 p.m.	Church	Evening Praise
Sun	15 Feb	9.15 a.m.	Church	Worship for all
Fri	20 Feb			Last date for contributions to Newsletter
Sun	22 Feb	11 a.m.	Church	Worship for all
Tues	24 Feb	2.30- 4.p.m.	Village Hall	Tuesday Chat

**The Whilton Newsletter is published quarterly and circulated free to every household within the parish boundary. The costs are met by the Parish Council.**

**The Editors are:**

- **Anthea Hiscock, Langton House, Main Street.  
Telephone: 01327 843319. e-mail: [anthea.hiscock@tiscali.co.uk](mailto:anthea.hiscock@tiscali.co.uk)**
  - **Karen Whitcombe: Inglenook, Main Street  
Telephone: 01327 843544. e-mail: [karen.whitcombe@cummins.com](mailto:karen.whitcombe@cummins.com)**
  - **Rochelle Lye, 1 Langton Rise  
Telephone: 844181. e-mail: [rochelle@btinternet.com](mailto:rochelle@btinternet.com)**
- 
- ❖ **We would be very happy to welcome another member on to the editorial team. If you are interested, please contact any of us.**
  - ❖ **The Editors welcome material for the Newsletter. If possible, please send your contribution by e-mail. If you do not have a computer, the editors will be happy to type handwritten articles for you.**
  - ❖ **The next issue will be the Spring Edition, covering March to May 2015. The last date for contributions will be 20<sup>th</sup> February 2015.**
  - ❖ **The Newsletter is published quarterly, but Whilton also has a website – [www.whilton-village.net](http://www.whilton-village.net). This contains details of the organizations in the parish, previous Parish Council Minutes and Newsletters and a comprehensive Picture Gallery. It also has latest news and updates on parish events.**
  - ❖ **If you would like to advertise your local business, flyers can be delivered to every household in the parish with the Newsletter at a small charge. For information please contact one of the editors.**