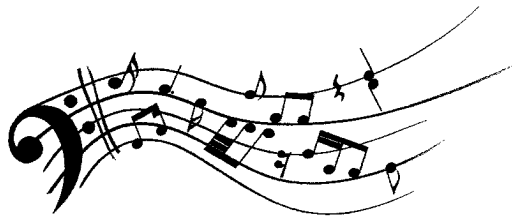


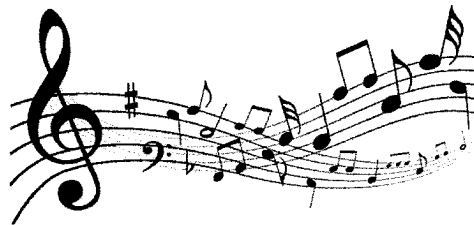
WHILTON WINTER NEWSLETTER

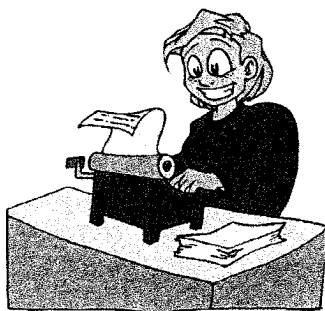


*Whilton Warblers Community Choir
Photographed at their first concert by Richard Oliver*

DECEMBER 2013

FEBRUARY 2014





Letter from the editors.



The days are getting shorter, and the evidence of winter is starting to appear all around us. Whilst the weather may not be the best of the year, there is still plenty of activity in our village community.

We would like to thank those readers who have provided us with feedback on previous editions of the newsletter. We really appreciate your comments (good or bad) on what we include.

This issue has developed quite a musical theme featuring commentary on the recent performance by the Whilton Warblers, as well as a forthcoming attendance at 'Young Voices' by the school. Look carefully and you may even be able to decipher some musical themed anagrams.

In preparation for spring, we should let you know that the next edition of the newsletter; normally published on the 1st March will be slightly delayed; please bear this in mind when submitting articles for publishing.

As always a big thank you to all our contributors - we really could not create the newsletter without your help. Finally, we would like to wish everyone a merry Christmas and a happy, healthy New Year.

The Editors.



Whilton's new community choir held its first concert in Whilton Church on Friday 25th October. The choir was encouraged by being able to share the concert with the community choir from Greens Norton. The Greens Norton choir have been in existence for about three years and their advice and support has been invaluable as Whilton Warblers have been forming.

The church was packed and both choirs and the audience were surprised and encouraged by the performance and the support. The Whilton choir is learning fast under the able tuition of Judit, the musical director, and through the hard work and persistence of Linda Treacey and Sarah Bennett the choir has been awarded a start up grant.

All are invited to the Christmas concert. This will be held in the church at 7.30 p.m. on Friday, 13th December. Tickets at £3 are available from Linda Treacey (phone 842034) and Sarah Hawkins (phone 842487).

Some members of the choir will also be singing at the Carol Service at 6 p.m. on Sunday 22nd December.

If you are interested in joining Whilton Warblers, you will be very welcome. The choir meets in the church on Tuesday evenings at 7.15 for 7.30 p.m. during term time.

For further information e-mail Linda at lindahalltreacy@gmail.com

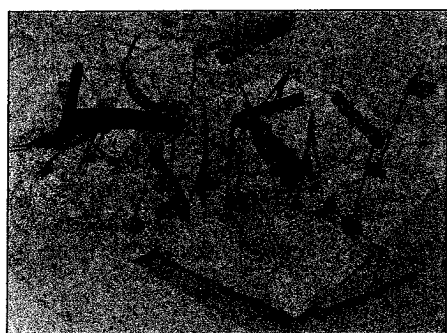


.....

WHILTON LOCAL HISTORY SOCIETY

The society met twice this autumn. On 12th September the subject was:
“THE BROOK PROJECT: PEOPLEING THE MAP.”

In this project we are looking at the history which surrounds the stream which passes Whilton, and then runs down past Brockhall towards the Nene. After marking the map with coloured flags to represent historic figures along the route we heard about two locations passed by the stream, Muscott village and Whilton Mill.



Paper flags on part of the map, showing names and dates of people who lived by the stream

MUSCOTT VILLAGE

Today there is hardly anything left of Muscott beyond the farm and two or three cottages. This makes it hard to imagine the bustling agricultural community there in the 1200s and 1300s. Between 1301 and 1377 there was a startling drop of taxpayers from 48 to 5; even allowing for some discrepancies, this must indicate a major disaster, and it is most tempting to look to the Black Death, whether people simply died or chose to abandon the village.

We do have some clues about the people of Muscott before the disaster. Surnames were only just beginning, so many people had only one name and a description which would later become a surname. This was particularly important as Richard was so popular!

Walking through Muscott in the 1200s, we might have met William, son of Stephen of Brockhall, who had a son called Geoffrey and owned a toft in Muscott next to the ditch by the yard of Nicholas Albe. Richard, son of Nicholas of Muscott, and married to Cecily, had property in Muscott, Buckby, Throp and Brockhall. Another Richard, son of Elys and Matilda, had a house in Muscott, for which he paid one silver mark and service to John “le Louerd” and paid the chief lord of the fee one clove gillyflower annually. Some of his land lay beside land farmed by Geoffrey Bercarius (Shepherd). Henry le Somynour of Muscote, had a son named Thomas. Perhaps Henry’s job was to summon people to the manor court.

In 1328 Richard, son of Richard Elyot of Muscott had a house and land, which he held for the service of providing one candle and one lamp worth 12 pence each year and paying the lord or lady of Brockhall 2 shillings annually. Another villager held his “messuage and toft in the town of Muscott” for performing the services due to the altar of the parish church of Brockhole. This man had a surname: Richard Molt of Muscott. This was probably the Richard Mold of the 1301 tax list. It is possible that this surname is an abbreviation of the Latin “molendinarius” or miller. In this case it might be an early record of a miller called Richard at Muscott Mill.

We also heard stories about the area round **WHILTON MILL IN VICTORIAN TIMES**. Many of these were tragic, but the following tale dating from 1844 has a happy ending. There was a nasty bend as you came down Whilton Hill to cross the bridge over the stream. Drivers needed to pay attention. It was tempting to come down too quickly especially if you had already partaken of refreshment at Northampton Market.

Perhaps this is what had happened to two gentlemen from Welton, who were trying to come home on a Saturday evening in May 1844. Mr Thomas Derby and Mr William Jones were returning from Northampton Market.

"The night being dark they came into contact with a stone bridge near Whilton Mill (which is a very dangerous place), by which the gig was upset, and the shafts both broken off. The horse, a spirited animal, finding himself at liberty, started off at a furious rate through Norton, and proceeded on to Daventry, and was stopped soon after it had passed through the town, and although at the time it came through the streets there were great number of people about, only one person was knocked down by it, and fortunately he was not injured.

The horse was dreadfully cut on one leg, and he will be some time before he will be able to work. Immediately the horse reached Daventry several persons started in search of the gig, expecting to find the parties injured. When they arrived at Whilton Bridge they found the body of the gig in the road, and the two gentlemen enjoying themselves at a friend's house close by. Mr. Jones escaped unhurt, but Mr. Darby had received a very severe bruise on the ankle, and it is a miracle they were not both killed on the spot."

On 28th November the Local History Society met again to hear a fascinating and enthusiastic talk by Bob Illingworth, who is a National Trust garden volunteer at Canons Ashby.
His title was:

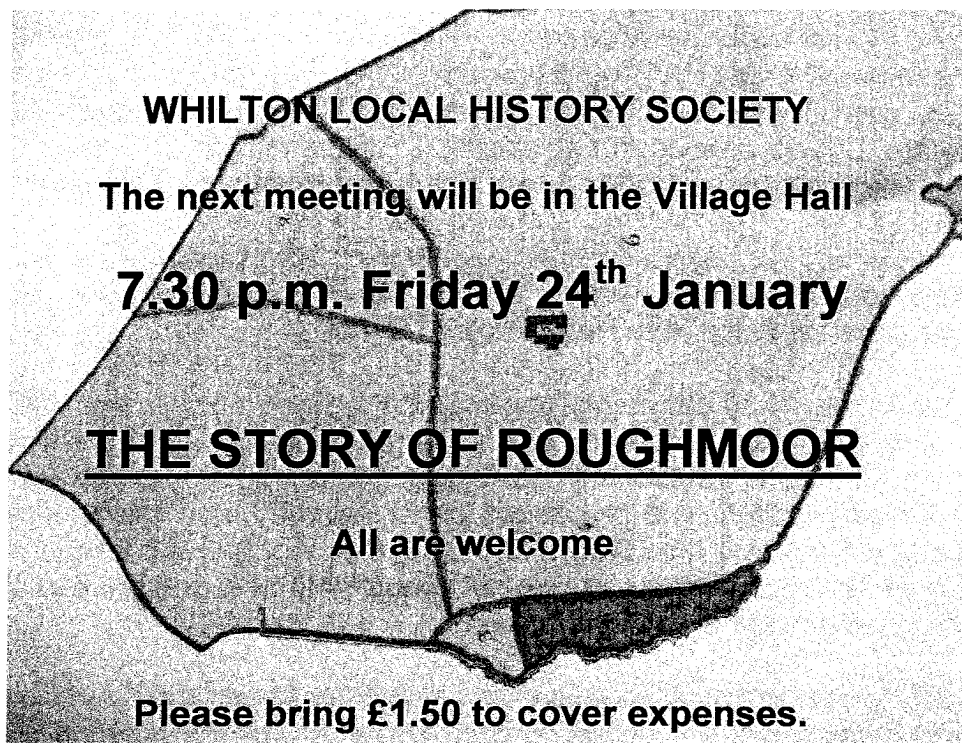
Canons Ashby, a Labour of Love.



He explained how the decisions were made to restore the gardens to their late Victorian appearance, followed by the meticulous research and the hard labours of the gardeners. We saw the 1896 plans drawn by Sir Henry Dryden, showing the gardens as he knew them, and early 20th century photos which gave clues about layout and planting.

Bob's enthusiasm and expertise, combined with illustrations of the restoration work and the lovely photos of the renewed gardens made the evening very worthwhile for all who attended.

We came away with much more knowledge about the history of the house, garden and estate, and many of us decided to revisit the gardens with new eyes in 2014. They will be open again in time for the February half term.



**WHILTON
GARDENERS
ASSOCIATION**
News from Olive



Hello Everyone

Winter is upon us, so where has this year gone? I am sure we are all looking forward to a New Year with warmer weather.

On 2nd October the visit by Celia Davis, who spoke about the sex life of plants with a slide show, was well attended and enjoyed by members.

On 4th December at 7 p.m. we shall be holding the Christmas Social Supper in the Village Hall.

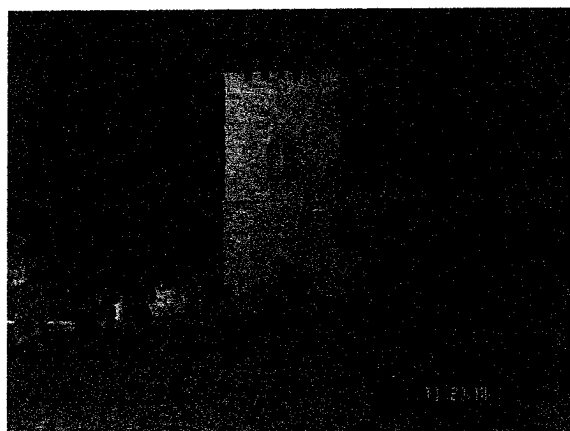
The AGM will be on 5th February. If possible all members should attend this meeting as the Annual Report will be presented by the committee members. The AGM will be followed by a "Fun Quiz".

All that remains this year is to say on behalf of the committee: we wish you all a very happy Christmas in 2013 and a successful growing season in 2014.

New members are always welcome.

Ring: 07921429228 or 01327 842401.

ST ANDREW'S WHILTON CHRISTMAS LIGHTS



This year we are once again giving you the opportunity to light the Church and make it a focal point of the village during the Christmas period. Cost is just £10 a night.

To reserve your special day or to select a date between 11th December 2013 and 6th January 2014, please contact Jon Brierley (843380) or Jbrierley1@aol.com

FEEDING THE CHOIR IN VICTORIAN STYLE



This account, dated 8th January 1859, reveals an aspect of Whilton which has now disappeared: the church choir dinner at New Year.

“On Tuesday last the church choir of the snug little village of Whilton met at the school-room to partake of a good substantial dinner of roast beef and plum pudding, the Rev. Randolph Skipwith, rector, presiding. Amongst the number were observed Mr. James Emery, Mr. Perridge Langton, churchwardens, Mr. Richard Elliott, Mr. Thomas Emery, Mr. Branston, the schoolmaster, and several others.

About eight o'clock the young ladies of the village made their appearance, which indicated that a change of proceedings was about to take place. After a short pause the sound of the violins was heard, and several quadrilles and country dances followed.

The meeting separated highly gratified.”



A quadrille was a square dance performed typically by four couples and containing five figures, each of which is a complete dance in itself.

The school room is now the Village Hall; space must have been limited!

NEWS FROM ST ANDREWS

Looking back we have had an interesting couple of months. We held our Harvest Festival Supper in September in the Village Hall. This was in a different format and gave us the opportunity to celebrate in an informal way. We decided to try a hot buffet for a change and it was great to see how everyone pulled together to deliver the food. Anthea Hiscock read an account of Harvest Festival in Victorian times. They celebrated on a much larger scale back then with a full day of events and a large party to round off the evening. There was a much closer contact between the villagers and the land as there were many more farmers and land workers in those days. There was a clear link to the past as the village schoolchildren set out from the school, which of course is now the Village Hall. It was also appropriate that we sang the same harvest songs as our predecessors. I think I can speak for everyone who attended that we had a really good evening of food and companionship enjoyed by all.

Christmas seems a long way off but we are already making our plans for services and events and we do hope that you will be able to take part. We are holding a Christmas Tree Festival on Sunday 22 December where village organisations will be able to decorate a tree as part of our Christmas celebrations.



The trees will be on display at our Carol Service at 6 p.m. which we are combining with Christingle for our young people. Everyone is invited to attend. We will be serving mulled wine and mince pies after the service. I do hope that you will be able to join us and get your Christmas week off to a great start.

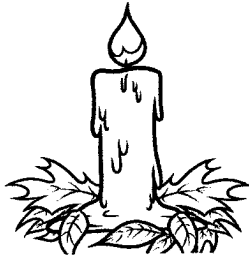
Our Christmas Day service this year will be at 9.15. I know that Christmas morning can be busy but I hope that you will find time to celebrate with us on Christmas Day. We are also arranging to light the Church in the run up to the Festive Season. I always think it brightens up the village during these dark nights. Full details are published elsewhere but if you would like to take part please let me know.

We are always open to your ideas and suggestions and if you want to contact us, Dave is on 842167 and I can be contacted on 843380 or by email Jbrierley1@aol.com.

Jon Brierley
7 Langton Rise

LETTER FROM THE RECTORY

We are all busily preparing for Christmas – yes, it might seem early, but time will run away with us and it will be here before we know it – as they say. Preparing for Christmas is as much fun as the day itself. In our churches, we are preparing to celebrate Jesus Christ's birth and I hope that all of you will find some opportunity of coming into church to enjoy the festivities.



In Whilton we have a special **Christmas Carol Service by Candlelight** on the Sunday evening before Christmas – 22nd December at 6pm. Light is an important symbol at Christmas. As candles and Christmas tree lights brighten up the dull days of short daylight, so the birth of Jesus the coming into the world, the birth of God's Son, both divine and human together, lights up our inner lives so that the darkness of worry and aggression and suffering is dispelled. That is indeed something to celebrate and what Christmas is about. At our carol service, we will remember Christ's birth by holding candles. The younger generation will receive a Christingle, the light representing Christ as a candle embedded in an orange. Those who don't want to get "all sticky" with orange juice or don't want to be tempted with the sweets that, so I am told, represent the world, can hold a single candle.

We will turn on the lights of the Christmas trees which will have been decorated by various village groups and pray for God's blessing on those who have decorated them and those of us who look at them, also asking that God will bless similarly the trees in our homes. The Benefice Choir will help us sing carols. We will also be assisted by Whilton's very own Warblers, making their first appearance at a service. And the celebration will continue afterwards with mulled wine or less alcoholic refreshment if so desired. Do come along and join the fun!

Our Carol Service promises to be full of fun. However if you enjoy a more traditional Carol Service, the **Benefice Choir Carol Service** is being held at Brington on Monday 23rd December at 7.15pm. This is always very popular so it is best to reserve a seat by getting a free ticket in advance by contacting Joan Heaps on 01604 770402 – but we won't turn anyone away. Christmas Eve has two traditional services in the benefice, one at Holdenby at 3 pm by candlelight and then our Midnight Eucharist service, starting at 11.15pm, in Brington.

Then we have our own **Christmas Day Service** in Whilton at 9.15am. In addition, of special interest to children will be our **Ready Steady Here Comes Christmas** afternoon (from 2-5pm) at Brampton Church on Saturday 14th December (contact Alison on 884834 or email virginiahenley@aol.com to book a place). There is a Christmas Messy Church at Norton at 10.30am on Sunday 15th December – all children welcome for a Special Birthday Party for Jesus; please bring at least one parent with you. Then there is the ever popular Live Nativity at East Haddon on Christmas Eve at 3 pm, starting in the church and moving to a real stable. There may be no room at the Inn but there will be plenty of room on the farm for everyone.

Wishing you all a wonderful Christmas as we celebrate Christ's Birth

Sue

FAMILY NEWS

WEDDINGS

We wish every happiness to Lydia, daughter of Anthea and Robin Bartram of Wadd Close Lane. Lydia and her Kiwi husband Craig McTamney were married in St Andrew's Church on Friday 6th September. Lydia who works as a physiotherapist in Brisbane, Australia, travelled home for her wedding, which was followed by a reception at Fawsley Hall. One of the memorable moments there was the impromptu Maori singing of guests led by the bridegroom's father.



The photo of the wedding of Helen Denbigh and Paul Picton arrived too late to print in the last edition, and so we include it here.

RUGBY PROGRESS



George Meadows of Manor Lane started playing rugby at Northampton Old Scouts Rugby Football Club (NOSRFC) in Northampton in 2005 at the age of 5. He's progressed over the last 9 years from basic 'tag' rugby to full contact. With his team, over the years, they have won numerous competitions; probably some of the most memorable occasions being at the Saints, Twickenham and last year the East Midlands Champions for under 13's.

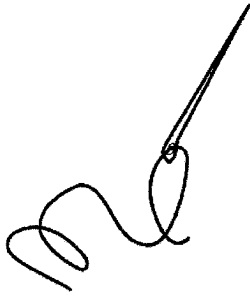
Since joining Lawrence Sheriff School in Rugby in 2011, he has been playing for the school as well. This season he has been selected to play for Rugby & District Schools RFU team. Well done, George, and good luck!

FREDA ALLEN

We send condolences to the family of Freda Allen, who died this autumn aged ninety. Freda was one of 13 children and the sister of Mrs Ginny Clements. Although she was born in Norton in 1923 Freda she had a long connection with Whilton. In the 1960s she lived at both South View and the Gardens, with her husband Jack and children Tony and Pat.

After she was widowed she came back again, moving to Roughmoor, where she helped with the shepherding. Whilton villagers will remember her driving the pony and trap, and giving rides at Whilton fete. She spent her last years in Kilsby.

NOTES, QUERIES AND REQUESTS FROM OUR READERS



CROSS STITCH

I have been given a piece of cross stitch to make into a cushion cover. Trouble is, the work has twisted slightly and I need to ease it into shape before I can do anything with it.

Any suggestions on how to do this?

Many thanks.

Teresa 843988 or teresa@tlc-uk.co.uk



KEYBOARD

Do you have a use for a fairly basic electric keyboard with stand?

If you are interested, please ring Shirley on 842968 or email: d.brown253@btinternet.com



THE RAINBOWS TRAIL

Sandie Coleman of the Lockgate Café has signed up for the "Britain v. Cancer" challenge - six days of trekking in the Himalayas in India.

She has also pledged to lose 4 stone, of which one has already gone!

Sandie's aim is to raise £10,000 for Rainbows, the Leicester Children's Hospice which serves this area. Sandie has personal experience of children who have need of its services.

If you would like to sponsor Sandie she can be contacted on 01327 842017. You can visit her at the café at Whilton Locks or e-mail her at: lockgatecafe@waterescape.org, or donate at: [www.justgiving.com/Sandra Coleman](http://www.justgiving.com/SandraColeman).

There is a Christmas Raffle in aid of the same cause, with prizes varying from a two night stay at Coombe Abbey to £100 worth of Lego.

Tickets at £2 are available from the Lockgate Café. The draw will take place at 4 p.m. on Sunday 15th December, with refreshments at the café.

PARISH COUNCIL NEWS

From the Clerk's Pen



It's difficult to believe that the end of 2013 is in sight and that we're busy with budgets again. Early indications are that the precept will be slightly lower than last year, depending on whether Daventry District Council passes on grants received from national government to offset the impact on Council Tax Rate. We still have seven street lamps to upgrade but, to keep costs down, it was decided to split the remaining seven lamps between 2014 and 2015.

The Parish Council objected to the planning application for pit garages at Whilton Mill Kart Circuit, firstly on the basis that it would increase noise levels and secondly that it constituted an over-development of the site. Daventry District Council finally refused the application last month on the basis that the scale, design and prominent location would detract from the rural character of the area and constitute an overdevelopment of the site that is out of keeping with the general character and visual amenities of the area and would constitute an incongruous feature within the rural streetscene.

It is with great pleasure that I announce that the parcel of land next to the church wall has finally been registered as Whilton's Village Green. The two parcels of land on the opposite side of the road outside Stone House and Home-Field Farm will remain as Highway, maintainable at public expense by Northamptonshire County Council, and will be treated in accordance with council policy and the relevant statutory provisions. This was a long time coming and we would like to take the opportunity of thanking all present and past councillors and clerks who have played a part in this!

Another long-standing issue in Whilton will soon be a thing of the past. Anglian Water will commence replacing the East Haddon to Whilton water mains on 25 November with a construction period of 36 weeks. There are no actual works planned within Whilton but due to the restricted width of a number of roads, there will be temporary road closures on Brington/Whilton Road. This section is programmed to commence after Christmas, on 6th January, dependant upon progress and weather conditions. Look out for advance warning/diversion signs. Full details and a map showing road closures and diversions are available on the website and noticeboards.

All that remains is for me to wish you and your families a Merry Christmas and Happy New Year on behalf of the Parish Council.

Erica Fothergill
Parish Clerk

WHILTON SOCIAL LUNCH
Tuesday, 19th November 2013

We were very lucky with the weather and although it was cold, the sun shone and put us all in a happy frame of mind for a social get-together.

The menu was appropriate for late autumn: delicious beef casserole, potato dauphinoise, sprouts and casseroled mixed vegetables. Three desserts were on offer, pears in mulled wine, apple tart and custard, and orange layer pudding. All were delectable and the apples and pears contained in these offerings were grown in Whilton!! Second helpings were taken at both courses – obviously a good menu again. The meal ended with tea, coffee and chocolates. Soft drinks, juices and donated wines were offered before and during the meal.

As usual we found lots to talk and laugh about, making it a good start to the winter season. The 200 Club Draw for October and November took place after the meal.

The next Social Lunch is planned for 1st April 2014 – details nearer the time – please come and join us then.



TUESDAY CHAT



Our last Chats were held on 17th September, and 22nd October and were well attended. As usual the tea was plentiful, the cakes were delicious and the chat was entertaining.

Our next get-together will be on Tuesday 17th December 2013 at 2.30 pm in the village hall. This will be a Christmas themed occasion with a Christmas tree to be decorated for the exhibition in St Andrew's Church on 22nd December. All are welcome to join us just bring £1.50 towards the rent.

We have also planned two Tuesday Chats for early 2014 - Tuesday, 21st January and Tuesday, 25th February.

WHILTON VILLAGE HALL 200 CLUB 2013/14

Oct 2013

1st Prize

039

C Phillips

2nd Prize

153

S Bennett

Nov 2013

1st Prize

069

G Haynes

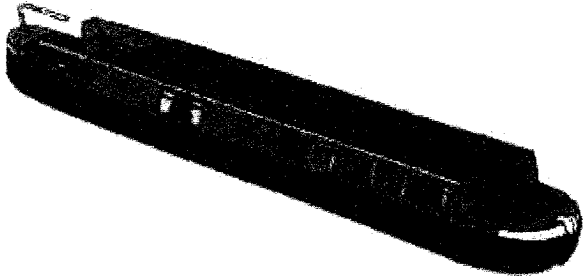
2nd Prize

185

G Heeley

Congratulations to all the prize winners

Wonderful Whilton Locks



This poem has been sent in by Geoff Woodward of the Locks Association. He has no information about its author or date, and we would be interested to find if any of our readers are able to enlighten us. Perhaps it has a tune.

There's a wonderful place in old England,
Down by the Grand Union Canal.
The folks here ain't wealthy or grand,
And everyone calls you their pal.

*Wonderful, wonderful Whilton Locks,
Bless your little cotton socks!
We'll never leave you stuck on the rocks
At wonderful, wonderful Whilton Locks.*

It's a place that gets better and better,
The longer you stretch out your stay,
And if you fall in and get wetter
You know that you'll float back some day.

As well as the cut we've got main roads
And trains running by the M1.
The people who pass by in boatloads
All say it's the best place for fun.

When enough of the wide world you've savoured,
And you're fed up of fortune and fame,
You'll admit that the place you have favoured
Is those Locks on the Grand Union plain.

A Puppy's Christmas

It's the day before Christmas
And all through the house
The puppies are squeaking
An old rubber mouse.

The wreath which had merrily
Hung on the door
Is scattered in pieces
All over the floor.

The stockings that hung
In a neat little row
Now boast a hole in
Each one of the toes.



The tree was subjected
To bright eyed whims,
And now, although splendid
It's missing some limbs.

Janet Bowers

A poem sent in by Olive Bardell- Tillott:

I catch them and hold them.
"Be good," I insist.
They lick me, then run off
To see what they've missed.

And now as I watch them
The thought comes to me,
That theirs is the spirit
That Christmas should be.

Should children and puppies
Yet show us the way.
And teach us the joy
That should come with this day?

Could they bring the message
That's written above,
And tell us that most of all
Christmas is love.



Vintage Ted, written by Mavis Carroll:

He's maybe not as valuable
As other bears I've seen
But other bears have never been
To places he has been.

Up to his neck in soap suds,
He was scrubbed – then rinsed and dried,
He didn't even whimper, but
Inside he must have cried.

He lost his growl. He lost an eye
But his resolve was plain,
He'd be my faithful furry friend
In sunshine and in rain.

A pensioner now, his joints are stiff,
Yet he will always be
A little cub – forever young
Through all eternity.





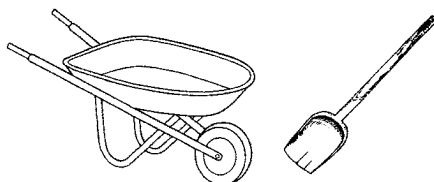
ROUGHMOOR SPINNEY



The Spinney Management Group AGM was held on 2nd November. The group manages the Spinney on behalf of the parish.

Griff and Joan Davies of Roughmoor Grounds gave the Spinney to the parish as a Millennium gift for the year 2000. It is just over 2 acres of wet woodland with a stream. For centuries a public footpath has crossed the Spinney, but through the work of the Management Group and volunteers from the village, this little wood has been made more accessible, the crop of hybrid black poplars has been removed and native woodland has been encouraged, with many new trees beginning to grow here. The trees and plants which thrive are those which enjoy their roots being in damp ground, including alders, willows and ash.

Because of the moist conditions, one of the tasks is to improve the path, making it less boggy, and we are doing this by laying granite chippings, for which we have received money from the County Council through Councillor Steve Osborne. Over the next few months this work will be ongoing, and there will be some work parties. Please watch the notice board for details of this, and do come and join in, preferably with a wheelbarrow and shovel.



AN OPPORTUNITY FOR SPINNEY VOLUNTEERS

The Spinney owes much to Derek Brown, the first chairman, for his enthusiasm and commitment to the project. Active members of the group continue with his task, keeping the Spinney safe and accessible, but we are now looking for two new members, to replace Derek and also Jo Grant, who has resigned due to other commitments.

We also need a volunteer to replace Shirley Brown as secretary of the Management Group, which usually meets once or twice a year. Shirley will remain on the group and will be willing to assist the new secretary.

If you are interested in helping in work parties or being part of the management group, please contact:

Shirley Brown, secretary, 842968 or
Anthea Hiscock, chairperson, 843319.



Young Voices

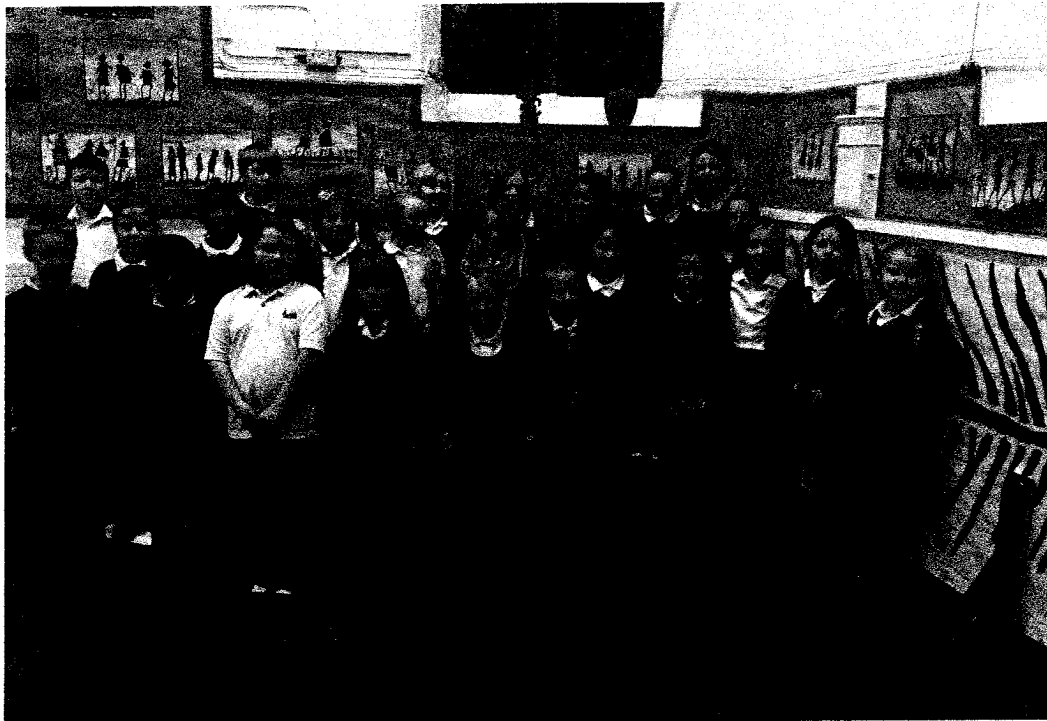
On January 14 2014, four children from Whilton will be singing at the LG Arena in Birmingham as part of the Young Voices series of concerts.

Young Voices is the largest school choir organiser in the world, which brings together more than 2,500 schools and 90,000 children in capacity concerts throughout the UK and Ireland.

Young Voices will be hosting one of their concerts in Birmingham and pupils from the Athorp Federation of Primary Schools (Brington and Harlestone schools) will be just two of the schools attending.

Hannah Baker, Maria Healey, Georgia Hathaway and Louise Whitcombe are the four Whilton children who will be singing with the Brington and Harlestone school choir at the concert, and they have been regularly rehearsing their songs including Mr Blue Sky, Lean on Me and You Raise Me Up on Monday afternoons after school for several weeks.

At the concert they will be joined with a live band and vocalists; Young Voices have previously seen singers including Katherine Jenkins, Lemar and Joss Stone perform with the children. We shall wait to see who will be joining them in January, one thing is for sure though, this will certainly provide an experience the children will remember a lifetime.



NEWS FROM BRINGTON SCHOOL – November 2013

CREATIVE CURRICULUM

The Creative Curriculum topics are continuing really well. The older children are learning so much about Africa including its history, geography and art. There is some wonderful work being done both in school and at home and the children have been really inspired by the topic. Class one in their All about Me topic have moved on to toys and are busy finding out about toys in the past as well as today's favourites!

Just before half term we held a Marvellous Middle event for the children from both schools and had a great day designing, making and marketing a new fruit drink. So many people helped to make the day such a success and special mentions go to; Mr Grogen and his team of 6th formers from Guilsborough School, who came and shared their own juice making project and television adverts at the start of the day



and then stayed around all day to help with the activities; Simon Derrick and Sue Brightwell from Blue Skies who came and supported the day and provided us with kilos of prepared pineapple, mango and papaya and freshly squeezed juices; Will Mountain, (young chef of the year 2012) from the Saracen's Head who demonstrated how to prepare fruit, and last but not least three members of the Blue Skies team in

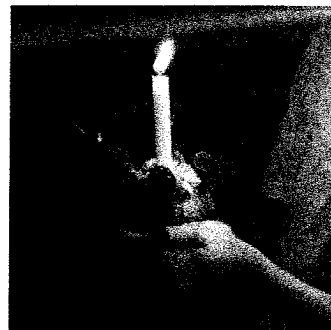
Africa (2 from Ghana and 1 from Senegal) who were over for a funeral but found time to come and answer the children's questions about Africa and the fruit preparation business. What a day!

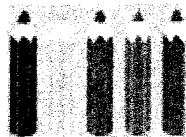
Next term's topic for Key Stage 2 is 'We'll Meet Again' and the children will be learning all about war time Britain. They would be delighted to hear from anyone who has memories or artifacts from that time and who would be willing to come into school and share them. If you can help, please contact the office on 01604 770286. Many thanks

CHRISTMAS

We are busy making preparations for the Christmas festivities which will include a trip to the Panto, Christmas dinner, party and our Christingle service and performance at St Mary's church.

With very best wishes for Christmas and the New Year from everyone at Brington Primary School.





Brington and Whilton Pre-School

INVITE YOU TO JOIN THEM AT THEIR CHRISTMAS CONCERT

At WHILTON PARISH CHURCH

ON FRIDAY 13TH DECEMBER 2013 FOR A 10.30 A.M. START

AND

AFTERWARDS FOR COFFEE AND MINCE PIES

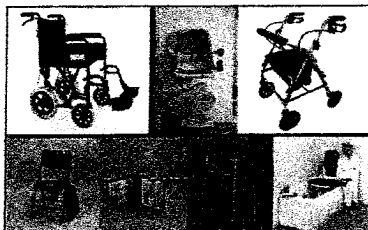
IN WHILTON VILLAGE HALL.

Start your Christmas season with a nativity play
and singing by the children of the Pre-school.

The children have worked hard to learn lots of new songs and
will look the part as they dress up in nativity costumes.

From January 2014, there will be extended hours for the Pre-school children
aged 3 and 4 on Wednesdays, when the session will last until 3 p.m.

★ MOBILITY AIDS REALLY DO MAKE LIFE EASIER. WE CAN GIVE YOU ADVICE ON EQUIPMENT NEEDED ★



Pride Scooter Stockists

DACT Shopmobility is ideally situated for shoppers using the Town Centre. Easily accessible by car, bus or taxi, Shopmobility offers you the freedom and independence to get around the centre of Town.

Current Opening Hours Mon Tue Thurs Fri 9.30 am to— 3.30 pm. Wednesday: 9.30 am to 1.00 pm

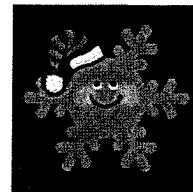
We sell new Scooters & Wheelchairs Ferrules, Zimmer's, Rollators, tri-walkers, long-handled shoe horns, bathroom equipment, non-spill cups, wheelchair & scooter accessories and most other mobility aids. Come and look around our shop; if you cannot find what you are looking for we are able to order it. If it's anything to do with mobility we can get it for you; we also supply larger items such as Stair lifts & Recliners. Shopmobility also has a small range of 2nd-hand equipment – donations always gladly received. We also arrange services and repairs at our PIT STOP Service Centre . Annual servicing also carried out.

By shopping at DACT Shopmobility you financially support DACT

DACT Shopmobility New Street, Daventry, Northants NN11 4BS Tel: 01327 312555



Fun Stuff



With Christmas just a few weeks away, and we're back to wearing our winter woollies again, we've got some tips on building the perfect snowman (or lady) just in case we see some of that fluffy white stuff again.

How to make the perfect Snowman (or Lady)!

1. Make sure you are wrapped up warm!
2. Get a spade (or snow shovel if you have one) and gather a big amount of snow together to make a big pile – the bigger the pile, the bigger the snowman.

TIP – If the snow is too fluffy to stick together try adding a splash of water to it.

3. Smooth the pile and press it together to make it solid.



It's snowing!!! Get outside and enjoy.....

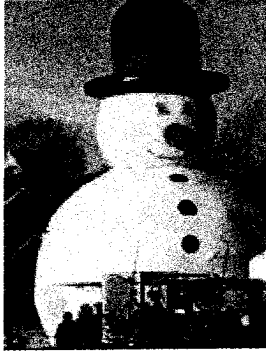
- Snow painting with bottles of water & food colouring.
- Building a snow castle.
- Freezing some black paper then watch snowflakes land on it – look through a magnifying glass to see the different shapes.
- Feeding the wildlife.

4. Next the head; make a normal snowball and roll it around in the snow until it makes the right size head for the body (too big and it will fall off).
5. Use coal, vegetables, stones, or coins to decorate the snowman's face.
6. Use some sticks for arms, and dress him with hat, scarf and buttons.
7. Finally – take a photo – he won't last for long!!

WINTER AT WHILTON LOCKS

Whilton Locks Garden Centre has special plans for the Christmas and New Year season.

These include a visit from Santa and his reindeer on 1st December. There will be an **undercover synthetic ice rink** until 7th January. 45 minute sessions can be pre-booked on 01327 843100.



You can also have a 10 minute bounce on **Frosty Our 50 foot Blow-Up Snowman**, with the option of a kid's meal too.

Bookings are being taken now and there are discounts for groups. (843100)

There will be **late night shopping** until 8 p.m. on Tuesdays and Thursday until 7th January.



The Lockgate Café at **Whilton Marina** will be serving four course Christmas dinners on 21st and 22nd December.

If you would like to book, please telephone; 01327 842017.

WHILTON POLICE REPORT

Our PCSO Sarah Gray has provided a very encouraging autumn report, when the October figures showed no crimes occurring in Whilton.

If you do need to contact the Police in an emergency you should still dial 999. The national non-emergency number is 101.

PCSO Sarah Gray 7207 is part of the Daventry Rural Safer Community Teams Northamptonshire West Area, Northamptonshire Police
Telephone: 101 Mobex 778156 Mobile 07557 778156
.....



DOG FOULING

Instances of dog fouling are occurring again in Whilton.

Dog owners are reminded that it is an offence to allow dogs to foul in public places, such as footpaths and pavements.

UPDATE FROM ROCHELLE

Well I have actually been incredibly busy recently, doing all sorts from looking after Sasha, to getting a promotion and doing incredibly well at short hand.

So as many of you know my dad had an operation a couple of months ago. Of course that meant no waling Sasha for a week, which meant that I was handed over the lead, quite literally and obviously it was either going to go two ways I would either get dragged down the village, quicker than a flash, or I would be stopped dead by a dog that refused to walk. During the week I ended up getting a mixture of the two. I'm not sure who was more frustrated.

You may also remember that I have been working at Next in Northampton Town, for over a year now and I can now very happily say that I have been given a small promotion. I am covering for a colleague of mine, who is on maternity leave. So I now work full time and am Head of the Men's department. I work alone, which is actually really nice, because it means I can get on with my jobs. Although it does have its down sides, such as its really impossible to get a free member o staff to help out every now and then.

I have two days off a week, which are Sundays and Wednesdays.

The Sundays give me a chance to have a bit of me time and the Wednesdays are for me to go to Shorthand. It's going very well at the moment. I have completed the theory and am now building up speed. I am writing this having just come back from a session where I have managed to complete my first ever 70 words a minute passage and tried (and hopelessly failed) an 80 word a minute passage. I am really enjoying it but fear I have a long way to go until I get to 100 words a minute and am able to take my exams. I am not sure whether or not a made a foolish decision in deciding to sit just one exam, which is the full 100 words a minute, rather than doing several at speeds leading up to the 100 mark. Only time will tell I guess.

I am still enjoying my odd hobbies here and there.

I had a fantastic holiday and someone definitely made a wish for me as my mum and I were approached to be part of one of the parades at the Animal Kingdom theme park.



We got a little outfit and also got to see behind the scenes of how it was all put together, before the parade was shown to the people.

There was lots of smiling and waving on our behalf and it was really funny to see these entire strangers wave back to us as well as their beloved Disney Characters.

I met some of my heroes too, so it was really difficult to come back to reality.

And finally, seeing as our issue has a musical a theme I thought I would write a little bit about what it is like to be in the Whilton Warblers Choir. As I am sure I have mentioned before singing is a great passion of mine, so it is really lovely to feel a sense of belonging when it comes to Tuesday nights.

What is so lovely about the choir is that you end up singing songs that you have known and loved and songs that are completely new.



Our first concert was amazing and filled me and I am sure my other choir members with such a sense of achievement and joy. In fact I have enjoyed it so much that I have elected myself and been sort of pushed by other members to do a solo in our concert in December. It's a beautiful song called Hallelujah, which some people may know from the film Shrek or from artists such as Jeff Buckley and Alexandra Burke.

ASH TREES IN THE SPINNEY

Roughmoor Spinney was once part of the Thornton estate in Brockhall. During the late 18th and 19th centuries the Thorntons planted a number of spinneys to screen views of the new canal and railway, and also as cover for game. Sometimes the spinneys made use of land which was too wet to be useful as pasture or arable, and this is probably the case in this little wood.

There was also a very practical need for spinneys, as they provided wood which was essential in the farming of the period. The Thornton woodyard, which processed their timber has now become the Heart of the Shires Shopping Village beside the A5.

Ash wood was prized for its strength and flexibility. It was claimed that ash timber is so elastic that a joist of it will bear more before it breaks than any other native tree. Ash was coppiced to produce many items including poles, for gates and fencing, tool handles, ladders, carts, hurdles, hoops and crates. The excess ash timber harvested on the Thornton estate was sold for profit.

Roughmoor Spinney today still has the descendants of ash trees coppiced here for the Thornton estate. We hope that the much publicised ash die back disease will not reach this area and affect them.

Sasha's Column

I've had a very confusing couple of months recently. Dad wasn't allowed to walk me for a while so mum and Shell had to walk me. They don't understand it is Dad's job to walk me and I wasn't going to settle for anything less.

Mum was the first to try and I managed to stop dead as soon as I crossed the road. Nothing would convince me to walk down to the bottom of the village not even for a doggie treat. So it was back home for us.

It was Shell's turn next, I thought it was all rather fun, so I pretended that I was willing to walk. "Yes," I heard Shell say. "I don't see why mum had a problem walking her, she's walking fine." You know sometimes I think I am a genius. It's like I know and understand exactly what she is saying and with that I slammed on the breaks. Of course because I refused to walk I was getting board, so Mum and Shell decided to make some fun and games in the house.

It was all to my advantage really, I got a lot of new toys which I take all around the house with me. They have become my new favourites. If there is one way to a dog's heart, well OK, my heart, it's a doggie treat, chicken or a new toys.

Now dad is better I am back to walking although they aren't quite as long and if you are reading this Dad, I promise I am not complaining. We can keep them short, it is all fine.

I am looking forward to the big day in December, although I have been informed that we aren't having Big Chicken (Turkey) this year, instead we are having a three bird roast. I am not sure whether this is a good or bad thing. I mean, it is three for the price of one but then again it doesn't look like a Big Chicken.

I hope to see you all in the New Year and if you ever bump into me, remember you can always give me suggestions on what you would like to hear about in next year's editions.



WHILTON PETS



In the spring issue of the Newsletter we shall be starting a new series about pets who live in Whilton.

If you would like your pet to be featured, please contact one of the editors.

FEBRUARY

Shakespeare had his own ideas about the miseries of February:

"Why, what's the matter,
That you have such a February face,
So full of frost, of storm and cloudiness?"
(From *Much Ado About Nothing*)

However, we hope that by Valentine's Day we shall be cheering up, especially if we try this recipe.

CHEESY HEARTS FOR VALENTINE'S DAY, 14TH FEBRUARY

Ingredients

100g Cheddar cheese
25 g butter softened
50 g plain flour
 $\frac{1}{4}$ teaspoon baking powder



Method

1. Put all the ingredients in a food processor and whizz until everything comes together in a dough. If still crumbly, press together to shape into a ball.
2. Wrap in clingfilm and leave to rest in the fridge for 15 minutes.
Heat oven to 200° C.
3. Roll out the dough on a floured surface until about 3mm thick.
Using a heart-shaped cutter cut out shapes, or cut freehand hearts with a knife.
4. Line a baking sheet with baking paper, and place heart shapes on it.
5. Bake for about 10 minutes or less, until hearts are golden brown.
6. Leave to cool on a wire rack before eating...

and finally....

To while away the winter nights and to complement the musical theme, why not try your hand at the quizzes below.

Musical Anagrams

1. Supersonic
2. Ricoh
3. Sumanici
4. Trustmenin
5. Thyrrhm
6. Restarcho
7. Lovca
8. Rilscy



Winter Wordsearch

Snowflake	Robin
Jack Frost	Crisp
Thermals	Holly
Sledge	Gloves
Hibernate	Ice

S	C	N	J	S	O	K	E	W	D	G	A
J	E	T	A	N	R	E	B	I	H	R	C
A	S	N	O	R	W	T	H	C	L	O	K
C	S	L	A	M	R	E	H	T	H	B	S
K	O	N	W	F	H	B	L	O	L	I	P
F	L	F	O	S	L	E	D	G	E	N	S
R	O	B	E	W	R	N	L	T	V	E	F
O	S	M	R	H	F	T	A	E	C	I	O
S	A	L	F	H	O	L	L	Y	T	C	B
T	D	E	G	D	C	E	A	C	N	E	R
S	C	R	I	S	P	H	O	K	G	L	F
O	N	B	E	G	G	L	O	V	E	S	R

WHAT'S ON IN WHILTON? WINTER 2013 - 2014

<u>DAY</u>	<u>DATE</u>	<u>TIME</u>	<u>PLACE</u>	<u>EVENT</u>
Sun	1 Dec	10 a.m. 11 am- 4pm	Harlestone Garden Centre	Benefice Eucharist Visit of Santa and his reindeer
Wed	4 Dec	7.30 p.m.	Village Hall	Gardeners Association : Christmas Supper
Sun	8 Dec	11 a.m.	Church	Holy Communion
Wed	11 Dec	7 p.m.	Village Hall	Parish Council
Fri	13 Dec	10.30 a.m. 7.30 p.m.	Church Church	Pre-school Christmas concert Whilton Warblers Christmas Concert
Sun	15 Dec	9.15 a.m. 4 p.m.	Church Lockgate Café	Worship for all Christmas Raffle Draw
Tues	17 Dec	2.30 – 4 p.m.	Village Hall	Christmas Tuesday Chat
Sun	22 Dec	6 p.m.	Church	Christmas Tree Festival and Carol Service with Christingles
	25 Dec	9.15 a.m.	Church	Christmas morning worship
Sun	29 Dec	8 a.m.	Church	Holy Communion
Sun	5 Jan	10 a.m.	East Haddon	Benefice Eucharist
Tues	7 Jan		Garden Centre	Last day for skating and bouncing in snowman
Wed	8 Jan	7 p.m.	Village Hall	Parish Council
Sun	12 Jan	6 p.m.	Church	Evening Communion
Sun	19 Jan	9.15 a.m.	Church	Worship for All
Tues	21 Jan	2.30 – 4 p.m.	Village Hall	Tuesday Chat
Thurs	23 Jan	7.30 p.m.	Village Hall	Local History Society: The story of Roughmoor
Sun	26 Jan	11 a.m.	Church	Worship for All
Sun	2 Feb	10 a.m.	Church	Benefice Eucharist
Wed	5 Feb	7.30 p.m.	Village Hall	Gardeners Association AGM and Quiz
Sun	9 Feb	6 p.m.	Church	Evening Praise
Wed	12 Feb	7 p.m.	Village Hall	Parish Council
Sun	16 Feb	9.15 a.m.	Church	Worship for All
	20 Feb			Last date for Newsletter contributions
Sun	23 Feb	11 a.m.	Church	Worship for All
Tues	25 Feb	2.30 – 4 p.m.	Village Hall	Tuesday Chat

Other weekly events during term time include:

Monday, Wednesday, Friday: 9.30 a.m. Brington and Whilton Pre-school in the Hall

Monday: 7.45 p.m. Bell ringing at the Church

Tuesday: 7.15 p.m. Whilton Warblers Choir in the Church

The Whilton Newsletter is published quarterly and circulated free to every household within the parish boundary. The costs are met by the Parish Council.

The Editors are:

- **Anthea Hiscock, Langton House, Main Street.
Telephone: 01327 843319
e-mail: anthea.hiscock@tiscali.co.uk**
- **Karen Whitcombe: Inglenook, Main Street
Telephone: 01327 843544
e-mail: karen.whitcombe@cummins.com**
- **Rochelle Lye, 1 Langton Rise
Telephone: 844181
e-mail: rochelle@btinternet.com**

We would be very happy to welcome another member on to the editorial team. If you are interested, please contact any of us.

The Editors welcome material for the Newsletter. If possible, please send your contribution by e-mail. If you do not have a computer, the editors will be happy to type handwritten articles for you.

The next issue will be the Spring Edition, covering March – May 2014 . The last date for contributions will be 20 February 2014.

The Newsletter is published quarterly, but Whilton also has a website – www.whilton-village.net. This contains details of the organizations in the parish, previous Parish Council Minutes and Newsletters and a comprehensive Picture Gallery. It also has latest news and updates on parish events.

If you would like to advertise your local business, flyers can be delivered to every household in the parish with the Newsletter at a small charge. For information please contact one of the editors.