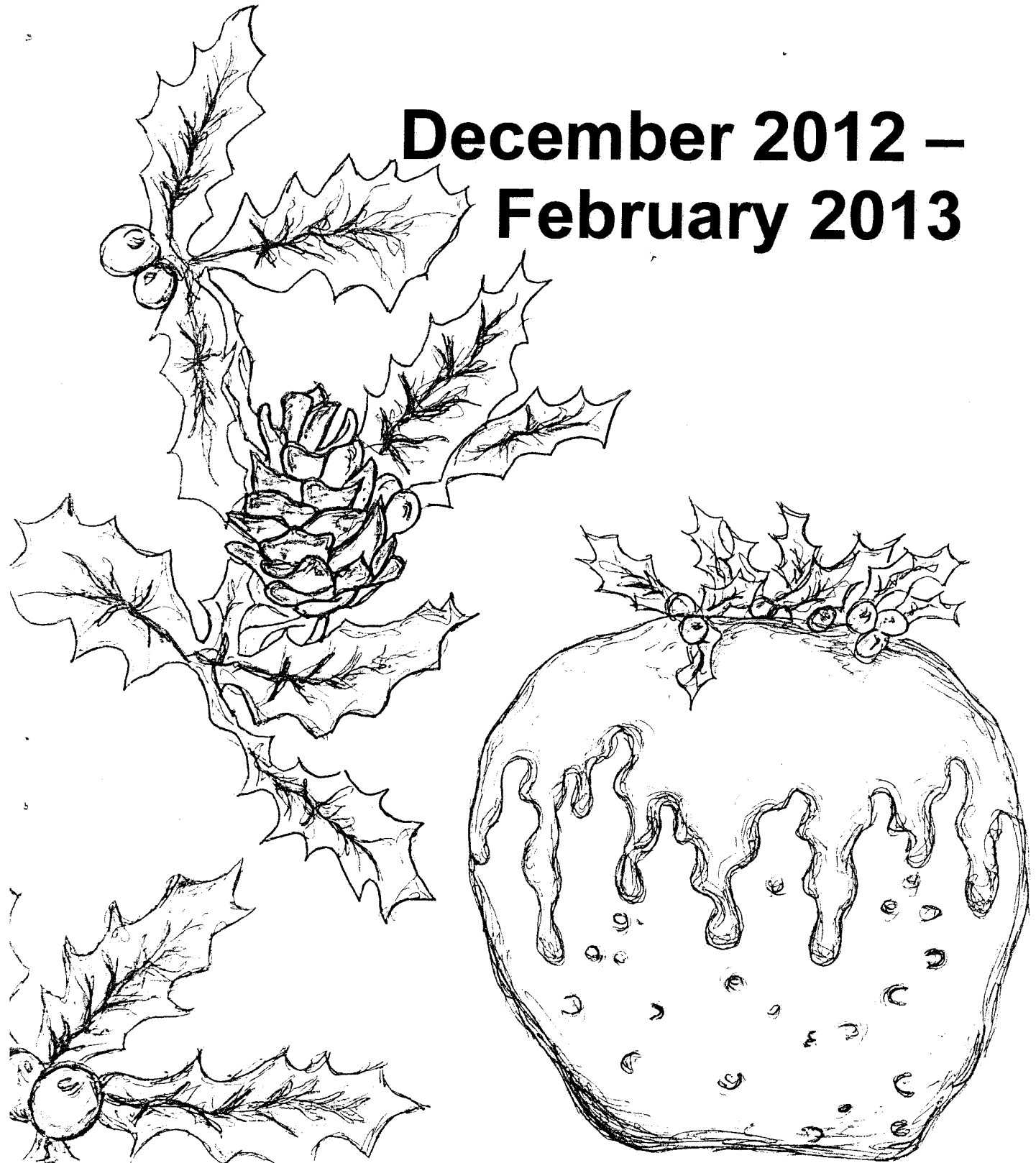
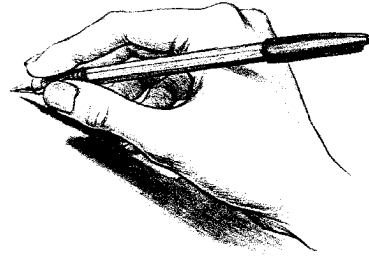


Whilton Winter Newsletter

December 2012 –
February 2013



*Letter from the editors....
December 2012*



After a very wet summer and a saturating late autumn, this issue looks forward to the period of short winter days. We hope that some of those brief days and dark evenings will be brightened by the opportunity to join in activities which will be taking place in our community. There is also a puzzle to solve over the Christmas holidays.

We would especially like to thank Lily Cuthbertson of Orchard House, who has supplied the art work for the winter cover.

The Christmas season will bring events at the church, bell ringing and village carol singing, and planned activities for early 2013 will be found in these pages.

Sadly we have to report that Teresa Leadbetter is retiring from editing the Newsletter. We thank her for all her contributions. If you are interested in becoming an editor, please let us know.

We wish all our readers a very peaceful Christmas and a Happy New Year.

The Editors

NEWS FROM THE PARISH COUNCIL

The wet summer and autumn played havoc with the drainage in Whilton. MGWSP Northamptonshire Highways carried out the bypass of the drain that keeps blocking up on the bend in Brington Lane, near Holly House, but unfortunately the woes continue as water now gush out of the next drain down, in the vicinity of Ash Lea and Rustlings where there appears to be a further blockage. I've reported the matter to the authority but, as you know, the wheels turn slowly and you should exercise extreme caution when driving in that area during the winter.

You may have noticed that one side of the finger sign had been broken off and we would like to applaud the culprit for owning up and paying for the repair, which took a lot of courage. As mentioned before, the council is very serious about its zero tolerance to anti-social behaviour and especially criminal damage to property, but it is not all doom and gloom. We realise that there is not a lot for youngsters to do in the village and, as a trial, we have included a small amount in next year's budget, coming into effect in April 2013, to assist youngsters in getting to and from local events they would like to attend.

Although we had hoped to upgrade the remaining 12 lights from 80-watt to more energy efficient 36-watt lanterns in 2013/14, the impact on the budget and your council tax would have been totally unacceptable. So, we've pared the budget to the bone and decided to upgrade only 6 of the 12 lamps in the coming year to minimise the impact on the budget. Fortunately we were able to make arrangements with E-On to save the 80-watt lamps from the 6 lamps to be upgraded to be used in case their stock of 8-watt lamps run out before we are able to replace the remaining 6 lamps in 2014/15. Although the budget will only be approved at our January meeting, at this time it would seem that the budget increase is likely to be around 5%. We promise to be very frugal and effect as many savings as possible during the year to offset against the final upgrade next year.

All that remains now is for me is to wish all of you a very peaceful and blessed Christmas and everything of the very best for the New Year on behalf of the parish council.

Erica Fothergill
Clerk/RFO
Whilton Parish Council

STREET DOCTOR

If you wish to report a problem connected with the roads, this can be done through the online reporting tool at www.northamptonshire.gov.uk/streetdoctor.

If the problem is categorised as an emergency then the phone number will appear for people to ring instead, but the County Council wants people to report problems online where possible.

Whilton Local History Society

The society met on 13th September, when the subject was “**Who was who in South View?**”

After 1946 there was a drive to replace devastated urban housing, and improve rural dwellings. Clement Attlee built over a million homes, 80% of which were council houses. By 1948, 2000 houses had been built in Northamptonshire, but older housing stock was poor. Daventry Rural District was typical of the county with a quarter of its houses inspected being declared unfit for human habitation and beyond repair. Whilton was not alone in having no provision of mains water, electricity or sewerage, and much rural housing was damp and pest-ridden. Lack of agricultural labour emphasized the need for council housing.

The site for the first Whilton houses was acquired by August 1946. Other sites had been considered, and the area of the modern allotments was purchased too. Eight houses were built on what had previously been glebe-land, overlooking the valley once known as Deepdale to the north. There was some controversy over naming these houses, as the suggested “Townley Row”, after RD Councillor Townley, was not popular. The village protest was even recorded in the national press, with the caption: “Row over a row”. Deepdale or Glebe View might have been more appropriate than the compromise of “South View”.

By April 1946 plans for six houses at Whilton were approved. Type B were priced at £2,509./16/1 ½ d per pair; Type E were £4,882/5/1d per block of four, although Major Fancott of the RDC said the prices must be reduced. In October the Housing Committee recommended building four houses for the agricultural population at Whilton. These completed the council housing for Whilton. Plans to build more never came to fruition, mainly because villages with better services were considered more suitable for development. Thus Whilton has 9 and 10 The Gardens, but numbers 1 to 8 were never built.

The first South View houses were built by the local firm Holland and Marks, the Marks family coming from Whilton. Jack Wright worked for them as a carpenter and joiner. Jack and Kathleen Wright and Don and Vi Welch were the first tenants, the Wrights moving in on 28th February 1948.

The builders struggled to complete with post-war shortages in labour and materials, including grates, window frames and chain link fencing. In May 1948 the Housing Committee was dissatisfied with the progress of construction. After discussion the builders promised, “that one house would be completed in a fortnight, one in a month, one in five weeks and the fourth in eight weeks from the date of this meeting.”

In Whilton, as in many villages in this district, the council houses were built before modern services arrived. Pipes and taps were provided and water pumped up from a farm spring, although much of the village still depended on wells or stand pipes introduced in the war. There was no public sewerage,

the septic tank in Number 1 serving all of South View. Other villagers were still disposing of buckets of night soil until 1953. In 1947 it was noted that the Whilton houses would be fitted with cast iron independent coppers as electricity was not available in the parish. The houses were wired for electricity, which finally arrived in 1951.

These houses were much sought after. Priority was given to returning service men and agricultural workers. On the whole these ground rules were kept. Men from the services moved into the first four, and the fifth was let to the widow of Oliver Adams, who had died at Arnhem. All of these had young families. Number 6 was for the large Poole family, who had had to leave the village in the previous year. In vain, they complained that their four bed-roomed house was too small. Number 7 was let to Arthur Gittins who worked on the Emery farm. The letting of Number 8 to farmer's son, Frank Ashby, rather than an employee, caused some protest, and he was forced to pay a higher rent.

Residents have happy memories of childhood freedom, and of playing in the wilderness on top of the high bank at the front. This overhung the narrow lane into Whilton. Children made dens and tracks and swung from the overhanging trees, scaring motorists below. Eventually the County Surveyor noted that, "Along this length of road there is a steep bank and high hedge. The Parish Council are concerned about the safety of children who play on this bank." By 1966 the ownership of the bank was transferred to the County, the bank and hedge were removed, the road widened, and the bank shaved back, giving the modern frontage of today.

Memories abound, from the thrill of having a first bathroom, to gatherings of young men with motorbikes, and neighbourly support in times of illness. There was irritation over the tenant who climbed his apple tree to see what was happening over the fence and amusement that chickens kept for the pot lived to a good old age with the duck.

Of the ten council houses, only two are now rented. Otherwise tenants took advantage of Margaret Thatcher's "Right to Buy" scheme between 1980 and 1998. Kathleen Wright is proud to be the one original resident; four houses are occupied by families or their descendants, who were there fifty years ago, but whereas the first residents all had children, there are only two teenagers today, a reflection of changing times.

South View and The Gardens marked a step towards modernisation for Whilton, and a huge improvement in living conditions for those fortunate enough to be the early tenants. The residents have played an active part in parish life for over 60 years. They have produced Parish Councillors, W I members, gardeners, allotment holders, and produce show winners. Over the years there has been much kindness, and some tolerance, and still today there is a co-operative spirit, which reveals itself particularly in mowing the grassy bank, looking out for one another, and pride in the appearance of South View.



*Christmas
Bazaar
in aid of
Mind*

Saturday 8th December 2.00 - 4.00 pm in Whilton Village Hall

Stalls to include:

Handcrafted tree decorations, Homemade cakes, Christmas wreaths, Alpaca & woollen handknitted items, Tombola, Handmade jewellery, Handmade cards, Handmade stained glass tealight holders

Entry £1 to include a drink, a cake (donated by Mr Kipling) and a raffle ticket

Please contact Michaela on 07738 112 927 for more information or to offer donations.

FAMILY NEWS

We congratulate Elliot Patching, son of Jenni and Richard Patching of the Thatched Cottage, on his marriage to Stephanie Sierwald.

The wedding took place on Friday 12th October 2012 at St Andrew's, Harlestone. The beautiful service was conducted by Rev Sue Kipling, and was followed by a reception at Dodford Manor. Stephanie was attended by five bridesmaids, who included her sister, Samantha, and Elliot's sister, Harriet.

Best men were Ben Tompkins and Fred Newborough, who have been friends since the days when they attended Whilton Playgroup with Elliott.

We congratulate Jaimie Ashby and Michaela of 9 The Gardens on the birth of their son Ethan Edward on 8th September.



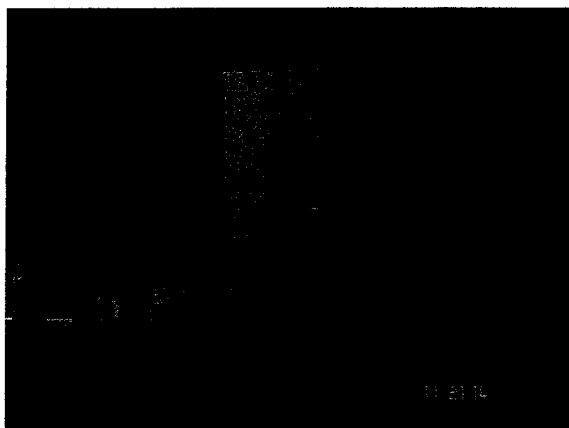
A wedding photographer himself, Elliot has lived in Whilton from birth.

We wish Elliott and Stephanie every happiness in their married life.



We would also like to wish good luck to Paul Heard, Sonya and the three boys Josh, Ethan and Oliver, as they leave Field View in Whilton and move to a new home. They will be missed by their friends.

ST ANDREWS WHILTON CHRISTMAS LIGHTS

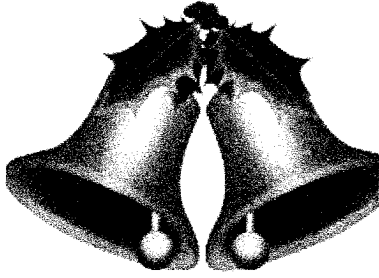


This year we are once again giving you the opportunity to light the Church and make it a focal point of the village during the Christmas period. Cost is just £10 a night.

To reserve your special day or to select a date, please contact either Janet Bowers (842851) or Jon Brierley (843380)

11 DECEMBER	JON AND HELEN BRIERLEY
12	
13	
14	
15	
16	
17	
18	
19	
20	
21	
22	
23	
24	
25	
26	
27	
28	
29	
30	
31	
1 JANUARY	
2	
3	
4	
5	
6	

Whilton Ringers' News



The average age of Whilton ringers has dropped dramatically over the last couple of months. This is because we are delighted to be teaching five children from Brington Primary School and two who attend Champion School. They are progressing really well and we are looking forward to ringing before the 'Champion Cluster' Primary Schools Christmas Carol service at Bugbrooke. We will also be ringing at Whilton for our Christmas services.

We are always keen to welcome new people of all ages to our practice. If you would like to have a go at ringing or would just like to watch the ringers in action, please come along on a Monday evening from 19:45.

Justin Baker
01327 844 263; j.t@lineone.net

Ever wondered how bell ringing 'works'?

Once the basic handling of the bell has been mastered and a ringer can ring in with the rest of the band, the best way to consolidate learning to ring Bells is to ring for an extended period. The smallest recognised time to ring is called a Quarter Peal. This is normally some 1200+ changes (meaning the number of times each Bell sounds) and will take approximately 50 minutes to ring at Whilton. The objective of a Quarter Peal is to ring the 1200+ changes without stopping between each pull of the Bell. The order of ringing (sounding) each Bell changes from one 'stroke' (swing) of the Bell to the next. The art is to make sure that this change is timed with all the other ringers to be even and not 'lumpy' or syncopated.

The simplest form of 'change ringing' is the method 'Plain Hunt', which is shown in the diagram on 6 bells. Here each Bell has a number from 1 to 6; 1 being the smallest (Treble) and 6 being the largest (Tenor). The diagram shows the order the Bells ring on each row (left to right). The 1 has been replaced by a line and 5 has been highlighted so a 'pattern' can be seen more easily. Like reading a book, the method is read left to right, top to bottom. The order starts as 123456 (rounds) and finishes 12 rows (changes) later again in rounds. A Quarter Peal has 1200+ rows and a full Peal has 5000+ rows. Obviously the number of Bells being rung has a direct effect on the number of repeat rows. On 5 bells the number of changes is $1 \times 2 \times 3 \times 4 \times 5 = 120$. This is called an extent. Therefore to ring a Quarter Peal, 10 extents would be required. On 8 bells there are $1 \times 2 \times 3 \dots \times 8 = 40,320$ changes in one extent – so a full peal can be rung never repeating the same row twice.

Plain Hunt on 6					
	2	3	4	5	6
2		4	3	6	5
2	4		6	3	5
4	2	6		5	3
4	6	2	5		3
6	4	5	2	3	
6	5	4	3	2	
5	6	3	4		2
5	3	6		4	2
3	5		6	2	4
3		5	2	6	4
	3	2	5	4	6
	2	3	4	5	6

For Whilton Beauties!

How times have changed. These beauty tips, mostly from the 19th and early 20th centuries, are not to be taken seriously.

1. Every well-sexed woman desires a beautiful, well-rounded bust. As the emotions affect the female organs, and as these affect the bust, it is essential to refrain from indulgence in anger, grief, worry and jealousy. *Source: My Lady Beautiful, Alice Long, 1861*
2. The consciousness of being becomingly and artistically dressed brightens up the countenance wonderfully. Sometimes changing from common apparel to a beautiful tea gown cures indisposition. *Source: Facts For Ladies, Edited by Amy G Ayer, 1890*
3. Carry your head as if you were balancing something upon it. That does not mean to carry the neck as if trying to digest an iron rod. The neck should be well hinged, ready to turn independently. How few understand the grace of that movement! *Source: Facts For Ladies, Edited by Amy G Ayer, 1890*
4. It's about the eyes that age first shows. To rest the eyes, even while it's not possible to lie down, is an excellent preservative and may be done for a couple of minutes at any time in a street, car, train and at home. *Source: Health And Beauty Hints, Margaret Mixter, 1910*
5. Walking in the rain is an excellent tonic for the complexion. Just a 10-minute brisk walk in a steady downpour will make the blood circulate with vigour and give a delightful glow. *Source: Health And Beauty Hints, Margaret Mixter, 1910*

And these beauty tips from the same era are definitely not to be recommended:

1. Many ladies, in the secrecy of their own chambers on retiring at night, or at any point in the day, bind their faces with thin slices of raw beef or veal to feed the tissues of the face, with remarkable results. *Source: Facts For Ladies, Edited by Amy G Ayer, 1890*
2. This preparation [not specified here] for the eradication of freckles should be marked 'poison' and care should be taken that it does not touch lips or eyes. The sensation is the same as a severe case of sunburn. *Source: Facts For Ladies, Edited by Amy G Ayer, 1890*
3. For kissable white hands boil up soft soap, salad oil, mutton tallow, wine, and ambergris, pour the mixture into a large pair of gloves and wear them all night. *Source: The Ugly Girl Papers, Mrs SD Power, 1874*
4. For sparkling eyes make a daily eyewash by mixing a half-teaspoonful of boric acid and two or three drops of camphor with hot water. *Source: McCall's Magazine, 1920*
5. Trim your eyelashes every six months to promote their growth. *Source: McCall's Magazine, 1920*



The Good Old Days?

Perhaps if we are feeling chilly through the winter months, we should give a thought to the children and teachers of Whilton 80 years ago. The following are extracts from the School Log Book.

1930

- *School re-opened after Christmas. 30 children on register. 29 present.*
- *24th Jan ...our coal has mysteriously vanished. We had three tons in October and now we have practically none.*
- *29 Jan 1 ton of coal arrived, coal house empty.*
- *5 Feb School very cold this morning temp: 36° Fire not going well.*

1931

- *5 Jan School re-opened after Xmas holidays. I resume duties after motor accident.*
- *12 Jan No fires going. Temp 42° large room, 39° Infants. Walls wet. Took all first lesson to get a glimmer of fire. No real fire until 11 a.m. in large room, not much in Infants. Spoke to Caretaker in afternoon, told her how many times I have had to re-start fires and have not complained but that if rooms were cold as they were today children's parents would complain. She said, "I do not think so, what I think is that it is simply a bit of fuss."*

NEWSLETTER VACANCY

Whilton Newsletter has been edited by a team of four for the last 18 months, and we hope that this can be continued. As Teresa Leadbetter has now retired, we are inviting a volunteer or volunteers to join us.

If you are interested in finding out more, please contact one of the editors. Our details are inside the back cover.



WHILTON GARDENERS' ASSOCIATION



Hi Everyone,

As I write the rain is again falling and I'm getting fed up with it, but now is the time to plan what changes, if any, you can make in your garden. Perhaps make more room for gardeners' friends such as hedgehogs, butterflies, birds, worms, etc. They all have a big input into the environment and especially in your garden.

On 3rd October Colin Lill, accompanied by his wife, gave us an interesting talk and hands on experience with hedgehogs: two cute males. One, only six weeks old, was christened Whilton in honour of his first outing. Aaah! Their dedication and commitment to saving hedgehogs and returning them to the wild over the past 25 years is to be commended. About 500 little lives have been saved by Mr and Mrs Lill.



There is still a decline in hedgehog numbers so if you have any questions or concerns about hedgehogs in your garden please contact Tiggywinkles (the world's leading wildlife hospital) on 01844 292292.

5th December – this is the Members' Christmas Supper and Social, starts at 7.00 pm in the Village Hall.

6th February – AGM and quiz in the Village Hall at 7.30 pm. New members are always welcome.

Please contact Olive on 07921 429228 if you have any queries.

WHILTON VILLAGE HALL 200 CLUB - 2012 /2013

July 2012

1st Prize	083	T Whitcombe
2nd Prize	148	A Hiscock

August 2012

1st Prize	093	P Grant
2nd Prize	098	J Nandhra

September 2012

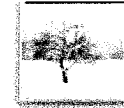
1st Prize	057	J Bunce
2nd Prize	006	A Walton

Congratulations to all the prize winners

Whilton Village Hall Management Committee



Roughmoor Spinney



The AGM was held on Saturday 13th October 2012 at 10.00 am in the Village Hall. Eight Committee Members attended and there were three apologies, All Officers and Committee Members agreed to continue for a further year. It was agreed that a small sub-committee be formed and on a regular basis access work to be done and if they think it necessary call for a Working Party.

We purchased three tons of MOT (granite chippings) and this was laid earlier in the year before the wet period. This has proved to be very effective and we hope to be in a position to obtain a further supply in early 2013. The extremely wet weather has rather restricted the maintenance work.

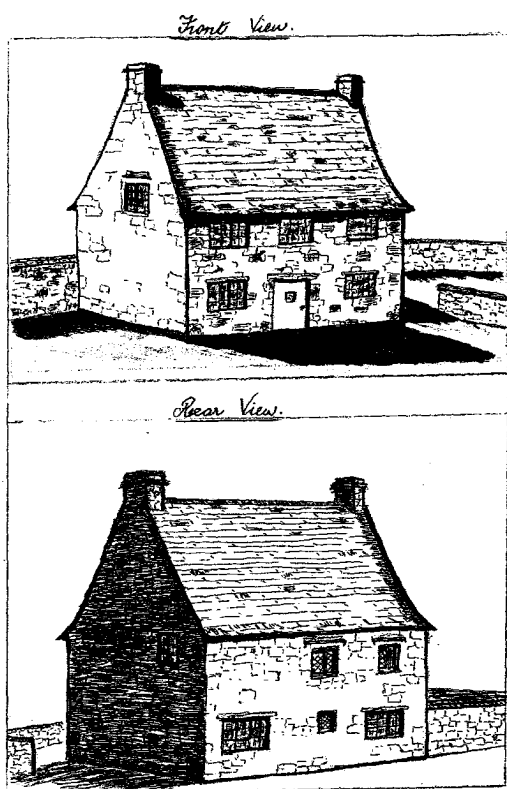
We do not have a source of income and fund-raising in the parish is rather limited but in the early stages of the development of this project, Whilton Parish Council looked upon it as being a very valuable asset to the parish and therefore assisted when necessary by helping financially. A request has been sent to Whilton Parish Council to consider helping to meet our running costs for 2013.

We have a considerable number of ash trees in the spinney and are keeping a close watch on any Ash Die back symptoms (fungal tree disease).

Whilton Spinney Project Management Group

Whilton Local History Society

The art of Whilton



On Thursday 29th November the society met to see some of the art work produced in or depicting Whilton. Among many others, we were able to see portraits, depictions of the church and other buildings and local views, dating from the 19th century to the present. Animals, birds and plants also featured, and reminders of hallowe'en parties in the last century.

The variety of skill, talent and interpretation made the evening interesting for all. We would especially like to thank those who hunted through their pictures and were willing to share their own or other people's art.

Sketches of the rear and front of the Manor House by an unknown member of Whilton WI in 1975. Note that the rear view is the view facing the road.

Sketch of Martins Farm, now called Church Farm, and the derelict old shop beside it in the late 1950s, by Brian Mutton, who married Susan Gardner of the Stone House.



The evening was an opportunity to enjoy the talent which Whilton has produced, and to celebrate the heritage of buildings and landscape in which we live.

The art included work by anonymous artists and the following:
John Ashwell, Rae Barnes, Janet Bowers, George Clarke, Joan Davies, Frances Drake, Clifford Ellison, Bennie Eyton-Jones, Edna Gardner, Rev C H Hartshorne, Barbara Lewis, Brian Mutton, Freda Thomas and Jean Wiltsher.

The next Local History Society meeting will be at 7.30 p.m. on Thursday, 24th January 2013. The subject will be: **"1656. One document's story."**

Rectory News



Dear Everyone

We are now realising that Christmas is fast approaching. Church too is making all the preparations for a truly festive time when more folk than usual gather together for services. We all enjoy hearing Christmas music sung – and probably enjoy even more singing carols ourselves. We love to see the Church decorated – the smell of all that greenery is do distinctive – and to see the church by candle light adds a special degree of beauty.

Light is a particular symbol of Jesus Christ coming into the world: John's Gospel contains no narrative of the birth of Jesus, no Mary realising she is pregnant or voices to Joseph telling him to accept Mary and her baby, no shepherds stunned by angels appearing in the sky, no wise men following a star – John's Christmas story is that Jesus came into the world as the true light that enlightens everyone. When there is darkness, how we appreciate light! This Christmas, as we sing out those old familiar carols, maybe clutching a candle, let us remember that Jesus is the light that shines in our darkness and thank God that Jesus Christ is there for us to be our light in life.

Happy Christmas!

Sue

Rector - The Revd Sue Kipling | The Rectory | Main Street | Great Brington | Northampton NN7 4JB

Telephone 01604 770402

Email: suekipling@btinternet.com

St. Andrew's Church – Fundraising and Social Events

Quiz Night

The penultimate Church fund raising event of the year was the well attended quiz night. As usual our Quizmaster Extraordinaire, Neil Phillips, posed a variety of themed questions plus a crossword to tease and torment our collective brains. Seven teams battled for the honour of being crowned Wits of Whilton and the accolade went to The Golden Guys who were: Brian, Jane, Robin, Dinah, James and Sarah.

During the half time interlude we enjoyed steaming hot fish and chips and, along with a raffle, the evening raised £252 for St. Andrew's funds. It was great fun and thanks go to everyone who supported it.

Events for 2013

The fundraising committee will shortly start planning events for 2013. We are always receptive to new ideas and would welcome fresh blood onto the committee.

If you have an idea or are willing to help plan and organise events then we would love to hear from you.

You can contact me by email Teresa@tlc-uk.co.uk or call me on 843988.

POLICE REPORT

PCSO Sarah Gray of Daventry Rural Safer Community Teams reports that in September and October there was one theft and two burglaries which were not from dwellings, one being from the sewage works in Whilton.

She now has a police Twitter account and can be followed at #DB7207.

We are reminded that the non-emergency number for Northamptonshire Police is 101 when it's less urgent than 999.



NEIGHBOURHOOD WATCH

The good news for Whilton is that we have a new Neighbourhood Watch Co-ordinator.

We welcome **David Stoddart**, who has taken on this role.
He may be contacted on 01327 842157.

GOOD NEWS FOR DOMESTIC OIL USERS

First year savings.

The Northants ACRE bulk oil buying scheme for oil users throughout Northamptonshire has now completed a very successful first year of operation. Individual members are enjoying average savings of around £80 per year. We'd be delighted if you'd like to join our growing membership as this will help to maximise our ability to negotiate the lowest possible prices for the benefit of all. Now would be a great time to join the syndicate and get the benefits for your heavy winter usage.

Dual Fuel opportunity.

We are currently investigating a new opportunity for further savings for those who use both oil and electricity. Our professional negotiators would be able to take the electricity needs of our oil members and negotiate bulk purchase of their electricity too. A dual fuel opportunity for those reliant on oil! However, before we take this further we would ask for your feedback as to whether it is something that would be of interest to you.

For more details on these opportunities, please contact Northants ACRE.

www.northantsacre.org.uk
01604 765888

We are a non-profit countywide organisation whose purpose is to support the needs of those in Northamptonshire's villages and rural areas.



TUESDAY CHAT

2.30pm in the Village Hall

This social event is still successful and the number attending is very encouraging. All are welcome and many interesting subjects come up during the course of general conversation. Tea and homemade cakes are available at no cost but we do ask for £1.50 per person towards the rent of the hall.

The dates for 2013 are 15th January & 19th February.

Whilton Social Group



WHILTON SOCIAL LUNCH



THURSDAY 13TH DECEMBER

12.30 in the VILLAGE HALL

DO COME ALONG AND JOIN US

£5 PER PERSON

PLEASE BOOK IN ADVANCE BY 9TH DECEMBER

BY CONTACTING ROS (842324) OR ANTHEA (843319)

WHILTON DIAMOND JUBILEE BOOK

This has proved very popular and has completely sold out.

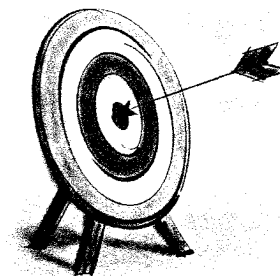
It may, however, be ordered online at an increased cost at

<http://www.blurb.com/user/store/NeilPhillips>.

NEWS FROM BRINGTON SCHOOL – November 2012

ARCHERY!

We are really excited about the prospect of having an archery club at school. We have been able to introduce this due to an extremely generous donation from the Brington and Whilton cricket club which has enabled us to buy the equipment needed. Mr Marriott has been attending archery lessons and is hoping to start the club later in the year.



CREATIVE CURRICULUM

The children are really enjoying this term's topics with class one learning all about food and farming through Yum Yum whilst the older children are becoming experts on space. We are busy planning our Fantastic Finishes and of course Christmas activities too!

MAD SCIENCE

We spent a fabulous day recently with the company Mad Science who came to school and entertained the children from both schools with science workshops and experiments. Great fun was had by all, the highlight being the launching of a rocket at lunchtime!

WINTER WARMER



Thank you to everyone who supported our recent Christmas Fayre. It was a lovely occasion and raised approximately £800 for the Friends of Brington School to be spent on the children.

CAROL CONCERT

We are holding a Carol service at Brington church on Monday 17th December at 2.00pm and it would be really lovely to see members of the community at that event.

STATEMENT FOLLOWING THE RECENT COURT CASE

As many of you will know Sara Meakins a former bursar of Brington Primary school was recently imprisoned for three years after pleading guilty to a range of offences including one of theft from the school. The school has issued the following statement.

"It has been a lengthy process from when I first joined our school and raised concerns about financial irregularities, through to the conclusion of the court case.

It was very distressing to realise that a trusted member of staff had acted in this way.

Fortunately we've been able to recover most of the missing money which has been used to help support staffing levels and improve our resources.

We're pleased that a conclusion has been reached and we can now move forward.

Office procedures have been changed and we're confident that the stringent management checks put in place which led to the discovery of the problem in the first instance will ensure that a similar event cannot happen in the future.

We're very grateful to the county council's audit team and the police for their expertise and assistance during this time and to the governors, parents and our local community for their ongoing support."

Primary school admissions

It's time for parents to apply for their child's primary school place

This year, Northamptonshire County Council is running a campaign targeting all parents with children who turn four years old between 1st September 2012 and 31st August 2013, to help raise awareness to parents of the right time to apply for their child's school place and how to do this.

Applications opened on Monday 10th September 2012 and will close on Tuesday 15th January 2013.

There are many myths surrounding applying for a child's primary school place which the county council aims to stamp out as part of this campaign. For the first time ever, they will be contacting parents directly to tell them it's time to apply for their child's primary school place which will reinforce the fact that they must do this regardless of whether:

- **They have put their child's name down at their preferred school**
- **The child lives in the area near the school**
- **They have an older brother or sister already at the preferred school**

Late applications are always a problem – this year in Northampton alone there were over 200 late applications which resulted in disappointment for many parents as they missed out on a place at their preferred school.

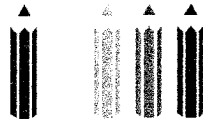
Parents are encouraged to apply for their child's school place online rather than by paper form and they can do this at www.northamptonshire.gov.uk/admissions

Roadshows

The school admissions team will be out on the road in libraries across the county hosting roadshows to help parents through the application process. Parents will be able to get help and advice at these events. Look out for dates on our website.

For further information:

- Contact Angela James on 01604 366913
- Visit www.northamptonshire.gov.uk/admissions
- E-mail admissions@northamptonshire.gov.uk
- Dedicated helpline 0300 126 1000



Brington and Whilton Pre-School

The Village Hall, Whilton

Children are now very settled within the pre-school, quite a few new children joined us in September and they are taking part in lots of exciting activities. Last term we looked at colours and have been playing, painting, sticking, collecting, sorting and visiting the spinney to plant snowdrops and collecting leaves for our display board.

We invite you to join with us for our Christmas Service at Whilton Church on Friday 14th December 2012 starting at 11.00am and then back at Whilton Village Hall for Coffee and Mince Pies. It would really be good to see you there.

If you have a child of 2 years and over, we welcome them along, we offer excellent education and care. We are led by very well qualified and caring staff who engage with the children and get to know the children very well in the small, but friendly environment.

Our sessions are:

Monday 9.30am – 1.00pm including lunch,
Wednesday 9.30am – 1.00pm including lunch
Friday 9.30am – 1.00pm including lunch

If you would like further information or would like to visit the pre-school please contact Jenny Holman 01604 770083.

HAPPY CHRISTMAS TO YOU ALL

COUNCIL LAUNCHES STAR APPEAL

Do you have star quality? That's the question Northamptonshire County Council is asking residents as it launches a campaign to recruit more foster carers. Foster carers are urgently needed for short term and permanent placements for children of all ages to add to the 215 council foster placements currently in Northants.

The circumstances of a child needing foster care are hugely varied. For some children, it's the start of a process that will ultimately see them living a new life with a new family; for others, it's a short term need. We want these children to be cared for as locally as possible so they can continue to go to their own school, mix with own friends and have as much stability as possible during a period of disruption.

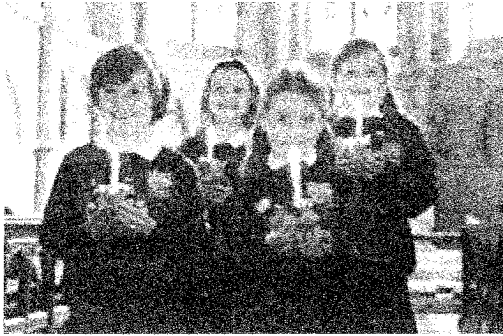
For more information call the fostering recruitment line on 0300 126 1009 or visit our website www.fosterme.co.uk

CELEBRATE CHRISTINGLE WITH US!

On Saturday 22nd December

at St. Andrew's Church, Whilton

at 4 p.m.



For over 40 years The Children's Society Christingle has been a key part of celebrations within churches and has raised essential funds to support the charity's work with vulnerable children and young people across the country.

Sasha's Column

Hello everyone

So much has happened since my last column. I am still trying to lose weight, have been training and have found new ways to keep me happy and entertained during this wet weather. It was only the other day that I went to the special V.E.T.S awards. I have no idea what that means but I am pretty sure everyone is hiding the fact that it's the vets. I am not that stupid. Anyway I haven't been walking a lot lately, because as you all know by now I really don't like rain, therefore this weigh in wasn't as successful as one may have originally thought.

The conclusion was that I needed to be entertained and stimulate my brain. So when we got home my mum filled up this toy that I have had for ages, but never used, with a half a carrot chopped up. It was my job to nudge it around and see if I could get the bits out. It is the best fun I have ever had. So now all my dinners and treats go into this toy for my enjoyment.

Around autumn I had a lot of fun in the back garden with a fun bone shaped hurdle. At first I was not too impressed. I was tempted over when Shell put on my lead and ushered me over with a treat. A couple of commands later and the lead was off, but the collar was still on and soon after that I was jumping over of my own free will. Well I say free, I would only do it for a treat...



All About Me!

This page is for you – the children of Whilton to tell us about you. You can include photos, drawings, games or anything else you want to share. We're looking for lots of ideas so please get in touch with anything you want to include.

Introducing.....

This issue Frank Walton has told us all about himself and we also have a seasonal quote from one of our younger parish members.....see if you can work out who said it!

Can you guess which young member of our village said this.....?

Whilst visiting a church at Christmas time, and looking at the Nativity display, we asked my son what the three wise men took for baby Jesus, with complete confidence he replied; "Gold, Frankenstein and Myrrh"!!!



Merry Christmas



Name: Frank Walton

Age: 6

Who lives in your house with you?
My Mum, my Dad, my big sister Delilah and my cat Molly.

What do you like best about living in Whilton?

That there is a shortcut to my house from the school bus stop through the graveyard and the fields!

Is there anything you don't like about living in Whilton?

There are not enough friends my age to play with.

What do you like most about Brington school?

I enjoy maths and playing outside in the playground.

What do you enjoy doing outside of school?

I play Hotshots (basketball) at school and football and I go to the swimming club at Daventry leisure centre.

Has there been a story on the news (in the last year or so) that you remember, and what do you remember about it?

That there was a hurricane in America and a lot of people lost their houses.

Fun Stuff

Nativity Word Search



S	A	G	S	M	A	J	E	N	T	V	S	R	F	B
E	C	B	H	F	F	E	O	G	A	M	J	A	S	A
D	M	T	E	J	A	S	E	I	J	U	O	G	V	F
S	A	C	P	M	H	U	M	N	T	W	S	T	A	R
B	R	F	H	G	D	S	T	A	B	L	E	B	K	A
E	Y	R	E	H	K	P	L	Y	J	N	P	E	S	N
S	G	D	R	S	B	E	T	H	L	E	H	E	M	K
W	D	V	D	B	J	I	R	M	C	U	M	S	R	I
I	L	O	S	M	L	S	N	H	N	P	R	O	Y	N
S	U	G	T	A	N	Y	F	N	G	O	L	D	A	C
E	H	S	O	N	K	J	E	I	D	E	Y	O	W	E
M	T	A	N	G	E	L	H	G	M	K	I	N	G	N
E	A	W	O	E	O	T	Y	A	U	R	L	K	E	S
N	R	I	T	R	P	K	E	R	L	I	N	E	T	E
S	A	S	N	A	N	A	T	I	V	I	T	Y	S	N

Nativity Word search...words to find

Angel	Star	Mary
Bethlehem	Donkey	Shepherds
Nativity	Joseph	Gold
Manger	Stable	Wise Men

Special Events...

Whilton Locks garden centre will be hosting some very special visitors on Sunday 2nd December; Father Christmas and his reindeer will be there from 11am to 3pm with lots of other exciting activities taking place on the day too.

The Heart of the Shires shopping village will have the cast of the Deco's Snow White pantomime switching on their Christmas lights this year. All the excitement takes place on Friday 7 December, with the shops open until 7pm.

Update from Rochelle

Just a short update from me. So I have finally started my shorthand course and its going really well. It's so strange at first, it's like learning the English language all over again. So now I have had about 10 lessons and I am fairly confident, but absolutely loving it.

My wild imagination takes over and I feel like some sort of James Bond, secret agent sort of person, with my own personal code.. So yes I think it's fair to say that it has taken over a large portion of my life.

Anyway that's it from me. Merry Christmas everyone and Happy New Year.



Christmas Gift Ideas

***Are your loved ones or friends blind or partially sighted?
Are you wondering what to buy them for Christmas?***

Then why not visit one of Northamptonshire Association for the Blind's Sight Centres to see a range of different gift ideas. They display and sell a variety of specialist aids and equipment that can make the perfect birthday or Christmas gifts for someone living with sight loss.

Gifts include: Kitchen Gadgets, Talking Clocks and Watches, Reading and Writing Guides, plus other Household Aids. There are Big Button Telephones and Mobile Phones, Large Print Books, Playing Cards and NEW Large Print 2013 Diaries and Calendars.



The gifts vary in price to meet all budgets and they won't be found on the High Street.

Locations:

Kettering Sight Centre located behind QD's on the High Street, at the top of the Wadcroft car park (off Commercial Rd).
Open Tuesdays, Thursday and Fridays 10am-1pm.

Northampton Sight Centre located within Wardington Court, Welford Road, Kingsthorpe. Open Monday – Friday 9am-3pm.

For added convenience, why not visit our **Mobile Sight Centre** when it visits your area. It will be in **Daventry Town Centre**, near Shopmobility (New Street) on **Wednesday 19th December** from 10am-1pm. It will also be visiting **Long Buckby** on the same date, parked at the GP Surgery on Station Road from 2pm-3pm

If you are unable to visit any of our locations but would like to either obtain a catalogue or place an order, call our Helpline **01604 719193**

nab
NORTHAMPTONSHIRE
ASSOCIATION FOR THE BLIND

The Whilton Newsletter is published quarterly and circulated free to every household within the parish boundary. The costs are met by the Parish Council.

The Editors are:

- Anthea Hiscock, Langton House, Main Street.
Telephone: 01327 843319
e-mail: anthea.hiscock@tiscali.co.uk
- Karen Whitcombe: Inglenook, Main Street
Telephone: 01327 843544
e-mail: karen.whitcombe@cummins.com
- Rochelle Lye, 1 Langton Rise
Telephone: 844181
e-mail: rochelle@btinternet.com

The Editors welcome material for the Newsletter. If possible, please supply a memory card with your contribution, or send it by e-mail. If you do not have a computer or typewriter, the editors will be happy to type handwritten articles for you.

The next issue will be the Spring Edition, covering March - May 2013. The last date for contributions will be 20th February 2012.

Whilton is also proud of its website – www.whilton-village.net. This contains details of the organizations in the parish, previous Parish Council Minutes and Newsletters, latest news and a very comprehensive Picture Gallery. If you have the facility, why not take a look at the content?

WHAT'S ON IN WHILTON: WINTER 2012-1013
Events take place in the Village Hall unless otherwise stated

	<u>2012</u>		
Sun	2 Dec	11 a.m. – 3 p.m.	Father Christmas and his reindeer at Whilton Locks Garden Centre
		4 p.m.	Advent Benefice Eucharist with Sunday School at Norton Church
Wed	5 Dec	7p.m.	Gardeners Association Christmas Supper
Sat	8 Dec	2- 4 p.m.	Christmas Bazaar (MIND)
Sun	9 Dec	9.15 a.m.	Worship for all at Norton Church
Wed	12 Dec	7 p.m.	Parish Council
Thurs	13 Dec	12.30 for 1 p.m.	Social Lunch
Fri	14 Dec	11 a.m.	Pre-school Christmas Service at Whilton Church
Sun	16 Dec	6 p.m.	Carol service at St Andrew's Church
Mon	17 Dec	2 p,m.	Brington School Carol Service at Brington Church
Sat	22 Dec	2.20 – 2.40 p.m.	Mobile Library at The Green
		4 p.m.	Christingle at St Andrew's Church
Sun	23 Dec	11 a.m.	Worship for all at St Andrew's Church
Tues	25 Dec	9.15 a.m.	Christmas Celebration Service at St Andrew's Church
	<u>2013</u>		
Wed	9 Jan	7 p.m.	Parish Council
Tues	15 Jan	2.30 – 4 p.m.	Tuesday Chat
Thurs	24 Jan	7.30 p.m.	Local History Society: 1656
Sat	26 Jan	2.20 – 2.40p.m.	Mobile Library at The Green
Wed	6 Feb	7.30 p.m.	Gardeners' Association: AGM and Quiz
Wed	13 Feb	7 p.m.	Parish Council
Tues	19 Feb	2.30 – 4 p.m.	Tuesday Chat
Sat	23 Feb	2.20 – 2.40 p.m.	Mobile Library at The Green