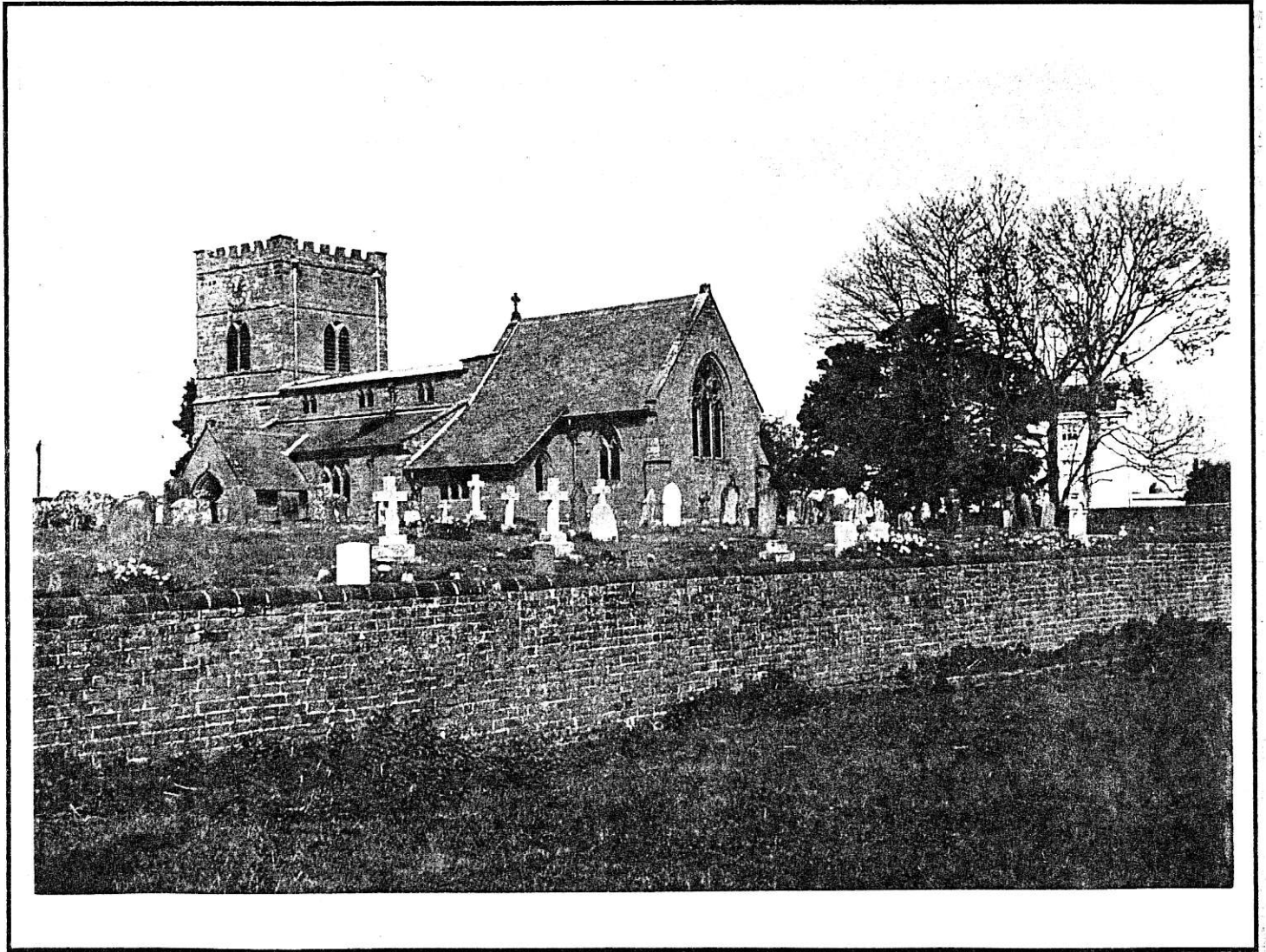


# Whilton Newsletter

February 1998





## WHILTON POCKET PARK



A site meeting took place on Saturday 17th January 1998 when 24 residents of the village attended. This number was very encouraging and augers well for the future of this project.

Sue Paice, Pocket Parks Officer for Northamptonshire, guided the group through the spinney making useful observations and highlighting areas for development as well as other areas that will be planted to preserve adjacent resident's privacy.

A Planning Meeting is to be held in the Village Hall on Monday 9th February 1998 at 7.30 pm to which all interested parties are invited. DO NOT FORGET this is YOUR Pocket Park and you are entitled to an input in the development of the project.

If you have any queries you wish to raise before the meeting please contact Derek Brown on 842968.



## **NEIGHBOURHOOD WATCH**

### Crime Report

December 31st - parked car at top of village broken into; personal items stolen

### Yearly Crime Review

During 1997 in Whilton there were no break-ins or damage to property, no theft of household goods and no cars reported stolen.

There was one act of vandalism to a parked car and theft of contents as stated above.

There were occasional reports of pedlars in the village, the report of aerial photographs being sold and three reports of travelling people offering tree-felling and garden maintenance or tarmacing services. Advice remains not to deal with these people and never to allow them into your home.

### **CONGRATULATION WHILTON ON THIS EXCELLENT REVIEW.**

Only one reported crime throughout 1997 reflects the high level of security and the continuing vigilance of the community. With continued determination it is hoped that 1998 will also be a year of very little crime in our village. It is certainly worth the effort.

Please notify Daventry Police immediately of anything suspicious. either seen or heard. in the village.

**DAVENTRY POLICE - 01327 300300**

Christine Billsborough

## WHILTON PARISH COUNCIL

### Report from Keith Hiscock, Clerk to the Parish Council

Apart from Councillors Mr and Mrs Amos, who had sent their apologies, there was a full Council Meeting on 5 January.

One member of the public attended.

#### **The roads**

There remains concern about the drains near the "Old Plough". "Clarence", the problem-solving service run by the Planning and Transportation Department of the County Council has apparently been unable to sort this out. As a result the Clerk is to put the Council's concerns in writing.

Staying with the roads, the Council discussed a small survey of traffic one morning in November, taken to establish the size of movement. During an hour and a half, 158 cars were observed at the top and bottom of the village. Of these 22 were passing through the village in either direction, the rest coming from the village, 88 going out at the top and 22 leaving at the bottom. In a small village with cars only able to proceed in single file for part of it, it is a matter of opinion as to how congested the village is.

It was agreed to carry out further surveys in March and June to establish a yard stick. Changes as a result of Althorp opening in July and August could then be established. The Council is to seek clarification of the effects of plans being produced to handle the traffic in this period.

#### **Appearance of the village**

The desire of the Council to continue to do well in the Best Kept Village competition was reflected in concern about repainting the telephone box, the state of the village verges and the need for allotment holders to be reminded about their commitment to their plots in the coming year. We are trying to seek assurance from BT that the repainting of the telephone box can be completed before the judging, and if not to gain permission for repainting by volunteer help, which has been offered for the village seats.

The need to stop verges being ruined by cars parking is being followed up, but we hope the community will help its visitors to be more careful in parking. The Clerk will be checking with allotment holders about their plans for the coming year.

#### **Development Areas**

The two main developments, the Conservation Area at the Locks and the Pocket Park at the end of the village continue to progress satisfactorily. Plans for the ponds have been approved at the Locks. There have been four suggested sites for a street light at the Locks. The Chairman declared an interest in this and after a special meeting of councillors, led by Derek Brown, the Deputy Chairman, at the Locks, it has been agreed that the light shall be on the Motorway side of the bridge, near the power cables and sub-station, where it will be of most use to residents.

There is to be a site meeting at the Pocket Park with Sue Paice the County Council Pocket Parks Officer on 17 January.

## **Finance**

Financially matters were satisfactory and the current reserves have allowed the precept submitted for the coming year to be £420 less than last year. Routine expenditures were approved and some income from a village Newsletter advertisement was gratefully received. It was also agreed to seek an estimate for replacing the notice board at the Locks, which is now too small to display parish notices appropriately.

There is always a large amount of information for circulation among the Councillors, some fifteen items on this occasion, ranging from requests for comments about Health Authority reductions to publicity for the CAB and new awards for rural cycling routes. Do feel welcome to come and hear more.

Our next meeting is on 2 March at 8 p.m. in the Village Hall.  
See you there?

\*\*\*\*\*

# **Marie Curie Cancer Care** are launching their 1998 **Golden Daffodil Appeal** with

## **THE DAFFODIL RUN.**

This is a Half Marathon and 10km Road Race, starting at

## **The West Lodge of Althorp Park**

on

**Sunday March 1 st.**

**This** concerns the residents of Whilton because the route passes through the village. The race starts at 10.30am and the first runners will reach Whilton at about 11.15am. They will take about 90 minutes to clear the village. The Gt Brington - Whilton road will be closed to traffic from 11.15am - 12.15pm to allow the bulk of the runners to pass along safely. After this time they will tend to be less bunched. I do hope that none of these arrangements cause too much inconvenience, and thank you, in anticipation, for your tolerance.

If anyone would like to support Marie Curie by acting as a marshal for the race in the locality of the village please contact

**Jane Mahood at Marie Curie Cancer Care**  
**on 01604 717070**

## WHILTON VILLAGE HALL

The Committee held its AGM on Monday 19<sup>th</sup> January 1998 and three matters came up which were felt should be drawn to your attention.

Firstly, Phil Waights, who has chaired the committee for many years, has stepped down and unfortunately has had to resign due to domestic commitments. Our heartfelt thanks go to him for all the work he has put in and the support he has given to each and every one of us on the committee. The Village Hall is now in a very good state of repair and decoration and much is owed to the drive and enthusiasm of Phil. We welcomed our new Chairman, Mr Mike Lewis.

Secondly, we have had to review our rates of hire. These were increased slightly in 1994 and, in order to keep up with inflation, a small increase is due this year.

New rates are:-

Adult Education	£4.00 per hour
Village Users	£3.75 per hour
Others (Outside Village)	£5.50 per hour
Playgroup	£4.00 per session (remaining the same, but to be reviewed in September 1998)

Until now we have set small charges for the loan of equipment (tables, chairs and crockery) but to make it simpler for all concerned, borrowers will be invited to make a small donation to the Village Hall.

Thirdly, we are planning the barn dance for this year; hopefully in early July. An Entertainment Sub-Committee has volunteered to organise this:-

Mrs Anthea Hiscock -	Telephone - 843319
Mrs Teresa Leadbetter	843988
Mrs Shirley Brown	842968

### ARE THERE ANY FUNCTIONS YOU WOULD LIKE TO SEE ORGANISED IN THIS VILLAGE?

There have been suggestions for a 60s evening, a regular village quiz and frequent beetle drives! The Entertainment Sub-Committee needs your input, not only just ideas but practical advice on how these events could be organised and even, dare I say, help in getting them up and running.

Mary Kane  
Secretary

**CONGRATULATIONS TO OUR NOVEMBER & DECEMBER 1997**  
**VILLAGE HALL 200 CLUB WINNERS**

**NOVEMBER 1997**

<b>1st Prize</b>	<b>No.030</b>	<b>K &amp; J Davies</b>	<b>£40</b>
<b>2nd Prize</b>	<b>No.190</b>	<b>C.B.Williams</b>	<b>£20</b>
<b>3rd Prize</b>	<b>No.075</b>	<b>A.Heeley</b>	<b>£10</b>

**DECEMBER 1997**

<b>1st Prize</b>	<b>No.093</b>	<b>C.Print</b>	<b>£40</b>
<b>2nd Prize</b>	<b>No.165</b>	<b>R.Houghton</b>	<b>£20</b>
<b>3rd Prize</b>	<b>No.101</b>	<b>D.Welch</b>	<b>£10</b>



**BRINGTON AND WHILTON PLAYGROUP**

**Many thanks to everyone who kindly supported our Coffee Morning; we raised over £60!**

Our Christmas Celebration Carol Service was a great success. The children thoroughly enjoyed themselves and really looked the part in their angel costumes complete with wings and halos. A special thank you to the Revd. David MacPherson for conducting a lovely Service and a big thank you also to Jean MacPherson who kindly played the organ.



Coffee and mince pies were available after the Service in the Village Hall and the raffle (in aid of Playgroup funds) raised £82. **Well done everyone and thank you for your support.**

**Good news** this Spring Term - the Playgroup has now been accepted as a registered provider for the new Nursery Education Grant. In layman's terms this means we will be able to take part in the Local Educational Authorities Early Years Development Plan and so offer a financially assisted place (possibly free dependent on Finding) to all four year olds. This is excellent news and it is hoped that this will encourage more parents to use our Playgroup.

We still have places available for each of the three morning sessions (Monday, Wednesday and Friday). Anyone interested is invited to come along to any session and/or contact me at the number below.

**Carol Henderson**  
**Supervisor**  
**01327 842849**

## THE WHILTON MILLENNIUM MAP PROJECT

The committee planning the design of the map has continued with its work through the winter, and as a result we have a much clearer idea of what we are hoping to achieve. We also already have a few volunteers to help in the production.

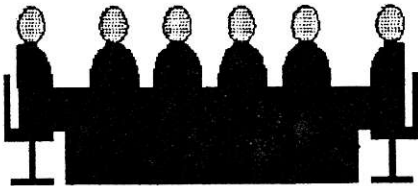
The map is being planned to hang on the Village Hall wall between the two big windows. The central part will be a patchwork depiction of the parish, showing the fields, roads, streams, canal, motorway and significant trees and landscape details. This will be a group project and will be stitched by the WI. It will include embroidered plans of the buildings in each settlement, and we already have a volunteer for this embroidery!

Around the settlements and in some other parts of the map there will be small pottery depictions of some of the buildings of the parish. These will be made for the map by our local potter, Peter Ilsley.

The central patchwork will be surrounded by about 80 squares depicting different aspects of the parish and produced, we hope, by as many different people as possible. There are many techniques using fabric and / or needlework, and we hope to create as much variety and interest as possible. Each square will be 15 cm square when finished and they will then be stitched together to form a background to the map.

The committee is producing a suggested design for each aspect to be illustrated, but we expect that some of the needleworkers will wish to alter or improve the design to make it their own.

Our next meeting is at 8 p.m. on Friday 27 February.



We expect that soon after that we shall be ready to appeal for volunteers to work on these squares, and of course, you will be very welcome to come to the meeting too.

Anthea Hiscock.  
843319.

\*\*\*\*\*

Quotation (sent in by Joan Davies)

There is a pleasure in the pathless woods,  
There is a rapture on the lonely shore,  
There is society, where none intrudes,  
By the deep Sea, and music in its roar :  
I love not Man the less, but Nature more.

from Childe Harold's Pilgrimage - (Lord Byron, 1788 - 1824)

\*\*\*\*\*

## GARDENERS' ASSOCIATION

The Annual General Meeting of the Association was held in December when, in addition to the meeting, the members enjoyed a pre-Christmas supper.

The Chairman reported that this had been a most enjoyable year with some very interesting speakers visiting the association. A very successful coffee morning was held in the summer, helped by the beautiful weather, boosting the income for the association. Thanks were also expressed to all those who had helped in the running of the association over the past year, in particular those holding key roles within the committee. She also welcomed all new members to the association.

The Treasurer reported that at present there are 35 members. Although costs are rising the association will end the year slightly better off than last year.

The programme for 1998 is now almost complete and includes a talk on birds, interesting plants to grow and a visit to a nursery at Crick.

The Chairman confirmed that Whilton had done very well in the Britain in Bloom competition, being awarded 71 points and missing out on a "commended" by only one point. Following the report it was felt the village should try to take on board some of the comments made by the judge, such as the idea of a competition for "the best hanging basket". The judge also put forward the suggestion of more seating and more strategically placed permanent planting within the village.

The election of committee members took place, resulting in the following:

Chairman	Mr. Ian Woods
Secretary	Mrs. Gill Noden
Treasurer	Mr. Derek Brown
Programme Secretary	Mr. Rupert Eggington
Purchasing Officer	Mrs. Teresa Leadbetter
Committee Member:	Mrs. Gwen White

On behalf of the association, Mrs. Leadbetter thanked Mrs. Bowers for her hard work as Chairman over the past three years.

The next meeting of the association is due to be held on Monday, 2nd February.

---

## FLOWER FESTIVAL - A DATE FOR YOUR DIARY!

It is planned to hold the **1998 Flower Festival on Sunday, June 28th**. Still some way ahead but it's amazing how the months slip by and we shall soon be busy in our gardens!



## WOMEN'S INSTITUTE - JANUARY

Eleven members attended the January meeting, together with two guests (a 3 year old and her friend Winnie the Pooh!).

After the business section members' thoughts turned to warmer climates.

The theme for the evening was 'Desert Island Discs'. Several members wore hats for the occasion as they shared their choice of a book or a piece of music and a luxury item that they would like to have with them on a desert island.

Snippets of music were heard, reflecting a variety of tastes from classical through to rock 'n roll. Several members chose books of poetry and the complete stories of Winnie the Pooh was also mentioned. Needless to say our guest Winnie the Pooh was delighted!

A wide selection of luxury items was discussed, including various skin moisturisers, a brightly coloured golfing umbrella, hot brush, strong knife, family photo album, wind-up wireless and a plant pot filled with flower bulbs for cultivation on the island.

The meeting proved an enjoyable distraction from the wintry weather outside.

### W I Meetings for 1998

Members are looking forward to a varied programme of speakers during 1998.

We meet on the second Wednesday of each month in the village hall. Our meetings start at 7.30pm with a short business section, which covers local issues and also enables us to be involved with topics on a national basis.

This is followed by the speaker for the evening. Topics this year include 'Personal colour analysis', 'Shiatsu' and a countryside topic. Many topics give members an opportunity for 'hands on' involvement should they wish.

Three meetings will be "open" to anyone who wishes to come, for a small charge of £1 per person (50p for anyone of school age). The open meetings are as follows:-

February 11                      Personal Safety Awareness

April 8                              The Mary Rose

September 9                      Cake Decorating

Details will appear on the village notice board shortly before the date of the meeting.

If you would like to join in the fun come along to any of our meetings, or telephone Anne on 01327 843576.

Alternatively just come to our open meetings where a warm welcome awaits.

Anne Kilgour  
Hon. Secretary

## Report from Whilton W.I. Christmas Meeting

There was a welcoming 'hot toddy' awaiting our arrival at the Village Hall for members' night. As in previous years 3 members had volunteered to cook and serve a meal to the rest of us!

The evening was set with a 'star' theme and all the members had been requested to bring a star. Some very interesting shapes arrived!! An initial competition with 'star' in the answer caused much reflection and discussion. Then, the moment we had all been waiting for 'dinner was served', the table decorations were very impressive, including star candles. The superb meal was beautifully presented and we finished up with 'star' biscuits! Another competition was arranged as we all sat around the table and some of us had second helpings.

After a generous helping of wine and coffee the raffle was drawn, a vote of thanks given for all the hard work and another year at Whilton W.I. had drawn to a close, with the reminder that it will be 50 years old in 1999 and already the planning has begun!

Chris Messinger  
December 1997

\*\*\*\*\*

## MILK TOPS, FOIL, ETC. and STAMPS

Since the last issue of the 'Newsletter' we have collected two sacks of foil, etc. and lots of stamps.

As we have a number of newcomers to the village I thought it would be as well to explain the reason for this collection. My apologies to all who have read this before!

Both foil and stamps are taken to Lyncrest School where the foil is collected for sale to buy "Guide Dogs for the Blind" and the stamps are sold for the "Save the Children Fund". Both worthy causes as I am sure you will agree!

There are some points to bear in mind, however!

Stamps should be cut or torn from the envelope leaving a small surround of paper.

Certain items are not acceptable as foil, e.g. crisp bags and biscuit packets. A fairly true test is to screw up the article and if it "stays put" it is all right.

One important point is that foil dishes, milk tops, etc. should be washed and dried and all foil wrappings free of crumbs and other food particles. In other words all must be CLEAN.

Many thanks to all contributors and I hope we shall have even more support in the future. All offerings may be left in the porch by the back door of the "Old Plough".

Trudy Haynes

\*\*\*\*\*



FRESH FLOWERS AND VEGETABLES WANTED  
AT LITTLE COST?  
UNUSED GARDENING SKILLS?  
HALF ALLOTMENT PLOT AVAILABLE!  
A HALF ALLOTMENT IN WHILTON  
HAS BECOME VACANT.  
RENT £6 PER ANNUM  
IF YOU ARE INTERESTED PLEASE CONTACT  
KEITH HISCOCK, CLERK TO THE PARISH COUNCIL, AS  
SOON AS POSSIBLE  
PHONE: 843319

English words ending in ough and pronunciations

Tommy Gough

When first the new boy came to school  
His name was not announced.  
The children knew how it was spelled,  
But not how 'twas pronounced.

'Tis easy to decide said one.  
Of course it rhymes with rough.  
It must be clear to everyone  
That the boy's name is Gough.

You may be right a second said,  
'Tis possible, although  
I rather think if he were asked  
He'd say his name was Gough.

Pooh-pooh a loud voice called in scorn,  
With nonsense let's be through,  
That I am right you must admit,  
We'll call the new boy Gough.

That's as you please replied a fourth,  
While swinging on a bough,  
And yet I see no reason why  
His name should not be Gough.

But now the boy himself appeared  
and said, with bashful cough,  
"Say fellows, can I play with you,  
My name is Tommy Gough."

(sent in by Joan Davies)

## IN BRIEF.....

A report on the marking of the Village of the Year and Churchyard Competition 1997 has been received and our mark for the Village Section was - 92 and for the Churchyard Section - 98. These were our marks achieved out of 100 for each section.



"THE STORY OF WHILTON" Following the Village Appraisal this book was published and all spare copies were very quickly sold. Susan Brenton née Thorne, a former resident of the village, has very kindly made available three of the four copies that she had purchased. These are all in pristine condition and are available at £5 each.

Anyone new to the village might like to purchase this very popular and well-produced book - contact person -Derek Brown (842968). The money raised will be added to the small balance in the Appraisal Fund which will ultimately be spent on something of a material nature for Whilton Pocket Park.



CONGRATULATIONS to Cathy and Philip Battison of Tudor House on the birth of their daughter *Gemma Dawn* on 10th January 1998, a sister for Matthew and Harry



<p>WANTED - CLEANER FOR THE VILLAGE HALL - £3.50 PER HOUR APPROXIMATELY ONE HOUR PER WEEK IF INTERESTED PLEASE PHONE MARY KANE ON 842618</p>
--



WHILTON CAROL SINGERS were out in force on 22nd December in atrocious weather but their spirits were not dampened. The refreshment stops were very welcomed and £120 was raised. This money is being sent to assist with the funding for a nurse for the Parkinsons Disease Association.

## Summary of Events

- Sun 1 Feb 10.00am United Benefice Sung Eucharist - **Harlestone**
- Mon 2 Feb 7.30pm Gardeners' Association Meeting - Village Hall
- Mon 9 Feb 7.30pm Pocket Park Planning Meeting - Village Hall
- Wed 11 Feb 7.30pm Women's Institute - Village Hall - "Personal Safety Awareness"  
**(Open Meeting)**
- Fri 27 Feb 8.00pm Millennium Map Project Meeting - Village Hall
- Sun 1 Mar 10.00am United Benefice Sung Eucharist - **Whilton**
- Sun 1 Mar 10.30am The Daffodil Run (Marie Curie Cancer Care)
- Mon 2 Mar 8.00pm Parish Council Meeting - Village Hall
- Wed 11 Mar 7.30pm Women's Institute - Village Hall - "Colour Analysis"
- Fri 20 Mar Newsletter Deadline**

\*\*\*\*\*

The Whilton newsletter is published bi-monthly and circulated free to every household within the Parish boundary. The costs are met by the Parish Council. The Editors are:

Mr. Harold Haynes - The Old Plough, Main Street  
Mrs. Trudy Haynes - The Old Plough, Main Street  
Mrs. Shirley Brown - Cherry Orton, Main Street  
Mrs. Anne Heeley - Springbank, Brington Lane

Contributions to the newsletter to any of the above by **the deadline date, please**