



# WHILTON NEWSLETTER

FEBRUARY 2004



NEWS FROM ALL AROUND THE PARISH

***In this issue:***

**Reports from Organisations**

**Details of future events**

**Sponsor a tree**

**Your local shop.**

# WHILTON GARDENERS' ASSOCIATION



The December AGM was well attended as always and a most enjoyable social evening was had by all. A new committee was duly elected and sincere thanks go to the retiring committee members for their hard work and endeavours in assuring the continuing traditions and success of the association.

We now look forward to a varied and interesting programme for the year ahead. Our next meeting on **Monday 2<sup>nd</sup> February** should ensure a flying start to the gardening year with a talk on '**Climbers and Wall Shrubs**' by **Mrs Cropley**, always an enthusiastic and entertaining speaker.

**The rest of the programme is as follows:**

**5<sup>th</sup> April: Garden Design presented by Stuart Philips**

**7<sup>th</sup> June: Hemerocallis presented by Gerald Sinclair**

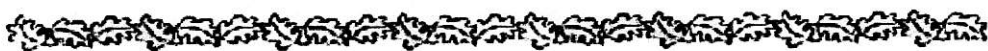
**2<sup>nd</sup> August: Social event (to include local garden visits)**

**4<sup>th</sup> October: 100 Years of Gardening presented by Nicholas Warliker**

**6<sup>th</sup> December: The AGM**

**Additional social events and garden visits will be advertised in the next edition of the newsletter.**

**Visitors and new members are always welcome, so why not come along on February 2<sup>nd</sup>, every gardener needs a little inspiration now and then.**



## PARISH MATTERS !!

A happy new year to all my readers. The Parish Council met on 5<sup>th</sup> January in the presence of 4 members of the public and our County and District Councillors for a clearing the last year's deck session.

### **No New Street Names**

The Matters arising from the previous meetings included the response to the questionnaire on the erection of Street names for Brington Lane, Main Street and the Green. As clerk I was able to report an unanimous verdict of eleven responses for taking no action. The complication of having to change postcodes lost the attraction of the proposal.

### **Positive Highways News**

There were a number of more positive outcomes from other initiatives. Highways had been very active on our list of concerns in relation to conditions noticed in the Councillors walk through the Locks. They had responded to all of them including producing a design for a warning road sign for the dangerous exit from the former Spotted Cow lane beside the motorway for traffic coming down the hill from Northampton, road repairs and clearance of undergrowth blocking views, and had sent on our concerns about the condition of the A5 junction. This was as well as notifying us of the closure of the Norton Road to redo the very badly repaired rumpel bend section regarded as dangerous by a number of our parishioners. As part of Highway matters the Parish Council was also very pleased to accept the generous offer of Phil Waights to fill the long sought vacancy for our Street Maintenance Warden. He was also willing to join a group to undertake the traffic Survey. We still need three more volunteers! Your Village needs you!

### **Planning Stalemate**

A number of matters remain to be resolved. The South East Strategy consultation and the Daventry response was again painstakingly explained to us by Cllr. Amos. This has a major affect upon us, Daventry, and the outcome of proposals for Danetree Village, and our village confines. The proposal had already led to the notice from NCC of the abandonment of the NCC Structure Plan as new higher tier proposals took over in terms of a Development Authority. Meanwhile we have to get on with more local changes.

### **Forward on the Green**

In relation to the Green proposals, we await the part emptying of the Salt Box through the winter before moving it to its new position. and a costed report from our Tree warden about the situation of the trees around the highway verges apparently planted by a previous Parish Council. However, having received an encouraging report from Beryl Williams about the response of 18 parishioners to her questionnaire on the public use of the Green, the Council confirmed its intention to seek registration. The clerk was asked to discuss the content of the responses with the County Council specialist to see if the indication of children's recreation, adult sitting/maintenance and stalls for village events properly witnessed would be sufficient. Finally an older resident off the Green had requested the Council to consider a new village light at the far end of the Green next to the entry to the Rectory Drives to light up this dark area. The Clerk was asked to send out a questionnaire to those residents affected and await their response.

### **Parish Planning News**

Planning issues again took up a good part of the meeting. Confirmation had been received that both the cutting and pruning of trees at the Locks-A5 road had been approved and also the resubmitted plans for a bungalow in the garden of The Old Cottage. The meeting had to consider two new minor applications for the Locks Garden Centre- an erection of a polytunnel and an illuminated sign well back from the road at the actual entrance to the main site. These seemed appropriate and of little consequence but what the sign was to display seemed to them of much more significance. The original application agreed and supported, with some concerns about traffic flow, had been for a Garden Centre. The sign was clearly to announce to the world that it was a Garden Village with a number of concessionaires. While in terms of the extra services and as a complement to the Heart of the Shires this may be an aspect to be welcomed, the Parish Council considered this could add to their concerns expressed earlier about restricted parking spaces, the constricted access for lorries delivering to the site and to the overall traffic flow problems at peak times between the one lane rail bridge and humped canal bridge. This could be serious when Carpet Centre, The Mill events, Caravans and Marina combine with peak weekend Garden Village traffic. The clerk was asked to remind the DDC of this concern.

### **Parish Council Assessment of Risks**

Risks of another kind were examined using a list of duties supplied by NALC to assess risks within the functions for which the Parish Council had direct responsibility. The new trees notified at the last meeting were one, the 3 seats and village lighting others. The results of these assessments were now part of the annual Audit and were recorded for this.

### **Electors List, Whilton in need Charities and Care and Repair**

The Clerk brought to the attention of the meeting that he now had a copy of the up to date full Electors List and the existence of the Care and Repair Organisation in Daventry which is illustrated in this Newsletter. This organisation could be used by homeowners unable to manage organising house repairs. If individuals had inadequate means to pay for vital repairs these might be paid for by application to the Whilton Parochial in Need Charity that was still looking for eligible recipients. All ages could benefit from grants from the Charity provided their circumstances were difficult.

### **January and ongoing Traffic Restrictions**

Finally having got approval for the £560 plus expenditure needed, the Clerk reminded the Council of the two traffic restrictions starting in January, a 40mph limit and one lane across the motorway bridge, and the diversion to get to Daventry avoiding Norton while the bend was repaired.

Hopefully these may both be completed by the next meeting on March 1<sup>st</sup>. See you there?

**LIBRARY SERVICE: - THE COUNTY LIBRARY VAN CALLS IN THE VILLAGE EVERY OTHER TUESDAY AT APPROXIMATELY 9.10 AM TO 9.30 AM. THE FEBRUARY DATES ARE 10<sup>TH</sup> & 24<sup>TH</sup> AND THE MARCH DATES ARE 9<sup>TH</sup> & 23<sup>RD</sup>**



# CHURCH MATTERS



## **SERVICES FOR ST ANDREW'S CHURCH WHILTON**

### **FEBRUARY 2004**

<b>1<sup>ST</sup></b>	<b>10.00 AM</b>	<b><u>BENEFICE SUNG EUCHARIST AT WHILTON</u></b>
<b>8<sup>TH</sup></b>	<b>11.00 AM</b>	<b>FAMILY SERVICE</b>
	<b>6.00 PM</b>	<b>HEALING SERVICE</b>
<b>15<sup>TH</sup></b>	<b>11.00 AM</b>	<b>SUNG EUCHARIST</b>
<b>22<sup>ND</sup></b>	<b>11.00 AM</b>	<b>FAMILY EUCHARIST</b>
<b>29<sup>TH</sup></b>	<b>11.00 AM</b>	<b>SUNG EUCHARIST</b>

### **MARCH 2004**

<b>7<sup>TH</sup></b>	<b>10.00 AM</b>	<b><u>BENEFICE SUNG EUCHARIST AT HARLESTONE</u></b>
<b>14<sup>TH</sup></b>	<b>11.00 AM</b>	<b>FAMILY EUCHARIST</b>
<b>21<sup>ST</sup></b>	<b>11.00 AM</b>	<b>MOTHERING SUNDAY FAMILY SERVICE</b>
<b>28<sup>TH</sup></b>	<b>11.00 AM</b>	<b>FAMILY SERVICE</b>



# **FLOODLIGHTS**



**THIS FACILITY IS AVAILABLE FOR ALL CELEBRATIONS OR TO REMEMBER A LOVED ONE OR IF YOU WOULD JUST LIKE TO SEE THE CHURCH FLOODLIT.**

**AT A SMALL COST THE CHURCH CAN BE FLOODLIT FOR THE EVENING MAKING ANY OCCASION VERY SPECIAL FOR YOU**

Janet Bowers





During the late autumn and winter a small party of dedicated workers carried out the task of clearing the pond of weed and rushes but there still remains a dredging project to be carried out to clear silt that accumulates.

We hope to take delivery early February of approximately 52 very young trees and we are looking for helpers to assist with the planting. These will be very much smaller than those already planted and to give them a good start, we are purchasing mulch mats and spiral tree guards and canes. The cost to sponsor a tree will still be £5 and we hope there will be a good demand and so help to make the Whilton Parish Project successful.

**PLEASE WATCH THE NOTICEBOARDS FOR THE DATE WHEN PLANTING  
WILL TAKE PLACE**

As we frequently point out, the spinney was gifted to the parish of Whilton and every resident therein has a part-ownership. It is open for everyone to come along and assist in a constructive way in the development of the spinney.

In our February 2003 issue a reminder was given of the Countryside Code. Unfortunately this is not being totally observed. On a recent visit to the spinney the gate leading on to the bridge appeared to have been deliberately propped open (approximately 12 inches) with a piece of wood. As most people will be aware, Mr Gordon Emery has livestock in the field where the footpath crosses and a number of his animals could quite easily have got into the spinney and harmed not only the plants and trees but themselves.

Litter has also been found - empty cans and bottles (drink) and plastic bags and other paper. We are not suggesting that it is residents of the parish involved but feel that no harm can be done by once again setting out the Countryside Code.

- **Do not forget to close gates behind you and take your litter home.**
- **Guard against all fire risk.**
- **Keep dog; under proper control.**
- **Keep to the paths; across farmland.**
- **Avoid damaging fences and walls.**
- **Safe guard water supplies.**
- **Protect wildlife plants and trees.**
- **Respect the life of the countryside.**

**SPONSOR A TREE IN THE SPINNEY**

Of the 52 trees mentioned above, we have list of 18 sponsors who missed out on the first planting. We will be approaching those on the list for their £5 per tree but obviously we would like to receive sponsorship for the remaining 34 trees.

If you would like to sponsor a tree please contact either Shirley & Derek Brown (842968) or Anthea Hiscock (843319).

Management Committee



**Our Rector - Rev Chris Goble works from Brington Rectory and can be contacted on 01604 774042 or E-mail [chris@rectory.freeserve.co.uk](mailto:chris@rectory.freeserve.co.uk)**

**ST ANDREW'S CHRISTMAS MARKET**

As reported in the December Newsletter, the Christmas Market was very enjoyable and the sum raised was £603 - £500 for the water/drainage project and £103 to the General Fund. Again, thanks to all who helped to make it so successful.

**CHRISTINGLE SERVICE**

This service was again magical with the oranges and candles and of course the sweets which the children (and some adults) enjoy. Monies from this service go to support the Children's Society in their work for children in need - this year focusing on children suffering from bullying.

**ST ANDREWS LOOK FORWARD TO 2004 AND TO NEW IDEAS FOR BOTH CHURCH SERVICES AND FUND RAISING / SOCIAL EVENTS,**

**CAROL SERVICE**

The Carol Service had a slightly different format this year by having some non-biblical readings and a few modern carols. This service is always special with a nearly full church and the feeling that Christmas has started.

A new idea for 2003 was socialising afterwards with mulled wine and mince pies which proved to be successful and enjoyable.

Janet Bowers

**Round the Bend**



Well hopefully that has grabbed your attention! Yes I know it's been a while but it is still going and as the heading suggests is now completely round the bend. The bend in question being the sharp left hander by the grass triangle at the end of Manor Lane and the 'it' being the 'Copper Mile' of course.

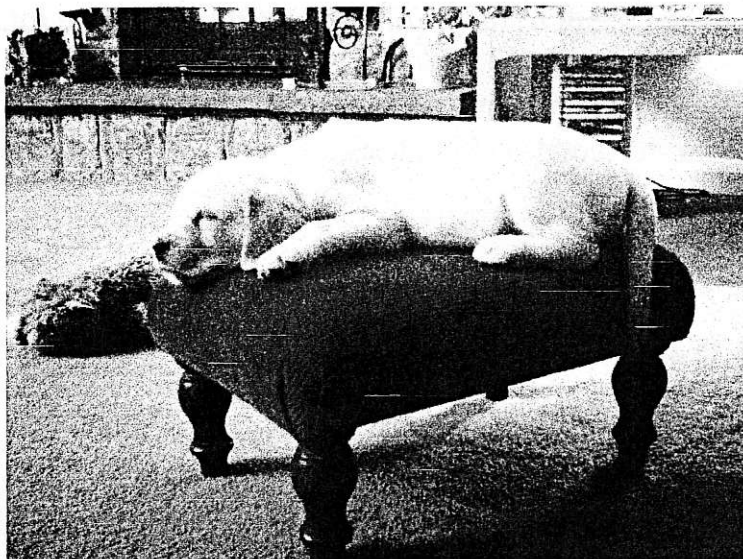
Despite the recent lack of news coverage in the local press (aka Whilton Newsletter), the Copper Mile has been quietly rolling along through the village and is at present resting outside Kunda Cottage having safely negotiated the sharp left hander.

Donations to assist the mile's progress can be left in St Andrew's church or handed in to Janet Bowers or Gill Denbigh at any time. Many thanks as always to everyone who has already donated and please keep saving those coppers, every little helps. We are heading towards a distance of 1000yds and approaching the total of £600 raised. We are well on the way so let's keep it going.

# Guide Dogs for the Blind – Puppy Walkers Update

I would like to tell you about our latest Guide Dog Puppy 'Questa', who joined the family 2 weeks ago on the 9<sup>th</sup> January. Questa is a little bundle of fluff aged 6 weeks, she is a Golden Retriever/Labrador cross, pale honey in colour.

As many of you may know by now, Penny who is now our own dog who didn't make the grade as a Guide Dog, was the first to meet Questa and was a bit shocked at first and then very excited, Questa was fine and took it all in her stride.



After her first meal they began to get to know each other and now two weeks later they are really great friends, often sleeping together on their mat, playing in the Garden and having tugs of war, usually in front of the television when the football is on!. Penny is learning to be patient and not too boisterous when playing with Questa.

Questa is a real character and seems to have settled in very well as you can tell from the picture. I am looking forward to taking her for walks in the village and hopefully teaching her some of the basic skills needed before she leaves us to take up her Guide Dog Advanced training in 9 months time.

These will involve bus, train and taxi rides, shopping visits to the local shops and Milton Keynes, walking slowly up and down steps, so if you see us in the village going up and down the steps in

Southview you now know what we are doing.

We have just returned from the first car ride to the shops, she was carried around the Pet Shop and Tesco's which was very busy, she was very quiet and interested in what was going on around her as you can imagine she was the main focus of the many children in the store.

Jean Davies  
3 Langton Rise

## **WHILTON APPRAISAL**

*Just over nine years ago an appraisal of Whilton was produced by various people in the parish. The aim was to cover Whilton past, Whilton present and give a few ideas for Whilton future. Although a number of things have changed, (we now have an environmental and conservation area – Roughmoor Spinney), the basic facts are still very interesting. Since this book was printed there have been several new residents in the parish and if anyone would like to borrow the master copy to read, please contact Derek or Shirley Brown on 842968.*





# **NEIGHBOURHOOD WATCH.**



There has been a spate of burglaries in the surrounding villages over the last month but fortunately not here. Long Buckby has been especially hit.

The good news is that four youths were arrested at Long Buckby Station "equipped to steal" but this does not seem to have solved the problem there totally.

A well known offender specialising in "walk in" burglaries is back in the area. He is bald with a star tattooed on his cheek. If you see him please report it immediately.

**P.R.Waights.**  
**Neighbourhood Watch Co-ordinator.**

## **WHILTON VILLAGE HALL 200 CLUB**

Our volunteers are now going round the village collecting for the 2004 renewal of the 200 Club. Over the past ten years ticket numbers have gone down from 208 to 120, last year being the all time low. This is a worthwhile cause for funding the work to improve the facilities in the village hall and at the same time there is also the possibility of winning a prize.

The prizes for last year were: 1<sup>st</sup> - £40, 2<sup>nd</sup> - £20, and 3<sup>rd</sup> - £10 and for this year they could be the same depending on the take-up of the membership,

- Would you like to become a member?
- If you are already a member, would you like a further ticket?
- Annual cost £13 per ticket
- Contact the co-ordinators Shirley & Derek Brown on 842968

WHILTON VILLAGE HALL 200 CLUB

DECEMBER 2003

1 <sup>st</sup> Prize	011	J Patching	£40
2 <sup>nd</sup> Prize	093	C Print	£20
3 <sup>rd</sup> Prize	145	T Treacy	£10

CONGRATULATIONS TO ALL THE WINNERS



FOR SALE

STAG MINSTREL (DARK WOOD)  
DINING TABLE  
VERY GOOD CONDITION  
CIRCULAR – EXTENDS TO OVAL  
SEATS 6

TEL 01327 844555



**DAFFODIL RUN 2004**



**HOW MANY WHILTON RESIDENTS ARE PREPARING FOR THIS YEARS RUN?**

**WE DON'T HAVE LONG, AS THIS YEAR'S EVENT TAKES PLACE ON 29<sup>TH</sup> FEBRUARY, AT CASTLE ASHBY. IT'S TIME TO DRAG OUT THE TRAINERS AND SHORTS AND GET UP EARLY TO WORK OFF ALL THE CHRISTMAS EXCESS!!**

**THE EVENT HOPES TO RAISE LOTS OF MONEY FOR MARIE CURIE CANCER CARE, SO IF YOU'RE NOT TAKING PART THIS YEAR, WHY NOT SPONSOR SOMEONE THAT IS. THE DISTANCE IS 10K OR HALF A MARATHON (I KNOW WHICH ONE I'M DOING!)**

**GOOD LUCK EVERYONE**

Jo Grant  
Manor Lane  
Tel: 844731

## Whilton Canal Shop

- Do you know where your nearest Convenience Store is?
- The Canal Shop is alongside the canal, behind Whilton Locks Carpet Company, about a mile from Whilton.
- We are open **9-5 Monday to Saturday and 10-4 on Sundays** during the winter, staying open an hour later in the summer.
- The shop is well stocked with useful things from eggs, milk and bread through to bacon, sausages, butter and cheese.
  - We have a range of frozen food as well as canned and bottled food and drink.
  - We stock the Chronicle and Echo and Daventry Express and a selection of morning papers.
    - We also have a good selection of wines, beer and cider.
  - We do phone top-ups and cash back on debit card purchases (over £5).
- We sell greetings cards, stamps, books, shoes, hats, gloves and waterproofs as well as a wide range of nuts, bolts, oil, fanbelts, paint, brushes, tools and so on.
  - We are agents for dry cleaning, laundry, shoe repairs and film developing.

**Why not call in and find out how we can save you driving into Daventry or Northampton?  
If there is anything you would like us to provide, please tell us and if we can we will offer it.**



**Richard and Lesley Sallet, The Canal Shop, Whilton Locks. (01327) 844442**

## WHILTON WOMEN'S INSTITUTE

**The meeting held on Wednesday 10<sup>th</sup> December was our Annual Members' Night when we all took a plate of food (pre-arranged) to be shared and as usual the food was varied and delicious. We started the evening with a 'recognition quiz'. Pictures of members under the age of three were placed all round the room and we had to guess who they were. It was quite difficult but some were more observant than others. Our Business Meeting was dealt with very quickly and efficiently which left us time to enjoy our food and play other guessing games.**

**The Craft meeting that should have been held on Wednesday 14<sup>th</sup> January 2004 with Judith Fuller (one of our own members) demonstrating 'Iris Folding' was cancelled due to bad weather and treacherous conditions underfoot.**

**Shirley Brown**

## For more information:-

Our telephone number is:

**01327 302322**

Please telephone us and we will be happy to arrange a visit to your home to discuss your needs with you.

**OR**

You are also welcome to visit us at our office based in:-

Housing Services  
Daventry District Council  
Lodge Road  
Daventry  
Northants  
NN11 5AF

Fax: 01327 302247

Email: [careandrepair@daventrydc.gov.uk](mailto:careandrepair@daventrydc.gov.uk)

## Background to

## Care & REPAIR

Care and **REPAIR** England was set up by Shelter and the Housing Association Charitable Trust in 1986.

Since that time, the number of home improvement agencies throughout the country has grown from a handful to over 200, and 100,000 older and disabled people have been helped.

The aim of Care and **REPAIR** is to provide a comprehensive advice service to elderly and disabled owner occupiers who need help in repairing or adapting their homes.

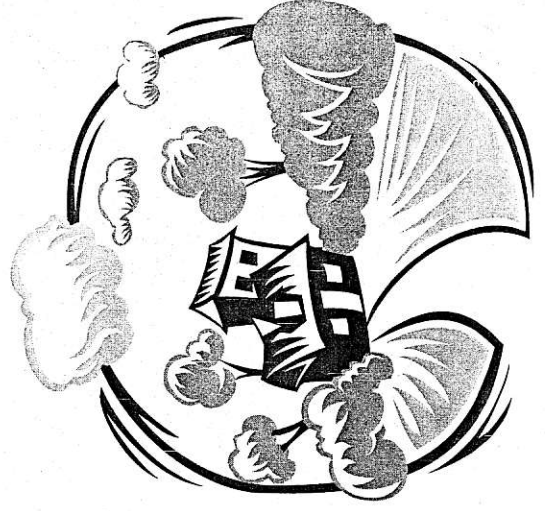
Some schemes are run by Housing Associations or Housing Trusts. The scheme for Daventry District is run by the Council's Housing Needs team and is based in Housing Services, Daventry District Council, Lodge Road, Daventry, Northants. NN11 5AF

# Daventry

## Care &

## REPAIR

A service for elderly and disabled homeowners who need help with repairs to their homes



OFFICE OF  
THE DEPUTY  
PRIME  
MINISTER

## Care & REPAIR in Daventry District

### What is care & REPAIR?

Care and **REPAIR** offers practical advice and guidance to elderly or disabled homeowners and private tenants who need help in organising repairs or improvements to their homes.

The Care and **REPAIR** service enables people to continue living in comfort and security in their own homes.

### Mila Hardware Handyman Service

With the very kind support of local company, **Mila Hardware Ltd.**, we are also able to offer our clients the service of a handyman one day per week to carry out any repairs that might be required to doors and windows.

### What can Care & REPAIR do for me?

- Visit your home in confidence and discuss your needs
- Give you advice on any repairs, improvements, or adaptations you may need
- Help you to find a reliable tradesman to do the work
- Give you advice on welfare benefits and any grants which may be available
- Give you advice on ways to fund the work

### How much will it cost me?

Our advice is FREE, but if building work is organised a small fee will be charged (7% of the total cost of work).

### What will I be paying for?

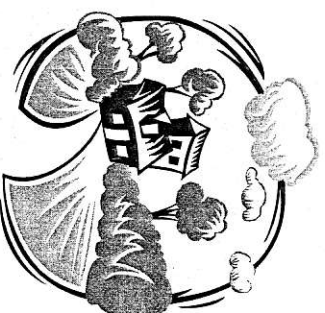
We will produce any drawings and specifications needed.

### Then, while the work is being done, we will...

Help you through each stage, and monitor the work until it has finished.

### Afterwards:-

If there should be any other problems, we will be on hand to sort things out.



## SUMMARY OF EVENTS

Sun	1 <sup>st</sup>	Feb	10.00 am	Benefice Sung Eucharist in St Andrew's Church, Whilton
Mon	2 <sup>nd</sup>	Feb	7.30 pm	Whilton Gardeners' Association -Climbers & Wall Shrubs by Mrs Cropley
Tues	10 <sup>th</sup>	Feb	9.10 am	Library Van in village
Wed	11 <sup>th</sup>	Feb	7.30 pm	WI Meeting in village hall – Northampton Town & County (Henry Cooper photographs) by Gary Schaeffer
Tues	24 <sup>th</sup>	Feb	9.10 am	Library Van in village
Tues	30 <sup>th</sup>	Dec	9.10 am	Library Van in village
Mon	1 <sup>st</sup>	Mar	8.00 pm	Parish Council Meeting in village hall
Tues	9 <sup>th</sup>	Mar	9.10 am	Library Van in village
Wed	10 <sup>th</sup>	Mar	7.30 pm	WI meeting in village hall – Encaustic Art (Beeswax) By Mrs Walpole
Sun	21 <sup>st</sup>	Mar	11.00 am	Mothering Sunday Family Service in St Andrew's Church
Tues	23 <sup>rd</sup>	Mar	9.10 am	Library Van in village

<b>Weds</b>	<b>24<sup>th</sup></b>	<b>Mar</b>	<b><u>Newsletter Deadline</u> – Please hand in your contributions by this Date at the very latest, preferably well before or otherwise we cannot guarantee they will be included in the next edition</b>
-------------	------------------------	------------	--

The Whilton Newsletter is published bi-monthly and  
circulated free to every household within the Parish boundary.  
The costs are met by the Parish Council. The Editors are:

**Derek & Shirley Brown - Cherry Orton, Main Street. - 01327 842968**  
***E-mail – shirdek@btopenworld.com***

**Sara Meadows - Courtyard Barns, Manor Lane – 01327 844211**  
***E-mail – saraspicer@lineone.net***

We are always pleased to receive additional contributions from people who do not normally have an input, especially children. Please supply a disk with your contribution if possible so that we can manipulate the text to fit if necessary. If you do not have a PC or typewriter the editors will type the articles as we have always done in the past.

Articles of local interest, poems, recipés, puzzles or drawings will always be considered for inclusion in the Newsletter.

**Any contributions to the newsletter  
by the deadline date please, to any of the Editors.**