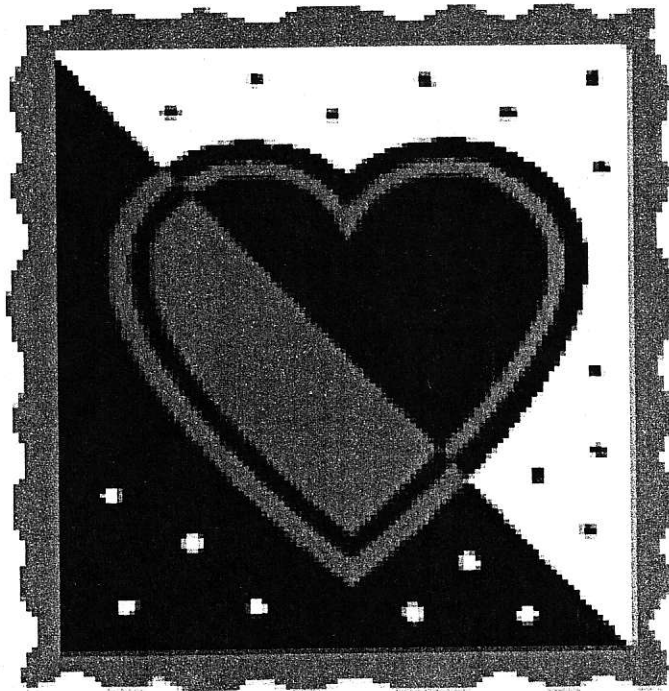




WHILTON NEWSLETTER

FEBRUARY 2005



In this issue

- ◆ Parish News
- ◆ Church News
- ◆ Neighbourhood Watch
- ◆ Reports of past & details of future events
- ◆ Comic strip
- ◆ More 1917 tips and information
- ◆ New Village Hall ?
- ◆ Snow in Whilton 1982
- ◆ Feathered Visitor to Whilton



NEWS FROM ALL AROUND THE PARISH

BETTY PRIDE – 1910 – 2004

On December 26th 2004 Betty Pride died at the age of 94 years. The Revd. Helen Rayment conducted a wonderful farewell service at St Andrew's Church on 13th January 2005. Over 40 people attended which shows the respect with which Miss Pride was held.

Betty lived at Roughmoor Farm and worked in the fields and with the horses. On leaving the farm she and her sister Freda came to live in the village, finally buying Dormer Cottage where they lived until approximately ten years ago when Betty and Freda moved into the Wheatsheaf Residential and Nursing Home, Daventry

Betty became church organist and in charge of the choir and all choir members will remember their enjoyable practices. In 1992 Betty retired as organist after 57 years of loyal service and was presented with several gifts. Many adults will recall their younger days and their piano and recorder lessons with Betty Pride.

Whilton WI remember her as a loyal (founder) member who joined in all the activities.

Apart from music, Betty enjoyed winemaking, gardening and walking.

The words kindness, patience and loyalty are a fitting description of Betty and all of us who were privileged to know her will remember her with affection.

Trudy Haynes

Betty, together with her sister Freda, were always so welcoming: it would be "come in and have a cup of tea" and I would be sat by the fire if winter or in the conservatory in summer. The tea was always accompanied by homemade cake or Betty's special delightfully tasty shortbread.

I was invited on several occasions to accompany them on blackberrying trips to the Dodford area and tramped over fields to where Betty knew of abundant bushes of juicy blackberries. Afterwards Betty made them into jam or wine. Her homemade wines were very special and at Harvest Festival auctions the bidding for them reached very high amounts.

The sisters would often be seen along Brington Lane collecting litter; caring for the countryside they loved. They will be remembered as devoted sisters who were always kind and welcoming to us all.

Janet Bowers

THE PRIDE FAMILY WISH TO THANK ALL WHO WERE INVOLVED WITH BETTY'S FAREWELL SERVICE AND THE MEMBERS OF THE CONGREGATION WHO CAME TO PAY THEIR RESPECTS TO HER

PARISH MATTERS

The second week of January brought the first meeting of Whilton Parish Council in 2005. Five of the seven Councillors were able to attend with District Councillor Wendy Amos and County Councillor Richard Amos visiting for part of the meeting. Four other parishioners were present.

MONEY MATTERS

There was a number of payments to be made, amounting to £1434.49. These included bills for work to the trees, repairs to the grass cutter and printing the Newsletter, besides the Clerk's salary, street lighting electricity, the lighting maintenance bill, our subscription to the Open Spaces Society and Anglian Water's charge for water at the allotments. Of this £148.93 is VAT and will be reclaimed by the Council. Although this is recorded in our accounts, it has not been noted in our minutes and agendas. It was agreed to show the VAT which we reclaim in future agendas and minutes.

PLANNING

The Councillors considered two planning applications for **Manor Barn** in Manor Lane. The plans are to insert a glazed screen in the existing barn doorway and to make a new opening with another glazed screen, beside other internal alterations. Councillors made no observations on this application.

A second application was from **Whilton Locks Garden Centre**, who wish to erect a storage building. Again Councillors looked at the plans and made no comments. These applications will be considered by the District Council.

Meanwhile planning permission has been granted for:

- the construction of a shed or garage at **Fieldview**, Wadd Close,
- the refurbishment of the **Village Hall** toilets and a handrail
- a change of use from agricultural land to part of the garden of **Courtyard Barn**
- retrospective permission for the conversion of an agricultural building to a music room at **Home Farm**.

HIGHWAYS, HOLES AND HOPE

As usual problems over the roads took up much of the meeting. Philip Waights, who is our Highways Representative, attended a meeting in early December. He had hoped for a ruling over concerns that highway representatives, path wardens and snow/salt wardens might be held personally liable, if anything went wrong as part of their volunteering. He reported that he found the meeting inconclusive, as there was no legal advice.

Philip Waights (Highways Representative) and Maurice Clements (Footpath Warden) were both present at the Parish Council meeting and agreed to continue in their volunteering, on the understanding that their role will be to give information and liaise between the parish and county.

They will not complain or pass on information on behalf of members of the public, but will give people information about how to do it themselves. We have to report our own potholes!

The duty of the Salt/Snow Warden (Janet Bowers) is just to ring the County Council when the salt boxes need to be refilled, not to clear the roads or paths for other people.

Philip also told us that there are to be changes in the way road problems are reported from April. We hope to give details in the next Newsletter, but as the new call centre will be in Northampton instead of Edinburgh, perhaps there may be a better service?

The Parish Council has had an acknowledgement following our latest letter of complaint about the state of the roads and the unacceptable level of repairs. Philip Waights has had a site meeting with the technician, who promised remedial work "after Christmas" and has requested money for resurfacing in the coming year. We wait in hope!

Meanwhile the Chairman, Mike Lewis, thanked Philip for all the time and effort he gives on behalf of the parish. We all use the roads and complain about them, but Philip is trying hard to get some action.



TRANSPORT MATTERS

We are all reminded that Whilton does now have a bus service, subsidised by the County Council. This links us with Norton, Brington, Harlestone and Northampton.

The bus runs on Wednesdays and Saturdays as follows:

	Wednesday	Saturday
Norton, White Horse	10.04	09.04
Whilton, South View	10.11	09.11
Great Brington opp. Fox and Hounds	10.17	09.17
Little Brington opp. Green	10.20	09.20
Upper Harlestone Post Office	10.27	09.27
Northampton Bus Station	10.45	09.45
Northampton Bus Station	13.15	12.15
Upper Harlestone Post Office	13.33	12.33
Little Brington opp. Green	13.40	12.40
Great Brington opp. Fox and Hounds	13.43	12.43
Whilton, South View	13.49	12.49
Norton, White Horse	13.56	12.56

OTHER MATTERS RAISED AT THE PARISH COUNCIL MEETING

In the last issue, there was an article about possible Village Hall developments. The responses to this were discussed at the Parish Council and are described in another part of this Newsletter.

Information from the Standards Board for England, from NALC and several magazines and newsletters was noted and will be circulated among the Councillors.

At the end of the meeting Mike Lewis reported on the petition of Daventry Villages Together, saying that as a result there is a little more local accountability in the Urban Development Corporation with the inclusion of two more elected representatives. However, the formal order for the Urban Development Corporation has now gone through.

Mike had responded to the NCC Local Transport Issues Paper for consultation. He distributed copies of his response and the Issues Paper Consultation responses for Councillors to study.

District Councillor Wendy Amos and County Councillor Richard Amos reported that there is an appraisal of council house stock going on, that the hearing on the Local Minerals Plan will start in March and that the outgoing Chief Executive of the Daventry District Council is to be replaced with a corporate board of four directors.

Following discussion about speed and accidents on the main road, despite the new white road markings, the Clerk was asked to request urgent action from the County Council, lest more deaths occur on this road between Gipsy Spinney and the turn into Whilton.

The next Parish Council will be on Monday 14th March.
As usual this will be a public meeting and everyone is invited to attend.

Anthea Hiscock
Clerk to the Parish Council



LOCAL PAPERS DELIVERED



Did you know that you can have the Northampton Chronicle & Echo delivered to your door in Whilton? If you would like a paper, please telephone the Chronicle & Echo on 01604 467000 and they will pass on your order to me.

I also deliver the Daventry Express on Thursdays. If you are interested please contact me direct on 01327 842618.

I am sorry I can only deliver to Whilton and not Whilton Locks.



Your local paper boy - Tom Kane

WHILTON VILLAGE HALL

The Village Hall and its facilities or lack of facilities have been topics of debate for at least 20 years. We now may have a solution in that Mr John Townley has offered the village Gamages field (opposite Hill Top Farm) on which a new hall and play/sports area could be sited. In exchange we would transfer the ownership of the existing village hall to the Townley family. There are obviously conditions attached to the offer but this is an opportunity which can only proceed with the involvement of the village and a tremendous amount of hard work over 3-5 years. To assess the interest in this project, it would help the Hall Committee if you would fill in and return the questionnaire below.

Whilton Village Hall Management Committee

✂.....✂

To be viable the hall must have the appropriate facilities for the projected usage. Please indicate below your ideas, bearing in mind that we will not get any grant aid if we do not have a viable business plan with respect to usage/income. Please tick and add your choices.

Name and contact details.....

Facilities

Would a new hall be beneficial/ sustainable	
Members Club / Licensed bar	
Catering for hirers outside the parish	
Stage/lighting	
Badminton	
Long mat bowls	
Soccer pitch/ sports field	
Children's' play area	

Indicate other facilities / suggestions:

Would you be prepared to join the Project Team?

What skills could you offer to such a project

Please return to:

Derek Brown, Cherry Orton, Whilton or
Mike Lewis, 3,Whilton Locks Cottage, Whilton Locks by 9th Feb 2005

SEE SEPARATE FLYER FOR YOUR RESPONSE

LIBRARY SERVICE:- THE COUNTY LIBRARY VAN CALLS IN THE VILLAGE EVERY OTHER TUESDAY (EXCEPT SOME PUBLIC HOLIDAYS) AT APPROXIMATELY 9.10 AM TO 9.30 AM AND STOPS OUTSIDE THE 'OLD PLOUGH'. THE DATES FOR FEBRUARY ARE 8TH AND 22ND AND FOR MARCH 8TH AND 22ND



WHILTON GARDENERS' ASSOCIATION



Come and Join Us in 2005

Following a very successful 2004, the WGA is looking forward to 2005 and packed programme of events. Our calendar looks like this:

- | | |
|--|---|
| 7th February 2005 - Meeting | Subject: Restoring the Gardens of Kelmarsh Hall
Presenter: Esther MacMillan |
| 4th April 2005 - Meeting | Subject: Low Maintenance Gardening
Presenter: Maurice Billingham |
| 17th April 2005 – Garden Visit | Kelmarsh Hall |
| 6th June 2005 – Meeting | Subject: Hardy Geraniums
Presenter: Gerald Sinclair |
| 3rd July 2005 – Garden Visit | The Old Rectory Gardens, Sudborough |
| 1st August 2005 – Garden Visit | A visit to three gardens in Whilton followed by wine & nibbles. Meet 7.30 at the Village Hall |
| 3rd October 2005 - Meeting | Subject: Cottage Gardens
Presenter: Kitty Billingham |
| 8th October 2005 – Garden Visit | Westonbirt Arboretum |
| 5th December 2005 – Annual General Meeting- | Round up of the year and Social Evening |

There will also be social events and opportunities to visit some of the large garden shows during the summer. So if you want to learn more about gardening, see lots of beautiful gardens, or simply meet more people from Whilton, do get in touch in with us on **01327 844182** for more details, or come along to any of our meetings – they all start at 7.30pm.

Neil Phillips, Secretary, WGA

A Surprise Visitor to Whilton

At this time of year in particular many of us feed the birds in our gardens. Whilst many of you may be familiar with more common birds: the Blue Tits, Greenfinches and Goldfinches, we also get a number of winter visitors, such as Redwings and Fieldfares. These relatives of our Song and Mistle Thrushes have come from Scandinavia to spend the winter with us. This year has seen a large influx of birds from Scandinavia, but one of these visitors normally does not reach this far south. Until Friday 21st January, that is. The bird in question is a favourite of all birdwatchers, the Waxwing. Several thousand arrived in Britain in October but stayed in Scotland. Since then they have steadily moved south and have recently reached Corby and Rugby.

On the Friday morning in question Whilton at last had its own Waxwing. We first saw it in our apple tree and were lucky enough, to be able to watch it for several minutes until it flew off to feed in the rowan tree in the front garden of Meadow House. Superficially the bird looks like a starling, but if you look closer you will find that it is quite different. For a start it has a prominent crest, pale grey-brown plumage, a bright yellow tip to its tail and, white flashes and little waxy red spots on its wing, from which it gets its name.



Birdwatchers will often travel miles to see these birds, but I do not think we will be seeing an invasion of twitchers, most of them will have had plenty of opportunities to see this bird's relatives at other sites.

However, if you happen to spot this bird in your garden, do take a closer look – you will be lucky to see another one of these in your garden in the near future.

Neil Phillips, Cottam, Main Street



ROUGHMOOR SPINNEY



Since the October Working Party, caretaking visits on a regular basis have taken place and we are pleased to report that all trees have survived the recent gale force winds.

The next Working Party will take place on 6th February 2005. 2.00 pm - 4.00 pm when we will have six oak trees to plant and retying the name tags of some of the trees planted over the last two years. There will also be a certain amount of brushwood to burn and general tidying up.

Please do come and join us and enjoy fresh air and exercise.

Management Committee (Contact No. 842968)

ECONOMIES IN WAR TIME.

MESSRS. NEWNES have published a very interesting little book on "Economies: Real and Practical," by Clifford Munnings...

ECONOMY IN A KITCHEN.

- (1) Eat less meat. (2) Be careful with bread. (3) Waste nothing: there is never a need or justification. (4) Use home products whenever possible and use even these sparingly. (5) Before you spend anything think whether it is really necessary to do so.

ECONOMY IN THE HEARTH.

Have a plate of sheet iron put in fit exactly to the bottom of the grate. The fire will then burn brighter and keep in longer.

Instead of using wood to light the fire, take two or three old newspapers, twist them lightly and roll in a rug, like a tape measure, but loosely.

Coal is cheaper and gives greater heat than coal. A half-teaspoonful of saltpetre, mixed with half a cup of water, and poured over a scuffle of coals, will not only induce a brighter fire but make the coal last longer.

When the fire is burning briskly, lay a fire brick about two inches thick on the top. The heat will thus be thrown into the room.

Put a few coals on the fire periodically: do not throw half a bucketful on a low fire. Soak some waste-paper in water and roll it into balls; place these on cinders or coke and on them throw some slack. They can be left thus whilst the room is wanted.

To make a good fire, throw in bucketful of coals mixed with slack on the top of a good fire.

ECONOMY IN GAS.

- (1) Always see that lights, if not to be turned out, are lowered as far as possible when not actually using a room. (2) See that gas mantles are in order: very old or broken ones waste gas. (3) Don't light "rings" until kettles or other utensils are ready for use. (4) See that the flame does not rise in the tubes of the vessel. (5) When open boiler point is reached lower the gas to half or less. (6) When possible, use a double boiler or steamer. One gas ring can be made to cook a dinner. (7) When cooking is finished, turn the gas out. (8) An iron plate will retain the heat considerably, so that the gas can be kept lowered: food can be kept hot on it.

When cooking by gas see that the main stove tap is only half on. When frying, if an ordinary penny tin plate or a saucerpan lid is placed over the frying pan, and the steam kept in, the contents are improved and cooked more quickly and cleanly.

Dirt and smoke can be removed from gas mantles by sprinkling a pinch of table salt into them or by turning the gas down low until the smoke stains burn off.

Early to bed and early to rise: Reduces your gas bill to half its size.

ECONOMY IN CLOTHING.

Sir Leo Chiozza Money said recently: "In the middle of this big war the whole woman-kind of our country got out of tight skirts into full skirts at enormous expense, in the twinkling of an eye. It does not cost as much to change ten clerks from civilian attire into khaki as it costs to change the outward semblance of one fashionable woman."

Economise on clothes by renovation and by "making do." Use an old pair of shoes for "doing about." Boots

and shoes may be mended and strong by first washing in the dirt with tepid water and so on, and after drying the soles before a fire by applying several coatings of this varnish to: Copal one part, linseed oil diluted one part, and turpentine one part.

For stripes you can buy the following, which is a very economical polish for hair: Apples: May be gently heat a pennyworth each of beeswax, turpentine and boot ball (shoemakers') into three pennyworth of painters' drop black.

To renovate dark cloth caps or skirts: Boil ivy leaves and young shoots in water; strain it and when it is tepid spread the article to be cleaned upon the kitchen table; go thoroughly over it with a clean scrubbing brush, using the prepared water freely. Press while damp using a thin clean rag between the iron and cloth to prevent a shiny appearance.

Buy 2 oz. of pepper pods (dried). Two pods broken up will season a stew for six people.

Employer (to applicant for post as sales boy): "And how, my lad, do you know what the motto of this firm is?"

Boy: "Yes, sir, 'Push.' I saw it on the door as I came in."

Employer: "And what are you doing with when you get home?"

Boy: "Take my mind."

Employer: "Mind?"

Boy: "A snowed-out time."

A crowd leaned over the counter and yelled at a boy who stood close to an apple barrel.

Boy: "You trying to steal them apples, boy?"

"No, my son," the boy retorted, "I'm trying not to."

Chaplain: "What's the matter with the men, sergeant?"

Sergeant: "Fodder, sir, that's what they say."

Chaplain: "Curious. They were complaining only yesterday of short rations."

INTERESTING AND INSTRUCTIVE INFORMATION.

INLAND POSTAGE.

In the United Kingdom, the Orkney, Shetland, Scilly, and Channel Islands, and the Isle of Man.

Not exceeding 100 lbs. 1d. For every additional 50 lbs. 2d. Maximum length, 24 in.; width, 18 in.; depth, 18 in.

The prepaid postage for every copy not exceeding 50 lbs. in weight, 1d.; for every additional 50 lbs. maximum weight, 2d. Length, 24 in.; width, 18 in.; depth, 18 in.

Not exceeding 50 lbs. 1d.; for every additional 50 lbs. 2d. Length, width, and depth same as letters. Advice Notes, Invoices, Order Forms, Statements of Account, Printed Circulars, etc. in opened covers or unfastened envelopes, may be sent at book rates.

Letters, newspapers, or books posted unpaid are charged double on delivery; if insufficiently paid, double the deficiency will be charged.

LETTER RATES.

Not exceeding 400 words 1d. For every additional 400 words 2d. Maximum weight, 500 lbs. Wrappers to be marked "Sample Post" and made up so that contents can be easily examined.

POSTCARDS.

Official Postcards (Stout, 4 1/2 in. by 3 1/2 in.), with a 1d. impressed stamp, are sold at all post-offices, at the following rates: 1d. 1/2; 2d. 1/2; 3d. 1/2; 4d. 1/2; 5d. 1/2; 6d. 1/2; 7d. 1/2; 8d. 1/2; 9d. 1/2; 10d. 1/2; 11d. 1/2; 12d. 1/2; 13d. 1/2; 14d. 1/2; 15d. 1/2; 16d. 1/2; 17d. 1/2; 18d. 1/2; 19d. 1/2; 20d. 1/2; 21d. 1/2; 22d. 1/2; 23d. 1/2; 24d. 1/2; 25d. 1/2; 26d. 1/2; 27d. 1/2; 28d. 1/2; 29d. 1/2; 30d. 1/2; 31d. 1/2; 32d. 1/2; 33d. 1/2; 34d. 1/2; 35d. 1/2; 36d. 1/2; 37d. 1/2; 38d. 1/2; 39d. 1/2; 40d. 1/2; 41d. 1/2; 42d. 1/2; 43d. 1/2; 44d. 1/2; 45d. 1/2; 46d. 1/2; 47d. 1/2; 48d. 1/2; 49d. 1/2; 50d. 1/2.

PRIVATE CARDS.

Private Cards, bearing a 1d. stamp, may be sent as postcards. The maximum size is 4 1/2 x 3 1/2 inches; the minimum 4 x 2 1/2 inches.

LETTER CARDS.

Letter Cards, impressed with a 1d. postage stamp, are sold in packets of 12 for 1s.; singly, 1d.

PAYMENTS.

The Prepaid Rate is 4d. for the first lb.; 5d. for each additional lb. Limit of weight, 11 lbs.; length, 24 in.; width and girth combined, 4ft.

TELEGRAMS.

The charge for inland telegrams is 5d. for 15 words, and 1d. per word over 15. The address of the receiver is charged for, but not of the sender if written on the back of the telegram form.

MONEY ORDERS.

United Kingdom—1s. 2d.; 2s. 2d.; 5s. 2d.; 10s. 2d.; 20s. 2d.; 50s. 2d.; 100s. 2d. Foreign—1s. 2d.; 2s. 2d.; 5s. 2d.; 10s. 2d.; 20s. 2d.; 50s. 2d.; 100s. 2d. The limit for a single order varies in some countries.

POSTAL ORDERS.

Postal Orders are issued in the United Kingdom, and in Malta, Gibraltar, India, Straits Settlements, Hong Kong, British Guiana, and Newfoundland. Each Order is payable at all Money Order Offices in the United Kingdom. If not presented for payment within three months from the last day of the month of issue, a fresh commission will be charged. 6d. to 15s.; 15s. to 100s. up to 100s., 1/2d. O.A. passes not exceeding five can be paid by selling stamps not more than three in number.

P.O. SAVINGS BANKS.

Sum of not less than 1s. may be deposited at any Money Order Office in the Kingdom. Not more than 50 received in one year (Dec. 31), nor more than total exceed 5000 inclusive of interest. The total limit for Investments in Government Stock is 5000.

THE SEASONS.

Spring begins Mar. 21 | Autumn begins Sep. 23 Summer " June 24 | Winter " Dec. 21

QUARTER DATES.

ENGLAND AND IRELAND.—Lady Day, March 25; Midsummer, June 24; Michaelmas, September 29; Christmas, December 25. SCOTLAND.—Landisday, February 1; Whitsun, May 15; Lammas, August 1; Martinmas, November 11. The removal terms are May 25 and November 25.

HOLIDAYS.

ENGLAND AND IRELAND.—Good Friday, April 6; Easter Monday, April 9; Whit Monday, May 28; First Monday in August, Aug. 6; Christmas Day, Dec. 25; Boxing Day, December 26. As the Customs House, Inland Revenue Office, and Dock, the King's Birthday is kept as a holiday; and as the Docks, Coronation Day.

SCOTLAND.

New Year's Day, Jan. 1; Good Friday, April 6; First Monday in May, May 7; First Monday in August, Aug. 6; Christmas Day, Dec. 25.

ECLIPSES.

During the year 1917 there will be four Eclipses of the Sun and three Eclipses of the Moon. January 26—A partial Eclipse of the Moon. June 13—A partial Eclipse of the Sun. July 4—A total Eclipse of the Moon. July 13—A partial Eclipse of the Sun. July 14—An Annular Eclipse of the Sun. July 26—A total Eclipse of the Moon.

CHIEF ARTICLES OF THE CALENDAR. Golden Number, XVIII. Epoch, 6. Solar Cycle, 28. Dominions, Letter, G. Roman Indiction, 15. Julian Period, 6500. The Russian New Year (Greek Calendar) commences January 14.

Safeguard your Health with Dr. J. Collis Browne's CHLORODYNE THE RELIABLE FAMILY MEDICINE. Used with unwavering success by doctors and the public in all parts of the world for upwards of 60 years. Effectually cures short attacks of PALPITATION, SPASMS, Hysteria, A train palliative in NEURALGIA, GOUT, RHEUMATISM, MIGRAINE, Cholera and various FEVER, CRAMP, AGUE. Acts like a charm in DIARRHEA, COLIC, and other bowel complaints. "DR. COLLIS BROWNE."

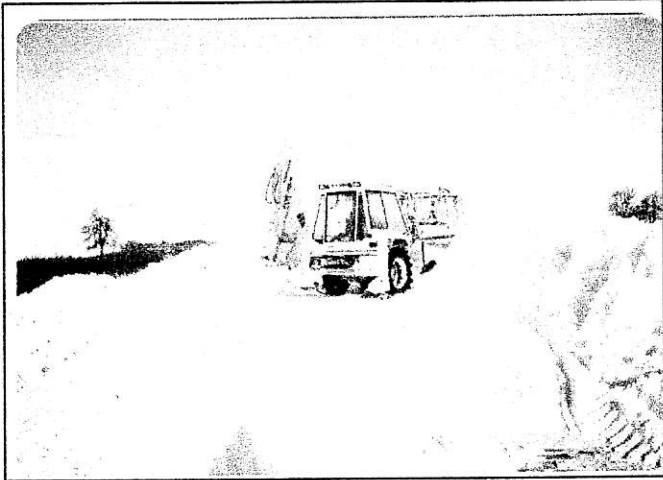
ALWAYS ASK FOR THE SAFE WASHER COMPO THE SAFE WASHER For Washing Everything STILL THE BEST.

Photographs taken in Whilton 1982 by Janet Bowers. The road was blocked up to Flore crossroads for a number of days and there were some stranded cars and residents had to make their way home as best they could.

During this period we had quite a few winters with heavy snow and because of the terrain, Whilton has this tendency to get cut off!!



Icicles at Heritage, Brington Lane



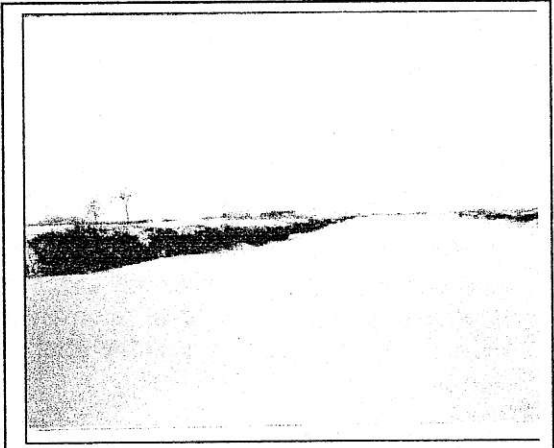
Nobottle Road between ▲ & Brockhall Lane



Whilton Church Path



Brington Lane



Northampton side of the ▲ top of village

CHURCH MATTERS



Our Rector - Rev Chris Goble works from Brington Rectory and can be contacted on 01604 774042 or E-mail chris@spencerbenefice.freeserve.co.uk

In our world there have been many natural disasters. Pompeii has been a famous one, and there has been recently renewed interest in it. We could probably chart different natural disasters throughout our world, where through no obvious fault of humanity we have been subjected to nature. Of course it is still worth noting that humanity has killed more of its members than nature has ever done. We need to respect nature. The world, like humanity, is imperfect and needs to be respected. The Bible talks about creating a new world, fully acknowledging that the world is not a perfect place. The questions that the Bible addresses are not why do natural disasters happen, but rather how do we react when we see people in poverty, unjustly imprisoned, hungry, thirsty, without

appropriate shelter or clothing. It is great to see people acknowledging that the people of Asia are our neighbours, and doing much to help them. There is much still to do, both in Asia, where support will need to be ongoing, and also in other places in our world. We in the West could do much to stop poverty. In our world a child dies of poverty every 3 seconds, and during this year 12 million people will die whose crime is poverty. Can I encourage you to love your neighbour, and help them to live decent lives. To find out more about the Make Poverty History visit www.makepovertyhistory.org or visit Oxfam shops. 2005 has started with shock at a natural disaster and then an outpouring of love, let us continue that through the year and seek to make a difference.

The Bringtons and Nobottle have produced a 'calendar girls' type calendar with both girls and boys (of varying ages) taking part. To get your hands on one of these exciting calendars either call in at one of the pubs, businesses or post office in Brington, or call me, or E-Mail calendar@nobottlegrange.co.uk
All the money raised from this calendar will go to the Asia tragedy appeal.

Rev. Chris Goble

CHURCH NEWS - PAST

Christmas has come and gone and now seems a long time ago - at St Andrew's it started with the Christingle celebrations and was well supported. The congregation having all received their oranges, candles were lit and the lights switched off and the Christingle hymn sung in this magical atmosphere. In her talk (story of the lamb who strayed), Revd. Sharon Goble had the congregation providing the sound effects - baaing and growling.

This special service raised £107.91 for the Children's Society

On the following Sunday - the Carol Service, 90 parishioners joined together to sing traditional carols and hear the Christmas message and like Sharon Goble, Revd. Chris had the congregation partaking in his talk, filling in the names and places he claimed to have forgotten.

Christmas Day Family Eucharist was not so well attended as previous years which, unfortunately, will reflect in the returns to the Diocese as Christmas Day and Easter Day are both highlighted as special occasions. On these returns we have to record attendance on all the Sundays of a specified month and the average Sunday attendances for the whole year (adults and juniors under 16) also numbers on the Electoral Roll.

The year closed with the wedding of Nicola Oldring and Anthony McKeever of Whilton Lodge. This was a splendid occasion with 100 guests in church and Nicola arrived to a trumpet fanfare. After the ceremony the happy couple left to the sound of bells. We wish them every happiness in their married life together.

Through the Christmas season the church looked lovely with its red white and gold decoration theme. The Christmas tree, window decoration, holly balls and garlands encircling the pillars were carried out by a hardworking team of volunteers. Thanks to all who were involved for their time and skills.

CHURCH NEWS – FUTURE

St Valentine's Day - On Sunday 13th February 2005 a special St Valentine Songs of Praise will be held at 6.00 pm in St Andrew's Church when we may recapture memories of wedding day hymns. Do come and join in, remember that all-important day and stay after the service for refreshments.

Women's World Day of Prayer – Friday 4th March 2005 at 7.30 pm this year at Whilton. The Ecumenical Service will take place led by the Revd, Sharon Goble. The country for this year's theme is **Poland**. Refreshments after the service.

Mothering Sunday – Sunday 6th March 2005 we come together at 11.00 am to give thanks to mothers for all they do and for all their love. Each mother will receive a posy of flowers during the service.

Palm Sunday – Sunday 20th March 2005 at 10.00 am, which is a Benefice Service, will be at St Andrew's Whilton when we will process into the church. Please come and join us.

Good Friday – There will be a quiet Service of Compline at 7.30 pm in St Andrew's Whilton.

Easter Day – We will celebrate with a Family Communion Service at 6.00 pm

Annual Church Meeting – This will take place shortly which includes a report on the fabric and contents of the church. **At the moment we are missing two hymn books and one bible.** If you have unknowingly taken any of these home with you (easily done when talking on the way out of church), will you please return it as soon as possible to Janet Bowers.

Can you help? – Is there anyone in the vicinity of the church who will be kind enough to put the dustbin out each week and return when emptied? It will be greatly appreciated if there is someone who is willing to carry out this task.

Janet Bowers

FLOODLIGHTS

THIS FACILITY IS AVAILABLE FOR ALL CELEBRATIONS OR TO REMEMBER A LOVED ONE OR IF YOU WOULD JUST LIKE TO SEE THE CHURCH FLOODLIT.

FOR A REASONABLE COST. THE CHURCH CAN BE FLOODLIT FOR THE EVENING MAKING ANY OCCASION VERY SPECIAL FOR YOU.

Janet Bowers



USED STAMPS



Only four people so far brought stamps to me. Fortunately one offering was a plastic carrier bag half full. With the addition of the stamps I already had, made a worthwhile amount for the Macmillan Cancer Care. Don't forget I save stamps all year round and they can be left in the porch by the back door of the Old Plough.

Trudy Haynes

Whilton Village Hall 200 Club Draw

NOVEMBER

1st Prize	104	J Gardner	£40
2nd Prize	067	R Hawkins	£20
3rd Prize	107	N Hill	£10



DECEMBER

1st Prize	096	M Seth-Smith	£40
2nd Prize	052	J Ponder	£20
3rd Prize	078	G Tilston	£10

Congratulations to all the winners

Whilton Carol Singers would like to thank everyone for supporting them and giving so generously on Tuesday 21st December 2004.

A total of £200 was collected and this year the money donated was sent to the Warwickshire & Northamptonshire Air Ambulance.

 <p>Warwickshire & Northamptonshire Registered Charity Number: 1098974</p>	WARWICKSHIRE & NORTHAMPTONSHIRE AIR AMBULANCE	Fire & Rescue Building, Coventry Airport, Baginton, Coventry CV8 3AZ Tel: 02476 639043 Fax: 02476 307947 appeals@wnaa.co.uk
11 January 2005		
Mrs M Emery Hilltop Farm Whilton Daventry Northants NN11 2NN		
Dear Mrs Emery		
<p>Thank you so much for the very valuable support to our Air Ambulance. The donation of £200, raised from your village Carol Singing, is another vital contribution to keeping our voluntary emergency medical service going and helping the people of Warwickshire and Northamptonshire. I am pleased to enclose our official receipt number 3707.</p> <p>As we receive no funding from either Central Government or the National Lottery, we are entirely reliant on voluntary donations and support from our communities. I cannot stress enough how important it is that as many people know about our work as is possible. As you have already demonstrated your commitment to us, please do tell everyone else you know about us, people like you spreading the word will achieve an awful lot for us in the long run.</p> <p>Since our launch in October 2003 we have flown over 1,600 missions and saved many lives and it has only been possible because of the support we receive, so you really are making a difference to people in our region.</p> <p>Please accept our sincere gratitude for your efforts and we wish you all a Happy and Healthy New Year.</p> <p>Kindest regards</p> <p></p> <p>Carol Shaw On behalf of everyone at your Air Ambulance</p>		

WHILTON WI – JANUARY 2005 MEETING

During the business part of our meeting it was reported that the December Member's Night was very enjoyable. The food and drink were very good (as usual) and the quizzes and conversation were entertaining. The members made hats to wear with the theme of Christmas carols.

Fund-raising was discussed and final arrangements were made for the Kir & Canapés evening at Ian's & Teresa's on 15th January. It was agreed that the proceeds of the tickets and raffle would go to the Tsunami Fund and the money

taken for the WI produce stall there was for Whilton WI Funds.

We welcomed Mrs Clare Tilston who brought all sorts of materials for a card-making workshop. She demonstrated the method and assisted us with our efforts. The theme was a heart using an iris folding method – just right for St Valentine's Day. Our results were colourful, interesting and in some cases, very artistic.

Shirley Brown

The February Meeting includes a talk by the police from the East Midlands Air Support Unit. Please do come and join us on Wednesday 9th February 2005



SMILE PLEASE

Holy Moses

Below is a selection of answers given by children taking a Religious instruction exam.

They are printed as written with original spelling

- Noah's wife was called Joan of Ark
- Christians have only one spouse. This is called monotony.
- The epistels were the wives of the apostals.
- The Egyptians were all drowned in the desert. Afterwards Moses went up to Mount Cyanide to get the ten ammendments.
- One of the oppossums was St Matthew who was also a taximan.
- Samson slayed the Philistines with axe of the Apostles
- Solomon, one of Davids sons, had 300 wives and 700 porcupines



GIGGLES

AN INCOME IS WHAT YOU CAN'T
LIVE WITHOUT OR WITHIN



GIGGLES

SOME PEOPLE WHO AREN'T
PAID WHAT THEY'RE WORTH
SHOULD BE GLAD.

Thought for the Day

No matter how well you
nurse a grudge, it will
never get better!



NEIGHBOURHOOD WATCH



There have been no incidents to report in the village although a car was broken into in the vicinity of Whilton Lodge.

Whilst we have been lucky the criminal fraternity have been busy elsewhere. Bogus "Water Board" officials abound. The police especially want to interview two ladies, one an Asian who try to sell cheap electricity deals of which the companies know nothing. If you are approached please tell the police. Others try to obtain access by seeking to sell security equipment by phone and asking for an appointment to view. Others phone pretending to be from an official body and ask for pension Pin Numbers. No authority would ever ask for this information over the phone

In the vehicle area a relatively new ploy is to target farm vehicles left in gates with the keys in the ignition whilst the farmer looks at stock. An even newer one is to drill and drain fuel tanks.

We have been lucky recently but be on your guard !

Remembrance Day – Poppy Appeal

I am pleased to report that the total sum raised by the door to door collection was £163-26 demonstrating once again the generosity of residents in this very worthy cause. Special thanks to Johnathon Hanslip who undertook the collection at the top of the village.

This year the wreath was laid by Mr Jeremy James late of the Green Howards.

Many thanks to all who contributed.

Philip Waights



You are welcome to join us at

B'B's

Benefice Beginners

Free for under-5s (including babies) and their parents/carers

Meeting weekly on Thursdays, (except in school holidays)

from 2 - 3:30pm at the Harlestone Institute

Adults will be welcomed from 2pm with a mug of tea or coffee while the children play. At 2:30pm we then join together in a smaller room to sing, pray and learn about our Christian faith through stories, activities and simple crafts. We finish the structured session by 3pm to allow more time for play, or for anyone who needs to get away to meet older children from school.

Riddle:

What is:

Greater than God?

More evil than the devil?

The rich want it?

The poor have it?

(Answer on next page)

Kir & Canapés - 15th January

Walking through the village one cold, damp and windy morning in January I tried to imagine how we would cope if our village had been completely washed away and we were left only with the clothes we stood up in. No buildings to shelter in, no weatherproof coats or warm clothes, nothing comfortable to sleep or even sit on, not knowing when we would next have clean drinking water or food, not knowing whether the rest of the world knew of our plight and if anyone would mobilise to provide timely aid. Perhaps not even being able to find all our family members and unsure whether the catastrophe would strike again. It was difficult to contemplate and impossible to truly imagine.

When we first decided to run this event for WI funds no one could have predicted the devastating events that were to unfold in Asia. Naturally the committee had a rethink and agreed that the primary purpose of the evening should be to raise funds for the Disaster Emergency Committee (DEC).

The Kir and Canapes evening was exceptionally well supported not only by WI members and their partners but also by non members, some from outside the village.

We were especially delighted to welcome Anne and Graeme Kilgour who used to live in the bungalow in Wadd Close and had travelled from Oundle for the evening. The canapés were provided by the members and, in true WI tradition, were delicious and were polished off in no time. So many raffle prizes had been donated that the draw seemed to go on forever and a silent auction for a donated car accessory raised £65.00. The produce stall – which was for WI funds – was sold out in record time, one moment the dining table was groaning under the weight and the next it had been cleared! No surprise really, after all who can resist a home baked cake or preserve?

Thanks to everyone who provided raffle prizes, who helped on the evening, provided produce and those who came along and spent lots of money. Thanks also to the people who were unable to join us on the evening but made a donation anyway.

The total amount raised was £425.95 for DEC (though this will be worth more to the charity as many people were able to sign a Gift Aid form) and £63.20 for Whilton WI.

Once again, the good people of Whilton have shown they know how to put the fun into fundraising.

Teresa Leadbetter

The Woolies

by Noah Price

The Woolies were not getting fed well by Farmer Bob, infact they were starving

I have a Plan

I am Hungry

So the Manager told Farmer Bob that his lambs had escaped...

Farmer Bob
Your lambs
are making
chaos in
this store!

Then they saw the Garden Store

Garden Store

Plant Sale

Looks lovely

You have been very BAD!

PET STORE

WHAT!

We will try again in 2 the next months

To be continued...

SUMMARY OF EVENTS

Sun	6 th	Feb	2.00 pm	Working Party in spinney
Mon	7 th	Feb	7.30 pm	W G A- Restoring the Gardens of Kelmarsh Hall - in Village Hall
Tues	8 th	Feb	9.10 am	Library Van in village outside The Old Plough
Wed	9 th	Feb	7.30 pm	WI – East Midlands Air Support Unit -Village Hall
Tues	22 nd	Feb	9.10 am	Library Van in village outside The Old Plough
Sun	6 th	Mar	11.00 am	Mothering Day Service in St Andrew's Church.
Tues	8 th	Mar	9.10 am	Library Van in village outside The Old Plough
Wed	9 th	Mar	10.00 am	WI – Weather Talk – Village Hall
Thurs	10 th	Mar		<u>Newsletter Deadline</u> – Please hand in your contribution well before this date or otherwise we cannot guarantee it will be included in the next edition.
Mon	14 th	Mar	8.00 pm	Parish Council Meeting in Village Hall
Tues	22 nd	Mar	9.10 am	Library Van in village outside The Old Plough

The Whilton Newsletter is published bi-monthly and circulated free to every household within the Parish boundary. The costs are met by the Parish Council. The Editors are:

Derek & Shirley Brown - Cherry Orton, Main Street. - 01327 842968
E-mail – shirdek@btopenworld.com

Sara Meadows - Courtyard Barns, Manor Lane – 01327 844211

We are always pleased to receive additional contributions from people who do not normally have an input, especially children. Noah Price has drawn us some amusing cartoons for which we are very grateful.

Please supply a disk with your contribution if possible so that we can manipulate the text to fit if necessary. If you do not have a PC or typewriter the editors will type the articles as we have always done in the past.

Articles of local interest, poems, recipes, puzzles or drawings will always be considered for inclusion in the Newsletter.

Any contributions for the newsletter to any of the Editors .

by the deadline date please, - this is earlier as the school (where this printed) break up for Easter in mid-March