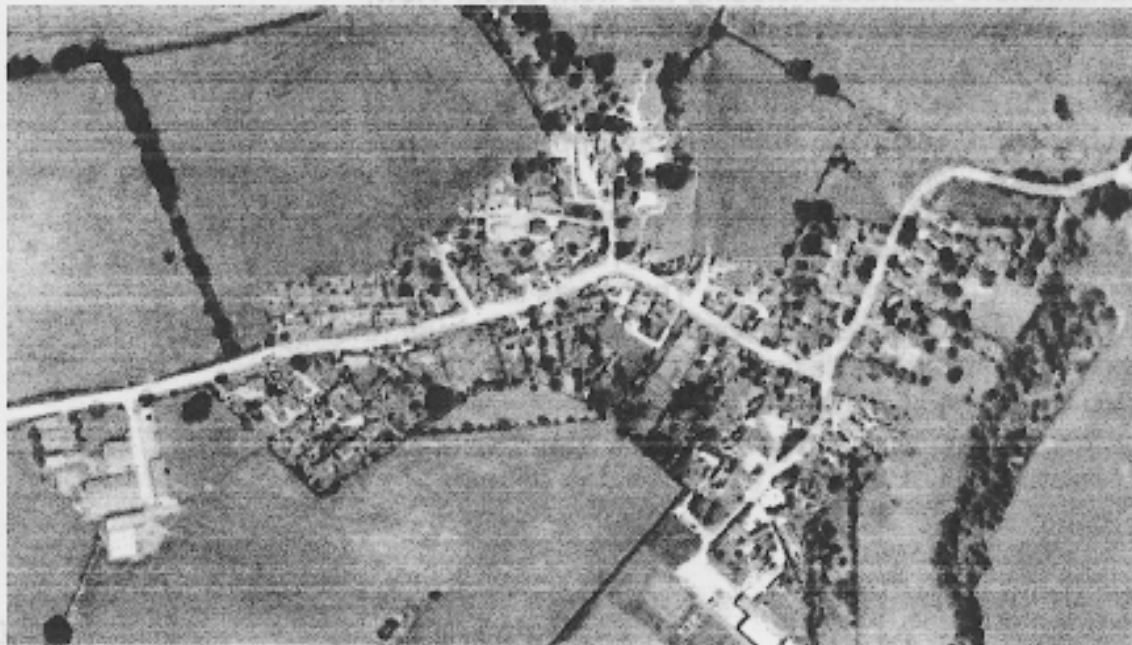


# WHILTON NEWSLETTER

**FEBRUARY & MARCH 2008**



## Aerial Photograph of Whilton Village 2005

### In this issue

- Parish News
- Church News
- Whilton Gardeners' Assoc.
- Whilton Photographic Club
- Neighbourhood Watch
- Whilton Local History Society.
- Brington School
- Social Lunch
- Details of future events

*Happy*  
  
*Easter*

PARISH MATTERS  
2008

FEBRUARY & MARCH 2008

PARISH OPINIONS

The Parish Council met on 7<sup>th</sup> January, with three Parish Councillors attending. It began with an open forum. Four parishioners attended including two from South View, besides Councillor Nora Swinford. There was some discussion about the proposal to plant a hedge along the fence line in front of South View, and the residents there wished to make it clear that they are opposed to this idea.



No decision was made about this matter, because Nora Swinford declared an interest in this, and there were only two other Councillors present. There was thus not a quorum to make a decision on this issue. However, the information from the discussion and the letter received from residents of South View will be available, when the hedge planting is raised at the next Parish Council meeting.

FINANCE

The budget for 2008-9 was agreed, and it was decided not to include a new street light in plans for 2008/9.

The precept was set for £5750, with the expected use of the money as follows:

2008-9

Administration	1500
Clerk's salary	1100
Parish Clock	100
Newsletter	350
Churchyard: maintenance and fund towards new mower fund	400
Allotments	175
Street lighting	800
Street furniture	275
Parish Plan	250
Roughmoor Spinney	450
Trees	100
Section 137	20
<b>TOTAL</b>	<b>£5520</b>

Intended Reserve Fund

Mower replacement fund	600
Unforeseen expenses/contingency fund	4400
<b>TOTAL</b>	<b>£5000</b>



Wilton Local History Society  
Bridgton School  
Social Lunch  
Details of future events

Various projects were considered for the coming year, including the repair of the dry stone wall near Kunda Cottage. Although this is seen as a village feature, it is private property, and therefore is unlikely to fit the criteria of any grant scheme. It was agreed to put this matter on hold, although Mr Lye offered to continue to investigate further.

It was agreed to apply for a grant, through County Councillor Steve Osborne, towards replacing the seat on the Green in a better position, where bird droppings and drips from the tree do not discourage people from using it.



### **PARISH PLANNING ISSUES**

Notification has been received of planning permission for a swimming pool, pump room and shower room at Manor Barn.

Mike Lewis, the chairman, explained that the Parish Design Statement consultation period has ended, and he is unaware of any problems arising from it. It is hoped that advance payment for the printing can be arranged, before our grant expires. An extra £250 has been included in the budget in case there are any problems over this.

### **Wider planning issues**

Mike Lewis reported that:

- Daventry Villages Together had responded to the Middlemore Core Strategy Issues of the Joint Planning Unit, and the Parish Council working party had responded to the West Northants Development Corporation's Core Strategy Issues and Options Consultation and copies are available.
- he and Greg Lye are both willing to continue to attend liaison meetings with the WNDC, as it is considered there will be an impact on Whilton and the area around.
- he has responded to the Daventry Infrastructure Strategy, agreeing with its objectives, but asking that its boundaries should be extended to include to C5 road (the Nobottle road).
- he and Greg Lye will attend an independent planning seminar on 23<sup>rd</sup> January, where they hope to obtain information on how to get disinterested advice, and how to oppose aspects of the Daventry Infrastructure plans which are not wanted.



## **ROADS AND RISKS**

There was some discussion about the safety of the unofficial steps down the bank to the road from the allotments. It was agreed that the Clerk should ask the allotment holders not to use these steps, and that if necessary the top of the steps should be taped off.

There is no further information on village drainage problems. NCC/Atkins have stated that an investigation will be programmed and that we shall be advised of the outcome.

It was noted that the white markings have still not been reinstated on the main road between Gypsy Spinney and the village turn. The Clerk was asked to contact NCC/Atkins.

## **DATES FOR MEETINGS 2008**

After reviewing the past year's six weekly meetings, it was agreed to revert to bi-monthly meetings on Mondays in 2008, as follows:

7<sup>th</sup> January

3<sup>rd</sup> March

12<sup>th</sup> May (Annual Meeting)

7<sup>th</sup> July

1<sup>st</sup> September

3<sup>rd</sup> November.

Extra meetings will be called if required.

**The Annual Parish Meeting** will be held on Monday 28<sup>th</sup> April 2008 to which all parishioners are invited and at which anyone may speak. Meanwhile all are also welcome to attend the next Parish Council meeting on 3<sup>rd</sup> March.

Please note that there is a vacancy on the Parish Council.

If anyone is interested in becoming a Councillor or would like to nominate someone else, please contact:

The Chairman, Mike Lewis (842404)

or

The Clerk, Anthea Hiscock (843319).

Your Parish Councillors are:

Ken Bowers, Jonathan Hanslip, Greg Lye, Mike Lewis (Chairman), Penny Price and Nora Swinford.



## Brington Primary School

### Gosh, we've been busy!

We've been very busy at school since the last newsletter. Here's what we've been up to! Years 3 and 4 have taken part in a Champion Cluster Netball Tournament and all involved had a great time. Our basketball players are regularly competing in county-wide tournaments and Years 5 and 6 are off to Champion soon to take part in Sports Hall athletics.

Our clubs are once again well under way, with us currently offering football, French, basketball, painting, chess, cross-stitch and recorder clubs. Netball club will be starting as soon as the days become a little longer. We also have a number of football matches arranged for both our teams. Our French Club children performed a French play to their parents and friends.

Christmas was the usual whirl of activity. Years 5 and 6 were invited to sing at Althorp House, as part of the Althorp at Christmas celebrations. The children had a fabulous time and we received many compliments from the unexpectedly large audience! Our Christmas productions were a roaring success, enjoyed by both audiences and performers.

The children's Christmas Party this year took a different format, with the whole school being invited, by the Friends of the school, to go 'Bezerk', at the aptly-named play-palace in Northampton. Everyone loved climbing on the huge frames and sliding down the inflatable slides; not least the school staff, who joined in with gusto!



**Family Bingo Fun!**

**Friday 8<sup>th</sup> February**

**6.00 – 8.00pm at the school**

**Pay on the door**

### A Parish Challenge?

By 2026 more than 10,000 new dwellings are scheduled to be built around Daventry. Planning applications and supporting documentation are being received and assessed by the West Northamptonshire Development Corporation (WNDC) for at least 9,000 dwellings so far. The developer of Church Fields has options on all the land bounded by the A5, B4036 and the C5 (Norton to Nobottle) ie right up to our parish boundary.

Granted that the developments will bring new, bigger and better facilities closer to us, we should therefore consider the potentially negative aspects. The traffic implication from the two major potential developments for the C5 road is an increase from 400 vehicles per hour (our survey figures) to at least 1,000 vehicles per hour. There could also be pressure on rural areas to take more housing – not everybody will want to live in a 4,000 house estate.

We have taken steps to preserve our distinctiveness by completing a Design Statement which should be taken into account when assessing any applications that may affect us – but this is a passive action.

We have 3 active choices –

- a. assume the expansion of Daventry will not have any affect on us and not bother to get involved any further,
- b. get involved where we think that we will be affected,
- c. get involved anyway so that we are fully aware of what is proposed and seek to change any parts deemed to detract from our aspirations.

To help us make the correct choice we are proposing to invite an appropriate person from the DDC, WNDC or any of the supporting agencies to come to talk to us on any issues we have. This could be at the Annual Parish Meeting in April or earlier if deemed necessary/useful.

If you have any views on our strategy please contact Anthea Hiscock (Clerk to the Parish Council) or myself, Mike Lewis (Chairman).

# Whilton Photographic Club



## New Year – New Camera?

So, hands up – who had a new camera for Christmas?

Now the big question! Who understands how to use it?

Not so long ago cameras were simple point and click things. You bought the camera, you bought a film, put the film in the camera, then pointed it at someone and ....click. Done. Now take the film to Boots and show them to the family.

Digital has made everything so difficult. Now you have got menus, lots of jargon (white balance, ISO, program modes, etc.) and you can mess around with your pictures on your PC. Help!!!

If that is how you are feeling, help is at hand from the Whilton Photographic Club. We can help you understand your camera, how to prepare great images on your PC and learn what makes a good photograph. We have a whole bunch of interesting meetings, plus outings where you can learn to use your camera with the help of other club members.

**Meetings** (all meetings are held on a Tuesday at 8.00pm Whilton Village Hall)

February 12 <sup>th</sup>	Practical - Using your PC to improve your photos – Part 2
March 11 <sup>th</sup>	Talk - Photographing People (Portrait & Wedding Photography)
April 8 <sup>th</sup>	Assignment Review - Christmas images
May 13 <sup>th</sup>	Talk - Landscape Photography
June 10 <sup>th</sup>	Assignment Review - Landscapes
July 8 <sup>th</sup>	Flash Photography
August 12 <sup>th</sup>	Talk – Photographing in Tuscany
September 9 <sup>th</sup>	Assignment Review - Water
October 14 <sup>th</sup>	Talk - Black & white photography
November 11 <sup>th</sup>	Practical - Still life
December 9 <sup>th</sup>	AGM

## Outings

Sunday 3 <sup>rd</sup> February	Welney Wildfowl Trust	Birds
Sunday 25 <sup>th</sup> February	NEC, Solihull	Focus on Imaging Exhibition
Sunday 27 <sup>th</sup> April	Biggleswade	Aviation World 2008 – Shuttleworth Collection
Sunday 20 <sup>th</sup> July	Kelmarsh	Festival of History
Saturday 2 <sup>nd</sup> August	Stanford Hall	Firework Championships

If you want get more from your camera, contact me, or just come along to our next meeting.

Neil Phillips (Tel: 01327 844182, E-mail: [neiljphillips@hotmail.com](mailto:neiljphillips@hotmail.com))

### NORTHAMPTON COUNTY MOBILE LIBRARY SERVICE

VISITS WHILTON EVERY THIRD TUESDAY AND STOPS OUTSIDE THE OLD PLOUGH, MAIN STREET AT 9.15 AM UNTIL 9.30 AM.

THE DATE FOR FEBRUARY IS 19<sup>TH</sup> AND MARCH IS 11<sup>TH</sup>

## **Great Daffodil Run 2008**

**Sunday April 27, 2008 at Kelmarsh Hall**

**Help us to raise vital funds for**

**Marie Curie Cancer Care**

**Richard Bunce, Jeremy James, Stephen Denbigh & Joanne Grant will once again become one of the hundreds of Daffodil Runners attempting to complete the course and help raise vital funds for Marie Curie.**

**We will commence training once the rain stops! Please be generous with your donation, it doesn't get easier with experience!**



**THANK YOU**

### **WHILTON SOCIAL MEAL - 29<sup>TH</sup> NOVEMBER 2007**

A small dedicated group organised the above event and were assisted on the day by a number of helpers.

There were 16 who sat down to the lunch; the main course was beef or vegetable crumble, creamed potatoes and assorted roasted vegetables. When the desserts were served we were spoilt for choice and these were served with cream or yoghurt. There was red or white wine (which had been donated) or apple and pomegranate juices. The meal ended with a choice of tea or coffee and mints.

Frances Drake thanked all who had provided the meal on behalf of the diners.

I would like to add my personal appreciation for the time and hard work which resulted in such a happy and enjoyable event.

Trudy Haynes



**USED STAMPS**



**Teresa Leadbetter and I are collecting used stamps for the RSPB. British and foreign are acceptable.**

**If left for me, please leave on the windowsill in the porch by the back door of the Old Plough.**

Trudy Haynes



# WHILTON GARDENERS' ASSOCIATION



Our AGM took place on Monday 3<sup>rd</sup> December in the village hall. As has become the custom for the AGM each member brought along a plate of either savoury or sweet goodies for the buffet.

Following the election of officers the committee is now as follows:

Chairman	Ann Gilbert
Secretary	Jonathan Hanslip
Treasurer	Teresa Leadbetter
Events and membership	Olive Bardill-Tillott
Programme	Phil Grant
Purchasing	Jonathan Hanslip
General	Greg Lye

At the suggestion of one of the members we voted on changing the night of the week that we meet and Wednesday was agreed. The meetings in 2008 will therefore be on the first Wednesday of February, April, June, August, October and December.

## Benefits of membership

For only £7 per year you can join WGA and enjoy the following benefits:

- Six meetings per year – two of which are generally socials
- The opportunity to meet with like minded individuals, exchange hints and tips and to learn from our speakers
- Visits to members' gardens
- Discounts on seed purchases of up to 50%
- 10% discount at Whilton Locks garden centre (upon production of your membership card)

*To benefit, speak to any of the committee members about joining.*

**The next meeting will be on Wednesday 6<sup>th</sup> February 2008 at 7.30 pm in the village hall and will be a gardening themed quiz.**

## Freecycle - Daventry Group

What a wonderful idea, whoever came up with it deserves a medal. You know how it is, you have a clear out in the house, survey the pile of unwanted stuff and then think to yourself, "The charity shops won't take this but it's a bit too good to throw out." (*After all, that's why you've kept it all these years. You're sure it will come in handy again one day.*) "I'd better put it back in the cupboard / back of the wardrobe / loft until I need it again." And so the clutter goes back from whence it came - only it's a bit tidier this time - and is forgotten until the next clear out when you repeat the debate with yourself.

Well now there is Freecycle. You remember those riding boots that you haven't worn for nearly twenty years which you couldn't take to the charity shop because they're a bit too worn but still have some wear left in them?

Someone in the Daventry Freecycle group can make use of them and is prepared to come and pick them up. That year's subscription to *Extreme Origami* magazine - they will be snapped up, read and freecycled again and again and again.

Not only is a decluttered house / garage / garden good for the soul, think of all that stuff that isn't going into landfill. It's a *win-win* situation. You may even find that someone is offering that widget for the thingy that you broke years ago and have been unable to get a spare part for.

It's easy enough to join the local Daventry group - go to [www.uk.freecycle.org](http://www.uk.freecycle.org) and read all about it.





**Our Rector** - Rev Chris Goble works from **Brington Rectory** and can be contacted on 01604 770402 or E-mail [chris@spencerbenefice.freeserve.co.uk](mailto:chris@spencerbenefice.freeserve.co.uk)

Recently I bought a book by Ann Lewin called **Watching for the Kingfisher**, which is an excellent book of poetry reflecting upon aspects of the Bible and the Christian year, but it was especially the title which caught my imagination. Sometimes our search for God can feel like the elusive bird that we seek. Sometimes, and Lent is a good indicator of this,

we need to spend time to glimpse the glory, it may not come easy, and it may not be quick, but ultimately the search for glory is fulfilment. One aspect of this is to have a task each day to fulfil - and **Live Life, Love Lent** is a booklet and website that offers a task each day. <http://www.livelent.net/> is a good place to start!

### Life Calling

Life Calling is an exploration of what vocation is about: the call to know God and to allow that relationship to direct, shape and transform all of life. The focus is not just on what we do in church, or in our working life, but on the deeper issues of how we see and handle the whole of life.

Mondays during Lent

(11<sup>th</sup>, 18<sup>th</sup>, 25<sup>th</sup> February 3<sup>rd</sup> and 10<sup>th</sup> March)

10.00-11.30am or 7.30-9.00pm at Brington Rectory.

For more information call Chris on 01604 770402

(NB on 18<sup>th</sup> Feb 10.00am session is at Egerton Cottage, Main St, East Haddon and 7.30pm session at 4 Tilbury Rise, East Haddon)

The course is written by Robert Warren and Kate Bruce and published by Church House Publishing

## **SERVICES FOR ST ANDREW'S CHURCH WHILTON FEBRUARY 2008**

<b>3<sup>RD</sup></b>	<b>10.00 AM</b>	<b>BENEFICE SUNG EUCHARIST AT <u>WHILTON</u></b>
<b>10<sup>TH</sup></b>	<b>11.00 AM</b>	<b>FAMILY SERVICE</b>
<b>17<sup>TH</sup></b>	<b>9.15 AM</b>	<b>HOLY COMMUNION</b>
<b>24<sup>TH</sup></b>	<b>11.00 AM</b>	<b>FAMILY SERVICE</b>

### **MARCH 2008**

<b>2<sup>ND</sup></b>	<b>11.00 AM</b>	<b>MOTHERING SUNDAY FAMILY SERVICE</b>
<b>7<sup>TH</sup></b>	<b>7.30 PM</b>	<b>SPECIAL ECUMENICAL SERVICE - WOMEN'S WORLD DAY OF PRAYER</b>
<b>9<sup>TH</sup></b>	<b>11.00 AM</b>	<b>FAMILY SERVICE</b>
<b>16<sup>TH</sup></b>	<b>10.00 AM</b>	<b>BENEFICE FAMILY EUCHARIST AT <u>HARLESTONE</u></b>
<b>20<sup>TH</sup></b>	<b>7.30 PM</b>	<b>HOLY COMMUNION -AND STRIPPING THE ALTAR</b>
<b>21<sup>ST</sup></b>	<b>7.30 PM</b>	<b>COMPLINE</b>
<b>23<sup>RD</sup></b>	<b>9.15 AM</b>	<b>FAMILY COMMUNION - EASTER DAY</b>
<b>30<sup>TH</sup></b>	<b>11.00 AM</b>	<b>HOLY COMMUNION</b>

## **CHURCH EVENTS**

### **Bring and Buy**

The fundraising committee has introduced a Bring and Buy table in the church for church funds. It will be manned before and after the services. We would very much appreciate donations for the table:

- Bric a brac, books
- Cakes, jams, preserves
- Unwanted presents
- Craft items
- Plants

If you would like unsold items to be returned to you then please put your phone number on donations. Any items remaining unsold after a reasonable period will be disposed of at the discretion of the fundraising committee.

Teresa Leadbetter (843988)

## **CAR BOOT**

**SUNDAY 20<sup>TH</sup> APRIL, 1.00 – 4.00 PM IN WADD CLOSE**

**CARS £6 – (£5 PRE-BOOKED) . VANS £10 – (£8 PRE-BOOKED)**

**BOOKINGS TO JANET BOWERS – 842851 OR LINDA TREACY – 842034**

**GATES OPEN AT 10.30 AM**

**REFRESHMENTS**

**EVENT IN AID OF ST ANDREW'S CHURCH**

### **Daffodil Day**

**Saturday 22<sup>nd</sup> March 2.00 – 4.00 pm**

Come and admire the daffodils in the churchyard and enjoy refreshments in the church.

There will be an Easter egg hunt and a decorating competition for children.

Raffle for which donations will be gratefully received.

Admission £1.00 per person.

Call Teresa on 843988 for details



## **ST ANDREW'S CHURCH FLOODLIGHTS**

Didn't the church look lovely over the Festive Season on the evenings when the church was floodlit?

Don't forget that for £10 you can still book to have the floodlights on for any special occasion during the year

**Please contact on Janet Bowers on 842851**

## Whilton Walkers

If you are interested in going for a regular walk of 1 – 5 miles and trying different routes (not all in and around Whilton) then call or e-mail me.



Teresa Leadbetter 843988  
whiltonwalks@tlc-uk.co.uk

## PETS' CORNER

**New Year New You**  
(or a day in the life of ....Me)

Happy new year, how are you? Well, that's quite enough about you so let's talk about my favourite subject. Me.

All this talk about *New Year New You!* On the basis that it's impossible to improve on perfection I won't be changing anything so I thought I would share my diet, fitness and beauty regime with you.

My day generally starts very early. Well before daylight I start preparing for breakfast with a little workout that is great for toning front legs and for keeping claws in trim. Try it with me – stand squarely on all fours on a piece of carpet, stretch out the front legs, extent the claws into the carpet as deep as they will go and pull. Repeat several times until you hear your name being shouted from the bedroom then repeat three more times and run to the kitchen. This exercise can in fact be repeated at any time of the day to attract human attention.

Now for the diet. In order to maintain a high standard and good variety of menu you may need to turn up your nose at the first dish offered. To be really effective you should practise putting on a hurt

expression – go on try it now. They may say, "...you wolfed this down yesterday" but persevere and eventually they'll open a tin of tuna. Yum.

Now, pay attention, grooming comes next. It just wouldn't do to wander around all day with bits of breakfast around my mouth and whiskers so this is where I start. A good lick of the paw and wipe along the mouth and repeat. There is an added bonus as you may find a stray morsel of food.

Sleep is the essential part of my beauty regime – no less than twenty hours a day to keep my kittenish good looks.

So there you have it, if you follow my regime I guarantee you'll see a change in yourself.



Lots of  
love,

Molly  
xx

## WHILTON VILLAGE HALL

It has recently been noticed that hirers of the village hall are not conforming to the Important Notice displayed in the kitchen.

We do not have a village hall caretaker and therefore it is expected that hirers will conform strictly to the rules and regulations. There are two particular points to mention; namely all food must be taken away from the premises at the end of the hire and not placed in either the pedal bin or the wheelie bin so as not to attract vermin. The other matter is that of drying-up cloths- recently we found a pile of at least six soiled cloths left in the kitchen. The Terms of Hire indicate that hirers must use their own tea cloths where appropriate or if the village hall property is used, they must be taken away to launder and returned promptly.

Hirer's cooperation would be appreciated.

Whilton Village Hall Management Committee

The Annual Meeting will take place on 20<sup>th</sup> February 2008 – All Welcome

## **WHILTON CAROL SINGERS**



**Whilton Carol Singers would like to thank everyone again for supporting them and giving so generously on Thursday 20<sup>th</sup> December 2007.**

**A total of £250 was collected. This year the money has been donated to Macmillan Cancer Support.**

**The Villages Committee" is pleased to announce they are to hold a  
*"Murder Mystery Evening" at 7.30pm on  
Friday 29th February at Harlestone Village Institute.***

**All villagers are welcome to come along and join in the fun and no prior experience is required.**

**The details of the "plot" and the individual characters will be revealed in February 2008.**

**Tickets are £20 each and include a 3 course dinner and a drink upon arrival. However, please bring your own wines for the dinner. Table plans will be co-ordinated by your hosts for the Murder Mystery."**

**Information and tickets will be available from:**

**Jo Grant – Whilton, on email:- joanne@grant91.wanadoo.co.uk**

## **Easter Egg Hunt**

**Saturday 22nd March - 11.30pm**

**St Mary's Church, Great Brington**

**in aid of the Brington and Whilton pre-school  
with refreshments and crafts**

**11.30pm-12noon Songs and Stories for Easter**

**at St Mary's, Great Brington**

**ALL WELCOME**



## **NEIGHBOURHOOD WATCH**



The Northamptonshire West Police have requested that we be aware of a white Ford Transit Van recently stolen from Anglian Water although it may not be marked in Anglian Water Livery. A separate theft of Anglian Water uniforms also occurred recently.

Be on your guard and do not allow anyone to enter your home unless you are completely satisfied who they are. The following steps are advised:

- \* Make sure your doors and windows are locked at all times.
- \* Do not open the door, even if the caller has a uniform on.
- \* If possible speak to the caller from an upstairs window.
- \* Ask them for their name and where they are from.
- \* Call Anglian Water to check they are legitimate on **O800 145 145**.
- \* If you are still in any doubt, please contact Northamptonshire Police on **08453 700 700** or dial **999** in an emergency.

A further scam has also been notified about a full British Gas Uniform which has been stolen from a vehicle in Manchester. The uniform was a large size and also stolen was a leather folder with the British Gas Logo on it containing details of slides and products. Whilst it is appreciated that we do not have gas to the village, that does not necessarily mean we could not be targeted.

Neighbourhood Watch Deputy Coordinator

## SUMMARY OF EVENTS

Sun	3 <sup>rd</sup>	Feb		Photographic Club Outing to Welney Wildfowl Trust
Wed	6 <sup>th</sup>	Feb	7.30 pm	WGA -in village hall – Gardening Quiz
Fri	8 <sup>th</sup>	Feb	6.00 pm	Bingo at Brington School
Tues	12 <sup>th</sup>	Feb	8.00 pm	WPC in Village Hall – Using your PC to improve your photos
Tues	19 <sup>th</sup>	Feb	9.15 am	Library Van in village outside The Old Plough
Weds	20 <sup>th</sup>	Feb	7.30 pm	Whilton Village Hall AGM
Sun	25 <sup>th</sup>	Feb		WPC Outing to NEC Solihull - Focusing on Imaging Exhibition.
Fri	29 <sup>th</sup>	Feb	7.30 pm	Murder Mystery Evening in Harlestone Village Institute
Sun	2 <sup>nd</sup>	Mar	11.00 am	Mothering Sunday Service in St Andrew's Church
Mon	3 <sup>rd</sup>	Mar	8.00 pm	Whilton Parish Council Meeting in village hall
Tues	11 <sup>th</sup>	Mar	9.15 am 8.00 pm	Library Van in village outside The Old Plough WPC in Village Hall – Talk – Photographing people
Wed	19 <sup>th</sup>	Mar		<b><u>Newsletter Deadline for APRIL</u> Please hand in your contribution well before this date or otherwise we cannot guarantee it will be included in the next edition</b>
Sat	22 <sup>nd</sup>	Mar	11.30 am 2.00 pm	B & W Pre-School Easter Egg Hunt in St Mary's Gt Brington Daffodil Day Easter Egg Hunt at St Andrew's, Whilton
Sun	23 <sup>rd</sup>	Mar	9.15 am	Easter Day Family Communion in St Andrew's Church

The Whilton Newsletter is published bi-monthly and circulated free to every household within the Parish boundary. The costs are met by the Parish Council. The Editors are:

**Derek & Shirley Brown - Cherry Orton, Main Street. - 01327 842968**  
**E-mail – [shirdek@btopenworld.com](mailto:shirdek@btopenworld.com)**

We are always pleased to receive additional contributions from people who do not normally have an input, especially children and now also PETS – Poor Molly is working on her own, can anyone help her?

Please supply a disk with your contribution if not emailed so that we can manipulate the text to fit if necessary. If you do not have a PC or typewriter the editors will type the articles as we have always done in the past.

Articles of local interest, poems, recipes, puzzles or drawings will always be considered for inclusion in the Newsletter.