

# WHILTON NEWSLETTER

JUNE 2003



*Chris Wheeler*

## NEWS FROM ALL AROUND THE PARISH

*In this issue:*  
*Flower Festival & Open Gardens*  
*Church Display Nursery Rhymes*  
*Reports from Organisations*  
*Details of future events*



## ***Life on a Scarecrow's Pole!***

1. In spring I stand in sun,  
And maybe a spot of rain,  
Don't even mention crows,  
Oh, they are a pain!

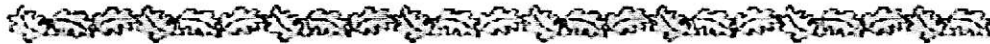
4. In winter I caught a chill,  
I'm as cold as an ice age.  
I still will do my duty, though...  
Protecting all the sage.

2. In summer it's really hot,  
It's also very stuffy,  
Chicks are learning to fly  
Ah, they look so fluffy.

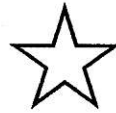
5. So next time you think, eah,  
it's easy being a scarecrow"...  
Invite me in for dinner.  
Come on, now, off we go!

3. I'm very tired in autumn,  
I also have a chip...  
Where a big bird bit me,  
Right across my hip.

By Alex Wheeler.



### **Ye-ha! New Deputy in town!**



Many congratulations on your well deserved, recent appointment as a Deputy District Judge, Michael. We're all very proud of you.

Our love and best wishes are with you for the future.

From your "partners in crime",

Kim, Chris, Alex & Alan Wheeler, Margaret & Roy Osborne.

xxx

The Editors are very grateful for the front cover drawing from Chris Wheeler and the amusing poem from Alex. We also send our congratulations to Michael

Saturday 21<sup>st</sup> June 2003

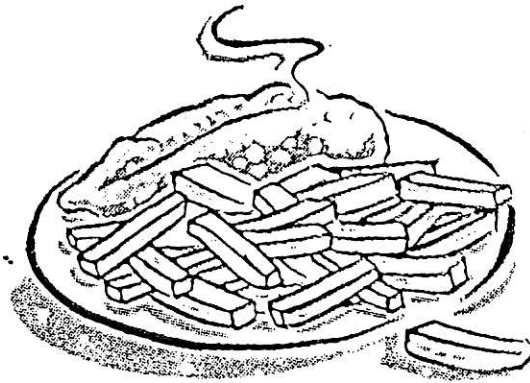
## VILLAGE TREASURE HUNT

at 5.30 p.m.

followed by a

## FISH AND CHIP SUPPER

at 7.30 p.m.



**Adults :     £5   Please bring your own drink**

**Children :   £3   Soft drink included.**

**Young children must be accompanied by an adult on the Treasure Hunt.**

**Tickets must be purchased in advance and will be available from 3<sup>rd</sup> until 17<sup>th</sup> June from:**

**Janet Bowers**

**Shirley Brown**

**Anthea Hiscock**

**Mike Lewis**

**If the weather is very poor, the Treasure Hunt will be replaced with a Beetle Drive.**

**All proceeds to Whilton Village Hall**

## PARISH MATTERS:

The Annual Parish Meeting was held on 12<sup>th</sup> May. All the Council Members made it including our newly co-opted member for the Locks, Penny Price. We were joined by Cllr Mrs Amos and 6 members of the public, which was some encouragement (not a lot mind). We heard from the Reports of another successful year thanks very much to a small band of committed parishioners but also of some wider participation in special events for the Jubilee, the village hall, Spinney and annual litter pick. All contribute to the enjoyment of living in this particular parish.

- 1 Minutes of Meeting held on 13<sup>th</sup> May 2002 were approved and signed. They will be pasted into the minute book this and in future years in place of handwritten records.
- 2 **The Report of Chairman of the Parish Council for the Year 2002-3 was presented by Cllr. Mike Lewis.** It had been a relatively quiet year yet one in which a number of new regulations and practice for Parish Councils had been introduced. These had included the adoption of a code of Conduct and Register of Members' Interests as well as a new Audit process.

In planning terms, while there had been relatively few and minor planning applications for the Parish, with the exception of the welcomed refurbishment of the Locks Garden Centre, there had been a number of particular wider concerns. The new County Structure Plan looked far more to emphasise the importance of larger conurbations- Northampton, Milton Keynes, Banbury, and Rugby at possible cost to the importance of Daventry District Council and our Parish within it. Objections to the proposals for the Rugby Airport and Danetree Village had been made but no outcomes were yet available. The latest suggestion for the modernisation of Long Buckby Station, paid for by a housing development around it, had had a mixed reception, however we continued to support the preservation and improvement of services from the station and had joined the Rail Users Association.

Within the Parish itself the Council had began action on a list of 16 improvements in part derived from a new institution of an annual village walk by the Councillors which was to be extended to the Locks in future years. The possible registration of the village green was being pursued again as part of this. The Council had just failed to be amongst the winners in the best kept village competition this past year but would be trying again. The Council was grateful for the assistance it received from Roy Haynes and helpers with the village Churchyard, and to Max Middleton for maintenance of the Village seats. In fact there were a number of unsung heroes, who contribute to the life of the village as in regular committees and the Jubilee Celebrations, to whom the Chairman's thanks were due for what had been another successful year including fellow Councillors and Clerk.



- 3 The Annual Financial Statement of the Parish Council** was submitted to the meeting for approval by the Clerk, having been displayed on the Parish notice boards for the required three weeks.

This was done in the new format. Receipts were just under a £100 more at £3879 and expenditure just over £200 less at £3446. Total assets were now £6316, some £550 more than last year. This was due to the Horace Clements Bequest of £300 and the unexpected return of £211 from the Jubilee Committee of their initial grant of £250 because of their successful covering of their outlay in the exceptionally successful Barn Dance and Party Celebrations. The VAT reclaim for the previous 3 years had also added £255. A new village light had been installed in the remaining dark area of the main Street at £362 and £400 given to the Spinney Committee to enable the Duck boarding for all weather use. Three sets of Audit fees explained the rise in Administration, which also caused higher expenses for the clerk, which involved 2 journeys to see one of them. A stand still precept had been asked for this year of £3000 although the level of reserves would be considered in setting next years. The meeting then approved the Accounts.
- 4 The Report of the Parochial Charities was presented by the Clerk as the Parish Council nominated Trustee.** This report is reproduced in the magazine. He reported another unsuccessful year in attracting any applications. The fall in the stock market had also reduced the assets of the Charity by some £750. This was despite the attempts to widen the definition of poor and publicise this more widely to outside organisations. Parishioners are urged to consider who might benefit and could discuss on a what if basis with the trustees. Assets are now £4749 and income last year was £156.
- 5 The Report of Primary School Governors** was supplied to the meeting by Paul Mitchell, one of the Governors. A new Ofsted Inspection has reported good progress since the last one in 1997. Standards had risen steadily to be clearly above average. Teachers were careful to ensure that they set work that matched the wide range of age and ability within each class. The children's behaviour was very good, being polite to each other as well as adults. The inspector concluded it was a jolly good little school which promoted a love of learning. The meeting was pleased to hear of this excellent report. A question was raised about current numbers on roll, seen as critical in last year's report for which the clerk will seek an answer.
- 6 The Report of Village Hall Committee was given by Mr Lewis its Chairman.** Finances remained sound through the efforts of the organisers of the 200 Club. Without that help income would not cover outgoings. Renovation of the Toilets to include proper provision for disabled people it was hoped would be concluded this year but building layout and playgroup standards were difficult to match with this requirement. New activities had been held this year including the WI Fair Trade Dinner and the two plays, but these had had mixed results. A list of possible future activities was kept and people were urged to make suggestions and make maximum use of this excellent facility. Suggestions were made in the meeting that new taps and a small refrigerator be explored for the kitchen and locks put on the toilet doors.

7 **Reports from District and County Councillors** was made by Cllr Mrs Amos as her husband was at different meetings during the evening. In respect to NCC Mr Amos voiced his concern about the new Milton Keynes Expansion plan for 160000 new houses which could involve 13000 in the Daventry area. He was watching for the outcome of the proposal around Long Buckby Railway Station and hoped the recent decision about runways expansion at the 3 London Airports would mean an end to the Rugby Plan. He had opposed the large rise in Council Tax and regretted the withdrawal of the Area Committee Grant Budget for this year.

Cllr Mrs Amos reported that she was now coming to the close of her year as DDC Chairman. She was to move to Strategy, Tourism and Rural Development Committee. ( She recommended the new 52 Mile Brixworth- Salcey Forest Round Walk that had just been completed and opened.) She regretted the delay over decisions on Danetree Village or the alternative reservoir area proposal through the Structure Plan objection and the temporary restriction on waste in the brown bins, both of which she expected to be resolved soon. Although the Council was once more on an even financial base she resented the loss of the Social housing grant and surplus housing sale monies taken from DCC for other Councils. Both her husband and herself were of course pleased to hear from parishioners of any concerns with the Councils.

8 **Report from the Neighbourhood Watch Co-ordinator.**

Phil Waights presented his report to the meeting. He was pleased to report that there had been no incidents within the village during the year although there had been at the Locks and in adjoining villages. He was kept informed of what was going on by E mail from the Community Beat Officer and was waiting to see the effect of the appointment of 3 Community Support Officers to the Daventry area. They are to deal in particular with nuisance and youth problems. Although he questioned whether he had found the right balance in giving the village information, the meeting was most appreciative of his notices on the Notice Board and inserts in the Newsletter, and supported his limited use of the cascade system to emergencies. Mr Lewis informed the meeting that there was now a Watch formed from Lock 13 to the New Inn which would eventually stretch to the Long Buckby one.

9 **Report from the Management Committee on the progress of the Whilton Spinney Project:** Mr Brown presented his report on a satisfactory fifth year in the Spinney. Despite the £1277 cost, the Duck Boarding put in by BTCV volunteers had been a great help in managing the increase in water level following the removal of the poplars. 33 new trees had so far been sponsored for £5 and planted with the plan of doing more this year in this way. A start had been made by Derek Coates on making furniture from natural wood there, while water loving wild flowers continued to proliferate and be recorded in the monthly survey along side more birdlife and insects. Pond Clearing and Ditching continued to occupy the dedicated small band who help most weeks and it is hoped the very successful Easter Egg Hunt where over 50 came will encourage more to be physically involved as well as make positive developmental suggestions.

**10 Any Other Business:** There is a risk of losing your attention in continuing but as in other years some important matters were brought to the Parish Council attention through the meeting and contact with individual Councillors.

i.) Concern over the implications of the opening of Manor Farm each weekend for the residents of Manor Lane and in terms of traffic the rest of the village was raised. The Parish Council had not been consulted either but the Chairman was now in touch with the Planning Authority to be fully appraised of what regulations existed to deal with unintended possible consequences. As with Whilton Mill while the need for farmers to diversify was accepted and success applauded it needed to be in keeping with the needs of other residents.

ii.) A request was also made for the Council to ask the Mill to put a sign at the top of the hill on the main road making it clear where it was to stop a lot of drivers needlessly trying to find it in the village and asking for directions. It was suggested that such were the numbers now using that facility that a brown tourist sign might be available.

iii.) Finally it was again asked that the Council pursue the possibility of moving the 30mph signs further out of the village at its expense, given the NCC position from last year's request that it did not have a policy or funds at present to do this.

**Thus concludes the business of last year and the reports of extensive efforts of a number off parishioners to make this a very pleasant place in which to live. The next meeting will be on 17<sup>th</sup> May next year after the election of the new Parish Council.**

**The Annual Meeting of the Parish Council continued following the close of this meeting.** Brevity must be my watch word.

- The intention of registering the Green will be fully debated at the next meeting again as Beryl Williams has uncovered records of a decision in 1992 not to proceed apparently because of existing protections under Highway legislation at that time.
- The Council were pleased to accept a tender from Roy Haynes of £350 to replace the notice board on the green.
- It had also received notification of proposals for maintaining existing trains from Long Buckby but taking 10 minutes longer to get to London in the rush hour from 2004.
- Saxon Lifts had got planning permission with our suggested screening, and no comments had been received about the extension to 8 Langton Rise.
- Consultation was invited on Housing Strategy, affordable Housing, Transport Information and Local Transport Plan.
- The Council confirmed its acceptance of the Accounts for 2002-3 and agreed to retain NALC as its independent Auditor, although no longer necessary in Law.
- The maintained vacant allotment has been let leaving only the grassed over one at the top. If no one applies for this by next meeting the possibility of it becoming a Parish Orchard will be discussed.

## REPORT ON THE WHILTON PAROCHIAL CHARITIES 2002-3

Prepared for the Annual Parish Meeting on May 12<sup>th</sup> 2003

This has again not proved to be a year of progress in many respects. The value of the Charity's assets has decreased by over £750 because of continuing share price falls. There have been no applications for its funds from poor people in the Parish. This is despite the introduction of a fresh definition of being poor decided by the two trustees and published in the Newsletter.

In the absence of a Rector trustee, Ann Gilbert, the Community Trustee, and myself, as the Parish Council Trustee, met to decide how those in need in the parish could access the monies more easily. We made the following decisions:

- i) *The Trustees are prepared to give up to £750 in grants in sums not exceeding £250 and limited to one application per financial year.*
- ii) *These would be given on receipt of a written application in confidence, explaining the need and difficulty in financially meeting it, or if preferred, an interview with one of the trustees which they would record.*
- iii) *The need may be for a piece of equipment or experience that anyone with reasonable means could be expected to acquire. eg. A replacement mattress, TV licence, small house repair, musical instrument, evening class/skill giving course, playgroup fee, taxi fare to visit relative/friend in hospital, holiday break or significant school trip/D of E expedition that would fulfil potential.*
- iv) *Poverty is to be defined for an older or disabled person as living solely on a basic state pension or benefit, for a family living on an income half the national average wage, and for young people in their own right in a situation where it would not be expected a parent would fund the expense required. The payment may be requested to avoid consequences of a loan or the incurring of further debt.*

The Trustees have now written to the District Council, Health and Social Care Services, local surgeries, CAB and Welfare Rights to indicate to them the existence of this fund for anyone normally resident in the Parish Boundaries. In this letter we make the offer to discuss any 'What If' situation before any name is mentioned and this could equally apply in the parish. We will review this new approach at the close of the year and if necessary make changes to the above criteria or bring proposals for the winding up of the fund by transfer if it continues not to be used. It remains of real concern that the value of the asset continues to go down without it managing to assist even one individual.

Meanwhile we welcome the Rev. Chris Goble as the third trustee. We invite anyone to discuss any potential situation with any one of us, and would urge you to mention the possibility to those who should benefit from the forethought of previous wealthier generous parishioners. Any observations or further suggestions for getting help to the right people would be welcome.

<b>Accounts:</b>	<u><b>2002-3</b></u>	<u><b>2001-2</b></u>
Income from Coif Shares	£151.47	£151-39
Interest from Bank Account	£4.96	£1-04
Total Bank Balance 30.4.03	<b>£1213.17</b>	£1056-74
Capital Account Share Value	<b>£1133.32</b>	£1432-15 as at 31.12.02
Subsequent Share Purchases	<b>£2402.11</b>	£3035-50
<b>Total Value of Trust Assets</b>	<b>£4748.60</b>	£5524-39      K.Hiscock



**Enrol Today!**

# **FREE**

## **COMPUTER TRAINING**

- ✓ Start your course at any time
- ✓ Flexible session times
- ✓ Friendly tutors
- ✓ New e-Quals courses
- ✓ Free training \*
- ✓ Free City & Guilds  
Certificates
- ✓ All adults welcome



**WIN A  
COMPUTER!**

Free entry to prize  
draw when you  
achieve a full  
City & Guilds  
Certificate

**New e-Quals modules,  
choose from:  
Internet**

**Desktop Publishing  
Presentation Graphics**

**Word-Processing**

**Spreadsheets**

**Database**

**E-mail**

Call us now to reserve your place:

**Tel: 01327 843942**

**Rugby College Learning Shop**

**- Long Buckby**

**1st Floor, 11a High Street**

**Long Buckby**

**Northants NN6 7RE**

Opening hours:

Mon-Thurs: 9am-9pm, Fri-Sat: 9am-5pm



**Warwickshire  
COLLEGE**

ROYAL LEAMINGTON SPA & MORETON MORRELL

Rugby College is due to merge with Warwickshire College. From 1st August 2003, Warwickshire College courses will operate from the Leamington Spa, Rugby and Moreton Morrell centres.

\* Students must be resident in the UK for 3 years or more



## ROUGHMOOR SPINNEY



After one or two aborted attempts, an Open Day and Easter Egg Hunt took place on Sunday 27<sup>th</sup> April 2003. This was very successful with over 50 people attending; light Easter-type refreshments were served after the egg hunt. See separate page of photographs taken at this event.

Although rather late, the spinney was declared open with its new official name "Roughmoor Spinney" and the cutting of the ribbon was performed by the youngest member attending (George Meadows aged 3). Unfortunately Mr & Mrs Griff Davies were unable to attend to perform this duty.

It is gratifying to learn that a number of the residents of the parish do visit the spinney and it is only in general conversation that this comes to light. The Management Team would appreciate any feedback and suggestions as to the development of the spinney as we have so often said; the spinney was given to the people of Whilton Parish for their involvement and peaceful enjoyment.

We have a small dedicated team, on average four workers, one of whom lives outside the parish, although his mother is a resident – Roy Haynes interest and help is invaluable. We would certainly appreciate more parishioners showing an interest and assisting physically with the work in the spinney.

The 33 trees planted this year have all been sponsored and we are extremely grateful for the interest taken. We have recently been given eight oak

trees by Rupert Gardner and these have now all been planted. Maddie Haynes (Trudy Haynes granddaughter) has grown a horse chestnut tree (from a conker) which stands approximately four feet high and this has recently been planted in the spinney, following in her father's footsteps as the horse chestnut on the public footpath in the spinney was planted by Clive Haynes many years ago.

The next main planting of trees will take place in the autumn and we already have indication from various people that they would like to be involved in sponsoring a tree then.

Unfortunately we find it necessary to mention that certain items of work that have been carried out have been interfered with and also the noticeboard which cost over £1000 has been used for target practice. A number of wood and mud darts were found stuck to the board header and it was otherwise extensively covered in mud. These actions are totally unnecessary and we would ask those involved in such activities to have a thought for the small team attempting to create a valuable asset for the benefit of the residents of Whilton Parish. Perhaps their energies could be directed in helping with the development work.

One of our team has placed some interesting information on the board about plants in the spinney which had been partially obliterated by mud on the glass.

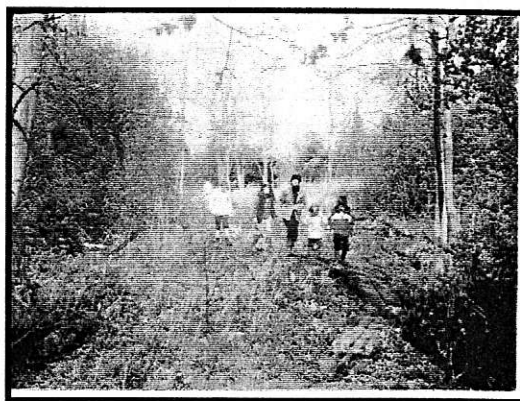
Management Committee



# **GRAND OPENING OF ROUGHMOOR SPINNEY AND EASTER EGG HUNT**



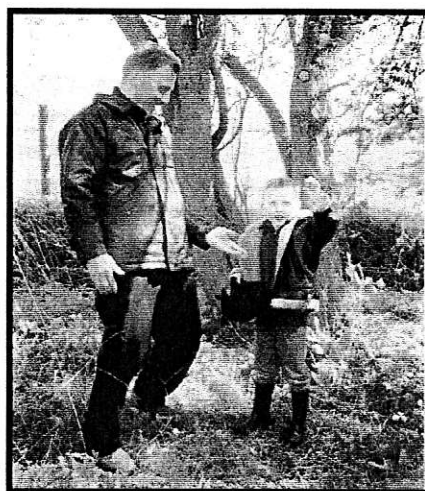
**Awaiting the Official Opening**



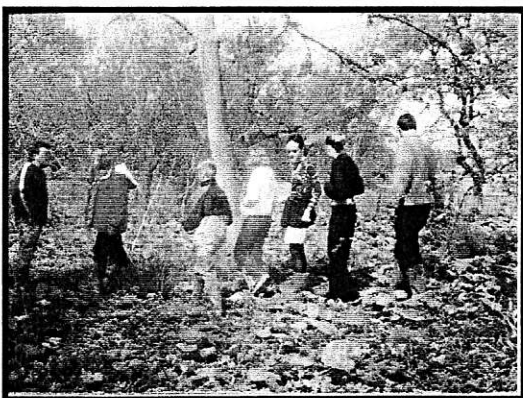
**Searching along the boardwalk**



**We'll soon be off, just the ribbon to be cut.**



**Look, I've found an egg!!**



**Searching for the eggs**



**Welcome refreshments after the hunt**

## APRIL MEETING WHILTON W1

We met in the village hall at 7.30 pm on April 9<sup>th</sup> and, as we found ourselves again with no speaker, we had planned an Easter egg making evening. We were joined by two visitors.

There was a delicious smell of chocolate in the hall as it was being melted to put on to moulds of all sizes. At the same time Ros Gardner demonstrated paper folding to make baskets for presenting the smaller eggs.

We had our business meeting and refreshments half-way through the evening (awaiting the setting of the chocolate for further decoration). We discussed the proposed Litter Pick for Thursday 24<sup>th</sup> April at 10.00 am, Diana, Frances and Trudy volunteered to provide refreshments in the village hall.

The Committee was pleased to announce that, as the Fair Trade Dinner had been so successful, we were able to send £100 to the NCFWI's ACWW Project 2003 & 2004 to provide drinking water via a bore well and overhead tank for children suffering from polio at Ottanthangal, India.

## Keep Whilton Tidy!

### The Spring Litter Pick

On the sunny morning of Thursday 24<sup>th</sup> April you may have noticed a band of enthusiastic litter pickers wending their way up and down the village and along the main road. Later the group gathered at the Village Hall where refreshments were provided by members of the WI. The children who took part were presented with certificates to record their achievement for the community.

### The litter

This was the Annual Litter Pick, which ended with several black sacks full of rubbish which were collected by the District Council. Had there been more litter pickers we could probably have doubled the amount picked up along the main road, where car drivers apparently not only crash into each other, leaving parts of vehicles in the hedge, but also throw out large quantities of cigarette packets and fast food containers; someone had also added a canister of used fireworks.



### Responsibility for our own environment

This was the first year without the usual Operation Spring Clean publicity, which used to be organised by the Keep Britain Tidy group.

The funding has changed from now on and we do not receive reminders about keeping tidy. This means that we have to be more pro-active in our activities.

### The Summer Litter Pick

Those who took part and members of the WI agreed that although the main village is usually very well cared for by the residents, there is a need to clean up the approaches to the village. It was decided that another litter pick in the summer would be useful.

We have now acquired a pack for the next pick. This includes tabards which will have the message: Keep Whilton Tidy.

The WI will be organising the Summer Litter Pick probably in June or July. If you missed the last occasion, this gives you another chance to join in!

Please look out for details on the notice board. Every picker makes a difference. All ages are welcome, but of course young children must be accompanied by an adult as we shall be rubbish hunting along the road.

Anthea Hiscock, President Whilton WI

## **WHILTON WI MEETING WEDNESDAY 14<sup>TH</sup> MAY 2003**

***NINE MEMBERS ATTENDED THIS MEETING AND THERE WERE FOUR APOLOGIES. THE PURPOSE OF THE MEETING WAS TO DISCUSS THE THREE RESOLUTIONS WHICH WOULD BE VOTED ON AT THE ROYAL ALBERT HALL AT THE AGM ON 11<sup>TH</sup> JUNE 2003, THEY WOULD SUBSEQUENTLY BECOME THE NATIONAL WI POLICY.***

***The first – “ expressed concern at the increase of obesity and diet-related health problems in children and the associated risk of chronic disease in later life. It urges the government to regulate the promotion to children of foods that contribute to an unhealthy diet and to ensure increased opportunities for exercise and practical food education in schools.”***

All members were in agreement with this Resolution but felt that it tried to incorporate too much and could have been more cogently stated.

***The second – “ calls upon the government to concentrate it's efforts in promoting and strengthening modern Apprenticeship Schemes to provide skilled workers for the future.”***

Many members had personal experience of Apprenticeship Schemes, both now and in the past. There was a general agreement of the need to improve, not only the Apprenticeship Schemes, but also the opportunities for people both young and older to continue their education and training.

***The third – “calls upon the government to take urgent action to ensure that the necessary facilities and services are provided to enable older people, irrespective of their means, to spend their remaining years in comfort and dignity, whether this be in their own homes or in a Nursing or Residential home of their choice.”***

The members discussed the many problems evident in the present situation such as:-

- the closure of hundreds of private Residential and Nursing Homes due to new standards
- lack of adequate finance and difficulty in obtaining staff – bed blocking in general hospitals is the result.
- local authorities closing their own accommodation
- no uniformity between authorities in terms of provision of facilities and money available
- the fear of loss of home to leave to children as a result of having to pay for care

The discussions were lively and enjoyed by all. They had been presented very clearly by our Advisor, Mrs Meg Mayhew to whom our thanks are due.

***OTHER ITEMS DISCUSSED WERE THE ARRANGEMENTS FOR THE ANNUAL SUMMER DINNER AND THE AUTUMN COUNCIL MEETING. A VOTE OF THANKS WAS GIVEN BY DIANA SCOTT WHO ALSO WON THE RAFFLE. REFRESHMENTS WERE PROVIDED BY CHRIS MESSINGER AND JENNY PONDER. A VERY ENJOYABLE EVENING.***

**FRANCES DRAKE**

# CHURCH MATTERS

## APRIL WEDDING

Saturday 12<sup>th</sup> April and the first wedding at St Andrews for four years. A beautiful sunny spring day, the sound of bells and a full church welcomed Sarah Tibbs of South View for her marriage to Richard Long of Bristol. Sarah looked radiant and both she and Richard made a lovely couple as they left the church to be joined by families and friends for the photographs outside before leaving for the reception at Fawsley Hall.



We all wish Sarah and Richard a long and happy life together.



## CHURCHYARD

There have recently been a number of incidents of dog fouling in the churchyard and it was only the keen eyes of Roy Haynes who spotted some on the top of the banks on the same day of the above wedding and saved what could have been an embarrassing moment.

Please respect the churchyard and those who visit family graves. It is easy enough to carry a doggy dos bag in your pocket and then **CLEAN UP** after your pet.

Thank you. Janet Bowers, Churchwarden.

## SERVICES FOR ST ANDREW'S CHURCH WHILTON

### JUNE 2003

<b>1ST</b>	<b>10.00 AM</b>	<b>UNITED BENEFICE SUNG EUCHARIST AT BRINGTON</b>
<b>8TH</b>	<b>11.00 AM</b>	<b>FAMILY SERVICE</b>
<b>15TH</b>	<b>9.30 AM</b>	<b>SUNG EUCHARIST</b>
<b>22ND</b>	<b>11.00 AM</b>	<b>FAMILY SERVICE</b>
<b>29TH</b>	<b>6.00 PM</b>	<b>FLOWER FESTIVAL THANKSGIVING</b>

### JULY 2003

<b>6TH</b>	<b>10.00 AM</b>	<b>UNITED BENEFICE SUNG EUCHARIST AT NORTON</b>
<b>13TH</b>	<b>11.00 AM</b>	<b>FAMILY SERVICE</b>
<b>20TH</b>	<b>9.30 AM</b>	<b>SUNG EUCHARIST</b>
<b>27TH</b>	<b>6.00 PM</b>	<b>COMPLINE</b>

## FLOODLIGHTS

This facility is available for all celebrations or to remember a loved one or if you would just like to see the church floodlit. At a small cost the church can be floodlit for the evening making any occasion very special for you. - Contact Janet Bowers on 842851



# WHILTON PAROCHIAL CHURCH COUNCIL

The Annual Meeting was held on Thursday 24th April 2003 at 7.30pm in the Village Hall and it is disappointing to report that only the retiring members of the PCC attended. However the following is a brief résumé of the meeting.

## Vestry Meeting

**Election of Churchwardens (2).** There was only one nomination, Mrs Janet Bowers who was duly re-elected.

## Annual Parochial Church Meeting -

**Election of PCC Members (10)** – all previous members being willing to stand, were elect en bloc – Shirley Brown, Mary Emery, Eileen Finnemore, Jo Grant, Sue Townley, Derek Brown, Greg Lye and Phil Waights

**Election of Deanery Synod Representative** – Mr Phil Waights was duly elected

**Election of Sidespersons** – It was proposed and agreed that the present Sidespersons be elected en bloc.

**Election of Independent Examiner** – It was agreed that Mr Jon Brierley be asked if he was willing to continue.

**Electoral Roll** – Phil Waights reported that the new roll still stands at 20.

**Financial Affairs and Accounts** – The accounts which had been approved at the previous PCC Meeting and examined by Mr Jon Brierley were duly adopted.

## **PCC Meeting – Election of Officers**

Lay Chairperson	-	Mrs Janet Bowers
Secretary		Mrs Janet Bowers
Treasurer		Mr Derek Brown
Electoral Roll Officer		Mr Philip Waights

## **Standing Committee**

Mrs Janet Bowers and Mr Derek Brown

Derek Brown,PCC

## Copper Mile

A big hello to anyone still collecting those coppers and generously donating them to St Andrews Church Fund. Things have been rather quiet on the donation front this year so the mile is trickling rather than flowing along. We have received enough donations since the last report to add a further 41 yards to the mile which has left us tantalisingly close to the half way point at the Old School House. I can see that maybe a little incentive is required to speed things up. As the Flower Festival will shortly be upon us, anyone with coins to donate can bring them along on the day and have the opportunity to win a prize as well as donating their spare coppers to a very worthwhile cause. So don't delay, start collecting today and bring them along to the Flower Festival or donations can be left at the donation point in St Andrews or handed in to Gill or Janet at any convenient time. **Thank you for all donations received to date and hopefully we will be deluged with coppers (not rain) at the Festival.**

Gill Denbigh.

**CHRISTIAN AID COLLECTION -** The door-to-door collection around the village raised **£218.57** – Well done Whilton

## **CHURCH FLOWER FESTIVAL, VILLAGE OPEN GARDENS AND SCARECROW TRAIL**

**DATE – SUNDAY 29<sup>TH</sup> JUNE 2003**

**TIME – 1.00 PM – 5.00 PM**

This year's Flower Festival is based on the theme "Nursery Rhymes" (17 in all) with a Teddy Bears' Picnic in the ringing chamber and overall looks to be very colourful and interesting. As with last year's festival our junior members from church are doing floral arrangements (they really did some lovely displays in 2002).

Several village gardens will be open and after visiting them and perhaps feeling weary and footsore, why not enjoy a cup of tea and a slice of homemade cake in the garden of the "Little Rectory" (courtesy of Fiona and Alan Smith) if weather permits or in the village hall.

The Scarecrow Trail proved so popular last year it will be repeated. Now is the time to start planning your scarecrow to be displayed in your front garden or elsewhere on your property where it can be seen.

Other attractions will include a cake stall, plants, white elephant, books raffle and face painting. If you have any suggestions for other activities or can help in any way, please contact Janet Bowers (842851), Mary Emery (842741) or Jo Grant(844731).

**The Festival closes with a Special Festival Thanksgiving Service at 6.00 pm.**

The proceeds from the event will be divided as follows:

**Profit from the cake stall and teas** - Designated Fund for installing drainage and water to the church

**Profit from remainder** - St Andrew's Church General Fund.

### **From the Rector**

*Recently I have become fascinated by history, and this is partly born out of embarrassment. I was with some Koreans on Bonfire eve, and there were asking of the origins of that night. I struggled to tell them, which filled me with shame. There was a report recently in the newspapers that immigrants wanting to settle in this country should learn British history and culture. Instinctively I think that would put most of us to shame who would know less than they. Radio and TV programmes have sought to address this problem, and have done so quite successfully. The truth is that there has been a shift in history whereby people have become more of the focus than the general pattern. For instance you're more likely now to hear or read something about Oliver Cromwell than the English Civil War in general.*

*This is important. Learning where we have come from, and why things are as they are can be fascinating, but they can do something else. They can help prepare us to find out where next. Of course history never repeats itself exactly but reports from 400 years ago would have spoken of terrorism with religious, cultural and political motives, so little has changed. Our shared heritage can be something to be proud of, to respect and to lead on from. It can also be something that fills us with shame, and then we can try to put things right. Undoubtedly history will do both. This is central to discerning the future and making decisions. We must seek most of all to learn from our past.*

I work from Brington Rectory, 01604 770402, or E- Mail [chris@rectory.freeserve.co.uk](mailto:chris@rectory.freeserve.co.uk)

Rev. Chris Goble

April 2003



# WHILTON

## Village of the Year 2003???

Once again the Parish Council has entered the village of Whilton in the Village of the Year competition. This is run by Northamptonshire ACRE and sponsored by Calor.

We have entered three parts of the competition:

- 1. The best kept village*
- 2. The most active village community*
- 3. The best kept churchyard*

Everyone in the village can help to support our entry in some way.

Things we can do:

- *leave no litter*
- *pick up and remove other people's litter, especially after the bins have been emptied!*
- *support the Summer Litter Pick*
- *look after our gardens*
- *take part in the hanging basket competition*
- *respect local wildlife, both plants and animals*
- *read information on the notice board*
- *take part in regular activities of the village organisations e.g. Gardeners Association, WI, Spinney work parties. ...*
- *join in special events organised this summer e.g. the Treasure Hunt, the Scarecrow Trail, the Flower Festival*
- *welcome anyone who comes to live in the village*
- *encourage children and young people to join in village activities*
- *offer lifts to those without transport*
- *consider active ways of improving village life*

**GOOD LUCK WHILTON!**

## **Guide Dogs for the Blind -Puppy Walkers Update**

As many of you may know by now, Penny our current Puppy who I have been 'walking' for the last 9 months has been rejected by the Guide Dog Association. She did not make it because she is too easily distracted by both people and other dogs. As some of you will have witnessed during my walks through the village ! We were given the choice as to whether to keep her or pass her onto another family and we have decided to keep her. She is a lovely dog, very lively, full of character. I must admit she hasn't been easy to train but she is getting better and we love her to bits.

Major, our last dog who was a cream Labrador has just qualified as a Guide Dog. He is living and working with a 40 year old Welshman in Tredegar, South Wales, which has really pleased Kerry who is also from South Wales.

I am just waiting for the photograph of Major with his new owner to arrive. Major went from Leamington where he completed his basic training to Cardiff for his advanced training, where he was a star pupil and reportedly one of the best they have ever had.

I hope to resume puppy walking again once Penny has been spayed and matured a little.

### **Watch this space**

Until Major's picture arrives, here is one taken the day before he left for training.



Jean Davies  
3 Langton Rise.

# WHILTON VILLAGE HALL 200 CLUB

## MARCH 2003

<i>1st Prize</i>	<i>034</i>	<i>Joan Davies</i>	<i>£40</i>
<i>2nd Prize</i>	<i>015</i>	<i>C Battison</i>	<i>£20</i>
<i>3rd Prize</i>	<i>133</i>	<i>D Brown</i>	<i>£10</i>

## APRIL 2003

<i>1st Prize</i>	<i>159</i>	<i>M Kane</i>	<i>£40</i>
<i>2nd Prize</i>	<i>117</i>	<i>C Fisher</i>	<i>£20</i>
<i>3rd Prize</i>	<i>093</i>	<i>C Print</i>	<i>£10</i>

### CONGRATULATIONS TO ALL THE WINNERS



## NEIGHBOURHOOD WATCH



Thankfully there have been no incidents to report in the village since the last newsletter.

The police are warning that cowboy "tarmacers" are active in the area. They say they have tarmac left over from a local job which will go to waste if they do not use it so they can do the job at a knock down price. If you agree they do the job (but to a poor standard) and then demand a very much larger payment than they quoted and can get very aggressive when they are refused. It is inadvisable to take their offer.

Distraction burglaries and thieving from outbuildings is continuing. The thief specialising in stealing tack is once again out of jail

Philip Waights.  
Neighbourhood Watch Co-ordinator.

## EAST MIDLANDS IN BLOOM

It is coming to that time of the year and the village has again entered in this competition. Judging will take place on 4th July, in the morning, with the judges looking for a neat and tidy village, mown verges, colourful floral displays in front gardens, hanging baskets, tubs, planters and window boxes.

Last year we were unplaced, the first time for some years, so can we make an extra effort to get back amongst the prize-winners? At the same time we will be improving our environment: - surely a worthwhile cause.



# WHILTON GARDENERS' ASSOCIATION

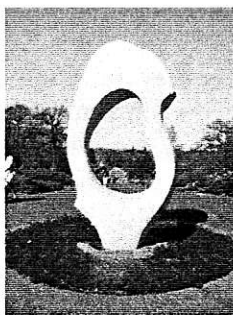
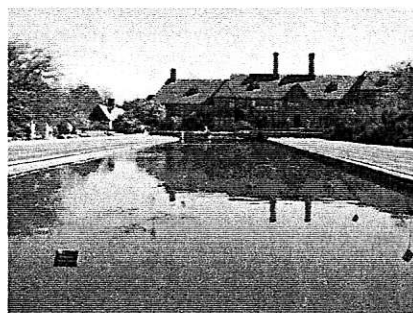


## Trees, Trips and Teeth!

It has been a very active time for the WGA over the last few months; here are the highlights.

### WISLEY OUTING

On Saturday 5<sup>th</sup> April a number of members of the WGA joined with the Brington Gardening Club to visit the Royal Horticultural Society's splendid gardens at Wisley. The weather was excellent for the time of year and the spring flowers were starting to bloom. Wisley's grounds contain water features, a large arboretum, a vegetable garden, hot houses and wonderful flower borders.



Wisley also has a range of small gardens which demonstrate how those of us with smaller gardens can still create a really exciting outside room; just right for those balmy summer evenings.

No day out could be complete without a fine lunch and a trip to the shops (and garden centre). Thankfully everyone managed to drag themselves away from the delights of the garden centre in time for the coach trip home.

### THE BEAUTY OF TREES

Brian Webster was our guest speaker in April with a talk entitled "The Beauty of Trees". Brian's fascination with trees, coupled with lots of excellent slides, ensured we had a thoroughly engaging evening. We learned why leaves turned red and gold in the autumn; who introduced the Monkey Puzzle Tree to this country (did you know that every one of these trees that you see in this country can trace its ancestry back to a handle of seeds brought over from Chile?) and how the flowers of the Hawthorn tree can be used to make wine.

### VISIT TO EVENLEY

The village of Evenley in Oxfordshire is home to the 2 acre garden of Janet and Bob Copley. Our visit on the 19<sup>th</sup> May, allowed 17 WGA members to enjoy a beautiful garden and to learn from a master plantswoman. Janet was not only free with her knowledge and advice, but was also happy to dig up seedlings straight out of the ground for us to take away and plant in our own gardens. Janet is a regular speaker for the WGA and we look forward to welcoming her back soon.



## CHEESE AND WINE EVENING

Probably the stand out event of the year so far for many of us. Although the wet weather prevented us from enjoying the garden at Cottam, the 40 WGA members and friends had a thoroughly enjoyable evening on Friday 16<sup>th</sup> May. We all enjoyed it so much that we even forgot to watch Gardeners' World, but we will always remember those teeth! Hopefully another social evening will be held before the end of the year.



## Coming Soon...

### Next Meeting

Our next meeting will be on **Monday 2<sup>nd</sup> June at 7.30pm in Whilton Village Hall**. The speaker for the evening will be John Beckwith and he will be talking about **'Advanced Colour in the Border**.

### Outings

The WGA will be visiting the **'Mill Gardens'** in Warwick on Saturday 21<sup>st</sup> June. We will be leaving from Whilton village green at 9.30. Admission fee is £1.00 and it is a self-drive event – although a number of us will be taking our own cars.

New members are always welcome, whether you are an expert or a complete novice – so come along to our next meeting and join in.

**Christine Phillips**  
Secretary



## LATE NEWS



### NEIGHBOURHOOD WATCH



Subsequent to drafting my first report for the Newsletter I regret to say that I have to report a burglary at South View on **Saturday 24<sup>th</sup> May**. Three white men entered the house and stole money. The police believe they came in a light coloured hatchback which they left parked in the gateway opposite the first new house as you enter the village from Daventry between 22.00 hrs and 22.25hrs. It is believed to have left the village without lights.

Would anyone who saw anything that night please ring **Sgt. Blason** on **01327 303128**. If there is no reply please leave a message.

This must have been a frightening experience for the occupant and anything one can do to help the police would I am sure be appreciated.

Phil Waights

**LIBRARY SERVICE:** - THE COUNTY LIBRARY VAN CALLS IN THE VILLAGE EVERY OTHER TUESDAY AT APPROXIMATELY 9.10 AM TO 9.30 AM. THE JUNE DATES ARE 3<sup>RD</sup> AND 17<sup>TH</sup> AND THE JULY DATES ARE 1<sup>ST</sup>, 15<sup>TH</sup> AND 29<sup>TH</sup>.





SUMMER



FAIR



Saturday 21<sup>st</sup> June 3.00-5.00 p.m.

**B  
R  
I  
N  
G  
T  
O  
N  
S  
C  
H  
O  
O  
L**



Summer

fair

Tombola - Raffle - Teas - Cakes - Toys  
Crafts - Books - Plants - Barbecue  
.....and so much more!!

by Mike  
Grant



## Summary of Events

Mon	2nd	June	7.30 pm	WGA Meeting in village hall
Tues	3rd	June	9.10 am	Library van in village
Sun	8th	June	2.00 pm	Spinney Working Party
Wed	11th	June	7.30 pm	WI Meeting in Village Hall – Neighbourhood Watch –
Tues	17th	June	9.10 am	Library van in village
Sat	21st	June	9.30 am	WGA Outing to Mill Gardens, Warwick
			3.00 pm	Brington School Summer Fair
			5.30 pm	V.Hall Treasure Hunt & Fish & Chip Supper
Sun	28th	June	1.00 pm	Flower Festival/ Open Gardens / Scarecrow Trail
			6.00 pm	Flower Festival Thanksgiving Service – St Andrews
Tues	1st	July	9.10 am	Library van in village
Mon	7th	July	8.00 pm	Parish Council Meeting in Village Hall
Fri	4th	July	a.m.	Judging of East Midlands in bloom

**Tues 8th July Newsletter Deadline - Please hand in your contributions by this date, at the very latest, preferably well before or otherwise we cannot guarantee they will be included in the next edition. Due to school holidays we need to have articles very promptly for this Newsletter.**

Wed	9th	July	7.30pm	WI Annual Dinner at Peggottys
Tues	15th	July	9.10 am	Library van in village
Tues	29th	July	9.10 am	Library van in village

The Whilton Newsletter is published bi-monthly and circulated free to every household within the Parish boundary. The costs are met by the Parish Council. The Editors are:

Derek & Shirley Brown - Cherry Orton, Main Street. - 01327 842968  
*E-mail – shirdek@btopenworld.com*

Sara Meadows - Courtyard Barns, Manor Lane – 01327 844211  
*E-mail – saraspicer@lineone.net*

We are always pleased to receive additional contributions from people who do not normally have an input, especially children (we are particularly pleased this time to have had input from Chris & Alex Wheeler and Alice Grant.) Please supply a disk with your contribution if possible so that we can manipulate the text to fit if necessary. If you do not have a PC or typewriter the editors will type the articles as we have always done in the past.

Articles of local interest, poems, recipés, puzzles or drawings will always be considered for inclusion in the Newsletter.

Any contributions to the newsletter  
**by the deadline date, please** to any of the above Editors.