

# WHILTON NEWSLETTER



*The pre-school children  
off to the Spinney*

**June-August**  
**Summer 2016**

## *Letter from the Editors*

*Summer 2016*

*As June arrives, many of us are thinking about celebrating the 90<sup>th</sup> birthday of Her Majesty, the Queen, who is now our longest reigning monarch.*



*The children at Harlestone and Brington Schools have already celebrated this special anniversary, as the Queen was born on 21<sup>st</sup> April, 1926.*

*The official birthday, however, is being celebrated over the weekend of 11<sup>th</sup> and 12<sup>th</sup> June. On Saturday 11th June, Whilton bells will be ringing out and there will be afternoon tea in the church, to which all are invited.*

*With this in mind we have included pictures of some of the residents of Whilton village in 1926. They would have read in their newspapers that the Duke and Duchess of York had had a baby daughter. On the theme of royalty, you will also find in this issue the record of a recent visit to Buckingham Palace by one of our parishioners, who met Her Royal Highness the Princess Royal.*

*Once again we have included some messages of thanks to parishioners who help the community in a variety of ways.*

*We hope this issue will inform and enable you to take part in some of the activities planned for the coming summer. If you would like to contribute to the next issue or have news to share, do let us know.*

*The Editors*

*Please note:*

*Our next issue will cover the autumn. As we shall be preparing this in the holiday month of August, it will be very helpful if our contributors could let us have their articles a little earlier, by 10<sup>th</sup> August. Thank you.*

## **News from the Parish Clerk**

The new Parish Council is now in place for the next four years, and I am hoping you have seen the excellent leaflet which was distributed, giving details of the new Councillors.

Randal Smith is the new Chairman, with Jane Melling taking on the role of Vice Chairman.

We have one councillor remaining from the previous term, Jonathan Hanslip, along with Keith Hiscock and Mark Thomas, with Ann Gilbert and Adrian Lee representing Whilton Locks.

Various projects will be taking place over the next four years, but as a starting point following the first meeting of the new enthusiastic Parish Council, they will be continuing to address the speeding issues through the village, and hopefully getting a reduction to 20mph, along with the road through Whilton Locks being reduced from a 60mph to 30mph. The Whilton Locks request is already progressing, and has been deferred to NCC Speed Review Panel and we await the outcome of the discussions.

Negotiations involving NCC Highways and Brington Parish Council will be taking place with regards to the condition of Brington Lane, and hopefully the addressing of the signage issues for HGV's at either end of the road.

The new lease has been agreed with DDC for the Allotment Gardens and I still have vacant allotments, should anyone like to take one on.

Sue Porter - Whilton Parish Clerk

\*\*\*\*\*

### **THANK YOU**

The editors would like to take this opportunity to thank the councillors who have served the parish over the last few years.

We would particularly draw readers' attention to the long service of two retiring councillors. Nora Swinford first joined the Parish Council in May 1996 and so has been a councillor for 20 years, while Ken Bowers has served for 36 years. We thank them for their joint commitment of 56 years.

## **PARISH MATTERS**

Hopefully it hasn't escaped your notice that a new Whilton Parish Council has been elected. Covering the communities of both Whilton and Whilton Locks, the first formal meeting of the 7 members was held on 11 May, commencing with a formal handover from the outgoing council to the new incumbents.

The outgoing Parish Council members had done a splendid job for what can at times seem to be a thankless task, and it is important to acknowledge their valuable contribution to our communities. Several of the former members had served a considerable number of years on the Council, and together they achieved a number of major successes for the benefit of the communities. For their efforts over the years, we thank them and wish them well for their future endeavours.

So what of the new Parish Council members? To introduce ourselves to the wider communities, leaflets were distributed detailing information about the new Parish Council and its members. Some are long standing members of the community, whilst others are relative newcomers. We all come from a variety of backgrounds, with some already members of other committees around the parish. But we all share a common belief – we all want to help and support the communities of this parish to strengthen the bond that makes both Whilton and Whilton Locks such special places for us all.

To help build and develop this common belief, we need the support of the community members. To assist this, one of the proposals we have now instigated is to be more open to the communities we serve. Whilst we can issue correspondence through Newsletters and websites, it is more beneficial to have real dialogue with the community members about concerns, improvements or any issues or proposals that they want to raise to the Parish Council.

To that end, we encourage you to contact us, either by writing or talking to us around the parish. Indeed we have also set up details of our contact addresses and a direct e-mail address on the Parish Council website at [www.parish-council.com/whilton/](http://www.parish-council.com/whilton/), which can be used to contact us directly. Alternatively we hold a regular meeting in the Whilton Village Hall to which all community members are free to attend, the dates for which are published in advance on the village notice boards and on the Website.

This is your community, and your new Parish Council. So please do raise your issues and concerns with us and come along to the meetings to hear and understand the issues being discussed. We all very much look forward to serving our communities.

Randal Smith, Chairman of the Whilton Parish Council

## Visit to Buckingham Palace

Earlier this year I received an invitation to visit Buckingham Palace and meet Princess Anne. How did this come about?

I am Treasurer of the Royal Association of British Dairy Farmers (RABDF). RABDF is the only independent specialist sector body dedicated to representing the interests of British Dairy Farmers. Every year we present the Princess Royal Award. This year the winner was John Alvis for his outstanding contribution to the dairy industry. The winner is invited to Buckingham Palace to receive the award and RABDF take a party of six or seven people to take part in the presentation.

So that is why I was outside the Palace with our Chief Executive and other Council Members being taken through a security check in order to get through the famous gates.

Once inside we were ushered up a very wide staircase, along a corridor lined with portraits of the Royal Family and in to a reception room that looked down on to The Mall.

Princess Anne joined us, shook hands and then presented the award to John Alvis. She then chatted informally for at least half an hour.

Overall a very interesting visit and fortunately there was an official photographer to capture the event.

Jon Brierley



## NEWS FROM ST ANDREWS

The new Parochial Church Council has been quite busy over the last weeks. In addition to our regular services, we have been working towards the installation of an alarm system in order to protect the roof from the increasing threat of metal theft. The cost of replacing the metal is significant and many churches have also suffered interior damage.

The system is now installed and operating.

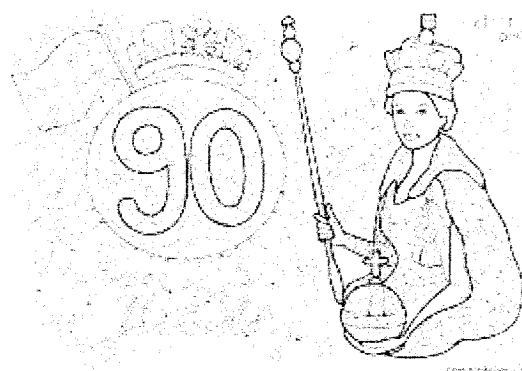
On 11 June we plan to hold an afternoon tea event in church to celebrate the Queen's 90<sup>th</sup> birthday. Hopefully the bells will be rung to mark the occasion. We do hope that you will be able to join us.

We continue to rely on volunteers in order to keep the building in good condition. Thanks to Trish who organises the cleaner and flower rotas. Thanks also to those village residents who help out with this. Thank you to our cleaners: Sue, Anne, Jane, Ian and Mary K. Thanks also to our flower ladies: Janet, Moanna, Mary E, Ros and Lynn.

If you have any ideas on how we can develop and bring the church closer in to village life, we are always interested to hear suggestions and get your help. I can be contacted on 843380 or by email [Jbrierley1@aol.com](mailto:Jbrierley1@aol.com).

Jon Brierley, 7 Langton Rise

### HER MAJESTY QUEEN ELIZABETH 90<sup>TH</sup> BIRTHDAY



**YOU ARE INVITED**

**TO TEA AND CAKES**

**AT ST ANDREWS CHURCH**

**SATURDAY 11 JUNE 3.00 – 4.30**

# WHILTON GARDENERS' ASSOCIATION

At our April meeting, our speaker was Anita Thorp, who talked to us about 'Woodland Plants'. Anita and her husband Andrew, run a small nursery in Theddingworth, Leicestershire, where they specialise in galanthus (snowdrops). Anita had brought with her a couple of late season snowdrops along with a wealth of other woodland plants such as erythroniums and trilliums. She entertained us for an hour describing them all.

On 1<sup>st</sup> June Brian Ellis from Avondale Nurseries in Coventry will be talking to us about 'Texture and Foliage in the Garden'.

We are currently planning a trip to Upton House and Gardens on July 16<sup>th</sup>. This will be an addition to our published programme for the year. Upton House is a National Trust property situated to the North West of Banbury. The gardens were designed by Kitty Lloyd-Jones and Lady Bearsted in the 1930s. By going as a group we will be able to benefit from a guided tour of the gardens.

Our August meeting will follow the usual format of visiting the gardens of two or three members, finishing up with a buffet supper. Non-members are welcome for a small fee to cover the cost of the buffet. Further details will be given nearer the time.

For further information about WGA contact Maurice Archer on 843081 or Roy Haynes on 844673.

---

## **Captain Henry Reynolds, V.C.,M.C.**

The working party and the Parish Council are continuing to prepare for the centenary event in September 2017, and we hope to be able to provide more information about the plans and the involvement of our parish community in the next issue.

If you wish for further information before that please contact Anthea Hiscock 843319.



## 90 YEARS AGO

If we had visited Whilton in 1926, the year of the Queen's birth, here are a few of the people we might have met.



Charlie Hancock and his wife, talking with their daughter Nellie Essen and their little granddaughter Phyllis Essen, outside Cottam

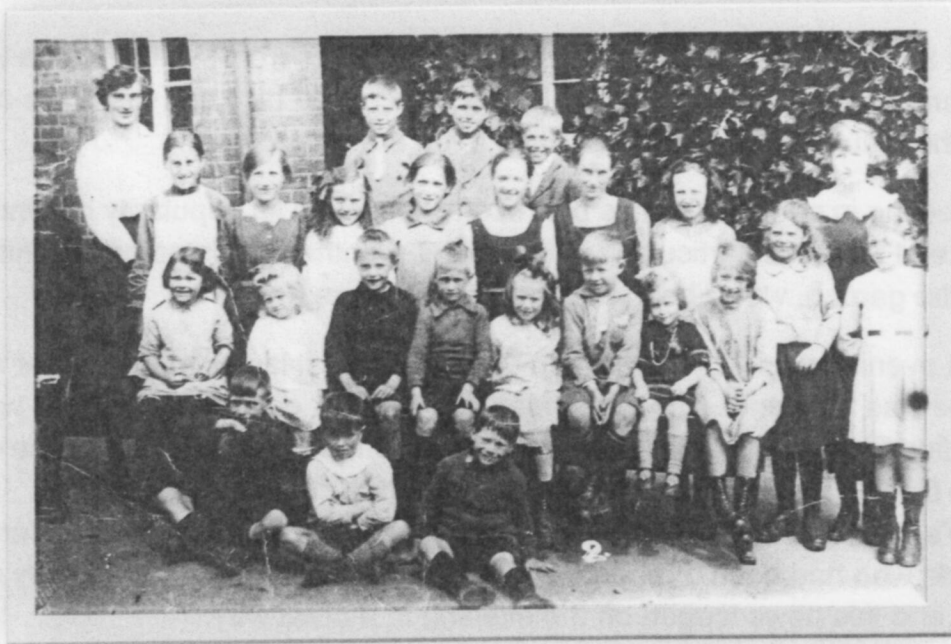


Farmer James Emery with Miss Dorothy Dyer, who was sub-postmistress and church organist. She lived in Rose Cottage.



John and Charlotte Dunkley in their younger days. John was 67 in 1926.





The village schoolchildren with their teacher,  
Mrs Hilda Osborne



Mrs Elizabeth Townley at  
Churchgate, with her son, Shelah,  
and daughter-in-law, Blanche.



William Welch and his wife Florence,  
who kept the shop, with their sons Lawrence,  
Norman and Donald.

## WHILTON LADIES POT LUCK SUPPER

The Pot Luck Supper is an occasional evening when ladies from Whilton come together to eat, drink and chat. Everyone brings along a pre-cooked dish and their own choice of drink and the result is a veritable feast and a fun evening to boot.

We began meeting in people's homes but recently because its popularity has increased our numbers and because particularly in the colder months there's no opportunity to spill out into the garden, we've been meeting in the village hall.

The last such evening was 22<sup>nd</sup> April when seventeen local ladies met together and the general theme was 'England'. The menu featured 'english' dishes and the hall was decorated in fine fashion with flags, bunting and red and white flowers as we celebrated St., George's Day as well as The Queen's 90<sup>th</sup> birthday and the 400 years of Shakespeare's birth and death. However, there was also a surprise toast to Teresa and Ian Woods who had been married the previous day on the 40<sup>th</sup> anniversary of the day they met and this news topped off the evening in a great way.

Ladies Pot Luck supper is not an exclusive club by any means - we're a friendly lot and any ladies living in the parish are welcome. We meet every few months, not necessarily on pre-fixed dates, so if you're interested why not contact Ann Gilbert on 01327 843169 and she'll tell you more.

.....

## VILLAGE AND SPINNEY TRAIL

On the afternoon of St George's Day, Saturday 23<sup>rd</sup> April, nearly 30 people were involved in a trail round the village and Roughmoor Spinney. There were clues to answer about houses and places in the village, and there were hidden items to find in the Spinney.

The Spinney was wet and muddy underfoot, but was colourful with yellow celandines, marsh marigolds and a few late primroses, with still some pale pink butter burr and the blue of ground ivy and bluebells. Having completed their walk there were cakes and tea in the Village Hall. The Pot Luck Supper organisers of the previous night had left us their flags, red and white flowers and bunting giving a festive feel to the hall for St George's Day.



*A little dragon peeps out among the branches for St George's Day*

We thank everyone who helped in any way. The Spinney belongs to the parish, but is run by a Management Group of volunteers. At present we have only one permanent officer. Richard Bunce, the treasurer, or Janet Bowers the acting Chair, will be very happy to talk to anyone who may be interested in helping in any way.

## IN MEMORIAM

### **DERRICK TIBBS**

We record with sadness the death of Derrick Tibbs of 5 Southview on 4<sup>th</sup> March 2016, aged 66. His funeral was held at St Andrew's Church on 29th March.

Derrick was a local man from a long established Norton farming family. The son of Arthur and Elizabeth Tibbs, he was the second of their three boys, and had a country upbringing, enjoying climbing trees, shooting, fishing, dam building and driving old bangers on the farm. His love of the outdoors was continued from his childhood into adult life, being able to identify birds and trees wherever he went with the family.

He married Linda in 1972 and in 1977 they moved to Whilton just before the birth of their first child, Sarah, followed by Andrew in 1980.

He was remembered for his keen interest in fishing, his support for the Saints and his love of fast cars. His family reckon he must have had the world record for the most photos taken at Silverstone during a Grand Prix! Photography was another of his interests.

Most of all, however, he found great pleasure and fulfilment in the achievement of his children, Sarah and Andrew, and in recent years his four grandchildren, James, Thomas, Yili and Beau, became his favourite ever hobby and brought him true joy.

We extend our sympathy to Linda and the family.

### **MARK EYTON- JONES**

We also send condolences to Bennie and the family of Mark Eyton-Jones of the Stone House. Born in 1937, Mark died in April and his funeral and memorial service were held at the parish church on 22<sup>nd</sup> April. His family recalled his career in the shoe industry and his love of sport – shooting, fishing and golf.

Bennie would like to thank the villagers for all their kindness.

*Rev Sue Kipling, the Rector, may be contacted on 01604 770402 or e-mail: [suekipling@btinternet.com](mailto:suekipling@btinternet.com)*

## FAMILY NEWS

### CONGRATULATIONS!

Forty years to the day since they met in a Loughborough nightclub, Teresa Leadbetter and Ian Woods married in a quiet ceremony at Northampton Guildhall. They were attended by a handful of close friends and had managed to keep their plans secret surprising their family and wider circle of friends with the news after the event. Teresa had taken advantage of the Leap Day on February 29<sup>th</sup> and proposed to an unsuspecting but delighted Ian during the morning.



The wedding was reported in the local newspapers after a freelance photographer who happened to be at the Guildhall got into conversation with Ian before the ceremony and decided it was a story worth reporting.



The happy couple honeymooned in Norfolk and were delighted to be met on the beach by friends who had rented and decorated a beach hut and provided a picnic and chilled champagne.

Ian and Teresa would like to take this opportunity to thank their friends in the village for their good wishes.

We are always happy to include your family celebrations and achievements, but please remember to let us know about them.

### CHRISTIAN AID WEEK: 15 – 21 MAY

Thank you to those village residents who were generous enough to support our collection for Christian Aid which raised a total of £ 312.68.

Thanks also to Jon and Trish for delivering the envelopes and to our collectors Phil and Keith.



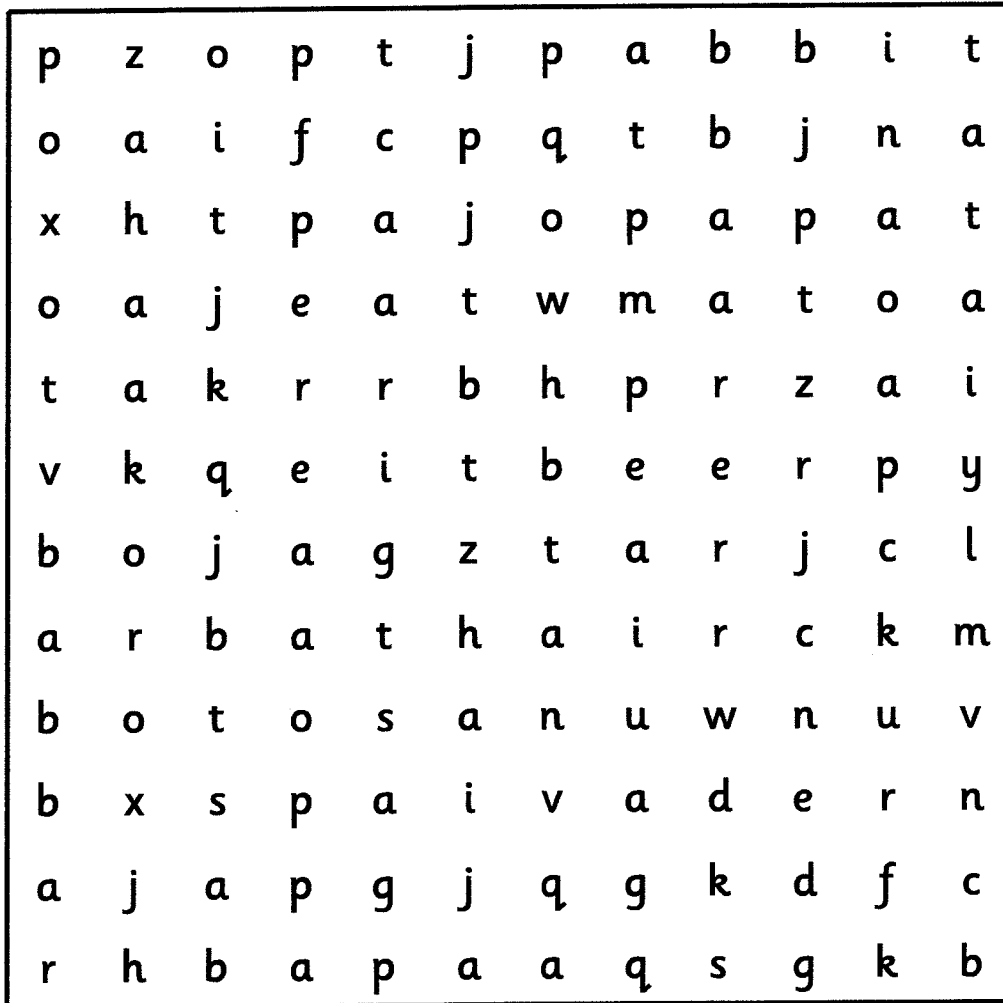
Jon



# Father's Day Wordsearch



Can you find the word for Father in all these different languages?



Abba (Hebrew)

Athair (Irish)

Babba (Arabic)

Bapa (Malay)

Father (English)

Haakoro (Maori)

Otosan (Japanese)

Pabbi (Icelandic)

Pai (Portuguese)

Papa (Russian)

Pater (Latin)

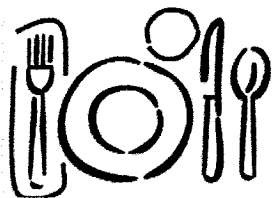
Pere (French)

Tata (Polish)

Tatay (Filipino)

Vader (Dutch)

## THE SPRING SOCIAL LUNCH 3<sup>RD</sup> MAY 2016



15 persons sat down to a very pleasant well-presented meal of fish pies with roasted vegetables. For dessert there was a tiramisu, lemon cheesecake and sticky pear pudding – all very delicious. Custard and cream were served. Soft drinks were served during the meal and tea and coffee with chocolate mints were offered afterwards.

This was a very enjoyable social occasion. Please come and join us next time, you are very welcome.

The next lunch will be on **Tuesday 19<sup>th</sup> July** at 12.30 for 1p.m.in the Village Hall.. You can book in advance by phoning Jane Thomas 843395 or Anthea Hiscock 843319 by Saturday 16<sup>th</sup> July.

### WHILTON VILLAGE HALL 200 CLUB 2016/2017

#### **APRIL 2016**

1<sup>ST</sup> PRIZE                      Jane Thomas

2<sup>ND</sup> PRIZE                     Richard Patching

#### **MAY 2016**

1<sup>ST</sup> PRIZE                     Gareth Morris

2<sup>ND</sup> PRIZE                     Ian Woods

**Congratulations to all the prize winners**

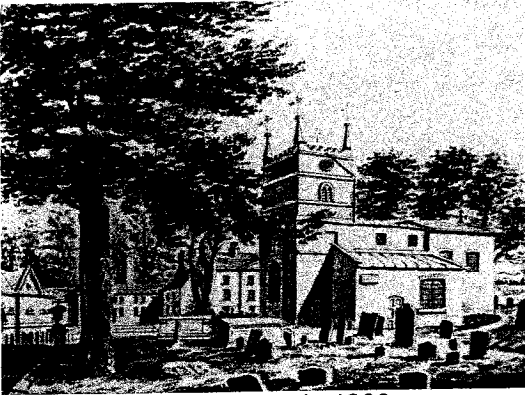


## **Whilton Warblers**

On Sunday 22<sup>nd</sup> May the Whilton Warblers took part for the first time in the Northampton Music Festival. Despite the daunting sound of this, it proved to be an enjoyable experience, once we had got over our nerves. This was the first time we had sung in a really big hall (at Northampton High School). Our section was not competitive, although there was an adjudication, which was encouraging, with some aspects for us to work on. We sang our three prepared songs and were able to listen to the Creaton Singers and "The Lost Chord" singers from Byfield.

Judit will now be busy preparing us for our next concert in Whilton Church on Friday 1<sup>st</sup> July. Tickets will soon be available, so please watch the notice board for information.

**7<sup>th</sup> JULY 1866**  
**THE CHORAL FESTIVAL AT PETERBOROUGH**



*Whilton Church as it was in 1866*

Singing in choirs in Whilton has a long history. 150 years ago 12 choristers from Whilton had the opportunity to be part of a parochial choir festival in Peterborough. A few other local choirs attended, including 17 singers from Daventry, 10 from Brampton and 13 from East Haddon.

As Long Buckby station did not yet exist, they probably travelled to Rugby or Northampton to catch one of the trains heading for the cathedral city.

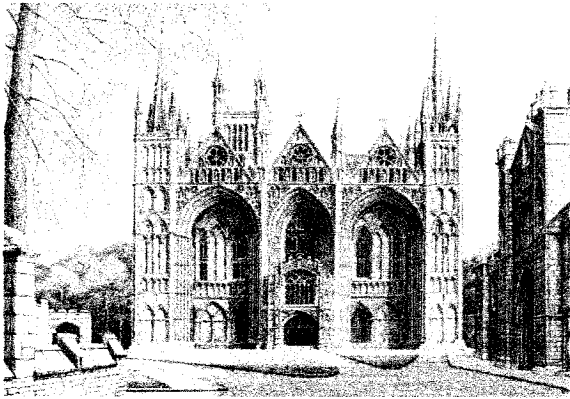
Here are some contemporary extracts describing what must have been a memorable day for those Whilton singers.

“At 9.30 the first special train rolled into the Bridge-street Station, and deposited its crowded freight. This was the one from Blisworth and Northampton. Special after special rapidly succeeded with the utmost punctuality and regularity, (seven in all, from Blisworth and Northampton, Lamport and Northampton, Rugby. Leicester, Nottingham, Bourn, and Boston, besides the ordinaries, which were extra freighted. Nothing could exceed the excellence of the arrangements of the three railway companies, viz., the London and North-Western, the Midland, and the Great Northern, and no praise is too great to bestow on the officials for the highly creditable manner in which these arrangements were carried out, and for the civility and attention shown choirs and visitors.”

“Fortunately, the morning broke clear, bright, and beautiful, presaging a truly festival day. Scarcely a cloud obscured any part of the azure canopy, and the dashing rainfall of the night had cooled the atmosphere and made it delightfully refreshing. As one approached the city there was the Nen [sic] stretching its silvery length along the verdant valley by its side, with a few sleepy-looking barges resting on its bosom, and the drooping willows on its margin dipping the tips of their foliage in its glittering waters. Beyond, the beautiful towers and spires of that noble monument of our forefathers’ piety reared their heads far above the lofty trees that surround them, and the bells of the parish church pealed forth their silver-toned melody.”

“At the sound of the bugle the unsurpliced choir, to the number of 953, assembled around their respective boards, according to their tickets and the parts they had to take, while the augmented cathedral choir, numbering 82, surpliced in the training college.

The processions started at 10.30 precisely, numbering in all 1035, and passing four abreast through the Deanery garden, reached the western quadrangle, where they halted. Here, with banners flying, such as one seldom sees for beauty and chaste designs, with robed clergy and surpliced choristers forming no inconsiderable moiety of the whole, the assemblage presented a most interesting and picturesque effect, not a little heightened by the accessories of the noble western front of the cathedral and the dense and beautiful foliage of the trees around."



*The west front of Peterborough Cathedral*

The massed choirs began singing outside and then processed into the cathedral, although the writer was critical. "The first two verses were sung by the choirs whilst stationary, and the effect in the open air was very grand, and still more so was it as the procession entered the cathedral through the western portal, but, in moving up the nave, a little unsteadiness was painfully perceptible, and the basses dragged behind. In the afternoon this was still more painfully the case, the time being very indifferently kept."

The choirs must have sung themselves hoarse with hymns, chants and responses, but the anonymous recorder of this event was critical again: "With one exception, all the hymn tunes begun on the second beat, which is apt to throw out of tone and accent such a vast collection of singers." On the whole, however, the reporter considered the festival a great success.

"At the time of entering the Cathedral the clouds had begun to gather heavily, betokening a storm but for a time they cleared away, but no sooner had the service ended and the choristers and visitors returned to the Toothill-field, than the storm burst in all its fury. The thunder and lightning were for a time terrific and the rain poured down in torrents. The marquees served their purpose well, yet a little wet drenched through. An admirable dinner was provided in either tent. The usual graces were sung before and after meat, and they were given with fine effect."

"After dinner there was not much time for reunion or to visit the city, consequently many absented themselves from the evening service, which is very much to be regretted, because it was the finest service of the two....Visitors and choristers soon dispersed, and by seven o'clock the specials had cleared the city of all."

It must have been a late home-coming for the Whilton group, but what a tale they had to tell!

*Anthea Hiscock*

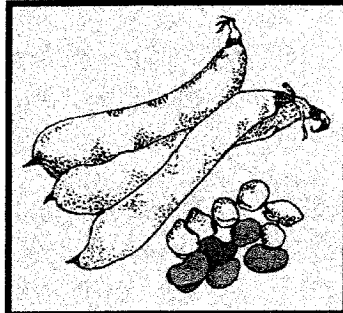


## EATING YOUR BROAD BEANS

In the late 20<sup>th</sup> century, Kunda Cottage (now Holly Cottage) was the home of Philip and Jean Waights. Jean wrote down her recipe for a lemon sauce to eat with broad beans, which will soon be in season.

Her recipe was succinct, and used imperial weights.  
A gill is a quarter of a pint or 5 fluid ounces.

1 oz flour  
1 oz margarine  
1 ½ gills stock  
Juice of a lemon  
1 egg yolk  
1 tablespoon cream



### Method

“Make a roux\*, add stock – bring to the boil; and boil well, add lemon juice and season. Just before serving add egg and cream.”

\*To make a roux: melt butter in a saucepan. Stir in an equal amount of flour and cook the mixture for just under a minute – this is known as a roux. Stir in the stock, a little at a time, making sure to stir well so that no lumps form. Bring the mixture to the boil, stirring constantly, so that the mixture thickens and becomes glossy.

\*\*\*\*\*

### **Recycle your old mobile phone charger**

Friends of the Earth works with ShP for Charity to recycle your mobile phone and charger responsibly and ethically. Friends of the Earth will receive a donation for every phone recycled (address below).

Got an old mobile phone charger? Send in an envelope or jiffy bag (address below) and they can help recycle the component materials. Friends of the Earth does not receive a donation from these, but they're keen to avoid chargers going straight to landfill.

ShP works with a local community project where young offenders help recover the component materials from all donated items, including chargers.  
Send in an envelope / jiffy bag to:

FREEPOST RSBR CHGG BLZX, 'Friends of the Earth', ShP Limited, The Old Reebok, Southgate' White Lund Industrial Estate, Morecambe LA3 3PB

## **Whilton Local History Society**

### **“CHUCK AWAY THE CHINTZ”**

About 20 members met on Friday 15<sup>th</sup> April, when Wendy Raybould from West Haddon introduced us to the Northamptonshire textile industry in the 1700s. Brightly coloured patterned chintz had been very fashionable, but this import was undermining our own textile makers, who were often the very poor. In an attempt to provide continued work for them, and to save rises in the poor rates, chintz was banned from being imported, or even worn. As a result of this and the arrival of skilled refugee woolcombers and weavers from Europe, our skill base improved and the production of a variety of woollen materials blossomed.

Kettering was a very important centre for weaving, but Long Buckby was one of the centres for wool combing needed for the production of worsteds. We heard details of some who worked in local villages, including West Haddon, Crick, Dodford and Whilton. We saw illustrations of spinsters, weavers and combers and some of the variety of textiles they produced, from tammies and shalloon to moreen. Locally made moreen bed hangings can still be seen at Canons Ashby.

By the end of the century, however, cotton imports were allowed again and with the beginnings of steam and water-powered machinery the old cottage industries died very quickly, bringing abject poverty to those who had been part of this local activity.

\*\*\*\*\*

**The next meeting of the Local History Society will be a  
WHILTON VILLAGE HISTORY WALK.**



**This will be on Saturday 9<sup>th</sup> July 2016.**

**Meet at Langton Rise at 2.30p.m. for a wander round the village,  
stopping at points of interest.**


**Tea and biscuits will be served in the Village Hall at about 3.30 – 4 p.m.**

**All are welcome. There will be no charge.**

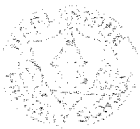
**If the weather is uncertain, please watch the notice board or ring 843319.**

## *Thank You Whilton Village*

*Martin Amery*

|   |  |
|---|--|
| <p><i>Thank you for allowing Hugo Thomas on his second birthday time to explore one of your tractors with his family. He talks about it every day, and will remember this for many years to come.</i></p> <p><i>Mark and Sarah</i><br/><i>The Old Post Office</i></p> |  |
|---|--|

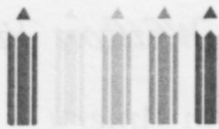
*Brian Melling*

|  |   |
|--|---|
|  <p style="font-size: 1.2em; margin-top: 10px;"><b>Harlestone<br/>Primary School</b></p> | <p><i>Thank you for providing the children in Class 1 at Harlestone Primary School with an assortment of plants, to help them learn about the different types of roots. The children thoroughly enjoyed handling the plants and looking for minibeasts!</i></p> <p style="text-align: right;"><i>Mrs Thomas and Mrs Haywood</i></p> |
|--|---|

\*\*\*\*\*

### SUMMER ACTIVITIES BRINGTON MUMS AND TOTS

|   |   |  |   |   |
|---|---|--|---|---|
| <i>June 3<sup>rd</sup></i><br>Buggy walk - weather permitting                                 | <i>June 10<sup>th</sup></i><br>CLOSED FOR HOLIDAYS  | <i>June 17<sup>th</sup></i><br>CLOSED FOR HOLIDAYS             | <i>June 24<sup>th</sup></i><br>Playtime as normal   |   |
| <i>July 1<sup>st</sup></i><br>SUMMER PARTY!<br>Children's fancy dress competition and prizes! | <i>July 8<sup>th</sup></i><br>Playtime as normal    | <i>July 15<sup>th</sup></i><br>Playtime as normal              | <i>July 22<sup>nd</sup></i><br>Messy Play - Water   | <i>July 29<sup>th</sup></i><br>Playtime as normal |
| <i>August 5<sup>th</sup></i><br>Teddy Bears' Picnic - Kimbells Field.<br>Details to follow    | <i>August 12<sup>th</sup></i><br>Playtime as normal | <i>August 19<sup>th</sup></i><br>Messy Play - Pasta/Rice/Paper | <i>August 26<sup>th</sup></i><br>Playtime as normal |   |



## Brington and Whilton Pre-School

The children, staff and parents have had another very busy term starting with the Easter Egg Hunt and then the Sweet Stall at Brington Primary School Fete, all money raised will go towards new equipment – thank you to all who supported these events.

During this term we have been going to Forest School on a Friday morning and thanks go to the Chantry Trust who have supported some of the children to attend. They have had great fun rolling down hills, playing hide and seek, making potions and den building to name a few activities we have enjoyed. On our last session we built a fire and cooked marshmallows and popcorn.



Climbing Trees



Snack time



Mixing Potions (to make the sun shine!!)

We have continued to go down to the Spinney and enjoyed minibeast hunting there which is our theme this term. A team from Whilton Garden Centre came in and brought us some bigger 'mini' beasts such as snakes, large spiders, tortoise and lizards – the children really enjoyed this and were surprisingly very brave at handling and stroking them.



If you have a child who is 2 years old and ready to start a small caring Pre-School we have spaces in September. Please do not hesitate to contact Jenny Holman 01604 770083 or 07948724415 and book a visit to come and see us. Further information can be found on our website at [www.bringtonandwhiltonpreschool.org.uk](http://www.bringtonandwhiltonpreschool.org.uk)

**THE ALTHORP PARTNERSHIP OF PRIMARY SCHOOLS  
HARLESTONE AND BRINGTON  
NEWSLETTER MAY 2016**



The summer term is well under way and the children have already enjoyed lots of different activities with the promise of more to come.

### **Easter celebrations**

Children at both Harlestone and Brington took part in Easter services. The Friends of Brington School(FOBS) also organised an Easter egg hunt for children at Brington. Both of these events were very successful. Thanks to the FOBS for organising.

### **KS2 Shakespeare in a Day**

In recognition of the 400<sup>th</sup> anniversary of Shakespeare's death, class 2 from both Brington and Harlestone joined forces to perform a 'play in a day'. Working with the support of 3 representatives from The Royal and Derngate Theatre, they worked incredibly hard to produce and perform 'A Midsummer Night's Dream'. They all worked really well together and were able to produce a brilliant performance - there may be one or two Shakespearean actors in our midst! Thank you to all those who came and watched the final performance. Your support is greatly appreciated.

### **Queen's Birthday Celebrations**

In recognition of the Queen's 90<sup>th</sup> birthday we held celebratory events in both schools on Thursday 21<sup>st</sup> April. At Brington there was a cream tea afternoon which was organised by the FOBS. Children had painted portraits of the Queen and these were judged by our special guest, Jo Whiley. Both events were very successful, thank you to all those who attended and thanks to the FOBS who organised the event at Brington.

### **Sports Crew Day**

On the 25<sup>th</sup> April 8 of our year 5 children from Brington and Harlestone went to the Kings' Park Conference Centre at Moulton Park to take part in a Sports Crew Day. Whilst there they took part in a variety of activities which were designed to enable them to have the confidence and skills in order to lead playground games at break and lunch times. They will receive further training and will soon be playground leaders, delivering games and activities for other children to take part in.

### **Brington School Fete**

The Brington School fete took place on Saturday 7<sup>th</sup> May. The fete was organised by the FOBS and was a great event. There was a wide variety of stalls, food and drink as well as the traditional crowning of the Rose Queen. Fortunately the weather held and we were able to enjoy Maypole dancing as well as performances from a group of Morris Dancers. Thank you to all those who attended - over £1000 was raised which is a superb amount for a small school. Thank you to everyone who helped out before, during and after the day.

### **Forthcoming Events**

There are a number of exciting events planned for the remainder of the summer term. These include trips to Frankie and Benny's and to Cadbury's World as part of our topics on Italy and Brazil. Also planned are a variety of sporting events including cricket, tennis and athletics as well as our sports day which takes place at Harlestone institute on Wednesday 22<sup>nd</sup> June. There is also the ever-popular 'Brington's Got Talent' to look forward to which takes place on Friday 24<sup>th</sup> June. Please do come and support these fantastic events. Your support is very much appreciated.

John Sarbutts,  
Executive Headteacher

# Family Fun

## *Fun Things to do on a Walk - Journey Sticks*

Use wool to tie found natural objects to a stick in the order they were found. Then use it to help retell the story of your journey.



## *Happy Father's Day*

*by Marian Jones*

*Since the day that I was born  
You have been my guiding light;  
The one I always turn to  
When things aren't going right.*

*You are generous with your time  
When I need a helping hand:  
If sometimes I'm neglectful,  
You always understand.*

*You've been my inspiration,  
As the years have come and gone;  
A gentle loving Father,  
Whom I can depend upon.*

*So on this special Father's Day  
I send my thanks for all you do;  
For no-one in the world deserves  
More happiness than you.*

**The Whilton Newsletter is published quarterly and circulated free to every household within the parish boundary.**

**The costs are met by the Parish Council.**

**The Editors are:**

- **Anthea Hiscock, Langton House, Main Street.  
Telephone: 01327 843319.  
e-mail: [anthea.hiscock@tiscali.co.uk](mailto:anthea.hiscock@tiscali.co.uk)**
  
- **Jon Brierley  
e-mail: [Jbrierley1@aol.com](mailto:Jbrierley1@aol.com)**
  
- **Sarah Thomas  
e-mail: [sarahlouthomas@icloud.com](mailto:sarahlouthomas@icloud.com)**

❖ **The Editors welcome material for the Newsletter. If possible, please send your contribution by e-mail. If you do not have a computer, the editors will be happy to type handwritten articles for you.**

❖ **The next issue will be the Autumn Edition, covering September - November 2016. The last date for contributions will be 10<sup>th</sup> August 2016.**

❖ **The Newsletter is published quarterly, but Whilton also has a website: [www.whilton-village.net](http://www.whilton-village.net). This contains details of the organizations in the parish, previous Parish Council Minutes and Newsletters and a comprehensive Picture Gallery. It also has latest news and updates on parish events.**

**There is also now a Parish Council website:  
<http://www.parish-council.com/whilton>**



## WHAT'S ON IN WHILTON

### SUMMER 2016

| DAY  | DATE      | TIME                       | PLACE                                | EVENT   |
|------|-----------|----------------------------|--------------------------------------|---|
| Wed  | 1 June    | 7.30 p.m.                  | Village Hall                         | Whilton Gardeners Association. Brian Ellis: Texture and Foliage in the Garden     |
| Sun  | 5 June    | 10 a.m.                    | Harlestone Church                    | Benefice Sung Eucharist   |
| Sat  | 11 June   | 3 – 4.30 p.m.              | Church                               | Tea and cakes and bell ringing to celebrate the Queen's 90 <sup>th</sup> birthday |
| Sun  | 12 June   | 9.15 a.m.                  | Church                               | Worship for All   |
| Sun  | 19 June   | 6 p.m.                     | Church                               | Evening Communion   |
| Sun  | 26 June   | 11 a.m.                    | Church                               | Worship for All   |
| Fri  | 1 July    | 7.30p.m.                   | Church                               | Whilton Warblers Summer Concert   |
| Sat  | 9 July    | 2.30 p.m.<br>3.30 – 4 p.m. | Meet at Langton Rise<br>Village Hall | Whilton Local History Society Village Walk, followed by :<br>Tea and biscuits     |
| Wed  | 13 July   |                            | Village Hall                         | Parish Council meeting  |
| Sat  | 16 July   |                            |                                      | Gardeners Association outing to Upton House Gardens                               |
| Tues | 19 July   | 12.30 for 1 p.m.           | Village Hall                         | Summer Social Lunch   |
| Wed  | 3 Aug     | Evening                    | Venues TBA                           | Whilton Gardeners Association: garden visits                                      |
| Wed  | 10 August |                            |                                      | Last date for contributions to Newsletter   |

**Regular weekly events include:**

- **BRINGTON AND WHILTON PRE-SCHOOL in the Village Hall:**  
Term time: Mon, Wed, Fri: 9.30 a.m. – 1 p.m. and Mon, Wed 1 – 3 p.m. for over 3's.
- **BELL RINGING at the Church: Mon: 7.30 p.m. - 9 p.m.**  
For further information please contact Justin Baker 844263 or Janet Bowers 842851
- **WHILTON WARBLERS CHOIR in the Church: Term time: 7.15 for 7.30 p.m.**
- **CHURCH SERVICES in July and August: please see the notice board.**