

Whilton
Summer Newsletter



Step into summer

June – August 2017

SUMMER 2017

LETTER FROM THE EDITORS

Welcome to our summer edition, which this year has an emphasis on the environment. The Village Hall was even adorned with lacy cow parsley for the Annual Parish Meeting, which is recorded in this issue. We also include a resident's letter of thanks for the recently planted spring bulbs.



In an attempt to help care for our own surroundings, the Parish Council has acquired its own litter-collecting equipment to help keep our village tidy. Meanwhile the Pre-School has an inventive recycled music centre in Roughmoor Spinney. Our front cover features a pathway in the Spinney, which is a place for wildlife and those who wish to enjoy it.

Poetry expresses another resident's concerns about how we may destroy what we should appreciate, as Stan Henniker has put pen to paper over fracking.

We also have an article drawing our attention to what we may see through clear dark skies far above the village on some August nights.

Enjoy the summer months in Whilton!

The Editors

Parish Council News



The Annual General Meeting of the Whilton Parish Council was held in the Whilton Village Hall on Wednesday 10 May. Thank you to those who attended. To those who didn't, you missed out on an excellent spread of cheese and wine that we now do at our Annual Parish Meetings!

From myself as the Chair, the key areas that the Parish Council have been working on for the past year are:

- **Allotments.** The allotments located in Whilton village are leased from the Daventry District Council (DDC), who retain the right to develop the land for property if they choose to in the future. Hence, 10 months ago, the Whilton Parish Council asked to purchase the land from the DDC to secure it for the long term future as allotments for the residents of Whilton and Whilton Locks. Through a long convoluted complex process working with the DDC, the purchase was agreed, contracts drawn up and paid for through legal services, and everything was almost completed. However, the DDC Senior Management Team then rejected the request – totally unexpected by all on both sides. Given the time, effort and cost expended thus far, the Parish Council are now in the process of escalating and challenging this rejection.
- **Broadband.** Currently a contentious subject, but you will be aware that Whilton and Whilton Locks can receive fibre broadband from BT, however, this is only fibre up to the exchange cabinet in Long Buckby, with copper wire then to the premises. Speeds can vary dependant on the distance to the exchange. There is a programme called the Northamptonshire Superfast Broadband initiative (www.superfastnorthamptonshire.net/Pages/home.aspx) which will roll out superfast broadband to homes and businesses in the region by the end of 2018, by providing a fibre connection direct to the premises to provide much faster speeds. They are now entering the third and final stage of the roll out, where the contract has been awarded to Gigaclear, who can provide a variety of packages and speeds of 50Mb plus. Full details at www.gigaclear.com. They are currently in the planning and survey stage and will commence the roll out in mid-2017.

At this stage, it is not known when the fibre connection will be available in our villages, but this should be known by late June 2017. Check the Superfast Broadband website for the latest details. In addition, the Parish Council have also approached BT to determine their intentions of improving their broadband services to the village. BT have launched a Community Fibre Partnership

scheme (www.communityfibre.bt.com) with the intent to bring fibre broadband to all. Firstly, for our villages, this will bring competition to the market. However, checking the website, it indicates that we are all already connected to fibre broadband as mentioned earlier. That said, through discussions with BT Regional Partnership Director, if we all register our interest on the website, BT can then carry out an analysis via Openreach to determine the best technical solution for the village. **Hence, we need the support of the villagers to enter their details on the site in order to try to improve the BT broadband speed.**

- **Community Speedwatch.** We have 14 volunteers, which is a fantastic commitment from a small village. Training is taking place in July and we will have the speed gun equipment for several weeks in August and September. This campaign aims to ensure people stick to the official speed limit of 30mph. We will share our findings in future newsletters.
- **'20 is Plenty' Campaign.** We want, longer term, to get all drivers to reduce their speed to 20mph through the village. Car stickers have been distributed to all homes in Whilton and many of these are appearing in residents' cars. We urge you to display yours please, and there will be random prizes awarded over the summer to owners of cars with the sticker on show.

More free stickers are available from Mark Thomas at The Old Post Office. '20 is Plenty' signage will appear around the village later in the year after the Community Speedwatch campaign. *More importantly we hope you will make your own pledge to keep to 20mph and keep our village as safe as possible.*

- **Defibrillators.** The Whilton Parish Council have purchased 2 defibrillators – one each for Whilton and Whilton Locks, where a number of donations were received from local businesses, and for which we are all very thankful. We are currently in the process of selecting the best location for these devices, which will be mounted in a locked cabinet and need to be connected to a power source. When required, the emergency services operator can give the caller the location of the nearest defibrillator together with the code to open the cabinet. The devices are very easy to use with an audio guide given as you use the device. However, we will also be arranging for a quick training course to be given in the Whilton Village Hall at a future date to all those who wish to attend.
- **Village Litter Pick.** The Parish Council have now purchased their own litter picking equipment, and on Saturday 22 April, a large number of volunteers got together on the village green to form teams to pick up litter throughout the village. Very successful, the efforts of all those who attended were very much appreciated, and we hope to repeat the exercise again a number of times throughout the year to keep the villages tidy.

- **Whilton and Whilton Locks E-Mail Distribution List.** The e-mail distribution list continues to grow for the villages of Whilton and Whilton Locks, where many notices such as a warning of thefts in the area, road closures etc have benefited from a quick widespread distribution via the list. If you are interested in adding your e-mail address to the list (don't worry, only the Whilton Clerk will see it, and you won't get any marketing e-mails etc), please send your e-mail address to clerk@whiltonpc.co.uk.
- **Dog Waste.** This has become a growing problem within the villages. There is a dog waste bin located in the village at the end of Buckby Lane, but on a recent dog walk, I counted 14 dog mess piles in the 100m stretch of fenced pathway across the field within a few metres of the bin at one end. We've also been informed that dog mess has been found on the church path and across many fields. You will shortly be seeing many signs going up asking dog owners to clean up after their dogs. Children play in the area, and there is nothing worse than lazy owners who cannot be bothered to clean up after their animals.
- **Noise Complaints.** A number of residents have complained to members of the Parish Council regarding noise issues in the local area. It is difficult for the Parish Council to quantify any complaints because we do not have the relevant equipment to measure anything. Hence, it is difficult for us to act on any complaints. However, the Daventry District Council do have a Noise Complaints Unit – please find the link to the online reporting form, along with details of what action can be taken. This can be found here <https://www.daventrydc.gov.uk/business/environmental-health/noise-nuisance/>
- **Whilton Parish Council Website.** The Whilton Parish Council also have a website at <http://www.parish-council.com/whilton/> which details all the work that they are doing for the community, together with any notices of interest for the Parish. There is also an e-mail address should you wish to contact the Parish Councillors about any matters relating to the village and this is councillors@whiltonpc.co.uk.

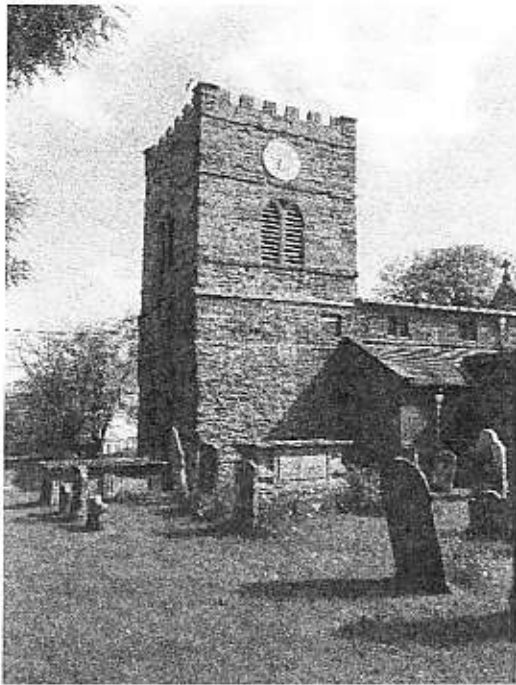
Randal Smith
Chair of the Whilton Parish Council

WHILTON ALLOTMENT GROUP

This is a group of friendly people from Whilton parish, who work on a small site of 14 half-plots in the centre of Whilton.

Interested in joining us?
Please contact the secretary, Jane,
by email, jane_drodge@hotmail.com or phone 01327 844194.

Fees: £12 per half-plot rental + £3 association membership + £6 insurance.



NEWS FROM ST ANDREWS

At our Annual Meeting Jon Brierley and Linda Treacy were re-elected as Churchwardens. Trish Woods is now our Deaconry Synod representative and Phil Grant continues on the Parochial Church Council (PCC).

The church has been quite busy recently and we have a full schedule of services for June which are listed elsewhere. Further information on the services in July to September will be posted on the village and church noticeboard as soon as these become available.

Every five years we are required to undertake an inspection of the building by our architect. This is known as a Quinquennial Inspection. This has

recently been completed and confirms that the building is overall in good condition. There is a small amount of work to be undertaken to the roof and guttering which will be completed when we agree a schedule of work.

The churchyard continues to be maintained in great shape and we are grateful to Roy Haynes for the time and effort that he puts in to this.

If you have any ideas on how we can develop and bring the church closer in to village life, we are always interested to hear suggestions and get your help. I can be contacted on 843380 or by email Jbrierley1@aol.com.

Jon Brierley, 7 Langton Rise

DIANA SCOTT'S' ELDERFLOWER CHAMPAGNE.

Diana Scott used to live in Holly House. This was her recipe.

1 gallon of cold water
1 ½ lbs sugar
Juice of one lemon
Rind of 1 lemon, quartered
2 tablespoons white vinegar
2 large heads of elderflower blossom
Method

“Put all ingredients together in a plastic or earthenware container and let them soak for 24 hours. Strain and put into a screw-topped bottle for at least a fortnight before drinking. Will keep for a year. (Tonic bottles are useful.)”

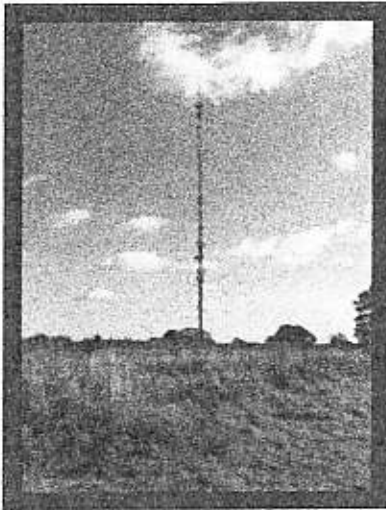
.....

WHILTON LOCAL HISTORY SOCIETY

The society has held two meetings in the last quarter, both of which were well-attended.

BOROUGH HILL

On 17th March the speaker was David Adams, who talked about **The History of Borough Hill** in Daventry. The hill has a long and fascinating story, with prehistoric ramparts, which are clearly visible in many parts.



The many signs of human occupation there include Neolithic tools, and the remains of a large Roman villa, excavated in the 19th century and now under the golf course. We saw a picture of the patterned mosaic floor discovered there. In later times there are signs of the presence of both Saxons and Vikings. Does the discovery of Saxon arrowheads and Viking axes suggest a conflict there? As yet we do not know.

As Daventry developed in medieval times, the main settlement moved down to the present site, but there were still events at Borough Hill, including the year 1645, when Charles I's troops camped there before the Battle of Naseby.

In the 18th and 19th centuries the long flat top of the hill was used for various communal activities and fetes. There was a greasy pole to climb and competitions of all sorts including donkey races and walking races for men aged over 45!

By 1925 the hill gained a new fame as the site from which the BBC broadcast first locally and then to the Empire and the world. David had worked there and had many anecdotes to share. The great masts were a Northamptonshire landmark and we heard how they were finally dismantled. The work-force dwindled with the coming of computers until the broadcasting centre finally moved to Wolverton and the station at Daventry closed.

BANNAVENTA

On 19th May our speaker was Stephen Young, the Director of CLASP (Community Landscape and Archaeology Survey Project). His talk was entitled **Bannaventa in the landscape**.

Many of us have known of the existence of a Roman settlement which straddled the A5 (Watling Street), and whose site is in both Norton and Whilton. After 20 years of research in the triangular area bounded by Bannaventa, Duston and Towcester, and large tracts of geophysical surveys, much more is now known about Bannaventa and its hinterland.

Among the many interesting details, we learned that this area was heavily populated in the Iron Age, and that when the Romans arrived adjustments and changes in ways of living were slow. It now seems that the site of Bannaventa was already a

late Iron Age settlement, which the Romans made use of. The lack of evidence of military sites around here suggests that the local people were friendly towards the Romans, but did not quickly change their ways. It was many generations before the old round houses were abandoned in favour of Roman designs.

Being on the Watling Street it developed as a walled posting station, but its development mirrors changes within the Roman world. Bannaventa means "market on the promontory" and this with other evidence shows this was a flourishing town for several centuries, although its fortunes varied with changing circumstances. Coins and potsherds found show the town was occupied throughout the Roman period and afterwards.

The Roman period lasted from the first century until about 420 AD, but life did not change much for generations after they left. However, during the Roman occupation there were developments and adjustments. Bannaventa came to be more of an urban than a rural settlement. The site was changed a number of times, and it appears that the early wide urban sprawl was changed to a well defended small town with banks, ditches and walls being built and developed in the 2nd, 3rd and 4th centuries. Farming in the area changed from being mixed to adapting for sheep when wool was needed in the Empire, with a later return to mixed farming. There were many villa complexes in the hinterland; some of these may have specialised as Whitehall Farm in Nether Heyford did, producing hares, probably for coursing. There are almost certainly more villa sites still to be identified.

Much of the research which has revealed Bannaventa's history has been carried out by volunteers. If anyone is interested in finding out more, or in becoming a volunteer, the CLASP website is: www.claspweb.org.uk.

The Local History Society Outing

This will be on Friday, 9th June when members of the Society are invited to Holy Cross Church, Daventry, to hear Michael Brown talk about
Jane Austen and Gardens.

The cost is £3 and we will meet at the Green at 6 45 p.m. and arrange lifts.

This talk is part of a weekend, "Jane Austen Festival in Daventry", and Holy Cross Church will also be decorated as part of the flower festival.

If you have not yet booked and would like a ticket, please contact
Anthea Hiscock : 843319 or anthea.hiscock@tiscali.co.uk

Members of the Local History Society will be involved with the events celebrating and commemorating **Captain Henry Reynolds VC, MC** on 20th and 23rd September

The outline of planned events follows.

Celebrating Courage: Captain Henry Reynolds VC, MC



**This is the main programme of events
planned for 20th and 23rd September In Whilton.**

WEDNESDAY 20 SEPTEMBER 2017		
<i>Time</i>	<i>Event</i>	<i>Place</i>
11.30 a.m.	Procession begins led by Royal Scots Association Colour Party	Whilton Hill to Green
Approx. 11.45 a.m.	Unveiling of memorial stone by Lord Lieutenant	Green
Approx. 12.15 – 1.15 p.m.	Thanksgiving service with Bishop of Peterborough	Church
Approx. 1.30 p.m.	Lunch for guests	Canalside Restaurant at Whilton Locks
All morning	Exhibitions of photographs and artefacts	Village Hall
Approx. 2.30 – 5 p.m.	Audio visual presentations	Church
	Fruit, flower and vegetable displays	Church
	Children's project work on display	Marquee
	First World War Whilton trail leaflets available	
	Ordered copies of biography of Henry Reynolds available for collection	
SATURDAY 23 SEPTEMBER 2017		
2 – 5 p.m	Exhibitions of photos and artefacts	Village Hall
	Viewing of decorations	Church
	Exhibition of children's project work	Marquee
2 – 2.30 p.m.	Bell ringing	Church
2.30 – 3.15 p.m.	Musical entertainment by Whilton Warblers in costume	Marquee
3.15 – 5 p.m.	<u>First World War Tea and Cakes</u>	Marquee
3.15 – 5 p.m.	Audio visual presentations	Church
2 – 5 p.m.	First World War Whilton trail leaflets available	
	Ordered copies of biography of Henry Reynolds available for collection	

Quiz Night

On Friday 12th May a successful Village Quiz was held under quiz-master Neil Phillips. There was a First World War theme to the evening, and the winning team went home in triumph, clutching their chocolates.

The proceeds from this evening will go towards supporting the events in honour of Captain Henry Reynolds VC.,MC, on 20th and 23rd September. These will complement the funds we have received from the Heritage Lottery Fund, to help us remember and celebrate our local man who won the Victoria Cross in 1917. The Parish Council and the Local History Society are contributing to this event, and the Village Hall Management Group is providing free use of its premises and equipment. We thank everyone involved.



Whilton is remembering the centenary of the winning of the Victoria Cross on 20th September 1917. Captain Reynolds was born in Whilton Locks and lived here for over 30 years.

Henry was usually referred to as "of Whilton." However, just before the war he moved to live with his wife's family in East Haddon. When he came home from the war, he returned for a short while to his family in East Haddon.

A special service was held in the church. While he was in the village he was presented with a gold watch and an illuminated address, paid for by the villagers. East Haddon held a celebratory dance, but Henry was not well enough to join this, and very soon returned to hospital in London.

This was in December 1917, and so East Haddon will be having an event in December 2017, to which Whilton will be invited.

This is a co-operative project and both parishes will be benefitting from the funds from the Heritage Lottery.

The Village Hall was full for this occasion and another quiz will be held at 7.30 p.m. on Friday 1st September.

Details will be on the website and the notice board in August.

**For further information and tickets contact
Neil Phillips 844182 or Anthea Hiscock 843319**



WHILTON GARDENERS' ASSOCIATION

At our April meeting, 22 members assembled to hear Michael Brown give us an entertaining talk entitled 'The Georgian Gardener', in which he described the tools and methods used and the way of life of a professional gardener in that era.

On 7th June, our speaker will be Caroline Tait, who will be telling us about 'Winter into Spring at Coton Manor Gardens. The meeting starts at 7.30pm in the village hall and non-members will be welcome for a £3 guest fee.

We are arranging a visit to Cottesbrooke Hall Gardens on July 27th, where we are to be given a guided tour of the gardens by the head gardener. Twenty five places are available and, at the time of writing, we have 22 names. Any members who would like to come, but have not yet put their names down, please contact Roy Haynes.

We shall be looking for a couple of volunteers to open their gardens for our August meeting and possibly to host the buffet at the end of the evening. Non-members will be welcome at this event for a £10 fee to cover the cost of the buffet. Further details will be given nearer the time.

For further information about WGA contact Maurice Archer on 843081 or Roy Haynes on 844673.



Whilton Warblers

During the winter months Whilton Warblers have practised in the Village Hall.

This newspaper photo was taken on the occasion when a cheque for £160 was handed over towards Andy Ibbot's walk, raising money for the disability charity Scope.

A Victoria Cross hero from Whilton Locks

This is a special year for the Locks as we celebrate the bravery and leadership of Captain Henry Reynolds who won the Victoria Cross in 1917.

He was born in the Wharf House where the Carpet Shop now stands. It was a brick-built farmhouse, once part of the Whilton Lodge Estate. His father was a small farmer and tenant of John Craven of Whilton Lodge. In addition he ran Whilton Mill and had a coal business, bringing in coal along the canal and delivering to villages around. The wharf beside the house also had lime kilns, the lime being transported by canal.

Henry was known as Harry. His parents had ten children and he was number nine. When he grew up he worked in the family businesses. He was a tall handsome man, with great strength and an ability to lead others. He may have learned some of this at Daventry Grammar School or in the Northamptonshire Yeomanry which he joined in his early twenties and also from his energetic father.



The wedding picture from 1905

He married Gwen Jones from East Haddon and they had two children born in the Wharf House here, before the family moved to East Haddon by about 1913.

Harry fought with the Royal Scots during the First World War, and won the Military Cross in April 1917, before achieving the greatest award for valour in the following September.

The celebrations in September are for the whole parish. The memorial stone is to be unveiled on the Green, not far from the graves of his parents and sister in the churchyard, but Whilton Locks will be included in the event.

Harry was a Locks man, accustomed to boats and trade along the canal. The last boat his father bought was called "The Harry".

If you live or work in Whilton Locks and would like to be part of the event or help in any way, please let us know by phoning 01327 843319 or by e-mail: anthea.hiscock@tiscali.co.uk.



THE PERSEIDS- DON'T MISS THE AUGUST DISPLAY OF SHOOTING STARS

Every August brings the annual Perseids meteor shower. It's always a reliable event and the warm summer evenings make viewing these meteors, or shooting stars, a very enjoyable experience that can be shared with neighbours, or friends and family.

This year's peak will happen on the evening of 12-13 August. The best way to see them is simply to find a spot outside where you see the night sky without too many obstructions and look up. It really doesn't matter which direction you look.


and you certainly don't need a fancy telescope or binoculars. The mark one human eyeball is all you need They should be visible any time of the night although the gibbous moon will hamper things somewhat after it rises at around 11am and brightens the sky, drowning out some of the fainter meteors



Star-gazer Jamie Cooper of Whilton.

The dark skies of Whilton should be a perfect location for this very enjoyable event

Jamie Cooper





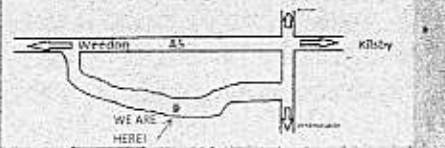
**Saywards
Fruit & Veg
of Whilton**

BROOKLYN HOUSE,
WHILTON LOCKS,
DAVENTRY,
NN11 2NH
01327 843391

Friendly family-run business offering good quality fresh fruit and vegetables. Come and get your 5-a-day and see the farm animals.

OPEN:
FRIDAY 12-6 SATURDAY 10-4 SUNDAY 10-4



FRUIT AND VEG AT BROOKLYN, WHILTON LOCKS

Mark and Frances Sayward have been trading in the fruit and vegetable business from Whilton Locks since 1989, attending various markets as well as supplying local shops and restaurants with fresh produce.

They recently decided to open from home and would love to invite the local residents, and friends, to come along and support them.

IN MEMORIAM

GILL CLEMENTS

A full congregation gathered in St Andrew's Church on 15th May to mark the passing of Gill Clements on 8th April 2017. We print below the eulogy read by Ian Dexter, and extend our sympathy to Maurice and the family.

Gill was born Gillian Margaret Carey in No 42 Main Street, Blacksmith's Corner, Great Brington, on 23 September 1942, younger sister of Bridget and elder sister of twins Tim and Murn. She was christened, confirmed and married at St Mary's Great Brington, her wedding to Maurice taking place on Christmas Eve 1973.

Like most village children she attended Brington School and Duston Secondary School. Her first job was at Mason's, a grocer's and greengrocer's in Gold Street, Northampton. After a few years there she took up employment with Church's shoemakers in St James', where she was engaged in the skilled craft of shoe finishing, and was to stay some 30 years, retiring in 1994 at the age of 52. It was there that she met Kath Lambert from Northampton, who was to become her best friend and remained so for 53 years.

It was through Church's that Gill embarked on her alternative career, because she knew the landlady at the White Horse in Norton who had also been at Church's. Her recruitment as relief bar staff coincided with a rather more personal aspect of her life. She had already met Maurice from Whilton in the socialising between the villages that has been a feature of country life for many generations, and now she had an accomplice, working a couple of years together at the White Horse, another five at the Bannaventa pub at Whilton Locks, and then 37 years at Duston Social Club, on duty most weekends and able to take holidays together since the shoe trade and engineering industry – Maurice being at British Timken – shared the same Northampton factory fortnight.

Altogether Gill's and Maurice's service to local hostelries totalled an extraordinary 50 years bar a few days, and along the way they made many friends. The Social Club made Gill a life member, and the handsome carriage clock marking a mere 25 years still ticks along at High Glen in Whilton.

As a youngster Gill was in the bell-ringing team at Brington with her younger sister and brother and friends Ann, Mary, Sue and Janet, and practice nights were rounded off at the Fox & Hounds in traditional style. This was the late 50s and early 60s and she was fully one of that young generation which knew how to have fun. She always enjoyed a cigarette, though she became a teetotaler – probably a wise move considering that long alternative career in waiting. She could certainly see the funny side of life. She was a Tom Jones fan, a devotee of 60s music, and enjoyed a show in London and holidays and breaks away, but deep down she was always a home-maker and liked to relax with a bit of reading or knitting and a cup of coffee, rarely tea.



Above all Gill was a gentle and caring person, looking after her elderly mum in Carey Cottage and then Maurice's parents, cooking and cleaning in addition to running her own well-run traditional home. High Glen, into which they moved as soon as they were married, was her castle, where she was to spend 43 years of happy marriage. Her photograph on the service sheet is perhaps quite typical: she didn't actually like being photographed very much, and to me at any rate her modesty and wry sense of humour come across rather well.

Gill was a thoughtful and loving aunt to 29 nieces and nephews. Imagine that on your birthday present list! She was dearly loved, and will be sorely missed by Maurice, by all this amazingly close and wonderful family, and by everyone who knew her.

Thank you to all in Whilton village who gave so generously in Christian Aid Week.



The total raised was £267.25

COMMUNITY DEFIBRILLATORS

You will hopefully have heard that the Parish Council are in the process of obtaining two community defibrillators. With the support of very kind donations from local businesses and groups, those defibrillators have now arrived and will shortly be installed in Whilton Village and Whilton Locks.

Hence, special thanks from the Parish Council must go to the local businesses and groups who kindly donated towards this venture to help fund these vital pieces of equipment.

They were:

Whilton Marina Whilton Carpets
Whilton Mill Whilton Gardening Club
Whilton Carol Singers

IN MEMORIAM
DAVID STODDART

We send our condolences to Jane and the family, following the death of David this spring.

David was 79 and he and Jane have lived in Whilton for some years, but he was already well-known for owning and breeding race horses.

He was teased by his friends after 1992, when he owned and bred the 1992 Grand National winner "Party Politics," but sold him to Patricia Thompson days before his Aintree triumph.

He bred and owned Christmas Gorse, who won the National Hunt Chase at the 2004 Cheltenham Festival under Marcus Armytage.

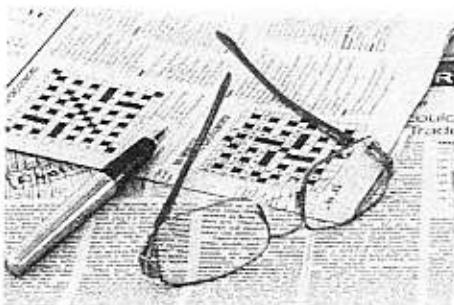


He also owned Private Views, successful in the Cathcart at Cheltenham 1988 with Brendan Powell in the saddle.

Nick Gaselee, who trained Party Politics along with Christmas Gorse and Private Views, said: "David originally had horses with David Morley and then had them with me. He sold Party Politics to Mrs Thompson two or three days before the National and got good money at the time."

"He was a successful owner-breeder of National Hunt horses and we were tremendous friends. He was great fun to train for and a charming man. We had a lot of fun and success together."

The memorial service will be held in Holy Cross Church, Daventry in June..



Did you know that daily newspapers are delivered to Whilton to be collected by householders in Whilton village?

If you are interested in using this service, please ring 01327 843319

SATURDAY 15TH JULY.



Tea

Coffee

Raffle

Home-made cakes



Come to the
COFFEE MORNING
at 7 Langton Rise
From 11 a.m. to 1 p.m.

All proceeds to support the
"Celebrating Courage: Captain Henry Reynolds"
event in September.

♪ **Whilton Warblers** ♪

I am writing this after coming down from the high of performing in the Northamptonshire Music festival this evening. Our musical director, Judit, had entered us into a non-competitive choir class and we have been practising hard for this for the last couple of months. As usual, it was something of a challenge to try to get it just right.

Afterwards we listened to the (extremely entertaining) adjudicator's conclusions with lots of helpful comments. She said she admired us for doing all four of our pieces acapella and congratulated us on our performance of each song.

Now we will have to start practising in earnest for our summer concert to be held in St Andrews on Friday 7th July at 7.30pm. Tickets will be available soon. The theme for this concert is Oh Happy Day!

This year marks the fifth anniversary of the choir and I expect we will have a 'bit of a do' to celebrate our achievements over the past five years. We have progressed to more and more challenging pieces since that first year.

As well as rehearsing for the summer concert some of the choir members are planning their annual choir trip to Opatya in Croatia in August. We are all looking forward to this.

Jane Drodge

WHILTON VILLAGE HALL 200 CLUB 2016/2017

FEBRUARY 2017

1 ST PRIZE	M Clements	207
2 ND PRIZE	T Price	080

MARCH 2017

1 ST PRIZE	E Bell	036
2 ND PRIZE	T Price	197

Congratulations to all the prize winners



SOCIAL LUNCHES

28TH FEBRUARY 2017 was another enjoyable get-together with lots of chat and laughter; this time we were celebrating Shrove Tuesday (Pancake Day).

Three hearty delicious chicken casseroles and one vegetarian dish were served with extra vegetables – just right for a late February day. Of course, for dessert we had PANCAKES. These were served with traditional lemon and sugar or the choice of mixed fruit, syrup or salted caramel and cream. Plum and apple crumbles and custard were there for 'seconds' Fruit juices and donated wine were available before and during the meal and tea, coffee and chocolate mints were served afterwards.

We were very sorry that Jane & Michael Thomas, who had been very involved with Whilton, were leaving us to be nearer their family near St Albans. They were presented with a lovely photo collage depicting life in Whilton in appreciation of all their help and interest over the past years.

23RD MAY 2017 was a warm, mostly sunny day when 17 of us sat down for our Spring Social Lunch. Beautiful ham was served with new potatoes and an amazing selection of salads together with a vegetarian tart. There were four desserts, two warm and two cold with custard and ice cream. They were very much enjoyed. Fruit juices were served before and during the meal and tea or coffee with chocolate mints completed the meal.

It was a happy social occasion and if you would like to join us in the future, **the next Social Lunch will be on Tuesday, 18th July in the village hall 12.30pm. The meal will be served at 1.00pm.**

A poem by Stan Henniker from the Locks

Fracking: Fact and fiction

Fracking's a word that's come amongst us
And has done so in the media's glare,
A word that by its very sound
Should be used with the utmost care.
But it's going to save our planet
By extracting shale gas from beneath our
feet,
It will take forty years or more until the
job's complete.
Consider now our planet with all its charm
and grace
Neatly balanced in the cosmos
With the right amount of gas to hold it in its
place.
Then here they come with their fracking
machines
To take out all the gas. Tell me!
Will the earth begin to shrivel, fall and twist
Like a deflating toy balloon? Perhaps.

MOVING ON...MOVING ON

The equator is now in the arctic
So we'll have to travel to the poles
To enjoy holidays on palm fringed beaches
And romantic moonlight strolls,
Or go whale watching where the desert was.
Would such a turn around create a panic,
Where Nomads become Eskimos, and Eskimos
nomadic?
Then anti-activists will say, "I told you so," with
voices of gloom.
"All we can see for the future is misery and
doom."
But in spite of all the protests
And regardless of you and me,
Fracking is going to happen,
We'll just have to wait and see.
Won't we?



Roughmoor Spinney

Our cover features a pathway in
Roughmoor Spinney. The latest work party
laid more of the granite chippings along
some of the paths. This has helped to
make to make a firmer base for walking in
this wet woodland.

The undergrowth and trees give shelter for
wildlife, which is encouraged by bird boxes
such as this one tucked among the ivy.

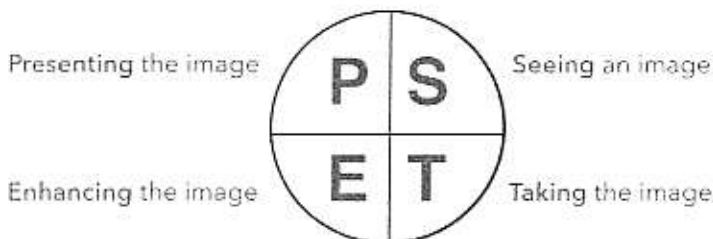
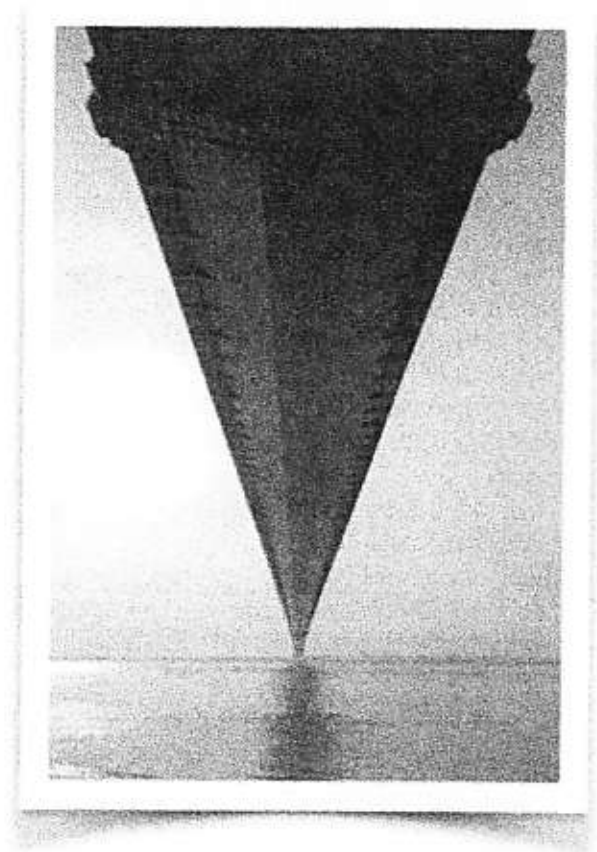
Ladies' Pot Luck Supper

The next Pot Luck Supper is planned for Friday 2nd June and an email invitation has
been sent to everyone on the distribution list. If you would like to be included in the
circulation for future suppers then please contact me by email: teresa@tlc-uk.co.uk

Aperture Photography Group

Learning a new skill takes time - just remember how long it took before driving a car felt completely natural. Photography is no different. To newcomers it comes as a shock to find that it isn't just a matter of pressing the shutter button and out pops a perfect photo - there's a lot more to it.

I have often been told by someone looking at one of my photos, "You must have a great camera". I am never too sure how to react to this type of remark. The inference is that the camera has done all of the hard work. I can tell you now, my camera has never gone out on its own and taken a single photograph. The fact is that the most important thing you need to take a good photograph is YOU. If you want to take better photographs, you need to learn four skills...



Over the last few months, we have been exploring each of these skills: at our meetings, in classroom training sessions and on outings. Although some members are suffering from, lets call it, growing pains, I always say: "Where there's a will there's a way." If you want to learn photography, then we can find a way to teach you.

So, whether you are using an iPhone, a point and shoot camera or a big wood and brass camera with bellows, you can always learn something. We are fortunate in having a mix of newcomers and more more experienced photographers in the group. The more experienced members are all happy to share their knowledge.

Come along to one of our meetings and see what it's like - you will be made very welcome. Meetings are held fortnightly at the Saracen's Head in Little Brington at 8pm.

In the coming weeks we will be having a studio session, talking about composition and seeing how to enhance your photographs on your computer. We are also planning outings to Castle Ashby and Birmingham.

The dates of our forthcoming meetings are: June 8th & 22nd, July 6th & 20th, August 3rd, 17th & 31st. Call or email me if you want any further information.



Neil Phillips
Tel: 01327 844182

Email: neiljphillips@mac.com

Letter to the Editors

Dear Editors,

The first day of Spring this year was marked by cold and wet weather, however, it was considerably brightened by the glorious display of daffodils planted in the verge beyond Hill Top Farm. I would like to express my appreciation, via the newsletter, for the efforts of Whilton Gardeners' Association members who planted the bulbs last Autumn in memory of our dear, late friend, Olive Bardill-Tillott who was also an enthusiastic WGA member and gardener.

It was lovely to be reminded of Olive by such an uplifting sight each time I entered or left the village and the daffodils perfectly reflected Olive's bright and cheerful outlook on life even when she was very poorly. I suspect Olive would have been as thrilled by the sight but, being Olive, she would have made a joke about it.

Once again, thank you WGA for such a wonderful idea and for the resultant display.

From a grateful Whilton resident.

Brington and Whilton Pre-School

Whilton Village Hall NN11 2NN

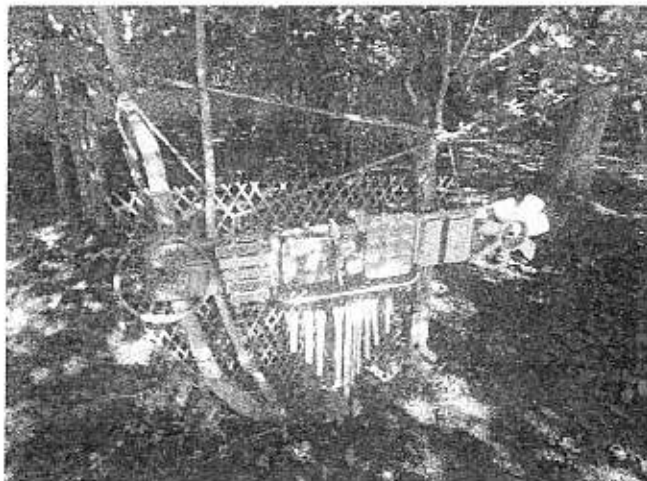
www.bringtonandwhiltonpreschool.org.uk

Firstly may we thank all who supported our Easter Egg Hunt, we made a fantastic £250 and would like to thank St Mary's Church for letting us use the Church and to Jill for providing us with refreshments. Also thank you for all who have collected Sainsbury's vouchers for us – they have finished now and we are in the process of counting them to submit our order.

We continue to race through the school year, who knows where it is going! We have been using the Spinney when we can and have looked at all aspects of Personal, Social and Emotional Development, from manners to good health and welfare. This term we have a science theme and are looking at magnets, reflection, weighing and measuring to name a few topics.

We also have had some stay and play sessions where Brington and Harlestone Mums and Tots have joined us for the session. We are all looking ahead to the summer term when we shall be visiting Brington School for some transition sessions and also visiting Forest School and spending more of our time out in the Spinney – so a busy term ahead of us.

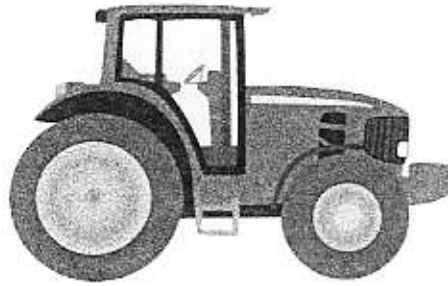
Throughout this term we have had lots of prospective parents visiting us, so the number of children in September should be good. We would suggest if you have a child who will be 2 years old soon and you would like them to attend, to get in touch with Jenny 01604 770083 or email through our website, as soon as possible so we can arrange a visit and give you more information.



An outdoor "music centre" made from recycled items in the Pre_School area of Roughmoor Spinney.

Farm Riddles

I have 4 stomachs.
I live in a field.
I like to chew grass.
What am I?

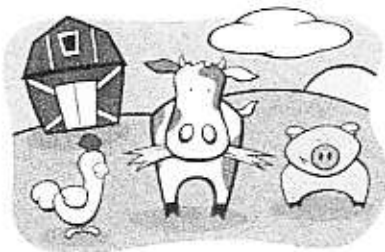


Despite rumours, I am actually very clean.
I like to roll around in mud.
I live in a sty.
What am I?

I am very fast.
I eat hay.
I live in a stable.
What am I?

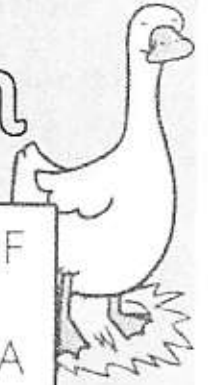
I live near water.
I waddle when I walk.
Humans like to feed me bread in parks!
What am I?

I live in a flock.
I eat grass.
My coat is very fluffy and warm.
What am I?



I am an important source of protein for humans.
I have wings.
I make clucking noises.
What am I?

Farm Wordsearch

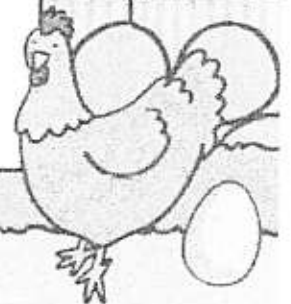


G	K	E	O	Q	Y	X	J	H	F
O	S	E	G	O	O	S	E	A	A
A	H	D	S	P	F	F	E	Y	R
T	E	O	H	O	L	A	B	S	M
O	E	N	I	N	A	D	H	T	E
O	P	K	B	D	R	N	U	A	R
K	S	E	A	H	E	J	G	C	Z
E	U	Y	R	Y	S	T	A	K	K
N	G	S	N	D	Y	A	H	N	A
S	E	G	P	H	R	I	O	S	B



GOAT
GOOSE
POND
BARN
DUCK

SHEEP
DONKEY
FARMER
EGG
HAYSTACK



SMOKING

and SIGHT LOSS



**Our Mobile Sight Centre hits the road at the end of June with a very special message...
SMOKING IS BAD FOR YOUR EYESIGHT!!**



The week of 26 June to 2 July is "Macular Week", promoted by the national Macular Society and sight loss organisations across the country. Smoking is the big issue under the spotlight in the 2017 campaign.

Most people know that smoking is a major health hazard. But less well known is that it can cause blindness.

Smokers are four times more likely than non-smokers to develop age-related macular degeneration (AMD), the most common cause of sight loss in the UK. Smokers with a genetic tendency to AMD are eight times more susceptible.

There is evidence to suggest that smokers under-going treatment for wet AMD do not respond as well as non-smokers. Passive smoking can also increase the risk of getting AMD.

There is evidence to suggest that smokers under-going treatment for wet AMD do not respond as well as non-smokers. Passive smoking can also increase the risk of getting AMD.

Stop Smoking Advisors will be on board the Mobile Sight Centre offering Carbon Monoxide checks and stop-smoking advice and support during this week.

During Macular Week visit NAB's Mobile Sight Centre when it visits:

Kettering

High St. near Clock Tower
Tues 27th June: 10am - 3pm

Daventry

New St. near Shopmobility
Wed 28th June: 10am - 1pm

Northampton

Market Square
Thur 29th June: 10am - 3pm

For more support on Stop Smoking call First for Wellbeing: 0300 126 5000

**Northamptonshire Association for the Blind
Helpline: 01604 719193 • www.nab.org.uk**

The Whilton Newsletter is published quarterly and circulated free to every household within the parish boundary. The costs are met by the Parish Council.

The Editors are:

- Anthea Hiscock, Langton House, Main Street.
Telephone: 01327 843319.
e-mail: anthea.hiscock@tiscali.co.uk
- Jon Brierley
e-mail: Jbrierley1@aol.com
- Sarah Thomas
e-mail: sarahlouthomas@icloud.com

- ❖ The Editors welcome material for the Newsletter. If possible, please send your contribution by e-mail. If you do not have a computer, the editors will be happy to type handwritten articles for you.
- ❖ The next issue will be the Autumn Edition, covering September – November 2017. The last date for contributions will be 20th August 2017.
- ❖ The Newsletter is published quarterly, but Whilton also has a website: www.whilton-village.net. This contains details of the organizations in the parish, previous Parish Council Minutes and Newsletters and a Picture Gallery. It also has latest news and updates on parish events.
- ❖ If you would like to advertise your local business, flyers can be delivered to every household in the parish with the Newsletter at a small charge. For information please contact one of the editors.

**WHAT'S ON IN WHILTON
SUMMER 2017**

DAY	DATE	TIME	PLACE	EVENT
Fri	2 June			Pot Luck Supper
Sun	4 June	11 a.m.	Church	Benefice Sung Eucharist
Wed	7 June	7.30 p.m.	Village Hall	Whilton Gardeners Association
Fri	9 June	Meet at 6.45 p.m.	Leave from Village Green	Local History Society outing to talk at Holy Cross Church, Daventry
Sun	11 June	6 p.m.	Church	Evening Communion
Sun	25 June	11 a.m.	Church	Worship for All
Fri	7 July	7.30 p.m.	Church	Whilton Warblers Summer Concert
Wed	12 July	7.30 p.m.	Village Hall	Parish Council
Sat	15 July	11 a.m. – 1 p.m.	7 Langton Rise	Coffee morning
Tues	18 July	12.30 for 1 p.m.	Village Hall	Social Lunch
Thurs	27 July	Evening		Gardeners Association outing to Cottesbrooke Hall
Wed	2 Aug	Evening		Whilton Open Gardens
Sat/Sun	12-13 Aug	Night time	Outdoors	Perseids meteor shower
Fri	1 Sept	7.30 p.m.	Village Hall	Quiz

Regular weekly events include:

- BRINGTON AND WHILTON PRE-SCHOOL in the Village Hall:
Term time: Mon, Wed, Fri: 9.30 a.m. – 1 p.m. and Mon, Wed 1 – 3 p.m. for over 3's.
- BELL RINGING at the Church: Mon: 7.30 p.m. - 9 p.m.
For further information please contact Justin Baker 844263 or Janet Bowers 842851
- WHILTON WARBLERS CHOIR in the Church: Tuesdays in term time: 7.15 for 7.30 p.m.
- For CHURCH SERVICES after June please see notice board.
- The APERTURE PHOTOGRAPHY GROUP meets at the Saracen's Head fortnightly: see article.