

WHILTON SUMMER NEWSLETTER



A Whilton garden under the rainbow

JUNE – AUGUST 2020

June - August 2020

Letter from the Editors

Welcome to the Summer Newsletter in the year of Coronavirus, which has dominated our thoughts and behaviour over the last quarter year.

This is the first edition we remember in which will have no mention of plans for gatherings and eating in groups. The Coronavirus has brought changes to our way of life and our expectations.

As activities have had to cease or change, many villagers have concerns for their families and friends, who may be in the caring and health professions or in essential services, who may be vulnerable. Amid these difficulties the residents of Whilton are beginning to accommodate themselves to new circumstances.

Although our regular societies have not been meeting, some have been able to develop in new ways and the village has risen to a number of challenges. We hope you will enjoy sharing the news about this and we especially thank Neil Philips for sharing the photos he took on 8th May. You will find these scattered through this edition with a few by other photographers.

We can give no firm information about future events, but we hope you are able to enjoy the warm months of the coming summer in Whilton.



The Editors

Over the last 3 months there have been weekly challenges issued in aid of the Village Hall. Some of the responses, particularly the limericks, are scattered through this issue and may make you smile. The cover shows Jonathan and Sue Hanslip's entry for Challenge 10.

WHILTON PARISH COUNCIL

The Whilton Parish has faced a number of interesting and challenging issues over the last few months. The Covid 19 crisis saw us all go into lockdown, with some going into full isolation with suspected Covid 19 symptoms. But the period also saw many members of the Parish pull together to help others, bringing about a real community spirit. So what has your Parish Council been doing during all of this?

- **Covid 19 Support Group.** Just after the lockdown was announced in March the Parish Council decided to pull together a Whilton Support Group of volunteers to help others, who weren't able to get out themselves, with food shopping, fetching prescriptions etc. Starting off as a small venture with a few volunteers, it quickly grew to over 15 people as others offered their services, all co-ordinated through Jane Bunce (01327 842636) in the village, and it is still operating for anyone who is in isolation or needs assistance. So a big thank you to all those who stepped forward to assist.

- **Whilton and Whilton Locks E-Mail Distribution List.** The Parish e-mail distribution list is a closed list to keep people informed of the latest issues and information concerning the Parish. In the current health crisis the list really proved its worth in communicating with the Parish when everyone was in lockdown or full isolation, with details such as the above Support Group, details of a wider support group in Northamptonshire, and details of local Retailers offering their services and deliveries to the Parish. If you are interested in being added to the list for the Parish to find out what is going on in your Parish, please send your e-mail address to clerk@whiltonpc.co.uk.

- **Gigaclear Installation in the Parish.** After 18 months of delays, the Gigaclear superfast broadband network has finally been installed in the Parish, although it was a close call in April when they tried to delay the programme for a further 3 months to July because they didn't appreciate how narrow Main Street was. Due to red-tape and bureaucracy, they wanted to close the road and needed to notify such for 3 months prior. I then discussed the issues with the Gigaclear team and said that I would get the vehicles along Main Street moved, so that they could install their network. So a big thank you to everyone who moved their vehicles at short notice to allow the team to do their work. Also a big thanks to Gordon and Mary Emery for allowing everyone to park their vehicles in their farm yard. Between us all, the community pulled together once again to get the long awaited Gigaclear network installed through the Parish.

- **Connecting to the Gigaclear Network – Hints and Tips.** Some members of the Parish are starting to be connected to the Gigaclear network, so I thought it would be useful to put together a few hints and tips of how to get the best deal from them.
 - **Making the Service Live.** At the time of writing (early June), Gigaclear have made the service live to the first 40 houses in Whilton, and over the coming weeks, will make it live in stages to the rest of Whilton and Whilton Locks.

- **Contracts.** Gigaclear are contacting individuals directly to connect to the service, first working through those who have registered an interest on their website at www.Gigaclear.com, and then contacting others via mail shots and advertising. Due to the Covid 19 crisis, there is a long wait between booking the service, and actually having the installation work done at your property – 5 to 6 weeks appears to be the normal duration. However, a loophole is to ask to be put on their cancellations list. Of the installations thus far in the Parish, this is the route that has been used where you will get a phone call in the morning asking if their engineers can do the installation that afternoon following a cancelled appointment. Also note, that if they call and you don't answer, they will not call you back or leave a message, but just carry on down their list. So it is worth calling them back if you have a missed call.

- **Packages.** The packages that Gigaclear offer can be found at www.Gigaclear.com/home-broadband. Some of the details are a little confusing, but each package will come with a standard router which also broadcasts wifi around your house. If you want a wifi extender, or what they call a mesh system, the 300 and 900 mbps packages come with an additional router as part of the package which can be used to extend your wifi into other areas of your home. You can also get an additional router again for an extra £5 per month on top of your package costs if needed.

- **Discounts.** Through social media, there have been various discount offers from Gigaclear, and these can be found at www.rural.gigaclear.com. I'm also hearing stories that if you are still under contract with your current provider, Gigaclear will hold and honour any current discount offer for 3 months if you agree a deal now. (eg. You agree to take Gigaclear now, but don't want to be connected to the network for 3 months. So your contract starts in 3 months time.)

- **Irresponsible Dog Owners Around Whilton Village.** The problem of dogs fouling through the village, and irresponsible owners failing to clean it up afterwards, appears to now be reducing in the village following a previous increase in incidents. So thank you to those dog owners who were proactive in dealing with this issue. However, it is still an issue that we need to keep on top of. So a continued effort from all is still required to keep the Parish clean and safe. As long as the dog mess is bagged, it can be put into any bin to be disposed of. Also, in addition to the dedicated dog mess bin at the bottom of Buckby Lane, the Parish Council are in the process of having a further bin installed at the Manor Lane / Brington Lane junction at the bottom of the village.

- **Speeding through the Parish.** Whilst the Parish Council successfully reduced the speed limit through Whilton Locks down to 40 mph, we pushed again last year and the Highways Agency have now agreed to reduce it further down to 30 mph later this year.

In Whilton village, the official speed limit is 30 mph, and the Parish Council have made numerous attempts to reduce it down to 20 mph, thus far being unsuccessful. Through various speed awareness activities last year, we identified that the majority of the traffic through the village kept below the 30 mph limit, which makes the village safer for all. However, over the last few months, it has been noted that some vehicles passing through the village have started to travel in excess of the speed limit, some far in excess, particularly along the stretch from the allotments up the hill out of the village towards Daventry. This creates a very dangerous situation along Main Street, especially given how narrow it is in places, and also the fact that we have a number of elderly residents out and about around the village, as well as a number of pets and horses. So we all need to slow down again through our Parish. The Parish Council are also looking to do another series of speed awareness activities in the Parish, where offenders will be reported to the Police for further action.

- **Daventry Area Community Transport (DACT) Service.** The Parish Council recently worked jointly with the Brington Parish Council to successfully establish a DACT bus service for residents to provide regular trips to Daventry and Northampton. However, with the current health crisis, the decision was taken to cancel the service until further notice. Further updates will be notified on the village notice board and through the Parish e-mail distribution list.
- **Parish Council Vacant Position.** Due to a resignation, the Whilton Parish Council currently has a vacant position, primarily as the Treasurer for the Council. If anyone would like to put themselves forward for consideration for role, please contact the Parish Council Clerk at clerk@whiltonpc.co.uk.
- **The Spinney.** Some of you may be aware that that we have a special place towards the bottom of Whilton village known as The Spinney, comprising of 2.25 acres of mainly wet woodland, with several walkways throughout the area. It was gifted to the people of Whilton as a millennium gift and is free for anyone to visit. The management of the area now comes under the Parish Council, where a separate work party of volunteers are responsible for the general maintenance of the area and the completion of safety checks on a monthly basis. However, following periods of inclement weather, there can be occasions where trees or branches may have fallen and have yet to be cleared away. Hence, I would urge you all to visit and enjoy the Spinney, but also to be vigilant of any hazards that may be in the area. If you do notice anything that may be a danger, please report it to the Parish Council clerk at clerk@whiltonpc.co.uk.
- **Village Litter Pick.** With the current health crisis, the Parish Council took the decision to cancel the last village litter pick that was due to be held on Saturday 28 March 2020. All being well, we will look to plan the next litter pick event later in the year where we can gather together once again to collectively clean up the village.

- **Defibrillators.** There are 2 defibrillators located within the Parish - in Whilton (by the Village Hall) and Whilton Locks (next to the BT phone box on the canal bridge). Each cabinet is locked with a code, which can be obtained from the emergency services when you dial 999 should they be required.
- **Whilton Parish Council Website.** The Whilton Parish Council also do have a website at <http://www.parish-council.com/whilton/> which details all the work that they are doing for the community, together with any notices of interest for the Parish. There are also details of who your councillors are, and how to contact them about any matters relating to the Parish. Of note, the e-mail address is councillors@whiltonpc.co.uk. The Council also hold a regular meeting in the Whilton Village Hall every 2 months, which is open to the public to attend and raise any issues. However, in the current crisis, all meetings are being held virtually, to which everyone is still invited from the comfort of their own homes.

Randal Smith

Rose Briar

Chair of the Whilton Parish Council

**“My favourite spot in Whilton, expressed in verse by Sheena Andrews,
as part of the Whilton Challenge.**

*Tables laid
Handshakes made*

*Goodies raffled
Quizzers baffled*

*Smiling faces
Take your places*

*Dishes cleared
Ending near 'd*

*Food galore
Waistlines soar*

*Tables folded
Menfolk scolded*

*Drinks enjoyed
Joy unalloyed*

*Bags all packed
Chairs are stacked*

*Gossip shared
'Volunteers' snared*

*All is well
So say farewell*

*Parcels passed
A gift at last!*

*But haste ye back
We love the craic!*

*Songs sung loud
Friendships vowed*

WHILTON VILLAGE HALL CV COMMUNITY CHALLENGE 2020

On 1st April the first of 12 weekly Challenges were issued to the community. There has been a charge for this which supports the Village Hall. The Challenges are not yet complete, but they have revealed interesting talents among our residents.

The winners of the first Challenge were Teresa and Ian Woods, and Teresa has sent this message to the Newsletter:

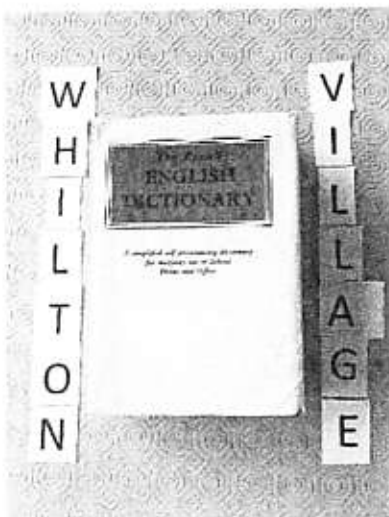
To assist us in the first CV challenge Ian and I used an old dictionary hoping that it would suggest some rare words no longer in common parlance and indeed it did...though not all of them were valid answers in this instance (to make words from Whilton village).

My two favourites were *TATTERDEMALION*

rag : *pl.* rags.
TATTERDEMALION (-ter-de-mal'-yun), *n.* a ragged fellow.
TATTLE ('l), *v.i.* to talk idly; tell tales or secrets.
TATTOO (ta-too'), *n.* a beat of drum :

and *LAMBREQUIN*.

LAMBKIN ('kin), *n.* a little lamb.
LAMBREQUIN ('bre-kin), *n.* a festooned drapery.



Over the years I've made a few window dressings that would fall into the lambrequin category and the least said about tatterdemalion the better.

Anyway, we enjoyed (and won) the challenge and even Norman the cat attempted to help though we had to point out that his suggestions of "miaow" and "purr" didn't help.

The 75th Anniversary of VE Day

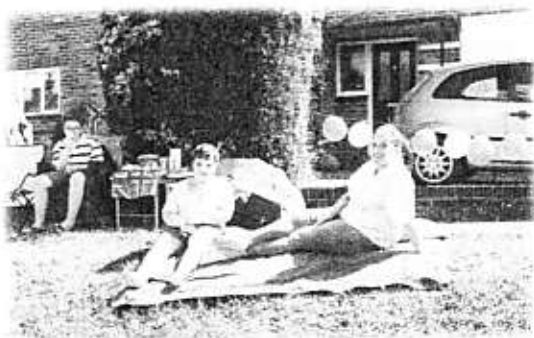
Friday 8th May was set aside this year to remember the 75th Anniversary of Victory in Europe Day in 1945. In common with many other communities our plans had to be scaled down. There could be no social gathering for a meal. Instead the residents of Whilton combined their efforts to make this a truly memorable event in the midst of lock-down.

The weather was glorious and probably two thirds of the village entered into the party spirit. The fronts of houses and gardens were decorated in whatever people had to hand, simple and elaborate meals were eaten in front gardens and villagers strolled around. This had a particular significance because the majority of us were keeping inside and not mixing socially as instructed under the coronavirus emergency. On this day Whilton had a festive atmosphere.

There were picnic tables and folding chairs



There were rugs and cushions on the grass



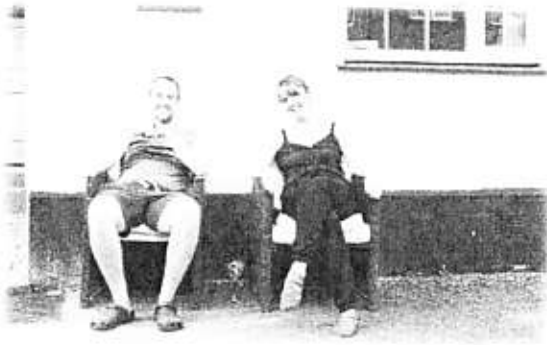
There were parents, children and young people



There were balloons and bunting at the top of the village



There was time to walk, or sit, or stand



There were Union Jacks



There were summer hats and dresses



Whilton Community Challenge suggestions for collective nouns:

A collection of Whilton gardeners: *Plotters, a Pleasure, a Compost*

A collection of self-isolating villagers: *a Coronet, a Haven*

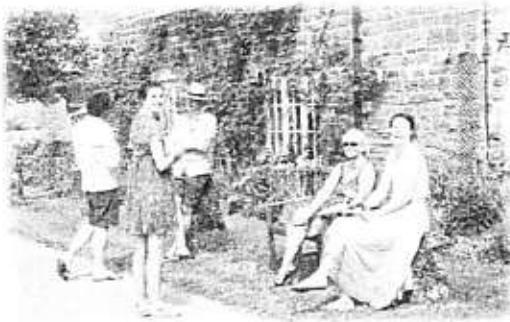
There were shorts



There were glasses of wine, cups of tea and stories to share



There were balloons and bunting



**There were cake stands
and flowers in pots and even
a line of patriotic clothes**



And there were other villagers too, who moved around so much they evaded the photographers! Most of the photos here were taken by Neil Phillips and we thank him for taking this opportunity to record the day.

In 2020 we made this a day to remember. 80 years ago there was no triumphant jubilation here. The children had a holiday from school, but the adults were in no mood for celebration. Joyce Bristow, then Joyce Poole at the Plough, remembers:

“When the war ended we were not allowed any celebration and only knew what was announced on the radio.”

Four young men from the parish had been killed. Others had not come home. The war was not over yet for those in the Far East. Families here were tired and anxious. Whilton was sombre.

WHILTON LOCAL HISTORY SOCIETY

In common with most other organisations, our society has had to cancel and postpone activities. The end of March was intended to be our launch of the book, "The mystery of the Whilton Stone", in May we were unable to hold the meeting at which Graham McKechnie was to talk about The Saints and the First World War, and we have postponed our July guided walk in Leamington, until another year.

It was not possible to hold a guided Second World War walk through Whilton on VE Day, but those taking part in the Whilton Challenge were able to follow an individual trail with multi-choice questions based on Whilton at that period.

The autumn sessions remain uncertain. October will mark 80 years since the death of Percy Fleming of the Locks, the first of the Whilton men to die in the Second World War.

It now seems possible that our planned weekend of activity will not take place in October, but we do intend to provide information about Percy Fleming and his friends, and about Whilton in the Second World War.

It is too early to make precise decisions, but members will be kept informed and we intend to share what is happening through our website: www.whiltonlhs.org.

Meanwhile I am planning to write more about education in Whilton in the past. If you have photos or information about Whilton School or Holborn House School I am always interested! I hope to be able to share this too in due course.

Anthea Hiscock

In memoriam....Michael Thomas.

We send our condolences to Jane Thomas, formerly of Langton Rise, on hearing that Michael Thomas passed away on 5th June 2020.

Michael and Jane lived in Whilton until just over 3 years ago when they moved to Redbourn to be nearer their family as Michael's health began to decline.

During their years in Whilton, Michael served as a Parish Councillor and was a regular supporter of Social Lunches and the Tuesday Chats! He was a very proud Welshman who loved his golf, cricket and rugby and he enjoyed a droll sense of humour with a twinkle in his eye and many a witty one-liner.



**Our buildings are closed,
but the Church is still open!**

Stay connected and join us by
phone and internet during
lockdown.

Sunday service
at 10am &

Wednesday morning
prayer at 9:30am
via conference call.

For the cost of a local call,
dial 03303360036 and enter PIN 268048

Monday coffee morning at 10:30
via Zoom – email Rev Andrea for a link.

The Spencer Benefice of Churches
Rector: Rev Andrea Watkins
01604771338
revawat@gmail.com



<https://www.facebook.com/ourgroupofchurches>

Stay
Connected

CHURCH UPDATE

There is very little news from St Andrews. Although it seems that churches will be allowed to open for private prayer soon, the latest information is that access must be supervised and with full cleaning after a visit; so for the moment and until we have more practical operating instructions the church building will have to remain closed. We will keep you updated. We are maintaining contact through confracall services and a weekly video chat. If you are interested details are in the advert.

One thing that has proved popular during lockdown is the bookshelf in the church porch which is like a mini charity book shop and reflects the wide range of reading interests of villagers. Currently there is also a selection of History, Photographic and Wine magazines plus a huge stack of National Geographic back issues.

You can also use it like a lending library to swap books. Fresh stock is always welcome so bring some of your books down and check out what is available.

Hopefully here will be more to report in the next Newsletter!

Jon Brierley

Linda Treacy

Bell Ringing Stopped. Yes but, No but....

The Whilton Bell ringers have been stopped from ringing the Church bells due to the covid-19 pandemic. We look forward to being able to get back to 'pulling our ropes' as soon as we are able. In the meantime – as we've been unable to ring properly, we've taken to the virtual world. Yes, ringing on-line with people at a distance that could be on the other side of the world! We have taken to try and keep our minds active by using the web site <https://ringingroom.com/>.

Whilst ringingroom is great to ring – it doesn't allow much communication, so we have started a simultaneous Zoom Virtual Conference at the same time. You can see us ringing with some Long Buckby ringers in the Whilton virtual tower.



You can access the Whilton ringing room anytime you like using <https://ringingroom.com/845716923>. (845716923 is our Whilton virtual tower). You will need to register yourself if you want to have a pull of a rope and make a sound - <https://ringingroom.com/authenticate>. This is once only and you can then log in to any tower – perhaps to ring at St Paul's!

If you would like to join us in our virtual ringing environment and have a go with others at the same time, please contact me for times and zoom details.

Justin Baker (j.t@lineone.net)

*See all the men from Gigaclear
Diggin' and fillin' all the year
From Locks to Whilton,
Causing commotion,
Wow! Super Broad Band is here!*

J & B Melling

Lockdown Thank You

During lock-down there have been many acts of kindness, sensitivity and thoughtfulness, especially for those trapped in the village. Jane Bunce has organised a group to shop and collect prescriptions for those who could not leave home and besides this, the numerous unofficial helpful acts of neighbours and friends are on-going.

Those who are the beneficiaries would like to say thank you. We are all experiencing a refreshing community spirit. Although this is not new to Whilton, the community working together can be very clearly seen at present.

Janet and Ken Bowers would particularly like to say how well they have been looked after by their neighbours, Sally and Roger Toone, with help from Anne Heeley and Theresa Baker too.

We have also received this letter:

On behalf of Richard and myself, I would like to say thank you to everyone who has gone out of their way during the last 2/3 months, to be thoughtful and supportive. In particular we'd like to thank our immediate neighbours Emma at The Gardens and Anthea at Rose Briar for their kindnesses and Mark and Sarah in Brington Lane for bringing us shopping and other little goodies.

The book exchange in the church has topped up my dwindling pile of books to read and a special thank you goes to the person in the village who is a Kate Atkinson fan. I pounced on the two which appeared a few weeks ago, neither of which I had read.

We both count ourselves very lucky to be living in Whilton at such a challenging and strange time and that's because of the other people who live here.

Thank you.

*Ann
Langton Cottage*

And another letter received:

A huge thank you to Anthea and her team for making the most of the Lockdown opportunity to provide the Village Challenge. You have encouraged us to be poetic, to ponder, walk, enquire, succeed and occasionally to recall what day of the week it is: reminding us how much we enjoy the privilege of living in Whilton.

We have also been asked to thank Roy Haynes for his continued mowing in the churchyard - thoughtfully carried out and despite everything else going on - including his beekeeping.

As editors we thoroughly endorse this note.

These are people who have been named to the editors, but we know there are many others who could have been mentioned.

On behalf of the village, we say thank you.

Teresa Leadbetter sent this message to the Editors following the 75th VE Day celebrations:

I wanted to say how much I enjoyed the day. The joy of being out and celebrating with others, at a distance, and in the sunshine was such a welcome change. People had made such an effort with flags and bunting and even dressing up (in period dress and union flag suits for instance). There was the sound of 1940s big band music in the air, medals and artefacts from relations who had been involved in the war were being proudly displayed.

The whole effect was so uplifting in these strange times. What a wonderful village we live in.

SPINNEY

*In Whilton a woman called Winnie,
Fell very in love with the spinney,
She liked trees and the pond
And of flowers she was fond
But eating them made her too skinny*

LOCKS

*There was a young boy from the Locks,
Who made a small boat from a box,
Put together with wires.
It capsized at The Shires,
He survived with inflatable socks.*

WHILTON

*There was a young man name of Birch,
Who wanted to climb Whilton Church
He hadn't the power
To climb up the tower.
So sat on the porch as a perch.
Shirley Brown (the winner)*

Whilton Allotment Gardeners



Do you remember February? The wettest on record since 1862 with three dramatic storms Ciara, Dennis and Jorge. All allotment holders were keen to make a start preparing for Spring sowings but the ground was far too cloggy. Unsuitable to even walk on. Then came March and with it better weather and Corona virus. Lockdown !

Aware that other villagers did not have such a safe outlet for exercise and constructive use of pent up energy we held back not wishing to spend too long on our plots but when we did go there we were able to interact while maintaining safe social distancing. And haven't we all worked hard, enjoying the lengthening daylight and warmth. Joy.

Being members of The National Allotment Society, incidentally based in Corby, we were able to access guidance how to sensibly and sensitively use our plots with advice on hand sanitizing and keeping safe . Despite anxiety in many areas of the UK we were encouraged by this to take regular exercise with the added bonus of producing food for the future ,whatever that might be.

I also found helpful and amusing Facebook groups such as "Allotment Junkies " and "Allotment & Vegetable Growers" which in other times I would not have had time to join or read . This led onto "Growing Vegetables in Containers" and "Square Foot Gardening UK".

Now we can all take unlimited exercise but at the start of Lockdown allotment holders in other areas were locked out by authority, forbidden to drive to their plots and had a host of other restrictions. Some had thefts from plots and sheds plus wilful damage.

Our local Pre school are only just now having the benefit of an open space to visit and learn in which in normal times they would have had throughout the Spring. When you remember the good weather we have benefitted from this is particularly sad.

What for the future in the "New Normal"? If we had more plots-on another site- would more village folk take them on for a whole range of laudable and plausible reasons? Enjoying the benefits this small group of dedicated people have had because of the COVID19 crisis? I believe all current allotmenters would have worked on their plots but not as diligently or for as long . There would have been less enthusiasm and time .We would have been away for weekends, holidays, at work and visiting family and friends.



For many weeks we have not been able or allowed to undertake these diverting social activities.

Praise be for allotments !

♪♪ WHILTON WARBLERS ♪♪

"It is over three months since the Whilton Warblers came together on a Tuesday evening to sing. We know that our supporters are as disappointed as we are that there will be no summer concert this year. Hopefully, in the not too distant future, as life slowly gets back to normal, we can start rehearsing with an eye on the Christmas concert.

Some members have been keeping in practice by participating in Zoom sessions. Others have been working hard making masks and scrubs for the NHS.

All members trust you have a safe summer and look forward to seeing you again soon.

*Locked down for fear of infection
Whilton folk need introspection
On hearing the news
And other folks' views
The Village Hall now they must shun.*

*A very old man called Vinny
Walked once a day to the Spinney
Found no resistance
Keeping his distance
By week's end he was real skinny.
The Mellings*

Aperture Photography Group

"It was the best of times, it was the worst of times ... it was the season of Light, it was the season of Darkness, it was the spring of hope, it was the winter of despair, we had everything before us, we had nothing before us."

Charles Dickens could almost have been describing the last couple of months when he wrote these lines from A Tale of Two Cities. For some people in this country there has been great sadness and loss, whilst for many of us in Whilton, it has been a return to quieter times. Something similar happened for the Aperture Photography Group.

In late March we were forced to cancel a planned workshop in Dorset and then our planned programme of meetings and outings. However, it did become a spring of hope as we discovered how to hold our meetings online. Most of us had never heard of Zoom, but now it has become the platform for moving from fortnightly meetings to weekly meetings. We have been able to secure the services of some of the country's best photographers at much reduced prices and we now have a very full and varied programme in place which will keep us going for several months to come.

What will happen going forward for us? At this stage it is difficult to see how we can go back to meetings in The Saracens Head; the room is too small to enable our members to gather and be able to maintain the required social distance. So it could be that we will be running online meetings for some considerable time. That would probably have caused us some concern several weeks ago, but we are now starting to hear members say they prefer meeting online - who would have thought it?

So what of photography in these challenging times? Well, it has not been easy with the restrictions on our movements. We have set a photo assignment for the members to take photos of flowers, which should be easy given the time of the year. The other event which had to be recorded for posterity was the celebration of VE Day in Whilton. Unusual for this country, the day was fine and many residents took to their front gardens to celebrate with food and drink and to share a conversation with their friends.

If you would like more information about the group, check out our website (www.aperturephotographygroup.co.uk), or contact Neil Phillips on 01327 844182 or via email (neilp.apg@gmail.com).

A lonely horse in the spinney
Let out a pitiful whinny
The word went around
A suitor was found
Now he's befriended a hinny

I & T Woods

WHILTON VILLAGE HALL

200 CLUB

There have been no activities in the Village Hall since Lockdown began. The Pre-school have recently resumed their sessions, but there appears little chance that other groups will be able to return for some time.

The subscriptions for this year's 200 Club have been received and it was decided to hold the first draw. Until now draws have always taken place at a public meeting, but this was not possible in June. Instead 4 members of the Management Group met in the garden of the treasurer, Shirley Brown, and witnessed each other drawing out the tokens.

Congratulations to the winners for April and May, as follows:

April

1st prize	151	Maurice Clements
2nd prize	49	Sarah and Mark Hampson

May

1st prize	40	Tricia Wood
2nd prize	171	Ian Hathaway

The Last Social Lunch

One of the last events in the Village Hall was the Social Lunch, at which we enjoyed cottage and vegetarian pie, followed by rhubarb crumble, chocolate roulade and Eve's plum pudding. This was remembered as an especially relaxed social meal – perhaps we knew there would not be another for a long time!

WHILTON

*There was an old man from Whilton
Who walked round town with his kilt on
When the wind did blow
His jewels would show
And the locals he would frighten I & T Woods*

Miles' Gardening Services

Big Garden? Not enough time in the day? Don't like Gardening?

I can do your garden for you!

- ✓ Lawn Mowing
- ✓ Petrol Strimming
- ✓ Hedge Trimming
- ✓ Fence Repair
- ✓ Fence Painting
- ✓ Weeding
- ✓ Weed and Feed (Lawn Care)
- ✓ Planting
- ✓ Car Wash
- ✓ Any other job you can think of!



All tools, fuel and equipment can be provided if necessary
Use me for regular or one-off jobs
Please get in contact!

Mobile: 07543 630604

Email: milesfebaker@gmail.com

Address: Pentimore House, Manor Lane, Whilton, Daventry

.....

*There was young man from Whilton
Who smelled rather strongly of Stilton
His fiancée said please
Stop bathing in cheese
Or you I will soon be a-jiltin'.*

*Said the young lady from round 'ere
'Me duck, please don't even come near'.
'I'll not kiss in your Mini
Nor do more in the Spinney.
Canoodle a ripe cheddar? No fear!*

Sheena Andrews

*'Now' said the same swain from these parts
'Let's still be forever sweethearts
Though my locks will just fester
If not shampooed in Red Leicester
And my elbows will miss the brie tarts'.*

*A young lady from Whilton Locks
Was so short she added some blocks
To slippers and shoes
But her feet they bruised
So she purchased some platform clogs.*

Teresa and Ian Woods

Your waste and recycling calendar June/July 2020

Your collection day is **WEDNESDAY**



If you have subscribed

June 2020				
3	F	R	W	
10	F			G
17	F	R		
24	F		W	G

July 2020				
1	F	R		
8	F			G
15	F	R	W	
22	F			G
29	F	R		

Please put out your bins by 6.30am on your collection day.

Changes to your collections from August 2020

We're making changes to waste and recycling collections in August. Your bin day and the service you receive will stay the same, but there may be a change to your collection pattern. A new annual calendar with your new collection pattern will be sent to you before the changes, so please look out for this.

Download our free app

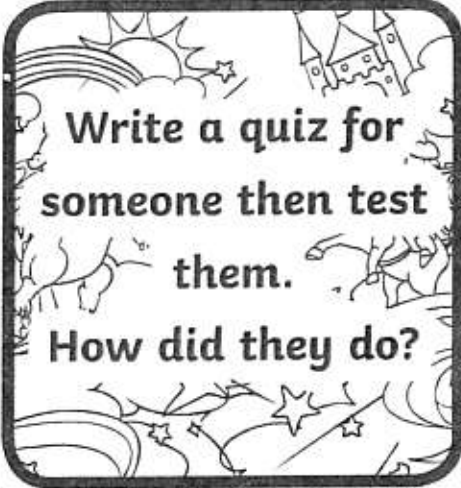


Check your collections and set reminder alerts by downloading our free Daventry District Council app available from Google Play and the Apple Store.

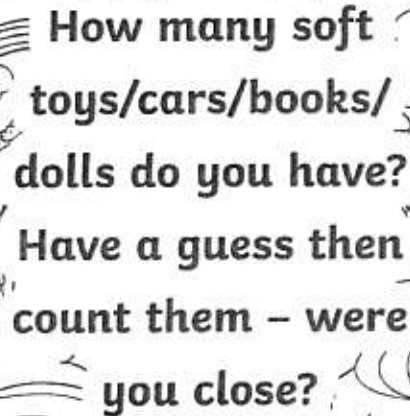


To find out more visit www.daventrydc.gov.uk/recycling

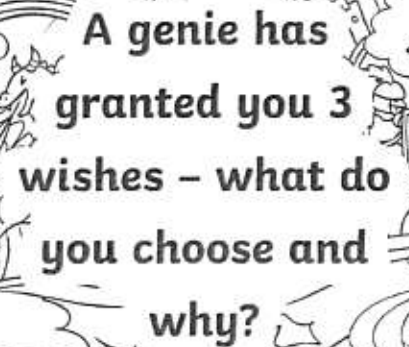
Summer Wishes




Write a quiz for someone then test them.
How did they do?



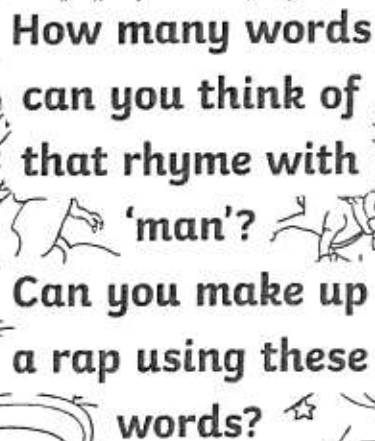
How many soft toys/cars/books/dolls do you have? Have a guess then count them – were you close?




A genie has granted you 3 wishes – what do you choose and why?



How many jokes do you know? Can you make up one of your own?



How many words can you think of that rhyme with 'man'? Can you make up a rap using these words?



Draw your dream bike, scooter or car!

Where is your favourite spot in Whilton?

This was one answer:

The O.S. point on the footpath near Hill Top Farm, because it is the highest point in Whilton at 135 metres and offers 360° views over our wonderful countryside. You can see ther historical Borough Hill and Little Brington Spire and many surrounding villages. A peaceful location. Just you and the sheep!

The Whilton Newsletter is published quarterly and circulated to every household within the parish boundary.

The costs are met by the Parish Council.

The Newsletter is delivered by volunteers who willingly give up their time to bring this to your door.

The Editors are:

- Anthea Hiscock, Langton House, Main Street.
Telephone: 01327 843319
e-mail: anthea.hiscock@tiscali.co.uk
- Jon Brierley
e-mail: Jbrierley1@aol.com

The Editors welcome material for the Newsletter.

The next issue will be the Autumn Edition, covering September to November 2020.
The last date for contributions will be 20th August 2020.

In the circumstances of the Coronavirus pandemic we are unable to produce the usual "What's on" page, but we hope the following may be useful.

USEFUL WEBSITES AND TELEPHONE NUMBERS WHILE REGULAR ACTIVITIES ARE CHANGED OR IN ABEYANCE

Aperture Photography Group: 01327 844182 or via email. neilp.apg@gmail.com

Brington and Whilton Pre- School: www.bringtonandwhiltonpreschool.org.uk

Bell ringers: <https://ringingroom.com/845716923>. (See article)

Daventry District Council: www.daventrydc.gov.uk

St Andrew's Church: Churchwarden: Jbrierley1@aol.com

Whilton Gardeners Association: e-mail: royandtricia@btinternet.com

Whilton Local History Society: www.whiltonlhs.org

Whilton Locks Garden Village: www.wlgv.co.uk

Whilton Parish Council: www.parish-council.com/whilton

Whilton Village Website: www.whilton-village.net