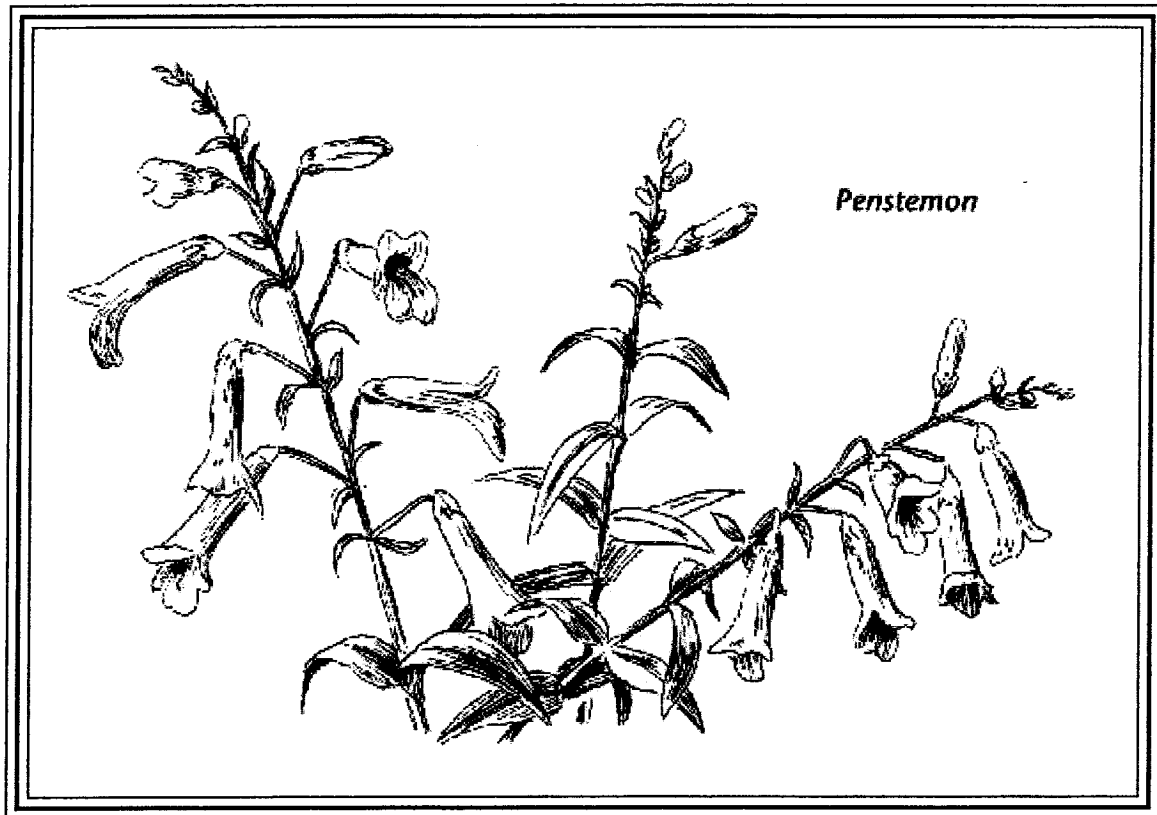
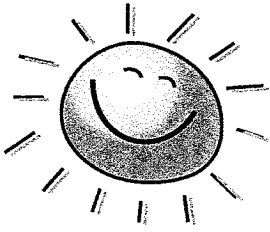


WHILTON SUMMER NEWSLETTER



JUNE – AUGUST
2014

Summer 2014



Letter from the editors

After the warm spring of 2014 we are preparing for outdoor activities and enjoying the gardens and footpaths of Whilton as summer approaches.

We have featured penstemons on the cover as these will be the subject of the Gardeners' Association meeting in June. Although they have American origins they are sure to be gracing some of the gardens which will be visited by members in August. Weather permitting other plans in the fresh air include the pet blessing in the churchyard, Lock Ransom Day at Whilton Locks, and one or two work parties in the Spinney.

We are reminded by the Parish Council that dog owners are responsible for preventing dog fouling and removing mess, and that we all should work together to keep Whilton free of litter. This helps to provide a pleasant and safe experience for anyone who is walking or working in the village and Locks.

Enjoy your summer!

The Editors

WHILTON AND BUCKBY LOCKS ASSOCIATION

What we do

Whilton & Buckby Locks Association(WBLA) has been in existence for over 20 years. The association keeps an eye on the lock flight from what we call Top Lock (by the New Inn Public House on the A5 to the bottom lock (Lock 13) by Whilton Marina. Over the years we have carried out work to the Memorial Garden by Lock 12, looked after the nature reserve by Lock 8 (near the Canal Shop) in Long Buckby Wharf, carried out litter picks and removed weeds and grass from the immediate lock concrete and pathways.

However, our most important volunteer task is the painting of the lock gates, which, when refreshed with new black and white paint, look so much more attractive and smart. We have worked under Canal & River Trust supervision for several years, but have recently been deemed responsible enough to plan our own work schedule and supervise ourselves. This is good, because it means we can take advantage of any good weather breaks and gather in small groups as and when we are available.

It would be great to have a few more volunteer painters (ladies and gents) so if any Whilton folk fancy getting out to give us a hand we would appreciate it greatly. Geoff Woodward is the Co-ordinator for volunteer work parties and he would love to hear from anyone who fancies a few hours in the canal environment, having a laugh and doing something useful. If anyone would like to do a bit of weeding etc. please contact Geoff- it is amazing how good we can make a lock look in just an hour or two if we have enough willing hands.

Summer event

On Sunday 27th July we are holding our annual **Lock Ransom Event (sometimes known as Lock Wheeling Day)**, when we set up stalls at Whilton Bottom Lock (cakes, produce, vintage china and glass, canal art and tombola), have a musical group playing most of the day, and work the locks for passing boats for a donation. We would love to see any Whilton residents who fancy popping down the road to support us and meet our members.

We welcome new members to support our monthly meetings (with speakers' subjects ranging from canal trips to charity involvement, professional photography to an artist's demonstration), so if you are interested, talk to Geoff on the number below. We meet on the second Wednesday night of most months and also have a picnic cruise and Christmas Party.

Sue and Geoff Woodward
geoff.and.sue@btinternet.com
01327 842439

WHILTON VILLAGE HALL 200 CLUB 2013/14

MARCH 2014

1st Prize	094	K Wright	£45
2nd Prize	109	G Martin	£25

Congratulations to all the prize winners

WHILTON VILLAGE HALL 200 CLUB

The above relates to the last draw in our 1st April 2013 – 31st March 2014. Although there are still some collections to be finalised for the year 2014 -2015, the position seems to be that we have lost several members through moving from the village. We have managed to enrol two new members which is very encouraging but this still leaves us with a loss of income for the coming year. It has therefore been decided to reduce the prizes from £45 to £40 for the 1st and from £25 to £20 for the 2nd. If we have an increase of membership, we can adjust this during the year. Under the Lottery laws there is a limit on the payment for prizes relating to the membership numbers.

As Whilton Village Hall relies on rent to pay for the utilities and cleaning, there is little left over to finance anything else. The 200 Club fund can only be used for projects and not utilities. This year already we have had two new heaters in the hall paid for from the 200 Club Fund totalling £510.51.

The Whilton Village Hall 200 Club is very necessary to the management of hall and although the collection is made at the beginning of our year (1/4/14 -31/3/15) it is also possible to add tickets during the year which would be charged pro-rata.

We would like to thank all our returning members for their loyalty.

Whilton Village Hall Management Group



TUESDAY CHAT



Our next Tuesday chat will take place on 24th June 2014.

Do come along and join us for delicious cakes, cups of tea
and lots of interesting chatter;
you will be very welcome.

There is a small charge of £1.50 to cover the rent.

PARISH COUNCIL NEWS

**From the Clerk's
Pen**



What a great start to summer we're having, long may it last! Why not contact me if you would like to spend time outdoors growing your own food as we have two single allotment plots at a cost of £12 each for the year, available with immediate effect.

It has been reported to me that dog fouling is on the up in the village. This is a very anti-social problem that can cost you up to £1,000 if caught. If you're guilty of not cleaning up after your dog we appeal to you to do so, otherwise we may need to implement stronger measures to solve the problem. Alternatively we can always make use of Daventry District Council's offer of free fluorescent spray to highlight these little parcels along the way – could be quite decorative and, if there is any justice, it should be outside your home!

In the same vein, we were disappointed that no residents participated in the annual litter pick arranged by the parish council to spruce up the village ready for summer. Highway litter picking is down to Daventry District Council who cleans up on a quarterly basis, which is not really enough. During a spring litter pick we fill loads of bin bags which would otherwise make the village look rather shabby. We all lead such busy lives and we know it is inconvenient to give up free time to help but, if we may make a suggestion, it would be extremely useful if you could pick up the odd stray can, wrapper, etc. as you go along your way in the village. It may not seem like much at the time but the cumulative effect will be noticed and may do away with the need for an organised litter pick.



Lastly, the appeal lodged by Whilton Mill Cart Circuit with the Planning Inspectorate against Daventry District Council's refusal of their application to construct pit garages was rejected by the Planning Inspectorate after carrying out a site inspection.

Erica Fothergill
Parish Clerk

Letter from the Rectory

Dear Everyone,

We live in a fast world. Modern communication is fast and immediate. There is a sort of one-up-man ship in having more emails than the next person - and then you have to check the recipient has got your email; then the guilt for not replying to emails and the accusation "You haven't replied to my email". All so fast. The world is changing so fast.

Some people love change – something new, a new challenge, a new buzz that "I know something you don't". Some people hate change; want the security of what they know, the remembrance of the good old days. Faith changes us. Faith in Jesus Christ gives us a new perspective on life. We don't put ourselves first anymore; we love even those who hate us; we forgive those who do us wrong; we put God as revealed in Jesus Christ first. This demands a change in ourselves. But unlike the changes we see in the world about us, stimulating to some, threatening to others, taking on being a Christian involves not a straightforward change but a transformation, a re-formation of ourselves - inside ourselves, so we are not biffed around by the changes of the world but have a firm foundation, a quiet confidence that God is at our centre and in charge.

So don't seek or either revel in the challenge of change or avoid change, rather let yourself be transformed by Christ into a new person. Then in quiet confidence we can cope with the overstimulation of change and the fear of it.

Sue suekipling@btinternet.com

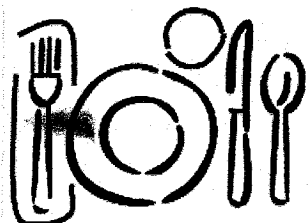
WHILTON SOCIAL LUNCH - 8TH APRIL 2014

This was very enjoyable event with 16 villagers eating together.
We had our usual interesting menu including four types of pudding on this occasion
and soft drinks and donated wine.

Tea, coffee and mints were also enjoyed.

As usual credit was shown to the cooks by cleared plates!

WHILTON SOCIAL LUNCH – TUESDAY 22ND JULY 2014



**We invite you to join us at 12.30 pm for 1.00 pm
in Whilton Village Hall.**

The charge for this meal is £5 per person.
Please let us know if you wish to come by Saturday
19th July by informing
Anthea (843319)
or Ros (842324)

NEWS FROM ST ANDREWS

It seems a long time since Easter!

Our Service was well attended – like old times was one comment. Everyone received a gift of an Easter Egg thanks to the generosity of Dave and some younger members of the congregation even managed to take home more than one. The service was followed by coffee and cakes (thanks to Jane and Helen) giving everyone a good opportunity to catch up on village news. One unusual feature of the service was that it was led by not one but three people - Peter, Gill and John of the Benefice lay team. They assist Sue in delivering services across the six churches.

Our services are now set on a monthly rota which comprises one formal communion mixed with shorter less formal Worship for All services alternating between 9.15 and 11.00. The latter are often delivered by the lay team who are able to give a refreshing perspective. If you have not been to one of our services recently, why not come along to see for yourself. You will be very welcome.

Our next unusual service will be the Pet Blessing on 10 August. We tried this last year and had a really enjoyable service . The weather was good enough for us to be outside with our furry friends who enjoyed treats. Their human companions were able to enjoy Bucks Fizz and cakes. We hope to build on this again this year so why not bring your pets.

If you have any ideas on how we can develop and bring the church closer in to village life, we would be interested in your suggestions.

Dave is on 842167

I can be contacted on 843380 or by email Jbrierley1@aol.com.

Jon Brierley, 7 Langton Rise



For a growing number of people across the world, the horror of war is part of daily life, and this was the emphasis of Christian Aid Week in May.

The good news is that individuals, communities and churches can make a real difference. This Christian Aid Week the people of Whilton village gave £216.69 in the house to house collection.

Thank you to all those who gave so generously.



WHILTON GARDENERS ASSOCIATION



News from Olive

In April Dr Twigs Way from Cambridge gave us an interesting and well illustrated talk on Digging for Victory in the Second World War.

Our plans for the summer are below.

4th June

**Mr John Lee will be talking about
PENSTEMONS (a particular favourite of mine
and featured on our front cover.)**

6th August

**VISITS TO WHILTON GARDENS,
followed by a social/ buffet.
Details will be available nearer the time**

Visitors and non members are always welcome to attend. The charge for non members is £3 per evening.

For more information ring 07921429228



ROUGHMOOR SPINNEY



There was a very small working party of two on 13th April, but a few barrowfuls of granite chippings were added to the Spinney path.

The next work party will begin at 2 p.m. on **Sunday 8th June**, when the task will be sawing up fallen branches. This activity will be weather dependent, and so for further information please ring Maurice on 842006.

We plan to continue the work on the paths during the season, in order to improve access and make walking easier.

All volunteers are very welcome, and dates of further work parties will be announced on the notice board.

WHILTON LOCAL HISTORY SOCIETY

The Local History Society met on Friday 16th May, when the subject was **WHILTON ON THE EVE OF WAR**, finding what the parish was like in the run up to the First World War.

The 1911 census shows that, omitting visitors and passing boat people, there were 102 males and 113 females, making a total of 215 inhabitants in 64 households. The census recorded 24 farm labourers in the parish, but 11 of these were over 50, the oldest being 76 year old Frank Hillyard at the Locks. Here I introduce you to just a few Whilton people.

Edmund Henry Bevan, the owner of Whilton Lodge, was a retired cement manufacturer. He, his young wife and two little daughters lived in a world apart from the main parish with 26 people living on his estate and coming from all over the country. Among their many jobs were lady's maid, butler, cook, stud worker, chauffeur, gardeners and coachman. Edmund Bevan was High Sheriff for Northamptonshire in 1912, and steward at the Pytchley Hunt Ball in January 1913, but just before the War he left Whilton. This probably led to the dispersal of his household. His successor Sir Kay Muir used the Lodge mainly as a hunting lodge, and may have just kept a skeleton staff here. This probably means that about 10 men who would have been eligible to fight in 1914 had already left Whilton.

The picture we formed of Whilton showed a depressed poor village. The shadow of the workhouse loomed. John Hilliard had come from a large struggling family in Whilton. As a young man he had been sentenced to hard labour for stealing potatoes, he had worked as a labourer, carrier and farm worker, and had first entered the Workhouse in 1903. He was brought before the Northamptonshire Assizes in November, pleading guilty to an attempted suicide in Whilton. *"P.C. Johnson said that the prisoner discharged himself from the Workhouse, and cut his throat because he wanted to lie in the churchyard. Prisoner was discharged, and his Lordship directed the Police to see that he returned to the Workhouse."* Widow Ethel Hillyard living in Buckby Lane in 1911 was no doubt a relative. A number of tiny cottages were squeezed into Buckby Lane, among them the home of Joseph Adams and his daughter Isabella. Joseph had lost his wife in childbirth in 1876, and struggled to bring up three children, the family having to resort to periods in the Workhouse in Daventry. Joseph himself finally died in the Workhouse aged 82 in 1924.

Harry Dunkley was landlord of the Plough Inn, living here with his wife Elizabeth and niece Barbara Gammage; he also acted as the village carrier. About exactly 100 years ago tragedy hit this family on 26th May 1914. The witnesses' account of that morning gives us a picture of normal life on the canal at this period. Harry Webb a carpenter for the Canal Company said he was moving material from a shed opposite Whilton Lock, helped by another canal employee Walter Manning. Henry Dunkley was carting stone close by on the off-side of the canal.

About 9.45 a.m. Harry Webb and Henry Dunkley had a chat by the stop gate of the lock, and then Henry Dunkley went off towards the place where he was carting, probably part of his job as the local carrier. 55 minutes later the two canal workers

saw a pocket handkerchief and cap in the canal, and then minutes later they saw a body in the lock. They dragged it out, but Henry Dunkley was past help. His death remains a mystery. Henry was sober; his brother James from modern Church Farm said he was in his usual health the day before. The doctor recorded death caused by drowning in the six feet of water in the lock, following concussion.

Opposite the Plough was once the main farm of the village, with its old stone and thatch farmhouse, yard and buildings. In this period the building housed two old spinsters and their servant. Anne and Laura Emery were the only representatives of the family in Whilton. There had been complications over inheritance, bankruptcy of Robert Emery from Home Farm, and a general depression. The main farming Emerys were living in Norton.



The home of Anne and Laura Emery

In part of the modern "Old Post Office" next to Rose Briar (the home of John SL Townley), lived George Tomlinson with his wife and baby son Elgar Frank. George worked as a canal clerk, but was an accomplished pianist and composer, publishing some of his works in the 1920s after he had left Whilton.

Tom Essen, a farm labourer with his two sons lived in the Stone House, and also kept an outdoor beer shop here. Behind this was a short lane leading to the Corner House, a stone and thatched farmhouse, but its occupants were ladies of private means and none with local roots. Widow Eliza Loam had been born in Peterhead, Scotland. Her three spinster daughters lived with her, and her niece Helen.

Mrs Loam was the mother in law of the rector, Rev William Henry Logan. In the Rectory we find the rector with his interests in education and role as education inspector for the diocese, his wife Eliza, whose three sisters were next door, and the three Rectory children. The oldest, Michael Loam Logan was an articled clerk, an architect and a surveyor, aged 26 in 1911. He had two younger sisters, Helen and Charity. Charity, known as Miss Cherry, was 18 when war broke. She was popular for her work leading the local Scout troop, supported by her father. In later years she married a clergyman and moved to Windsor. Michael enlisted and served throughout the War.

There was an intriguing visitor to Whilton on census night. The Rectory had a guest; Violet Winifred Raynell aged 17 had been born in Kobe, Japan, but it was noted she was a British subject by her parentage. She was on a visit to England and returned alone on the long voyage to Japan in 1912. She had visited England before when she was 7 and came with her mother. There must be another story lurking here, but she was probably a relative of the Logans.



*Kate Rose and Olive Higgerson
outside Field View c.1906*

The family at Field View are an example of some of the movements of local families and the link with Birmingham. The head of the family was Thomas Higgerson, a railway worker, who had been born in Norton. His wife Kate had come from Birmingham. Her roots, however, were in Whilton, as she was a great grand daughter of the first schoolmaster of Whilton, Thomas Taylor.

Thomas and Kate had a number of children, one of whom, Tom, was in the forces by the end of the First World War.

Whilton School was not thriving. Mrs Sharpe the head, resigned in 1911 and her replacement Miss Lamerton was unpopular in the village, using her taws or whip too frequently and failing in her discipline. Some parents sent their children to Long Buckby instead. There were only 24 children recorded in the 1911 census and so the talk of building a new school must have been unrealistic. There were also difficulties because Mrs Sharpe refused to move out of the School House.



Hilda Lamerton

Next door in Rose Cottage lived elderly Dorothy (Dolly) Dyer, the daughter of previous schoolteachers, now running the Post Office, playing the church organ and describing herself as a seamstress. Usually dressed in black, she was respected by the village, but seen as a bit eccentric. Sadly she too ended her days in Daventry Workhouse.

Down at the Locks the Spotted Cow was a busy pub, particularly catering for the boat people, with landlord William Elliott and his wife Mary, and further down the canal, Windlass Cottage was the home of Thomas and Kate Rose Adams, with their baby son, Will. Tom was a canal lengthsman, looking after the canal from Whilton until half way to Weedon. With the heavy wear of boatpeople and their horses, this would have been an unending maintenance task. Tom enlisted in 1915 and served as a driver in the Expeditionary Force.

The large double fronted house on the site of the carpet shop was the home of Frank Litchfield with his wife, three children and two living in servants. Frank was a horse breaker and trainer, who had been born in Long Buckby. He became Captain Frank Litchfield and held a position in the prisoner of war centre at Brixworth, living in Brixworth Grange. He later became the secretary of the Pytchley Hunt.

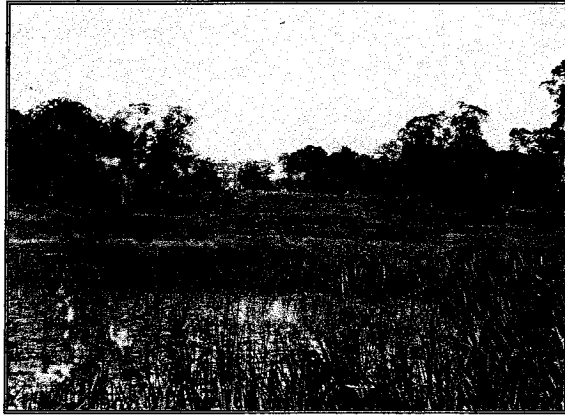
Despite well over 20 men from Whilton serving in the Forces, it is a remarkable fact that no one from Whilton was killed.

The sequel to this meeting will be in the autumn, when we hear about the man from Whilton who won the VC in 1917.

Whilton Local History Society

WATER IN THE GARDENS

**Brockhall water gardens of the 18th and 19th centuries:
a continuation of the Brook Project**



**7.30 p.m. Friday 11th July 2014
In the Village Hall**

**ALL ARE WELCOME.
Entrance £1.50**

**Whilton Local History Society
....a date for your diary**

7.30 p.m. Friday 12th September 2014

**CAPTAIN HENRY REYNOLDS M.C., V.C.
The making of a local hero.**



All are welcome. Entrance £1.50

FIRST WORLD WAR COMMEMORATION

Norton are holding a display in the village hall on August 10th from 11a.m. - 5 p.m. to commemorate the men of the village who gave their lives in World War 1.

If anyone has any connection to Norton,
or the men on the War Memorial
we would be delighted to hear from you.

Please contact the Parish Clerk, Angela Feltham on admin@nortonvillage.com
or the Chairman, Mike Goodman on 01327 877940
or come along and speak to us on the day.

News from Rochelle

The first bit of good news is that I took my first shorthand exam, which was 50 words a minute. Earlier this month I found out that I had passed with a first class. At first I was incredibly nervous. I had sat a couple of practice tests with my teacher but it's so different when you know that you are about to sit a piece that you have never done before. There is no stopping the dictated piece if you go blank, no way to have something re-read to you and no way to tell what the piece will be about. In fact I can't remember what the exam was about at all now. It's been completely wiped from my memory.

When writing shorthand outlines you really don't want a shaky hand. During my practice before the exam I was fine and then during the test all the muscles and ligaments in my right arm decided to turn to jelly. Once the piece had been read out to me I had to complete the second half of the exam, transcribing and typing up what I had written in 30 minutes. Seeing as the exam is only a 3 minute piece, it didn't take a lot of time for me to type it up. In my heart of hearts I was quite sure that I had passed, I just didn't know that I had done so well. I guess this is a lesson for everyone to trust your gut feelings and put your inhibitions aside. My next exam is going to be sometime around the end of July beginning of August, so there is no rest for the wicked.

Tuesday nights are still a joy at the church for choir. We have all done so incredibly well, the sound, the confidence in people and even the breath control has improved dramatically in everyone. We are all getting ready for our next concert which is going to include group numbers, duets, full choir pieces and solos. So I look forward to seeing you all there.

Local Supplies

Whilton may not have a shop in the village, but the Marina Chandlery at the Locks is well stocked with groceries for boat people and land lubbers alike.



The shop is open 7 days a week as follows:

Monday to Saturday --- 9 a.m. to 5 p.m.

Sunday --- 10 a.m. to 4 p.m.



All are invited to the next concert by **Whilton Warblers** to be held at 7.30 p.m. in the Parish Church on Friday 20th June 2014. Tickets are available at £3.50 from Linda Treacey or made be purchased at the door.

If you are interested in joining the choir, just come along on a Tuesday evening during term time. For further information e-mail Linda at lindahalltreacy@gmail.com

Ladies Evening at Whilton Village Church

Come along and enjoy an evening of relaxing treats.

7.30 – 9.30 p.m. Friday 13th June 2014.

Free entry. Light refreshments available.

For further details please contact Linda on 01327 842034.

Sasha's Column

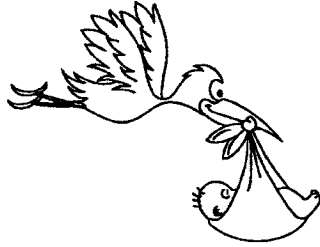
It has been very hot these past couple of days and although I had my hair cut quite a while back, it has started to re grow and is now beginning to irritate me.

Dragging your little paws around in the heat with mammoth textured wool on your back is no easy task. As I am sure all you science buddies know, black only attracts heat, so really I have a very good excuse not to walk once my collar has been put on and to then go back in the house and lie on the cold kitchen floor. I am not a fool, dad. I'm not walking in this heat!

However, saying this, everyone in the house is very confused when they go out in the back garden to either pull out some weeds or just sit or even lie down doing nothing, except staring up at the sun through dark glasses, when we could be playing ball. Now, whether that is because the big round yellow thing in the sky has hypnotised them or because I don't want to walk, or even if it's because "it's too hot to play", I don't know. But there is always time for ball. The answer is no, of course, so what better way to live the life of luxury than to jump on and lie down too right in the middle. I can't really see what all the fuss is about. Did I mention there is always time for ball?

Ice cubes! Who could have thought that this bit of hard water would keep me so cool at this time of year. Of course I prefer them when they have a bit of flavour and colour. (Yes I know us dogs are colour blind but I am talking about all intents and purposes.) When I do finally decide that I really must go for a walk, it is either really early or really late, so the amount of people I see is stupendous. A couple of weeks ago, it took dad and me an hour to walk to the bottom of the village and back because so many people wanted to stop to talk to me.

I think I'm Whilton's very own celebri-dog. Next thing I know I will be trotting down the village with some designer sunglasses and Swarovski collar. However, I do promise that if this does happen 1) I must do it without dad knowing and 2) I'm still going to be Sassy Sasha. Signing out now. Please tell me it's finally ball time!!!



FAMILY NEWS

Spring baby congratulations

Welcome to **Toby Arthur Gardner**, son of Rupert and Jo, and grandson of Ros and Jim Gardner of the Dove Close. Toby was born on 22nd March, weighing 6 pounds 4 ounces.

Toby's great grandfather Gardner was named Arthur and so this name is a link with the family's past.

We also welcome a new baby in the village. **Hugo Rhys Thomas**, son of Sarah and Mark Thomas of the Old Post Office. Hugo arrived on 20th April, weighing in at 8 pounds 4 ounces. The family are often joined in Whilton by Mark's three older children, who are currently at university. Hugo would be pleased to meet Whilton residents on his regular walks around the village!



PET'S CORNER

Villagers who take a walk down Buckby Lane will probably have seen Gruff and Squeak, the two Pygmy goats and the four bantams in the paddock at the bottom of the lane.



Gruff and bantam

Photo by Ros Gardner

CAPTION COMPETITION

What do you think these two may be saying to one another?

Send your suggestion to any of the editors listed inside the back cover by 30th June, and there will be a prize for the winning caption.

Ros Gardner

Calling All Crafters

Daventry District Needs You!

Book your *FREE* craft fair pitch at the

DAVENTRY CENTENARY FETE

AND OLD FASHIONED SPORTS DAY

Saturday 9th August 2014 from 12-5pm

The Hollows Playing Field,
Waterloo, Daventry NN11 4BJ

Part of Daventry's WWI Centenary Commemorations
All donations received to go to associated Military Charities
To book your pitch please contact Della Butcher at:
dbutcher@daventrydc.gov.uk or phone: (01327) 302418

.....

The Farming Community Network (FCN) and the Royal Agricultural Benevolent Institution (R.A.B.I.)

would like to invite you to join us at a panel discussion and lunch
hosted by Chris Heaton-Harris MP on Friday 27th June, 11 for 11.30am
at the council chamber, Daventry District Council.

The purpose of the meeting is to strengthen awareness of the support
services that are offered to the farming community by these charities.
We will highlight how local businesses and third sector organisations
can refer those who need support to the charities and how you can
support our charitable objectives.

Thanks to support from Barclays Bank (Northampton) a sandwich
lunch will be provided (free of charge) and the event is expected to
finish no later than 2pm. Please feel free to circulate to those who
might be interested in coming to this event. For more information,
please contact Milly Wastie (R.A.B.I.) on 07525 323450 or Lyn
Kemsley (FCN) on 01788 824492

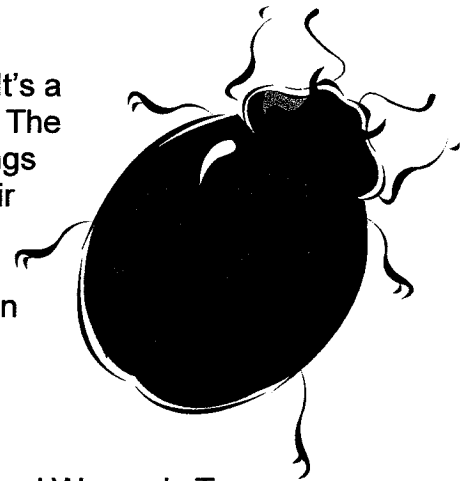
Please RSVP using the Eventbrite booking system for catering
purposes by Friday 20th June.

<http://www.eventbrite.co.uk/e/rabi-and-fcn-panel-discussion-with-daventry-mp-chris-heaton-harris-tickets-11504533369>

NEWS FROM BRINGTON SCHOOL – May 2014

CREATIVE CURRICULUM

The children and staff are really enjoying this term's topics, 'It's a Bug's Life' in class 1 and 'Walk Like an Egyptian' in class 2. The children have already learnt so much and are bringing in things from home, always a great sign that they are engaged in their learning. Highlights so far have been a treasure hunt in which all the clues were in hieroglyphics and a visit from the Zoolab which involved a bug hunt in the grounds and then meeting the bigger cousins of the bugs found back in the classroom!



WOMEN'S TOUR

We were all very excited by the visit to Brington of the inaugural Women's Tour of Britain. The children brought bells and horns to school to help create a fantastic atmosphere and their spirits weren't dampened by either the weather or the long wait for the women to show! I was really pleased by the excellent newspaper reports produced by class one following the event.

MAY FAYRE



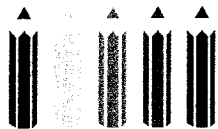
Thank you to all of you who attended our May Fayre this year. It was another lovely occasion which was enjoyed by all. What a difference the weather can make! The May Queen and her attendants looked lovely and took their roles very seriously. All the children including the very youngest danced round the maypole and were perfect. Thank you so much to the FoBS for their organisation, Mrs Smith for her work with the dancers and May procession and all those who contributed on the day. We raised well over £500 which will be used to buy new staging for the school.

RECEPTION CHILDREN

We are very much looking forward to meeting our new children for September in the coming weeks. We are delighted that we have filled all our places and there is a waiting list! The children will be invited to a range of activities this term including a teddy bear's picnic.

.....

One of the May Queen's attendants on this sunny occasion was five year old Chloe Gains from The Gardens in Whilton.



Brington and Whilton Pre-School

Thank you to all who supported our Easter Egg Hunt, we raised £145.00 which will go towards supporting the children by replacing and buying new toys.

If you are looking for a pre-school for your child we still have places available so get in touch. We take children from 2 years old or over and we offer excellent individual education and care. We are led by very well qualified and caring staff who engage with the children and get to know the children well in our friendly environment.

Our sessions are at Whilton Village Hall:
 Monday 9.30am – 1.00pm including lunch
 Wednesday 9.30am – 1.00pm including lunch
 Wednesday Afternoon 1.00pm – 3.00pm for children 3 years and over
 Friday 9.30am – 1.00pm including lunch

If you would like further information or would like to visit the pre-school please contact Jenny Holman 01604 770083.

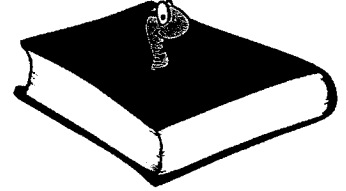
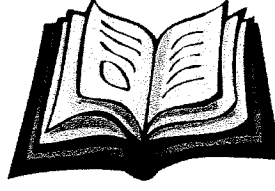
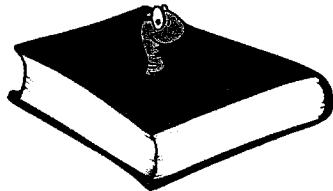
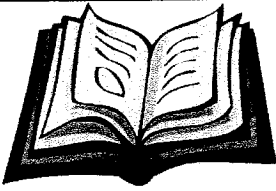
Can you find 20 children's book titles hidden within the word search below?

C	H	A	R	L	O	T	T	E	S	W	E	B	C	G
H	R	D	A	S	G	F	B	E	H	T	G	A	R	O
Y	E	V	I	F	S	U	O	M	A	F	O	Z	A	L
A	D	P	L	H	T	I	N	I	R	D	M	C	E	A
Y	R	E	W	Z	A	P	I	F	R	A	D	T	B	F
R	W	T	A	C	H	D	L	F	Y	D	N	R	N	F
N	L	E	Y	R	I	F	B	Y	P	G	A	T	O	U
E	M	R	C	E	Z	A	R	M	O	I	G	I	T	R
H	B	P	H	N	S	O	G	E	T	Z	E	B	G	G
D	E	A	I	S	A	M	O	H	T	L	M	B	N	E
I	P	N	L	T	R	E	M	L	E	H	D	O	I	H
R	C	R	D	H	T	N	E	M	R	M	P	H	D	T
R	C	A	R	R	I	E	S	W	A	R	I	E	D	N
O	T	H	E	C	A	T	I	N	T	H	E	H	A	T
H	C	S	N	D	P	I	N	I	T	N	I	T	P	I

- | | |
|--------------------------|----------|
| Peter Pan | Mr Men |
| Harry Potter | Heidi |
| Tintin | Miffy |
| The BFG | Dear Zoo |
| Paddington Bear | |
| Famous Five | |
| Charlotte's Web | |
| The Hobbit | |
| The Cat in the Hat | |
| The Gruffalo | |
| Horrid Henry | |
| Thomas (the tank engine) | |
| Railway Children | |
| Carrie's War | |
| Meg and Mog | |
| Elmer | |

All About Me!

Over the years there have been numerous books which have claimed to be 'children's favourites'. In this issue we have asked some of the children of Whilton about books they are reading, and the best book they have read so far.



"The Secret Hen House Theatre" by Helen Peters

I am currently reading "The Secret Hen House Theatre" by Helen Peters. It's the first book she has ever written, but I am eagerly waiting for more books to come!!

This book follows a young girl named Hannah (not me!). Sadly Hannah's Mother recently died, but Hannah still works and lives on a farm with her Dad, Brother (Sam) and her two Sisters (Martha & Jo). Her Father is having problems paying the farm rent, but Hannah and best friend Lottie have a trick up their sleeve to help.....

Hannah's Mum used to love acting and so does Hannah - but their Father dislikes acting. Hannah and Lottie make a secret Theatre in an old hen house on their farm and enter an acting competition. Hannah & Lottie keep it a secret from Dad though. If they win the competition, they will receive £500. They wish to give it to Hannah's Dad to help pay the farm rent. If they don't win.....

By Hannah Baker

Maria Healey (aged 10):

My favourite book is called Running Wild by Michael Morpurgo.

After the death of his father Will and his mother move to Indonesia for a new start. However Will's life changes forever when a tsunami hits.

I liked the book because it was exciting and interesting.



Georgia Hathaway (aged 9):

My favourite book is called Shadow by Michael Morpurgo.

Set in Afghanistan, the story shows how close the bond can be between a boy and his befriended dog.

I liked the book because it was exciting and you really wanted to find out what happened.

Fun Stuff

With school holidays looming, don't let boredom take over – here are some fun activities and games to try.

Penny Toss

What you need...

- Washing up bowl or paddling pool.
- Water
- Open plastic container
- Pennies

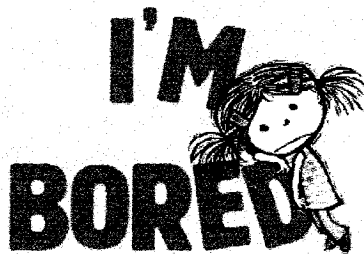
How to play....

1. Fill bowl or pool half-way with water, and place open container on top so it floats.
2. Stand about 3 ft away from the bowl/pool (draw a line with chalk perhaps?)
3. Toss the pennies into the container, the player with the most pennies inside is the winner (sole players can try and beat previous scores).

Alphabet Hunt

How to play....

1. Can be played indoors or outdoors.
2. Simply go on a hunt to try and find one thing which starts with each letter of the alphabet – be sure to keep a list so you can track which letters are missing. Tip: could use adjectives (descriptions) to fill in missing letters i.e. old bottle for O, or red leaf for R.



Make a Snail Farm

What you need....

- 2lt clear plastic bottle
- Damp soil
- Lettuce/weeds
- Snails from the garden

Directions....

1. Cut a small door in the side of the bottle about 3" x 2" so that when the bottle is on its side the door is at the top.
2. Place damp soil in the bottle.
3. Add in a few snails from the garden, and give them fresh food like lettuce & weeds.
4. Watch the snails as they move around; see if you can spot any of their 25,000 teeth.

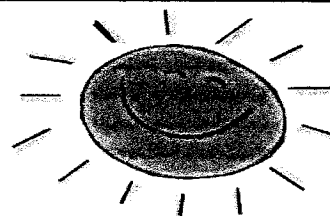
Marble Arcade

What you need....

- Scissors
- Shoebox
- Marker Pen / Felt Tip Pen
- Heavy object (book, stone or shoe perhaps?)
- Marbles (or buttons etc)

How to play....

1. Cut five or six holes of different shapes and sizes (square, rectangle, triangle, semi-circle etc) in one long side of a shoebox (each hole needs to be big enough for a marble to pass through).
2. Write a number between 1 and 10 next to each hole (easier/bigger holes have smaller numbers; harder/smaller holes have bigger numbers).
3. Set the box upside down on a flat surface and place the heavy object on top, to hold the box still.
4. Take turns shooting marbles one at a time through the holes from a set distance.
5. If a marble misses a hole it stays where it lands, if it goes through then the player can pick up that number of holes from the playing area (ie. Hole no.5 means the player can collect 5 marbles).



Paddling Pool Freeze

If we are lucky enough to have some hot sunny days, try this to cool off.

Add some ice cubes to a paddling pool of water (washing up bowl could also work). Try and remove the cubes with just one foot!

The Whilton Newsletter is published quarterly and circulated free to every household within the parish boundary. The costs are met by the Parish Council.

The Editors are:

- **Anthea Hiscock, Langton House, Main Street.
Telephone: 01327 843319
e-mail: anthea.hiscock@tiscali.co.uk**
- **Karen Whitcombe: Inglenook, Main Street
Telephone: 01327 843544
e-mail: karen.whitcombe@cummins.com**
- **Rochelle Lye, 1 Langton Rise
Telephone: 844181
e-mail: rochelle@btinternet.com**

We would be very happy to welcome another member on to the editorial team. If you are interested, please contact any of us.

The Editors welcome material for the Newsletter. If possible, please send your contribution by e-mail. If you do not have a computer, the editors will be happy to type handwritten articles for you.

The next issue will be the Summer Edition, covering September – November 2014 . The last date for contributions will be 20 August 2014.

The Newsletter is published quarterly, but Whilton also has a website – www.whilton-village.net. This contains details of the organizations in the parish, previous Parish Council Minutes and Newsletters and a comprehensive Picture Gallery. It also has latest news and updates on parish events.

If you would like to advertise your local business, flyers can be delivered to every household in the parish with the Newsletter at a small charge. For information please contact one of the editors

WHAT'S ON IN WHILTON? SUMMER 2014

<u>DAY</u>	<u>DATE</u>	<u>TIME</u>	<u>PLACE</u>	<u>EVENT</u>
Sun	1 June	10 a.m.	East Haddon Church	Benefice Sung Eucharist with Sunday School
Wed	4 June	7.30 p.m.	Village Hall	Gardeners Association
Sun	8 June	2 p.m. 6 p.m.	Spinney Church	Work party, weather permitting Evening Praise
Fri	13 June	7.30 p.m.	Church	Ladies evening
Sun	15 June	9.15 a.m.	Church	Worship for All
Fri	20 June	7.30 p.m.	Church	Whilton Warblers concert
Sun	22 June	11 a.m.	Church	Worship for All
Tues	24 June	2.30 – 4 p.m.	Village Hall	Tuesday Chat
Sun	29 June	8 a.m.	Church	1662 Holy Communion
Sun	6 July	10 a.m.	Church	Benefice Sung Eucharist with Sunday School
Wed	9 July	7 p.m.	Village Hall	Parish Council
Fri	11 July	7.30 p.m.	Village Hall	Local History Society
Sun	13 July	6 p.m.	Church	Evening Praise
Sun	20 July	9.15 p.m.	Church	Worship for All
Tues	22 July	12.30 for 1 p.m.	Village Hall	Social Lunch
Sun	27 July	11 a.m. All day	Church Whilton Locks	Worship for All Lock Ransom Event
Sun	3 Aug	10 a.m.	Brampton Church	Benefice Sung Eucharist with Confirmation and Sunday School
Wed	6 Aug	Evening	Whilton	Gardeners Association Open Gardens
Sun	10 Aug	6 p.m.	Church	Pet Service
Sun	17 Aug	9.15 a.m.	Church	Worship for All
Wed	20 Aug			Last date for Newsletter contributions
Sun	24 Aug	11 a.m.	Church	Worship for All

Other weekly events include:

Mon, Wed, Fri: in term time 9.30 a.m. – 1 p.m. Brington and Whilton Pre-school in
 Wed 1 – 3 p.m. the Village Hall
 Tues: in term time 7.15 p.m. Whilton Warblers Choir in the Church
 Mon: 7.45 p.m. Bell ringing at the Church. For further
 information please contact Justin or Theresa Baker:
 844263 or e-mail: j.t@online.net.