

WHILTON NEWSLETTER

JUNE & JULY 2011

GOOD NEWS

The Newsletter lives on!!!

We are pleased to advise that a new team came forward as being interested in taking over as Editors. Anthea Hiscock, Teresa Leadbetter and Karen Whitcombe will be editing the next issue.

Before announcing our retirement and after talking to the new team, it has been agreed to produce the Newsletter on a quarterly basis. This will be in the form of one issue for each season.

The autumn edition will be published in September

WHILTON MIDSUMMER SOCIAL LUNCH

This will take place on Thursday
23rd June 2011 at 12.30pm for
1.00 pm in the Village Hall.

The price will be £5.

If you are interested, please let
either Shirley Brown (842968) or
Ros Gardner (842324)
know by Saturday 18th June

In this issue

- Parish Notes
- Church News
- Whilton Gardeners' Assoc.
- Whilton Local History Society.
- Jo's Climb for Charity
- Village Hall News
- Pre-School
- Whilton Village Hall
- Spinney News
- Social Events
- Neighbourhood Watch

TUESDAY CHAT

As usual, since the Social Lunch is in June, there will not be a Tuesday Chat .

In view of the falling numbers, mainly due to health reasons, the matter of the future needs to be reviewed.

It is our aim to continue the social gathering if we possibly can as it has been well supported.

Watch the noticeboard for developments.

NEWS FROM AROUND THE PARISH

DIANA SCOTT – APRIL 1919 - APRIL 2011

Diana died at the age of 92 just a few days after her birthday.

Diana was born in Twickenham and attended Girton College, Cambridge to complete her education. Whilst at Cambridge she achieved a Blue in the Ladies Cricket Team. She obtained a degree in English and taught this subject in Yorkshire and then decided to further her education and took a degree in psychology.

She took advantage of this degree and was appointed Education Psychiatrist for Northamptonshire County.

In 1965 Diana moved from Spratton to Whilton and purchased Holly House with her friend Frances Drake. For many evenings after work they came over to Holly House to carry out work redecorating and general refurbishing before moving in with their cats. They lived there for many years before selling Holly House and having a bungalow built on part of the land and named Orchard House. This was their home for the remaining years. Diana loved this house and garden.

Diana and Frances loved travelling and in their younger days visited many countries as tourists before these places became popular and at times staying in primitive conditions. At any gathering of people in the village they would often recount stories of their adventures which were amusing and amazing.

Diana was involved with various activities in the village and held office in the Whilton Women's Institute which she greatly supported.

For many years, after she retired, she organised Village Outings which were very popular. A coach was hired and there were always two locations visited – usually interesting buildings and then lovely gardens of note. On one occasion Buckingham Palace was visited. The trips were always well supported and it was rather sad when Diana decided to cease organising due to health reasons.

Diana was very caring and helpful to disadvantaged people and tried to help whenever she could.

Diana loved her garden and was still actively involved even in the last two years of her life. She also loved watching sport on the television especially the Wimbledon Tennis.

Another strong character from the village has gone and will be sadly missed.

PARISH ACTIVITIES

Report of the Village Hall Management - CHAIRMAN'S REPORT 2020/2011 – Mike Lewis

Hall refurbishment has carried on with the painting of the walls and woodwork. The floor will be sanded and resealed when time allows. Apart from looking at the furniture there is not a lot left to be refurbished.

The move by the play group to Brington school is still on the agenda, 2011 or later.

The 200 club carries on supporting the hall's refurbishment and maintenance. The organisation by Derek and Shirley Brown in running this venture is again first class and the collectors' efforts have been magnificent in keeping the club running like clockwork.

Everybody who has contributed to the running of the hall is thanked for their time and dedication, particularly Mary Kane who does all the bookings in her usual quiet 'back office' fashion.

Together we can keep this hall in a superb condition, weather the current spending crisis and look forward to a brighter future, with more bookings, for this community amenity.

Thank you all.

Report of Roughmoor Spinney Management Group 2010/11 - Derek Brown

There is very little to report as the Spinney is fairly well established and with a minimum of two Working Parties each year and with the occasional individual taking care of on-going tasks, the maintenance is satisfactory.

However, so far we have not been able to deal with the matter of the pond and it is hoped this will be tackled when we have our next Working Party in the very near future.

The second hand motor mower purchased in the early days for keeping down the growth in various areas in the spinney has just about reached the end of its working life and will need replacing with a machine more suitable for the task. This is currently being looked into and a suitable machine has been identified. The financing of the purchase of this equipment is to be discussed at our next meeting.

It is difficult to know the numbers visiting the spinney but there are signs that the paths are regularly walked.

Thanks to all volunteers who have given their time to assist in the maintaining of the spinney for the benefit of residents in the parish. We also thank Whilton Parish Council for their financial support.

Health and Safety Audits have been carried out during the last 12 months.

Report of the Gardeners Club - WGA Chair's Report – Ann Gilbert

Whilton Gardeners' Assn. has a steady 30 or so members each paying £10 annual fee. For this members have the opportunity to attend six meetings or trips out each year on the first Wednesday of every other month. Other benefits are - 10% discount at Whilton Garden Centre, Discounted Seed orders up to 50%, free visit to RHS Garden, up to 4 speakers per year, extra garden visits, free Christmas supper and other Social events

We've tried over the last couple of years to introduce some new trips and talks into the programme. We arranged quite a lot of trips out during 2009 and had feedback from some that they like a good sprinkling of talks too, so we've tried to even out the events in the village hall and the trips.

The Association is led by a committee of six people who meet prior to the Association meetings to plan the programme and manage the finances.

The Association manages well for funds, boosting income with occasional fundraising and with raffles at some meetings. At the beginning of the current financial year the funds stood at £423.

We continue as members of the RHS, which provides insurance for members.

Activities 2010

3rd February - The AGM has been moved to allow more time to report on the previous year's finances as the year end is November. There was a good attendance again this year – approximately 20 people and the AGM was followed by a light-hearted quiz organised by Olive.

7th April - Mrs Janet Cropley an old friend of WGA returned to give an illustrated talk on 'Scent in the Garden'

2nd June - Andrew Patmore gave fascinating talk on The History of Salcey Forest – up to the present day

Sunday 20th June - Visit to Felley Priory in Nottinghamshire. A beautiful day, lovely gardens – trip attended by about 10 people

4th August - A visit from our colleagues at Woodford Halse Gardeners Association (who outnumbered WGA members) when there were garden visits to three members' gardens in the village. Committee members organised delicious evening buffet with wine.

Our hanging basket and tubs competition (that no-one enters) was judged by the vicar and was won by Phil Grant (hanging basket) and Benny and Mark at Stone House for their front of house show

11th August - A visit to Julie Connell's garden at Clipston (plus cream tea) – a lovely evening

6th October - Linda Smith, a specialist in ponds and aquatics, gave super talk on Garden Ponds – great, informative evening

Finally – December – Christmas Supper for members – a chicken casserole, followed by fruit pie meal was very well attended – approximately 20 people

Report of the Bell Ringers – Janet Bowers

Practice evening is Monday 7.30pm and anyone who would like to learn to ring is welcome to come along, or contact Justin Baker or Janet Bowers. At the present time we have 5 adults from Whilton 2 from Brington and 1 from Harlestone and also 3 juniors from Whilton (2 for their Duke of Edinburgh award). We also have valuable help from 2 ringers from Fawsley for which we are extremely grateful. Three of us regularly ring for weddings at Brington and Norton and on occasions at other towers either in the benefice or elsewhere. The main reason for ringing is to ring for church service but with so few this is not always possible every Sunday but we do usually manage to ring some of the 8 bells we have for special services.

We have welcomed several visiting ringers throughout the year. The tower is in the Daventry branch which is one of 10 of the Peterborough Diocesan Guild of Church Bellringers.

Report of the Churchwardens – Janet Bowers

On 27th April last year at Brington the Revd Sue Kipling was Instituted and Inducted as Rector of the Spencer Benefice which includes Whilton.

There has been some changes within the services -we now have an evening service once a month at 6pm.

Clock, organ and fire extinguishers have all had annual maintenance and the Quinquennial and electrical inspection and reports are due to be done this year.

The church fundraising committee continue to work hard to raise funds which also aid the social life of the village eg the Quiz held last month, car boot and bazaars to name some.

In the last year we have had 2 baptisms 1 funeral and 1 memorial service but no weddings (last one 5 years ago)

Report of the Local History Society – Anthea Hiscock

The Local History Society has continued to meet bi-monthly in the Village Hall. As yet we have not had to pay for a speaker, and as a result are able to cover the expenses of the rent with small donations of £1.50 per meeting.

Last May our meeting was based on the history of the Old Plough. In July our meeting was entitled, "Guess or remember", and those who attended tried to identify photos and drawings of past residents, places and objects in Whilton. The September meeting was postponed to October, so that it could include the launch of the history of Whilton: "Living in the Gap". Several villagers enjoyed taking part in a dramatic reading "Rivalry in Whilton", based on one of the chapters. This was the first opportunity to purchase the book, which is now available from Anthea Hiscock at £12.99.

In November the subject was Christmas Parties at Whilton Lodge. These were held in the 1930s and village children had happy memories of these. We sampled some of the foods they were served, including fancy cakes, thinly cut sandwiches and orange jelly.

We began this year with the story of the Stone House in January, with its varying roles from farmhouse, to carrier's home, outdoor beer house and bakery.

In March we had a visit from Julie Cassidy the Archaeological Finds Officer for Northamptonshire, who told us about her work and identified objects found in Whilton, which dated from Neolithic times to the last century.

The Society is open to anyone and all are welcome. The next meeting on 19th May will be a workshop, aiming to create a leaflet about Whilton Churchyard, and in July the theme will be the life and times of Don Welch, who died last year.

Whilton Parish Council

The Annual Meeting of the Parish Council was scheduled for Wednesday, 11th May, but due to the resignation of Mike Lewis as both Chairman and a member of the Parish Council, the business of the meeting did not take place.

It is hoped there will be further information in the Autumn Newsletter.

At present there are 2 vacancies for Parish Councillors. If YOU are interested in serving the Community in which you live please speak to one of the present Councillors – Sue Wingrave, Jonathan Hanslip, Ken Bowers, Nora Swinford, Michael Thomas or myself to find out more.

**Alison Nicoll Clerk to Whilton Parish Council
01327 879194 or d.nicoll@uwclub.net**

Our Rector is The Revd. Sue Kipling who works from Brington Rectory and can be contacted on 01604 770402 or E-mail: suekipling@btinternet.com

Dear Everyone,

It is not really surprising that other nations see us obsessed with the weather. In these days when predictability is expected – we have come to expect that we will know what will happen, when and how – the weather defies prediction, at least in the medium and long term. So when we pass in the street, we remark on the weather. It is sure ground for agreement: ‘What a lovely day it is!’ ‘O yes, but there’s a cold wind today!’ or ‘Wish it would stop raining!’ ‘But we do need it!’ We watch the weather forecast day by day as we plan our lives and complain if the forecasters have got it wrong. We want certainty!

We are coming up to the time when we remember how the Holy Spirit came upon Jesus’ disciples. His small band of loyal followers had kept together as they slowly realised that the Jesus who had indisputably died, was actually still alive and kept on turning up, eating drinking,

walking and talking with them. Then at Pentecost, nowadays often called Whitsun, the Holy Spirit came in a bizarre way and changed everything; they became confident articulators of the power of God. No one could have predicted the change in them nor the change that subsequently came over the world. To be open to the Spirit is unnerving. Life becomes unpredictable. We have no idea what will happen in our lives. And yet that unpredictable spirit gives a freedom, a freedom to live life confident that God is ultimately in charge and that he is living life with us and in us and he never dies. The Holy Spirit changes a predictable, perhaps dull life, injecting it with excitement and yet security in the knowledge that we are always held within God. Why not ask for a bit? It comes free for the asking!

Sue



This photo shows Olive with two cyclists, Ken & Josie, who arrived at the Car Boot Sale in Whilton from the south of Spain, en route to Nottingham. (Word of Mary's Apple Durham Fruit Cake' had obviously reached the Continent).

After a rest they were travelling down the East of England and across the channel back home via Holland, Belgium, Germany, Austria, Switzerland and Italy etc.

ST ANDREW'S CHURCH SERVICES

JUNE 2011

5 TH	10.00 AM	BENEFICE EUCHARIST AT <u>WHILTON</u>
12 TH	6.00 OM	TAIZE SERVICE
19 TH	9.15 AM	HOLY COMMUNION WITH HYMNS
26 TH	11.00 AM	WORSHIP FOR ALL

ST ANDREW'S CHURCH NEWS

APRIL 1st April Fools Day Quiz proved to be a lively and enjoyable event . Brains at the ready, teams started the battle with the questions delivered by Neil Phillips. Depending on whether there were groans or shout of delight indicated how the questions were received. At half time bangers, jacket potatoes, beans and cheese were served, after which the fun commenced again.

Thank you Neil for being our question master with a great range of questions and thus giving all a really good evening. (Neil was presented with 2 bottles of wine in appreciation)

The Quiz, together with a raffle held, realized £ 300 for St Andrews church funds.

MAY 8th - Car Boot. After all the sunny days recently the day was not an encouraging one for booters but after a slow start it improved and we had some 13 booters which together with donations at the gate from buyers and refreshments (always very popular) **£ 500.42** was given to Church funds.

This event would not be able to take place without the Emery family giving permission to use Wadd Close Field for which we give a sincere thank you.

NOTE a Christmas bazaar is being planned for Sunday November 8th in church 2.00-4.00pm, Please if you can help in planning , running or giving suggestions for types of stalls would be very welcome. Any thoughts please to the committee - Janet Bowers. Teresa Leadbetter, Mary Emery, Philip Grant or Greg Lye.

Our next meeting is 8th September so please contact before then if possible

Janet Bowers, Chairman

WHILTON VILLAGE HALL

On Wednesday 4th May 2011 our Chairman/Secretary gave notice of resignation by telephone to the Treasurer to take immediate effect. This came as a great surprise for he had supported the Village Hall for many years, the last nine being the Chairman and more recently, in addition to this, the Secretary. Due to other commitments, he felt that he could no longer carry on as Chairman/Secretary.

A Meeting that had already been scheduled for Wednesday 18th May 2011 took place and Maurice Clements acted as Chairman and Derek Brown as Minute Secretary. This Committee is already one member short and now we have three vacancies to fill

It is essential that there is a Management Committee otherwise the Village Hall will be forced to close. This must not be allowed to happen.

We have reached a critical stage in the history of the Village Hall where we have the majority of the existing Committee Members having served a considerable number of years and further resignations without new members will result in the closure of the Village Hall.

The Village Hall is a valuable asset to the Parish and the existing Management Committee have made every effort to provide a facility for all to enjoy. The Committee meets four times per annum and it is not considered to be particularly time-consuming.

It is hoped that members of Whilton Parish will realise that a very serious point has been reached and will come forward and give support by accepting a place on the Management Committee, For further details please contact either Shirley or Derek Brown on 842968 or by email. d.brown253@btinternet.com

The Royal wedding Commemorative Tea did not take place due to insufficient support.

WHILTON VILLAGE HALL 200 CLUB APRIL 2011 –MARCH 2012

OUR VOLUNTEER COLLECTORS ARE NOW OUT AND ABOUT AND IF YOU HAVE NOT ALREADY RECEIVED A VISIT, WE ARE SURE THAT YOU WILL BEFORE LONG. SO FAR WE ARE PLEASED TO REPORT THAT APPROXIMATELY 50% OF OUR EXISTING MEMBERSHIP HAVE BEEN VISITED AND RENEWED THEIR TICKET FOR A FURTHER 12 MONTHS.

WE HOPE THAT COLLECTIONS WILL BE COMPLETED IN THE VERY NEAR FUTURE SO THAT THE FIRST DRAW CAN TAKE PLACE AT THE SOCIAL LUNCH ON 23RD JUNE 2011



WHILTON SPINNEY



Like our gardens the Spinney flora has been lush and colourful this spring.

We have now reached the time when maintenance is needed and a preliminary date has been proposed for a Working Party to work on Sunday 26th June at 2.00 pm.

Family Favourites

Tuesday nights in our household just aren't the same now that the Hairy Bikers' cookery series, *Mums Know Best*, has come to an end. The format is that people reproduce much loved family recipes whilst recalling associated memories. As well as the straightforward recipes I confess to a weakness for a Geordie accent!

The series prompted me to look through my Mum's old Be-Ro cookery book which I estimate to be around 50 years old. There's a recipe in it that brings memories of Sunday teatimes flooding back.

We were a big family of seven kids, very active, spending most of our time outdoors in all weathers and consequently a hungry tribe (our collective name). Due to the number of us seconds were unheard of in our household. All food was devoured in the first serving. There was, however, a speciality of Mum's that was guaranteed to beat us - her Layer Cake. Indigestion Cake (as we affectionately called it) was a towering confection comprising four layers of sponge sandwiched together with lemon curd and buttercream and then smothered with buttercream.

My brothers would return from their rugby / football / cricket matches and we girls would return from a day with the ponies and wolf down the traditional Sunday teatime tinned salmon salad followed by a slice of layer cake. There would always be some left over but no one, not even middle brother Tim, aka Dustbin, could tackle a second slice. The Layer Cake won every time!

Sadly I've never mastered the art of baking sponges, mine generally resemble door wedges or frisbees on a really bad day (I blame the oven, in fact I've blamed every oven I've ever had) so whilst I've never tackled this delicacy the memory lives on.

I've reproduced the introduction to the Be-Ro book which makes for quaint reading.

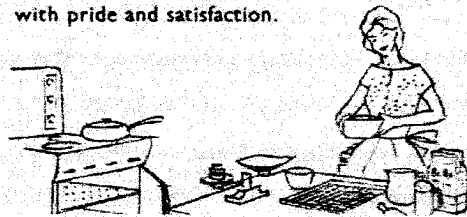
Teresa Leadbetter

Good Home Baking

THE Woman who can cook well and bake well has every reason and every right to be proud of her cooking.

In ninety-nine cases out of a hundred she has a happy home, because good cooking means good food, and good food means good health.

There's no more pleasing sight than that of a happy family around a well-stocked tea-table, all enjoying their food; and the mother who is responsible for the good cooking, and who has prepared it with her own hands, has every right to survey the results of her culinary skill with pride and satisfaction.



The tasty Scones and Cakes that you make at home, the appetising Pies and Tarts, all cost much less than those you buy ready made. You know what's in them, too; you know they are good and pure; that they have been made under clean, hygienic conditions . . . and your doctor will tell you that good, wholesome food is worth more than all the medicine in the world, especially for hungry, growing children.

That's why it pays to bake at home!



1st July 2011

JO'S 5 PEAK CHALLENGE!

I am hoping to climb the five tallest mountains in UK and Ireland in under 48 hours to raise funds for Cystic Fibrosis. Cystic Fibrosis is one of the UK's most common, life-threatening, inherited diseases. This illness has claimed many lives including three of my work colleague, his remaining brother is 21 and also suffers from the disease.

I aim to climb the following mountains;
Ben Nevis, Scotland
Scafell Pike, Lake District
Mount Snowdon, North Wales
Slieve Donard, Northern Ireland
Carrauntoohil, Southern Ireland

If you would like to sponsor me, please e-mail
jo@grant91.wanadoo.co.uk
OR
Call Jo Grant on 07960556623

Neighbourhood Watch Report

Since my last report, the Whilton Locks area seems to have been targeted with one car reported stolen and also a set of number plates stolen. Scrap metal theft is rife also within our area. Within the surrounding area, thieves are targeting in particular 4 x 4 vehicles and trailers. I urge everyone to be vigilant and report anything suspicious to the police immediately.

The dates for the next two Village Street Surgeries are:

Tuesday, 7th June between 6 -7 pm.

Tuesday, 5th July between 6 -7 pm.

The Police car will be parked at the Village Green during these times and our PCSO Sarah Gray will be out and around the village talking to as many residents as possible.

If you have any issues you would like to raise with her, please look out for her or get in touch with me and I will ask her to call and see you.

The usual numbers to contact if you see or hear anything suspicious are Northamptonshire Police Switchboard Tel: 03000 111 222 or the dedicated Neighbourhood Watch 01604 432436 or 999 in case of an emergency. Alternatively you can call Crimestoppers anonymously on 0800 555 111.

Ros Gardner, Co-Ordinator



WHILTON GARDENERS' ASSOCIATION



Welcome to summer. After a very dry spring which has brought most of the plants forward a month, we are now experiencing lots of colour. Also the bugs and other enemies of the gardener are on the march, so keep vigilant from now on.

On 6th April, Mr Dave Watkins answered our gardening questions at a meeting in the village hall which was very well attended. After listening to a potted history of how he came into gardening, questions came thick and fast.

1st June - 7.30 pm in village hall - Alan Sawyer will talk on 'Bee Keeping for Beginners'
This is not to 'bee' missed.

(Non members welcome £3.00 incl. coffee & biscuits)

Contact; Olive Bardill- Tillet -Tel 07921429228 or 01327844169

**SUMMER GARDEN
PARTY
AT
THE LITTLE RECTORY, WHILTON
FRIDAY 1ST JULY AT 7.00 PM**

TICKETS - £8.00

COME AND ENJOY A CONVIVIAL EVENING WITH ASIAN AND ENGLISH

HOT AND COLD FOOD

By kind permission of Adrian and Agnes Lee

**My eyes are dim I cannot see
My hearing has forsaken me
My balance has completely gone
And I feel helpless from now on
But all is not lost because I find
I still have contact with my mind
And memories and power of speech
Are blessings still within my reach
Although I'm apt to moan and curse
I must admit life might be worse.**

**Rhyme sent in by Mrs Joan Davies,
Roughmoor. (Aged 98 June 2011)**

**THE NEXT EDITION OF THE
NEWSLETTER WILL BE FOR THE
MONTHS SEPTEMBER, OCTOBER
AND NOVEMBER**

**PLEASE LET THE NEW EDITORS
HAVE DETAILS OF YOUR PLANNED
EVENTS AND REPORTS BY
MONDAY, 22ND AUGUST, 2011.**

**FOR THE SEPTEMBER ISSUE
PLEASE SEND YOUR ARTICLES
TO ANTHEA HISCOCK.**

**Email: anthea.hiscock@tiscali.co.uk
(Tel. 843319)**

WHAT TO SEE IN WHILTON CHURCHYARD

Members of Whilton Local History Society met on 19th May to begin work on producing a leaflet about Whilton Churchyard. The stone structure we know today as St Andrew's was probably first built in the late 1100s, but it is very likely that there was a wooden structure here before that, especially since we know there was a priest here in 1086. Some historians now think that in many cases the burial site around a church may have been in existence before there was a building. It is thus quite possible that our churchyard is a thousand years old.

It is very difficult to estimate how many burials there have been. Until recent times almost everyone dying in the parish would have been buried here, and a few important people were actually buried beneath the church. Since the parish registers have existed there is no record of a plague or disaster here. In fact there is every reason to think that Whilton, with its good clean water supply from springs, its hilltop atmosphere and fertile farming land was a very healthy place to live. Almost certainly it was affected by the Black Death in the late 1300s, when the lord of the manor and his son both died, and, if Whilton followed the national pattern, perhaps over half the inhabitants died. However even this would only have been a relatively small number. Over the millennium perhaps a maximum of 7000 bodies have been buried.

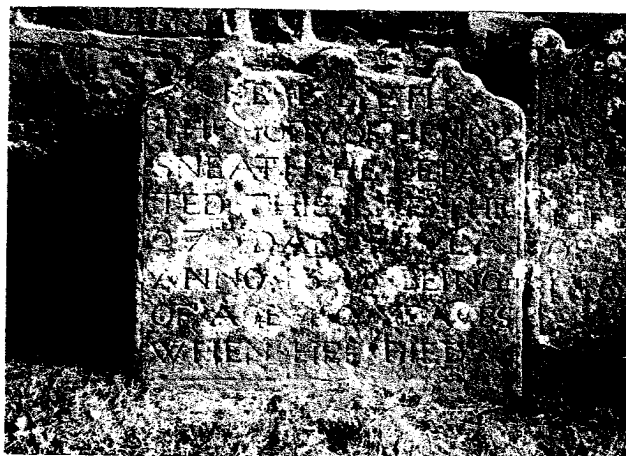
Throughout the middle ages most bodies were buried in a shroud, tied above the head and feet. As an attempt to help the woollen industry there were even Acts of Parliament between 1666 and 1680 to force people to use woollen shrouds. Whilton has records that burials in woollen were taking place. This law was officially in force until 1814. Coffins became more common for those who could afford it by the 19th century. While talking we found we did not know the derivation of the word "coffin". In fact, it comes through Old French and Latin from a Greek word, which means "basket".

On the whole, tombstones in churchyards date usually from the 17th century. This is so with Whilton. There are three listed stones outside the west wall of the south aisle, described by English Heritage as "*3 headstones. Dressed ironstone. Largest to north dated 1691 with cherubs head, middle stone with double volute head to Thomas Embry, Wool Winder, d.1681, third with oval laurel wreath facing worn inscription and dated 1687.*"

There are others, some earlier, along the wall by Churchgate. Among them is this stone memorial to Henry Sneath.

The inscription reads:
"HERE LYETH THE BODY OF
HENRY SNEATH HE DEPARTED
THIS LIFE THE 27TH DAY OF JULY
ANNO 1666 * BEING OF AGE 60
YEARES WHEN HEE DIED"

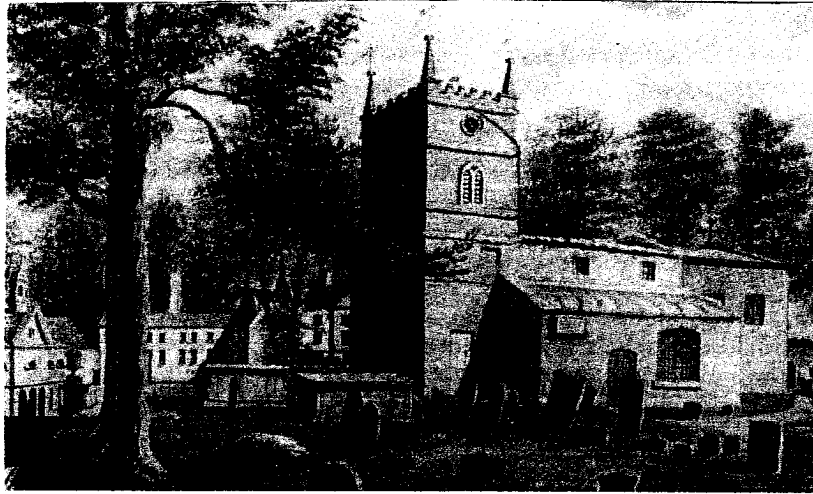
* This date is hard to decipher but appears to be 1666





These early gravestones are small compared with later ones and some are decorated with worn cherubs' heads, often used as a symbol of resurrection.

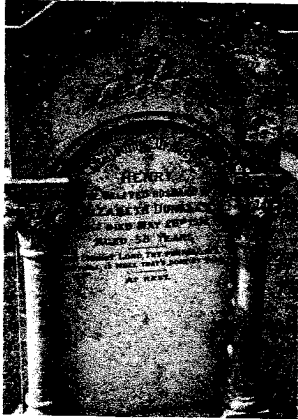
They are so weathered that it is difficult, if not impossible, to read the inscriptions. This is one of the problems we face in the churchyard. The local stone used is very soft and crumbles away after time. We are also faced with a healthy growth of lichen, often a sign of clear air, but not very helpful to us here. This does mean that everything we can record or notice is quite important, because some things will be illegible after a few more years.



Whilton Churchyard about 1800.

Over years fashions have changed and different types of memorial have been popular. We do not have extravagant or showy memorials in Whilton, and that is probably in keeping with the history of the village, but we do have some examples of changes in fashion in Whilton. These include a few foot stones as well as head stones, with just the initials and date, and four chest tombs, of which that for the Elliott family of the Locks is listed. There are signs that at least two of these were surrounded by rails. These rails may have been surrendered in metal salvage collections during the Second World War.

The Greek Revival style in the early 1800s with plain geometric shapes and triangular heads can be seen in one or two examples here. After the coming of the railway there was more use of non local stones, which on the whole have weathered better, sometimes having the letters picked out in black, which helps us to read them. There was also a fashion for curbs around a grave, which can be seen in the Reynolds memorial to the south of the church. We only have a handful of crosses, and no standing angels, obelisks or broken columns which became very popular by the late 1800s, and which would have changed the character of Whilton churchyard.



This is one of the more ornate tombstones at Whilton. This is in memory of Henry Dunkley, who died just before the First World War on 26th May 1914, aged 55. Although the gravestone does not record this, he was drowned in the canal lock.

The space below was left for a memorial for his wife, Elizabeth. She was not buried in Whilton churchyard, and the inscription was never completed.

Society members looked at leaflets produced by other places and discussed a variety of possibilities which may be put into a leaflet about our churchyard. This may include its wildlife and the routes of paths leading into it. We also talked about what would be the best sort of illustrations. We hope to work on this idea and to produce something within the coming year. The Society intends that this will be the first of a series of leaflets on Whilton, including perhaps the interior of the church, the canal, and other aspects of the parish.

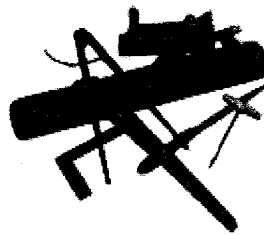
The next Whilton Local History Society will be at 7.30 p.m. in the Village Hall on Thursday, 21st July, when the subject will be "Don Welch and his times."

Anthea Hiscock

Whilton Local History Society

DON WELCH AND HIS TIMES 1921 – 2010

A talk based on his recorded memories.



**7.30 p.m.
Thursday, 21st July 2011.**

**All are welcome.
Please bring £1.50 to cover expenses.**

**The September meeting of the Local History Society will be on Thursday
8th September.**

Barry Smith of Harlestone will be talking on "Ridge and Furrow"



Brington and Whilton Pre-School

The Village Hall, Whilton, Nr Daventry, Northants

Spaces available for September

For children 2 years and over.

Join a local pre-school offering excellent education and care.
Led by very well qualified and caring staff.

Children enjoy a variety of activities including small world play, role play, construction, crafts and physical play.

Monday 9.30am – 1.00pm, Wednesday 9.30am – 1.00pm
and Friday 9.30am – 12 noon.

For further information or to visit – contact Jenny Holman 01604 770083

During this last term we have had a great time visiting Forest School at Everdon. We have been able to roll down hills in the fields, make bird's nests, make potions to make it rain, played 1,2,3 where are you?, and been on a Treasure Hunt to find the lost hedgehog, together with lots more of exciting activities.



Looking down rabbit holes.



Playing Squirrel, Hedgehog and Snail.

☺☺ SMILE PLEASE ☺☺



OVER EGGED

WE WENT TO BREAKFAST at a restaurant where the 'seniors special' was two eggs, bacon, mushrooms and toast for £3.99. "Sounds good" my wife told the waitress, "but I don't want eggs". "Then I'm afraid I'll have to charge you £4.4 because you are ordering a la carte" the waitress warned her. "You mean I have to pay for not taking the eggs?" my wife asked incredulously. "Yes" replied the waitress.

"I'll take the special then" my wife said. "How do you want your eggs?" the waitress asked. "Raw and in the shell" my wife replied. She took the eggs home and baked a cake.

SUMMARY OF EVENTS

June and July 2011

Wed	1 st	June	7.30 pm	WGA in village hall " Beekeeping for Beginners"
Tues	7 th	June	6.00 pm	Policy Surgery in village
Thurs	23 rd	June	12.30 for 1.00 pm	Social Lunch in village hall
Sun	26 th	June	2.00 pm	Working Party in Spinney
Fri	1 st	July		Jo Grants 5 Peaks Climb
Fri	1 st	July	7.00	WGA Summer Garden Party at Little Rectory
Tues	5 th	July	6.00 pm	Police Surgery in village
Thurs	21 st	July	7.30 pm	Local History Society in village hall ' Don Welch and his times'
Mon	22nd	Aug		DEADLINE FOR NEXT NEWSLETTER Please hand in your contribution before this date or otherwise we cannot guarantee it will be included in the next edition.
Thurs	8 th	Sept	7.30 pm	Local History Society in Village Hall – Barry Smith on 'Ridge and Furrow'

The Whilton Newsletter is circulated free to every household within the parish boundary. The costs are met by the Parish Council.

The current Editors are Derek & Shirley Brown, Cherry Orton, Main Street.
Telephone – 01327 842968. Email: d.brown253@btinternet.com
For the next issue only (September) please send your contributions to Anthea Hiscock by 22nd August. Email: anthea.hiscock@tiscali.co.uk. (Tel 843319)

Whilton Village is very lucky to have its own excellent website – www.whilton-village.net . This contains details of the Organisations in the village, previous Parish Minutes and Newsletters and a very comprehensive Picture Gallery. If you have the facility why not take a look at the content.

Please supply a disk or memory card with your contribution if not email us so that we can manipulate the text to fit as necessary. If you do not have a PC or typewriter the editors will type the articles as they have always done in the past.

Articles of local interest, poems, recipes puzzles or drawings will always be considered for inclusion in the Newsletter.