

WHILTON NEWSLETTER

JUNE AND JULY 2009

SPINNEY 10TH ANNIVERSARY CELEBRATION

On Saturday 2nd May 2009 at 8.30 am the tour of the spinney with twelve parishioners led by Anthea Hiscock took place.

Anthea gave a potted history of the spinney which records show goes back to the early 19th Century.

The weather was absolutely perfect and the spinney was looking its best; many spring wild flowers were in bloom including the large bright yellow Marsh Marigolds. The trees and shrubs were beginning to look lush and green and healthy.

Meanwhile, in the village hall, a cooked breakfast was being prepared for the hungry spinney walkers..

They arrived back at 9.30 am and then had an opportunity to look at the history of the spinney since it had been acquired for the Parish of Whilton ten

years ago. The display consisted of photographs taken at various stages of the project.

16 Parishioners sat down to a substantial cooked breakfast with all the trimmings .



In this issue

- Parish News
- Church News
- Whilton Gardeners' Assoc.
- Whilton Photographic Club
- Whilton Local History Society.
- Neighbourhood Watch
- Future Events

FOR YOUR DIARY

In the Village Hall

- Weds 3rd June- Gardeners' Association 7.30 pm
- Thurs, 18th June – Social Lunch -12.30 for 1pm
- Tues 9th June & Tues 14th July- Photographic Club 8.00 pm
- Thurs 16th July – Historic Society –7.30 pm
- Tues. 28th July – Tuesday Chat –2.30pm

WHILTON LOCAL HISTORY SOCIETY MONUMENTS AND MEMORIES IN WHILTON CHURCH

The society met in St Andrew's Church on Thursday 21st May, which was Ascension Day. In medieval Whilton this was the culmination of Cross Week, when there would be processions around the parish and fields, and litanies would be sung, praying for good crops and that the parish should be free of the pestilence. As the procession went along people would carry banners, probably embroidered with symbols or pictures of saints. These were known as cross cloths, and were sometimes left to the church in parishioners' wills. They may have been hung near the crosses inside the church for the rest of the year. We have a record that Thomas Tobby left 6 shillings in 1547 to buy a cross cloth for the best cross in Whilton. Cross Week therefore meant a holiday in Whilton, and with that went other celebrations, including the "parish drinking". The same Thomas Toby left six hives of bees and their increase to be used *"to make a parish drynkyng in the crose weke after ye procession."*

We began by walking round the churchyard noting a few of the graves. It was not until the mid 1600s that gravestones were generally introduced. Among our earliest are those in memory of Ann Dixon, who died aged 26 in 1668, and of her brother, William, who died in 1671.

The first Emery gravestone dates from 1681 and they have a number of other memorials and chest or table tombs over a vault where several members of the family were buried. There is also an Elliott chest tomb. Richard Elliott was a boatman, who brought his baby son for baptism in 1811. He settled at the Locks, where he was variously described as a shopkeeper or grocer, innkeeper at The Spotted Cow, a farmer and a coal merchant. In fact he probably combined these activities for most of his life, serving the boat people. He died aged 68 in 1852.

By far the majority of memorials are to adults who reached a good old age in Whilton, many in their 80s, suggesting this was a healthy place to live. There are, however, a few to young children and babies, including this stone in memory of Frederick Main Walker, the little son of Whilton's second schoolmaster. He died in 1841 aged two and a half. George Watson was another child, aged 7 years 8 months. He died in 1825, after being accidentally drowned at Brownsver.



Inside the Church we noted particularly the memorials to the Freeman and Rose families. Richard Freeman was lord of Whilton Manor and died in 1749.

The memorials in the Church tower include Richard, his wife Elizabeth and their daughter Jane. Richard and Elizabeth were parents of the eccentric Langton Freeman, whose body was sealed up in the summerhouse of the Manor House in 1784. There is no memorial to him.

At the west end of the Church are several monuments to members of the Rose family. Whilton benefited tremendously from the generosity, taste and genuine social concern shown by this family, especially by Rev William Lucas Rose and his wife, Ann. The memorials reflect this. This Rector died in the bitter January of 1814 when snowdrifts over 24 feet were recorded in Dunchurch.

His memorial is effusive, but records suggest that it genuinely reflects the feelings of his family and parishioners:

"Patron and Rector of this Church and for many years an active and upright Magistrate for the County.

Constant in the practice of every Virtue that can adorn the Character of Master, Husband and Father, he directed his chiefest care to the more important concerns of the Pastoral Office, conducting them for thirty-seven years with a fidelity, diligence, and zeal, which afforded to all who knew him abundant testimony that the service of his God, and the Spiritual improvement of his Flock, constituted the first Business and Pleasure of his Life."

Set into the floor tiles in the chancel are two slabs in memory of John Spateman and his wife. Rev John Spateman was Rector and died in 1749 the same year as the lord of the manor, Richard Freeman. John was Whilton's poet Rector, writing long works in blank verse, entitled "*Jesus*" and "*War*". He attempted to get another 10,000 word poem printed, entitled "*Tobias*". This was going to be in twelve volumes, but there is no record that he managed to get enough subscribers.

We also noted that there are other unmarked burials beneath the Church itself. These include several Tudor villagers, among them Francis Hodge, a farmer, who requested to be buried in the church porch of Whilton in 1597. Our current porch and entrance date from a later period, and so his remains may lie under or near the old tower door. It does mean that he expected parishioners would walk over his bones for centuries to come. Francis also showed concern for the community, leaving six shillings and eight pence to the church and four pence to every poor householder in this town of Whilton.

The next meeting of Whilton Local History Society will be in the Village Hall on Thursday 16th July. At 7.30 pm.

There has been a change to our programme, and the subject will be "*The tale of Tommy Adams*", who was born in Whilton and died in 1764.

Please bring £1.50 to cover charges.

**All are welcome to the
Whilton Summer
Social Lunch**



Whilton Village Hall

**12.30 for 1 p.m.
Thursday, 18th June 2009**

£4 per person

**To book please contact
Anthea: 843319
or
Shirley: 842968**

**Please book your place
by Sunday 14th June**

☺ **SMILE PLEASE** ☺
No flies on him

A woman went into her kitchen to find her husband stalking around with a fly-swatter.

"What are you doing" she asked

"Killing flies" he said

"Have you caught any? she asked

"Yes, three males and two females" he replied.

Intrigued, she asked, *"How can you tell the difference?"*

"Easy" he said, "Three were on the beer can and two were on the phone"

**All are invited to
TUESDAY CHAT**



**in the Village Hall
from 2.30 – 4 p.m.**

on Tuesday 28th July 2009

**All are welcome for a cup of
tea and a chat.**

**Please bring £1.50 to cover
expenses.**

VACANCY

**WHILTON VILLAGE HALL
MANAGEMENT COMMITTEE**

We have now been without a secretary for about three years.

The position is not particularly onerous; we meet maximum four times a year and have a separate Booking Secretary .

If you are interested and would like to have full details of the vacancy, please contact **Mike Lewis, Chairman** on
01327 842404

WHILTON ANNUAL PARISH MEETING

The Annual Parish Meeting is held each year as an opportunity for anyone in the parish to raise concerns or interests about the parish. It is not a Parish Council meeting, and anyone may speak. It had been agreed that for the 2009 meeting we would attempt to gather reports from as many organisations and activities in the parish as possible. As a result the record of this meeting is also a record of communal life in Whilton over the past year.

The meeting was held in the Village Hall on Monday 27th April 2009. Twelve parishioners attended, with Mike Lewis, Chairman of the Parish Council, in the chair, and Anthea Hiscock, Clerk to the Parish Council, as secretary. County Councillor Steve Osborne and District Councillor Wendy Amos attended part of the meeting.

Apologies were received from Ken Bowers, Ann Gilbert and Police Community Support Officer, Lorraine Humfress.

The previous minutes were approved and then **ANNUAL REPORTS** were received as follows:

a) LOCAL GOVERNMENT:

Report of County Councillor Steve Osborne

Steve Osborne reported that he is on the Young People's Scrutiny Committee, that the County Council is going through a restructuring and that the highways service under MGWSP is better than before.

Report of District Councillor Wendy Amos

Wendy Amos reported that the Daventry District housing stock had now been transferred, that the Council Tax has risen but only by a small amount, and that the appeals concerning the proposed Daventry development are continuing. The proposed Flore bypass is under discussion. The DDC is expecting the return of the money invested in Icelandic banks, but the real concern is the effect on services of the loss of interest.

There is continuing concern about the provision of infrastructure for Daventry developments and parishioners expressed anxiety about the increased amount of sewage likely to be generated before Whilton Sewage Works is enlarged to cope with it.

Report of Chairman of Parish Council

Mike Lewis reported that two new councillors, Michael Thomas and Susan Wingrave had joined the council, and Greg Lye had resigned. Grants obtained through our County Councillor enabled the repair of the church clock and provision of the new seat on the Green. The Parish Design Statement was approved in May, and Manor Lane has been adopted.

Planning applications have caused some problems and we are introducing an improved tracking system. We have had good responses from the new highways contractor in the

Photographic Club

Neil Phillips reported that the club is now in its fourth year, with a membership including all abilities from experts to beginners, mostly from Whilton, but attracting some from other villages. All are welcome to the Tuesday meetings and the outings. Over 20 people attended the meetings on wedding and landscape photography. The club is making plans to produce a calendar and perhaps Christmas cards, and may be able to mount an exhibition too.

Social Lunches

Shirley Brown reported that the occasional Social Lunches began in 2006, organised by three people after the WI went into suspension. These lunches are now run by a larger team and happen three times a year, the last having been on Shrove Tuesday in Fair Trade Fortnight, incorporating pancakes.

This year "Tuesday Chat" meetings are being trialled. These take place monthly on Tuesday afternoons in the Village Hall.

St Andrew's Church

Janet Bowers reported that regular services continue despite the interregnum, with the help particularly of Revs. David MacPherson and April Richards. At present no new incumbent has been appointed. New helpers are always welcome to assist with the flowers, cleaning, reading or as sides-persons. Janet thanked all who help and Roy Haynes who keeps the churchyard so neat.

OPEN FORUM FOR PARISHIONERS

The Clerk reported that no entry has been made yet for the East Midlands in Bloom competition this year. Some discussion followed this and the Gardeners' Association will follow this up and make a decision.



Mike Lewis thanked everyone who had contributed reports, particularly noting that, in several cases, Whilton activities are attracting people from other villages. The high quality of Whilton website was mentioned. The provision of the Newsletter in a hard copy is also still important as a large proportion of parishioners do not have access to computers. It was agreed that the quiet work carried out by various volunteers, who enhance the quality of life and the environment in Whilton, is much appreciated.

Roughmoor Spinney Management Group

Derek Brown reported that there had been one well-supported working party this year. Apart from this, individual volunteers make periodic visits to tidy up and keep the paths clear. There has been good growth of most of the new trees planted.

Gardner Landscapes have replaced part of the board walk and netted the whole, besides making and donating two seats in the Spinney. A safety audit is carried out quarterly. There are some boggy areas on the paths, which need attention this year. On 2nd May this year an early morning May walk through the Spinney, followed by breakfast, has been arranged as a celebration of the tenth birthday of the Spinney.

d) PARISH CONCERNS:

Trustees of Whilton Relief in Need Charities

This report is given in full elsewhere in this Newsletter.

Brington And Whilton Pre-School Report

Jenny Holman reported that the pre-school has continued to keep 15 children through the year, of whom 5 are from Whilton and the others from villages around. The staff offer a friendly atmosphere for learning and socialising. Following Government initiatives, the practitioners have undertaken much training to give the children the best start. There are plans to move eventually to Brington School grounds where outdoor play can be provided, but at present difficulties have arisen over obtaining planning permission.

e) PARISH CLUBS AND ASSOCIATIONS

Bellringers

Janet Bowers read the report by Justin Baker. The Whilton Ringers also attract members from villages around and aim to provide ringing for as many services in Whilton and the benefice as possible. New ringers are being trained and are making excellent progress. Whilton entered two bands in the Diocesan Guild Striking Competition, and the "A" Team came third. It is hoped to have an open evening in May.

Gardeners Association

A report by Ann Gilbert was read out. There are currently 30 members and the association meets bi-monthly on a Wednesday. Activities include both speakers and visits, and also at least one fund raising event each year, aiming not only to raise money, but also to bring the community together.

Local History Society

Anthea Hiscock reported that the society continues to meet bi-monthly on Thursday evenings, looking at aspects of Whilton history. The highlight was the medieval meal in January, based on foods grown in Whilton in 1388.

“honeymoon period”. The proposed expansion of Daventry is now at appeal with the main impact on Whilton likely to be the increased traffic and the doubling of capacity at the sewage works.

The results of a recent traffic survey have just been received, suggesting a considerable increase in traffic through the village. There was some discussion about the reasons for this, and the matter will be considered by the Parish Council.

Report of Footpath Warden

Maurice Clements reported that he had been contacted by Nick Wedgbrow of NCC about the possibility of creating a new path between the village and the Locks. It was agreed to ask the Parish Council to invite Mr Wedgbrow to a meeting, perhaps in July, to investigate this further. There is a new gate on the bridle path at the Locks and monitoring of problems on the footpaths continues.

The problem of a stile on the Brockhall border was mentioned and he agreed to follow this up. Gordon Emery said he was finding the NCC were less efficient at providing materials for mending styles than in the past.

Report of Highways Representative.

Jonathan Hanslip said the road at Whilton Locks had now been repaired and that it was important to keep up pressure about the drains. Some patching has been done on the road to Brington, but it is in a poor state.

b) POLICE

Neighbourhood Watch

The Clerk reported that Peter Bennett has resigned as Neighbourhood Watch co-ordinator. Derek Brown offered to carry on his duties temporarily, but another representative is needed.

PCSO Surgeries

The Clerk said that PCSO Lorraine Humfress will be reporting to the Annual Meeting of the Parish Council on 11th May. The meeting was also reminded that there is a PCSO surgery monthly in the Village Hall, which may be attended by anyone.

c) PARISH ACTIVITIES:

Village Hall Management Group

Mike Lewis reported that the financial position is sound, thanks to a bequest from the late Frances Drake. Quotes are being gathered for the refurbishment of the kitchen and store room floor and walls. Phil Waights has resigned after sterling service since 1988 and so a replacement will be sought to represent the village on the Management Group.

PARISH MATTERS MAY 2009

Since its regular March meeting the Parish Council has met three times. Two of these were extra meetings mainly for planning matters and the third was the Annual Meeting of the Parish Council on 11th May.

In March the extra meeting made no comments on the application for a replacement telecommunications mast at Norton Fields Farm, Watling Street in Norton, and was also an opportunity to hear about likely planning proposals for a farmhouse and buildings at Home Farm Grounds. The agent for John Townley attended the meeting to introduce this and answer questions from Parish Councillors. The 9th April meeting was to consider the application for a single storey extension and alterations to the shed roof at Field View, Wadd Close Lane. Councillors supported this application, considering that it is in keeping with the existing building, the alteration of the shed will enhance the appearance and the proposals have "proper regard to the scale, form, design and setting of a listed building". (Whilton Parish Design Statement 5.2.3.)

Between this meeting and the May meeting, the Parish Walk was carried out in April. Problems were noted to be reported to the Parish Council and the Highways contractors, and other matters noted for the Parish Council to follow up. The Parish Council also organized a litter pick, in which most Councillors were involved. As usual there was very little to find in the village, but several sacks full along the main road. It is hoped another litter pick can be organized to continue the work. Please watch the notice board for further information.

In April Greg Lye resigned as a Councillor. There is thus a vacancy, which is advertised on the boards. The following are your Parish Councillors at present, with the chairman elected at the May meeting:

- Mike Lewis, chairman
- Ken Bowers
- Jonathan Hanslip
- Nora Swinford
- Michael Thomas
- Susan Wingrave

At this Annual Meeting, Mike Lewis informed the meeting that the Clerk has tendered her resignation and will now be working her three months notice. He thanked the Clerk for her work. It was agreed to advertise the position in the parish first.

The schedule of assets and our insurance were reviewed. The dangerous allotments steps have been removed and the wall made good. It was resolved to approve the annual accounts for 2008/9. The balance brought forward on 1st April 2009 was £6594.49, and the precept for the coming year has remained at £5750. The Annual Audit Return was considered and Sections 1 and 2 were completed.

The first half of the precept has been received. All the allotments have been taken and all rents have been received. A variety of payments was authorized. These covered printing the Newsletter, installing the seats and new bin, moving the old one, making good the site of the old seat, removing the allotments steps, making good the wall there, lighting maintenance, electricity, the insurance premium, the subscription to Northants CALC, the fees for internal audit, Whilton's contribution to Daventry Villages Together, and the grant to Whilton Spinney Management Project, amounting to £2367.

PARISH RESPONSIBILITIES

The following people were confirmed or appointed to parish responsibilities:

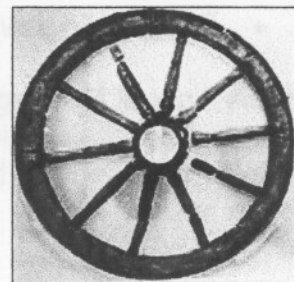
Highways Representative:	Jonathan Hanslip
Footpath Warden:	Maurice Clements
Salt Warden:	Sue Wingrave.
Representative on Spinney Management Group:	Jonathan Hanslip
Representative on Village Hall Management Group:	Mike Lewis
Village of Year Competition Co-ordinator:	Anthea Hiscock
Representative to Daventry Villages Together:	Michael Thomas
Representatives to WNDC:	Mike Lewis, Michael Thomas

It was agreed to thank Janet Bowers who has been Salt Warden for some years and has now given this up.

After some discussion about the Parish Design Statement it was agreed that Jonathan Hanslip should approach the original members of the team to see if they are interested in joining a working party to review the Statement.

NEW VILLAGE SIGN

Councillors confirmed that the choice of design for the new sign will be a cart wheel, with the old name *Wheal-tun*, and *Whilton*, probably in wrought iron. This was the suggestion of the Clements family. The Clerk was asked to follow this up when she is able to



CHANGES IN THE PARISH

Mike Lewis reported on the traffic survey carried out by the NCC. This shows an increase in traffic in the village of about 60% since the survey carried out by the Parish Council a few years ago. However, it does not show how much of this extra traffic is generated from within the village.

The report of the Parish Spring Walk was considered. The Clerk was asked to report the items concerning the roads and to request a new fence at South View once again.

The new street furniture has now been installed and it was agreed to follow up the need to treat some of the seats and boards in the parish. Max Middleton's offer to paint the seat on the allotments was gratefully accepted.



It was agreed to put a short questionnaire about people's concerns in the Newsletter. This can be used by the Parish Council in future planning.

POLICE

Report of Police Community Support Officer:

PCSO Lorraine Humfress reported that on the whole crime figures have decreased, but we should still remain vigilant. She has been holding monthly surgeries in Whilton, which she considers are useful, and will continue to do so. The use of Smart Water is recommended to protect property and leaflets were distributed. There was some discussion about speed monitoring, and Whilton is on the list to use the equipment.

Neighbourhood Watch Co-ordinator:



Mr Peter Bennett has resigned from this responsibility through ill health. The meeting gratefully accepted the offer by Mr Derek Brown to fill in the gap, but are aware that a new co-ordinator should be found. If you are interested in taking this on, please speak to Derek.

The next meeting of the Parish Council is scheduled to be in the Village Hall at 7.30 p.m. on Monday 6th July.

All are welcome to attend.

WHILTON PARISH COUNCIL NEEDS A CLERK



Following the resignation of Anthea Hiscock the Parish Council needs a clerk from mid August. The Council meets regularly 6 times a year and has extra meetings to consider planning applications as necessary. At present meetings are on Monday evenings. Training is available to national standards at local centres. If you are interested please contact me on 01327 842404 or Anthea on 01327 843319 for further details. Closing date is 22nd June.

Mike Lewis
Chairman, Whilton Parish Council

Tales of the Locks by Tom Price

The man who made Whilton Marina

In recent years Whilton Locks has been the home of several notable entrepreneurs. They include the designers at Saxon Lifts, world-famous for their specialised hydraulic lifts; Peter Ilsley, one of Britain's best-known craft potters; and farmer Roger Ashby, who emulated David Steele by diversifying into the burgeoning leisure industry.

David, who died on March 22 at his home near Carcassonne on the Canal du Midi in France, aged 77, created Whilton Marina 38 years ago. It is still one of the largest and most prestigious inland narrowboat facilities in the UK.

At his memorial service at Whilton parish church on April 23, we learnt that David was one of 12 children in a struggling tenant farming family.

He worked his way through farming, agricultural sales and house building with intense dedication and focus, eventually coming to the Locks to build the house which is still occupied by his wife Lucy, a talented gardener and wildlife enthusiast.

When he got his biggest brainwave, he could have been looking across the canal to a field flanking the railway embankment.

Others would have seen a piece of open land that had once been a playing field for Tate and Lyle sugar company employees. David envisioned an ideal base for people with narrowboats.

The "leisure boom" was in its infancy when the four-acre excavation was flooded with a million gallons of canal water in May 1971. It took nearly two decades before all of the 250 moorings were rented for craft owned by boaters from many parts of Britain. David Steele's marina was among the first of its kind in the country (Daventry District Council has controversially tagged on to the idea of building a marina in the town some 30 years later!)

When I moved into the nearby Windlass Cottage in 1972, there were few boats berthed in the marina. But David was always confident that it would flourish. During frequent discussions in his little office in the hut where the chandlery is now located, I discovered that he was fascinated almost to the point of obsession by creative business ventures and the stock market.

One day I found him and his son Richard pegging out an area adjoining the main road, and was told that they were going to build a new pub and posh restaurant. A few days later the steelwork was delivered. The Bannaventa



incorporated bricks from the nearby Georgian mansion which had been the home of a Tate and Lyle executive.

The large pub, opened in 1975, was named after the long-vanished substantial town or military staging post built in the area to service the Roman army.

Its main bar featured heads of Roman emperors sculpted in resin by a local artist. A claim was made by some historians that Saint Patrick was born in the Bannaventa settlement in A.D. 389 and there was a persistent local story, which I have been unable to confirm, that David Steele attempted to capitalise on this by offering small plots of the "birthplace" for sale to Irish Americans.

The pub boasted an enormous car park – David claimed it was the largest in the county – on which, in the late 1970s, he ran Sunday markets with up to 100 stalls. Police had to be called to direct hordes of visitors and the venture was eventually dropped after a long-running planning controversy.

Infuriated by the council planners, David retaliated by putting up as an Independent on the district council and winning a Daventry town ward seat after personally canvassing all its residents. Not surprisingly he was shunned by the political establishment and eventually lost heart and did not seek re-election.

His huge Bannaventa pub was also a difficult venture. It was opened by directors from the Hook Norton Brewery, and for a while he ran it himself. But he was not temperamentally a pub landlord.

The pub and restaurant, which later incorporated a popular nightclub, was let to a succession of managers and tenants. Some went bankrupt. The most successful was Ken Gane, who renamed it The Locks. After Ken and his wife Jean left in 1991 the building became the flourishing Whilton Locks Carpet Centre.

David Steele also founded a thriving caravan and leisure enterprise at Cosgrove, and a similar business at Overstone Park. Another venture, holiday chalets in the south of England, was not as successful and he eventually moved to the warmer climate of southern France. The marina and other leisure businesses were transferred into the capable hands of Lucy and their five sons and daughter.

At the marina the Steele family have been responsible for many major improvements to meet the needs of the growing number of boaters from all over the world who ply the Grand Union Canal through Whilton parish.

- *Next issue: The lock-keeper who "talked" to fish.*



WHILTON GARDENERS' ASSOCIATION



The visit on 1st April to Mr Bert Manton demonstrating "Rural Crafts" was a wonderful interesting evening. On arrival we were given a warm welcome from Bert and the large wood-burning stove.

Bert demonstrated the art of making many things from wood including hurdles, gates, chairs, tables and even how to restore a "Gypsy Caravan". My favourite was the wooden chrysanthemum flowers.

We also watched a rare video called "The Chiltern Boggers" on how they harvested beech wood to make the legs for the famous Windsor Chairs in the nineteen hundreds, it was fascinating.

Bert's care and enthusiasm of all things wood was infectious and all too soon came to an end but not before sampling tea and biscuits in the Museum Room. We hope to arrange another visit so that those who were unable to attend will have the opportunity at a later date.

* **3rd June** Mr Neil Phillips will be giving a talk and slide show on "Landscapes" Neil is well known to all our members for his excellent photography and ease of delivery.

* **14th June** Joint visit with Whilton Photography Club to
COUGHTON COURT, Alcester, Warwickshire

Coughton Court is a magnificent house with award winning gardens including a Walled Garden, Bog Garden, Orchards, Riverside Walk, two Churches, Shop, Refreshments and Plant Sale.

Admission free to all Club Members (non Members £3.00)
Transport available by cars. Meet at Village Green at 10.30 am

* **4th July** Independence Day Themed Garden Party at "Wood View"

Details on Village Noticeboard

New Members welcome to join us

Olive (general dogsbody) **Contact No. 07921429228**

Other Committee Contact Nos. 01327 843169 & 01327 842401

ST ANDREWS CHURCH

JUNE 2009

7TH	10.00 AM	BENEFICE SUNG EUCHARIST AT <u>EAST HADDON</u>
14TH	11.00 AM	FAMILY SERVICE
21ST	11.00 AM	FAMILY SERVICE
28TH	11.00 AM	HOLY COMMUNION

JULY 2009

5TH	10.00 AM	BENEFICE SUNG EUCHARIST AT <u>BRINGTON</u>
12TH	11.00 AM	FAMILY SERVICE
19TH	9.15 AM	HOLY COMMUNION
26TH	11.00 AM	FAMILY SERVICE

CHURCH NEWS

INTERREGNUM

On March 24th the six representatives (one from each parish in the benefice) met with the Patrons at Althorpe where they interviewed two candidates for the position of Rector to the Spencer Benefice. Unfortunately no appointment was made and so we are still in the state of interregnum and await further news from the Archdeacon as to the next move. At this stage it looks as if it might be by search rather than advertising again.

In the meantime we are very grateful to the retired clergy who are taking some of the services on Sundays and to the Rector of Pattishall Revd Paul Broadbent who conducted the memorial service held here at St Andrews in thanksgiving for the life of David Steele who was the founder of Whilton Marina.

Hopefully being in an interregnum does not deter one from attending services as we get both excellent and a variety of speakers.

FUNDING RAISING

The Car Boot was a very successful and enjoyable occasion raising £639.01 for church funds The weather was good this year dry and sunny and there was a large number of booters both from the village and elsewhere. Grateful thanks to Linda Treacy for organising, Gordon Emery for permission to use Wadd Close field, Mary Emery and helpers for refreshments and those who car parked and kept the event safe.

We still need to further fund raise for 2009. If you have any suggestions for events please contact one the following committee members Linda (843034) Mary (842741) Phil(844731) Teresa (843988) or Janet (842851)

If you would like to join us on the committee please contact Janet.

CHRIS GOBLE

On the 9th May the Daventry Branch bell ringers had their annual coach outing to the Evesham area and as I organise the towers we visit I made the last tower of the day on the way home at Ilmington so I could meet up with him Sharon and the children. They appear to have settled in to their new life very well . It is a lovely area on the edge of the Cotswolds where they have a very nice Rectory with a big garden ideal for the children

Janet Bowers



USED STAMPS



Many thanks to all who contributed to the box of stamps sent to the RSPB. In future stamps will be given to Daventry Rotary Club whose members support local charities

If left for Trudy, please leave on the windowsill by the back door of the Old Plough
Please carry on saving

Teresa & Trudy

Whilton Photographic Club



Upcoming Meetings

The dates for the meetings for the remainder of 2009 are:

9th June
14th July
11th August
8th September
13th October
10th November
8th December

All meetings will start at 8pm and be in the Village Hall.

Recent Events

Our April meeting saw club members in Stoke Bruerne for the St George's Day celebrations at the Boat Inn. The challenge was to take photographs of..... morris dancers! After getting over the initial shock, the group set to and by the end of the night had taken lots of photographs and had a great time. There was even talk of setting up a Whilton morris team – but I won't say who said it, would I, Jonathan?

Models Wanted

We are still looking for people (you, your family, your friends, etc.) to come and be models so that the club members can practice taking photographs. Come and experience a one hour studio session with us and we will let you have copies of some of the images we take FREE of charge – yes that's high quality studio photographs for FREE. Just call Neil Phillips for more details.

And Finally

If you have recently bought a new camera for and are wondering what all those buttons do, or if you want to know how to get better photos from your camera, why not join the Whilton Photography Club?

Neil Phillips (Tel: 01327 844182, E-mail: neiljphillips@hotmail.com)

NORTHAMPTON COUNTY MOBILE LIBRARY SERVICE

VISITS WHILTON EVERY THIRD TUESDAY AND STOPS OUTSIDE THE OLD PLOUGH, MAIN STREET AT 9.15 AM UNTIL 9.30 AM.

THE DATE FOR JUNE IS 16TH AND JULY DATES ARE 7TH & 28TH

NEIGHBOURHOOD WATCH

Holiday Check List

Please be extra vigilant over the summer holiday season. Remember that most burglaries happen quickly and whilst the house is empty.

1. **Secure all doors and close all windows.**
2. **Lock garages and sheds.**
3. **Lighting – leave an automatic time switch to operate on one or two lights during the evening or arrange for someone to come in and close curtains.**
4. **Burglar alarm – always set before leaving home.**
5. **Tell neighbours – ask someone to keep an eye on your property.**
6. **Close front and side gates.**
7. **Report anything suspicious.**

Finally, do not forget that when you are either working or relaxing in your garden, the house and the cars parked on the drive are just as vulnerable. Please ensure maximum security is maintained at all times.

Whilst there has been no reported crime in the village be aware that it is happening in neighbouring villages.

ANY SUSPICIOUS OR ANTI-SOCIAL BEHAVIOUR CAN BE REPORTED ON THE NEIGHBOURHOOD WATCH DEDICATED PHONE NO. 01604 432436 OR NORTHAMPTONSHIRE POLICE CAN ALSO BE CONTACTED ON 08453 700700

NEIGHBOURHOOD WATCH COORDINATOR REQUIRED.

As reported elsewhere in this newsletter, Peter Bennett has resigned due to health reasons and we urgently need someone to take over this duty and whilst very important, it is not particularly time-consuming.

As Deputy Coordinator, I have taken over the role on a temporary basis. If you are interested in taking over this duty, please contact me on 01327 842968.

Derek Brown (Deputy Neighbourhood Watch Coordinator).

Dog Fouling

There has been fouling on the footpath down the bottom end of the village, both on the bend outside Holly House and near the Village Hall where those going to the hall can walk in it. This is not the fault of the dog but irresponsible owners who should clear up after them if an accident happens.

SUMMARY OF EVENTS

Wed	3 rd	June	7.30 pm	WGA – village hall -8.00pm – Landscapes by Neil Phillips
Sat	6 th	June	9.30 am	Police surgery in village hall
Tues	9 th	June	8.00 pm	Photographic Club in village hall
Sun	14 th	June	10.30am	WGA & WPC outing to Coughton Court
Tues	16 th	June	9.15 am	Library van in village outside The Old Plough
Thurs	18 th	June	12.30 pm	Social Lunch in the village hall
Mon	6 th	July	7.30pm	Whilton Parish Council Meeting in village hall.
Tues	7 th	July	9.15 am	Library van in village outside The Old Plough
Tues	14 th	July	8.00 pm	Photographic Club in village hall
Thurs	16 th	July	7.30 pm	Whilton History Society in village hall – “The Tale of Tommy Adams”
Thurs	23 rd	July		DEADLINE FOR AUG / SEPTEMBER NEWSLETTER Please hand in your contribution before this date or otherwise we cannot guarantee it will be included in the next edition.
Tues	28 th	July	2.30 pm	Tuesday chat in village hall

The Whilton Newsletter is published bi-monthly and circulated free to every household within the Parish boundary. The costs are met by the Parish Council. The Editors are:

Derek & Shirley Brown - Cherry Orton, Main Street. - 01327 842968

Email: - d.brown253@btinternet.com

Please supply a disk or memory card or disk with your contribution if not emailed so that we can manipulate the text to fit if necessary. If you do not have a PC or typewriter the editors will type the articles as we have always done in the past.

Articles of local interest, poems, recipes, puzzles or drawings will always be considered for inclusion in the Newsletter.