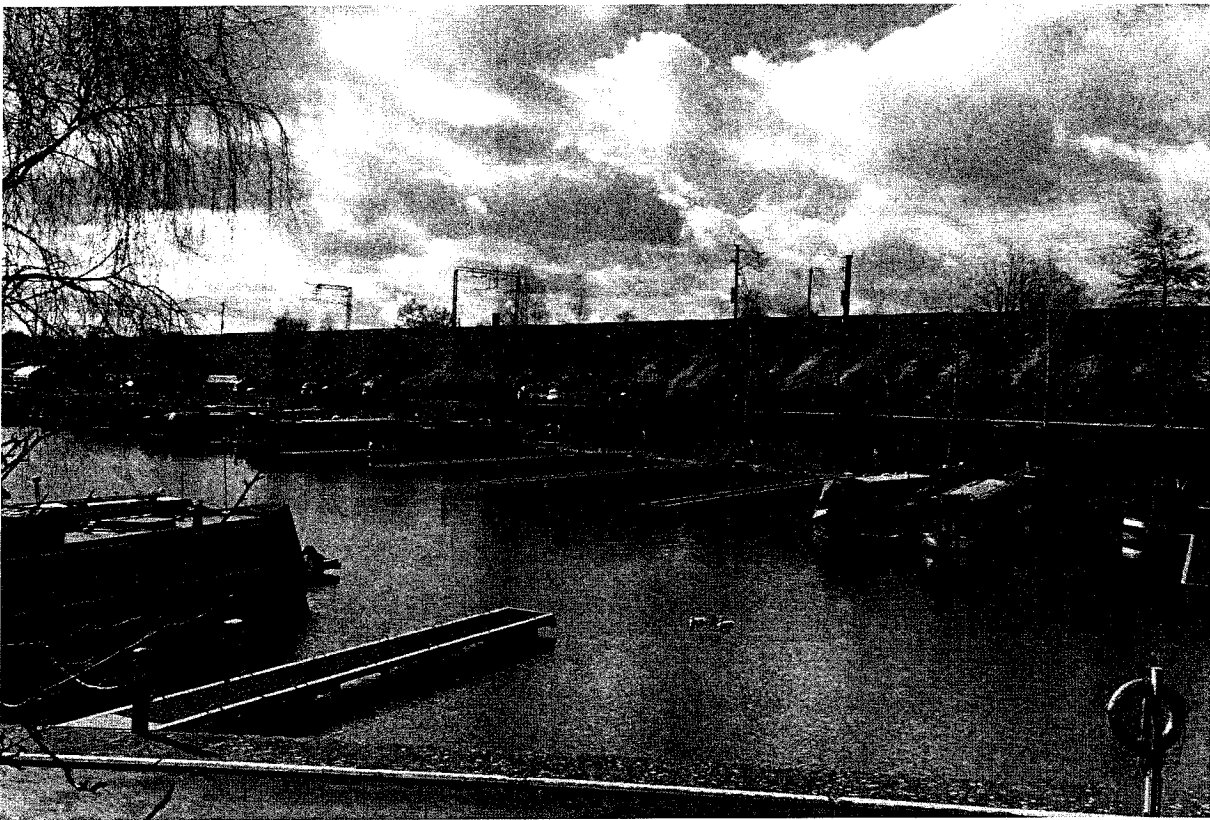


WHILTON NEWSLETTER



SPRING 2015

MARCH - MAY

Letter from the Editors

March - May 2015

As spring begins we welcome new residents who have moved into Whilton over recent months and hope you will enjoy your first spring here. For other parishioners warmer days may bring the urge to freshen up our homes in a flurry of spring cleaning. As we do so, we might give a thought to servants and housewives of earlier times, who had to start work by combining ingredients to make their powders and potions for the task.



In 1907 Mrs Beeton recommended this recipe for furniture polish. *Boil one pint of soft water; let it get cold; shred one ounce of white wax and one ounce of Naples soap into it, stand it in the oven until all is melted; add one pint of turpentine slowly, stirring as it is dropped in; stir it until cold, bottle and cork closely; it is fit to use the next day.*

To clean a carpet she suggested:

Melt one pound of yellow soap and half a pound of soda in an oven; then mix them well in a gallon of water to which add one ounce of nitric acid. With a clean scrub-brush wash the carpet well from seam to seam with this mixture, and rinse it off quickly with clean soft water. Do only a small piece of carpet at the time, and rub dry with a clean cloth as much as is washed.

If you wish to try this, do report back to us!

Meanwhile everyone is welcome to improve the environs of the village by joining the Parish Council Litter Pick on 21st March. Whilton gardeners may also be inspired by the slide show with music on Wednesday, 1st April.

We wish all our readers a Happy Easter and Spring Holiday.

The Editors

WHILTON PARISH COUNCIL

From the Clerk's Pen



I always think that spring is such an exciting time, a time for new beginnings, and I eagerly await its arrival after the dull and dreary winter! There have also been a fair few 'new beginnings' in the local council world.

For instance, smaller councils, those with a turnover of less than £25,000 which includes Whilton, will shortly be covered by a new 'Transparency Code'. This Code replaces the requirement for an external audit, although councils will still need to have an internal audit done. One of the requirements of the Transparency Code is that Councils will need to have their own dedicated websites to display all financial documentation, in addition to agendas, minutes, policies, etc. from July 2015. Our aim is not to take anything away from the village website and you will still be able to find the agenda there, if you so wish. The village website will provide a link to the Council's new website, although I should have more news on this in the next newsletter.

Another new initiative is that the Police are rolling out a Scheme for Volunteer Parish Special Constables across the country. The aim is to have a 'Special Constable' in every village. They are looking for middle aged, reasonably fit resident volunteers who have 16 evening hours per month to commit to the role of Special Constable for around 4 villages. Volunteers will be provided with police uniforms and equipment; have the power to make arrests and will receive full training. Patrols are done on foot to create a visible presence in villages, as prevention is key. The purpose of the role is not to replace police officers but to supplement their services. For more information see <http://www.northantspolicespecials.co.uk/>. Any residents interested in the role may also contact me, and I will put them in touch with the recruitment team. A member of this team will also be present at the Annual Parish Meeting on Wednesday 15th April.

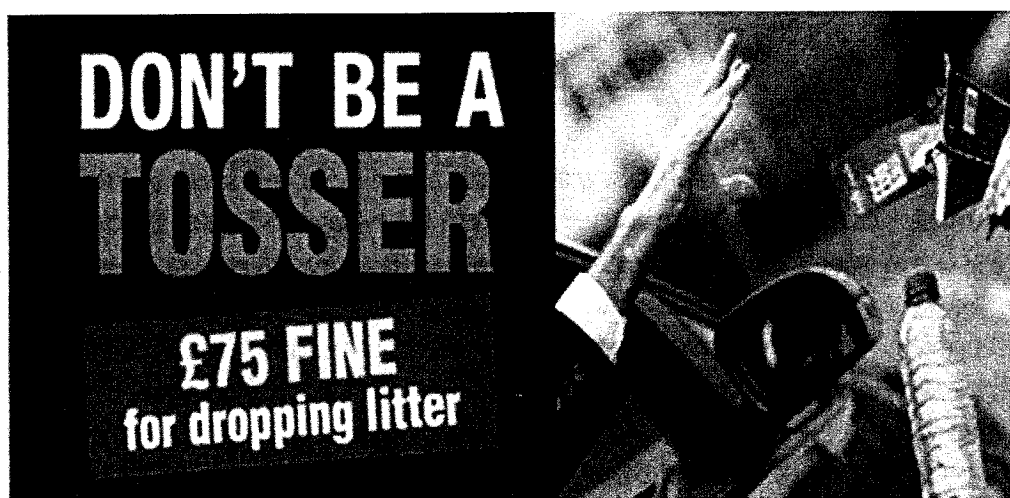
PCSO 'have your say' days have replaced Community Panel Meetings and Whilton's next 'have your say' day is scheduled for 18th April 2015 at 12 noon at the village green, where you will have the opportunity to voice any concerns you may have. PCSO Sarah Gray has left the force and I've not received details of her replacement as yet, but hopefully they'll have someone in office by then.

Although Daventry District Council (DDC) is responsible for clearing litter, rural and village roads/verges are being treated like poor relations! The Parish Council recently wrote to DDC and we gave them specific information about litter hotspots along our country roads, courtesy of Cllr Hanslip who regularly cycles along them, and they have promised to attend to it – time will tell!

The County Council and the District Council are mounting a huge anti-litter campaign, with the slogan “Don’t be a Tosser.” To spruce up our village before the abundant growth of springtime obscures litter, the parish council has arranged a litter pick in and around Whilton on Saturday 21st March. Many hands make light work and we would like to invite residents to meet join us for a couple of hours that morning, starting at 10:30 from the Village Green. Bags and equipment will be provided.

Erica Fothergill

Parish Clerk



For more information please visit our website www.recyclefornorthamptonshire.co.uk



DON'T DO IT! Litter is your responsibility – either use a litter bin or take it home for recycling or disposal in the wheeled bin.

£4.5 million per year is spent by Northamptonshire authorities cleaning the County's highways, verges, central reservations, town centres, footpaths and open spaces.

What a WASTE of YOUR money!!

WHILTON CAROL SINGERS

would like to thank everyone for supporting them on Tuesday 16th December and giving to them so generously.

We were able to give a donation of £130 to Cynthia Spencer Hospice and £130 to the Cardiology Department of Northampton General Hospital



Bell Ringing - Give it a go.

The benefits of Bell Ringing were highlighted a while ago during a recent study. Please see the link : <http://www.bbc.co.uk/news/health-20691056>

If you fancy having a go at ringing, not just for keeping fit physically - but mentally also, then please call Janet Bowers or Justin Baker to arrange for an informal trial to see what's involved.

We ring on Monday evenings from 19:30 to 21:00. Please come along to see how it's done.

Justin Baker (01327 844263)

Janet Bowers (01327 842581)

WHILTON VILLAGE HALL 200 CLUB 2014-15

DEC 2014

1 ST PRIZE	M Kane	026	£45
2 ND PRIZE	J & S Hanslip	129	£25

JAN 2015

1 ST PRIZE	A Hill	188	£45
2 ND PRIZE	T L Consultants	074	£25

FEB 2015

1 ST PRIZE	R Gardner	065	£45
2 ND PRIZE	G Martin	109	£25

Congratulations to all the prize winners



TUESDAY CHAT 16th DECEMBER 2014



This was our Christmas meeting and was well attended and the decorated table and Christmas snacks were very much appreciated. The 'chat' covered the very good Concert performed by the local choir and ideas for decorating the Christmas trees for exhibiting in the church on 21st December by village associations including Tuesday Chat.



TUESDAY CHAT 20TH JANUARY 2015



A very good turnout again – in fact it was the most we had ever had!! It was lovely to see some new faces and also to welcome little Hugo again with his mother and mark his progress. He is now able to enjoy a taste of the cakes and biscuits.

Another enjoyable get-together with many subjects covered in the 'chat' and the usual delicious cakes. The January and February 200 Club prizes were drawn and the remaining one for the year, March 2015, will take place during the March Tuesday Chat.

FUTURE SOCIAL EVENTS

*The next **Tuesday Chat** will take place on Tuesday 31st March 2015 at 2.30 p.m. Please come and join us for cakes and conversation– you're very welcome. A small charge of £1.50 towards expenses will be made.*

*There will be a **Social Lunch** on Tuesday 28th April 2015 with the usual two courses and extras. The time is 12.30 for 1.00 pm and the price for this will be £5.*

*On Tuesday 19th May there will be another **Tuesday Chat** - everyone welcome, please come and join us.*

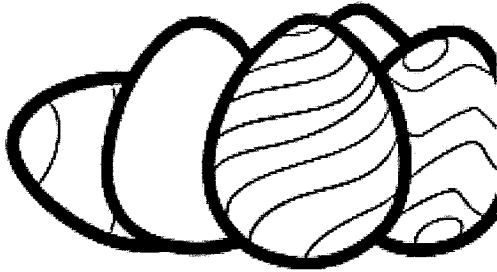
NEWS FROM ST ANDREW'S



*Part of a drawing by the late
Clifford Ellison*

Christmas seems to be a long time ago but it is worth reporting that the Christmas Tree Festival and Carol Service was a great success again this year and was well supported.

At the time of writing we have just held the Valentine's Day Coffee Morning. Thanks to all who baked a cake and took the time to attend this event. We plan to hold coffee mornings on a regular basis during the year. It gives everyone the opportunity to find out what is going on in the village, whilst helping to raise funds to cover the costs of running the church. Watch the notices for the next one.



Forthcoming events include Mothering Sunday on 15 March. Our service will be at 9:15 a.m. and we will be handing out flower posies – any volunteers to help make these would be appreciated

Easter is also just around the corner and our main service will be on Easter Sunday.

Details have still to be finalised but I can promise Easter Eggs for both children and adults.

The church (and the building) is a key part of our village but it should not be taken for granted. There will be many opportunities for you to participate during the year but attendance at services is only a small part. You can support in other ways – by taking part in our fund raising events, cleaning the church, arranging the flowers, and helping to maintain the churchyard. If you can help please let me know.

It would also be great if we could use the building more regularly. The Bellringers meet on Monday nights and Whilton Warblers on Tuesday nights but that leaves many other opportunities. If you have any ideas, we are always keen to discuss these.

I can be contacted on 843380 or by email: Jbrierley1@aol.com.

Jon Brierley, 7 Langton Rise



LETTER FROM THE RECTORY

Dear everyone,

Now we are in Lent. Lent is a preparation for our celebration of Easter. Jesus in the wilderness was his preparation for ministry. I guess for most of us Lent is not our favourite time. Traditionally we give up something – or in more modern times, take on something – neither of which feel comfortable. Even less comfortable is the idea that we should confront our failings – and that is the heart of what Lent is about.

But unless we confront our failings, realise our wrongdoings and our lack of doing what we should, we cannot appreciate God's grace in forgiving us. The joy of knowing that we are forgiven is our Easter joy. We cannot appreciate that Easter joy without recognising that we are not the perfect people we would like to think ourselves.

May our uncomfortable times of Lent lead to our joyous times of Easter!

Sue

Our rector, Rev Sue Kipling, can be contacted at suekipling@btinternet.com

the charity for
your community



CITIZENS ADVICE DAVENTRY & DISTRICT

Free, confidential, impartial and independent advice and information on a wide range of subjects including: DEBT, BENEFITS, EMPLOYMENT, HOUSING, FAMILY ISSUES, DISABILITY, CONSUMER, etc

Whoever you are; whatever the problem.....

10am-3pm, Mon, Tues, Wed, Fri. No appointment needed.

The Abbey, Market Square, Daventry, NN11 4XG

Adviceline: 03444 88 9629

Benefits & Disability advice: 01327 701646 (mornings)

Email advice via website: www.daventrycab.org.uk

A full range of information is also available at: www.adviceguide.org.uk

A WHILTON SONGBIRD

For Linda Treacy of South View music and singing is a very important part of her life. As a pupil in secondary school in Oldham her music teacher encouraged her in playing the cornet and singing in the choir. This was manageable while she was still at school. By sitting in a strategic position she could slip into either the choir or the orchestra during concerts. As an adult this was not so easy and a choice had to be made. The cornet took second place.

For a while owning a horse and showing her bulldog took priority, but on moving to Northamptonshire, a colleague in Northampton introduced her to the Cantari Singers. She has not looked back, having been their chair for about 8 years, and is now their treasurer. She is usually a soloist or part of a duet in their concerts. She has especially enjoyed the buzz of singing with them and massed choirs in the Royal Albert Hall, in particular "Hiawatha's Wedding" by Samuel Coleridge-Taylor.

Wherever she goes Linda gets involved in singing. When her daughter Danny was very small Linda sang at the Dergate with others from Parkside School. For a while she sang with the Overstone Singers and had the experience of making CDs with them before the choir disbanded. As a member of Daventry Players, she loved the musicals they put on.

This activity has been replaced by singing with the Long Buckby Community Choir, "Elation", which meets on the same night. This is a large choir of about 80, and a contrast in some ways with Whilton Warblers, which is about a year younger. Linda had hoped for some time that Whilton might have a choir, and was very excited when there was support for the idea in summer 2013. Her enthusiasm is infectious and has inspired others to have a go. She has high hopes for what Whilton Warblers might achieve.

Asked about her favourite music, she has a twofold answer which reflects her wide musical interests. She loves "Panis angelicus" by César Franck, but also music from the 1960s such as the Everly Brothers and Simon and Garfunkel, especially when she can harmonise.

So if you hear a clear soprano voice floating over Whilton, it may well come from the top of South View...





**WHILTON
GARDENERS' ASSOCIATION**



A note from Olive.

Hello Everyone

As winter slowly fades, the gardens are now waking up (which is a little more than I am)! It's really lovely to see the spring flowers peeping through the ground, such as snowdrops, crocuses, aconites and daffodils, plus a few other beautiful plants.

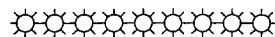
This is now the time to prepare the soil, tidy up the garden and to plant seeds for your future enjoyment.

Our Annual General Meeting was held on Wednesday 4 February which was extremely well attended, with around four new members joining us, to make a most enjoyable evening, especially the quiz which was great fun!

I would encourage newcomers to the village to join this very sociable garden club and to take advantage of our regular meetings, summer garden party, speakers and occasional garden visits, not to mention the annual Christmas supper, which is free to members. Please contact Maurice Archer, our new Membership Secretary, on 843081, or Roy Haynes, Chair on 844673.

Our next meeting will be in the Village Hall on Wednesday 1 April, at 7.30 pm when Geoff Stone will be presenting a slide show to music.

Olive



**ROUGHMOOR
SPINNEY**



Spring is a good time to see colour on the wet woodland floor of the spinney, before the leaf canopy shades the area. Boots are recommended in most seasons.

The pale pink of the leafless butterbur should be followed by the bright pinks of ragged robin, herb Robert and campion, and then the deep red of figwort. Among the yellow flowers on the moist ground will be marsh marigold, the citrus yellow of celandines, golden buttercups and the small starry flowers of crosswort. The blue flowers of spring vary each year, but we expect to see forget-me-nots, the spires of bugle and the bright blue of brooklime.

HISTORY HOTCHPOTCH

Whilton Local History Society met on 16th January for a "History Hotchpotch". The roots of the hotchpotch are lost in the mists of time. Some believe it derives from the Dutch "hutspot" and was first prepared with oddments of food at the siege of Leiden in 1574. However, since Chaucer mentioned a hotchpotch in the 14th century, it must be older than that. Most likely it first began as a mixture of meat and vegetables cooked slowly in the pot which hung over the fire in earlier times.

We had two different hotchpotch recipes to taste, besides a vegetarian option, which would have been a "fatherless" dish, one served when there was no one earning enough to buy meat. All our hotchpotches included potatoes, although these were not introduced until Elizabethan times. It may well be that the earlier hotchpotches contained a staple of parsnips.

The hotchpotch was followed by a choice of different apple cakes for dessert, some eaten with cream. Mary Emery's recipe for apple cake is included in this issue.

Accompanying the meal was a hotchpotch of queries about Whilton's past. You may like to try the following two. You will find the answers below the apple cake recipe.

John Townley, parish clerk of Whilton who died in 1836, had a business making and selling:

- a) jam
- b) ketchup
- c) chutney

A famous organ builder was born and spent his early childhood in Whilton. What was his name?

- a) John Abbey
- b) James Church
- c) William Minster?



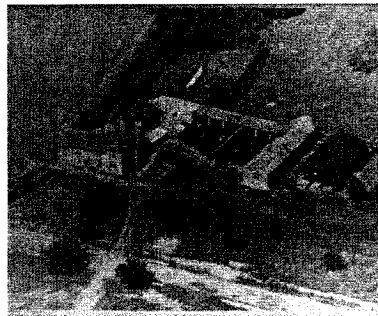
History Hotchpotch evening

WHILTON LOCAL HISTORY SOCIETY

**Friday, 27th March 2015
7.30 p.m. in the Village Hall**

The meeting will begin with the AGM, followed by:

THE MILLS ON THE STREAM **Stories of Brockhall, Muscott and Whilton Mills.**



Whilton Mill 1957

All are welcome. Entry : £1.50

Whilton and Buckby Locks Association

The Memorial Garden at Lock 12 looks beautiful. There are masses of snowdrops (not your ordinary little ones, but taller, large flowering ones!) in clusters dotted throughout the plot. The shrubs and other plants look as though they have survived the winter well, so far, and even the laurel which looked a bit yellow and sad is now leafing up and a good green.

A big thank-you to the chaps who went forth and did a really great job on the hedge between Top Lock and New Bridge Cottages. Thanks lads, it is great to see it looking neat and cared for again.

Thanks also for the hedging work down by Lock 8 - it's all a great start to another volunteering year. Now let's hope the local bird population will move in and enjoy their smart surroundings. There's plenty of pairing-off going on in the garden and on the water, so spring is just around the corner - we hope.

(Taken from notes by Sue and Geoff Woodward of the WBLA)

DURHAM APPLE CAKE

This delicious apple cake was cooked by Mary Emery for the History Hotchpotch evening, and this will give you an opportunity to try it too.

Ingredients

4 oz (100g) Soft margarine
8 oz (225g) Caster sugar
2 Eggs, beaten
8 oz (225 g) Self raising flour
1 lb (450 g) Mixed dried fruit
1 level teaspoon Mixed spice
Grated rind and juice of 1 lemon
2 level teaspoons bicarbonate of soda
Pinch of salt

Method

1. Cream margarine and sugar together in a large bowl until the mixture is light and fluffy.
2. Add all the other ingredients and mix well.
3. Line an 8 inch (20cm) square cake tin or an oblong tin 10inch (26cm) x 8 inch (20cm) with greaseproof paper and put the mixture in it.
4. Bake cake in a preheated oven at 350° F, 180° C, Gas no.4. Bake square cake for about 1 – ½ hours, and oblong cake for about 45 minutes, until a skewer inserted in the centre comes out clean. Cooking time for a fan oven may vary.
5. Sprinkle top with caster sugar while cake is warm.
6. Turn cake out of tin when cool. Cut in slices to serve.

This is a splendid family fruit cake which can be frozen.
It is best cut into slices before freezing, so that pieces can be quickly thawed.

Answers to the two hotchpotch questions:

John Townley who died in 1838 had a business making ketchup.

John Abbey was born here in 1786 and spent his early childhood in Whilton where he heard the "sweet toned" organ in the church. It was probably his father who built the Whilton organ.

INTRODUCING GINNY



For fourteen years or so Richard and I were familiar figures out walking with first one and then two West Highland White terriers. When we lost them both, one quite suddenly, last year, our lives changed for the worse. However, we're happy to say that Langton Cottage is once again home to 'Westie-ness'. We have downsized somewhat - we have one small, 14 weeks old puppy - but what she lacks in size and capacity, Ginny makes up for in speed, inventiveness and the happiness factor. We're glad to say we are now out and about in Whilton again - all three of us!

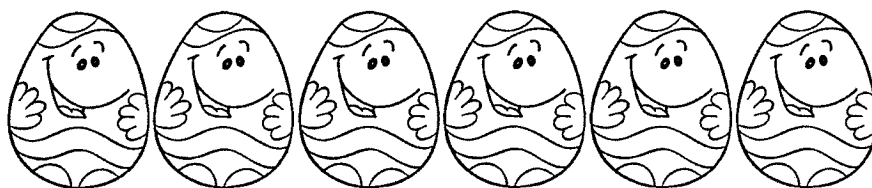
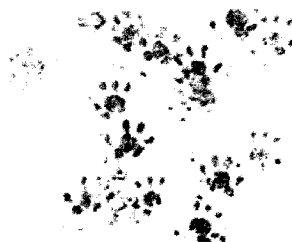
Ann Gilbert

WILDLIFE ALONG THE CANAL

Whilton and Buckby Locks Association suggest that there is much wildlife to see if you walk the towpath quietly or go by boat.

Look out for signs of these mammals as spring develops into summer:

Hedgehog, common shrew, mole, Daubenton's bat, common pipistrelle bat, brown long-eared bat, fox, stoat, weasel, polecat, American mink, badger, muntjac deer, grey squirrel, bank vole, short-tailed field vole, wood mouse, brown rat, house mouse, brown hare and rabbit.



1. **How did the egg get up the mountain?**

It scrambled up!

2. **How do comedians like their eggs?**

Funny side up!

3. **Why do chickens lay eggs?**

Because if they dropped them they would break!

Whilton Warblers – Winter Season

O, Baby, it's so hard to learn this song

"Let's try it again from ..." "No, no, no! The boys must come in together." "The Altos need to be stronger, more confident." "Again. From the beginning."

O Baby it's cold outside. This song has dominated our rehearsals for the last few weeks before the Christmas concert. We've tried different arrangements and had settled on a simplified version but now Judit has added some twiddly bits on the end. So now, not only are we messing up the body of the song, we're struggling with the end bit too. Oh, how we suffer for our art!

Only joking. We are so lucky to have Judit as our Musical Director, not only is she a talented singer and musician she is also an excellent teacher with high expectations for our standard of performance. We try desperately hard to meet her expectations, we so want her to be proud of us.

To help us in our endeavours Judit has recorded several of the songs singing the Soprano, Alto and Tenor parts so that we can pick the appropriate recording. Downloaded onto computers, tablets, i-pods and CDs this music is now accompanying us in our cars, whilst we're cooking, vacuuming, walking the dog, mucking out the stables. We're practising at every opportunity. No one wants to be the person who lets down the choir at our Christmas concert.

We provide refreshments after each concert and having been tasked with procuring the wine for the Christmas concert I'm particularly pleased to have found Hungarian red and white in honour of our leader.

Disaster Strikes

It's Monday, the concert is on Friday and I have a chest infection. I'm not so ill that I can't go to work, though frankly I would prefer to be snuggled under my duvet, but I'm a bit croaky and if I talk too much I start coughing. It doesn't bode well. To be fair I'm not a great loss to the choir but the altos are outnumbered by the sopranos and so they need every voice to do its bit in the songs that are sung in more than one part.

I go to the practice on Tuesday evening and give everyone a wide berth. I don't sing but at least I can observe and learn a little more about the musical arrangements just in case I'm fit for Friday. Sitting in various pews I can also check sound levels – which seem fine to me.

Linda announces that she has just nine unsold tickets meaning that 111 tickets have been sold. Unbelievable! I also hear a rumour that a reindeer will be making an appearance at the concert – can it be true?

I can't wait and I so want to be part of it but as the week progresses I show no signs of improvement. Ah well, even if I can't sing perhaps I can take some photos and videos to share with fellow members.

It'll be all right on the night

It's four o'clock and I'm still extremely disappointed to be suffering with my chest infection but I decide to have a little practice sing. My voice isn't great but it's no worse than usual. I'm going to sing at the concert after all, if I can't talk all weekend it doesn't matter (some might even suggest it could be a blessing!) As usual we assemble early in church for a final run through and we hear the soloists for the first time. Once again I'm impressed by their bravery – and talent - though some of them confess to nerves.

The concert goes well, a full house once again. Martin Heath accompanies us on keyboards leaving Judit free to conduct the choir. We get through *Baby it's cold outside* without any major mishaps and above all we enjoy singing our hearts out. Feedback from the audience is encouraging and many comment on the improvement and increased complexity of the performances.



And yes, Rudolph the red nosed reindeer appears on cue as we sing his song. Okay, so it was Sooty the Shetland pony in disguise again but he's such a seasoned performer and takes it all in his little stride.

Choir practice is every Tuesday in the church, just turn up between 7.00 and 7.30pm or call Linda on 01327 842034 for more details.

(Bring a mug if you would like a hot drink.)

If you decide to join the cost is £3.50 per week, payable in advance per term, with concessions for people in full time education.

Date of next concert to be confirmed.

FAMILY

Do you recognise these two Whilton residents?

Jane and David Stoddart have recently returned from a trip to the Far East.



We welcome Alison and Jeremy James back to Whilton

Two Years in Singapore

Our last adventure before dementia turned out to be a great opportunity for the whole family...and for many friends who visited. A chance to explore the beauty of South East Asia first hand, for one. Highlights included the amazing temples of Angkor Wat, the turquoise waters off Krabi, a dawn raid with some fellow Whiltonians on the summit of Mt Kinabalu in Sabah, Borneo, some ecotourism on a small Indonesian island called Nikoi and a visit to the fabulously populated reefs of the Gili Isles near Lombok. Hannah and Abi loved the diving with Dad but this came a close second to the many roof top bars to be found in Singapore itself!

Life on the 19th floor of a condo near Holland Village was a far cry from the peace of Lower Farmhouse. But we soon embraced the many wonders of life in the Little Red Dot. No dishwasher or aircon in the kitchen was a great reason to join the other 5 million Singaporeans at the hawker food stalls ... for chicken rice and chili crab. We loved the 50m swimming pool and played a lot of tennis ...despite the extreme humidity. Other delights included concerts in the Botanical Gardens and open air theatre at Fort Canning, the Grand Prix night race, soaking up the atmosphere in Chinatown and Arab Street ...

Singapore Cricket Club, the British Association and Raffles Marina all afforded opportunities to meet expats outside the bank and plenty of sports to enjoy. We also had introductions to some born and bred Singaporeans, who could really give us the inside track ...especially to the best restaurants! Above all we met so many people from so many corners of the earth among our colleagues at Barclays and Tanglin Trust School, who all enriched our lives in one way or another. Our neighbours, "Kiwi" Craig and "Aussie" Kellie should get a special mention... the biggest Anglophiles on the planet! We dedicated our journey home to them... two weeks in NZ and a few days in Sydney, while these were still within reasonable reach!

It was truly an experience we would not have missed for the world.

FAMILY

MARY HOUGHTON

We send our condolences to the family of Mary Houghton, who died on Boxing Day, 26th December.

Mary was born in Daventry on 6th February 1927, and was the daughter of Shelah and Blanche Townley of Churchgate. She grew up in Whilton and attended Whilton School. She became the wife of Charlie Houghton, who was in the Police Force, and they lived elsewhere for a number of years. Later they returned and lived in Oak Lee, where Mary spent the rest of her life until she became too frail to live at home.

Her well-attended funeral service was held at St Andrew's Church on 16th January 2015, and her body was laid to rest in the churchyard close to Churchgate where she spent her early years.

CLIFFORD ELLISON

Clifford Ellison, who lived at Buckby Wharf for around 30 years, was an active member of St Andrew's Church Whilton. He moved away to Devizes, Wiltshire, for the last part of his long life and died there on 24th January.

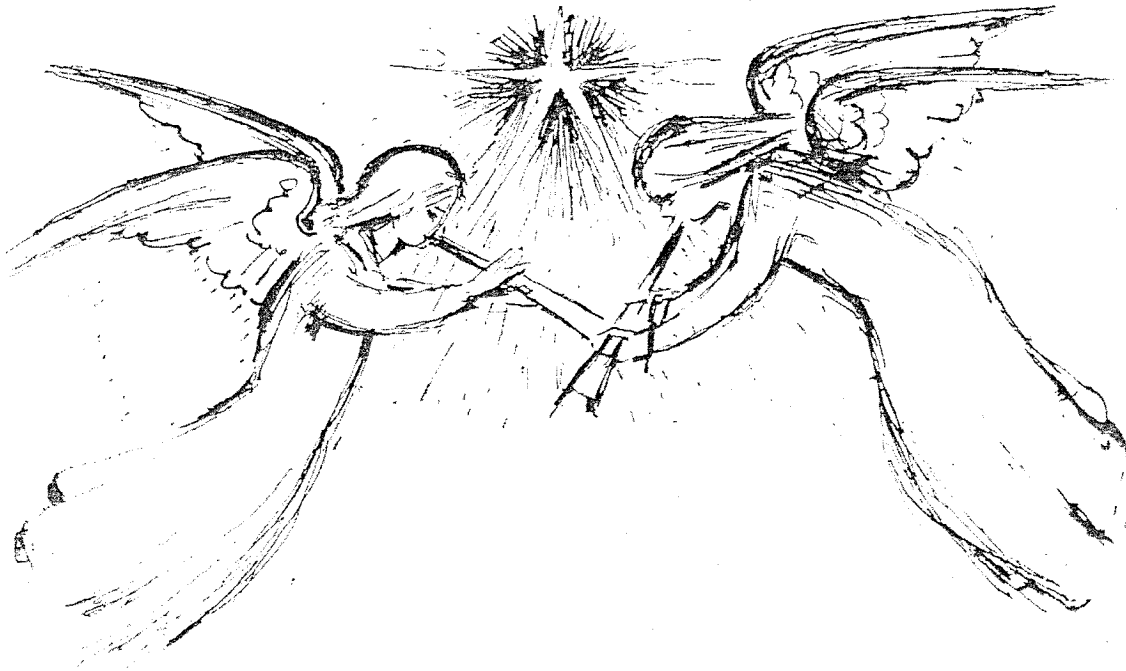
The son of a vicar in County Durham and born in 1920, he was educated at Durham School where his artistic talents blossomed and he won the school art prize every year. He progressed from there to Chelsea Art School, where he was taught by Henry Moore and Graham Sutherland, among others. The war intervened and he served in the Middle East and Italy before returning to complete his studies.

Clifford became a picture restorer with a very high reputation. He held the Royal Warrant as Picture Restorer to Queen Elizabeth II, and also looked after paintings for the National Trust, the National Portrait Gallery, several London dealers and interior decorators, and a number of private collections including those of the Duke of Buccleuch, the Spencers at Althorp and Captain Drury-Lowe at Locko Park.

On a more intimate level, those who were fortunate to receive correspondence from him have cherished the postcards, individually designed and painted in watercolours, which came, amazingly unscathed, through the post. In Whilton he is particularly remembered for the magnificent paper angels, which floated over the congregation in St Andrew's Church during the Christmas celebrations and for the glistening holly balls which accompanied them. His modesty and quiet demeanour in no way revealed his stature to those who encountered him in the village.

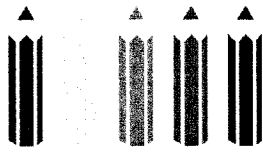
Clifford's life was celebrated in a service of thanksgiving in Devizes, and many in Whilton share happy memories with Anna, his wife, and family.

FAMILY



A drawing of flying angels by Clifford Ellison, reminding us of his Christmas paper angels, which feature in the photograph below





Brington and Whilton Pre-School

Good news to be reported this time in the newsletter, Ofsted visited the Pre-school at the end of the last term and gave us 'Good'. The inspector came across to the Spinney with us and observed the children enjoying themselves making teddy houses and following a trail. Some of the comments that she made on the report were:

- There are warm relationships between children and practitioners, which promote children's well being and help to develop their self confidence.
- Children access a wide range of activities that spark their interest and encourage them to explore and be imaginative.
- Partnership working with parents is strong and parents speak highly of staff and the difference the pre-school has made to their child's learning and development.

You are able to see the full report at Ofsted Inspection Reports.

As the weather has not been too bad this winter we have been to the Spinney on most Wednesday's and hope to be down there more now that the weather is starting to warm up. We have enjoyed activities around stories during this last term and are currently looking at Spring – taking pictures of the snowdrops/catkins in the spinney and talking about Spring flowers and baby animals.

The Pre-school is again collecting Sainsbury's vouchers to enable us to purchase some children's toys, please help us collect them – if you put them in the village hall letterbox we would be grateful.

During the Easter Holidays we shall be having our Annual Easter Egg Hunt – please join with us, details below.

If you have child aged 2yrs to rising 5yrs who would benefit from attending a caring setting, please do not hesitate to contact Jenny Holman 01604 770083 or 07948724415 and book a visit to come and see us.

BRINGTON & WHILTON PRE-SCHOOL
EASTER EGG HUNT

Great Brington Church
Saturday 4th April 2015

Easter Egg Hunt 10.30am

Raffle

Children's Easter Story

Coffee, Tea and Light refreshments

£2.50 per child



Making a house for the teddies



Following the wool trail



Snowdrops in the spinney

Fun Stuff

This issue Louise Whitcombe has sent in a spring themed wordsearch, the answers could be hidden across, downwards, backwards or even diagonally! Good Luck!



r	a	s	v	b	o	n	l	o	f	g	g	h	f	l
e	g	g	s	e	i	m	a	e	c	i	n	m	n	v
c	k	r	s	w	h	d	m	t	k	t	o	m	u	b
r	a	i	n	h	t	g	i	w	a	t	w	e	h	s
p	l	i	c	i	y	n	u	a	c	k	l	o	e	
t	h	f	e	c	a	t	a	p	l	a	n	t	s	b
e	t	u	l	a	n	g	r	o	w	i	n	t	o	a
g	c	m	c	o	s	h	s	u	n	m	k	b	n	b
r	a	u	a	t	w	t	m	r	a	i	n	y	e	y
o	c	a	l	c	t	e	e	r	y	c	a	t	b	l
w	l	h	e	e	a	o	r	r	a	c	n	e	o	a
i	c	u	t	s	c	v	o	s	u	n	n	y	y	m
n	k	p	r	n	n	v	o	e	s	u	n	y	y	b
g	a	p	r	i	l	s	h	o	w	e	r	s	w	s
c	k	t	u	m	s	e	v	e	h	y	z	w	n	m

Spring Words:

Flowers

April Showers

Baby lambs

Easter

Growing

Animal

Eggs

Sunny

Insect

Plants

Rainy

The Whilton Newsletter is published quarterly and circulated free to every household within the parish boundary. The costs are met by the Parish Council.

The Editors are:

- Anthea Hiscock, Langton House, Main Street.
Telephone: 01327 843319. e-mail: anthea.hiscock@tiscali.co.uk
- Karen Whitcombe: Inglenook, Main Street
Telephone: 01327 843544. e-mail: karen.whitcombe@cummins.com

We would be very happy to welcome another member on to the editorial team. If you are interested, please contact us.

- ❖ The Editors welcome material for the Newsletter. If possible, please send your contribution by e-mail. If you do not have a computer, the editors will be happy to type handwritten articles for you.
- ❖ The next issue will be the Spring Edition, covering June – August 2015. The last date for contributions will be 20th May 2015.
- ❖ The Newsletter is published quarterly, but Whilton also has a website – www.whilton-village.net. This contains details of the organizations in the parish, previous Parish Council Minutes and Newsletters and a comprehensive Picture Gallery. It also has latest news and updates on parish events.
- ❖ If you would like to advertise your local business, flyers can be delivered to every household in the parish with the Newsletter at a small charge. For information please contact one of the editors.

WHAT'S ON IN WHILTON

SPRING 2015

DAY	DATE	TIME	PLACE	EVENT
Sun	1 Mar	10 a.m.	Harlestone Church	Benefice Sung Eucharist with Sunday School
Sun	8 Mar	6 p.m.	Church	Evening Communion
Wed	11 Mar	7 p.m.	Village Hall	Parish Council
Sun	15 Mar	9.15 a.m.	Church	Mothering Sunday Service
Sat	21 Mar	10.30 a.m.	Village Green	Litter Pick
Sun	22 Mar	11 a.m.	Church	Worship for All
Fri	27 Mar	7.30 p.m.	Village Hall	Whilton Local History Society
Sun	29 Mar	10.30 a.m.	East Haddon Church	Benefice Sung Eucharist with Sunday School
Tues	31 Mar	2.30- 4 p.m.	Village Hall	Tuesday Chat
Wed	1 Apr	7.30 p.m.	Village Hall	Gardeners Association. Slide show with Music
Sat	4 Apr	10.30 a.m.	Brington Church	Pre-school Easter Egg Hunt
Sun	5 Apr	TBA	Church	Easter Day service
Wed	15 Apr	6.30 p.m. 8 p.m.	Village Hall	Annual Parish Meeting Parish Council
Sat	18 Apr	12 noon	Village Green	PCSO "Have your say" meeting
Tues	28 Apr	12.30 for 1 p.m.	Village Hall	Social Lunch
Wed	13 May	7 p.m.	Village Hall	Parish Council
Tues	19 May	2.30 – 4 p.m.	Village Hall	Tuesday Chat

Regular weekly events include:

- **BRINGTON AND WHILTON PRE-SCHOOL** in the Village Hall:
Term time: Mon, Wed, Fri: 9.30 a.m. – 1 p.m. and Wed 1 – 3 p.m.
- **BELL RINGING** at the Church:
Mon: 7.30 p.m. - 9 p.m.
For further information please contact Justin Baker 844263 or Janet Bowers 842581
- **WHILTON WARBLERS CHOIR** in the Church:
Term time: 7.15 for 7.30 p.m.

For details of church services in April and May, please see the notice board.