



March - May 2017



The M1 opened in 1959



The M1 at Whilton in 2017

Whilton Spring Newsletter

## *Spring 2017 Editors' letter*



*We are used to buzzards soaring high over the fields of Whilton, but we have noted that during the winter one has taken up position on Whilton Hill, haunting or guarding the hedge leading into the village.*

*Perhaps it has been dislodged from the verges of the Motorway. As works continue to widen this length of the M1 some large birds may have lost their homes and their larders of small creatures, at least temporarily. Many birds of prey have now lived for generations where there is almost no disturbance on the verges of busy roads. They have learned that there is little to fear from passing vehicles and this bird shows no concern as villagers drive in and out.*

*Residents of both the Locks and the village have perceived an increase in the amount of traffic passing along the main road and through the village over the last year or so. Crossing the A5 is taking longer as lorries trundle to and from DIRFT and drivers sometimes use this route to avoid motorway jams, although they do risk delays caused by road works. We admire the buzzard's sangfroid.*

*The Parish Council has added its own traffic speeding concerns in this issue, introducing the new "Twenty is Plenty."*

*Despite traffic problems, we hope that all parishioners will enjoy reading this issue, and will be encouraged to join in some of the activities planned for Whilton in the spring. We also welcome those of you who are new to our community and those who are about to move into the parish.*

*The Editors*

## UPDATE ON ROUGHMOOR SPINNEY

Following the article and appeal in the last Newsletter, we are pleased to inform our readers that the Roughmoor Spinney Project Management Group has a new secretary, Linda Tibbs, who was welcomed at the February meeting. Janet Bowers continues as acting chair.

With the support of the Parish Council the Group will continue to manage and maintain the Spinney. We invite all who are interested to join in the next event, as follows:

### SPINNEY WORK PARTY

2 p.m. Sunday, 12<sup>th</sup> March 2017

Task : Laying granite chippings on the Spinney paths.

Tools required: wheelbarrows, shovels and rakes, plus willing bodies.

If the weather is uncertain, please ring Maurice Clements: 842006



*Spinney history: logs from the felled hybrid black poplars being transported away before the Millennium.*

**The Northamptonshire Association for the Blind (NAB)**  
will have its Mobile Sight Centre in Daventry Town Centre  
on the following mornings from 10 a.m. to 1 p.m:  
Wednesday 22 March  
Wednesday 26 April  
Wednesday 24 May.

# Do you want to support 20mph in our village?

**Our village has:**

- Narrow roads
- Blind corners
- School age children
- Preschool children
- Senior citizens
- Cyclists
- Horses

We think that

## *“20 is plenty for Whilton”*



### What can you do?

#### Driving at 20mph

The first and most important way you can support 20mph is to drive at 20mph.

As more residents make the conscious decision to change their driving style and keep to 20mph, this will become the norm in Whilton.

#### Become a Pace Car

Place your free "20mph— Twenty's Plenty Where People Live" car sticker in your car window. By driving at 20mph and displaying the car sticker in your rear windscreen, you will act as a pace car. When people are driving behind you they will see the sticker and understand why you are driving at 20mph. One sticker will be delivered to each household in the near future.

## Did you know?

At 20mph it takes  to stop.

At 30mph it takes  to stop.

## What Next?

The Parish Council has been successful in reducing the speed limit through Whilton Locks to 40mph but the request to reduce the speed limit in Whilton village was refused. We think it is time we acted as a community to improve the safety of our villagers. We intend to:

1. Erect signs that indicate "20 is Plenty"
2. Issue car stickers to all households in the village
3. Set up a Community Speed Watch

### COMMUNITY SPEED WATCH

- *A Community SpeedWatch is being set up in our village.*
- *Community SpeedWatch is a partnership between the Community, the Police and Local Authorities.*
- *A SpeedWatch consists of local residents, who are willing to volunteer a small amount of time each week (over a three week period) to monitor speeds with speed detection equipment.*
- *Persistent offenders will receive up to two warning letters, and on a third occasion, offenders can expect further action by police.*

*If you would like to get involved with this please email [clerk@whiltonpc.co.uk](mailto:clerk@whiltonpc.co.uk)*



**Please make your personal pledge to join the campaign to make our village safer. Thank you.**



In the course of this month the Editors have been contacted by two separate parishioners, both of them dog owners. They expressed their concern about the presence and amount of dog mess being left uncleared in and around the village. Areas mentioned were the path to the church door, along which walk the bell ringers, choir members, people visiting graves and those attending the church. The pavement on Main Street from the area of the Green to the Village Hall is affected in the same way. Another area of messing is at the end of Buckby Lane and into the field, where faeces are left despite a bin being put in position at the end of the lane.

**Do report dog fouling to the District Council in one of the following ways:**

- **Report dog fouling online**
- **Email: [customer-care@daventrydc.gov.uk](mailto:customer-care@daventrydc.gov.uk)**
- **Call on 01327 871100**

The assistance of the public is crucial to the District Council's efforts to tackle dog fouling. It is helpful to their officers if when reporting dog fouling you are able to include the following information:

- **The time, date and location of incident**
- **The frequency of the offence, if it happens regularly**
- **A description/breed of the dog**
- **Any other descriptions to help identify the offender, including their name and address if known.**

We are sure that 99% of Whilton dog owners are responsible and considerate. It may be literally one or two people who are causing this offensive hazard. It is time to make Whilton a clean, pleasant and healthy village for all.

### **A reminder from the Parish Council**

#### **WHILTON AND WHILTON LOCKS E-MAIL DISTRIBUTION LIST SHARING NEWS AND CONCERNS WITHIN THE PARISH**

Many notices, such as the firework events notification detailed in an earlier issue, may benefit from a generalised quick widespread distribution. One way of doing this would be via e-mail, and hence it may be advantageous for the Clerk to have a centralised database of everyone's e-mails for the Parish.

Now before everyone panics about giving out a personal e-mail address, there are various security measures that can and will be implemented. Firstly, only the Clerk will have visibility of all the e-mail addresses, which will not be passed on to third parties. Secondly, it is possible to send e-mails but keep the distribution list hidden. Hence, no one else will be able to see anyone else's e-mail address. So if you are still interested in joining this scheme, please send your chosen e-mail address to [clerk@whiltonpc.co.uk](mailto:clerk@whiltonpc.co.uk).

## WHILTON VILLAGE HALL 200 CLUB 2016/2017

### OCTOBER 2016

1 <sup>ST</sup> PRIZE	S Brown	023
2 <sup>ND</sup> PRIZE	P Wingrave	073

### NOVEMBER 2016

1 <sup>ST</sup> PRIZE	S Davies	136
2 <sup>ND</sup> PRIZE	J Drodge	156

### DECEMBER 2016

1 <sup>ST</sup> PRIZE	P Wingrave	073
2 <sup>ND</sup> PRIZE	S Thomas	103

### JANUARY 2017

1 <sup>ST</sup> PRIZE	T Leadbetter	060
2 <sup>ND</sup> PRIZE	M Kane	159

Congratulations to all the prize winners

## WHILTON VILLAGE HALL 200 CLUB

1<sup>st</sup> APRIL 2017 – 31<sup>st</sup> MARCH 2018

Whilton Village Hall is a registered charity. It is also registered with the Gambling Commission as a small lottery – Gambling Act 2005. The village hall owes a lot to the 200 Club and we hope that our current members will continue to support us and also new residents will 'sign up' when our collectors come round for the new 200 Club year.

At the moment we have 121 tickets taken up and there are two prizes per month to win, 1<sup>st</sup> prize £45 and second prize £25. The price per ticket is £13 per annum. This means that, with the balance, we are able to pay towards repairs which are necessary to our old building. In fact we have just paid £2,000 for external work on the hall (guttering, walls and tiles etc). We know too that, due to its age, there will no doubt be more work required to the hall in the future.

Our General Account is responsible for utility bills, insurance, necessary subscriptions such as Performing Rights and replacement of domestic objects. We usually can manage small repairs. As our income is mostly from rents, we would be unable to meet large repair bills without the help of the 200 club.

The village hall is an asset to the whole parish. It is used by Brington & Whilton Pre-School three times a week in term time, Whilton Gardeners' Association, Whilton Local History Society, Social Lunches, Spinney Project regularly and others groups at various times (church, choir, pot-luck suppers). It is also available for private bookings.

So please support the 200 Club and the village hall.

## O HOLY NIGHT

Following our summer trip to Bulgaria the **Whilton Warblers** turned their attention to the Christmas concert. It felt a bit strange singing *Away in a Manger* in September but that's the way it goes. With only ten or so rehearsals until the concert we have to knuckle down straight away.

You're probably wondering why we need to rehearse such a well known song. It's because some of us have to unlearn the melody we've been singing since we were five years old and learn to sing it to a new tune and arrangement. For this favourite carol the men sang the familiar melody and the sopranos and altos each had to learn their own, different harmonies. Always a challenge but so worth it after the first few faltering "car crash" attempts. We generally get it after about three rehearsals and at each rehearsal we may sing two or three songs, so as you can imagine putting together a programme of a dozen or so songs takes a lot of time and effort.

As always Judit guides us through never doubting our ability to get there in the end and as always she springs a last minute surprise on us at the final run through. We are to sing the chorus for a show song that Judit will perform. It's unfamiliar but catchy and luckily we pick it up quickly. Our big song of the concert is *O Holy Night*. It's been desperately hard to learn with different parts, tricky timing and tempo changes but we do our best and it's beautiful, not perfect, but beautiful nonetheless.



We were lucky to have some members of the newly formed **Aperture Photography Group** taking photos of the concert so we have some lovely keepsakes of another memorable evening

Teresa Leadbetter

\*\*\*\*\*

### WHILTON ALLOTMENT GROUP

have some very good reasons for having an allotment  
to accompany the photo opposite:

- 1.It's good for your health
- 2.It's good for the environment
- 3.It's sociable
- 4.It's educational
- 5.It can be creative
- 6.It can save you money
- 7.It's very rewarding
- 8.You can grow vegetables that are hard to get or expensive in the supermarket

E mail the secretary: [jane\\_drodge@hotmail.com](mailto:jane_drodge@hotmail.com) or phone 01327 844194



### One Night in January

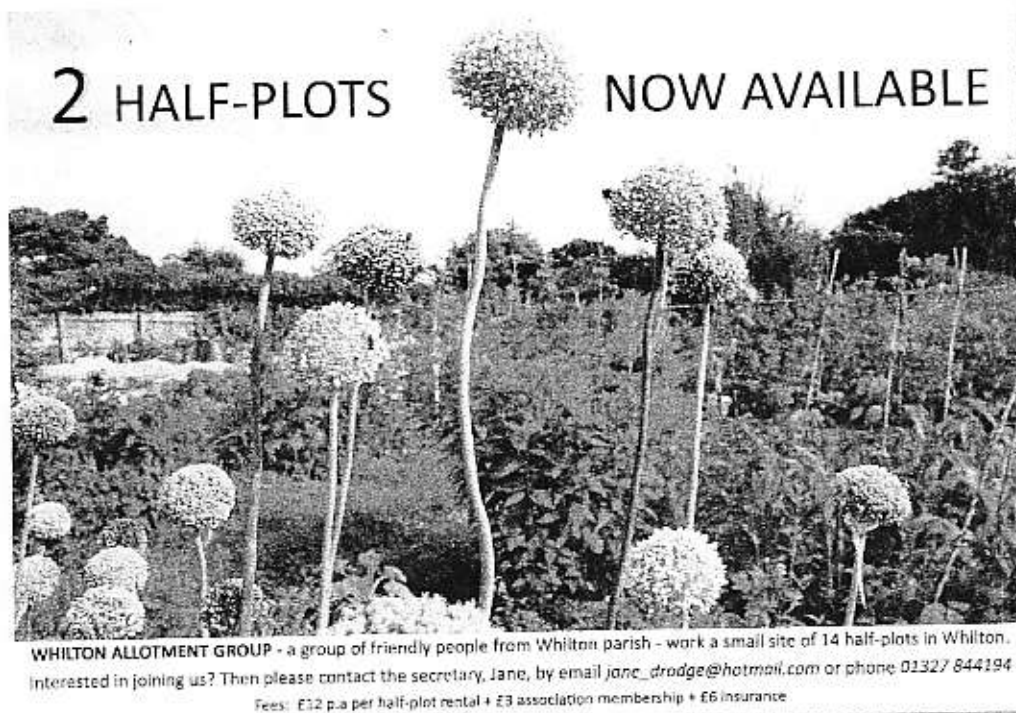
The village hall is transformed: colourful bunting criss-crosses the ceiling, tables are set with crisp white tablecloths, bright napkins and pretty posies of fresh flowers, lively music is playing in the background, the kitchen is a hive of activity and then the people start to arrive. It can only mean one thing. Christmas is behind us and the Pot Luck Supper Ladies are preparing to celebrate a fresh new year. Though this is ostensibly the Christmas do turkey is banned from the menu but we do kick off with mulled wine and the men are allowed to join us.

The hall is packed to capacity and there's a fantastic assortment of food in all three courses. With limited kitchen facilities it's a logistical challenge to keep food hot until required but a bit of creative thinking and a host of food warmers and slow cookers solve the problem. A bit of everything and second helpings are positively encouraged, everyone has brought their own drinks and the evening passes in a happy noisy flash.

In my personal opinion it has been the best Pot Luck Supper so far thanks to Ann and the team of ladies who organised and set it up. We now need a volunteer or volunteers to organise the Spring PLS – any offers?

Teresa (Contact me on [teresa@tlc-uk.co.uk](mailto:teresa@tlc-uk.co.uk) if you are interested in the PLS.

\*\*\*\*\*



**2 HALF-PLOTS NOW AVAILABLE**

**WHILTON ALLOTMENT GROUP** - a group of friendly people from Whilton parish - work a small site of 14 half-plots in Whilton. Interested in joining us? Then please contact the secretary, Jane, by email [jane\\_drudge@hotmail.com](mailto:jane_drudge@hotmail.com) or phone 01327 844194

Fees: £12 p.a per half-plot rental + £3 association membership + £6 insurance

## WHILTON LOCAL HISTORY SOCIETY

On 13<sup>th</sup> January we shared a Tudor meal, imagining that it might have been eaten in the farmhouse of Richard Botterill. Richard was a Whilton farmer. He may have held the farm which once stood opposite the Plough. The Botterill family prospered in Elizabethan England and by 1597 their farmhouse had two storeys. This means that they probably now had a chimney with a cooking hearth and a bread oven beside it. In earlier times there were ovens in very large houses and castles, but ordinary people made do without or used the communal oven, known in Whilton as the Common Bakehouse, which was probably at Whilton Forge.

*The pies disappeared quickly*

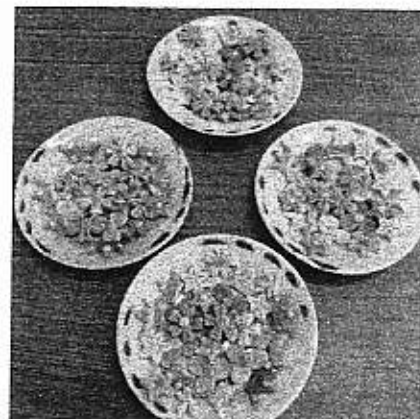


Richard's wife and servants may well have cooked pies in their Whilton oven. Before the days of casseroles, the strong hot water crust acted as a cooking vessel for the meat and was known as a "coffin."

We tried a number of different pies, holding chicken, beef, ham and pork, and a mixture of meats, such as the Tudors loved. These were accompanied with bread and some green salad leaves. Farming communities and poorer people often had a healthier diet than the very wealthy Tudors, who had a meat-rich diet with very few vegetables and fruits.

Our desserts were more luxurious, reflecting some of the novelties of Elizabethan times. The old dessert of junket or "curds and whey" was going out and the new fashion was for syllabub. Elizabethan syllabub started as a drink. A mixture of alcohol, sugar and flavouring was left overnight and then the warm new milk of a cow was poured into it. Deciding that this would be difficult to achieve and not to modern tastes, we opted for a later development of syllabub. In this whipped cream was added instead of milk, resulting in a dessert to eat with a spoon. We enjoyed lemon syllabub and another flavoured with ale, whisky and nutmeg.

Our second dessert would have been high in import and labour costs. "Marchpane" was made from imported almonds, sugar and rose water. Jordan almonds were reckoned to be the best, but both they and the sugar had to be pounded and ground down. The resulting almond milk helped to bind the mixture and rose water, probably from the Ottoman Empire, was added too. We ate modern marzipan instead, cut into dainty Tudor shapes and coloured green and pink, as was their custom. The addition of gold leaf decoration was only for royal or noble gatherings.



The meal was followed by the Annual General Meeting. We recorded our thanks to Jane Thomas, our secretary, who is moving away, and are grateful that Marian Seal; has volunteered to be her replacement.

The next meetings of the Society will be as follows:

**WHILTON LOCAL HISTORY  
SOCIETY**

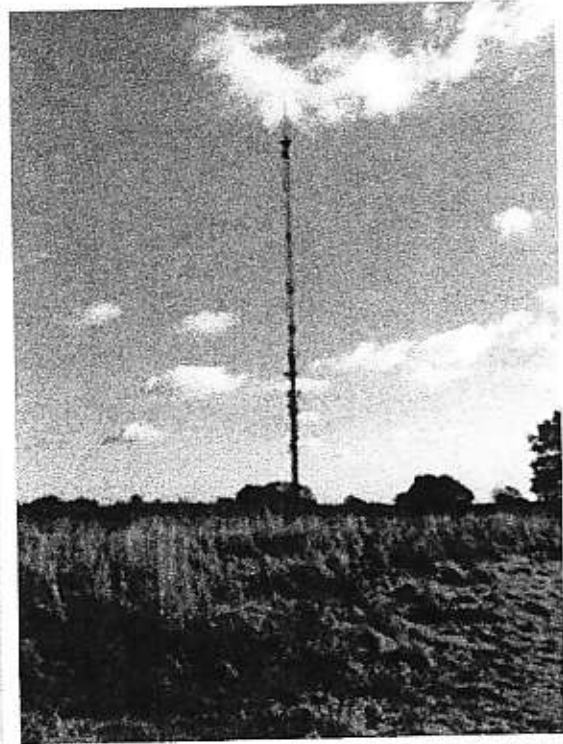
**“BOROUGH HILL”**

The history of Borough Hill  
from pre-historic  
to modern times.

Speaker: David Adams

7.30 p.m. in the Village Hall  
Friday 17<sup>th</sup> March 2017.

All are welcome



Whilton Local History Society

**Bannaventa in the Landscape**

Speaker: Stephen Young

Whilton Village Hall

7.30 p.m. Friday, 19<sup>th</sup> May 2017

All are welcome

Meetings are free for members and there is a charge of £3 for visitors.

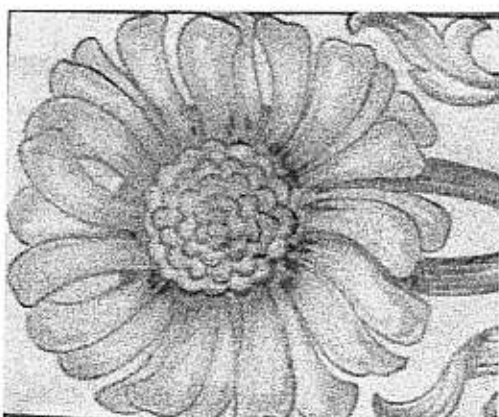
## NEWS FROM ST ANDREWS

We had a successful Christmas with the highlight being the candlelit Carol Service. The Christmas Trees were on display and were much admired. Thank you to all those who gave their time to decorate the trees and helped make this a success.

Thank you also to those who sponsored the church lights over the Christmas period. The nights are still dark so if you would like to light the church to mark a special event do let me know.

Our Service Schedule is published elsewhere in the Newsletter. Our Evening Communion Service is well attended but we are sometimes a bit thin on the ground for the morning services which is the reason these have been reduced in number.

Our next "big" service will be Mothering Sunday Evening Communion at 6.00 on 26 March. We are pleased to welcome everyone to our services, young and old, so please come and join us to celebrate Mothers Day.



*The flower design shown here is from one of the tiles behind the altar in the church, and helps us to remember that spring is here now, as we celebrate Mothering Sunday and Easter.*

Easter Sunday is on 16 April. At the time of writing we have not finalised the time of our service but details will be circulated nearer the date.

It costs around £10,000 a year to operate the church including the cost of our rector, insurance, electricity and routine minor repairs. These funds are raised primarily from donations and fees that we recover on marriages and funerals. It is a resource available to all villagers and we are grateful for the additional practical help that we receive. Roy Haynes devotes countless hours to mowing and maintaining the churchyard and we remain very grateful for his time and effort.

We have a small team who help to clean the church and supply the flowers. Thanks to Trish Wood who organises this and to the team of helpers: Mary Kane, Ian Woods, Sue Hanslip, Nick Busby, Anne Healey, Margaret Jack, Ros Gardner, Janet Bowers, Mary Emery, Moana Seth-Smith, Jane Stoddard and Lynn Archer. Thanks also to Adrian Lee who helped us by removing a diseased tree.



If you feel that you would like to support us in any way, please let me know. I can be contacted on 843380 or by email [Jbrierley1@aol.com](mailto:Jbrierley1@aol.com).

Jon Brierley, Churchwarden, 7 Langton Rise

## 80 YEARS AGO

May Day used to be a special occasion in Whilton, with the crowning of the May Queen and a half day holiday for the schoolchildren. In 1937 the May Queen was Annie Bingley, seen here with her attendants in the schoolyard.

Annie lived in the little cottage in the yard of Rose Briar. She later moved to Harlestone with her parents, but married Alf Surridge who also went to Whilton School and had lived in Rose Briar.



### WHILTON SOCIAL LUNCHES

Our 10 Year Birthday Lunch on 29<sup>th</sup> November 2016 was very successful and enjoyed by 28 villagers plus the youngest yet to our Social Lunches – three week old Emma Camps - who was as good as gold.

We were served very tasty and warming pork or vegetarian main dishes with delicious vegetables and the usual three desserts, cold and hot. In addition to that we had a lovely Black Forest Gateau Birthday Cake, made specially by Ros for the occasion. This was followed by tea or coffee and chocolate mints.

Donated wine was served throughout the meal together with water and fruit juices. This was a lovely happy cheerful meal with a party atmosphere

**THE NEXT SOCIAL LUNCH WILL BE ON TUESDAY 23<sup>rd</sup> MAY 2017  
12.30 – 1.00 PM AT THE VILLAGE HALL**

**You can book nearer the time by phoning Anthea Hiscock on 843319 or  
Shirley Brown on 842968**



## **Quiz Night in Whilton.**

**Friday 12<sup>th</sup> May 2017**

**7.30 p.m.**

**Whilton Village Hall**

**Bring your own drinks  
to accompany the nibbles  
and come to enjoy an evening of  
friendly competition.**

**All proceeds in aid of the  
Captain Henry Reynolds VC, MC  
centenary event  
“CELEBRATING COURAGE.”**

**Tickets £10 available from Neil Phillips.**

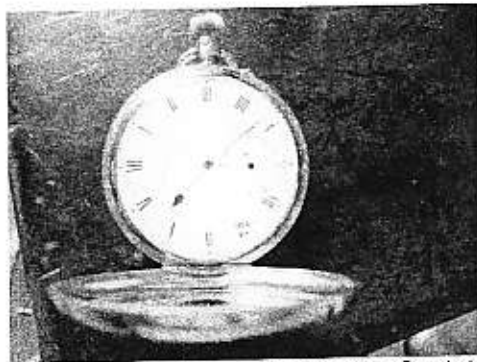
## PLANNING FOR EVENTS ON 20<sup>TH</sup> AND 23<sup>RD</sup> SEPTEMBER 2017

### CELEBRATING COURAGE

"Capt. H Reynolds,  
a man of wonderful gallantry"

### Progress of the working party

The working party is continuing to make preparations for the event in September when we shall remember the courage and the life of Captain Henry Reynolds, who won the Victoria Cross in September 1917, having already won the Military Cross in the previous spring



*The gold watch presented to the Captain  
by East Haddon villagers*

We are planning a day of ceremony on Wednesday 20<sup>th</sup> September, with a parade, attended by a colour party from the Royal Scots. The memorial stone on Whilton Green beside the churchyard will be unveiled by the Lord Lieutenant, and then a thanksgiving service will be led by the Bishop of Peterborough. The Parish Council is arranging the laying of the stone plinth.

There will be a photographic exhibition of Henry Reynolds' life, and also exhibitions of World War I items, mostly replicas which may be handled, and project work by children of Brington and East Haddon Schools. The local gardeners are planning to grow vegetables which will be on display in the church, linking with the fact that Henry Reynolds in later life worked with mentally ill ex-Servicemen, training them in vegetable and fruit growing.

### The Investiture.



*"Captain Reynolds is absolutely fearless.  
But for him we would have been beaten back."*

Captain Reynolds, known as "Harry" was one of ten children born in Whilton Locks where he grew up and lived his early married life. He moved to East Haddon shortly before the First World War. We are sharing the celebration and commemoration with East Haddon, whose main event will take place in December.



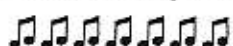
*"One of the most capable and  
conscientious officers I have ever  
had under my command."*

The community of Whilton will continue the event on Saturday 23<sup>rd</sup> September with Whilton Warblers singing songs of the First World War and with a period tea in costume. The exhibitions will continue, as will the village trail by the Local History Society, which will inform us about other Whilton men who went to war.

The biography of Captain Reynolds will be ready for September and copies will be available to order in advance later in the year. Further details will be included in the Summer Newsletter, but meanwhile please do contact the Working Party if you would like to help now or in September. (843319)



### **The Whilton Warblers Spread Their Wings**



The Whilton Warblers were delighted and flattered to be invited to sing at a fund raising concert for Flore church. We featured on a programme with the Judit Singers, Judit's choir from Daventry. This was the night after our Whilton concert so we sang a selection of songs from the previous evening. The Judit Singers performed after us and then we combined into one very large choir for the final set.



The church was full and so we hope that lots of money was raised towards replacement of the stolen lead.

A couple of weeks later the choir was engaged to sing Christmas carols outside Vintique at the Weedon Barracks for a special open evening. Mulled wine and mince pies were supplied to fortify the choir on a cold damp night and everyone enjoyed the experience.

Teresa Leadbetter



## THE MARCH HARE

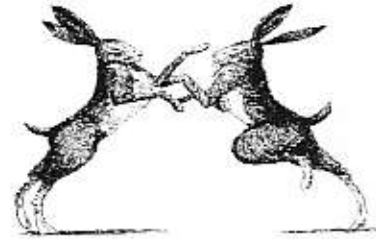
### WHY IS HE MAD?

Early March is a frantic time for the nation's hare,  
The female will select a mate and go off as a pair.  
Her choice must be absolutely right, for a very good  
reason:

She's going to be stuck with him for the next eight  
months of the season.

They appear to be acting mad and boxing as I begin  
this tale.

It's the female fighting off unwanted attention  
From an over-amorous male.



However  
Let the tale begin...

He marks his territory with his musk  
To warn off rivals and attract a female's trust.  
She's feeling broody from nature's force  
And curious to see what he's like, of course.  
He thumps and calls and struts his stuff  
And hopes his display is good enough.  
And if her natural caution thins  
The ritual mating dance begins.  
They race in circles, writhe, twist and shriek,  
Leap, drum and call until a peak is reached,  
And when the ritual dance is done  
To the force of nature they both succumb.  
Together they build a grassy form  
In a dip in the land where the litter is born.  
The babes they nurture, protect and shield  
From the natural predators of the field.  
And the leverets grow, learn, romp and play  
Until they go their separate ways.  
Why the males are mad - the answer is clear -  
This only happens three times a year.



WHAT A SHAME.

Stan Henniker  
of Whilton Locks

# Aperture Photography Group

Since the group was formed last October, the group has continued to attract new members, all keen to share their interest in photography. We have now held two classroom training sessions, introducing members to basic camera skills. The response has been really positive and we are now planning to rerun the sessions again and introduce new workshops on composition and 'photoshopping'.

The outings are continue to prove popular and we have been to a Wanderers' match at the Saints ground, to Canons Ashby and to Stowe Gardens to capture the delights of Capability Brown's wonderful landscapes.

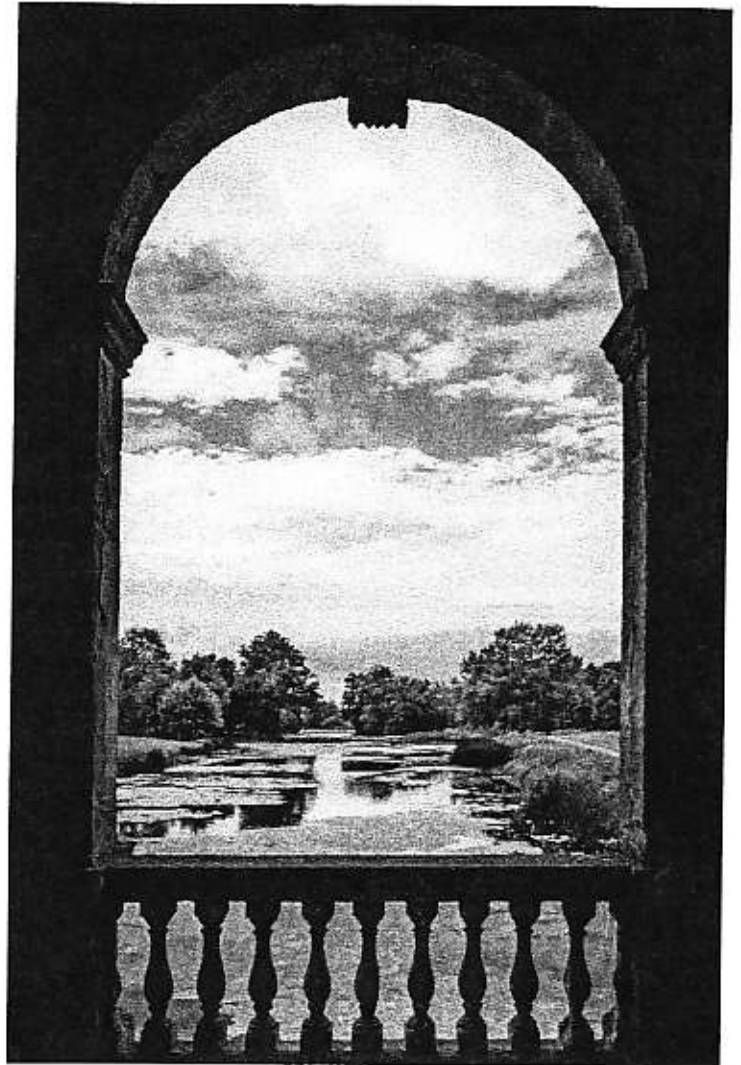
Our meetings are held fortnightly at the Saracen's Head in Little Brington and provide an opportunity for members to share their photos with each other, practice using studio lighting and gain feedback from the experienced members.

If you are new to photography and want to learn how to take better photographs then get in touch by phone or email and we will let you know how you can get involved.

Neil Phillips

Tel: 01327 844182

Email: [neiljphillips@mac.com](mailto:neiljphillips@mac.com)



\*\*\*\*\*

## Thank you

Whilton Carol Singers would like to thank everyone for their donations when they came round the village in December. The sum of £270 was raised towards defibrillators for Whilton village and Locks.



# WHILTON GARDENERS' ASSOCIATION



As I write, the snowdrops are in full bloom and the green shoots of the daffodils are pushing through the ground, heralding the start of another gardening year.

We held our AGM on 1<sup>st</sup> February with 20 members attending and, afterwards, enjoying a fun quiz with wine and nibbles.

Our next meeting will be on 5<sup>th</sup> April when Michael Brown will be giving us a talk entitled 'The Georgian Gardener', starting at 7.30pm in the village hall.

On 7<sup>th</sup> June Caroline Tait will talk to us about 'Winter into Spring at Coton Manor Gardens'.

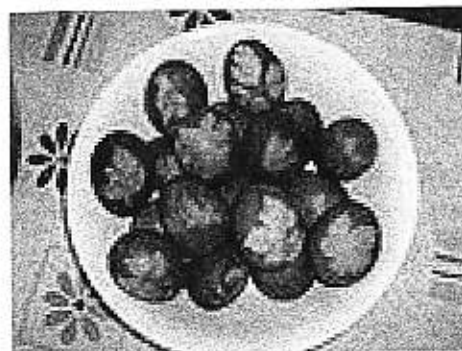
We would welcome new members to the association and now is a good time to join, with the year's programme ahead. We meet six times a year and the subscription is £15 per person. There is always a social element to our meetings and so it is a good way to get to know people if you have recently moved to the village.

If anyone is interested please get in touch with our membership secretary, Maurice Archer, on 01327 843081.

\*\*\*\*\*

## LEAF PATTERNED EGGS

This is an old but attractive way of decorating eggs at Easter. Carefully wrap leaves around the eggs holding them in position with muslin or old tights tied round. Boil in water with onion skins, which will dye the eggs brown leaving a paler leaf pattern on the shells.



## FAMILY NEWS

### WELCOME

Congratulations to Magda and Leslaw Fiutowski on the birth of their baby daughter Francesca on 7<sup>th</sup> February.

### CONGRATULATIONS

We congratulate Charles, son of Nick and Amanda Hill of Church Farm, who was married to Sophie Jacobs at Staverton Church on 17<sup>th</sup> December.



Having honeymooned in Iceland they have now moved to Staverton. The couple met at Campion School where they were both pupils. Charles is now a Chartered Accountant and Sophie teaches at Fairfield School in Northampton.

We wish them every happiness.

### GOODBYE

Early in March the village will be saying goodbye to Michael and Jane Thomas. We thank them for all they have done in the community, especially thanking Michael for his years as a Parish Councillor, and Jane who has been secretary of the Village Hall Management Group, of the Local History Society and the Henry Reynolds VC Working Group, besides cooking for the Social Lunches.

They will both be missed and we wish them well in their new home in Hertfordshire.



## The Althorp Partnership

Executive Headteacher Mr John Sarbutts

Brington Primary School  
Little Brington  
Northampton  
NN7 4HX  
01604 770286

Harlestone Primary School  
Church Lane  
Harlestone  
Northampton  
NN7 4EN  
01604 842391

[head@brington.northants-ecl.gov.uk](mailto:head@brington.northants-ecl.gov.uk)  
[bursar@brington.northants-ecl.gov.uk](mailto:bursar@brington.northants-ecl.gov.uk)

[head@harlestone.northants-ecl.gov.uk](mailto:head@harlestone.northants-ecl.gov.uk)  
[bursar@harlestone.northants-ecl.gov.uk](mailto:bursar@harlestone.northants-ecl.gov.uk)

We are now half way through the school year and as always we continue to be very busy! A small taster of what has happened at Brington and Harlestone Primary schools follows:

### **Sports Hall Athletics**

On Tuesday 10<sup>th</sup> January a group of year 5 and 6 children from both Brington and Harlestone took part in a Sports Hall athletics competition at Champion school. The children participated in a variety of events including standing long jump, standing triple jump, basketball throw and a wide variety of relays. The children performed brilliantly and enjoyed competing against nearly 200 other children. Well done to all who took part and thanks to parents who came to support.

### **Year 4/5 Basketball**

On Wednesday 22<sup>nd</sup> February children in Years 4 and 5 will have the opportunity to go to Champion school to take part in a basketball festival. The following week there is a competition for Year 4 and 5 children again at Champion.

### **Rainforest visit**

On Wednesday 23<sup>rd</sup> January, both Class 1 at Brington and Class 1 at Harlestone received a visit from a wide variety of rainforest animals. This was as part of their topic on the Amazon. The children (and staff) had the opportunity to hold, stroke or touch a number of animals including a snake and giant snail. The children really enjoyed the opportunity to find out more information about rainforest animals and it was lovely to see so many of them have the confidence to touch many of the different animals.

### Visual Impairment Awareness

As you may be aware, Sam James in class 1 at Brington has albinism and is visually impaired. On Tuesday 24<sup>th</sup> January, class 1 at Brington received a visit from Paula Williams who is the Mobility Officer for the visually impaired in Northamptonshire. She (and Sam) explained to class 1 about the difficulties that Sam has and used 'sim specs' in order for the children to understand and actually see what it is like to have a visual impairment. The children had lots of excellent questions to ask and it was great that Sam could answer them so confidently.

Kind regards,

*John Sarbutts*

Executive Headteacher



## **Brington and Whilton Pre-School**

Whilton Village Hall NN11 2NN

[www.bringtonandwhiltonpreschool.org.uk](http://www.bringtonandwhiltonpreschool.org.uk)

Time is quickly going by and we have completed our first term in the new year by looking at Fairy Tales and the morals we learn from them – not speaking to strangers, helping each other, working together as a team are some of the issues we looked at. During the next term we hope to spend more time in the Spinney as the weather picks up and shall be learning more about sharing, manners, being unique and not forgetting Easter.

We would like to record our thanks to everyone who supported our Coffee Morning back in November as we raised an amazing £450, some of which we have used to replace broken/tired toys.

We shall once again be collecting Sainsbury's vouchers, so please remember us when you are shopping. Last year we used our tokens to purchase some football goals, balls, cones and bells. Tokens can be given to any family who attends pre-school or put in the Village Hall post box.

If you have a child who will be 2 years old soon and would like them to attend a small, friendly Pre-school, please come and see what we do by contacting Jenny Holman on 01604 770083 for a visit and for more information.

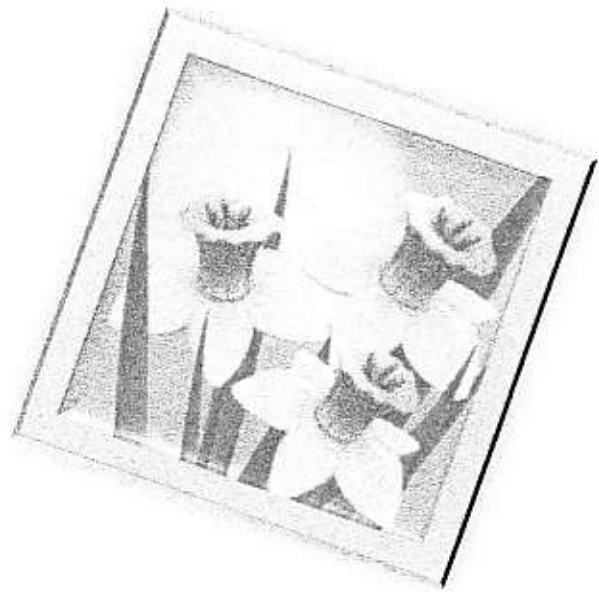
## Once Again

By Cheryl Sandberg

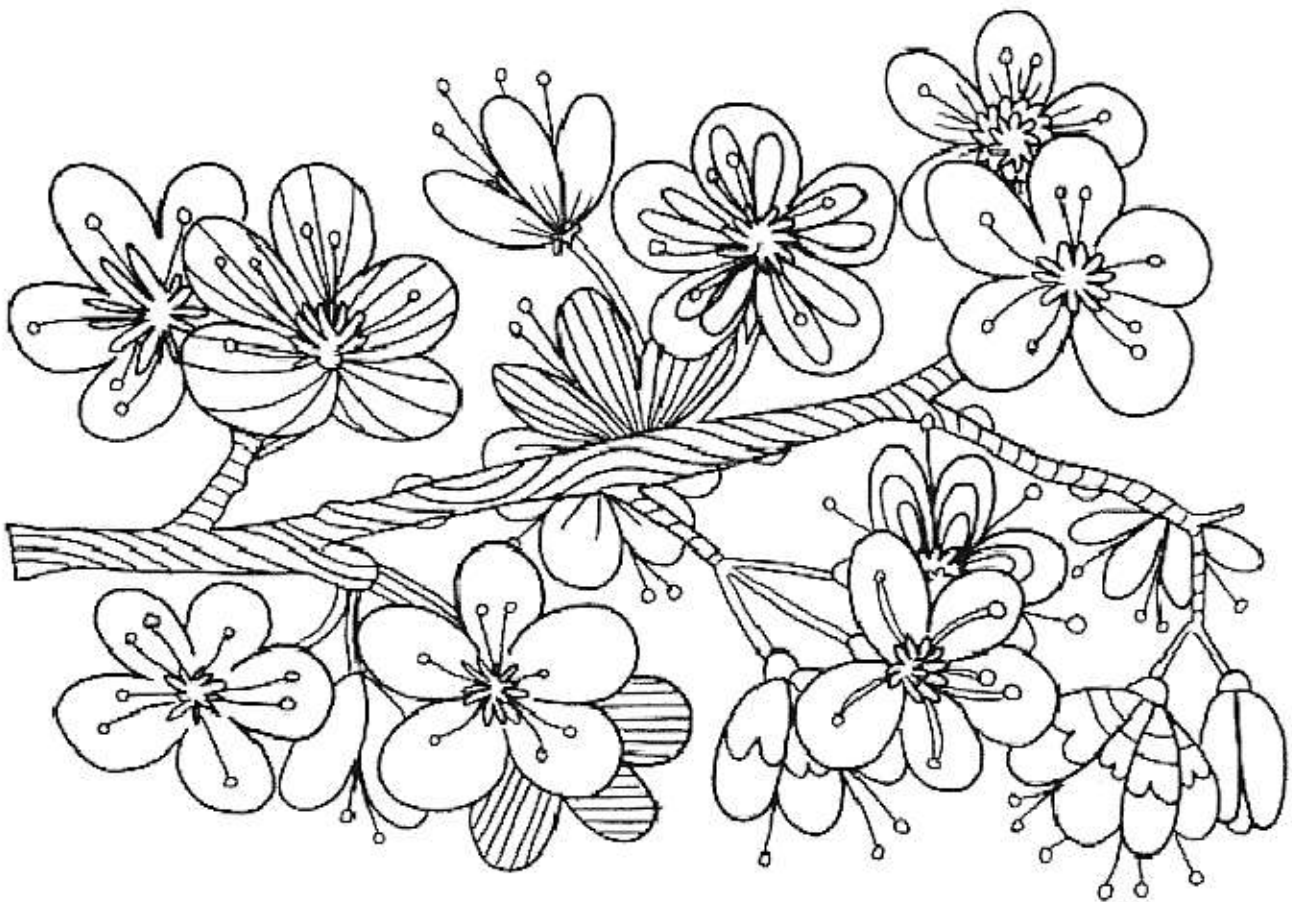
A change has crept upon the land  
the warming touch of nature's hand,  
the bleakness slowly ebbs away  
and spring time lengthens out the day.

While early flower heads emerge  
and green and blossom white diverge,  
the hedgerows slowly come alive  
and woodlands once again soon thrive.

The skies now team with insect life  
their hazy clouds becoming rife,  
and as the days grow warmer still  
the thought of summer breeds goodwill.



## SPRING MINDFULNESS COLOURING ACTIVITY



## Spring Flowers

j s c o w p a r s l e y  
 b r u d e r a f j s g u  
 u f c d s i n h f z w s  
 b s k c a m g o u j x n  
 v c o v q r s g f b a o  
 w o o d s o r r e l d w  
 s w f q d s q a u u p d  
 f s l w g e d m b e f r  
 u l o d j g s s y b g o  
 o i w f o f m o f e o p  
 n p e b s n b n j l d s  
 g h r d f h d s d l a h



bluebell  
 cow parsley  
 cowslip  
 primrose

ramsons  
 snowdrop  
 cuckoo flower  
 wood sorrel

### SPRING PUZZLES

1. Why is the letter A like a flower?
2. Why is everyone so tired in April?
3. What kind of garden does a baker have?

1. A bee (B) comes after it
2. Because they have finished a long 31 day march.
3. A flour garden



The Whilton Newsletter is published quarterly and circulated free to every household within the parish boundary. The costs are met by the Parish Council.

The Editors are:

- Anthea Hiscock, Langton House, Main Street.  
Telephone: 01327 843319.  
e-mail: [anthea.hiscock@tiscali.co.uk](mailto:anthea.hiscock@tiscali.co.uk)
  
- Jon Brierley  
e-mail: [Jbrierley1@aol.com](mailto:Jbrierley1@aol.com)
  
- Sarah Thomas  
e-mail: [sarahlouthomas@icloud.com](mailto:sarahlouthomas@icloud.com)

❖ The Editors welcome material for the Newsletter. If possible, please send your contribution by e-mail. If you do not have a computer, the editors will be happy to type handwritten articles for you.

❖ The next issue will be the Summer Edition, covering June – August 2017.

The last date for contributions will be 20<sup>th</sup> May 2017.

❖ The Newsletter is published quarterly, but Whilton also has a website: [www.whilton-village.net](http://www.whilton-village.net). This contains details of the organizations in the parish, previous Parish Council Minutes and Newsletters and a Picture Gallery. It also has latest news and updates on parish events.

## WHAT'S ON IN WHILTON

### SPRING 2017

DAY	DATE	TIME	PLACE	EVENT
Sun	5 March	11 a.m.	Norton Church	Benefice Sung Eucharist
Wed	8 March	7.30 p.m.	Village Hall	Parish Council Meeting
Sun	12 March	9.15 a.m. 2 p.m.	Church Roughmoor Spinney	Worship for all Work party to lay chippings on paths
Fri	17 March	7.30 p.m.	Village Hall	Local History Society Borough Hill, Daventry Speaker: David Adams
Sun	26 March	6 p.m.	Church	Mothering Sunday Evening Communion
Wed	5 April	7.30 p.m.	Village Hall	Gardeners' Association. The Georgian Gardener Speaker: Michael Brown
Wed	10 May	7.30 p.m.	Village Hall	Parish Council meeting
Fri	12 May	7.30 p.m.	Village Hall	Quiz Night
Fri	19 May	7.30 p.m.	Village Hall	Local History Society Bannaventa in the landscape Speaker: Stephen Young
Sun	21 May	Afternoon	Northampton	Whilton Warblers in Northamptonshire Festival of Performing Arts
Tues	23 May	12.30 for 1 p.m.	Village Hall	Social Lunch

**Regular weekly events include:**

- BRINGTON AND WHILTON PRE-SCHOOL in the Village Hall:  
Term time: Mon, Wed, Fri: 9.30 a.m. – 1 p.m. and Mon, Wed 1 – 3 p.m. for over 3's.
- BELL RINGING at the Church: Mon: 7.30 p.m. - 9 p.m.  
For further information please contact Justin Baker 844263 or Janet Bowers 842851
- WHILTON WARBLERS CHOIR in the Church: Term time: 7.15 for 7.30 p.m.
- For CHURCH SERVICES after 26 March, please see notice board.