

WHILTON NEWSLETTER SPRING 2019



The rhubarb season

March – May

LETTER FROM THE EDITORS
SPRING 2019



As we welcome the spring months many Whilton residents are out in their gardens, preparing for fruit and vegetable growing and for the coming year's flower displays. Some of the events planned and mentioned in this issue reflect this, with suggestions for using one product in particular - rhubarb.

There is also news from the Gardeners Association, who will be concentrating on compost in April. The Allotment Society reports on progress and the Pre-School children's outdoor curriculum includes gardening.

In addition we wish a Happy Birthday to Whilton Locks Garden Village as it celebrates its 15th birthday at the beginning of March. Details are in this issue.

There has been increased activity in the Spinney before new life shows there, and this is included in the Parish Council article.

We wish a good gardening season to all our readers.

The Editors.



CURRENT NEWS AND ISSUES FROM YOUR WHILTON PARISH COUNCIL.

- **The Spinney Management Group (SMG).** The Roughmoor Spinney in Whilton Village has been open to the public since 2000, and has been developed, maintained and managed by a Spinney Management Group of volunteers from the Parish. However, the Group have lacked a Chairman and Secretary for some while, despite repeated requests for volunteers. Hence, in a meeting with the Parish Council on 20 Feb 19, it was agreed that the Parish Council would now take over the running and Chairmanship of the SMG, including it as an agenda item at the Parish Council meetings. The SMG will still maintain an active Working Party for maintenance activities in the Spinney, and a core of active members to run the Spinney activities, all under the guidance of the Parish Council.

- **Whilton and Whilton Locks E-Mail Distribution List. T**

The Parish e-mail distribution list continues to grow apace, with more and more people asking to be included so that they can be kept informed of the latest issues and information concerning the Parish. Previous issues notified have included thefts in the area, suspicious activities and planned road closures.

If you are interested in being added to the list for the Parish to find out what is going on in the Parish, please send your e-mail address to clerk@whiltonpc.co.uk.

- **Broadband.** We now have a slightly clearer picture of when and how the Northamptonshire Superfast Broadband Project will be coming to the Parish. The chosen company (Gigaclear) will be coming to the Parish to provide us with superfast broadband, and have confirmed dates following a meeting with the Gigaclear Programme Manager in Brington.
 - The installation plan for Brington will include Whilton, with installation due to commence in both areas in Jun 19, finishing end Dec 19. Whilton Locks is due to commence installation in Q1 Dec 20.
 - Gigaclear have detailed that there are a number of factors which could/will influence these dates (eg. Weather, wayleaves etc).
 - As each resident opts to be connected to the network, they can go live as the network continues to be rolled out.
 - The fibre optic network will be entirely separate to any BT network, and be run to each household who choose to be connected to the network.
 - The speed you pay for with Gigaclear will be the speed you get, unlike BT who quote a theoretical 'up to' speed.
 - During the installation phase, the Gigaclear marketing team will do a presentation to the Parish, with special offers being made available if you sign up on the night etc. They provide a variety of packages and speeds of 50Mbps up to 1000Mbps. Full details are at www.gigaclear.com.

- **Coffee Morning with Chris Heaton-Harris MP.12 April 2019.** Chris is our Member of Parliament for Daventry who was planning to have a coffee morning with the Parish to discuss issues and concerns. Unfortunately, he has been tied up with some urgent matters in Parliament – something about Europe, backstops and borders apparently. Hence, the planned coffee morning for 11 January, then 22 February, had to be cancelled at short notice. The new date of Friday 12 April 2019 has now been agreed, where Chris will be holding a joint coffee morning from 09.00 to 11.00 with the Parishes of Whilton, Norton and Brington in the Reading Rooms, Main Street, Brington NN7 4JA. Formal details should be issued nearer the time, and maximum attendance for each of the villages is encouraged.
- **Great British Spring Clean 2019 – 22 March – 23 April 2019.** There is a national initiative to make history by having the Great British Spring Clean 2019 become the country's biggest-ever, mass action environmental campaign, where the plan is to inspire 500,000 people to join forces to clear litter from our streets, parks and beaches.

To support this plan, and as part of our regular litter picks within the Parish, we will be holding our next litter pick from 10.00 to 12.00 on Saturday 30 March 2019, meeting up on the village green in Whilton. Full training and equipment is provided, and it provides an ideal opportunity to take part in this historic national event, getting people out and keeping the Parish clean. All are welcome to come along and help.

- **Dog Mess Around Whilton Village.** Unfortunately, there seem to be increasing occurrences of dogs messing through, and around the village, and irresponsible owners failing to pick up after their animals. In addition, there are also a number of owners who appear to allow their dogs to run freely through the village, particularly in the evening period, and this leads to further occurrences of dogs messing in the area. These matters have been reported to the Daventry District Council, who are investigating and will prosecute offenders. In short, it is of paramount importance that if you choose to keep a dog, you should be a responsible owner and look after your animal. Pick up the poo after it, bag it and bin it in any bin. Also make sure that your dog cannot escape from your garden to cause issues and concern elsewhere.
- **Daventry Area Community Transport (DACT) Service.** A DACT bus service was established to run from Norton to Northampton, and was available to Whilton and Whilton Locks Parishioners who needed to travel for medical appointments, shopping trips etc at cost. However, the contract with the last operator has now ended, and no replacement service has been sourced by the Northamptonshire County Council. The Parish Council are reviewing alternative funding sources to try to keep the service active, but that also depends on how much of a demand there is for the service from the Parishes concerned, namely Whilton, Norton and Brington. To try and gauge this for our Parish, if you feel that the service would be fully utilised by yourself and is beneficial to keep operating, please contact the Clerk at clerk@whiltonpc.co.uk to tell us your views.

- **Defibrillators.** There are 2 defibrillators located within the Parish - in Whilton (by the Village Hall) and Whilton Locks (next to the BT phone box on the canal bridge). Each cabinet is locked with a code, which can be obtained from the emergency services when you dial 999 should they be required.
- **Whilton Parish Council Website.** The Whilton Parish Council also do have a website at <http://www.parish-council.com/whilton/> which details all the work that they are doing for the community, together with any notices of interest for the Parish. There are also details of who your councillors are, and how to contact them about any matters relating to the Parish.

Of note, the e-mail address is councillors@whiltonpc.co.uk.

The Council also hold a regular meeting in the Whilton Village Hall every 2 months, which is open to the public to attend and raise any issues.

Randal Smith
 Rose Briar
 Chair of the Whilton Parish Council

Whilton Allotment Gardens

VACANCY

One of our half plots has just become available

.If you would like to enjoy allotment style gardening immediately and enjoy being outside, producing vegetables and fruit with support and encouragement from existing plot holders now is the time to start.



Please contact Brian Melling at brianmelling47@gmail.com for more information. Plot fees are very reasonable.

ST ANDREW'S CHURCH

A MESSAGE FROM THE RECTOR

March begins with St David's Day, which this year is on a Friday. Our usual first Friday in the month Communion service will take place at East Haddon on that day, and we shall give thanks for this remarkable saint, who in the sixth century established a community of monks at what was then called Minevia (now St David's), and who is of course revered as the patron saint of Wales.

Although I have no Welsh connections, the Christian name which my parents gave me has led to a feeling of particular regard for St David, though I confess that his rigorous moral and spiritual standards are not easy to emulate – at any rate in my case. He apparently led a very spartan life, and required his fellow monks to do the same. Their diet was sparse (mainly vegetarian), and there were frequent days of fasting and physical discipline. It is said that David himself regularly stood for several hours in a freezing pool of water and recited the Psalms, and slept on either a board or the bare floor with little or no covering.

Practices such as these may strike us nowadays as eccentric, or even psychologically dangerous; yet this should not blind us to what is a desirable element of discipline in the life of all of us. Hard on the heels of St David's Day comes Ash Wednesday, and each year the season of Lent gives us an opportunity of taking a fresh look at our habits and priorities. I for one am not always good at giving up something for Lent, but I am going to have a fresh try at doing so this year, and I invite you to consider this as well. Deliberately to go without something we enjoy, or which gives us comfort, is never easy, and I guess that all of us would shy away from the thought of appearing smug or spiritually superior when we say no to alcohol, chocolate, or whatever else is our particular pleasure.

Yet Lent is never meant to be a grim or masochistic affair: rather, it is a chance for us to let go of something on which we rely (perhaps sometimes too heavily), and thus to discover a new freedom. Furthermore, taking on something in Lent is just as important as giving something up, and the 'taking on' might include setting aside time for some spiritual reading or reflection, or spending time with someone who needs some support and friendship, or simply making up our minds to engage with a task or challenge that we have been putting off for a while.

God bless you all this Lent. May it be a real springtime for each one of us.

Your sincere friend and Rector,

David Painter



A NEW PRIEST AND PASTOR FOR THE BENEFICE

I imagine that by now most people probably know that the Bishop of Peterborough has appointed the Reverend Andrea Watkins as the new Rector of the Spencer Benefice, and she will be instituted and licensed to her ministry on Sunday 2 June.



Whilton Church photographed in 1975

At present she is the Rector of Blisworth and four other villages near Towcester, and so she already has experience of ministering in a multi-parish rural benefice. I am sure she will welcome the opportunity of introducing herself more fully in a future edition of the newsletter, but at this stage let me simply say that she grew up in Duston, and so knows the local area well; furthermore, she is married to Peter, and they have two grown-up children.

All this means that it will soon be time for me to say good-bye to you, and to return to the retirement from which the Bishop persuaded me to emerge two years ago. It has been a joy to minister in these lovely villages and to get to know so many of you, and part of me would have loved to stay here longer. But my appointment as your Rector was never meant to be more than a temporary one, for it is plain that this large benefice needs a full-time parish priest, and moreover someone younger than I, if the congregations are going to grow, spiritually as well as numerically. That is my prayer for all of you, and I look forward to ministering among you for a further three months, after which I am confident that some very good and exciting times lie ahead.

David Painter

St Andrew's Church

**We will be holding our Annual Meeting in church on Monday 1 April at 7.30 p.m.
All are invited and welcome to attend.**

The church electoral roll has to be revised this year. It is a new list so even if you are on the existing roll, you have to re-apply. Being on the roll enables you to vote at the AGM and also signifies that you belong to the church community. Applications must be submitted by 11 March in time for publication before the AGM.

We hope that current members will re-apply and also encourage you to add your name if you are not on the list or have moved to the village since the last roll was completed.

Jon Brierley and Linda Treacy
Churchwardens

WHILTON ALLOTMENT GARDENS

This is just a short article which could become a regular feature if people are interested.

When I am working on one of the plots, whether in the company of others or on my own, I reflect how people have engaged in similar healthy activity over many years. Once upon a time it was a necessity before the coming of town shops and supermarkets to feed yourself and family.



Now it can be an engaging activity although you can be struggling against the vagaries of the weather and "predators" such as pigeons, slugs and butterflies.

The Gardens located half way down Main Street opposite The Old Post Office have been allotments for several generations, and are much more convenient than the older allotments first on Whilton Hill and later at the top of the hill. After the war their use and popularity were a spin off from wartime privations and the persistence of rationing, and over the intervening years they were the setting for strenuous exercise and community spirit.

I have been involved for the last ten years and seen the members change in personnel and character. Recently the "plotters" formed a group to endeavour to gain strength when negotiating with the previous Parish Council. We formed the Whilton Allotment Group and put several proposals forward gaining recognition that we were a responsible mini-community who could be trusted to get on with things and look after our own plots responsibly and keep the whole area tidy and attractive.

Last year the present Parish Council took over ownership from Daventry District Council, thereby protecting this valuable space from the "planners." Other would-be gardeners throughout the UK have not been so fortunate, either losing their plots or being prevented from setting up community gardens.

WAG is a member of the National Allotment Society which provides advice and guidance and news from around the country and individual and collective insurance against injury to gardeners and visitors alike. In 2017 the Whilton and Brington Pre-School took over one half plot and this now provides an interesting, safe and attractive space for outdoor learning throughout all the seasons of the year.

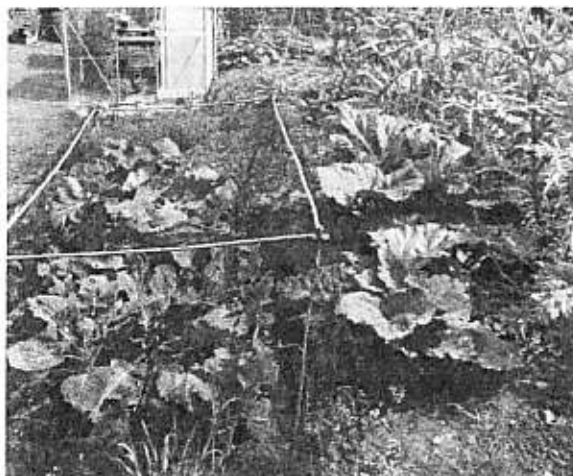
If you would like to join our village community please get in touch with me:

Brian Melling at no 3 South View

or email brianmelling47@gmail.com

RHUBARB

Although the best early forced rhubarb traditionally comes from the Yorkshire Rhubarb Triangle, very good rhubarb is harvested from Whilton gardens through the spring.



Rhubarb and brassicas in a Whilton garden.

MARIAN'S RECIPE FOR RHUBARB GIN

Ingredients:

1 kg rhubarb stalks

400g caster sugar (not golden caster sugar – it muddies the colour)

800ml gin – no need to use expensive gin, a supermarket brand works very well!

Large glass jar with air-tight lid or screw top.

Method

1. Wash rhubarb, discard base and leaves.
2. Cut into 3cm pieces and put into jar with the sugar.
3. Shake really well until rhubarb is covered.
4. Leave overnight or for 24 hours.
5. Pour gin over and shake well.
6. Leave for 4 weeks, shaking periodically.
7. Strain and transfer to bottle.
8. ENJOY! It is really enhanced if served with Ginger Ale, but Tonic Water is also good.

Tips

- More liquid is released after the main straining, so do not discard rhubarb immediately.
- Try putting pieces of the rhubarb into ice-cube trays and freezing to add to other drinks.
- Myra(Holmes) suggests putting the jar into a box in the boot of your car and then it gets agitated as you drive – but it really isn't such an effort to shake it!
- Raspberries or redcurrants could also be used instead of rhubarb.

Marian Seal

As spring moves towards summer, there will be rhubarb and elderflowers in our gardens and hedgerows and perhaps some very early strawberries in the shops.



RHUBARB AND ELDERFLOWER JAM



- 3 kg (6 lb) rhubarb
- 12 – 18 heads of elderflower
- 3 kg (6 lb) sugar
- Grated rind and juice of 2 lemons

1. Wipe the rhubarb and cut into chunks of 1 cm. (1/2 inch)
2. Place in a bowl, layering with the sugar.
3. Tie the elderflowers in a muslin cloth or jelly bag and place in middle of rhubarb.
4. Leave to stand for 24 hours.
5. Transfer to a preserving pan and bring to boil. Boil for 2 -3 minutes.
6. Return to bowl and leave to stand another 24 hours.
7. Remove the elderflowers.
8. Add the grated lemon rind and juice and transfer to preserving pan.
9. Bring to the boil and boil rapidly until setting point is reached.
10. Pour into warmed jars, cover and label.

This makes about 5 k (10 lb) of jam with a soft set.

RHUBARB AND STRAWBERRY CRUMBLE

This was served at a Whilton Social Lunch in 2013.



- 2-4 rhubarb stalks, cut into slices 2cm thick
 - 250g strawberries, hulls removed, large ones cut in half
 - 165g plain flour
 - 50g soft light brown sugar
 - 150g rolled oats
 - 125g unsalted butter
1. Preheat oven to 180°C/Gas 4.
 2. Place the rhubarb in a deep pie dish. Toss the strawberries with a tablespoon of the flour and add to the rhubarb. Sprinkle half the sugar on top.
 3. Put the oats, butter and remaining sugar and flour in a food processor and pulse until the mixture starts to come together.
 4. Spread the crumble over the fruit and bake in the oven for 35-40 minutes, until the rhubarb is tender and the crumble is browned.
 5. Serve with cream or custard.



WHILTON GARDENERS' ASSOCIATION



We held our AGM on 6th February with 18 members attending. After the meeting we split into three teams for a quiz, accompanied by wine and nibbles.

Our programme for 2019 is as follows:

- 3rd April - Pauline Pears, Home Composting.
- 5th June - Whilton garden visits and social/buffet, details nearer the time.
- 7th Aug - Andrew Mikolajski, Roses - History and Best Varieties.
- 2nd Oct - Andrew Sankey, Cottage Gardens.
- 4th Dec - Members' Christmas Social.

We have moved our garden visits and social evening to June this year, following members' comments that the gardens tend to be past their best by August. We are looking for two or three volunteers to open their gardens for us on June 5th.

We are also hoping to organise a trip in July as we have done for the last few years and are looking at several possibilities. Watch this space!

Our annual membership costs £15 per person. If anyone would like to join WGA please get in touch with our membership secretary, Maurice Archer, on 01327 843081, or the chairman Roy Haynes on 07879861673, email royandtricia@btinternet.com

WHILTON LOCKS GARDEN VILLAGE



Join us for our 15th Birthday Celebrations
There's 15% off in store 11am - 4pm
on 2nd March and 3rd March -
the manager has March Madness!
Some exclusions apply - see in store for details.
FREE CUDDLE SESSION & FACE PAINTING



SOCIAL LUNCH - TUESDAY,
12TH FEBRUARY 2019



The weather was very pleasant for February but still cool enough for us to appreciate a delicious, hearty chicken casserole with green vegetables and potatoes. There was also a tasty cauliflower cheese dish as an alternative to meat. The usual varied desserts followed: - apple pie, baked treacle pudding, lemon meringue pie and fruit salad. These were served with custard, cream and ice cream. Fruit juice and elderflower were also available.

This was a particularly happy occasion as it was Teresa's birthday and a quite tuneful 'Happy Birthday to you' was sung. She kindly provided chocolates to have with our teas or coffees to mark the day.

Please note that the next Social Lunch will be on Tuesday 21st May.

You are very welcome to come and join us.

WHILTON VILLAGE HALL 200 CLUB

The February lunch was followed by the **200 Club** draw with the following results:

200 CLUB 2018/19

JAN 2019

1ST PRIZE	R Smith	189
2ND PRIZE	M Kane	026

FEB 2019

1ST PRIZE	Martin Emery	051
2ND PRIZE	S Thomas	103

MARCH 2019

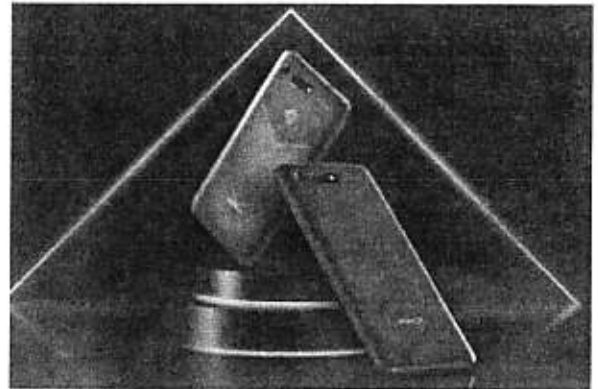
1ST PRIZE	M Thomas	046
2ND PRIZE	B Eyton-Jones	044

CONGRATULATIONS TO OUR WINNERS

Aperture Photography Group

Back in the day we all had film cameras - remember them? Thirty-six images on a roll of film was all you had before you had to send it off for processing. Over the last few years the number of film cameras being used as plummeted as digital cameras have taken off. Yet the compact cameras and DSLRs we all used are themselves now being overtaken by new pieces of technology. So what's new?

Compact cameras used to be all the rage, but recently the number of models has fallen away due to the rise of the phone camera. Most of us now use our phones to capture snaps and we're happy to share them with our friends and family using social media. The latest phone cameras however go way beyond what the compact cameras of just a few years ago could achieve. The new Honor View 20 from Huawei boasts a high resolution sensor which can take amazing images. The phone takes several pictures at once and then collates the best details from each photo to create one 48MP image, so eliminating the need for a tripod. And all this for just £499.



We are also starting to see the demise of the DSLR camera as a new form of high-end camera gains hold. These cameras are known as mirrorless, as unlike a DSLR, they do not need to fit in a mirror and a prism. A mirrorless camera body is therefore smaller than a DSLR, with simpler construction. In a mirrorless camera, light passes through the lens and right onto the image sensor, which captures a preview of the image to display on the rear screen or electronic viewfinder. This preview shows exactly how the captured image will look based on how you have set your camera; I have found this significantly reduces the number of exposure issues. The big camera companies of a few years ago, Canon and Nikon, are finding the early developers of mirrorless cameras (Sony, Fujifilm and Panasonic) are stealing their market share while they struggle to play catch up. Watch this space!



The Aperture Photography Group offers a range of activities, including regular meetings, training workshops and outings. If you have a camera and would like to learn how to use it, or if you are a more experienced photographer and would like to share your interest with others, please get in touch.

Meetings are held in the back room at The Saracen's Head in Little Brington at 8pm. The dates of our forthcoming meetings are:

March 14th and 28th
April 11th and 25th
May 9th and 23rd
June 6th and 20th

For more information, contact Neil Phillips on 01327 844182 or via email - neil.apg@gmail.com

Brington and Whilton Pre-school



The children of Brington and Whilton Pre-school have had a busy term learning about the topic of- "All about me".

They have been looking at using their listening ears and kind hands at pre-school. We have talked about their different feelings, tried yoga and have loved the music sessions. We have looked at different types of families and homes and talked about the months the children were born.

We have learnt about Chinese new year- the year of the pig, they made Chinese lanterns and tried using chopsticks.



We planted our real Christmas tree at the allotment to reuse next time and we hung a nesting box in the tree.

We have had regular visits to the Spinney, played in the snow, have had some nature walks, played number games and climbed trees.



If you would like to come and visit us or you would like your child to have a place at our pre-school please contact us on:

07546440572 or managerbandwpreschool@gmail.com

WHILTON LOCAL HISTORY SOCIETY

We have been involved in several activities during the last quarter.

Christmas Tree

At the Christmas Tree Festival the Society decorated a tree to represent the Whilton Penny Readings of the 1860s, when villagers provided their own entertainment.

Thanks go to all who helped with this.

Visit from Daventry

On the afternoon of Sunday 6th January 2019, Twelfth Night, the Local History Society entertained the **History Walking Group from Daventry U3A**. After coffee at the Locks we walked to see the site of the old Wharf House, the Spotted Cow and viewed the curve of the M1 re-aligned to prevent the loss of John Clements' cottage at the Locks. We then moved on the village, visiting the church and its Christmas trees, and noting some of its history.

The afternoon was completed with tea in the Village Hall. Society members provided a superb selection of cakes and scones, which set us off to a good start for 2019. Thank you to all concerned.

Victorian Roast Meal

The **Local History Society AGM** was held on 18th January, preceded as is now the custom by a meal. This year we re-created the Victorian **Whilton Choir Supper**, "of a good substantial dinner of roast beef and plum pudding."

Our meal consisted of roast beef, with accompanying vegetables and Yorkshire puddings, followed by plum pudding with cream, custard or hard sauce (rum butter). We used Victorian recipes, although the length of time for cooking vegetables was shortened for modern tastes. We thank Gordon and Mary Emery whose expert knowledge enabled the purchase of excellent beef, and the cooking team who entered into the spirit of the meal and willingly experimented with old recipes.

There were alternatives for vegetarians and those requiring a less rich dessert. We chose to use custard because Bird's Custard was relatively new but readily available at this time. Alfred Bird was a Birmingham chemist, who found his wife was allergic to eggs and so was unable to eat traditional egg-based custard. In 1837 he invented a cornflour custard and one day it was deliberately or accidentally served to their guests at a dinner party. There was such a positive response to this dish that he began selling the powder in his shop and soon afterwards in his factory. We guess that Whilton housewives would have appreciated this too.



In 2019 we completed the evening with the AGM, but in 1859: *"About eight o'clock the young ladies of the village made their appearance, which indicated that a change of proceedings was about to take place. After a short pause the sound of the violins was heard, and several quadrilles and country dances followed. The meeting separated highly gratified."*

We hope our members were equally "gratified" but less physically exhausted.

There are two meetings planned for the spring. **Please note** that the March meeting is not as published, due to the illness of the speaker. We wish him well.

**WHILTON LOCAL HISTORY SOCIETY
A VOICE FROM THE PAST.**



**An opportunity to hear the recorded memories of Will Adams,
whose life spanned most of the 20th century in Whilton.**

Friday 15th March 7.30 p.m. in the Village Hall

All are welcome.

Charge for non-members: £3

WHILTON LOCAL HISTORY SOCIETY

Friday 17th May

7.30 p.m. in the Village Hall

THE LOST VILLAGE OF THRUPP

**Once a thriving village between Daventry and Long Buckby,
but at the end of the fifteenth century it ceased to exist.**

Come and find out what happened.

Speaker: Jackie Hibbert

All are welcome. Charge for non-members: £3.

Scrambled eggs puzzle
 Can you crack these egg-cellent
 anagrams?

Many wild birds nest and
 lay eggs in spring. Can you
 unscramble these bird names
 and discover who the eggs
 belong to?

1. TIGTREAT
 ----- / -----

2. SUPERSHOWOAR
 ----- / -----

3. HUGSTHORNS
 ----- / -----

Scrambled
 eggs

4. CHCHINFAP
 ----- / -----

5. INBRO
 ----- / -----

**Bird nests and eggs have special protection. It's illegal to take them from
 the wild, thanks to the Wild Bird Act 1954.**

Feel free to copy and share this for personal and educational use -
 and don't forget there are loads more brilliant activities to download on our website!

woodlandtrust.org.uk/naturedetectives 0330 333 5301 naturedetectives@woodlandtrust.org.uk

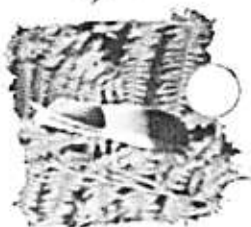
f Search for 'nature detectives' | @NatureDetectives

© Made in 2016 by the Woodland Trust. Registered charity nos 294344 and 50036885 | 9274 04/16





Be a real Nature Detective!
Can you find these spring treasures?



Soft feather



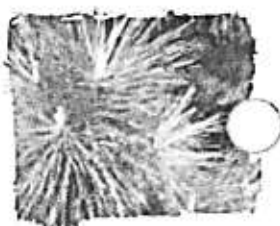
Crunch! A nibbled leaf
You might even find what's nibbling it!



A smooth pebble

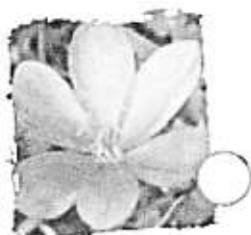


Lacy leaf skeletons



Prickly pine needles

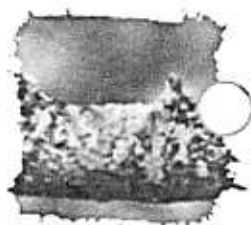
Super spring scavenger hunt



Silky flower petals



Blossom



A lichen-covered twig



New green leaves



Sticky leaf buds



Spring moss



Dewy grass

Remember, only collect items from the woodland floor.

Feel free to copy and share this for personal and educational use -
and don't forget there are loads more brilliant activities to download on our website!
woodlandtrust.org.uk/naturedetectives 0330 333 5304 naturedetectives@woodlandtrust.org.uk
f: Search for 'nature detectives' • NatureDetectives
© Miss B (2016) by SW Woodland Trust (registered charity nos 294744 and 50026185)



The Whilton Newsletter is published quarterly and circulated free to every household within the parish boundary.

The costs are met by the Parish Council.

The Editors are:

- Anthea Hiscock, Langton House, Main Street.
Telephone: 01327 843319.
e-mail: anthea.hiscock@tiscali.co.uk
- Jon Brierley
e-mail: Jbrierley1@aol.com

❖ The Editors welcome material for the Newsletter. If possible, please send your contribution by e-mail. If you do not have a computer, the editors will be happy to type handwritten articles for you.

❖ The next issue will be the Summer Edition, covering June – August 2019. The last date for contributions will be 20th May 2019.

The Newsletter is published quarterly, but Whilton also has a website: www.whilton-village.net. This contains details of the organizations in the parish, previous Parish Council Minutes and Newsletters and a Picture Gallery. It also has latest news and updates on parish events.

Regular weekly events see below. For other events see following page

BRINGTON AND WHILTON PRE-SCHOOL in the Village Hall:

Term time: Mon, Wed, Fri: 9.30 a.m. – 1 p.m. and Mon, Wed 1 – 3 p.m. for over 3's.

BELL RINGING at the Church: Mon: 7.30 p.m. - 9 p.m.

For further information please contact Justin Baker 844263 or Janet Bowers 842851

WHILTON WARBLERS CHOIR in the Church: Term time: 7.15 for 7.30 p.m.

THE APERTURE PHOTOGRAPHY GROUP usually meets fortnightly in the Saracen's Head, Little Brington at 8 p.m. For details contact Neil Phillips on 844182 or neil.apg@gmail.com

**WHAT'S ON IN WHILTON
SPRING 2019**

DAY	DATE	TIME	PLACE	EVENT
Sat	2 Mar	11a.m. – 4 p.m.	Whilton Locks	Garden Village 15 th Birthday
Sun	3 Mar	11 a.m. 11 a.m. – 4 p.m.	Harlestone Church Whilton Locks	United Benefice Eucharist Garden Village 15 th Birthday
Sun	10 Mar	11 a.m	Church	Worship for All
Wed	13 Mar	7.30 p.m.	Village Hall	Parish Council
Fri	15 Mar	7.30 p.m.	Village Hall	Local History Society: A voice from the past.
Sun	24 Mar	6 p.m.	Church	Eucharist
Sat	30 Mar	10 a.m. – 12 noon.	Meet at Village Green	Litter Pick
Mon	1 April	7.30 p.m.	Church	PCC Annual Meeting
Wed	3 April	7.30 p.m.	Village Hall	Gardeners Association: Home composting
Sun	7 April	11 a.m.	Church	United Benefice Service with coffee served from 10.30 a.m.
Fri	12 April Changed date	9 – 11 a.m.	Brington Reading Rooms	Coffee morning with Chris Heaton Harris MP
Palm Sunday	14 April	11 a.m.	Church	Worship for All
Easter Sunday	21 April	6 p.m .	Church	Eucharist
Sun	5 May	11 a.m.	TBA	Eucharist
Wed	8 May	7.30 p.m.	Village Hall	Parish Council
Sun	12 May	11 a.m.	Church	Worship for All
Fri	17 May	7.30 p.m.	Village Hall	Local History Society Lost village of Thrupp
Sun	19 May	TBA	TBA	Church service
Mon	20 May			Last date for Summer Newsletter contributions
Tues	21 May	12.30 for 1 p.m.	Village Hall	Social Lunch
Sun	26 May	TBA	TBA	Church service

Regular weekly events: see previous page