

# WHILTON NEWSLETTER

OCTOBER 2002



## NEWS FROM ALL AROUND THE PARISH

In this issue we thought we would concentrate on the young people in the parish.

The progress they have made and the challenges they will face is described by themselves and others close to them.



**MORE PICTURES OF THE WHILTON JUBILEE CELEBRATIONS ON MONDAY 3RD JUNE 2002 SHOWING THE EVENT WAS ENJOYED BY ALL**

## ***IN BRIEF.....***

**COUNTY LIBRARY SERVICE** - *Just a reminder that the library van calls in the village every other Tuesday (except Bank Holidays) at approximately 9.10 am to 9.30 am. The van generally parks near The Old Plough, Main Street. Good use needs to be made of this service if it is to be retained; why not make a visit to the van for your reading material? The OCTOBER dates will be 8<sup>th</sup> & 22<sup>nd</sup> and NOVEMBER dates will be 5<sup>th</sup> & 19<sup>th</sup>.*



**CONGRATULATIONS** - *To Rosemary & Clive Sabel on the birth of their son Arvid Eric on 5<sup>th</sup> September 2002 (7lbs 10 ozs). A grandson for Anthea and Keith Hiscock*

## **NEWS OF THE YOUNG PEOPLE FROM OUR VILLAGE**

The editors would like to run a series of articles from other families whose children grew up here and are settling into careers and taking up new challenges.

We welcome your contributions and to start the series we have secured the following articles.

### ***The Hiscocks Exceptional 12 Months***

**Rosemary**, the eldest daughter of Anthea & Keith married Clive in November last at Holdenby House. Rosemary met Clive at St Andrews University and this year they moved to Sweden in May to do further research in Health Inequalities at the Medical University in Stockholm.

The wedding reception was delayed until the end of June this year and took place in a marquee at Langton House.

Rosemary gave birth to a beautiful (of course !) grandson for Anthea & Keith on 5<sup>th</sup> September 2002 in Sweden.

Their daughter **Penny**, not to be outdone, was married to Lee at the beginning of March this year in Leigh, near Manchester where she has happily begun married life. She has recently been organizing activities in an older person's Home.

**Abigail** took her GCSEs this summer and her results were **11 A\*** and **1 A**. This has led to many more questions about the **A**. This is in Spanish but the story is interesting as this was achieved through a Champion teacher giving her an after school lesson one day a week for two years. It was christened "Twilight Spanish". This was laid on by the headmaster in order to honour their grant obligation to ensure each pupil took two languages.

Abigail had insisted she be allowed to take all three humanities – history, geography, and religious studies, not just two. It says a great deal for the flexibility and commitment of the school that she has returned this with interest as we were told her overall performance was the best in the county, just pipping a number with 10 A\* at other schools and a young man at Champion with 10 A\* and 1 A.

## ***The Tibbs Family***

Linda & Derek Tibbs have every reason to be proud of their daughter **Sarah**. Sarah attended Brington School and then went on to Campion and during that time she was a member of the Northampton Youth Orchestra. She played a viola over a period of four years and toured Canada and also played at the Royal Albert Hall. Sarah will be getting married at St Andrew's Church Whilton next April. Below is an interesting article sent by Sarah.

.....

I began research for my Ph.D. in the Department of Earth Sciences, University of Bristol, after completing my degree in Geology at the University of Birmingham. My chosen research topic was 'Mineralization of fossils from the Lower Devonian Hunsrück Slate, Germany'. In other words, I set out to discover why some 390-million-year-old fossils from a slate deposit in Germany are so exceptionally well preserved compared to most fossils. The unusual thing about Hunsrück Slate fossils is that the soft parts like skin and muscle tissue are preserved. Normally these parts of a dead animal rot away within hours or days, leaving only the hard parts like shells or bones to be fossilized.

A further interesting feature of the fossils from the Hunsrück Slate is that the soft parts are preserved by pyrite ('Fool's Gold'). Only three localities world-wide contain fossils with soft parts preserved in pyrite. They are rare even within the Hunsrück Slate; the slate is found across a large area of south-western Germany, but well-preserved fossils have only been found in the slate extracted from the Eschenbach-Bocksberg Quarry. Incredibly, this quarry has been active on various scales for over three hundred years, while slate mining in the region dates back to Roman times. Thousands of fossils have been discovered during the history of the quarry. This is because pyrite contains iron, which rusts, causing the slates to split and crack. Slates containing fossils are therefore unsuitable for roofing and are discarded after extraction to be sold to fossil collectors, providing an extra source of income for quarry workers.

My research began with a visit to Germany, to see for myself the fossils and the quarry from which they came. I was also introduced to the German-led international research team working on the Hunsrück Slate ('Project *Nahecaris*', named after one of the famous fossils from the slate). My role was to document occurrences of fossils throughout the slate, in order to predict where the well-preserved fossils might be found in future. In reality, this meant a total of nearly four months spent at the German Mining Museum in Bochum, sifting through endless piles of slate from the quarry. This only served to highlight how rare the fossils are even within the Hunsrück Slate; in all the time I spent there, I only found two well-preserved specimens!

Another part of my work involved cutting up the fossils using a circular saw and a dental drill, so that I could examine the interior of the fossils using a scanning electron microscope (SEM) and an electron microprobe (EM). These instruments allowed me to determine which parts of the fossils were mineralized first and which minerals were present in addition to pyrite. This helped to build up a picture of everything that happened after the death of the animal.

My results showed that the animals that were fossilized were buried in unusual sediment that was very rich in iron. This and many other factors mean that the fossils are extremely rare. There is, however, a large amount that we can never know for certain. This is perhaps the most frustrating and intriguing, yet enjoyable part of such research. No matter how hard you work, there will still be parts that remain a mystery. In this respect, my current challenge is very similar: teaching science to secondary school children!



**A rare form of fossil plankton from the Hunsrück Slate (SEM image).  
This is approximately 0.1 mm in size**

Dr. Sarah Tibbs  
5 South View

**Pete Howley is a young man who now lives in our village and is concerned enough to take up a challenge of a lifetime.**



Dear Whilton Parishioners

In February 2003 I will be taking up the biggest challenge of my life. I am going to Tanzania to take part in the Mt Kilimanjaro Hike Away for Scope, formerly The Spastics Society. We will be trekking for five days to reach the summit of Africa's highest mountain. The route will take us through jungle, moorland and snow, with temperatures ranging from tropical to sub-zero.

The most exercise I ever usually take is running for the bus! This year is dedicated to getting myself into training for the challenge of a lifetime. The reason I am doing this is to help people with cerebral palsy.

Every six hours a baby is born with cerebral palsy in Britain. It can happen to any child. Scope is the largest charity in the UK working with disabled people, their families and carers.

This is a fundraising event. I have pledged to raise £3000 – the cost of a purpose-built bath with a hoist, enabling someone to live in their own home. Other aids that donations can help are £6 – an adapted potato peeler , £35 - a large switch , for use with a computer instead of a mouse, £50 – a physiotherapy mat and £160 one night's respite care.

To set the ball rolling I have donated £150 myself. I need your help to reach my fundraising target. If you could please send me just £100, your donation would bring me much nearer to reaching my goal.

Another way of giving is through Gift Aid ( but only if you are an individual tax payer), where the government reimburses Scope with the tax you have already paid on the gift – at no extra cost to you. Should you wish to give in this way, please phone me on **0327 843116**.

If you can help in any way, please fill in the form below and return it to me with a cheque made payable to **Scope by Monday 16<sup>th</sup> December 2002** , thank you so much for your help. I will let you know how my hiking experience goes and how many blisters I endured.

**Pete Howley  
2 Roughmoor Cottages  
Whilton**

**Yes, I would like to support Scope**

Here is my gift of £10  £20  £50  £100  other

I enclose my cheque made payable to Scope

Name .....

Address .....

..... Postcode .....

Telephone .....

## Editors plea for Co-operation

Although a deadline for receiving reports and articles is given in each issue of the newsletter, unfortunately there are very few people that conform to this request.

Receiving articles and reports and processing in certain cases is extremely time-consuming and unfortunately too we sometimes have to chase for articles from regular contributors. This creates a tremendous task in getting the newsletter together for printing and then to the people who kindly distribute to each household.

We seek the co-operation of the individuals involved to submit articles to us in good time and not leave to the deadline. For the future no reports etc. will be accepted for the current issue that are received after the deadline.

Finally, it would be encouraging to hear whether households find the newsletter interesting or have any suggestions to offer.



## EAST MIDLANDS IN BLOOM



Sadly Whilton has not been placed in this year's competition results, although the judge did remark on what a pleasant village we have.

The majority of Whilton did look tidy due to the care and work of the residents but it only needs one or two front verges looking untidy or unmown to lose valuable points in the marking system. Also this year the new idea of annual seed sowing instead of approximately 250 bedding plants in the wall bed by the church did not prove successful. With only a few bedding plants to replace the seeds, this did not create much of an impression.

The judging was earlier this year and the hanging baskets and boxes had not come into full bloom. In later weeks more baskets appeared.

Those chosen by the judges for the Whilton Gardeners' Association Award were:-

**1st**

**Kathleen Wright**

**Runners -up**

**Don Welch & Janet Bowers.**

Janet Bowers, Co-ordinator



## THE WHILTON SPINNEY PROJECT



Progress in clearing the paths to improve access is being made, even though there are only four of us who regularly work down there on Sunday afternoons. Perhaps when we plant trees and start to clear the ditch and tidy up the pond over the autumn period we will attract more Whilton conservationists.

We have received no suggestions as yet for a permanent name for our spinney but hope that some of you will come up with ideas in the near future.

Watch the noticeboard for Working Party dates.

**Whilton Spinney Management Group**

## PARISH MATTERS!

The Parish Council met on the 16<sup>th</sup> September in the presence of three very welcome members of the public. There were apologies from Lindon Morris, Andy Walton, and the Amos's. There was continuing evidence that it had been a busy summer.

### Planning

Two planning applications had been received and the public notified via our notice boards. Tea rooms were to be created from the old offices at the Marina, and alterations to the Old Courtyard were planned. There had been no request to discuss these and no comment had been sent.

### Survey Results

Both proposed surveys/consultations with residents on naming the area off mainstreet around the green and concern about engine noise from the Mill track had been completed. 5 of the 7 residents involved had replied to the Clerk over the street name and the clear preference of choices suggested was The Green. It was agreed this should be submitted to the District Council. Meanwhile negotiations over the position of the saltbin should be concluded and residents who had contacted the clerk over memories of its community use seen. The Clerk is still looking for a volunteer to undertake the rewarding role of co-ordinating the registration application. **Offers please.** The second survey on the Mill noise was presented separately and is included in this newsletter. The response has been excellent with a 75% return. The Council is to follow up a recent more conciliatory letter from the Mill by arranging a meeting to compare the two surveys and try to find a way forward to which DDC can again be invited. There was some concern about a late factually incorrect reply from the earlier contact with the Environmental Health section of the DDC sent by planning enforcement for some unknown reason which the clerk was asked to address with them.

### Improvements

The Council and Cllrs Mr and Mrs Amos had had an interesting walk around the village on 2<sup>nd</sup> September to gather suggestions for improvement. They had put 16 items down for further discussion and prioritizing. Most it was discovered were the responsibility of other authorities whom the clerk was asked to contact eg. The flaking phonebox paint, the perished bricks at the bottom of Southview steps, and the damaged surround to the BT manhole cover in Manor Lane. There were some old themes needing reiteration with Highways- water on the road in bad rain, fence at Southview, and more perished surface opposite Langton Rise. The movement of the speed restriction posts at both end of the village was again asked to be pursued. However Highways has meanwhile written to indicate that our class of road would only be inspected once a year and be attended to once in five years! The Council wished the Clerk to write to them over all these issues.

There were however some developments in which the Council could play a part. Ken Bowers hopefully with help will repaint the officially redundant triangle signpost at the bottom of the village. The Council would also like a volunteer to overhaul and re weatherproof noticeboard on the green if it supplied the materials. (**Any offers please?**). The Council will consider putting small posts along the edge of the green as part of its adoption programme. The walkers were pleased to see the new street light installed by Rose Cottage ( a cheque for £425 was signed at the meeting) and to hear from our Pathway Warden Maurice Clements that NCC money for some new stiles may be given.

**The whole exercise had been so worthwhile that it was agreed not only to repeat it but to extend it to the Locks.**

### **Audit Report**

Matters financial had to be covered as well in the busy meeting. A number of payments, authorized to keep creditors happy during the summer, were confirmed by the full Council. This included one for the independent auditor from NALC for the new annual system. Dr Waterfield was to meet the clerk this week and the audit notices for the last year were to be put up. The Clerk was pleased however to report the successful conclusion of the audit for 2000-1. There were only two matters for the Council to note. Some small purchases made by parishioners on behalf of the Council had not got VAT receipts so would remain unreclaimed. This should be avoided. The auditor also indicated the need to continue the new practice of putting the year date on the Minutes. The Chairman then signed the official receipt for the Report.

### **Other Matters( including a new threat)**

Finally there were a number of other items including the invitation to the Civic Service at Flore for our Councillor Wendy Amos as the new Chairperson of the District Council, and the Parish Council's responsibility to promote Race Relations, but clearly of more lasting importance to the village was the possibility of **a new Airport at Long Lawford. This apparently would be bigger than Heathrow, close Birmingham and Coventry Airport, and have stacking and flight paths above us dwarfing concerns about noise from the Mill!!** The clerk was asked to register our concern with the District Council and be able to brief members at the November Meeting to contribute to the Consultation which ends at the end of November. However everyone in the village should appraise themselves and take what ever action they see as necessary.

**Our next meeting is on 4<sup>th</sup> November at 8pm. Never a dull moment! See you there!?**



**WHILTON PARISH COUNCIL**

**Whole village Questionnaire on Engine Noise from Whilton Mill Grand Prix Karting Track**

The following is a copy of the Questionnaire we sent out and the results

“The Parish Council has received some conflicting comments and complaints about the noise nuisance since the new track opened. There have been a number of complaints made to Councillors that have been handed on to the Mill Management and District Council. The Mill Management understand from their researches that this is not of concern to most residents.

The Council wishes to fully understand the extent of the problem by clarifying who is being affected and in what way. Facts can then inform its continued discussions with the Mill Management. This survey would also be particularly important in helping the Council to respond in the event of any future proposals or planning applications to expand such activities at the Mill.

The Council hopes therefore you will feel able to complete this short Questionnaire. Please circle the most appropriate answer for you. A volunteer will call to collect your Questionnaire in 3/4 days, but you are welcome to deliver it to Langton House if you prefer or if you miss them.”

**1. Have you ever been affected by noise from engines on the new track? Yes/ No**

*This was a 75% response from the village with its 80 households* 37/ 23

**2. If so how often? Very occasionally, monthly, weekly, actual number.**

*22 or over 33% of respondents hear it regularly*      15                  9                  13

**3. What impact if any has this noise had on your enjoyment or activities?**

**None    Little    Considerable**

*25% of respondents are considerably affected*                                  7                  15                  15

**4. Have you recently been approached by the Mill or its employees/contractors about your opinion over this noise? Yes/No**

*One in 15 had been approached, 3 having employment connections* 4 / 56

**Comments:**

23 of those that were affected by the noise made comments. 8 were indicating that it was tolerable. One is however something of an expert on Noise and we might wish to discuss our situation with him. Most (15) found it irritating and very invasive. 4 found it clearly disturbing and distressing. The geographical distribution was very clearly affecting almost everyone at the top of the village and up the back of the hill. The Tanoy was clearly heard at the back of Southview Gardens and the edge of Buckby Lane, through the Rectory to the Heritage on Brington Lane. One resident on the far side of Brington lane along with all her neighbours does not hear it in her garden but heard it very distinctly while walking across Wadd Close field wrote 'my feeling was that I would be upset if I could hear that in my back garden'. It was obvious that known gardeners were amongst the most affected but many saw it as decided loss of country amenity in this 25%.

It is not heard very much in the center of the village. Here most people had some difficulty distinguishing it from the normal motorway hum. Certainly one day I took a walk through the village to deliver agendas and could not hear it until I came back to Southview where it was very audible. Weather/wind clearly is important, again I mentioned to Sarah Bennett how good it had been on the forth Saturday in July to be told it was very bad at the Rectory. Comments also make it clear there are other weekends than the 4<sup>th</sup> causing concern, often Wednesday afternoons for those still in the village, and most recently even a Friday afternoon.

A number of respondents indicated that the opportunity for local youth employment was a very positive feature for them, or that they used the facilities themselves and found them excellent. These comments still appear to come from the impression we wish to close down the Mill rather than reach some plan for amelioration of this particular nuisance with The Mill. They need to accept for a large % of respondents (25%) there is a present problem and for another 25% any increase would represent a real loss of amenity. Two respondents had mentioned this as a serious concern after checking out the wording of the Web site and receiving a copy of the Mill's high quality brochure at a recent event.

We would appear to have a more reasonable letter from the Mill sent as a reply to my response. It would seem right now to restart discussions and to clarify the position with the District Council. My thanks to Sarah Bennett and Ann Gilbert as well as Cllrs Lye and Bowers for making the survey return so unusually high.

The Parish Council following the presentation of this report asked the Clerk to pursue the two conclusions.



### **NEW PRIESTS FOR ST ANDREW'S, WHILTON**

On Sunday 11<sup>th</sup> August it was formally announced at the Family Service that the Revd. Christopher Goble is to become the new Rector of the Spencer Benefice. (Brington with Whilton and Norton, Church Brampton with Chapel Brampton, Harlestone and East Haddon with Holdenby).

Christopher aged 28 was ordained in 1998 in the Diocese of Worcester. Until accepting the living of our benefice he was Priest-in-Charge of St Clements with St David in Worcester and Chaplain to the City's University College.

On 27<sup>th</sup> September 2002 Christopher is marrying Sharon in Worcester Cathedral. Sharon is also an ordained priest and is to be the incumbent of Heyford, Flore, Stowe and Brockhall. They will be making their home at Heyford Rectory.

The Rectory at Brington is to be the administration centre for Christopher who will be instituted and inducted by the Bishop of Brixworth and the Archdeacon of Northampton on Friday, 8<sup>th</sup> November

at 7.30 pm at St Botolph's Church, Brampton. All are welcome at this special service.

Our new Rector will be conducting our Remembrance Day Service here in St Andrew's on 10<sup>th</sup> November at 6.00 pm. The Revd. Clive Cooper will be the guest preacher.

As we look forward to a new phase in the church life of St Andrew's, we pray that both Christopher and Sharon find their new ministries both friendly and rewarding.

Our Bishops have kept to their promise to fully staff the benefice by also finding a NSM (non-stipendiary minister).

The Revd, Derek Williams, Diocesan Communications Officer is to take up this appointment and is to be licensed in early December. Derek and his family will take up residence in the Rectory at Church Brampton.

Janet Bowers  
Churchwarden

### **ST ANDREW'S CHRISTMAS MARKET – SATURDAY 7<sup>TH</sup> DECEMBER AT 2.00 PM**

The Fund-Raising and Social Committee have decided to hold a Christmas Market this year in St Andrew's Church.

The stallholders will be in Christmas costume and the stalls will comprise of cakes, Christmas fare, handicrafts, Christmas mystery parcels, a 'nearly new' stall, Christmas cards, pottery and other attractions. Refreshments will be served and carols played on the organ will also add to the atmosphere.

Donations to the stalls will be much appreciated and nearer the date a list of stallholders will be distributed.

Profits to the church fund for providing a small kitchen area.

**SERVICES FOR ST ANDREW'S CHURCH WHILTON**

**OCTOBER 2002**

<b>6TH</b>	<b>9.30 AM</b>	<b>SHARED SUNG EUCHARIST AT <u>NORTON</u></b>
<b>13TH</b>	<b>11.00 AM</b>	<b>FAMILY SERVICE</b>
<b>20TH</b>	<b>6.00 PM</b>	<b>SUNG EUCHARIST</b>
<b>27TH</b>	<b>11.00 AM</b>	<b>FAMILY SERVICE</b>
<b>3<sup>RD</sup> NOV</b>	<b>10.00 AM</b>	<b>BENEFICE SUNG EUCHARIST - <u>BRINGTON</u></b>

**WHILTON PAROCHIAL CHURCH COUNCIL**

A meeting of the Parochial Church Council was held on Monday, 22<sup>nd</sup> July 2002, items of interest as follows:

**Kitchen & WC** - Plans of drainage and pipe installation have now been received and the Architect has invited three contractors to put forward a tender.

**Aerial Installation in Church Buildings** – Whilst previous interest had been shown by the PCC it has now been decided that it would be unwise to pursue in view of the public distrust of the safety aspect.

**Retirement of Priests** – At the Benefice Service held in Brington Church on 7<sup>th</sup> April 2002, a presentation was made to the Revd. David MacPherson & his wife Jean on their retirement. This was a cheque and a sundial for their new garden in Daventry.

A presentation for the retirement for the Revd. Maurice Walton and his wife Gill was made at the Benefice Service on 2<sup>nd</sup> June 2002 at Whilton. A £400 voucher for Haddonstone and a cheque was given to Maurice and Gill. Whilton Parishioners gave generously on both occasions.

**Treasurers Report** – There has been a definite move towards the use of the Gift Aid Envelope System for collections which allows us to claim 28p per every pound given, where the donor is a UK tax payer. We are still running a tight budget with the General Fund

**Fund-Raising** – The Cheese and Wine Evening raised £575.48 for the General Fund and Flower and Garden Festival £559 for the General fund and £558.84 for the Kitchen Fund. A Car Boot event was planned for 8<sup>th</sup> September for the Kitchen Fund.

**Disabilty Act Audit** – It was proposed that an audit should be carried out and Mr Brown has been authorized to arrange.

**Storage for Vestry** – The purchase of a filing cabinet for the vestry was authorized as the Treasurer, Secretary and Churchwarden's homes are currently overburdened with church paperwork.

**Next Meeting will be held on 28<sup>th</sup> October 2002.**

**DFB**



# WHILTON GARDENERS' ASSOCIATION



On the 5th August Whilton Gardeners' Association met in the village hall to listen to a talk by Maurice Billington entitled '**Gardening Up The Wall**'.

Whilst everyone is happy to plant in their garden borders, Maurice asked us all to consider planting climbers and wall shrubs. Pergolas, obelisks, trellis and walls are all useful supports for these types of plants giving height to your garden. He gave a selection of practical tips on what to plant where, what types of support and ties may be needed, as well as hints and advice on how to plant.

Part of his talk concentrated on suitable plants for all aspects, giving colour and interest throughout the year, which included wall shrubs (e.g. ceanothus), climbers (e.g. clematis and honeysuckle) and even fruit and vegetables (e.g. fan-trained pear trees and runner beans).

Maurice answered a number of questions from the attendees and was thanked by the Chairman for a thoroughly enjoyable talk.



## Coming Soon...



Our next meeting will be on **Monday 7th October at 7.30pm in Whilton Village Hall**. The speaker for the evening will be Mike Langley and he will be talking about '**The Cold Greenhouse**'.

New members are always welcome to attend, whether you are an expert or a complete novice – why not join in?

**Christine Phillips**  
Secretary





# WHILTON GARDENERS' ASSOCIATION



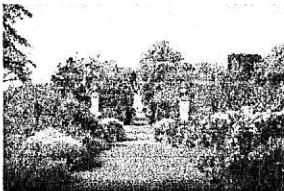
## Hidcote Manor Trip Report

Saturday 7<sup>th</sup> September saw a small group from the Whilton Gardeners' Association set off for Hidcote Manor in Gloucestershire. Hidcote is famous for its rare trees and shrubs, herbaceous borders and unusual plants from all over the world.



The 300 acre estate, comprising farmland, the Manor and the hamlet of Hidcote Bartrim, was purchased in 1907 by Gertrude Winthrop, an American widow and her son Major Lawrence Johnston.

Johnston began to create the garden from a ten acre field containing just a few trees. He divided the garden into a series of outdoor 'rooms' using hedges and walls. Each room was designed to have its own special and unique character.



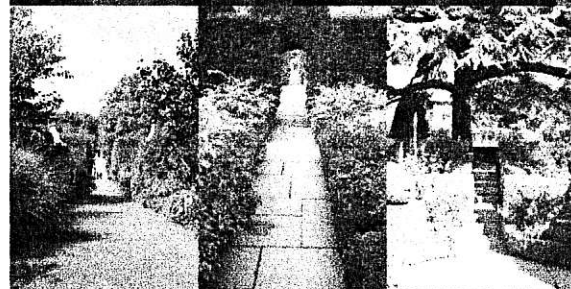
During the 1920's, Johnston travelled widely, taking part in many plant-hunting expeditions to China and South Africa. He carefully collected only the finest plants to bring back to his garden.

Lawrence Johnston presented the property to the National Trust in 1948. He retired soon after to Menton, where he died ten years later.

The Whilton group arrived at Hidcote shortly after 10.30 and after stopping for coffee made their way around the 28 garden 'rooms'. The 'Red Borders' with its use of purple foliage and flowers in vivid shades from crimson through to orange was a particular favourite.



At around 12.30 there was a break for lunch in the Garden Restaurant, followed by a walk around the remainder of the garden.



No trip would be complete without a visit to the shop and garden centre, at which point rain stopped play and the group set off back to Whilton after a thoroughly enjoyable day.



## Whilton Women's Institute

One delightful piece of news that was shared at the September meeting was that Anthea and Keith Hiscock have just become grandparents. Everyone joined in sending their best wishes to the whole family.

On to more serious matters and Ros brought up the subject of the forthcoming elections for committee members. With the exception of Trudy all committee members are due to stand down at October's AGM, having completed four consecutive years. It is a sad fact of life that whilst everyone is keen for organisations such as the WI to keep going, very few people are quite so keen to lend a hand a hand in running them. This reluctance is echoed throughout Whilton's organisations. Having served on several committees in the village I can honestly say that these roles are not terribly onerous and are generally enjoyable. It is certainly a fast track for newcomers to get to know the community (and to get to be known).

In a similar vein we are also always keen to welcome new members. Ours is a very small organisation, the meetings are always very friendly and not in the least "cliquey". To see for yourself, come along as a visitor to our meeting on Wednesday 13<sup>th</sup> November at 7.30 pm in the village hall..

If anyone still has any junk – I mean unwanted goods – left over following the car boot sale then read on. The WI is holding a table top sale in the village hall on Saturday 12<sup>th</sup> October from 10.30 until 12.00. Tables cost £5.00 and must be booked with Ros on 842324 by 5<sup>th</sup> October. There will be a cakes and produce stall and, of course, no WI event would be complete without our delicious refreshments. Proceeds from the event will be divided between Marie Curie Cancer Care and Whilton WI.

The evening's speaker, Graham Soden, gave a presentation entitled Wildlife - Four Counties. He is an extremely accomplished photographer and his slides mesmerised us as much for their clarity and quality as for their unusual content. This man knows his wildlife! Many of the specimens featured are found only in specific areas of the four counties covered. He readily admitted that in order to capture some of the shots he had to trespass onto railway tracks or pretend to have broken down at the side of busy dual carriageways (don't try this at home, children!)

As usual the evening ended with the raffle draw (won by yours truly) and a chat over tea with some extraordinarily chocolatey biscuits. Who could wish for a better way to end a very pleasant evening?

Teresa Leadbetter

Table Top Sale  
Whilton Village Hall  
Saturday 12<sup>th</sup> October 2002  
10.30 to 12.00



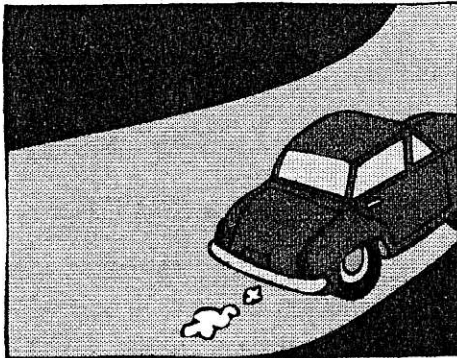
Cakes and Produce Stall  
Refreshments  
Bargains and Curios



Tables **must** be booked  
Cost £5 - book by 5<sup>th</sup> October  
Bookings and information call 842324

Proceeds to be shared between  
Marie Curie Cancer Care  
Whilton WI

### **EcoSalvage**



There is much publicity in the local press about abandoned and burned out cars and the lack of public funds to deal with the problem. It was therefore with interest that I read an article recently about a new organisation that aims to remove vehicles that would otherwise remain unrecovered.

EcoSalvage will liaise with police, local authorities and landowners in order to remove cars from generally inaccessible places using specialist equipment purchased through government grants or corporate sponsorship. Responsibility for the disposal will then be passed to the local authority. In order to gain the necessary sponsorship it needs to prove the extent of the problem. Dumped cars can be reported to EcoSalvage on 07764 600601 or by e-mail [info@ecosalvage.com](mailto:info@ecosalvage.com). They require precise details of the car's location or an OS reference. They have a website at [www.ecosalvage.com](http://www.ecosalvage.com).

Teresa Leadbetter



## **NEIGHBOURHOOD WATCH.**

Since my last report there has been further clarification of procedures for communicating with the police.

### **If you have information for the police.**

- (a) **Ring your Watch Co-ordinator.**
- (b) **If he is not there- between 8am-6pm Monday to Friday and 8pm-4pm Saturday and Sunday ring the Western Area Crime unit at Daventry on 01327 303196.**
- (c) **Outside these hours ring Police Headquarters on 01327 300 300 and ask for the Western Area Desk.**

### **For any crime in progress please telephone 999.**

As previously reported the police are advising by e-mail about crimes experienced in the area. In some watches they pass this information on to those who wish to be informed and I will do this for anyone who likes to register their e-mail address. It may be that you are only interested in certain types of crime e.g. telephone the Western Crime Area. This information covers



I regret to say that I shall be going into hospital on 23<sup>rd</sup> September and will not be available for some weeks to institute this service. In my absence Derek Brown (842968) has kindly agreed to deal with my duties.

Neighbourhood Watch information is published from time to time on the Parish Notice Board.

P.Waights, Co-ordinator (Tel.842431)

## **COPPER MILE UPDATE**

Hello again to all of our copper collecting readers. I hope you are all refreshed after the summer holidays and looking forward to the autumn. I know the nights are drawing in but the season of mists and mellow fruitfulness does have its own pleasures, weekend walks, vibrant colours, log fires and hopefully those bright autumn days. The copper mile has progressed since the last update and if we were to lay the coppers out starting at the top of the village at the main road, the line would stretch down as far as St Andrew's church. In terms of distance we are approaching the half-mile marker as well as nearing a £500 total raised. So a **big, big thank you** to everyone who has generously donated so far and a nudge of encouragement to anyone who hasn't scoured around for those spare coppers as yet. It would be marvellous if we could reach the half-mile point by Christmas, so please keep those copper donations rolling in. There will be a donation point at the Christmas market to be held in St Andrews in December so please bring along your spare coppers then or as always they can be handed in at any time to Janet Bowers, Gill Denbigh or left at the donation point in the church. Your donations are really appreciated so lets keep the mile rolling.

Gill Denbigh

# WHILTON VILLAGE HALL 200 CLUB

## JULY

1st Prize	080	T Price	£40
2nd Prize	060	T Leadbetter	£20
3rd Prize	190	B Williams	£10

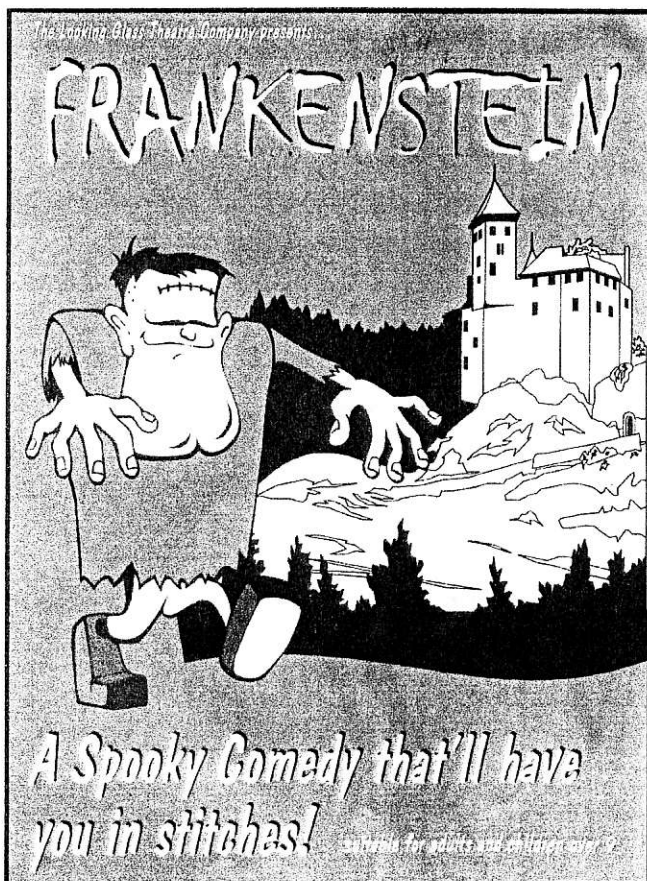
## AUGUST

1st Prize	025	N Swinford	£40
2nd Prize	109	G Martin	£20
3rd Prize	102	L Gow	£10

## SEPTEMBER

1st Prize	038	A Tilston	£40
2nd Prize	069	G Haynes	£20
3rd Prize	207	J Clements	£10

CONGRATULATIONS TO ALL THE WINNERS



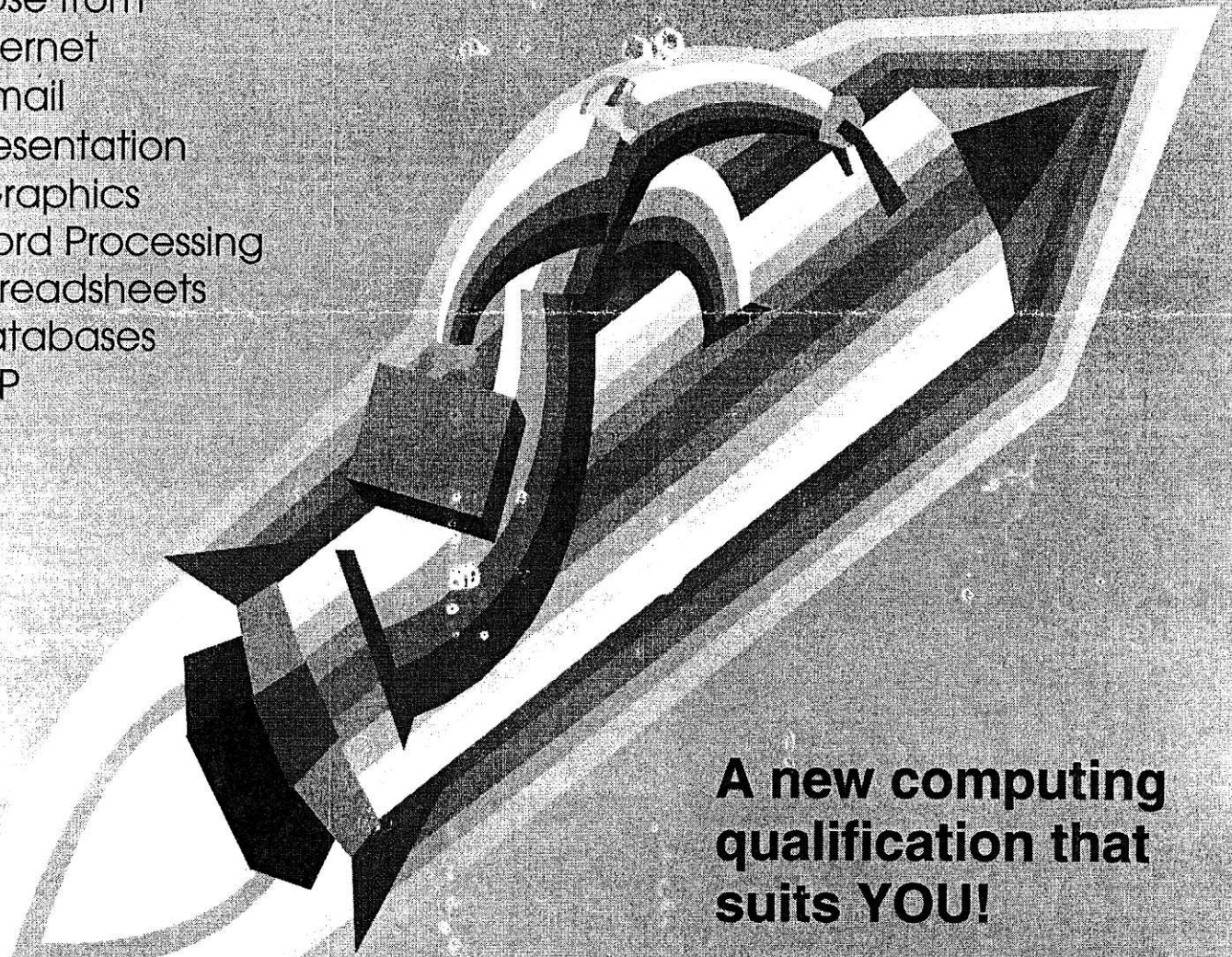
**TO BE HELD IN WHILTON  
VILLAGE HALL ON SATURDAY  
9<sup>TH</sup> NOVEMBER 2002 AT 7.30 PM**  
**TICKETS ADULTS - £5**  
**CHILDREN (SCHOOL AGE) - £3**  
Tickets available 1<sup>st</sup> November from  
Mike Lewis (01327 842404),  
Derek Brown (01327842968)  
Anthea Hiscock (01327 843319)

The Whilton  
Hall  
Management  
Committee  
have arranged  
this production  
following the  
success of  
"Sense and  
Sensibility" in  
March 2002  
It is advisable  
to purchase  
your tickets as  
soon as they  
become  
available

# e-Equals have Landed!

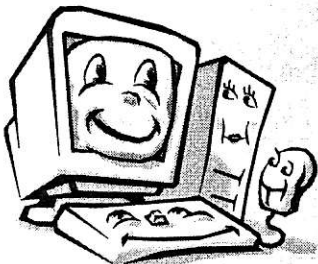
Choose from

- Internet
- E-mail
- Presentation Graphics
- Word Processing
- Spreadsheets
- Databases
- DTP



**A new computing qualification that suits YOU!**

- Do you want to learn to use a computer for **FREE**?
- Do you want to work at your own pace?
- Do you want the support of friendly tutors?
- Do you want to pick which modules you want to learn?
- Do you want to work towards a City & Guilds Certificate?
- Are you too busy to commit to a set time to study?



**Sign up for the NEW e-Equals courses NOW!**

Rugby College  
IT Learning Shop  
Long Buckby  
01327 843942

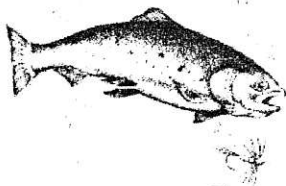
*Townley's*  
**Trout Farm**

*Home Farm, Whilton, Daventry*

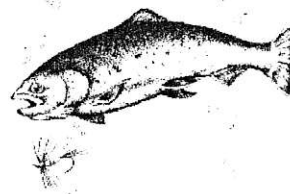
**Locally Farmed  
Rainbow Trout**

**— Organically Reared —**

**For Orders and Enquiries  
Phone or Fax**



*Isobel Townley*



**01327 842297**

**WHILTON FARMED BEEF ALSO AVAILABLE**

# BONFIRE NIGHT 2002

NOVEMBER 2<sup>ND</sup>

FANTASTIC FIREWORKS

BONFIRE

6.30 PM

'BODFISH'

(FIELD NEAR BRINGTON SCHOOL)

MULLED WINE & HOT DOGS

SPARKLERS FOR SALE

ADULTS £3.00 KIDS £2.00

FAMILY £10.00

EVERYONE WELCOME



## Summary of Events

Mon	7th	Oct	7.30 pm	WGA "The Cold Greenhouse" 7.30 pm in Village Hall
Tues	8th	Oct	9.10 am	Library van in village
Wed	9th	Oct	9.10 am	WI Meeting in Village Hall
Sat	12th	Oct	10.30 am	WI Table Top Sale
Tues	22nd	Oct	9.10 am	Library van in village
Sat	26 <sup>th</sup>	Oct	7.30 pm	Grand Auction for Scope in Village Hall
Mon	28 <sup>th</sup>	Oct	7.30 pm	Whilton PCC Meeting at Heritage
Sat	2 <sup>nd</sup>	Nov	6.30 pm	Bonfire night at 'Bodfish' field near Brington School
Mon	4 <sup>th</sup>	Nov	8.00pm	Parish Council Meeting
Tues	5 <sup>th</sup>	Nov	9.10 am	Library van in village
Fri	8th	Nov	7.30 pm	Induction of new priest at St Botolph's Church, Brampton.
Sat	9 <sup>th</sup>	Nov	7.30 pm	"Frankenstein" in village Hall by Looking Glass Theatre
Sun	10 <sup>th</sup>	Nov	6.00 pm	Remembrance Day Service in St Andrew's, Whilton.
Wed	13 <sup>th</sup>	Nov	7.30 pm	WI Meeting in village Hall "Cruising the Dutch Canals"
Tues	19 <sup>th</sup>	Nov	9.10 am	Library van in village
Weds	20 <sup>th</sup>	Nov		<b>Newsletter Deadline - Please hand in your contributions by this date or otherwise we cannot guarantee they will be included in the next edition</b>

---

The Whilton Newsletter is published bi-monthly and circulated free to every household within the Parish boundary. The costs are met by the Parish Council. The Editors are:

Derek & Shirley Brown - Cherry Orton, Main Street  
Sara Meadows - Courtyard Barns, Manor Lane

We are always pleased to receive additional contributions from people who do not normally have an input, especially children. Articles of local interest, poems, recipés, puzzles or drawings will always be considered for inclusion in the Newsletter.

*It would be most helpful to the Editors if regular contributors to the newsletter would consider submitting their article, if preparing on a PC, via a disk (saved to floppy disk A:drive) or by email ([saraspicer@lineone.net](mailto:saraspicer@lineone.net)) or ([shirdek@btopenworld.com](mailto:shirdek@btopenworld.com)) For those who do not have this facility please produce articles as they have done in the past.*

Any contributions to the newsletter  
by the deadline date, please. to any of the above Editors.