

WHILTON AUTUMN NEWSLETTER



RIPENING PEARS IN A WHILTON GARDEN

SEPTEMBER –
NOVEMBER
2015



AUTUMN 2015

LETTER FROM THE EDITORS

Jon Brierley...

Anthea Hiscock...

Sarah Thomas

Welcome to the autumn issue of Whilton Newsletter, which is also the first edition with two new members of the team. We are very pleased to welcome Jon Brierley and Sarah Thomas, and we look forward to the different experiences and ideas they will bring.

At present the Newsletter is delivered to every household in the parish and is available on the Whilton Village website: www.whilton-village.net. We would like the Newsletter to be more interactive and encourage villagers to contribute items for future editions.

On reading this issue any newcomer to Whilton could be excused for thinking the parish is obsessed with food and drink, from the social lunch and men's wine tasting, to the Gardeners Association buffet and the Spinney breakfast. Despite so many summer activities including refreshments there is no cause for worry; this aspect of Whilton life is not over! As our cover picture reminds us, there will be autumn fruits to harvest, and there are recipes included in this Newsletter.

As the evenings draw in there will be less opportunity to be out in our gardens, but perhaps more opportunity to sample some of the other parish activities.

The Editors

From the Clerk's Pen



As I'm writing this article for the autumn newsletter, the thought of saying goodbye to the long, warm and relatively dry summer is a very unwelcome thought. Thinking about saying goodbye brings another goodbye to mind, mine. I've enjoyed working for Whilton during the past three and a half years but, due to my current personal circumstances, I need to free up some time. I've encountered many new challenges whilst working for Whilton which were very rewarding, as I've learned a lot. One thing that has always impressed me about Whilton is the number of village organisations. Whatever your hobbies or interests, you will not be disappointed by what is on offer right on your doorstep.

The financial year-end is now well and truly a thing of the past as the external audit has also been completed. The external auditors BDO LLP, reported that there were no issues arising from the audit.

The signed off Annual Return can be viewed in the 'Library' section of the Parish Council's own website: <http://www.parish-council.com/whilton/>. It is a very basic but free and fully functional website that has been adapted for council use, to keep residents up to date with council activities and finances.

I would now like to introduce your new clerk, Sue Porter to you. Sue will join the council on 1st September. We have been extremely lucky in finding Sue to replace me, as she is a very experienced clerk. Sue also clerks for the parishes of Long Bucky and Staverton where she has, amongst the usual things, been involved in dealing with controversial developments and planning applications, a skill I hope you will never require! I am sure you join me in wishing Sue all the best in her new position. Sue will continue using the same e-mail address as the one I'm using which is clerk@whiltonpc.co.uk and her other contact details will be updated on the above website in September.

Last, but certainly not least, I would like to thank all the councillors for their support and the enthusiasm with which they've embraced the many changes that I've introduced - you are a credit to the community you serve. If I could single out one resident for a special word of thanks, a master linguist, it would be Gerry Heeley – you were a great sounding board.

Erica Fothergill, Parish Clerk

'It is with some sadness that we say goodbye to our Whilton Parish Clerk Mrs Erica Fothergill, she put us on the straight and narrow and made sure we stayed that way, we wish her every success and happiness for the future.

Whilton Chair & Parish Councillors'

CELEBRATING COURAGE



On 24th June an open meeting was attended by a good number of villagers, a representative from East Haddon and District Councillor Kevin Perry.

At this meeting it was agreed that in 2017 Whilton and East Haddon will celebrate the centenary of the winning of the Victoria Cross by Captain Henry Reynolds of Whilton, who also had links with East Haddon. The feeling of the meeting was that it is hoped this will be a double village event, with invitations to others who may be interested.

A great variety of suggestions were made, although not all will be practical or achievable. It was agreed that the various village societies and organisations may wish to be involved in some way. Their representatives were asked to talk with their members and report back as soon as possible, so that first proposals for a programme can be drawn up in September before the next open meeting.

There will be another open meeting at 7.30 p.m. in the Village Hall on Wednesday 30th September.

For further information or to make suggestions, please contact:

Anthea Hiscock: anthea.hiscock@tiscali.co.uk 843319

.....

Is sight loss making life difficult for you?

Then get in touch with us today as we are your local sight loss charity providing a range of services to help adults and children experiencing sight loss.

Why not use our countywide **Enable Service** which can help with friendly advice, information, practical assistance and equipment to reduce the impact of visual impairment for you, and your family or carers.

Arrange your free home visit today.

Drop-in to our **Sight Centres** in Kettering or Northampton for advice and support plus a wide range of aids and equipment. Alternatively visit our Mobile Sight Centre when it is in a town near you!

Northamptonshire Association for the Blind,

37 Harborough Road, Northampton, NN2 7BB.

01604 719193

NAB. Founded 1896 - Charity No. 201240



NEWS FROM ST ANDREWS

In August we held our Pet Blessing Service. The weather was good so we were able to hold the service in the church grounds. Those who came enjoyed a simple service and were refreshed by fizz and cake plus bones for the dogs.

Our next event will be Harvest Festival on Saturday 26 September at 7.00 in the Village Hall. We plan to follow the format which was so successful last year. A variety of hot food was prepared by volunteers and we had a very informal evening to celebrate harvest.

Harvest is one of those quintessentially English traditions which sadly appears to be at risk of dying out. We are very fortunate to live in a rural community which has a close link with the land. Although village residents are not as connected with farming as they may have been a hundred years ago, it is important to recognise our roots and celebrate. Gardeners in our midst enjoy the harvest of produce from their gardens or allotments. I do hope that you will support this event. Tickets cost £5 (no charge if you provide food to share at the buffet) and can be obtained by contacting me using the details at the foot of this note.

The recent theft of lead from the roof of the church in Brington highlights how vulnerable these buildings can be. There is one suggestion that a drone may have been used to survey the roof! We are currently exploring the installation of a security system to protect the roof here at St Andrews but in the meanwhile should you see any suspicious activity please inform the police immediately.

Finally I thought I would share some observations from Frederick Forsyth's column in the Express. "Academics have discovered that people who go to church are less depressed than those who do not. A simple faith staves off confusion and confusion is the godfather of stress which in turn is the scourge of the modern age. So if you are stressed out perhaps it might help to pop along to the building at the end of the road and have a good pray. If nothing else it is cheaper than pills or therapy". Makes you think!

We are always open to your new ideas and suggestions. I can be contacted on 843380 or by email Jbrierley1@aol.com.

Jon Brierley, 7 Langton Rise

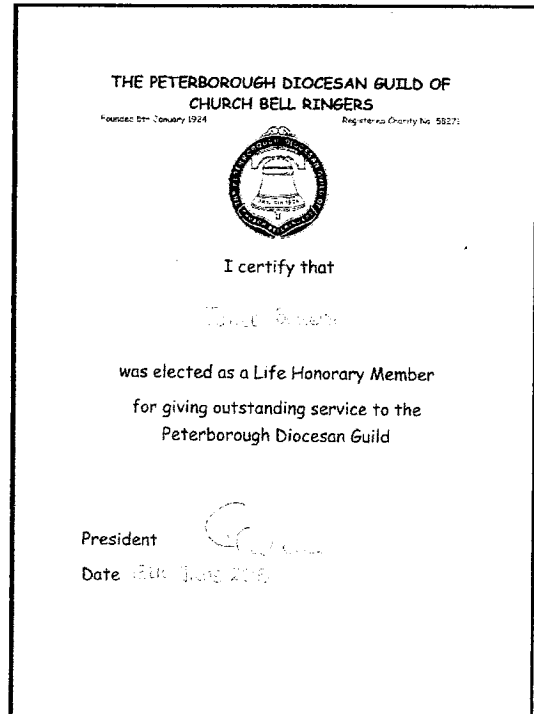
A SPECIAL AWARD

Congratulations to **Janet Bowers** of Brington Lane, who was granted a special honour this year. She has become a

Life Honorary Member of the Peterborough Diocesan Guild of Church Bell Ringers.

Janet joined the Guild in 1977 and so this year she celebrates 38 years of continuous membership. She rings at Great Brington and Whilton towers and was involved in the installation of the new ring of eight bells at Whilton in 1994, and the welcoming of Great Brington into the Daventry branch when the Benefice borders were altered.

The Peterborough Diocesan Guild has ten branches. One of these is the Daventry Branch, which has 24 church towers with ringable bells, including Whilton.



Janet's certificate

Janet served as a Branch Committee Member from 1983 -5 and then became Branch Secretary in 1986, keeping the post until 2014 when she had served for 28 years, besides being a member of the Guild Finance and General Purpose Committee and later representing them on the Guild Management Committee. As Secretary Janet had oversight of the branch monthly meetings and their advertisement in the Ringers magazine, and of the annual coach outings, many with a pre-booked lunch. Her meticulous planning gave rise to the famous catch phrase: "8.15 prompt start" on the itinerary.

Between 1987 and 2014 she organised 27 Branch dinners, in later years the Barby Sporting Club being a favourite venue, discovered by Janet. She also instigated the now much looked forward to Daventry Branch Carol Concert, at which each tower contributes a Christmas-related item, as part of the December Monthly Meeting.

Besides this she has been a member of the Ladies Guild of Church Bell Ringers and their secretary for 15 years, and was responsible for a number of their dinners too.

As a result of all this and the support of her fellow members, Janet has been granted this honour, and so we in Whilton congratulate her on this special achievement and acknowledgement of service.

Well done, Janet!

21 YEARS AGO

NEW BELLS AT WHILTON

This is the article by Bryan Williams, who lived in "Sira", recording the dedication of Whilton's new bells in 1994.

"On Thursday 29th September, the Feast of St Michael and All Angels, a large congregation gathered at the church for the dedication by the Lord Bishop of Peterborough of the new Whitechapel ring of eight bells. After a warm welcome to all the visitors by Canon Jim Richardson, the service continued with appropriate readings, hymns and prayers. During the hymn "Hark on high the joyful music, Hark the concert of the bells," the Bishop and Clergy processed to the west end of the church where they joined the ringers standing in the ringing circle.

The Tower Captain, John Townley, asked the Bishop to dedicate the new peal, which he did, asking God's blessing on the bells and the ringers, and dedicating them "In the faith of Jesus Christ, to the honour of St Andrew and for the service of God's people." The local band then rang rounds on the new peal and, as the procession returned to the chancel, the treble bell, dedicated to the memory of William Lucas Rose who gave the original ring of six in 1777, was rung for six whole pulls in their commemoration.

The Bishop, Dr William Westwood, in a lively address congratulated the church on the results of all the hard work, and took as his text inscriptions from bells cast by Henry Penn of Peterborough which summed up the part played by bells in the life of the church. On this occasion, Dr Westwood said, "Exultate Jubilate" was particularly appropriate.

After the service, Robin Rogers, the Guild Master, conducted the first touch on the bells and the band, who rang Stedman Trebles, included the other officers of the Guild and the Daventry Branch Ringing Master. All the other ringers present then had an opportunity to ring on the new peal, before moving to the village hall to enjoy good food, good wine and good conversation."



Canon Jim Richardson, Harold Haynes and Janet Bowers in 1994

POT LUCK WINE TASTING

Whilst the ladies were preparing for their Pot Luck Supper and sipping Pimms on the Patio with Agnes, nine of the other halves were at Phil Grant's for the inaugural Wine Tasting event.

This idea has been fermenting for some time – just get together for a social event and taste some wine. Everyone was invited to bring a favourite or interesting wine to share with the group.

There was quite a wide variety of wines to taste ranging from an Alsace Gewurztraminer, a New Zealand Sauvignon from Waitrose, a bottle of Fleur Fields locally grown in Pitsford, Montpierre Shiraz Rose from the Languedoc region, also Shed 10 from Australia, Faustino Grianzo 2011 Rioja, a Mcguigan Cabernet Shiraz from Australia and a Beaujolais.

Eight wines in total and I would like to tell you more about each – however despite the preparation of tasting notes, we never quite seemed to get to the point of writing things down!

So overall we enjoyed a very pleasant evening of chat and wine drinking and when we decanted from Phil's I think we were still in a slightly better state to get home than some of the ladies!

Definitely to be repeated when the Ladies hold their Pot Luck Supper and next time we shall pay more attention to the wine notes!

In the last article about the Pot Luck Supper they shared a recipe idea. Not all wine has to be imported and there are plenty of recipes to make use of the glut of fruit which is available at this time of year.

I thought I would share with you a recipe for Cassis. I tried it last year and the results were excellent. It makes a great base for cocktails including Kir Royale (mixed with champagne or sparkling) or Kir when mixed with a white wine. We had a good crop of blackcurrants again this year so there is another batch in production!

Cassis

Ingredients

1kg blackcurrants
750ml vodka
150ml water
300g sugar

Wash the blackcurrants and place in a large jar or demi-john. Pour the vodka over this and leave for five months.

Then put in a blender or mash and then strain to get a much juice out. Heat the water to dissolve the sugar and make a syrup. Cool this then stir it in to the mixture and then put it in to air tight bottles. That is all there is to it!!

Jon Brierley



WHILTON GARDENERS' ASSOCIATION



A note from Olive.

On 4th June Sally Cunningham gave us a talk entitled 'Plants For Their Place,' in which she gave suggestions for some of the more unusual plants that we might select to cope with the various micro-climates we encounter in our gardens. She illustrated her talk with various cuttings which she passed around. She also described some of the medicinal uses to which the plants were put in former times.

On the evening of 22nd July, a party of 21 members and one guest visited the National Trust Gardens at Canons Ashby, where we were given a very informative guided tour by the Head of Parks and Gardens, Chris Smith, and his assistant Nadine. Chris explained that they were trying to recreate the gardens as they were in the late Victorian era, using old plans and photographs. We rounded off a very enjoyable evening with refreshments in the tea rooms.

On 5th August over 30 members and guests attended our Whilton garden visits and buffet. This year we visited the gardens of Westcombe House, courtesy of Phil and Jo Grant; Langton House, courtesy of Anthea and Keith Hiscock; before making our way to the Little Rectory, courtesy of Adrian and Agnes Lee, where we enjoyed a lovely spread accompanied by a glass or two of wine. Many thanks to all who contributed to making the evening a great success.

This year we combined our 'Tubs and Hanging Baskets' competition with our 'Best Front of House Garden' into a single 'Best Front of House Display' competition. This was sponsored by Whilton Locks Garden Village, who judged the competition and provided the prizes. First prize went to Meadow House, with The Old Post Office coming a close second. Congratulations to both households.

Our next meeting will be on October 7th, when Colin Ward of Swines Meadow Farm Nursery, near Peterborough, will be talking about planting for shade and semi-shade and will be bringing some plants for sale.

Have a look at www.swinesmeadowfarmnursery.co.uk.

For further information contact Maurice Archer on 843081 or Roy Haynes on 844673.



Roughmoor Spinney

On Saturday 4th July we held an early morning walk in the Spinney, starting at 8.30 a.m. There had been rain over night, but this enhanced the spinney as the morning sunlight sparkled.

There was an opportunity to see the plant life, including the appearance of purple spotted orchids, which have not been seen here for a few years.

Members of the Spinney Management Group led the walk and moved on to the Village Hall, where a cooked breakfast had been prepared.



Purple spotted orchids

Later in the month there was a working party on Sunday 19th July, which concentrated on keeping the paths clear of overgrowth. The willing workers were then provided with tea and cakes in the Village Hall.

There are plans to lay more granite chippings along the marshy parts of the path this autumn. If you are able to help, by coming with a wheelbarrow and shovel, you will be very welcome. The times will be announced on the notice board and Whilton website.

We are looking for new volunteers to be involved in the Spinney, especially the able-bodied!

If you are interested in any way, please contact Anthea Hiscock, Roy Haynes, Maurice Clements or anyone else in the Management Group.



Roy Haynes with a fungus.

Whilton Warblers.

Whilton Warblers have continued to sing on Tuesday evenings in the church. The concert on Saturday 27th June was a great success with a full audience, and some of our members went to Hungary with Judit this summer.

The autumn term will begin in mid September and new members are always welcome.

WHILTON LOCAL HISTORY SOCIETY

OUTING TO TOWCESTER MUSEUM

On Friday 17th July the Local History Society had an outing to Towcester Museum, organised by Brian Melling, our treasurer and a volunteer at the museum. We were impressed by the quality of the museum, which has recently won an award, and by the welcome given by volunteers who attended our meeting.

Because Towcester was a Roman settlement (Lactodorum) and was on the Watling Street, now known as the A5, our visit concentrated on Roman times. We were given an interesting and amusing talk by which corrected many of our false assumptions about the Romans, their army and their roads. We learned that it was the army, not slaves, who built the roads, and that the modern route through Towcester is not the old Roman way. In fact the Roman road went straight through the site of the modern museum. With the fall of the empire, the settlement was abandoned and houses fell in over the old road, so that later buildings followed the new alignment we recognise today.

We saw a model of Roman Towcester, as it may have been; this small town was probably similar to the Roman settlement of Bannaventa in Whilton. Both would have been staging posts on the main road or "via publica". We heard that at these places there might have been a choice between staying in the very exclusive "mansio", or the friendly "tavern", or taking the dubious flea-ridden option of the cheap lodging house.

There were 300,000 miles of roads in the Roman empire, which helps to explain why they were so successful in governing most of the known western world for centuries.

The museum provides information and exhibits of other periods of history too, inspiring us to think about returning on another occasion.

The Local History Society will be meeting again on **11th September** to hear about Richard III, the last English king to die in battle, who was born in Northamptonshire and his body re-buried in Leicester Cathedral in March 2015. The following meeting will be on Friday **13th November** and will explore "the mystery of a Whilton stone". All are welcome to these meetings.

WHILTON LOCAL HISTORY SOCIETY

THE KING IN THE CAR PARK



A TALK BY RICHARD SMITH,

CHAIRMAN, LEICESTER RICHARD III SOCIETY

7.30 P.M. FRIDAY, 11TH SEPTEMBER 2015.

WHILTON VILLAGE HALL.

ALL ARE WELCOME

ENTRANCE £1.50

Whilton Local History Society

THE MYSTERY OF A WHILTON STONE

A new discovery

7.30 p.m. Friday 13th November 2015

Whilton Village Hall

All are welcome

Entrance £1.50

WHILTON VILLAGE HALL 200 CLUB 2015/16

APRIL 2015

1 ST PRIZE	S Thomas	029	£45
2 ND PRIZE	M Clements	207	£25

MAY 2015

1 ST PRIZE	J Baker	058	£45
2 ND PRIZE	J Brierley	163	£25

JUNE 2015

1 ST PRIZE	G Crook	054	£45
2 ND PRIZE	M Seth-Smith	096	£25

JULY 2015

1 ST PRIZE	J Gardner	104	£45
2 ND PRIZE	A Welch	055	£25

Congratulations to all the prize winners

SOCIAL EVENTS

Tuesday Chats in May and June were well attended and enjoyed, including the meeting near the 800th anniversary of the sealing of Magna Carta in June, when we ate cakes made with spelt flour, a very ancient species of wheat.

There will be Tuesday Chats on 15th September and 13th October at 2.30 pm in the village hall.

Please join us for tea, cakes and chat, you are very welcome.

There is a small charge of £1.50 to cover the rent.

The July Social Lunch



There was a summery feel to our meal as we met for a cold collation on a sunny day. Salmon, pea and asparagus quiche and broad bean and artichoke tart were accompanied by potato and rainbow salads.

As usual there was a problem choosing between the desserts – strawberry pavlova, plum and apricot crunch with custard and fresh fruit salad with ice cream - and for most this involved two or even three helpings! While tea, coffee and mints were served, the 200 Club draw took place.

The next Social Lunch will be on Tuesday 17th November. We can expect that the meal will be hot on this occasion.



TERESA'S APPLE CHUTNEY



Many of us in Whilton will now be harvesting cooking apples and wondering what to do with them all; here's one idea.

Some of you may remember the wonderful apple chutney that was served with the Harvest Suppers in the village hall. I managed to obtain the recipe some years ago from one of the ladies who produced a batch each year. Having now used this recipe many times I can thoroughly recommend both the straightforward method and the final result.

Ingredients (makes 5 – 6 lbs)

- 1 ½ lbs cooking apples
 - ½ lb small onions
 - ½ lb raisins
 - ½ lb sultanas
 - 1 lb sugar (I use soft dark brown)
 - 1 oz salt
 - 1 pint vinegar
 - 1 oz mustard seed
- Plus the following tied in a muslin bag:
- ½ packet pickling spice
 - 4 cloves
 - Small piece of peeled root ginger



Method

1. Mince apples, onions and raisins
2. Add the mustard seed
3. Add ½ pint of vinegar
4. Add the muslin bag of spices to the mixture
5. Boil until it's a brown pulp
6. Add the remaining ½ pint of vinegar
7. Add the sugar, salt and sultanas
8. Cook until dark brown

When cool seal in sterilised glass jars.

Best stored in a cool dark place for about three months before enjoying with cheese, cold meats, sausages, etc.

FAMILY NEWS

GOODBYE

This summer we have said goodbye to Peter and Margaret Webster, who came to Rose Briar 27 years ago. As Margaret remembers, Belinda was then in the 6th form at Champion School. William had already left school. Dorothy and Sam grew up here. The house was always full of kids. It was a great family home. Now, as Margaret says, it is ready for another family.

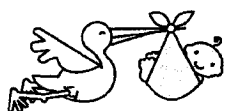
Today the next generation is far spread. William emigrated to Australia 22 years ago. Belinda spent 20 years in Australia before returning to teach at Exeter University. Dorothy lives in New Zealand and Sam is based near Banbury.

When the family first moved in there was a large old willow tree in the back garden. This died after a while, and when William left for Australia he gave Margaret a gum tree to replace it. The tree has flourished as a reminder of the family's connection with the Antipodes.

Whilton parishioners appreciate Margaret's quiet work for our community. For many years she collected for the Village Hall 200 Club, and for a long period she delivered most of the village Newsletters. As a result she came to meet many residents.

We send our best wishes to Margaret and Peter as they leave for a smaller property and a fresh start.

CONGRATULATIONS



We congratulate Helen and Jon Brierley on becoming grandparents, and welcome Zac, born in Birmingham on 10th August.

Congratulations too to the Thomas family at The Old Post Office. Mark's daughter Emily has gained a First Class Degree in Psychology at Lincoln University. She is going on to do a Masters Degree in Brain & Cognition at the Erasmus University in Rotterdam, The Netherlands.



Her twin brother Elliott gained a First Class Degree in Mathematics at John Moores University, Liverpool. Elliott has secured a Graduate Audit Trainee position with a Chartered Accountancy firm, initially based in Northampton.

(We are always pleased to include your news; just let us know. The Editors.)

In loving memory of Sasha

It is with a heavy heart that I tell all of you that on Friday 7th August we lost our beloved dog Sasha, due to a heart condition that we knew nothing about. It came as such a shock and it is still very upsetting to know that we will never see those puppy dog eyes look at us again. However, she has brought not just us but all of you, such joy over the 10 years that she was a member of our family.

The fact that we had to drive for 4 hours to a small village in Wales to see whether we wanted Sasha or not, gives you all some indication on how much she meant to us, before we had even laid eyes on her. I had always wanted a dog from a young age and Sasha ticked all the boxes, when she was described to us on the phone. Not only that but we discovered that she shared the same birthday as me. Fate played its part beautifully.

Sasha sat in my mum's lap for the whole journey. We had read stories on how difficult it is to drive long distances with a new dog, several toilet stops, the dog may be sick, it may go to the toilet unexpectedly and it will certainly need a drink. None of that happened, however, she was as good as gold and even drank water out of our hands.

The first night was strange for all of us. Trying to get Sasha to actually get into the bed we had brought her was challenging enough, leaving her was also hard but waking up at 2 in the morning to a strange howling noise for the first time was daunting.

We got used to it and fell into a nice pattern. Sasha was so small when we first got her that even our pet rabbit was bigger than her. She could not climb the stairs and she most certainly couldn't jump the small wall in our back garden. Her favourite toy when she was a puppy was a towel, which she used to pull and tug on.

As the years past, Sasha learnt where her place in the family was, right at the top. All she had to do was look at you with those wonderful puppy dog eyes and you would give her anything that she wanted. This is probably the reason that Sasha had to go on a diet.

On top of all of this, she was an unusual dog. She made friends with every postman or woman that came to our door, often wanting to see the person who put the letters through our door, in order to roll over and have her tummy scratched. She would get furious with anything that dared fly over her garden; birds, planes, hot air balloons, literally anything you can think of.

She would always play her version of fetch as well; we would throw the ball, Sasha would go and get it, run to us and then straight past us. We had to get the ball off of her first. Sasha would often make herself at home when going on walks, wanting to see people who she passed and if that meant following them into a house then Sasha would do it.

That was the joy of Sasha though; she was a wonderful dog that touched everyone's hearts. I know she will be missed in the village. It doesn't seem possible that you won't see her walking up and down Whilton again, or across the fields with my dad but I am sure she is running around in that big doggie heaven.

Rochelle

Great Days Out

As we have more leisure time now, we have been visiting a number of attractions locally and I thought it would be good to share some of these. Perhaps other villagers might like to let us have recommendations of places that they have visited either locally or further afield.

Blenheim Palace, Oxfordshire. Gifted to the Duke of Marlborough 300 years ago following his victory at the Battle of Blenheim you can visit the House, the Formal Gardens and also roam around 2000 acres of parkland landscaped by Capability Brown.

The house was also the birthplace of Winston Churchill, and there is an exhibition to commemorate the 50th anniversary of his death. We also took a guided tour of the very grand State Rooms which include magnificent tapestries depicting the victory at Blenheim and other campaigns.

For younger visitors there are Pleasure Gardens, including a maze and butterfly house, which can be reached on foot or by miniature train.

A really well presented House: an interesting day out and good opportunity for a picnic. You can also convert your day ticket in to an Annual Pass at no extra cost.

Bletchley Park. Home of the Codebreakers who played such a key role in World War 2. The House and Huts have recently been restored and give a very good feeling of what it must have been like to work here. The fact that the buildings still exist is a story in itself, having been rescued from property developers.

There is a Museum which features Enigma machines and a reconstructed Bombe machine. – despite the detailed demonstration I am still not sure exactly how they managed to crack the German codes!

A really interesting day out. Worth watching the movie The Imitation Game to give a feel of the place.

Canon's Ashby. The ancestral home of the Dryden family which was built from the remains of the Priory which was dissolved by Henry V111. There are extensive gardens that you can wander around and reflect the original designs. You can also visit the Priory Church – a fraction of the once extensive Priory but gives a glimpse of the lifestyle of the monks. Unfortunately on the day that we visited the house was closed so it is worth checking in advance but we found this to be an interesting short trip.

Kenilworth Castle, Warwickshire. The Castle was built over several centuries including substantial works for Elizabeth 1 by Robert Dudley Earl of Leicester. There is also an Elizabethan Garden recently restored and based on the original design.

Much of the Castle is in ruins and you do have to use your imagination but an enjoyable trip which is only a short drive from here.

AUTUMN EVENTS AT WHILTON LOCKS GARDEN VILLAGE

Wednesday 28th October, from 11am until 4pm.

Our Free 'Spooky Cuddle and Fun Day'

WLGV Famous Cuddle Day - meet the animals. Cute and Fluffy, Scaly or Scary - which are you?

Come along for "Trick or Treat" at Whilton Locks Garden Village.

Go to the main garden centre till to collect your clue sheet.

Fill in the clue sheet as you go.

When you have all the clues you can get your treat!

There's EXTRA treats for kids that dress up and spook the staff.

Face painting will be here too!!

Which Spooky critter are you?

REAL Ice Skating from 21st November

- Bigger than ever before – with REAL ice!
- Rink open every day from Saturday 21st November right through to Christmas and New Year (excluding Christmas and boxing Day).
- Skate hire is included in the price and parking is free.
- Skate Aids (polar bears) are available to hire separately.

The ice skating price structure is as follows:

Peak Times:

£7.50 for children (14 and under).

£10.00 for adults (15 +).

£3.00 Skate Aid

Each session will start on the hour and last 45 minutes. But we advise arriving early for boot change etc.

There will be 20% discount for groups of twenty or more when paid for in a single transaction.

Look out on the website for more details and booking options.

28th and 29th November : Frozen Weekend

Come and visit Elsa and Anna on.

How about some afternoon Tea with the ice sisters from 3 until 5pm.

Look out on the website for more details and booking options.

Whilton Locks Garden Village

01327 843 100

canalside@wlgv.co.uk

Info@wlgv.co.uk

AN APPEAL FROM BRINGTON

On the night of August 11th 2015 thieves stripped over half the roof of nearly 12 tonnes of lead from St Mary the Virgin with St John in Great Brington, Northamptonshire. We are appealing for help to restore the roof, which needs £40,000 of repairs.

Unfortunately, even though the church is insured, the loss and damage to the roof far exceeds sums the insurance company will cover. With autumn rapidly approaching the race is on to ensure that the roof can be replaced to ensure that further damage is not caused to this Grade 1 Listed Building and its contents, many of which are irreplaceable. To repair the roof and other damage we urgently need to raise £40,000.

The church also features a unique link to the British Royal Family as twenty generations of the Spencer family rest within the Spencer Chapel, including the 8th Earl Spencer, father of the present Earl, Charles Spencer and Diana, Princess of Wales. The Spencer family will be paying for the works related to their chapel; this appeal is for the main church area.

<http://www.crowdfunder.co.uk/historic-church-appeals-for-help-after-roof-theft/>

FARMING IN WHILTON

We all enjoy the privilege of living in a rural location but how many of us know much about the history of farming in the parish? The following notes have been summarised from the Parish Appraisal.

During the Second World War, the government encouraged farmers to increase production and large areas of land were ploughed up. Oats, barley, mangolds (not a typing mistake but a root crop like beet) and swedes were grown for livestock feed and flax, sugarbeet and potatoes were grown for selling on. More recently we see oilseed rape, barley, wheats and oats being grown in the local fields.

The first tractors were introduced in the 1930's but before then horse drawn binders and reapers and steam driven threshing machines would have been a familiar scene. As recently as the 1940's horses were used to work the land and there were significant numbers of cattle, sheep and poultry. Livestock are now mostly sheep, but readers may be interested to know that pigs were kept in large numbers in the village in the 1930s and 1940s. Most householders would keep one in the back garden to be salted down to provide food through the winter months.

Despite all this cultivation, ridge and furrow fields dating from medieval times can still be seen in the fields which have remained permanent pasture.

HISTORY OF THE POPPY APPEAL

As we commemorate another Remembrance Day in November, Teresa Leadbetter has provided this reminder of its origins.

How the Poppy Appeal began

Some of the bloodiest fighting of World War One took place in the Flanders and Picardy regions of Belgium and Northern France. The poppy was the only thing which grew in the aftermath of the complete devastation. John McCrae, a doctor serving there with the Canadian Armed Forces, deeply inspired and moved by what he saw, wrote these verses in 1915:

In Flanders' Fields

In Flanders' fields the poppies blow
Between the crosses, row on row,
That mark our place: and in the sky
The larks, still bravely singing, fly
Scarce heard amid the guns below.

We are the dead. Short days ago
We lived, felt dawn, saw sunset glow,
Loved and were loved, and now we lie
In Flanders' fields.

Take up our quarrel with the foe;
To you from failing hands we throw
The torch; be yours to hold it high,
If ye break faith with us who die
We shall not sleep, though poppies grow
In Flanders' Fields.

Why poppies?

On the eleventh hour of the eleventh day of the eleventh month in 1918, the First World War ended. Civilians wanted to remember the people who had given their lives for peace and freedom. An American War Secretary, Moina Michael, inspired by John McCrae's poem, began selling poppies to friends to raise money for the ex-Service community. And so the tradition began.

In 1922 Major George Howson MC, who served in the First World War, founded the Disabled Society. He recognised unemployed ex-Service men could make artificial poppies and approached the Legion. He founded a small factory, which was later to become The Royal British Legion Poppy Factory. The British Legion – now The Royal British Legion – was formed in 1921 from four separate ex-Service organisations. The first official Legion Poppy Day was held in Britain on 11 November 1921, and since then the Poppy Appeal has been a key annual event in the nation's calendar.

Family Quiz

Calling all young people living in, or visiting, the village of Whilton. Can you answer the questions below? You can ask a grown up to help you if you get stuck. Please post completed quizzes in 'The Old Post Office' letter box. There will be a prize for the top scoring family. The closing date is the 30th September.

Name of child(ren):	Address:
---------------------	----------

1. What do you call a male sheep? _____
2. What do you call a female sheep? _____
3. What do you call a young sheep? _____
4. Which country has the largest number of sheep in the world? _____
5. Can you name these famous sheep?!



_____	_____	_____
-------	-------	-------



_____	_____	_____
-------	-------	-------

6. What is another name for a Solanum Tuberosum? _____
7. What is another name for a Brassica Oleracea? _____
8. Can you rearrange the letters to reveal the name of a vegetable?

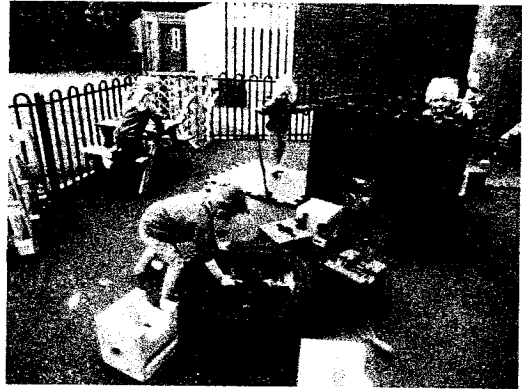
pagusaars	_____
gocteuret	_____

9. What do you call a person who places shoes on horses' hooves? _____
10. What is the name of the horse which won the Grand National in 2015? _____
11. Which breed of chicken grows to the largest size? _____
12. What is a pullet? _____



Brington and Whilton Pre-School

We have had a very busy and exciting time this last term of the year. We have visited Brington Primary School on Wednesday afternoons, joining with the Reception Class, playing with the children both inside and outside in the playground. It has been pleasing to see how the children who will be going to school have settled in. We hope transition will not be such a big step for them now as they will know where they are going and who is going to be their new teacher.



On Friday mornings we have once again been to Forest School. Here the children have enjoyed rolling down the hill in the long grass, playing hide and seek in the wood, making potions and lots of more exciting activities.

At the end of term we were sad to say bye bye to five of our children, but wish them all the very best as they start in their new schools.

Stop Press! As from the new term in September we are opening on Monday afternoons for the children over three years old. This means we are now open Monday morning for all children, Monday afternoon for the children over three, Wednesday morning for all children, Wednesday afternoon for children over three and Friday morning for all children.

We also have an exciting new website showing different aspects of the pre-school - for further information please see:
www.bringtonandwhiltonpreschool.org.uk

If you have child aged 2 years to rising 5 years who would benefit from attending a caring setting, please do not hesitate to contact Jenny Holman 01604 770083 or 07948724415 and book a visit to come and see us.

Places are limited; if you are thinking of sending your child please contact us as soon as possible.

The Whilton Newsletter is published quarterly and circulated free to every household within the parish boundary. The costs are met by the Parish Council.

The Editors are:

- **Anthea Hiscock, Langton House, Main Street.
Telephone: 01327 843319.
e-mail: anthea.hiscock@tiscali.co.uk**

- **Jon Brierley
e-mail: Jbrierley1@aol.com**

- **Sarah Thomas
e-mail: sarahlouthomas@icloud.com**

❖ **The Editors welcome material for the Newsletter. If possible, please send your contribution by e-mail. If you do not have a computer, the editors will be happy to type handwritten articles for you.**

❖ **The next issue will be the Winter Edition, covering December 2015–February 2016. The last date for contributions will be 20th November 2015.**

❖ **The Newsletter is published quarterly, but Whilton also has a website: www.whilton-village.net. This contains details of the organizations in the parish, previous Parish Council Minutes and Newsletters and a comprehensive Picture Gallery. It also has latest news and updates on parish events.**

❖ **If you would like to advertise your local business, flyers can be delivered to every household in the parish with the Newsletter at a small charge. For information please contact one of the editors.**

WHAT'S ON IN WHILTON

AUTUMN 2015

DAY	DATE	TIME	PLACE	EVENT
Sun	6 Sept	10 a.m.	Harlestone Church	Benefice Sung Eucharist
Fri	11 Sept	7.30 p.m.	Village Hall	Local History Society The king in the car park
Sun	13 Sept	6 p.m.	Church	Evening Communion
Tues	15 Sept	2.30 – 4 p.m.	Village Hall	Tuesday Chat
Sat	26 Sept	7 p.m.	Village Hall	Harvest Festival
Wed	30 Sept	7.30 p.m.	Village Hall	Open meeting: planning for VC celebrations 2017
Wed	7 Oct	7.30 p.m.	Village Hall	Gardeners Association Shade and semi-shade
Tues	13 Oct	2.30 – 4 p.m.	Village Hall	Tuesday Chat
Wed	28 Oct		Whilton Locks Garden Village	Spooky Cuddles Fun Day
Fri	13 Nov	7.30 p.m.	Village Hall	Local History Society The mystery of the Whilton stone
Tues	17 Nov	12.30 for 1 p.m.	Village Hall	Social Lunch
Fri	20 Nov			Last date for contributions for Winter Newsletter
	21 Nov		Whilton Locks Garden Village	Ice skating begins
	28-29 Nov		Whilton Locks Garden Village	Frozen weekend

Regular weekly events include:

BRINGTON AND WHILTON PRE-SCHOOL in the Village Hall:

Term time: Mon, Wed, Fri: 9.30 a.m. – 1 p.m. and Mon, Wed 1 – 3 p.m. for over 3's.

- **BELL RINGING** at the Church:

Mon: 7.30 p.m. - 9 p.m.

For further information please contact Justin Baker 844263 or Janet Bowers 842851

- **WHILTON WARBLERS CHOIR** in the Church:

Term time: 7.15 for 7.30 p.m.

- For details of **CHURCH SERVICES** in October and November, please see the notice board.