

WHILTON AUTUMN NEWSLETTER

SEPTEMBER – NOVEMBER 2018



WHILTON CHURCH FONT DECORATED FOR HARVEST FESTIVAL
IN THE LAST CENTURY

AUTUMN 2018

Letter from the Editors

It has been a fantastic summer. We enjoyed the record temperatures and the opportunity to sit and soak up the sun.

Those gardeners who were praying for rain may have slightly overdone it based upon the recent weather.

Whilton has been a busy village during this time. We started with the Barn Dance which was a great success and a really good social event, as can be seen below.



The good weather has given people the opportunity to socialise and try new things. The yoga group met in our garden in Langton Rise on two occasions and enjoyed their sessions in the great outdoors. The Warblers also held a very successful concert in the church.

With the schools returning and the nights getting shorter we now turn our attention to autumn and dare we say it Christmas! As ever there are a number of events and activities planned in the village and we hope that you will support these.

You will see later in this issue that we are asking for "Winter Morning" poems for our next edition, so whatever your talents and however old or young, we hope you will rise to this challenge.

The Editors

CURRENT NEWS AND ISSUES FROM YOUR WHILTON PARISH COUNCIL.

- **The Spinney Management Group (SMG).**
The Roughmoor Spinney in Whilton Village has been open to the public since 2000, and has been developed, maintained and managed by a Spinney Management Group of volunteers from the Parish. However, the group now urgently require a new Chair and Secretary in order to keep it running. Full details are included later on in this Newsletter. The Group meet around 4 times a year, and co-ordinate efforts to maintain the Spinney for all to use.

- **Whilton and Whilton Locks E-Mail Distribution List.**
The Parish e-mail distribution list continues to grow apace, with more and more people asking to be included so that they can be kept informed of the latest issues and information concerning the Parish. If you are interested in being added to the list for the Parish, please send your e-mail address to clerk@whiltonpc.co.uk.

- **Broadband.** It looks like we are finally seeing a light at the end of the tunnel to get faster broadband into the Parish.
 - **Northamptonshire Superfast Broadband Project.** Part of the government's initiative to roll out Superfast Broadband to rural areas. Their website with the latest details is here: www.superfastnorthamptonshire.net which will give the latest news on the venture. The chosen supplier is Gigaclear and the website is quoting that both Whilton and Whilton Locks are planned to go live in Q4 2018.

 - **Gigaclear.** Gigaclear will be coming to the Parish and provide superfast broadband to the community. The plan is that they will install a fibre network through the Parish, and each resident can then opt to be connected directly to that network (fibre to the home) to provide a much faster broadband speed. They provide a variety of packages and speeds of 50Mbps up to 1000Mbps. Full details are at www.gigaclear.com. We have just been notified that work will now begin in the Norton cabinet for Gigaclear, which will feed Whilton Locks, and work should begin shortly in the Little Brington cabinet, which will feed Whilton village. The website will be updated in September 2018, so keep an eye out for the latest details.

 - **Other Broadband Options Being Considered.**
 - **BT.** We are continuing our efforts to try to have a BT fibre enabled cabinet installed on the green in Whilton, which will hopefully provide an alternative to Gigaclear. We have already provided a small list of addresses and speeds to BT to consider.

However, this is a low priority for BT since we are seen as already being connected to a fibre broadband network (albeit only to the exchange in Long Buckby), and hence satisfy their, and the Government's initiative to have everyone connected to fibre broadband. That all said, if enough interest is gathered from the Parish by BT, it will push the initiative towards the top of their list. Hence, anyone in the Parish interested should register their details on their website here:

www.communityfibre.openreach.co.uk/northamptonshire

- **Good Neighbour Scheme.**
Northamptonshire ACRE (Action with Communities in Rural England) is working with Daventry District Council to develop Good Neighbours schemes across Daventry District, including the Whilton Parish. The schemes will offer practical help to older people, whether it's collecting a pension or a repeat prescription, walking the dog, getting a lift to the shops, or just changing a light bulb. Funding of up to £1,000 is available to groups wishing to set up Good Neighbour Schemes to help elderly, vulnerable and isolated people in our communities. If anyone is interested in setting up such a group, you can contact Daventry District Council on 01327 871100 or Northamptonshire ACRE on 01604 765888.
- **Daventry Area Community Transport (DACT) Service.**
A DACT bus service runs from Norton to Northampton, and is available to Parishioners who need to travel for medical appointments etc at cost. However, the contract with the last operator has ended, and the Northamptonshire County Council have been trying to find an alternative operator for the service, with no success. To try to keep the service running on a self-help basis, the Chair of the Whilton Parish Council will apply for grant funding from the Daventry District Council for the service to continue to support the villages of Whilton, Brington and Norton.
- **Community Speedwatch.**
The Speedwatch programme of activities continues through Whilton village to try to reduce traffic speeds to 20mph. The village will soon be seeing the next drive with the positioning of a number of '20 is Plenty' signs along Main Street to try to get drivers to reduce speed through the village.
- **Defibrillators.**
You will have hopefully noticed that the Parish Council have successfully installed 2 defibrillators in the Parish - in Whilton (by the Village Hall) and Whilton Locks (next to the BT phone box on the canal bridge). Each cabinet is locked with a code, which can be obtained from the emergency services when you dial 999. The Council have also distributed an 'aide memoir' card to each home in the Parish to provide details of the defibrillators, and what to do when, and if required.

- **Whilton Parish Council Website.**

The Whilton Parish Council also do have a website at:

<http://www.parish-council.com/whilton/> which details all the work that they are doing for the community, together with any notices of interest for the Parish. There are also details of who your councillors are, and how to contact them about any matters relating to the Parish.

The e-mail address is: councillors@whiltonpc.co.uk.

The Council also holds a regular meeting in the Whilton Village Hall every 2 months, which is open to the public to attend and raise any issues.

Randal Smith
Rose Briar
Chair of the Whilton Parish Council

.....

WHILTON IN NEED CHARITIES

Parishioners are reminded that the Parish has this Charity available to help in a time of need.

We have some £4500 available invested in Charity Bonds. The three trustees recognize there are any number of unforeseen difficult moments for which a grant, now raised to £400, could be a godsend. We are aware student debt, minimum wages, reductions in incapacity benefits, small pensions, and diminishing savings can leave some people worried over unexpected crises, or even regular vital commitments.

More details are available on each noticeboard, but each trustee is very willing to speak with you about your own, or another resident's difficulties, without names if wished, to clarify whether we can help.

The Charity remains available for additional contributions and is registered for Gift Aid. We recently received a HMRC refund of £78 for such a gift.

The Trustees:

- **The Rector: Ven. David Painter: (01604 770402)**
- **Ann Gilbert (843169)**
- **Keith Hiscock (843319) or kemhiscock@tiscali.co.uk**

BOOKS WANTED

We plan to open a book stall in the Church porch to recycle recent fiction. If you have books in good condition (small quantities initially) please bring these to 7 Langton Rise. All proceeds to Church funds.



ROUGHMOOR SPINNEY – THE END OF AN ERA?

(This article was first published in December 2016)

In 1997 Roughmoor Spinney was given to Whilton Parish as a Millennium Gift by Griff and Joan Davies of Roughmoor Grounds. The Spinney has been open to the public since 2000, and has been developed, maintained and managed by a Management Group of volunteers from the parish.

However, after 20 years there is an **immediate need** for new blood and for people willing to take on the responsibilities of **Chair and Secretary**. It will no longer be possible for the group to function legally without these offices being filled. The group has a Treasurer, but he will resign now if no one comes forward for these tasks.

An early bonfire as volunteers cut paths through the Spinney and cleared the wood after the felling of the hybrid poplars which had overshadowed it.

Volunteers working here are: Richard Bunce, Derek Coates and Jeremy James.



The Spinney stream in full flood in the winter of 2012/13

The Spinney remains an asset to the parish, with its wet woodland, flowers, animals and birds. It is used by walkers and nature lovers, and especially by the Pre-School, who have regular activities there. It is a place for a quiet walk, yet very near the centre of Whilton. It has been the venue for activities varying from quizzes to treasure hunts and guided walks.

Over the years there have been a number of work parties to plant, prune and tidy, clear ditches and especially to make the paths firmer and safer for all. There are now very few, if any, who turn up for these activities, or are willing to arrange them. Without management the Spinney will no longer be safe for the use of parishioners.

If you are interested in this and can help please contact **Richard Bunce** (Treasurer): Hill End, Manor Lane, or **Janet Bowers** (Acting Chair) 842851 or janbowers22@gmail.com.

If no one comes forward, the remaining members of the Management Group will hand the Spinney to the Parish Council. The Councillors will then have to decide how they will proceed, but without active management the Spinney will have to be closed to the public, apart from the short public footpath between the two bridges.

This is a sad and disappointing outcome for those who have worked for the Spinney for so many years. It may also be a reflection on the changing lifestyle and expectations of the residents of Whilton village. There is no doubt that the Parish Council will work towards the best interests of Whilton community and we can hope that they may find a positive solution, rather than closing this small wet woodland to local people.

THE SOLUTION IS IN YOUR HANDS.



DACT have established an exciting annual programme of varied day trips, for people of **all ages**. After listening to customers suggestions, we have planned a series of trips to suit almost everyone!

There are mystery tours, pub lunches, trips to the seaside, historical buildings, museums, gardens, shopping trips and much more. They are an ideal way of getting out and about, to make new friends, renew old acquaintances and see interesting places.

The trips are extremely good value for money.

We are sure you will find something of interest in our current brochure, available at: dact.btck.co.uk/DACTDaysOut

You can register for **FREE** for the DACT 'Days-Out' Scheme, by simply calling us on **01327 701665**. You will be asked for your full name, address and date of birth. If you have any kind of mobility difficulties which you think we should be advised of, please notify us. e.g. you perhaps need to bring a tri-walker, trolley or a travel scooter on a trip.

A VILLAGE WEDDING

Congratulations to Jessica and Shane Walker, who were married at St Andrew's Church, Whilton, on Saturday 18th August. Jessica is the daughter of Ray and Sarah Hawkins of South View.

The wedding service was conducted by the rector, the Venerable David Painter, and was accompanied by the singing of Whilton Warblers, who filled the choir stalls. The bride's mother, Sarah, sang with the choir, of which she is a member, and the couple's little son Harry attended the ceremony on a glorious summer day.

We wish them a long and happy marriage.



This "Autumn Morning"
poem by
Northamptonshire poet
John Clare is a word
picture of this time of
year, with a surprisingly
modern feel about it,
although describing a
countryside of the past.
Clare died in 1864.

*The autumn morning waked by many a gun
Throws o'er the fields her many-coloured light
Wood wildly touched close-tanned and stubbles dun
A motley paradise for earth's delight
Clouds ripple as the darkness breaks to light
And clover fields are hid with silver mist
One shower of cobwebs o'er the surface spread
And threads of silk in strange disorder twist
Round every leaf and blossom's bottly head.
Hares in the drowning herbage scarcely steal
But on the battered pathway squats abed
And by the cart-rut nips her morning meal
Look where we may the scene is strange and new
And every object wears a changing hue*

We challenge our readers to produce a "**Winter Morning**" poem to include in our next edition – funny, clever, moving, mysterious, long or short.....



NEWS FROM ST ANDREWS

It has been a busy period for us. Following completion of some minor repairs to the roof we then had a long period when it did not rain so we were unable to test the work! At the same time we completed some work in the churchyard and some of you may have noted that the dead tree is no longer there. Roy has kept on top of the grass and Helen has been busy watering and weeding the corner flower bed.

A big thank you to the Barn Dance Organising Committee who donated £845 from their event

We held a Christening Service for the Davies Family, hosted a renewal of wedding vows for a couple who were unable to use Norton Church (of which more later) and then the wedding of Shane Walker and Jessica Hawkins.

We will be hosting the Benefice Service at 11.00 on 7 October. Our next service after that will be a Harvest Celebration on 14 October. We will move the time of this service to 4.00 and serve tea and cakes in the church afterwards. On 11 November the country will be marking the 100th Anniversary of the end of the First World War and we plan to hold an event to commemorate this. More details will be published nearer the time.

Our Christmas plans are not yet finalised but we intend to repeat the successful Christmas Tree Festival and will be holding our Carol Service on 16 December.

Our normal pattern of services is a Worship for All on the second Sunday of the month at 11.00 and a Eucharist at 6.00 on the fourth. Sadly attendance at the Worship for All Service is quite low and the PCC has debated whether this should be continued. We will keep it in the calendar for now but it remains under review so we hope that villagers will support this service as frankly it will be dropped if attendances do not improve.

Now with reference to my earlier remarks about Norton Church. Unfortunately they suffered from the theft of metal from the roof which has caused damage. The building is no longer watertight, currently is not fit to hold services and its future as an active church is now in doubt. The thieves were able to work undisturbed for two nights before the theft was reported, despite the fact that the church is in the centre of the village! We must remain alert to the continued threat posed by metal thieves to our own church building and ask that you remain vigilant and report anything suspicious to the police.

Linda and I are always open to suggestions about future services, events and how we can help the community.

Jon Brierley, 7 Langton Rise 843380 or by email Jbrierley1@aol.com.
Linda Treacy 07752 885900 or by email lindahalltreacy@gmail.com



WHILTON GARDENERS' ASSOCIATION



At our June meeting, Teresa Wedderburn from Stony Stratford, gave us a talk entitled 'Flowers for Health and Wellbeing'. Teresa explained how she helps to run a Community Interest Company called Branch-out MK, which uses gardening as a therapy for people with learning difficulties, helping them to improve their social and practical skills. Participants have helped to create a garden where they learn how to grow cut flowers for sale. They have also started producing cut and dried flower products, including pot pourris and herbal teas. Teresa had brought a selection of these along for sale.

We enjoyed a fine evening for our Whilton garden visits and buffet on August 1st with 26 members and one guest joining in. We visited Nick and Jane Busby's garden in Buckby Lane, followed by Nick and Danuta Jackson's garden at The Old Plough and finally Lynn and Maurice Archer's garden in Manor Lane before making our way to the village hall to enjoy a splendid buffet. Thanks to all who helped to make the evening a success.

At our next meeting on October 3rd, Craig Rudman, Head Gardener at Cottesbrooke Hall, will be giving us a talk about his work in the gardens there. The meeting starts at 7.30 in the village hall and non-members are welcome for a £3 guest fee.

Our annual membership costs £15 per person. If anyone would like to join WGA please get in touch with our membership secretary, Maurice Archer, on 01327 843081, or the chairman Roy Haynes on 07879861673, email royandtricia@btinternet.com

LOOKING FORWARD TO WINTER



This year the Ice Rink at Whilton Locks Garden Village will open from Saturday 17th November.

Aperture Photography Group



The Aperture Photography Group was formed in 2016 and we now have nearly 40 members with various levels of knowledge and experience. The Group offers a range of activities, including regular meetings, training workshops and outings.

If you have a camera and would like to learn how to use it, or if you are a more experienced photographer and would like to share your interest with others, please get in touch.

Meetings are held in the back room at the Saracen's Head in Little Brington at 8pm. The dates of our forthcoming meetings are:

September 13th and 27th
October 11th and 25th
November 8th and 22nd
December 6th and 12th

For more information, contact Neil Phillips on 01327 844182 or via email - neil.apg@gmail.com

Before you try photographing any event, spend a little time thinking about where you need to stand, what you are likely to see and what types of photos you want to take. This will ensure you come back with a set of images that fully describe the what happened.

Members of the Aperture Photography Group recently went to Coventry town centre to photograph the DVDF Women's Cycling Tour. We had worked out that this was the best place to see the race as the competitors came through the town centre twice - the first time was part way through the race and the second time was at the end of the race! Then it was a matter of where to stand to ensure you could capture all of the action - we decided this was in the Market Square, just close to the finishing line with a clear view of the cyclists as they came into the town centre.

Once we were in a position with a good view of the action, it was then important to take photos that told the story of the event. This meant that we needed to capture the competitors, the crowd, event staff, support teams and the winners' prize giving. You have to be observant throughout an event and have your camera/telescope set up to capture everything, including those unexpected moments that are often the most special.

Since the cycle race we have also photographed a polo tournament, the rehearsal for a production of Hamlet and we are currently shooting images for a new exhibition of our work in The Saracen's Head in Little Brington, which we hope to complete in September. We hope you will drop in and see these new images.

If you fancy getting out and taking more photographs, you will find lots of advice on our website:

www.aperturephotographygroup.co.uk

LOCAL HISTORY SOCIETY OUTING

Saturday 23rd June marked the outing of the Whilton Local History Society. We travelled to Grafton Regis to attend "1000 years in 100 minutes".

Starting from the village hall, once their school, we followed the history of their village through 1000 years. As we moved from Village Hall to Church and back we encountered a variety of characters, some of whom were easily recognised. Grafton Regis has a number of associations with royalty, as there was once a royal palace there. It was destroyed in the Civil War, but was familiar to Henry VIII and later monarchs, although Queen Elizabeth I did not like it and complained about the lack of pure cold water to drink.

Figures from history were in full magnificent costume and told us of their experiences. We had an opportunity to look round the old parish church and to see monuments to the Woodville family. We met Elizabeth Woodville of Grafton Regis who married King Edward IV. Henry VIII introduced us to Ann Boleyn, and no one was very willing to leave their child in the care of Richard III! There were also less well-known characters including a French abbot (shown here) and a local vicar's wife, who taught poor girls how to make lace.



The afternoon was rounded off by tea and cakes in Grafton Regis Village Hall. The variety and number of cakes was abundant enough for royalty, and the teapots were replenished as required.

The next meetings of the Local History Society will be at 7.30 p.m. in the Village Hall as follows:

Friday 14th September
Northamptonshire Airfields of the Second World War
Speaker: Juris Trede

Friday 16th November
The Women's Land Army in Northamptonshire in the First World War
Speaker: Helen Frost

These meetings are free to members, but all are welcome,
with a charge of £3 for visitors.

A WHILTON AWARD

Northamptonshire Heritage Awards held at Althorp

On Thursday evening 6th July the Northamptonshire Heritage Forum held their tenth annual awards ceremony. This year we were the guests of our Patron Earl Spencer and the presenter by for the evening was John Griff of BBC Radio Northampton.. Althorp House looked magnificent in the golden evening sunlight, and provided the perfect backdrop for the gathering of the supporters of Northamptonshire's heritage.

A panel of heritage specialists judged the entries and chose a winner for each of the eight categories.

This year the judges were Neville Stankley, Senior Lecturer at Nottingham Trent University, Dr Caroline Nielsen, Senior Lecturer in History at Northampton University, Jannette Warrener, Lincolnshire Heritage Forum Ambassador, and Dr Paul Jackson, Senior Lecturer in History at Northampton University.



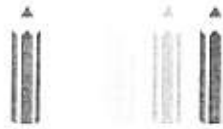
Anthea and Nick in back row with Earl Spencer in centre.

Whilton Local History Society is a member of this organisation and we had entered Whilton's project based on Captain Henry Reynolds VC,MC, for the Community Award. Nick Busby and I attended to represent Whilton and returned with a plaque recording that we have won the 2018 Community Award for the "Celebrating Courage" events last year. Congratulations to everyone who contributed to this great community effort.



We hope the plaque will soon be up on the Village Hall wall for all to see.

Anthea Hiscock



Brington and Whilton Pre-School

Whilton Village Hall NN11 2NN

www.bringtonandwhiltonpreschool.org.uk

Another school year has quickly disappeared and by the time you are reading this we will be finished for the summer holidays. We completed the term with our Sports Day on Brington Playing Field, where we said goodbye to 12 of our children who will be starting school and we wish them all the very best as the start 'big' school.

During this term we have had a great time learning more about our pets, having had a visit from a dog, horse and guinea pigs. We also visited Whilton Locks Garden Centre who have lots of birds, reptiles, fish and rabbits, ending the afternoon there feeding the fish. We have been Brington Primary School to help with the transition of those children going to school. We had a great time



playing with Class

1, who welcomed us and treated us to a Teddy Bear's Picnic on our last day. We have also been up the allotment picking strawberries, herbs and onions, which we made Onion Soup for our snack - this was tried with very mixed reactions. The Spinney has also been used lots this year as the weather has been great and it is alot cooler down there amongst the trees, we have built dens, played hide and seek, made



mud pies and lots more exciting activities.

In September the pre-school year will start with a new manager, Michaela has been appointed to replace Jenny who has been manager for the last 18 years. Michaela is excited to get started and has lots of ideas to take the pre-school into a new season. We wish her well in her new position and together with Hayley and Trish our existing staff, we look forward to continue hearing what our children get up to.

We still have places left for September and if you think your child would enjoy a caring pre-school which has lots of experiences outdoors please contact us. We meet at Whilton Village Hall and are able to take children from 2 years upwards. Please get in touch with Michaela on 07546440572 or email through our website, so we can arrange a visit and chat. For more information see our website or visit us on facebook.

A NOTE FROM JENNY HOLMAN.

On a personal note, I would just like to thank all those who have supported me and the pre-school for the last 18+ years. Initially I was involved in the pre-school when my own children attended, I was encouraged to be on the parent committee and helped with fundraising and often helped out in setting when needed. When my own children started school the pre-school were short staffed and I was asked if I wanted a job, which I accepted and started work in January 2000. I remember it was a huge learning curve as I had only just started when Ofsted turned up to inspect us, they questioned me and I felt totally out of my depth as I was a complete novice and had no official training. This spurred me on to get trained and I started on my journey of learning about early years development, only to be told at Easter 2000 that the manager was leaving and would I step up as manager. A huge challenge but one I accepted and very pleased that I did. So alongside completing my Early Childhood Studies Degree, I managed the group with some very able staff and parent committees supporting me, I could not have done it without them.

It has been so lovely to have had the chance to be part of so many children's first experience of education, to support, nurture and encourage them through to school age, then to see them move onto school confident and ready to learn. Children are a delight to work with, they say it as it is, no messing. They would talk about their home life, much to parent's embarrassment at times, discuss with each other what they would be when they grow up, sometimes child's talents were quite obvious at such an early age, some showed signs of being a great actor (we are looking out for their name in lights), some showed signs of being artistic and others mathematicians, each child was unique and that made it exciting.

Times and language have changed though, I remember in my early days talking about a making a mobile at circle time, I was meaning the mobiles that you hang from the ceiling, a child spoke up and said 'you can't hang a mobile from the ceiling' he was talking about a mobile phone! We had a laugh and remembered to check ourselves after this for changes in our language.

Working in a small community you get to know lots of people, local villagers who have helped us, to name a few, but there are lots of others. Mary and Gordon for their years of kindness at allowing us to visit their lambs, Maurice who is always on hand to help out maintaining the hall when needed, Brington Primary School for allowing us to visit to give the children a taste of big school before they attend. It has been a pleasure to visit the school to see the children who attended pre-school growing up, but still fondly remembering their pre-school days.

It was lovely to see so many youngsters and parents at my recent surprise tea party (despite the England football team playing). All the staff I had worked with over the years were there and many children that had been through the pre-school and now were either at school or finished school! It was a huge surprise and thank you to all who arranged this.

I have been so, so fortunate to have managed the pre-school for the community for so long, I have so many treasured memories that will be with me forever. The Pre-school is a great asset to have in such a small community; long may it continue and be used by the families in the villages.

Jenny Holman

Jenny has now retired from managing the Pre-School. We thank her for her long commitment and leadership in Whilton, and we are happy to welcome Michaela Mullen as the new Manager of Brington and Whilton Pre-School.

EARLY EDUCATION IN WHILTON

It is a coincidence that the change in management of the Pre-School comes exactly 250 years after the foundation document for Whilton School, which is now the Village Hall where the Pre-School meets.

The money for the foundation of the school was left by farmer Jonathan Emery, whose will was proved on 12th November 1768. Jonathan was a bachelor and had no children and was blind when he made his will on 7th October. Because he could not see, he made his mark on the will, but there is no suggestion that he could not read or write in his younger days. Jonathan's will was: "attested and subscribed in his presence and in the presence of each other, the said will being ^{first} distinctly read over to the said testator he being blind in the presence and hearing of us and the above the interlineation being by us first observed. Hubert Floyer Edmund Masters Will Claridge." Edmund Masters and Will Claridge were Whilton men. Perhaps Hubert Floyer was the lawyer.

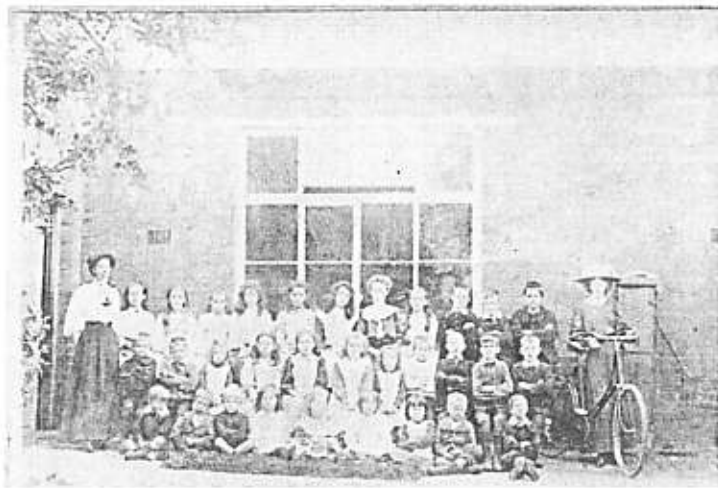
It may be that Jonathan Emery had strong feelings that everyone should be educated enough to make their own decisions. His will included bequests of £20 apiece to his two first cousins Ann Goff and Mary Rainbow, "free from the controul power debts and engagements of their present or any future husband or husbands."

The details of founding the school were very much left to the discretion of Jonathan's executor, Thomas Freeman, who was enjoined to "lay out and expend the sum of five hundred pounds in founding a Charity School for teaching poor children of the parish of Whilton aforesaid in such manner as he shall think fit and approve of."

In fact Thomas Freeman died before he could carry out these instructions and there were some complications before a building was acquired by later executors. That building is still partly used for educational purposes. We can imagine that this would have pleased old Jonathan Emery.



Whilton and Brington Playgroup in about 1983



An undated photo of Whilton School pupils outside the school with the pump to the right. Late 19th century.



Mrs Osborne with her Whilton School pupils. 1930s.

WHILTON VILLAGE HALL

A Village Appreciation

Users of the Village Hall will notice that the floor has been re-sanded and sealed, and is now looking amazingly clean and fresh. This was arranged by the Village Hall Management Group, who would like to record special thanks to the secretary, Nick Busby. Nick organized and liaised with the company who did the work, and personally moved the hall furniture in preparation.

WHILTON VILLAGE HALL 200 CLUB 2018 – 2019

The draw usually takes place at a Social Lunch.

Below are the results of the July draw.

JUNE 2018

1 st PRIZE	T Gardner	065
2 ND PRIZE	S Toone	132

JULY 2018

1 ST PRIZE	J Busby	156
2 ND PRIZE	S Toone	132

Congratulations to the winners!

♪ ♪ WHILTON WARBLERS ♪ ♪

Friday 7th July was the day of the Summer Concert in the church. Despite the high temperatures the building was filled for a programme of mixed music. This included some songs by the choir and a variety of solos by choir members with a guest appearance by Alice Gow, who sang with her ukulele.

Two days later some choir members were singing again, as they joined mass choirs in the Albert Hall to perform Faure's Requiem and other music.

Choir members were involved in singing for the wedding of Jessica Hawkins, daughter of choir member Sarah in August, and are now beginning to prepare for their Christmas concert.

AUTUMN EVENTS AT WHILTON LOCKS GARDEN VILLAGE

During half term there will be **Cuddle Sessions** on Wednesday, 24th October from 11 a.m. to 12 noon and from 2 – 4.30 p.m.

There will be another Cuddle Session on Wednesday 31st October from 11 a.m. to 12 noon.

Meet the Animals. Guaranteed Cuddles all round! It's super fun for all ages - do you fancy a scary spider or something more cuddly? There's a drink of squash for the children and a regular coffee or tea for the adults, included - and a great event. Children must be accompanied by a paying adult! Booking advised.

SOCIAL LUNCHES

The summer Social Lunch was held on a warm sunny day on 17th July. The guests were greeted with cold drinks which went down very well. There were home-made turkey and ham and beef and ham loaves served with hot new potatoes and a mixed salad. The cold desserts were very welcome in the heatwave. These included a vanilla cheesecake, a raspberry trifle and a large fruit salad, with cream and ice cream. Soft drinks were served during the meal and tea and coffee and chocolates afterwards. No one was very eager to stand up and go home after that!

Autumn Lunches

There are two Social Lunches planned for the autumn. The first will be on **Tuesday 11th September** and the second on **Tuesday 27th November**.

We meet in the Village Hall at 12.30 for 1 p.m. From September the price will rise to £6 per head as this will help to meet rising costs. To book a place please contact:

Anthea (843319 / anthea.hiscock@tiscali.co.uk)

or

Shirley (842968).

TURKEY AND HAM LOAF AS SERVED AT THE JULY SOCIAL LUNCH

Ingredients

1 lb minced turkey
1 lb minced cooked gammon
4 – 6 minced smoked streaky bacon rashers
3 oz breadcrumbs
3 eggs, beaten
3 tablespoons tomato ketchup
2 medium onions, chopped
2 teaspoons mixed herbs
Salt
Pepper
Fresh tarragon

Method

- Combine all ingredients and stir well.
- Put into a loaf tin lined with greaseproof paper.
- Cover with greaseproof paper and then with foil
- Place in a container of water which reaches half way up the tin.
- Bake in the oven at 180° for approximately 1 hour 15 minutes.
- Cool in the tin and then chill overnight.
- Turn out, garnish with fresh tarragon and slice.
- Serve with redcurrant jelly.

Autumn

Use the clues to fill in and solve the puzzle below.

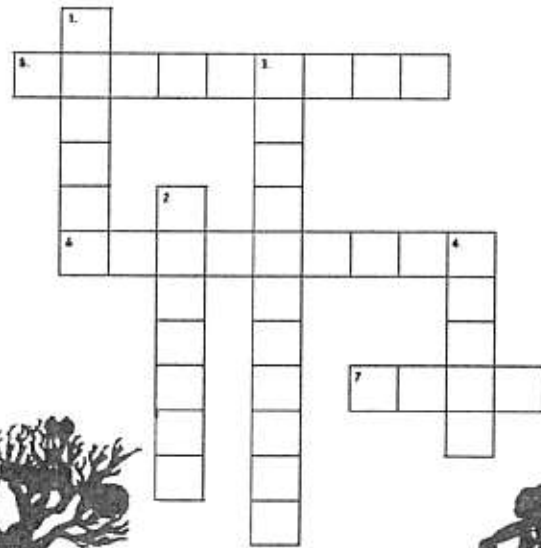
Clues

Down

1. These turn bright colours in autumn and fall off the trees. (6 letters)
2. To celebrate Halloween, lots of people carve these vegetables into lanterns. (7 letters)
3. A type of deep sleep that some animals go into when it's cold. (11 letters)
4. The direction birds fly in when they migrate in autumn, ready for winter. (5 letters)

Across

5. These animals roll into a tight ball during autumn and fall into a deep sleep. (9 letters)
6. These animals hide nuts and seeds during autumn, ready for winter. (9 letters)
7. Squirrels hide these in autumn for food during the winter. (4 letters)



Autumn Anagram Challenge



The following anagrams are all words related to the autumn season and harvest festival. Can you solve each word and match them up with the real word?

ofdo
nppmuki
nroc
tharsve
spplae
nuutam
traocrs
krfoiwres
gvebetlesa
lcrkberiabes

corn
harvest
vegetables
blackberries
autumn
pumpkin
food
apples
carrots
fireworks



The Whilton Newsletter is published quarterly and circulated free to every household within the parish boundary. The costs are met by the Parish Council.

We thank all the volunteers who provide articles and information for the Newsletter and who deliver it.

The Editors are:

- Anthea Hiscock, Langton House, Main Street
Telephone: 01327 843319
e-mail: anthea.hiscock@tiscali.co.uk

- Jon Brierley:
e-mail: Jbrierley@aol.com

The Editors welcome material for the Newsletter. If possible please send your contribution by e-mail. If you do not have a computer, we will be happy to type handwritten articles for you.

The next issue will be the Winter Edition, covering December to February 2019. The last date for contributions will be 20th November 2018.

The Newsletter is published quarterly, but Whilton has a website: www.whilton-village.net. This contains details of the organisations in the parish and a picture gallery. It also has latest news and updates.

The Parish Council has its own website: www.parish-council.com/whilton

**WHAT'S ON IN WHILTON
AUTUMN 2018**

DAY	DATE	TIME	PLACE	EVENT
Sun	2 Sept	11 a.m.	Harlestone Church	United Benefice Eucharist
Wed	5 Sept	9.30 a.m.	Village Hall	Pre-School term begins
Sun	9 Sept	11 a.m.	Church	Worship for All
Tues	11 Sept	12.30 for 1 p.m.	Village Hall	Social Lunch
Wed	12 Sept	7.30 p.m.	Village Hall	Parish Council
Fri	14 Sept	7.30 p.m.	Village Hall	Local History Society
Sun	23 Sept	6 p.m.	Church	Eucharist
Wed	3 Oct	7.30 p.m.	Village Hall	Gardeners Association
Sun	7 Oct	11 a.m.	Church	United Benefice Eucharist
Sun	14 Oct	4 p.m.	Church	Harvest Festival followed by tea and cakes
Wed	24 Oct	11 a.m. – 12.2 – 4.30p.m.	Whilton Locks Garden Village	Meet the animals Cuddle Sessions
Sun	28 Oct	6 p.m.	Church	Eucharist
Wed	31 Oct	11 a.m. – 12.2 – 4.30p.m.	Whilton Locks Garden Village	Meet the animals Cuddle Sessions
Sun	11 Nov	TBA	Church	Remembrance Sunday special commemoration. Details TBA.
Wed	14 Nov	7.30 p.m.	Village Hall	Parish Council
Fri	16 Nov	7.30 p.m.	Village Hall	Local History Society
Sat	17 Nov		Whilton Locks Garden Village	Ice Rink opens
Tues	20 Nov		Last day for contributions to Winter Newsletter, including your poetry	
Sun	25 Nov	6 p.m.	Church	Eucharist
Tues	27 Nov	12.30 for 1 p.m.	Village Hall	Social Lunch

Regular events include:

- **BRINGTON AND WHILTON PRE-SCHOOL** in the Village Hall
Term time: Mon, Wed, Fri 9.30 – 1 p.m. and Mon, Wed 1-3 p.m. for over 3's.
Contact: Michaela Mullen 07546440572
- **BELL RINGING** in the Church: Mon 7.30 – 9 p.m.
Contact: Justin Baker 844263 or Janet Bowers 842851
- **WHILTON WARBLERS CHOIR** in the Church or Village Hall: term time, Tues. 7.15 for 7.30 p.m. Contact: lindahalltreacy@gmail.com
- **APERTURE PHOTOGRAPHY GROUP** at the Saracen's Head, Little Brington, Thurs. 8 p.m. For dates and details see article.