

# Whilton Autumn Newsletter

## September - November

### 2013

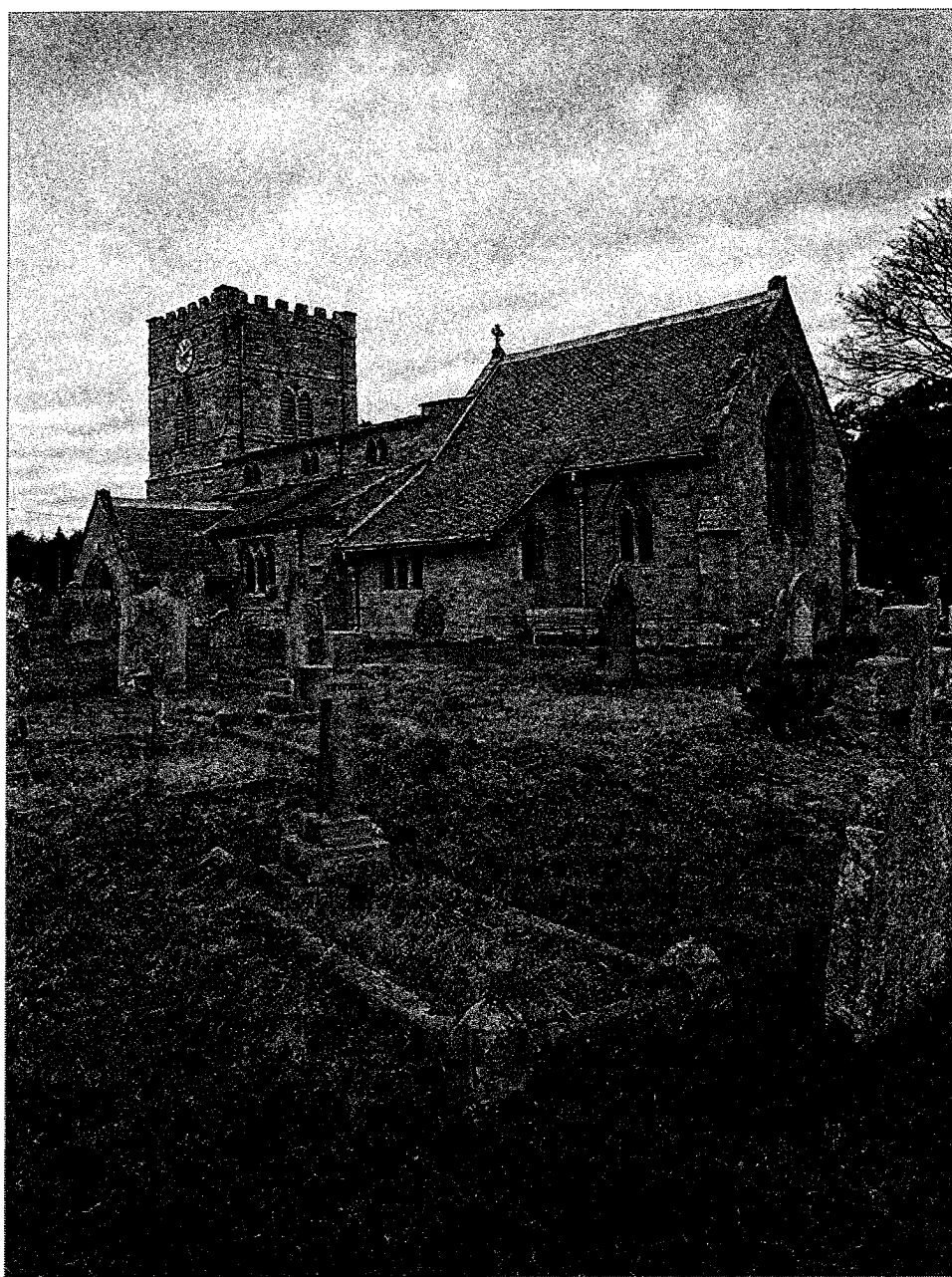


Photo by Neil Phillips

LETTER FROM  
THE EDITORS  
September - November  
2013.



Summer 2013 has been an active time in Whilton. Within the parish there have been some new initiatives, including the "Bake-off" in August, and the new choir, "Whilton Warblers", which held its first session on Tuesday 16<sup>th</sup> July.

This means the church building will be open for bell ringing on Monday evenings, singing on Tuesdays, and for worship on most Sundays. There has also been a marriage celebration at St Andrew's with another wedding planned there for September. It seems appropriate that we should feature the parish church on our cover, photographed by Neil Phillips of Cottam. The photo also shows the graves of the parents, sister and niece of Henry Reynolds. We shall be hearing more about Henry over the coming years, as he won the Victoria Cross during the First World War.

Although Whilton is only a small parish, we hope our readers will find something to interest them here, and maybe an activity to join in. We always welcome feedback, fresh ideas and articles from parishioners, and if you would like to contribute something for the next issue, please contact one of us. Our details are listed inside the back cover.

The Editors

## NEWS FROM WHILTON PARISH COUNCIL

From the Clerk's Pen



Since the last newsletter, Peter Wingrave has been re-elected for another year as Chairman of Whilton Parish Council at the Annual Parish Council meeting in May, so it's business as usual.

Despite having a very tight budget for 2012/13, I am happy to report that we managed to end the financial year within budget and, for the first time in a number of years, both our internal and external auditors gave us a clean bill of health, with no issues arising. We hope to build on this in years to come.

Although a decision is imminent, we are still awaiting an outcome to the objection lodged by the Council in respect of the construction of nine pit garages for use in conjunction with Whilton Mill Kart Circuit, on the basis that noise levels on race days would rise to unacceptable levels.

Lastly, I am cautiously optimistic that we're finally making headway with registration of the Village Green. Due to the legal and cost implications to residents with regard to maintaining the access road to Stone House, it was decided to register only the land in front of the church as Village Green. It was further agreed that the land in front of Stone House and an area near Home Farm Grounds be dedicated as highway land in terms of Section 37 of the Highways Act 1980. This means that these areas shall remain maintainable at public expense by Northamptonshire County Council's Highways and that Stone House will remain accessible directly from the public highway.

Aren't we fortunate to enjoy such a lovely well-deserved, warm summer?  
Long may it continue!

Erica Fothergill  
Parish Clerk

## UPDATE FROM PCSO SARAH GRAY

I can now confirm I am back to full duties and very much enjoying being back. A big thank you to PCSO Charlotte Whitehead for stepping in and supporting the communities so well.

**Information needed** - If you have any information in relation to drug use please let me know - if there is a smell, cars visiting properties for very short visits, locations of drug use, e.g. car parks, lay-bys or bus stops. We have a pro-active team that needs this information to act upon - many thanks in advance.

**Tack Marking** - I am currently working down a list visiting farms with horses to mark their tack. This is a free service and takes minutes to do, with a short form to fill out. I hope to reach all of the farms in due course.

**Speed Week** - Officers have been designated villages to carry out speed reinforcement. Watch out....

PCSO Sarah Gray 7207 - Daventry Safer Community Teams

Northamptonshire West Area  
Northamptonshire Police  
Telephone: 101 Mobex 778156 Twitter @DB7207

Mobile 07557 778156

Email: sarah.gray@northants.police.uk  
Address: c/o Daventry Police Station, New Street, Daventry

\*\*\*\*\*

### Ladies' Pot Luck Supper

Following a break for the summer we will shortly be scheduling a Pot Luck Supper for September. These fun evenings are a great opportunity to chat and catch up on everyone's news whilst sampling new dishes. If you haven't joined us yet then what are you waiting for? We're not a cliquey group and we're definitely not competitive – if you want to bring a simple salad or a dish of potatoes then that's fine. Email me at [teresa@tlc-uk.co.uk](mailto:teresa@tlc-uk.co.uk) and I'll pass your contact details onto September's hostess. Sorry, ladies only.

### Jam Jar Appeal

Now that the fruit is ripening I'm in need of jam jars. If you have any to spare please let me know ([teresa@tlc-uk.co.uk](mailto:teresa@tlc-uk.co.uk) or 843988) and I'll collect them or you can leave them at Woodview on Brington Lane.

Teresa Leadbetter

## THE WHILTON BAKE OFF



Saturday 3 August was a bright sunny day, and preparation started early to get the Old Coach House ready for the Whilton Bake Off and Whilton Warblers' inaugural performance.

Entries for all the categories - Victoria Sponge, Cup Cakes, Quiche and a special category- started to arrive from 3pm, and continued to be dropped off right up to Judging Hour! It really was a fantastic stream of gorgeous looking cakes, quiches, tarts and cup cakes. The table was laden with the most fantastic array of goodies.

Our Judge, Pippa Morrison, a Pru Leith trained chef, started and tasted every offering and was very impressed with the extremely high standard. She said that it was a really hard decision, but judge she did and the winners were brought out with a fanfare!

The singers and their congregation joined Pippa, Jane and Ros to come for a well earned cup of tea and cake. There wasn't much left!!

£185 was raised and has been given to The Air Ambulance, who were really grateful.

A huge thank you to the Stoddarts who let us take over their house, Ros Gardner for making sure everyone got tea, Pippa Morrison for her judging, everyone who took the time to make something, the Whilton Warblers, and to everyone who came and supported. Thank You!

Hopefully this will be the start of many a Whilton Bake Off.

Photographs have been taken by Richard Oliver and will be uploaded to the Village website - <http://whilton-village.net/>

Lucy Gow

.....



### ROUGHMOOR SPINNEY

A work party will be arranged during the autumn to lay more granite chippings along the Spinney paths.

Please watch the notice board for details of the time and date, when the more volunteers the better, as this is a heavy but satisfying job, helping to provide better access for visitors to the Spinney.

## SOCIAL EVENTS DURING THE DAYTIME IN WHILTON 2013

### How it began

After the Women's Institute went into suspension in December 2005, a group of residents of the parish met and number of ideas were put forward to further social activities. One of the ideas was to have a social lunch in the village hall; perhaps twice a year.

Shirley & Derek Brown & Anthea Hiscock met to put this into motion and a date was fixed for 30<sup>th</sup> November 2006 (St Andrew's Day) for the first lunch. A meal with a theme of pork (in the past village pigs were slaughtered around this date) was prepared by Shirley, Derek and Anthea. Other help was given with the serving of the meal and the clearing up afterwards.

As this was successful, other meals were arranged for the Summer & Autumn 2007. Again in 2008 there were meals in July and December. By this time other people were helping with the ideas, preparation and serving of the food. On the back of the appreciation of these social occasions, a Spring meal was added in 2009. This took place on Shrove Tuesday with pancakes incorporated and as it also coincided with Fair Trade Fortnight, as many of those products as possible were used in the preparation of the three courses. This has since been an annual event.

In 2009 'Tuesday Chat' was trialled and has been successfully going ever since. These meetings take place each month when there is no Social Lunch at 2.30pm – 4.00pm in the village hall.

### WHILTON SOCIAL LUNCH

Our Midsummer Social Lunch was held on Tuesday 11<sup>th</sup> June 2013 at 12.30pm.

As it was the Coronation Diamond Anniversary, Coronation Chicken was served as the main course with a vegetarian option of Mushroom & Hazelnut Loaf. Various salads accompanied. The usual tempting three puddings were then introduced for choices to be made (rhubarb & strawberry crumble, fresh fruit salad and lemon pudding) – no problem as most diners had all three, some separately and others mixed. Custard, crème fresh and vanilla ice cream were also available. We finished with tea or coffee and chocolate mints. Juices and soft drinks were offered throughout the meal and some donated wine.

Another enjoyable event.

Our next Social Lunch will take place on 19<sup>th</sup> November - details nearer the time. Please come and join us then.



### TUESDAY CHAT



Our last Chat was held on 23<sup>rd</sup> July 2013 and was well attended. As usual the tea was plentiful, the cakes were delicious and the chat was entertaining.

Our autumn get-togethers will be on Tuesday 17<sup>th</sup> September and on Tuesday 22<sup>nd</sup> October at 2.30pm in the village hall.

All are welcome to join us; just bring £1.50 towards the rent.

## Letter from the Rectory

Dear Everyone,

After Easter, four of us from the Benefice went on the diocesan pilgrimage to the Holy Land. Pilgrimages, like most holidays, consist of planes, hotels and coaches but for us our pilgrimage was different from a holiday; we were visiting the sites of the Bible in the modern context of today. While in the last two thousand years, technology has changed the way in which we carry out our daily tasks, human society still consists of much of the same deep problems as then, with the same oases of normal life. How Jesus lived and what he said then, still speaks with relevance to us today.

The Bethlehem of our Nativities still has shepherds with their flocks roaming in the hills around. The Herod who tried to destroy the Baby Jesus has been replaced with a great concrete wall dividing the Palestinian West Bank from the Israeli territory; the spears of Roman times becoming the guns that were so flaunted.

Then there was Galilee with its jostling cities including a vastly expanded Nazareth of Jesus' childhood, Cana (we were recommended not to buy the wine – the good must have run out!) and the Roman city of Capernaum where Jesus lived beside the lake. Here there was a peace in which we could take in, as the crowds did then, the radical teachings of Jesus, as radical today as they were then.

Jerusalem still has tension and conflict. The political striving between the Jews of Jesus' day and the Romans has been replaced with war between the religions, all trying to seek God. But the hustle and bustle of the city remains the same, even if in a different culture. It was the conflict of Jesus' time that led to his death; we all still see suffering in the world around. But it is today, as it was then, amid the hustle and bustle, that we find the Resurrection. The Church of the Holy Sepulchre, which enshrines both the traditional site of the Crucifixion and the Resurrection was chaos, so packed with people that we could hardly move, all making their voices heard in song or shouting or chatter – and that included us. It is into the real world that the Resurrected Christ comes today, as he did two thousand years ago, not into an idealised world of quiet and calm. Faith in a living God interjects calm into our chaotic world, but does not subdue the chaos.

Sue

Rev Sue Kipling, The Rectory, Main Street, Great Brington, NN7 4JB.

Email: [suekipling@btinternet.com](mailto:suekipling@btinternet.com)

01604 821335

## NEWS FROM ST ANDREW'S

We have had a busy few months since Dave Stoddart and I were appointed as Churchwardens.

Our open meeting in June was well attended and brought out an interesting exchange of views about services, music and future events and prompted a number of new ideas.

Firstly the Whilton Warblers choir has been meeting in the church on Tuesday evenings at 7.15. Organised by Linda Treacy it is open to all and has been well received. If you would like to know more or become involved please contact Linda (842034 [lindahalltreacy@gmail.com](mailto:lindahalltreacy@gmail.com)).

Secondly the great Whilton Bake Off organised by Lucy Gow and family was a great success - it was good to hear of so many villagers actively taking part and showing of their cookery skills.

Keith Hiscock has offered to organise a faith discussion group – more details of this are in a separate article.

We are also trying to vary our services and focus on one major event each month. In July we held a Pet Blessing Service.



We were fortunate that it took place on a really warm afternoon and we were able to hold the service outside. There was a good attendance with more dogs that I could count, one cat, two guinea pigs, a hamster and a tortoise plus their human friends who enjoyed cakes and Bucks Fizz.

August saw the Benefice service hosted in Whilton for the second time this year when we were pleased to welcome visitors from the other parishes in the Spencer Benefice.

This year we have decided to try a new format to celebrate Harvest. We will be holding a Harvest Festival Supper in the Village Hall at 7.00 Saturday 28 September. The plan is to hold an informal session with songs from the Whilton Warblers which will be followed by a hot buffet supper. All residents are welcome to attend and make a harvest donation either by providing food for the buffet or items to be auctioned after the supper.



Further details to follow but if you would like to support this new event please let me know. Please also note that there will not be a service in Church on Sunday 29<sup>th</sup> September

Christmas seems a long way off but we are already making our plans for services and events and we do hope that you will be able to take part.

We are always open to your ideas and suggestions.

If you want to contact us, Dave Stoddart is on 842167 and I can be contacted on 843380 or by email [Jbrierley1@aol.com](mailto:Jbrierley1@aol.com).

Jon Brierley, 7 Langton Rise



## FAITH TO SHARE



Whilton has well-established groups for history, gardening, bell ringing, social meals and chats in the village. Now an old singing tradition is being revived with a choir, and what a village church can offer and do is being reviewed.

All this has led to me wondering if there are a few of us who would like to meet to discuss and explore issues and experiences in the Christian Faith. There are people of different Christian traditions in the parish who might share my concern that this important aspect of our own and the parish life could benefit from sharing with each other, perhaps once a month, or as the group decide. The meetings could take many forms from studying a book/character of the Bible to looking at issues in our lives or society through a Christian lens. This might be based on a report such as the recently published: 'The lies we tell ourselves,' about why people are poor, or the soon to be debated 'Assisted Dying Bill', through books such as the Harry Potter series, to religious issues in films such as 'The life of Pi' or 'Lincoln'. The group would decide what it wanted.

Sue Kipling and I have agreed to test the water on this idea and to offer a venue and date for anyone wanting to explore this suggestion. We would want to stress its informal inter-denominational basis and that the programme would be agreed and led by members of the group. Its aim would be to support us all in our faith journeys.

**The date: Thursday 3<sup>rd</sup> OCTOBER**  
**The venue: LANGTON HOUSE, Main Street**  
**The time: 7.30pm.**

If you would be interested in knowing more please have a word with me - phone 843319 - or call in.

Keith Hiscock.

\*\*\*\*\*

### **MICHAELMAS**

Michaelmas, the Feast of St. Michael and All Angels, is celebrated on the 29th September. As it falls near the equinox, it is associated with the beginning of autumn and the shortening of days and is one of the "quarter days".

There are traditionally four "quarter days" in a year : Lady Day (25th March), Midsummer (24th June), Michaelmas (29th September) and Christmas (25th December). They were the four dates on which servants were hired, rents due or leases begun. It used to be said that harvest had to be completed by Michaelmas, almost like the marking of the end of the productive season and the beginning of the new cycle of farming. It was the time at which new servants were hired or land was exchanged and debts were paid, and came to be the time for the beginning of legal and university terms.

## FAMILY NEWS

### WEDDING BELLS

Several couples with Whilton connections have celebrated their marriages this summer. We congratulate them and wish every happiness for the future to:



*Photo: Richard Oliver*

Jamie Ashby and Michaela Worster, who were married at Kilsby Church on 11<sup>th</sup> May. Jamie is the son of Diane Day of 9 The Gardens.

Emily Lee and Boon Yong who were married on 8th June, and are pictured in front of a traditional Chinese dragon. Emily is the daughter of Adrian and Agnes Lee of The Little Rectory. The ceremony was followed by a blessing in Whilton church and celebrations, including a dragon dance.



*Photo: Richard Oliver*



Helen Denbigh and Paul Picton who were married in Great Brington Church on 19th July. Helen is the daughter of Steve and Gill Denbigh of Russet House, Manor Lane.

## FAMILY NEWS continued

Andrew Tibbs and Karen Roberts who were married at The Cathedral Church of St.Paul in Nicosia, Cyprus on 10th August. The temperature outside the church was 42°C ! Andrew is the son of Derek and Linda Tibbs of 5 South View.



**Congratulations** to young people from the parish who have recently completed their studies and gained qualifications. These include:

- Jessica Hawkins on gaining her PGCE from the University of the West of England. Jessica is the daughter of Ray and Sarah Hawkins of 6 South View.
- Jake Mitchell on his Degree in Law with Criminology from Nottingham Trent University. Jake is the son of Paul and Sarah Mitchell of the Old Dairy, Buckby Lane.
- Chris Halestrap of Langton Rise who has just finished at Lawrence Sheriff School in Rugby with 4 A levels. He achieved an A\* in maths, and A grades in further maths, physics and economics. Chris has secured a place at Nottingham University to study maths and economics from September 2013. We wish him all the best.

\*\*\*\*\*

It is with sadness that we record the death of Diane Beaumont of Langton Rise who died in June. We send condolences to her family.

\*\*\*\*\*

*If you have family news or celebrations, please let us know if you would like these to be included in the next Newsletter. We can only record those we are told about.*



*Tuesdays, 7.15 p.m. @ Whilton Church*

*Do you sing in the shower? Do you sing to the radio?  
Do you sing to yourself!!*



*If you have answered "Yes" to one or more of the above  
then you are the perfect singer for us.*

*We are a Community Singing Group and would like you to come along.*

*The idea is to just have fun.*

*You don't need to read music or have had singing lessons -  
you do need enthusiasm to just sing.*

*All age groups welcome -*

*girls, boys, men, women, grannies and grandads.*

*Please bring your own mug for refreshments.*

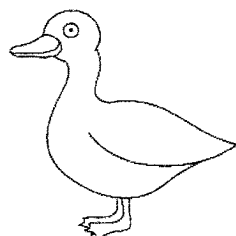
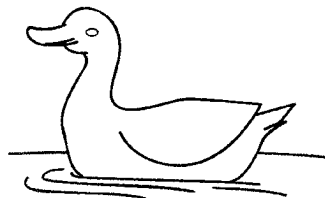
*For further information ring - Linda 01327 842034 / 0775288590*



### **NOVEMBER WEATHER LORE**

11<sup>th</sup> November is the almost forgotten Feast of Martinmas, associated with some old weather sayings. Will they be right this year?

If ducks do slide at Martinmas,  
At Christmas they will swim.  
If ducks do swim at Martinmas  
At Christmas they will slide.



Ice before Martinmas,  
Enough to bear a duck,  
The rest of winter  
Is sure to be muck.



# WHILTON GARDENERS ASSOCIATION



News from Olive

Hi everyone!

What a scorcher of a summer so far. Most of our lawns had dried up, flowers came and went within a week, some only a day. This year spring and summer came together. I hope your gardens did not suffer too much. (Anyway its a good excuse to put something new in.)

On the 5<sup>th</sup> June Pauline Pears opened her talk with a quiz on what were **Pests or predators**, because they all eat each other, making even the "baddies" seem good. She explained the clever way in which colour and disguise played a big part in acceptance or rejection. A very interesting evening.

In July there was a good turn out of members and guests who visited **Christine Leftley's garden in Nobottle**. What a super garden to walk around on a summer's evening finishing with refreshments. The garden was packed full of plants and interesting water features etc. This garden is a credit to Christine for years of hard work and thoughtful planting.

August 7<sup>th</sup>, another glorious summer's evening, saw about 26 (approx.) members and friends walk around three gardens in Whilton, starting at **Christine and Neil Phillips' garden at Cottam** in Main Street. What they have achieved in a few years is remarkable. Christine's knowledge of plants is self evident. The second garden belonged to **Jo and Philip Grant in Manor Lane**. Philip's passion for flowers following on makes it an ever-changing garden, but always in colour. Lots of hard work has certainly paid off. The final garden, a short walk from the village at **Roughmoor Grounds**, was well worth it. Although new, it showed that with its clever and creative planting, this garden will mature into a garden fit to take its place in the National Gardens open to the public .

This summer we also held our annual competition for the best tub or hanging basket, and for the best front garden.

Congratulations to the winners:

- Best tub or hanging basket:  
Mr and Mrs Bartram, Cherry House, Wadd Close Lane.
- Best front garden:  
Jon and Helen Brierley, 7 Langton Rise.

**2<sup>nd</sup> October** Don't forget Celia Davis will talk on: "**The sex life of plants**". Why not join in, enjoy the company of like-minded people in your village and become a member. New members are always welcome.  
Telephone: 07921429228 or 01237842401

## WHILTON LOCAL HISTORY SOCIETY

The society met on Thursday 11<sup>th</sup> July when the subject was:

### “A VOICE FROM WHILTON’S PAST”.

This was an opportunity to hear some of the recorded memories of Will Adams.



*Will and Freda Adams at the door of St Andrew's Church*

For various reasons, it seemed appropriate to listen to this recording in 2013 in the Village Hall. Will was born in Whilton in 1909 and died here in 1993, 20 years ago. Through his mother, Kate Rose Adams, nee Taylor, Will was descended from Thomas Taylor, the first schoolmaster of Whilton, who taught in Whilton School from about 1786. The old Whilton School is now the Village Hall in which we were sitting to listen.

The recording was made in 1992, a year before Will's death. We were interested to hear the accent and speech patterns of an old man, steeped in Whilton history. He referred to his grandfather, James Adams, who was a baker in Whilton. Will did not know where his grandfather baked, but records show that he lived in the Stonehouse, and that he took over from his father, another James Adams, who died in 1875.

Will also referred to his uncle, who had lived in Buckby Lane in a cottage long since demolished. This uncle was Joseph Adams, who was left with three children, when his wife Sarah, died in child birth in 1876. Will remembered that only the two daughters, Mary Anne and Isabella, lived with their father. Their brother George Lewis Adams, was brought up by his maternal grandparents, whose surname was Boot.



*Sarah Ann Adams, with her son, George Lewis, about a year before her death in 1876.*

Will lived in several Whilton houses, renting according to the fortunes of the family. He was born at the Manor House, but when his father became a canal lengthsmen, they moved to Windlass Cottage. At the beginning of the First World War the Adamses moved back to the village, living a while in Tudor House, spending another period in the Manor House, and at Inglenook.

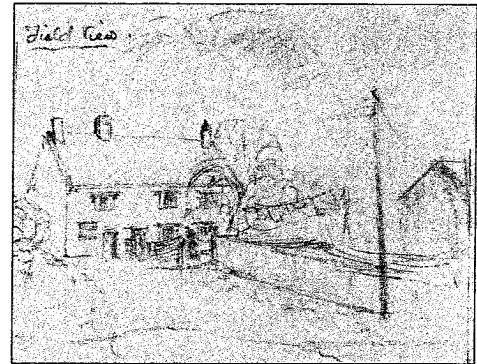
Will grew up with family members around in the village, and with a younger brother Oliver, and a sister, Marjorie. His mother had memories of the 1890s in Whilton, and shared them with her children.

As a child Will knew a variety of people who came bringing services and goods to the village, among these were the tinman, who repaired metal utensils, "Clockie" who mended clocks and watches, especially if provided with a cup of tea and slice of cake, and the crumpet man, who walked over the fields with one of his baskets on his head.



*Will and his brother Oliver at a family wedding. Will was aged about eleven.*

There were memories of baking day, and the delicious smell of pork pies cooking in the communal oven at Whilton Feast. This must have been the memory of Will's mother, as Will said this had ended before his time. He did, however, give a clear description of the way the stick oven worked at Field View.



*A drawing of Field View when Will and Freda Adams lived there.*

Will became a carpenter and married Freda Collier, from a family of carpenters and wheelwrights. They lived at Field View, where Will was still living at his death.

The recording included details of the Whilton wells, most of them open, but some with a pump. Langton House and Langton Cottage had the deepest wells at 50 feet. In Manor Lane the depth was only 10 feet, and Holly House and The Old Cottage had springs in their cellars.

Our minds were taken back over a century, helping us to appreciate the depth of experience within one small village.

\*\*\*\*\*

## **AUTUMN MEETINGS OF THE LOCAL HISTORY SOCIETY**

The next meeting of the Local History Society will be on  
Thursday 12<sup>th</sup> September 2013.

This will continue to work on  
**The Brook Project: Peopling the Map**

We shall also be planning the coming year's activities for the society.

On Thursday, 28<sup>th</sup> November all are invited to hear about  
**The restoration of the historic gardens at Canons Ashby.**  
The speaker will be Bob Illingworth, who is a volunteer at Canons Ashby.  
All are welcome.

## Whilton Village Hall and the 200 Club

Whilton Village Hall started life as a farm barn, and was converted into the village school in the late 18<sup>th</sup> century. While it was a school it was often let out on evenings or weekends for village events, but it was after the school finally closed in 1955 that it began a new life as our hall.

By 1961 the group working for a hall could see the end of their efforts in sight. A 1961 newspaper recorded:

*"The village of Whilton, near Daventry, population 168, is a village of hope – hope that by grants, donations and money already in the kitty they can buy the old Church of England School which closed its doors to the last village child five years ago. Purchase of the building itself will be a mere £100 but plans for its conversion into a village hall show an extra cost of £545 5s 8d.*

*At present the village hall fund stands at £228 15s 7d, a grant of £50 has been voted by the Parish Council and recently a whist drive added another £7 to the fund. That leaves a backlog to be made up of £359 10s 1d and that is where the optimism of the villagers begins to play a part.*

*They hope for a grant of £245 towards the conversion – only £114 10s 1d still wanted. They hope for a grant of £22 12s 10d towards equipment - £91 17s 3d required. They hope for a grant of £50 from the Rural Community Council- down to £41 17s 3d. Finally they hope that from a fete to be held in the village on May 27 the £40 odd will be cleared off.*

*"We shall do it; we are practically there," said the man with the greatest hope of all, Mr Horace Clements. "... We have not actually bought the old school yet, but we know we shall be able to get it from the church authorities for £100."*

Later in the year it was reported that the school had been bought, and that Horace Clements had donated a strip of land at the side to create a new entrance. Although the people who did all this work called themselves a "committee", they were in fact a management group, and not a committee of, for example, the parish council. This is clear in the following paragraph: *"Seven village organisations, including the parish council, who have made a grant of £50 towards the scheme, will be invited to nominate representatives to the management committee when the hall is opened."*

When the hall was officially opened Mr Clements said that when the "committee" bought the school, there was no water supply, no sanitary arrangements, and only one open fireplace to heat the building. *"Now we have electrical heating, hot and cold water and all mod cons."*

A generation later there were new expenses. In 1990 it was discovered that the false ceiling *"was imposing an undue burden on the roof timbers giving rise to sagging."* Major work had to be undertaken, and it was decided to install a storage area over the kitchen at the same time. It was at this time that the 200 Club began, as part of the fund raising for the improvements. It was recorded that *"virtually every household in the village joined"*.



Since that time, the money from the 200 Club has been used for particular projects and improvements, as the rents and bequests have covered the everyday running of the hall. The amount contributed by members has not increased since 1990, showing how generous were our predecessors, but the membership has decreased significantly.

Those who manage the Village Hall today would like to thank all who generously support the 200 Club, because this extra fund enables improvements and projects in our hall. The draws are usually held at Social Lunches or at Tuesday Chat. If you pay your annual subscription of £13 it may give the opportunity of a little windfall from time to time! There are 12 draws a year, with a first prize of £45 and a second of £25.

If you are not a member and would like to join, please contact Shirley Brown: 842968 or e-mail: [d.brown253@btinternet.com](mailto:d.brown253@btinternet.com).

<b><u>WHILTON VILLAGE HALL 200 CLUB 2013/14</u></b>		
<b><u>April 2013</u></b>		
<b>1<sup>st</sup> Prize</b>	<b>023</b>	<b>S Brown</b>
<b>2<sup>nd</sup> Prize</b>	<b>148</b>	<b>A Hiscock</b>
<b><u>May 2013</u></b>		
<b>1<sup>st</sup> Prize</b>	<b>101</b>	<b>A Welch</b>
<b>2<sup>nd</sup> Prize</b>	<b>093</b>	<b>P Grant</b>
<b><u>June 2013</u></b>		
<b>1<sup>st</sup> Prize</b>	<b>191</b>	<b>G Haynes</b>
<b>2<sup>nd</sup> Prize</b>	<b>040</b>	<b>P Wood</b>
<b>Congratulations to all the prize winners</b>		

\*\*\*\*\*

The **Mobile Library Service** to Whilton has now ceased. The editors are not aware of any regular user of the Mobile Library, but the Home Library Service does still exist:

This is a **free** service for customers who are **unable to get to the library**, either through age or disability.

A librarian visits you at home to discuss your reading needs. You can either select items yourself or library staff will select for you according to your tastes and requirements.

Volunteers then **deliver to your home** every month.

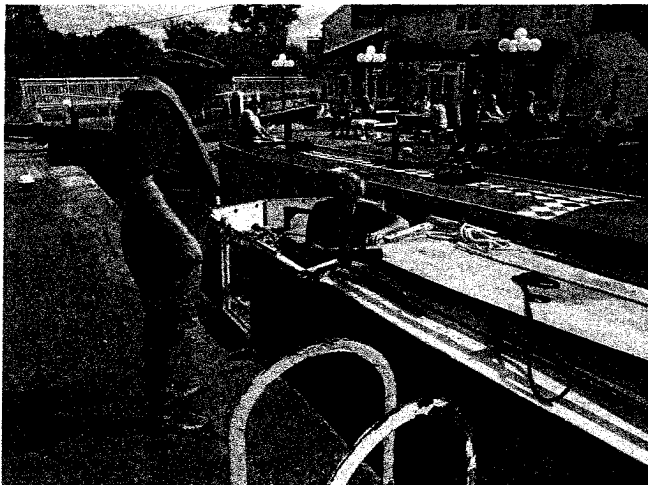
To arrange a visit or find out more, please contact your local library.

## VOLUNTEER LOCK KEEPING

By Richard Oliver

I decided to become a Volunteer Lock Keeper (VLK) when a variety of volunteering roles were advertised early in 2012. British Waterways was being hived off from government control and was to become a charitable company, the Canal and River Trust, responsible for the canal network in England and Wales.

Following initial training that includes water safety (*all VLKs must wear a life jacket*) and management and also first aid, there is an on-site assessment to make sure you understand what is needed to do the role properly. I volunteer one day a week on the Buckby flight, which is a set of 7 locks that cover just over a mile. The bottom lock is at Whilton Locks, adjacent to the marina and the Top Lock is adjacent to The New Inn on the A5, which is height difference of 19 meters.



*(Chris Freeman-Volunteer Lock Keeper on Buckby flight talking to a boater at Top Lock)*

The main responsibilities of a VLK are to help boaters, monitor water levels and to ensure that the locks are operated safely. On the Buckby flight this involves a lot of walking to cover the whole stretch. It's not the role of a VLK to operate the locks for everyone but to ensure that the majority of people using the system understand how they work and can then work the locks safely themselves.

However, volunteer lock keepers are there to ensure that boaters, especially novice boaters have a good experience of being on the waterways and we do help boaters who struggle or find they cannot operate the gates on this flight, as on the Buckby flight particularly, some are very heavy. The locks on the flight are double locks so can take 2 boats at a time of up to 70 feet each. During the summer months there are more hire cruisers on the water and some people need a lot of help as it's often the first time they've either steered a boat or been through a set of locks.

I've also worked some sessions on the Watford 'staircase' locks just further along the A5 at Watford and also at Foxton Locks near Market Harborough. Both these sets of locks require all boaters to check-in with the on-duty lockkeeper before entering the flight.

A staircase set of locks is one where the top gate of one lock is also the bottom gate of the next. It requires a little more care to ensure that there are no mishaps but most boaters manage to work themselves through safely. It does however mean there can be long waits as both these sets of locks were designed to accommodate only single boats so that at peak times, it can mean a wait of 3 hours or more before a boat can travel through. Sometimes an overnight stay is required by boaters waiting to pass through the locks as traffic through is halted from early evening till the following morning, when a lock keeper is again on duty to manage the flow of boats up and down the canal

It makes for an interesting day as while on duty I'm often asked a lot of questions by new boat owners or members of the general public.

.....

### **WHILTON IN NEED CHARITIES: ARE YOU IN NEED OF SOME FINANCIAL ASSISTANCE?**

#### **A REMINDER:**

The charities with their investments of £4500 exist to provide a small grant not exceeding £300 in any financial year to help meet basic requirements or relieve debt or stop the incursion of it in circumstances where it will assist those with insufficient resources.

Some will be starting new training or university courses this autumn and may wish to consider applying. Others may be seriously affected in various ways, by the economic downturn, or by rising prices for commodities, lighting, or heating fuel while trying to manage on a fixed income.

If either you or someone known to you has one of these concerns please contact the Rector Sue Kipling (01604 770402), Ann Gilbert (843169), or me, Keith Hiscock, (843319) to see if the Charities can be of some help.

Permanent notices remain on both the Village and Locks notice boards. This reminder is published in the autumn issue of the Newsletter to remind those about to embark on university study or new work training and to continue to indicate there are safeguards for the confidentiality of applicants. We will also discuss any 'What If?' situation before any name is mentioned if you or an agency approach one of us, either on your own or another's behalf.

This fund remains for anyone normally resident in the parish boundaries and we would urge you to mention the possibility to those who should benefit from the forethought of previous wealthier generous parishioners.

Keith Hiscock

## TARGET OVARIAN CANCER

On 5<sup>th</sup> October Gill Denbigh will be taking part in a sponsored walk at Hatfield House.

The aim is to raise money for "Target Ovarian Cancer", which works to:

- Educate women, GPs and other health workers
- Support those diagnosed with the illness
- Contribute towards research

Gill and Steve's daughter Kate died earlier this year, and this is being done in memory of Kate and in the hope that someone else's daughter may benefit.

If you would like to contribute the sponsor link is:  
[www.justgiving.com/Kates-Poppets](http://www.justgiving.com/Kates-Poppets)

---

### CAN YOU DO SOMETHING AMAZING?

During Remember A Charity Week (9 – 15 September) we would love you to take a moment to think about leaving the gift of a lifetime to **Northamptonshire Association for the Blind**.

Last year gifts in wills enabled us to continue providing specialist advice, support and information to individuals and their families in their own homes and helped ensure our Sight Centres could stay open and we could offer a volunteer befriending scheme.

Taking care of your loved ones and favorite charities is easier than you think. Remember A Charity has teamed up with The Co-operative Legal Services who can give you free advice and support. Just call **0844 252 9965** and quote RACWILLS01.

For more information or to find your nearest solicitor or will writer visit **[rememberacharity.org.uk](http://rememberacharity.org.uk)**

To find out more, call our Helpline: **01604 719193**, Email: **[helpline@nab.org.uk](mailto:helpline@nab.org.uk)** or visit **[www.nab.org.uk](http://www.nab.org.uk)**

## TOFFEE APPLES

There is every sign that 2013 is going to provide a good apple harvest, and so you might like to try making your own toffee apples for Hallowe'en, Bonfire Night or any autumn occasion.



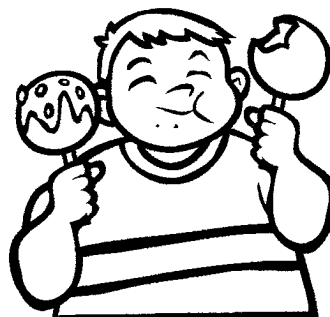
### Ingredients:

10 wooden skewers or lolly sticks  
10 washed eating apples  
350g light brown sugar  
2 teaspoons wine vinegar  
35g butter  
2 tablespoons golden syrup  
Small cake decorations to make them pretty

### Method:

1. Insert a wooden skewer or lolly stick into the stalk end of each apple.
2. Line a large baking tray with baking parchment.
3. Put the sugar in a heavy-based pan with 120ml cold water and heat gently, stirring until it dissolves.
4. Bring to the boil and add the vinegar, butter and golden syrup.
5. Boil gently for 12 minutes, until it has reached the soft-crack stage (138°C on a sugar thermometer, or the point at which a little of the mixture, dropped into cold water, forms threads that bend slightly before breaking).
6. Dip the bottom two-thirds of the apple in the toffee, turning to coat and working quickly.
7. Add sprinkles, stars or other decorations to each apple.
8. Leave to set on the baking parchment for 15 minutes.

You may prefer to coat your apples in melted chocolate, and then roll them in sugar strands before they set.



## **UPDATE FROM ROCHELLE AND SASHA**

As I mentioned in the last Village Newsletter, I have recently been very dedicated towards musicals, especially Les Miserables and I am pleased to say that the passion still continues, to this day.

The Whilton Warblers, the choir that Linda Treacy has set up for the village, have a weekly rendition of Do You Hear The People Sing, which just so happens to be the song that my friend and I performed at the flash mob in London, in May. So there is no pressure on me, during singing this song at all.

As well as this, I have recently been to Warwick Castle, for a special Luna Cinema screening of the film. A sold out event, meant that myself and 1,199, other people, sat under the stars, well we would have done if it hadn't have been so over cast. We had to wait for complete darkness before they could show the film, however, organisers kept us all happy by offering us complimentary ice creams. We were incredibly lucky with the weather. There were the occasional spits and spots of rain at the beginning but that was it really.

Although, my friend and I did pray for rain, during appropriate scenes to fully experience the film. A few pyrotechnics went off, during the battle scenes that kept us all on our toes and the occasional picnic food to scatter, as their owner jumped. All in all 1,200 people enjoyed the film, although that should probably be 1,200, minus one as one lady had gone into labour during the film, much to the enjoyment of a jubilant crowd, who all cheered and whooped upon hearing the news.

I am having a break from short hand at the moment, a sort of summer holiday break. I've now finished all the theory behind it and am currently on 50 words per minute, which doesn't sound fast but believe me it is, when you first start. When I go back I will be building up my speed, before, finally and hopefully, sitting my exam at the end of the year.

By the time you read this I will most likely be walking around Disney's Magic Kingdom, in Florida, enjoying my holiday. However, before I left I discovered some very important and exciting news. When watching the trailer for Disney Pixar's Planes in the cinema, I was sure that I heard one of the characters being referred to as Rochelle. I did my research and believe it or not my ears had not failed me. Finally after 23 years of being a devoted Disney fan, I finally have a Disney character named after me.

I will hopefully see some of you when I return, either walking Sasha or at choir practice and I hope you all enjoy the rest of the summer and are prepared for cold Autumn and Winter ahead.

## Sasha's Column



Thank you everyone who has mentioned my column to me, in the past couple of months. It seems like I haven't done any naughty wandering for a while now. I'm guessing all of you are very alert on shutting doors, whenever I walk by.

Talking of walking, I had one of the best walks I have ever had. My dad had gone out for the day and as most of you know, my dad always takes me for walks. I had to wait for Rochelle and mum to get back from work before I could go on another walk. As soon as mum mentioned the word walk, I was excited and running around the house. It was poor Shell's turn to hold the lead and as soon as the back gate was open, I ran.

Mum was a little slow that day, so upon running I stopped every now and then to check that she was still there and she kept instructing me to run. So I did. I was having the best of fun. I don't usually run down to the bottom of the village, very often. However, Shell didn't seem to be having the best of fun.

She kept waving her arms in the air and running stiffly, before I would make her stop abruptly to check on Mum. According to Shell, running in flip flops is not the easiest task, she has now told me that if I ever plan to run again, I must give her full warning so that she can wear her trainers but I just think she's trying to compensate for the fact that she isn't as fast as me.

I now have a new friend that I see two days a week. Well, Shell says she is her friend but I am not sure about that. She pays me a lot of attention and often gives me her left-overs, although she tells me that I have to wait for her to finish before I can have them. I am going to have to have a word with Shell and see if she can convince our friend to give me them sooner.

Hope to see you all soon.

## NEWS FROM BRINGTON SCHOOL – July 2013

### WHAT A YEAR!

As I write this we have two more days left of the school year. It has been very busy and exciting, full of memorable moments including our Stunning Starts, Fantastic Finishes and topic related trips, the completion of the toilet refurbishment, Brington's got Talent and the 'golden' OFSTED letter. We are all looking forward to a few weeks rest before starting all over again in September!  
Thank you for your involvement in and support of our village school.

### CREATIVE CURRICULUM

We have really enjoyed this term's topic, it being a favourite of many of the children. They have learned so much about the seaside and related topics. The highlight was definitely our Fantastic Finish when we visited an inland beach and spent a wonderful day, paddling, playing on the beach and riding on a mega truck. The weather was beautiful, not too hot, but warm and sunny. The children were a joy to be with and a credit to themselves, the school and their families.



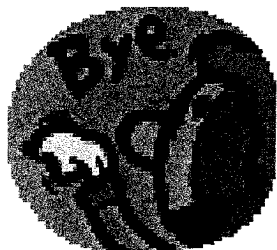
### ZECOS CHAMPION SCHOOL

We are delighted that we have been awarded a Zecos Champion School Award for our work on sustainability and eco projects. We have worked closely with the waste education and carbon reducing teams in the county on a range of activities with the children including designing an eco hotel, a cycle scalextric and various assemblies. Our main aim is to replace our oil boiler with a biomass one in the near future and we are at the feasibility study stage with this! We are hoping to involve the village community in this project as it develops so watch this space!

### NEW RECEPTION CHILDREN

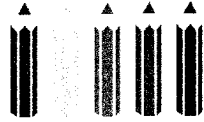
We are delighted to have at least 8 new reception children starting in September and they have had a number of visits to school to help their transition. We held a fabulous Teddy Bear's Picnic for these children and the members of the Brington and Whilton preschool, which was very popular, followed by three other visits. The new children are delightful and the existing reception and year 1 pupils were so kind and welcoming, it was a joy to see. Year 2 pupils spent some of these sessions including 'going up' day in class 2 and also had a great time and are all looking forward to September.

### GOODBYE!



We wish the year 6 leavers: Alice, Gwyneth, Stella, Dan, Finlay and Miles all the very best for the future and thank them for their hard work and commitment to school life. They are a credit to the school and have achieved a great deal over the past seven years including some very good SATs results this term!





# Brington and Whilton Pre-School

Another school year has drawn to a close and we finished the year off with a sports/presentation on the playing field at Little Brington.



Sports Day – Egg and Spoon race



Presentation of leavers

We only have sent three children to school this year and still have lots of children to start the new school year, but there are always places available so if you are looking for a pre-school for your child – get in touch. We take children from 2 years old or over and we offer excellent individual education and care. We are led by very well qualified and caring staff who engage with the children and get to know the children well in our friendly environment.

Our sessions are:

Monday 9.30am – 1.00pm including lunch  
Wednesday 9.30am – 1.00pm including lunch  
Friday 9.30am – 1.00pm including lunch

If you would like further information or would like to visit the pre-school please contact Jenny Holman 01604 770083.

What is a pumpkin's favourite sport?

*Squash*



What do you get if you divide the circumference of a pumpkin by its diameter?

*Pumpkin pi*



# Fun Stuff



As harvest time is on the horizon we have a scrummy treat for you...with a delicious blackberry muffin recipe, and whilst you are cooking why not try and work out the names of our mixed up mini-beasts!

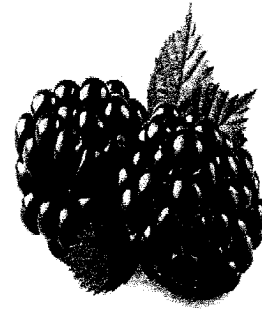
## Blackberry Muffin Recipe

### Ingredients:

300g Self-Raising Flour  
 100g Caster sugar  
 1 Egg  
 175ml milk  
 125ml vegetable oil  
 150g blackberries

### Equipment Required:

Muffin tray & cases  
 Chopping Board  
 Sieve  
 Bowls; 1 large, 1 small  
 Measuring jug  
 Cutlery



### How to Make:

Pre-heat the oven to 190°C, 170°C (fan assisted) or Gas mark 5.

Place the muffin cases into the muffin tray.

Sieve the flour into the large mixing bowl and add the caster sugar.

Measure oil in the measuring jug, and add the milk, gradually stir to mix them together.

Break the egg into the small bowl, and then add to the oil and milk, mix together.

Add the blackberries to the flour & sugar then add the liquid ingredients and stir lightly until 'just' mixed.

Spoon the mixture into the muffin cases, and then bake in the oven for 20-25 minutes until golden.

## Mini Beast Anagrams

Warmer hot	_____	Rappershogs	_____	Gearwi	_____
Nails	_____	Paws	_____	Piledlime	_____
Fangdrylo	_____	Redspi	_____	Badlyrid	_____

**The Whilton Newsletter is published quarterly and circulated free to every household within the parish boundary. The costs are met by the Parish Council.**

**The Editors are:**

- **Anthea Hiscock, Langton House, Main Street.  
Telephone: 01327 843319  
e-mail: [anthea.hiscock@tiscali.co.uk](mailto:anthea.hiscock@tiscali.co.uk)**
- **Karen Whitcombe: Inglenook, Main Street  
Telephone: 01327 843544  
e-mail: [karen.whitcombe@cummins.com](mailto:karen.whitcombe@cummins.com)**
- **Rochelle Lye, 1 Langton Rise  
Telephone: 844181  
e-mail: [rochelle@btinternet.com](mailto:rochelle@btinternet.com)**

**We would be very happy to welcome another member on to the editorial team. If you are interested, please contact any of us.**

**The Editors welcome material for the Newsletter. If possible, please send your contribution by e-mail. If you do not have a computer, the editors will be happy to type handwritten articles for you.**

**The next issue will be the Winter Edition, covering December 2013 – February 2014 . The last date for contributions will be 20<sup>th</sup> November 2013.**

**Whilton is also proud of its website – [www.whilton-village.net](http://www.whilton-village.net). This contains details of the organizations in the parish, previous Parish Council Minutes and Newsletters, latest news and a very comprehensive Picture Gallery.**

**If you would like to advertise your local business, flyers can be delivered to every household in the parish with the Newsletter at a small charge. For information please contact one of the editors.**

**WHAT'S ON IN WHILTON: Events take place in the Village Hall unless otherwise stated**

**REGULAR WEEKLY EVENTS**

<b>Sun weekly</b>		<b>Please watch the notice board for church services not included in the list below</b>
<b>Mon weekly</b>	<b>9.30 a.m.</b>	<b>Pre-school: for info: 01604 770083</b>
	<b>7.45 p.m.</b>	<b>Bell ringing in the church, for info: <a href="mailto:j.t@lineone.net">j.t@lineone.net</a></b>
<b>Tues weekly</b>	<b>7.15 p.m.</b>	<b>Whilton Warblers in the church, for info: <a href="mailto:lindahalltreacey@gmail.com">lindahalltreacey@gmail.com</a></b>
<b>Wed Weekly</b>	<b>9.30 a.m.</b>	<b>Pre-school</b>
<b>Fri Weekly</b>	<b>9.30 a.m.</b>	<b>Pre-school</b>

**OTHER EVENTS**

<b>Sun</b>	<b>1</b>	<b>Sept</b>	<b>10 a.m.</b>	<b>Benefice Sung Eucharist with Sunday School at Brinton</b>
<b>Sun</b>	<b>8</b>	<b>Sept</b>	<b>6 p.m.</b>	<b>Evening Praise at St Andrew's Church</b>
<b>Thurs</b>	<b>12</b>	<b>Sept</b>	<b>7.30 p.m.</b>	<b>Local History Society: The brook Project: Peopling the map</b>
<b>Sun</b>	<b>15</b>	<b>Sept</b>	<b>9.15 a.m.</b>	<b>Worship for All at St Andrew's Church</b>
<b>Tues</b>	<b>17</b>	<b>Sept</b>	<b>2.30 – 4 p.m.</b>	<b>Tuesday Chat</b>
<b>Sun</b>	<b>22</b>	<b>Sept</b>	<b>11 a.m.</b>	<b>Worship for All at St Andrew's Church</b>
<b>Sat</b>	<b>28</b>	<b>Sept</b>	<b>7 p.m.</b>	<b>Harvest celebration and supper</b>
<b>Wed</b>	<b>2</b>	<b>Oct</b>	<b>7.30 p.m.</b>	<b>Gardeners Association: The sex life of plants</b>
<b>Tues</b>	<b>22</b>	<b>Oct</b>	<b>2.30 – 4 p.m.</b>	<b>Tuesday Chat</b>
<b>Sun</b>	<b>10</b>	<b>Nov</b>	<b>6 p.m.</b>	<b>Remembrance Sunday service at St Andrew's Church</b>
<b>Tues</b>	<b>19</b>	<b>Nov</b>	<b>12.30 for 1 p.m.</b>	<b>Social Lunch</b>
<b>Wed</b>	<b>20</b>	<b>Nov</b>		<b>Last date for Newsletter contributions</b>
<b>Thurs</b>	<b>28</b>	<b>Nov</b>	<b>7.30 p.m.</b>	<b>Local History Society: Restoring the gardens At Canons Ashby.</b>