

THEFTWISE INSTALLATION INSTRUCTIONS

APPLYING THE STENCILS

Apply Stencils to the Body Panels - 8 in Total:

Stencils should not be visible unless doors, hood or trunk are open.

Doors - Apply 2

Hood - Apply 1

Trunk Lid - Apply 1

Front Fender - Apply 2

Quarter Panels - Apply 2

Stencils should be applied to painted metal surface, free of grease, oil or wax.

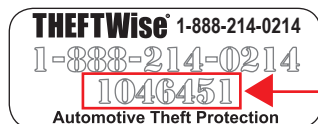
- Clean surface with Isopropyl alcohol
- Gently peel label from backing
- Position over area to be applied
- Press label to area, remove wrinkles or bubbles and press firmly

Apply Window Warning Stickers - 2 in Total:


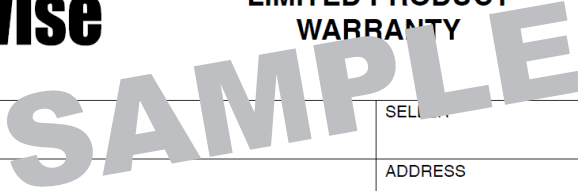
Apply on the inside driver and passenger door window above the locks.

IMPORTANT

THE SERIAL NUMBER ON THE STENCIL MUST BE WRITTEN ON THE CONTRACT.



This is the Serial # that goes HERE

		LIMITED PRODUCT WARRANTY	Provide Serial # Form Security Label HERE
		TWTD	
WARRANTY HOLDER / YOU	SELECTED ACCOUNT NUMBER		
ADDRESS	ADDRESS		

Wise F&I LLC | Administration America LLC

1670 Fenpark Drive, Fenton, MO 63026 | Phone: 800-849-9559 | www.WiseFandI.com