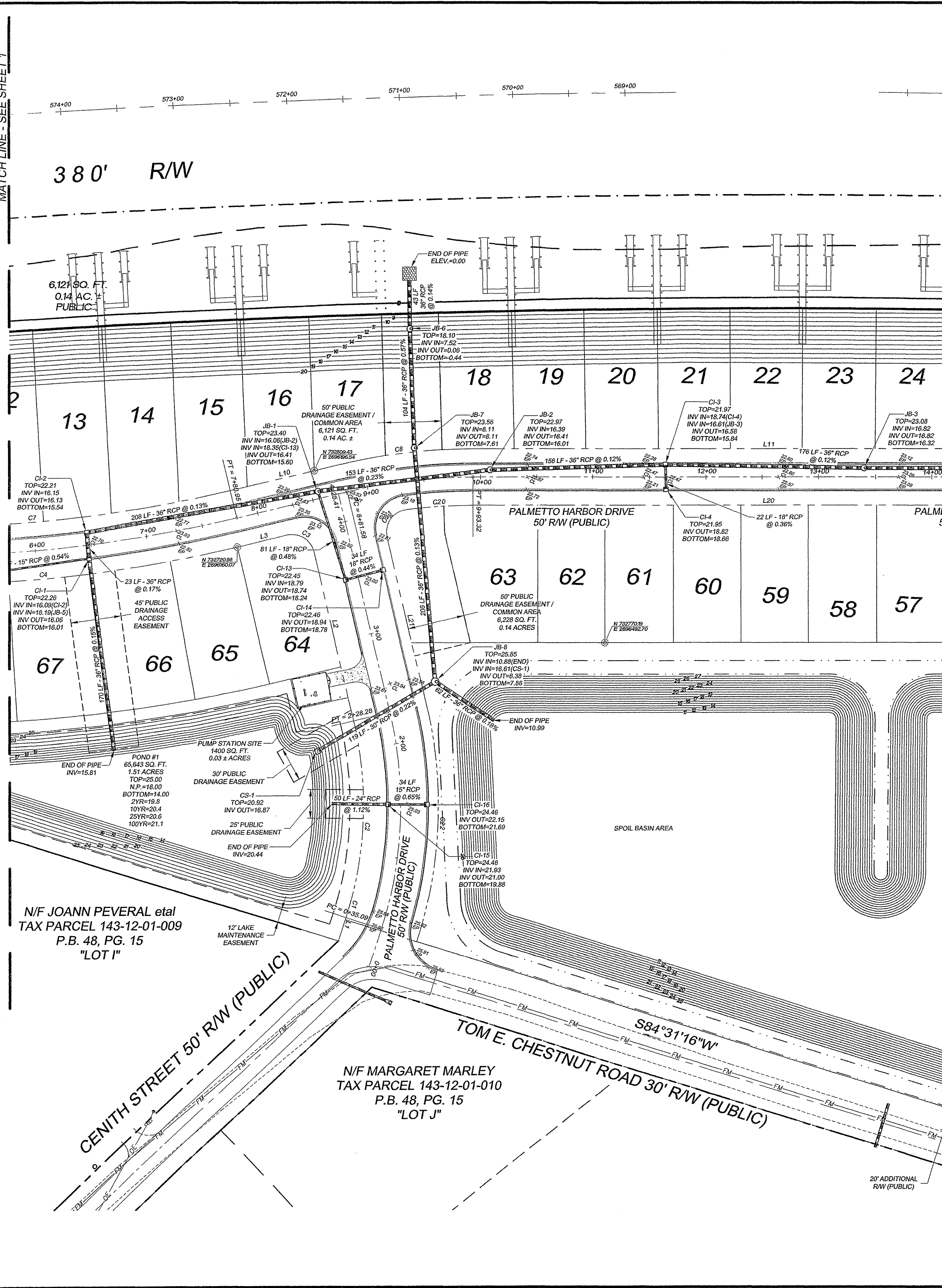


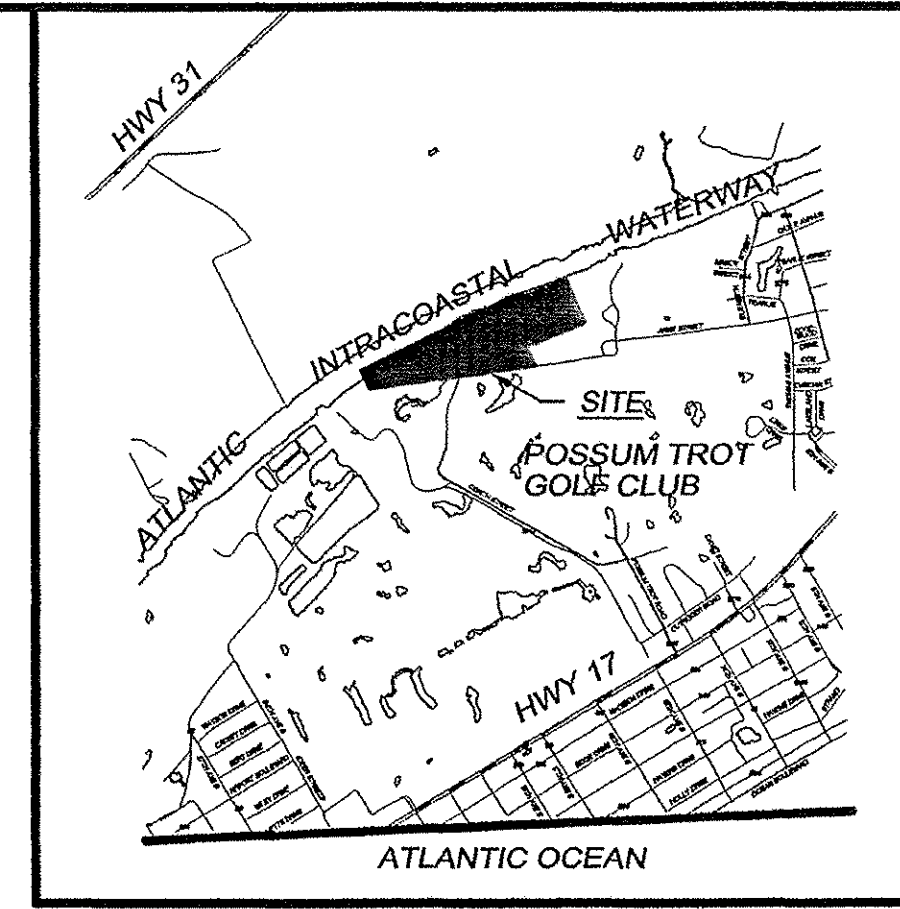
MATCH LINE - SEE SHEET 1

MATCH LINE - SEE SHEET 3

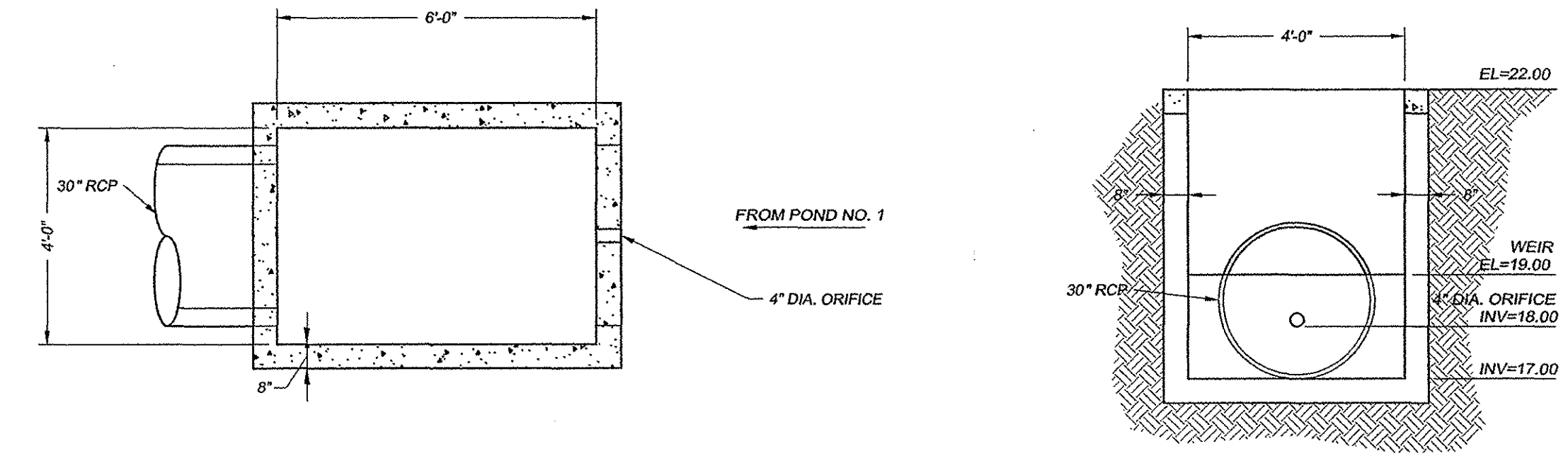


CURVE	LENGTH	RADIUS	TANGENT	BEARING	CHORD	DELTA
C1	13.16	320.00	8.58	N85°54'54"W	13.15	2°21'20"
C2	161.97	320.00	82.76	N21°35'35"W	160.25	29°00'02"
C3	31.42	20.00	20.00	N91°08'36"W	28.28	90°00'00"
C4	358.26	1225.00	180.42	N62°17'06"E	356.98	16°45'23"
C5	152.94	1150.00	76.58	S66°51'12"W	152.83	7°37'12"
C6	197.21	1200.00	98.83	S65°57'18"W	196.99	9°24'58"
C7	343.63	1175.00	173.05	N62°17'06"E	342.41	16°45'23"
C8	117.58	625.00	59.05	S69°34'33"W	117.30	19°29'18"
C9	123.33	3025.00	61.68	S68°24'47"W	123.32	2°20'10"
C10	190.79	125.00	119.56	N68°41'34"W	172.80	87°27'07"
C11	133.79	50.00	210.83	S33°45'38"E	97.30	153°18'59"
C12	38.66	34.50	22.35	N09°57'55"E	37.51	65°51'52"
C13	114.47	75.00	71.74	N68°41'34"W	103.68	87°27'07"
C14	32.31	20.00	20.91	S23°18'28"W	28.91	92°32'33"
C15	27.24	34.50	14.37	S45°38'12"E	26.54	45°14'23"
C16	236.04	50.00	49.58	N87°01'59"E	70.41	270°28'46"
C17	27.24	34.50	14.37	N00°20'49"W	26.54	45°14'23"
C18	30.63	20.00	19.13	N68°41'34"W	27.65	87°27'07"
C19	121.29	2975.00	60.66	S68°24'47"W	121.29	2°20'10"
C20	58.77	455.00	29.43	S63°32'41"W	58.73	7°24'02"
C21	33.49	20.00	22.19	S11°52'32"W	29.71	95°56'16"
C22	211.25	386.00	108.34	N20°24'55"W	208.62	31°21'22"

LINE	LENGTH	BEARING
L1	1.95	N04°44'14"W
L2	152.14	S36°03'36"E
L3	39.62	N53°54'24"E
L4	197.61	N70°39'47"E
L5	77.83	S05°28'19"E
L6	143.33	S84°31'40"W
L7	73.34	N03°26'20"W
L8	100.41	N81°44'50"E
L9	197.61	N70°39'47"E
L10	100.62	N53°54'24"E
L11	525.34	N67°14'42"E
L12	552.58	N69°34'52"E
L13	232.60	S22°59'01"E
L14	62.22	N69°34'52"E
L15	103.62	S22°59'01"E
L16	231.96	N69°34'52"E
L17	40.22	S22°59'01"E
L18	44.22	N22°58'01"W
L19	230.53	N67°14'42"E
L20	525.34	N67°14'42"E
L21	149.60	S36°03'36"E



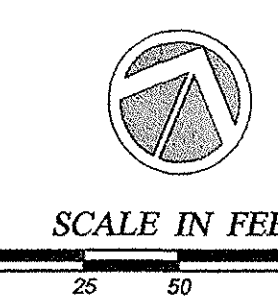
LOCATION MAP



POND #1 CONTROL STRUCTURE (STRUCTURE NO. CS-1) SCALE: N.T.S.

FROM STRUCTURE	TO STRUCTURE	DISTANCE IN L.F.	SLOPE IN %	MATERIAL	SIZE
CS-8	CS-7	22	0.50	RCP	18"
CS-7	CS-4	240	0.22	RCP	24"
CS-12	CS-11	22	0.73	RCP	15"
CS-11	CS-4	93	0.51	RCP	18"
CS-4	CS-5	243	0.17	RCP	30"
CS-6	CS-5	23	0.52	RCP	15"
CS-5	CS-3	326	0.15	RCP	36"
CS-3	CS-3	176	0.15	RCP	36"
CS-4	CS-3	22	0.36	RCP	18"
CS-3	CS-2	156	0.13	RCP	36"
CS-2	CS-1	153	0.29	RCP	36"
END OF PIPE	CS-1	170	0.12	RCP	36"
CS-14	CS-13	34	0.44	RCP	18"
CS-13	CS-1	81	0.48	RCP	18"
CS-1	CS-2	208	0.18	RCP	30"
CS-2	CS-1	23	0.17	RCP	30"
CS-1	END OF PIPE	170	0.12	RCP	36"
CS-10	CS-9	22	0.45	RCP	15"
CS-9	CS-5	379	0.35	RCP	15"
CS-5	CS-1	124	0.54	RCP	15"
CS-1	CS-11	288	0.15	RCP	30"
CS-11	CS-10	133	0.23	RCP	30"
CS-10	CS-9	94	2.02	RCP	30"
CS-9	END OF PIPE	44	0.23	RCP	30"
CS-16	CS-15	34	0.65	RCP	15"
CS-15	END OF PIPE	50	1.12	RCP	24"
END OF PIPE	CS-8	62	0.18	RCP	36"
CS-1	CS-7	119	0.22	RCP	30"
CS-8	CS-7	208	0.13	RCP	36"
CS-7	CS-6	104	0.57	RCP	36"
CS-6	END OF PIPE	43	0.14	RCP	36"

STRUCTURE NUMBER	RIM	INV. IN	INV. OUT	BOTTOM
CS-8	22.08		19.68	18.75
CS-7	22.07	19.57	18.09	16.57
CS-4	23.38	18.55(CS-7) 18.38(CS-11)	18.03	17.53
CS-12	22.00		19.16	19.14
CS-11	22.11	19.00	16.85	18.57
CS-5	21.67	17.64(CS-4) 19.40(CS-6)	17.30	16.88
CS-6	21.93		19.52	19.36
CS-3	23.08	16.82	16.82	16.32
CS-3	21.97	18.74(CS-4) 18.61(CS-3)	16.58	15.84
CS-4	21.95		18.32	18.68
CS-2	22.97	16.39	16.41	16.01
CS-1	23.40	18.06(CS-2) 18.13(CS-13)	16.41	15.60
CS-1	22.26	18.08(CS-2) 18.15(CS-5)	16.06	16.01
CS-2	22.21	16.15	16.13	15.54
CS-13	22.45	18.79	18.74	18.24
CS-14	22.46		18.94	18.78
CS-10	22.24		19.95	18.85
CS-9	22.28	19.85	18.85	18.30
CS-5	23.72	18.53	18.86	18.00
CS-1	22.43		17.21	16.46
CS-11	23.39	16.78	16.58	16.01
CS-10	21.03	16.28	15.23	14.46
CS-9	19.70	13.33	0.06	-0.51
CS-16	24.46		22.15	21.69
CS-15	24.46	21.93	21.00	19.88
CS-1	20.92		16.87	
CS-8	25.85	10.88(END) 16.61(CS-1)	8.38	7.88
CS-7	23.56	8.11	8.11	7.61
CS-6		7.52	0.09	-0.44

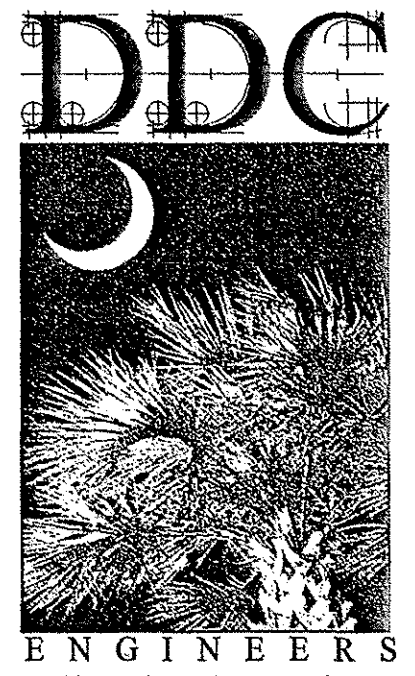


- NOTES:  
 1. ALL ROADWAYS & DRAINAGE ARE PUBLIC  
 2. ALL LAKES & PONDS ARE TO BE OWNED & MAINTAINED BY THE H.O.A.  
 3. SURVEY DATUM USED WAS NGVD89.

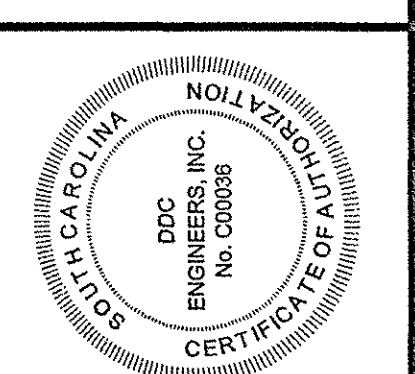
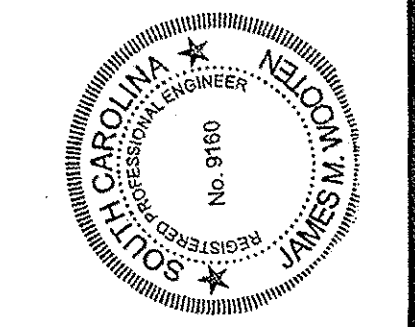
DEVELOPER: WATERWAY INVESTORS, LLC  
 801 2ND AVENUE NORTH  
 NORTH MYRTLE BEACH, SC 29582  
 PHONE: (843) 450-5335  
 CONTACT PERSON: RUSSELL BURGESS

GENERAL CONTRACTOR: A.O. HARDEE AND SONS  
 55 PARK STREET EXT.  
 LITTLE RIVER, SC 29566  
 PHONE: (843) 249-1264  
 CONTACT PERSON: DONNIE RAY

PARENT TMS# 143-00-01-17 AND 034



DDC ENGINEERS  
 Consulting Engineers, Surveyors, Planners,  
 Landscape Architects & Environmentalists  
 1298 Professional Dr., Myrtle Beach, SC 29577  
 Phone: (843) 692-3200 Fax: (843) 692-3210



NO.	DATE	REVISION DESCRIPTION	BY

**ROAD AND DRAINAGE RECORD DRAWING**

PALMETTO HARBOR  
 Horry County, South Carolina

PREPARED FOR: WATERWAY INVESTORS, LLC

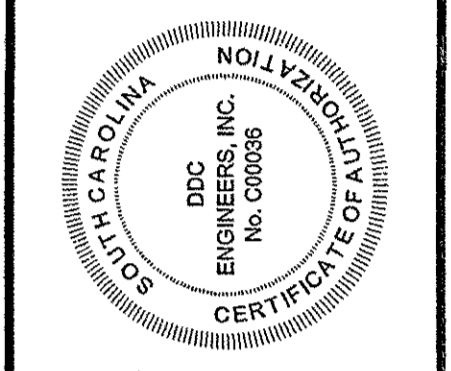
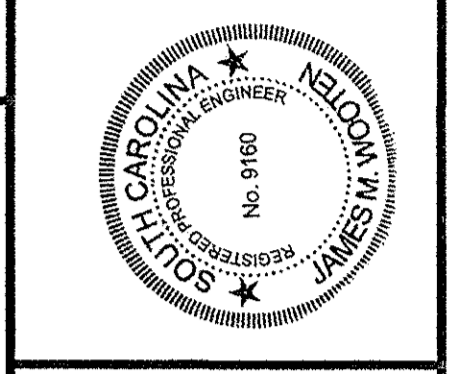
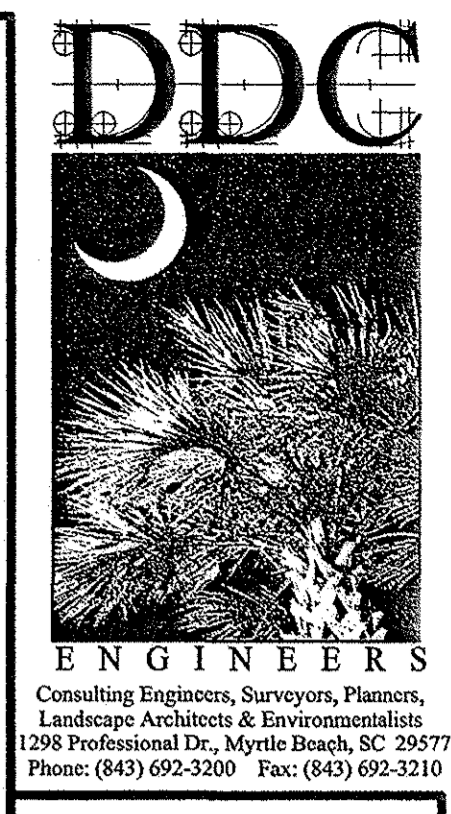
SCALE: 1"=50'

DATE: 07/27/04  
 DESIGNED BY: TSK  
 DRAWN BY: PED  
 APPROV. BY: TSK  
 PROJECT NO.: 04.04521E

**2 OF 3**

FILE NO.:





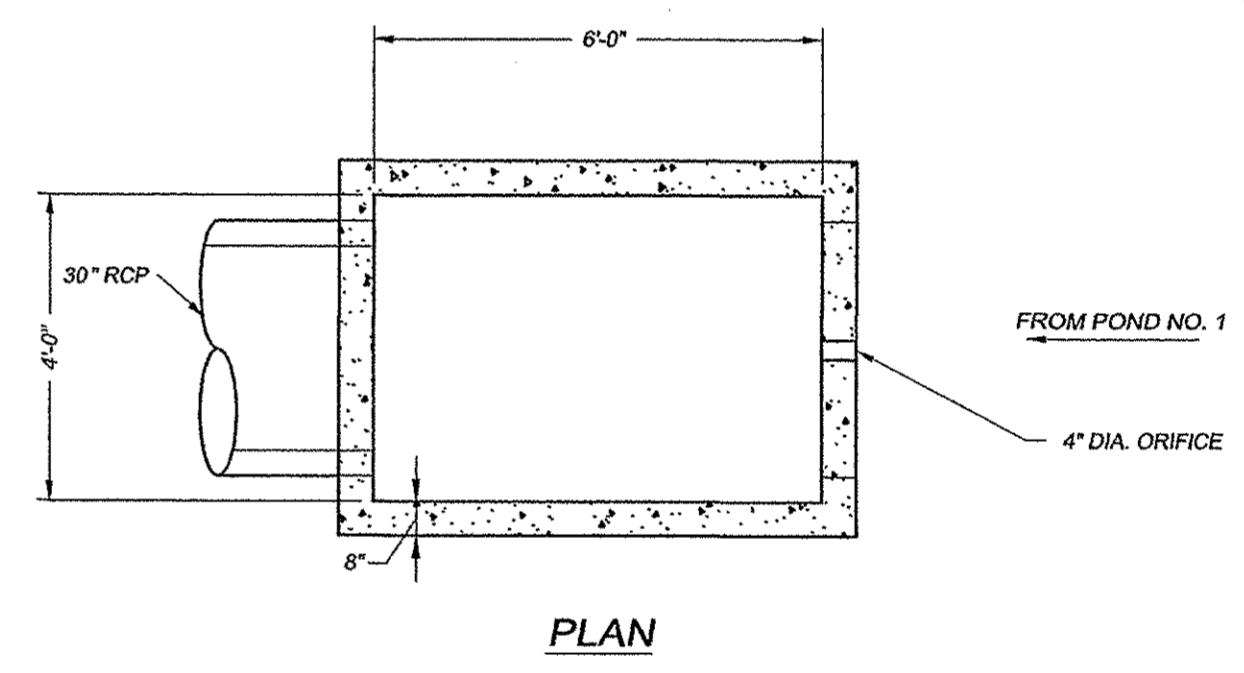
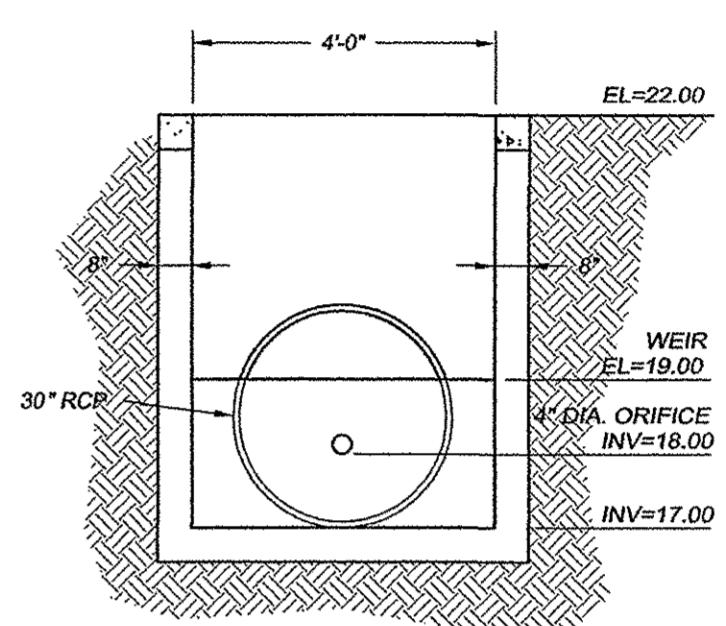
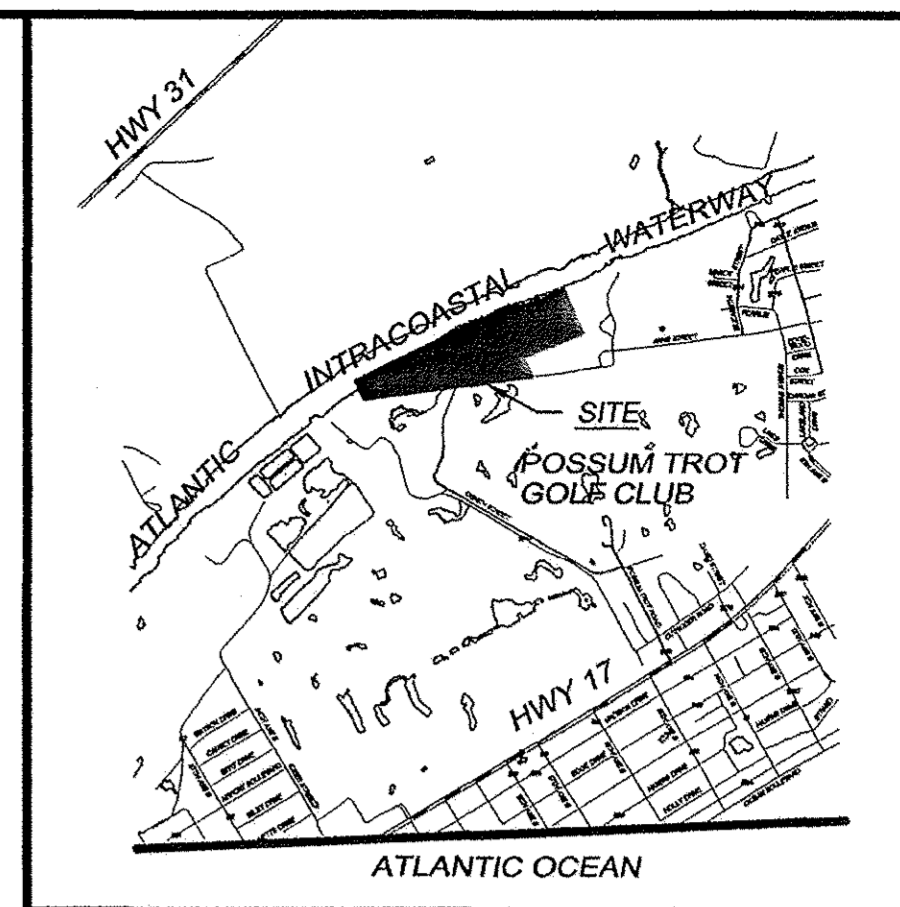
NO.	DATE	REVISION DESCRIPTION	BY

**ROAD AND DRAINAGE RECORD DRAWING**

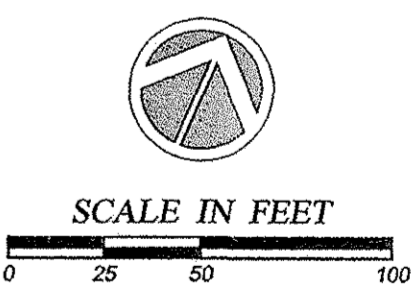
**PALMETTO HARBOR**  
 Horry County, South Carolina

PREPARED FOR: WATERWAY INVESTORS, LLC

SCALE: 1"=50'  
 DATE: 07/27/04  
 DESIGNED BY: TSK  
 DRAWN BY: PED  
 APPROV. BY: TSK  
 PROJECT NO.: 04.04521E  
**1 OF 3**  
 FILE NO.:



**POND #1 CONTROL STRUCTURE**  
 (STRUCTURE NO. CS-1)  
 SCALE: N.T.S.

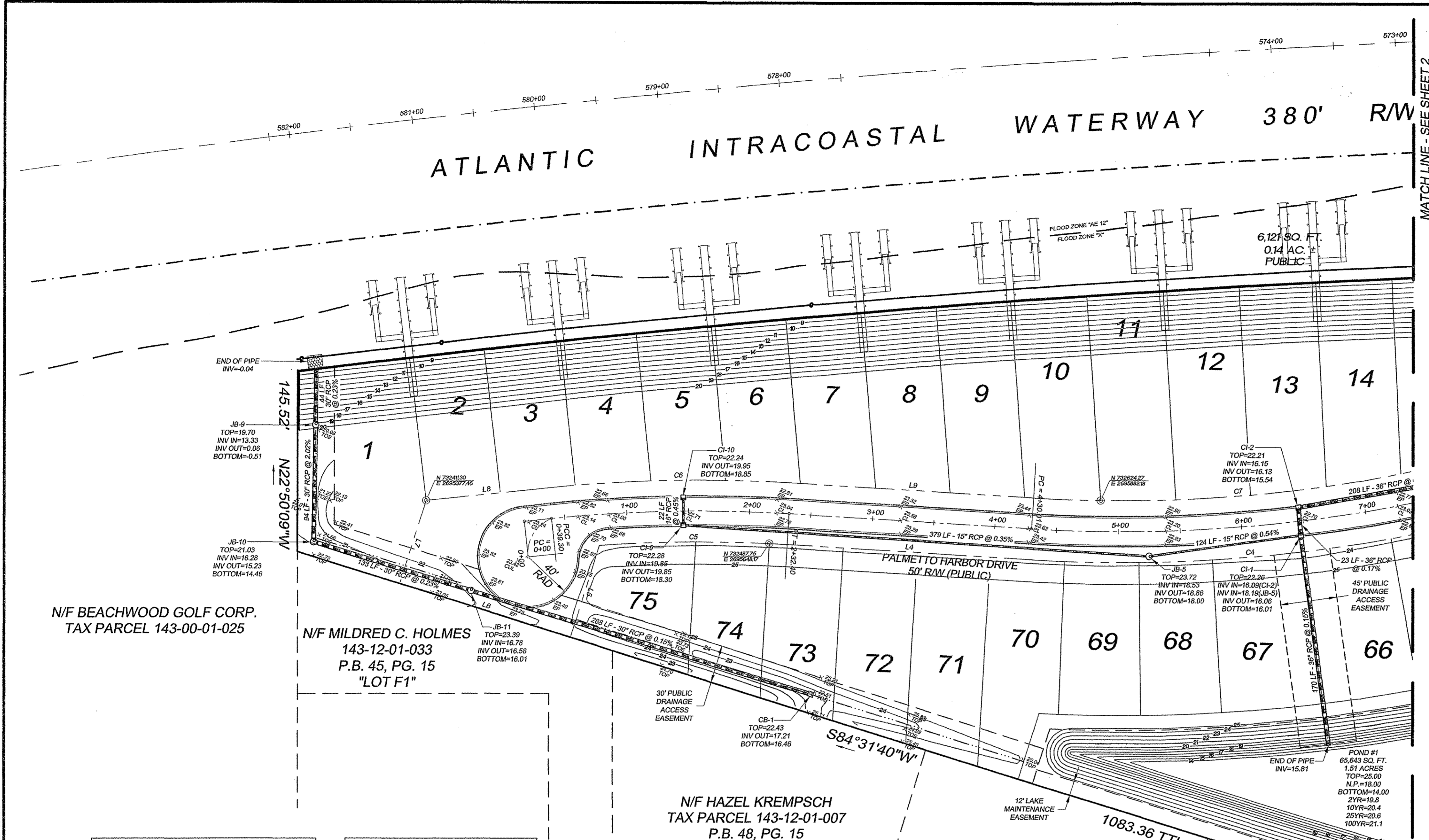


**NOTES:**  
 1. ALL ROADWAYS & DRAINAGE ARE PUBLIC  
 2. ALL LAKES & PONDS ARE TO BE OWNED & MAINTAINED BY THE H.O.A.  
 3. SURVEY DATUM USED WAS NGVD29.

**DEVELOPER:** WATERWAY INVESTORS, LLC  
 801 2ND AVENUE NORTH  
 NORTH MYRTLE BEACH, SC 29582  
 PHONE: (834) 450-5335  
 CONTACT PERSON: RUSSELL BURGESS

**GENERAL CONTRACTOR:** A.O. HARDEE AND SONS  
 55 PARK STREET EXT.  
 LITTLE RIVER, SC 29566  
 PHONE: (843) 249-1264  
 CONTACT PERSON: DONNIE RAY

PARENT TMS# 143-00-01-017 AND 034



FROM STRUCTURE	TO STRUCTURE	DISTANCE IN L.F.	SLOPE IN %	MATERIAL	SIZE
CI-8	CI-7	22	0.50	RCP	18"
CI-7	JB-4	240	0.22	RCP	24"
CI-12	CI-11	22	0.73	RCP	15"
CI-11	JB-4	93	0.51	RCP	18"
JB-4	CI-5	243	0.17	RCP	30"
CI-6	CI-5	23	0.52	RCP	15"
CI-5	JB-3	328	0.15	RCP	36"
JB-3	CI-3	176	0.15	RCP	36"
CI-4	CI-3	22	0.36	RCP	18"
CI-3	JB-2	158	0.13	RCP	36"
JB-2	JB-1	153	0.29	RCP	36"
END OF PIPE	CI-1	170	0.12	RCP	36"
CI-14	CI-13	34	0.44	RCP	18"
CI-13	JB-1	81	0.46	RCP	18"
JB-1	CI-2	208	0.18	RCP	36"
CI-2	CI-1	23	0.17	RCP	36"
CI-1	END OF PIPE	170	0.12	RCP	36"
CO-10	CI-9	22	0.45	RCP	15"
CI-9	JB-5	379	0.35	RCP	15"
JB-5	CI-1	124	0.54	RCP	15"
CB-1	JB-11	288	0.15	RCP	30"
JB-11	JB-10	133	0.23	RCP	30"
JB-10	JB-9	94	2.02	RCP	30"
JB-9	END OF PIPE	44	0.23	RCP	30"
CI-16	CI-15	34	0.65	RCP	15"
CI-15	END OF PIPE	50	1.12	RCP	24"
END OF PIPE	JB-8	62	0.18	RCP	36"
CS-1	JB-8	119	0.22	RCP	30"
JB-8	JB-7	206	0.13	RCP	36"
JB-7	JB-6	104	0.57	RCP	36"
JB-6	END OF PIPE	43	0.14	RCP	36"

STRUCTURE NUMBER	RIM	INV. IN	INV. OUT	BOTTOM
CI-8	22.08		19.68	18.75
CI-7	22.07	19.57	19.09	18.57
JB-4	23.36	18.56(CI-7) 18.38(CI-11)	18.03	17.53
CI-12	22.00		18.16	18.14
CI-11	22.11	19.00	18.85	18.57
CI-5	21.87	17.84(JB-4) 18.40(CI-6)	17.30	16.88
CI-6	21.83		18.52	18.36
JB-3	23.08	16.82	16.82	16.32
CI-3	21.97	16.74(CI-4) 16.61(JB-3)	16.58	15.84
CI-4	21.95		18.32	18.66
JB-2	22.97	16.39	16.41	16.01
JB-1	23.40	16.08(JB-2) 18.35(CI-13)	16.41	15.60
CI-1	22.26	18.08(CI-2) 18.10(CI-5)	16.06	16.01
CI-2	22.21	16.15	16.13	15.54
CI-13	22.45	18.79	18.74	18.24
CI-14	22.46		18.94	18.78
CI-10	22.24		19.95	18.85
CI-9	22.28	19.85	18.85	18.30
JB-5	23.72	18.53	18.86	18.00
CB-1	22.43		17.21	16.46
JB-11	23.39	16.78	16.58	16.01
JB-10	21.03	16.26	15.23	14.46
JB-9	19.70	13.33	0.06	-0.51
CI-16	24.46		22.15	21.69
CI-15	24.48	21.83	21.00	19.88
CS-1	20.82		16.67	
JB-8	25.85	16.80(ENDB) 16.61(CS-1)	8.36	7.88
JB-7	23.66	8.11	8.11	7.61
JB-6		7.52	0.06	-0.44

CURVE	LENGTH	RADIUS	TANGENT	BEARING	CHORD	DELTA
C1	13.16	320.00	6.58	N05°54'54"W	13.15	2°21'20"
C2	161.97	320.00	82.76	N21°35'35"W	160.25	29°00'02"
C3	31.42	20.00	20.00	N81°05'36"W	28.28	90°00'00"
C4	358.28	1225.00	180.42	N62°17'08"E	358.38	16°45'23"
C5	152.94	1150.00	76.58	S86°51'27"W	152.83	7°37'12"
C6	197.21	1200.00	98.83	S85°57'18"W	196.59	9°24'58"
C7	343.63	1175.00	173.05	N62°17'08"E	342.41	16°45'23"
C8	117.56	505.00	59.05	S80°34'33"W	117.30	13°20'18"
C9	123.33	3025.00	61.68	S88°24'47"W	123.32	2°20'10"
C10	190.79	125.00	119.56	N66°41'34"W	172.80	87°27'07"
C11	133.79	50.00	210.63	S33°45'38"E	97.30	153°18'59"
C12	39.66	34.50	22.35	N09°57'37"E	37.51	65°51'52"
C13	114.47	75.00	71.74	N66°41'34"W	103.68	87°27'07"
C14	32.31	20.00	20.91	S23°16'26"W	28.91	92°32'53"
C15	27.24	34.50	14.37	S45°38'12"E	26.54	45°14'23"
C16	236.04	50.00	49.58	N67°01'59"E	70.41	270°26'46"
C17	27.24	34.50	14.37	N00°20'49"W	26.54	45°14'23"
C18	30.53	20.00	19.13	N68°41'34"W	27.65	87°27'07"
C19	121.20	2975.00	60.66	S88°24'47"W	121.29	2°20'10"
C20	58.77	455.00	29.43	S63°32'41"W	58.73	7°24'02"
C21	33.49	20.00	22.19	S11°52'32"W	29.71	95°56'16"
C22	211.25	386.00	108.34	N20°24'55"W	208.62	31°21'22"

LINE	LENGTH	BEARING
L1	1.95	N04°44'14"W
L2	162.14	S36°05'36"E
L3	38.62	N53°54'24"E
L4	197.61	N70°39'47"E
L5	17.83	S05°28'19"E
L6	145.33	S84°31'07"W
L7	70.34	N05°28'20"W
L8	100.41	N61°14'50"E
L9	197.61	N70°39'47"E
L10	100.62	N53°54'24"E
L11	526.34	N67°14'42"E
L12	652.58	N69°34'52"E
L13	232.80	S22°58'01"E
L14	62.22	N69°34'52"E
L15	103.52	S22°58'01"E
L16	231.98	N69°34'52"E
L17	48.22	S22°58'01"E
L18	44.22	N22°58'01"W
L19	230.53	N69°34'52"E
L20	525.34	N67°14'42"E
L21	149.80	S36°05'36"E

PROJECT NO. 04.04521E, DATE: 07/27/04, DRAWN BY: PED, CHECKED BY: TSK, SCALE: 1"=50', SHEET NO. 1 OF 3