

Grade 2 Math CSA Q1 Review

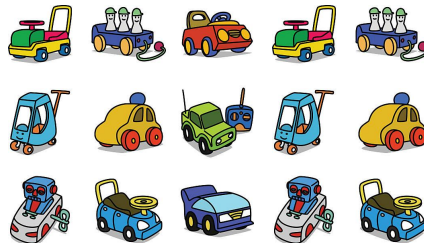
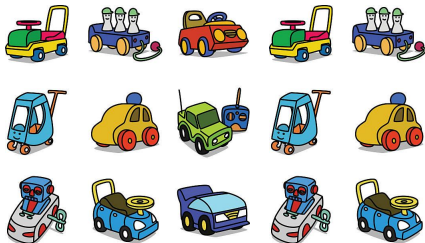
Name _____

Date: _____

- 1** Kyree picked 14 apples.
She put some in a bag for her brother.
Now, Kyree has 7 apples.
How many apples did she give to her brother?

A 21 **C** 13
B 17 **D** 7

- 2** Tim arranged his cars into groups of five.



How many cars does Tim have?

A 2 **C** 20
B 15 **D** 30

- 3** Tyler is skip counting backwards by tens.

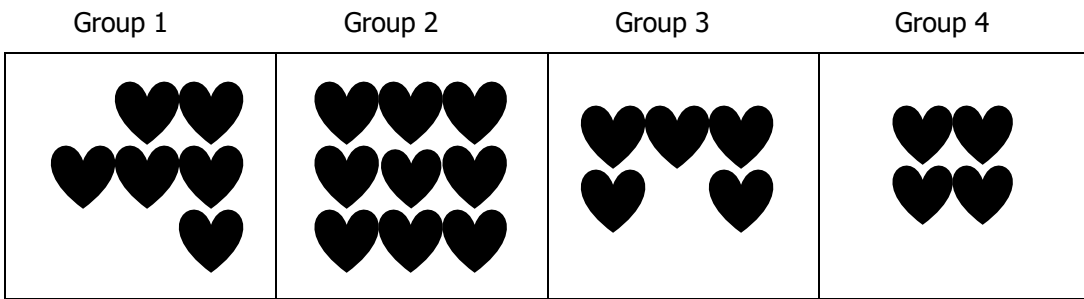


70, 60, 50, ...

Which three numbers will he say next if he is correctly skip counting backwards.

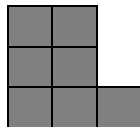
A 40, 50, 60 **C** 40, 30, 20
B 40, 35, 30 **D** 40, 45, 50

4 Which two groups show an even amount?



- A** Group 1 and Group 2 **C** Group 3 and Group 4
B Group 2 and Group 3 **D** Group 4 and Group 1

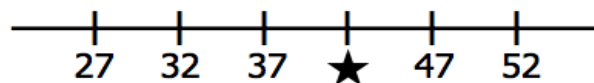
5 Look at the model of shaded squares below.



Which of the following is true?

- A** This model shows that 5 is even.
B This model shows that 6 is odd.
C This model shows that 7 is odd.
D This model shows that 9 is even.

6 Look at the number line.



The ★ stands for a number.

What number does the star stand for?

- A** 35 **C** 40
B 38 **D** 42

7 Look at the pattern of numbers.

2, 5, 8, 11, 14, 17, 20

Which of these shows the same kind of pattern?

- A** 4, 6, 8, 10, 12, 14, 16
- B** 2, 7, 12, 17, 22, 27, 32
- C** 6, 8, 10, 12, 14, 16, 18
- D** 7, 10, 13, 16, 19, 22, 25

8 Look at the shapes.



Which shows this same repeating pattern using numbers?

- A** 1 1 2 2 1 1 2 2 1 1
- B** 1 1 2 2 3 1 1 2 2 3
- C** 1 1 2 3 1 1 2 3 1 1
- D** 1 2 3 4 1 2 3 4 1 2

9 What is the rule for the pattern below?

2	5	8	11	14	17
----------	----------	----------	-----------	-----------	-----------

- A** add 2
- B** add 3
- C** add 4
- D** add 5

10 This is a group of ten squares.



**Cam has 5 of these groups of squares.
How many squares does Cam have?**

- A** 10
- B** 30
- C** 50
- D** 60