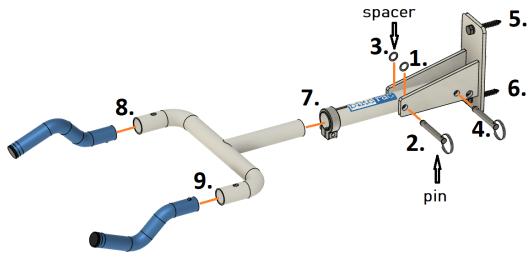


## Assembly Instructions

**Tools needed for wood stud mount:**  
**1/8" wood drill bit, power drill,**  
**10mm wrench.**



**Follow the numbers in the picture above.**

**\*Step 1. to 4. are pre-assembled.**

**1.** Place the spacer in line with the hole, between the plate and tube.

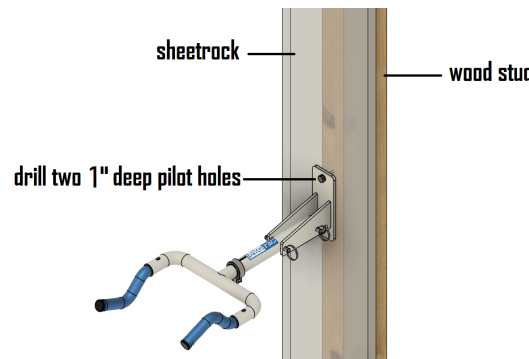
**2.** Push the front pin through the hole, the spacer and the tube.

**3.** Place the second spacer, push the pin through the second spacer and the second hole.

**Tip:** Use a toothpick or similar tool to place the second spacer as you push the pin through.

**4.** Push the rear pin through the hole, tube holes, and second hole.

**Note:** Once the front pin is assembled, it is intended to stay assembled, do not pull it out.



**Tip:** Choose the general location and height to mount the bike rac. Consider the width and height of the bike you will rack. Do you want to store items below the bike? Is the bike being racked above furniture, or other items?

**5.** Locate the center of the wall stud (use a stud finder), mark the two hole locations using the wall bracket holes as locators, **use a 1/8" wood drill bit to drill two pilot holes 1" deep**, use a 10mm wrench to tighten the top screw loosely.

**Warning:** do not mount to sheetrock (or drywall) only, the sheetrock will fail. Do mount to a wood stud, steel stud, masonry, beam, or other secure material.

**Note:** A steel stud or masonry requires special fasteners and drills. Consult google or a local hardware store.

**6.** Use a 10mm wrench to tighten both screws securely.

**7.** Insert the fork tube and tighten the clamp loosely.

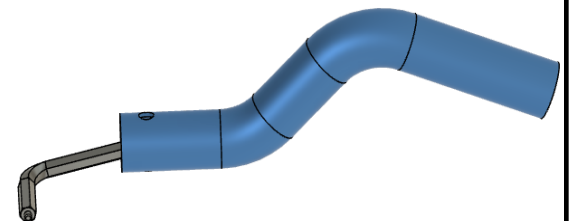
**8.-9.** Insert the prongs, rotate until the button pin engages with the slot.

**10.** Adjust the bike rac to a position you think is close to the position you want, use the allen wrench to tighten the clamp.

**11.** Mount your bike on the bike rac. Dismount to adjust the positions of the bike rac.

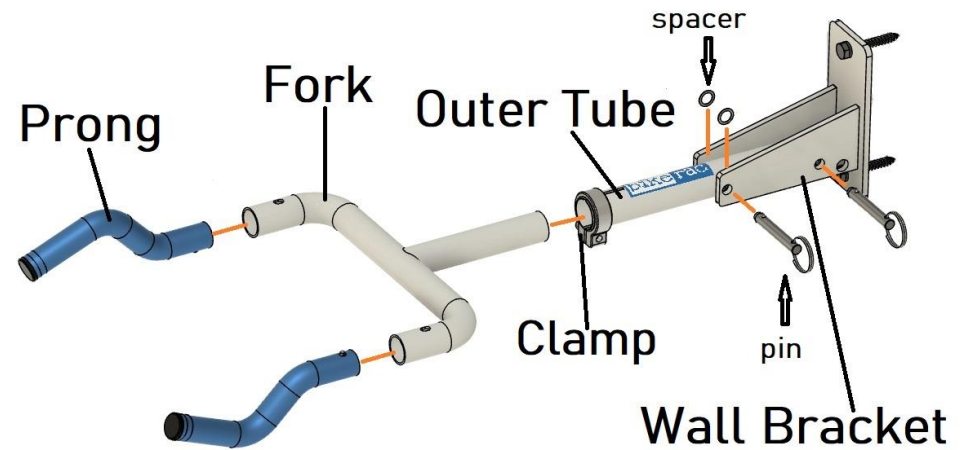
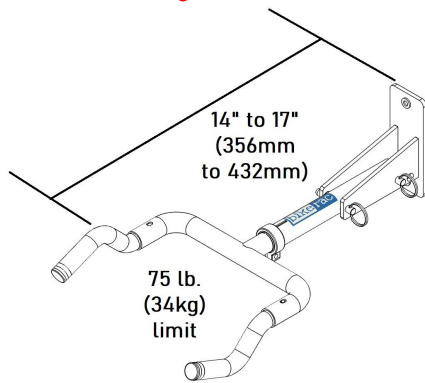
**12.** Adjust the clamp tension tighter if the bike is rotating.<sup>1</sup>

**Tip:** If you are struggling to tighten the clamp with the allen wrench, you can use one of the prongs as an extra lever on the allen wrench. Slip the open end of the prong over the allen wrench, and tighten.



<sup>1</sup> Bike rac is designed to allow a mounted bike to rotate if pressure, other than the weight of the bike, is applied to the bike. This is intended to help prevent the bike rac from being pulled from the surface it is mounted to.

Do not extend beyond 17".



**STANDARD ONE YEAR MANUFACTURER WARRANTY:** The manufacturer warrants this product to be free from defects in workmanship and materials, under normal use and conditions, for a period of one (1) year from the original invoice date. Shipping and handling fees are to be paid for by the customer. The manufacturer agrees, at its option during the warranty period, to repair defects in material or workmanship or to furnish a repaired or refurbished product of equal value in exchange without charge (except for a fee for shipping, handling, packing, and return postage, which will be incurred by the customer). Such repair or replacement is subject to verification of the defect or malfunction and proof of purchase as confirmed by showing the original dated sales receipt.

#### WARRANTY LIMITATIONS

This warranty does not include:

- Any condition resulting from other than ordinary wear or any use for which the product was not intended
- Any condition resulting from incorrect or inadequate maintenance or care
- Damage resulting from misuse, abuse, negligence, accidents or shipping damage
- Dissatisfaction due to buyer's remorse
- Normal wear and tear
- Damages incurred during transportation
- Damages incurred during assembly or maintenance
- Any used, previously displayed items

**CLAIM PROCEDURES:** Claims for defects must be made within ONE year from invoice date. Claims for missing parts must be made within 60 calendar days after the product is received. Any claim for defects returns must be packed in original packaging. Pictures are required to claim defects, along with a copy of the original invoice. If the claim is justified, the item(s) or part(s) will be repaired or replaced or a credit will be issued. It is our policy to replace parts whenever possible.