

Volume

1

MASTER PRESS MP-20

Users Guide

REV E, 1-18-18

MASTER PRESS

Master Press
2985 Theatre Dr.
Paso Robles Ca. 93446
Phone 805-226-7332 • Fax 805-226-8753

Table of Contents

Setup	2
Basic operation	4
Profiles	5
Manual control	6
Setup Tab	7
Live Mode, import/export profiles	8-10
Specifications	11

Setup: MP-20 Rosin Press



Front view

1. Start switches, BOTH switches must be pressed for 2 seconds to start the press, the top cover MUST be closed as well, these are safety features on the MP-20
2. Emergency stop, this is a PUSH switch, it will turn off all power and open the jack in an emergency.
3. Speed control, this varies the air flow to the jack, turning it IN reduces the speed, In future models this will be automated by software.

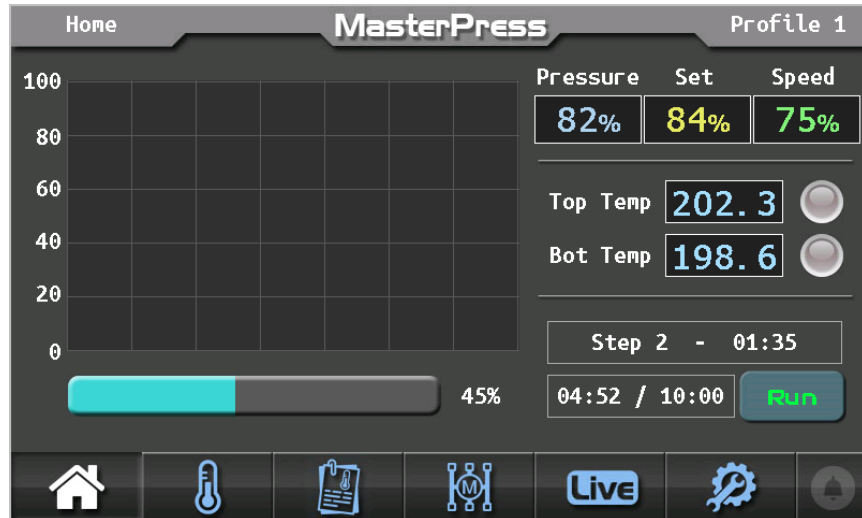
Back View



1. Power cord entry (120VAC)
2. Power switch (10-amp fuse)
3. Air inlet 100PSI from compressor

Basic Operation

1. Insert power cord into power entry port, connect 100Psi air to the air inlet port , turn on power switch.
2. After 5 seconds touch the screen anywhere the Home page will appear.



Home -----Temps----Profiles----Manual-----Live-----Settings

3. Go to the profiles page to select a profile then load it (the name will be in the top right corner)

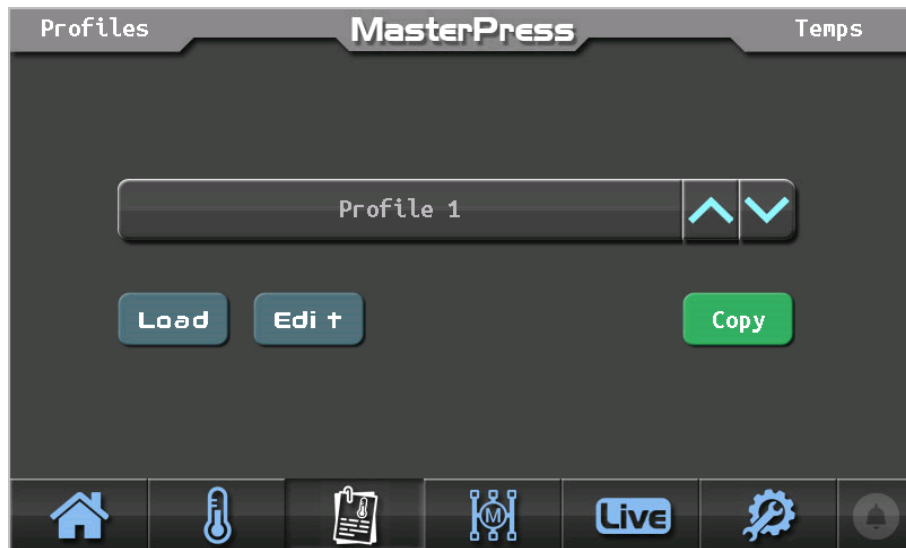


Go back to the home page , you can only run a profile from the HOME PAGE

4. Close the **top cover**, Press both **START** switches at the same time, hold for 2 sec. this will START the press and run the selected profile.
5. When the profile is complete the press will stop and open the jack

6. Open the top cover and Remove the material you just pressed then ENJOY.

Profiles:



1. Use the up/down arrows to select the profile
2. Load it to run that profile
3. Edit allows you to fine tune that profiles Pressure, Time, Speed and top/bot temps.



4. Copy is to copy a profile to a new memory spot. Select the profile you want to copy then press copy, scroll to the profile you want to store that copy in and press paste. You can then edit the profile and rename it.

Manual Control



1. This shows the PROFILE , time is on the bottom and pressure is on the side , it is a RAMP/SOAK profile , it will ramp over time to the next position these are the ramps.
2. On the right side there are several pages touch these buttons to change pages and change settings.
3. Along the column of the grid you can touch anywhere in that column to change the pressure UP or DOWN and change the profile then SAVE it to a new memory location.
4. Go to the TOP temps to change them and BOT/SPEED etc. to change those values in the profile.
5. Save the profile and it shows up in the profile manager as MANUAL

Live mode



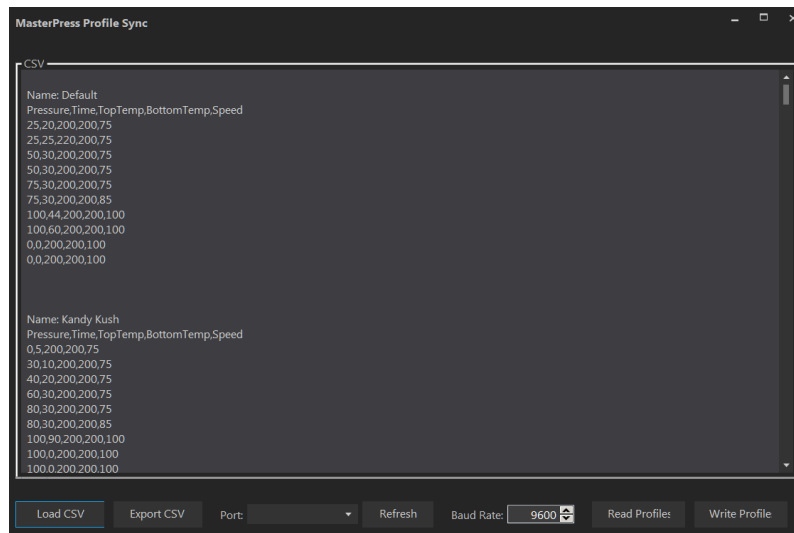
1. Press anywhere in the graph area a dot will appear this is the GO TO point , build a profile in this page then press START and it will run the on screen data points. Pause will appear in the run mode to pause the action.
2. Stop stops the process
3. Clear, clears the screen
4. Save saves this profile as LIVE in the profile manager.
5. This will emulate manual pressing like a hand operated press.

Setup Tab



1. Graph speed, this controls the ZOOM factor on the home page .
2. Pre heat Min. this sets the min amount in % that the temps need to be at before you can run a profile to keep from pressing at the wrong temp. set to ZERO to turn it off.
3. Factory Reset: this returns all setting to factory
4. Press min/max is for calibrating the sensor, do NOT change unless instructed to.
5. TOP/BOT temp PID , do NOT change these unless instructed to.
6. Save saves the settings

Import/Export Profiles



1. Install the import/export program on your computer.

2. Connect the USB on the back of the press to a USB port
3. Click REFRESH on the program, connect to the proper port
4. Go to the SETUP page on the press
5. To EXPORT the profiles, press EXPORT on the press then press READ PROFILES in the program, this will export the profiles to a file on your computer.
6. To IMPORT the profiles, LOAD a CSV profiles file first.
7. press IMPORT on the press then press WRITE PROFILE on the computer, this will write the file to the press.
- 8.

Specifications:

Weight: 135 lbs.

Dimensions: 18.5x24x12"

Heater plate material: 6x8" Aluminum black Anodized 6061-T6

Temperature range: ambient to 300deg F

Temperature accuracy: +/- 0.25%

Temperature stability: +/- 0.5%

Press time range: 5-600 seconds per profile

Wattage: 1200watts

Fuse: 10 amps

Voltage: 120VAC

Air pressure: 100 PSI min.