

How do I prepare to go vote?

What to take:

You may use one of seven forms of photo ID, listed below:

- Texas Drivers License
- Texas Election Identification Certificate
- Texas Personal Identification Card issued by the Department of Public Safety (DPS)
- Texas Handgun License issued by DPS
- US Military Identification Card containing your photograph
- US Citizenship Certificate containing your photograph
- US Passport (book or card)

Where to go:



Hidalgo County
Election Day Polling Sites



Hidalgo County
Early Voting Polling Sites



Cameron County
Early Voting Polling Sites



Cameron County
Election Day Polling Sites

When to go:

- **Early Voting is October 21st-November 1st.**
- **Election Day is November 5th.**
- **Polls are open 7am-7pm.**
- **During early voting, you may vote at any polling place.**
- **If you have a disability, you may request to move ahead of other voters in line.**
- **If in line before the poll closing time, you must be allowed to cast a ballot.**

Other things to know:

- Election officials cannot question a voter about the use of an ID type.
- Poll watchers may not: converse with a voter; record in the polling place; or observe a voter voting.

Vocabulary to know



DISTRICT JUDGE

Works in a federal court and makes important decisions about whether someone has broken federal laws. These judges hear both criminal cases (like bank robbery) and civil cases (like disputes between people or businesses from different states), listening carefully to both sides before making their decision based on the law.

DISTRICT ATTORNEY

The chief lawyer for a city or county who take legal action against people accused of breaking the law. They lead a team of lawyers who review evidence from police investigations and decide whether to charge someone with a crime, then present the case in court to prove the person's guilt.

PROPOSITIONS

A government proposition is like a suggestion for a new rule or change that people can vote on. When a proposition is approved, it becomes a new law or policy that everyone has to follow.

RAILROAD COMMISSIONER

A safety guard for the energy industry. They make sure that oil and gas companies follow the rules to protect people and the environment. Railroad commissioners also help decide how much we should pay for energy, like natural gas for heating our homes.

STATE SUPREME COURT JUSTICE

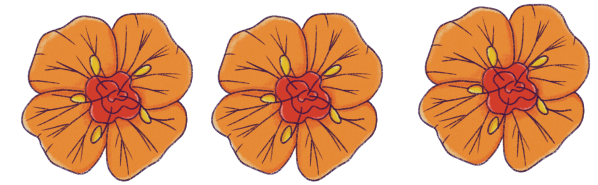
Top-level referees for the law in their state. They review important cases to make sure laws are being followed correctly and fairly. When there are disagreements about how to interpret state laws or the state constitution, these justices make the final decision. Their job is to protect people's rights and ensure justice is served across the entire state.

STATE REPRESENTATIVE

An elected official who works in your state's government. They listen to the concerns and ideas of the people they represent and then discuss and vote on bills in the state legislature. State representatives also work on budgets, participate in committees, and help their constituents with problems related to state government services.

STATE SENATOR

An elected official who works in the state government to make laws and decisions that affect people in their state. State senators listen to the concerns of the people they represent and work with other senators to create or change laws to address those concerns. They also help decide how to spend the state's money on different programs and services.



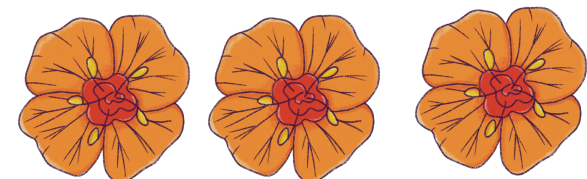
BLOOM RGV's Student Voter Guide

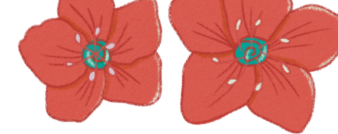


Early voting: Oct. 21 - Nov. 01, 2024

General Election: Nov. 05, 2024

Polls Open: 7am - 7pm





A message from us at BLOOM

Hey y'all!

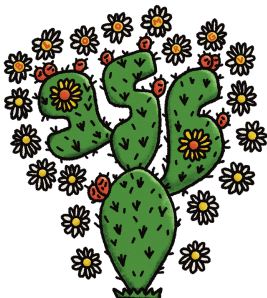
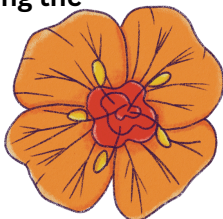
In this nonpartisan voter guide, we aim to provide you with unbiased information about some of what you'll see on your ballot at the polls this election season. Whether you're casting your vote for the first time or you're a seasoned voter, we encourage you to research each candidate's platform, their stance on key issues, and their track record. All information has been retrieved from their party websites and/or public statements.

Democracy thrives when all voices are heard. By participating in the electoral process, you are not only advocating for your own interests but also contributing to the collective well-being of society. Remember that voting is not the only way to contribute to our democracy, but it does have the power to create meaningful change.

We hope that this voter guide serves as a valuable resource in helping you make decisions that align with your values and beliefs. Of course, we encourage all voters to conduct their own research outside of our voter guide!

Thank you for being an engaged citizen and for taking an active role in shaping the future of our democracy.

-- BLOOM Rio Grande Valley



What political party do I align with?

Below are the most notable platforms of the Democratic, Green, Libertarian, and Republican parties taken straight from their websites! We hope you read through each one to get a better understanding of the values of each party. This way, you can decide which platforms fit your values and beliefs.

DEMOCRATIC PARTY



GREEN PARTY



LIBERTARIAN PARTY



REPUBLICAN PARTY



My notes:

Experiencing issues at the polls? Call 866-OUR-VOTE (866-687-8683) to speak with a trained Election Protection volunteer.

