



THE RICK HENNEN TEAM

Nestled on three picturesque acres, this meticulously maintained farmhouse offers the perfect blend of privacy and convenience. Surrounded by nature, with three serene ponds, a fenced-in garden, and ample parking, this property is an oasis just minutes from local shops, schools, and amenities. Boasting over 2,200 square feet of living space above grade, this home exudes charm and modern functionality. It features three bedrooms, two and a half bathrooms, and beautifully refinished hardwood floors throughout. The freshly painted interior welcomes you with a sense of warmth and care, while the newly installed windows and a newer HVAC system ensure comfort year-round. The completely renovated kitchen is a true centerpiece, blending style and practicality to create a space where cooking and gathering come naturally. Both full bathrooms have been thoughtfully updated with ceramic tile and elegant finishes, offering a spa-like retreat. The home also includes a cellar for additional storage, providing practicality and convenience for your lifestyle. The spacious dining area, now a cozy great room, features a wood stove that not only adds charm but also provides efficient heating for winter evenings spent relaxing with loved ones. Step outside to enjoy the expansive front porch, perfect for morning coffee or unwinding in the evening. The property also boasts a large barn with incredible storage potential that can easily be converted into a garage, as well as a smaller shed for added convenience. The barn includes a separate workshop and attic storage, making it ideal for hobbyists or those in need of extra space for projects.

2,256 sq ft  
3 Bed  
3 Bath  
offered at  
\$750,000

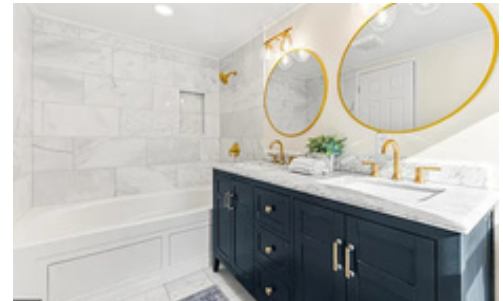
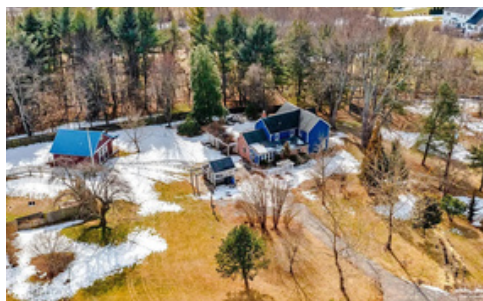
The information above is an estimation and for illustration purposes only. Please contact a Southern Trust Mortgage loan officer to receive a quote based on your specific lending scenario. Monthly payment assumes the base sales price of the community which includes principal, interest, estimated taxes, and hazard insurance. Rates on loan programs may vary based on credit criteria, final amount of down payment, and are subject to current market pricing. APR may vary depending on rate and final loan program. Certain restrictions may apply. Prices, offers, and financing are subject to change without notice. Rates are time-sensitive and subject to change without notice. See sales representative for details. \*Interest Rates are based off charging 1 discount point.

## Ask about our financing options!

3779 SHARP ROAD | GLENWOOD, MD 21738



PROGRAM	VA	CONV	CONV
Total Loan Amount	\$766,125	\$712,500	\$600,000
Down Payment	\$0	\$37,500	\$150,000
Interest Rate	6.25%	6.875%	6.875%
Annual Percentage Rate (APR)	6.645	7.525	7.084
Principal & Interest	\$4,717.16	\$4,680.62	\$3,941.57
Loan Term (in months)	360	360	360
Mortgage Insurance (MI)	N/A	\$224.56	N/A
Taxes	\$632.75	\$632.75	\$632.75
Homeowners Insurance	\$150	\$150	\$150
Estimated Total Monthly Payment	\$5,499.91	\$5,687.93	\$4,724.32



### Rick Hennen Team

Loan Officer Team | NMLS #662158

410-858-8853

rickhennenteam@southerntrust.com

www.rickhennenteam.com



THE RICK HENNEN TEAM

POWERED BY  
SOUTHERN TRUST  
MORTGAGE



Scan To Apply Online



Joe Smith

Real Estate Agent

Managing Partner

410-991-9414

443-901-2200

joesmith@nextsteprealtymd.com



Southern Trust Mortgage, LLC NMLS #2921 (<http://www.nmlsconsumeraccess.org>) lends in the following states: District of Columbia - #MLB-2921 | Delaware - #036386 | Maryland | North Carolina - #205483 | Pennsylvania - #94064 | South Carolina | Tennessee | West Virginia - #ML-34191 | Virginia - #MC7387 | Florida - MLD #2151; Southern Trust Mortgage, LLC d/b/a Southern Residential Lending in the following states: Georgia - #16579 | New Jersey - Licensed by the N.J. Department of Banking and Insurance. By refinancing a consumer's existing loan, the consumer's total finance charges may be higher over the life of the loan. Information is subject to change at any time.

NEXTSTEP  
REALTY