

RETAIL SPACE FOR RENT

Holly Plaza

6500 Holly Ave. NE | Albuquerque, NM



FIVE GUYS®



AVAILABLE:

- * Join: Kohl's, Panera Bread, Skechers, Five Guys, Jimmy John's, Weck's, Menchie's Yogurt, Nutrishop, and others
- * Thriving retail corridor - Paseo del Norte
- * 1,000 sf to 7,889 sf available

2010 DEMOGRAPHICS:

	1 MI	3 MI	5 MI
Population:	9,466	67,637	169,955
Average HH Income:	\$61,828	\$73,969	\$74,065

2009 TRAFFIC COUNTS:

Paseo del Norte	42,400 CPD
San Pedro Dr.	13,900 CPD

Jeremy Nelson
jeremy@base5retail.com
505.610.1655 [cell/text]

David Chavez
david@base5retail.com
505.507.3283 [cell/text]



Disclaimer: The information contained herein and attached is provided from sources deemed reliable. However, we do not guarantee any of the information as it is subject to errors, omissions, withdrawal from market, or change in terms, all without notice. All information should be independently verified.

BASE 5
RETAIL PARTNERS

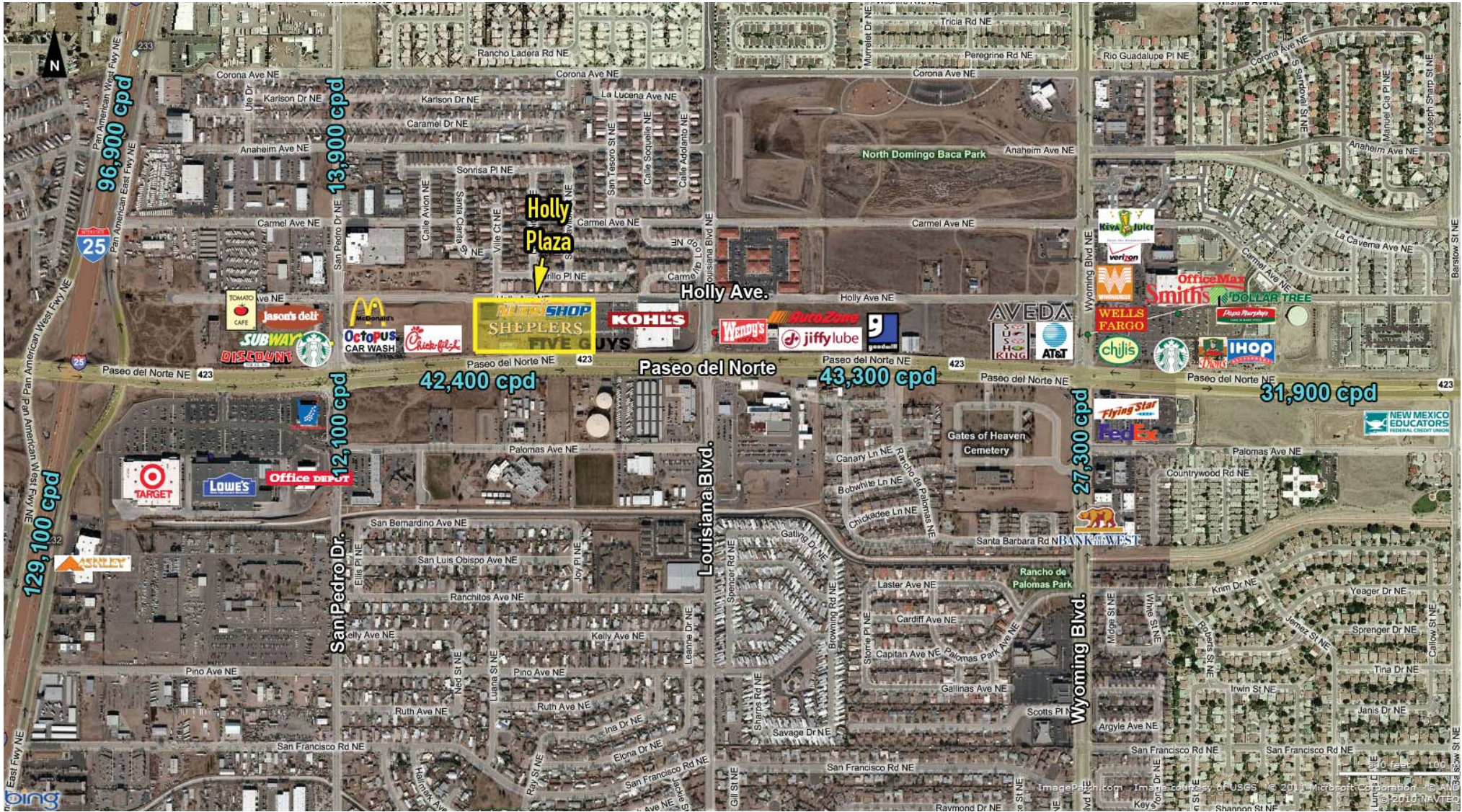
COUNT ON US

#505.807.0605 * BASE5RETAIL.COM * 115 GOLD AVE SW SUITE 2036 * ALBUQUERQUE, NM 87102

RETAIL SPACE FOR RENT

Holly Plaza

6500 Holly Ave. NE | Albuquerque, NM



BASE 5
RETAIL PARTNERS

COUNT ON US

Jeremy Nelson
jeremy@base5retail.com
505.610.1655 [cell/text]

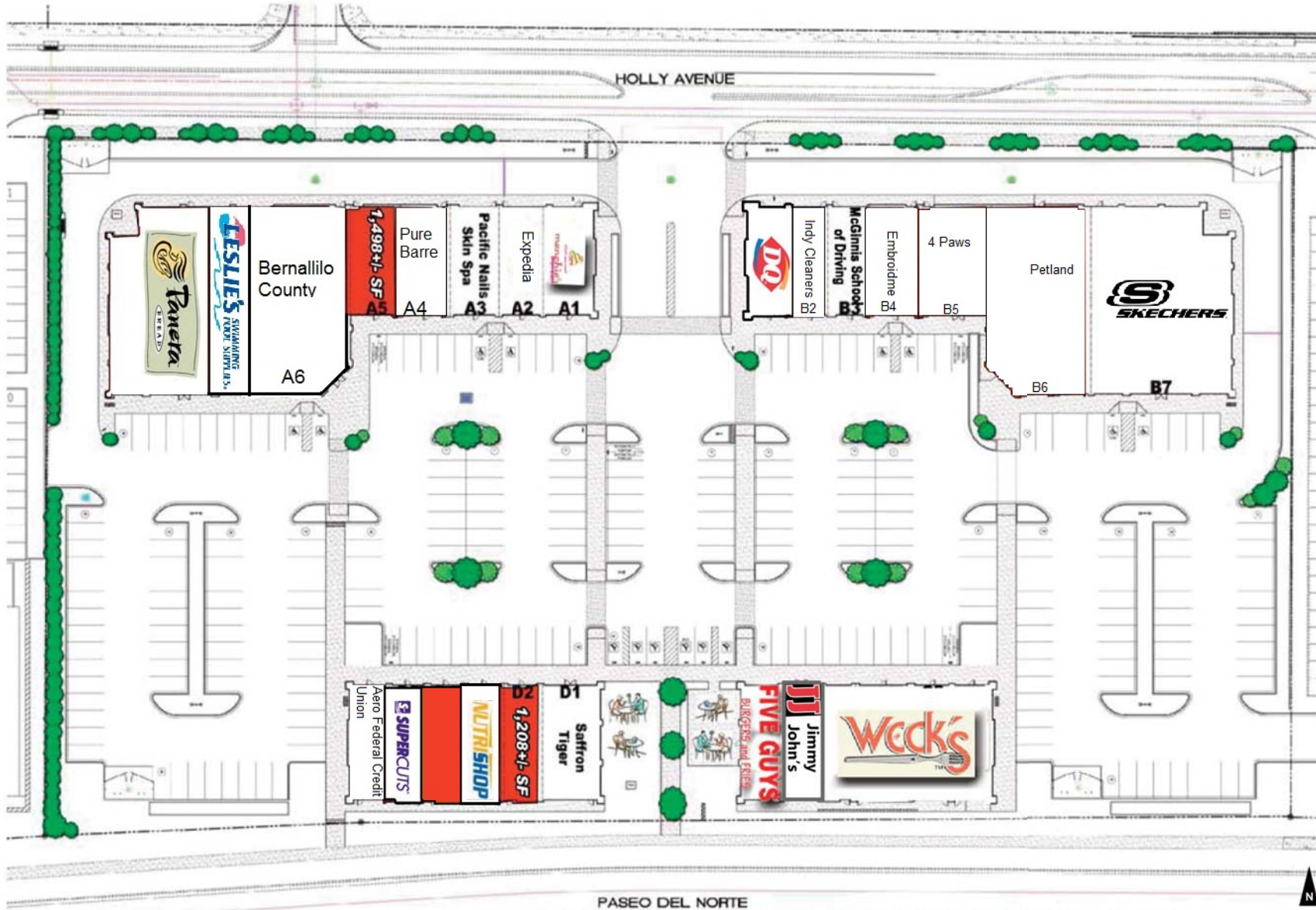
David Chavez
david@base5retail.com
505.507.3283 [cell/text]

#505.807.0605 * BASE5RETAIL.COM * 115 GOLD AVE SW SUITE 2036 * ALBUQUERQUE, NM 87102

RETAIL SPACE FOR RENT

Holly Plaza

6500 Holly Ave. NE | Albuquerque, NM



BASE 5
RETAIL PARTNERS

COUNT ON US

Jeremy Nelson
jeremy@base5retail.com
505.610.1655 [cell/text]

David Chavez
david@base5retail.com
505.507.3283 [cell/text]

#505.807.0605 * BASE5RETAIL.COM * 115 GOLD AVE SW SUITE 2036 * ALBUQUERQUE, NM 87102

SUMMARY PROFILE

1990-2000 Census, 2010 Estimates with 2015 Projections

Calculated using Proportional Block Groups



BASE 5
RETAIL PARTNERS

Base 5 Retail Partners

Lat/Lon: 35.1756/-106.5746

RS1

Holly Plaza		1 mi radius	3 mi radius	5 mi radius
Albuquerque, NM 87113-2130				
POPULATION	2010 Estimated Population	9,466	67,637	169,955
	2015 Projected Population	10,479	73,162	178,840
	2000 Census Population	7,168	58,564	155,242
	1990 Census Population	5,511	50,229	140,452
	Projected Annual Growth 2010 to 2015	2.1%	1.6%	1.0%
	Historical Annual Growth 1990 to 2010	3.6%	1.7%	1.1%
HOUSEHOLDS	2010 Median Age	39.5	38.4	40
	2010 Estimated Households	3,960	27,991	72,240
	2015 Projected Households	4,301	29,835	75,020
	2000 Census Households	3,028	24,258	65,350
	1990 Census Households	2,220	19,938	56,598
	Projected Annual Growth 2010 to 2015	1.7%	1.3%	0.8%
RACE AND ETHNICITY	Historical Annual Growth 1990 to 2010	3.9%	2.0%	1.4%
	2010 Estimated White	75.4%	77.3%	78.0%
	2010 Estimated Black or African American	2.2%	2.5%	2.7%
	2010 Estimated Asian or Pacific Islander	7.1%	6.5%	5.8%
	2010 Estimated American Indian or Native Alaskan	0.2%	0.2%	0.2%
	2010 Estimated Other Races	10.9%	9.9%	9.9%
INCOME	2010 Estimated Hispanic	35.7%	34.0%	34.1%
	2010 Estimated Average Household Income	\$61,828	\$73,969	\$74,065
	2010 Estimated Median Household Income	\$49,575	\$60,174	\$58,578
EDUCATION (AGE 25+)	2010 Estimated Per Capita Income	\$26,013	\$30,960	\$32,070
	2010 Estimated Elementary (Grade Level 0 to 8)	2.0%	3.0%	3.5%
	2010 Estimated Some High School (Grade Level 9 to 11)	6.4%	5.0%	5.0%
	2010 Estimated High School Graduate	30.5%	22.4%	22.6%
	2010 Estimated Some College	24.8%	23.4%	23.3%
	2010 Estimated Associates Degree Only	8.3%	7.7%	7.5%
	2010 Estimated Bachelors Degree Only	16.9%	21.1%	20.4%
BUSINESS	2010 Estimated Graduate Degree	11.0%	17.4%	17.6%
	2010 Estimated Total Businesses	591	4,247	11,277
	2010 Estimated Total Employees	8,503	58,833	131,645
	2010 Estimated Employee Population per Business	14.4	13.9	11.7
	2010 Estimated Residential Population per Business	16.0	15.9	15.1

This report was produced using data from private and government sources deemed to be reliable. The information herein is provided without representation or warranty.