



City of Saskatoon,
Saskatchewan, Canada



C I F E A R T



Davidson Traffic Control Products
 "Creating Products To Save Lives"
 Made in the USA





At Pexco, Davidson Traffic Control Products we are passionate in our pursuit of excellence and dedicate ourselves to the very best of quality in everything we do. We are always working towards developing new products, being aware of the ever-changing conditions and the need for improved safety. As we work together to find solutions to our customer's needs, we are always mindful of the driving public and strive daily to live up to our motto: **“Creating Products to Save Lives.”**

Table of Contents

| | |
|--|-----|
| Adhesive Application Chart | 23 |
| Adhesives and Anchors | 22 |
| Barrier Reflectors | 15 |
| Barricades, Type II and Type III..... | 16 |
| Base Options for FG 300 Posts..... | 8 |
| Bicycle Safety Products | 9 |
| Button/Marker Covers..... | 21 |
| City Post®..... | 4-5 |
| DP 200 Round Channelizer Posts | 12 |
| Enhanced Linear Delineation (ELD)..... | 13 |
| FG 300 Ground Mount Delineator Posts | 11 |
| FG 300 Surface Mount Channelizer Posts..... | 6 |
| Flexible Roadside Delineator Posts..... | 10 |
| Green Cross - Crosswalk Safety Products | 18 |
| Guardrail Reflectors..... | 14 |
| Interstate Grade Curb System | 7 |
| Island Alert Curb Reflectors..... | 13 |
| “O-Frame” Parade-Style Barricade..... | 16 |
| Parking Lot Sign and Base System | 19 |
| Raised Rumble Strips..... | 21 |
| Self-Righting Vertical Panels..... | 19 |
| Sign Post Reflectors..... | 19 |
| Snow Poles and Posts | 10 |
| Temporary Pedestrian Access Route (TPAR) Barricade | 17 |
| Turnpike Grade Curb System | 7 |
| Type III Barricades..... | 16 |
| Work Zone Pavement Markers | 20 |

Welcome to Pexco's 2018 Davidson Traffic Control Product Overview!

Last year's theme was **“Durability Redefined”**, as we rolled out yet another new post that “raised the bar”, establishing new standards of performance. The value of using a more durable product was proven in real life, with numbers like a **91% reduction in replacement, 87% reduction in dangerous lane changes, and 43% reduction in accidents**. And more importantly – but difficult to measure – is the **HUGE** improvement in worker safety due to the reduced need to replace poor quality, failed posts.

We encourage you to peruse our website, invite our team to meet with your team face-to-face, or spend time with us at one of our many trade exhibitions held throughout the year. Through direct dialogue, we can help develop the best solutions to meet your specific needs.

We maintain an extensive library of CAD drawings, product specifications and product information sheets on our engineering support website, www.caddetails.com. Traffic designers can easily download what they need right into their plans with a simple click of the mouse. Direct links to this engineering support website can be found on each Traffic and Safety product page on our website. Just click on the red **CADdetails** icon to use this valuable resource.

Pexco's team continues to expand their family of high quality and high value traffic control products to meet the challenges on our roadways, “Creating Products to Save Lives.”

Wishing you a safe and prosperous 2018.

Most sincerely,

Peter Speer
Global Affairs Manager
Pexco LLC



Pexco® is a leading manufacturer of recycled traffic control products





Barrier Delineation

ELD – Enhanced Linear Delineation 13
 PCBMs 15
 PCBMs with Gator Jaws Hinge 15



Bike Lanes/Cycle Tracks

City Post4-5
 FG 300 Posts 6
 DP 200 Posts 12



Channelization

City Post4-5
 FG 300 Posts 6
 FG 300 Curb Systems 7



Guardrail Delineation

Delineator Posts 10
 ELD – Enhanced Linear Delineation 13
 Guardrail Reflectors 14



Managed Lanes/HOT Lanes

City Post4-5
 FG 300 Posts 6
 FG 300 Curb Systems 7



Older Driver Safety

Island Alert 13
 Sign Post Reflectors 19
 ELD – Enhanced Linear Delineation 13



Pedestrian Safety

O-Frame 16
 TPAR 17
 Crosswalk Safety Products 18



Run-Off-the-Road Mitigation

Roadside Delineators 10
 FG 300 Ground Mount Posts 11
 ELD – Enhanced Linear Delineation 13



Work Zone Safety

Type III Barricades 16
 FG 300 Posts 6
 Work Zone Pavement Markers 20



City Post®

Pexco's City Post is the highest-performing channelizer post on the market today.

The City Post remains flexible, even at extremely high and low temperatures, and returns to a full upright position even after 100 impacts at 70 mph (112 km/h).

The City Post was created using advanced engineering resins to provide maximum strength and superior durability. The solid, single unit polyurethane construction absorbs impacts and rebounds instantly.

Testing and Certificates:

Texas A&M Transportation Institute (TTI)

- 100 impact **NTPEP** test at 70 mph / 112 km/h
- Less than 3 degrees off vertical
- Not a single failure
- **EN 12767 Passive Safety Certified**
- **MUTCD**-compliant
- **NCHRP 350** accepted

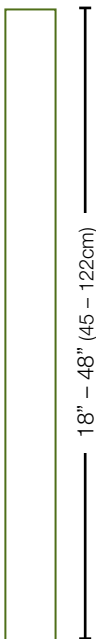
Three styles to cover all installation requirements: Embedded Anchor Cup (EAC), Surface Mount (SM), or Glue Down (GD)

- Quick, sharp rebound
- 3" round post with a slim, sleek profile
- Thermoplastic Polyurethane for high impact resistance and quick, sharp rebounds
- Minimizes worker exposure
- No mechanical springs to fail
- 360° of reflectivity
- 72% reduction in life cycle cost
- 90% reduction in worker risk
- Choose white, yellow, fluorescent orange, or black (custom colors available)
- UV resistance keeps the City Post looking fresh and new after prolonged periods in the elements
- 1-year limited warranty

Applications for the City Post include:

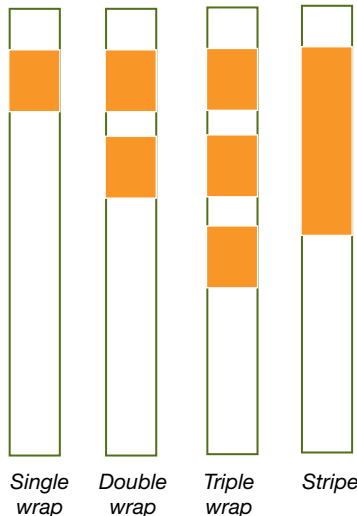
- HOT and HOV Lanes
- Dangerous Curves
- Toll Plazas
- Bike Lanes
- Parking Lots
- Airports
- Gore Areas
- Traffic Circles
- Pedestrian Walkways

Lengths



City Post Options

Reflective sheeting options
Choose your configuration:



| City Post Family of Posts - Model Comparison | | | |
|--|--|-------|------------|
| Post Model | SM | GD | EAC |
| Rating | Best | Best | Best |
| Standard Colors | White, Yellow, Fluorescent Orange, Black | | |
| Impacts @ 70 mph | 100 | 100 | 100 |
| 1-Year Warranty | Yes | Yes | Yes |
| Anchoring | Bolts | Epoxy | Anchor cup |



Download the "City Post Durability Study" at www.pexco.com/traffic





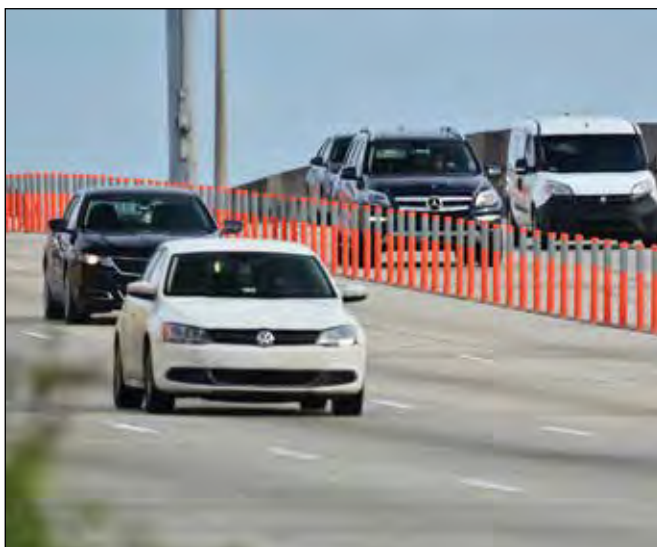
**Original City Post EAC
with Embedded Anchor Cup**

- Easy “spin-in” installation
- Installs in concrete or asphalt
- Available with 2” or 4” anchor cups
- Optional threaded cap for a flush pavement surface when post is removed
- Non-protruding base is ideal for bike lanes and pedestrian pathways



City Post SM Surface Mount

- 72% reduction in life cycle cost
- 90% reduction in worker risk
- 1-piece construction
- Quick, sharp rebound
- Bolt-down installation
- No mechanical springs to fail
- Installs in concrete or asphalt
- Minimizes worker exposure
- Maximizes public safety
- 1-year limited warranty
- 360° reflectivity



New!

City Post GD Glue Down

- No drilling, faster installations
- Installs on concrete or asphalt
- Exclusive “pinwheel” base
- Installs with road marker epoxy
- 1-piece construction
- Glue down installation
- No assembly required
- No springs to fail



FG 300 Surface Mount Channelizer Post



FG 300 Surface Mount Channelizer Posts

The clover-leaf design of the FG 300 tubular marker provides far better rebound than simple round tubes. The curving of the sides of the FG 300 tube changes the moment of inertia and builds up tremendous potential energy, resulting in a quick and sharp rebound after impact.

The FG 300 is offered in three grades:

- Model PE for general applications
- Model UR, the industry workhorse
- Model EFX for your toughest installations

All three grades are compatible with our six different bases (page 8) and FG 300 Curb Systems (page 7)

No metal pins in bases to rust or seize – simple installation and replacement of damaged posts.



Testing and Certificates:

- Proven durability on the **NTPEP** and **TTI** test decks
- NTPEP Reports #TTCD 6020.1 and 6021.11
- **EN 12767 Passive Safety Certified**
- **MUTCD**-compliant
- **NCHRP 350** accepted

| FG 300 Family of Posts - Model Comparison | | | |
|---|--|--------|------|
| Post Model | PE | UR | EFX |
| Rating | Good | Better | Best |
| Standard Colors | White, Yellow, Fluorescent Orange, Black | | |
| Impacts @ 60 mph | 15+ | 50+ | 60+ |
| 1-Year Warranty | — | — | Yes |



Clockwise:
 FG 300 LED collar,
 FG 300 Top Cap options,
 Locking Pin Removal Tool

- Posts available in yellow, white, fluorescent orange, fluorescent yellow-green for added visibility; custom colors available
- Black or matching color bases (see page 8)
- Mounts with butyl pads, hot melt bitumen, epoxy, Super Bundy®, or FG 300 anchor bolts (see page 22)



FG 300 Grade Curb Systems



Intergrade Curb (IG)

The FG 300 Intergrade (IG) Curb System is a lane separation system that provides efficient and cost-effective channelization of traffic on freeways, toll-ways, city streets and rail-highway at-grade crossings. This one-piece curb system links together for a continuous “picket fence” effect and consists of modular raised curb sections mountable by emergency vehicles. The Intergrade Curb System features our FG 300 UR and EFX posts, two of the toughest channelizer posts on the market.

Testing and Certificates:

- **NCHRP 350** accepted (**FHWA Letter WZ-193**)
- **MASH**-tested to **TL3** at **62 MPH / 100 km/h**
- **MUTCD**-compliant

- Low maintenance; super-tough FG 300 polyurethane posts
- Curb sections install in just minutes with one person
- Installs with 4 bolts, or adhesive for temporary projects
- Design allows for curved or circular installations for roundabouts
- Only warranty covering both curbs and posts in the industry



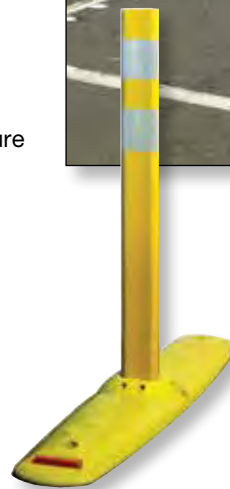
Turnpike Grade Curb (TG)

The FG 300 Turnpike Grade (TG) curb system is a raised lane separator with durable upright channelizer posts that provide efficient and cost-effective channelization of traffic on Managed Lanes, 2-way 2-lane Work Zones and other areas where discontinuous channelization is desired. The “picket fence” effect divides lanes going in the same direction or opposite directions in high-speed, high-volume applications where continuous curb is too costly or not needed. Use where pavement markings alone are not sufficient to safely channelize traffic.

- Low maintenance; super-tough FG 300 polyurethane posts
- Engineering polymer alloys for superior toughness at all temperature extremes
- Engineered to stand up to the toughest of conditions
- Only requires 4 bolts per unit, quick and easy to install
- Installs with bolts, or adhesive for temporary projects
- Only warranty covering both curbs and posts in the industry

Testing and Certificates:

- **NCHRP 350** accepted (**FHWA Letter #WZ-282**)
- **MUTCD**-compliant
- **MASH**-tested to **TL3** at **62 MPH / 100 km/h**



Applications for the FG 300 Curb Systems include:

- Rail-highway “Quiet Zone” crossings
- Acceleration lanes
- Left-Turn restrictions
- Through lane protection in busy urban areas
- Lane separation in 2-way 2-lane detours
- Traffic calming, roundabouts and traffic circles
- Toll plazas



Base Options for FG 300 Posts

All FG 300 Bases mate with all three grades of FG 300 posts – PE, UR and EFX



FG 300 Lite Black Base

Standard black surface mount base with quick release pins for general purpose applications. Mounts with butyl pads, hot melt bitumen, epoxy or FG 300 anchor bolts.



FG 300 Heavy Duty Colored Base

Extra tough colored base increases the visibility of post by 15%. Available colors match our posts: yellow, white, fluorescent orange, and fluorescent yellow-green for added visibility. Mounts with butyl pads, hot melt bitumen, epoxy or FG 300 anchor bolts.



FG 300 Metro Base

A surface mount base for the FG 300 posts where space is at a premium. It is a slimmer version of our standard 8 inch round surface mount base that is ideal for curbs, narrow roadways, tunnels, ferry terminals, and parking garages. Mounts with butyl pads, hot melt bitumen, epoxy or FG 300 anchor bolts.

The Metro Base is available in white, yellow, fluorescent orange and green.



10# Portable Rubber Cookie Base

Designed for situations where the base and post will be moved frequently on and off the road surface. The lightweight ten pound base is ideal for school crosswalk applications because it is easily carried and moved.



35# Portable Banana Base

This portable, heavy-duty base has two recessed handles and two banana-shaped grooves for easy handling, stacking and storage. It has a smaller footprint than barrels, yet it requires no additional ballast. It has a fixed metal base plate for stability and durability. It features an easy assembly with Quick Release Pins that attach posts into place in seconds, and is resistant to repeated impacts. The new design works with the Lite Black Base, the Heavy Duty Colored Base, as well as the Parking Lot Sign Base (as shown on page 19).



FG 300 Invisi-Base

The FG 300 Invisi-Base allows our channelizer posts to be flush-mounted. An optional winter cover allows post to be removed to accommodate snow plow operations for an extremely clean installed look.

Invisi-Base installed



Winter cover with post removed



The Need for Safer Bicycle Lanes

Cities across the country are making more room for the cyclist population a priority. The motivation is fueled by the need to reduce congestion and improve overall safety for all who use our nation's roadways.

Separated bike lanes have been shown to be safer than biking in the street and more likely to encourage biking. State-of-the-art designs are being implemented nationwide to create separated spaces for cyclists. Channelizing posts are an important tool in the "cycle track" tool box.

Bicycle Friendly Posts Offer High Performance, Durability and Improved Safety

For traffic engineers designing bike tracks, tubular markers are an invaluable tool to prevent cars from encroaching on bike lanes. They can also alert and slow down drivers and cyclists as they approach a hazardous intersection.

Pexco's polyurethane posts are both tough for long life and forgiving for cyclists. They are soft and pliable. They have proven durability and long life resulting in reduced maintenance costs.

Pexco's FG 300 UR, EFX and City Posts are offered in a variety of configurations to improve bicycle safety.



The Benefits of Bicycle Friendly Posts for Bike Lanes:

- Provides clear delineation and physical separation
- Highly visible day and night
- Reduces vehicle entry
- Improves cyclist and pedestrian safety
- Allows for emergency vehicle access
- Recognized traffic control device
- Low maintenance

FG 300 TG Curb



For more information on Bike Lane Safety Products, including links to helpful resources like the FHWA's Separated Bike Lane Planning and Design Guide, visit www.pexco.com/traffic.



Flexible Roadside Delineators / Snow Poles



Flexible Roadside Delineator Posts

These driveable flexible guide posts for roadside delineation are made of recycled engineering polymers to withstand repeated impacts. They will not discolor when exposed to UV rays and will not rust, rot or splinter. They offer strength, flexibility and durability to stand up in the harshest weather conditions.

Testing and Certificates:

- **NTPEP** tested (NTPEP Report 96-124)
- **NCHRP 350** accepted (FHWA Letter SS-71)
- **MUTCD**-compliant



- The FG 400 and 500 posts can be cut to any length; three standard colors: white, yellow and gray, other colors by special order
- The single curve profile of the FG 500 provides maximum display area for vertical messages visible from wide angles
- The double curve FG 400 provides more rigidity to reduce fluttering in the wind

- For tighter budgets, consider the Fantasma post, a PVC post with the 500 profile
- Factory-applied reflective sheeting for nighttime visibility
- Message decals are available and can be applied at the factory



YouTube



Roadside delineator posts are used for marking roadway shoulders, guiding snow plowing operations and marking utility line locations.

In North America, highways are marked with yellow posts on the left, and white posts on the right. In snow country, the beginning of a run of guardrail can be marked with a red post, and the end of the run marked with a green post. These color-coded posts provide added visibility to snow plow operators, limiting damage to the guardrails.

FG 500 posts for marking utility lines are available in additional APWA colors: Red (power), Orange (telecom), Blue (water), Purple (irrigation) and Green (sewers).



Snow Poles and Posts

Snow removal presents some unique problems, especially at night, dusk and dawn. These highly visible fluorescent guides help plow operators avoid hazards and reduce damage to fixed objects.

Pexco's Snow Poles and Posts are cost-effective, more durable than wood or PVC pipe, and can be used wherever bright, effective roadside markings are needed.



- Exclusive honeycomb cross-section provides great strength and keeps poles lightweight
- Round poles in six vivid UV stabilized colors are highly visible
- Reflective sheeting can be applied for increased night visibility
- Applications: marking fire hydrants, culverts, junction boxes and drains; setting snowmobile trails and cross-country ski trails; supporting banners and signs; securing snow fences, delineating lift lines

FG 300 Ground Mount Delineator Post



FG 300 Ground Mount Delineator Posts

The FG 300 Ground Mount delivers durability, low maintenance and quick replacement.

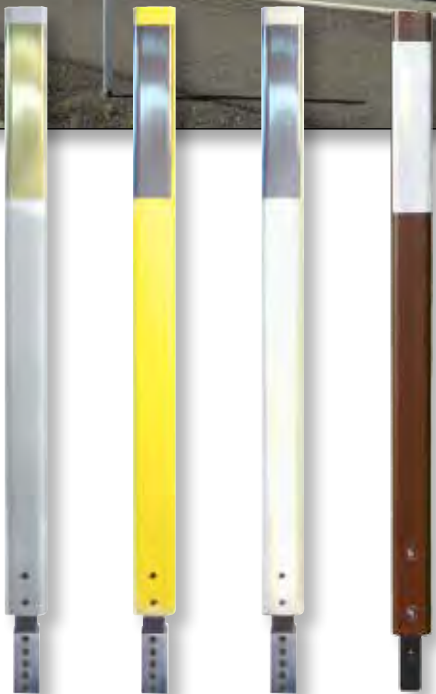
The unique polyurethane coupler connecting the upright tubular post to the steel anchor can take an impact from any direction and still keeps the post upright and functional. It has been proven to withstand multiple high speed impacts on the NTPEP Test Deck.

The clover-leaf design of the FG 300 provides far better rebound than simple round tubes. Curving the insides of the tube changes the moment of inertia and builds up tremendous potential energy, resulting in a quick and sharp rebound when impacted.

Combine ease of replacement, the geometry of the FG 300 and polyurethane – the toughest flexible engineering polymer – and the result is a roadside post that sets new standards of durability and convenience.

Testing and Certificates:

- **NTPEP** tested (Report # TTCD 6025.5)
- **NCHRP 350** accepted
- **MUTCD**-compliant



Benefits of FG 300 Ground Mount

- **Durable** – the proven upright post is the incredibly tough FG 300
- **Simple** – single pin allows for quick and easy replacement of damaged posts
- **Practical** – 2-part system uses a permanent anchor and replaceable upright post
- **Easy to install** – can be driven by hand or with a machine using common tools
- **Convenient** – anchor is a widely available 2-inch square steel tube

DP 200 Round Channelizer Post



DP 200 Channelizer Posts

These 3-inch round polyurethane posts are highly visible, day and night. They clearly delineate driving lanes with bright colors and reflective sheeting. To reduce the risk of accidents, place DP 200 posts at critical points along your roadways where safety hazards exist.

The DP 200 remains flexible, even at extreme temperatures, and returns to an upright position after impact.

Testing and Certificates:

- **NTPEP Tested** (TTCD 6024.1)
- **NCHRP 350** accepted
- **MUTCD-compliant**
- **EN 13422 Certified**



- Durable thermoplastic polyurethane for high impact resistance from all directions
- 360° of reflective visibility
- Available up to 39 inches (1 meter) tall
- Simple installation and low maintenance – no metal parts to rust or seize
- UV Stabilized polymers
- Applications include: Traffic islands, dangerous curves, work zones, parking lots, airports, gore areas, highway railroad intersections and traffic circles

Standard surface mount base with quick-release pins for general purpose applications. Mounts with butyl pads, hot melt bitumen, epoxy, Super Bundy®, or FG 300 anchor bolts (see page 22). Available in yellow, white, fluorescent orange and black.





Island Alert Curb Reflector

The Island Alert Curb Reflector is a low-cost safety solution designed to improve the visibility of raised islands, median noses, pedestrian refuges and similar roadway features.

The Federal Highway Administration recommends that all curbs at intersections, including median islands and other raised channelization, be delineated. The exceptional retro-reflectivity of Island Alert markers provides a clear visual cue to the motorist of the full-radius of raised medians, reducing accidents and improving safety.

This simple device can be applied to almost any median nose shape or configuration due to its narrow, flexible design.

Benefits of Island Alert

- Visible – continuous ribbon of reflectivity
- Simple – prime, peel & stick application
- Practical – low-cost safety solution improves roadway safety
- Flexible – notched foot allows installation to match curvature
- Durable – UV-stable flexible polyurethane for long life in the field



Flexible design wraps around any median



Enhanced Linear Delineation (ELD)

Quickly provide linear delineation of concrete barrier walls or steel guardrails with reflectors from Pexco. A closely spaced row of Pexco's reflectors creates a "ribbon of light" to alert drivers of approaching curves.

Built with high brightness sheeting, these devices help motorists see changes in the roadway alignment, especially beneficial at night and in adverse weather. Adding red sheeting on the back side of the reflector sends a "wrong way" message to errant drivers.

Benefits of Pexco's ELD

- Visibility – provides superior guidance to motorists
- Simple – fast and easy to install onto steel or concrete
- Economical – 50% reduction in material and labor costs



*Butterfly Glue-on
(also available in
Bolt-on style)*



Hi-Viz Flex Tab

Guardrail Reflectors



Typical Applications include:

- W-beam guardrails
- Wood and steel guardrail posts
- Bridge approaches
- Hills, curves, gores, off-ramps

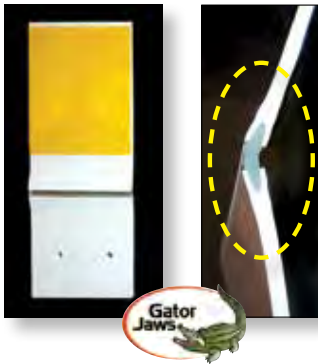
Guardrail Reflectors

Illuminate invisible guardrails at night with bright reflective markers that provide clear delineation. Pexco's guardrail markers are manufactured with engineering resins and are designed to endure the rigors of construction work zones and permanent installations. We can manufacture reflectors using any grade or color of reflective sheeting in order to meet your local requirements.

Ask for Pexco's Unique "Gator Jaws" Hinge!

Our exclusive "Gator Jaws" feature greatly increases the strength of flexible reflectors by adding a mechanical bond to the hinge, which provides 500% greater bonding surface area between the rigid base and the flexible polyurethane hinge. Even in extreme cold temperatures, the hinge remains flexible!

Available on our **I-Flex**, **U-Flex** and **S-Flex** Guardrail Reflectors.



S-Flex

4" x 8.75" reflector with our unique "Gator Jaws" flexible polyurethane hinge that bends easily and bounces back. The S-Flex mounts to wood or steel guardrail posts. Designed for cold weather environments to prevent loss of reflective tape during subzero temperatures.

Butterfly

Trapezoidal reflectors fit perfectly inside W-beam guardrails, and are available in two styles – Bolt-on and Glue-on. You can create a "ribbon of light" to more safely guide drivers at night by closely spacing Butterfly markers every 18 inches (see ELD on page 13).



FG 427, 527

Both markers are 27 inches long and accommodate 36 square inches of sheeting. Can be mounted on guardrail posts positioning the reflectors 48 inches above the road surface.



Fat Cat

Oversized rigid guardrail marker measures 4"x15".



I-Flex

Fits over steel I-beam guardrail posts with "Gator Jaws" polyurethane hinge.





Concrete Jersey Barrier Reflectors

Pexco's PCBM (portable concrete barrier markers) are made of high-impact thermoplastics for long, maintenance-free life in the field. A variety of styles meet all your needs from high target value to impact resistance. We can manufacture reflectors using any grade or color of reflective sheeting in order to meet your local requirements.

Our exclusive "Gator Jaws" feature greatly increases the strength of flexible reflectors by adding a mechanical bond to the hinge which provides 500 % greater bonding surface area between the rigid base and the flexible polyurethane hinge. Even in extreme cold temperatures, the hinge remains flexible! Available on **T-9**, **T-12** and **T-16** (not shown) Barrier Wall Reflectors.

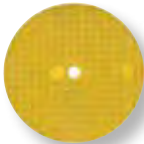
Typical Applications of PCBMs include:

Delineation of temporary or permanent concrete barrier walls, bridge parapets, or on top of wooden guardrail posts.



Hi-Viz Flex Tab

This flexible polyurethane marker mounts to median barrier walls. Available in white or yellow, 1 or 2-way reflective, with white, fluorescent yellow, orange or red "**Wrong Way**" prismatic sheeting, and factory-applied adhesive pad.



HOT Dots

Abrasion and impact resistant 3 inch centermount reflectors.



YouTube



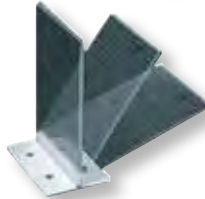
PCBM-L16

16-inch tall reflector designed to be mounted on top of a standard 32 inch concrete barrier wall.



PCBM-12

With over 12 square inches of reflective sheeting and the versatility of either top or side mount placement, this is our most popular marker!



PCBM-T12



Barrier mount reflector featuring our "Gator Jaws" polyurethane hinge and 12 square inches of reflective sheeting.



Big Dog

Extra large top mount reflector that features 96 square inches of prismatic sheeting.



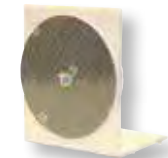
PCBM-9

MUTCD compliant and economical barrier mount reflector that can be used for top or side mount delineation.



Little Dog

A bit smaller than the Big Dog, but still provides incredible brightness with 72 square inches of reflective sheeting.



PCBM-9 HD

Center mount barrier reflector which houses our new 3 inch HOT Dot®.



PCBM-15

Used for top mount installations in heavy snow regions because the 8 inch height places the reflector above the snow on the barrier wall.



PCBM-T9



A hinged marker with 9 inches of sheeting designed for use on top of moveable barrier systems.

Type III and O-Frame Barricades



Type III with the "Yeti" foot



X-Tube Upright

Type III Barricades

Type III barricades are very lightweight – only 22 pounds – easy to handle and have few parts to assemble. Pexco's T3B panels are virtually unbreakable.

Testing and Certificates:

- NCHRP 350 accepted (FHWA Letters WZ-63, -77, -150, -151)
- MASH-tested at 70 MPH / 112 km/h
- MUTCD-compliant

Upright options:

- 1.75" lightweight plastic square reinforced X-Tube
- 1.75" steel PSST upright
- 3.5" square poly-upright

Barricade feet options:

- 5' angle iron powder-coated white foot (WZ #63 + 77)
- 5' galvanized steel 2" PSST foot (WZ #150)
- "The Yeti" 40# recycled rubber foot (WZ #151)

Hardware options:

- Standard bolts, washers and lock nuts
- Anti-theft hardware
- Quick release pin

"O Frame" Parade-Style Barricades

Instantly create an MUTCD-compliant Type I or II barricade.

O-Frame impact-resistant and UV-stable thermoplastic barricades are designed for low-speed municipal applications including crowd control, parking control and plank box utility closures. They are ideal for cordoning off an area during public events.

- Accommodates 1" or 2" plastic or wood panels
- Panels available in 4, 6, 8, 10 and 12-foot standard lengths
- Panels and legs available for purchase separately or together
- Legs stack for easy storage
- Choose Engineer, High Intensity or Prismatic sheeting

Testing and Certificates:

- NCHRP 350 accepted (FHWA Letter WZ #180a)
- MUTCD-compliant



Type II configuration with 2 x 8" panels

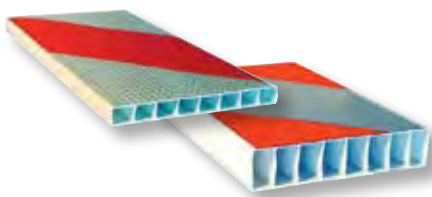


Type I configuration



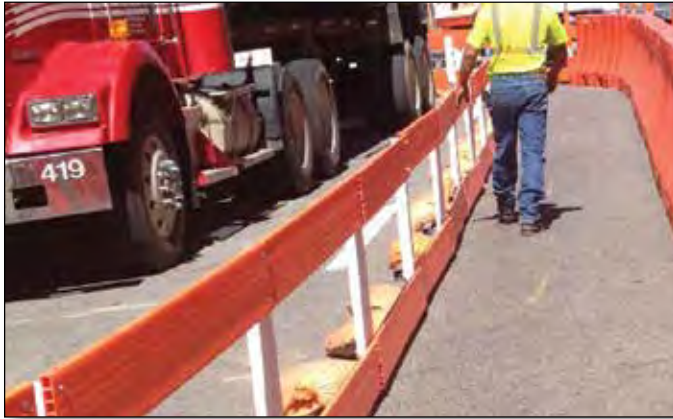
Type II configuration

Barricade Panels



- Wide flat panels make application of reflective sheeting simple and fast
- Either panel can be used to build a Type III or Parade-style barricade
- Internal I-beams for a rigid, lightweight board that reduces sagging and warping
- UV-stabilized high density polyethylene
- Available blank or sheeted, single-sided, double-sided or Chevron style, 2' to 14'
- Available in orange/white or red/white for "dead end" roads

Temporary Pedestrian Access Route (TPAR) Barricades



TPAR Type II Pedestrian Access Barricade

TPAR Type II Barricades provide continuous guidance for all pedestrians in work zones.

Pexco's TPAR Type II Barricade is an ADA, MUTCD and NCHRP 350 compliant temporary traffic control device. It provides safe, continuous guidance for pedestrians through urban work zones. Components are quick to assemble.

TPAR Temporary Barricades are UV-stabilized, offer superior strength and withstand all weather conditions.

- Top and bottom barricade panels come pre-drilled for easy assembly
- The barricades nest together for easy transport and storage
- The top rail provides an easy to follow hand guide
- The lower barricade rail allows for water drainage and acts as a guide for pedestrians who use a cane
- TPAR ADA hinge connects the barricade panels to create angles and corners
- When fully assembled, the TPAR barricade creates a very narrow footprint of only 15 inches deep!
- TPAR panels are available in white or fluorescent orange by special order
- Panels are available blank or with factory applied retroreflective sheeting, in lengths of 4', 6', or custom lengths
- Top and bottom barricade panels share a common vertical face with nothing protruding into the walkway, eliminating trip hazards

Testing and Certificates:

- Meets 2009 **MUTCD** 6F.63, 6F.71 and 6F.74



The top panel acts as a smooth continuous guide for the hand



The bottom panel acts as a detectable edge for pedestrians using canes

Top View of Continuous Run



No part of the barricade protrudes into the walkway

Create Angles & Corners



Using the ADA Hinge



Create angles and corners



Utility Box

The ADA hinge seamlessly connects the barricade panels to create angles and corners.



Green Cross - Crosswalk Safety Products



The Green Cross Product Line

Pexco offers many options for improving crosswalk safety suited to meet your program and your budget:

- Self-righting Fluorescent Yellow Green (FYG) safety posts to highlight crosswalk areas
- Bases to secure safety posts to the roadway
- Highly reflective flags, signs and stop paddles

Testing and Certificates:

- **NCHRP 350** accepted (FHWA Letters WZ-230, -231, -232)
- **MUTCD**-compliant

Green Cross Post Options:

Pexco offers several alternatives to metal posts for easy transport and cost savings:

- 42 inch PE FYG Safety Post – Economical, lightweight post compatible with any of our FG 300 bases to support reduced size signs (S1-1)
- 42 inch EFX FYG Safety Post – Super tough post designed to support larger signs and stand up to the most challenging installation, compatible with all FG 300 bases
- 42 inch X-Tube Upright – Lightweight square white reinforced plastic post for use with our Yeti base

Green Cross Sign Options:

- 12 inch Reflective FYG Schoolhouse Super Hi-Intensity Sign – Flexible lightweight sign that can be used at un-signalized school crossings and complies with **MUTCD** guidelines
- 12" x 36" Yield to Pedestrian or Stop for Pedestrian flexible sign can be placed at un-signalized school crossings. These portable signs meet the standards of the **2009 MUTCD for YTP (R1-6) or SFP (R1-6A) signs**

Green Cross Base Options:

- FG 300 FYG Heavy Duty Base is for fixed installations where the post and base will remain on the road surface for an extended period of time
- FG 300 10# Round Portable Cookie Base for temporary installations where the base will be frequently moved from the road
- FG 300 35# Portable "Banana Base" is engineered to support the weight of larger crosswalk signs, yet transport is easy due to convenience of recessed handles
- "The Yeti" 40# Portable Base is heavy duty enough to stand up to high winds and support large crosswalk signs. The bases stack for simplified storage and molded handles make transport easy. The Yeti base is for use with the X-Tube upright only



School Crossing on Cookie Base (S1-1)



YTP Rigid Sign on "Banana" Base (R1-6) (WZ #231)



SFP Rigid Sign on "Banana" Base (R1-6A) (WZ #231)



Yeti base (WZ #232)



Fixed Base

Additional FG 300 base options shown on page 8

Parking Lot Signs / Sign Post Reflectors / Vertical Panels



Parking Lot Sign System

The Pexco sign post system allows for rapid installation of lightweight, durable plastic sign posts. Less expensive than steel, and far more visible, the system takes only minutes to install and will last for years. These posts bend when struck, return to vertical and won't damage vehicles like steel posts.

The white **X-Tube** Post is a 1.75" square post supported by two internal, corner-to-corner reinforcing cross beams. Made from UV-stabilized polymers, the posts offer superior impact resistance and withstand all weather conditions.

The **Parking Lot Base** is created from a high impact-resistant UV-stabilized resin, and is designed to conserve space and reduce trip hazards. It accepts both the X-Tubes and 1.75" square steel tube and locks securely in place with a simple bolt or quick-release pin. Available with optional 35# rubber "banana" base or square cap.



X-Tube



Parking Lot Sign Base



Portable Rubber Base



Optional Top Cap



Day



Night



At RR Crossing

Sign Post Reflectors

Complex backgrounds in rural or urban settings make signs less noticeable. Pexco sign post reflectors are easy to install, and greatly increase visibility...day and night.

- Reflective stripes increase the visibility of regulatory and warning signs
- Fits on wood, U-channel and square steel sign posts
- Mounts to posts with hardware or VHB tape
- Available in two widths: 2 or 3-inches
- Available in two lengths: 60 or 72-inches
- Available in four colors: red, white, yellow and fluorescent yellow green



Opposing Traffic Lane Divider



Work Zone Vertical Panel on a Banana Base



FG 300 Type K Island Marker

Opposing Traffic Lane Divider (OTLD)

Fluorescent orange vertical panels used as a center lane divider to separate opposing vehicular traffic on a two-lane, two-way operation. 12" x 18" (36" overall height)

Self-Righting Vertical Panels

Pexco work zone vertical panels stand up to tremendous abuse. The posts rebound and panels re-orient after being struck to eliminate resetting and keep workers off the road.

Type K Markers/Island Markers

Pexco's FG 300 Type K / Island markers are the ideal way to mark and identify both raised and painted islands. They alert operators to raised locations during snow plow operations and help prevent damage to signs, light posts and vehicles.

Work Zone Pavement Markers



TRPM

TRPM - Flexible Chip Seal Markers

Simple to use “Stick and Stomp” TRPMs come with one or two clear plastic covers designed to protect the marker and reflective sheeting from asphalt spray or slurry products.

- Factory-applied butyl pad for reliable “Stick and Stomp” installation
- Standard colors are yellow and white
- Available with single or double covers and multiple staple configurations
- High heat TRPMs are available for hot-applied, rubberized asphalt chip seals



TOM

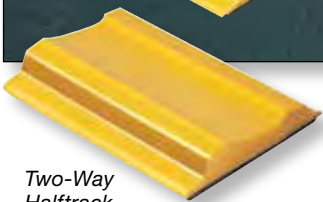
TOM - Temporary Overlay Markers

Primarily for short-term temporary lane line markings in asphalt paving projects and other construction work zones, these markers are placed after final rolling of the new asphalt. TOMs are engineered for easy application and removal to reduce the amount of time workers are in the roadway.

- Standard colors are yellow and white; additional colors by special order
- Factory-applied butyl pad keeps TOMs in place and are easily removed with a simple tug
- Available with bright and tough cube corner, micro-prismatic sheeting on one or both sides



One-Way Halftrack



Two-Way Halftrack

RPM

RPMs and Halftracks

Effective and convenient long-term temporary road markers are designed to be long lasting enough for use on both low volume roads and interstate highways to provide clear guidance to motorists both night and day. Simple to install and remove.

- Two standard colors – white and yellow
- Reflective tape can be applied on one or both sides
- Optional factory-applied high-tack butyl adhesive pad allows for a peel and stick application to the roadway



Rumble Strips / Button Covers / Baby Markers



Raised Rumble Strip

Our Rumble Strip Model 3708 is ideal to delineate gores, bike and pedestrian lanes, and road shoulders to help prevent dangerous run-off-the-road accidents. The 3708 rumble strip is a solid uni-body marker which eliminates any hollow areas that can crack or crush when impacted by a vehicle.

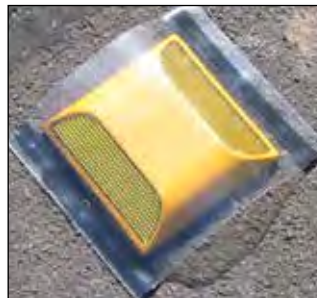
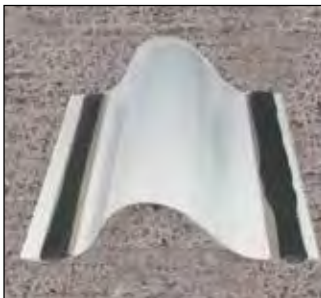


- Install with hot melt bitumen or 2-part epoxy
- Available in standard white and yellow, or in custom red, blue and black
- Lengths: 8, 10 and 12 inches; 4, 5, 6 and 8 feet

Button/Marker Covers

Temporary transparent cover protects pavement marker from oil and asphalt during chip seal operations.

- Applies easily with peel-and-stick two inch butyl adhesive strips on opposite sides of the cover
- Easily removed after chip seal operation
- Dimension of button cover – 5" x 6"



Baby Road Markers

Self-adhesive 2" x 1.5" flexible raised pavement markers used on chip seal, slurry seals and fog seals where nighttime reflectivity is not required. The marker is placed on an existing line or utility location prior to the surface treatment for each relocation.

- Markers protrude up through the new surface, retaining the original location and eliminating the need to resurvey
- Two types of Baby Road Markers are available:
Type Y – amber body; Type W – white body

Adhesives and Anchors

Road Marker Epoxy



Our rapid-setting, 2-part grey road marker epoxy is the most reliable permanent adhesion product available. Typical applications include our new City Post, FG 300 posts, both curb systems and our rumble strips.

Spray Primer #80

Primer # 80 is an easy to use high-strength, contact spray adhesive for improving the adhesion of butyl to concrete and steel. Use this primer for preparing concrete barrier wall prior to installing Hi-Viz Flex Tabs, and installing temporary road markers on old asphalt and all concrete roadways.



Hand-held Epoxy Gun

FIRMmarker® is a clean, efficient, and easy to use adhesive system specifically formulated for channelizer posts, barrier and guardrail reflectors and permanent raised pavement markers. The convenient packaging reduces prep time and waste.



DAPCO Adhesive 795A



A one-part, fast-cure adhesive for bonding concrete barrier markers, guardrail reflectors and other delineation products. 795A requires no mixing, is effective over a broad temperature range, has excellent weathering properties and offers “primerless” adhesion to concrete, asphalt and steel. 10oz. and 20oz. tubes available. Used with standard caulking gun.

Hi-Tack Butyl Adhesive - “Peel and Stick”



A butyl adhesive that offers quick, reliable adhesion for temporary installations of traffic control products. The butyl adhesive is available in 8” x 8” x 1/4” pads and 45 foot rolls and is suitable for bonding many of our channelizer and pavement marking products. The standard color is black; grey is available by special order.

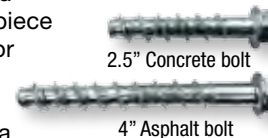


SuperBundy™ Adhesive “Heat 'N Stick”

SuperBundy™ Adhesive is perfect for permanently adhering larger objects like channelizer posts or curb sections. SuperBundy Adhesive has resilient characteristics which enable it to remain flexible throughout its lifetime. Requires 2 pads per install.

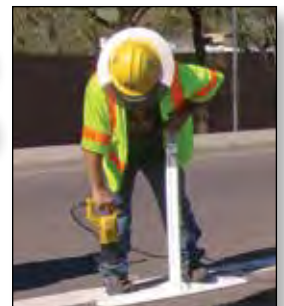
FG 300 Anchor Bolts

Removable and reusable one-piece anchor bolts for FG 300 bases and curb sections have a finished hex head, an integral washer, dual-lead threads and a chamfered tip.



One-piece bolts eliminate the need to keep track of and assemble separate pieces of traditional molly bolts before installation.

Dual-lead threads prevent the bolts from spinning in the holes when tightened.

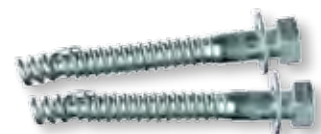


City Post SM Anchors

Removable and reusable one-piece anchor bolts for the City Post SM are reusable bolt-type expansion anchors. Install bolt-type anchors in holes drilled with carbide tipped drill bits; see installation instructions for details. (Note: FG 300 anchor bolts are not suitable for City Post SM installations.)



3” bolt for concrete



5” bolt for asphalt

Adhesive Application Chart

| Product | Page # | Adhesive 795A 10 oz tube installs | Epoxy 1 quart each A plus B installs | Primer #80 10 oz spray can (for use with butyl) installs |
|---|--------|---|---|---|
| Butterfly Reflectors | 13-14 | 35 units | 200 units | — |
| City Post Anchor Cup (2-inch) | 5 | — | 8 units | — |
| City Post Anchor Cup (4-inch) | 5 | — | 2 - 3 units | — |
| City Post GD Post | 5 | — | 5 units | — |
| DP 200 Surface Mount Base | 12 | 2 units | 8 units | 75 units |
| FG 300 Standard Base | 8 | 2 units | 8 units | 75 units |
| FG 300 Interstate and Turnpike Grade Curbs | 7 | 1.25 units | 3 units | — |
| Halftrack | 20 | — | 300 units | 100 units |
| Hi-Viz Flex Tab | 15 | — | — | 200 units |
| I-Flex | 14 | 16 units | 175 units | — |
| Invisi-base | 6, 8 | — | 6 units | — |
| Island Alert (48") | 13 | — | — | 60 |
| Metro Base | 8 | 2 units | 8 units | — |
| Parking Lot Base | 19 | — | 12 units | — |
| PCBM 12 and 912 | 15 | 16 units | 175 units | 250 units |
| RPM | 20 | — | 75 units | 50 units |
| Rumble Strips (12") | 21 | — | 25 units | — |
| TRPM, TOM | 20 | — | — | 200 units |

All units are estimated. Your results may vary.

Visit our website for downloadable:

- Product Information PDF files
- Options and Applications PDF files
- Installation Procedure PDF files
- The most up-to-date 2018 Electronic Product Catalog!

www.pexco.com/traffic



Click the CADdetails link on our website for up-to-date technical drawings and material specifications



Search "Pexco Traffic Safety Channel" on YouTube for our product videos and demonstrations or scan our QR codes



A whirlwind of colors lit up the Sculpture Garden of the Montreal Museum of Fine Arts this past summer with TOM IV: FLOWER POWER, a work of public art displayed along Du Musée Avenue. The installation created by the landscape architect Claude Cormier is a paean to creativity and the psychedelic spirit of the sixties.

The TOMs, in 10 colors, sparkle like so many sparks on an evening of fireworks. The psychedelic spirit of the 1960s was expressed without complexity in a succession of circular patterns intertwined, the colors of which blend with one another.

Who would have thought that the simple TOM marker – first invented by Pexco in 1986 – could have been used in such a creative manner? And who would have thought that the TOMs would find their way all around the world, saving lives on roadways thousands of miles away?

The first, and always the best. TOM markers from Pexco.



TOM - Temporary Overlay Marker



Davidson Traffic Control Products

"Creating Products To Save Lives"



Pexco LLC
 Davidson Traffic Control Products
 3110 70th Avenue East
 Tacoma, WA 98424 USA
 USA Toll-Free: 877-335-4638
 International: 1-253-284-8000
 Fax: 1-253-284-8080
 Email: hwysales@pexco.com
www.pexco.com/traffic