



# ECCO®



## SNOWPLOW SOLUTIONS

SOLUCIONES PARA QUITANIEVES  
SOLUTIONS POUR CHASSE-NEIGES

[ECCOESG.COM](http://ECCOESG.COM)

# PICKUP SNOWPLOW SOLUTIONS

SOLUCIONES PARA QUITANIEVES DE CAMIONETAS | SOLUTIONS POUR CAMIONNETTES CHASSE-NEIGES



## FEATURED PRODUCT EW4008

FOUR 12-WATT LEDs

Packaged in pairs, the EW4008 Series is an effective and economical solution for headlight replacement that features intense light output with advanced reflector optics. With aluminum heatsink housing and a built-in breather, these lights operate efficiently under any weather conditions.

El modelo serie EW4008, envasado en pares, es una solución económica y eficaz para el reemplazo de reflectores que ofrece una salida de luz intensa con óptica de reflectores avanzados. Con una carcasa de disipador de calor de aluminio y un respiradero integrado, estas luces funcionan eficientemente en cualquier condición climática.

Emballées par paires, les lampes de la série EW4008 sont une solution efficace et économique pour le remplacement des phares qui offre un flux lumineux intense avec optiques à réflecteur avancées. Avec un boîtier dissipateur de chaleur en aluminium et un reniflard intégré, ces lampes fonctionnent efficacement, quelles que soient les conditions météorologiques.

<p><b>A</b></p> <p><b>EW4008</b> FOUR 12-WATT LEDs DOT CERTIFIED HIGH/LOW &amp; INDICATOR/MARKER 5-YEAR WARRANTY</p>	<p><b>EW4009</b> THREE 47-WATT LEDs DOT CERTIFIED SNOW-MELT &amp; ANTI-ICING SYSTEM 5-YEAR WARRANTY</p>	<p><b>EW4010</b> FOUR 12-WATT LEDs DOT CERTIFIED HEATED LENS &amp; SNOW-MELT 5-YEAR WARRANTY</p>	
<p><b>B</b></p> <p><b>ED5051 SERIES</b> SINGLE- OR DUAL-COLOR SAE CLASS I 5-YEAR WARRANTY</p>	<p><b>ED3701/3702 SERIES</b> SINGLE-, SPLIT-, DUAL- OR TRI-COLOR SAE CLASS I 5-YEAR WARRANTY</p>	<p><b>ED3777 SERIES</b> SINGLE- OR DUAL-COLOR SAE CLASS I 5-YEAR WARRANTY</p>	<p><b>ED3766 SERIES</b> DUAL-COLOR SAE CLASS I 5-YEAR WARRANTY</p>
<p><b>C</b></p> <p><b>FOCUS360™ SERIES</b> TEN 5-WATT LEDs 360° CONTINUOUS ROTATION 5-YEAR WARRANTY</p>	<p><b>EW3200 SERIES</b> DOUBLE ROW, 8-25" MODELS FLOOD/SPOT COMBO 5-YEAR WARRANTY</p>		

**D**

**ED3760 SERIES**  
DUAL-COLOR  
RUNNING BOARDS, TAILGATES  
5-YEAR WARRANTY

<p><b>E</b></p> <p><b>5550 SERIES REFLEX®</b> SINGLE- OR DUAL-COLOR SAE CLASS I, 11" 5-YEAR WARRANTY</p>	<p><b>5580 SERIES REFLEX®</b> SINGLE-COLOR SAE CLASS II, 15" 5-YEAR WARRANTY</p>	<p><b>EB7185 SERIES</b> DUAL-COLOR LED BEACON SAE CLASS I 5-YEAR WARRANTY</p>	<p><b>12+ SERIES VANTAGE™</b> SAE CLASS I LIGHTBAR 24-72" LENGTHS 5-YEAR WARRANTY</p>
<p><b>F</b></p> <p><b>EW2530</b> SIX 10-WATT LEDs 120° FLOOD WORKLIGHT 5-YEAR WARRANTY</p>	<p><b>EW2110 SERIES</b> SEVEN 1-WATT LEDs OPTICAL DEUTSCH CONNECTOR 5-YEAR WARRANTY</p>	<p><b>EW2605</b> NINE 7-WATT LEDs DEUTSCH CONNECTOR 5-YEAR WARRANTY</p>	<p><b>EW4020</b> THIRTY-SIX 1.2-WATT LEDs DEUTSCH CONNECTOR, HEATED LENS 5-YEAR WARRANTY</p>
<p><b>G</b></p> <p><b>9014 SERIES</b> LED CONCEALED WARNING HEAD/TAIL LIGHT MOUNT 5-YEAR WARRANTY</p>	<p><b>ED0010 SERIES</b> LED CONCEALED WARNING HEAD/TAIL LIGHT MOUNT 5-YEAR WARRANTY</p>	<p><b>9011 SERIES</b> LED CONCEALED WARNING HEAD/TAIL LIGHT MOUNT 5-YEAR WARRANTY</p>	<p><b>9031 SERIES</b> LED CONCEALED WARNING HEAD/TAIL LIGHT MOUNT 5-YEAR WARRANTY</p>
<p><b>H</b></p> <p><b>500 SERIES</b> COMPACT SIZE UNIVERSAL MOUNTING BRACKET 2-YEAR WARRANTY</p>	<p><b>EA9724</b> MULTI-FREQUENCY™ SMART ALARM™ 12-24V, 77-97dB ECCOLIFET™ WARRANTY</p>	<p><b>EC5605-WK</b> 5.6" COLOR WIRELESS SYSTEM FOUR CAMERA EXPANDABLE 1-YEAR WARRANTY</p>	<p><b>EC7008-WK</b> 7" QUAD VIEW LCD COLOR WIRELESS SYSTEM FOUR CAMERA EXPANDABLE</p>



### VEHICLE MOUNTING

- 3RD BRAKELIGHT PLATFORM - F150, 250, 350
- WHITE LED - #EZ1000W-FL
- BLACK LED - #EZ1000B-FL
- WHITE HALOGEN - #EZ1001W-FH
- BLACK HALOGEN - #EZ1001B-FH
- ED3701/02 BRACKET
- 90° L BRACKET - #EZ3704LBKT
- GRILLE BRACKET - #EZ3704GBKT

ADDITIONAL ACCESSORIES, MODELS, AND YEARS AVAILABLE AT [WWW.ECCOESG.COM](http://WWW.ECCOESG.COM)  
Otros accesorios, modelos y años disponibles en [www.ecco.esg.com](http://www.ecco.esg.com) | Accessoires, modèles et années supplémentaires offerts à l'adresse [www.ecco.esg.com](http://www.ecco.esg.com)

# HEAVY-DUTY SNOWPLOW SOLUTIONS

SOLUCIONES PARA QUITANIEVES DE SERVICIO PESADO | SOLUTIONS POUR CHASSE-NEIGES À USAGE INTENSIF



## FEATURED PRODUCT EW4010

### FOUR 12-WATT LEDS

Replace headlights and melt the snow and ice away with EW4010's heated lenses. These LEDs are weather-resistant and deliver 80,000+ hours of maintenance-free operation with surprisingly low amp draw. The high intensity light output and CE rating make the EW4010 a perfect fit for a variety of DOT applications.

Reemplace los faros y derrita la nieve y el hielo con los lentes calefactados EW4010. Estos LED son resistentes al clima y ofrecen más de 80 000 horas de funcionamiento sin mantenimiento con un consumo de amperios sorprendentemente bajo. La salida de luz de alta intensidad y el marcado CE hacen del modelo EW4010 un ajuste perfecto para una variedad de aplicaciones DOT.

Remplacez les phares et faites fondre la neige et la glace avec les lentilles chauffantes du modèle EW4010. Ces LED sont résistantes aux intempéries et offrent plus de 80 000 heures de fonctionnement sans entretien avec une consommation en ampères étonnamment faible. Le flux lumineux à haute intensité et le marquage CE font du modèle EW4010 une solution idéale pour une grande variété d'applications DOT.

A



**12+ SERIES VANTAGE™**  
SAE CLASS I LIGHTBAR  
24-72" LENGTHS  
5-YEAR WARRANTY



**21 SERIES**  
SAE CLASS I LIGHTBAR  
22-91" LENGTHS  
5-YEAR WARRANTY



**DUOBEAM™ SERIES**  
SINGLE-COLOR  
SAE CLASS I, 10"  
5-YEAR WARRANTY



**5590 SERIES REFLEX®**  
SINGLE- OR SPLIT-COLOR  
SAE CLASS I, 15"  
5-YEAR WARRANTY

B



**EW4010**  
FOUR 12-WATT LEDS  
DOT CERTIFIED  
HEATED LENS & SNOW-MELT  
5-YEAR WARRANTY



**EW4009**  
THREE 47-WATT LEDS  
DOT CERTIFIED  
SNOW-MELT & ANTI-ICING SYSTEM  
5-YEAR WARRANTY



**EW4008**  
FOUR 12-WATT LEDS  
DOT CERTIFIED  
HIGH/LOW & INDICATOR/MARKER  
5-YEAR WARRANTY

### VEHICLE MOUNTING

**12+ SERIES VANTAGE™**  
HEADACHE RACK BRACKET - #A1032RMK  
STANDARD FEET KIT - #ER0002  
\*VEHICLE SPECIFIC BASKETS AVAILABLE

**21/27 SERIES**  
HEADACHE RACK BRACKET - #A2127HRMK  
STANDARD FEET KIT - #A2127FT  
\*VEHICLE SPECIFIC BASKETS AVAILABLE

**ED3700 SERIES BRACKET**  
90° L BRACKET - #EZ3703LBKT / #EZ3704LBKT / #EZ3705LBKT  
GRILLE BRACKET - #EZ3703GBKT / #EZ3704GBKT / #EZ3705GBKT  
LICENSE PLATE BRACKET - #EZ3706LPBKTH



C



**7965 SERIES**  
SINGLE-COLOR LED BEACON  
SAE CLASS I  
5-YEAR WARRANTY



**EB7185 SERIES**  
DUAL-COLOR LED BEACON  
SAE CLASS I  
5-YEAR WARRANTY



**EW3420**  
50" COMBINATION UTILITY BAR  
WITH SAFETY DIRECTOR™  
5-YEAR WARRANTY



**ED3300 SERIES**  
HIGH-INTENSITY WARNING  
SAFETY DIRECTOR™  
5-YEAR WARRANTY

D



**ED3777 SERIES**  
SINGLE- OR DUAL-COLOR  
180° MULTI-MOUNT  
SAE CLASS I  
5-YEAR WARRANTY



**ED3766 SERIES**  
DUAL-COLOR  
SURFACE MOUNT  
SAE CLASS I  
5-YEAR WARRANTY



**ED3700 SERIES**  
SINGLE-, SPLIT-, DUAL- OR TRI-COLOR  
LOW PROFILE, SURFACE MOUNT  
SAE CLASS I  
5-YEAR WARRANTY



**3811/3861 SERIES**  
SINGLE- OR DUAL-COLOR  
SURFACE OR GROMMET MOUNT  
SAE CLASS I  
5-YEAR WARRANTY

E



**EW4020**  
THIRTY-SIX 1.2-WATT LEDS  
DEUTSCH CONNECTOR, HEATED LENS  
5-YEAR WARRANTY



**EW2101**  
SIX 3-WATT LEDS  
FLOOD WORKLIGHT  
5-YEAR WARRANTY



**EW2605**  
NINE 7-WATT LEDS  
DEUTSCH CONNECTOR  
5-YEAR WARRANTY



**EW2530**  
SIX 1-WATT LEDS  
120° FLOOD WORKLIGHT  
5-YEAR WARRANTY

F



**EW2441A**  
SIX 3-WATT LEDS  
AMBER ILLUMINATION  
5-YEAR WARRANTY



**EA9724**  
MULTI-FREQUENCY™ SMART ALARM™  
12-24V, 77-97dB  
ECCOLIFE™ WARRANTY



**800 SERIES**  
REVERSE-MOUNTED SPEAKER  
SMART & OEM OPTIONS  
ECCOLIFE™ WARRANTY



**EC7008-WK**  
7" QUAD VIEW LCD  
COLOR WIRELESS SYSTEM  
FOUR CAMERA EXPANDABLE



### VEHICLE MOUNTING

**ED3766 SERIES BRACKET**  
UNIVERSAL BRACKET - #EZ3766L

ADDITIONAL ACCESSORIES, MODELS, AND YEARS AVAILABLE AT [WWW.ECCOESG.COM](http://WWW.ECCOESG.COM)  
Otros accesorios, modelos y años disponibles en [www.ecco.esg.com](http://www.ecco.esg.com) | Accessoires, modèles et années supplémentaires offerts à l'adresse [www.ecco.esg.com](http://www.ecco.esg.com)

# GRADER SOLUTIONS

SOLUCIONES DE MOTONIVELADORAS | SOLUTIONS POUR NIVELEUSES



## FEATURED PRODUCT EW4009

THREE 47-WATT LEDS

Replace headlights while melting the snow and ice away with EW4009's heated lenses. These LEDs are weather-resistant and deliver 80,000+ hours of maintenance-free operation with surprisingly low amp draw. The high intensity light output and CE rating make the EW4009 a perfect fit for a variety of DOT applications.

Reemplace los faros y derrita la nieve y el hielo con los lentes calefaccionados EW4009. Estos LED son resistentes al clima y ofrecen más de 80 000 horas de funcionamiento sin mantenimiento con un consumo de amperios sorprendentemente bajo. La salida de luz de alta intensidad y el marcado CE hacen del modelo EW4009 un ajuste perfecto para una variedad de aplicaciones DOT.

Remplacez les phares et faites fondre la neige et la glace avec les lentilles chauffantes du modèle EW4009. Ces LED sont résistantes aux intempéries et offrent plus de 80 000 heures de fonctionnement sans entretien avec une consommation en ampères étonnamment faible. Le flux lumineux à haute intensité et le marquage CE font du modèle EW4009 une solution idéale pour une grande variété d'applications DOT.

<p><b>A</b></p>  <p><b>7970 SERIES</b> SINGLE-COLOR LED BEACON SAE CLASS I 5-YEAR WARRANTY</p>	<p><b>EB7185 SERIES</b> DUAL-COLOR LED BEACON SAE CLASS I 5-YEAR WARRANTY</p> 	<p><b>7660 SERIES ROTOLED™</b> LED HYBRID BEACON SAE CLASS I 5-YEAR WARRANTY</p> 	<p><b>5590 SERIES REFLEX®</b> SINGLE- OR SPLIT-COLOR SAE CLASS I, 15" 5-YEAR WARRANTY</p> 
<p><b>B</b></p>  <p><b>EW4009</b> THREE 47-WATT LEDS DOT CERTIFIED SNOW-MELT &amp; ANTI-ICING SYSTEM 5-YEAR WARRANTY</p>	<p><b>EW4010</b> FOUR 12-WATT LEDS DOT CERTIFIED DOT CERTIFIED WITH SNOW-MELT 5-YEAR WARRANTY</p> 	<p><b>EW4008</b> FOUR 12-WATT LEDS DOT CERTIFIED HIGH/LOW &amp; INDICATOR/MARKER 5-YEAR WARRANTY</p> 	<p><b>EW2603</b> FIFTEEN 1.5 WATT LEDS 110° LIGHT OUTPUT FLOOD/SPOT COMBO 5-YEAR WARRANTY</p> 

### VEHICLE MOUNTING

**7970 SERIES**  
BRANCH GUARD - #A6070BG

<p><b>C</b></p>  <p><b>7160 SERIES REFLEX®</b> SINGLE-COLOR LED BEACON SAE CLASS I 5-YEAR WARRANTY</p>	<p><b>7660 SERIES ROTOLED™</b> LED HYBRID BEACON SAE CLASS I 5-YEAR WARRANTY</p> 	<p><b>7965 SERIES</b> SINGLE-COLOR LED BEACON SAE CLASS I 5-YEAR WARRANTY</p> 	<p><b>7950 SERIES</b> SINGLE-COLOR LED BEACON SAE CLASS II 5-YEAR WARRANTY</p> 
<p><b>D</b></p>  <p><b>EW0360 / EW0370</b> LED INTERIOR LIGHTING SURFACE MOUNT 5-YEAR WARRANTY</p>	<p><b>EW0800 SERIES</b> LED INTERIOR LIGHTING 90° CORNER MOUNT 5-YEAR WARRANTY</p> 	<p><b>EW0202/203 SERIES</b> LED INTERIOR LIGHTING HIGH-BOND TAPE / SCREW MOUNT 5-YEAR WARRANTY</p> 	<p><b>EW0100 SERIES</b> LED STRIP LIGHTING HIGH-BOND TAPE / SCREW MOUNT 5-YEAR WARRANTY</p> 
<p><b>E</b></p>  <p><b>FOCUS360™ SERIES</b> TEN 5-WATT LEDS 360° CONTINUOUS ROTATION 5-YEAR WARRANTY</p>	<p><b>EW2110 SERIES</b> SEVEN 1-WATT LEDS OPTIONAL DEUTSCH CONNECTOR 5-YEAR WARRANTY</p> 	<p><b>EW2601 SERIES</b> LED INTERIOR LIGHTING 20° DOWN ANGLE 40° DOWN ANGLE 5-YEAR WARRANTY</p> 	<p><b>EW4030</b> FIFTY-SIX 1.5-WATT LEDS DEUTSCH CONNECTOR 5-YEAR WARRANTY</p> 
<p><b>F</b></p>  <p><b>800 SERIES</b> REVERSE-MOUNTED SPEAKER SMART &amp; OEM OPTIONS ECCOLIFE™ WARRANTY</p>	<p><b>SA951</b> SMART ALARM™ 12-48V, 77-97dB 2-YEAR WARRANTY</p> 	<p><b>EA9724</b> MULTI-FREQUENCY™ SMART ALARM™ 12-24V, 77-97dB ECCOLIFE™ WARRANTY</p> 	<p><b>EC7008-WK</b> 7" QUAD VIEW LCD COLOR WIRELESS SYSTEM FOUR CAMERA EXPANDABLE</p> 

### VEHICLE MOUNTING

**7160 SERIES**  
BRANCH GUARD - #A6050BG  
**7965 SERIES**  
BRANCH GUARD - #A6050BG  
**7950 SERIES**  
BRANCH GUARD - #A6070BG

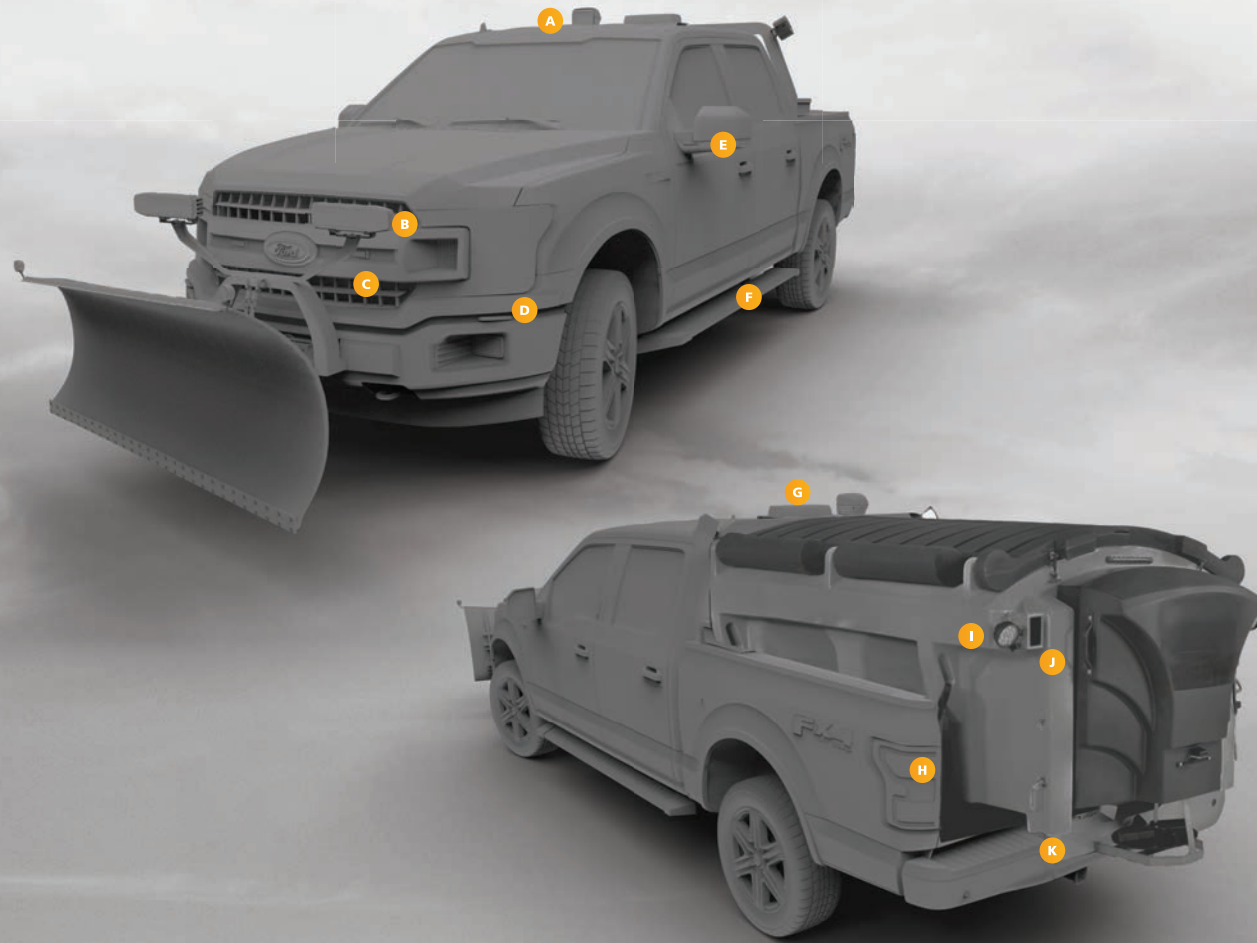




# PICKUP SNOWPLOW PRODUCT APPLICATION WORKSHEET

FICHA DE SOLICITUD DEL PRODUCTO QUITANIEVES DE CAMIONETAS  
FEUILLE DE TRAVAIL D'APPLICATION DE PRODUITS POUR CAMIONNETTES CHASSE-NEIGES

Sales Rep Name \_\_\_\_\_ Sales Rep Phone # \_\_\_\_\_  
Agency Name \_\_\_\_\_ Agency Phone # \_\_\_\_\_ Date \_\_\_\_\_



- |   |   |   |
|---|---|---|
| A | F | K |
| B | G | L |
| C | H | M |
| D | I | N |
| E | J | O |

### NOTES



# HEAVY-DUTY SNOWPLOW PRODUCT APPLICATION WORKSHEET

FICHA DE SOLICITUD DEL PRODUCTO QUITANIEVES DE SERVICIO PESADO  
FEUILLE DE TRAVAIL D'APPLICATION DE PRODUITS POUR CHASSE-NEIGES À USAGE INTENSIF

Sales Rep Name \_\_\_\_\_ Sales Rep Phone # \_\_\_\_\_  
Agency Name \_\_\_\_\_ Agency Phone # \_\_\_\_\_ Date \_\_\_\_\_



- |   |   |   |
|---|---|---|
| A | F | K |
| B | G | L |
| C | H | M |
| D | I | N |
| E | J | O |

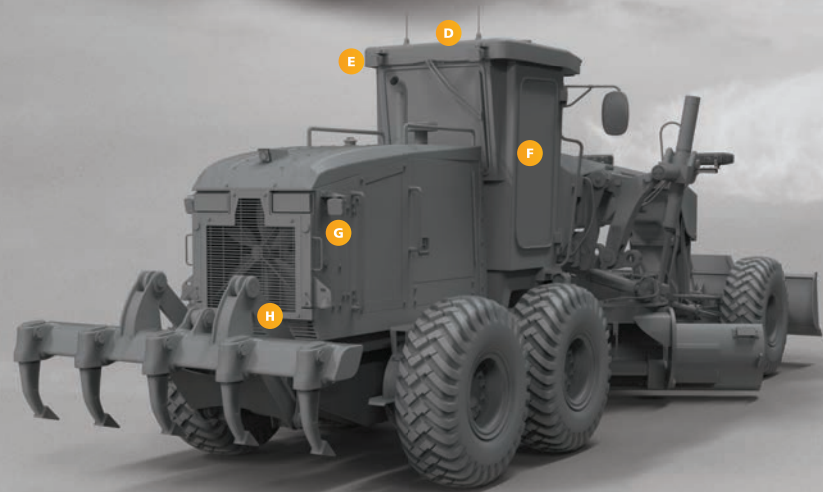
### NOTES



# GRADER PRODUCT APPLICATION WORKSHEET

MOTONIVELADORA FICHA DE SOLICITUD DE PRODUCTOS  
NIVELEUSE FEUILLE DE TRAVAIL D'APPLICATION DE PRODUITS

Sales Rep Name \_\_\_\_\_ Sales Rep Phone # \_\_\_\_\_  
Agency Name \_\_\_\_\_ Agency Phone # \_\_\_\_\_ Date \_\_\_\_\_



- |   |   |   |
|---|---|---|
| A | F | K |
| B | G | L |
| C | H | M |
| D | I | N |
| E | J | O |

### NOTES

Blank white box for notes.



Lined area for notes.



DISTRIBUTED BY



**ECCOESG.COM**

© 2020 ELECTRONIC CONTROLS COMPANY. ALL RIGHTS RESERVED. ECSNOWPLOW20  
833 WEST DIAMOND STREET, BOISE, ID 83705  
800-635-5900 | SALES@ECCOGROUP.COM