



# *Requirements Specification: Professional Users*

*Version 1.4*

*Redacted / modified excerpts to follow... ..*

## 1. Treatment Plan

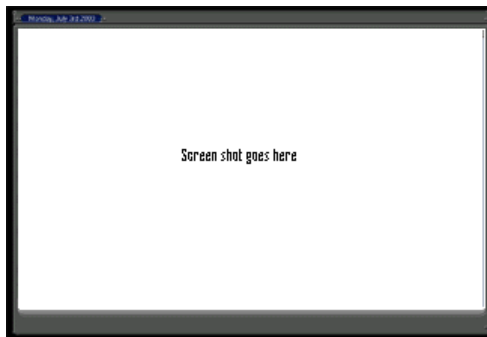
### 1.1. Medication

**Description:** The Physician can prescribe medications for their patients, including prescription details and notes. The Physician can also Discontinue Drug from this area.

**Content:** Currently Prescribed Drugs, System Drugs, Favorite Drugs. Dosage, Doses/Day, Refills, No Substitutions, Frequency, Count, Half Tablet, With Food, No Food, Instruction 4, , Instruction 5, , Instruction 6, Notes

**Functionality:** The Physician selects a drug from the system list or their favorites list, checks the appropriate details, adds a note, then clicks Prescribe Drug. The Physician can also click Discontinue Drug if they no longer want a patient to take that drug. The discontinued drug will remain in the patient's List of Currently Prescribed Drugs but will include the date and an indicator that the drug has been discontinued.

**Buttons:** Prescribe Drug and Discontinue Drug.



#### Medication

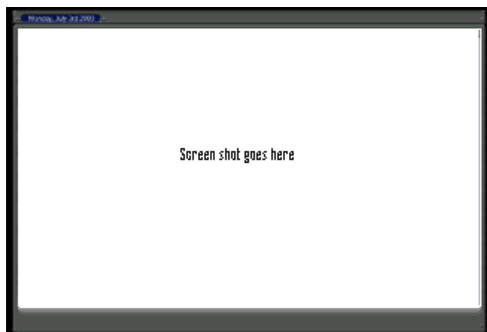
### 1.2. Diet

**Description:** The Physician can recommend a diet plan for their patients, as well as enter additional notes.

**Content:** Select Diet Plan (Diet Plans A – E), Plan Description (Read-only text box), Additional Notes (text entered by Physician).

**Functionality:** The Physician selects a Diet Plan, adds notes (if desired), then clicks OK to save the information to the system. The Physician can also click View History to see previously recommended Diet Plans.

**Buttons:** View History, OK, Cancel



#### Diet

.....

### 3. Previous Tests

**Description:** The Physician can view a table with test names down side and dates across top.

**Content:** Tests and dates with selected patient's data.

**Functionality:** The Physician clicks a specific test or date to see trends of the respective data.



**Previous Tests**

### 4. Current Tests

**Description:** The Physician can view current test results for their patients.

**Content:** Determined by test taken.

**Functionality:** The Physician views test results. They can also click the View Previous Tests to see previous test results.



**Current Tests**

.....

## *Advisor Nurse Specification*

### 1. Website Description

The website for the Advisor Nurse is identical to the website for the Physician, with the exceptions described below.

### 2. Functional Descriptions

#### 2.1. General Navigation

The navigation of the website is designed to help the Advisor Nurse assist the Physician in treating patients and conducting daily business. The features of the system for the Advisor Nurse are identical to the features for the Physician with the following exceptions:

##### 2.1.1. Primary Navigation Bar

The Advisor Nurse does not have Preferences on their Primary Navigation Bar.

##### 2.1.2. Secondary Navigation Bar

The Advisor Nurse does not have a Front Desk on their Secondary Navigation Bar.

##### 2.1.3. Patient Buttons

The Advisor Nurse Approve button is different than the Physician Approve button (described below). Also, the Advisor Nurse does not have a Print Button.

#### 2.2. Patient Buttons (Stage View)

Patient buttons are in the center section of the Composite, just below the Current Test results.

##### 2.2.1. Approve

**Description:** After viewing/modifying all the treatment information for a patient, the Advisor Nurse must click Approve for the information to be saved to the system and be sent to the physician for their approval. Until the Advisor Nurse approves the information, it will only be saved on their machine. However, the Advisor Nurse can only Approve one time per patient session. Once the information is saved, the Advisor Nurse cannot save it again to send it to the physician.

**Functionality:** The Advisor Nurse clicks the Approve button and the information is saved to the system and sent to the physician.