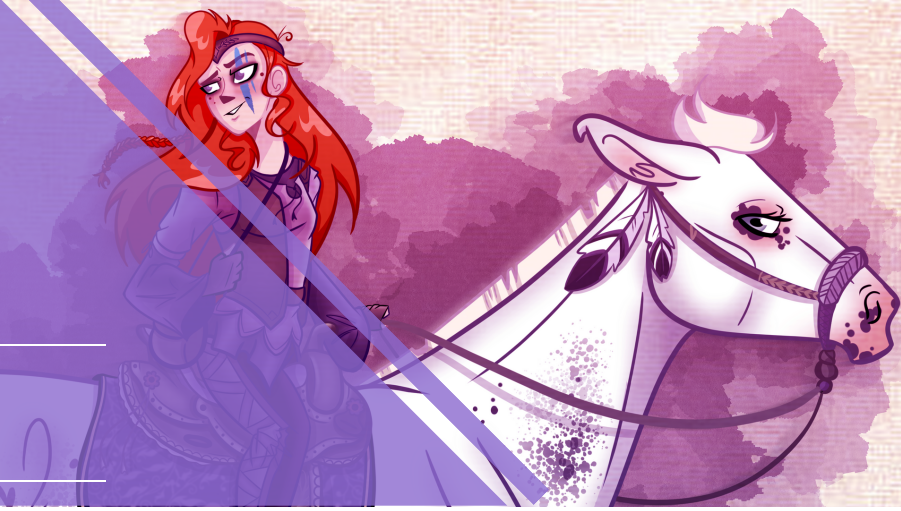


# EMMA JEZEK

CHARACTER ILLUSTRATOR  
MODEL EQUINE ARTIST



## ABOUT

My lifelong passion for both art and horses culminates in my ability to create colorful characters and uniquely designed model equines.

## CONTACT DETAILS

leijxna@gmail.com  
www.emjezekillustration.com  
Instagram: @emjezekillustration

## AWARDS & ACHIEVEMENTS

- NMU Dean's List 2016 - 2021
- Marquette County 4H Member of the Year 2016
- Marquette County 4H Leader of the Year 2019

## EXHIBITIONS

- NMU Student Art Gallery  
"Bridges Not Borders" juried show 2018
- Marquette County Fair 2016-2019

## PROFESSIONAL DEVELOPMENT

- Blue Lake Fine Arts Camp 2015
- Digital Art course w/Pernille Oerum 2017
- Storyboarding for Animation course w/Pete Michaels 2017
- Fundamentals of Animation course w/Aaron Blaise 2020
- Working towards certification in Toon Boom Storyboard Pro 2020

## PROFESSIONAL EXPERIENCE

### Model Equine Artist / DAH Creative Team / Illustrator

THE PETER STONE COMPANY  
SHIPSHEWANA, IN  
MAY 2018 - PRESENT

- Designs and paints model horses in runs of 50 or less
- Responsible for creating all illustrated assets of the "Design A Horse" program
- Works closely with management and company heads to design and plan advertising, major events, and various other projects

### Model Equine Artist / Illustrator / YouTube Creator

PAINT PONY STUDIOS  
NEGAUNEE, MI  
APRIL 2016 - PRESENT

- Designs and paints one of a kind model horses
- Creates illustrations used for advertising and merchandise
- Creates and edits YouTube videos

## GENERAL EXPERIENCE

### Secretary / Social Media Manager

SCHWALBACH KITCHENS  
MARQUETTE, MI  
JANUARY 2015 - PRESENT

### Leader / Educator

MANES & TAILS MODEL HORSE 4H CLUB  
MARQUETTE, MI  
JANUARY 2017 - PRESENT

## EDUCATION

### Northern Michigan University

BACHELOR OF FINE ARTS (ILLUSTRATION)— 2016 - 2021  
- Study focus: Character illustrations with personality

### United States Pony Club

ENGLISH RIDING / EVENTING— 2005 - 2015

- Achieved C1 level; multi-qualifier for USPC Champs in Quiz

# EMMA JEZEK

CHARACTER ILLUSTRATOR  
MODEL EQUINE ARTIST

## PROFESSIONAL REFERENCES

### Steven Hughes

ASSOCIATE PROFESSOR  
NORTHERN MICHIGAN UNIVERSITY  
sthughes@nmu.edu

### Peter Stone

FOUNDER & OWNER  
THE PETER STONE COMPANY  
(260) 348-3523

### Tracy Wascom

ASSOCIATE PROFESSOR  
NORTHERN MICHIGAN UNIVERSITY  
twascom@nmu.edu

## CHARACTER REFERENCES

### Amy Showalter

SALES & SOCIAL MEDIA  
THE PETER STONE COMPANY  
service@stonehorses.com

### Liana Graves

MSU EXTENSION OFFICER  
MARQUETTE COUNTY 4H PROGRAM COORDINATOR  
deisenro@msu.edu

