

LA GRIGLIA DI DANTE

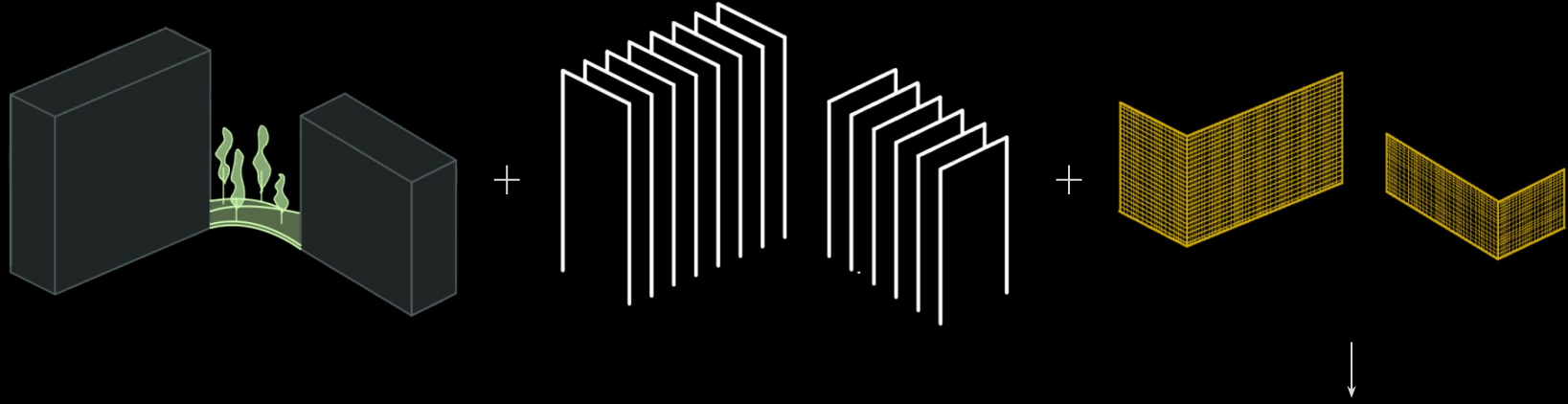
PIAZZA DANTE RE-DEVELOPMENT

Ana Cristina Olivares

Sebastian Caldas

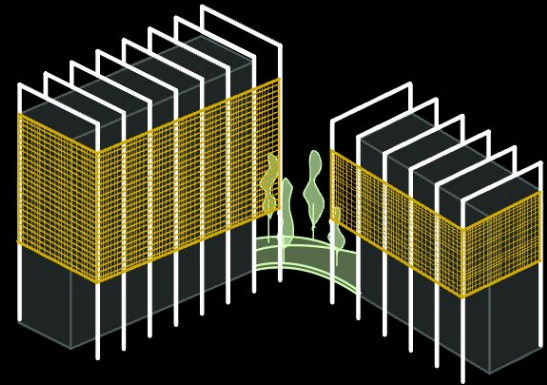


Scheme/Concept



The surrounding facades of Piazza Dante creates a fabric of columns and datums that show the history of Genoa in the early 20th century, showing symmetry and order. We are proposing a new way to look at this order and introduce a new form of fabric creating the order of column and datums through metal supports and a gridded facade.

The space between the facade and the building structure creates a social space that is also like an insulating blanket using vegetation. This new gridded facade creates tension for the viewer framing views and created a hierarchy of privacy. Creating a similar language with a new modern twist bringing Genoa into a more modern era without losing the history it carries.



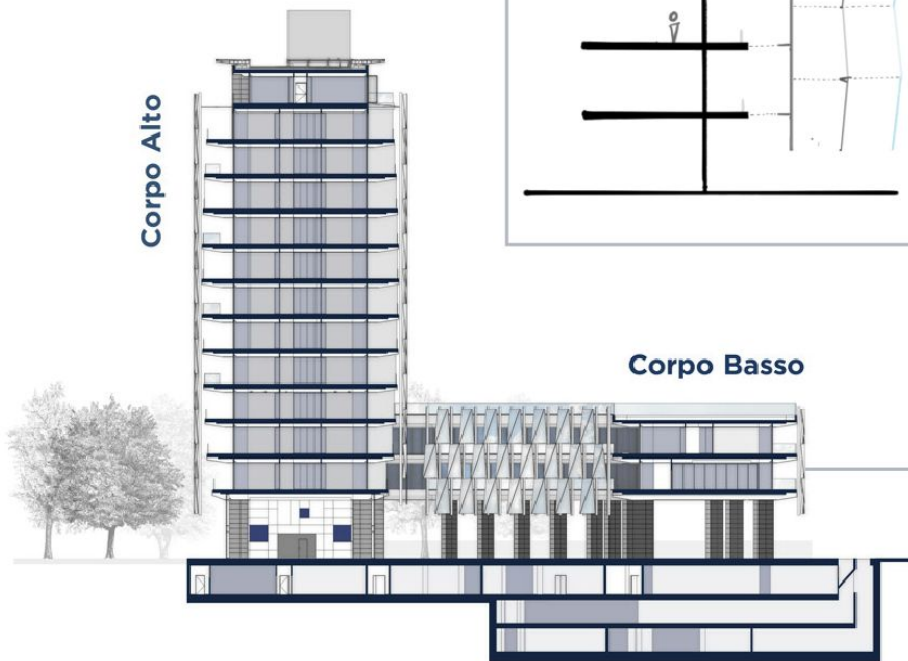
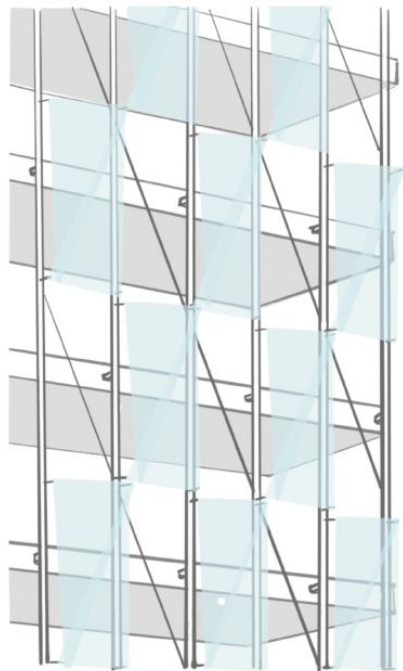
Precedent Projects



De Castilla 23

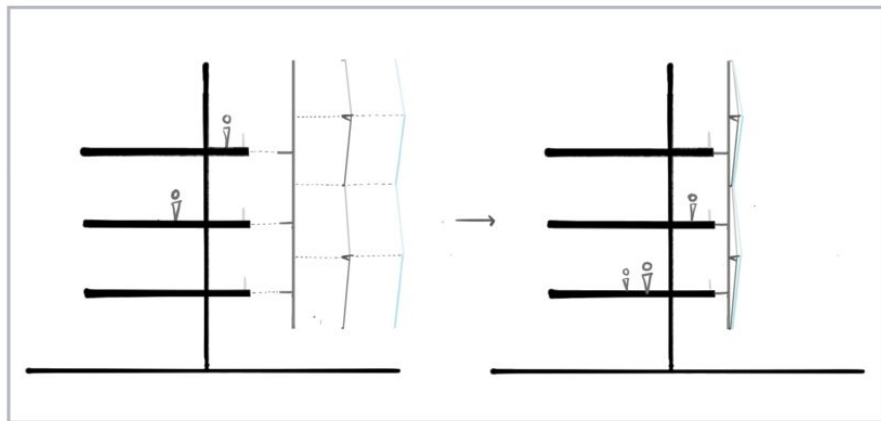
Designed by Urban Up Projects

Located in Milan, Italy



Corpo Alto

Corpo Basso

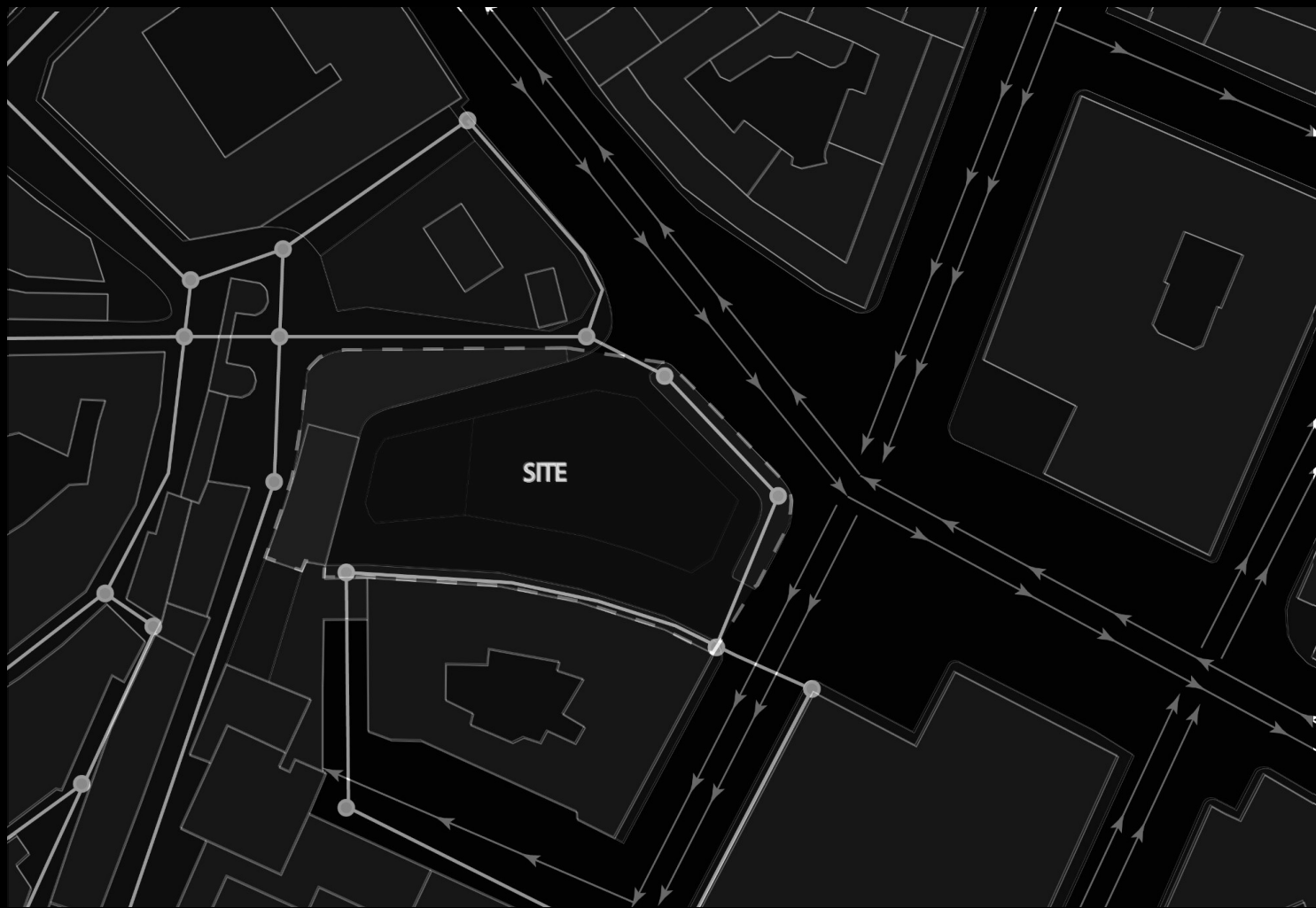


The facade consist of a frame that provides support for the glass making it seem super light weight.

The thin facade allows ventilation through the openings created by the patterns.

The steel frame consists of vertical and diagonal members. A triangular glass plane is attached to a very thin steel frame on two of the three sides. This then attaches to the main steel frame.

Circulation



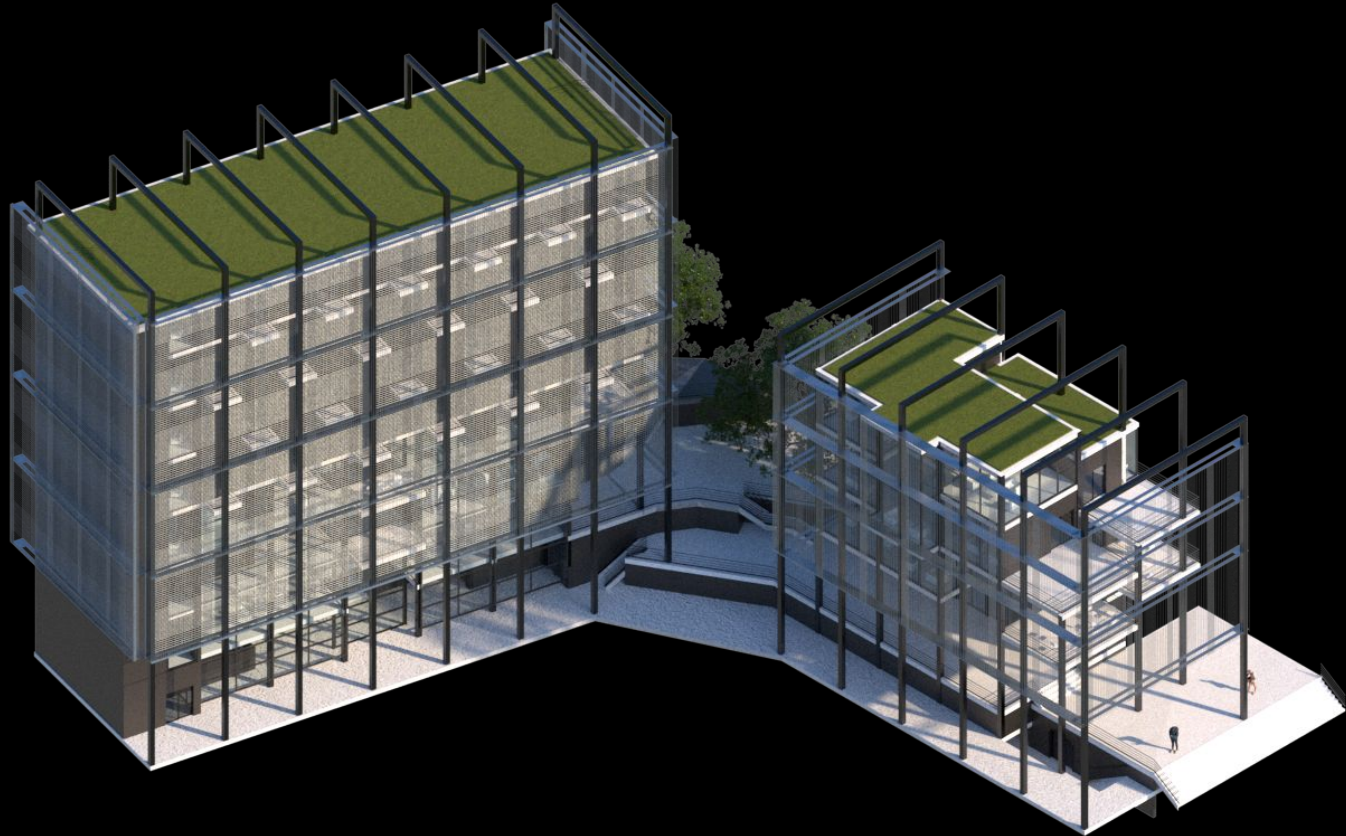
CAR PATH

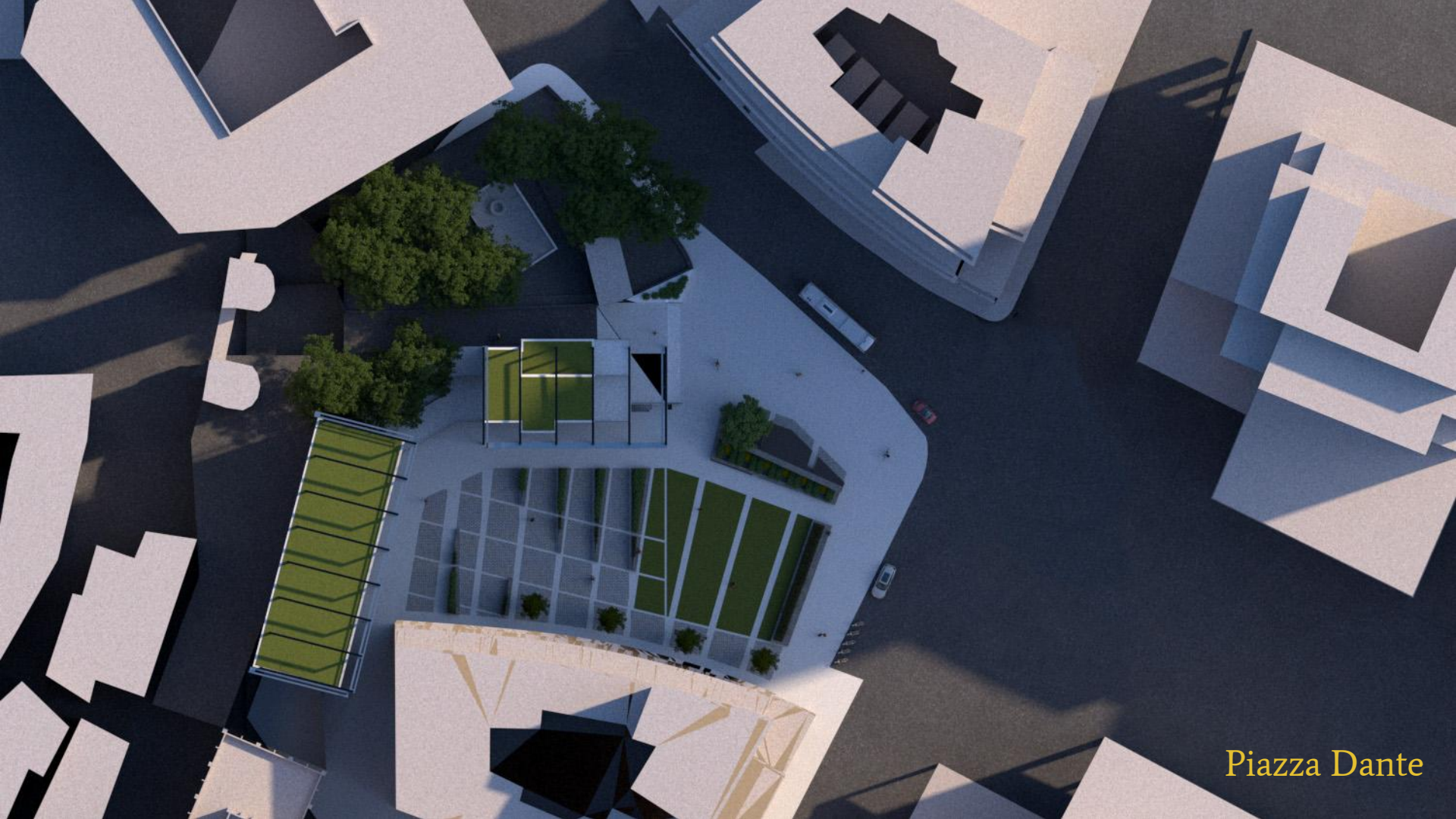


PEOPLE PATH



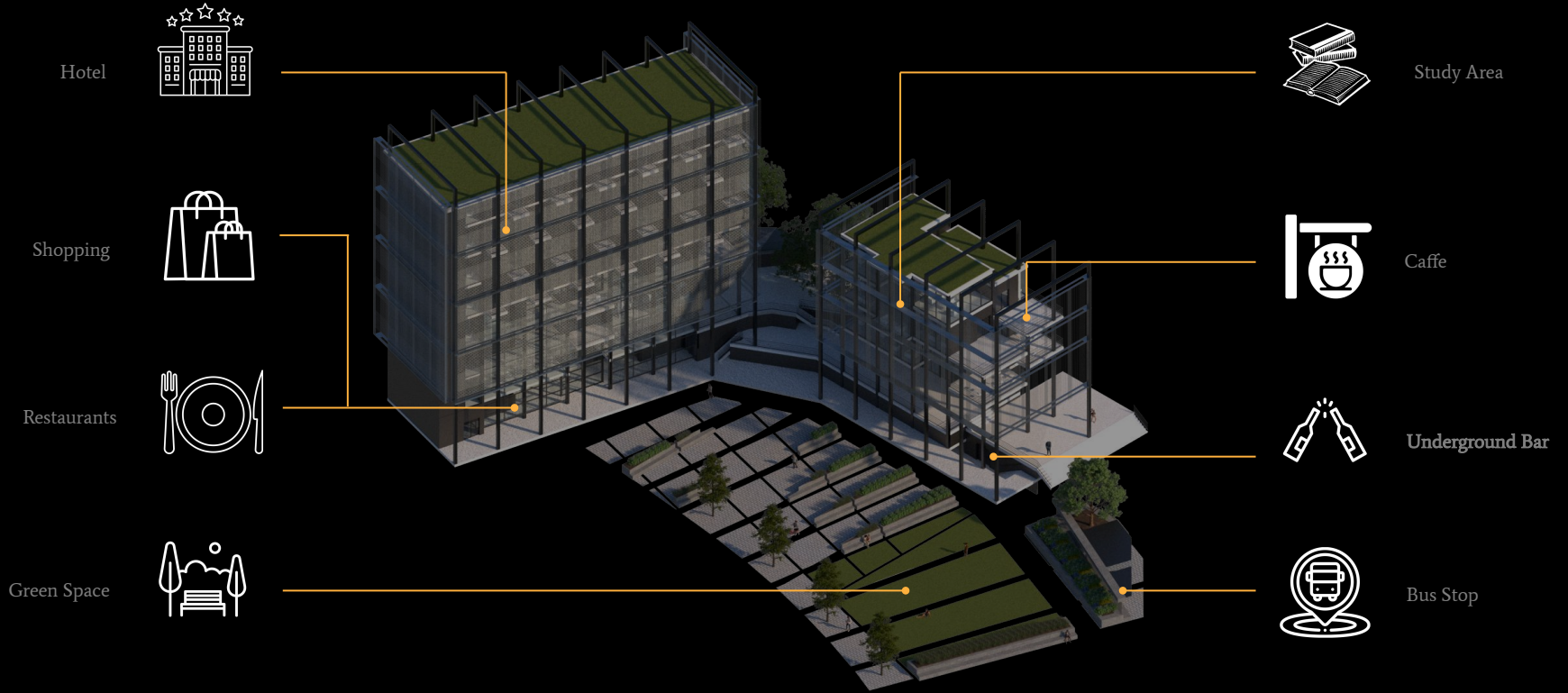
Massing



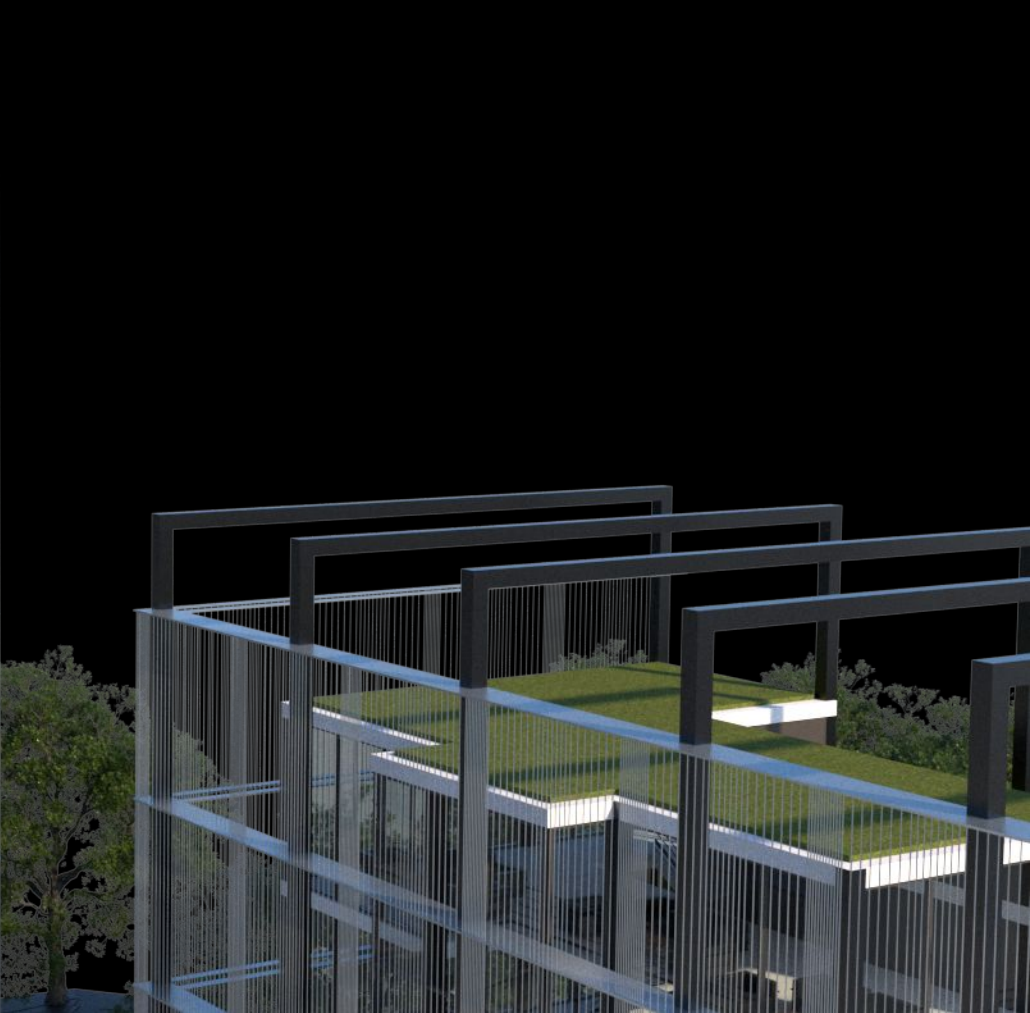


Piazza Dante

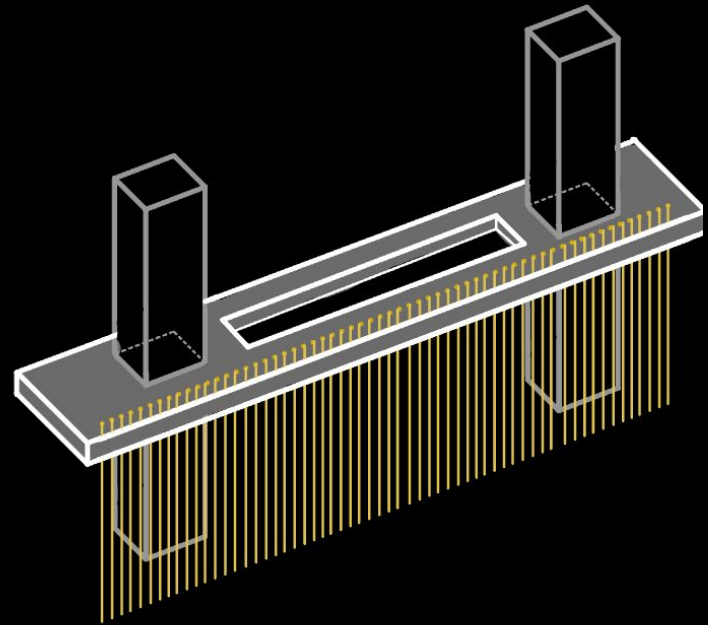
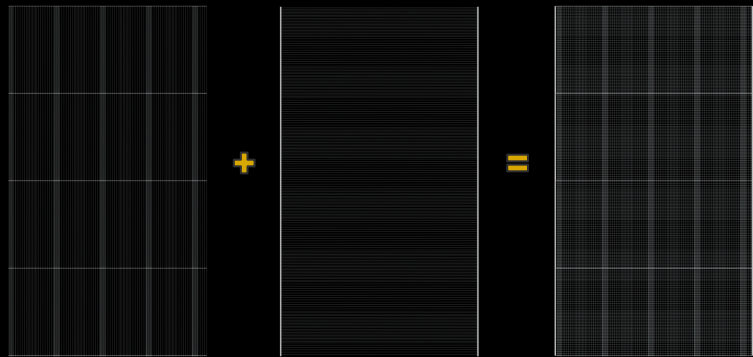
Program



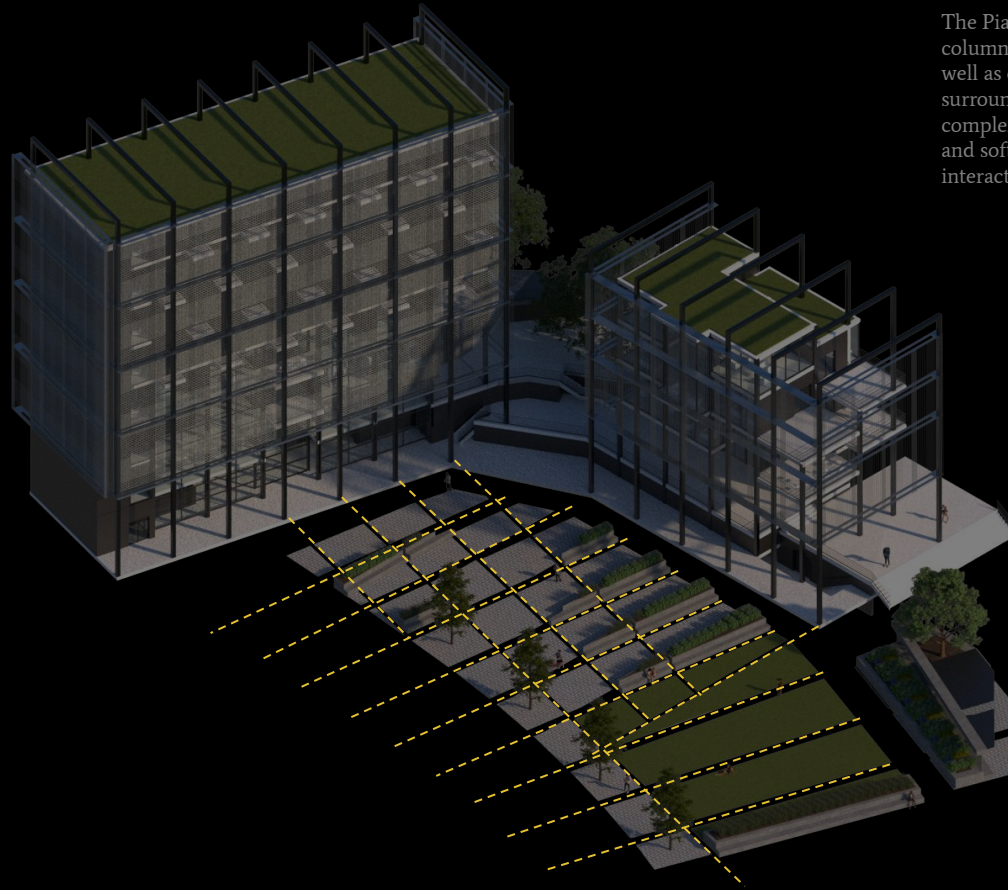
Tension Cord Facade Detail



Tension Cord Facade Detail



Piazza Design



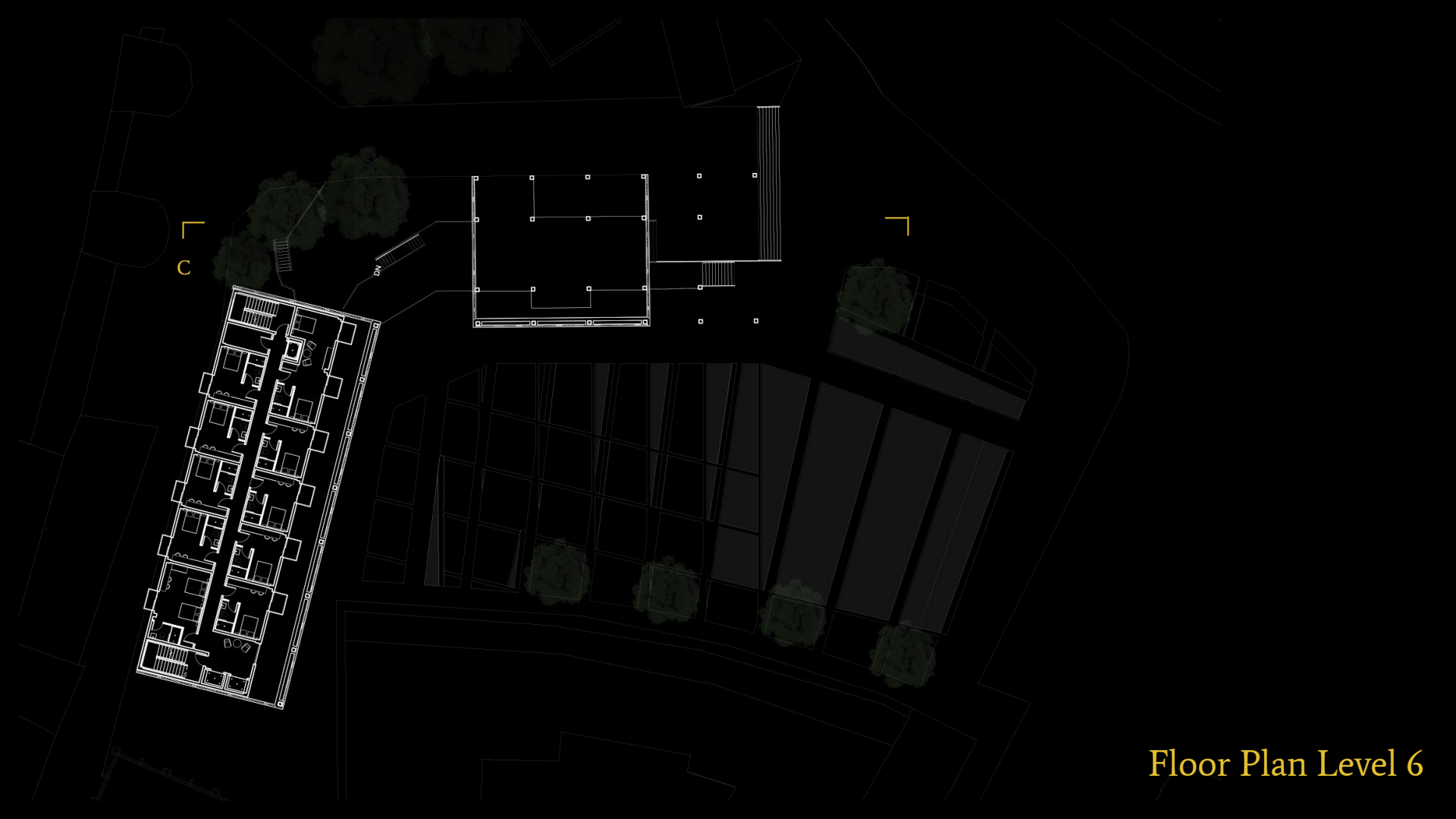
The Piazza was inspired by the new columns introduced by our project as well as columns of the existing surrounding building. Creating a complex grid that consists of hardscape and softscape and gives social interaction back to this forgotten piazza.



Floor Plan Level 2

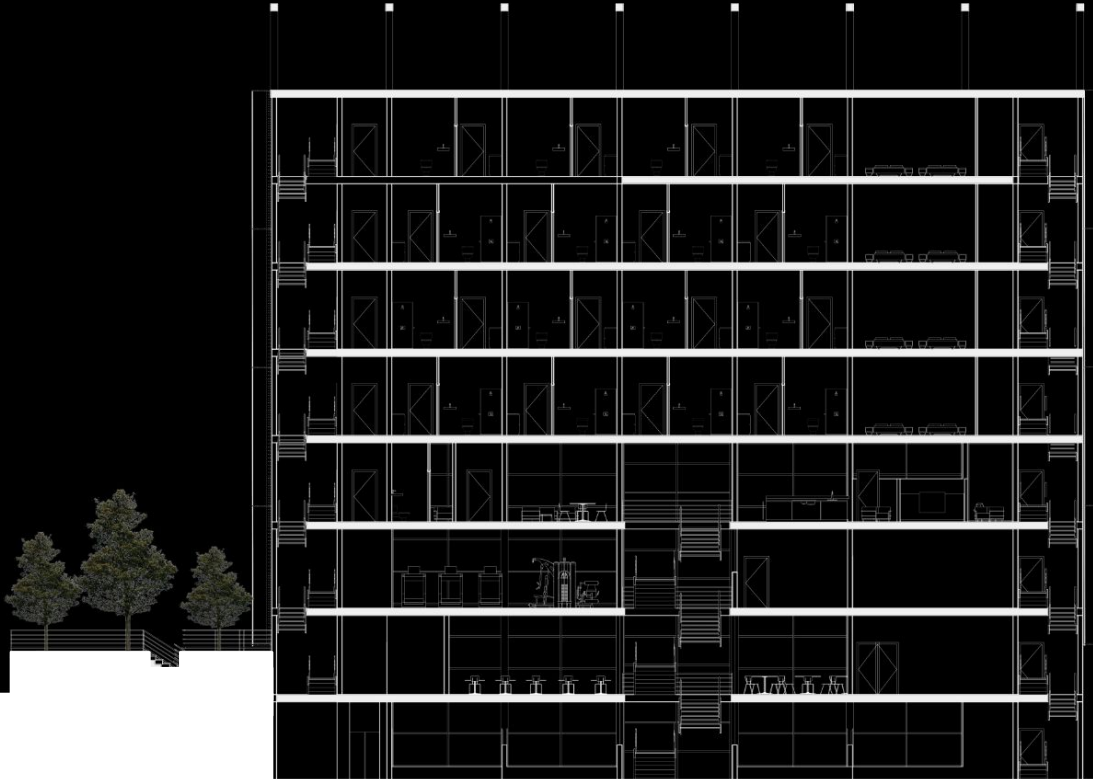


Floor Plan Level 4

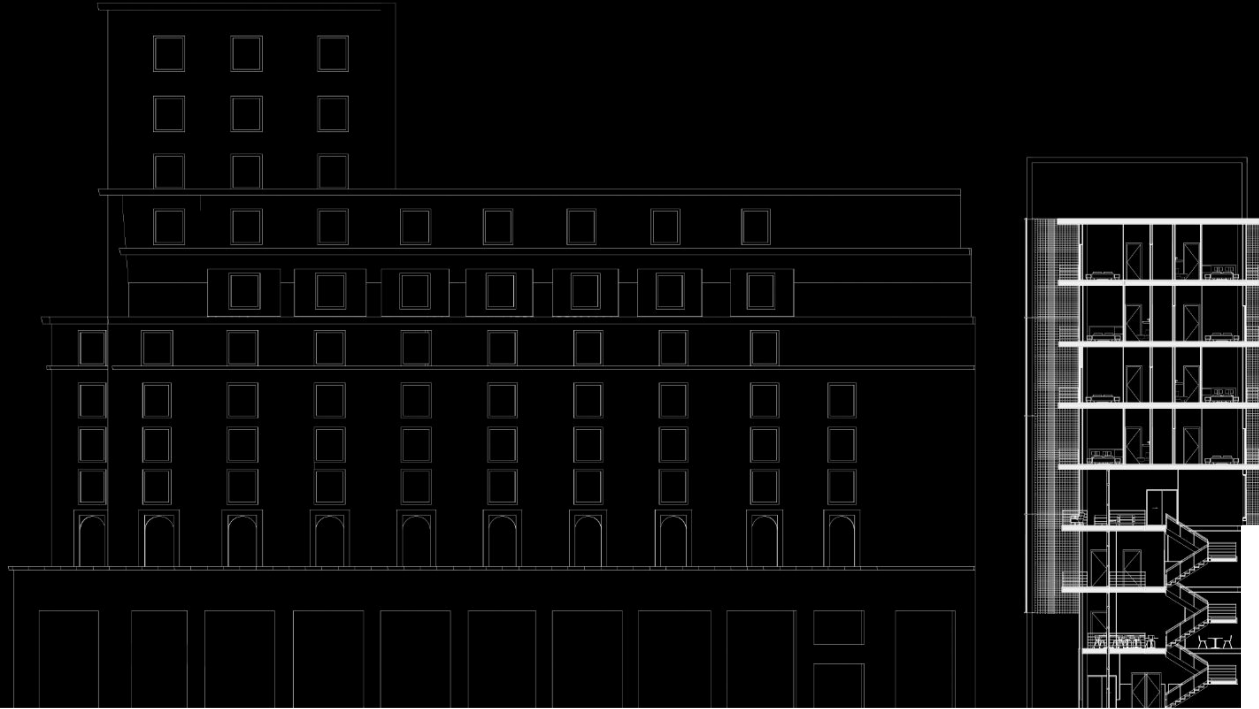


Floor Plan Level 6

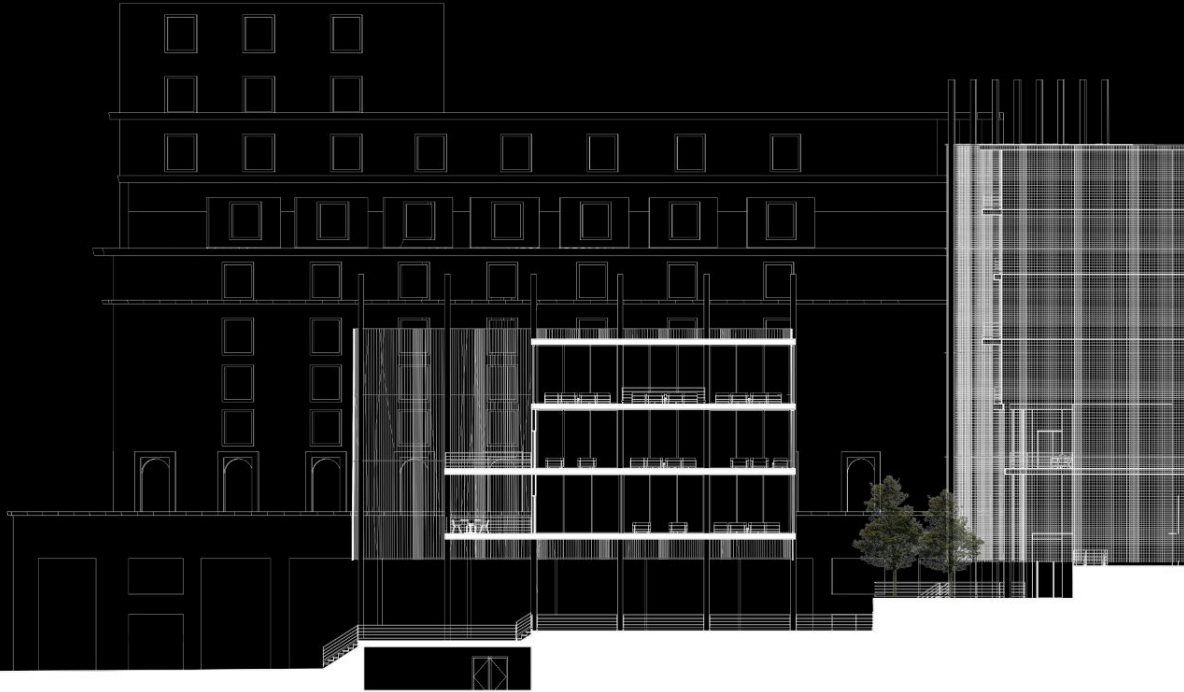
Long Section A



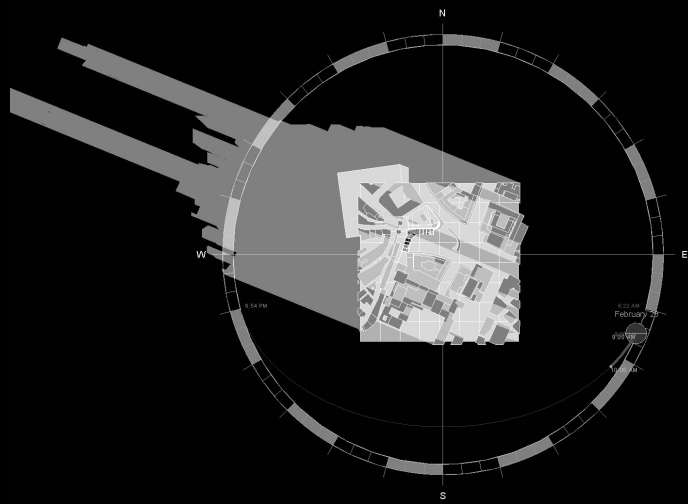
Long Section B



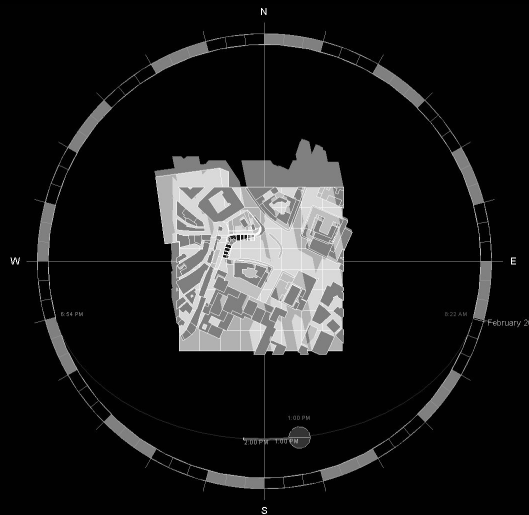
Long Section C



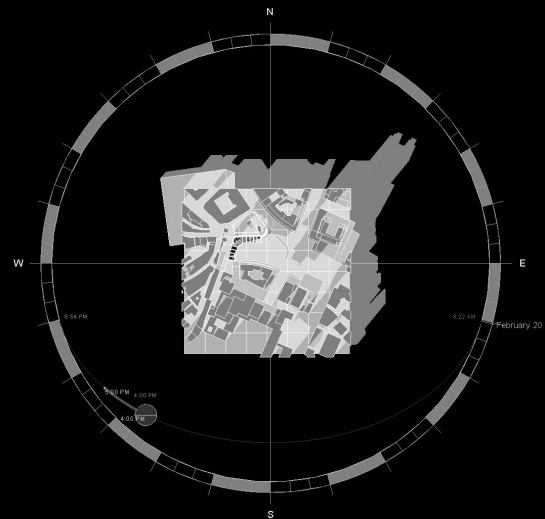
Sun Diagram



9:00 am



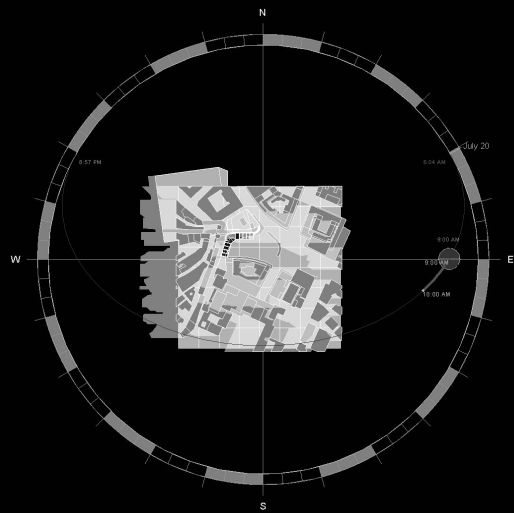
1:00 pm



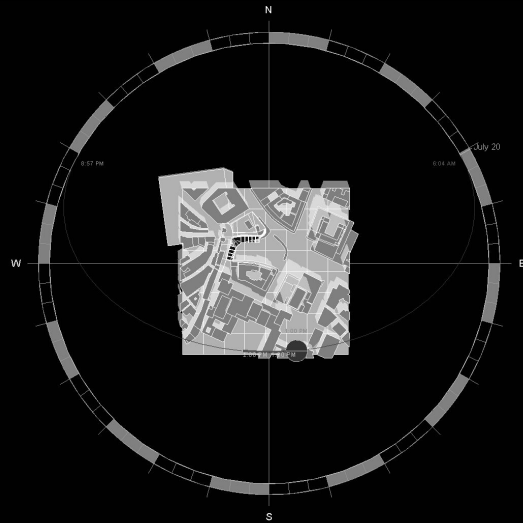
4:00 pm

February

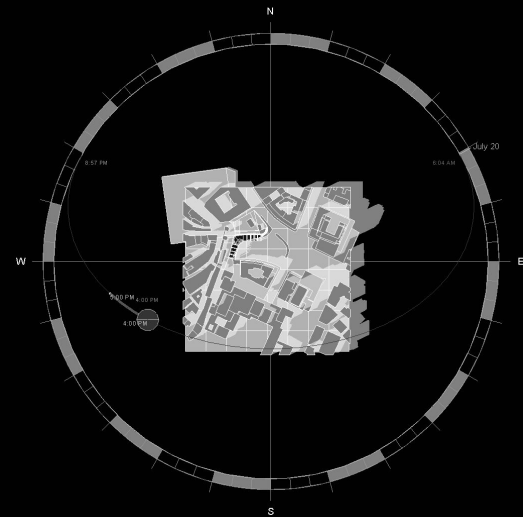
Sun Diagram



9:00 am



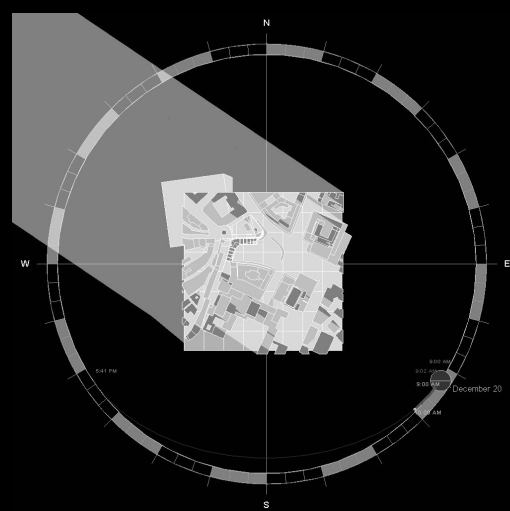
1:00 pm



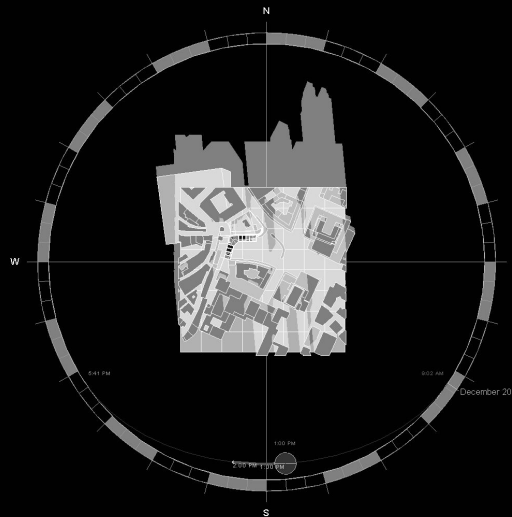
4:00 pm

July

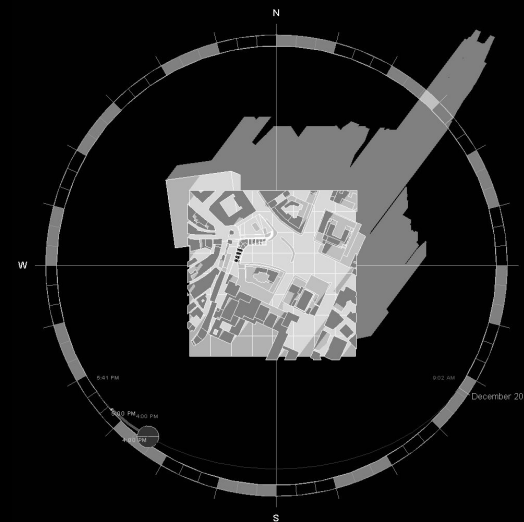
Sun Diagram



9:00 am



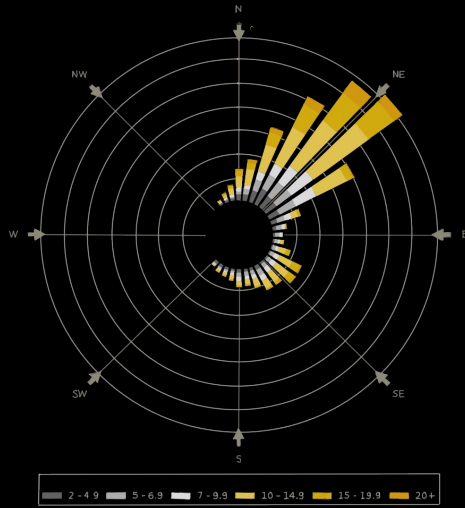
1:00 pm



4:00 pm

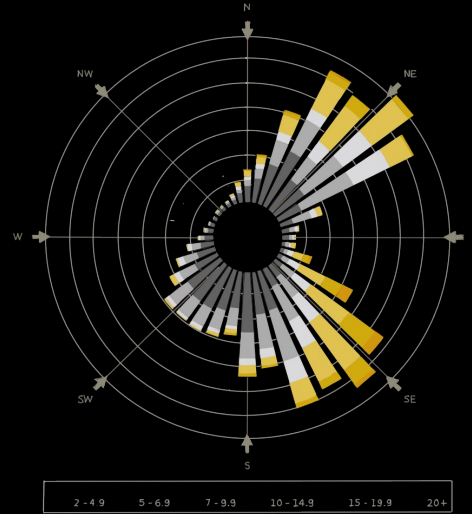
December

Wind Diagram



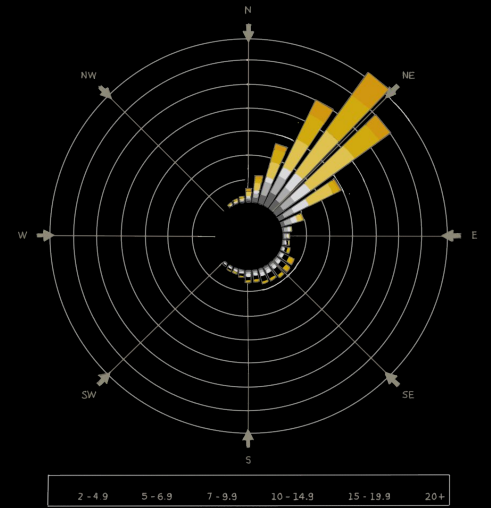
February

0-27 K



July

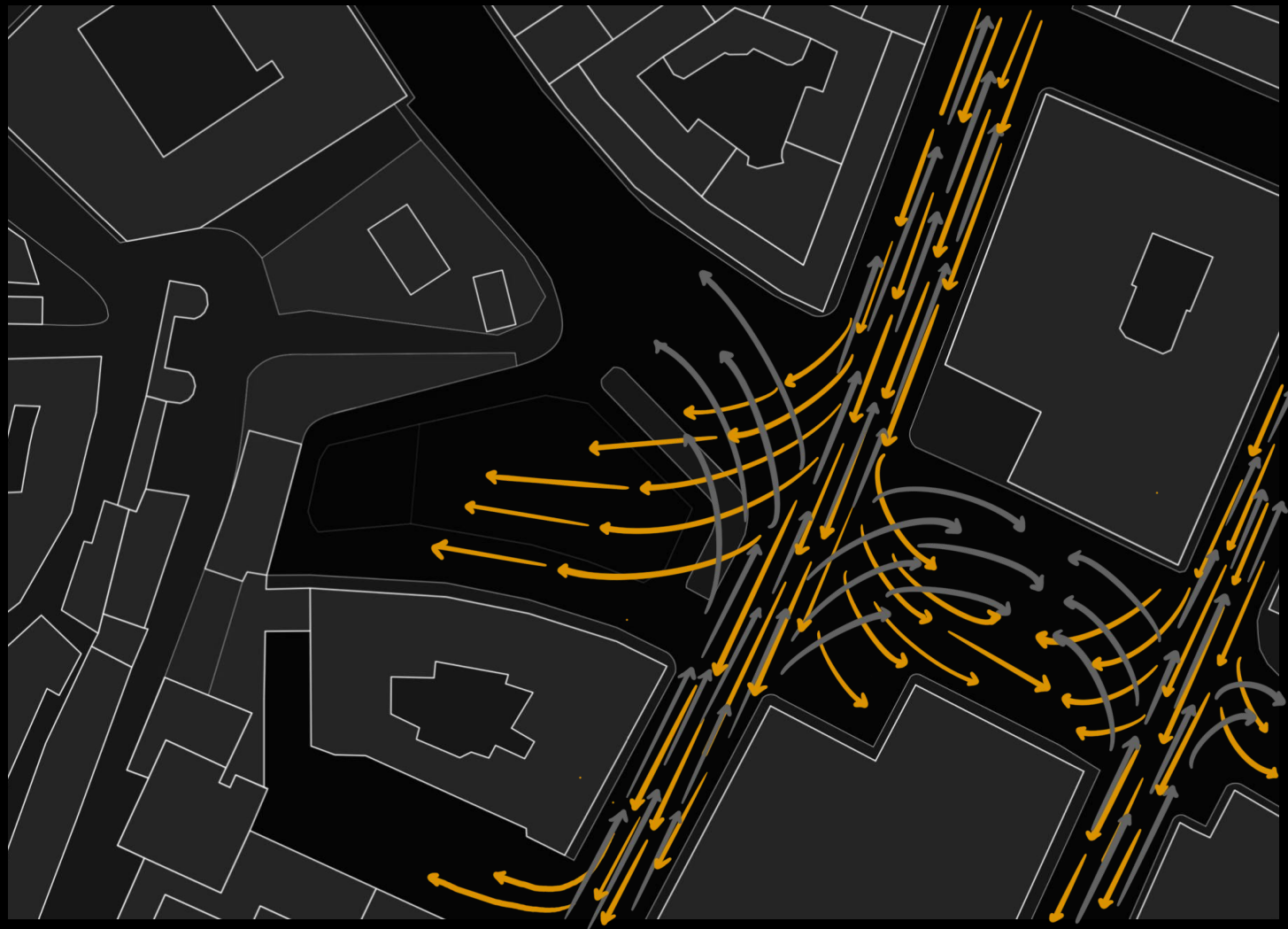
0-16 K



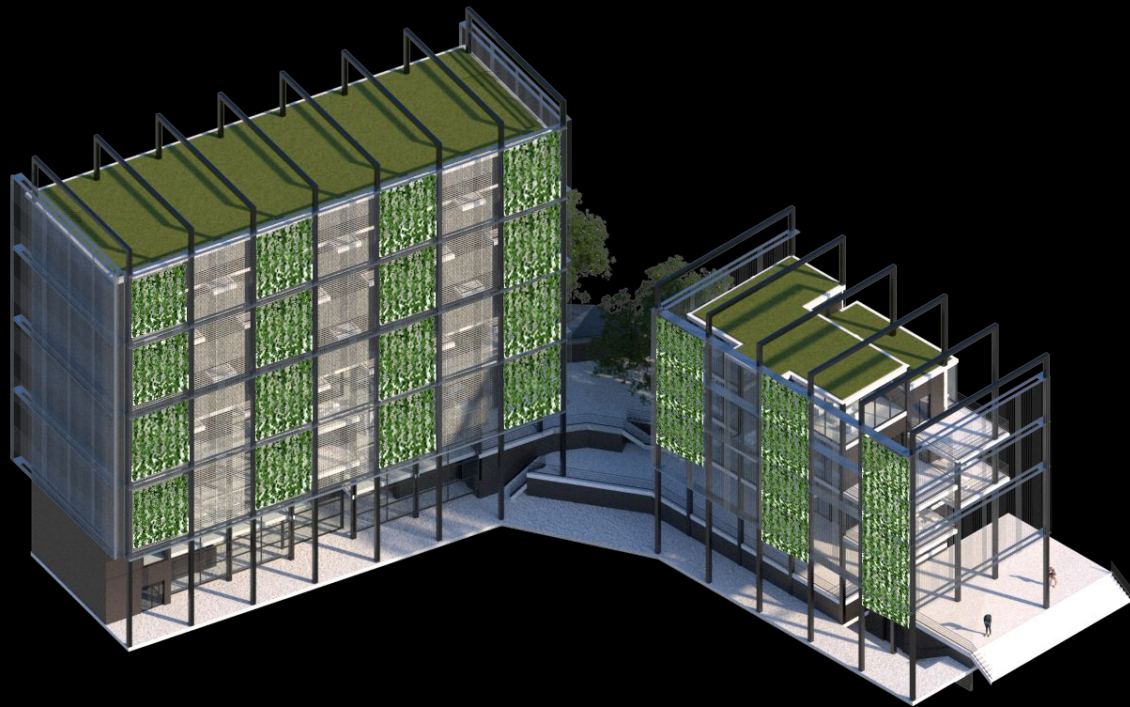
December

0-27 K

Wind Analysis



Environmental Systems



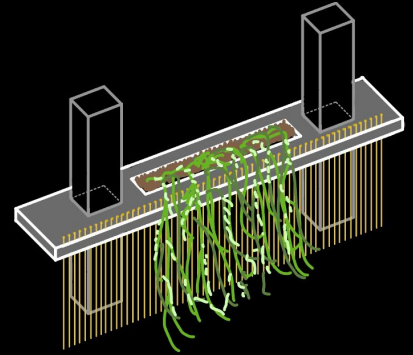
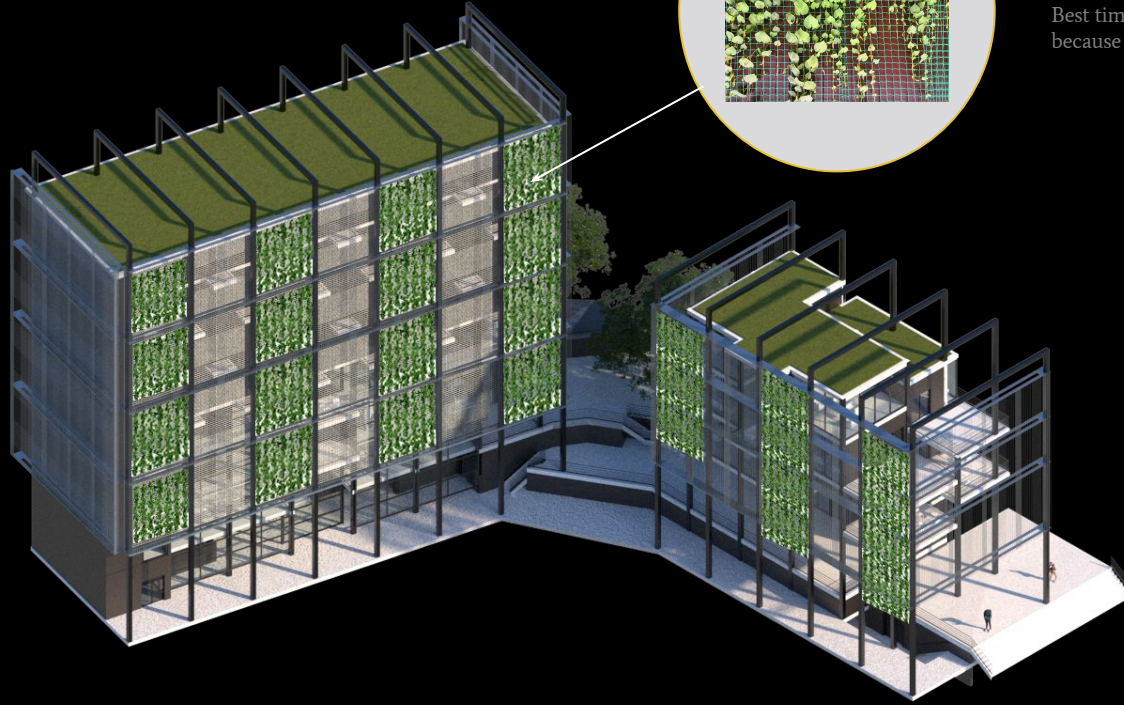
Sun Solution

Vegetation

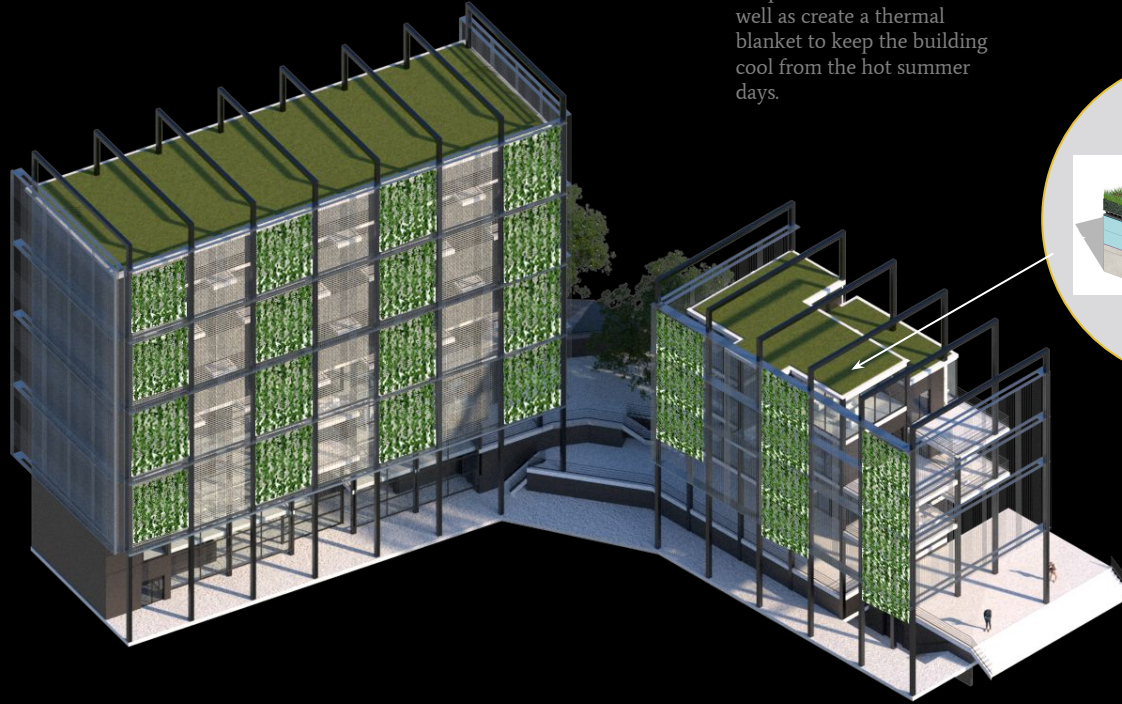


Creates a thermal blanket against the sun based on the amount of growth in vegetation

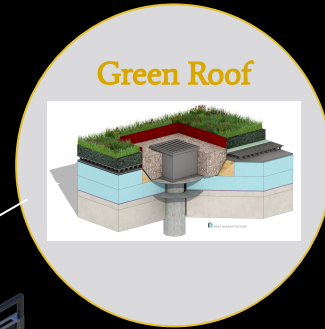
Best time to grow would be the spring because of the climate



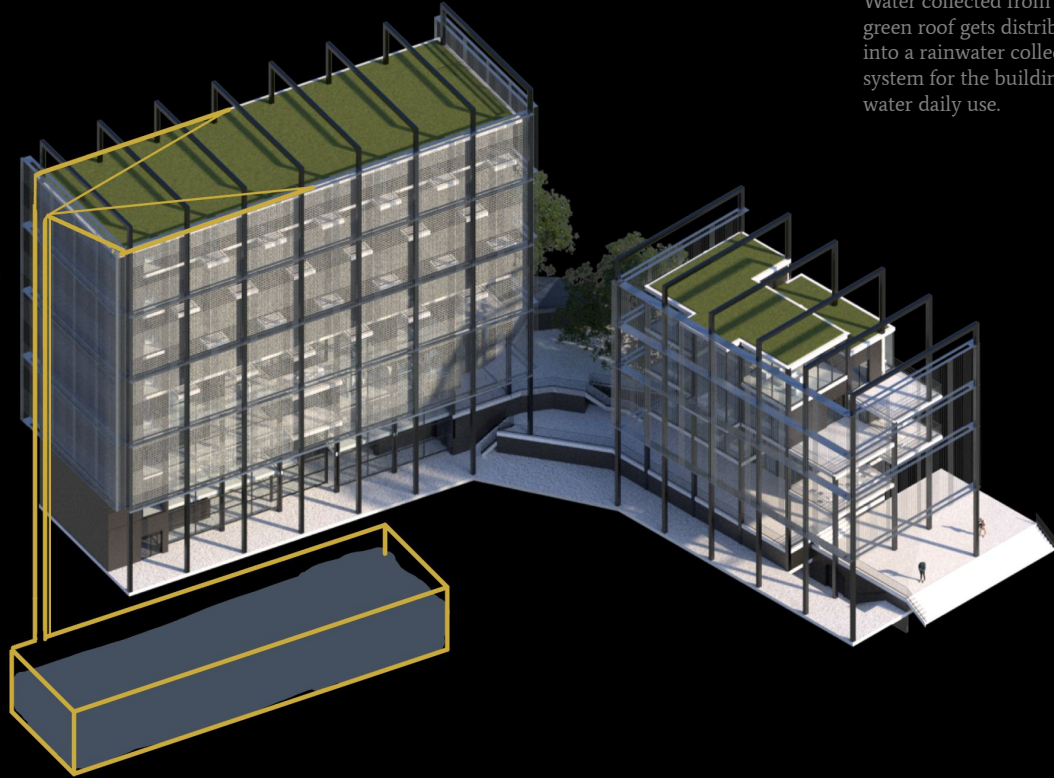
Sun Solution



Helps collect rainwater, as well as create a thermal blanket to keep the building cool from the hot summer days.



Rainwater Collection



Water collected from the green roof gets distributed into a rainwater collection system for the buildings gray water daily use.

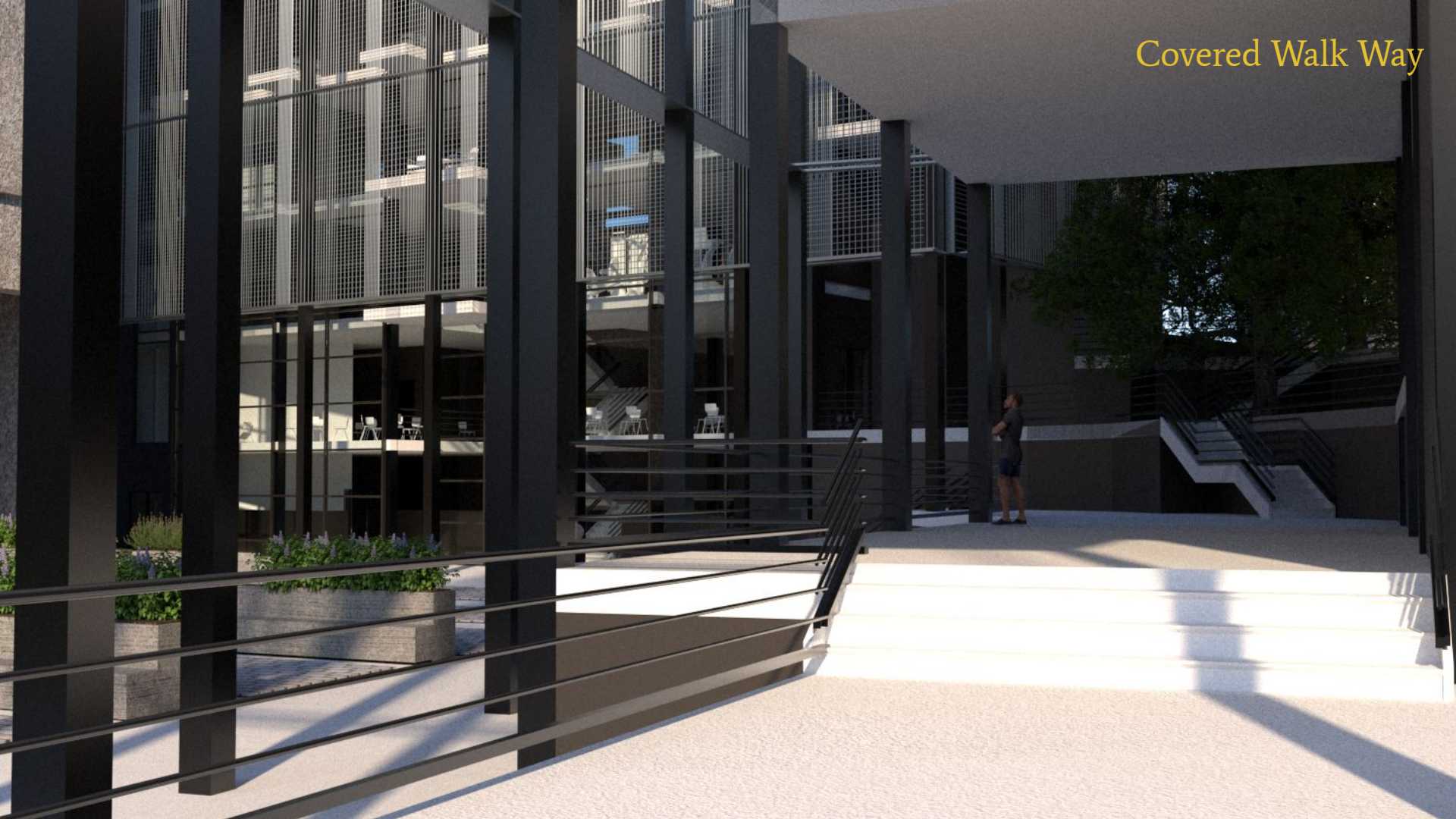


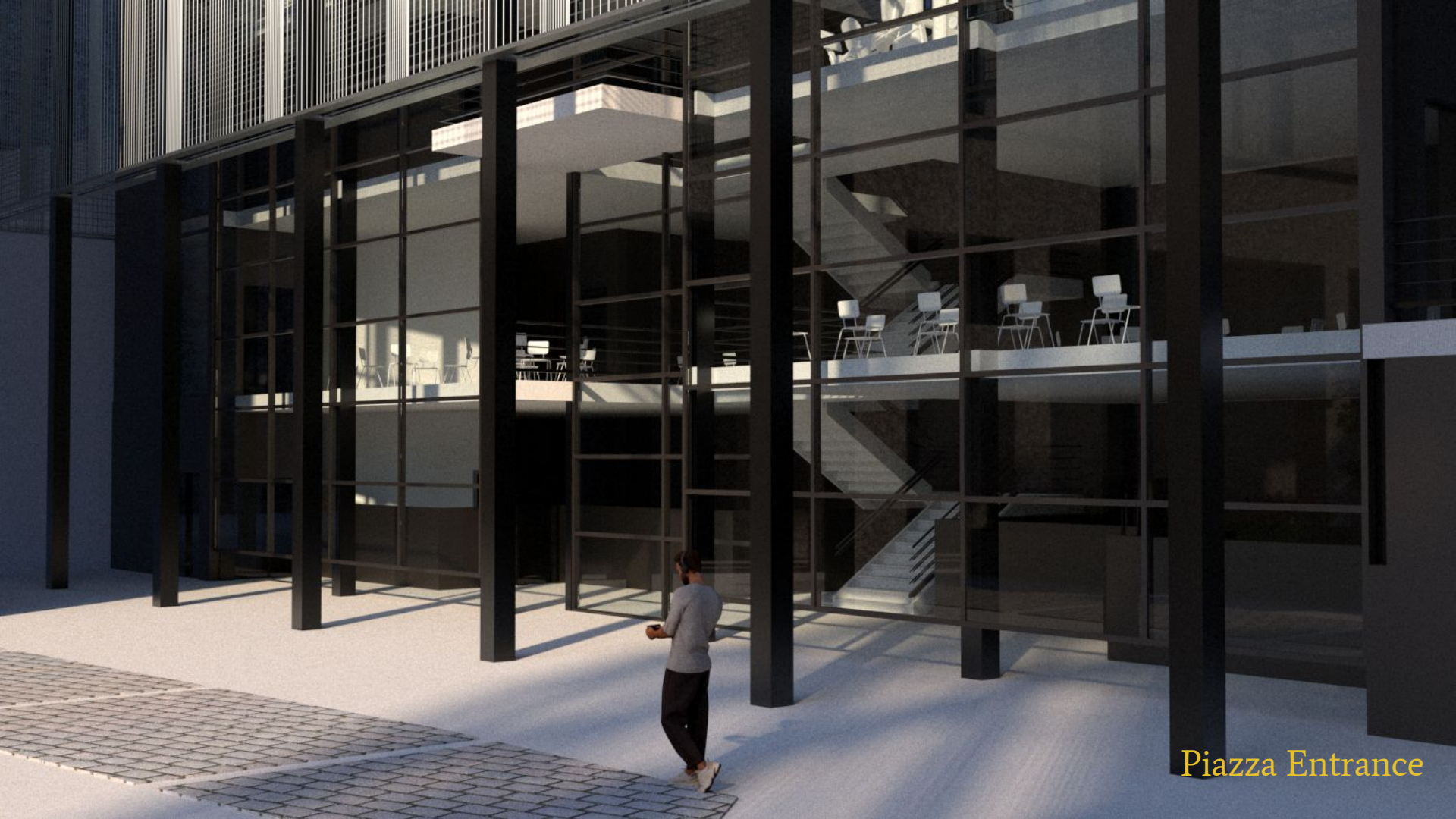
Piazza Dante



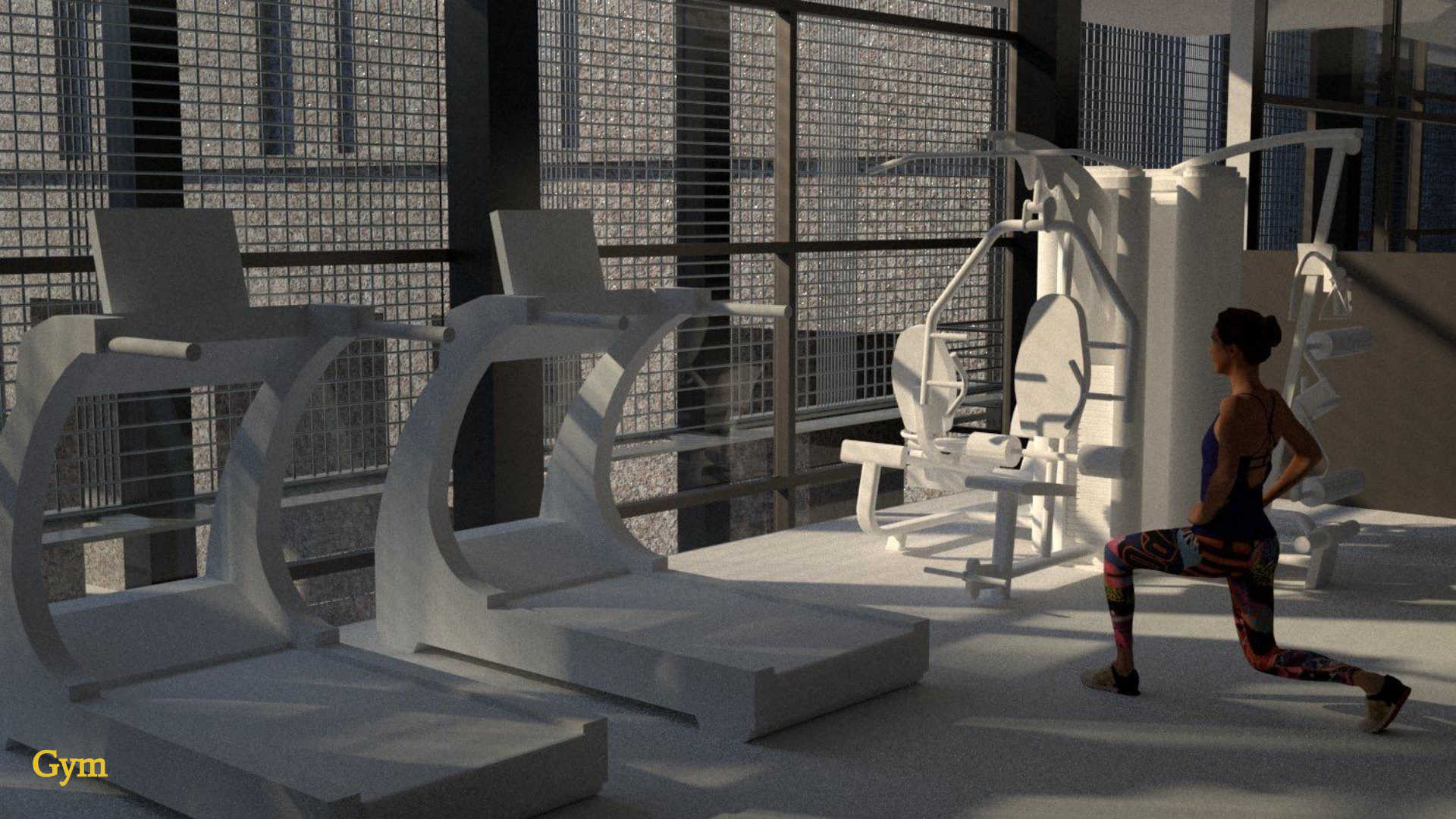
Piazza Dante

Covered Walk Way





Piazza Entrance



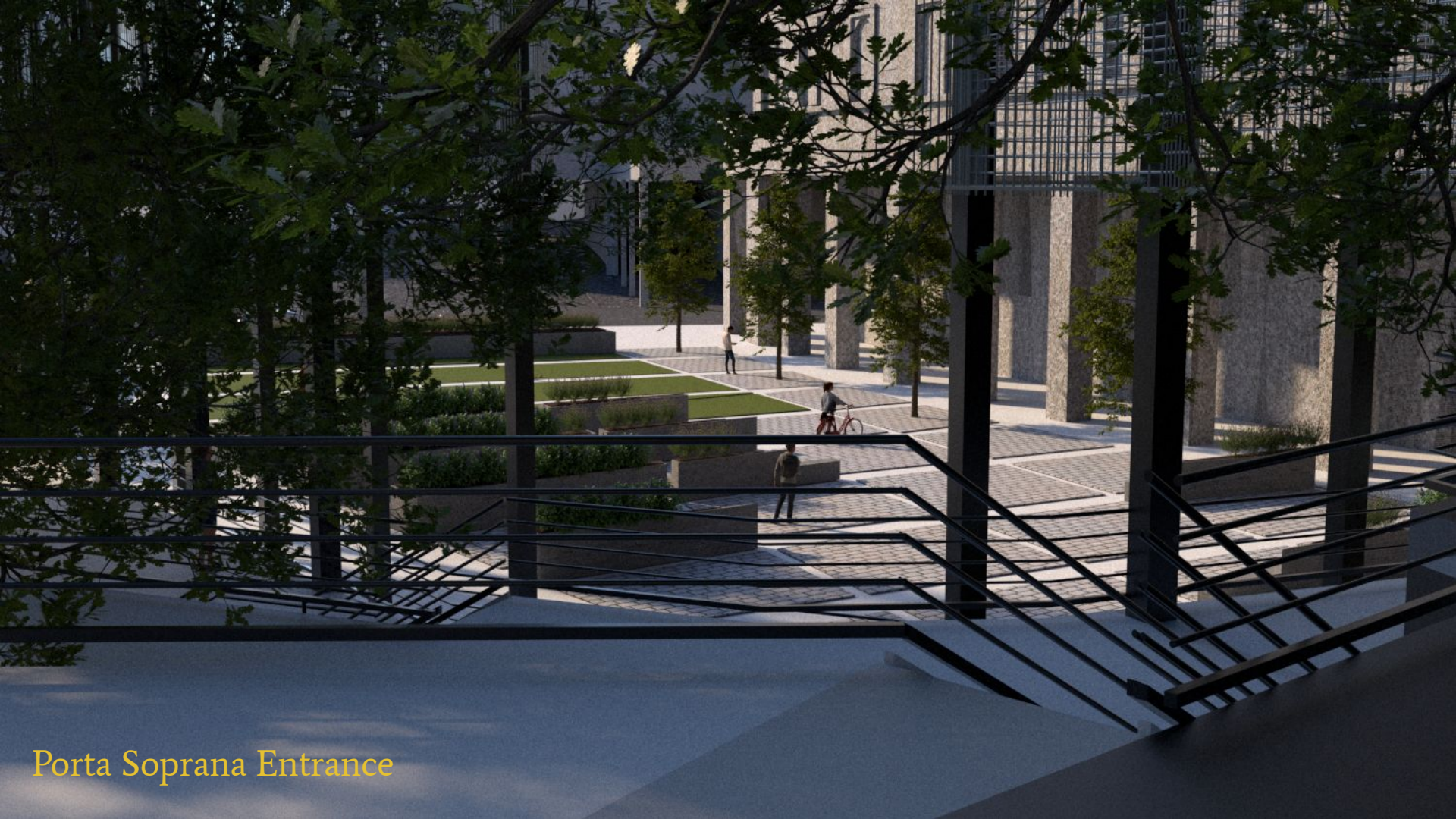
Gym

Typical Bedroom



Porta Soprana





Porta Soprana Entrance

