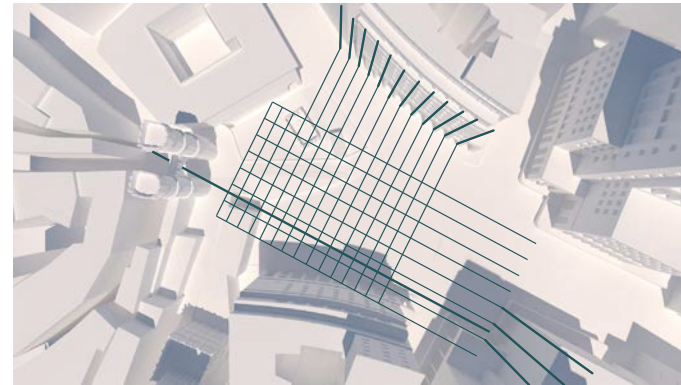
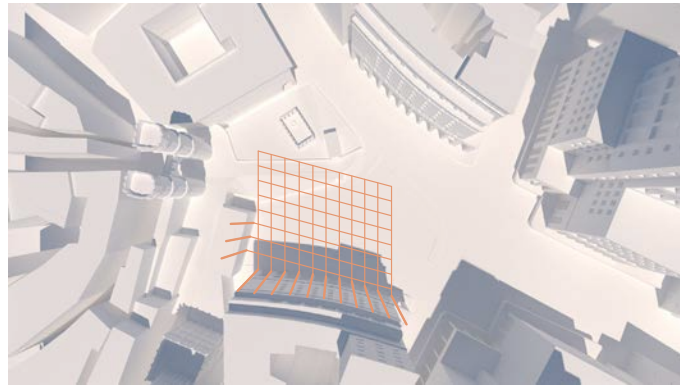


Competing Grids

By: Chelsea Gutierrez and Anyela de las Traviesas





Project Statement

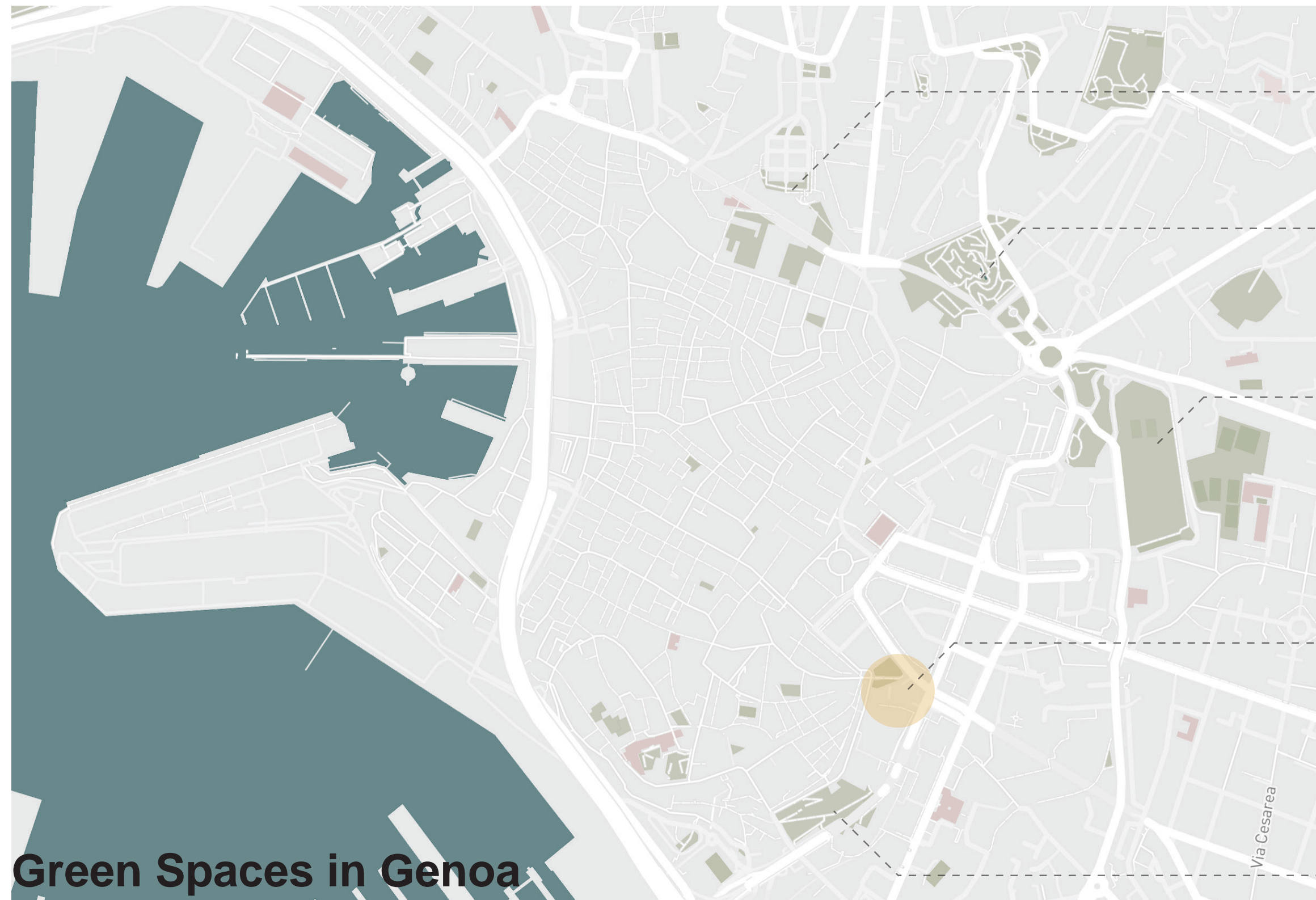
The massing and circulation for the project is taken from the rhythms that the surrounding buildings establish. The columns from the arcades are taken as starting points that create a grid of intersecting lines, which happens twice, creating two similar but distinct grids. This allows for the creation of two formal languages, one light and open, and another one more solid and private, which is ideal for the two main programs the project seeks to propose: retail areas for the public and a hotel, which interact with each other.

Looking at Genoa's urban layout, we noticed a lack of green public spaces, so we took it as a goal to introduce a new green area on the perimeter of the historic center. We are therefore taking from Genoa's industrial character to create a structure that acts as a vertical park, activating its walls as areas for vegetation to grow, and turning this into the focal point of our project.





Genoa, Italy



Green Spaces in Genoa



Belvedere Castelletto



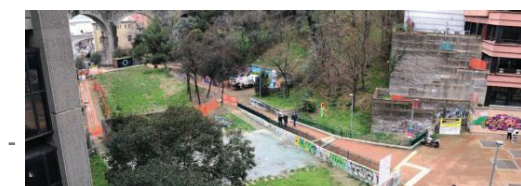
Villetta di Negro



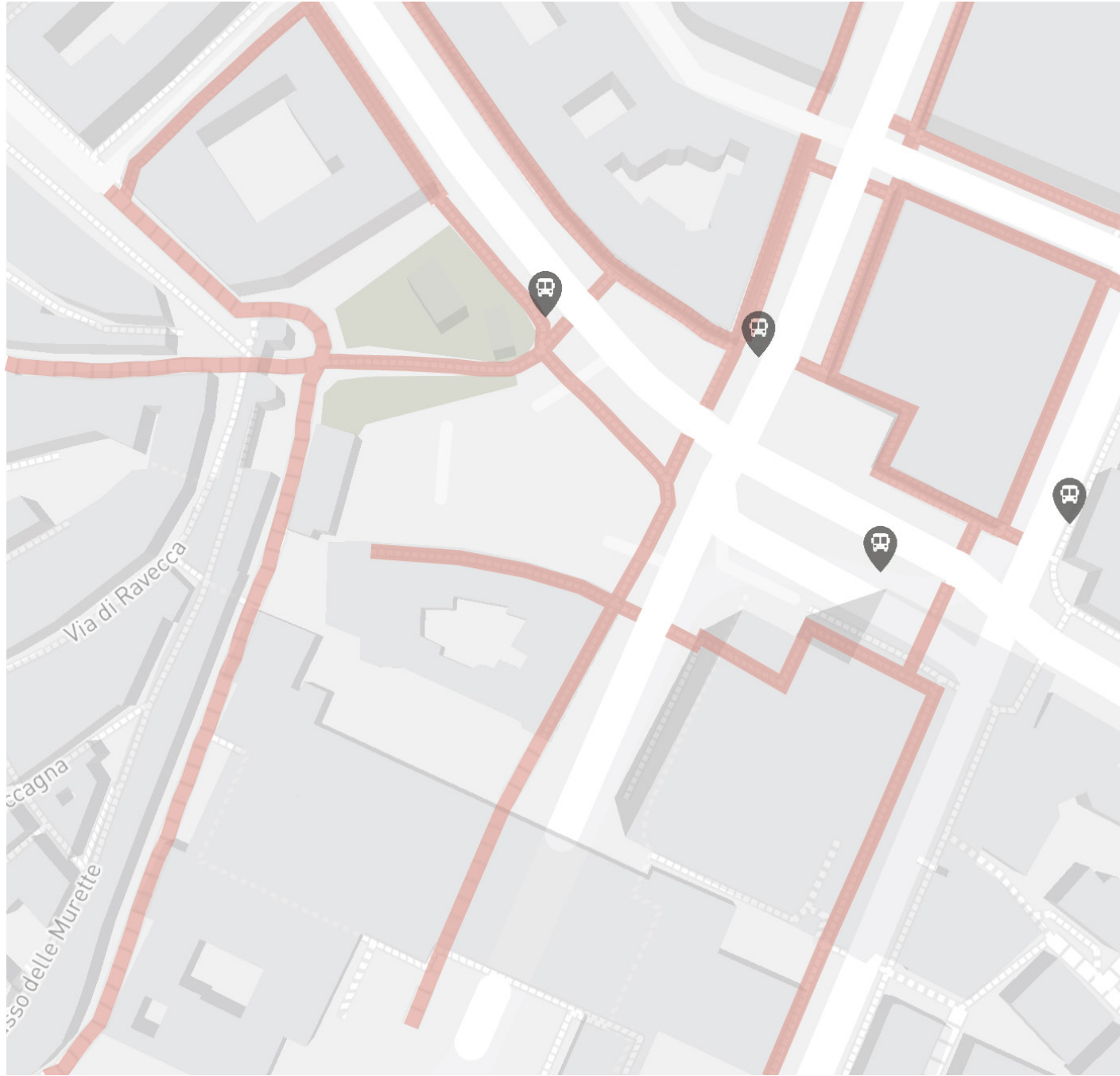
Spianata dell'Acquasola



Piazza Dante

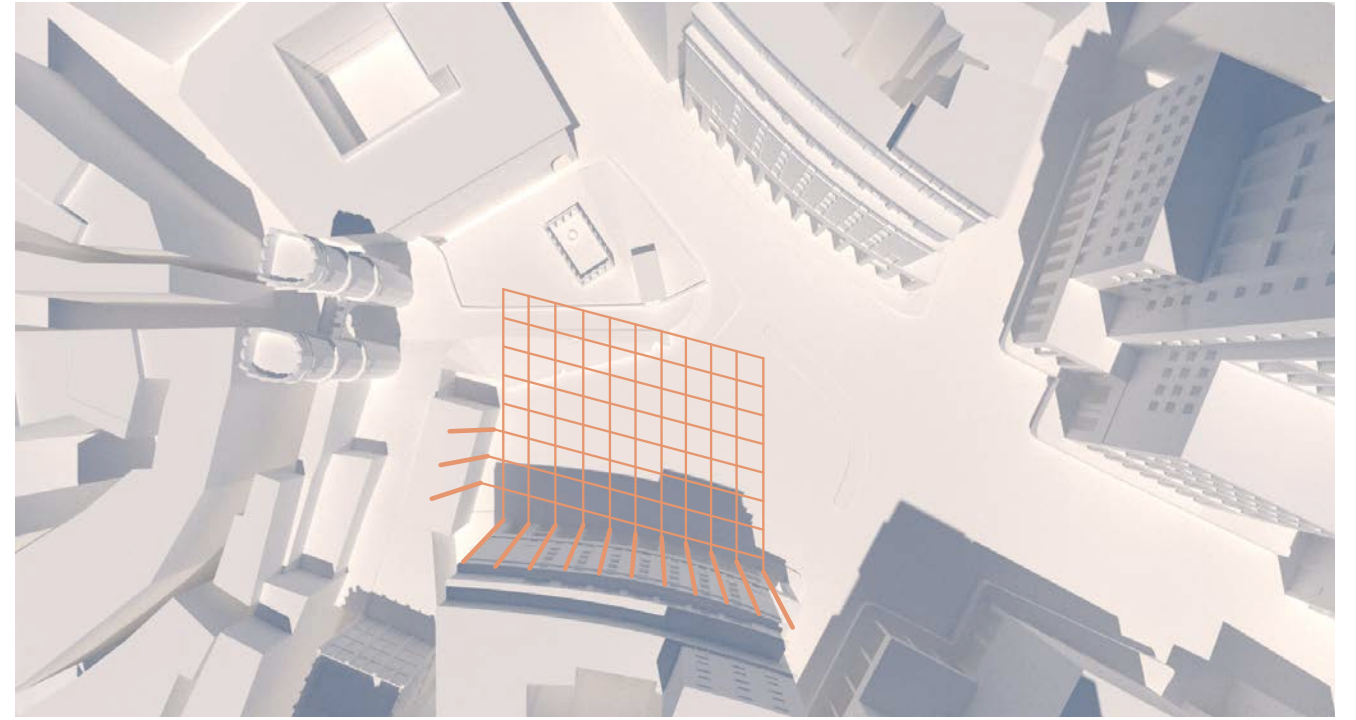


Piazza Carignano

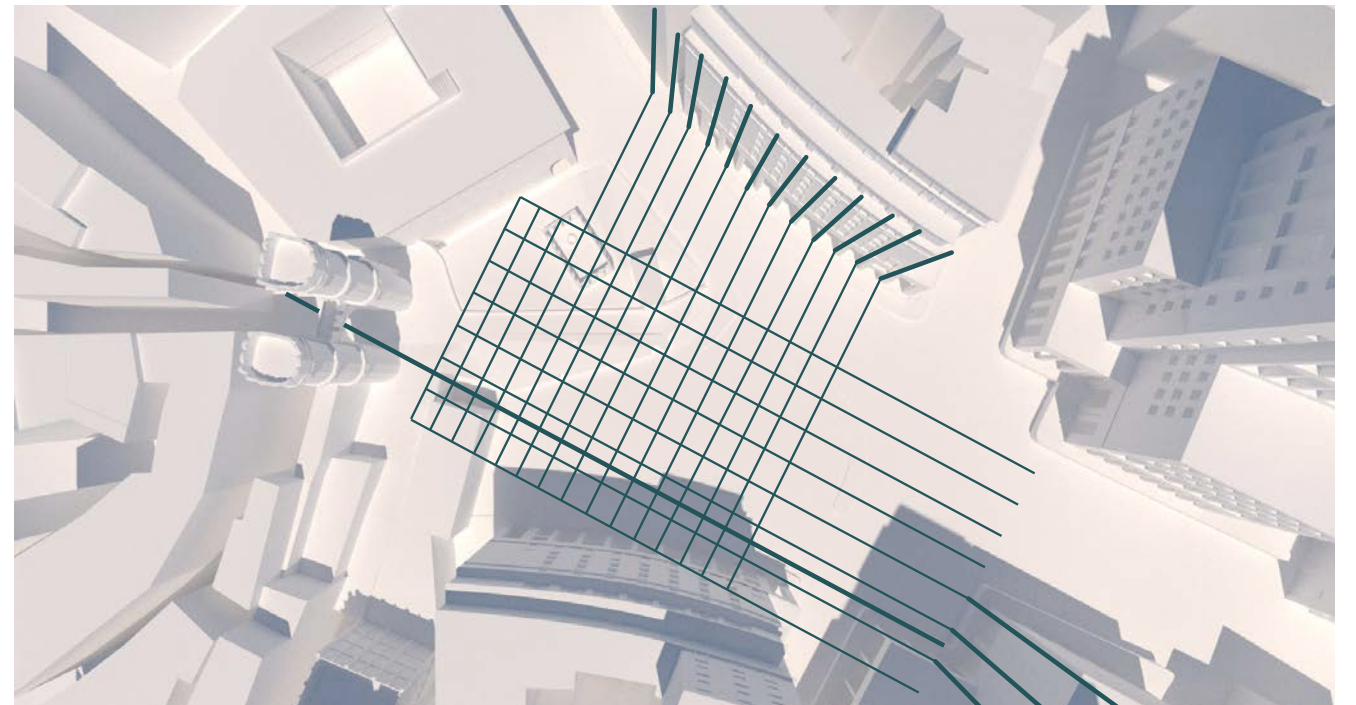


Pedestrian Circulation

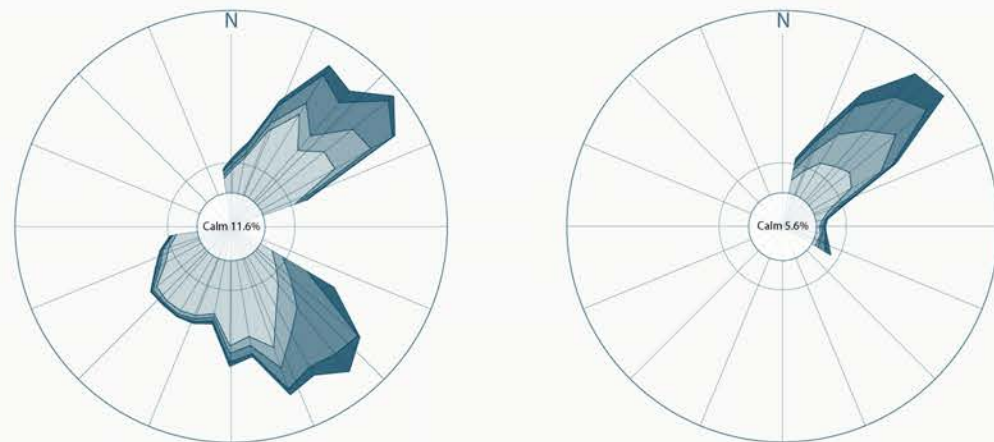
Site Analysis



Massing Grid



Circulation Grid



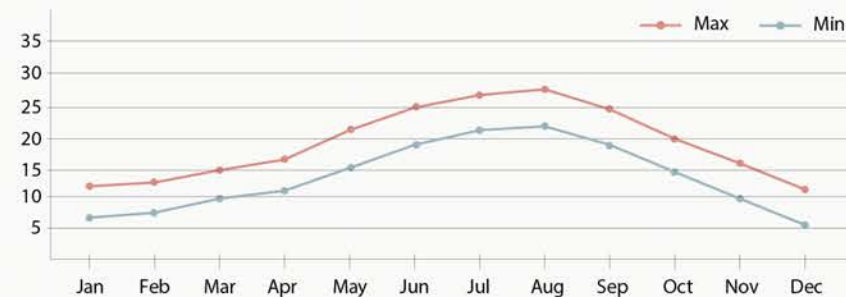
Summer Winds

Winter Winds

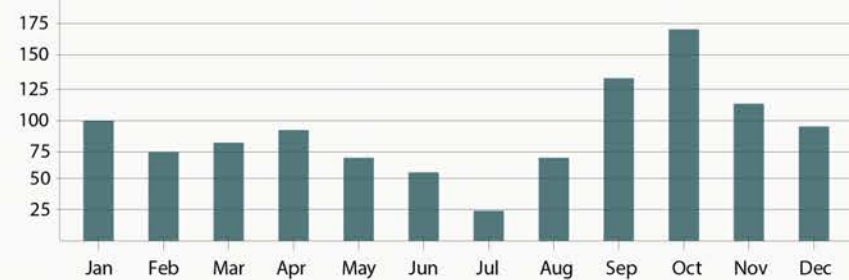
Wind Speeds (mph)



Average Monthly Temperatures (Celsius)

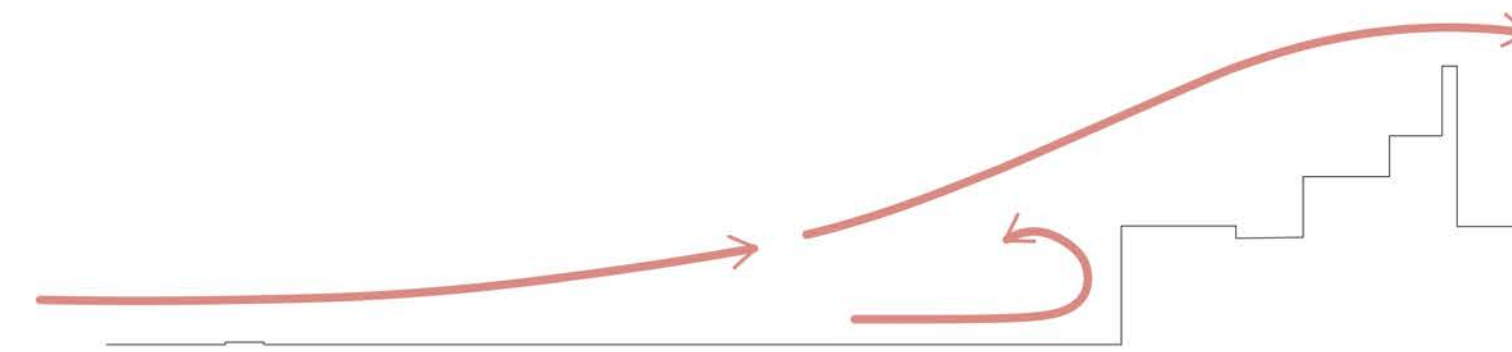


Average Monthly Precipitations (mm)

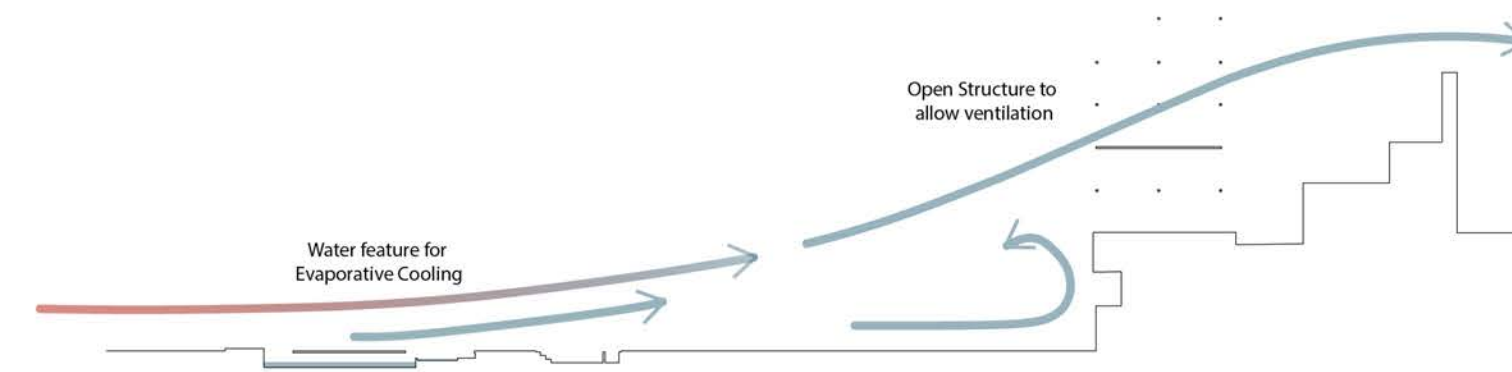


Wind Analysis

Based on Genoa's wind conditions, introducing a water feature on the east limit of the piazza will be beneficial in the summers as it can cool down the air entering the area. In winter times, it won't be necessary so the water can be drained out and the fountain can become a seating area.



Existing Conditions



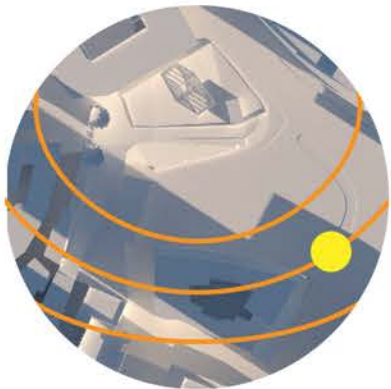
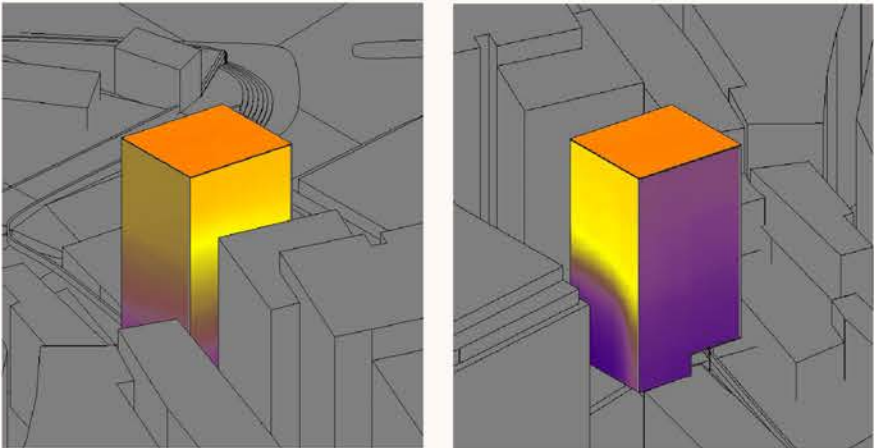
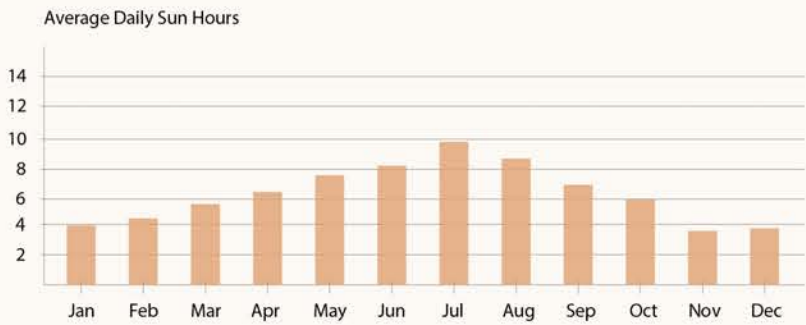
Proposed Conditions



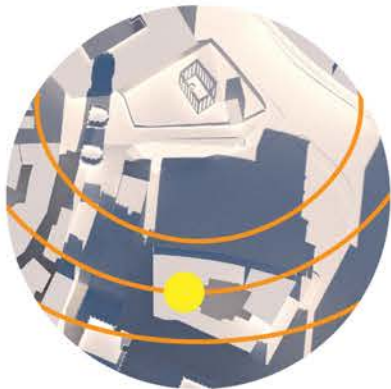
Wind Response

Sun Analysis

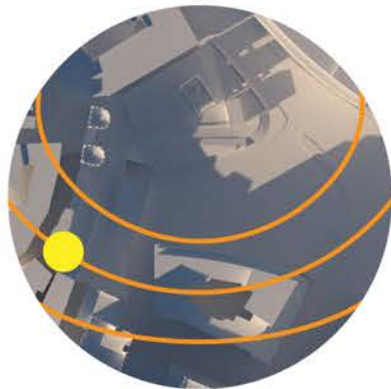
After analyzing the solar conditions, we can see that the summer-time experiences significantly higher temperatures and sun exposure, while in winter months the surrounding buildings cast predominant shadows over the area.



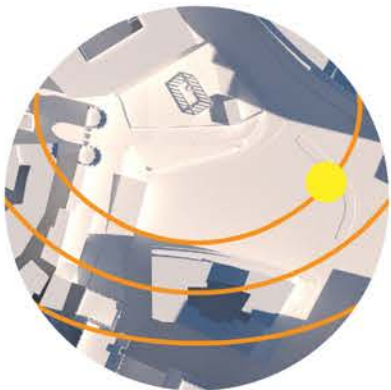
March 20, 9:00



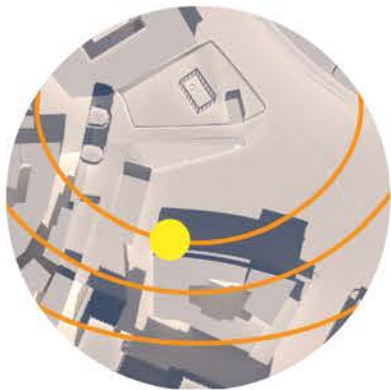
March 20, 12:00



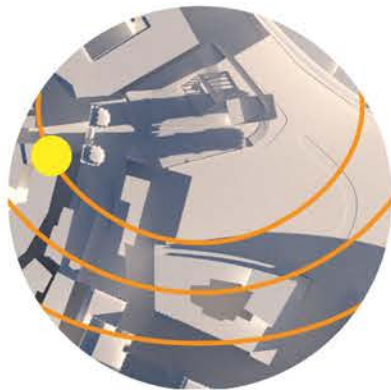
March 20, 16:00



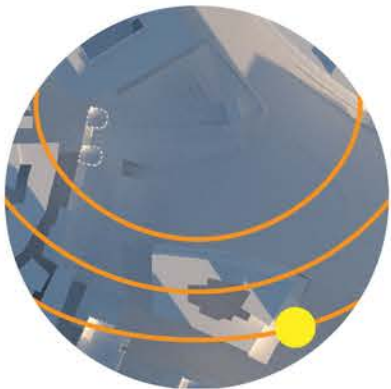
July 31, 9:00



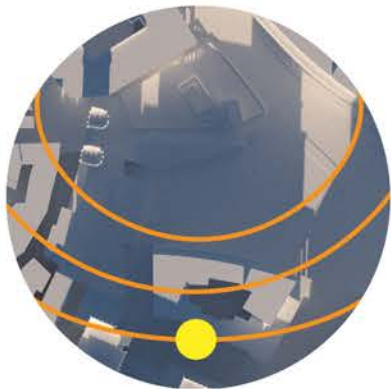
July 31, 12:00



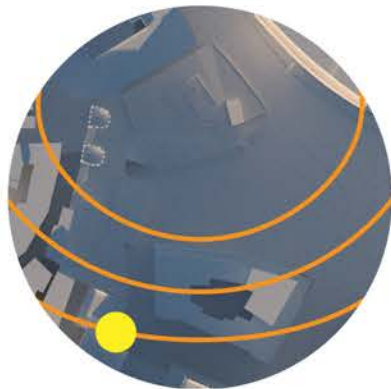
July 31, 17:00



December 31, 9:00

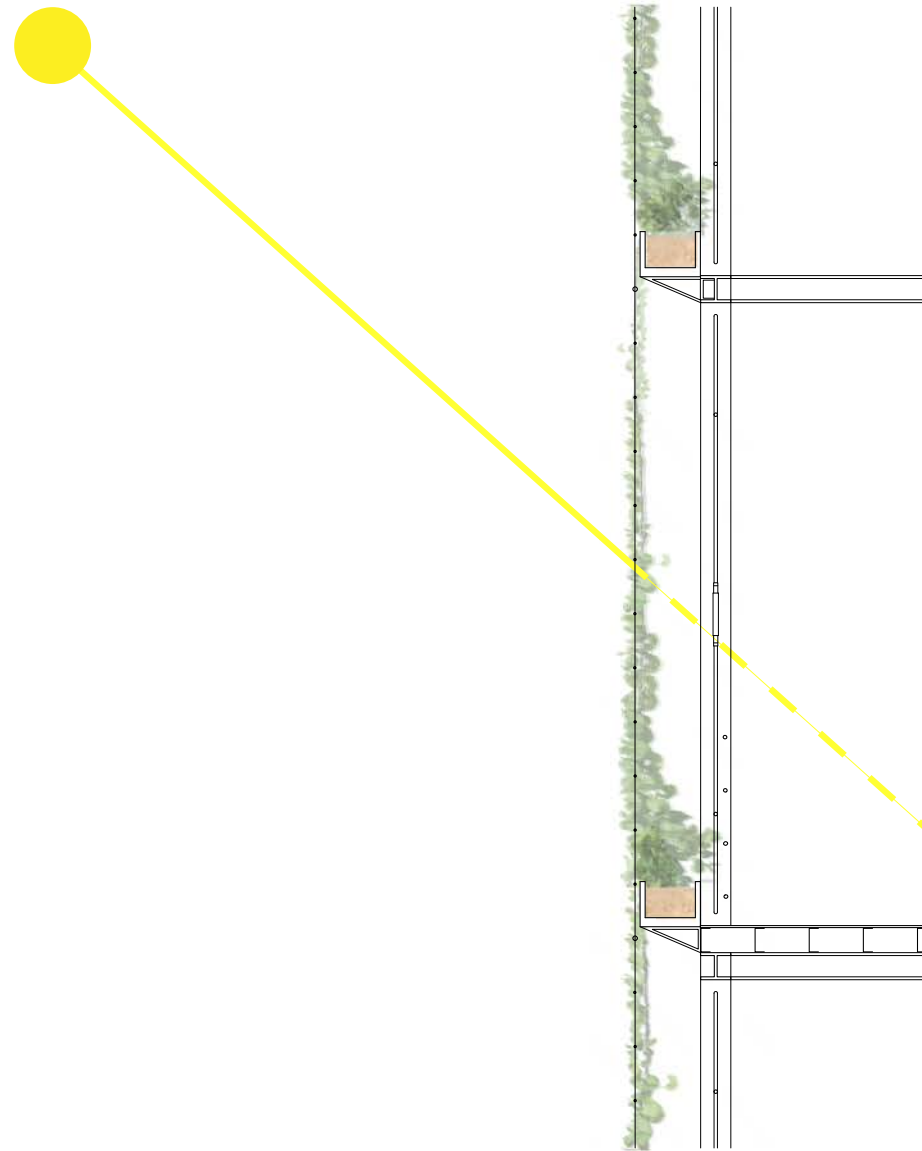


December 31, 12:00

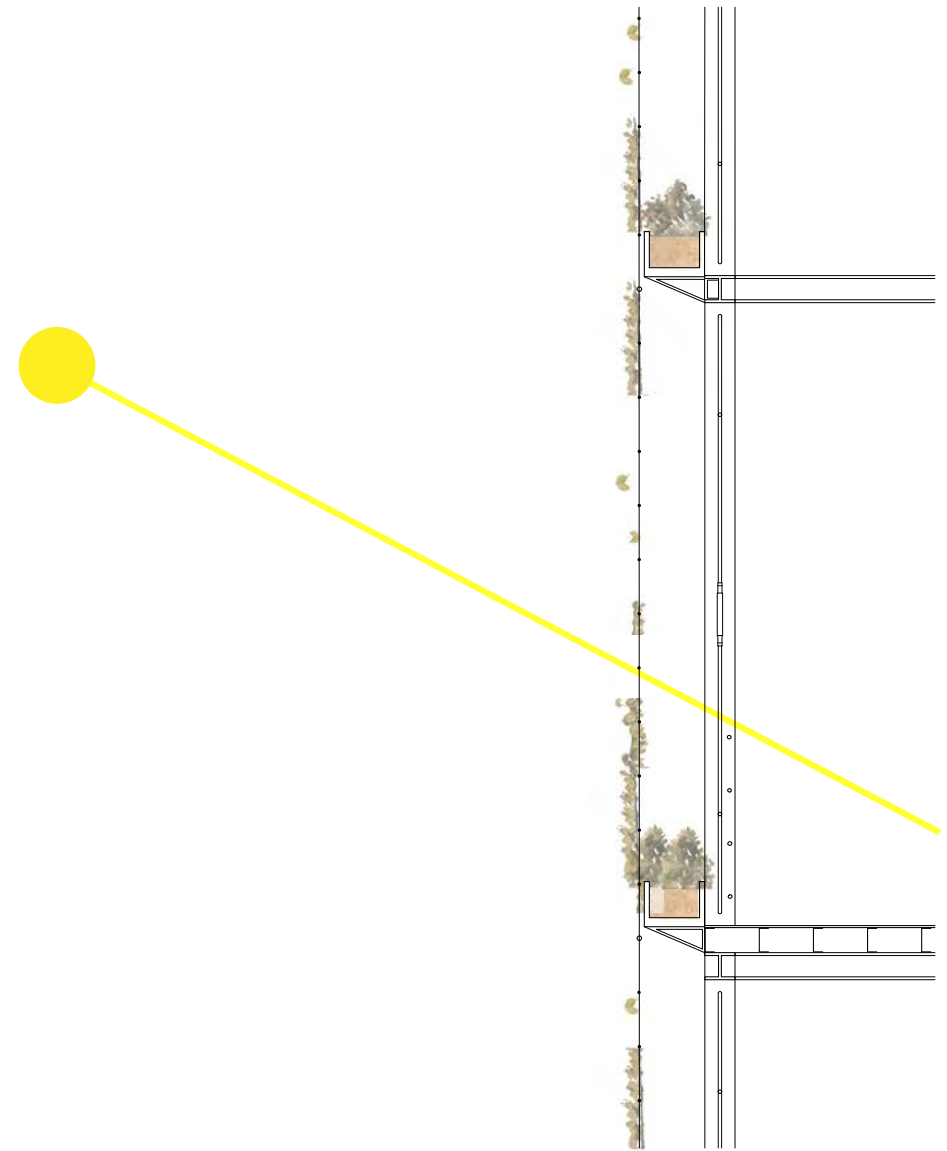


December 31, 15:00

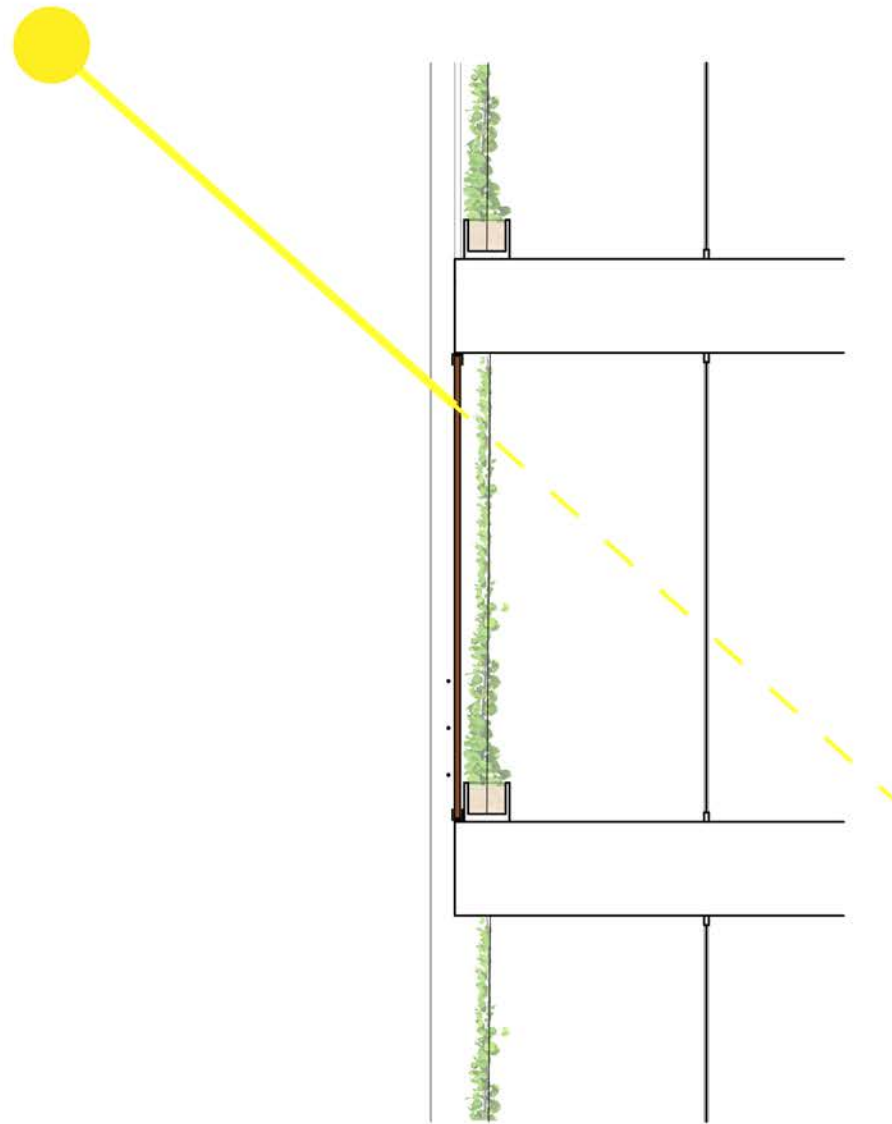
Summer Sun



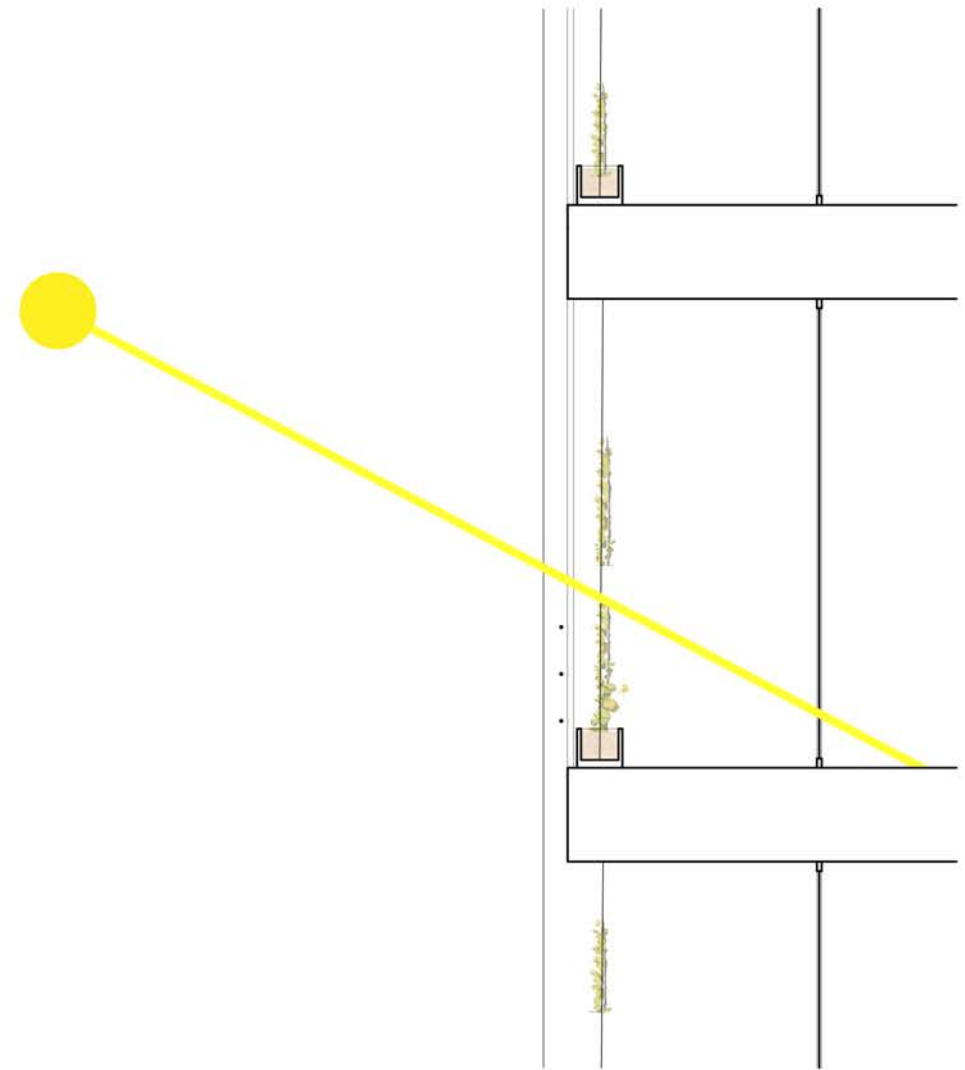
Winter Sun



Summer Sun



Winter Sun



Manually moveable wooden panels

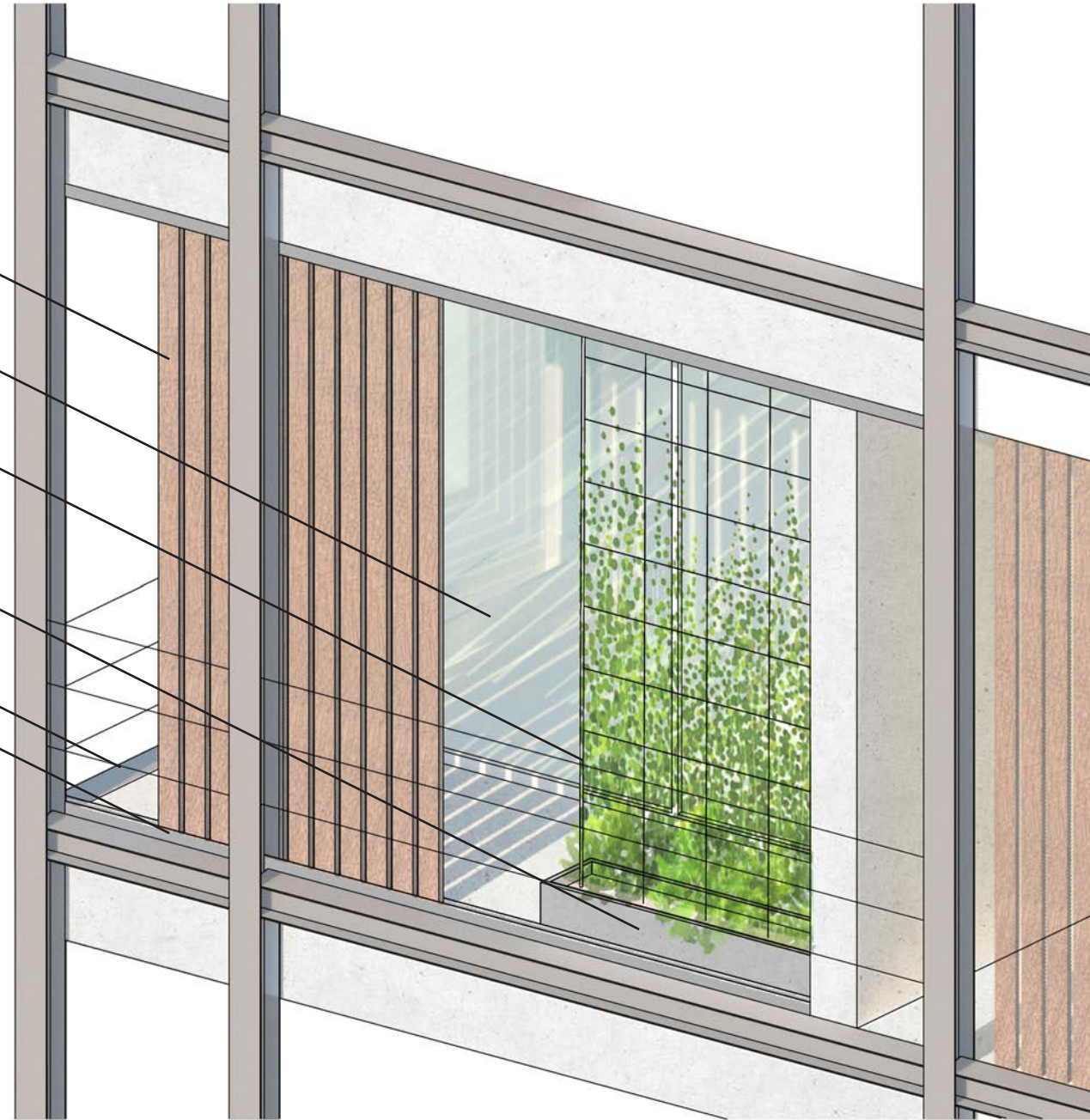
Glass

Wire mesh for greenery

Planter

Wire Railing

Sliding support for panels



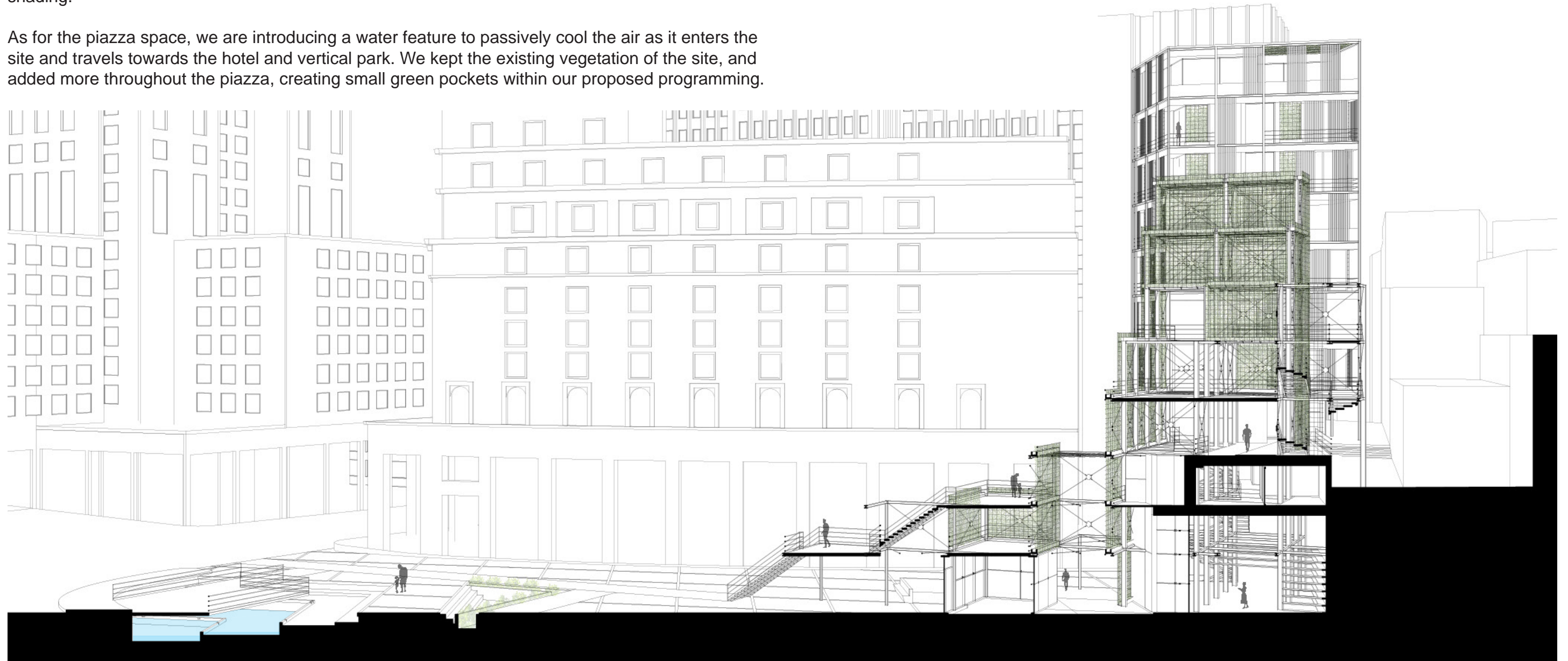
Balcony Detail



Environmental Statement

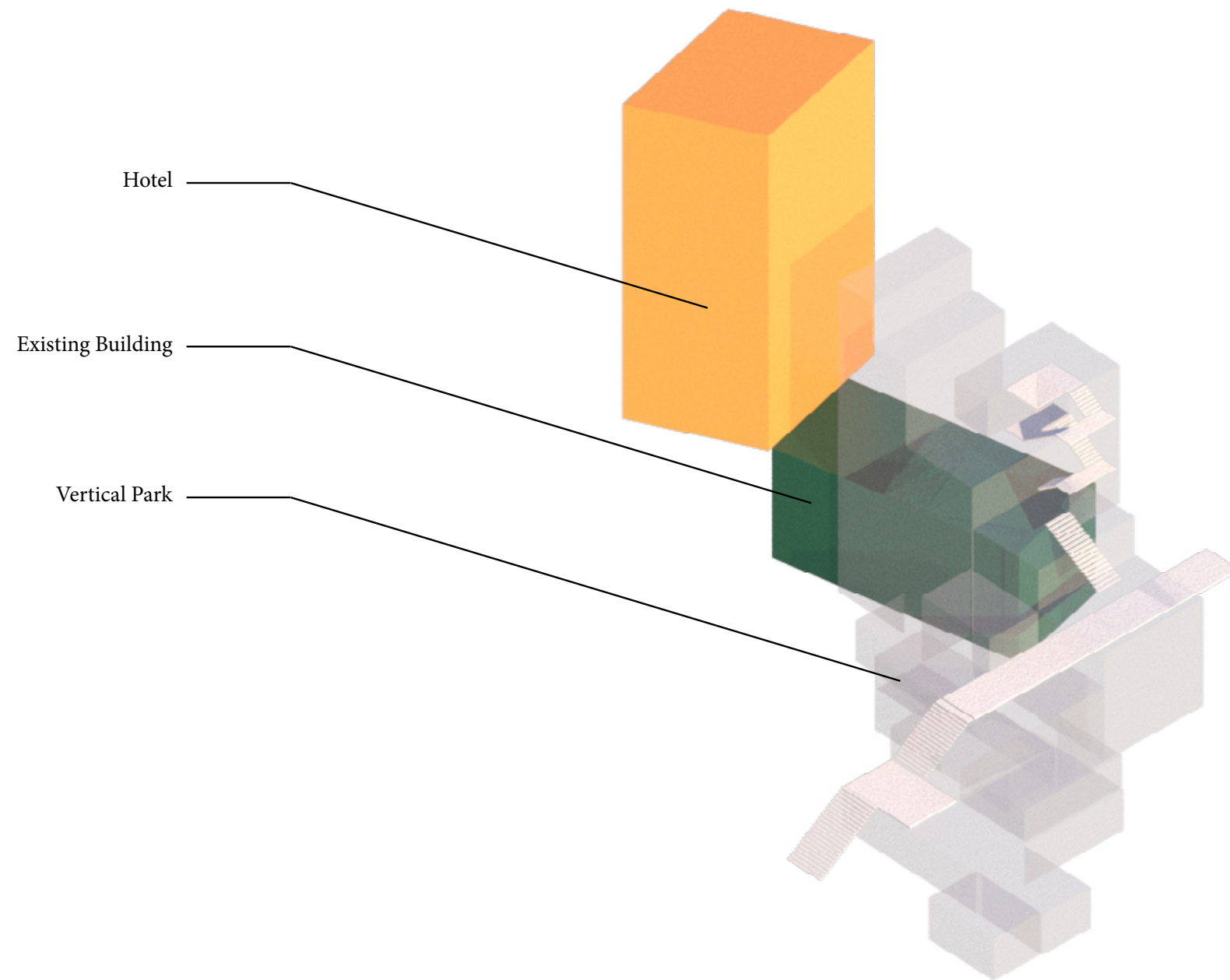
Analyzing the site conditions of Piazza Dante, we saw a deficiency in sunlight hitting the area. We decided on a passive design strategy that maximizes the direct sunlight in the winter and limits it in the summer: green screens. These are distributed throughout the park structure, which creates a cool microclimate in the hottest times of the year. They are present, at a smaller scale, on each of the hotel room's balconies, which also use moveable wooden panels that offer privacy and further shading.

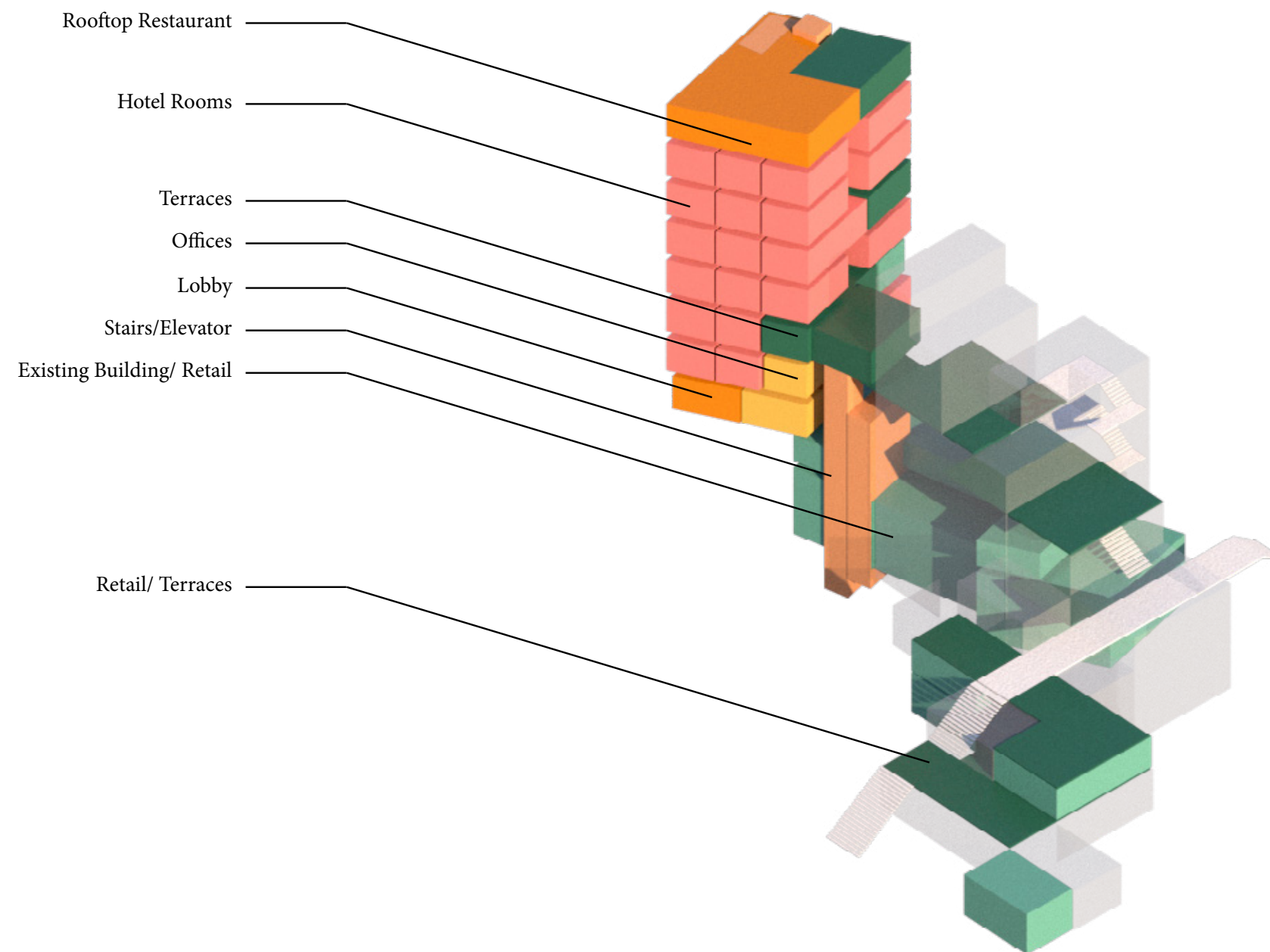
As for the piazza space, we are introducing a water feature to passively cool the air as it enters the site and travels towards the hotel and vertical park. We kept the existing vegetation of the site, and added more throughout the piazza, creating small green pockets within our proposed programming.

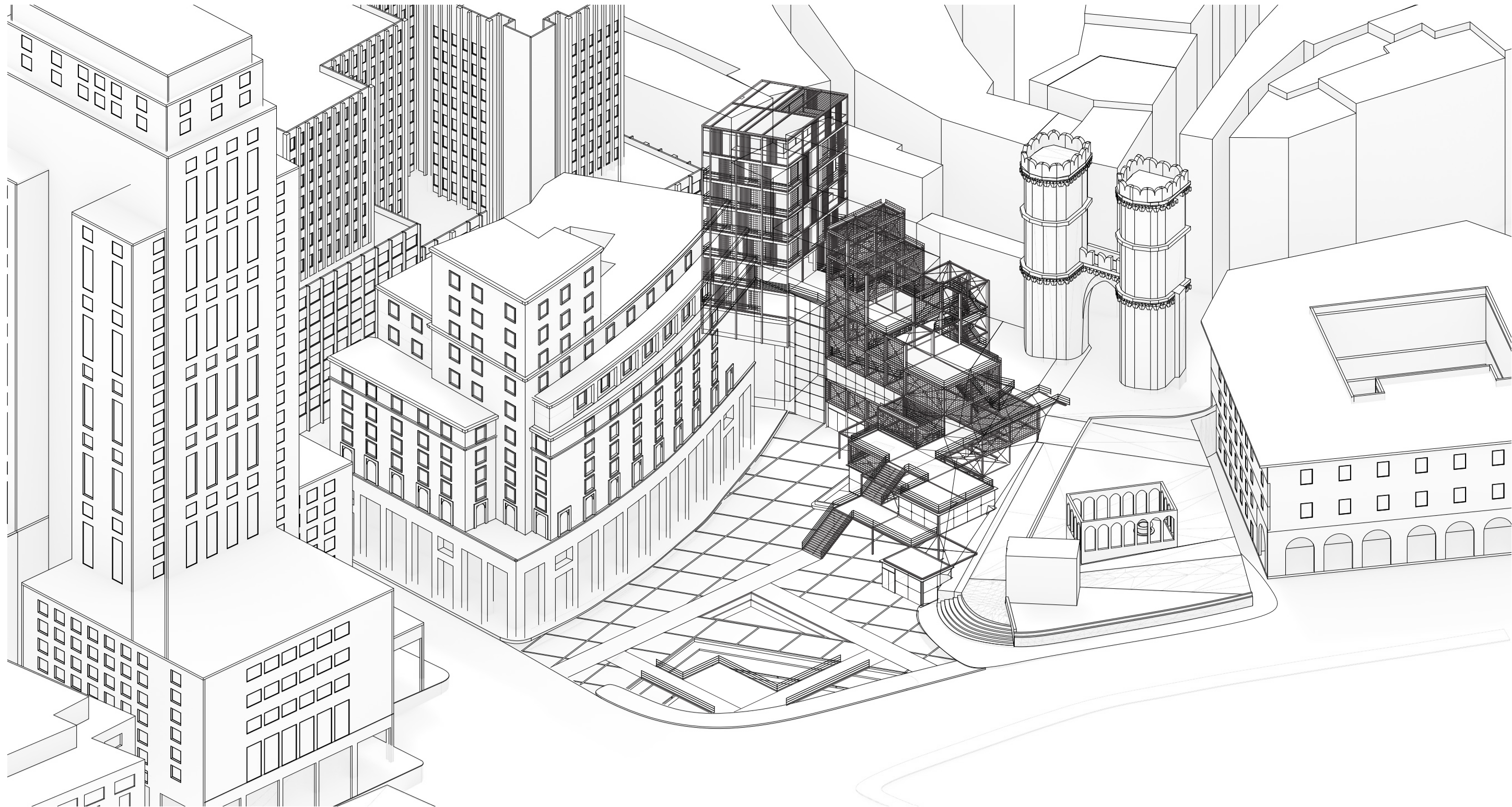


This project seeks to introduce a new and unique green space in the city of Genoa, which comes with environmental and social benefits. The piazza finalizes in an attractive focal point by offering a vertical structure that includes commercial programs that integrate with the hotel next to it.









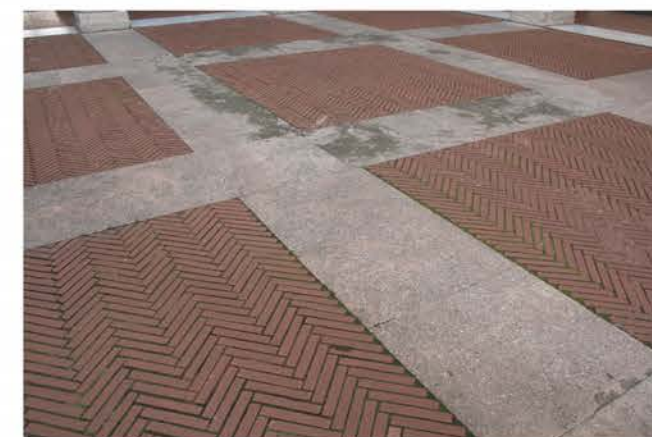
Industrial Structures



Green Terraces



Ground Treatment

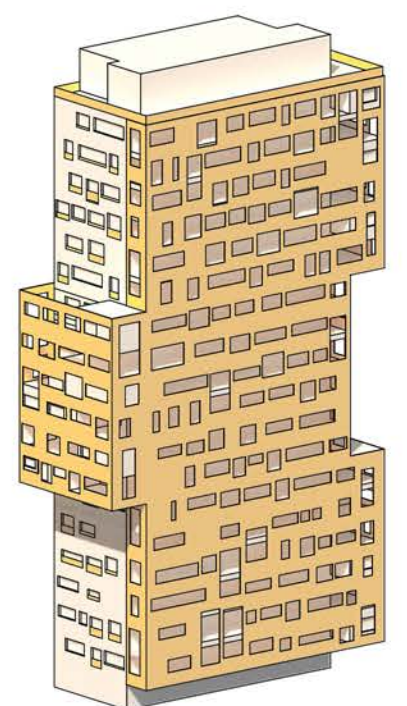
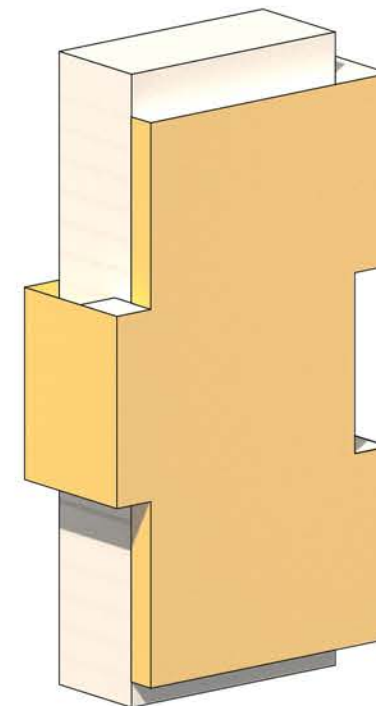
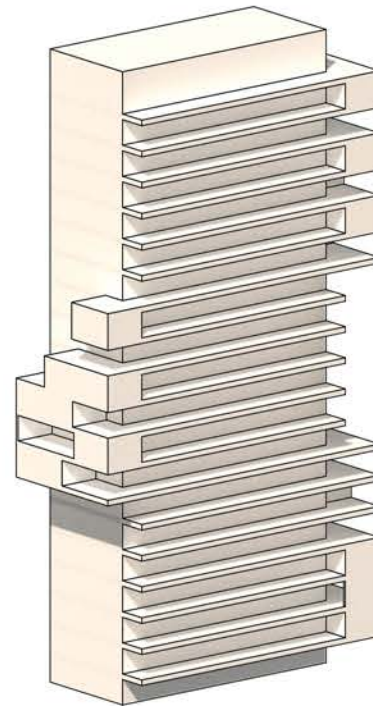
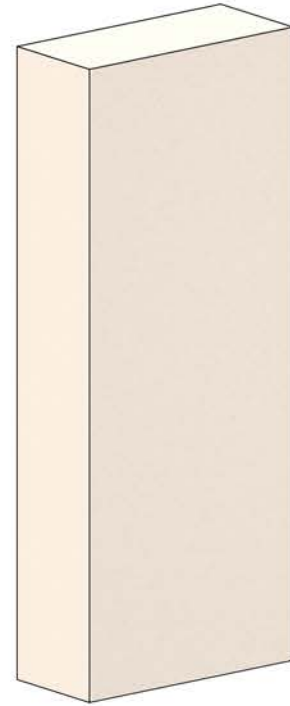


Aurora City Life

Milan, Italy

This project served as an example of architecture using two contrasting languages. Aurora City Life is characterized by solid, regular forms wrapped in a mesh-like element that is much lighter and irregular.

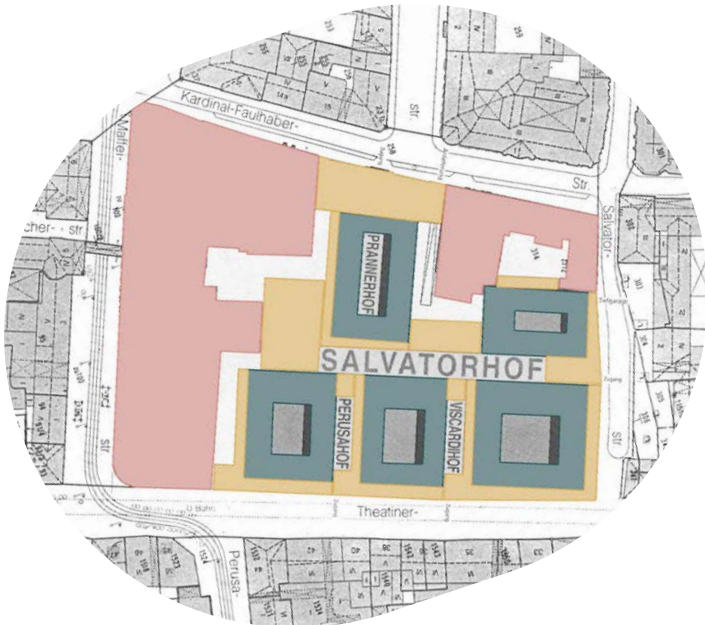
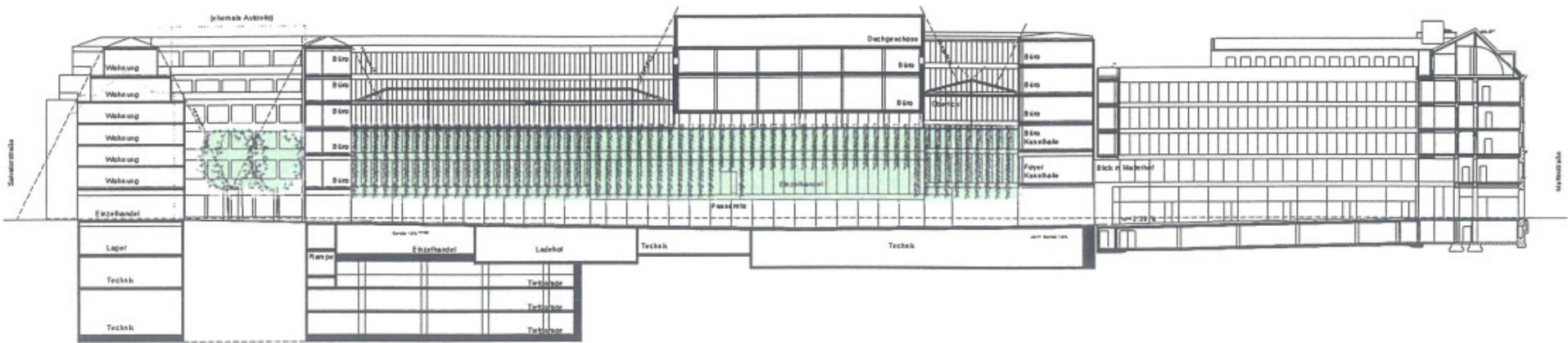
The use of gold-colored grid elements which stand out against the white concrete of the entire building are the most attractive part of this project. These elements are evenly distributed on the facades. Partly detaching itself from these by creating new volumes towards the outside, partly serving as a parapet for the tall windows seemingly randomly placed on all the facades.



Funf Hofe - Five Courtyards

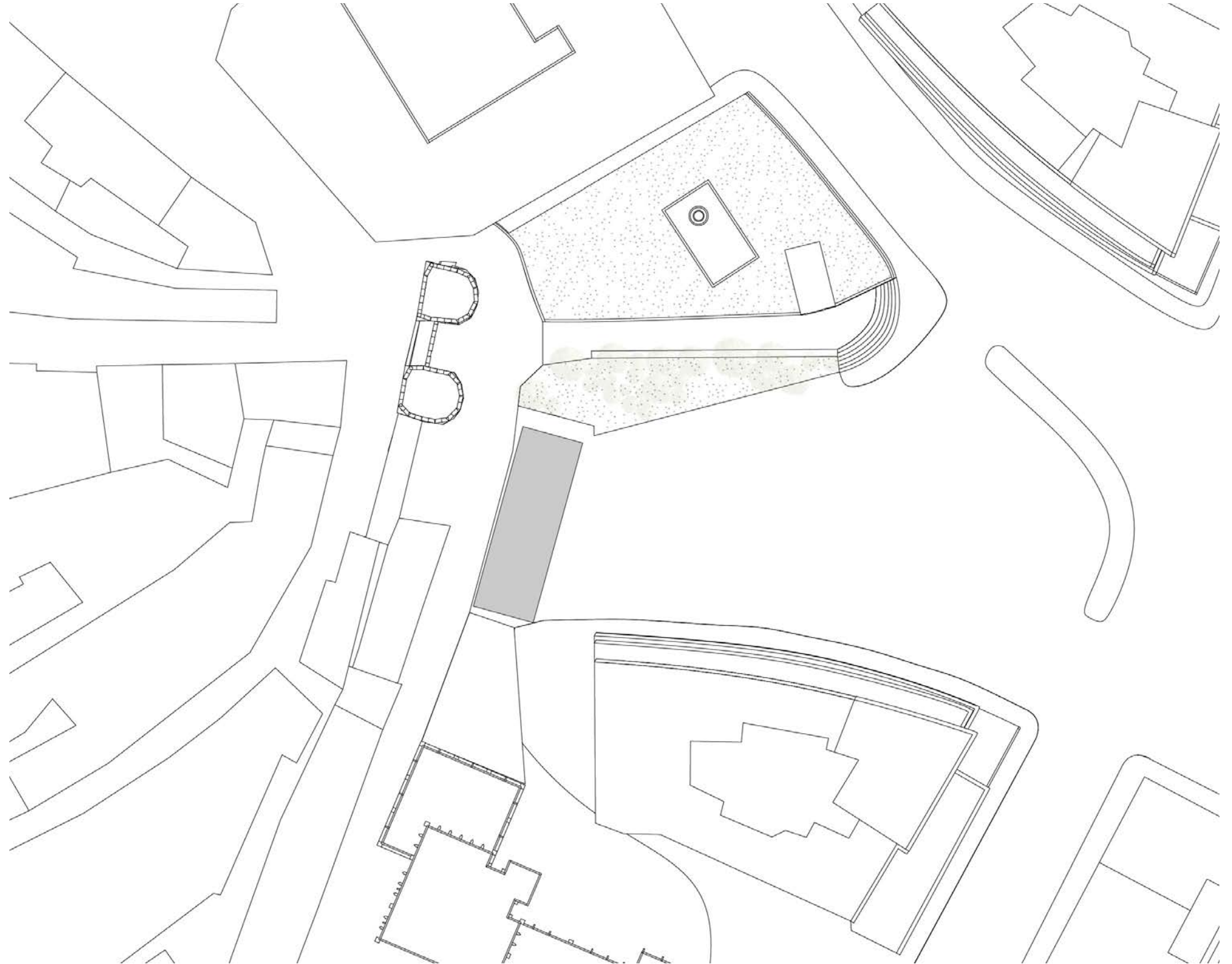
Munich, Germany

The project started in 1997 and most of the buildings facing the street were kept along with their facades. Therefore the project developed around these limitations allowing for masses to be placed as filler within the space. Furthermore they cutout courtyards within the blocks to commemorate historical old residences. This allowed for unique courtyards to be developed within the project.

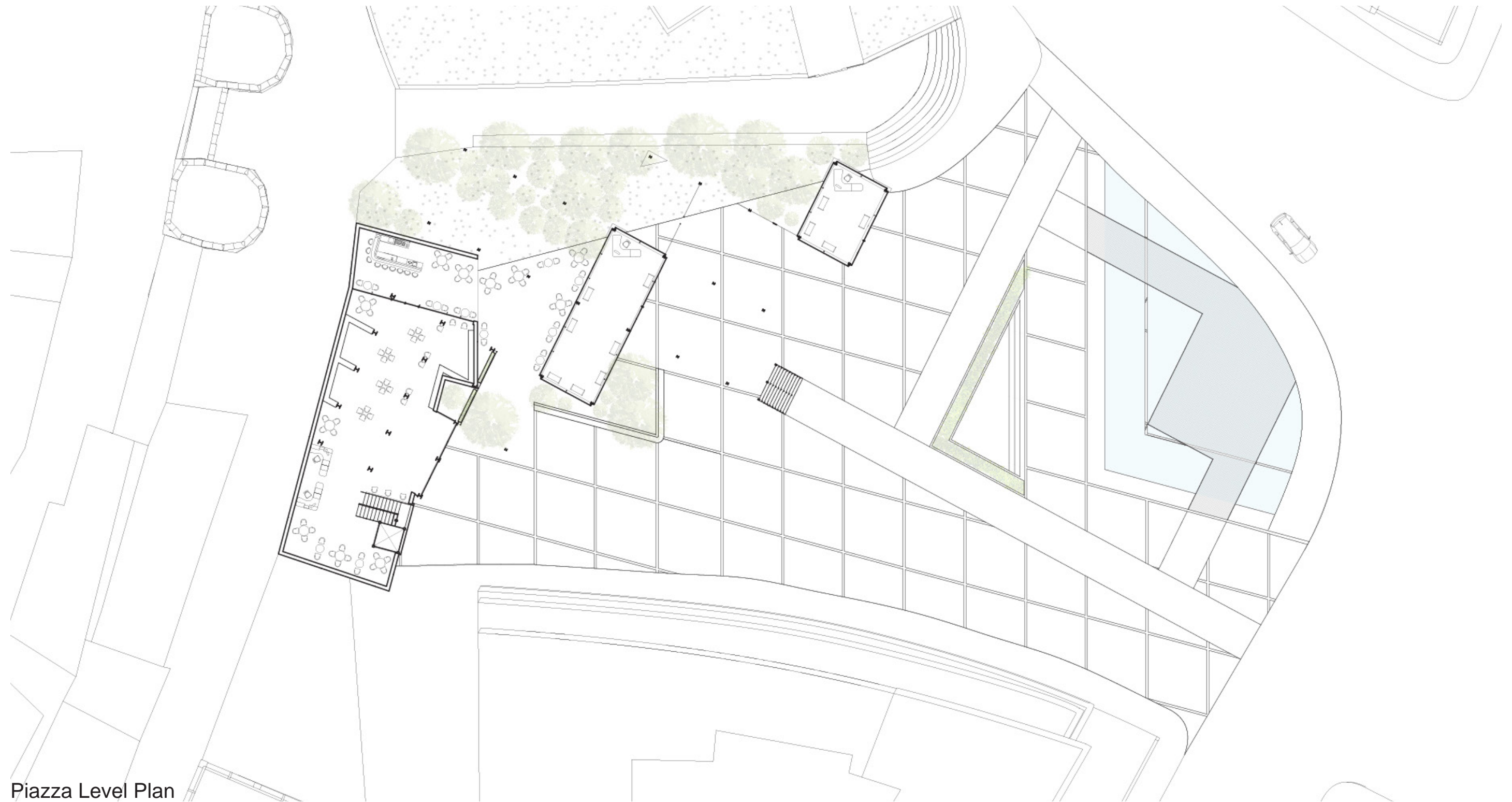


- Excluded Buildings
- Kept Buildings/Facades
- New Masses
- Circulation





Site Plan



Piazza Level Plan



Mezzanie Level Plan



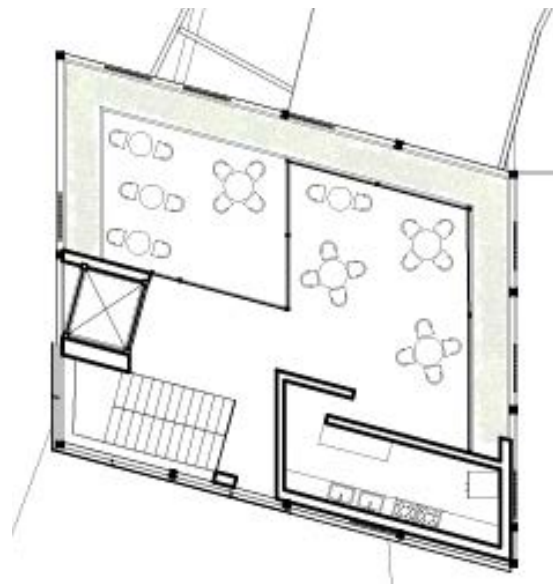
Upper Level Entrance Plan



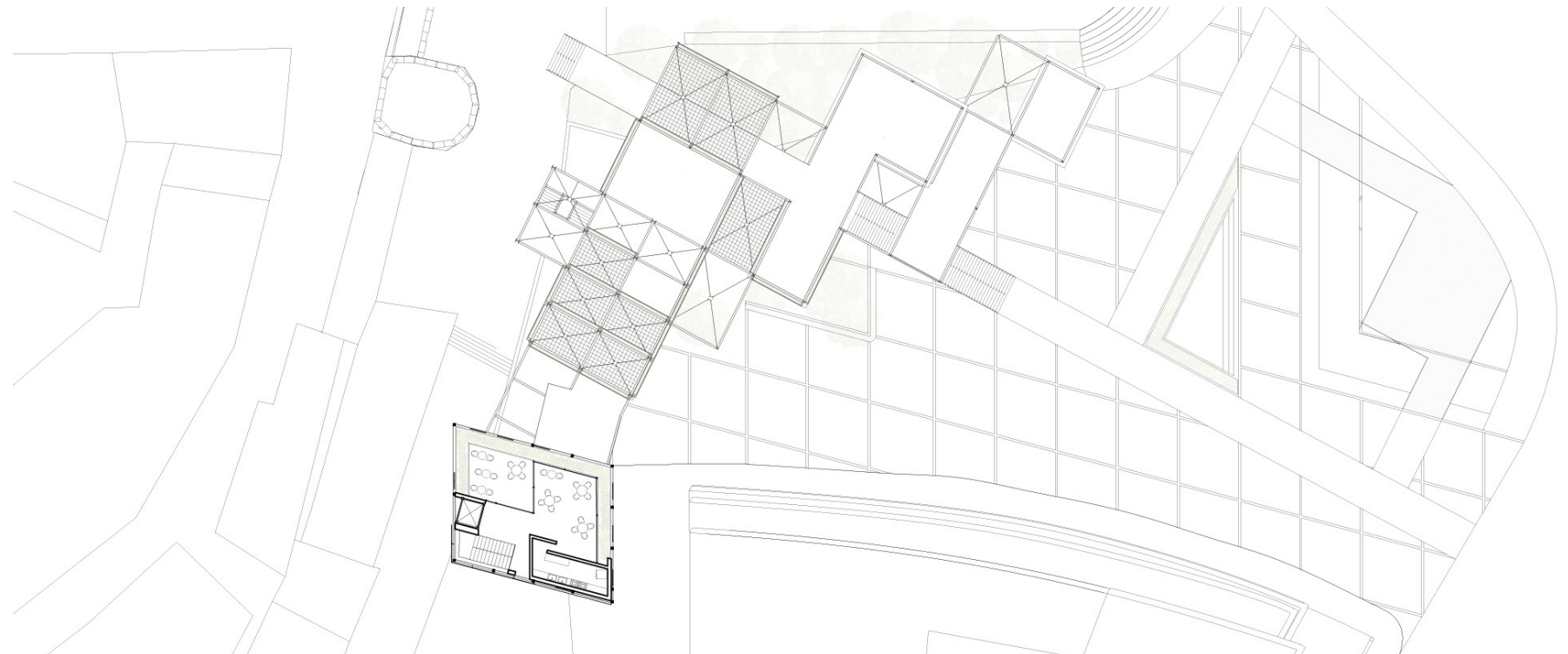
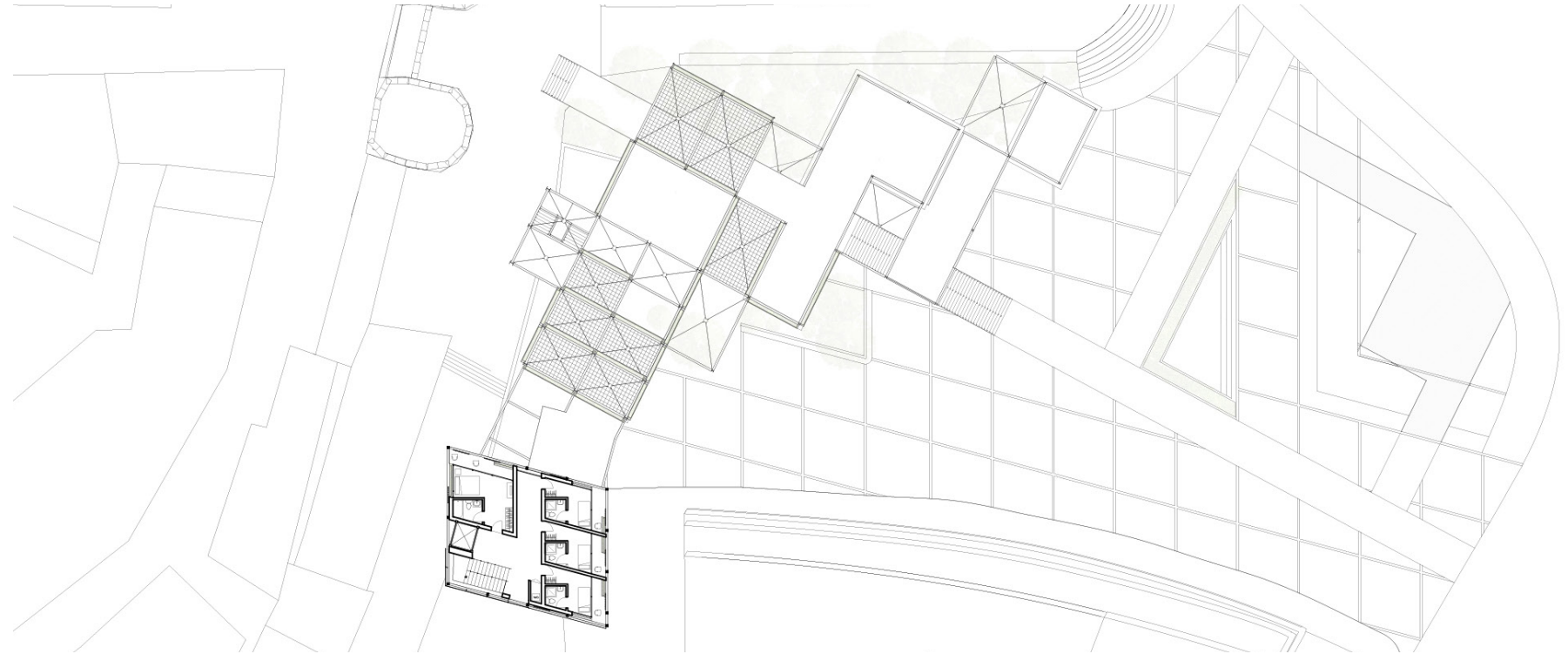
Hotel Second Floor Plan



Hotel Room Layout

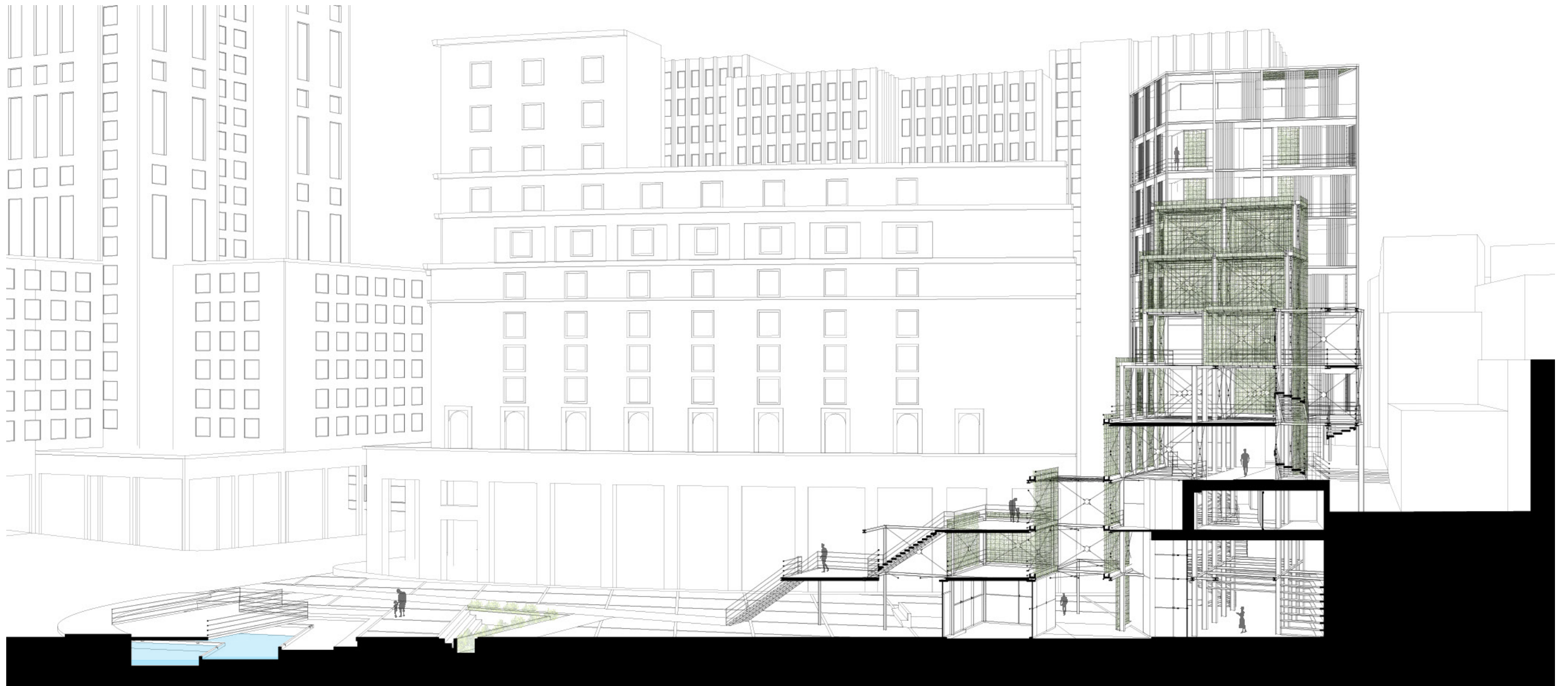


Rooftop Layout

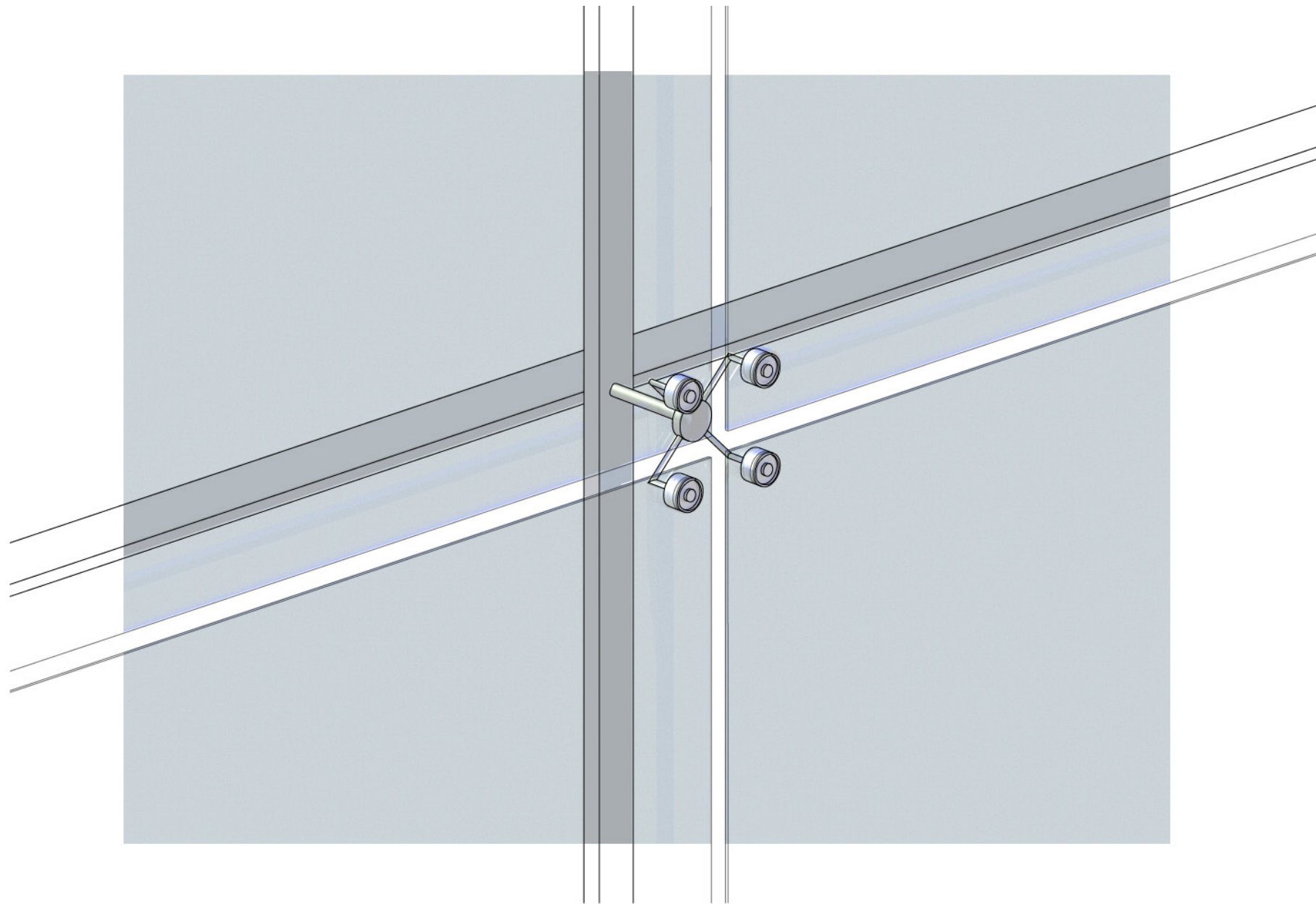




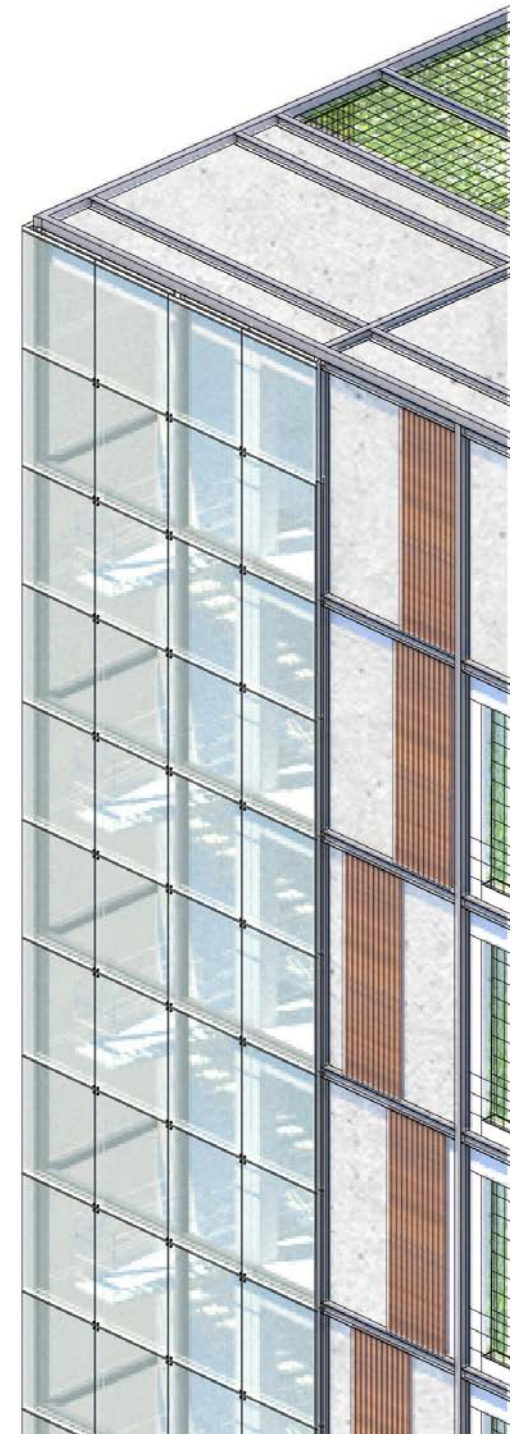
Cross Section

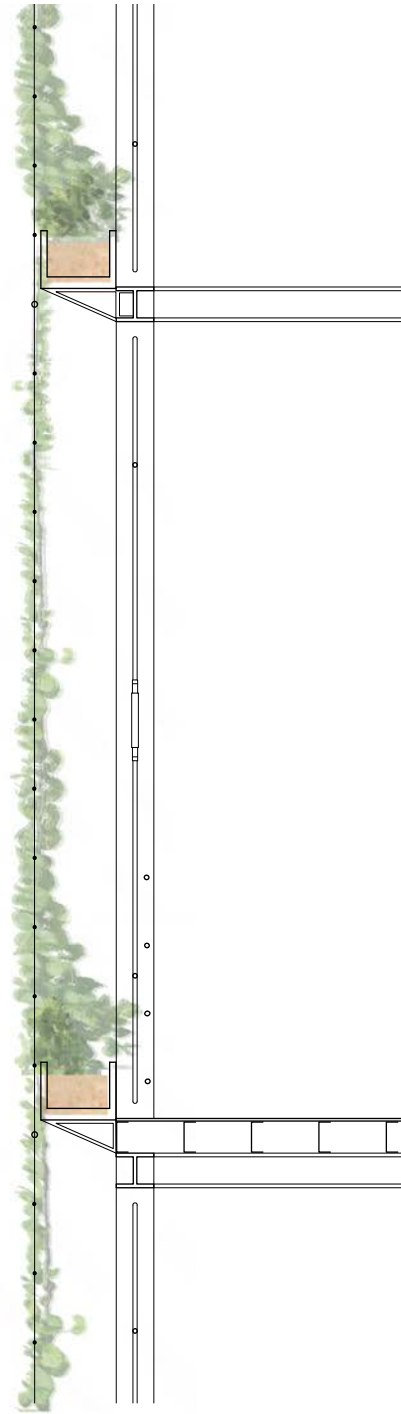


Longitudinal Section



Detail - Mullionless Glass





Detail - Vertical Park Green Walls



Upper Level Entrance



Dante Library



Hotel Lobby



Rooftop Terrace

