

shawpak

MEDICAL PACKAGING SOLUTIONS

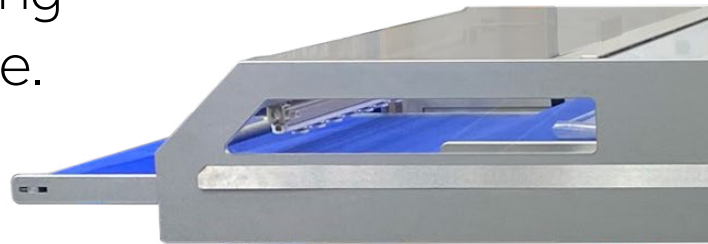


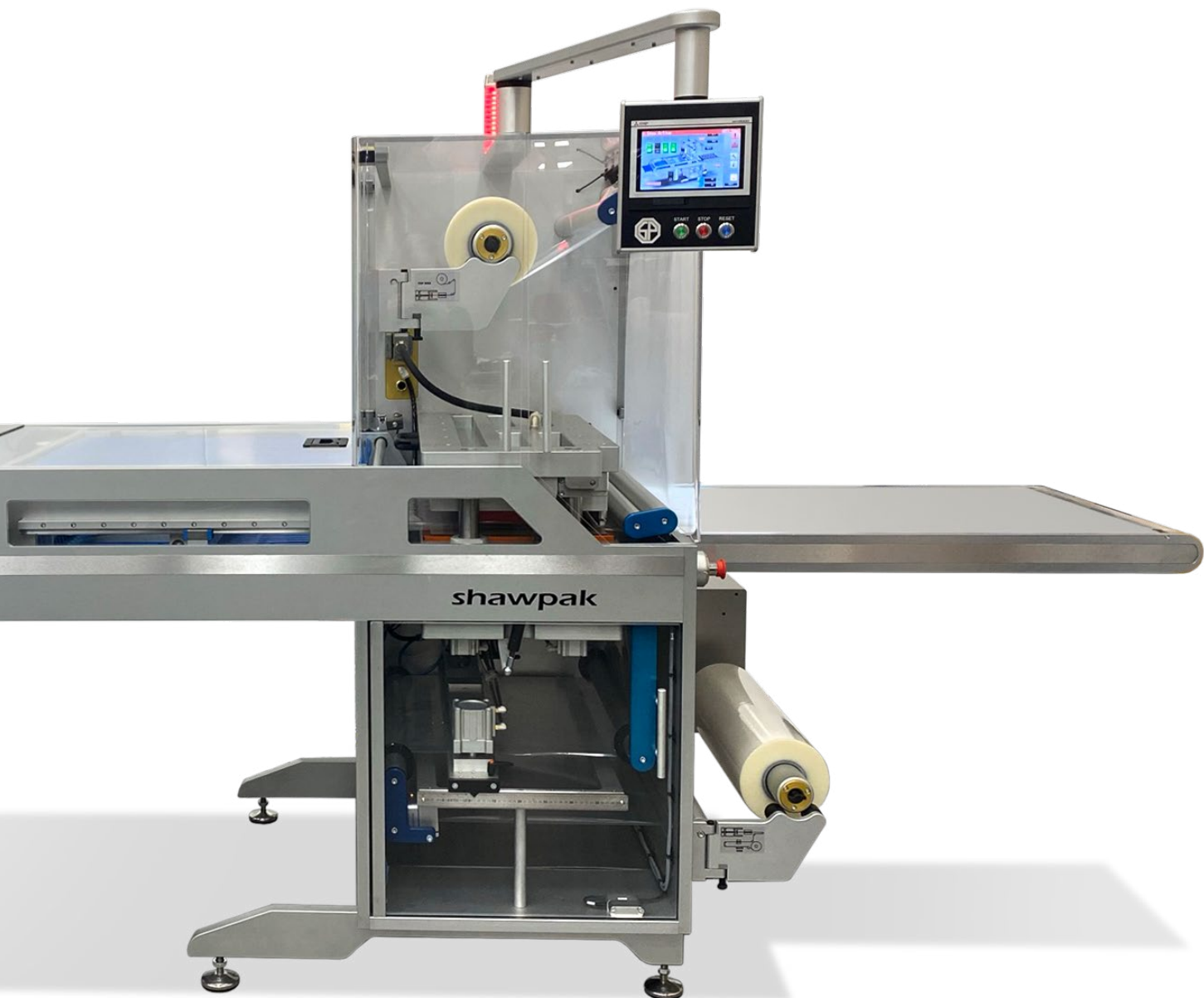
linear pouch machine



The **shawpak 4SS** is a revolutionary machine offering a solution to your packaging needs that is totally unique.

Built in the UK at our state-of-the-art engineering facility based in Derby, every care has been taken to ensure the machines are built to the highest quality.







The Shawpak 4SS-6030 is a highly flexible 4-side-seal machine capable of creating a flat pouch/sachet up to a maximum size of 300 x 600mm (or multiple lanes totalling up to 600mm in width).

It incorporates the latest technologies and innovative functionality to ensure high efficiencies and low maintenance. The machine's compact bespoke design gives a small footprint, saving valuable floor space, and utilises modular assemblies for quick changeovers and improved accessibility.



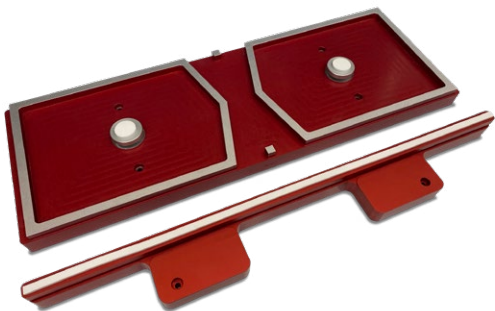




The Shawpak 4-Side Seal machine is compact but highly flexible. Along with the ability to produce any size pouch up to 600mm x 300mm, the machine can also offer the following options to produce even more varied packs:

- MATERIAL HOLE PUNCH
- ROBOT LOADING
- TOP MATERIAL PRINTING
- WEB TRACKING

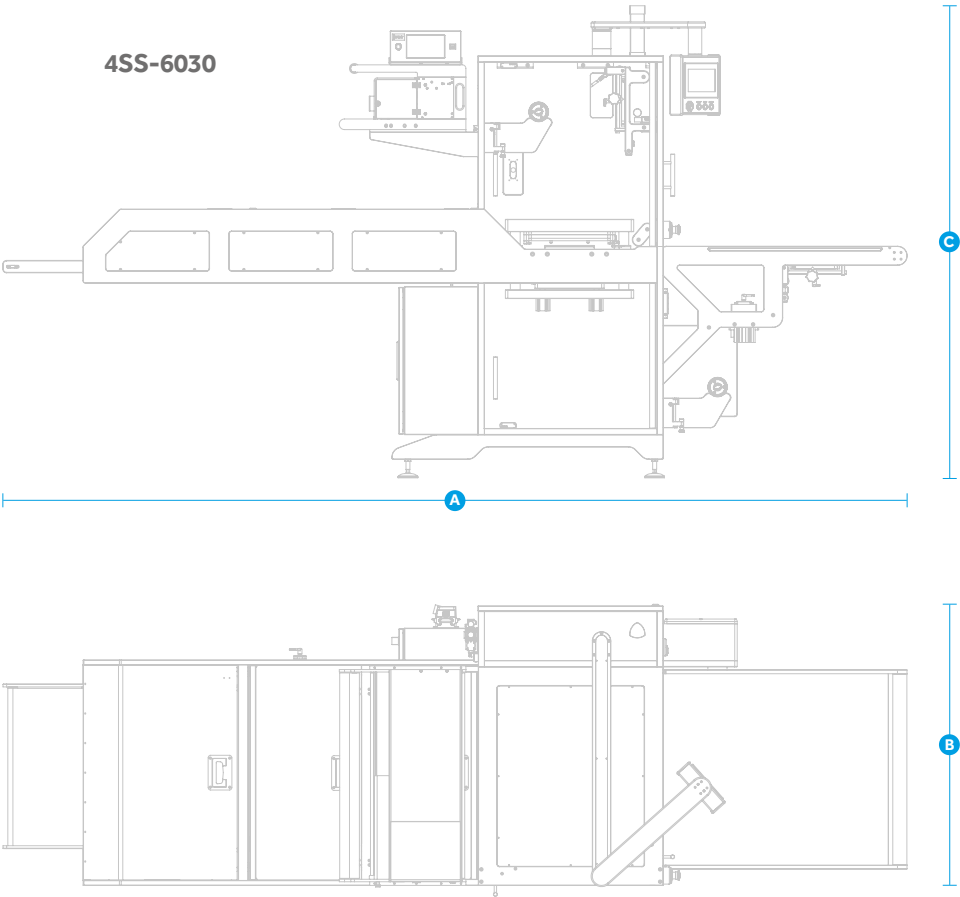






shawpak 4-Side Seal Pack and Machine Sizes

Model	Max Single Pouch Size	Machine Dimensions		
		A	B	C
4SS-6030	600mm x 300mm	3600mm	1100mm	1900mm



4SS Specifications

Main Machine	Standard	Option
Index Drive	●	
Sealing Head		
Airflex Form Bellows with Digital Pressure Control	●	
Stepper Driven Toggle Lock Form Head	●	
Base Web Unwind		
Base Web Stepper Drive Unwind	●	
Base Web Manual Tracking Adjustment		○
Base Web Edge Detection		○
Base Web Auto Tracking Adjustment		○
Splice Table		○
Top Web Unwind		
Top Web Stepper Drive Unwind	●	
Top Web Manual Tracking Adjustment		○
Top Web Edge Detection		○
Top Web Auto Tracking Adjustment		○
Auto Print Registration		○
Splice Table		○
Cutting		
Standard Crosscut Flying Knife	●	
Multi Lane Slit Cut	●	
Thumb Hole Punch (base web)		○
Thumb Hole Punch (top web)		○
Outfeed		
Standard Outfeed Conveyor	●	

Overprint and Coding	Standard	Option
Thermal Inkjet Printer		○
Thermal Transfer Printer		○
Vision & Inspection		
Print Inspection		○
Splice Detection		○
Loading Area		
Bench Top with Loading Station	●	
Back-lit Shadow Boards for Accurate Positioning	●	
External Finish		
Natural Anodise	●	
Control		
7" Colour Touch Screen	●	
Data Logging to SD Card		○
Data Logging via Ethernet Connection		○
Cabinet & Guarding		
Electrical/Pneumatic Enclosures	●	
Clear Acrylic Guarding & Doors	●	
High Impact Guarding & Doors		○
Machine Feet & Castors	●	
Bolt Down Machine Feet & Castors		○
Integration		
Robot Loading		○



Seal head

When the materials and product arrive at the seal station the seal plate will operate to pre-defined time and pressure settings. The Airflex bellows system ensures the seal tool produces a perfectly even pressure over the required seal area. All process parameters are monitored each machine cycle and measured back to ensure the cycle has been completed to the set specification. All settings are logged for each job and restored the next time the particular tool set is to be run.

Lane Slit / Crosscut

After the sealed materials have left the sealing head they are indexed through the slitting unit. This will split the materials into lanes determined by the size of pouch. The widths can be set at any position to size the pouches accordingly, or removed all together to produce a full width single pouch. After being slit into lanes, the pouches are then index into the crosscut unit which cuts them fully from each other and creates the final pouch size.

Outfeed Conveyor

Once the pouches have been cut, they will move onto the outfeed conveyor. This conveyor will index the pouches out of the cutting mechanism and onto the discharge conveyor. Pouches can be indexed individually out of the machine, or can be stacked and shingled according to pre-set counters. The pouches are then indexed out for removal by end-of-line operatives.

HMI

All functions of the machine are controlled via the machine's touchscreen HMI. Critical operational parameters such as the seal temperature, force and dwell time are monitored by inbuilt systems and will prevent machine operation should they move out of a pre-set tolerance. This makes the 4SS machine a fully-validatable system.

The 4SS



SUMMARY

The **shawpak** pro is a simple, but thorough, comprehensive machine combined with superior engineering gives the **shawpak** to produce packaging with the strictest control and demanding specifications.

Its ability to produce a wide range of materials ranging from 100gsm to 250gsm with output rates of up to 25 per minute. The compactness of the machine and its true portability make it a machine for any other current or future application.

Process



MARY

cess is inherently
he machines
control system,
superb mechanics,
ypak the ability
cks under the
and to the most
pecifications.

cess many wide
als is second to
t cycle speeds up
on flexible packs.
s of the machine
ability are unlike
ently available!

Base Web Unwind

The Shawpak 4SS has a unique stepper motor driven unwind to control tension to the exact tolerance of the material being used. As well as tension control, web tracking and alignment are critical to ensure the web feeds on to the drum centrally and is captivated by the grippers each side. Lateral position can be adjusted in 0.1mm increments either manually or automatically with the Base Web Auto Tracking Option.

1

Loading

Product are loaded on the flat loading area. Products are placed directly onto the material before it is indexed through the machine. The loading area is back-lit with LED lighting and a bespoke shadowboard employed so ensure that all products are accurately positioned. As well as simple manual loading, full robot integration can be implemented to pick and place products quickly and accurately.

2

Top Web Unwind

As with the base web, accurate tension and lateral tracking control of the top web are essential for reliable sealing. The 4SS top web unwind has the same stepper motor driven unwind as the base web unwind. Tension is also controlled in order to register pre-printed web material into position. As well as tension control, web tracking and alignment are critical to ensure the top web feeds on to the drum in the required position. Lateral position can be adjusted in 0.1mm increments either manually or automatically with the Top Web Auto Tracking Option.

3

4

Index

Once loaded, the materials will index and the top web of material will be rolled onto the base web to captivate the product prior to the sealing process. The index system consists of alternating fixed and moving clamps to ensure that web tension and control is never lost.



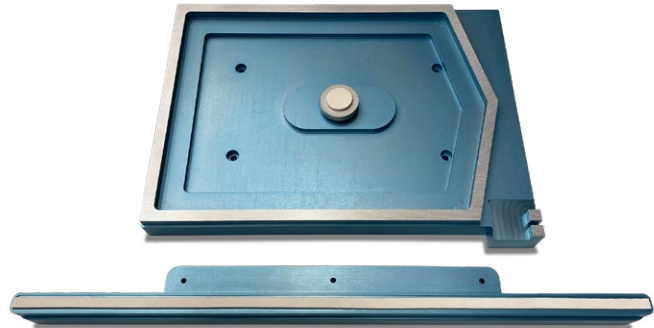
shawpak 4-Side-Seal Tooling

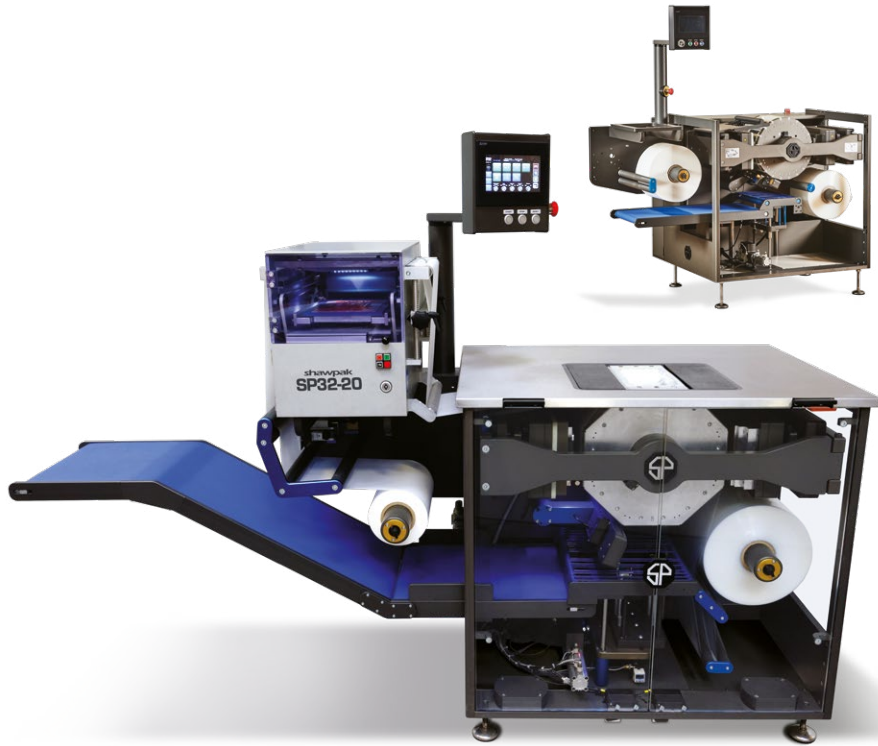
The tooling consists of the following:

- Sealing Platen
- Seal Base
- Loading Area Shadow Board

The tooling is light, easy to store, economic and above all quick and easy to change. The sealing platens are CNC-machined to accurately suit any seal profile and can be textured or ribbed to suit the pouch material choices.

Pouches can be made up to a maximum size of 600mm across the machine with a 300mm index length. A single pouch can be made at that size or any combination of pouches to make up the 600mm width. Narrower materials can be loaded onto the machine down to a minimum width of 250mm.





shawpak Medical Packaging Machinery - machines to make medical blisters & pouches

The 4SS-6030 4-Side-Seal Pouch Machine compliments the other machines in our range to provide a family of revolutionary machines to suit a variety of packaging solutions.

Shawpak Rotary Thermoformer

- 32-20
- 42-25
- 62-25

Shawseal Pouch Sealer

- PPS300TS2
- PPS400TS2
- PPS500TS2
- PPS600TS2





RIVERSIDE R

Riverside Medical Packaging Co Ltd

Since 1979, Riverside Medical Packaging has established itself at the forefront of the healthcare industry. An innovative supplier, providing packaging, contract packing, validation and engineering services. Our state-of-the-art 6000sq metre manufacturing facility has been tailor-made specifically for the manufacture of medical packaging and products.

We currently have eight cleanrooms (two Class 8 and six Class 7), each being either process or product specific. These superb manufacturing cells are testament to our commitment to invest and develop to support the needs of the market.

Over the years, one of our key strengths has been our in-house engineering and design facility.



Our philosophy has been to design, develop and build the majority of our production and packaging equipment in-house. This gives us true flexibility, enabling us to offer the service and technical innovation our customers have come to expect.

From our many years experience in machinery design a new concept was conceived - the **shawpak**. A revolutionary thermoforming machine unlike any other available.

Now Riverside has invested in a new 1200sq metre design and engineering facility for the production of these groundbreaking machines.



shawpak

the revolution is here



shawpak

Riverside Medical Packaging
Newmarket Drive, Derby. DE24 8SW.

T +44 (0) 1332 579025

W www.shawpak.co.uk

E sales@shawpak.co.uk

shawpak USA

Suite I, 10340 Camino Santa Fe,
San Diego, CA 92121, USA.

T +1 (973) 281 2960

W www.shawpakusa.com

E sales@shawpakusa.com