



CABINET IQ

**Your Complete Guide
to a Stress-Free
Kitchen Remodel**



CABINET IQ

A kitchen remodel is one of the biggest investments you'll make in your home. According to the National Kitchen and Bath Association, the average homeowner completes just 1.2 kitchen remodels in their lifetime. That means most people go into this process without any prior experience — surrounded by options, overwhelmed by choices, and unsure who to trust.

Making the wrong call doesn't just cost money. It costs time, sleep, and more money. Wrong companies show up late, skip critical steps, and leave you holding the bag when something goes sideways on install day.

This guide exists to change that. We'll walk you through exactly what to look for in a remodeling partner, show you how Cabinet IQ delivers a different experience, and give you the tools to start your project with total confidence.



What to Look for in a Cabinet Company

A kitchen remodel is one of the biggest investments you'll make in your home. According to the National Kitchen and Bath Association, the average homeowner completes just 1.2 kitchen remodels in their lifetime.

That means most people go into this process without any prior experience — surrounded by options, overwhelmed by choices, and unsure who to trust.

1. They Measure Twice, Not Once

The most common source of installation-day disasters is a single measurement taken by a salesperson and never verified.

A serious cabinet company sends an operations team member to your home before your order is placed — to confirm every dimension, catch potential conflicts, and protect your timeline.

2. Full-Time Installers, Not Subcontractors

Once your cabinets are purchased, some companies hand you off to a subcontractor they barely know. Your project is now in the hands of someone who has no stake in your experience. Full-time, trained installers are accountable. They show up, they perform, and they answer for their work.

3. Dedicated Project Management

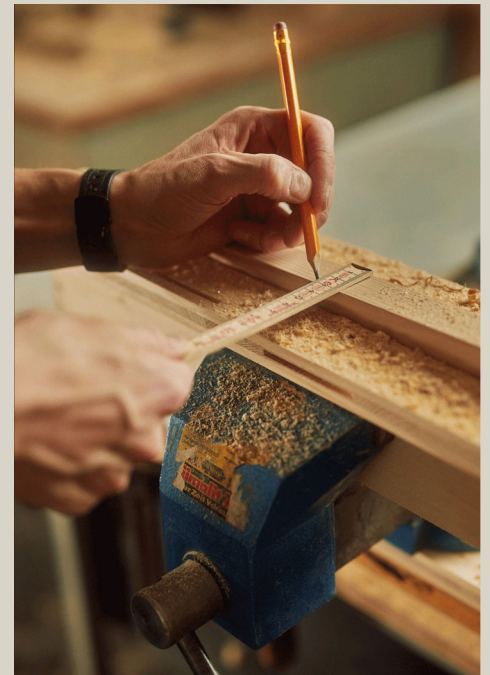
A designer who closes the sale and disappears isn't enough. You need a dedicated point of contact who tracks your materials, manages your schedule, and communicates proactively when anything changes.

4. Pre-Construction Checklists

First-time remodelers don't know what they don't know. A great company anticipates this and walks you through exactly what needs to happen before install day — so nothing falls through the cracks and nobody gets blamed for a delay that was preventable.

5. A Track Record You Can Verify

Reviews matter. Not the hand-selected testimonials on a company's own website — the real ones on Google, where anyone can post and nothing gets filtered. Look at volume, recency, and how the company responds when something goes wrong.



The Cabinet IQ Difference

Cabinet IQ is part of a national network that has completed thousands of kitchen and bath remodels. Here's how we stack up:

	Cabinet IQ of Portland	Other Cabinet Companies
On-Site Remeasure	✓ We send a project manager to remeasure your space and run a 57-point QA review before your order is placed.	✗ Most measure once. If a mistake is made, you find out on install day.
Quality Assurance	✓ 57-point pre-construction checklist on every single project, every time.	✗ Most assume everything is fine. It often isn't.
Installer Model	✓ Full-time, trained installers who are accountable from start to finish.	✗ Subcontracted installers. Your project is at the mercy of whoever is available.
Cabinet Selection	✓ Entry-level to premium — we match the product to the project, not the other way around.	✗ Most sell one tier. You fit their product or you go elsewhere.
Project Management	✓ A dedicated project manager and scheduler track your materials and keep your timeline on track.	✗ Most hand off to a sub after the sale. You're on your own.
Client Prep	✓ We walk you through exactly what needs to happen before install day so nothing gets delayed.	✗ Most assume you've done this before. Delays become your problem.
Reputation	✓ More 5-star reviews than the next several competitors combined, backed by a national network.	✗ Reviews are inconsistent and hard to verify.



Questions to Ask Every Cabinet Company

Before you commit to anyone, ask these questions. The answers will tell you everything you need to know.

- Do you remeasure on-site before placing the cabinet order?
- Who does the installation — your own employees or subcontractors?
- Will I have a dedicated project manager from design through completion?
- What happens if something is wrong on install day?
- Do you carry multiple cabinet lines, or just one?
- Can I see your Google reviews?
- What do I need to have ready before your team arrives?

A company that hesitates on any of these — or gives you a vague answer — is telling you something important. A company that answers each one directly and confidently has done this enough times to have real systems in place.



A Note From Our Owner



The right partner makes your kitchen remodel go exactly the way you're picturing it. The wrong one turns a 6-week project into a 4-month ordeal — with added costs, missed milestones, and a contractor who stops returning calls mid-job.

Cabinet IQ of Portland was built to be the partner you actually want on a project like this. We're part of a national network that has completed thousands of remodels, and we brought that playbook to the Portland market because we saw firsthand how many homeowners were getting let down by companies that oversell and underdeliver.

We remeasure before we order. We use full-time installers. We assign a dedicated project manager. And we don't consider a job done until you're satisfied with every door, drawer, and countertop.

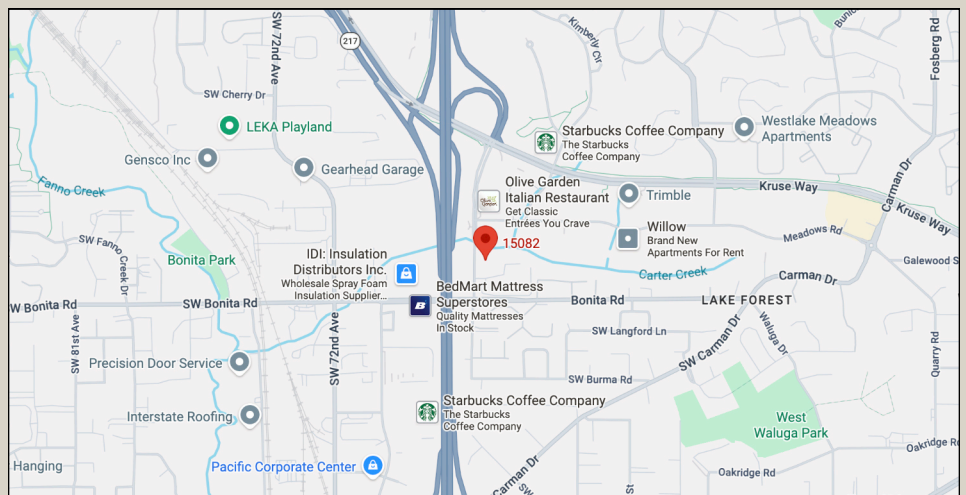
We're always happy to do a free design consultation and answer any questions you have before you commit to anything. Come see us in our Lake Oswego showroom, or give us a call. Either way, we'd love to earn your business.

Jordan Showers
Owner, Cabinet IQ of Portland
503-616-2323

Ready to Get Started?

Visit Our Showroom

15082 Bangy Rd
Lake Oswego, OR 97035



Measuring Guide

Use this guide to measure your space and create a simple floor plan before your design consultation. The more detail you bring, the faster and more accurate your design will be.

Name	Phone
Email	Project Address
Door Style / Finish	Designer

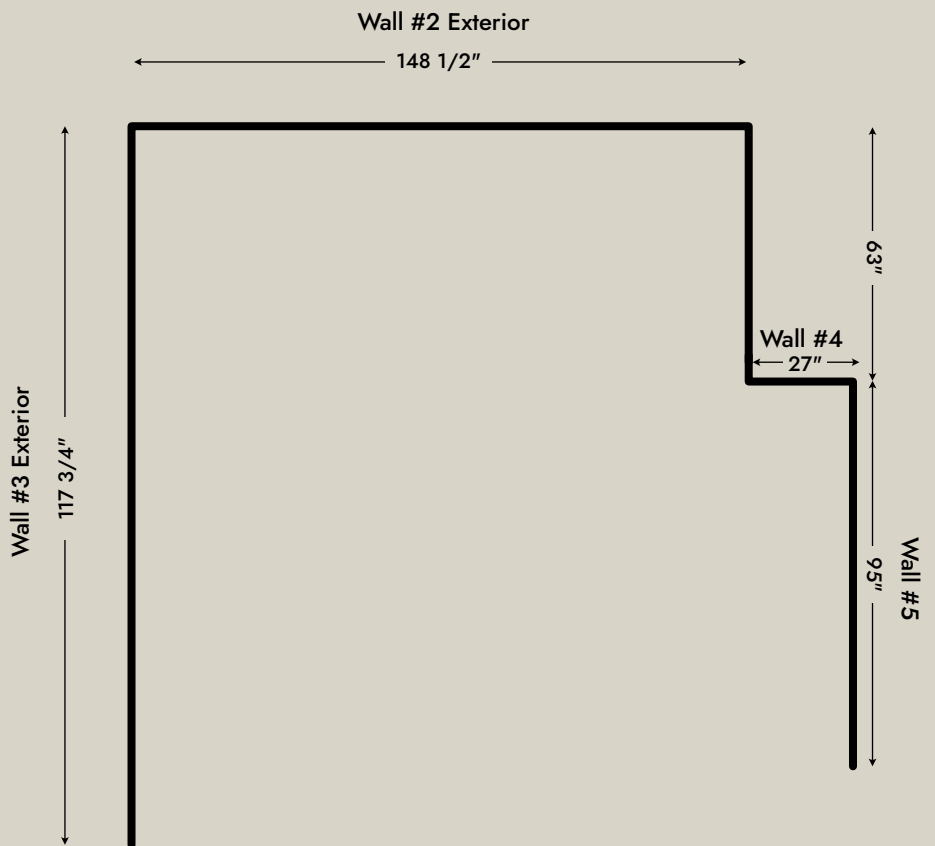
Step 1

Measure Your Space

Starting in the left corner, measure each wall that will contain cabinets and record those measurements (in inches) on the Floor Plan Design Grid at the end of this guide.

Number each wall on your floor plan.

Tip: Measure the full length of each wall, corner to corner.

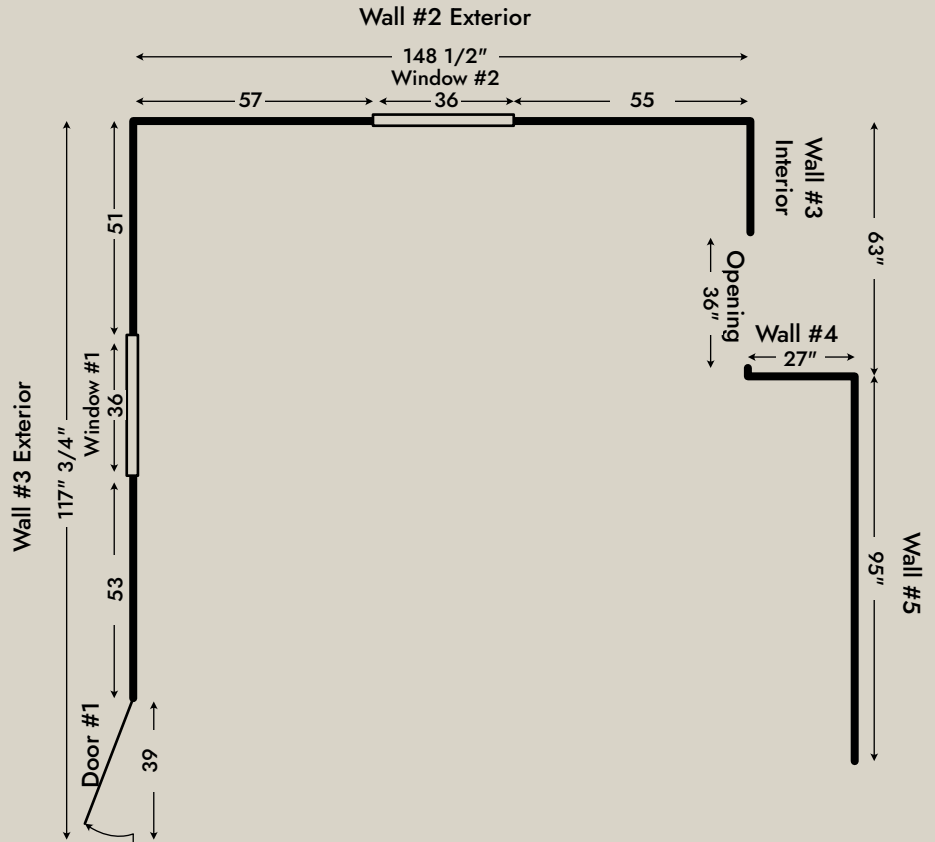


Step 2

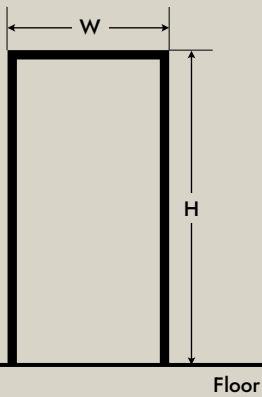
Windows & Room Openings

Locate and measure all doors, windows, and room openings.

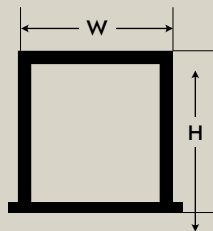
Record and number each one on your floor plan grid, then fill in the dimensions below.



Door



Window



Include trim and casing in your measurements.

Doors & Opening Measurements

#	Type (Door/Opening)	Width	Height
1			
2			
3			
4			

Window Measurements

#	Location/Notes	Width	Height
1			
2			
3			
4			

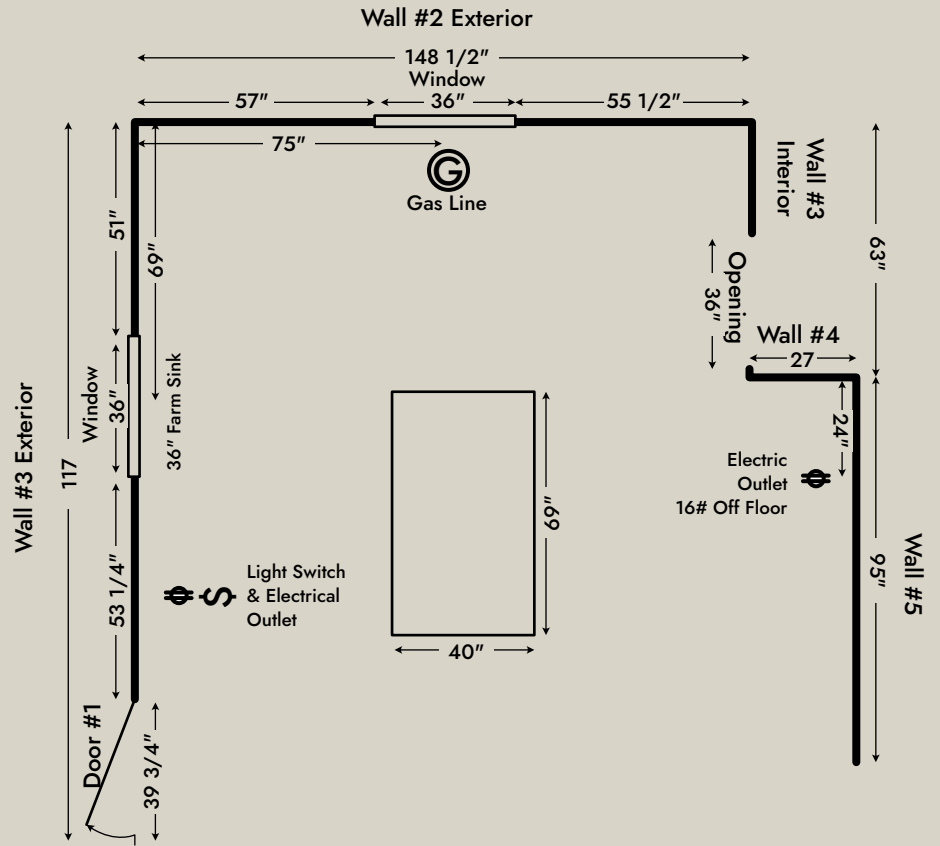


Step 3

Obstacles

Note any obstacles such as electrical outlets, vents, pipes, radiators, or existing islands.

Record and number each one on your grid.



Step 4

Appliances

Standard appliances typically come in standard sizes, but always provide the actual model and dimensions, especially for luxury appliances like cooktops, range hoods, and wine chillers, which vary significantly.

Tip: Send manufacturer spec sheets and installation guides to your designer if you have them.

Appliance	Brand / Model	Width	Depth	Height
Range				
Refrigerator				
Dishwasher				
Microwave				
Cooktop				
Oven				
Hood				
Other				



Step 5

Ceiling Height

Ceiling height determines which wall cabinets and crown molding work for your space. Measure in at least three spots and record the shortest dimension.

Older homes often have soffits above wall cabinets that need to be accounted for in your design.

Ceiling Height:

Does the space have soffits?

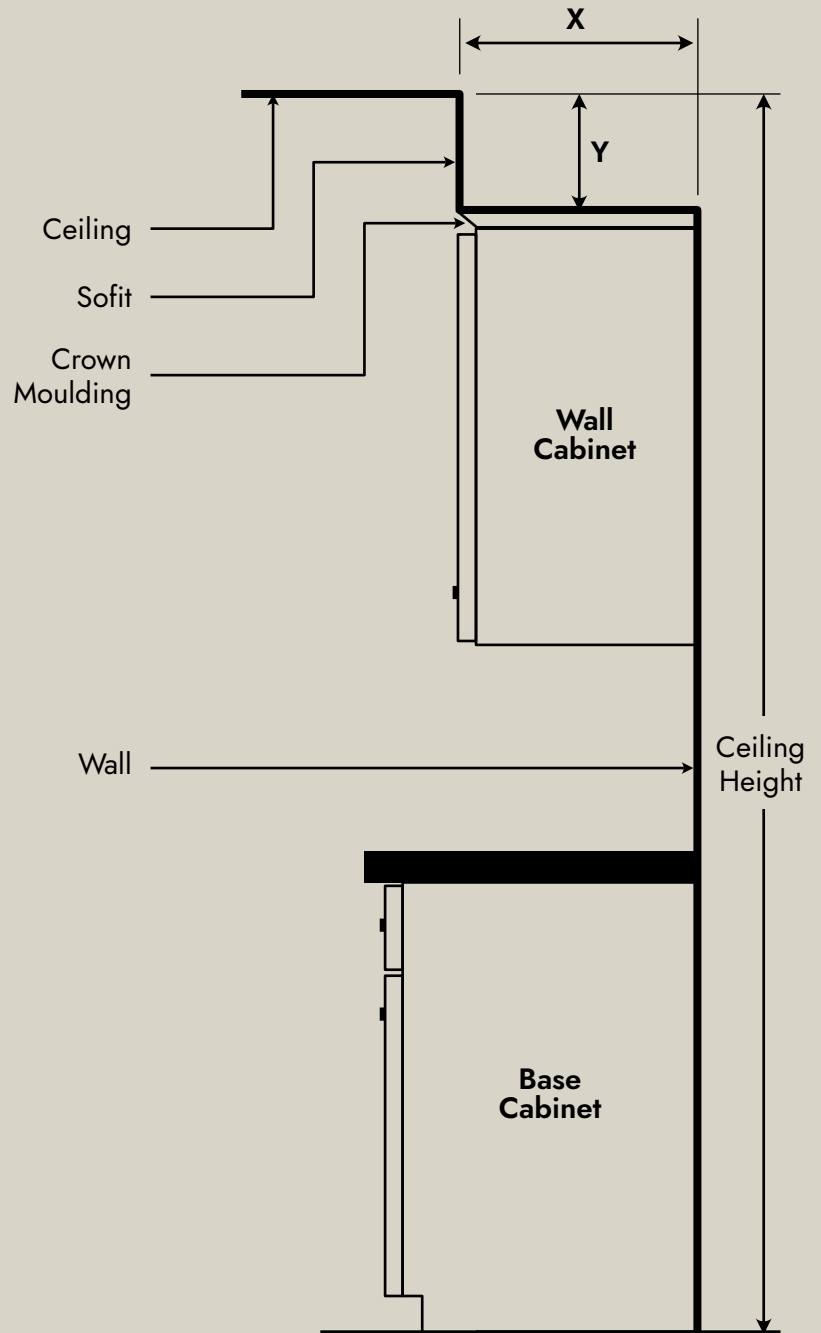
Yes No

Do you plan on keeping existing soffits?

Yes No

Items of interest (check all that apply):

- Base Molding
- Crown Molding
- Decorative Door Panels
- Garbage Pull-Out Cabinet
- Glass Doors
- Lazy Susan
- Open Shelves
- Roll-Out Trays
- Soft Close Doors
- Wine Storage
- Wood Hood



Step 6

Photos & Submit

Take photos of each wall that will contain cabinets. Include any obstacles or unusual features that were hard to capture in your drawing.

Bring everything to our showroom or email it directly to your designer.

Showroom: 15082 Bangy Rd, Lake Oswego, OR 97035

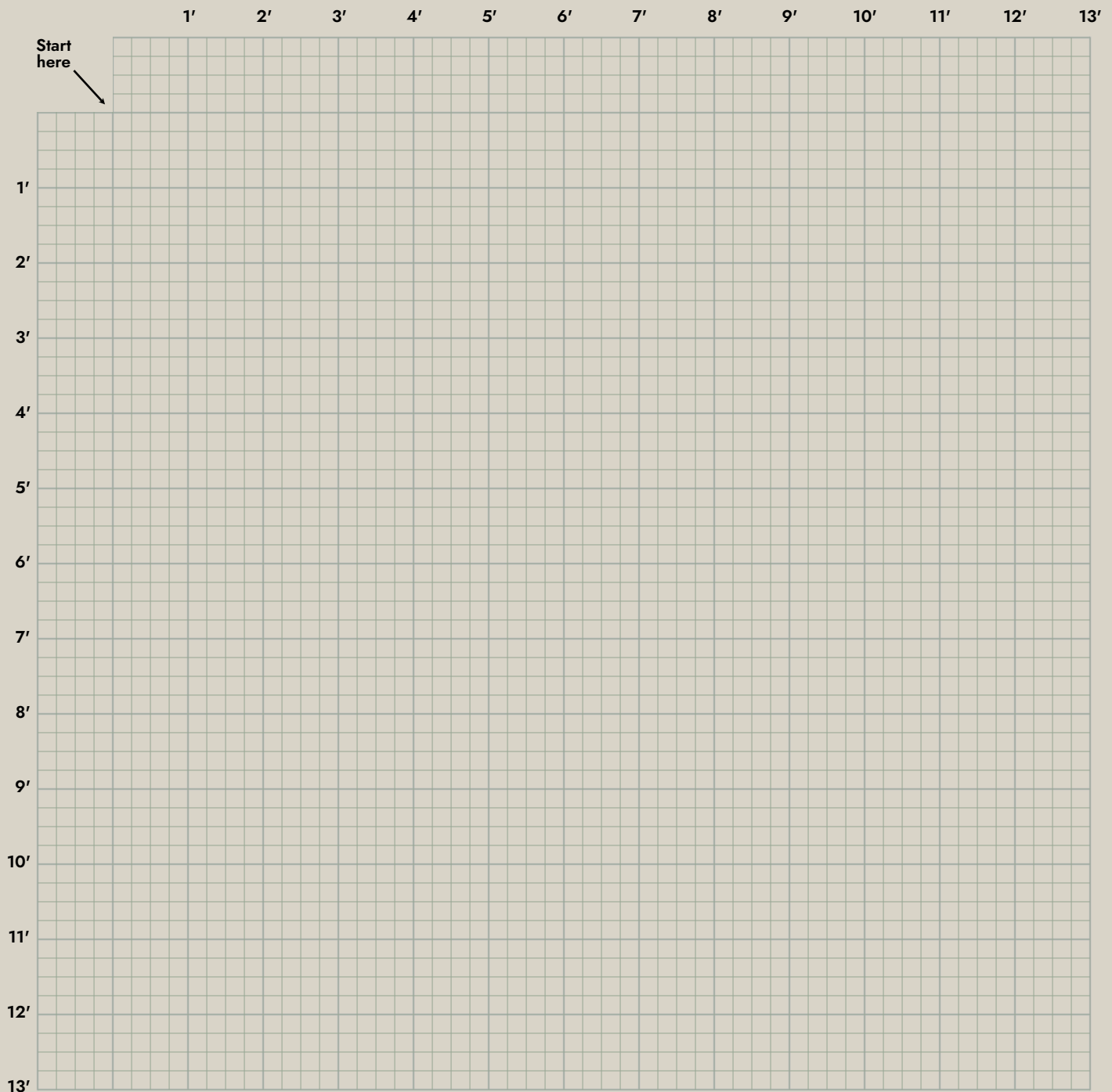
Phone: (503) 616-2323



Floor Plan Design Grid

Use the grid below to draw an aerial view of your space. Each small square = 3" x 3".
Each large square = 12" x 12".

See steps 1–6 to complete your floor plan. See example on next page.



Example Floor Plan

