



# Connecticut Report Cards

Select a District

Select a School or Leave Blank for District/State Report Card

Submit

**How to use the report card:** Click the headings below (Students, Educators, Instruction/Resources, Performance) to expand(+) and collapse(-) a section and view associated charts.

Click on a chart or chart title to disaggregate data by student group (e.g., race/ethnicity, gender, free/reduced-price meal eligibility, English learner, or disability status.)

List of Schools Identified for State Support and Recognition (.xlsx)

## Manchester High School

Website:

<http://www.mpspride.org/>

Phone: 860-647-3530

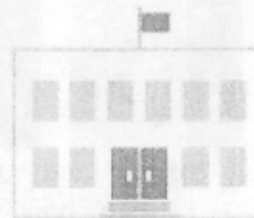
Printable Reports  
(PPRs)

Next Generation  
Accountability Report

1,673 students

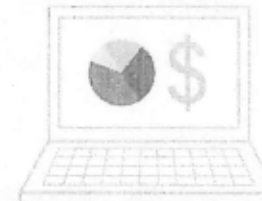


Grades: 9-12



\$21,917 per pupil

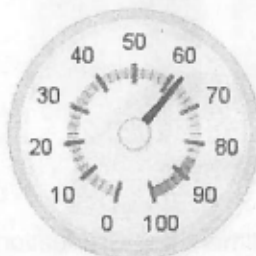
New in 2020!



189.5 certified staff  
FTE

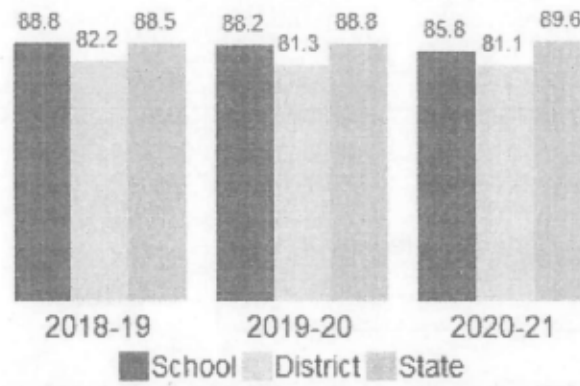


Accountability  
Index: 62.3



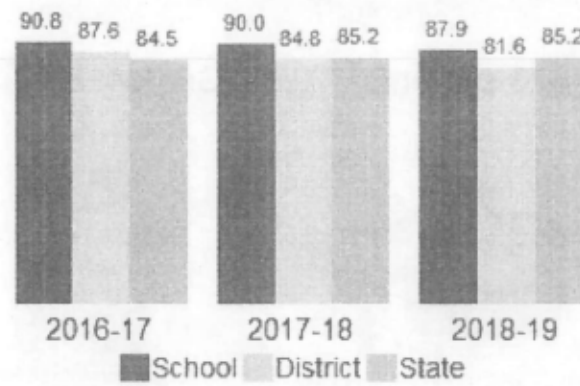
### Four-Year Graduation Rate ⓘ 🗲

Target: 94



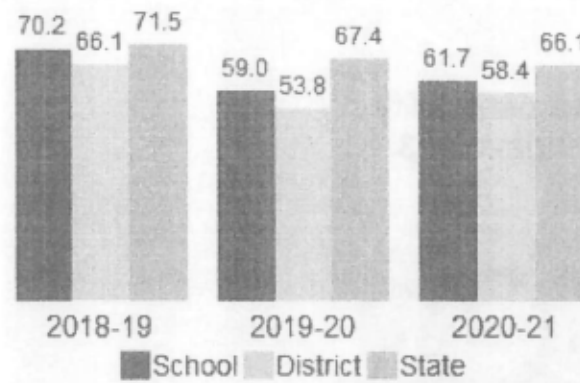
### Six-Year High Needs Graduation Rate ⓘ 🗲

Target: 94



### College Entrance ⓘ 🗲

Target: 75



Detailed Report on College Enrollment and Graduation



# Connecticut Report Cards

Select a District

Avon School District

Select a School or Leave Blank for District/State Report Card

Avon High School

Submit

**How to use the report card:** Click the headings below (Students, Educators, Instruction/Resources, Performance) to expand(+) and collapse(-) a section and view associated charts. Click on a chart or chart title to disaggregate data by student group (e.g., race/ethnicity, gender, free/reduced-price meal eligibility, English learner, or disability status.)

List of Schools Identified for State Support and Recognition (.xlsx)

## Avon High School

Website:

<https://ahs.avon.k12.ct.us/>

Phone: 860-404-4740

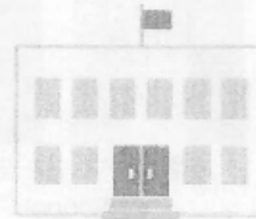
 Printable Reports  
(PPRs)

 Next Generation  
Accountability Report

923 students

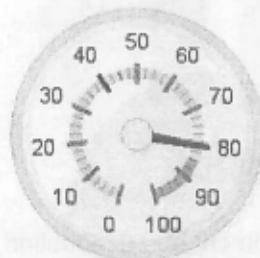


Grades: 9-12

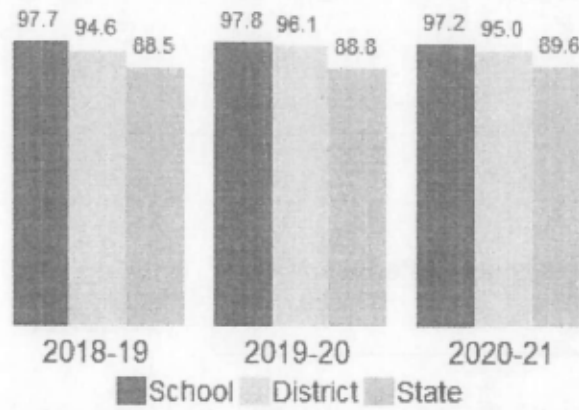


\$21,253 per pupil

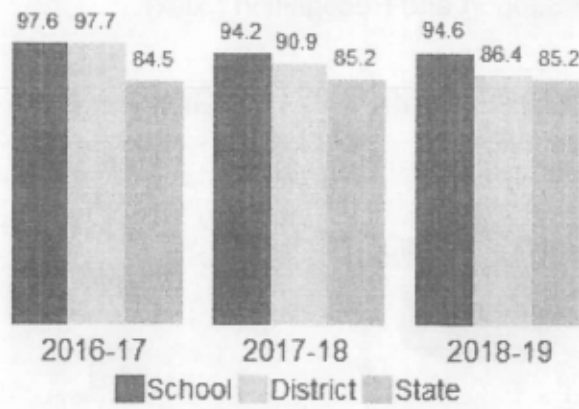
New in 2020!

95.2 certified staff  
FTEAccountability  
Index: 80.6

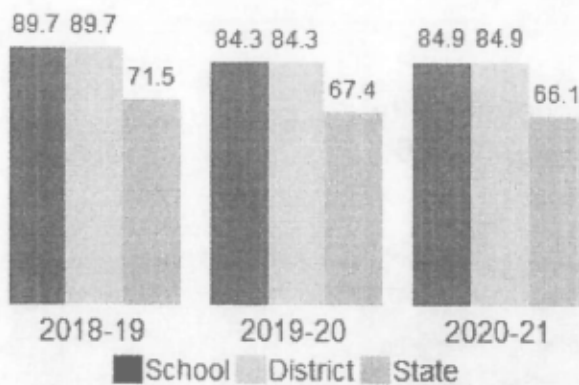
**Four-Year Graduation Rate** ⓘ ✓  
Target: 94



**Six-Year High Needs Graduation Rate** ⓘ ✓  
Target: 94



**College Entrance** ⓘ ✓  
Target: 75



Detailed Report on College Enrollment and Graduation