

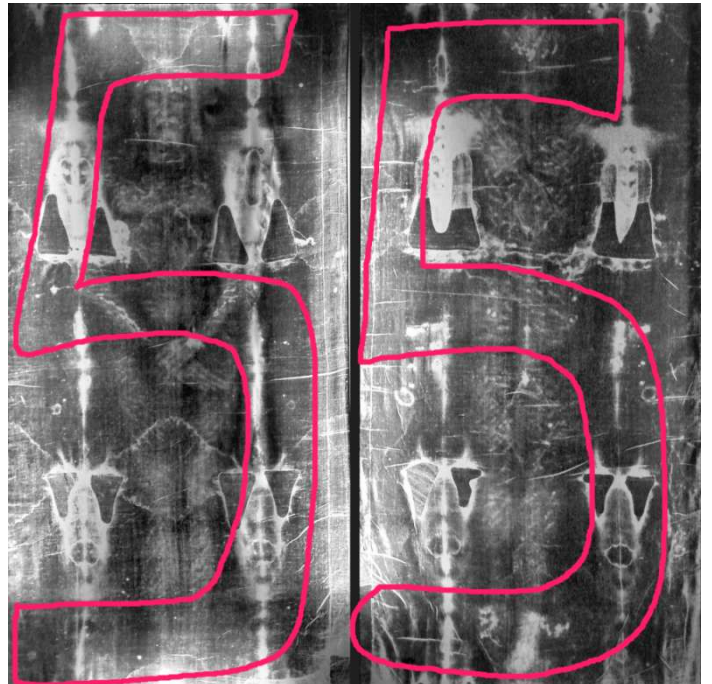
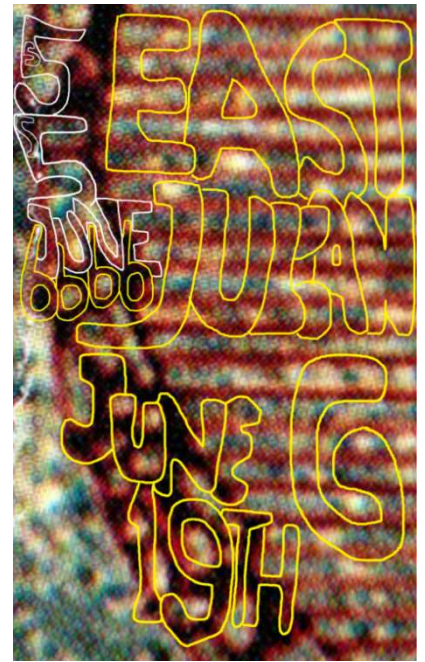
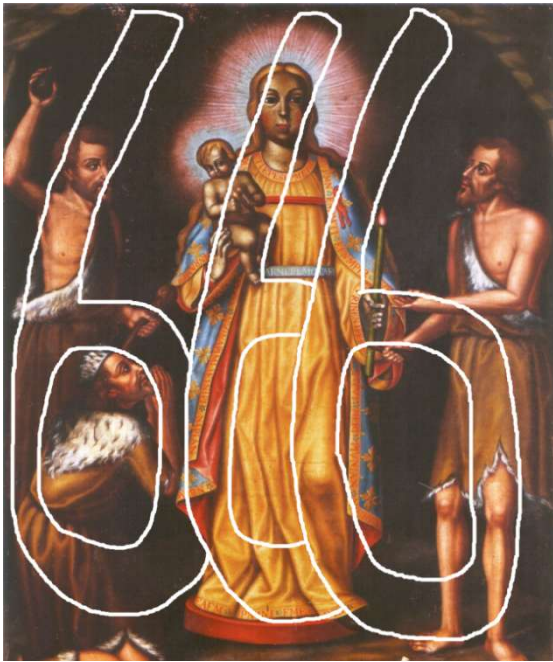
XX OHW Date / Confirmation Images

This section is almost entirely taken from “*The One Hour War: Date & Time,*” and added to the end of STSN in the days before the ONE Hour War (OHW) to reach more people. The following 27 pages, comprised of images and image message concealed in 6 sacred Artworks and confirm the date and time of the OHW of Revelation, which will effectively destroy the US and seriously harm their allies. The sacred *images* connect to *Image Crimes*, of Revelation, which are spread through our eyes.

On the Yin/Eastern Calendar, the OHW will occur on **5/5 (5th Month 5)**, of Yin year **4724**.

On the Julian calendar, the OHW will occur on **6/6/6**, that is **June, 6th, 2026**.

On the widely used Western Gregorian calendar, the OHW will occur **June 19th, 2026**.

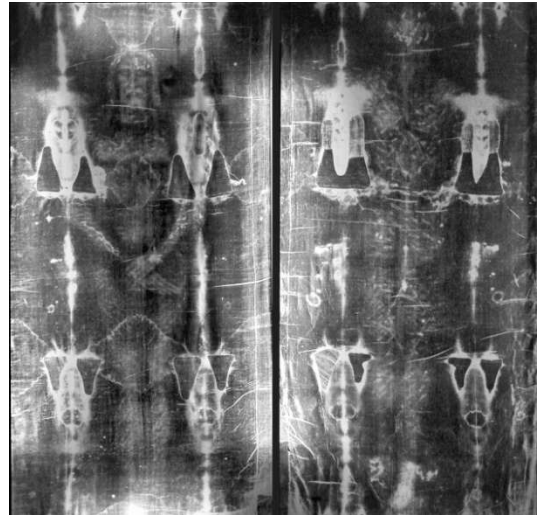


Sacred Artworks/Sources

Below, are the 6 sacred artworks/sources I've used for some of my Revelation work. All of these artworks carried information related to the One Hour War. To learn more about these works, see related books on my website, or your local library. The OHW date information is presented in large images on the following 27 pages. The times are provided on the final page.



The Candelaria Likeness, 1426



The Shroud of Turin, 77 AD (photo negative, 1978)



Nuestra Señora de Guadalupe, 1531



The Elder Badge, 1777, 1787

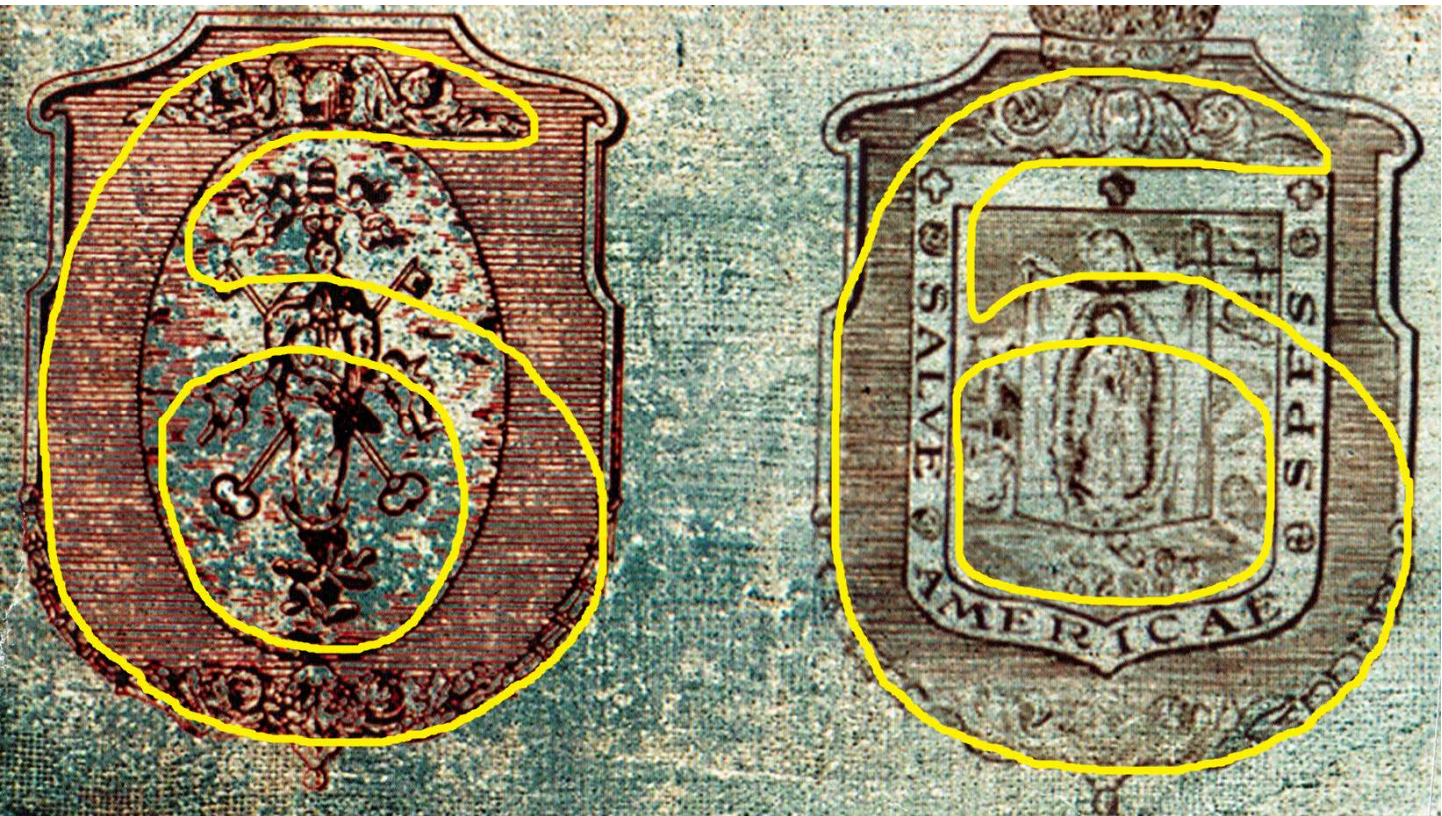
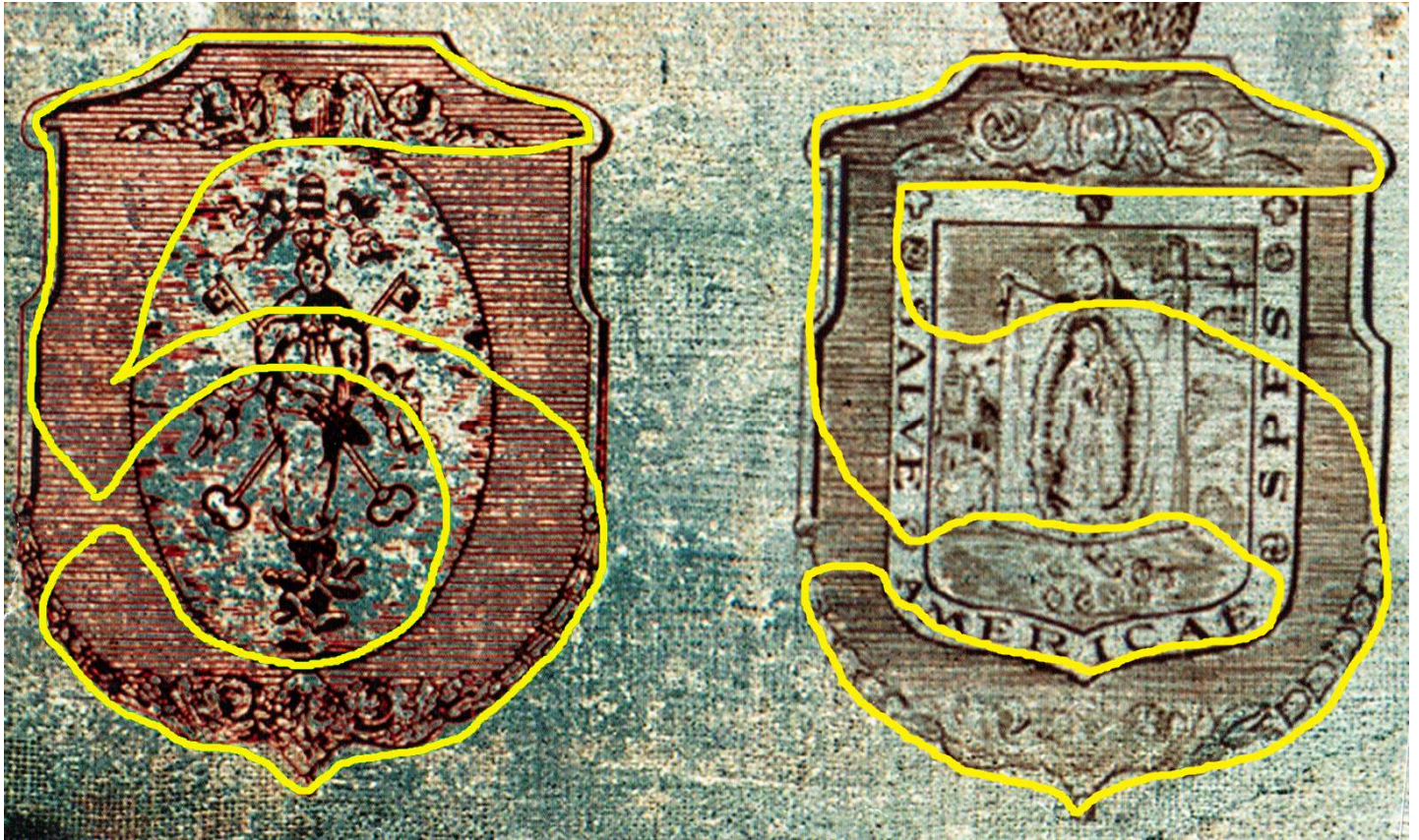


The Juan Diego Badge, 1777, 1787



The Sacred Image Key, 2025

The One Hour War dates, Julian and Yin, in the Elder and Juan Diego badges.



The One Hour War date, on all calendars, in the Elder Badge (lower left corner).



**Below, an enlargement of the Yin OHW date
in the Elder Badge, lower left corner.**



**The year of the OHW, in the
Elder Badge, lower left corner.**



5/5, the Yin One Hour War date, in the Candelaria Likeness (small 5 in the larger 5).

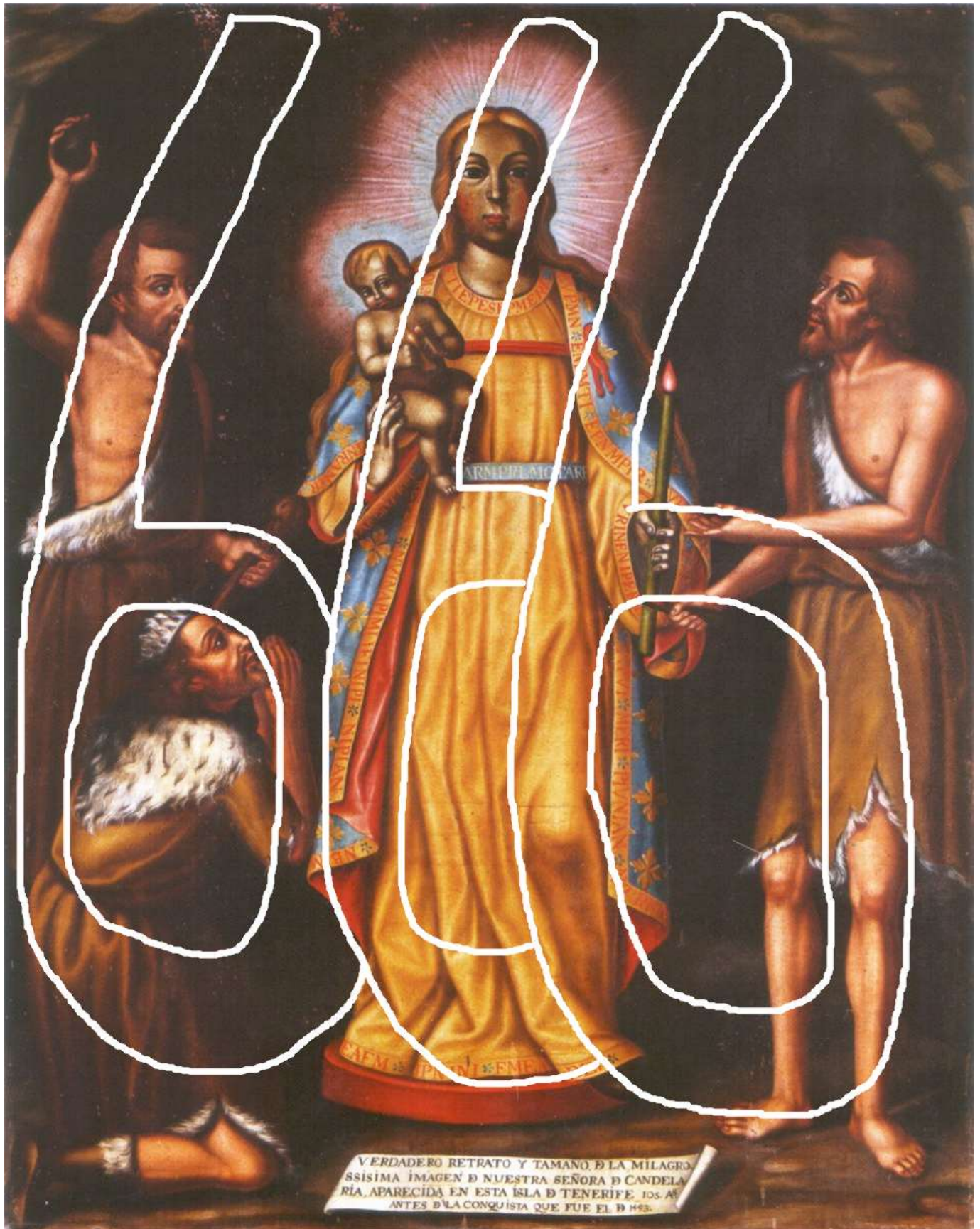


5/5, the Yin One Hour War date, in the Candelaria Likeness.



VERDADERO RETRATO Y TAMANO, D LA MILAGRO
SSISIMA IMAGEN D NUESTRA SEÑORA D CANDELA
RIA, APARECIDA EN ESTA ISLA D TENERIFE, 105 AÑ
ANTES D LA CONQUISTA QUE FUE EL D MES.

6/6/6, the Julian One Hour War date, in the Candelaria Likeness.

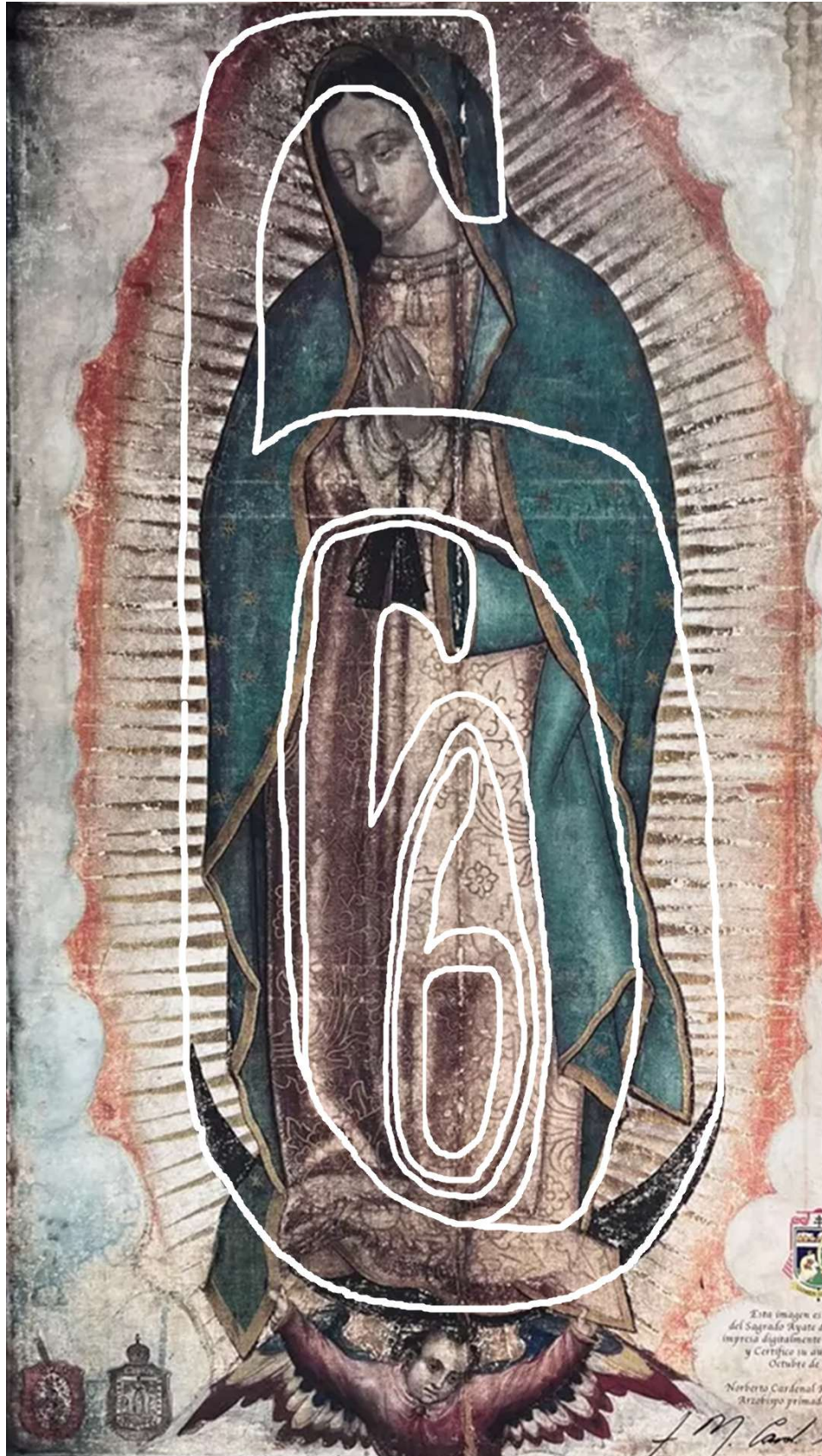


VERDADERO RETRATO Y TAMANO, D LA MILAGRO
SSISIMA IMAGEN D NUESTRA SEÑORA D CANDELA
RIA, APARECIDA EN ESTA ISLA D TENERIFE, 105. AÑ
ANTES D LA CONQUISTA QUE FUE EL D 1493.

5/5, the Yin One Hour War date, in Nuestra Señora de Guadalupe



6/6/6, the Julian One Hour War date, in Nuestra Señora de Guadalupe.



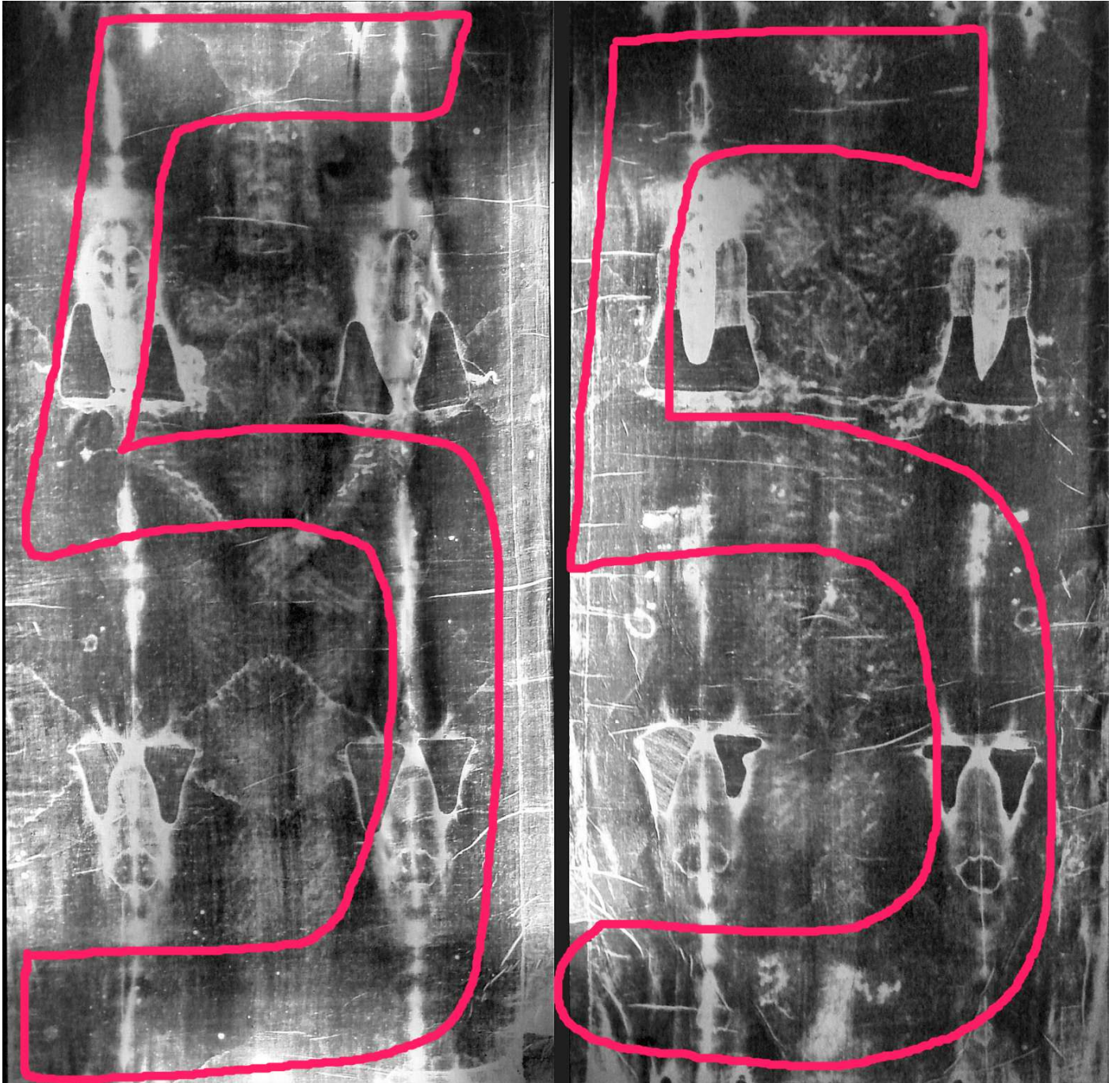
June 6th, the Julian One Hour War date, in The Shroud of Turin.



June 19th, the Gregorian OHW date, in The Shroud of Turin.



5/5, the Yin One Hour War date, in The Shroud of Turin.



6/6/6, the Julian One Hour War date, again, in the Shroud of Turin.



Both, the Julian (June 6) and the Yin (5/5) One Hour War dates, in the Shroud of Turin.



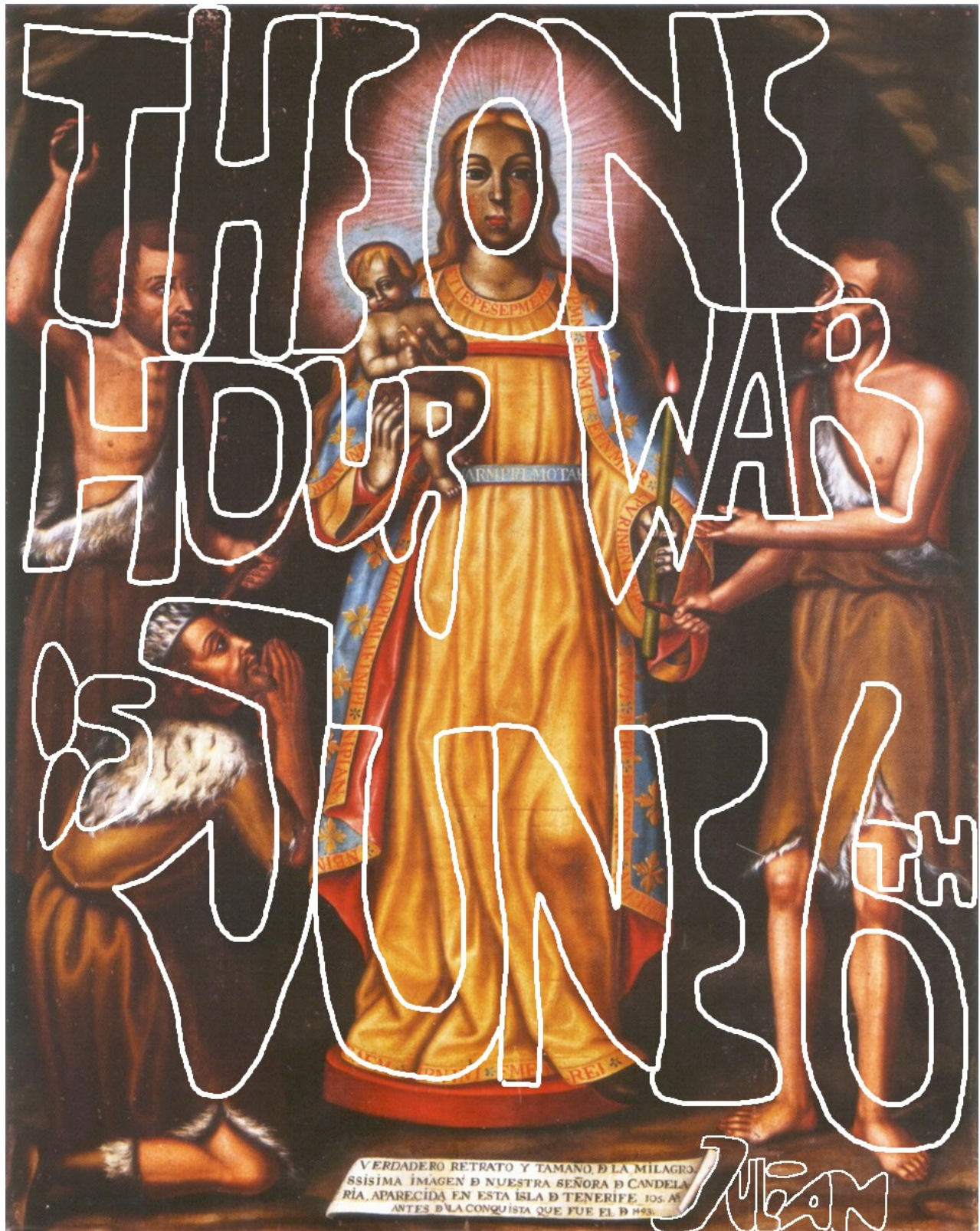
5/5 in the Sacred Image Key.



6/6/6 in the Sacred Image Key.

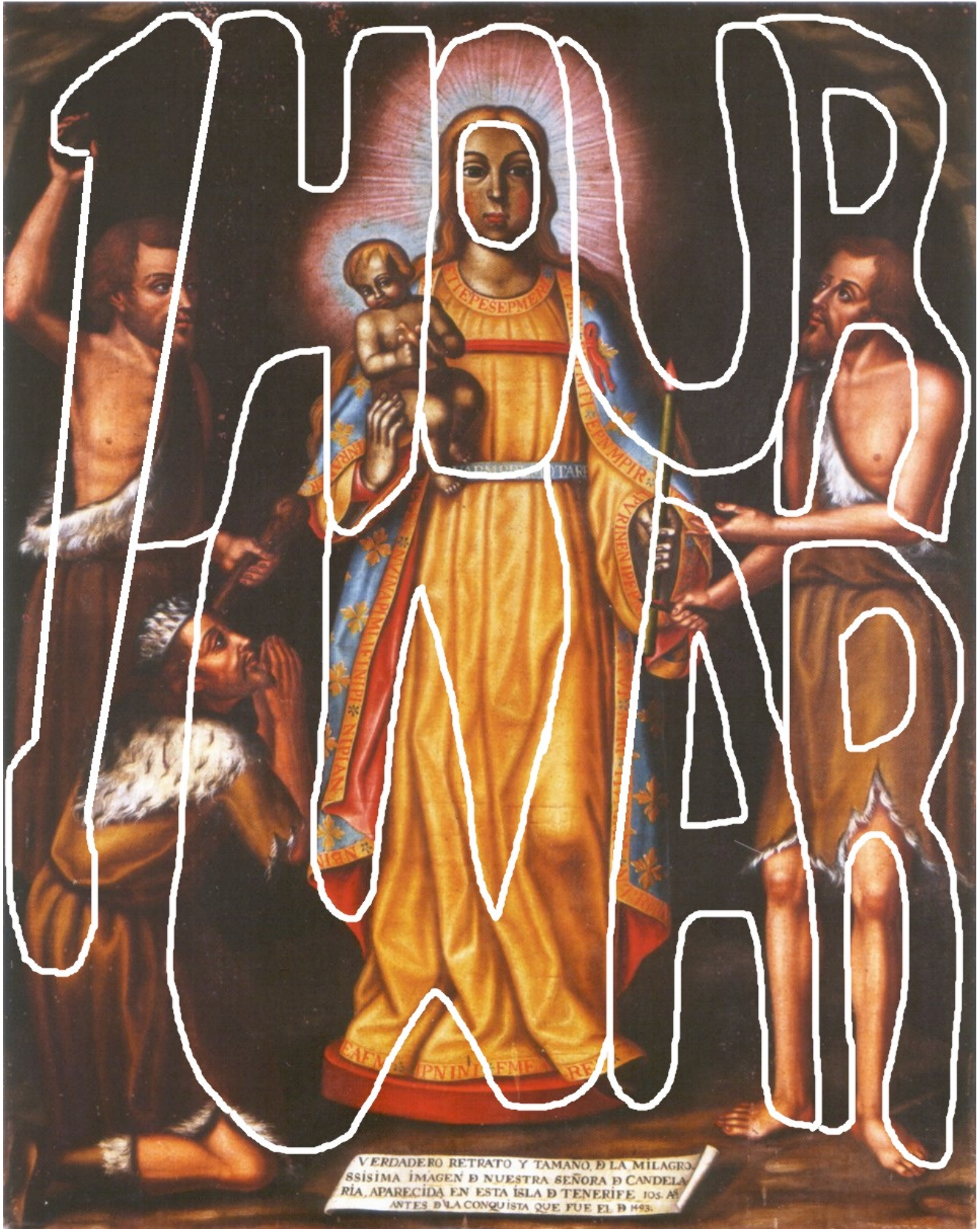


Messages in the Candelaria Likeness:



“The One Hour War Is June 6th” (2026), Julian.
-that’s June 19th, 2026, on the widely used Gregorian calendar.

The 1-Hour War.



VERDADERO RETRATO Y TAMANO, D LA MILAGRO-
SSISIMA IMAGEN D NUESTRA SEÑORA D CANDELA-
RIA, APARECIDA EN ESTA ISLA D TENERIFE, 105. AÑ
ANTES D LA CONQUISTA QUE FUE EL D 1493.

To get more information about the One Hour War visit www.TheZoneResistance.com.

On this and the following 5 pages, you'll find 6 or 7 "delayed" messages, which I found hidden in the six sacred images I have used in my Revelation work. The messages confirm the fact that the One Hour War was delayed by 163 days.

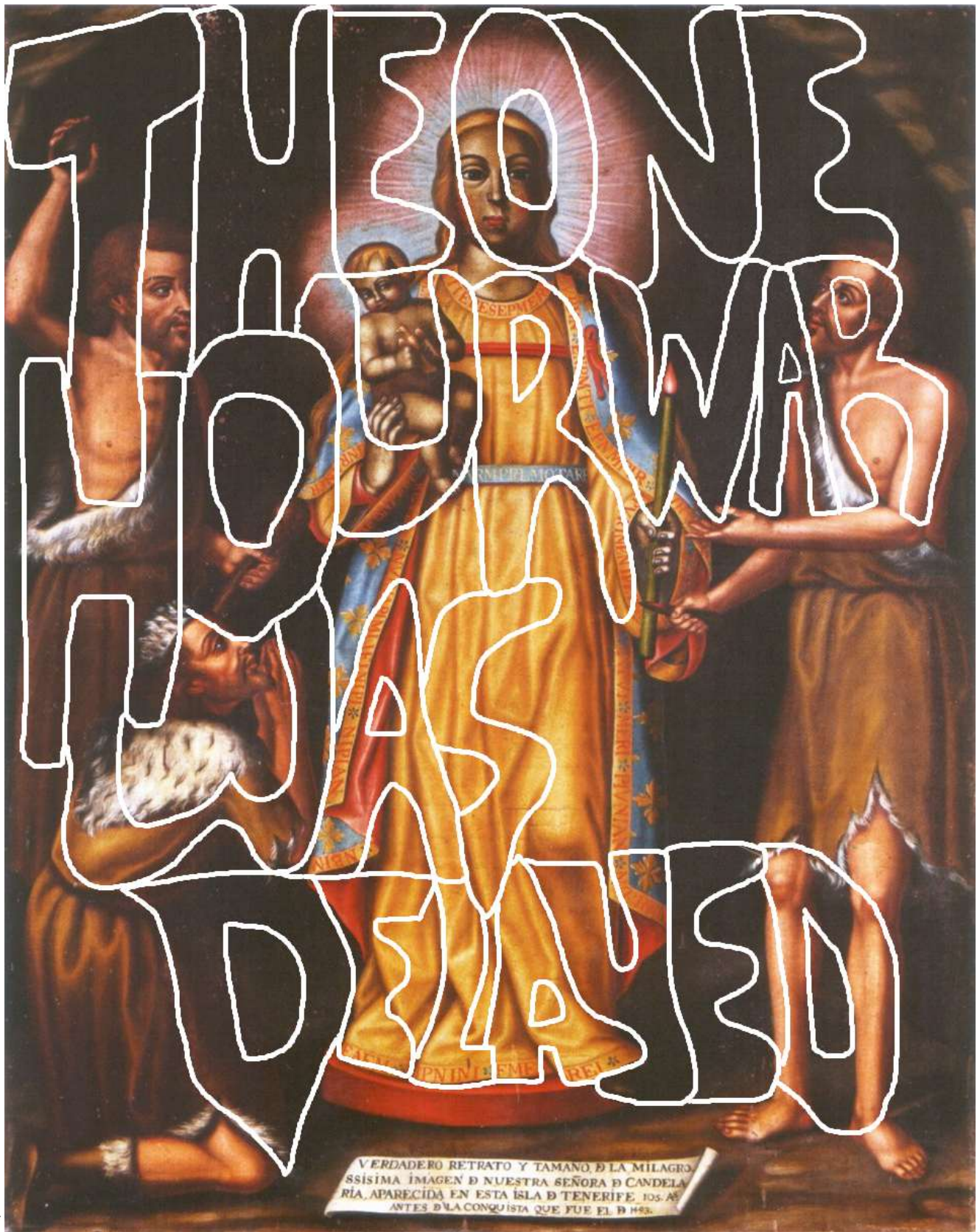
"The One Hour War Was Delayed," in the Shroud of Turin.



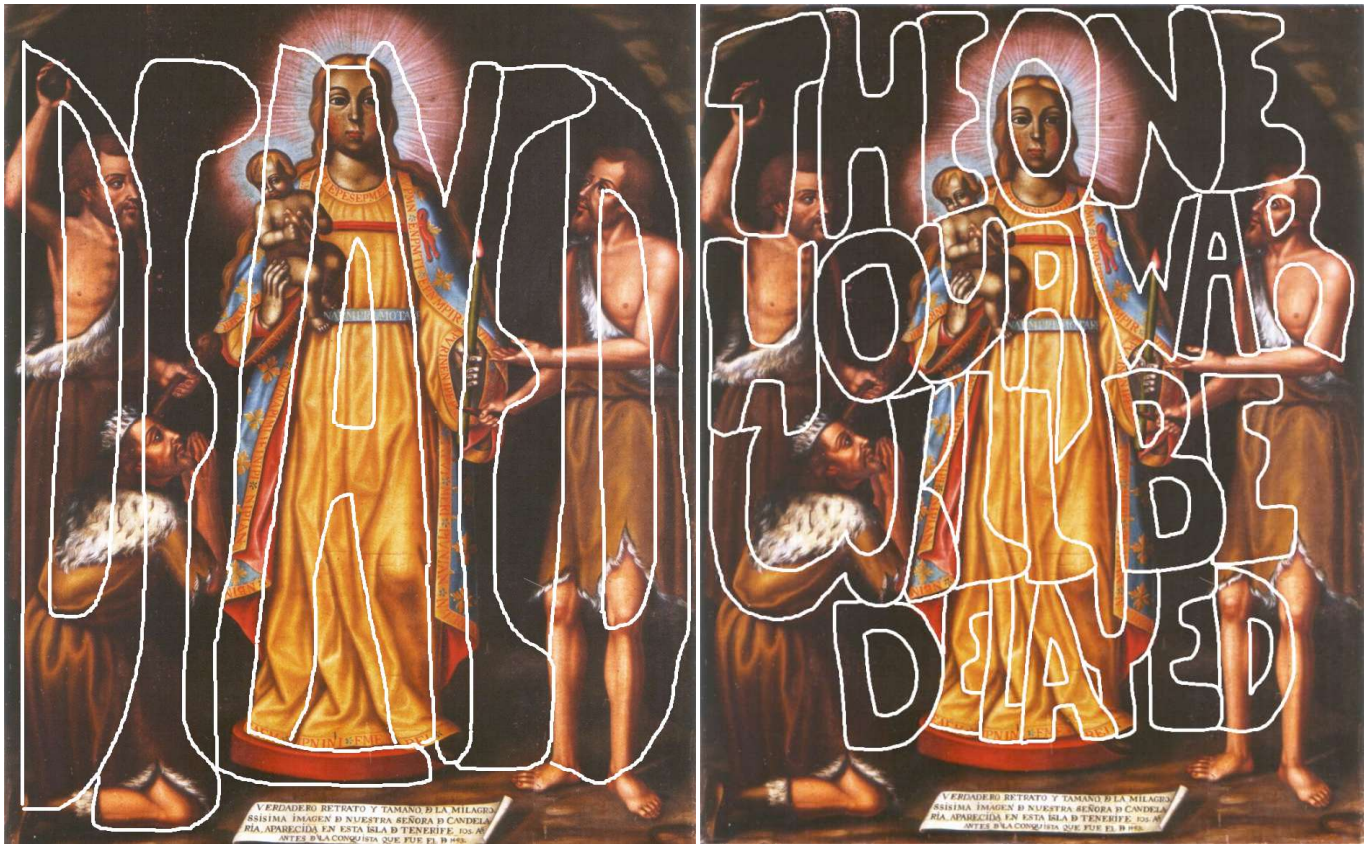
“The One Hour War Was Delayed,” in Nuestra Señora de Guadalupe.



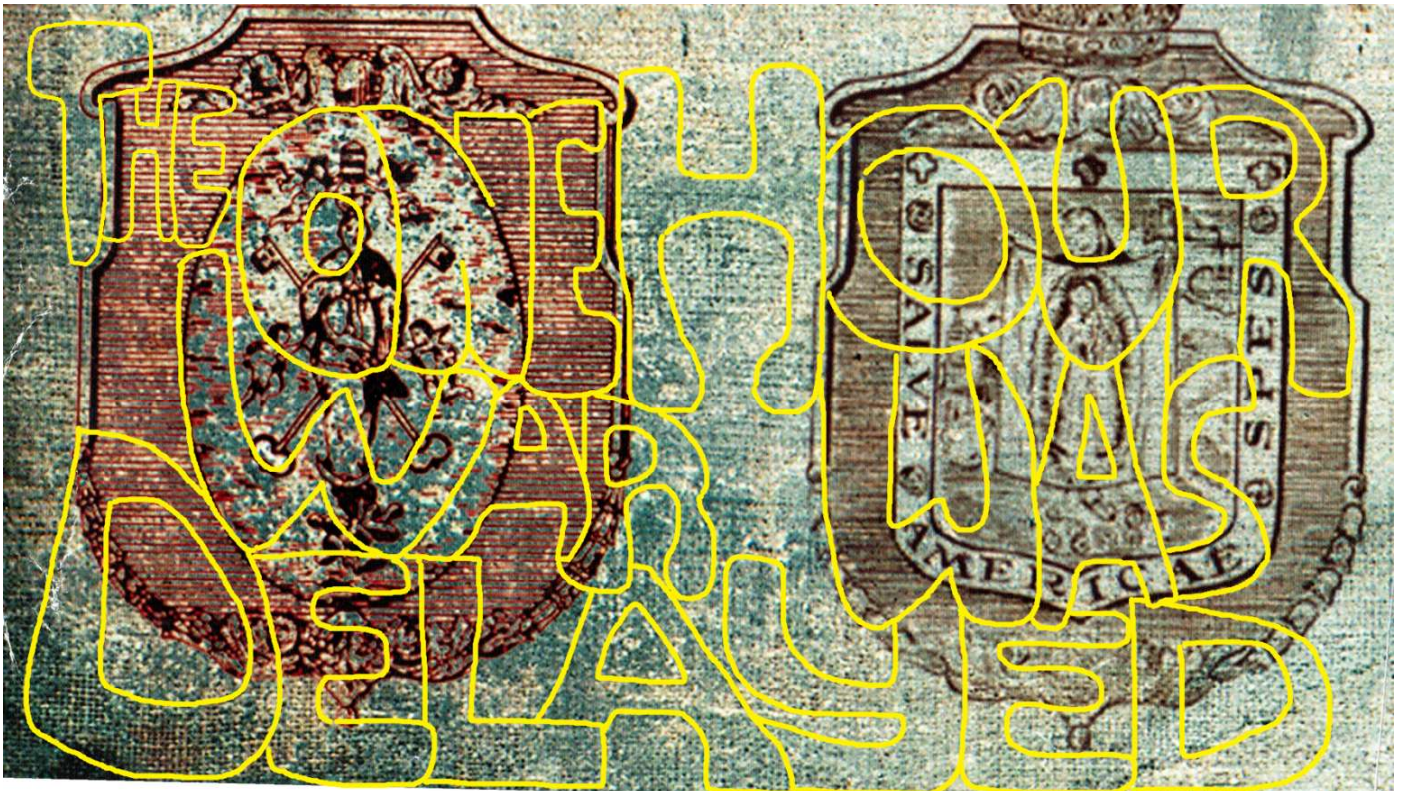
“The One Hour War Was Delayed,” in the Candelaria Likeness



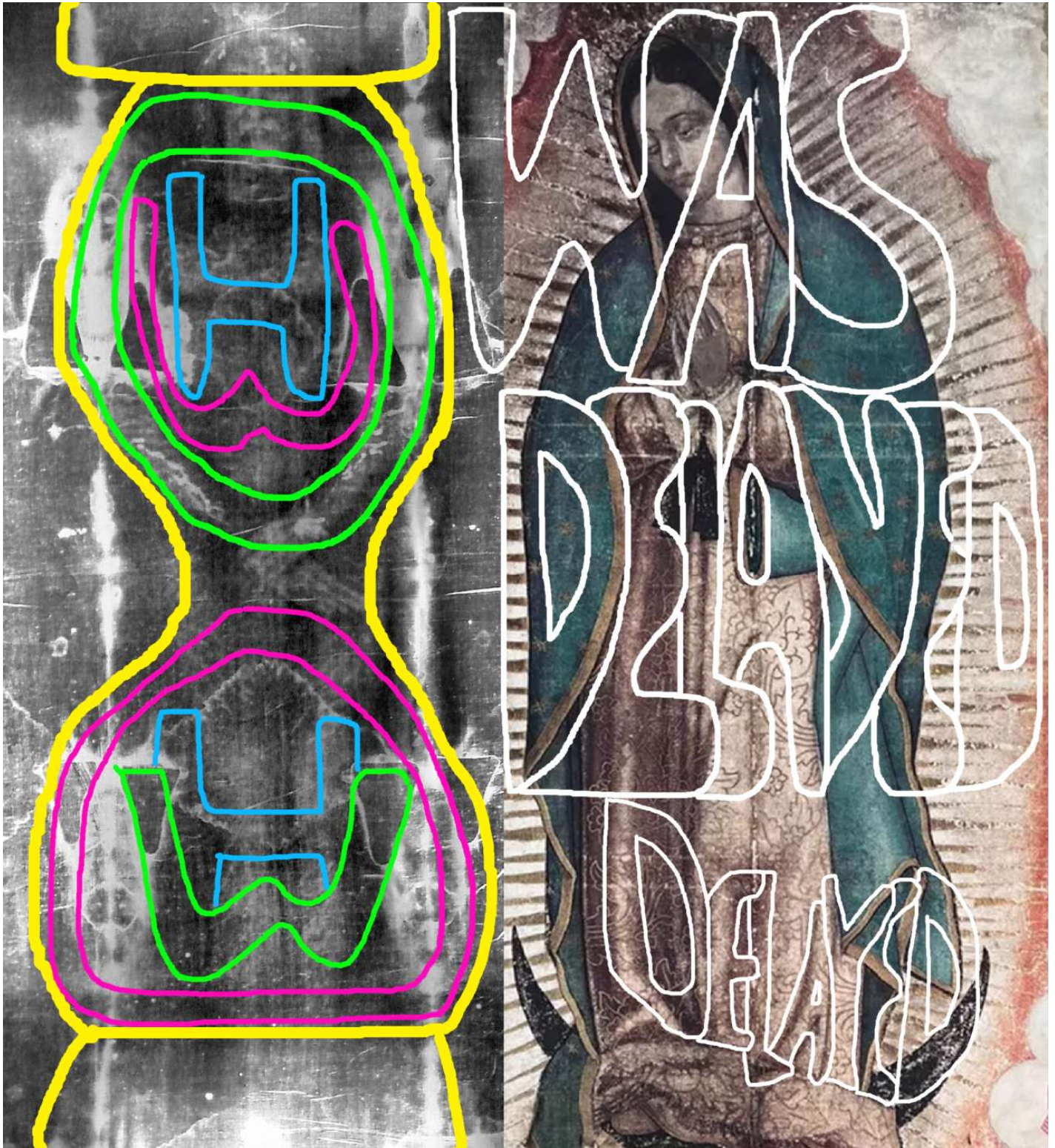
More "Delayed" messages in the Candelaria Likeness.



"The One Hour War Was Delayed," over the surfaces of the Elder and the Juan Diego Badges.

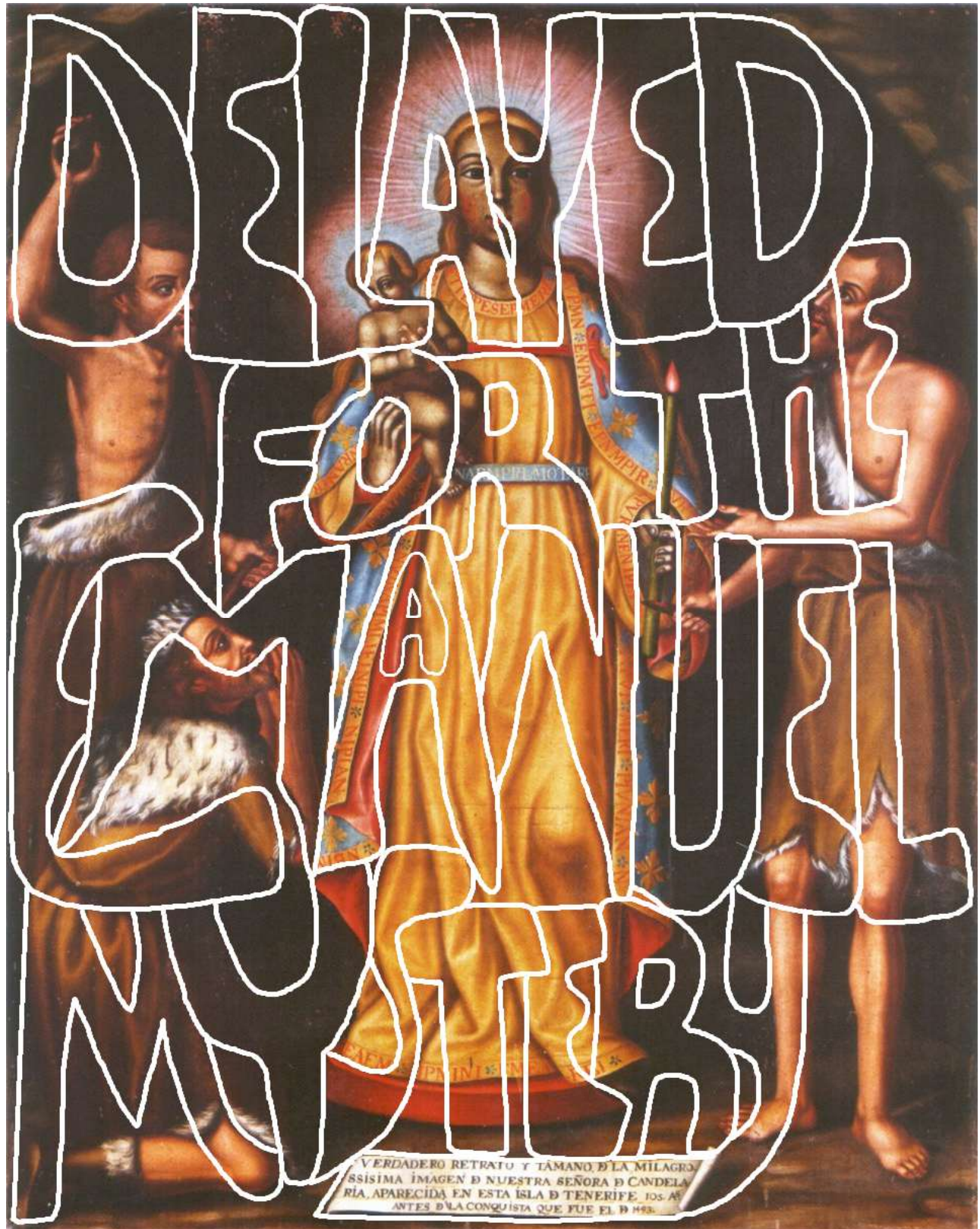


“The One Hour War Was Delayed,” in the Sacred Image Key.
The colorful shape on the right is a One Hour War (OHW) hourglass,
hidden in the Sacred Image Key.



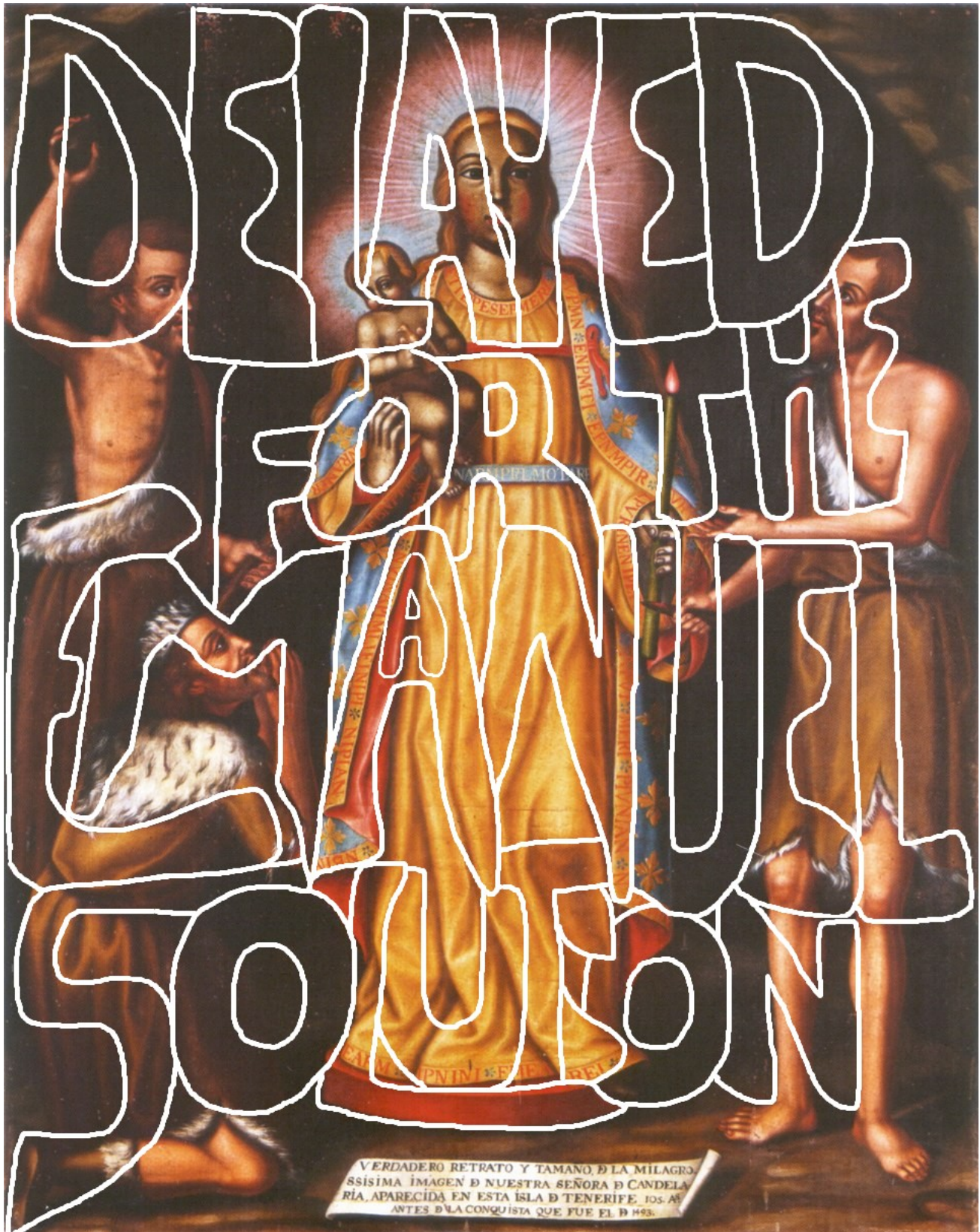
The Candelaria Likeness reveals the OHW was delayed to give me time to solve the Emanuel mystery (which helps expose other crimes Satan and the West committed).

Below: *Delayed for the Emanuel Mystery.*

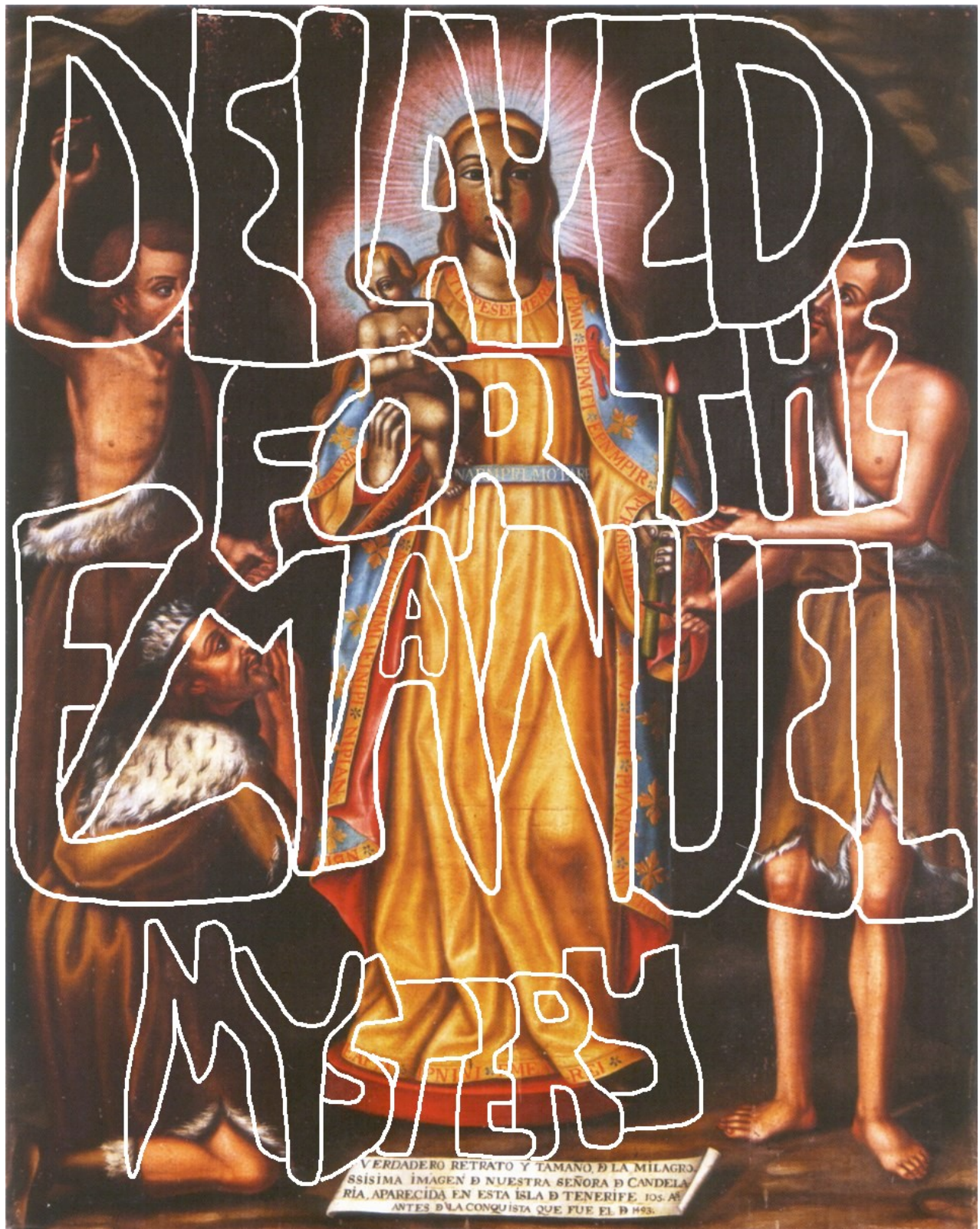


God and Jesus confirmed the OHW was delayed for the Emanuel mystery solution with at least a couple variations of the previous message.

Below: *Delayed for the Emanuel Solution.*



The smaller expression of "Mystery," below, may refer to the mysteries of the prophet Elijah, and John-1. (To read the Emanuel mystery solution, etc, see "Line 5: The Hands That Rocked Time," or "The Life and Crucifixion of Emanuel," or "Revelation 2: The Solutions."



NUESTRA SEÑORA REVEALS THE TIME OF THE ONE HOUR WAR

The Mystery of the 2-Tone Gown: Solved

Nuestra Señora de Guadalupe, today, is badly damaged and mostly fake. 17th and 18th century Western copies now look better than Nuestra. In the image, Guadalupe wears a 2-tone gown: dark tone on the viewer's left, and light tone on the right; representing the night and daylight periods of the same 24-hour day -to reflect that it will be night (dark tone) in the East, but day (light tone) in the West, when the OHW begins

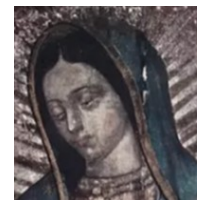


The real Guadalupe Villalpando, ca 1700 Arellano, circa 1691

- The light blue interior of Guadalupe's mantle, turned out, symbolizes the One Hour War date is *different* -changed -delayed. Nuestra Señora identifies **the hour** of the OHW.

Hour of Event (East): The OHW begins when the East begins launching their bombs. Guadalupe reveals that time is **11pm**. 11 is expressed **4** ways:

- (1) by Guadalupe's head at 11 o'clock;
- (2) the two pinkies of Guadalupe's hands are together, but separated from her other fingers, representing 11;
- (3) Guadalupe's hands point up to the 11 o'clock position;
- (4) Guadalupe's collar forms an 11 (and points down to her hands, at 11pm, and to her pinkies -forming an 11).
- *PM* is expressed by the fact Guadalupe's body is turned slightly, toward the dark (PM) side of her gown.
- The *launch hour* ends at 12am; reinforced by black lace arrows under Guadalupe's hands, like clock hands, pointing up to midnight.
- Guadalupe's 10 fingers, closed in prayer, may represent 10am, US West Coast time, when the OHW closes.



The Hour of the One Hour War (US/West):

The East's bombs will impact the US from about **9am to 10am, PST (US West Coast time)**, or **12pm to 1pm, EST (US East Coast time)**. [Bombs will likely also impact some other Western nations and their allies in this hour. Research to learn when this critical hour is in relation to where you live, or where you will be at the time of the OHW.]

Please try to be 50 to 100 miles from any large to mid-size city in the United States, Western Europe, Israel or Japan during this hour.