

The  
**Elder**  
Badge



Steven

**Kenyatta**

Briggs

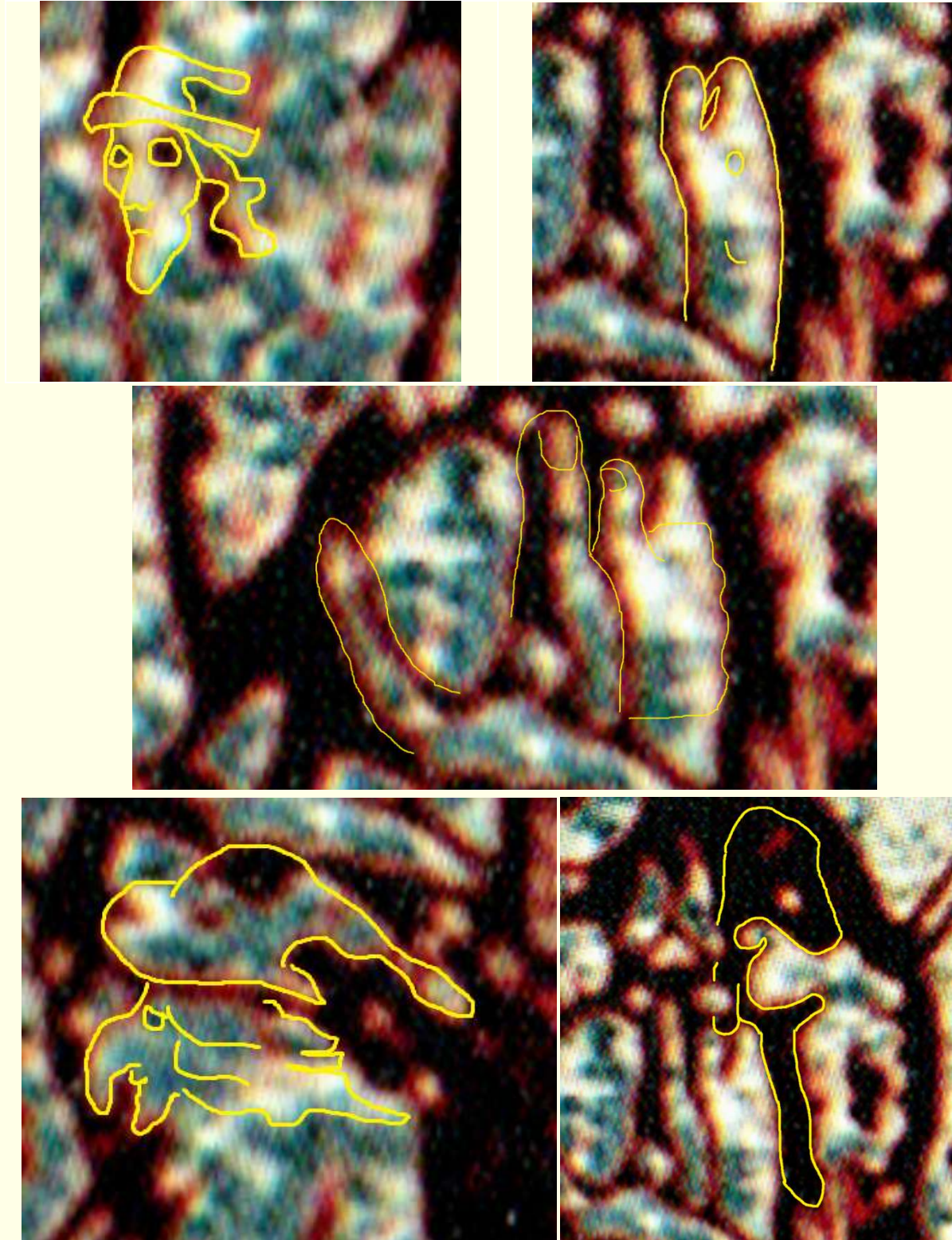


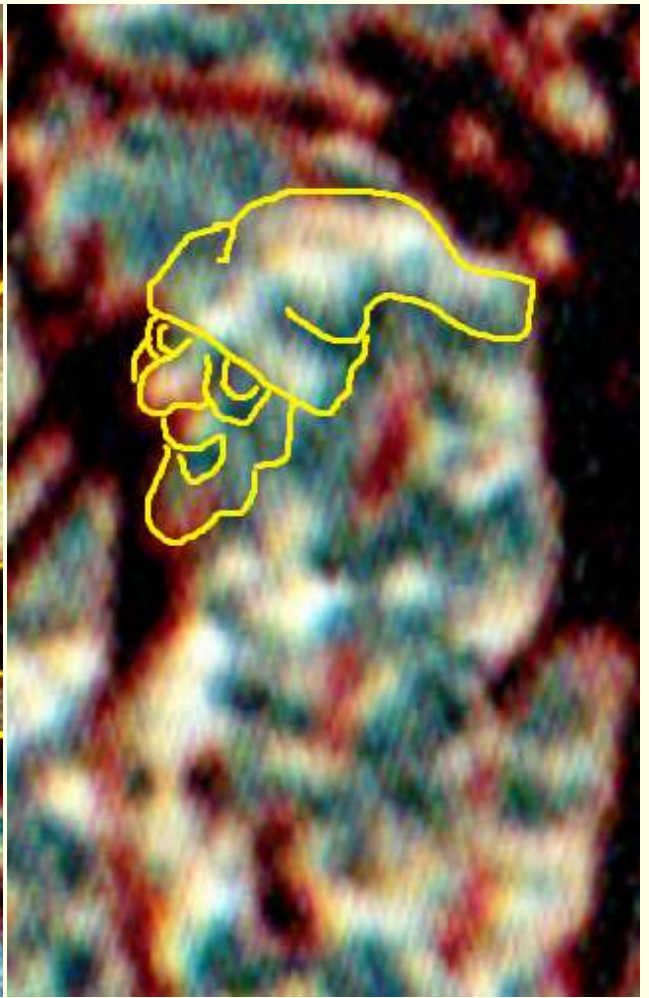
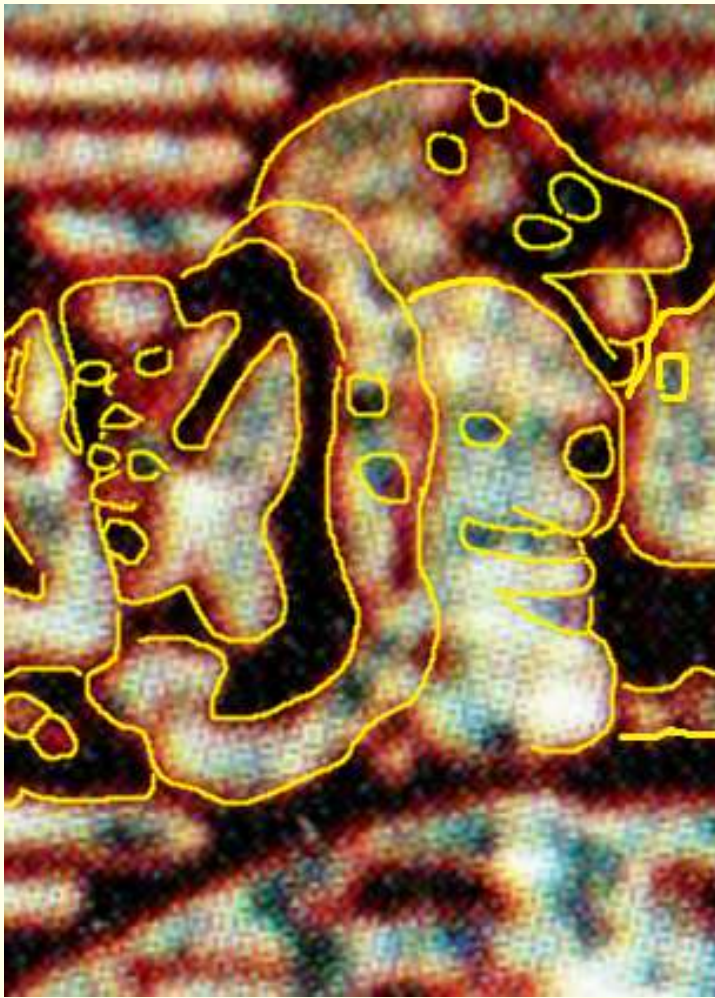


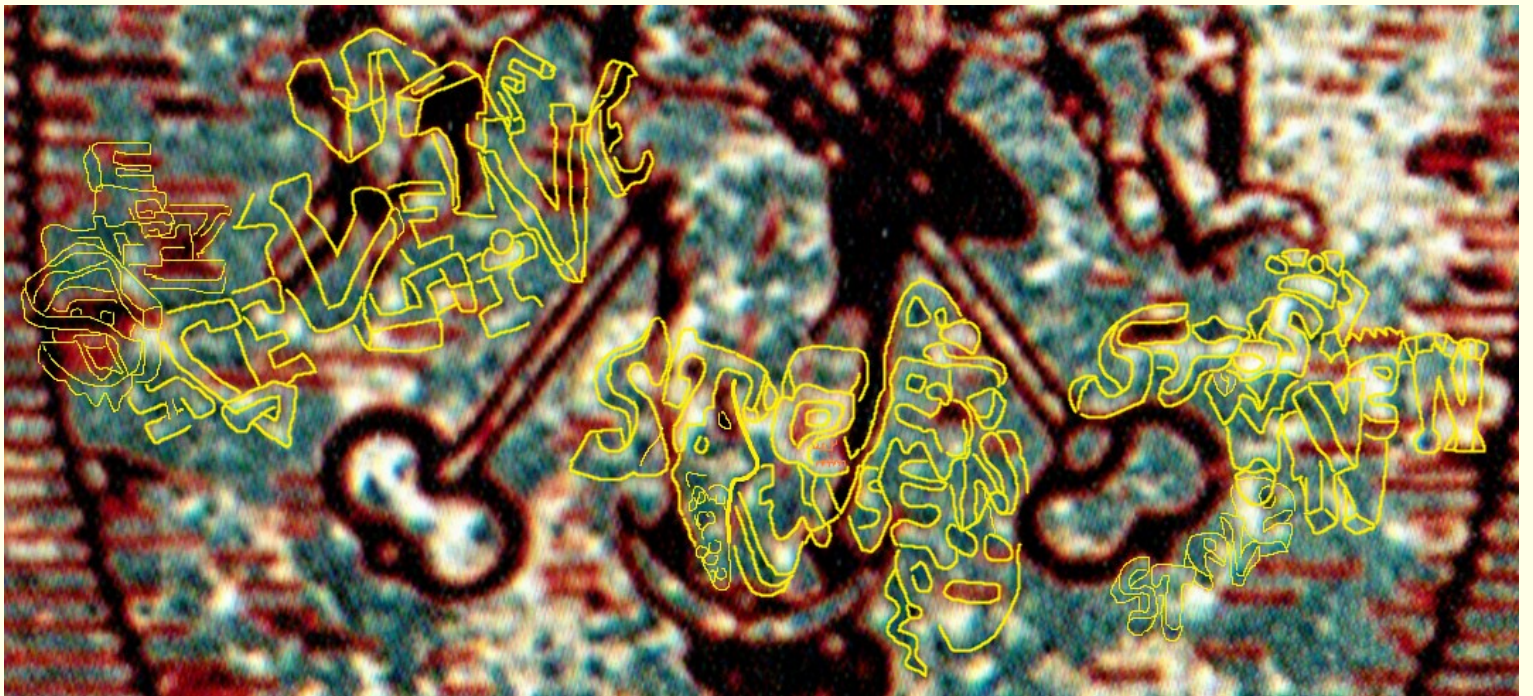
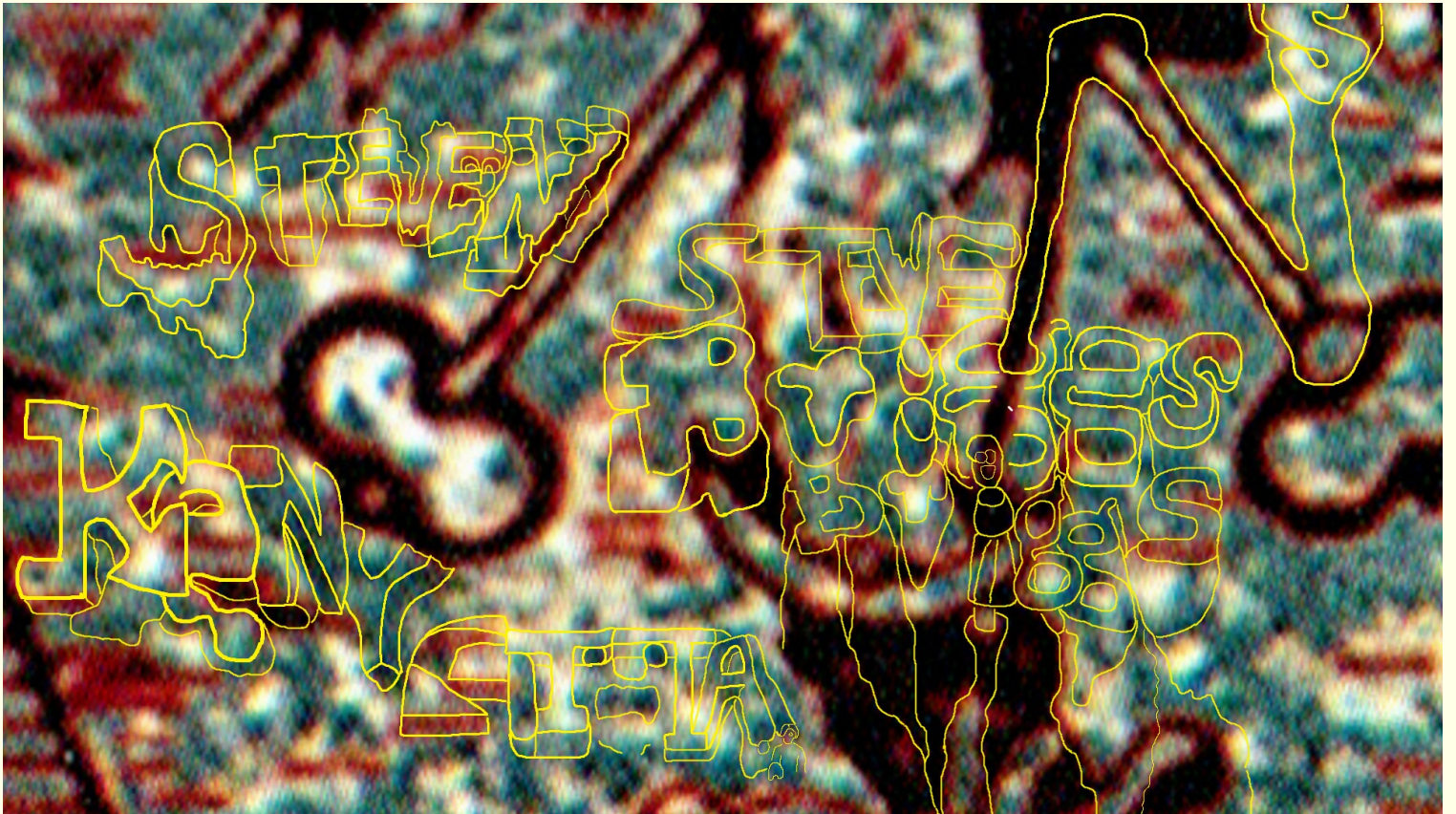
This is the *Elder Badge*; 1 of 2 such badges attached to the lower left corner of *Nuestra Señora de Guadalupe*. The badge is only 4 inches high by 3 inches wide (approx 10cm x 7.5cm).

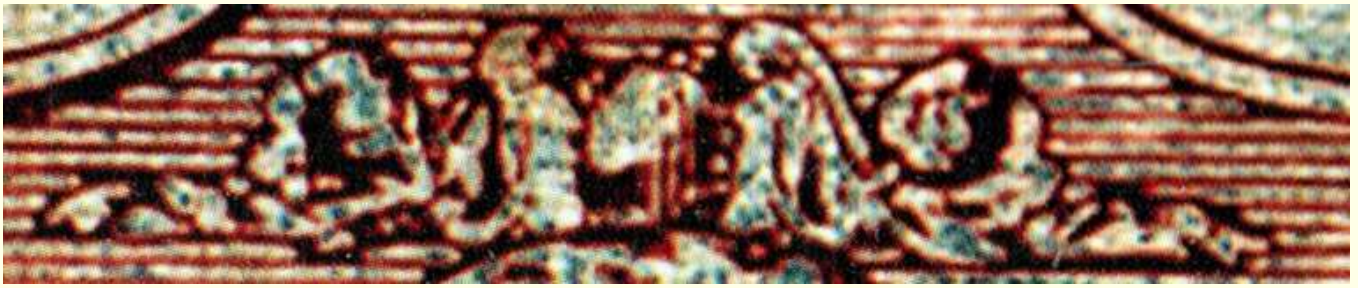
The badges were first photographed in 2000 –but not examined, enlarged, or explained, until I did so, in *Killing Guadalupe*, March 2025. In fact, no distinguishable photos of the badges were published online or in print, until I did so. To learn the full purpose and history of the Elder Badge, read *Killing Guadalupe* (particularly chapter 4 –also chapter 11).

Some of the images in this booklet were published in *Killing Guadalupe*; some are new. I've outlined many of the images; otherwise they are unaltered –the work of God and Jesus. To learn more about the Elder Badge, read *Steve's Top-Secret Notebook* or *Killing Guadalupe*.

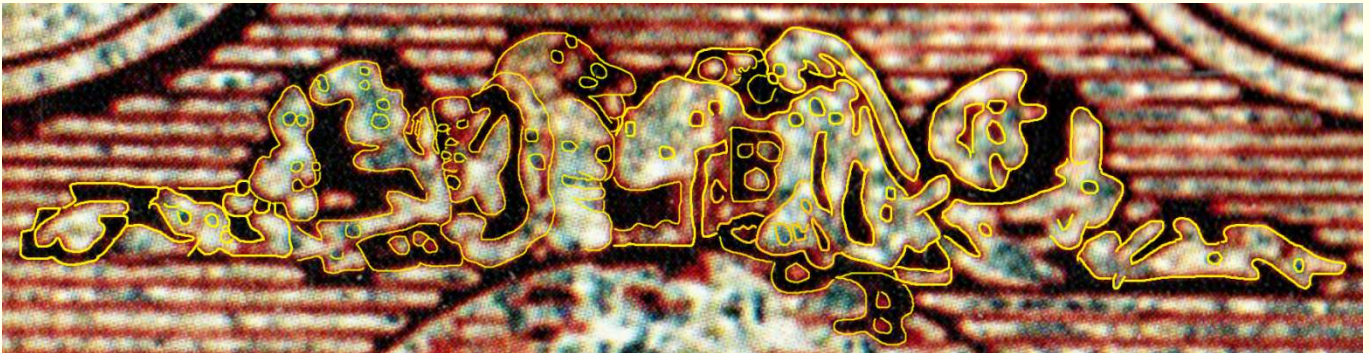




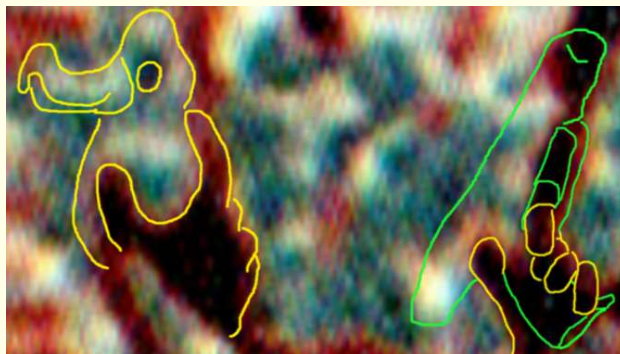


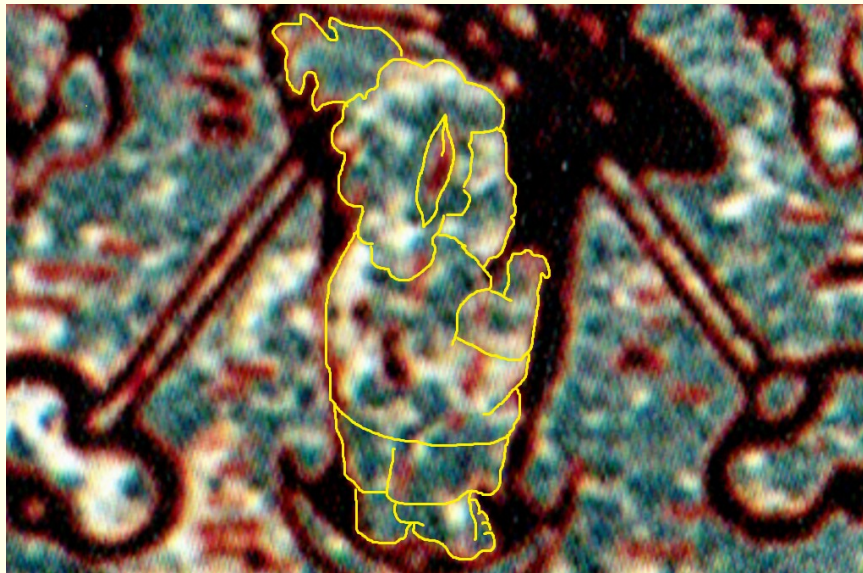


This is the mantle of the Elder Badge. It Represents Heaven.



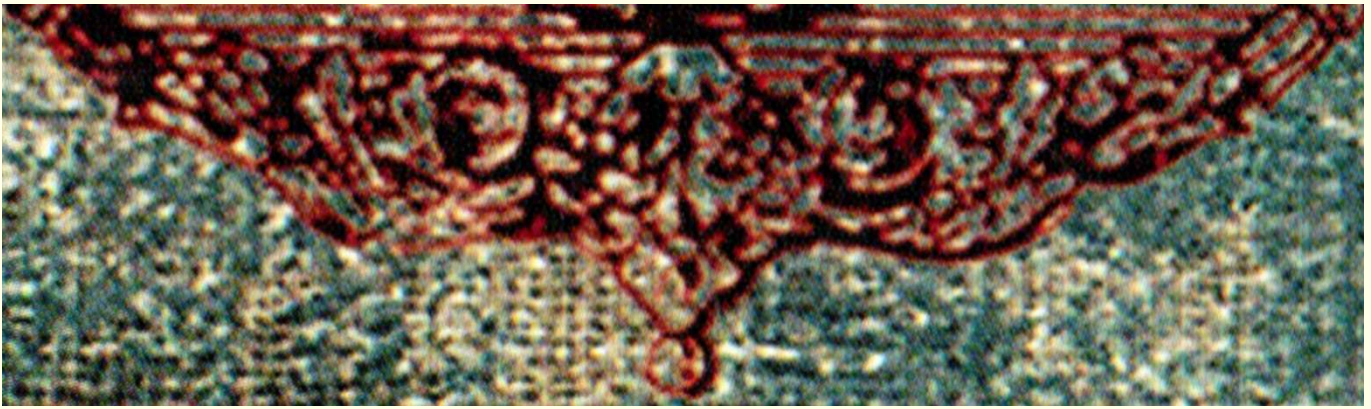
The unsettling images in the mantle reinforce the information in the base.



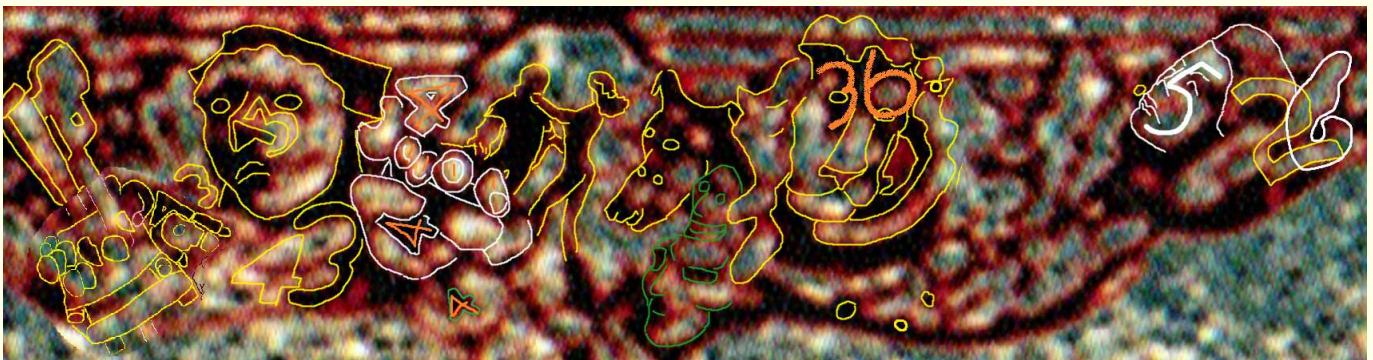


*Butterfly Driver* –the title of my most well known screenplay.

The **base** of the Elder Badge is explored on the following pages.  
Some of that information may be unsettling.

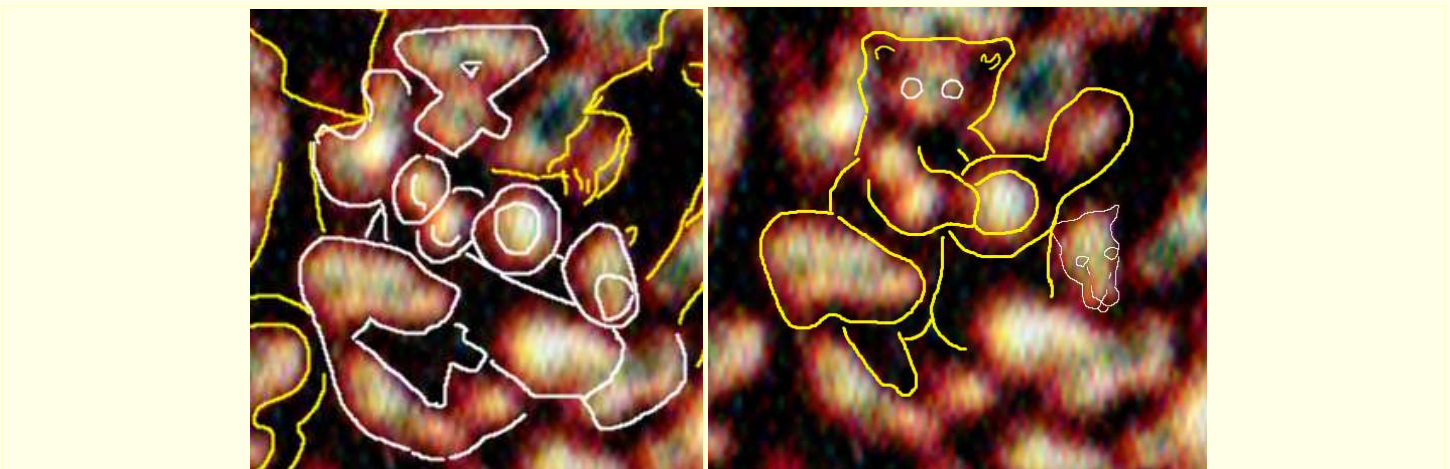


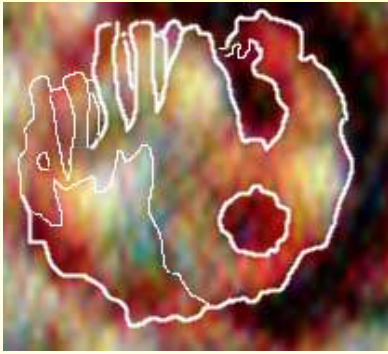
The base of the Elder Badge represents Gehenna (AKA “Hell”), and contains information related to my work on Revelation’s *Unforgivable Crimes*, and the afterlife fate of some family members and acquaintances. But **not** every soul featured in the base is bound for Gehenna.



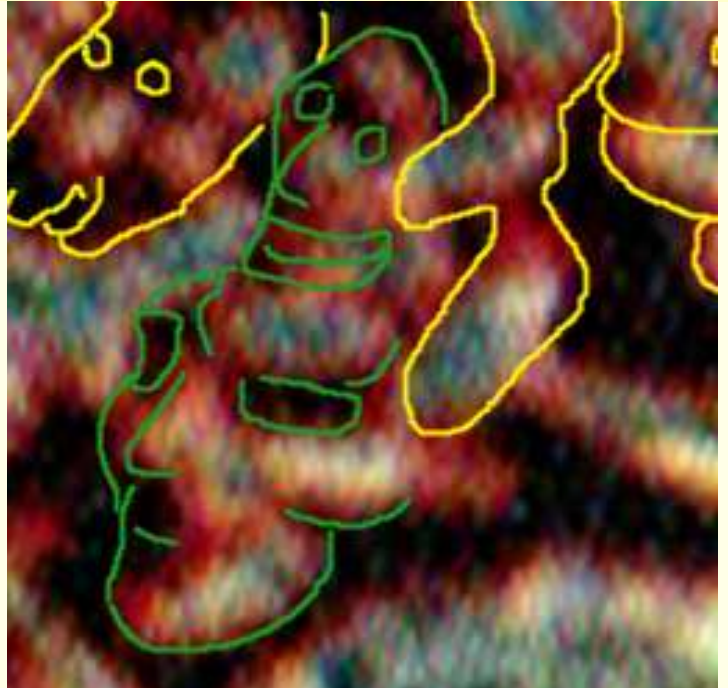
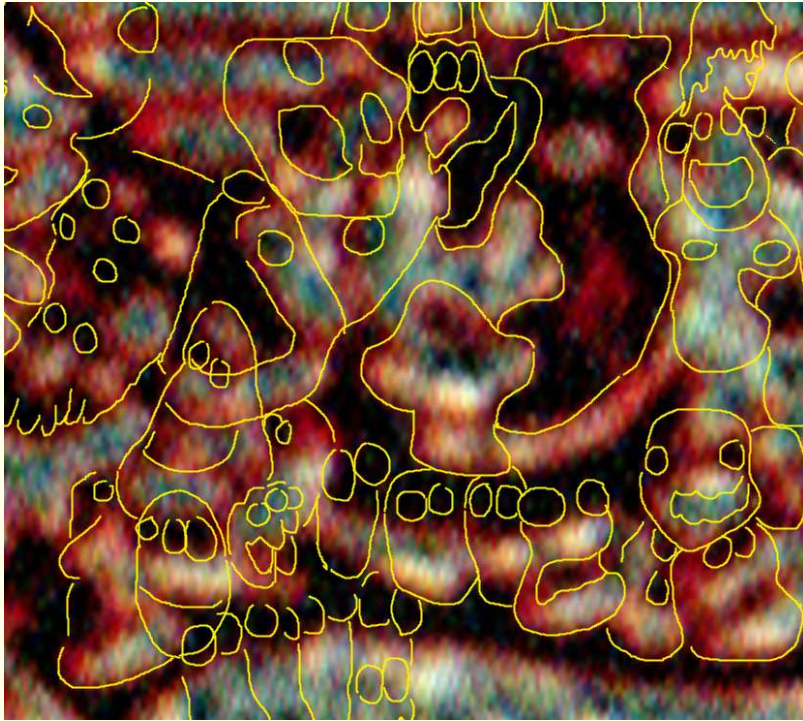
The image above is a compound image, created from a few images. The numbers 43, 44, 36 pertain to the Unforgivable Crimes; 5 and 26 pertain to the *Publication Date* of the rescheduled *One Hour War* (see *Revelation 2: The Solutions*, for more about the Publication Date).

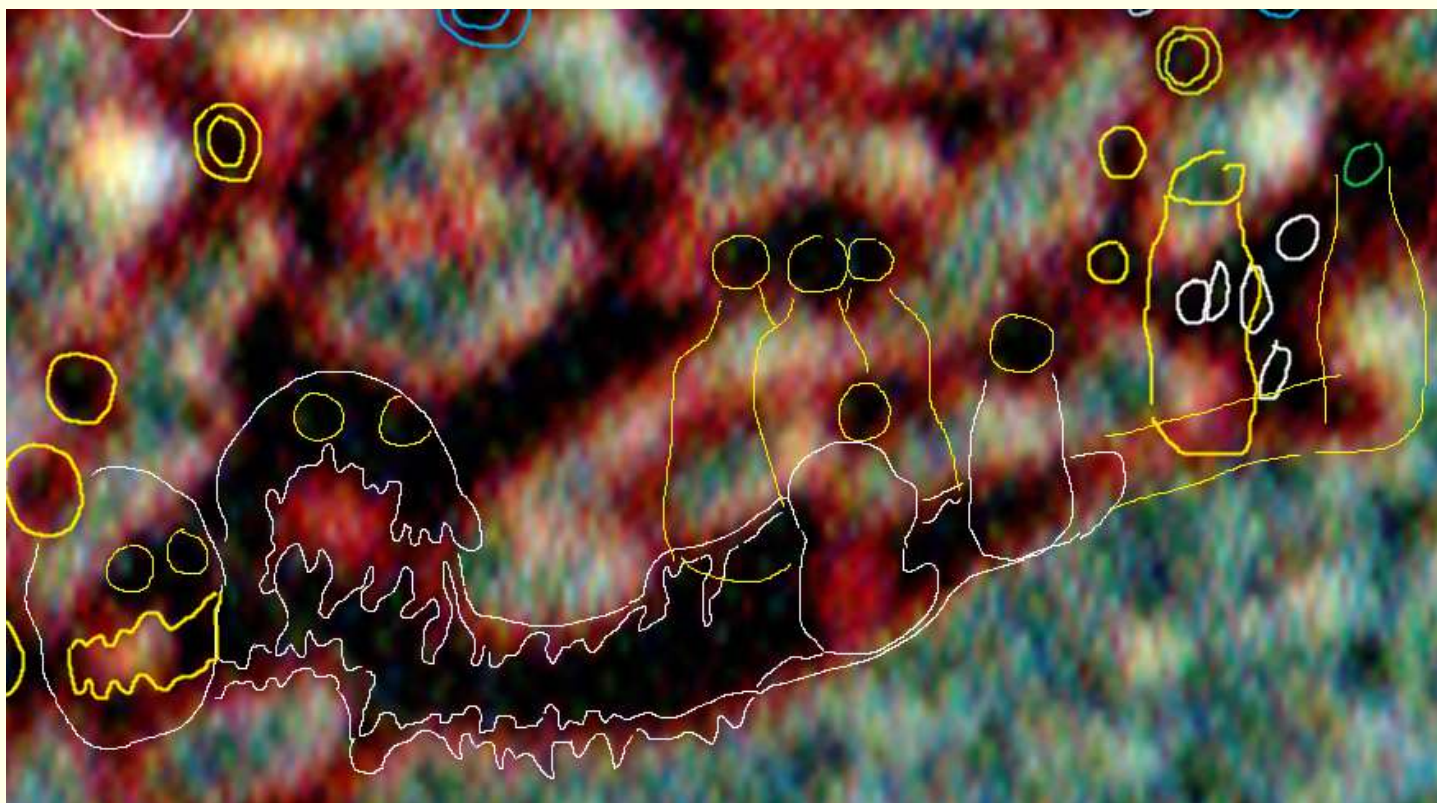
Amazingly, both images below are found in the same location.

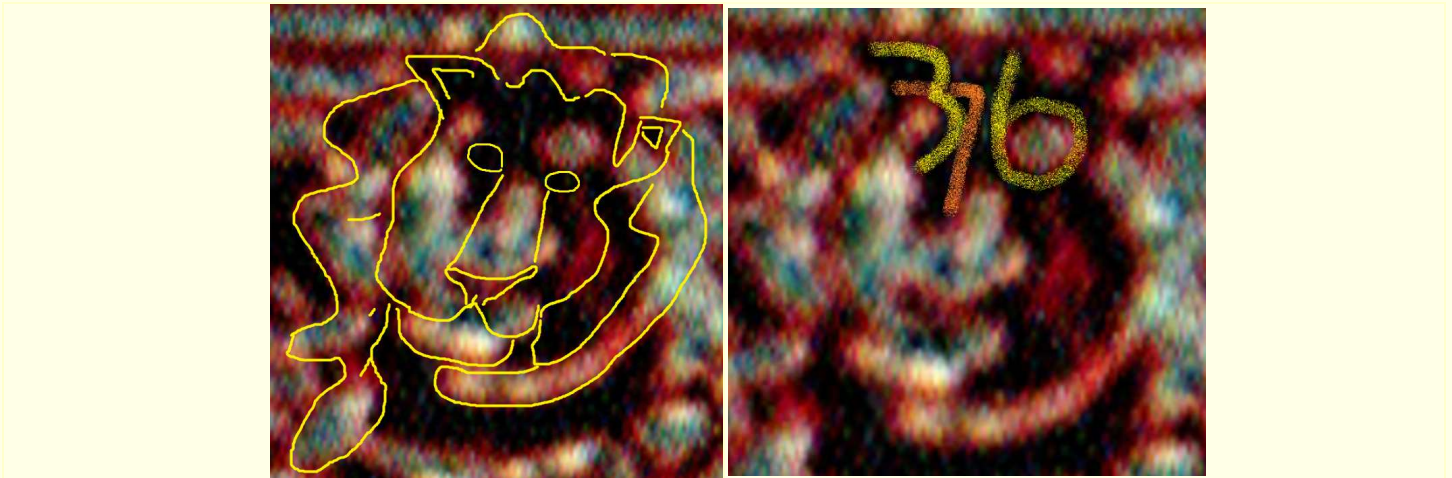




The spherical ornament, at the lower tip of the base, with many mouths (right), is only an 1/8<sup>th</sup> of an inch across.



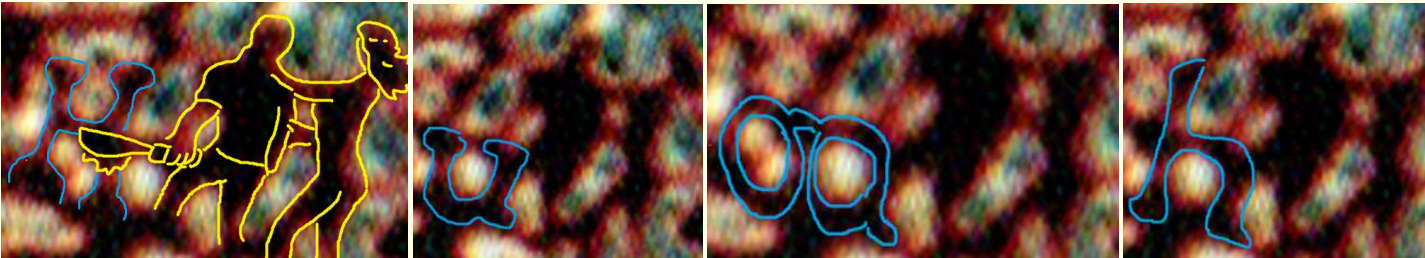
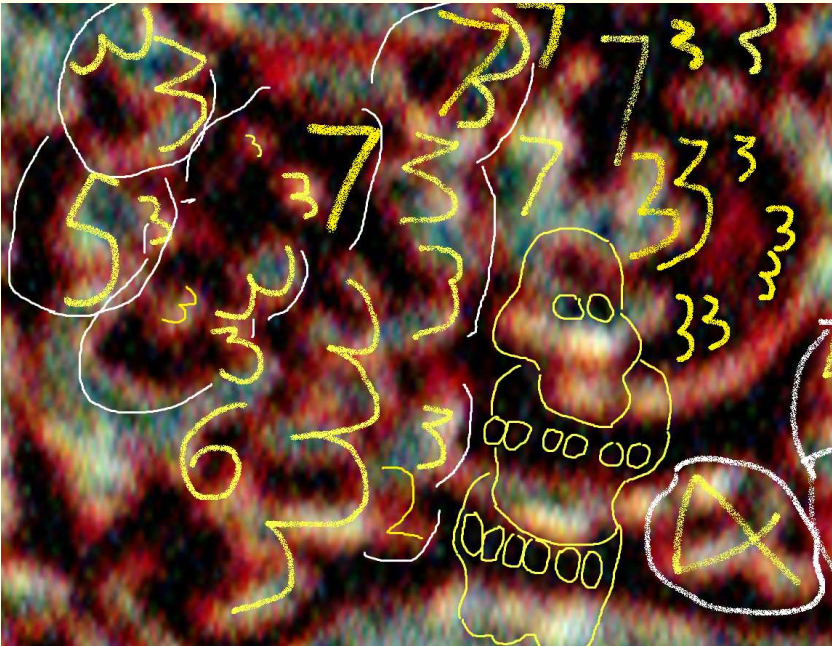


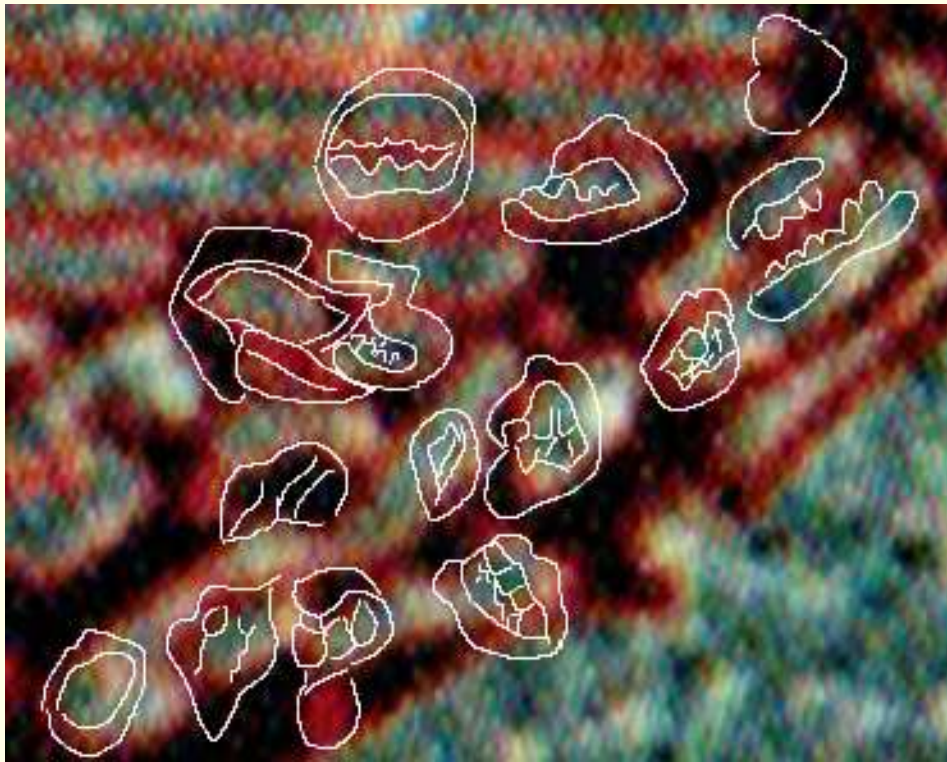


The numbers on the lion, above, right, refer to the 36 Mark Crimes, and to the United States: 1976.

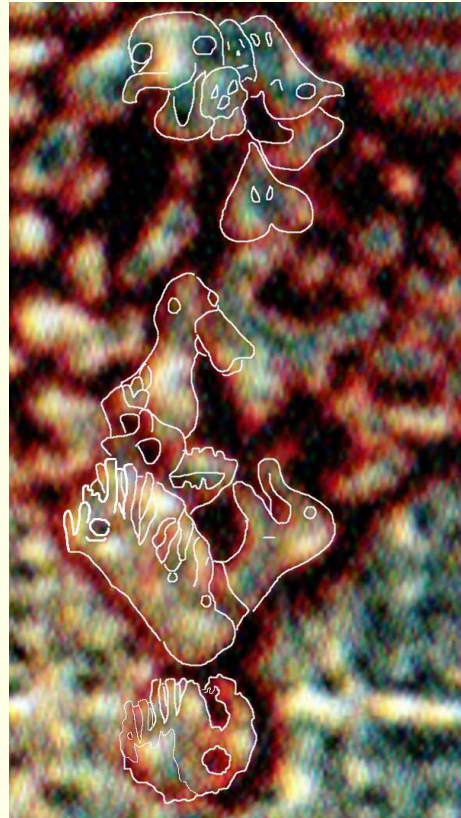
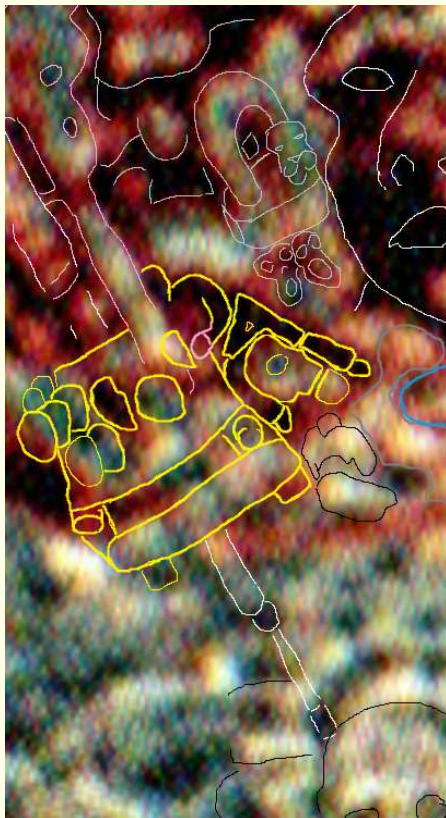
The numbers below usually reflect the number of bribes certain family members and acquaintances accepted. In some cases, the numbers reflect the number of *other* people that person bribed.

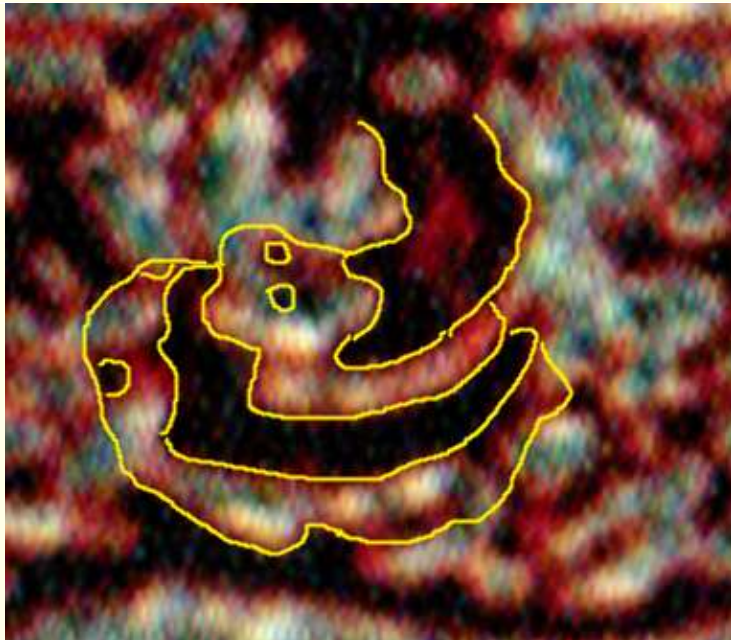
Bribery is a big part of the Mark Crimes.





The mouths, hidden in the far right of the base, represent my parents, grandparents, grand-uncles and aunts, and great-grandparents. These souls establish a family tree, and are not necessarily in Gehenna.



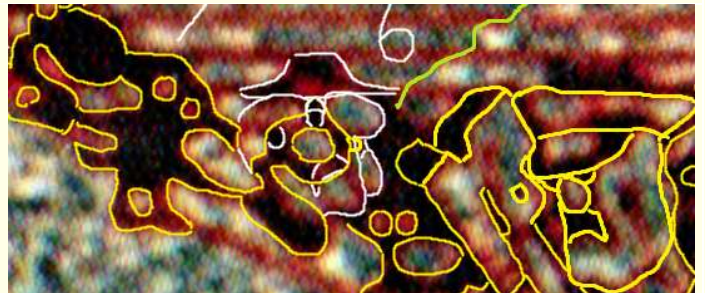


The small head, left, represents John W Gardner –the Beast.

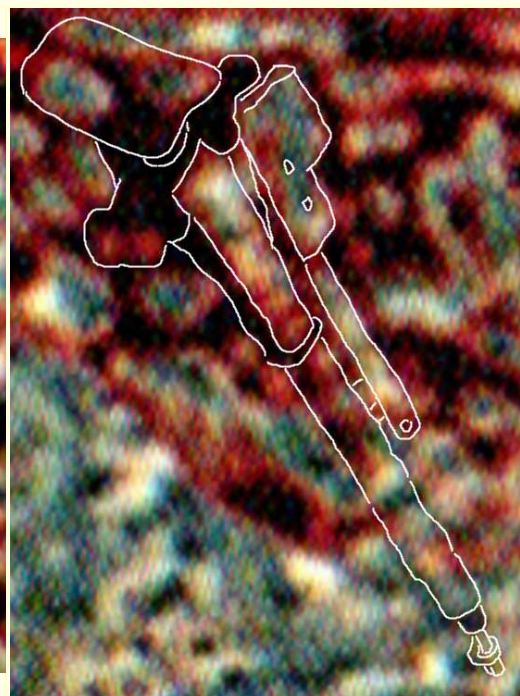
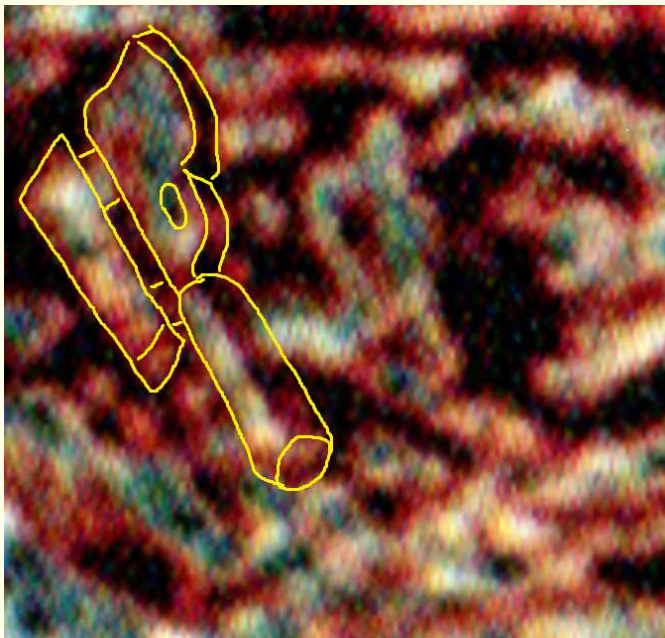
The larger head represents Satan.

Gardner coming out of Satan's mouth says Gardner was Satan's voice –able to receive messages from Satan and execute all of his orders. The image also says all of the souls Gardner consumed also fed Satan.

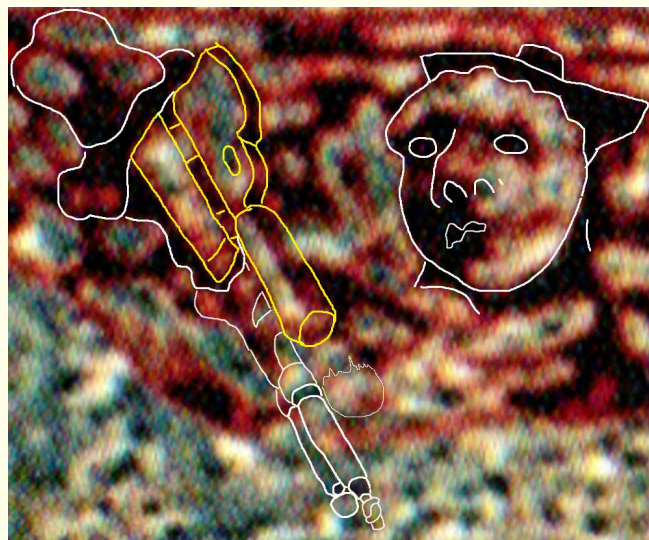
The image to the right represents Gardner's corruption of US police departments, newspapers and all US and Western institutions.



The gun (with night light) and the syringe, below.



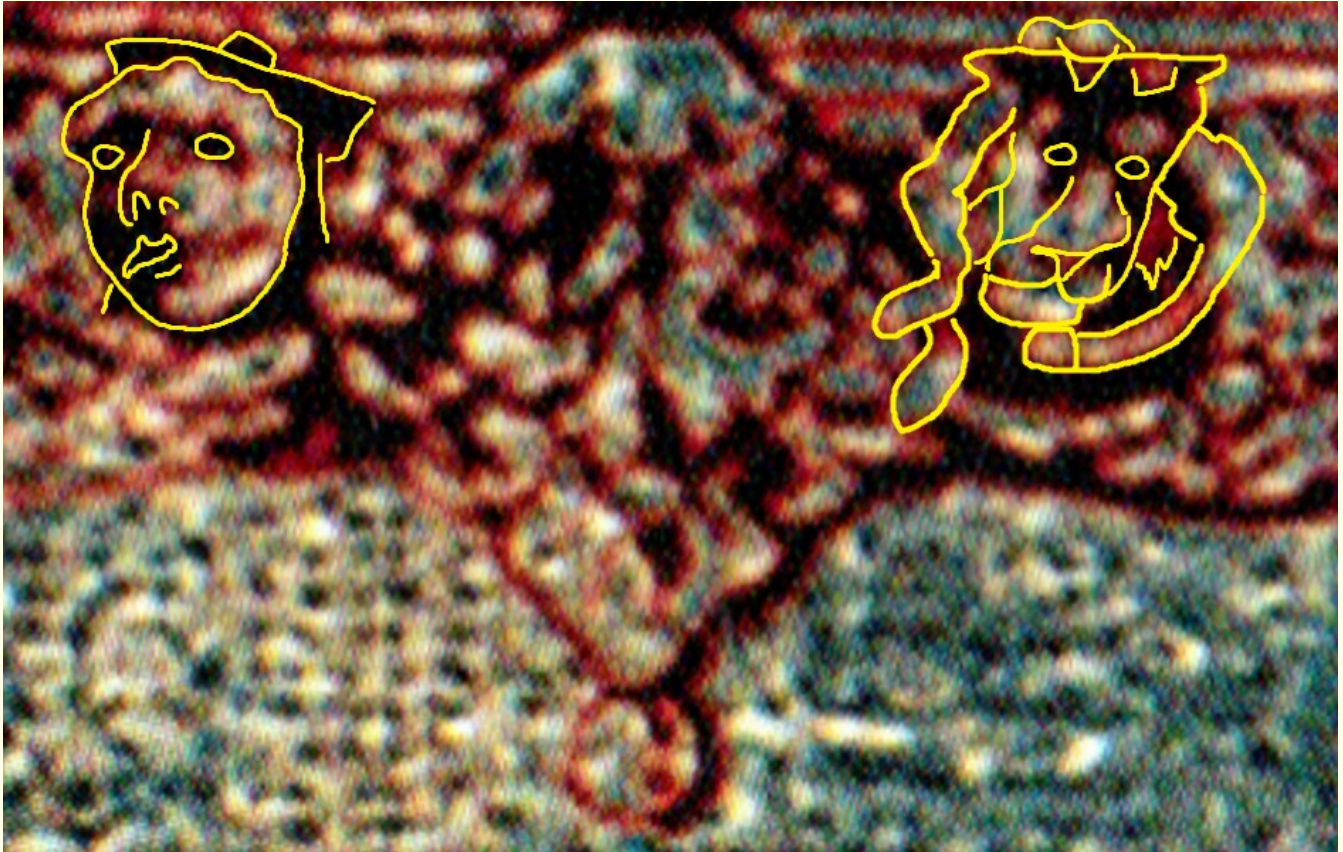
I believe the image arrangement to the right, the man proximate to the gun with night-sight –combined with the syringe, were included in the Elder Badge to confirm that my stepdad, Dennis Wilson, committed the first two Zodiac murders (the first US murders committed with a gun with an electric night sight) and two of the Santa Rosa hitchhiker murders –one of which was committed by syringe injection of strychnine.



The tracing below reveals the delayed One Hour War (OHW) date. The OHW was delayed to give me time to solve the Emanuel mystery. You can read the Emanuel mystery solution, and other important solutions, in *Line 5: The Hands That Rocked Time* (L5THTRT), at [www.TheZoneResistance.com](http://www.TheZoneResistance.com).



The delayed OHW date is **June 19<sup>th</sup>. 2026** (on the Gregorian calendar, currently used in the US and many nations); or June 6<sup>th</sup>, 2026 (on the Julian); or 4724, 5<sup>th</sup> Month 5 (on th Yin calendar); at **9:00-10:00 AM, US West Coast Time**, or **12:00 PM (noon) to 1:00 PM, US East Coast Time**. (More at [www.TheZoneResistance.com](http://www.TheZoneResistance.com).)



The most prominent features in the base are *the man* and the lion. Personally, *the man* represents my stepfather and the lion represents my younger sister.

Broadly, *the man* represents the West and corruption of all Western institutions, including family and social values.

And now that a new Pope is in the Vatican, Pope Leon, the first American Pope, I suspect the lion -Leo- may represent corruption of the Catholic Church.

... Babylon is fallen, is fallen!  
And all of the carved images of her gods  
He has broken to the ground.

-Isaiah 21:9

But the base of the Elder Badge has a greater purpose still...

## The 10 Levels of Gehenna (Hell)



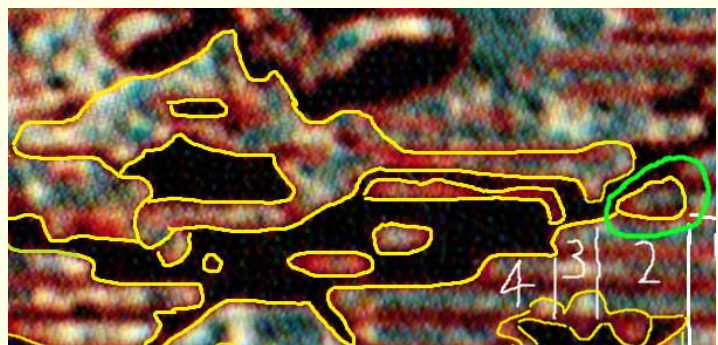
The base of the Elder Badge is a sin/crime and punishment graph, to give misguided humans an idea of what to expect in the afterlife.

At the top of the chart is Satan, who presides over Gehenna.

The Elder Badge served as a *confirmation key* for the *Publication Date* of *God's One Hour War*; double-digit *decades* icons were displayed on the left, the smaller single-digit year icons (and the month and day) were displayed on the right. From this, the punishment severity and location are presented right to left, bad to worst. Although everywhere in Gehenna is uncomfortable, the pain, heat and "worms" (Mark 9:44) likely increase(s) according to the severity of one's crimes –along with the length of one's stay.

In the image below, notice a small *chunk* of Satan, circled in green, is severed, separate, on the other side of a boundary. This section represents Sheol (AKA *Death* –the place). I believe Satan has remote influence in Sheol, but is not physically there.

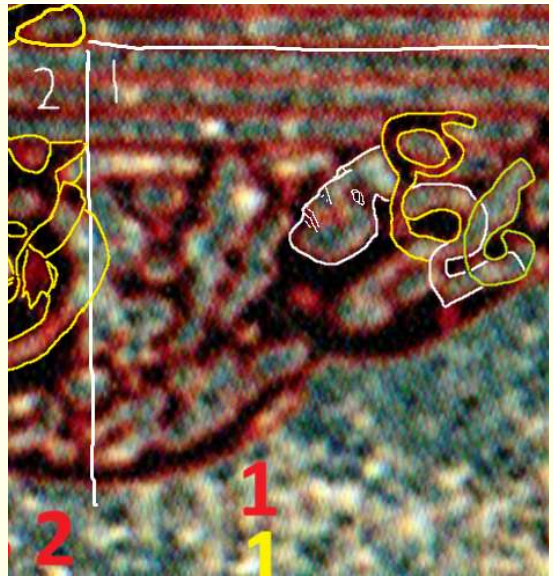
Above, notice the separated *chunk* of Satan is above the viewer's right side of the lion, or level #2. From this, I believe level #1 and #2 offenders are sent to Sheol (described as *dark and gloomy* –worse than being dead, but better than being in Gehenna).



- See *Steve's Top-Secret Notebook*, for much more accurate, current and detailed information about Gehenna and the Elder Badge.

I assume people can be sentenced to Sheol for various offenses (and God's and Jesus' overall assessment of their life), but in this model, the crimes represented in area #1 and #2 are *offering or accepting lower-level bribes* (where the crime is smaller, and only one person, or very few people, are impacted).

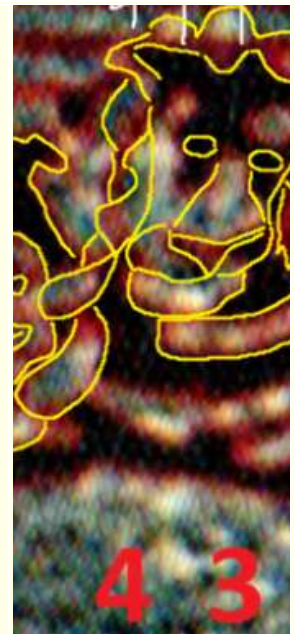
Logically, offering a bribe is worse than accepting the bribe, because the acceptor does not necessarily need to know the bribers' motives.



Knowingly offering or accepting a bribe against family or a friend substantially increases the severity of the crime.

Area #3 and #4 are for criminals who offer or accept larger, more malicious bribes -including bribes against their family and friends- and may involve multiple *victims*.

These offenders go to Gehenna (Hell).

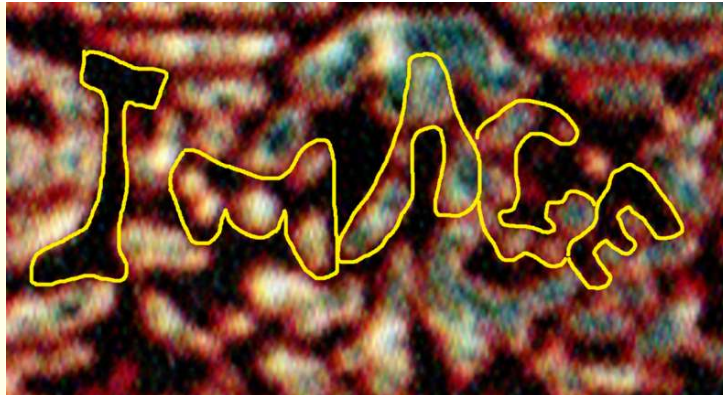
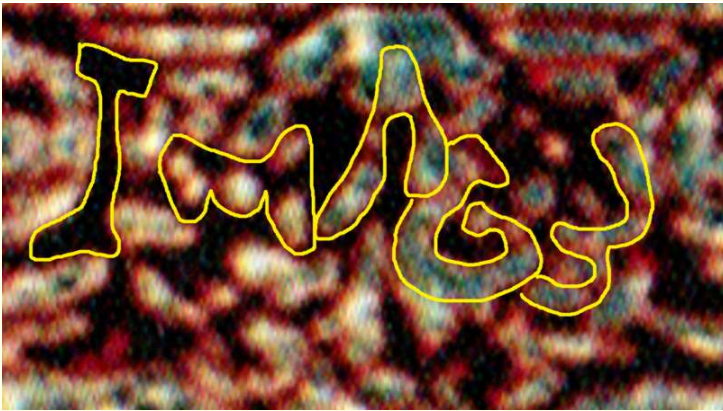
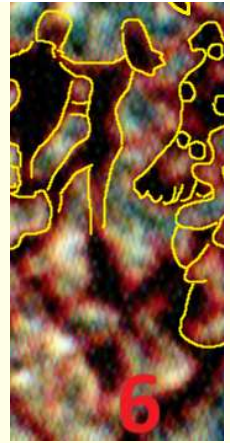


Area #5 is for crimes like (1) higher level intellectual property theft, (2) non-violent organized crime, (3) knowingly publishing false and damaging information (especially in furtherance of another crime or related scheme).



Area #6 is for at least two major groups of crimes:

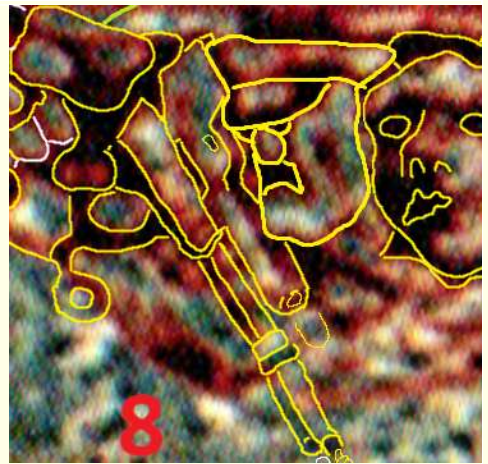
- (1) **Extreme Family Violations**, such as a parent willfully acting to turn their child/children against the other parent (or a friend or another family member endeavoring to do so).
- (2) **Image (and Mark) Violations.** *Image* crimes occur through visual technologies, like TVs and internet connected devices. The first clue that area #6 is for Image crimes is the screen-like illumination in the center of the base. But I think I saw other clues...



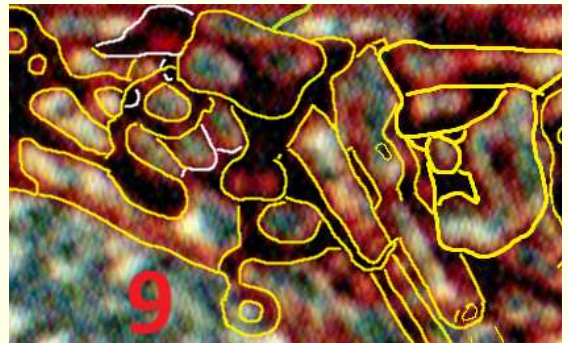
Area #7 is for murderers –people who kill without justification.



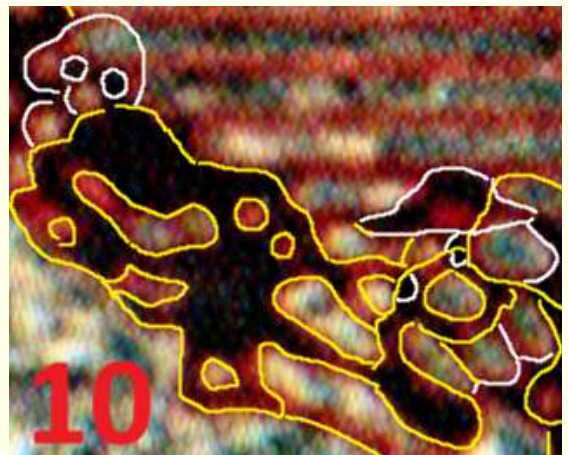
Area #8 is for murderers who kill in unusually painful, terrible ways –and murderers who are in positions of trust, with duties to protect and uphold the law –such as police officers.



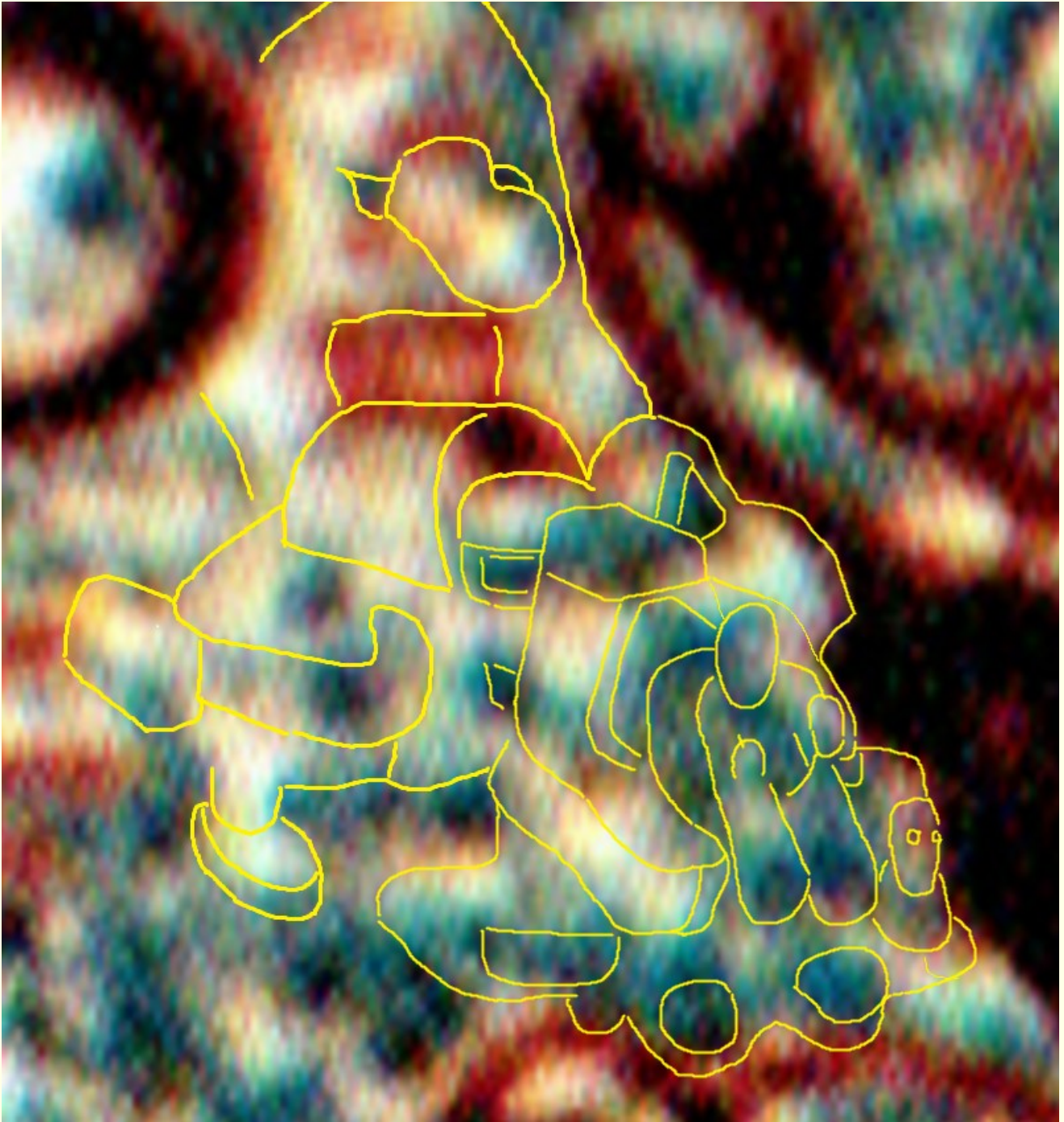
Area #9 is for people who corrupt a nation's institutions (usually through bribery), so police and judges become criminals or crime facilitators. Area #9 is also for violent, large-scale organized crime participants, who murder and cause others to live in fear.



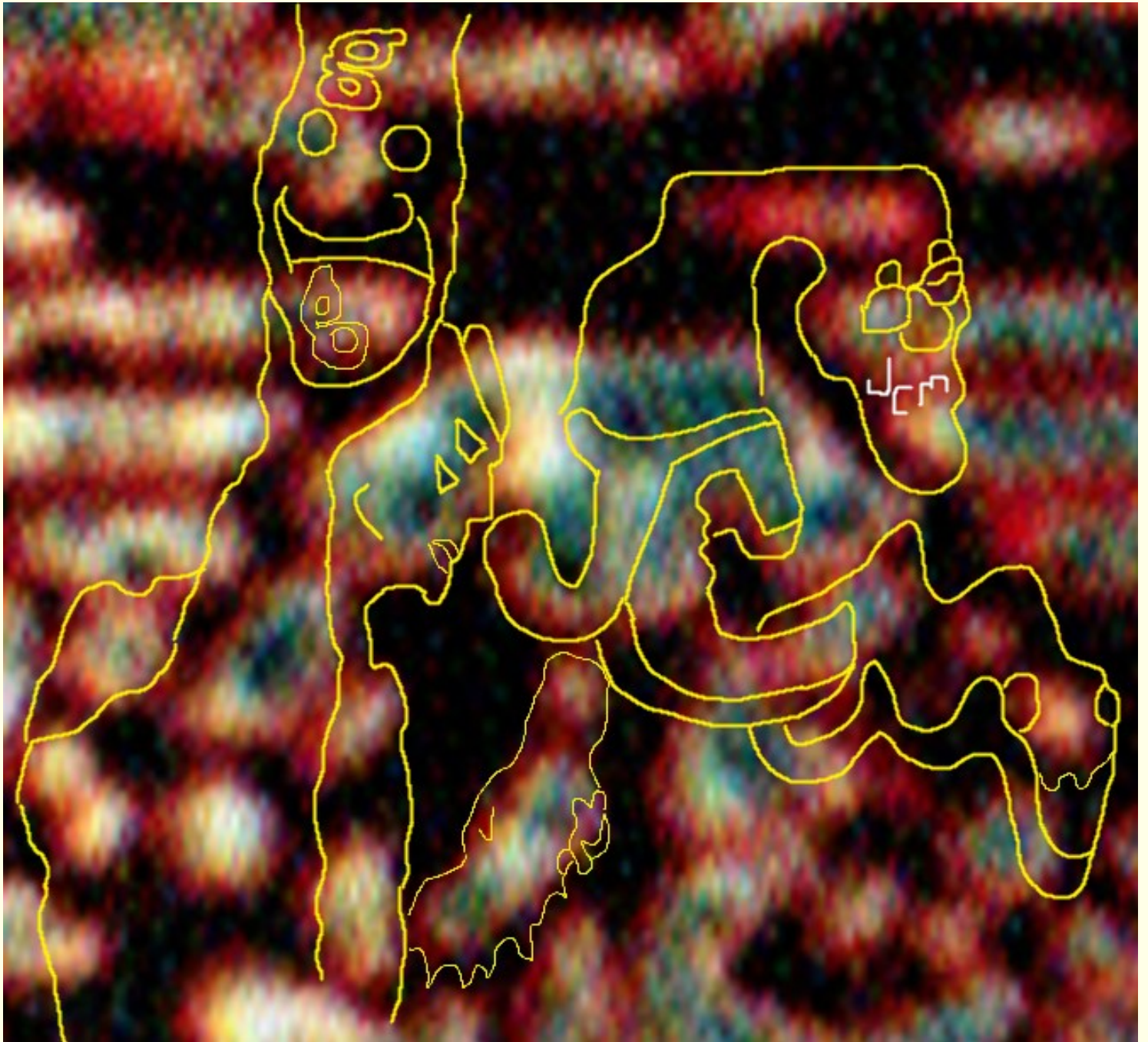
And area #10... There is no crime worse than killing –or substantially harming- a child.

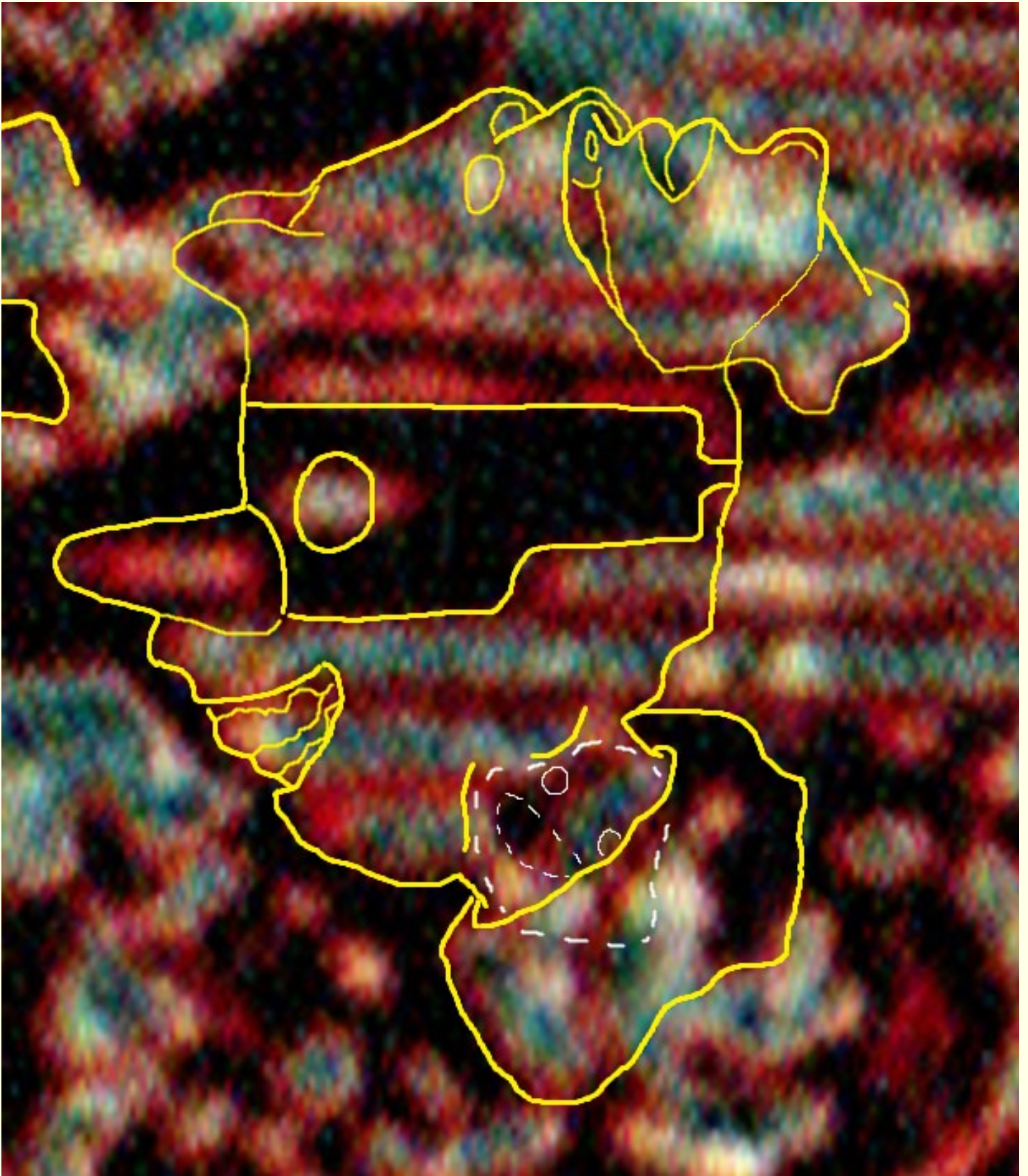


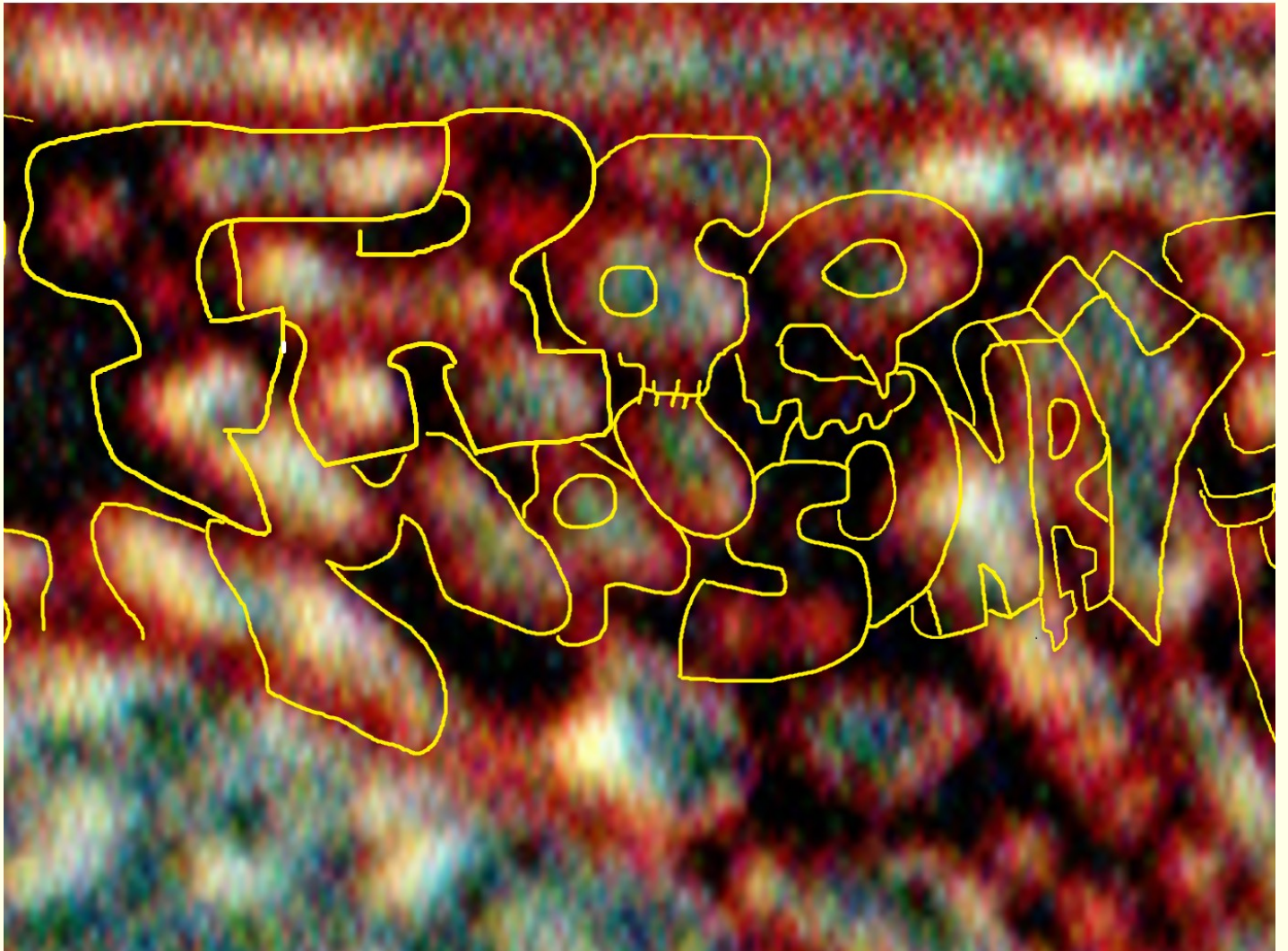
## A Few Final Images

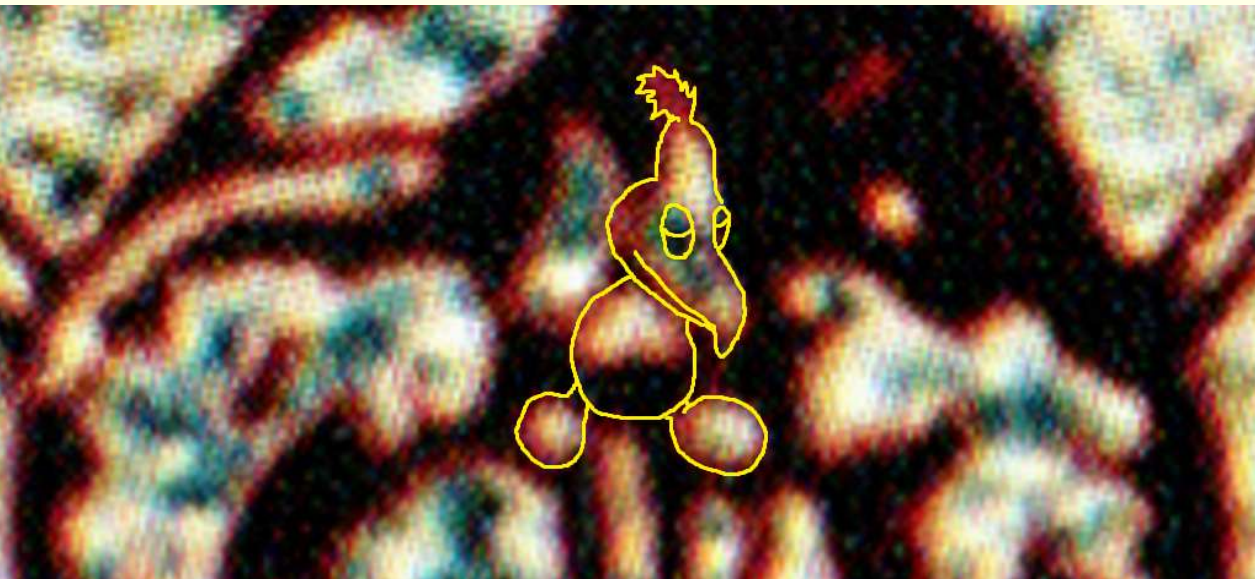
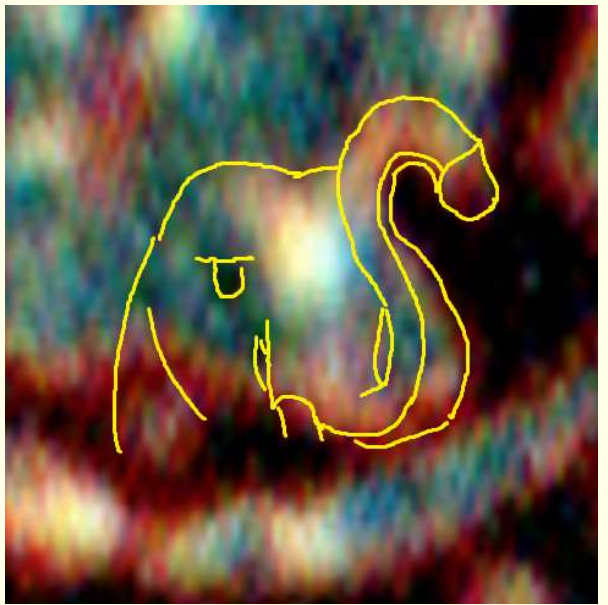
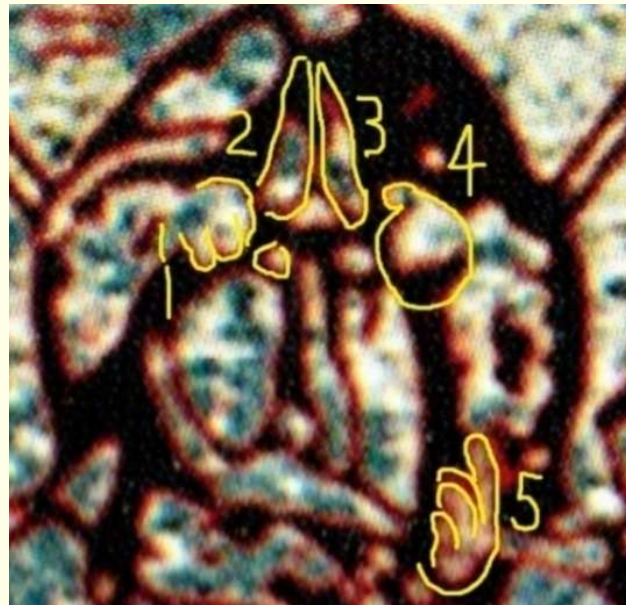
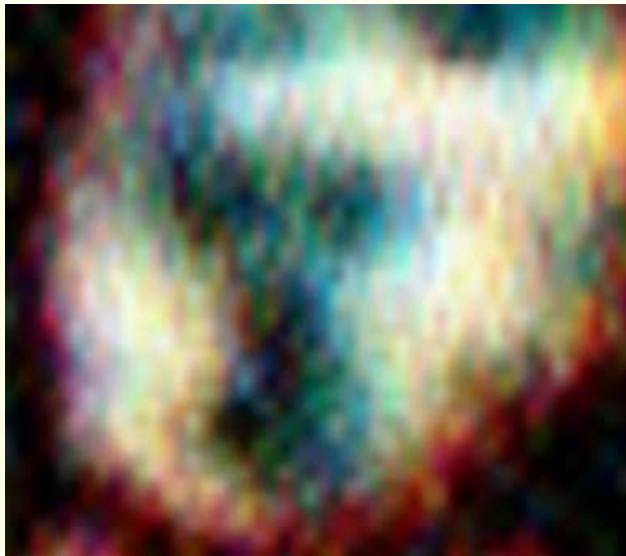


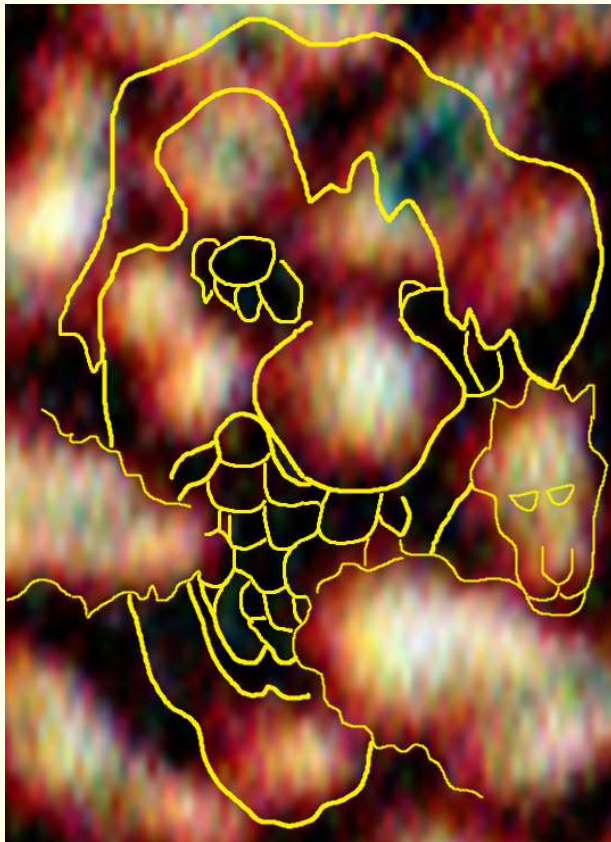
In *My Stepdad Was One of the Zodiac's Santa Rosa Hitchhiker Murderers*, I revealed that in the first month of 5<sup>th</sup> grade, I wrote a short story that was stolen and became the "Star Wars" franchise. The Star Wars-like image above was included in central field, beside the bulls, at the Elder's feet, to confirm that I conceived Star Wars.



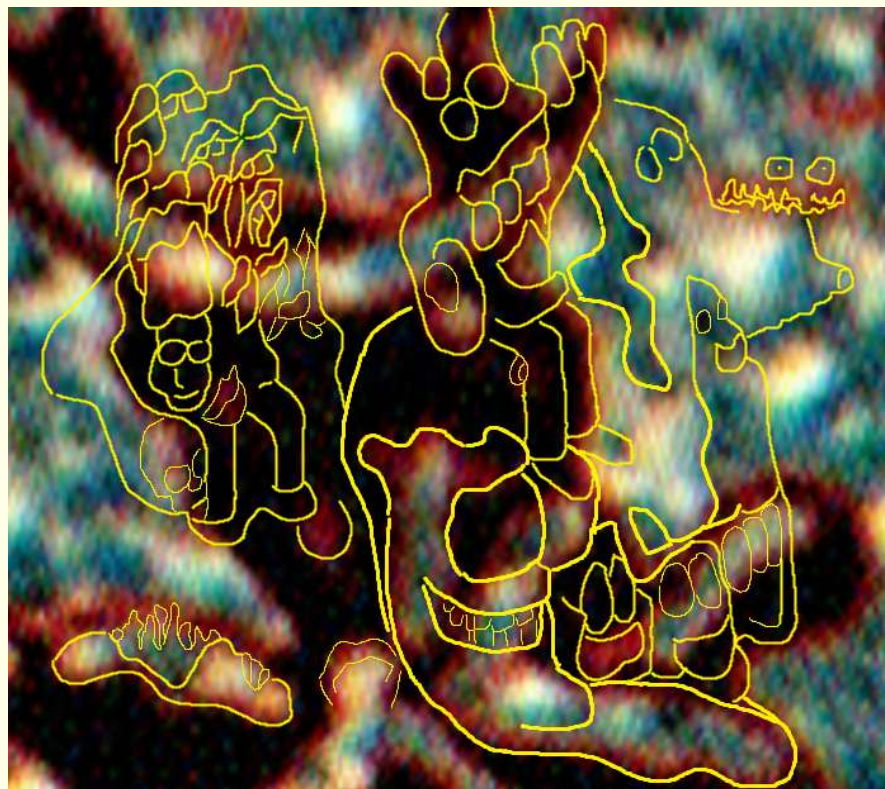








Learn much more about the Elder Badge in *Steve's Top-Secret Notebook* and *Killing Guadalupe*.





Above, life-size images and measurements of the Elder and Juan Diego badges (in inches).

To the right: my *life-size Nuestra Señora de Guadalupe* poster.

An Elder Badge enlargement is attached to the end of this PDF.

To see more Elder Badge images, and more mysteries revealed and solved, see *Steve's Top-Secret Notebook*, and L5THTRT.

First published on May 11<sup>th</sup>, 2025.

Updated on May 29<sup>th</sup>, 2026 (Julian); June 11<sup>th</sup>, 2026 (Gregorian); 4724, 4<sup>th</sup> Month 26 (Yin).

There are 1,500 words in this mini-book, including these.



