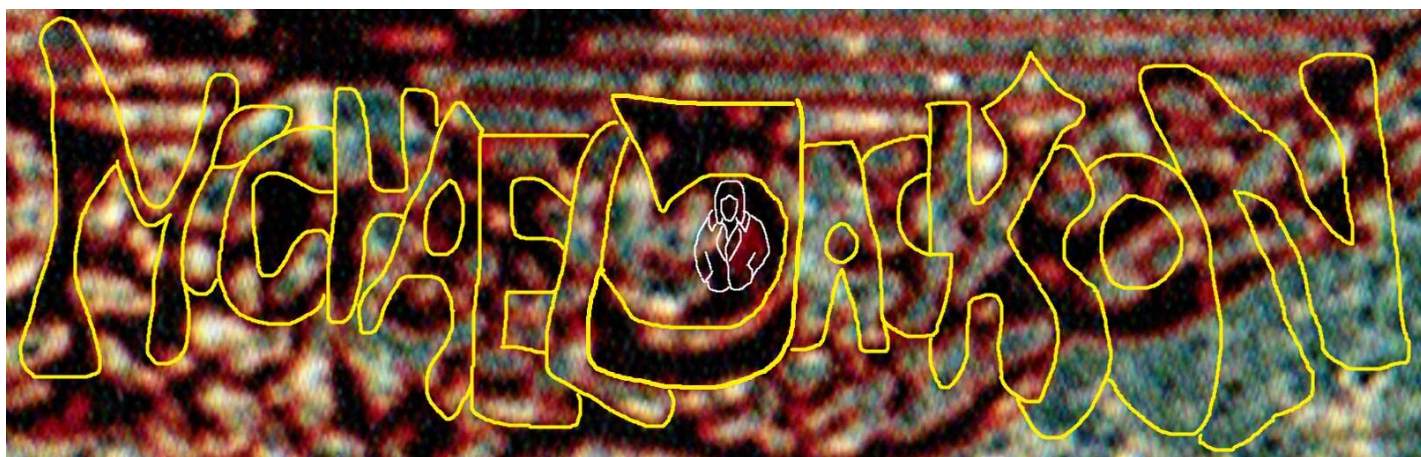


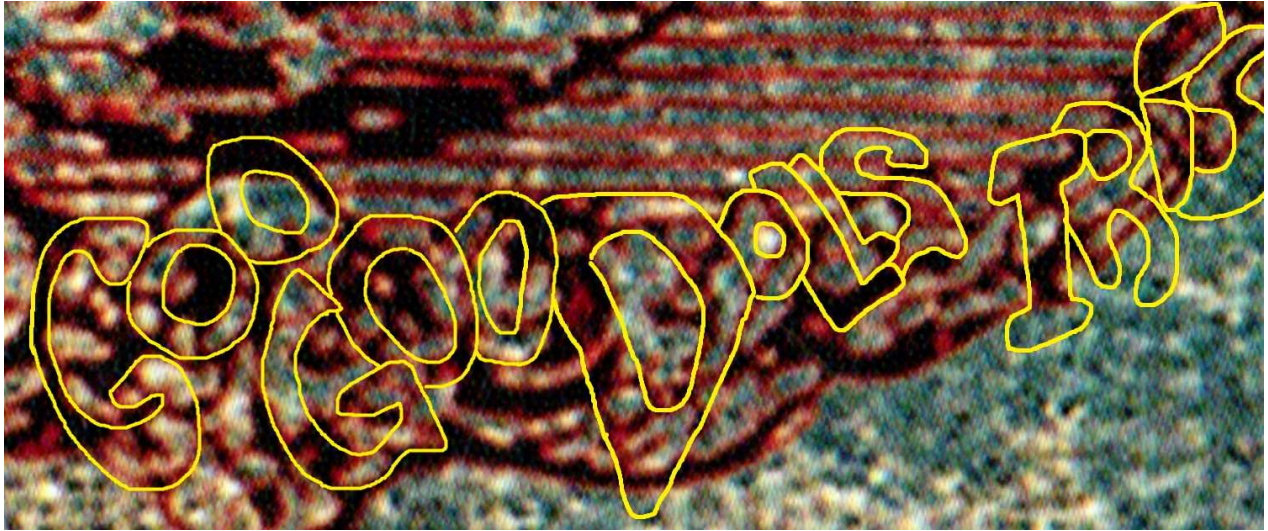
More I.P. Thieves



Michael Jackson's "Man in the Mirror" was based on one of my songs, called "Changed."



Idiocracy was based on *Uberopolis/Butterfly Driver*.



Goo Goo Dolls song "Iris" infringes my work. (I think they stole a couple songs.)



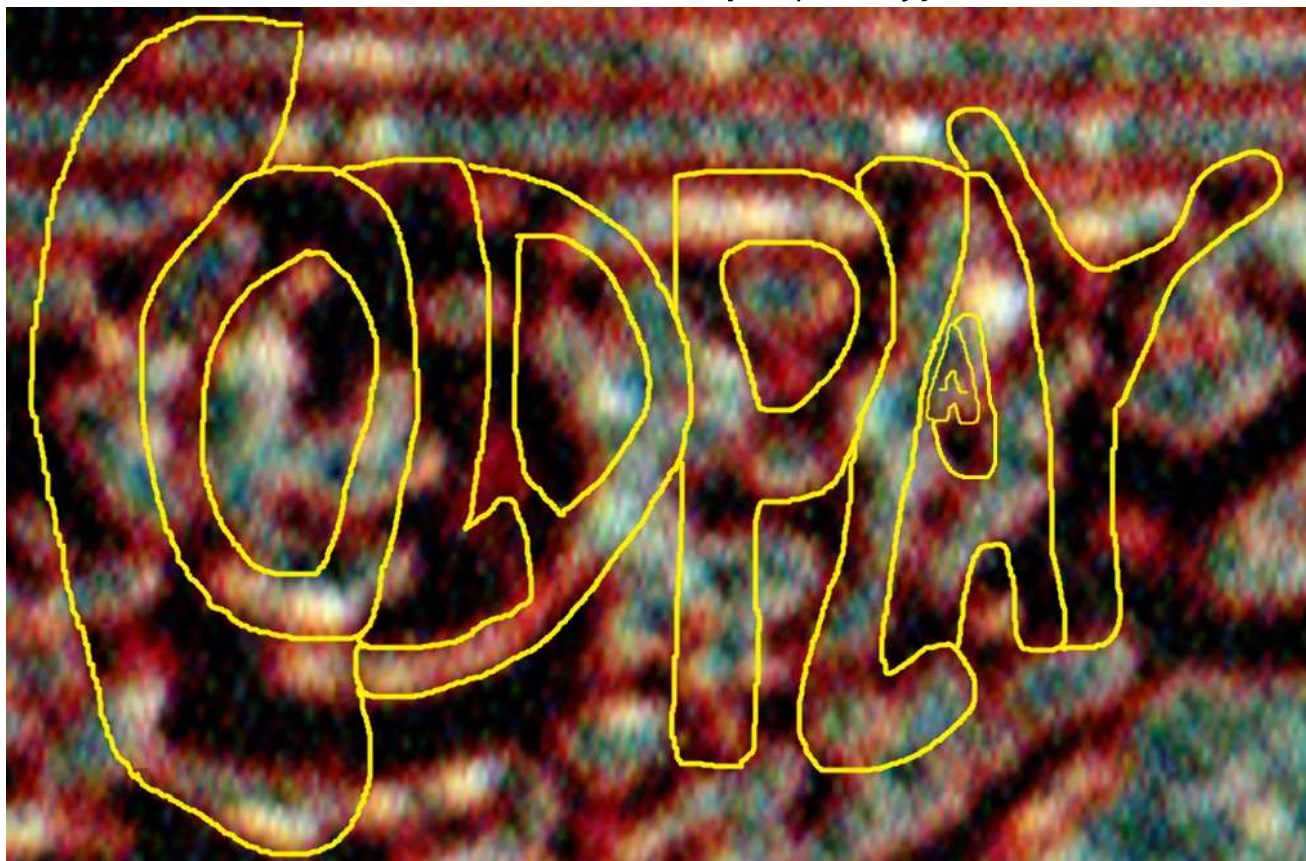
Eminem's song, *Love the Way You Lie*, infringes "Tell Me a Lie."



The Royal Tenenbaums was derived from *Hot Orange and Honey*.



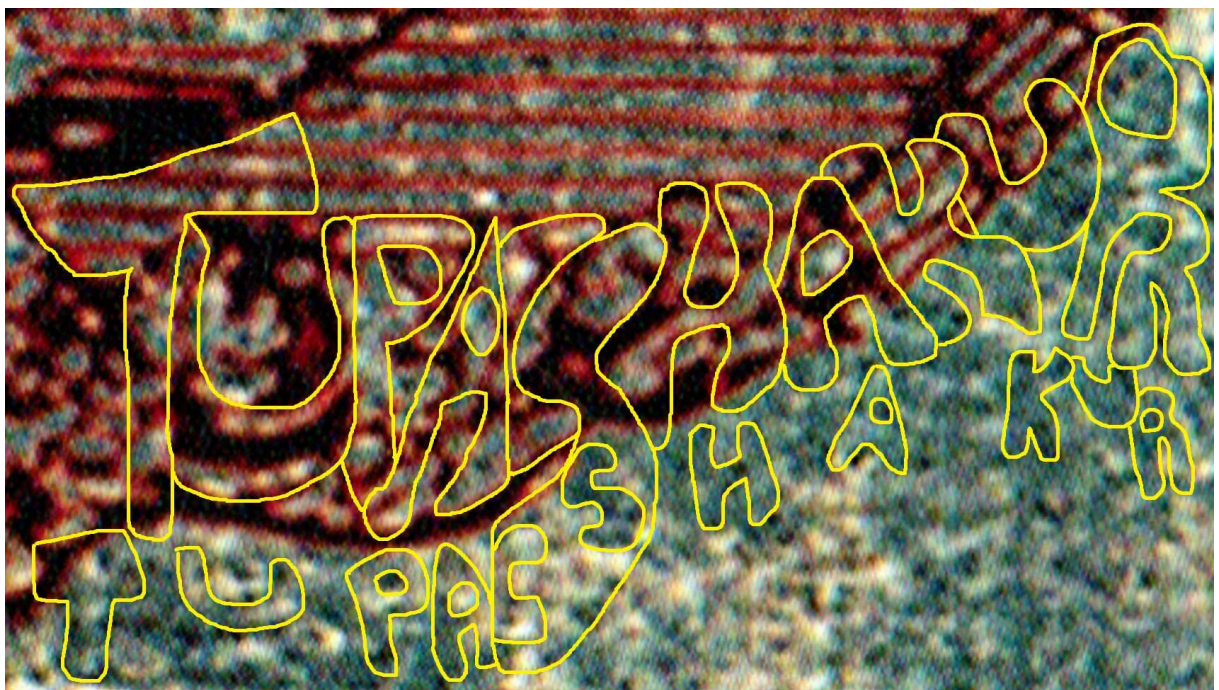
Wall-E was derived from *Uberopolis/Butterfly Driver*.



Cold Play stole When I Ruled the World (they probably stole others).



Tupac stole the concept and feel of *Changes* and some other stuff. God put Tupac's face above (top, right), for the doubters. The letters in the blue field tell us Tupac was a big homosexual. To confirm all this, God put a complete set of confirmation letters in the blue peripheral field (below).





Kanye West stole a few things.

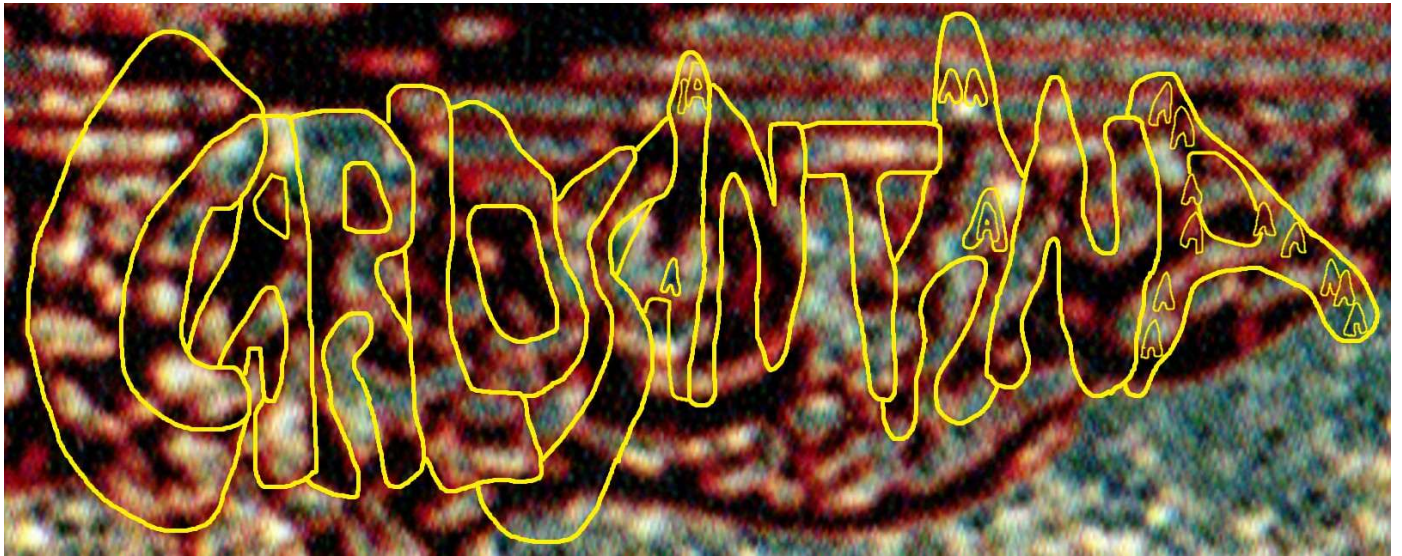


Pearl Jam's better songs were derived from my work.



Rob Thomas and Matchbox 20 stole a LOT.





Rob Thomas and Carlos Santana stole the concept and feel of *Smooth*.



The movie *Napoleon Dynamite* was derived from *Hot Orange and Honey*.

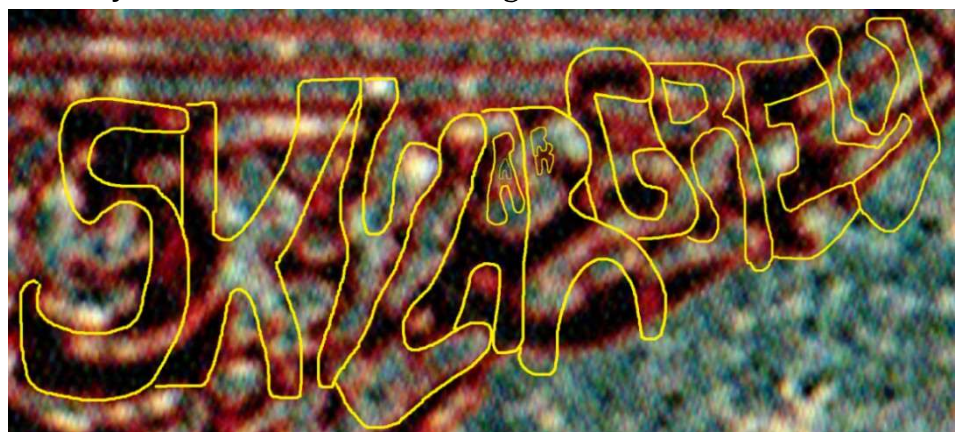


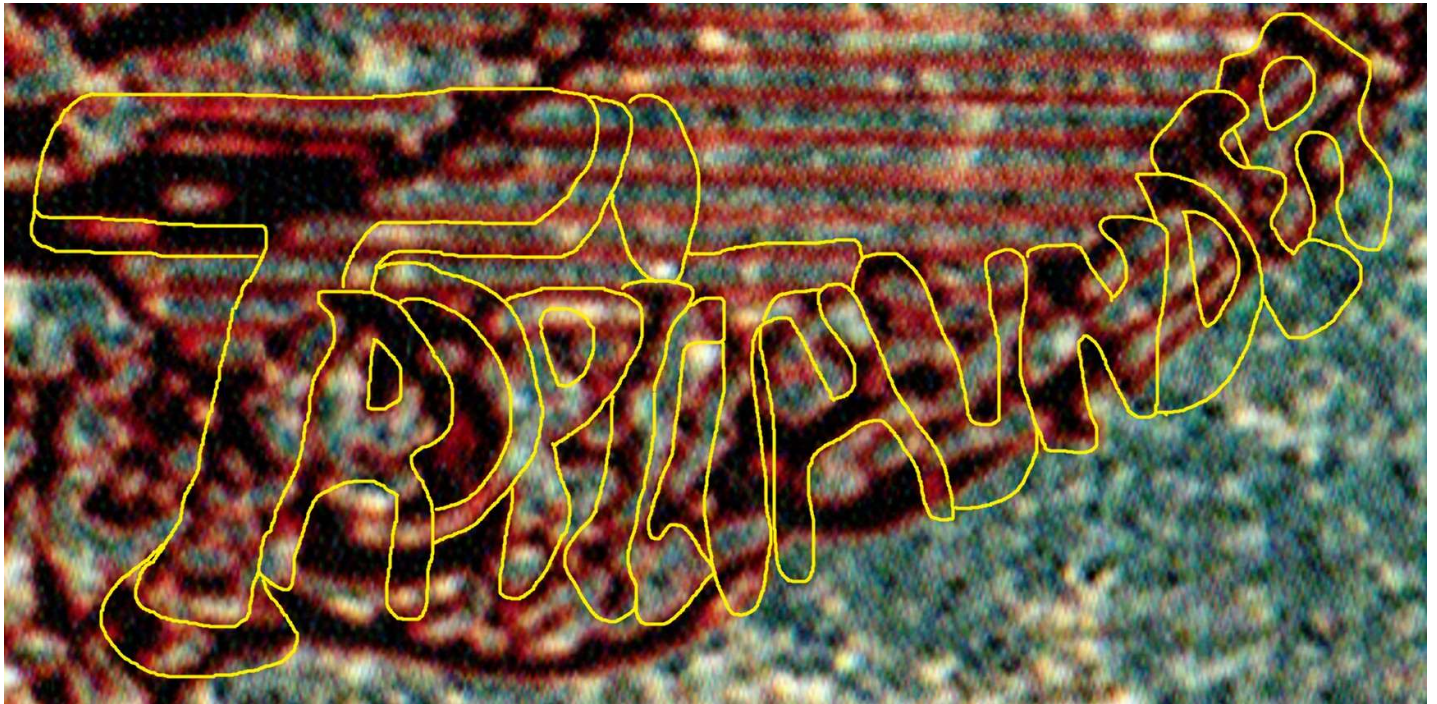
Finding Nemo is based on *Hermit the Hermit Crab* –a story I wrote when I was 8 years old.



Virtually anything John Mayer did that was interesting was derived from me.

Skylar Grey helped
Eminem steal Love
the Way You Lie.





The film Tropic Thunder is derived from Butterfly Driver/Uberopolis.
South Park (below) and The Simpsons stole a lot of my ideas, regularly.





La 5ª Estacion –both spellings. Lots of my stolen music went to Latin America.





Brave. And...



...Frozen.

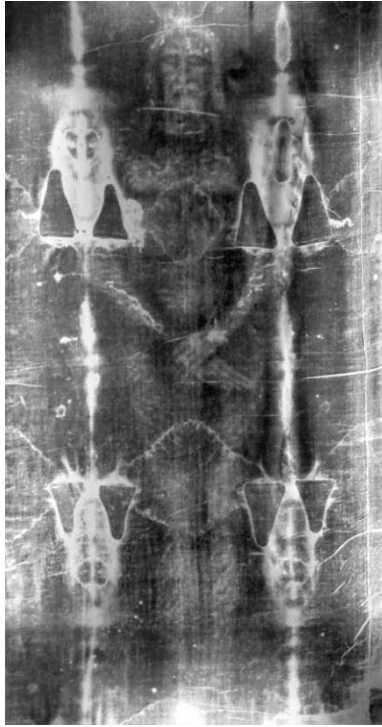
The Destruction Date

Final Edition



An Interpretation of God's Prophecy,
By Steven K Briggs (Yayayar)

URGENT: Date & Time of the One Hour War



The Shroud of Turin ¹



Nuestra Señora de Guadalupe ²

One Hour War Date:

January 7th, 2026 (Gregorian); **9a-10a** US West Coast; **12p-1pm** US East Coast.
[Alternately: 11 month, 19, 4723 (Yin Calendar); December 25th, 2025 (Julian Calendar).]

The *One Hour War* of Revelation, Chapter 18, is believed and expected by many, including this writer, to be the most disastrous Event in human history. The predicted date, above, represents my eleventh attempt (in 2 years) to predict the date and hour of God's One Hour War.

The Shroud of God, my eleventh and most recent publication related to the *Book of Revelation* and the One Hour War (OHW), indicates God predicted I would predict or solve the correct OHW date and time on my eleventh attempt.

For my first 10 predictions, I assumed the correct date and time were located in a single source. But, in fact, God hid the *hour/time* of the War in *Nuestra Señora de Guadalupe*, and hid the *date* in the Shroud of Turin.

In my two-year effort to predict the OHW date and time, I've had some important successes: I solved the rest of the Book of Revelation –and eventually

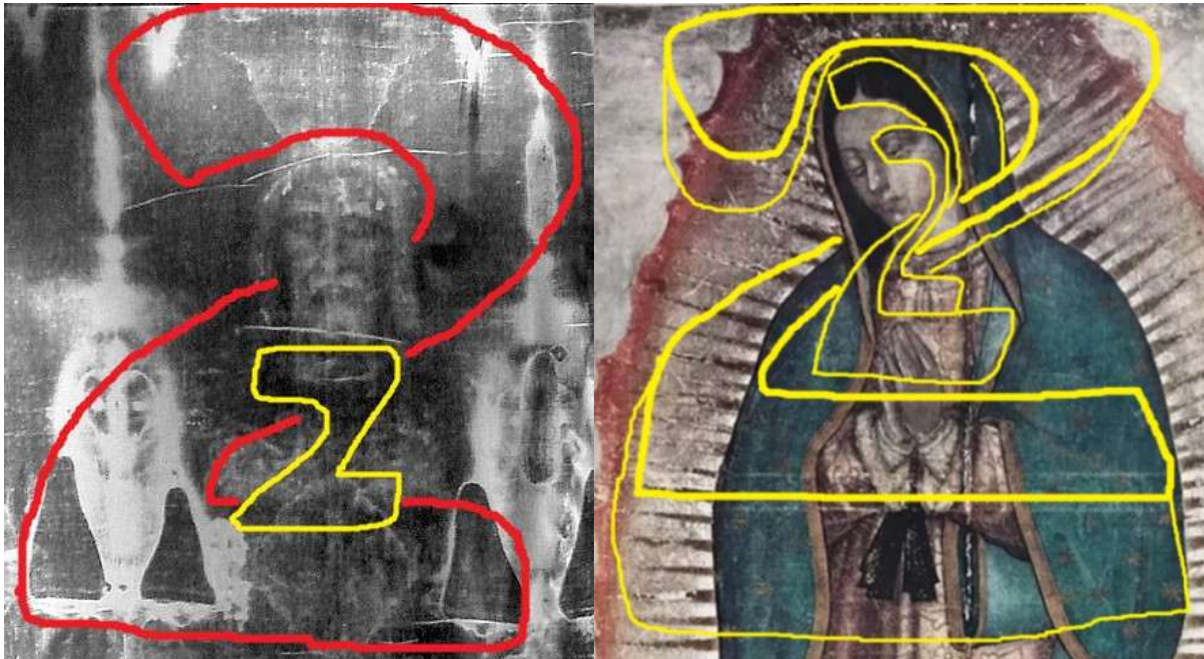
¹ A representation of God's Son, Jesus, in His human incarnation, created by God, and best seen in photo negatives.

² God's representation of: (1) Jesus' symbolic mother, Mary, (2) Natas (*Mother Nature*), God's daughter.

There are exactly 2000 words in this mini-book. Updated: **January 3rd, 2026**

learned the date and times revealed in Revelation were a *tactical deception* –the true *times* were hidden in Nuestra Señora. However, I thought the OHW *date* was also hidden in Nuestra Señora. It took about 8 months to discover the OHW date was hidden in the *Shroud of Turin*.

If you’ve read *Steve’s Top-Secret Notebook*, you might argue my solutions to God’s mysteries/revelations about His daughter, Natas, or about the true reason He sent Satan to Earth, and a few other solutions surpass the importance of the OHW date. That view has merit. But One Hour War mystery is different. If I predict the OHW, not only can I help save many people, but the OHW solution verifies my other solutions –if the OHW happens on the day and time I say God’s prophetic sources indicate, then all of my other Revelation solutions are assumed to be correct.



In the images above, I’ve outlined the shapes of *invisible 2’s*, hidden in the Shroud and Nuestra Señora –clues from God that He hid the OHW date and time in TWO separate source artworks.³

To persuade people to be out of large and mid-size Western cities at the time of the OHW, the following pages review some of the OHW date and time “*image messages*” found in (1) *Nuestra Señora*, (2) *the Shroud of Turin*, and in two small *badges* attached to Nuestra Señora: (3) *the Elder Badge*, and (4) *Juan Diego’s Badge*.

The *Juan Diego Badge*, attached to Nuestra’s lower left corner, carries the OHW **Publication date**.

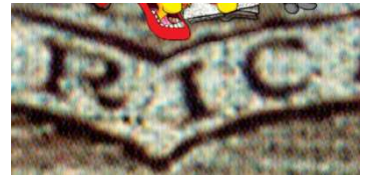
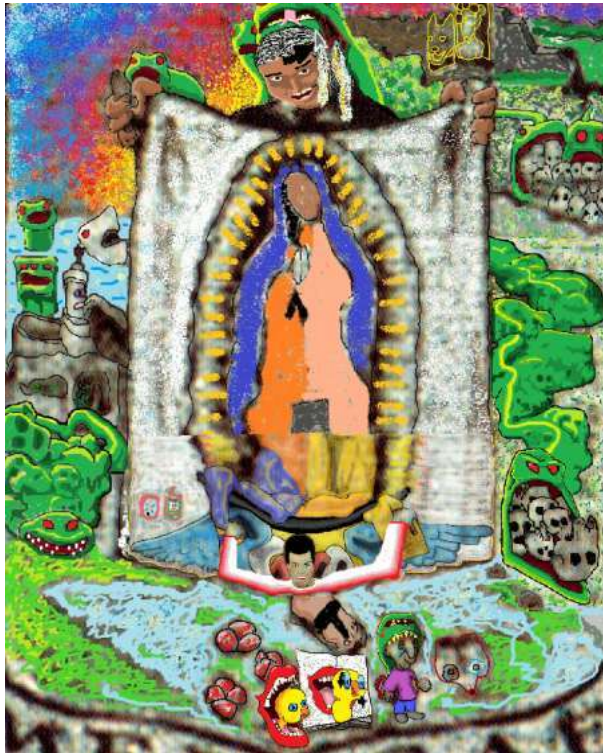
³ Nuestra Señora was repeatedly desecrated by Western elites and Church insiders, and stolen, in fragments. Nothing that is visible on Nuestra today is God’s work –which could never be replicated by a human. (Read *Killing Guadalupe* for more.)

The Publication Date

(This section is modified from *Killing Guadalupe*; first published spring 2025)

Below, the numbers 5 and 1 are a *Publication date* instruction –the date by which formal *discussion* of the OHW or the *Publication date* must have been published. A Publication date was first discovered in my Revelation solutions in March 2024. The Juan Diego Badge’s Publication date is on the *Yin* calendar, expressed in letters and positions associated with the numbers **5** and **1**, which refer to **5th Month, 1** (the first day of *Fifth Month*), **4723**, in the Eastern hemisphere; which corresponds to May 27th, 2025, in the East, and May 26th, 2025, in the West –as the West is roughly a day behind the East for half of each day. Here are the symbolic expressions of Publication date in Juan Diego’s Badge:

1. Right, the **I** (Roman numeral 1) in **AMERICA**, at the base of the central image frame, is askew; rather than pointing down to the 6 o’clock position, it points to 5 o’clock –which represents **5th Month**.



2. Above, the letters **A** and **E** at the end of the word **AMERICA**, in the base, are slightly bold and offset. **A** (the 1st letter in the English alphabet) represents the 1st day of the month. **E** (the 5th letter in the English alphabet) represents **5th Month** (Yin).



3. Juan Diego Cuauhtlatotzin only shows one foot, and the five toes of his foot are in the 5 o’clock position, pointing at the **A**. Juan Diego’s single foot represents the first day of the month, as does the letter **A**. Juan Diego’s five toes pointing at 5 o’clock emphasize **5th Month** (Yin).
4. Above, the character in purple faces 5 o’clock (**5th Month**), and toward the letter **A** –the 1st of the month.
5. The nose of the raccoon image, and the forward arrow on its head, point to the **A** –the 1st of the month.



6. At the top of Juan Diego's badge, the face and eyes of the *Image Beast* face slightly off center, to the 5 o'clock position: *5th Month*, Yin.



7. At the bottom of the badge, the square-jawed beast's head faces the 5 o'clock position (*5th Month*, Yin), and his head seems to tilt forward to 1 o'clock (the 1st of the month).

4. At the base of the tilma (right), the *original angel* faces 5 o'clock (*5th Month*), with his head tilted forward, to about 1 o'clock –the 1st of the month.



Above, the Publication year is expressed symbolically, at the bottom of Juan Diego's Badge. Reading left to right, three 'M' ghosts, outlined in red, left, represent the 3rd millennium, which we are now in; the two wolves in the middle, birds in mouth, represent the first 20 years of the new millennium; thus, each wolf represents a decade. The five common ghosts, outlined in pink, right, represent the first 5 years of the third decade of this millennium. Together, these characters express **2025**.

The Hour of the One Hour War

Nuestra Señora carries THREE central OHW details: (1) Nuestra identifies **the true hour** of the OHW; (2) Nuestra reveals Revelation's OHW date is/was a tactical deception –a false strike date; (3) Nuestra Identifies the primary Western calendar.

Nuestra, today, is badly damaged and mostly fake, but most 17th and 18th century copies (like the two rightmost images, used here for verification) get the details right: 22 stars on the left of



Nuestra, today



Villalpando, ca 1700



Arellano, circa 1691

Guadalupe's mantle, 24 on the right; representing Yin year 4722, and Julian/Gregorian year 2024. These years relate to the tactical deception date. The light blue interior of Guadalupe's mantle, turned out, symbolize the true One Hour War date is *different*.

Hour of Event (East): The OHW begins when the East begins launching their bombs. Nuestra Señora reveals that time is **11pm**. 11 is expressed in **FOUR** ways: (1) by Guadalupe's head at 11 o'clock; (2) the two pinkies of her hands are together, but separated from her other fingers, representing 11; (3) her hands point up to the 11 o'clock position; (4) her collar forms an 11 (and points down to her hands, at 11pm, and to her pinkies –forming an 11).

- "PM" is expressed by the fact Guadalupe's body is turned slightly, toward the dark (PM) side of her gown.

The *launch hour* will end at 12am, midnight; reinforced by black lace arrows under Guadalupe's hands, like clock hands, pointing up to midnight.

Hour of Event (West): The East's bombs will impact the US (and likely other parts of the West) from about 9am to 10am, PST (US West Coast time), or 12pm to 1pm, PST (US East Coast time). Guadalupe's 10 fingers, closed in prayer, may represent 10am, US West Coast time, when the OHW closes.



EVENT DATE: *Color-Contrast Confirmation*

The Mystery of the 2-Tone Gown: Solved

The tactical deception (TD) was scheduled for September 23rd (2024) in the West, but September 24th in the East. Similarly, the TD publication date and the true Event Publication dates were on one date in the East and another in the West. But the date of the actual OHW departs from that pattern, as the Event initiates when the East and West are in the same date.

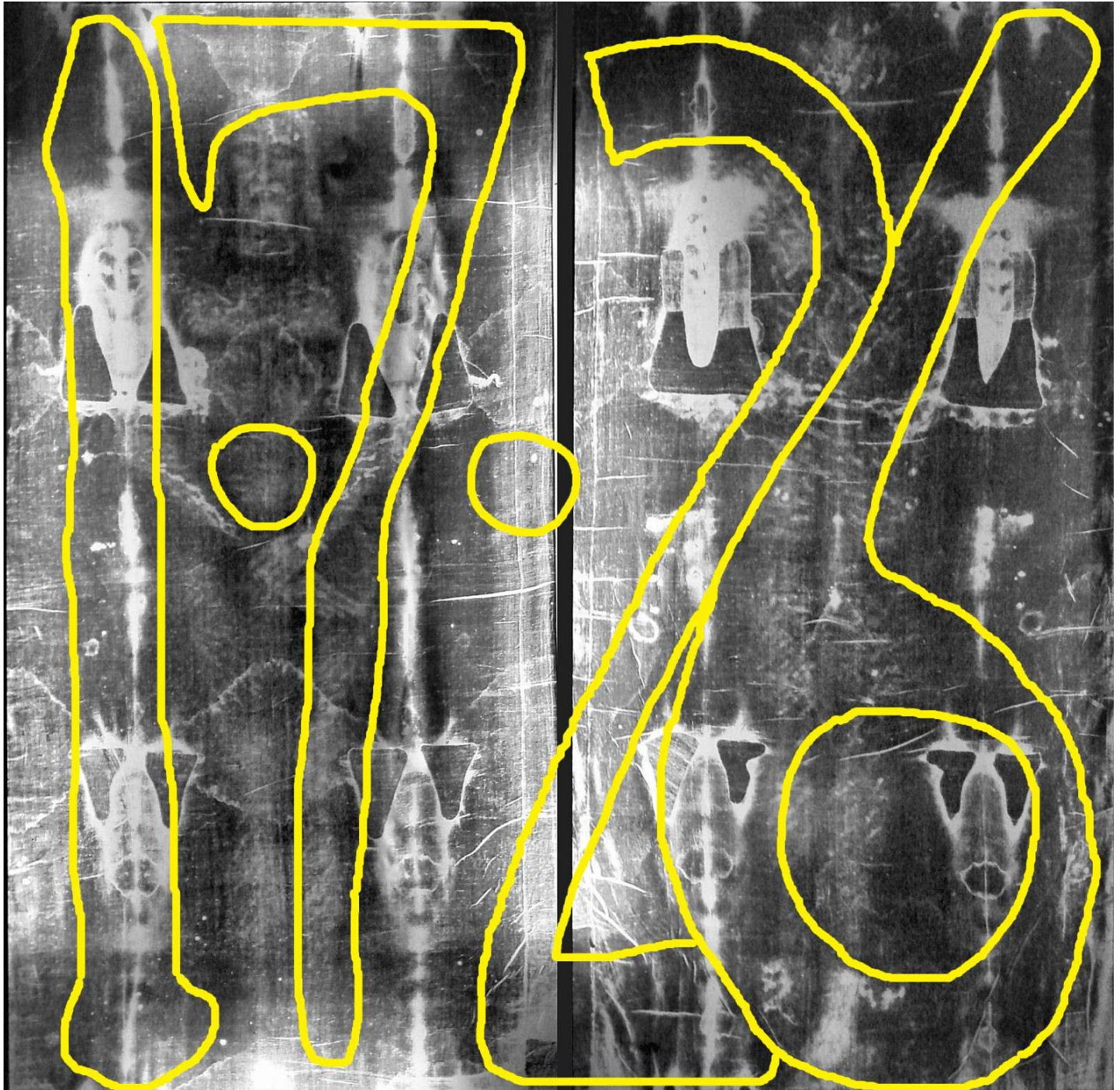
To confirm this, in Nuestra Señora's central image (see previous page), Guadalupe wears a conspicuously 2-tone gown, with dark tone on the viewer's left, and light tone on the right, representing the night and daylight periods of the same 24-hour day -to reflect that it will be night (dark tone) in the East, but day (light tone) in the West, when the OHW begins.

The JULIAN Calendar is the Prevailing Western Calendar

In the shade and contour of Guadalupe's gown, God reveals the primary Western calendar system utilized by Guadalupe -and the Shroud of Turin- is the Julian calendar (although both sources also use the Gregorian). To confirm this, God spells "Julian" at least six times in Nuestra's shade and contours (right).



Dates in the Shroud of Turin



God used the surface of Shroud to express the OHW dates, on the Gregorian, Julian and Yin calendars. Above: the OHW date on the Gregorian (January 1st, 2026);...

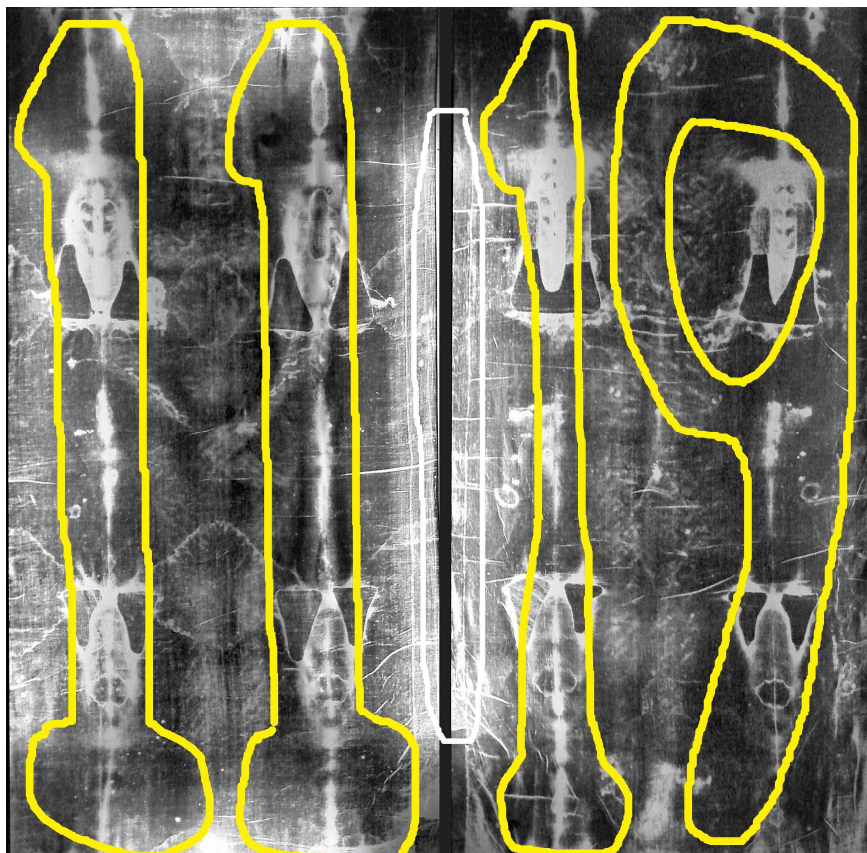
The Destruction Date



...and the OHW date on the Julian calendar (December 25th, 2025)...

The Destruction Date

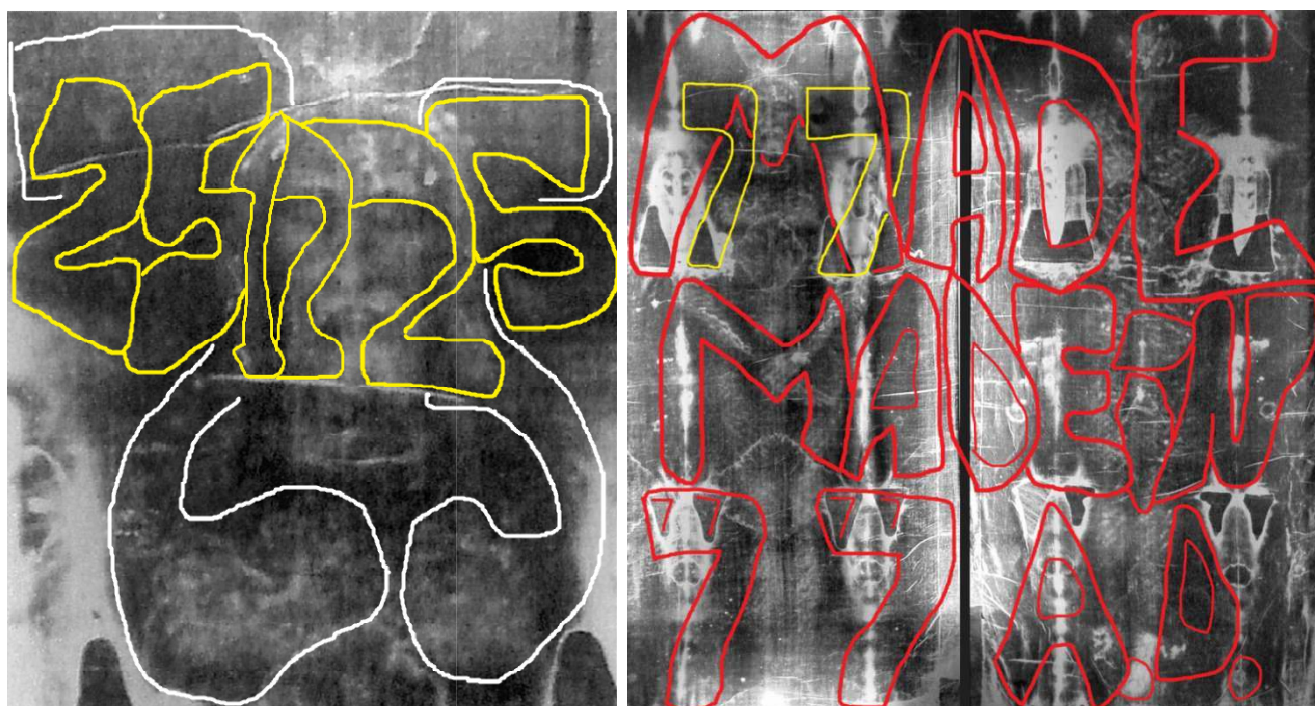
... and, to the right, the
full Yin date: 11 Month,
19, 4723;...



...and, to the left, the Yin
date without the year.



Above, on the left, God also used the Shroud surface for smaller expressions of the OHW date, on the the Yin (11/19/4723), Julian (12/25/25), and Gregorian (1/7/26). Above, to the right, and below, to the left, God also put OHW dates around Jesus' face. And God reveals the year he created the Shroud (below, right). [These images are presented much larger and clearer in *The Shroud of God*.]

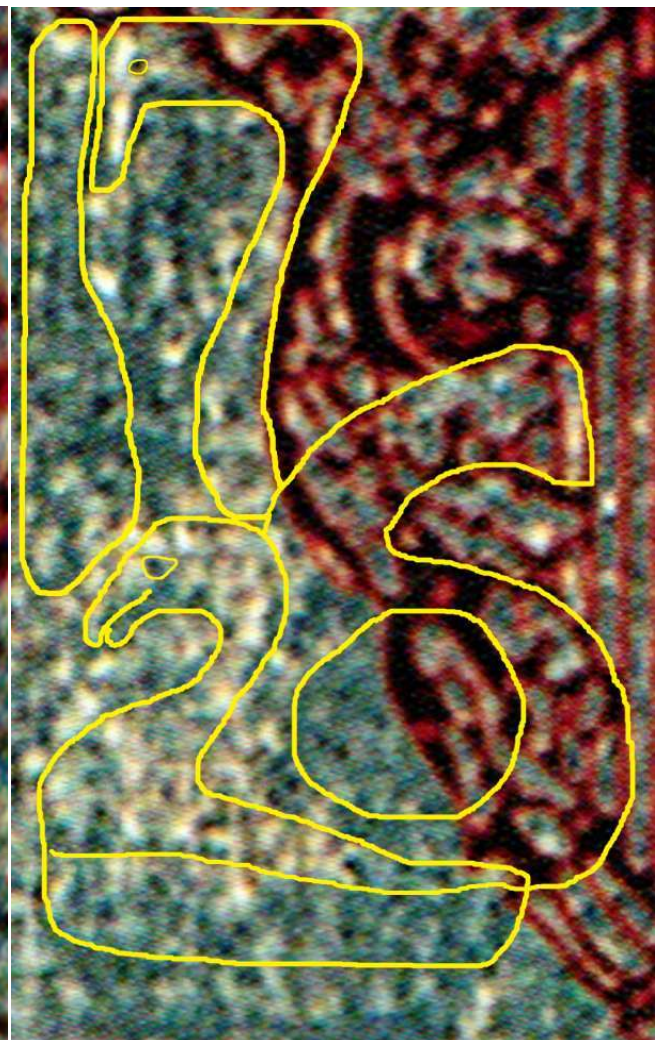
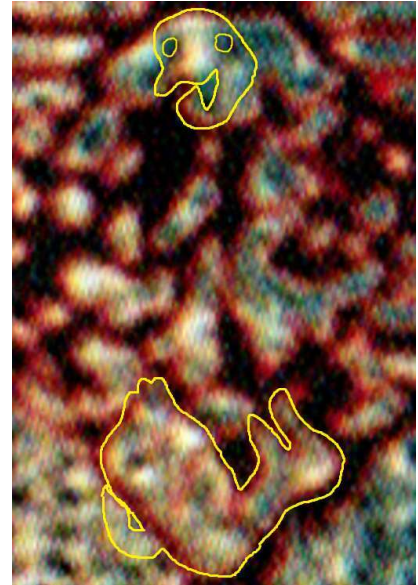


Elder Badge Dates

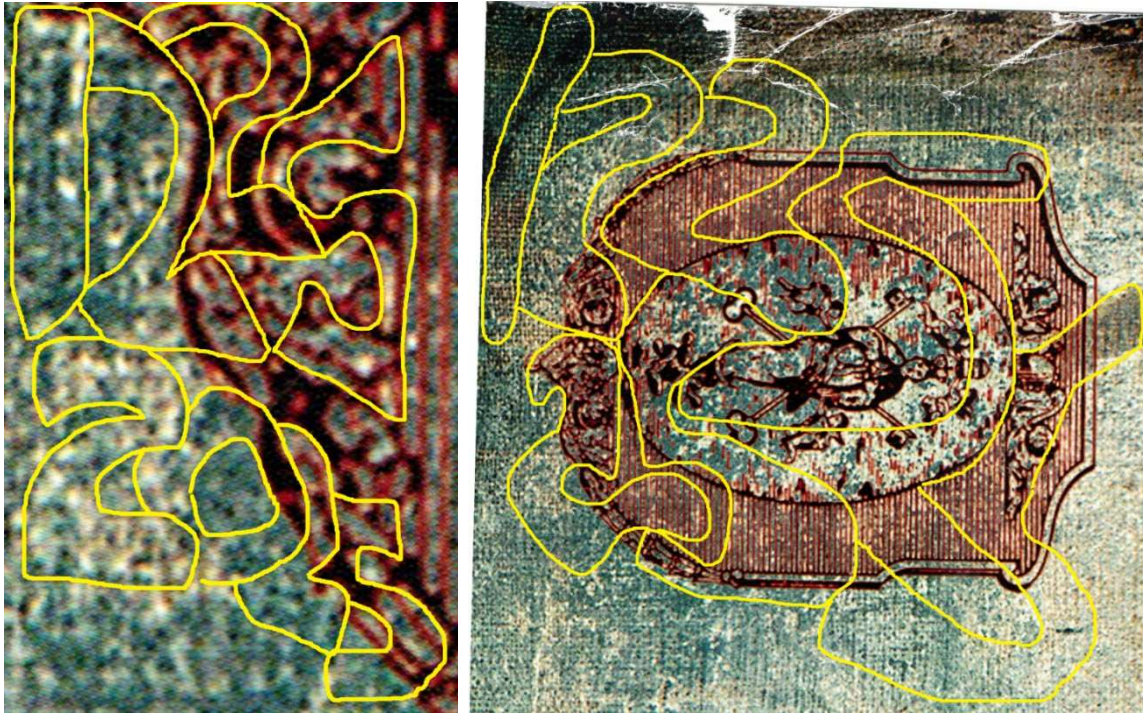
Gregorian OHW Date

To fully appreciate some of the Elder Badge's OHW date expressions, you should know there are at least two images of ducks in the Elder Badge base *central display area*. The most visible ducks are pictured to the right.

Below, to the left, God expressed the Gregorian OHW date by using parts of the *most visible* ducks, and revealing a new duck -in the 2 of the OHW date: 1/7/26. Below, to the right, a much larger expression of the Gregorian date, on the southwestern corner of the Elder Badge -and to confirm His work, God attached two duck heads to the date; one on the crest of the seven, one on the arch of the two.

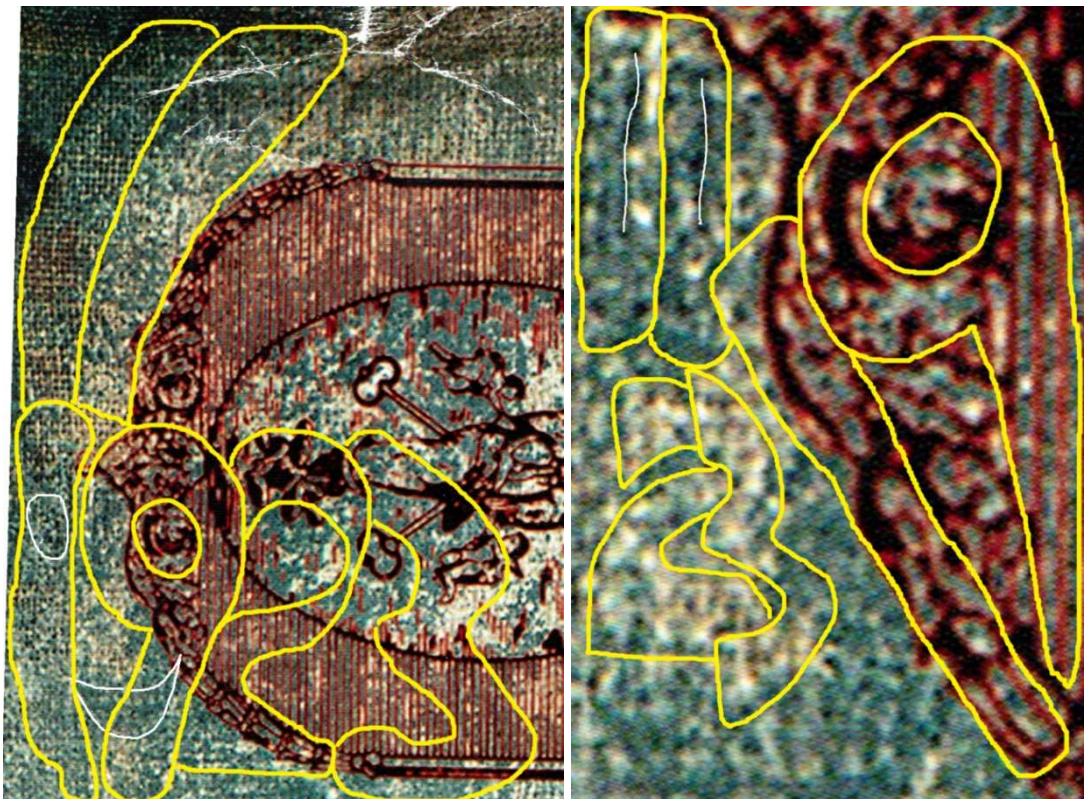


The Destruction Date



Above, God expressed the complete Julian date (12/25/25) in the southwest “street scene” corner (left), and over the entire Elder Badge (right).

Below, God expressed the Yin date 11/19/4723 over the *street scene* (right), and the entire base (left) –with a smiling face!



The Destruction Date

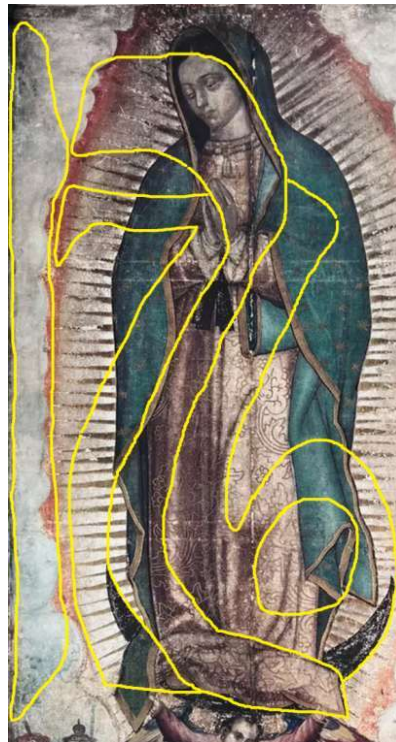


Street Scene Date. In the *street scene* , above, God included the Gregorian date.

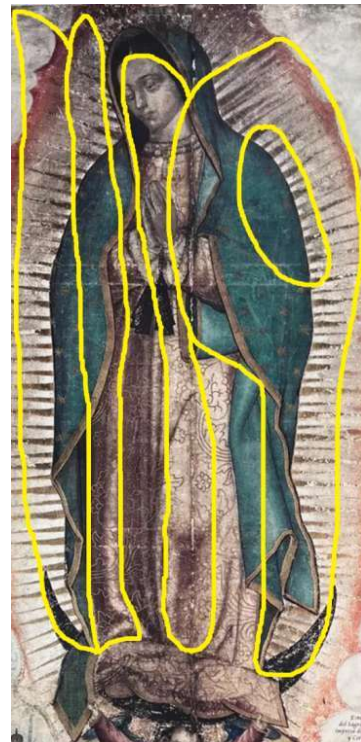
Nustra Señora. Below, God also confirmed the OHW date in Nustra Señora –in such a way that I could only find them if I *knew* the OHW dates.



12/25 (Julian)



1/7/26 (Gregorian)

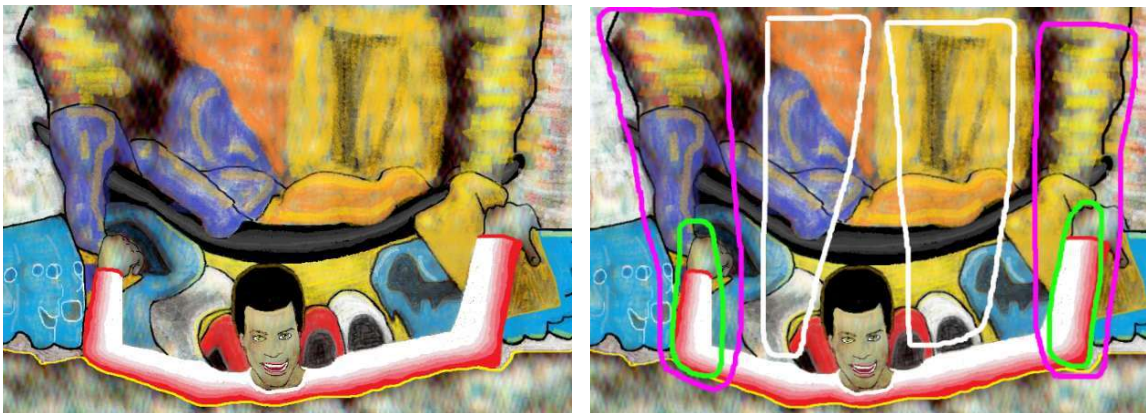


11/19 (Yin)



Above, God used Juan Diego's Badge's central image (which I added color to in the images above) to reveal I would correctly solve the OHW date and time on my 11th prediction-solution. In the image above, right, 11's are everywhere.

Below, in the base of Juan Diego's tilma, the original angel's forearms, and other structures around him, indicate he (I) will get the OHW date right on his (my) eleventh prediction-solution.



Complete ONE HOUR WAR Date (GREGORIAN): January 7th, 2026
TIME: 9am to 10am, US West Coast Time; 12p to 1pm, US East Coast Time.

See the "Notes" of *Steve's Top-Secret Notebook* to learn why God emphasized 11.